

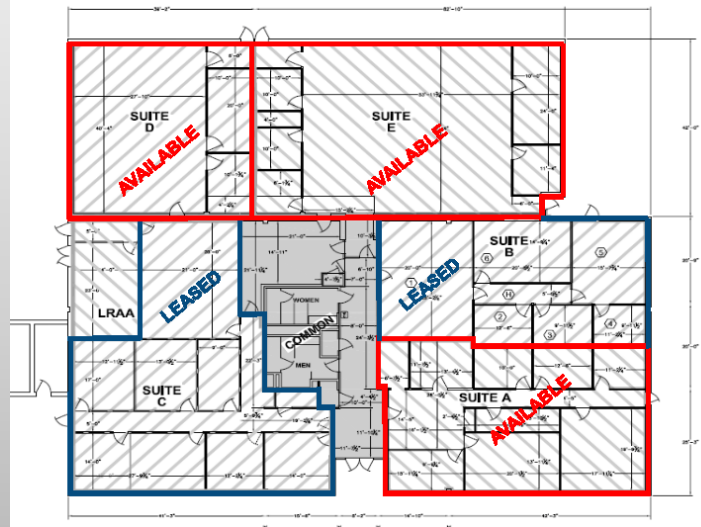
Bowman Business Center

Bowman Field – 2700 Moran Street



Features

- Suite A – 1,890 sq.ft.
- Suite D – 1,536 sq. ft.
- Suite E – 2,544 sq. ft.
- Flexible Lease Term
- Private/Low Traffic Setting
- Raised Flooring for Cable Runs
- High Speed Internet Available
- Easy access to I-264 & I-64



Darrell Watson, A.A.E.

Director of Properties

502-363-8509

darrell.watson@flylouisville.com

Adam Thomas

Properties Manager

502-363-8508

adam.thomas@flylouisville.com