

**Community Noise Forum  
Monday January 28, 2013  
Agenda**

- I. Call to order: 6:00PM
  
- II. Minutes of November 26, 2012.
  
- III. Part 150 NCP
  - A. Update: Noise Insulation Program
  - B. Contraflow exceptions
  
- IV. Current Noise Concerns
  - A. Noise concerns/complaints
  - B. Runway utilization
  - C. Construction and maintenance activity
  
- V. Announcements
  
- VI. Guest Comments
  
- IX.. Next Meeting: Monday, March 25, 2013
  
- X. Adjournment:

COMMUNITY NOISE FORUM (CNF)  
**Monday, November 26, 2012**

**Members**

John Sistarenik, ANA  
Pat Gould, Northeast  
Greg Petto, FAA  
Bob Slattery, LRAA  
Larry Owsley, UofL  
Pete Levermore, Airline Affairs

Mary Rose Evans, LRAA Board  
Kevin Kays, Southwest  
Denny Thompson, Southeast  
Verna Goatley, Metro  
Mike Zanone, Northwest  
John Greathouse, Southwest (alt)

**Guests**

Nydia Regnier, Fetter Ave.  
Shane Smith, Eastern Pkwy.  
Dorn Crawford, Audubon Pkwy.

Tony Deddens, Wirth Ave.  
Victoria Kays, Bridget Dr.  
Wendy Harrower, C&S

The meeting was called to order at 6:00 p.m. by John Sistarenik. The September minutes were approved as corrected – Exceptions to Contraflow sentence 2 should read, "...to be an..." The beginning of second sentence under WebScene Issues, should read, "**The list of...**"

John introduced Pat Gould who is now the representative of the Northeast quadrant.

**Part 150 NCP:**

**A. Updates:**

**Noise Insulation Program** – On October 4, 2012, the FAA approved our transition plan for the sound insulation program. The transition plan allows us to continue with the program as specified in the Part 150 Record of Approval (ROA). Any noise insulation project that is started during the transition period must be completed prior to September 30, 2015.

- Phase 3 (121 potentially eligible units and is broken into sub-phase 3A/B) – The final Part 106 consultation meeting for Phase 3B (Audubon Park) was held in September, currently there are still two primary issues that need to be resolved. The first issue is concerning the boundary for Audubon Park Historic district. The FAA has forwarded their results of the consultation meetings to the Advisory Council on Historic Preservation (ACHP) and we are currently awaiting a determination from the Keeper of the Records. The second issue is the LRAA requirement for an avigation easement. The FAA will make the determination on the avigation easement.
- 3A includes all homes **not** in Audubon Park. Currently, the designs are complete for 3A. We are poised to award a contract for those homes at the January 2013 board meeting pending a decision from the record keeper. The

14 additional families added after the FAA Program Guidance Letter was released are not included in this contract. Designs for these additional families is scheduled for February 2013.

- B. Contraflow Exceptions:** Contraflow for September 2012 was 55% for arrivals from the south and 92% for departures to the south. In October 2012, arrivals from the south were 62% and departures to the south were 78%. For CY 2012 the arrivals average 65 % and departures are at 85% as of October 31, 2012. A daily summary for September and October 2012 is contained in the handout. A monthly summary going back 8 years is also included in the handout.

### **Current Noise Concerns:**

- A. Report on Noise Concerns/Complaints:** We received a total of 31 comments in September 2012. 12 comments were comments received at the QHP project office and 19 were received by the LRAA.

In October we received a total of 34 comments. 3 were received at the QHP project office and 31 were received by the LRAA.

- B. Runway Utilization:** Runway utilization percentages for September and October are contained in the handout. Daily runway utilization and comments from the Air Traffic Control Tower September and October are also included in the handout.

- C. Construction and Maintenance Activity:** Bob reported that only scheduled maintenance is going on at this time.

**Noise Insulation Sources for Non-Eligible Home Owners (residents outside the DNL 65 contour):** Wendy Harrower, Project Manager, Quieter Homes Program: Wendy passed out copies of the Non-Eligible Home Owner brochure. The Airport Neighbors Alliance (ANA) has worked with the LRAA and C&S Engineers to include additional information on manufacturers of acoustical doors and windows in the brochure.

**Announcements:** Mary Rose said she has recently spoken with Representative Jim Wayne regarding the Bill for Sound Insulation tax credits. He said he is willing to sponsor this again, but it would be beneficial to have it co-sponsored by a Senator, preferably a Republican, so it will go somewhere in both the Senate and the House. Representative Wayne is also interested in sponsoring the legislation for the Noise Overlay District that we got through the house last year but could not get it assigned to a committee. ANA is working to have this legislation co-sponsored by a republican Senator as well. He will try to get both of these pieces of legislation passed this year.

**Guest Comments:** Nydia Regnier wants to know if the averages of arrivals and departures over her home goes up in future years, how is that taken into account for the DNL 65. Bob Slattery responded that the first step would be documenting a significant change in noise exposure has occurred. The FAA considers a significant change an

increase in noise of DNL 1.5 dB or more at or above DNL 65 dB noise exposure. The first step in determining if a change has occurred is to review the runway use charts that are included in the handout. Bob will include a list of the top ten aircraft types in the handouts for the next meeting.

**Next Meeting:** Monday, January 28, 2013 at 6 p.m.

**Adjournment:** 6:39 p.m.

# Daily Runway Use Summary- November 2012

(from 10:00 PM date list in first column to 7:00 AM the following morning)

		% of all arrivals from the south									% of all departures to the south									
Date	Day	* in compliance	Runway #						Unknown Runway Use	Notes / Comments	** in compliance	Runway #						Unknown Runway Use	Notes / Comments	
			11	17L	17R	29	35L	35R				11	17L	17R	29	35L	35R			
11/01/12	Thu	95%		4	1			58	37	0			38	51			8	3	0	
11/02/12	Fri	94%		4	2			61	33	0			41	56				3	0	
11/03/12	Sat																			
11/04/12	Sun																			
11/05/12	Mon	98%		2				53	45	0			41	55			2	2	0	
11/06/12	Tue	97%		2	1			57	40	0			41	46			6	7	0	
11/07/12	Wed	94%		6				55	39	0			41	50			8	1	0	
11/08/12	Thu	95%		5				55	40	0			43	50			3	4	0	
11/09/12	Fri	9%		37	54			3	6	0	130-140@5-7knts		39	60			1		0	
11/10/12	Sat																			
11/11/12	Sun																			
11/12/12	Mon	94%		6				55	39	0			35	57			7	1	0	
11/13/12	Tue	94%		4	2			51	43	0			36	61			2	1	0	
11/14/12	Wed	97%		2	1			55	42	0			36	56			5	3	0	
11/15/12	Thu	97%		1	2			50	47	0			41	55			2	2	0	
11/16/12	Fri	97%		1	2			57	40	0			35	61				4	0	
11/17/12	Sat																			
11/18/12	Sun																			
11/19/12	Mon	97%		2	1			60	37	0			37	50			8	5	0	
11/20/12	Tue	99%		1				57	42	0							63	37	0	340-360@3-6knts
11/21/12	Wed	100%						56	44	0			23	69			3	5	0	
11/22/12	Thu	0%		21	75		4			0	180-210@6-10knts		38	58			1	3	0	
11/23/12	Fri	100%						68	32	0							56	44	0	290-310@5-10knts
11/24/12	Sat																			
11/25/12	Sun																			
11/26/12	Mon	100%						50	50	0							55	45	0	350-010@7-12knts,RA
11/27/12	Tue	95%		5				55	40	0			36	56			5	3	0	
11/28/12	Wed	98%		2				56	42	0			41	52			4	3	0	
11/29/12	Thu	95%		3	2			52	43	0			42	56			1	1	0	
11/30/12	Fri	5%		43	52			2	3	0	110-140@3-5knts		39	60				1	0	

Preferred Flow

DATIS Reported Conditions Indicate Support for Non-Preferred Flow

DATIS Reported Conditions Do Not Indicate Support for Non-Preferred Flow

# Daily Runway Use Summary- December 2012

(from 10:00 PM date list in first column to 7:00 AM the following morning)

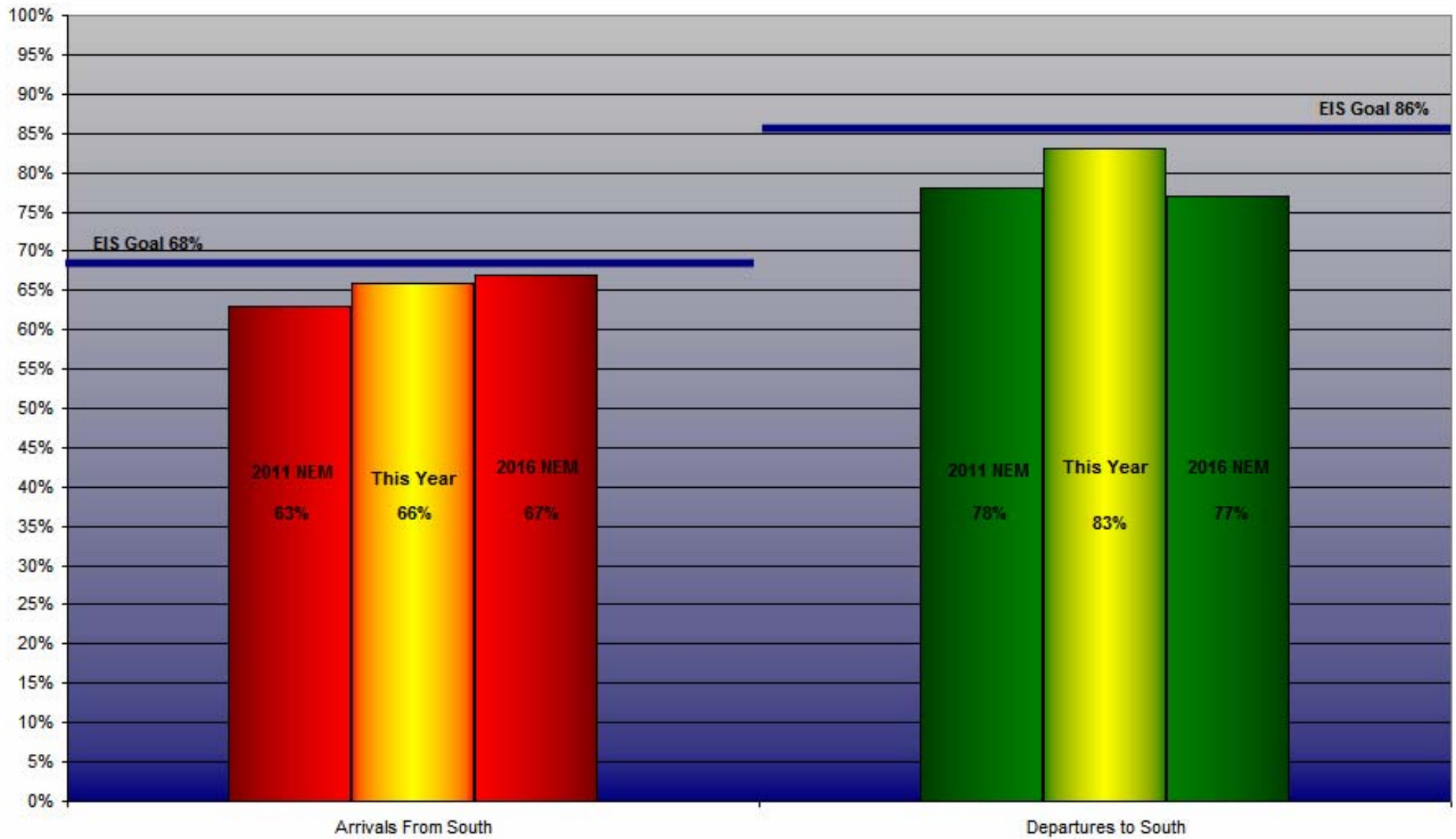
		% of all arrivals from the south									% of all departures to the south											
Date	Day	* in compliance	Runway #						Unknown Runway Use	Notes / Comments	** in compliance	Runway #						Unknown Runway Use	Notes / Comments			
			11	17L	17R	29	35L	35R				11	17L	17R	29	35L	35R					
12/03/12	Mon	0%			49	51				0	190@7-12knts, G18	100%			39	61				0		
12/04/12	Tue	98%			1	1			55	43	0				37	58		2	3	0		
12/05/12	Wed	99%			1				59	40	0				42	51		4	3	0		
12/06/12	Thu	0%			47	53					0	Calm, RA	100%			43	57				0	
12/07/12	Fri	0%			48	52					0	190-220@4-7knts,RA	100%			49	51				0	
12/08/12	Sat																					
12/09/12	Sun																					
12/10/12	Mon	96%			3	1			54	42	0		80%		38	42			12	8	0	260-300@4-8knts
12/11/12	Tue	95%			3	2			54	41	0		90%		37	53			8	2	0	
12/12/12	Wed	96%			4				57	39	0		87%		38	49			9	4	0	
12/13/12	Thu	95%			4	1			54	41	0		97%		40	57			2	1	0	
12/14/12	Fri	83%			5	12			49	34	0		97%		34	63			3		0	
12/15/12	Sat																					
12/16/12	Sun																					
12/17/12	Mon	99%			1				50	49	0		0%						55	45	0	270-290@10-14knts,G19
12/18/12	Tue	3%			43	54			2	1	0	230-240@9-10knts,G17	95%		38	57			1	4	0	
12/19/12	Wed	0%			45	55					0	120-140@5-8knts,G25	100%		52	48					0	
12/20/12	Thu	0%				1		99			0	260-270@18-24knts,G34,SN	14%			14		74	12		0	250-270@15-25knts,G34SN
12/21/12	Fri	98%			1	1			58	40	0		62%		16	46			26	12	0	260-310@6-8knts
12/22/12	Sat																					
12/23/12	Sun																					
12/24/12	Mon	100%							63	37	0		0%						42	58	0	330-030@4-9knts, (12ops)
12/25/12	Tue	100%							88	12	0	(16ops)	0%						66	34	0	020-060@11-21knts,G29,RA
12/26/12	Wed	100%							58	42	0		0%						59	41	0	280-310@5-10knts
12/27/12	Thu	92%			4	4			51	41	0		97%		38	59			2	1	0	
12/28/12	Fri	100%							56	44	0		0%						64	36	0	300-340@4-11knts,SN
12/29/12	Sat																					
12/30/12	Sun																					
12/31/12	Mon	0%			33	67					0	170-180@4-6knts,RA	100%			17	83				0	(6ops)

Preferred Flow

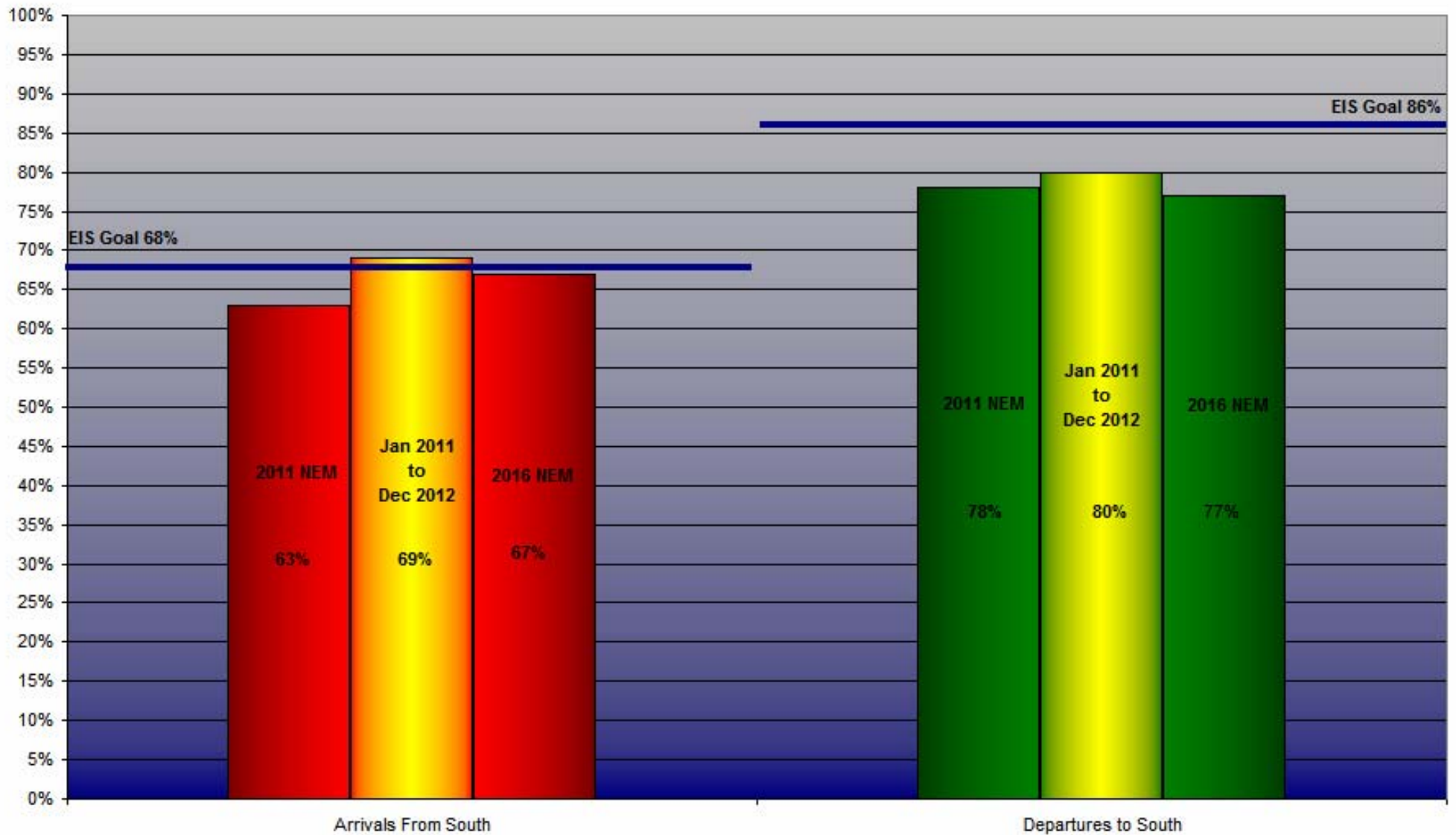
DATIS Reported Conditions Indicate Support for Non-Preferred Flow

DATIS Reported Conditions Do Not Indicate Support for Non-Preferred Flow

## Yearly Contraflow As Of December 31, 2012



# Contraflow January 2011 - December 2012





# Year-to-Year by Month Percent\* Contraflow

Arrivals From the South (Goal 68%)										Departures to the South (Goal 86%)									
	2005	2006	2007	2008	2009	2010	2011	2012	Avg		2005	2006	2007	2008	2009	2010	2011	2012	Avg
Jan	57%	54%	39%	50%	63%	94%	91%	62%	64%	Jan	66%	68%	80%	80%	74%	54%	71%	80%	72%
Feb	88%	57%	77%	50%	49%	90%	73%	69%	69%	Feb	60%	74%	76%	74%	81%	71%	63%	74%	72%
Mar	85%	64%	52%	52%	46%	80%	52%	61%	62%	Mar	68%	65%	78%	68%	67%	82%	72%	96%	75%
Apr	65%	61%	61%	44%	53%	57%	47%	78%	58%	Apr	69%	78%	67%	92%	84%	84%	83%	76%	79%
May	81%	71%	71%	66%	66%	56%	69%	72%	69%	May	77%	70%	84%	78%	84%	87%	85%	81%	81%
Jun	71%	84%	64%	38%	72%	66%	61%	79%	67%	Jun	81%	89%	85%	93%	81%	96%	93%	87%	88%
Jul	63%	84%	84%	75%	72%	61%	91%	62%	74%	Jul	84%	88%	85%	84%	82%	90%	88%	92%	87%
Aug	74%	84%	69%	92%	61%	59%	82%	49%	71%	Aug	82%	79%	87%	77%	96%	92%	91%	91%	87%
Sep	81%	84%	79%	91%	89%	70%	85%	55%	79%	Sep	74%	84%	89%	73%	82%	73%	64%	92%	79%
Oct	86%	84%	54%	76%	42%	80%	88%	62%	72%	Oct	71%	76%	68%	77%	71%	78%	63%	78%	73%
Nov	64%	84%	58%	66%	74%	85%	55%	84%	71%	Nov	73%	83%	77%	74%	73%	77%	72%	81%	76%
Dec	64%	84%	53%	58%	71%	67%	70%	64%	66%	Dec	82%	82%	74%	62%	65%	78%	65%	67%	72%
<b>Avg</b>	<b>73%</b>	<b>75%</b>	<b>63%</b>	<b>63%</b>	<b>63%</b>	<b>72%</b>	<b>72%</b>	<b>66%</b>		<b>Avg</b>	<b>74%</b>	<b>78%</b>	<b>79%</b>	<b>78%</b>	<b>78%</b>	<b>80%</b>	<b>76%</b>	<b>83%</b>	

\*Number is percentage of all operations between 10:00 PM - 7:00 AM



***LOUISVILLE  
REGIONAL  
AIRPORT  
AUTHORITY®***

**NOISE COMMENT REPORT**  
**November / December 2012**

# Comments (SDF/LOU)

## November/December 2012

Street	Zip Code	Time Received	Time	Airport	Disturbance Type	CNF Quad	Status	Operation or Comment Type <sup>1</sup>	Deviation Type <sup>2</sup>	Comments
Bourbon AV	40213	2012-11-15 14:13:47	2012-11-15 14:13:47	SDF	Other	NE	Investigated	LQHP	None	Homeowner stopped in to inquire if his property would be eligible
Packard AV	40217	2012-11-26 10:00:00	2012-11-26 10:00:00	SDF	Other	NE	Investigated	LQHP	None	Homeowner has just moved to Packard and heard from his realtor about the program and wanted more information.
Reading RD	40217	2012-11-26 11:24:19	2012-11-26 11:24:19	SDF	Other	NE	Investigated	LQHP	None	Hello, I am currently marketing a property on Reading Road, Louisville 40217. My understanding from your map that this house qualifies for Phase 6 of the Quieter Home Program. Would you be able to estimate when Phase 6 will commence based on your current status? Many thanks for any information you can give me with regard to The Quieter Home Program.
Wirth AV	40217	2012-11-27 14:09:02	2012-11-27 14:09:02	SDF	Other	NE	Investigated	LQHP	None	Homeowner inquired at the CNF meeting if his property was eligible. I took his information and advised I would get back to him.
Kahlert AV	40215	2012-11-28 09:00:00	2012-11-28 09:00:00	SDF	Other	NW	Investigated	LQHP	None	Six months ago I purchased a home in South Louisville that I had only been to in the daytime. To my surprise I am living in a night-time plane fly zone. These planes are flying fast and low. There seems to be about a seven to eight hour rush every night and so many planes. I am awakened many times in the night and if I don't get to bed early it is hard to fall asleep. I am writing to find out if my house qualifies for the Quieter Home Program?
Perennial DR	40217	2012-11-29 09:55:06	2012-11-29 09:55:06	SDF	Other	NE	Investigated	LQHP	None	Homeowner called to inquire about her eligibility. She also wanted to know if she should replace her basement windows or if the program would cover that.

1. **Standard:** Indicates the "Most Preferred" runway configuration was being utilized at the time of the comment.  
**Non Standard:** Indicates that a "Lesser Preferred" runway configuration was being utilized at the time of the comment.  
**QHP:** QuieterHome Program

2. This column is used to indicate the conditions which most likely necessitated a deviation from the standard procedures.

# Comments (SDF/LOU)

## November/December 2012

Street	Zip Code	Time Received	Time	Airport	Disturbance Type	CNF Quad	Status	Operation or Comment Type <sup>1</sup>	Deviation Type <sup>2</sup>	Comments
Alexander AV	40217	2012-12-03 12:52:00	2012-12-03 12:52:00	SDF	Other	NE	Investigated	LQHP	None	I bought my house in January of 2011 located on Alexander Avenue in the City of Parkway Village. I have been really surprised at the noise from the low, low airplanes when they are landing, and the loud (but not at extreme as the landings) from the takeoff when they are using the runway heading north/northeast from the airport. The planes that land, especially at night and in the late afternoon, are really loud, so loud you must stop any conversations you might be having if outside. The planes are so low they rattle my windows. What are the qualifications to be considered for sound reduction insulation for my home? Although I have replacement windows in my house, would there be better windows to help reduce the noise from the planes in this program? Please let me know if I have options for better quality of living in my house. I love my neighborhood but would like to have some reduction in the noise from the airplane traffic.
Alexander AV	40217	2012-12-03 15:05:44	2012-12-03 15:05:44	SDF	Other	NE	Investigated	LQHP	None	I own a house on Alexander Avenue in Parkway Village. on the noise map from the airport I am in the loudest zone. UPS has been doing a much better job lately of taking the south approach over night, however I have some very old single pane glass windows needing replaced. I was wondering if that update could be covered by the Quieter Home project, please let me know. I'm buying insulated siding for the house and was going to pay to replace the windows. I've also increased insulation in attic and crawl space. I've put a lot of my own money into making the house livable. I see your program is expanding. Your help would be greatly appreciated.
Hess LN	40217	2012-12-27 10:36:07	2012-12-27 10:36:07	SDF	Other	NE	Investigated	LQHP	None	Homeowner called to inquire about eligibility for the updates/improvements to his home.
							Received	LQHP	9	

1. **Standard:** Indicates the "Most Preferred" runway configuration was being utilized at the time of the comment.  
**Non Standard:** Indicates that a "Lesser Preferred" runway configuration was being utilized at the time of the comment.  
**QHP:** QuieterHome Program

2. This column is used to indicate the conditions which most likely necessitated a deviation from the standard procedures.

# Comments (SDF/LOU)

## November/December 2012

Street	Zip Code	Time Received	Time	Airport	Disturbance Type	CNF Quad	Status	Operation or Comment Type <sup>1</sup>	Deviation Type <sup>2</sup>	Comments
Bunker Hill CT	40205	2012-11-10 07:07:44	2012-11-10 05:15:00	SDF	Too Much Noise	NE	Investigated	Standard	None	Since about 0515 the air traffic noise has been enough to wake me up. I don't know why this problem cannot be resolved. I don't understand why planes cannot stay away from residential areas. That is my complaint. Anything you can do would be great. Get everyone onboard, it was quiet there for awhile. I guess we need to have more storms so you can keep the noise reduced, and then it comes back to twice as bad. Someone has to make up that money and make up for that lost time. I am sorry for the sarcasm, but I would really like to have my peace and quiet back.
Bunker Hill CT	40205	2012-11-11 07:08:44	2012-11-10 23:00:00	SDF	Too Much Noise	NE	Investigated	Standard	None	I am calling to report airplane noise, the evening of Saturday, November 10, or early Sunday morning November 11. There was something around midnight. Then it started with planes around 0347, I find this very disheartening that somehow things stay quiet up through the elections, don't tell me it was coincidence, and then all of a sudden we have it throughout the weekend. Anything about coordinating it, getting the pilots and air traffic controllers to work together would be appreciated. I don't need a phone call unless you are just going to verify that things are going to get better than 68% compliance.
Bunker Hill CT	40205	2012-11-12 03:50:44	2012-11-12 02:00:00	SDF	Too Much Noise	NE	Investigated	Standard	None	This is the third time this weekend. It is Monday morning November 12 at 3:48 AM, I have heard airplanes descending for landing directly over my home since about 2:21 AM. Obviously they are not coming in from the south. I don't know why it has to be this way around the holidays. No return phone call necessary because I know what you are going to say. If I have quiet, I am happy.

1. **Standard:** Indicates the "Most Preferred" runway configuration was being utilized at the time of the comment.  
**Non Standard:** Indicates that a "Lesser Preferred" runway configuration was being utilized at the time of the comment.  
**QHP:** QuieterHome Program

2. This column is used to indicate the conditions which most likely necessitated a deviation from the standard procedures.

# Comments (SDF/LOU)

## November/December 2012

Street	Zip Code	Time Received	Time	Airport	Disturbance Type	CNF Quad	Status	Operation or Comment Type <sup>1</sup>	Deviation Type <sup>2</sup>	Comments
Audubon PKY	40213	2012-11-21 09:08:53	2012-11-21 03:00:00	SDF	Over Use of Runway	NE	Investigated	Non-Standard	None	Yet another unbidden wake-up call this morning, 21 Nov, in an all-too-familiar pattern of little-to-no north wind producing non-preferred north flow on the field. When the abuse began about 3 AM, ASOS reported wind on site as 350°, 3 knots. Screening of the WebScene display yielded readings no less than 3, but no more than 6 knots for the duration of the contraflow period, even as the pounding continued unabated. These readings reaffirmed in periodic calls to the ASOS, and looks outside at undisturbed foliage. Wind finally picked up to threshold values (over 7 knots) around 0730, long after all the traffic was gone. Wasn't the airport supposed to be developing runway use decision aids to help prevent this kind of abuse?
Weller AV	40208	2012-11-21 04:49:44	2012-11-21 04:00:00	SDF	Noise At Wrong Time	NW	Investigated	Non-Standard	None	Apparently the flight pattern has been changed or something and I have a bazillion planes flying over my head. Please call me back, I would like for this to stop so I can get some f###ing sleep.
Fetter AV	40217	2012-11-21 04:56:44	2012-11-21 04:30:00	SDF	Too Much Noise	NE	Investigated	Non-Standard	None	It is Wednesday morning at 5:00 AM. I don't need to be up today but I am up. The planes sound like they are coming in my bloody house. Really, really, really loud and really, really, really frequent. They were taking off flying over at midnight as well so our neighborhood has had a total of five hours of silence before we have to deal with these planes taking off over our house. It is really a shame and my house is shaking and I am really pissed. Sunday night at 11:00 PM we had noise. Thursday night, more loud noise more loud takeoffs. Thursday, November 15 we had more loud noise at 12:30 AM a takeoff. So the contraflow is a super effective. It is a great, great thing for this city when it is implemented. So, there is my complaint.

1. **Standard:** Indicates the "Most Preferred" runway configuration was being utilized at the time of the comment.  
**Non Standard:** Indicates that a "Lesser Preferred" runway configuration was being utilized at the time of the comment.  
**QHP:** QuieterHome Program

2. This column is used to indicate the conditions which most likely necessitated a deviation from the standard procedures.

# Comments (SDF/LOU)

## November/December 2012

Street	Zip Code	Time Received	Time	Airport	Disturbance Type	CNF Quad	Status	Operation or Comment Type <sup>1</sup>	Deviation Type <sup>2</sup>	Comments
Fetter AV	40217	2012-11-24 05:33:44	2012-11-24 00:00:01	SDF	Too Much Noise	NE	Investigated	Non-Standard	None	It is 5:30 AM on Saturday. I have been up for an hour already thanks to my terrible, terrible, horrible, inconsiderate neighbor, the airport. You guys are flying out from midnight until one last night. I had a total of three and half hours of silence then at 4:30 AM it started up again. So, thanks a lot airport for making my life wonderful; you know restful, healthy, and everything that comes with getting a good nights sleep. That was last night, then I had Friday night at 11:15 PM UPS planes flying in. So, that is another night of not getting any sleep. This is just working out really great for us people in Schnitzelburg, it is a lovely thing for us. Oh yeah that's right we don't need the money, you do. So it is total bullshit all the way around, appreciate your time.
Audubon PKY	40213	2012-11-24 22:01:51	2012-11-24 04:45:00	SDF	Over Use of Runway	NE	Investigated	Non-Standard	None	The 24 Nov south-flow call, coming finally around 9:15 PM, was an add-insult-to-injury proposition, 14 to 21 hours late, depending on how you count, with no change in conditions at all. Winds light from the northwest from the outset, with runway component running 3-5 knots - yet north flow went from the start, with the contraflow departure bank punishing the nearby neighborhoods from shortly before 5 AM on a Saturday. There was a brief wind spike in the 6 o'clock hour, and an even briefer one a little after 8, but no change needed, as north flow was already wrongfully in use. The unwarranted pounding continued throughout the morning, then the afternoon, and then the evening, as if no one was in control - then the change came, as noted, just in time to show that someone actually was, but apparently just now noticed something needed changing. The textbook situation long-overdue decision aids are meant to address. Any sign?

1. **Standard:** Indicates the "Most Preferred" runway configuration was being utilized at the time of the comment.  
**Non Standard:** Indicates that a "Lesser Preferred" runway configuration was being utilized at the time of the comment.  
**QHP:** QuieterHome Program

2. This column is used to indicate the conditions which most likely necessitated a deviation from the standard procedures.

# Comments (SDF/LOU)

## November/December 2012

Street	Zip Code	Time Received	Time	Airport	Disturbance Type	CNF Quad	Status	Operation or Comment Type <sup>1</sup>	Deviation Type <sup>2</sup>	Comments
Bunker Hill CT	40205	2012-11-25 08:00:44	2012-11-25 05:30:00	LOU	Noise At Wrong Time	NE	Investigated	Standard	None	I live up here on Bunker Hill in the Highlands, I just wanted to let you know that this morning at 6:09 AM someone took off from Bowman Field and just went straight across all the residential areas heading south. I don't understand why this assault has to continue over the weekends. It is bad enough during the week but I can understand commerce being a Monday through Friday thing. I guess that is not really true anymore but anyway the ascending aircraft is getting louder and harder to take. I just wanted to put my report in. No phone calls returned. I would just like you to get people to stay within the parameters and upping that compliance from 68%, which is not really doing very well, at least in my book. I think 75% would be wonderful.
S 42nd ST	40212	2012-11-27 04:54:15	2012-11-27 02:30:00	SDF	Aircraft Too Low	NW	Investigated	Non-Standard	Weather	The planes wake me up at 3:00 in the morning. They fly so low over my house I cannot get any sleep. I have to get up at 5:00 A.M. to go to work. My husband is a stroke patient and it is very hard for us to sleep. I would like to know, and this is on Tuesday, November 27th and it started last night and the night before. Just noise. I don't understand why they are flying so low. Please let me know what is going on sir.
Fetter AV	40217	2012-11-27 06:17:14	2012-11-27 04:00:00	SDF	Too Much Noise	NE	Investigated	Non-Standard	Weather	It is 6:15 AM on Tuesday, November 27 and I have been up for an hour and a half with planes flying over my house. Rattling my home, and waking my daughter. I had just put her to sleep and now I don't have to be up until 7:00 but now I am up. I would like to have my 2 hours of sleep back from the airport and UPS. I realize that we are the little 99 percent and you are the 1 percent making all the money. Living as happy as clams making money on our backs which is total bullshit.
Kings Highway	40205	2012-11-28 09:54:15	2012-11-28 00:00:01	LOU	Other	NE	Investigated	Non-Standard	Operations	Why was there a helicopter flying low over Seneca gardens early this morning between approximately 12:30 and 1:15 AM?

1. **Standard:** Indicates the "Most Preferred" runway configuration was being utilized at the time of the comment.  
**Non Standard:** Indicates that a "Lesser Preferred" runway configuration was being utilized at the time of the comment.  
**QHP:** QuieterHome Program

2. This column is used to indicate the conditions which most likely necessitated a deviation from the standard procedures.



# Comments (SDF/LOU)

## November/December 2012

Street	Zip Code	Time Received	Time	Airport	Disturbance Type	CNF Quad	Status	Operation or Comment Type <sup>1</sup>	Deviation Type <sup>2</sup>	Comments
Fetter AV	40217	2012-12-01 08:51:35	2012-12-01 00:30:00	SDF	Too Much Noise	NE	Investigated	Non-Standard	None	I would like to complain about the noise on Fetter Avenue. The planes were landing on my head all night long. I can see the passengers faces. Is that a violation? Not noise but being able to see the passengers faces from my bedroom window. It was that close. They are really loud here Bob, I don't like it.
Bunker Hill CT	40205	2012-12-01 07:52:35	2012-12-01 04:00:00	SDF	Too Much Noise	NE	Investigated	Standard	None	The airport noise has been consistently bad from 4:14 AM until I finally decided to get out of bed at 7:49. Anyway just an update. You do not have to get back with me because I know you are not going to tell me anything I want to hear.
Fetter AV	40217	2012-12-01 09:14:35	2012-12-01 09:00:00	SDF	Too Much Noise	NE	Investigated	Standard	None	I have got planes landing on my head. I can see the passengers faces. I don't like it. It is not fun. It is really loud.
Plover RD	40213	2012-12-04 00:40:11	2012-12-04 00:00:01	SDF	Too Much Noise	NE	Investigated	Non-Standard	Weather	It is 12:30 AM. The bombing raids have been going on for almost 2 hours. Why are the planes going off to the north?
Fetter AV	40217	2012-12-04 04:07:25	2012-12-04 03:30:00	SDF	Too Much Noise	NE	Investigated	Non-Standard	Weather	It is 4 in the morning on Tuesday, December 4. It has been loud all night long. Starting at contraflow time and coming in until 3 in the morning. I don't know whether it is overcast or what the situation is. Regardless, I hope this is taken into consideration when the 65 DNL is designed. Do they compensate for these nights when the sound of air traffic just reverberates throughout the city. It is really bloody loud here. So this was a night of no sleep what so ever. So call me in the morning and let me know what you have to say about this.
Bunker Hill CT	40205	2012-12-06 07:41:35	2012-12-06 06:30:00	LOU	Too Much Noise	NE	Investigated	Standard	None	I just wanted to let you know that I could still hear the airport noise at 4:30 this morning, but the worst one was between 7:00 AM and 7:15 AM, a commuter jet taking off from Bowman Field. I don't know if you can help with that type of noise but make sure everyone cooperates and we all work within our limitations.

1. **Standard:** Indicates the "Most Preferred" runway configuration was being utilized at the time of the comment.  
**Non Standard:** Indicates that a "Lesser Preferred" runway configuration was being utilized at the time of the comment.  
**OHP:** QuieterHome Program

2. This column is used to indicate the conditions which most likely necessitated a deviation from the standard procedures.

# Comments (SDF/LOU)

## November/December 2012

Street	Zip Code	Time Received	Time	Airport	Disturbance Type	CNF Quad	Status	Operation or Comment Type <sup>1</sup>	Deviation Type <sup>2</sup>	Comments
Fetter AV	40217	2012-12-06 21:47:00	2012-12-06 21:00:00	SDF	Aircraft Too Low	NE	Investigated	Standard	None	I got cargo planes going directly over my house. I could see Christmas presents in them. Well, I could if they had windows.
Fetter AV	40217	2012-12-06 23:35:25	2012-12-06 23:00:00	SDF	Too Much Noise	NE	Investigated	Non-Standard	None	It is Thursday at about 11:30 PM and I am up because the planes are shaking my house and I can't sleep because the house is shaking. So, there is my complaint. So while UPS, the airport, the airlines and everyone else profits, profits, profits. Everyone else suffers, suffers, suffers, It sucks. So there is my complaint. File that under another pissed off neighbor.
Plover RD	40213	2012-12-07 01:05:11	2012-12-07 00:30:01	SDF	Too Much Noise	NE	Investigated	Non-Standard	None	I talked to you the other day about these stupid obnoxious planes. It is 1 o'clock in the morning on Friday, December 5th. About 10 minutes ago I was rudely awakened from sound, badly needed sleep by the sound of obnoxious planes. It is now non-stop.
Reading RD	40217	2012-12-09 16:59:31	2012-12-09 16:00:00	SDF	Vibrations	NE	Investigated	Standard	Weather	I'm sitting in my living room, my house is vibrating from ground roar!
Boulevard Napoleon	40205	2012-12-11 19:37:14	2012-12-10 22:00:00	SDF	Too Much Noise	NE	Investigated	Standard	None	Last night the noise from the UPS planes were shaking the windows and were overly loud at my home at my home on Boulevard Napoleon. It occurred multiple times throughout the night. My neighborhood is not supposed to be in the flight paths so I am unsure why we experienced all of this noise last night. I would like to know where the closest noise monitor is located to my neighborhood and how it is monitored. Are reports of the noise monitors available for access/review and interpretation by the general public? If not, why not?

1. **Standard:** Indicates the "Most Preferred" runway configuration was being utilized at the time of the comment.  
**Non Standard:** Indicates that a "Lesser Preferred" runway configuration was being utilized at the time of the comment.  
**QHP:** QuieterHome Program

2. This column is used to indicate the conditions which most likely necessitated a deviation from the standard procedures.

# Comments (SDF/LOU)

## November/December 2012

Street	Zip Code	Time Received	Time	Airport	Disturbance Type	CNF Quad	Status	Operation or Comment Type <sup>1</sup>	Deviation Type <sup>2</sup>	Comments
Drayton DR	40205	2012-12-11 22:29:48	2012-12-11 21:00:00	LOU	Noise At Wrong Time		Investigated	Non-Standard	Ops	I live across the street from Bowman Field. It is Tuesday at about 10:30 PM and starting at about 9:00 PM tonight, an airplane, looking on the website, I think it is the prop transit, started coming over our house. It is now 10:30 PM and we have heard it fly over our house about 6 or 7 times. It sounds like it is dive bombing us. I would like it to stop. It is real late at night and I have 2 sick kids being woke up by this loud airplane flying over our house.
Lytle ST	40203	2012-12-17 14:20:48	2012-12-17 14:00:00	SDF	Too Much Noise	NW	Investigated	Standard	None	I called 311 about the noise and they said that you had a program for doing something about the noise. I called the number they gave me and the man told me I was not on his list however, he said I should call you and you could give me more information. The noise here has been really bad. The planes go over at all times of the day and night. I really started noticing it about 6-8 months ago. It was even really bad in the summer. I have a noise meter and sometimes it registers 9 dB. I think you are doing this because this is the west end. Everything always get dumped on the west end.
Lillian AV	40208	2012-12-18 04:38:46	2012-12-18 02:00:00	SDF	Too Much Noise	NW	Investigated	Non-Standard	Weather	It is 4:30 AM, I have been awake since about 2 AM. Every 25 to 30 seconds UPS flies another plane over at a low enough altitude to make everything in the house rumble. Instead of the standard response that I get, can someone PLEASE TELL ME WHO I CAN CONTACT TO MAKE IT STOP!!! I just want to be able to get a decent night of sleep without them waking me up. They put up barriers along interstates to stop traffic noise in neighborhoods, but NO ONE DOES ANYTHING ABOUT AIRCRAFT NOISE AT NIGHT. PLEASE HELP ME.

1. **Standard:** Indicates the "Most Preferred" runway configuration was being utilized at the time of the comment.  
**Non Standard:** Indicates that a "Lesser Preferred" runway configuration was being utilized at the time of the comment.  
**QHP:** QuieterHome Program

2. This column is used to indicate the conditions which most likely necessitated a deviation from the standard procedures.

# Comments (SDF/LOU)

## November/December 2012

Street	Zip Code	Time Received	Time	Airport	Disturbance Type	CNF Quad	Status	Operation or Comment Type <sup>1</sup>	Deviation Type <sup>2</sup>	Comments
Audubon PKY	40213	2012-12-18 08:25:50	2012-12-18 03:30:00	SDF	Over Use of Runway	NE	Investigated	Non-Standard	Weather	Another unbidden wake-up call, as the contraflow departure bank roared into the northern neighborhoods starting shortly before 4 AM. Winds from the west carried traffic into the densest part of the nearby residential areas, while generating nothing approaching an adequate tailwind component to justify the abuse, save one brief shift toward the north late in the 5 o'clock hour, that lasted about 15 minutes. Normal south flow resumed, in pretty much the same conditions, just before 8, just to add insult to injury. Generously assuming this was just careless traffic control, we can add another grain of sand to the mountain of evidence underscoring the need for runway use decision aids approved over ten years ago. Any news on those?
Clarks LN	40217	2012-12-18 21:09:48	2012-12-18 12:30:00	SDF	Over Use of Runway	NE	Investigated	Standard	None	It is 9:10 at night on December 18 and all day since early this morning the airplanes have been flying non-stop over our house. We are supposedly not in the noise zone. So I am calling you and I will continue to call you until it stops.
Fetter AV	40217	2012-12-19 00:52:00	2012-12-19 00:30:00	SDF	Too Much Noise	NE	Investigated	Non-Standard	Weather	As you can hear in the background we have planes going over and they have been going over for 3 hours now. I would like for you to get this to the FAA please.

1. **Standard:** Indicates the "Most Preferred" runway configuration was being utilized at the time of the comment.  
**Non Standard:** Indicates that a "Lesser Preferred" runway configuration was being utilized at the time of the comment.  
**QHP:** QuieterHome Program

2. This column is used to indicate the conditions which most likely necessitated a deviation from the standard procedures.

# Comments (SDF/LOU)

## November/December 2012

Street	Zip Code	Time Received	Time	Airport	Disturbance Type	CNF Quad	Status	Operation or Comment Type <sup>1</sup>	Deviation Type <sup>2</sup>	Comments
Audubon PKY	40213	2012-12-20 00:03:46	2012-12-19 05:00:00	SDF	Over Use of Runway	NE	Investigated	Standard	None	Despite nearly identical conditions, unlike yesterday it appeared traffic control would hold to prescribed flow during the morning contraflow departure bank. But in the bottom of the 5 o'clock hour, there was a brief up tick in tailwind component, and the field immediately switched to non-preferred north flow, with attendant impact on nearby neighborhoods. The wind abated to its former sub-threshold levels about ten minutes later - but apparently no one noticed, as the field remained in its abusive state for the rest of the morning, straight through to the late-morning reverse-flow period. We groan under the weight of evidence pressing for modern decision cues - and segue into a reminder that we're also persisting in a reverse-flow procedure that the FAA disapproved, for operational, not noise-abatement, purposes, more then three years ago. Aside from the abuse of the community, won't this get us into trouble at some point?
Clarks LN	40217	2012-12-19 20:50:48	2012-12-19 12:30:00	SDF	Too Much Noise	NE	Investigated	Standard	None	It is 8:48 PM on Wednesday the 19th of December. I am just trying to understand why the airplanes are flying over my house when you all say they are not. This is the second day in a row. I would really like for someone to call me back. Because I have been to several of your meeting's and you all tell us we are not in the zone, but we are.
Fetter AV	40217	2012-12-20 00:31:00	2012-12-20 00:00:01	SDF	Over Use of Runway	NE	Investigated	Non-Standard	Weather	It is now Thursday morning. And once again contraflow is not being used. Again for whatever reason, we are still up, and it does not go away because there are winds or other reasons. We are still up and we are still affected. So I am going to let you listen to this really loud a** plane go by. Let you enjoy what you think we do not experience. Apparently humans have ears and can hear but we are not humans because we cannot hear it. Well now you get to hear it, and enjoy it and suck it up. So I would appreciate a call back in the morning after you get a good nights sleep and come into work and hear my complaint and deal with it.

1. **Standard:** Indicates the "Most Preferred" runway configuration was being utilized at the time of the comment.  
**Non Standard:** Indicates that a "Lesser Preferred" runway configuration was being utilized at the time of the comment.  
**QHP:** QuieterHome Program

2. This column is used to indicate the conditions which most likely necessitated a deviation from the standard procedures.

# Comments (SDF/LOU)

## November/December 2012

Street	Zip Code	Time Received	Time	Airport	Disturbance Type	CNF Quad	Status	Operation or Comment Type <sup>1</sup>	Deviation Type <sup>2</sup>	Comments
Fetter AV	40217	2012-12-20 00:33:00	2012-12-20 00:00:01	SDF	Too Much Noise	NE	Investigated	Non-Standard	Weather	It is 12:32 AM Thursday morning. 2 minutes after I called you the last time. We have another plane going over so I am going to let you experience this for awhile like I have to for the next 3 hours every two minutes. (sound of plane going over).
Fetter AV	40217	2012-12-20 00:35:00	2012-12-20 00:00:01	SDF	Too Much Noise	NE	Investigated	Non-Standard	Weather	12:34 AM and another plane is going over my house. So I would like to let the FAA know that this does wake us up, and disrupt our lives.
Fetter AV	40217	2012-12-20 00:38:00	2012-12-20 00:00:01	SDF	Too Much Noise	NE	Investigated	Non-Standard	Weather	It is 12:36 AM and I know it seems strange but I wanted to let you know that we have a plane flying over our house right now and it is keeping me up. It is also keeping a lot of my neighbors up. So I would like for the FAA to know that this is a real thing that is happening to us.
Fetter AV	40217	2012-12-20 00:42:00	2012-12-20 00:15:01	SDF	Too Much Noise	NE	Investigated	Non-Standard	Weather	It is 12:40 AM on Thursday morning. There is a plane flying over my house right now, as they did last night, as they did the night before and guess who did not get sleep. Fortunately, I know I am not the only one and I know my neighbors did not get any sleep either. This sucks, it is not right, and we are tired of it.
Audubon PKY	40213	2012-12-21 10:33:46	2012-12-21 10:00:00	SDF	Aircraft Off Course	NE	Investigated	Non-Standard	Weather	A most puzzling operation this morning, with strong west winds nominally requiring the crosswind runway, as occurred yesterday. But while arrivals are directed to runway 29, departures are in north flow on 35. Aside from seeming dangerous, given the crossing pattern, this maximizes noise exposure, combining unwarranted north flow with eastward drift of departures over the most populated areas. What's the story?

1. **Standard:** Indicates the "Most Preferred" runway configuration was being utilized at the time of the comment.  
**Non Standard:** Indicates that a "Lesser Preferred" runway configuration was being utilized at the time of the comment.  
**QHP:** QuieterHome Program

2. This column is used to indicate the conditions which most likely necessitated a deviation from the standard procedures.

# Comments (SDF/LOU)

## November/December 2012

Street	Zip Code	Time Received	Time	Airport	Disturbance Type	CNF Quad	Status	Operation or Comment Type <sup>1</sup>	Deviation Type <sup>2</sup>	Comments
Lillian AV	40208	2012-12-22 03:45:46	2012-12-22 03:15:00	SDF	Too Much Noise	NW	Investigated	Non-Standard	None	Yes I am complaining about UPS. It is 3:38 AM. This is getting really old, really fast. Getting woke up by planes flying over so low that the WHOLE HOUSE RUMBLES SO MUCH THE PICTURES ON TYE WALLS RATTLE! we live on Lillian Avenue and the noise here is horrendous. You people would understand if you lived here and maybe someone would do something if important people lived here. We lived here in this neighborhood long before the airport expansion and no one ever did any kind of noise analysis here to see how we would be impacted.
Audubon PKY	40213	2013-01-08 20:26:46	2012-12-25 04:00:00	SDF	Over Use of Runway	NE	Investigated	Non-Standard	None	Some catch-up reporting from the holidays. In an extended period of north winds, with the attendant abuses of north traffic flow over the most densely populated neighborhoods near the airport, you'd think controllers would be looking for any opportunity to afford some relief by resuming normal preferred operations to the south when possible. But, as usual, you'd be mistaken. The most poignant example is Christmas Day itself - all is calm, all is bright, sleep in heavenly peace, right? But historical files indicate that wind speed abated around 4 AM, and, with only a brief spike to 8 or 9 knots early in the 6 o'clock hour, remained well below threshold values the whole day. No matter - non-preferred north flow persisted the entire period, as any home video recording interrupted celebrations and exchanges of presents around the tree will attest. Thanks, Mr. Grinch...If only someone had left a long-promised decision aid in the ATCT stocking. Santa-LRAA, where are you?

1. **Standard:** Indicates the "Most Preferred" runway configuration was being utilized at the time of the comment.  
**Non Standard:** Indicates that a "Lesser Preferred" runway configuration was being utilized at the time of the comment.  
**QHP:** QuieterHome Program

2. This column is used to indicate the conditions which most likely necessitated a deviation from the standard procedures.

# Comments (SDF/LOU)

## November/December 2012

Street	Zip Code	Time Received	Time	Airport	Disturbance Type	CNF Quad	Status	Operation or Comment Type <sup>1</sup>	Deviation Type <sup>2</sup>	Comments
Bunker Hill CT	40205	2012-12-25 10:15:35	2012-12-25 10:00:00	SDF	Other	NE	Investigated	Standard	None	I just wanted to let you know that today is Christmas Day, December 25. At 10:15 AM. Last night I decided to try and sleep without air filters or noise machines to see how quiet it would be and except for 1 plane that came through around somewhere around midnight and thinking about making this phone call to you a plane just came though at 10:09 this morning it has been relatively quiet. I just wanted to thank you for the nice Christmas gift. I wish it could be this way again I have not had this much quite for at least 2 years. I just wanted to make a report.
Lillian AV	40208	2012-12-26 03:10:46	2012-12-26 02:30:00	SDF	Too Much Noise	NW	Investigated	Non-Standard	None	Yes I am complaining again. It is 3:07 AM, some of us actually like getting sleep at night without being woke up. I guess no one there gives a damn about the people in the south end of Louisville.
Lillian AV	40208	2012-12-27 03:21:46	2012-12-27 03:00:00	SDF	Too Much Noise	NW	Investigated	Non-Standard	None	It is 3:17 AM. can't you people give it a rest. I am sick of getting woke up every night this week from this crap. There is more sky than this little slice over Lillian Avenue! I guess I will have to upload my videos to youtube so the whole world can see how UPS treats their neighbors and then maybe no one will want to use them to ship anything. Then they can put all those damn airplanes in the hanger and leave them there.
Plover RD	40213	2012-12-27 04:53:25	2012-12-27 04:30:00	SDF	Over Use of Runway	NE	Investigated	Non-Standard	None	It is almost 5 in the morning on Thursday morning and the bombing raids have been going on for almost an hour. But here is the thing. I can tell that some of them have been taking off to the south. So if some of them can take off from the south, they all can take off to the south. But no, half of them are taking off to the north. So the question is; why? I have gotten 3 hours of sleep tonight. I cannot live on 3 hours of sleep a night.

1. **Standard:** Indicates the "Most Preferred" runway configuration was being utilized at the time of the comment.  
**Non Standard:** Indicates that a "Lesser Preferred" runway configuration was being utilized at the time of the comment.  
**QHP:** QuieterHome Program

2. This column is used to indicate the conditions which most likely necessitated a deviation from the standard procedures.



# Comments (SDF/LOU)

## November/December 2012

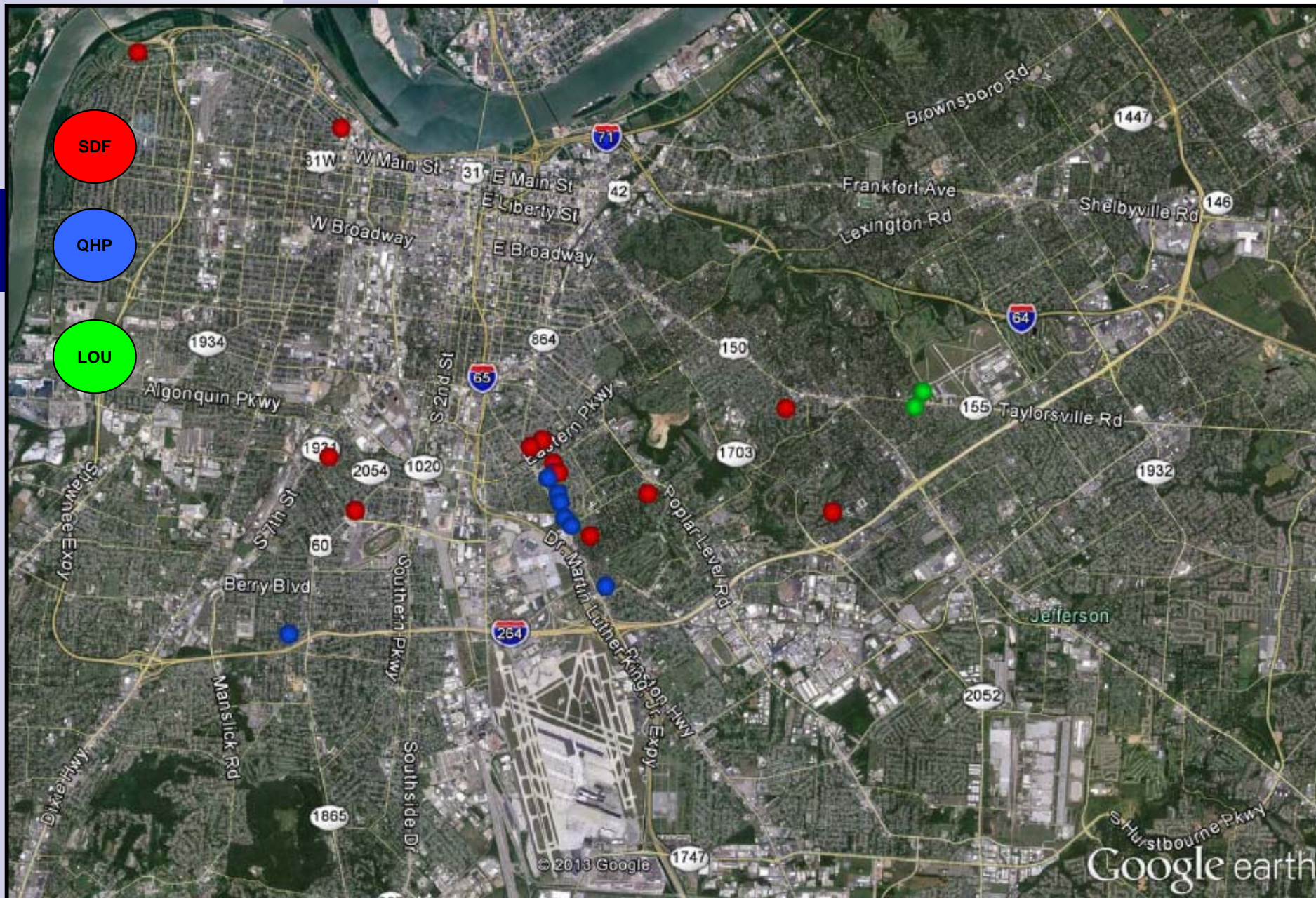
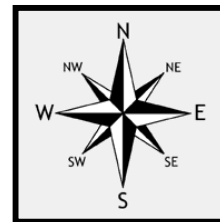
Street	Zip Code	Time Received	Time	Airport	Disturbance Type	CNF Quad	Status	Operation or Comment Type <sup>1</sup>	Deviation Type <sup>2</sup>	Comments
Bunker Hill CT	40205	2012-12-27 21:48:35	2012-12-27 21:48:00	SDF	Other	NE	Investigated	Standard	None	It is Thursday evening December 27 at 9:00 in the evening. I was calling because I heard on a newscast that we have a new runway alpha that is supposed to be up and running sometime soon. If you could call me back and give me some information on how this will or will not impact the air traffic that I am constantly hearing where my home is located in the upper Highlands neighborhood. I would really appreciate it. It will help me make a decision on whether or not I move because the airport noise I am experiencing now. If it will impact the amount of noise I will hear more or less of, I would really like to know that.
							Received	LRAA	44	

1. **Standard:** Indicates the “Most Preferred” runway configuration was being utilized at the time of the comment.  
**Non Standard:** Indicates that a “Lesser Preferred” runway configuration was being utilized at the time of the comment.  
**QHP:** QuieterHome Program

2. This column is used to indicate the conditions which most likely necessitated a deviation from the standard procedures.

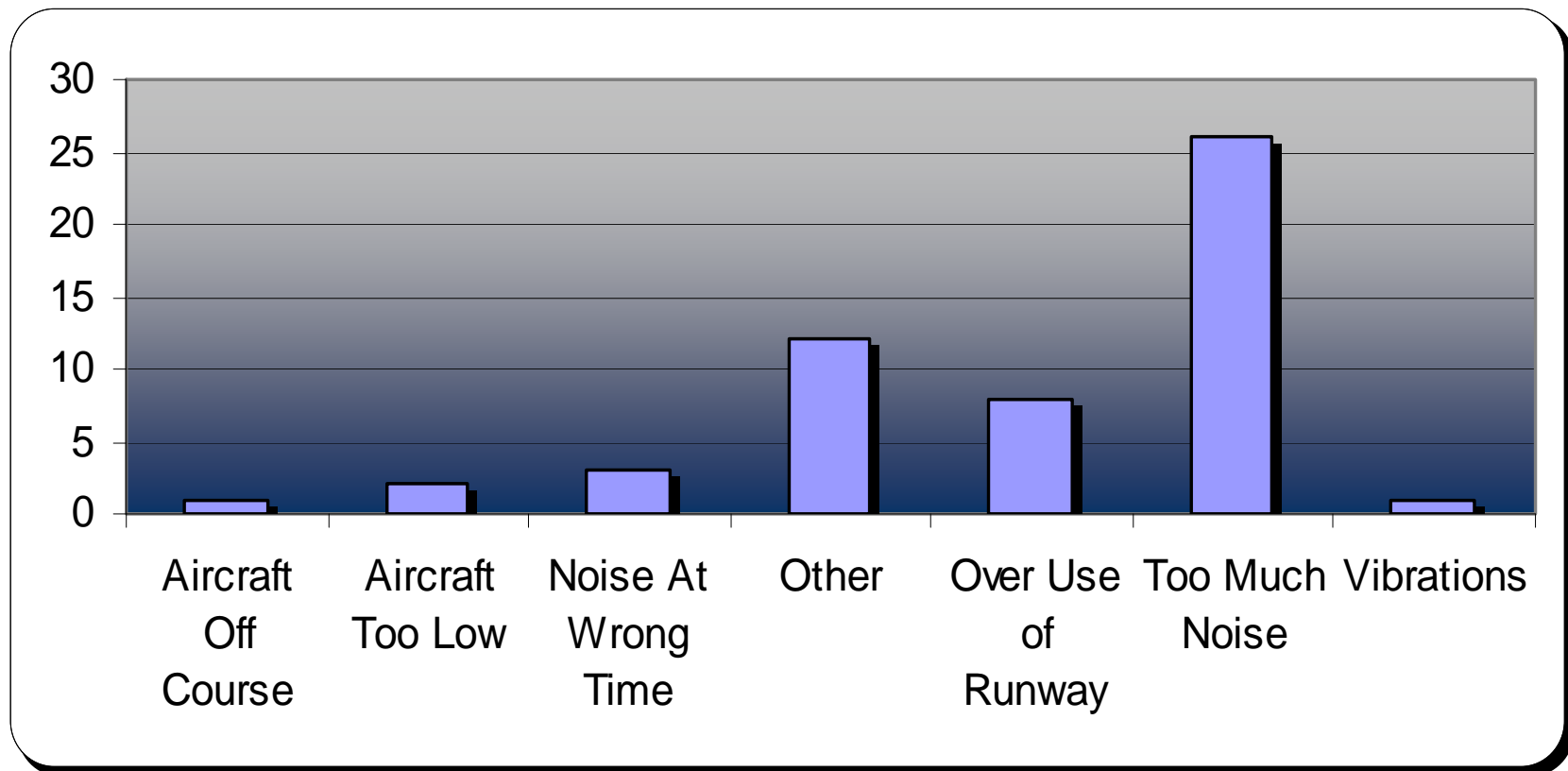
# Comment Location (SDF and LOU)

November / December 2012



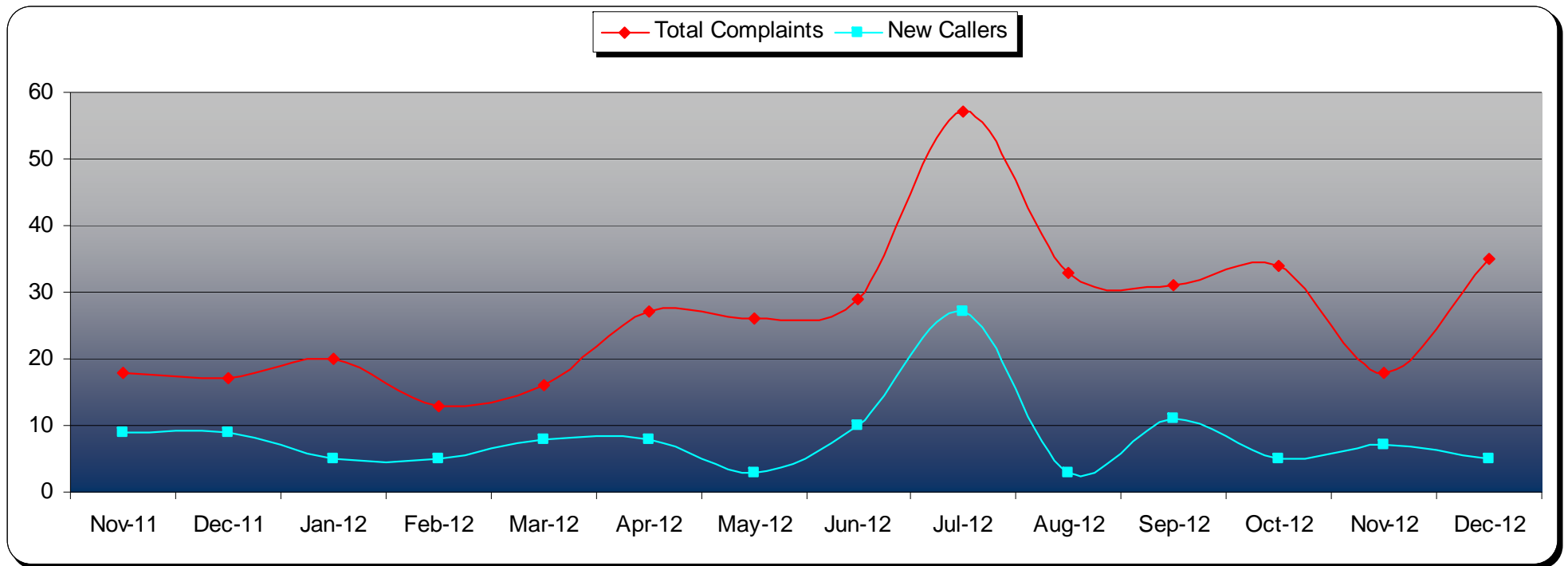
# Comment Type\* (SDF and LOU)

November / December 2012



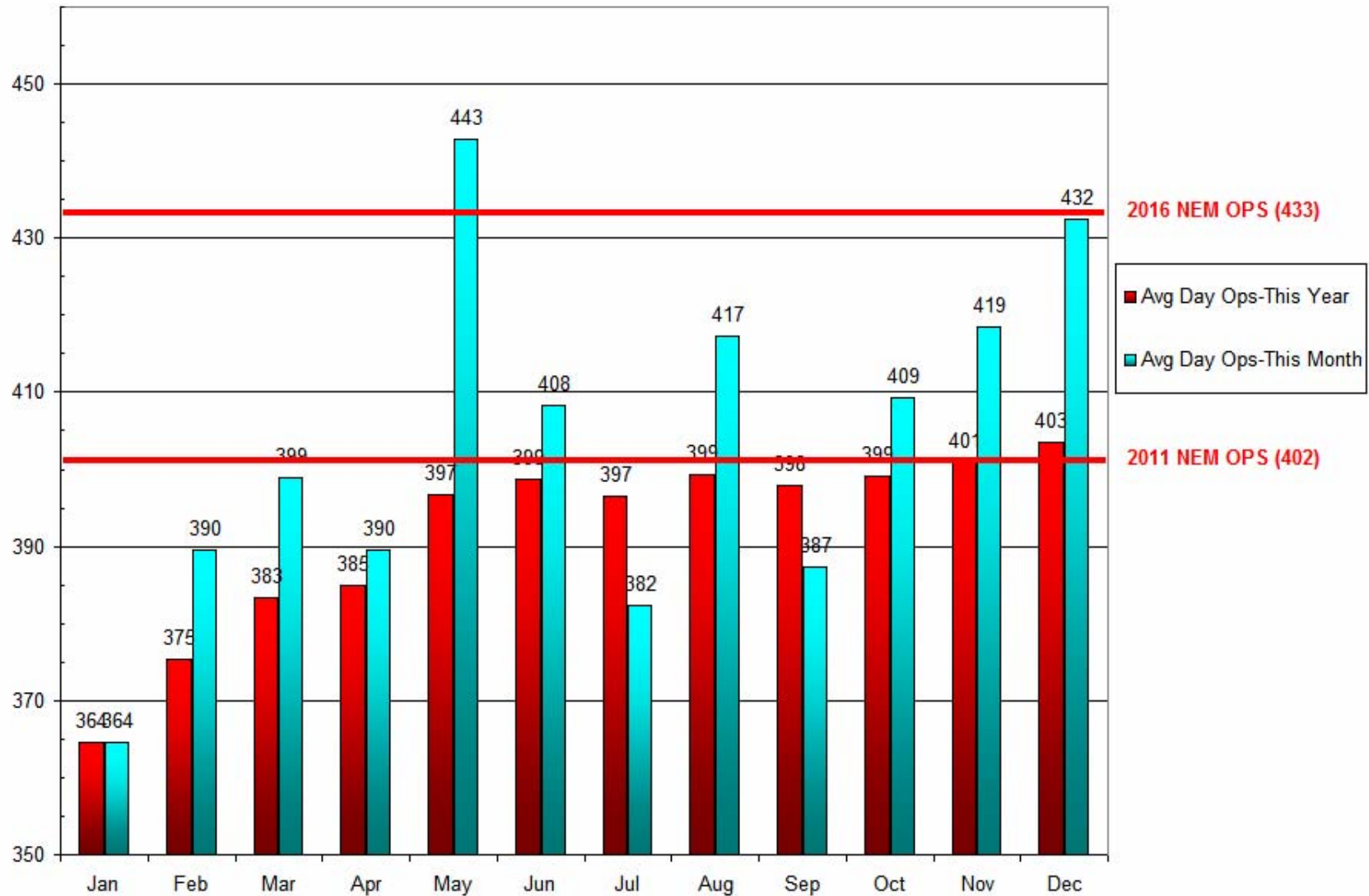
# New Address/Comments per Month (SDF and LOU)

November / December 2012



# Operations (SDF)





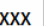
As of December 31, 2012



Source: Louisville <http://www.flylouisville.com/regional-airport-authority/reports-and-statistics/>

# Daily Runway Use Uncorrected (SDF) November 2012

Flow	Time	Thu 11/1	Fri 11/2	Sat 11/3	Sun 11/4	Mon 11/5	Tue 11/6	Wed 11/7	Thu 11/8	Fri 11/9	Sat 11/10	Sun 11/11	Mon 11/12	Tue 11/13	Wed 11/14	Thu 11/15	Fri 11/16	Sat 11/17	Sun 11/18	Mon 11/19	Tue 11/20	Wed 11/21	Thu 11/22	Fri 11/23	Sat 11/24	Sun 11/25	Mon 11/26	Tue 11/27	Wed 11/28	Thu 11/29	Fri 11/30	Time	
North Flow	0:00																															0:00	
	0:30																																0:30
	1:00																																1:00
	1:30																																1:30
	2:00																																2:00
South Flow	2:30																															2:30	
	3:00																															3:00	
	3:30																															3:30	
	4:00																															4:00	
	4:30																															4:30	
	5:00																															5:00	
	5:30																															5:30	
	6:00																															6:00	
	6:30																																6:30
	7:00																																7:00
9:00																																9:00	
North Flow	9:30																															9:30	
	10:00																															10:00	
	10:30																															10:30	
	11:00																															11:00	
	12:30																															12:30	
South Flow	13:00																															13:00	
	13:30																															13:30	
	14:00																															14:00	
	14:30																															14:30	
	15:00																															15:00	
	15:30																															15:30	
	16:00																															16:00	
	16:30																															16:30	
	17:00																																17:00
	21:30																																21:30
North Flow	22:00																															22:00	
	22:30																															22:30	
	23:00																															23:00	
	0:00																															0:00	

	Preferred Flow
	DATIS Reported Conditions Indicate Support for Non-Preferred Flow
	DATIS Reported Conditions Do Not Indicate Support for Non-Preferred Flow
	South Flow is Preferred Flow from 09:30 Saturday - 09:30 Monday
	Complaint

Source: Louisville International Airport Aircraft Flight Tracking and Noise Management System (AFTNMS)

# Daily Runway Use (SDF)

Tower Comments November 2012

Day	Date	Time	Comment
thu	1-Nov-12	1530-1900	Wind 3211
fri	2-Nov-12		
sat	3-Nov-12		
sun	4-Nov-12	0000-0500	Reason not documented
sun	4-Nov-12	1930-2030	Wind 0209
mon	5-Nov-12		
tue	6-Nov-12		
wed	7-Nov-12	1530-2200	Wind 3605 wet runways
thu	8-Nov-12		
fri	9-Nov-12	0930-1230	Wind 2311 on short final
fri	9-Nov-12	2200-0000	Wind 1922 on short final
sat	10-Nov-12	0000-0230	Wind 2220 on short final
sun	11-Nov-12		
mon	12-Nov-12		
tue	13-Nov-12	1730-2130	Reason not documented
wed	14-Nov-12	1730-2130	Wind 0311, reason not documented after 1855
thu	15-Nov-12		
fri	16-Nov-12	1300-2130	Wind 3508
sat	17-Nov-12		
sun	18-Nov-12		
mon	19-Nov-12		
tue	20-Nov-12		
wed	21-Nov-12	0300-0900	Wind 3608
thu	22-Nov-12	1130-1230	Wind 2425 on short final
fri	23-Nov-12		
sat	24-Nov-12	0300-2030	Wind 3308.
sun	25-Nov-12	2200-0000	Log shows south operation
mon	26-Nov-12	0930-1000	Late change due to traffic volume
tue	27-Nov-12	1300-1730	Wind 3609
wed	28-Nov-12		
thu	29-Nov-12		
fri	30-Nov-12	0930-1030	Wind 2107, 2335 on short final
fri	30-Nov-12	2200-0000	Wind 2425 on short final

# Daily Runway Use Uncorrected (SDF) December 2012

Flow	Time	Sat 12/1	Sun 12/2	Mon 12/3	Tue 12/4	Wed 12/5	Thu 12/6	Fri 12/7	Sat 12/8	Sun 12/9	Mon 12/10	Tue 12/11	Wed 12/12	Thu 12/13	Fri 12/14	Sat 12/15	Sun 12/16	Mon 12/17	Tue 12/18	Wed 12/19	Thu 12/20	Fri 12/21	Sat 12/22	Sun 12/23	Mon 12/24	Tue 12/25	Wed 12/26	Thu 12/27	Fri 12/28	Sat 12/29	Sun 12/30	Mon 12/31	Time		
North Flow	0:00				XXX			XXX												XXX	XXX												XXX		
	0:30																																		
	1:00																																		
	1:30																																		
	2:00																																		
	2:30	XXX																																	
South Flow	3:00																																		
	3:30																																		
	4:00				XXX																			XXX					XXX	XXX					
	4:30	XXX																		XXX															
	5:00																												XXX						
	5:30																																		
	6:00																				XXX														
	6:30																					XXX													
	7:00																																		
	7:30																																		
	8:00																																		
	8:30																			XXX															
9:00	XXX																																		
North Flow	9:30																																		
	10:00																																		
	10:30																						XXX												
	11:00																																		
	11:30																																		
	12:00																																		
South Flow	12:30																																		
	13:00																																		
	13:30																																		
	14:00																																		
	14:30																																		
	15:00																																		
	15:30																																		
	16:00																																		
	16:30																																		
	17:00																																		
	17:30																																		
	18:00																																		
North Flow	19:00																																		
	19:30																																		
	20:00																												XXX						
	20:30																																		
	21:00																																		
	21:30								XXX												XXX	XXX													
22:00																																			

Preferred Flow  
 DATIS Reported Conditions Indicate Support for Non-Preferred Flow  
 DATIS Reported Conditions Do Not Indicate Support for Non-Preferred Flow  
 South Flow is Preferred Flow from 09:30 Saturday - 09:30 Monday  
XXX Complaint

Source: Louisville International Airport Aircraft Flight Tracking and Noise Management System (AFTNMS)



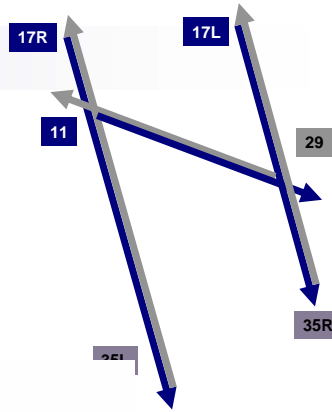
# Daily Runway Use (SDF)

Tower Comments December 2012

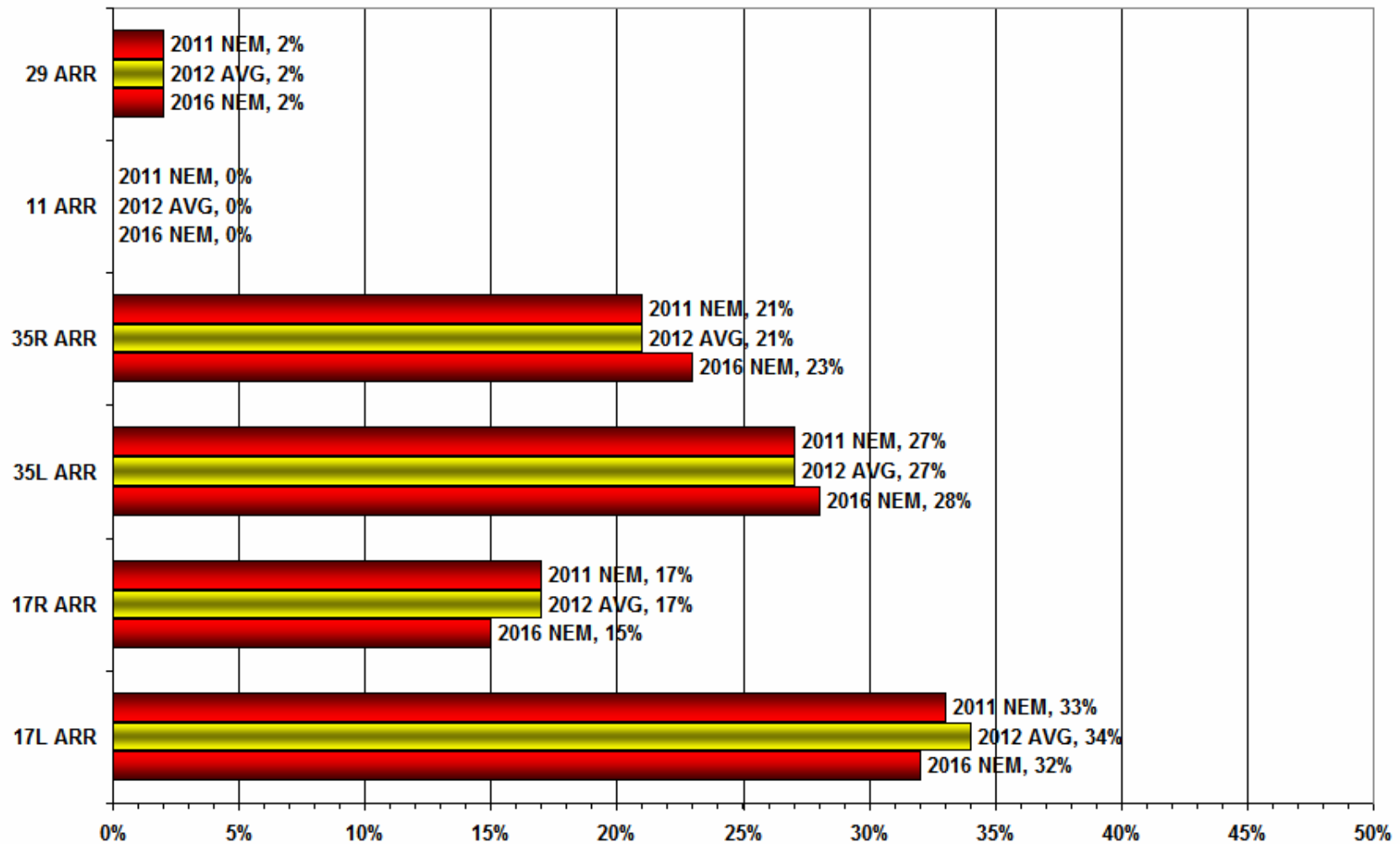
Day	Date	Time	Comment
sat	1-Dec-12	0000-0230	Wind 2325 on short final
sun	2-Dec-12		
mon	3-Dec-12		
tue	4-Dec-12		
wed	5-Dec-12	1300-1900	Wind 0112 on short final
thu	6-Dec-12	2200-0000	Wet runways, south winds forecast
fri	7-Dec-12	0000-0230	Wet runways, strong south winds on final
sat	8-Dec-12		
sun	9-Dec-12	0000-0530	Wet runways, wind 0306
mon	10-Dec-12	1930-2200	Wet runways, wind 3112
tue	11-Dec-12	0300-0700	Log shows south operation at 0316
wed	12-Dec-12		
thu	13-Dec-12		
fri	14-Dec-12		
sat	15-Dec-12		
sun	16-Dec-12		
mon	17-Dec-12	2000-2200	Wind 3612
tue	18-Dec-12		
wed	19-Dec-12		
thu	20-Dec-12		
fri	21-Dec-12		
sat	22-Dec-12	0300-0700	Wind 3325 on final
sun	23-Dec-12		
mon	24-Dec-12	1300-1530	Wet runways, wind 2908
tue	25-Dec-12	0700-0900	Wind 0311
tue	25-Dec-12	1300-2000	Wind 0310
wed	26-Dec-12		
thu	27-Dec-12	0300-0700	Wind 3009, strong north wind on final
thu	27-Dec-12	1300-1400	Flight Check, then went south at 1328
fri	28-Dec-12		
sat	29-Dec-12		
sun	30-Dec-12	0000-0600	RWY 29, wind 2914G21, went south @ 0450
mon	31-Dec-12		

# Runway Use (SDF)

Arrivals As of December 31, 2012



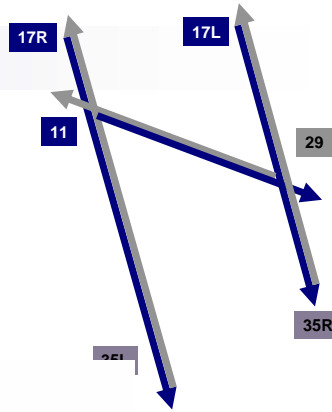
**NEM vs. Actual**



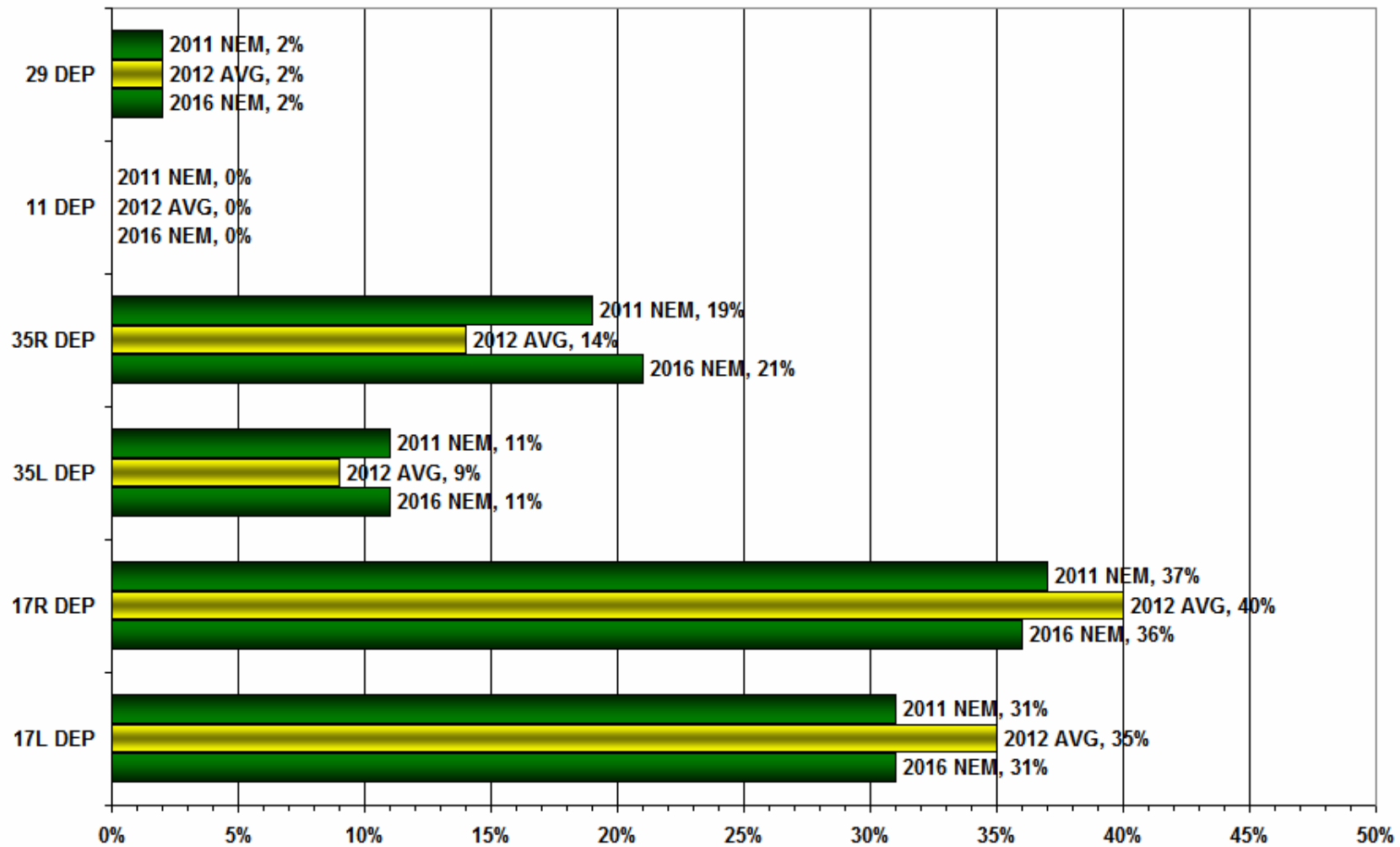
Source: Louisville International Airport Aircraft Flight Tracking and Noise Management System (AFTNMS)

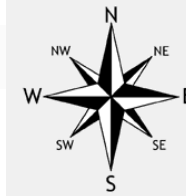
# Runway Use (SDF)

Departures As of December 31, 2012



**NEM vs. Actual**



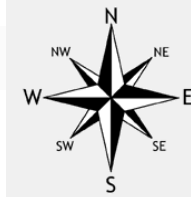


# Runway Use 0930L-1230L<sub>(SDF)</sub>

As of December 31, 2012

	Arrival Percentage by Runway							% From South	Arrival Count	Departure Percentage by Runway							% To North	Departure Count
	11	17L	17R	29	35L	35R	11			17L	17R	29	35L	35R				
Jan-11	0	12	12	3	38	35	73		0	13	12	6	8	61	69			
Feb-11	0	17	13	4	41	25	66		0	16	15	6	15	48	63			
Mar-11	0	28	19	0	32	19	51		0	26	21	1	14	38	52			
Apr-11	0	39	19	0	20	22	42		0	39	19	1	5	36	41			
May-11	0	34	19	1	25	21	46		0	30	22	2	4	42	46			
Jun-11	0	21	22	0	37	22	59		0	20	15	2	14	49	63			
Jul-11	0	25	13	0	38	24	62		0	23	13	0	18	46	64			
Aug-11	0	14	13	0	31	41	72		0	13	11	1	17	58	75			
Sep-11	0	16	23	0	33	28	61		0	15	22	1	7	55	62			
Oct-11	0	13	13	5	33	36	69		0	12	11	5	18	54	72			
Nov-11	0	32	21	0	25	22	47		0	35	18	0	4	43	47			
Dec-11	0	21	17	2	42	18	60		0	20	15	3	17	45	62			
Jan-12	0	27	24	9	29	11	40	653	1	33	17	14	14	21	35	306		
Feb-12	0	9	18	8	35	30	65	662	0	11	16	10	10	53	63	345		
Mar-12	0	30	38	0	15	17	32	684	0	29	36	2	0	33	33	404		
Apr-12	0	15	10	1	43	31	74	589	0	13	10	5	17	55	72	336		
May-12	0	27	22	0	29	21	50	745	0	25	25	0	15	34	49	449		
Jun-12	0	11	16	4	46	26	72	652	0	12	14	4	19	52	71	427		
Jul-12	0	6	32	0	49	13	62	619	0	8	27	3	45	17	62	384		
Aug-12	0	26	23	0	34	17	51	717	0	24	26	1	21	28	49	437		
Sep-12	0	29	10	0	21	40	61	655	0	33	10	1	13	43	56	353		
Oct-12	1	20	26	3	20	31	51	740	2	24	19	3	9	43	52	475		
Nov-12	0	10	4	3	50	33	83	762	0	7	4	3	9	77	86	390		
Dec-12	0	18	12	5	41	24	65	779	0	17	9	3	8	63	71	412		
Monthly Avg.	0	21	18	2	34	25	59		0	21	17	3	13	46	59			

Source: Louisville International Airport  
Aircraft Flight Tracking and Noise Management System (AFTNMS)



# Gate Compliance by Runway

As of December 31, 2012

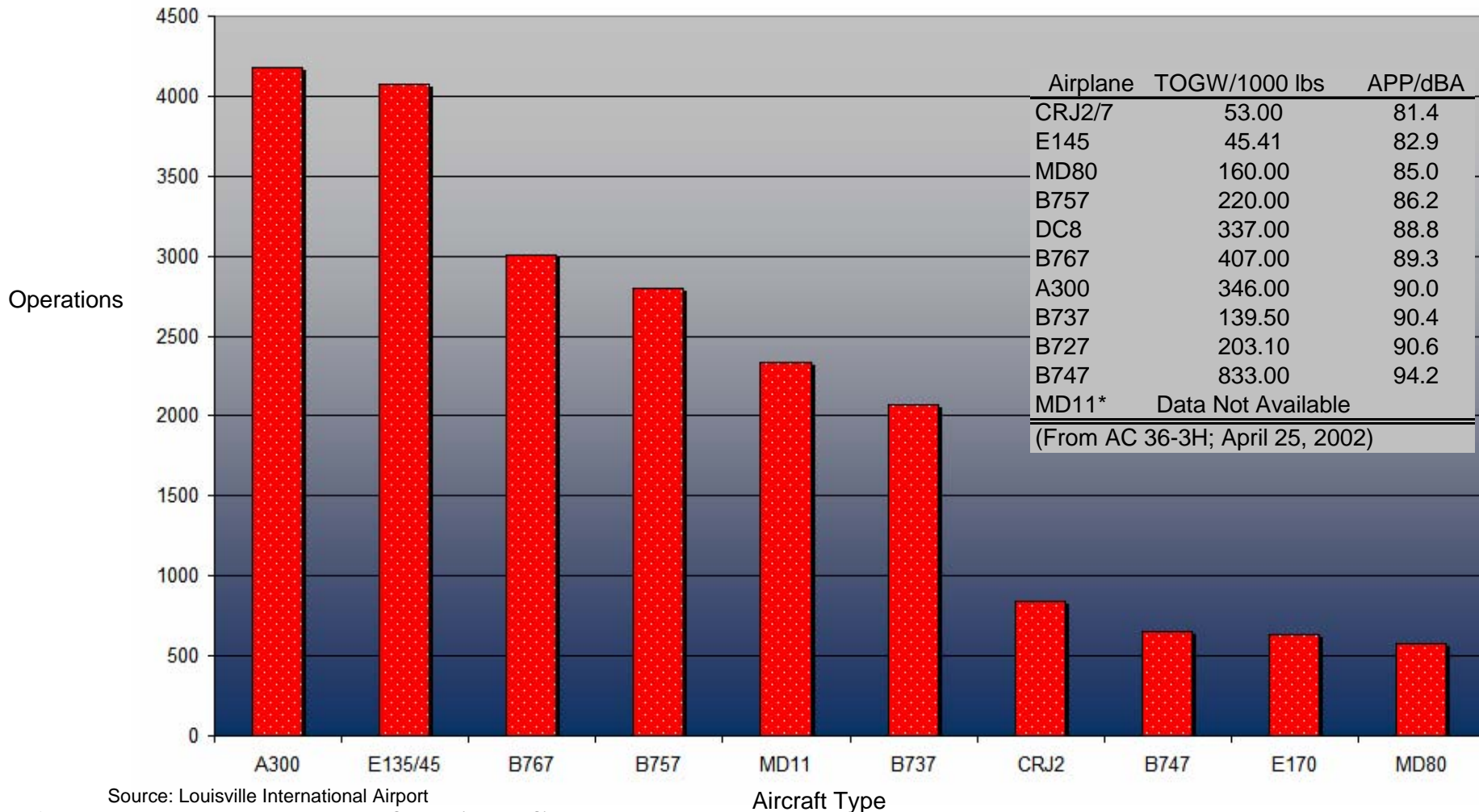
Month	ARRIVALS Percent Compliant				ARR AVG	Departure Percent Compliant				DEP AVG
	17L	17R	35L	35R		17L	17R	35L	35R	
Jan-11	82%	95%	86%	88%	88%	64%	80%	79%	82%	76%
Feb-11	76%	92%	86%	88%	86%	52%	76%	79%	82%	72%
Mar-11	78%	92%	79%	84%	83%	46%	64%	83%	82%	69%
Apr-11	75%	92%	74%	82%	81%	37%	56%	71%	75%	60%
May-11	78%	87%	83%	89%	84%	61%	73%	83%	86%	76%
Jun-11	81%	90%	75%	80%	82%	57%	70%	78%	89%	74%
Jul-11	79%	86%	75%	83%	81%	72%	76%	86%	92%	82%
Aug-11	73%	84%	58%	75%	73%	65%	77%	78%	92%	78%
Sep-11	76%	84%	66%	81%	77%	66%	75%	72%	79%	73%
Oct-11	67%	84%	76%	78%	76%	64%	76%	82%	80%	76%
Nov-11	80%	90%	82%	89%	85%	49%	67%	76%	79%	68%
Dec-11	77%	94%	86%	87%	86%	51%	70%	79%	84%	71%
Jan-12	78%	87%	83%	88%	84%	44%	68%	72%	76%	65%
Feb-12	73%	91%	78%	77%	80%	50%	68%	74%	79%	68%
Mar-12	76%	88%	76%	81%	80%	48%	68%	67%	80%	66%
Apr-12	65%	80%	72%	73%	73%	63%	72%	79%	85%	75%
May-12	71%	86%	75%	77%	77%	67%	80%	78%	87%	78%
Jun-12	61%	81%	71%	73%	72%	63%	75%	78%	90%	77%
Jul-12	66%	83%	70%	76%	74%	62%	72%	77%	89%	75%
Aug-12	68%	85%	75%	77%	76%	63%	71%	83%	90%	77%
Sep-12	79%	93%	81%	78%	83%	53%	72%	72%	88%	71%
Oct-12	80%	92%	85%	82%	85%	70%	59%	70%	89%	72%
Nov-12	73%	73%	82%	85%	78%	84%	82%	84%	92%	86%
Dec-12	84%	93%	89%	91%	89%	74%	85%	72%	79%	78%
<b>24 Month Avg.</b>					<b>80%</b>					<b>73%</b>

Source: Louisville International Airport  
Aircraft Flight Tracking and Noise Management System (AFTNMS)

# Operations by Aircraft Type (SDF) Only Top 10 Aircraft Types Shown

November/December 2012

**Top Ten Aircraft Types by Number of Operations  
November/December 2012**



Source: Louisville International Airport  
Aircraft Flight Tracking and Noise Management System (AFTNMS)