

May 31, 2016

Dear Bowman Field Neighbor:

We want to update you on the work we are doing to comply with the FAA's airspace requirements for Bowman Field.

During this past winter we trimmed 13 trees and removed 107 others that were penetrating, or could be expected to penetrate in the future, the approach surfaces for runways 6 and 33. This work was done on either property with existing aviation easements, on airport-owned property or on a Metro right-of-way. The landscaping work that is a part of that project has begun and this fall, when growing conditions are right, we will plant 185 replacement trees. The final decision to trim or remove the trees, as well as the selection of replacement trees was made by the landowners.

The next step in the Bowman Field Airport Area Safety Program is the publication of the Draft Environmental Assessment (DEA) for public review and comment. The DEA has been prepared to enable the Louisville Regional Airport Authority (LRAA) to acquire aviation easements from property owners, including a private golf course, where trees are penetrating, or are within ten feet of penetrating, the FAA's approach surfaces and to trim or remove and replace those trees. The DEA examines project alternatives and evaluates the environmental consequences of the preferred alternative project.

**The following streets are the ONLY streets where properties have been identified for aviation easement acquisition: Alanmede; Betty; Carson; Drayton; Gardiner; Joan; Kent; Landor; Ribble; Seneca; Valletta; and Wendall. A project Exhibit indicating specific locations of needed easements is included with this letter.**

In addition, LRAA anticipates working with Metro Parks for similar work along Pee Wee Reese and on the Seneca Golf Course.

Copies of the DEA are available for review and comment during normal business hours at the Louisville Public Library, 301 York Street; LRAA Administration Building Front Desk, 700 Administrative Drive, Louisville and on the LRAA website – [www.flylouisville.com](http://www.flylouisville.com). The document will also be available for review at the Program Office in the Bowman Business Center, 2700 Moran Avenue, Suite B each Tuesday from Noon until 7:00 p.m. and each Wednesday 8:00 a.m. until Noon during the month of June, or by appointment. An appointment for review of the document may be made by calling me at (502) 451-0772. Comment sheets and instructions for proper submittal will be available with the documents.

A public information workshop and hearing on the overall project and the DEA will be held Tuesday, June 28, 2016 at the Breckinridge Inn from 5:30 to 7:30 p.m. LRAA staff and our consultant team will be on hand to answer questions and receive comments.

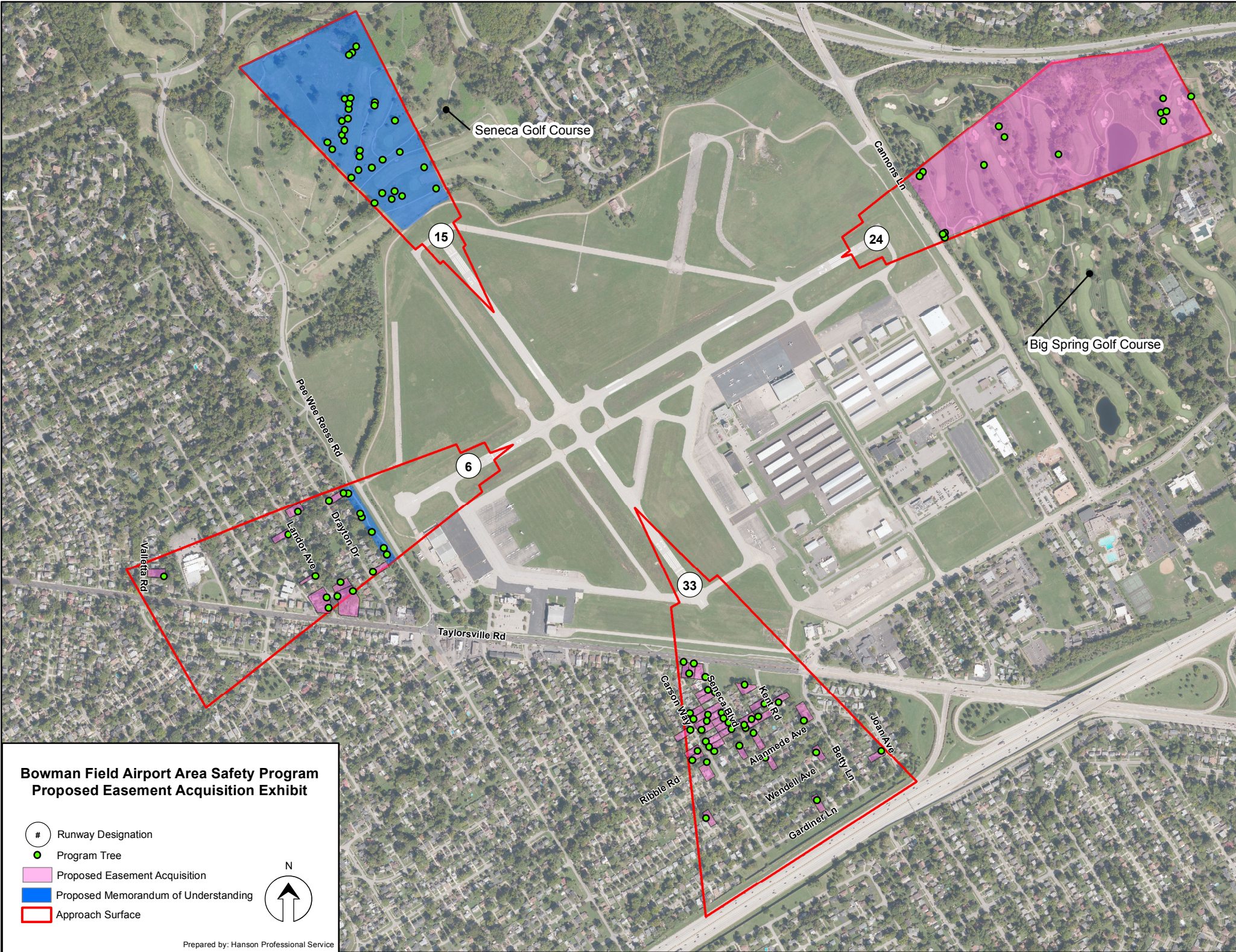
As always, please feel free to call me at (502) 451-0772 or email at [BowmanSafety@Hanson-inc.com](mailto:BowmanSafety@Hanson-inc.com) if you have questions about the program.

Sincerely,



Melissa A. Vasher, PE





# **Bowman Field Airport Area Safety Program Proposed Easement Acquisition Exhibit**

- # Runway Designation
- Program Tree
- Proposed Easement Acquisition
- Proposed Memorandum of Understanding
- Approach Surface

