



**LOUISVILLE  
REGIONAL  
AIRPORT  
AUTHORITY®**

**For more information:**

Trish S. Burke      502-363-8506  
Digital Pager      502-332-2244

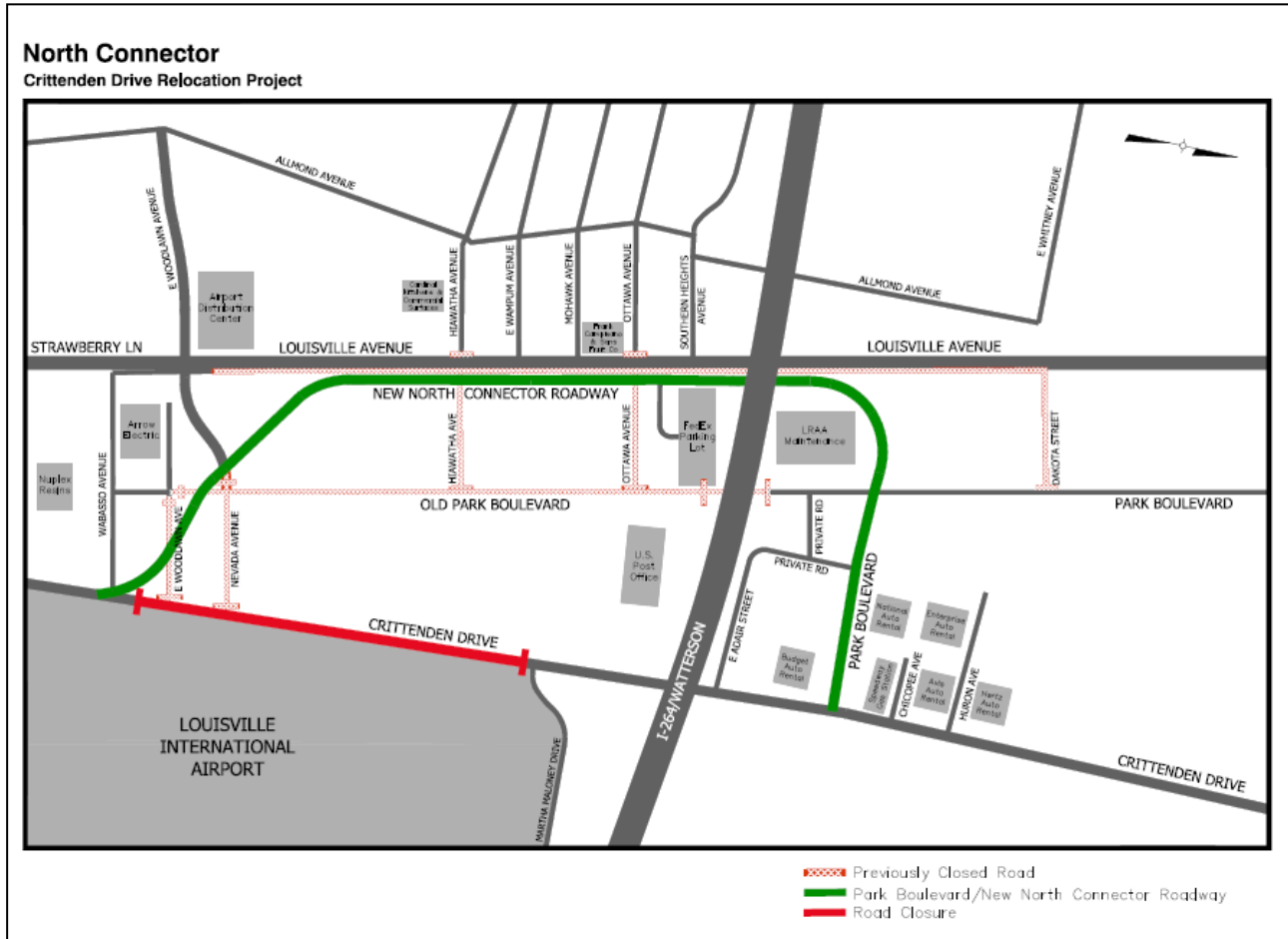
## Media Advisory

### North Connector Phase of Crittenden Drive Relocation Project

**Louisville, KY (August 14, 2013)** – On Thursday, August 22, Crittenden Drive from just south of Martha Maloney Drive to directly north of Wabasso Avenue will be closed as part of the Crittenden Drive Relocation Project. Traffic will be redirected to the newly constructed North Connector roadway via Park Boulevard.

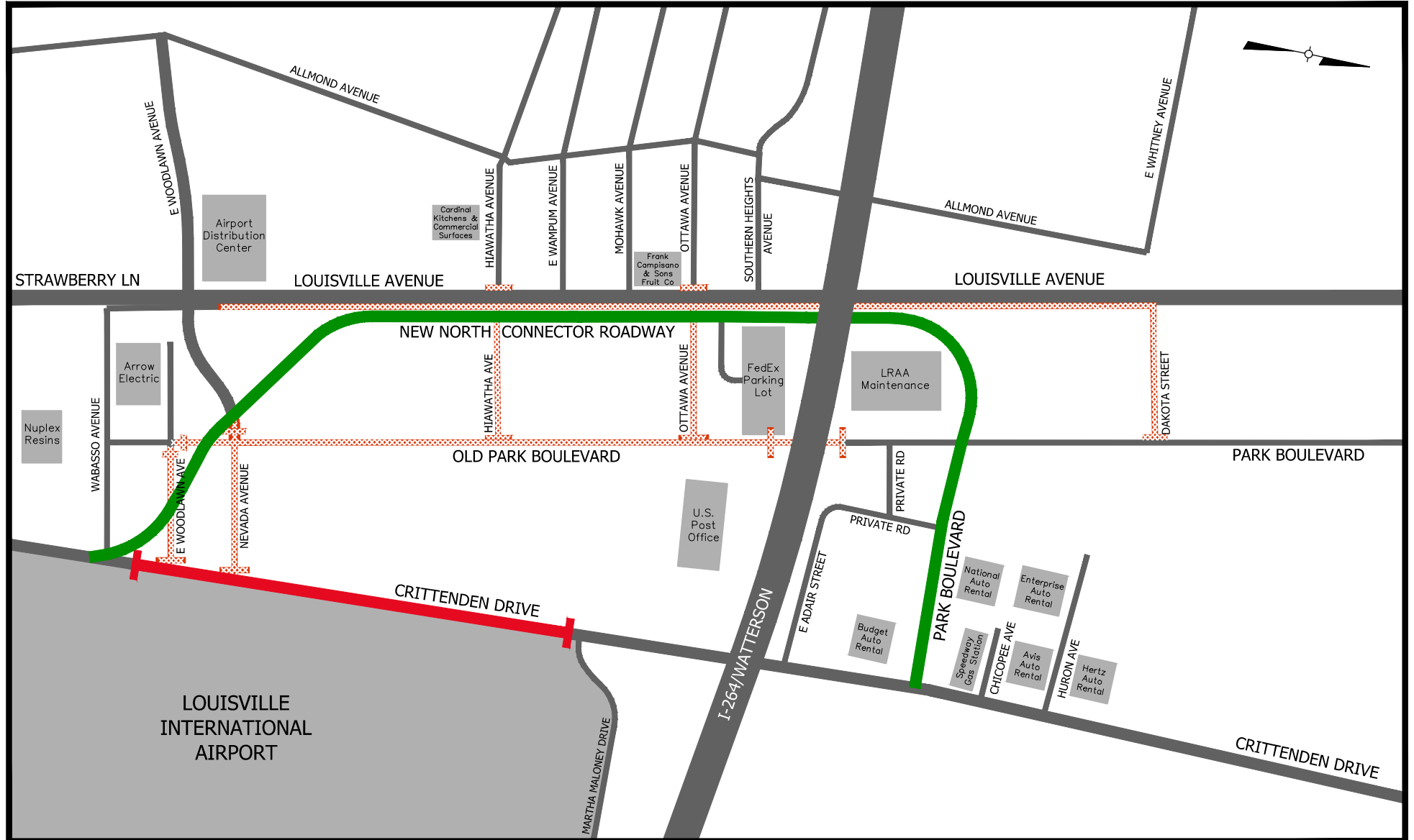
Roadway signs alerting frequent travelers and nearby neighbors of the road closure were posted on Thursday, August 8.

The relocation of the roadway allows for the continued construction of Taxiway “A”, a crucial airfield improvement, which permits the airport to handle the newest, largest long-range commercial aircraft.



# North Connector

## Crittenden Drive Relocation Project



- Previously Closed Road
- Park Boulevard/New North Connector Roadway
- Road Closure