

Community Noise Forum
Monday, November 27, 2017
Agenda

- I. Call to order: 6:00 PM
- II. Minutes of July 24, 2017, and September 28, 2017
- III. Part 150 NCP
 - A. Update: Noise Insulation Program
 - B. Contraflow Exceptions
 - C. NEM Update
- IV. Current Noise Concerns
 - A. Noise Concerns/Complaints
 - B. Runway Utilization
 - C. Construction and Maintenance Activity
- V. Presentation by UPS
- VI. Announcements
- VII. Guest Comments
- VIII. Next Meeting: January 22, 2018
- IX. Adjournment

COMMUNITY NOISE FORUM (CNF)
Monday, July 24, 2017

Members

John Sistarenik, ANA
Bob Slattery, LRAA
Mary Rose Evans, LRAA Board
Brian Sinnwell, LRAA
Tom Foote, Airline Affairs

Verná Goately, Metro
John Greathouse, Southwest (Alt)
Denny Thompson, SE
Mike Zanone, NW

Guests

Clifford & Becky Salmon, Dublin Circle

The meeting was called to order at 6:00 p.m. by John Sistarenik. The meeting notes for March 27th and May 22nd were approved.

Tom Foote gave a short presentation on the 747-8F aircraft to the group. This will be a Group 6 aircraft and the largest aircraft in the UPS fleet. Currently, the largest UPS aircraft is a Group 5 aircraft. UPS ordered 14 new planes with the option to get 14 more. The first aircraft is due the end of September. Initial routings will be to and from Asia leaving out of SDF. This aircraft has a 30% smaller noise footprint and is 16% more fuel efficient than their current 747-400 aircraft. Overall, this will be a cleaner, quieter, and more efficient aircraft.

John noted that in the past, members of the group have expressed interest in possibly taking a tour of the UPS sorting facility. Tom is sure that this is definitely something that can be arranged. If this is something the group would like to do then we need to start thinking about times.

Part 150 NCP:

- A. **Update: University of Louisville:** A total of 24 buildings have been tested. Testing results were received in October 2016. Two of the 24 buildings tested had an overall interior noise level above 45 dB. There are six additional buildings that have rooms that exceed the 45 dB criteria on an individual basis but do not qualify for full treatment of the entire structure. Currently, we are in the environmental/design phase of the project.
- B. **Contraflow Exceptions:** Contraflow for May was 75% for arrivals from the south and 80% for departures to the south. In June, arrivals from south were 74% and departures to the south were 93%. A daily summary for May and June is contained in the handout. The 2 year average (July 2015- June 2017) for contraflow is 73% for arrivals and 78% for departures. A monthly summary going back 8 years is also included in the handout.

- C. **NEM Update:** No updates to report at this time. The ADO was in town recently and this was again brought to their attention. They replied that this was unacceptable and would be looking into it.

Current Noise Concerns:

- A. **Report on Noise Concerns/Complaints:** A total of 7 comments were received in May primarily related to departures to the north. In June, a total of 9 comments were received. Comments and locations are contained in the handout.
- B. **Runway Utilization:** Runway utilization percentages for May and June are contained in the handout. Daily runway utilization and comments from the Air Traffic Control Tower are also included in the handout. Bob noted a slight increase in utilization on runway 17R and believes it attributed to temporary closures of runway 17L for maintenance. We will be keeping an eye on this as we move forward.
- C. **Construction and Maintenance Activity:** Brian Sinnwell reported that there are several ongoing projects such as pavement rehabilitation, terminal apron repair, and airfield electrical. Most of this work is being done during the normal runway closure periods. However, these projects have caused additional closures of the east runway. The pavement project is completed and the electrical project will be complete in approximately 2 weeks. Going forward there will be an additional pavement rehab project on the west runway starting in September and it will take about 9 weekends to finish. Expected completion is early November. Group 6 geometric improvements will also be occurring and may create additional closures on both sides. This project should be completed towards the end of September.

Guest Comments: Mr. Clifford Salmon submitted written comments to the group regarding flights departing to the south and flying over the area of Dublin Circle in Bullitt County. He has lived in the area for approximately 5 years and it seems to be getting worse (See attached notes from Mr. Salmon). It was explained that this area is outside of the DNL 65 contour and that any changes to departure procedures would need to be implemented by the FAA. Typically, the FAA would be very concerned about potentially moving noise from one area to another.

Announcements: None.

Next Meeting: Monday, September 25, 2017 at 6 p.m.

Adjournment: A motion was made to adjourn the meeting at 7:09 p.m.

24, July 2017

Noise from departing Flights in the Zoneton Area

Departing flights from SDF RWY 17L or 17R.

The departing flights from Stanford International Airport now cross an area that has grown tremendously in the last few years, and the population continues to increase. The noise from the departures while not deafening can be very annoying during the early morning hours. Once you are up for any reason during the high departure period it can be very distracting trying to get back to sleep.

The Problem

From runway 17L or 17R after take off and during climb out the problem occurs during a left turn to intercept their departure heading.

The solution

From the hours between 11:00 pm and 6:00 am, after take off if flights could delay their left turn for 1 minute. At an estimated speed of 180 knots they would travel approximately 3 or 4 miles on the departure heading of 170. And then turn left to intercept their heading. This extra 1 minute would put the aircraft in the approximate area called Gap in Knob. North of Shepherdsville and well north of the Fort Knox Restricted air space. This areas population is very sparse compared to area they are flying over now. And the aircraft will have gained altitude further decreasing engine noise for that area.

This change in the departure flight pattern I believe will help tremendously now. Thereby reducing complaints in the future, as this area continues to grow. Being proactive and keeping ahead of the game on this will reduce problems in the future as they will already be solved. Thank you for your help.

Clifford Salmon
148 Dublin Circle
Louisville, KY. 40229-3473 (Bullitt county)
502-599-7080
kycliff@aol.com
Airman certificate #3444816

COMMUNITY NOISE FORUM (CNF)
Monday, September 25, 2017

Members

John Sistarenik, ANA
Bob Slattery, LRAA
Mary Rose Evans, LRAA Board
Tom Foote, Airline Affairs

Ken Dietz, U of L
John Greathouse, Southwest (Alt)
Denny Thompson, SE

Guests

Jeff Donohue, State Representative Fairdale
Walter Graham, Fairdale

The meeting was called to order at 6:00 p.m. by John Sistarenik. A quorum was not present and the CNF operated as a committee of the whole. Any decisions made will need to be confirmed at the November meeting. The July meeting notes were reviewed and will be approved at the November meeting.

Tom Foote was able to arrange for the CNF to take a tour of the UPS Worldport Facility on October 6th. We will tour the hangar where the new 747-8F aircraft will be on display. After viewing the aircraft we will tour the facility.

Part 150 NCP:

- A. Update: University of Louisville:** A total of 24 buildings have been tested. Testing results were received in October 2016. Two of the 24 buildings tested had an overall interior noise level above 45 dB. There are six additional buildings that have rooms that exceed the 45 dB criteria on an individual basis but do not qualify for full treatment of the entire structure. Currently, we are in the environmental/design phase of the project. The draft EA has been submitted to the FAA for review.
- B. Contraflow Exceptions:** Contraflow for July was 85% **for arrivals** from the south and 85% **for departures** to the south. In August, **arrivals** from south were 79% and **departures** to the south were 90%. A daily summary for July and August is contained in the handout. The 2 year average (September 2015- August 2017) for contraflow is 74% for arrivals and 78% for departures. A monthly summary going back 8 years is also included in the handout.
- C. NEM Update:** No updates to report at this time. The ADO informed us at the end of July that we should hear something shortly, but still no word.

Current Noise Concerns:

- A. Report on Noise Concerns/Complaints:** A total of 14 comments were received in July. A cluster of comments were in the southwest quadrant relating to departures to the south. In August, a total of 9 comments were received. Comments and locations are contained in the handout.
- B. Runway Utilization:** Runway utilization percentages for July and August are contained in the handout. Daily runway utilization and comments from the Air Traffic Control Tower are also included in the handout. Mary Rose asked that since the peak months for operations are November and December, will the average go above what is projected for 2016? Bob responded that it would depend on the number of operations for September and October but it was possible and we are keeping an eye on this and the utilization rates for the west runway.
- C. Construction and Maintenance Activity:** Bob Slattery reported for Brian Sinnwell on the airfield construction. Pavement rehabilitation has approximately 3 weeks to go on Taxiway "B", however, the project may be done sooner. This may cause a temporary increase in the instances of north flow for departures. Also, there will be closures of the West runway on weekends from now through approximately November 20th.

Guest Comments: State Representative Jeff Donohue (District 37) introduced himself and Mr. Bill Graham. They both live in the area of the Jefferson Memorial Forrest and have noticed an increase in flights and noise. Representative Donohue said that at one time there was an agreement that the aircraft would fly out so far before they turned. He feels that for some reason it appears that the aircraft are not doing this anymore. With the Louisville Loop, camp grounds in the Memorial Forrest and other investment that is happening in the area something needs to be done to address the increasing impact of aircraft noise in the area. They attended the meeting in order to gather information and seek help from the group in order to address the noise issues in the area. Mr. Bill Graham introduced himself and said the state is currently investing millions of dollars for development in the area and he would like to work with the group and find a way to get the aircraft higher in order to help reduce the noise impact. He stated that Metro Government has also invested in youth training programs in the area and when the jets come flying over the tree tops it takes away from the natural experience. He thinks that we can do better than that and is here to ask the group to see if there is a way to get the planes higher. He also stated that it would not be right to just move the aircraft over to someone else and would like help from the group to see if there may be another alternative. Ken Dietz asked for clarification on whether the planes are moving off their heading too quickly or not soon enough. Representative Donohue said that it would be beneficial if the aircraft went further south like they used to however, he is aware of possible restrictions if the aircraft go further south and they are looking at all possible alternatives. Tom Foote said that although he is not specifically aware of what can and cannot be done from a flight standpoint he has taken notes and will look into getting some input on how much flexibility there is regarding departure procedures. Mr. Graham said that he is not aware of all that could be done and is looking for assistance from the

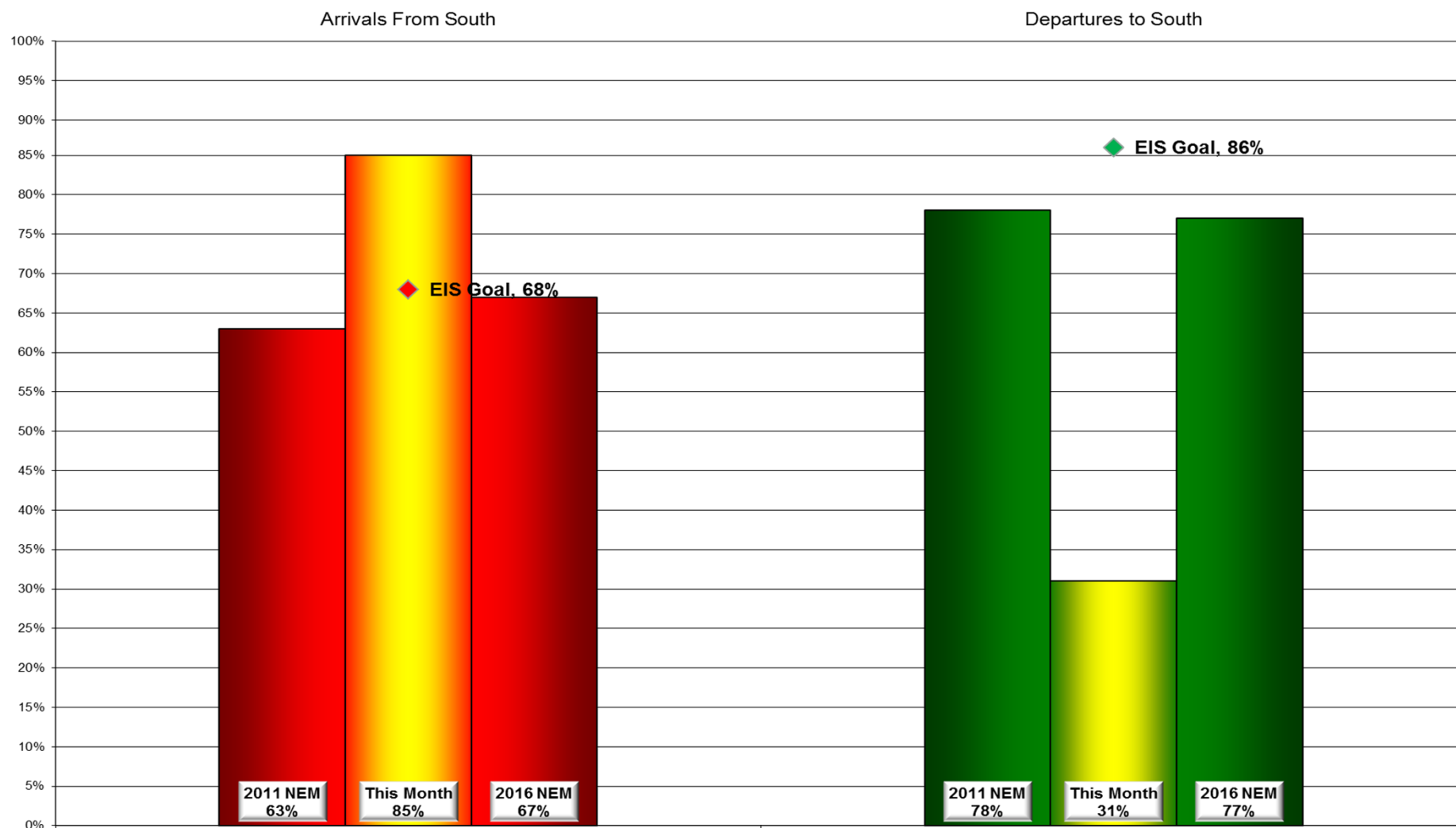
group. Mr. Graham thanked the group for their time and said he would see them at the November 27th meeting.

Announcements: None.

Next Meeting: Monday, November 27, 2017 at 6 p.m.

Adjournment: A motion was made to adjourn the meeting at 7:17 p.m.

Monthly Contraflow September 1-29, 2017



Daily Runway Use Summary – September 2017

(from 10:00 PM date list in first column to 7:00 AM the following morning)

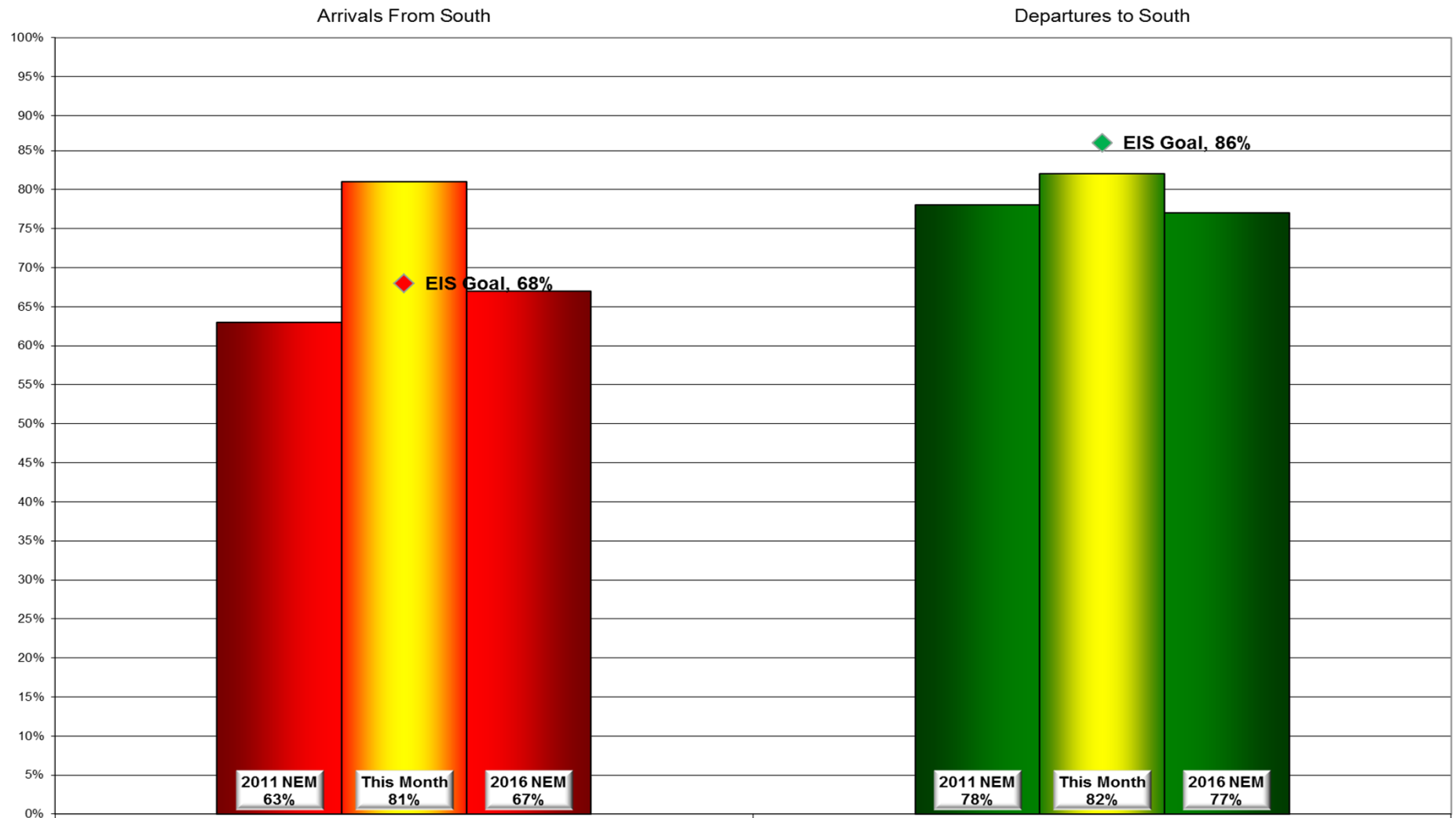
		% of all arrivals from the south										% of all departures to the south									
Date	Day	* in compliance	Runway #						Unknown Runway	Use	Notes / Comments	** in compliance	Runway #						Unknown Runway	Use	Notes / Comments
			11	17L	17R	29	35L	35R					11	17L	17R	29	35L	35R			
09/01/17	Fri	100%						64	36	0		0%						45	55	0	350@10-14knts,G19,RA
09/02/17	Sat																				
09/03/17	Sun																				
09/04/17	Mon	0%			49	51				0	190-210@9-13knts,G22	89%			32	57		2	9	0	
09/05/17	Tue	97%			2	1		58	39	0		94%			34	60		3	3	0	
09/06/17	Wed	98%			1	1		60	38	0		86%			30	56		6	8	0	
09/07/17	Thu	96%			3	1		59	37	0		85%			35	50		8	7	0	
09/08/17	Fri	96%			2	2		61	35	0		93%			41	52		2	5	0	
09/09/17	Sat																				
09/10/17	Sun																				
09/11/17	Mon	100%						61	39	0		0%						57	43	0	020-060@6-12knts,G18,RA
09/12/17	Tue	0%			43	57				0	110-280@3-5knts,RA	100%			52	48				0	
09/13/17	Wed	0%			45	55				0	150-170@5-6knts, RA	96%			52	44		1	3	0	
09/14/17	Thu	100%						61	39	0		0%						55	45	0	100-150@3-4knts
09/15/17	Fri	100%						60	40	0		1%			1			60	39	0	120-140@3-4knts
09/16/17	Sat																				
09/17/17	Sun																				
09/18/17	Mon	97%			2	1		58	39	0		0%						60	40	0	100-150@3-5knts
09/19/17	Tue	100%						62	38	0		0%						58	42	0	120-150@3-6knts
09/20/17	Wed	99%			1			55	44	0		7%			2	5		58	35	0	100-120@3-4knts
09/21/17	Thu	100%						65	35	0		2%			2			59	39	0	090-120@3knts
09/22/17	Fri	99%				1		63	36	0		2%			2			54	44	0	340-140@3knts
09/23/17	Sat																				
09/24/17	Sun																				
09/25/17	Mon	100%						61	39	0		0%						58	42	0	100-120@3knts
09/26/17	Tue	100%						60	40	0		2%			2			58	40	0	130@4-5knts
09/27/17	Wed	99%					1	59	40	0		0%						58	42	0	360-010@9-12knts
09/28/17	Thu	100%						62	38	0		0%						56	44	0	360-010@3-6knts
09/29/17	Fri	100%						62	38	0		0%						60	40	0	360-010@6-7knts

Preferred Flow

DATIS Reported Conditions Indicate
Support for Non-Preferred Flow

DATIS Reported Conditions Do Not Indicate
Support for Non-Preferred Flow

Monthly Contraflow October 1-31, 2017



Daily Runway Use Summary – October 2017

(from 10:00 PM date list in first column to 7:00 AM the following morning)

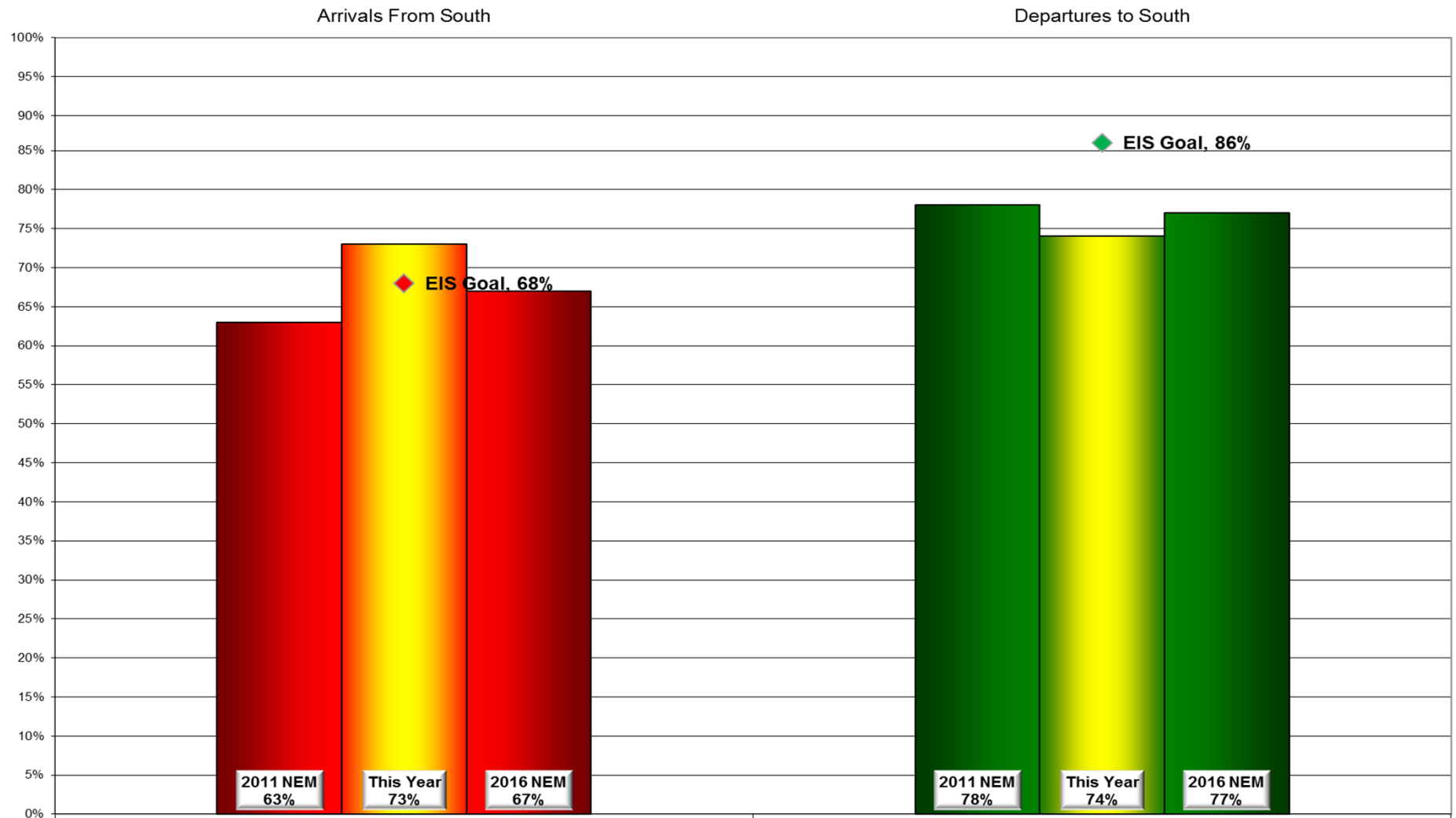
		% of all arrivals from the south										% of all departures to the south									
Date	Day	* in compliance	Runway #						Unknown Runway	Use	Notes / Comments	** in compliance	Runway #						Unknown Runway	Use	Notes / Comments
			11	17L	17R	29	35L	35R					11	17L	17R	29	35L	35R			
10/02/17	Mon	100%						67	33	0		0%						61	39	0	120-140@4-6knts
10/03/17	Tue	99%			1			57	42	0		5%			4	1		58	37	0	120-140@3-6knts
10/04/17	Wed	100%						62	38	0		5%			4	1		56	39	0	100-140@3-4knts
10/05/17	Thu	93%			6	1		53	40	0		93%			40	53		3	4	0	
10/06/17	Fri	0%			41	59				0	140-150@6-8knts	100%			35	65				0	
10/07/17	Sat																				
10/08/17	Sun																				
10/09/17	Mon	95%			4	1		58	37	0		93%			37	56		4	3	0	
10/10/17	Tue	0%			49	51				0	120-150@3-8knts,G18,RA	100%			34	66				0	
10/11/17	Wed	94%			6			58	36	0		94%			38	56		1	5	0	
10/12/17	Thu	95%			3	2		58	37	0		93%			36	57		2	5	0	
10/13/17	Fri	91%			6	3		57	34	0		95%			45	50		3	2	0	
10/14/17	Sat																				
10/15/17	Sun																				
10/16/17	Mon	98%			1	1		60	38	0		93%			37	56		3	4	0	
10/17/17	Tue	94%			5	1		60	34	0		87%			30	57		7	6	0	
10/18/17	Wed	95%			4	1		60	35	0		94%			42	52		2	4	0	
10/19/17	Thu	93%			6	1		60	33	0		93%			33	60		4	3	0	
10/20/17	Fri	87%			11	2		59	28	0		95%			39	56		2	3	0	
10/21/17	Sat																				
10/22/17	Sun																				
10/23/17	Mon	77%			11	12		42	35	0		97%			36	61		2	1	0	
10/24/17	Tue	95%			3	2		57	38	0		91%			35	56		1	8	0	
10/25/17	Wed	91%			8	1		58	33	0		93%			35	58		4	3	0	
10/26/17	Thu	0%			43	56	1			0	120-140@5-8knts	100%			40	60				0	
10/27/17	Fri	92%			5	3		59	33	0		90%			39	51		2	8	0	
10/28/17	Sat																				
10/29/17	Sun																				
10/30/17	Mon	96%			3	1		60	36	0		91%			36	55		7	2	0	
10/31/17	Tue	94%			5	1		52	42	0		95%			38	57		2	3	0	

Preferred Flow

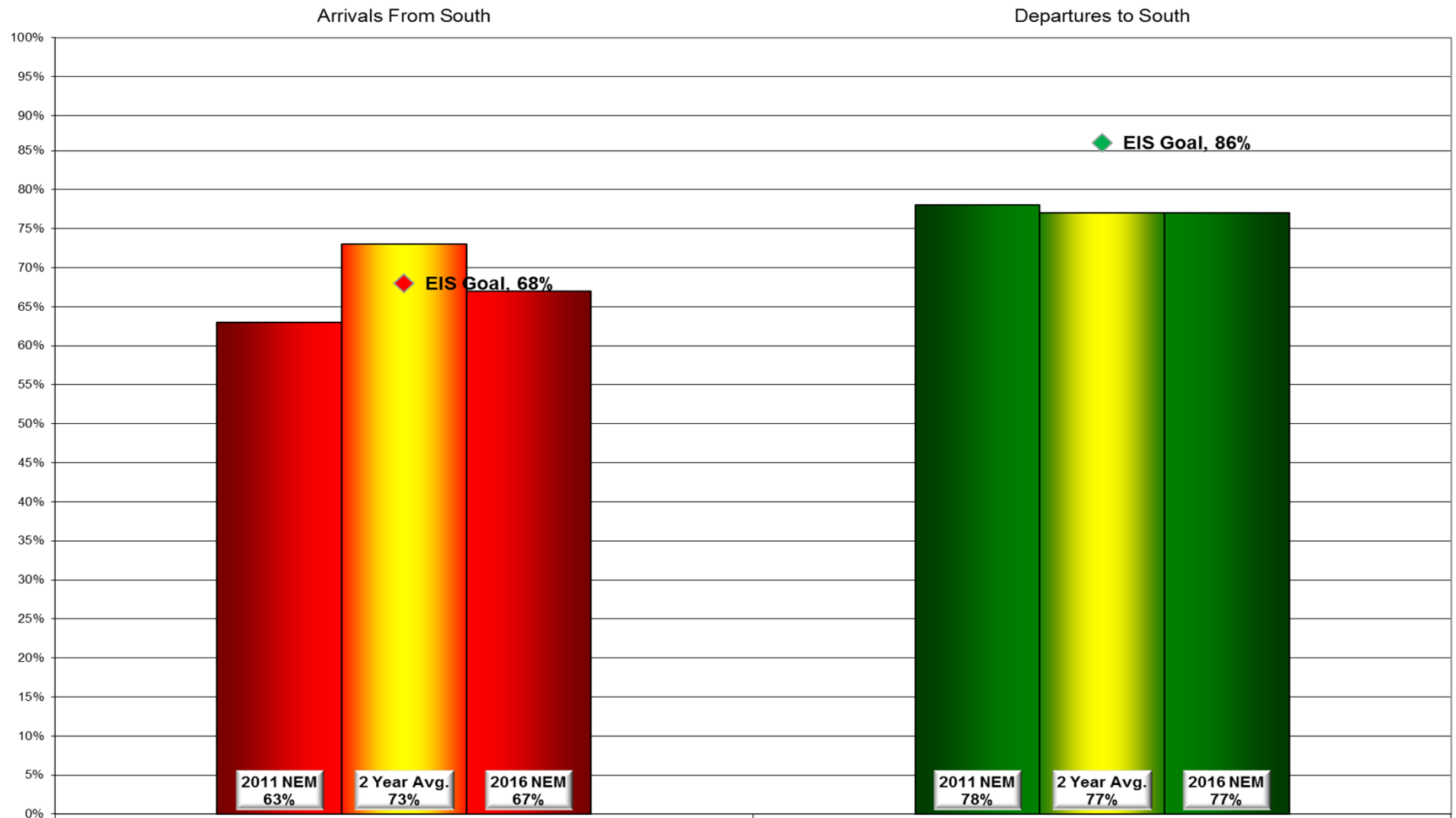
DATIS Reported Conditions Indicate
Support for Non-Preferred Flow

DATIS Reported Conditions Do Not Indicate
Support for Non-Preferred Flow

Contraflow This Year As of November 3, 2017



Contraflow 2 Year Average November 2015 - October 2017



Year-to-Year by Month Percent* Contraflow

Arrivals From the South (Goal 68%)										Departures to the South (Goal 86%)									
	2010	2011	2012	2013	2014	2015	2016	2017	Avg		2010	2011	2012	2013	2014	2015	2016	2017	Avg
Jan	94%	91%	62%	72%	51%	76%	69%	65%	73%	Jan	54%	71%	80%	65%	81%	76%	69%	61%	70%
Feb	90%	73%	69%	77%	72%	66%	80%	58%	73%	Feb	71%	63%	74%	78%	71%	76%	67%	77%	72%
Mar	80%	52%	61%	87%	60%	71%	63%	79%	69%	Mar	82%	72%	96%	77%	77%	66%	77%	62%	76%
Apr	57%	47%	78%	60%	67%	53%	86%	56%	63%	Apr	84%	83%	76%	89%	83%	77%	73%	80%	81%
May	56%	69%	72%	46%	60%	75%	62%	75%	64%	May	87%	85%	81%	85%	92%	80%	80%	80%	84%
Jun	66%	61%	79%	76%	75%	57%	79%	74%	71%	Jun	96%	93%	87%	80%	91%	91%	83%	93%	89%
Jul	61%	91%	62%	74%	79%	74%	59%	85%	73%	Jul	90%	88%	92%	88%	85%	80%	91%	85%	87%
Aug	59%	82%	49%	84%	61%	86%	76%	79%	72%	Aug	92%	91%	91%	92%	92%	91%	90%	90%	91%
Sep	70%	85%	55%	86%	85%	95%	88%	85%	81%	Sep	73%	64%	92%	87%	86%	73%	93%	31%	75%
Oct	80%	88%	62%	87%	75%	86%	81%	81%	80%	Oct	78%	63%	78%	89%	79%	74%	81%	82%	78%
Nov	85%	55%	84%	73%	78%	59%	74%		73%	Nov	77%	72%	81%	83%	62%	88%	77%		77%
Dec	67%	70%	64%	58%	78%	55%	75%		67%	Dec	78%	65%	67%	71%	68%	79%	62%		69%
Avg	72%	72%	66%	73%	70%	71%	74%	74%		Avg	80%	76%	83%	82%	81%	79%	79%	74%	

*Number is percentage of all operations between 10:00 PM - 7:00 AM

NOISE COMMENT REPORT



September 2017

Comments (SDF/LOU)

September 2017

Street	Zip Code	Time Received	Time	Airport	Disturbance Type	CNF Quad	Status	Operation or Comment Type ¹	Deviation Type ²	Comments
S Shelby St	40217	2017-09-04 20:02:00	2017-09-04 20:02:00	SDF	Other	NE	Investigated	Standard	None	I own a home in Schnitzelburg and have heard about possible noise abatement home improvements being available. I tried searching for a map of covered areas, but had no luck. Could you please direct me to such a resource?
Delor Ave	40217	2017-09-04 20:02:00	2017-09-04 20:02:00	SDF	Other	NE	Investigated	Standard	None	I own a home in George Rogers Clark and have heard about possible noise abatement home improvements being available. I tried searching for a map of covered areas, but had no luck. Could you please direct me to such a resource?

1. **Standard:** Indicates the “Most Preferred” runway configuration was being utilized at the time of the comment.
Non Standard: Indicates that a “Lesser Preferred” runway configuration was being utilized at the time of the comment.
QHP: QuieterHome Program

2. This column is used to indicate the conditions which most likely necessitated a deviation from the standard procedures.

Comments (SDF/LOU)

September 2017

Street	Zip Code	Time Received	Time	Airport	Disturbance Type	CNF Quad	Status	Operation or Comment Type ¹	Deviation Type ²	Comments
Budd Rd	47150	2017-09-12 17:38:00	2017-09-12 15:30:00	SDF	Too Much Noise	SI	Investigated	Non-Standard	None	My name is Phil, I understand that you are the noise officer. I have placed 3 complaints over the last several months and have not got any response back. I sent one out in March and then a couple of months later and then a couple of months later. They are referring to the western side of New Albany. About 90% of the noise is UPS planes. They start at 3:30 p.m. and go one after the other over, over, and over, right over top of our house. There are about 50 houses in this region that live in a cup sort of atmosphere so the sound is I'm sure way over the decibel level. My background is jet engine technician and I am run certified, so I know about these matters. So I am wondering why no one has contacted me, and I wish they would so we could discuss what we can do about this. They also go in the middle of the morning let's say during quiet hours supposedly, and they go one after the other only a minute or two apart all night long. They are also a safety hazard because I have had some come in so low that I have actually heard the flaps disconnecting from the lock position and moving out. I am seeing that they are no more than 200 or 300 feet above the ground. So if you would give me a call I would appreciate it.
Maritime Rd	47130	2017-09-15 14:46:00	2017-09-12 17:00:00	SDF	Other	SI	Investigated	Non-Standard	Weather	It looks like something came through our roof. Here is a snapshot of the fragment. It was discovered inside a vacant port building located on Maritime Road. Our best guess is that it came through the roof between 5:00 p.m. Tuesday and 7:00 a.m. Wednesday.

1. **Standard:** Indicates the "Most Preferred" runway configuration was being utilized at the time of the comment.
Non Standard: Indicates that a "Lesser Preferred" runway configuration was being utilized at the time of the comment.
QHP: QuieterHome Program

2. This column is used to indicate the conditions which most likely necessitated a deviation from the standard procedures.

Comments (SDF/LOU)

September 2017

Street	Zip Code	Time Received	Time	Airport	Disturbance Type	CNF Quad	Status	Operation or Comment Type ¹	Deviation Type ²	Comments
Parkway DR	40217	2017-09-14 17:13:00	2017-09-14 17:13:00	SDF	Noise At Wrong Time	NE	Investigated	Non-Standard	None	I live on Parkway Drive and these planes are taking off over our home, what happened to them taking off south? You all have destroyed a lot of neighborhoods with the noise. The airport should be paying for our taxes. I moved here in 1975 and no airplanes flew over our home.
Budd Rd	47150	2017-09-16 13:07:00	2017-09-16 04:30:00	SDF	Noise At Wrong Time	SI	Investigated	Non-Standard	None	I spoke to you the other day about the UPS flight noise problem. The very next day there were at least 60 or 70 at quiet hours that were directly over top of my house. I hope that was a coincidence but they went all night long. Now it is Saturday morning and they have never done this before this often but they started at 4:45 a.m. and went until the flights are actually supposed to start. Something has to be done. I think my next move is to go to the regional FAA, send them an email and see at least if there can be some splitting up of it. The percentages that you need to look at are the UPS flights going north. Not the whole picture, just how many flights are actually coming over. I just thought I would call and try and get ahold of you and see what your thought was and if anything could be done. I think my next step is the FAA or my local councilman.
Parkway DR	40217	2017-09-19 11:35:00	2017-09-19 11:35:00	SDF	Other	NE	Investigated	Standard	None	I called several years ago and complained about the noise and was told that I might be eligible for the program where they put windows and doors in your home. The noise is worse now than it ever was. I want to know why I was never called back about the program.

1. **Standard:** Indicates the “Most Preferred” runway configuration was being utilized at the time of the comment.
Non Standard: Indicates that a “Lesser Preferred” runway configuration was being utilized at the time of the comment.
QHP: QuieterHome Program

2. This column is used to indicate the conditions which most likely necessitated a deviation from the standard procedures.

Comments (SDF/LOU)

September 2017

Street	Zip Code	Time Received	Time	Airport	Disturbance Type	CNF Quad	Status	Operation or Comment Type ¹	Deviation Type ²	Comments
Winnland Dr	40219	2017-09-19 21:36:00	2017-09-19 21:23:00	SDF	Aircraft Too Low	SE	Investigated	Non-Standard	None	On September 19th at 9:23 p.m., the sound from the plane above our home had us truly scared that it was landing on top of us. This is how close and loud the plane was. On the previous night, the 18th, the same occurred with 2 planes one after another. This was also in the evening hours. I have not noticed this previously and find myself fearful and concerned. It seems that the noise and proximity that the planes fly only gets greater. I live in the Briarcliff neighborhood located behind Texas Roadhouse on Outer Loop. My childhood home was taken from Minors Lane Heights after I had purchased this home to be close to my parents. Does the Airport Authority have any intentions in regards to this neighborhood as well? We already fear living in the flood zone, and now fear a plane will find itself on top of us. Thanks for your attention.
Vine St	40204	2017-09-20 08:47:00	2017-09-20 08:47:00	SDF	Aircraft Off Course	NE	Investigated	Non-Standard	Ops	Why are multiple planes flying right over my house? There's no bad weather. It's not even Christmas yet for high volume. Please stay on the other side of I-65.
Delor AV	40217	2017-09-21 20:11:00	2017-09-21 05:10:00	SDF	Vibrations	NE	Investigated	Non-Standard	None	On September 21 at 5:10 a.m. I was awakened by an extremely loud jet taking off the NE runway, over my house in Schnitzelburg. It rattled my house so bad; I'm surprised nothing crashed to the floor. I hate to say it, but that 65db DNL needs to go another block or 2.

1. **Standard:** Indicates the “Most Preferred” runway configuration was being utilized at the time of the comment.
Non Standard: Indicates that a “Lesser Preferred” runway configuration was being utilized at the time of the comment.
QHP: QuieterHome Program

2. This column is used to indicate the conditions which most likely necessitated a deviation from the standard procedures.

Comments (SDF/LOU)

September 2017

Street	Zip Code	Time Received	Time	Airport	Disturbance Type	CNF Quad	Status	Operation or Comment Type ¹	Deviation Type ²	Comments
Audubon Pkwy	40213	2017-09-26 09:43:00	2017-09-26 09:43:00	SDF	Noise At Wrong Time	NE	Investigated	Non-Standard	Ops	I live in the Audubon Park area pretty much in the direct path of the easternmost runway. In the last few weeks, there has been a significant increase in planes, specifically UPS planes, departing to the north between 4-6 a.m. - actually pretty much all day. In the few years I've lived in the area, it seems like it's been extremely rare for northern departures in the early morning hours. With the frequency it has occurred the last few weeks, I'm thinking there's either been a change in procedures or there's some kind of temporary change (runway construction perhaps). It can't be because of the wind either because we would get departures all day and then minutes later, arrivals. Can you please let me know if this is standard procedure now or something temporary? If temporary, can you fill me in on what is going on?
Mckinley AV	40217	2017-09-27 06:30:00	2017-09-27 06:30:00	SDF	Noise At Wrong Time	NE	Investigated	Non-Standard	None	The noise of UPS flights in the morning especially between 4 a.m. and 5 a.m. is very loud and wakes us up many mornings. Questions, 1. I can see the airplanes out my window and they are very close. Has something changed that we are experiencing a high volume of noise? 2. Is this a temporary problem or a permanent? 3. If permanent Is there any help we could receive for noise reduction of our home.

1. **Standard:** Indicates the "Most Preferred" runway configuration was being utilized at the time of the comment.
Non Standard: Indicates that a "Lesser Preferred" runway configuration was being utilized at the time of the comment.
QHP: QuieterHome Program

2. This column is used to indicate the conditions which most likely necessitated a deviation from the standard procedures.

Comments (SDF/LOU)

September 2017

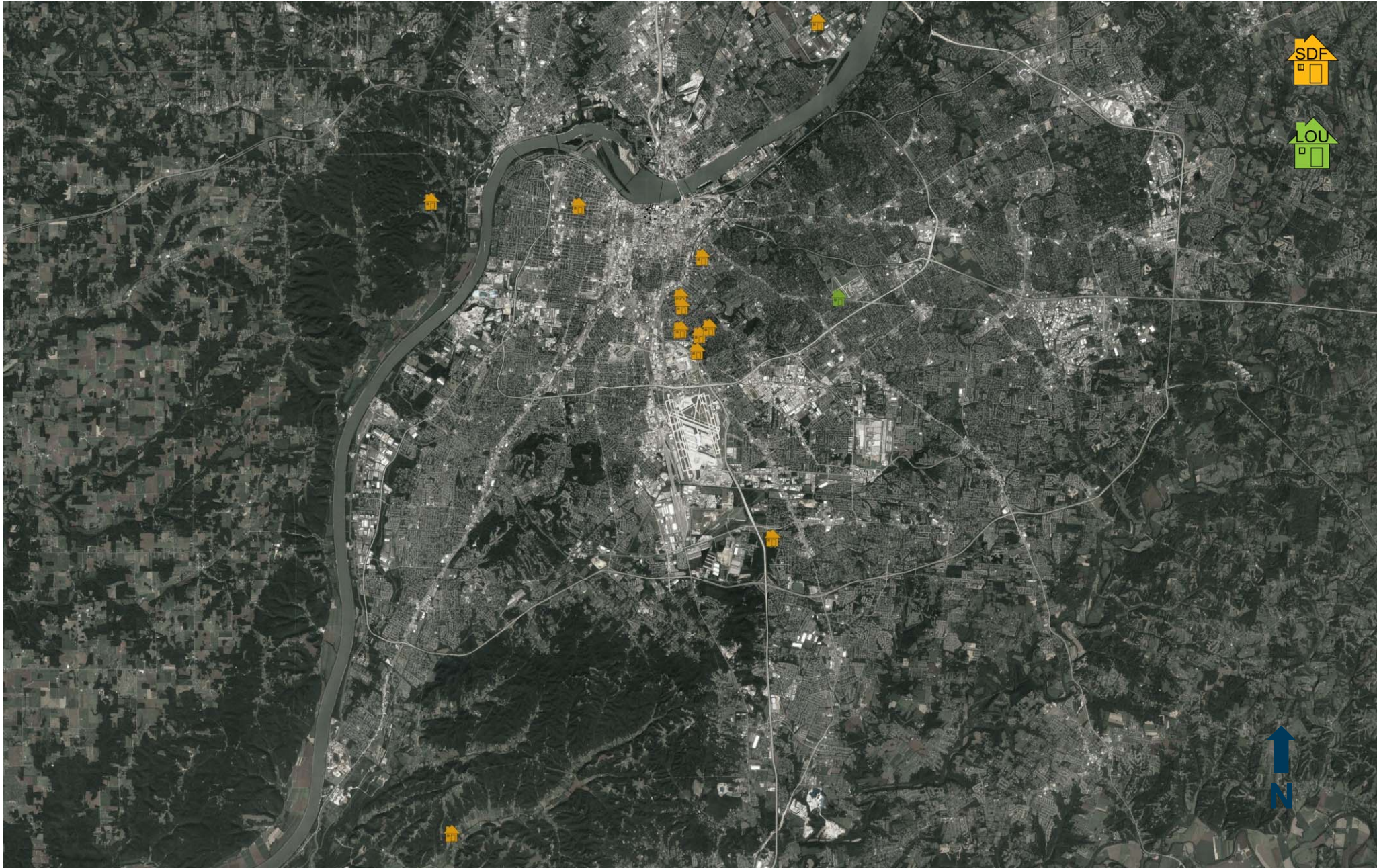
Street	Zip Code	Time Received	Time	Airport	Disturbance Type	CNF Quad	Status	Operation or Comment Type ¹	Deviation Type ²	Comments
Taylorsville Rd	40205	2017-09-28 11:46:00	2017-09-28 11:46:00	LOU	Constant Noise	NE	Investigated	Standard	None	In the months following the tree removal, I've noticed that aircraft noise has risen to an unacceptable level. Aircraft seem to approach the airport at a lower altitude and at greater speed. Increased flight activity compounds this problem. This is interfering with the peaceful enjoyment of our property. How do you propose to remedy this issue?
Knob Creek Rd	40165	2017-09-29 07:36:00	2017-09-29 01:00:00	SDF	Noise At Wrong Time	SW	Investigated	Standard	None	I had written a letter, dated July 27, 2017 regarding the almost nightly onslaught of airliner noise. I have to say it's been pretty respectful lately until early this am. I actually thought, maybe my concern was taken seriously until this a.m. Beginning at approximately 1:00 a.m. there were at least 12 planes that flew over Shepherdsville. One right after the other. At least 4 of those planes flew so low that it awakened some dogs in the neighborhood who decided then to sound off for over an hour. #1- Again, why is it necessary to fly out between midnight and 0500? #2- why is it necessary to fly one right after another in the same general direction. Why can't they be spread further apart time wise and sent in different directions? This is very disruptive.
S 25th St	40212	2017-09-29 05:13:00	2017-09-29 05:13:00	SDF	Too Much Noise	NW	Investigated	Non-Standard	None	I was wanting some information on how to file a complaint. I live on S. 25th Street. All night long the airplanes are flying over and you can't get any sleep around here.
							Received	LRAA	15	

1. **Standard:** Indicates the "Most Preferred" runway configuration was being utilized at the time of the comment.
Non Standard: Indicates that a "Lesser Preferred" runway configuration was being utilized at the time of the comment.
QHP: QuieterHome Program

2. This column is used to indicate the conditions which most likely necessitated a deviation from the standard procedures.

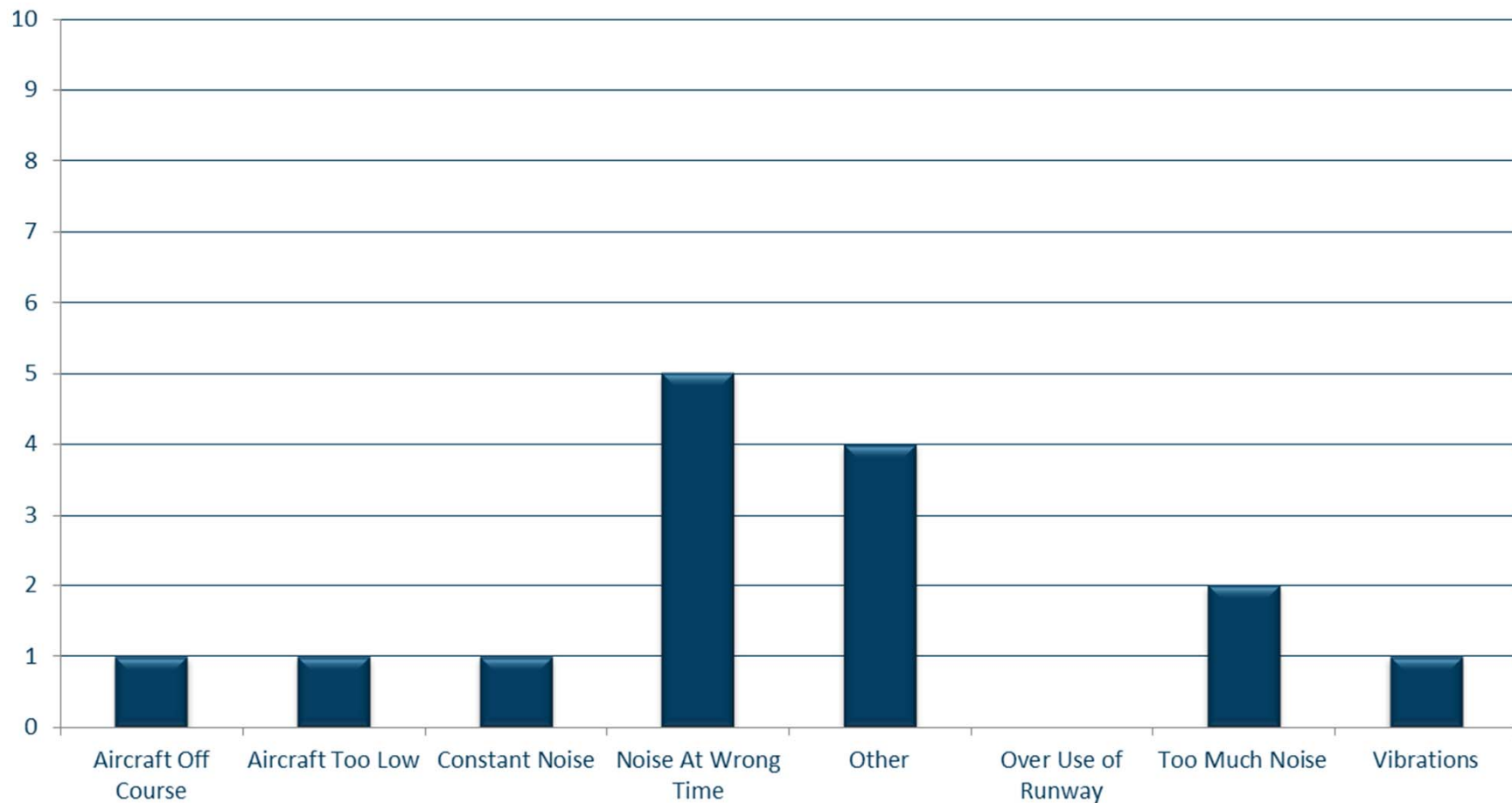
Comment Location (SDF/LOU)

September 2017



Comment Type (SDF and LOU)

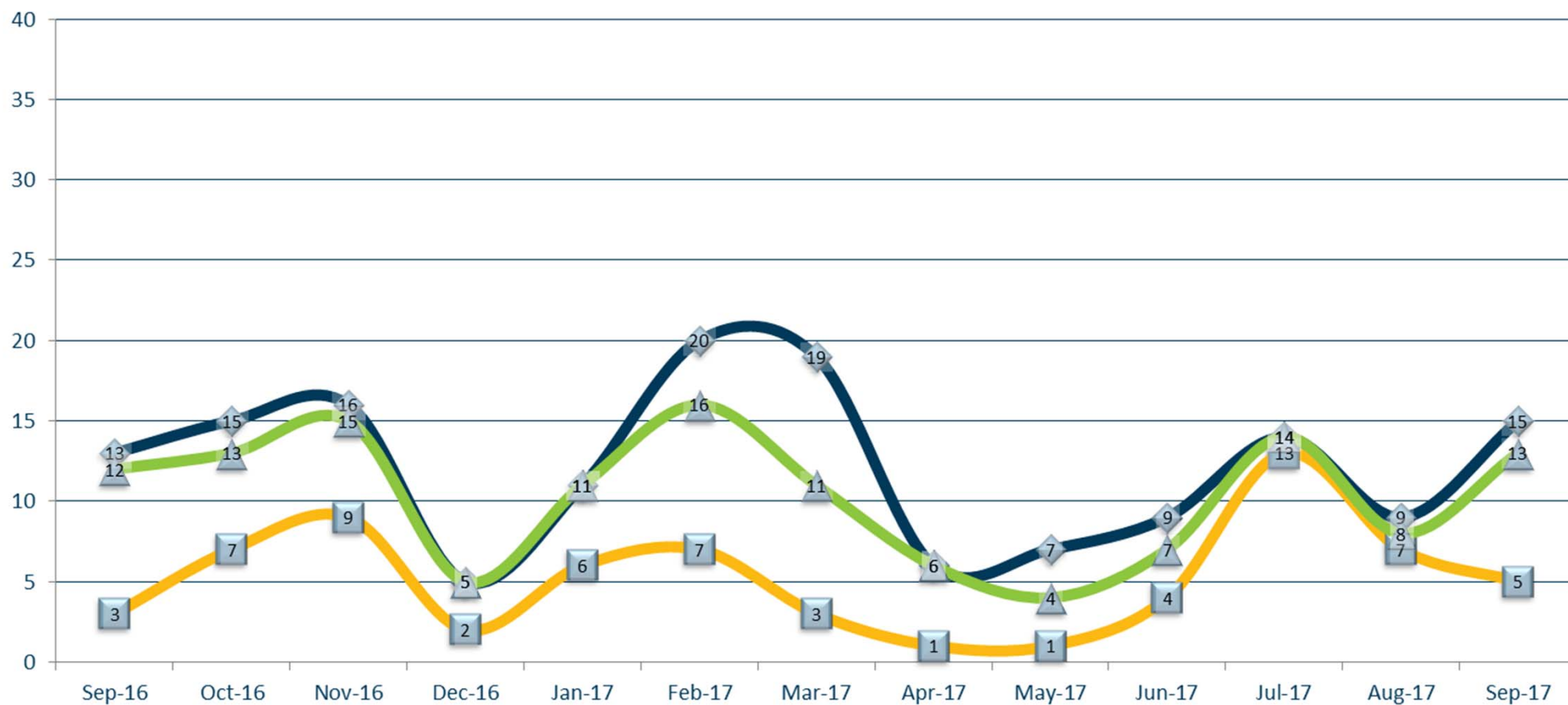
September 2017



New Address/Comments per Month (SDF and LOU)

September 2017

◆ Total Comments ■ New Callers ▲ Individual Callers



NOISE COMMENT REPORT



October 2017

Comments (SDF/LOU)

October 2017

Street	Zip Code	Time Received	Time	Airport	Disturbance Type	CNF Quad	Status	Operation or Comment Type ¹	Deviation Type ²	Comments
Bradley Ave	40217	2017-10-02 15:47:00	2017-10-02 15:47:00	SDF	Too Much Noise	NE	Investigated	Standard	None	I live on Bradley Ave, due north of the airport. At times, usually 4:00 to 6:00 p.m. and 3:30 to 5:30 a.m., the noise from the combined UPS and commercial/military jets makes conversation impossible and wakes us up from sleep. Our house literally shakes. For some reason the last few days of September things got quiet at night at least. I am about to have to spend quite a few dollars trying to soundproof my home because of this noise. I don't know the decibel limit, but I do know when I think it is excessive. Is there any assistance available for this expense?
Jonquil Dr	47130	2017-10-03 05:31:00	2017-10-03 04:50:00	SDF	Too Much Noise	SI	Investigated	Non-Standard	Ops	I am calling because every Tuesday morning about 5:40 a.m. we are woken up because every one or two minutes there is a plane flying overhead. I don't know if it is the same plane flying over and over circling but it seems like it is really close to the ground and for some reason it is a lot louder than other planes. This is really causing us a lot of issues with sleep every week and it seems like it is raising our blood pressure. I was reading on flylouisville.com that they are not supposed to be flying planes between 7 and 9 except for exceptions, so I don't know why this is happening every week.

1. **Standard:** Indicates the "Most Preferred" runway configuration was being utilized at the time of the comment.
Non Standard: Indicates that a "Lesser Preferred" runway configuration was being utilized at the time of the comment.
QHP: QuieterHome Program

2. This column is used to indicate the conditions which most likely necessitated a deviation from the standard procedures.

Comments (SDF/LOU)

October 2017

Street	Zip Code	Time Received	Time	Airport	Disturbance Type	CNF Quad	Status	Operation or Comment Type ¹	Deviation Type ²	Comments
Goss Ave	40217	2017-10-03 08:54:00	2017-10-03 08:54:00	SDF	Noise At Wrong Time	NE	Investigated	Non-Standard	Ops	Yes, yet another question about airport noise. I'm sure you get these all the time and I'm not sure there is much you can do but I am getting desperate. I live in the Goss Avenue area of Germantown and have owned my home there for 10 years. In 10 years of living here, I have never experienced such loud airport noise as I have recently. I am accustomed to city noise and sleep through people walking home from the bars, train whistles, motorcycles, etc. but it is impossible to sleep through these planes. From about 3 a.m. to 5 or 5:30 a.m. I lie awake and hope that the noise won't wake my baby. Is there any relief in sight?
Eastern PKY	40217	2017-10-04 04:59:00	2017-10-04 04:59:00	SDF	Vibrations	NE	Investigated	Non-Standard	None	Noise from the airport the last month or so has been unbearable. In the wee hours of the morning my whole family is being driven out of bed by the UPS planes. Having my 8 and 4 year old up at 2:00, 3:00, and 4:00 in the morning is really taking a toll. UPS does not care about Louisville. Why doesn't anyone care? Why do the profits of UPS take precedent over the health and well-being of the community around the airport? The combination of noise and vibration, yes the planes rattle things on my walls and in my kitchen cabinets, from the planes makes me want to move far, far away from any airport.
Fetter Ave	40217	2017-10-04 13:51:00	2017-10-04 13:51:00	SDF	Other	NE	Investigated	Standard	None	Any word on the FAA approval of the updated NEM? Who is the contact person at the FAA regarding this matter?

1. **Standard:** Indicates the “Most Preferred” runway configuration was being utilized at the time of the comment.
Non Standard: Indicates that a “Lesser Preferred” runway configuration was being utilized at the time of the comment.
QHP: QuieterHome Program

2. This column is used to indicate the conditions which most likely necessitated a deviation from the standard procedures.

Comments (SDF/LOU)

October 2017

Street	Zip Code	Time Received	Time	Airport	Disturbance Type	CNF Quad	Status	Operation or Comment Type ¹	Deviation Type ²	Comments
Chickadee Rd	40213	2017-10-04 14:31:00	2017-10-04 14:31:00	SDF	Too Much Noise	NE	Investigated	Non-Standard	None	It is pretty insensitive for the airport to say that it only hurts for a little while. I guess that is because you do not have to live with the noise.
Fetter Ave	40217	2017-10-05 08:47:00	2017-10-05 03:00:00	SDF	Vibrations	NE	Investigated	Non-Standard	None	These past few weeks it has been impossible to get a night's rest in my neighborhood. I'm not sure why there has been a change in flight patterns, but especially between the hours of 3-5 a.m., my house rattles (no exaggeration!) from the noise of the planes flying overhead. I have lived at this address for about 6 years now, and it has never been like this. I hope that you can provide some kind of explanation, but my real hope is that you can make some kind of change to get things back to how they were!
Lydia St	40217	2017-10-05 10:23:00	2017-10-05 04:00:00	SDF	Vibrations	NE	Investigated	Non-Standard	None	We live on the 1300 block of Lydia Street to the Northwest of SDF. We are supposedly outside the 60 DNL contour, but we are starting to doubt that. UPS planes have all the sudden started waking us up at 4:00 AM, and shake our house for a solid hour plus. We are currently losing 2 hours of sleep every night/morning. Sleep is important to our health.
Goss Ave	40217	2017-10-05 04:30:00	2017-10-05 04:39:00	SDF	Too Much Noise	NE	Investigated	Non-Standard	None	It's 4:30 a.m. and I'm unable to sleep because of planes taking off one after the other. Is there any word on how much longer this will last?

1. **Standard:** Indicates the "Most Preferred" runway configuration was being utilized at the time of the comment.
Non Standard: Indicates that a "Lesser Preferred" runway configuration was being utilized at the time of the comment.
QHP: QuieterHome Program

2. This column is used to indicate the conditions which most likely necessitated a deviation from the standard procedures.

Comments (SDF/LOU)

October 2017

Street	Zip Code	Time Received	Time	Airport	Disturbance Type	CNF Quad	Status	Operation or Comment Type ¹	Deviation Type ²	Comments
Fayette AV	40213	2017-10-05 07:30:00	2017-10-05 07:30:00	SDF	Too Much Noise	NE	Investigated	Non-Standard	None	There were planes going over all night long. Very, very loud and it is getting really old. I have called and called and no one ever calls me back about it. They said they were doing a redistricting of the maps and I have not heard anything back about that. So, I am going to take up a petition in my neighborhood so that we can get our side taken care of. I know that they did the Quieter Home on all the other neighborhoods except one side and that one side is a street. So I just wanted to make a complaint.
Fayette AV	40213	2017-10-05 07:57:00	2017-10-05 07:57:00	SDF	Too Much Noise	NE	Investigated	Non-Standard	None	This is me again. Calling to complain.
Goss Ave	40217	2017-10-06 07:00:00	2017-10-06 07:00:00	SDF	Other	NE	Investigated	Standard	None	Whatever has been done to mitigate the early morning noise in Germantown is wonderful. Last night we finally got some rest. I am very grateful.
Warnock St	40217	2017-10-09 11:50:00	2017-10-09 11:50:00	SDF	Other	NW	Investigated	Standard	None	I read the article in the paper today. I have lived here for 20 years and I am tired of hearing how the rich people in Audubon Park have airplane noise. We have noise from both runways and they only have it from one.
E Barbee AV	40217	2017-10-09 15:42:00	2017-10-09 15:42:00	SDF	Other	NE	Investigated	Standard	None	I live on E Barbee Avenue. I was given your name to check on when our street would be included in the Quite Home of Louisville program.

1. **Standard:** Indicates the “Most Preferred” runway configuration was being utilized at the time of the comment.
Non Standard: Indicates that a “Lesser Preferred” runway configuration was being utilized at the time of the comment.
QHP: QuieterHome Program

2. This column is used to indicate the conditions which most likely necessitated a deviation from the standard procedures.

Comments (SDF/LOU)

October 2017

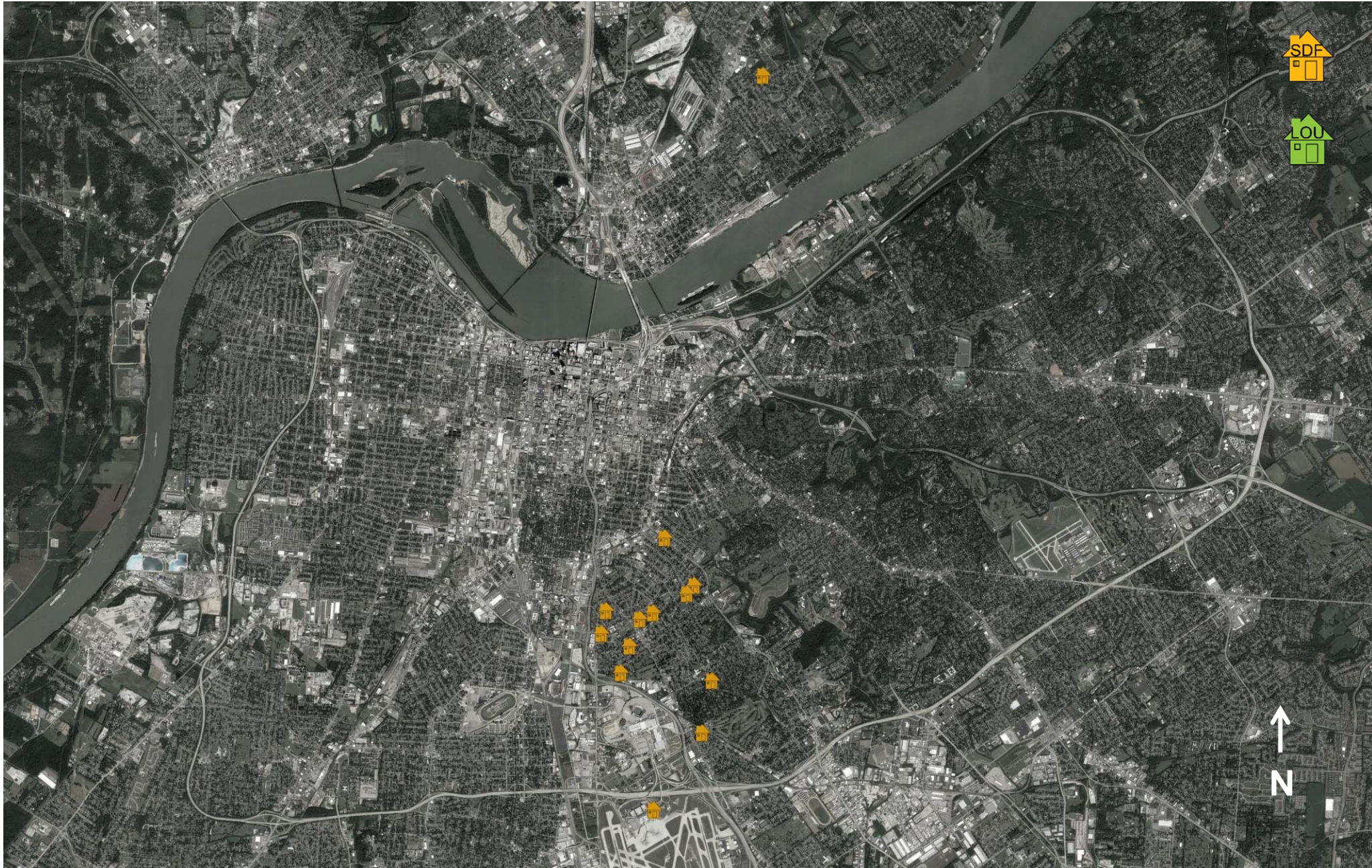
Street	Zip Code	Time Received	Time	Airport	Disturbance Type	CNF Quad	Status	Operation or Comment Type ¹	Deviation Type ²	Comments
Bradley Ave	40217	2017-10-15 16:31:00	2017-10-15 16:15:00	SDF	Over Use of Runway	NE	Investigated	Non-Standard	Weather	I live on Bradley Avenue just north of the airport. I emptied my garbage a moment ago and in the 5 minutes it took me to do that 4 giant UPS airplanes went over my house taking off to the north. I thought that was not going to be a problem. However, it is increasingly becoming a problem and I don't know what to do about it other than move away. So kindly get back to me.
Ellsworth Ave	40217	2017-10-16 12:47:00	2017-10-16 12:47:00	SDF	Other	NE	Investigated	Standard	None	I'm a realtor and just sold some clients a home on Ellsworth Avenue. They had heard from a neighbor that at one time there had been some monetary help provided to improve windows, etc. to reduce the noise from air traffic in their area. How can I direct them to learn more about this program, if it exists?
Administration Dr	40209	2017-10-21 05:46:00	2017-10-21 05:46:00	SDF	Too Much Noise	NE	Investigated	Standard`	None	We can't sleep!
							Received	LRAA	17	

1. **Standard:** Indicates the "Most Preferred" runway configuration was being utilized at the time of the comment.
Non Standard: Indicates that a "Lesser Preferred" runway configuration was being utilized at the time of the comment.
QHP: QuieterHome Program

2. This column is used to indicate the conditions which most likely necessitated a deviation from the standard procedures.

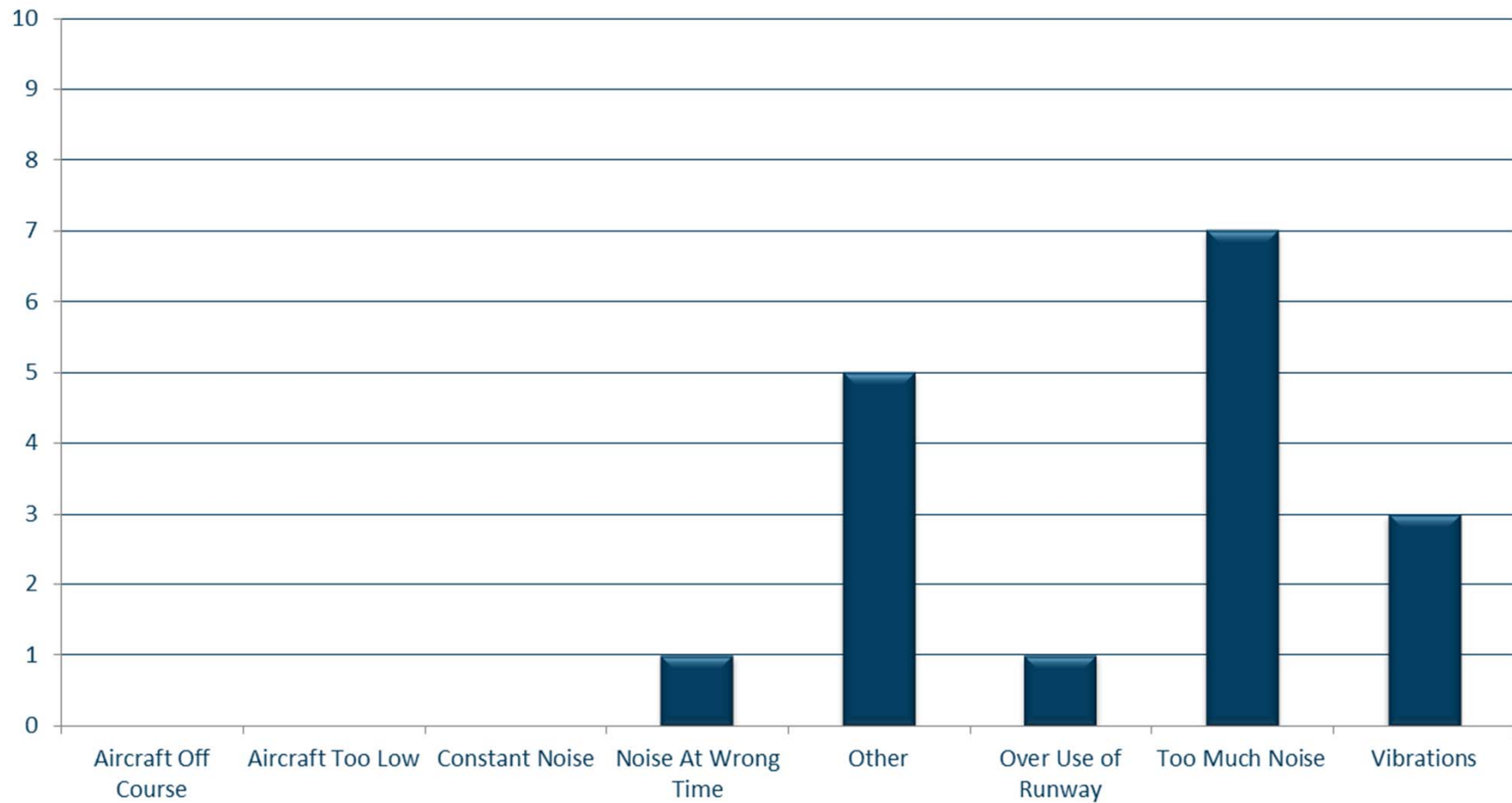
Comment Location (SDF/LOU)

October 2017



Comment Type (SDF and LOU)

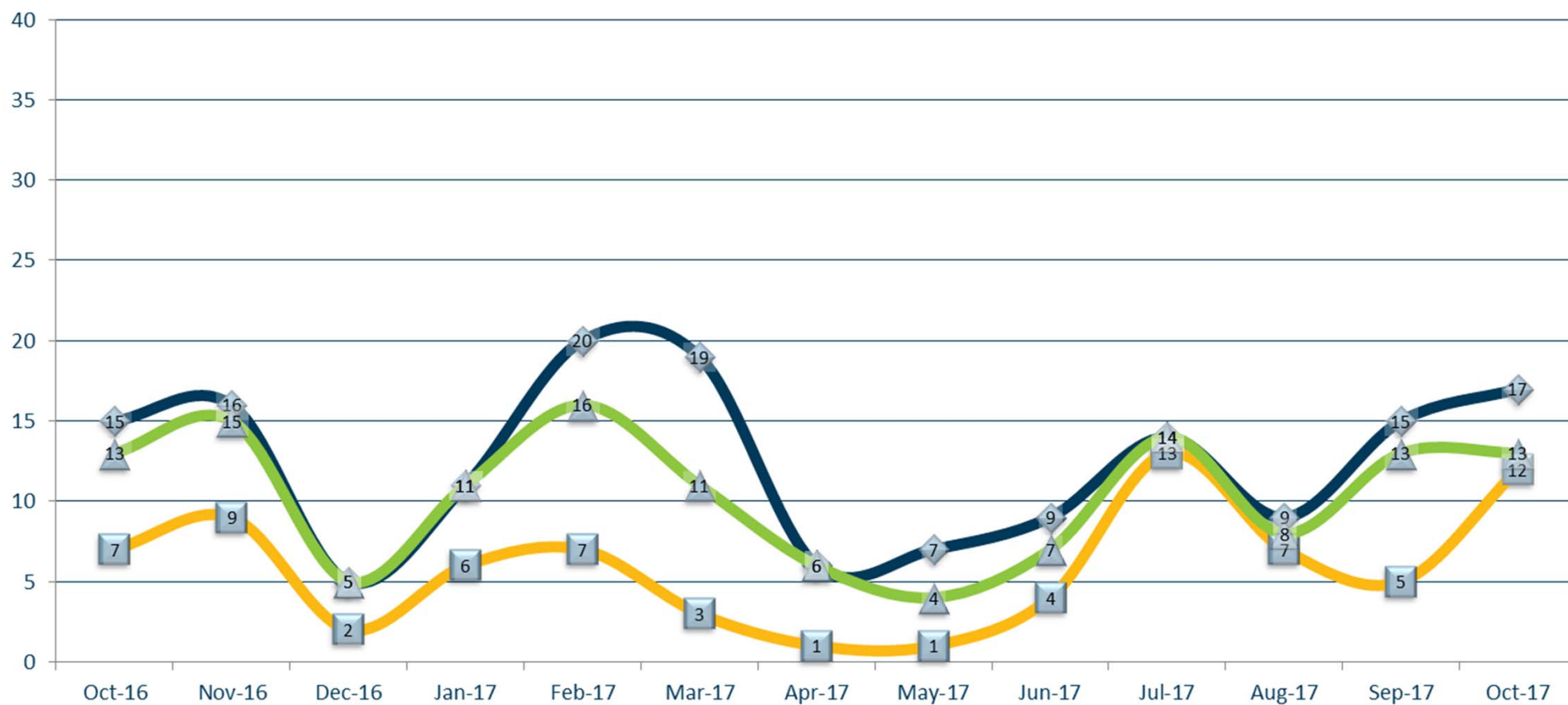
October 2017



New Address/Comments per Month (SDF and LOU)

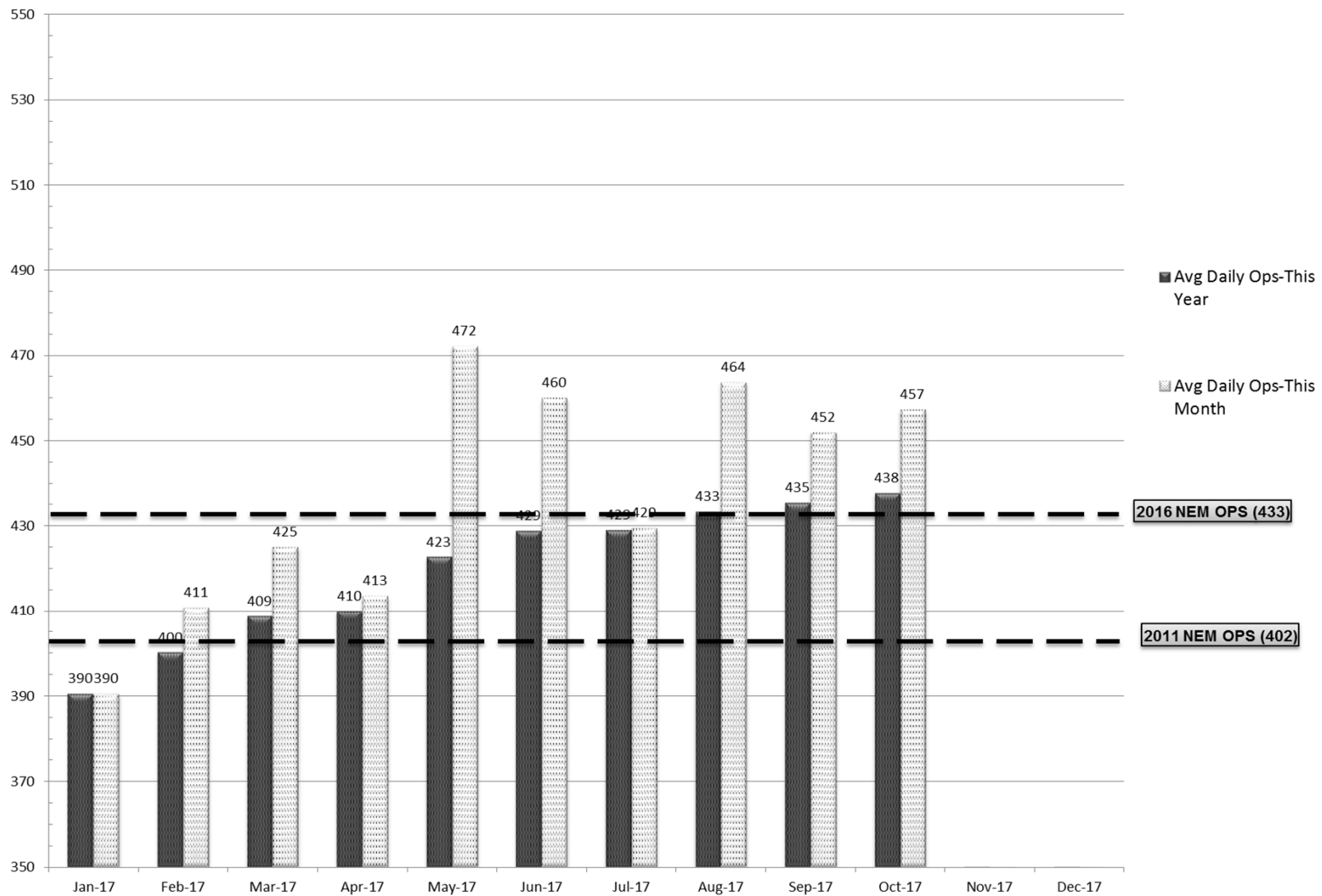
October 2017

◆ Total Comments ■ New Callers ▲ Individual Callers



Operations (SDF)

As of October 31, 2017



Daily Runway Use Uncorrected (SDF) September 2017

Flow	Time	Fri 9/1	Sat 9/2	Sun 9/3	Mon 9/4	Tue 9/5	Wed 9/6	Thu 9/7	Fri 9/8	Sat 9/9	Sun 9/10	Mon 9/11	Tue 9/12	Wed 9/13	Thu 9/14	Fri 9/15	Sat 9/16	Sun 9/17	Mon 9/18	Tue 9/19	Wed 9/20	Thu 9/21	Fri 9/22	Sat 9/23	Sun 9/24	Mon 9/25	Tue 9/26	Wed 9/27	Thu 9/28	Fri 9/29	Sat 9/30	Time
North Flow	0:00																															0:00
	0:30																															0:30
	1:00																															1:00
	1:30																															1:30
	2:00																															2:00
	2:30																															2:30
South Flow	3:00																															3:00
	3:30																															3:30
	4:00																															4:00
	4:30																															4:30
	5:00																														XXX	5:00
	5:30																															5:30
	6:00																												XXX			6:00
	6:30																															6:30
	7:00																															7:00
	7:30																														XXX	7:30
	8:00																													XXX	XXX	8:00
	8:30																															8:30
North Flow	9:00																															9:00
	9:30																				XXX						XXX					9:30
	10:00																															10:00
	10:30																															10:30
	11:00																															11:00
	11:30																													XXX		11:30
South Flow	12:00																	XXX														12:00
	12:30																															12:30
	13:00																															13:00
	13:30																															13:30
	14:00																															14:00
	14:30																															14:30
	15:00																															15:00
	15:30																															15:30
	16:00																															16:00
	16:30																															16:30
	17:00																															17:00
	17:30												XXX		XXX																	17:30
	18:00																															18:00
North Flow	18:30																															18:30
	19:00																															19:00
	19:30																															19:30
	20:00					XXX																XXX										20:00
	20:30																															20:30
	21:00																															21:00
North Flow	21:30																															21:30
	22:00																				XXX											22:00
	22:30																															22:30
	23:00																															23:00
North Flow	23:30																															23:30
	0:00																															0:00

Preferred Flow

DATIS Reported Conditions Indicate Support for Non-Preferred Flow

DATIS Reported Conditions Do Not Indicate Support for Non-Preferred Flow

South Flow is Preferred Flow from 09:30 Saturday - 09:30 Monday

XXX Complaint

Source: Louisville International Airport
Aircraft Flight Tracking and Noise Management System (AFTNMS)

Daily Runway Use (SDF)

Tower Comments September 2017

Day	Date	Time	Comment
Fri	1-Sep-17		
Sat	2-Sep-17	1130-1230	Wind 3511
Sat	2-Sep-17	1430-1530	Wind decreasing, went south at 1600.
Sun	3-Sep-17		
Mon	4-Sep-17		
Tue	5-Sep-17	1300-2130	Thunderstorms wet runways wind 3212
Wed	6-Sep-17	1300-2130	Wind 3510
Thu	7-Sep-17	1300-1800	Wind & wind shear, wind 3011
Fri	8-Sep-17		
Sat	9-Sep-17		
Sun	10-Sep-17		
Mon	11-Sep-17	1300-1530	Wind 0109
Mon	11-Sep-17	1830-2130	Wind 0414
Tue	12-Sep-17		
Wed	13-Sep-17		
Thu	14-Sep-17	0730-0900	Airport construction TWY B
Thu	14-Sep-17	1300-2130	Airport construction TWY B
Fri	15-Sep-17	0300-0900	Airport construction TWY B
Sat	16-Sep-17	0300-0700	Airport construction TWY B
Sun	17-Sep-17		
Mon	18-Sep-17		
Tue	19-Sep-17	0300-0700	Airport construction TWY B and WX
Tue	19-Sep-17	1500-2130	Airport construction TWY B
Wed	20-Sep-17	0300-0700	Airport construction TWY B
Thu	21-Sep-17	0300-0700	TWY B const, went south @0615 after outboun
Thu	21-Sep-17	1300-1830	Airport construction TWY B
Fri	22-Sep-17	0300-0700	Airport construction TWY B
Fri	22-Sep-17	1300-1600	Airport construction TWY B
Sat	23-Sep-17		
Sun	24-Sep-17		
Mon	25-Sep-17	1530-2130	Airport construction TWY B
Tue	26-Sep-17	0300-0900	Airport construction TWY B
Tue	26-Sep-17	1300-2130	Airport construction TWY B
Wed	27-Sep-17	0300-0700	Airport construction TWY B
Wed	27-Sep-17	0930-1230	Airport construction TWY B
Thu	28-Sep-17	1300-1430	Wind 0109
Thu	28-Sep-17	2030-2130	Wind 0210
Fri	29-Sep-17	0300-0900	Valid reason not documented.
Fri	29-Sep-17	1300-1730	Wind 0109
Fri	29-Sep-17	1930-2130	Wind 3510
Sat	30-Sep-17	0300-0930	Airport construction TWY B

Daily Runway Use Uncorrected (SDF) October 2017

Flow	Time	Sun 10/1	Mon 10/2	Tue 10/3	Wed 10/4	Thu 10/5	Fri 10/6	Sat 10/7	Sun 10/8	Mon 10/9	Tue 10/10	Wed 10/11	Thu 10/12	Fri 10/13	Sat 10/14	Sun 10/15	Mon 10/16	Tue 10/17	Wed 10/18	Thu 10/19	Fri 10/20	Sat 10/21	Sun 10/22	Mon 10/23	Tue 10/24	Wed 10/25	Thu 10/26	Fri 10/27	Sat 10/28	Sun 10/29	Mon 10/30	Tue 10/31	Time
North Flow	0:00																															0:00	
	0:30																															0:30	
	1:00																															1:00	
	1:30																															1:30	
	2:00																															2:00	
	2:30																															2:30	
South Flow	3:00						XXX																									3:00	
	3:30						XXX																									3:30	
	4:00						XXX																									4:00	
	4:30						XXX																									4:30	
	5:00																															5:00	
	5:30			XXX		XXX																	XXX									5:30	
	6:00																															6:00	
	6:30																															6:30	
	7:00							XXX																								7:00	
	7:30							XXX																								7:30	
	8:00							XXX																								8:00	
	8:30																															8:30	
9:00			XXX																													9:00	
North Flow	9:30																															9:30	
	10:00																															10:00	
	10:30																															10:30	
	11:00																															11:00	
	11:30									XXX																						11:30	
	12:00																															12:00	
12:30																															12:30		
South Flow	13:00																															13:00	
	13:30																															13:30	
	14:00																															14:00	
	14:30					XXX																										14:30	
	15:00										XXX																					15:00	
	15:30																															15:30	
	16:00		XXX														XXX															16:00	
	16:30																															16:30	
	17:00																															17:00	
	17:30																															17:30	
	18:00																															18:00	
	18:30																															18:30	
	19:00																															19:00	
	19:30																															19:30	
20:00																															20:00		
20:30																															20:30		
21:00																															21:00		
21:30																															21:30		
North Flow	22:00																															22:00	
	22:30																															22:30	
	23:00																															23:00	
	23:30																															23:30	
0:00																															0:00		
Flow	Time	Sun 10/1	Mon 10/2	Tue 10/3	Wed 10/4	Thu 10/5	Fri 10/6	Sat 10/7	Sun 10/8	Mon 10/9	Tue 10/10	Wed 10/11	Thu 10/12	Fri 10/13	Sat 10/14	Sun 10/15	Mon 10/16	Tue 10/17	Wed 10/18	Thu 10/19	Fri 10/20	Sat 10/21	Sun 10/22	Mon 10/23	Tue 10/24	Wed 10/25	Thu 10/26	Fri 10/27	Sat 10/28	Sun 10/29	Mon 10/30	Tue 10/31	Time

Preferred Flow

DATIS Reported Conditions Indicate Support for Non-Preferred Flow

DATIS Reported Conditions Do Not Indicate Support for Non-Preferred Flow

South Flow is Preferred Flow from 09:30 Saturday - 09:30 Monday

XXX Complaint

Source: Louisville International Airport
Aircraft Flight Tracking and Noise Management System (AFTNMS)

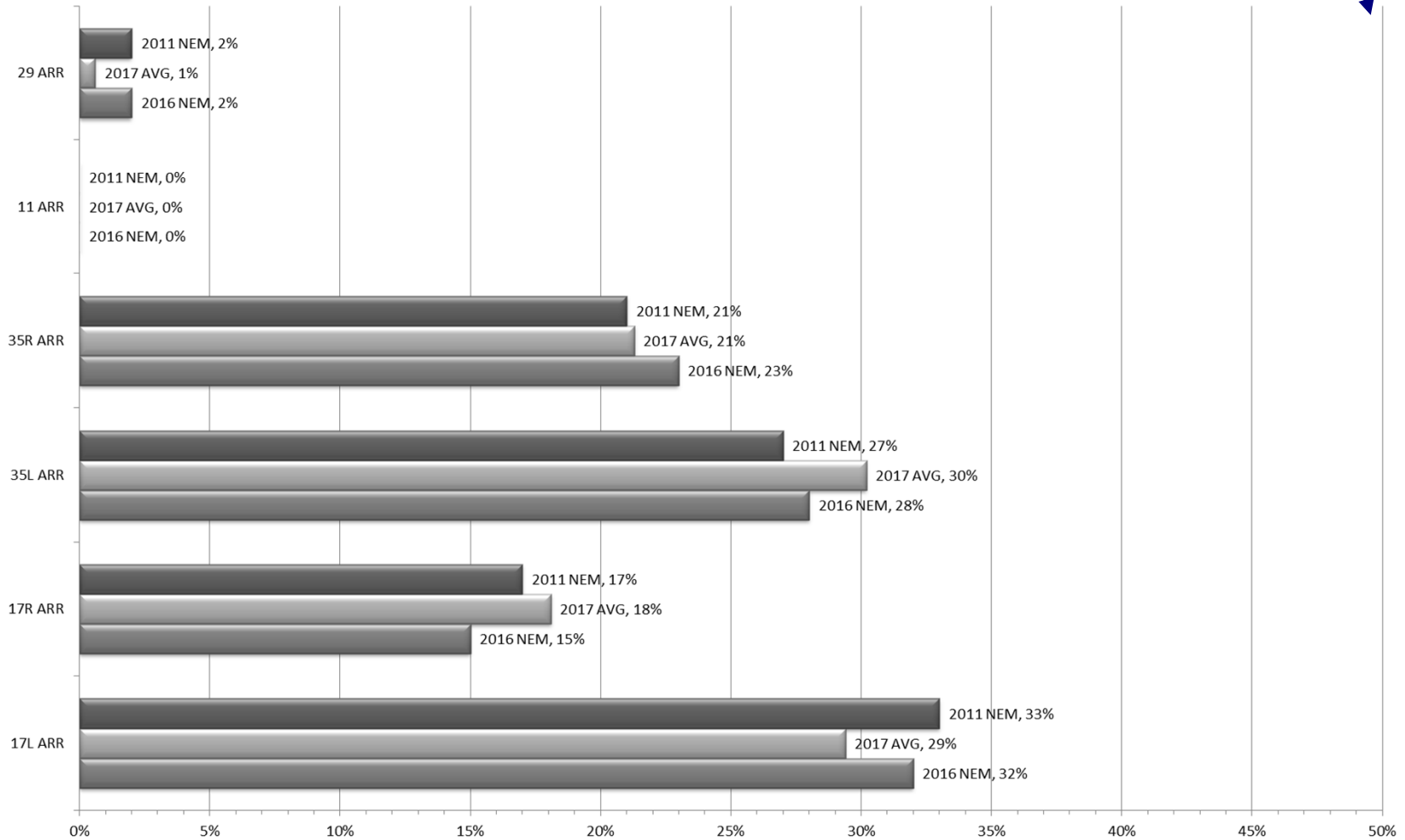
Daily Runway Use (SDF)

Tower Comments September 2017

Day	Date	Time	Comment
Sun	1-Oct-17		
Mon	2-Oct-17		
Tue	3-Oct-17	0300-0900	Valid reason not documented, likely TWY B construction
Tue	3-Oct-17	1700-1730	TWY construction
Wed	4-Oct-17	0900-0700	TWY construction
Wed	4-Oct-17	0930-1230	PIREP 13-16 kt tailwinds
Wed	4-Oct-17	1700-2130	TWY construction
Thu	5-Oct-17	0300-0700	Log shows south@0615. Likely TWY B construction from 0300-0615
Thu	5-Oct-17	1500-1730	TWY B construction
Fri	6-Oct-17		
Sat	7-Oct-17		
Sun	8-Oct-17		
Mon	9-Oct-17	1130-1230	Wind 2408 wet runways
Tue	10-Oct-17	0930-1230	TWY C closed, deconflict acft from vehicles
Wed	11-Oct-17		
Thu	12-Oct-17		
Fri	13-Oct-17		
Sat	14-Oct-17		
Sun	15-Oct-17		
Mon	16-Oct-17		
Tue	17-Oct-17	0930-1230	TWY C closed, deconflict acft from vehicles
Wed	18-Oct-17	0930-1230	TWY C closed, deconflict acft from vehicles
Thu	19-Oct-17		
Fri	20-Oct-17		
Sat	21-Oct-17		
Sun	22-Oct-17		
Mon	23-Oct-17		
Tue	24-Oct-17	0930-1230	Wind 2312
Tue	24-Oct-17	1600-1930	Wind 2822
Wed	25-Oct-17	1500-1730	Wind 3014
Thu	26-Oct-17	2200-0000	Wind 1408
Fri	27-Oct-17	0000-0230	Wind 1508
Sat	28-Oct-17	0730-1030	Wind 2908 wet runways
Sun	29-Oct-17	0200-0930	Wind 3208
Sun	29-Oct-17	1100-1700	Wind 3112
Mon	30-Oct-17	2100-2200	Wind 3212
Tue	31-Oct-17		

Runway Use (SDF Arrivals)

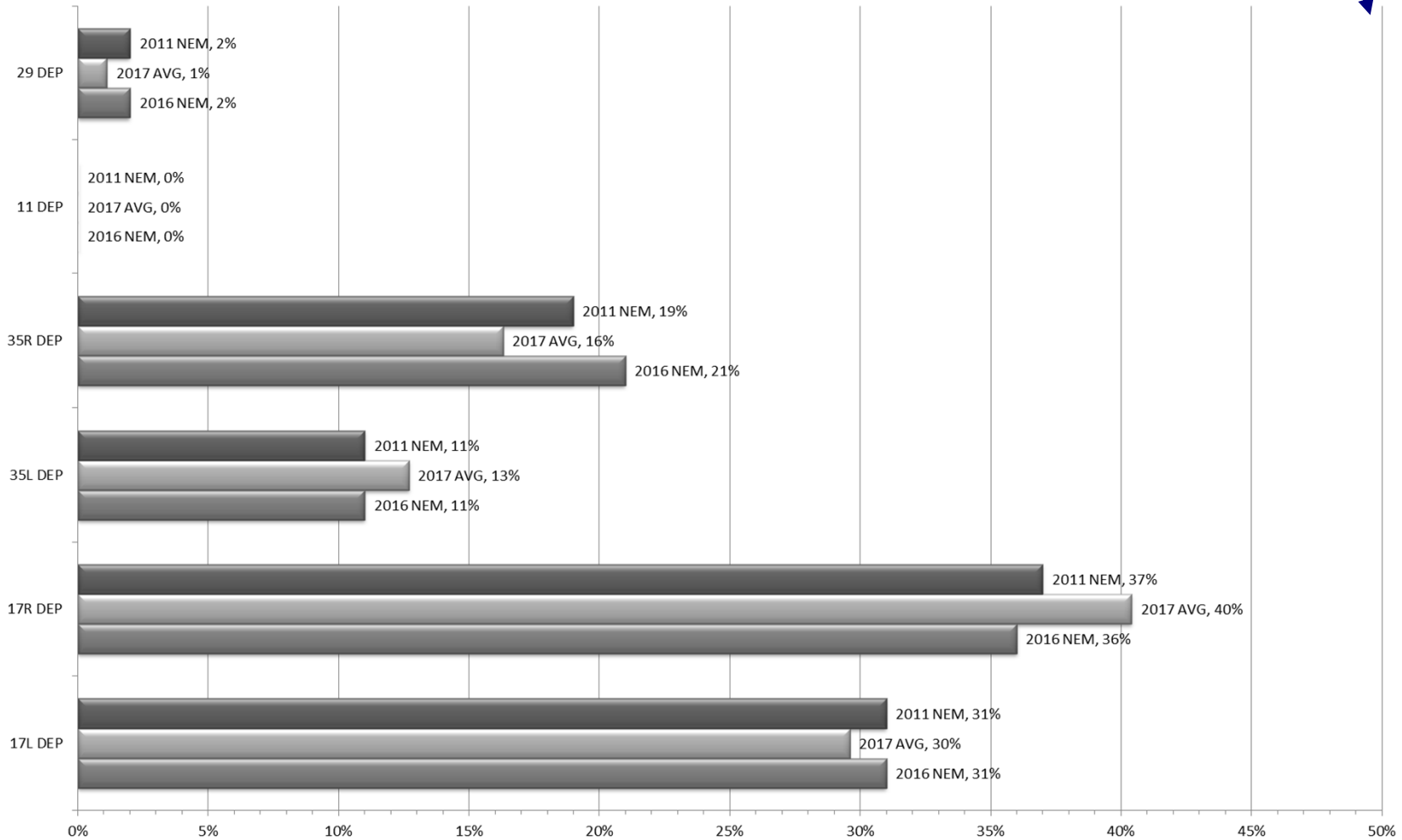
NEM vs. Actual
January 1 - October 31, 2017



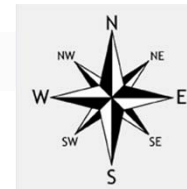
Source: Louisville International Airport
Aircraft Flight Tracking and Noise Management System (AFTNMS)

Runway Use (SDF Departures)

NEM vs. Actual
January 1 - October 31, 2017



Source: Louisville International Airport
Aircraft Flight Tracking and Noise Management System (AFTNMS)



Runway Use 0930L-1230L_(SDF)

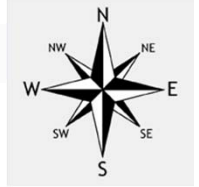
As of October 31, 2017

	Arrival Percentage by Runway								Departure Percentage by Runway							
	11	17L	17R	29	35L	35R	% From South	Arrival Count	11	17L	17R	29	35L	35R	% To North	Departure Count
Nov-15	0	20	25	11	22	22	44	676	0	15	26	12	5	42	47	380
Dec-15	0	26	19	0	37	18	55	1082	0	24	25	0	5	46	51	449
Jan-16	0	26	22	2	30	20	50	650	0	26	22	3	11	38	49	312
Feb-16	0	17	12	0	49	22	71	738	1	13	14	2	19	51	70	314
Mar-16	0	33	37	0	21	9	30	796	0	31	29	4	9	27	36	396
Apr-16	0	27	17	8	31	17	48	712	1	30	17	6	15	31	46	356
May-16	0	17	25	0	37	21	58	821	0	21	19	4	25	31	56	394
Jun-16	0	9	12	0	49	30	79	816	0	14	9	4	24	49	73	392
Jul-16	0	17	30	1	32	20	52	723	0	17	27	2	14	40	54	394
Aug-16	0	14	46	0	21	19	40	845	0	18	35	1	13	33	46	404
Sep-16	0	14	27	0	37	22	59	856	0	14	22	0	9	55	64	399
Oct-16	0	16	35	0	24	25	49	803	0	19	25	1	0	55	55	393
Nov-16	0	27	31	0	24	18	42	912	0	26	30	0	1	43	44	394
Dec-16	0	9	6	3	52	30	82	1090	0	9	11	3	10	67	77	429
Jan-17	0	17	22	6	32	23	55	871	0	15	17	5	6	57	63	365
Feb-17	0	21	27	0	28	24	52	815	0	23	28	0	3	46	49	363
Mar-17	0	25	16	0	35	24	59	943	0	23	23	0	11	43	54	395
Apr-17	0	16	49	1	22	12	34	836	1	19	38	5	10	27	37	397
May-17	0	28	20	0	30	22	52	1027	0	29	16	0	13	42	55	460
Jun-17	0	29	28	0	16	27	43	960	0	24	34	1	10	31	41	435
Jul-17	0	30	28	0	23	19	42	866	0	28	20	2	6	44	50	377
Aug-17	0	15	24	0	42	19	61	1001	0	20	18	0	10	52	62	453
Sep-17	0	10	6	1	45	38	83	903	0	14	3	2	12	69	81	495
Oct-17	0	21	24	0	29	26	55	936	0	25	18	1	9	47	56	451
Monthly Avg.	0	20	25	1	32	22	54		0	21	22	2	10	44	55	

Source: Louisville International Airport
Aircraft Flight Tracking and Noise Management System (AFTNMS)

Gate Compliance by Runway

As of October 31, 2017

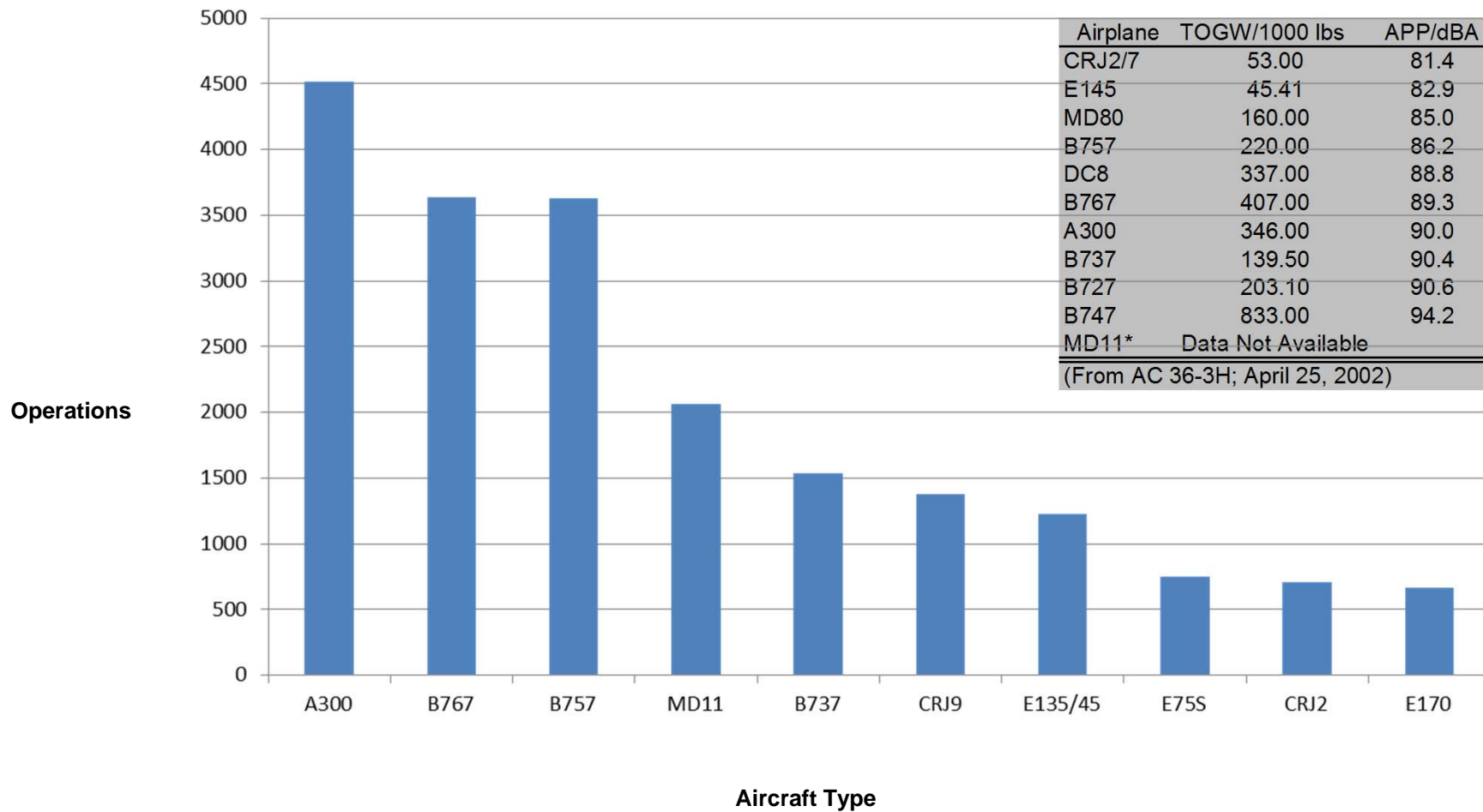


ARRIVALS Percent Compliant					Departure Percent Compliant					
Month	17L	17R	35L	35R	ARR AVG	17L	17R	35L	35R	DEP AVG
Sep-15	79%	86%	84%	83%	83%	78%	88%	77%	91%	84%
Oct-15	82%	90%	88%	85%	86%	71%	88%	66%	86%	78%
Nov-16	82%	93%	87%	86%	87%	80%	88%	75%	87%	83%
Dec-16	89%	97%	93%	94%	93%	75%	90%	83%	90%	85%
Jan-16	83%	94%	89%	88%	89%	74%	90%	63%	83%	78%
Feb-16	80%	94%	91%	91%	89%	85%	89%	75%	83%	83%
Mar-16	85%	95%	89%	88%	89%	70%	87%	73%	85%	79%
Apr-16	80%	90%	86%	87%	86%	83%	83%	69%	82%	79%
May-16	82%	93%	86%	87%	87%	82%	87%	65%	88%	81%
Jun-16	77%	91%	85%	85%	85%	87%	88%	75%	85%	84%
Jul-16	84%	92%	88%	91%	89%	82%	88%	61%	88%	80%
Aug-16	85%	94%	87%	88%	89%	85%	88%	72%	89%	84%
Sep-16	80%	91%	89%	89%	87%	84%	90%	61%	88%	81%
Oct-16	82%	92%	86%	86%	87%	82%	90%	74%	90%	84%
Nov-16	84%	94%	90%	86%	89%	78%	89%	70%	88%	81%
Dec-16	89%	94%	92%	92%	92%	80%	87%	74%	80%	80%
Jan-17	88%	96%	93%	92%	92%	66%	91%	78%	84%	80%
Feb-17	87%	95%	91%	88%	90%	72%	92%	81%	87%	83%
Mar-17	87%	96%	90%	89%	91%	70%	89%	72%	88%	80%
Apr-17	86%	94%	87%	92%	90%	69%	86%	76%	85%	79%
May-17	86%	90%	90%	89%	89%	72%	90%	67%	84%	78%
Jun-17	87%	87%	87%	88%	87%	79%	91%	69%	87%	82%
Jul-17	87%	92%	90%	90%	90%	81%	89%	67%	86%	81%
Aug-17	84%	93%	90%	87%	89%	80%	84%	73%	91%	82%
Sep-17	87%	91%	88%	90%	89%	91%	90%	74%	85%	85%
Oct-17	88%	95%	89%	88%	90%	80%	87%	77%	89%	83%
24 Month Avg.					88%					81%

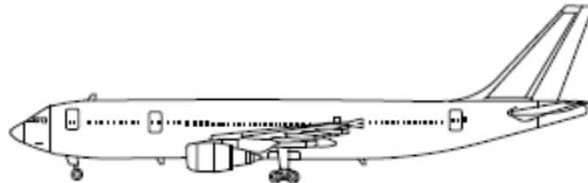
Source: Louisville International Airport
Aircraft Flight Tracking and Noise Management System (AFTNMS)

Operations by Aircraft Type (SDF) Only Top 10 Aircraft Types Shown

September / October 2017



Sample Aircraft Types (SDF)



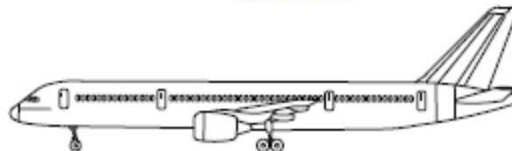
A300



B767



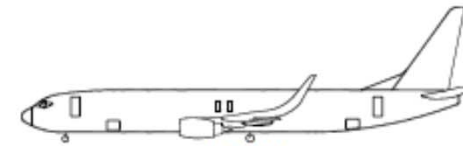
E135/45



B757



MD11



B737



CRJ2



E170



MD80



CRJ9