

Community Noise Forum
Monday, January 22, 2018
Agenda

- I. Call to order: 6:00 PM
- II. Minutes November 27, 2017
- III. Part 150 NCP
 - A. NEM Update
 - B. Noise Insulation Program
 - C. Contraflow Exceptions
- IV. Current Noise Concerns
 - A. Working Group Report
 - B. Noise Concerns/Complaints
 - C. Runway Utilization
 - D. Construction and Maintenance Activity
- VI. Announcements
- VII. Guest Comments
- VIII. Next Meeting: March 26, 2018
- IX. Adjournment

COMMUNITY NOISE FORUM (CNF)
Monday, November 27, 2017

Members

John Sistarenik, ANA
Bob Slattery, LRAA
Mary Rose Evans, LRAA Board
Tom Foote, Airline Affairs
Brian Sinnwell, LRAA

Mike Zanone, NW
John Greathouse, Southwest (Alt)
Denny Thompson, SE
Verná Goately, Metro

Guests

Jeff Donohue, State Representative Fairdale
Bill Graham, Fairdale
Steve & Veronica Winsett, Bradley Ave.
Jonathan Bonds, UPS

The meeting was called to order at 6:00 p.m. by John Sistarenik. The minutes from July 24th and September 28th meetings were approved.

Part 150 NCP:

- A. Update: University of Louisville:** A total of 24 buildings have been tested. Testing results were received in October 2016. Two of the 24 buildings tested had an overall interior noise level above 45 dB. There are six additional buildings that have rooms that exceed the 45 dB criteria on an individual basis but do not qualify for full treatment of the entire structure. Currently, we are in the environmental/design phase of the project. The draft EA has been submitted to the FAA for review.
- B. Contraflow Exceptions:** Contraflow for September was 85% **for arrivals** from the south and 31% **for departures** to the south. In October, **arrivals** from south were 81% and **departures** to the south were 82%. A daily summary for September and October is contained in the handout. The 2 year average (November 2015- October 2017) for contraflow is 73% for arrivals and 77% for departures. A monthly summary going back 8 years is also included in the handout.
- C. NEM Update:** No updates to report at this time. The FAA says that there are new requirements this year that Headquarters has to review prior to accepting the maps. The ADO says there are no issues at this time.

Current Noise Concerns:

- A. Report on Noise Concerns/Complaints:** A total of 15 comments were received in September. A cluster of comments were received relating to 35R departures to the north due to construction on Taxiway "B". In October, a total of 17 comments were received. All but 2 were from the NE quadrant and attributed to departures to the north. Comments and locations are contained in the handout.
- B. Runway Utilization:** Runway utilization percentages for September and October are contained in the handout. Daily runway utilization and comments from the Air Traffic Control Tower are also included in the handout. Utilization of the west runway is down 2% for arrivals from the north and 4% for departures to the south.
- C. Construction and Maintenance Activity:** Brian Sinnwell reported that it was a busy spring/summer on the airfield. Two pavement rehab projects, an apron project, geometric changes to the airfield, and a lighting project all totaling around \$15M were completed.

Guest Comments: State Representative Jeff Donohue (District 37) introduced himself and Mr. Bill Graham. They both live in the area of the Jefferson Memorial Forrest and have noticed an increase in flights and noise. Bill wants to know why aircraft is going so far south to make a turn towards the west? Why aren't shorter routes being used to go west? Bob responded by saying the aircraft are flying the procedures. The procedures were established with compatible land use in mind. Aircraft head toward the county line then make their turn. These were the procedures set up in the Noise Compatibility Program. Bob will work with Mr. Graham and get additional information for review with UPS and Johnathan Bonds (UPS). A working group meeting will be scheduled in January to review this information in detail.

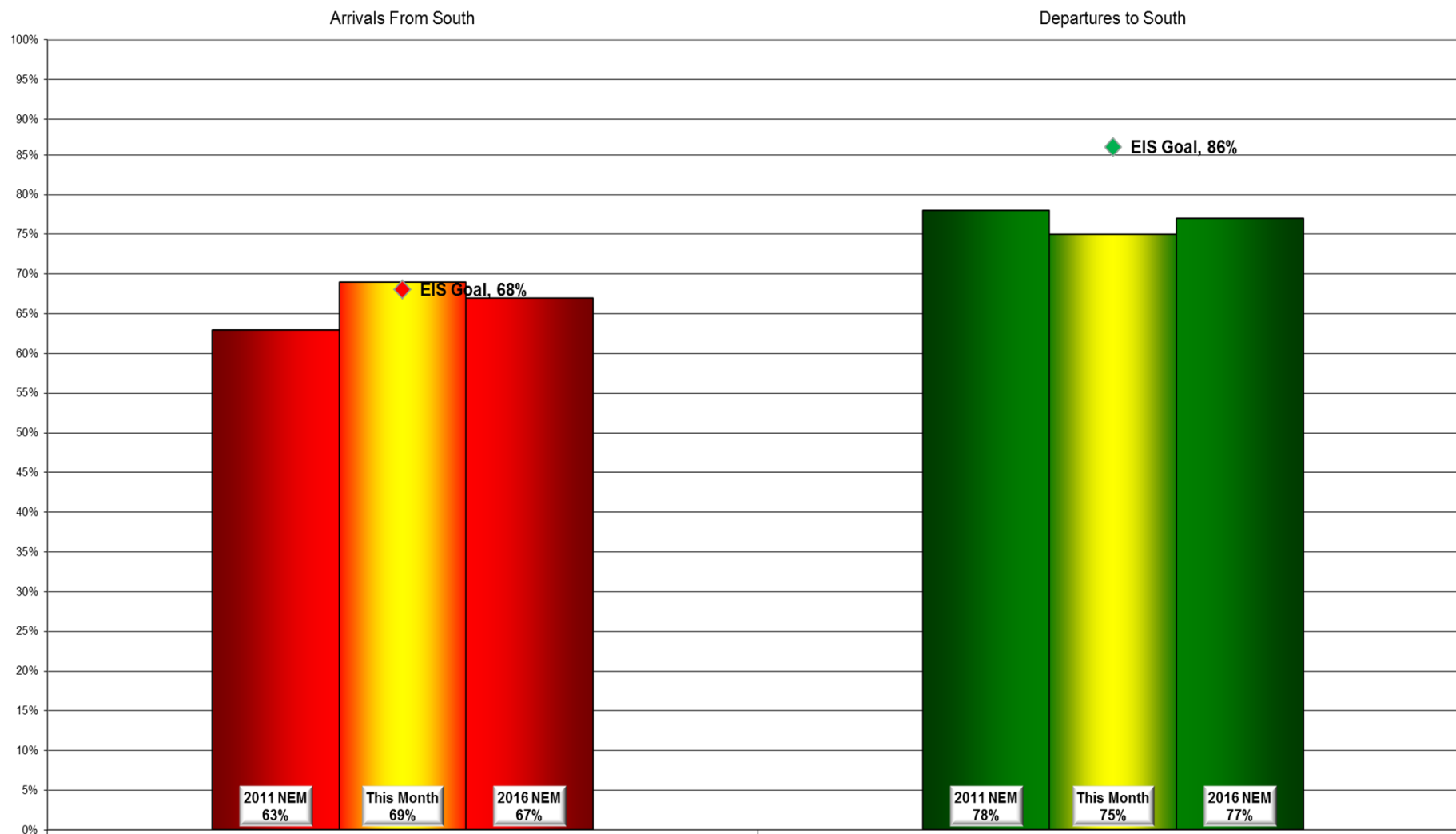
UPS Guest Speaker Presentation by Jay R. Lilly: Mr. Lilly gave a presentation on UPS Worldport operations. Peak season for UPS started November 27 and will go through December 25.

Announcements: None.

Next Meeting: Monday, January 22, 2018 at 6 p.m.

Adjournment: A motion was made to adjourn the meeting at 7:20 p.m.

Monthly Contraflow November 1-30, 2017



Daily Runway Use Summary – November 2017

(from 10:00 PM date list in first column to 7:00 AM the following morning)

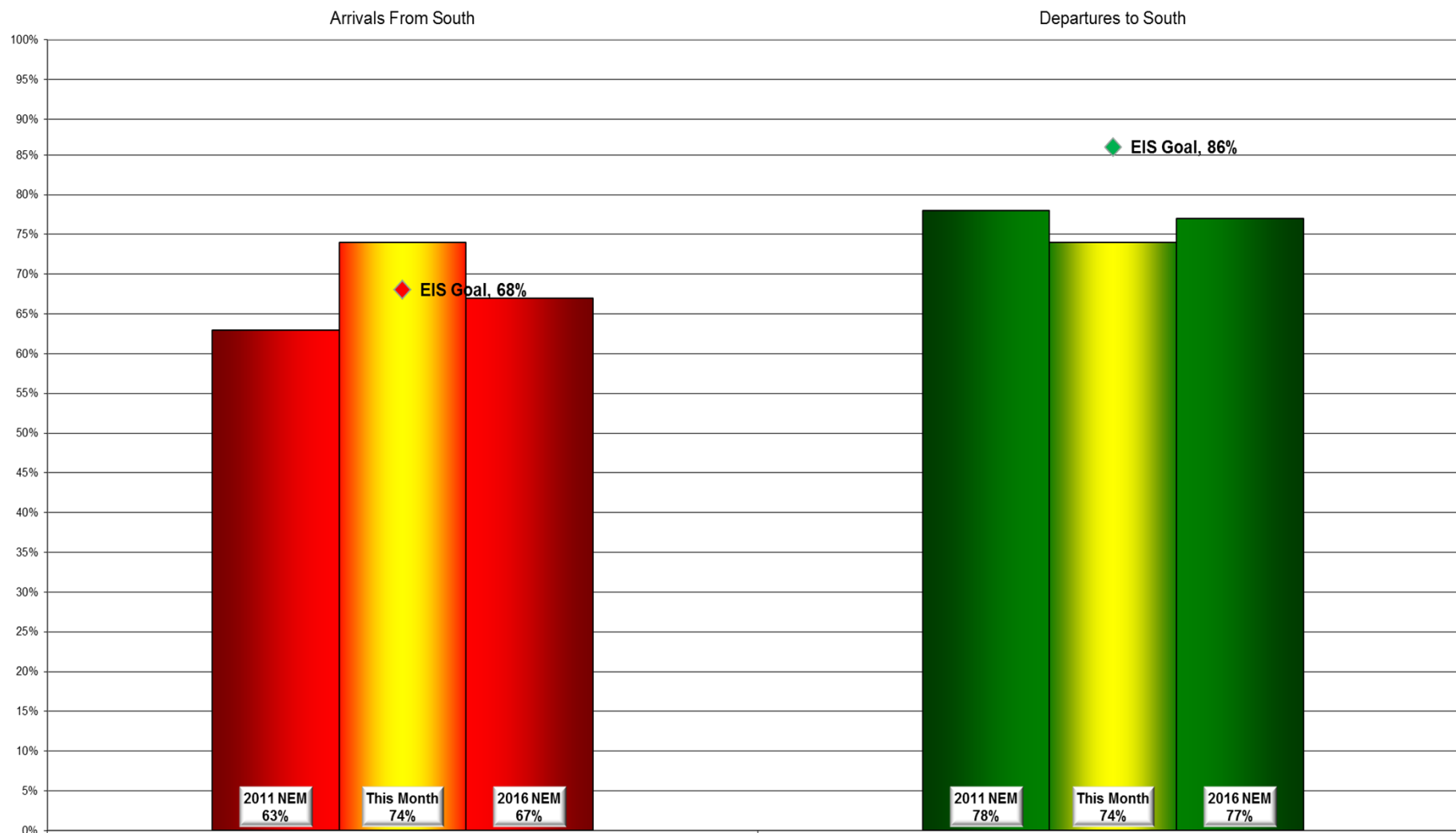
		% of all arrivals from the south										% of all departures to the south											
Date	Day	* in	Runway #						Unknown	Notes /		** in	Runway #						Unknown	Notes /			
		compliance	11	17L	17R	29	35L	35R	Use				Runway	compliance	11	17L	17R	29	35L			35R	Use
11/01/17	Wed	0%			44	56				0	180@10-13knts,RA	100%			38	62				0			
11/02/17	Thu	1%			45	54			1	0	180-190@9-11knts	77%			32	45			12	11	0		
11/03/17	Fri	93%			3	4			63	30	0		94%			39	55			4	2	0	
11/04/17	Sat																						
11/05/17	Sun																						
11/06/17	Mon	100%							63	37	0		14%			3	11			51	35	0	010-060@5-11knts,RA
11/07/17	Tue	100%							62	38	0		0%							56	44	0	030-040@7-10knts
11/08/17	Wed	98%			2				61	37	0		90%			36	54			4	6	0	
11/09/17	Thu	100%							62	38	0		0%							57	43	0	360-010@8-11knts
11/10/17	Fri	95%				5			61	34	0		96%			39	57			3	1	0	
11/11/17	Sat																						
11/12/17	Sun																						
11/13/17	Mon	98%			1	1			57	41	0		90%			37	53			5	5	0	
11/14/17	Tue	7%			41	52			3	4	0	120@3-4	100%			42	58					0	
11/15/17	Wed	97%			2	1			60	37	0		80%			29	51			7	13	0	260-310@6-9knts
11/16/17	Thu	96%			1	3			54	42	0		94%			37	57			3	3	0	
11/17/17	Fri	0%			43	57					0	150-190@8-16knts,G25	100%			43	57					0	
11/18/17	Sat																						
11/19/17	Sun																						
11/20/17	Mon	84%			5	11			50	34	0		90%			34	56			1	8	1	0
11/21/17	Tue	100%							61	39	0		0%							60	40	0	340-360@9-14knts,G18
11/22/17	Wed	97%			1	2			61	36	0		83%			11	72			13	4	0	020-130@3-4knts
11/23/17	Thu	83%				17			79	4	0		96%			35	61			3	1	0	
11/24/17	Fri	0%			39	61					0	180-220@6-9knts,G21	99%			37	62				1	0	
11/25/17	Sat																						
11/26/17	Sun																						
11/27/17	Mon	90%			6	4			53	37	0		85%			34	51			11	4	0	early departures
11/28/17	Tue	0%			40	60					0	120-210@3-4knts,G16	100%			31	69					0	
11/29/17	Wed	93%			4	3			58	35	0		85%			34	51			11	4	0	early departures
11/30/17	Thu	94%			5	1			58	36	0		83%			34	49			11	6	0	early departures

Preferred Flow

DATIS Reported Conditions Indicate
Support for Non-Preferred Flow

DATIS Reported Conditions Do Not Indicate
Support for Non-Preferred Flow

Monthly Contraflow December 1-29, 2017



Daily Runway Use Summary – December 2017

(from 10:00 PM date list in first column to 7:00 AM the following morning)

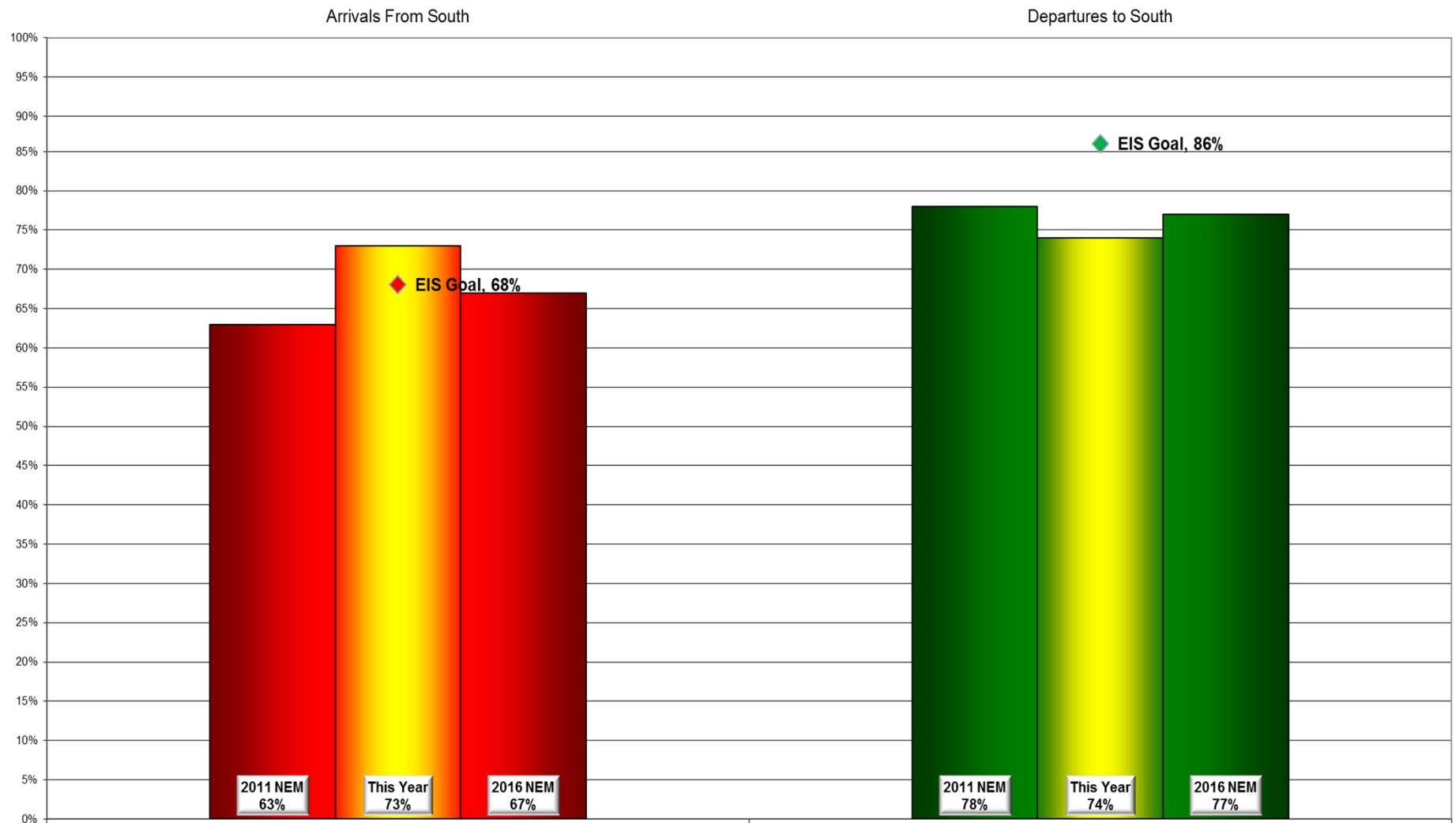
		% of all arrivals from the south										% of all departures to the south													
Date	Day	* in	Runway #						Unknown	Notes /	Runway	Use	Comments	** in	Runway #						Unknown	Notes /	Runway	Use	Comments
		compliance	11	17L	17R	29	35L	35R	Runway						compliance	11	17L	17R	29	35L	35R				
12/01/17	Fri	96%			2	2			57	39	0		93%			38	55			3	4	0			
12/02/17	Sat																								
12/03/17	Sun																								
12/04/17	Mon	0%			51	49					0	170-190@15-17knts,G32,R	100%			33	67					0			
12/05/17	Tue	95%			4	1			59	36	0		81%			28	53			12	7	0	early departures		
12/06/17	Wed	93%			2	5			56	37	0		84%			33	51			9	7	0	early departures		
12/07/17	Thu	9%			35	56			5	4	0	290-320@3-4knts	98%			33	65			1	1	0			
12/08/17	Fri	89%			3	8			53	36	0		95%			35	60			3	2	0			
12/09/17	Sat																								
12/10/17	Sun																								
12/11/17	Mon	100%							60	40	0		1%				1			61	38	0	290-320@13-15knts,G27		
12/12/17	Tue	88%			3	9			55	33	0		88%			33	55			7	5	0			
12/13/17	Wed	99%				1			61	38	0		0%							61	39	0	290-320@9-16knts,G25		
12/14/17	Thu	93%			2	5			56	37	0		87%			32	55			7	6	0			
12/15/17	Fri	88%			5	7			55	33	0		95%			38	57				5	0			
12/16/17	Sat																								
12/17/17	Sun																								
12/18/17	Mon	0%			50	50					0	210-230@6-10knts,G16	100%			35	65					0			
12/19/17	Tue	88%			7	5			51	37	0		78%			27	51			16	6	0	early departures		
12/20/17	Wed	86%			10	4			50	36	0		79%			30	49			13	8	0	early departures		
12/21/17	Thu	0%			42	58					0	180-200@8-10knts,G20	99%			38	61			1		0			
12/22/17	Fri	55%			19	26			38	17	0	170-360@5-8knts,RA	5%				5			61	34	0	360-010@12-15knts,G24,RA		
12/23/17	Sat																								
12/24/17	Sun																								
12/25/17	Mon	87%			13				65	22	0		92%			33	59			7	1	0			
12/26/17	Tue	100%							61	39	0		0%							62	38	0	360-010@9-12knts		
12/27/17	Wed	94%			5	1			51	43	0		93%			34	59			3	4	0			
12/28/17	Thu	98%			1	1			59	39	0		85%			31	54			11	4	0	early departures		
12/29/17	Fri	93%			5	2			61	32	0		95%			33	62			3	2	0			

Preferred Flow

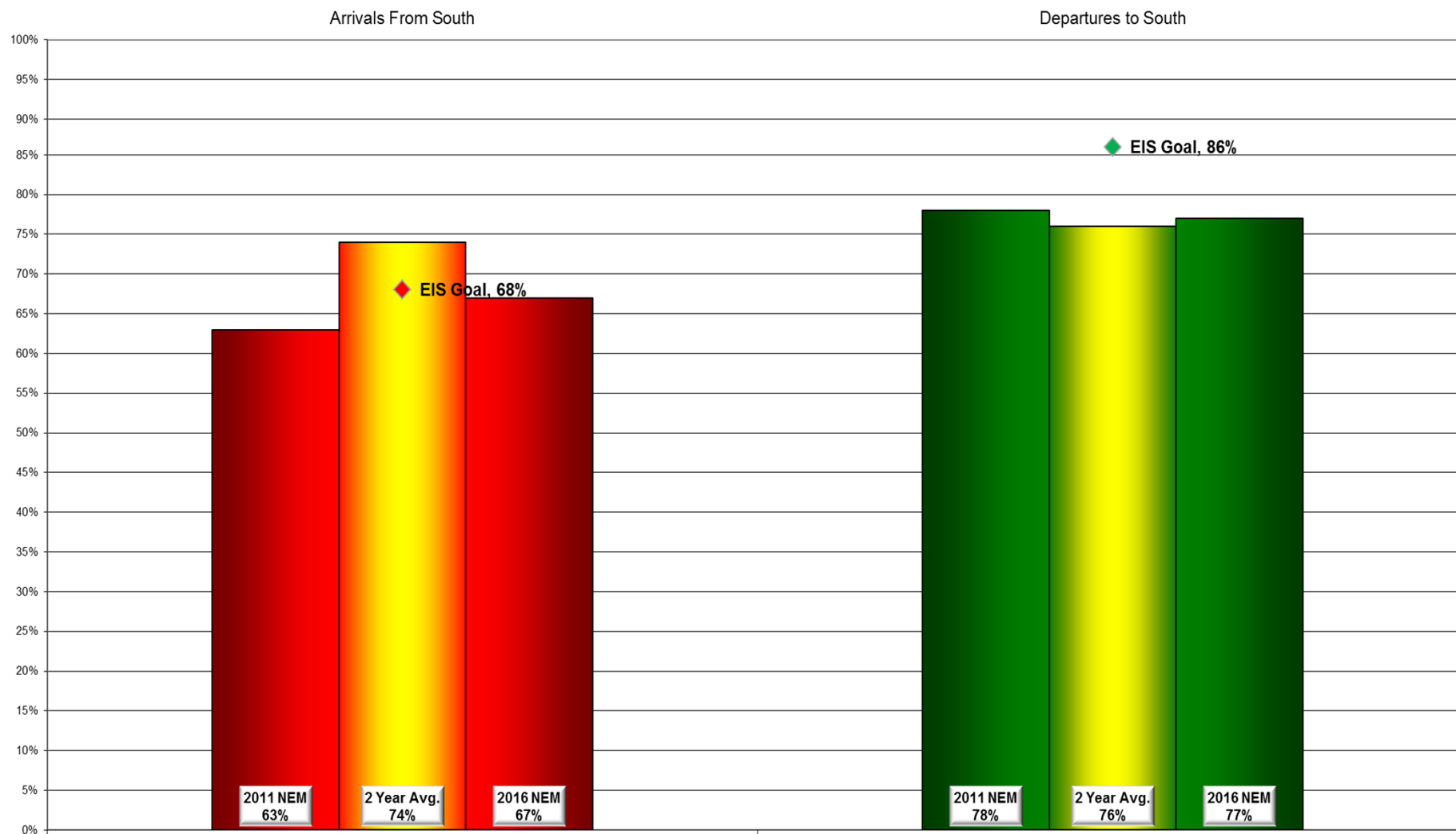
DATIS Reported Conditions Indicate
Support for Non-Preferred Flow

DATIS Reported Conditions Do Not Indicate
Support for Non-Preferred Flow

Contraflow This Year As of December 29, 2017



Contraflow 2 Year Average January 2016 - December 2017



Year-to-Year by Month Percent* Contraflow

Arrivals From the South (Goal 68%)										Departures to the South (Goal 86%)									
	2010	2011	2012	2013	2014	2015	2016	2017	Avg		2010	2011	2012	2013	2014	2015	2016	2017	Avg
Jan	94%	91%	62%	72%	51%	76%	69%	65%	73%	Jan	54%	71%	80%	65%	81%	76%	69%	61%	70%
Feb	90%	73%	69%	77%	72%	66%	80%	58%	73%	Feb	71%	63%	74%	78%	71%	76%	67%	77%	72%
Mar	80%	52%	61%	87%	60%	71%	63%	79%	69%	Mar	82%	72%	96%	77%	77%	66%	77%	62%	76%
Apr	57%	47%	78%	60%	67%	53%	86%	56%	63%	Apr	84%	83%	76%	89%	83%	77%	73%	80%	81%
May	56%	69%	72%	46%	60%	75%	62%	75%	64%	May	87%	85%	81%	85%	92%	80%	80%	80%	84%
Jun	66%	61%	79%	76%	75%	57%	79%	74%	71%	Jun	96%	93%	87%	80%	91%	91%	83%	93%	89%
Jul	61%	91%	62%	74%	79%	74%	59%	85%	73%	Jul	90%	88%	92%	88%	85%	80%	91%	85%	87%
Aug	59%	82%	49%	84%	61%	86%	76%	79%	72%	Aug	92%	91%	91%	92%	92%	91%	90%	90%	91%
Sep	70%	85%	55%	86%	85%	95%	88%	85%	81%	Sep	73%	64%	92%	87%	86%	73%	93%	31%	75%
Oct	80%	88%	62%	87%	75%	86%	81%	81%	80%	Oct	78%	63%	78%	89%	79%	74%	81%	82%	78%
Nov	85%	55%	84%	73%	78%	59%	74%	69%	72%	Nov	77%	72%	81%	83%	62%	88%	77%	75%	77%
Dec	67%	70%	64%	58%	78%	55%	75%	74%	68%	Dec	78%	65%	67%	71%	68%	79%	62%	74%	71%
Avg	72%	72%	66%	73%	70%	71%	74%	73%		Avg	80%	76%	83%	82%	81%	79%	79%	74%	

*Number is percentage of all operations between 10:00 PM - 7:00 AM

NOISE COMMENT REPORT



November 2017

Comments (SDF/LOU)

November 2017

Street	Zip Code	Time Received	Time	Airport	Disturbance Type	CNF Quad	Status	Operation or Comment Type ¹	Deviation Type ²	Comments
Wolfe AV	40217	2017-11-02 09:01:00	2017-11-02 09:01:00	SDF	Other	NE	Investigated	Standard	None	I am calling to check the status of the QuieterHome Program. Is it possible to get a copy of the application we submitted? Also, are there any updates to possibly revisiting our area?
N 46th St	40212	2017-11-07 07:13:00	2017-11-07 04:00:00	SDF	Other	NW	Investigated	Non-Standard	Weather	A "contraflow" pattern is implemented at night (10 p.m. to 7 a.m.) so that if weather permits, aircraft arrive from the south for a specified time and then depart to the south for the remaining portion. This keeps noise south of the airport and over less populated areas. I would like to file under the Freedom of Information Act the reason(s) behind the change or disregard of the above stated rule in the early morning hours between 4 a.m. thru 7:00 a.m. November 7, 2017.

1. **Standard:** Indicates the "Most Preferred" runway configuration was being utilized at the time of the comment.
Non Standard: Indicates that a "Lesser Preferred" runway configuration was being utilized at the time of the comment.
QHP: QuieterHome Program

2. This column is used to indicate the conditions which most likely necessitated a deviation from the standard procedures.

Comments (SDF/LOU)

November 2017

Street	Zip Code	Time Received	Time	Airport	Disturbance Type	CNF Quad	Status	Operation or Comment Type ¹	Deviation Type ²	Comments
N 46th St	40212	2017-11-07 05:03:00	2017-11-07 05:03:00	SDF	Over Use of Runway	NW	Investigated	Non-Standard	Weather	Again this year there is a marked increase in the number of flights that are directed from the normal traffic pattern of north/south to what sounds and appears to be a westerly pattern straight across my house beginning at 4:00 a.m. until after 5:00 for both departure and return. This is unacceptable the weather is not inclement on this day of November the 7th light rain and I really don't give a shit if your scheduled volume of scheduled traffic is too heavy to support the agreed upon course of flight. Change the frigging schedule! You made my life a living nightmare for years when I lived on Springdale Drive off of Preston now that I live at 46th and Duncan I find myself being vibrated awake by the drone of planes flying over my home. Unacceptable! Please be advised the Airport Authority is not responsible for the airline operations. Each airline is operated separately. The airlines, along with other companies and agencies, lease space from the Airport Authority to conduct business at the airports. Since you have named your group the Airport Authority could you tell me what you have authority over? Authority implies the power or right to give orders, make decisions, and enforce obedience: "he had absolute authority over his subordinates." So I cannot but help but wonder what in the world you are doing on noise abatement?
Bradley Ave	40217	2017-11-08 10:20:00	2017-11-08 10:20:00	SDF	Over Use of Runway	NE	Investigated	Non-Standard	Weather	Why are the planes taking off to north? They have been going north yesterday and today.

1. **Standard:** Indicates the "Most Preferred" runway configuration was being utilized at the time of the comment.
Non Standard: Indicates that a "Lesser Preferred" runway configuration was being utilized at the time of the comment.
QHP: QuieterHome Program

2. This column is used to indicate the conditions which most likely necessitated a deviation from the standard procedures.

Comments (SDF/LOU)

November 2017

Street	Zip Code	Time Received	Time	Airport	Disturbance Type	CNF Quad	Status	Operation or Comment Type ¹	Deviation Type ²	Comments
Budd Rd	47150	2017-11-08 17:31:00	2017-11-08 17:31:00	SDF	Constant Noise	SI	Investigated	Non-Standard	Weather	This is Phil from Indiana. We have talked in the past about the incredibly loud noise from the UPS planes flying over here. I just wanted to see if you have pushed that up the ladder any? It has gotten absolutely ridiculous, now it's crazy. I now have my neighbors screaming and yelling about how loud they are. Especially yesterday morning but it has been going on and on. I come home for lunch and they are going over top of my house, I come home in the evening and try to have dinner quietly and they are coming over top of my house and I mean non-stop. From the wee hours of the morning to all night long. I do have a contact person in Washington DC at the FAA I was going to send them an email but I wanted to talk with you first to see if maybe you would really actually look into this first about how loud it is, see how bad it is, something. Just getting back with you to see if anything has been done to try and divert these somewhat.
Fetter Ave	40217	2017-11-18 13:14:00	2017-11-18 13:14:00	SDF	Too Much Noise	NE	Investigated	Standard	None	I live 20 feet from neighbors that received complete home abatement and I received none. When is the review for abatement in my area going to happen? It is getting louder and louder. If I can hear even with ear surgery scheduled for 11/29 I know it's gotten worse not better.

1. **Standard:** Indicates the "Most Preferred" runway configuration was being utilized at the time of the comment.
Non Standard: Indicates that a "Lesser Preferred" runway configuration was being utilized at the time of the comment.
QHP: QuieterHome Program

2. This column is used to indicate the conditions which most likely necessitated a deviation from the standard procedures.

Comments (SDF/LOU)

November 2017

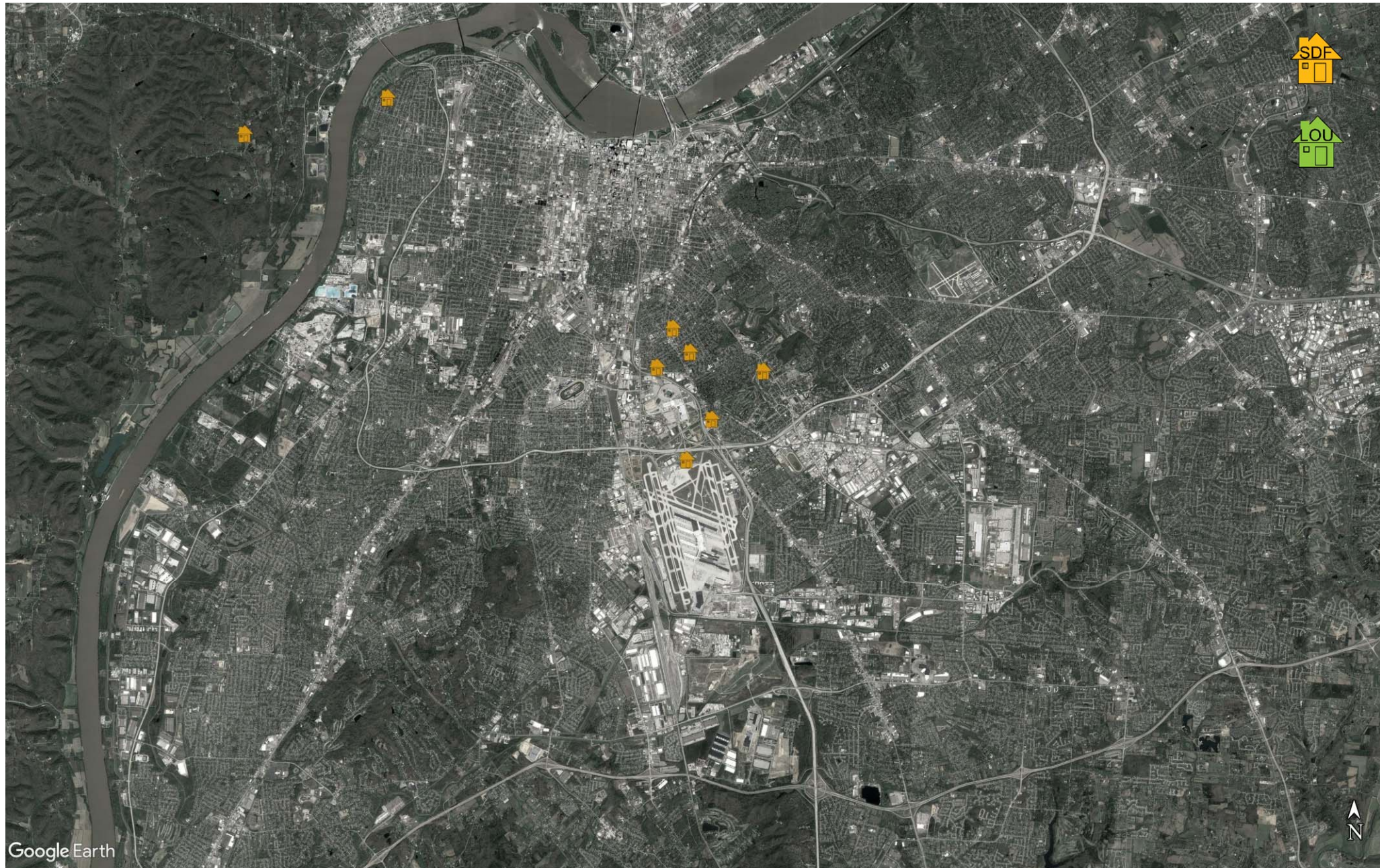
Street	Zip Code	Time Received	Time	Airport	Disturbance Type	CNF Quad	Status	Operation or Comment Type ¹	Deviation Type ²	Comments
Administration Dr	40209	2017-11-26 16:46:00	2017-11-26 16:46:00	SDF	Other	SW	Investigated	Standard	None	Can you send me the information on what the qualifications are for the airport noise reduction program for homeowners? Also, are you still having that meeting Monday night?
Melford AV	40217	2017-11-28 23:55:00	2017-11-28 23:55:00	SDF	Noise At Wrong Time	NE	Investigated	Non-Standard	Weather	Why are the UPS planes coming in from the north this evening? Weather conditions are 0-1 mph and skies are clear. I also want to know how I can get the noise over my house measured. I believe I qualify for the noise abatement program because of the noise level at night. I am on Melford Ave just east of Alexander. The homes to the west of Alexander got retrofitted, but not the ones on my side. Could you please provide a reason?
Fincastle Rd	40213	2017-11-29 09:57:00	2017-11-29 09:57:00	SDF	Other	NE	Investigated	Standard	None	I am calling for Fincastle Heights Mutual Ownership close to the airport. I would like to speak with you about the noise abatement program and see what we might be able to come up with. Please give me a call and I can explain more to you. I know you met recently but I did not get to make the meeting.
							Received	LRAA	9	

1. **Standard:** Indicates the “Most Preferred” runway configuration was being utilized at the time of the comment.
Non Standard: Indicates that a “Lesser Preferred” runway configuration was being utilized at the time of the comment.
QHP: QuieterHome Program

2. This column is used to indicate the conditions which most likely necessitated a deviation from the standard procedures.

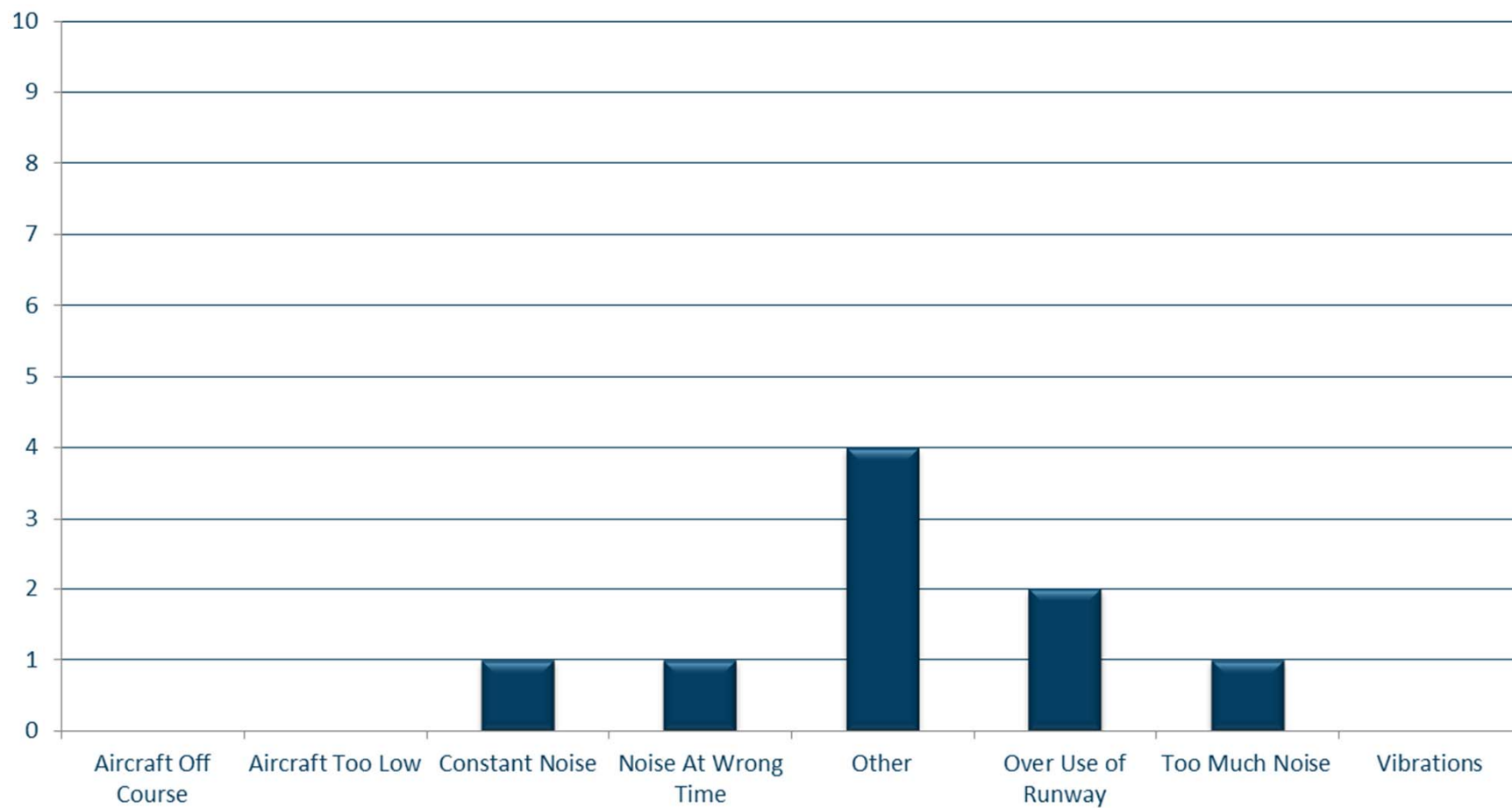
Comment Location (SDF/LOU)

November 2017



Comment Type (SDF and LOU)

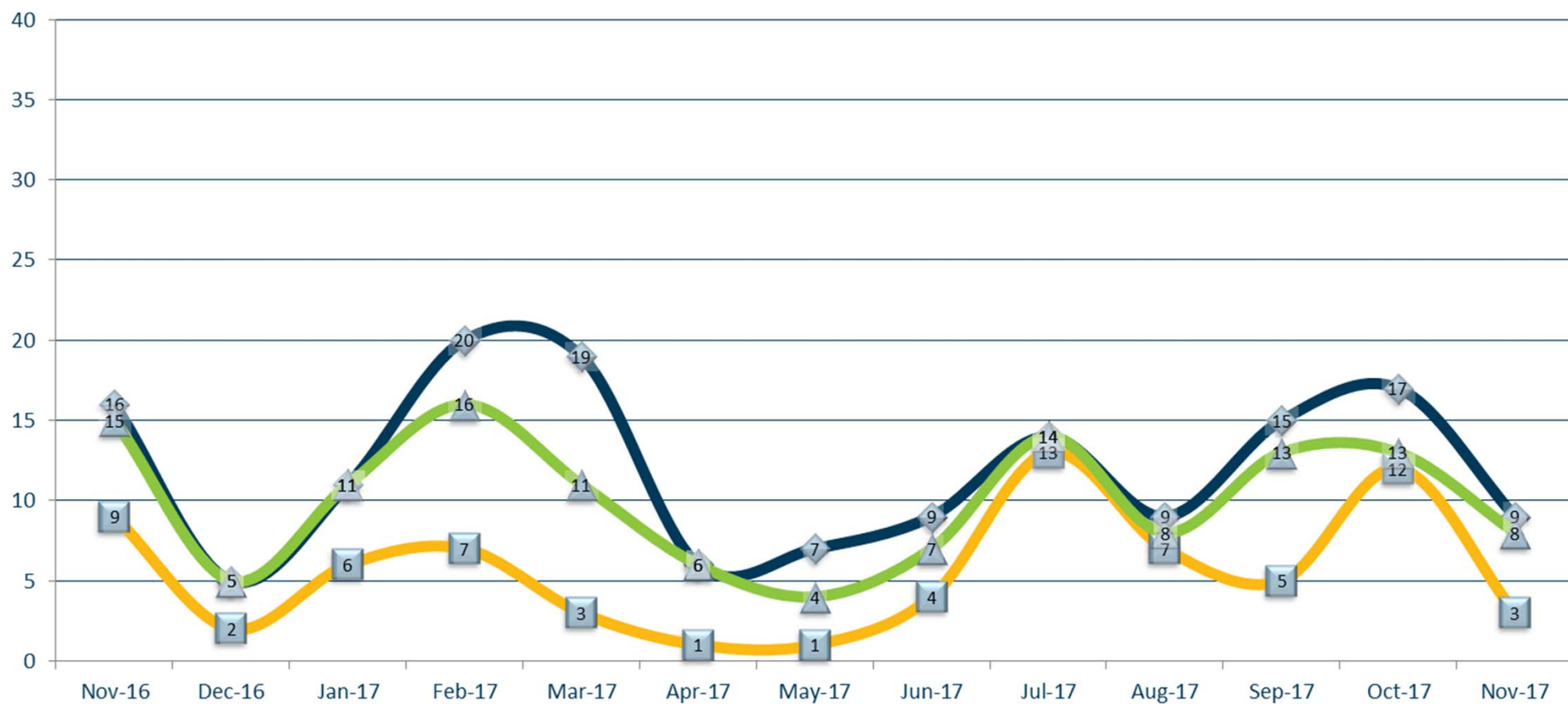
November 2017



New Address/Comments per Month (SDF and LOU)

November 2017

◆ Total Comments ■ New Callers ▲ Individual Callers



NOISE COMMENT REPORT



December 2017

Comments (SDF/LOU)

December 2017

Street	Zip Code	Time Received	Time	Airport	Disturbance Type	CNF Quad	Status	Operation or Comment Type ¹	Deviation Type ²	Comments
W Garrett St	40214	2017-12-06 12:41:00	2017-12-06 12:41:00	SDF	Other	NW	Investigated	Standard	None	I spoke to you a year or so ago. I got a letter in the mail from Representative Horlander about noise control at the airport. At the time I was like 8 houses away from the area. I just wanted to check in again and see where things are at.
Audubon Pkwy	40213	2017-12-07 10:50:00	2017-12-07 03:00:00	SDF	Too Much Noise	NE	Investigated	Standard	None	The noise in our neighborhood (Audubon Park) is intolerable lately. My house is well insulated, and all windows were replaced, but yesterday it sounded like a helicopter was hovering over our house. It woke us all in the wee hours of the morning. My dogs were going nuts. I could hear outside dogs barking everywhere. I'm used to being disturbed this time of year by the UPS planes (I wake up braced for impact sometimes. They actually shake my house. Are they flying too low? A different direction? I wish I knew!) But this noise is different. It is CONSTANT. Someone told me this happens upon northbound departure of cargo and passenger jet traffic. This is only supposed to happen when EXCESSIVE NORTH WIND prevents flying the other way. But those conditions yesterday were clear, and the wind was from the SOUTHWEST at 7 mph. Has something changed?
Bourbon Ave	40213	2017-12-07 14:38:00	2017-12-07 14:38:00	SDF	Other	NE	Investigated	Non-Standard	None	I recently moved to the area and was advised by the prior owner that funds may be available to help with windows due to the noise. Is there such a program?

1. **Standard:** Indicates the "Most Preferred" runway configuration was being utilized at the time of the comment.
Non Standard: Indicates that a "Lesser Preferred" runway configuration was being utilized at the time of the comment.
QHP: QuieterHome Program

2. This column is used to indicate the conditions which most likely necessitated a deviation from the standard procedures.

Comments (SDF/LOU)

December 2017

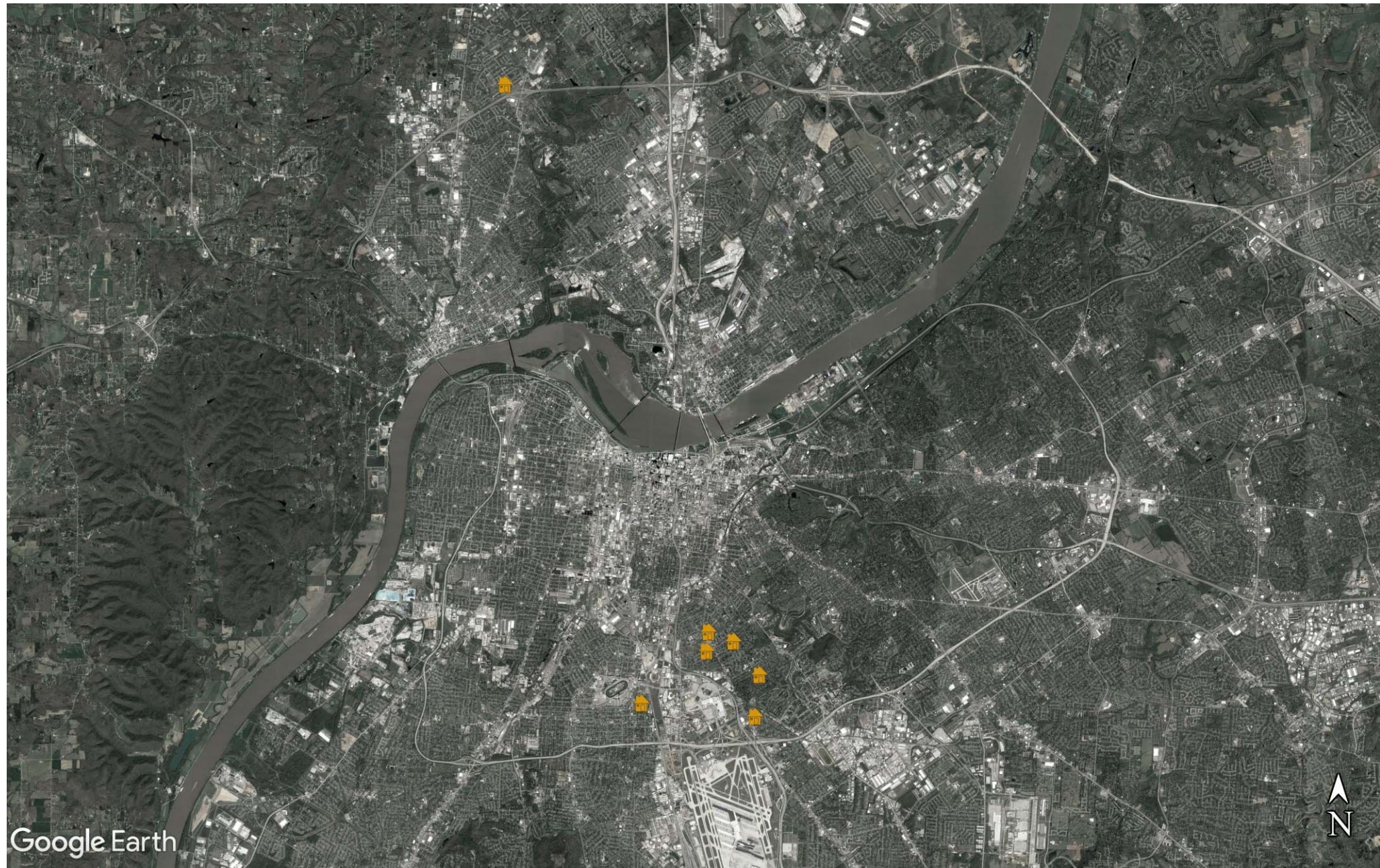
Street	Zip Code	Time Received	Time	Airport	Disturbance Type	CNF Quad	Status	Operation or Comment Type ¹	Deviation Type ²	Comments
Gray Fox Dr	47150	2017-12-08 00:06:00	2017-12-08 00:06:00	SDF	Noise At Wrong Time	SI	Investigated	Non-Standard	None	Explain why I'm having plane after plane flying over my house at 12 a.m. when all planes are to arrive and take off to the south with permitting weather. Picture is from the National Weather Service of the conditions at Standiford Field. 5 mph west wind does not create tail wind or exceed safe wind speeds if it was a tail wind from the south. It definitely doesn't create a head wind for flying in from the north.
Ridgewood Ave	40217	2017-12-08 05:29:00	2017-12-08 05:29:00	SDF	Other	NE	Investigated	Standard	None	I am inquiring about a program my brother recommended to me about noise pollution in the neighborhood related to airplane traffic. The location of the address is Ridgewood Ave 40217. He explained the airport authority came to his house to test the decibels of the noise and he qualified for a program to replace his window. I am wondering based on the neighborhood location if we would qualify to get a test for the program? If you are not the right contact for the program, can you point me in the right direction?
Fetter Ave	40217	2017-12-14 10:11:00	2017-12-14 10:11:00	SDF	Other	NE	Investigated	Standard	None	Are there any plans to seek noise mitigation funds of the newly affected homes included in the approved NEMs?
Colin Ave	40217	2017-12-24 06:51:00	2017-12-24 06:51:00	SDF	Other	NE	Investigated	Standard	None	I'm trying to figure out if my house is in a zone that qualifies for the noise compatibility program. Do you know where I can find information regarding the zones and what entitlements, if any, I would qualify?
							Received	LRAA	7	

1. **Standard:** Indicates the "Most Preferred" runway configuration was being utilized at the time of the comment.
Non Standard: Indicates that a "Lesser Preferred" runway configuration was being utilized at the time of the comment.
QHP: QuieterHome Program

2. This column is used to indicate the conditions which most likely necessitated a deviation from the standard procedures.

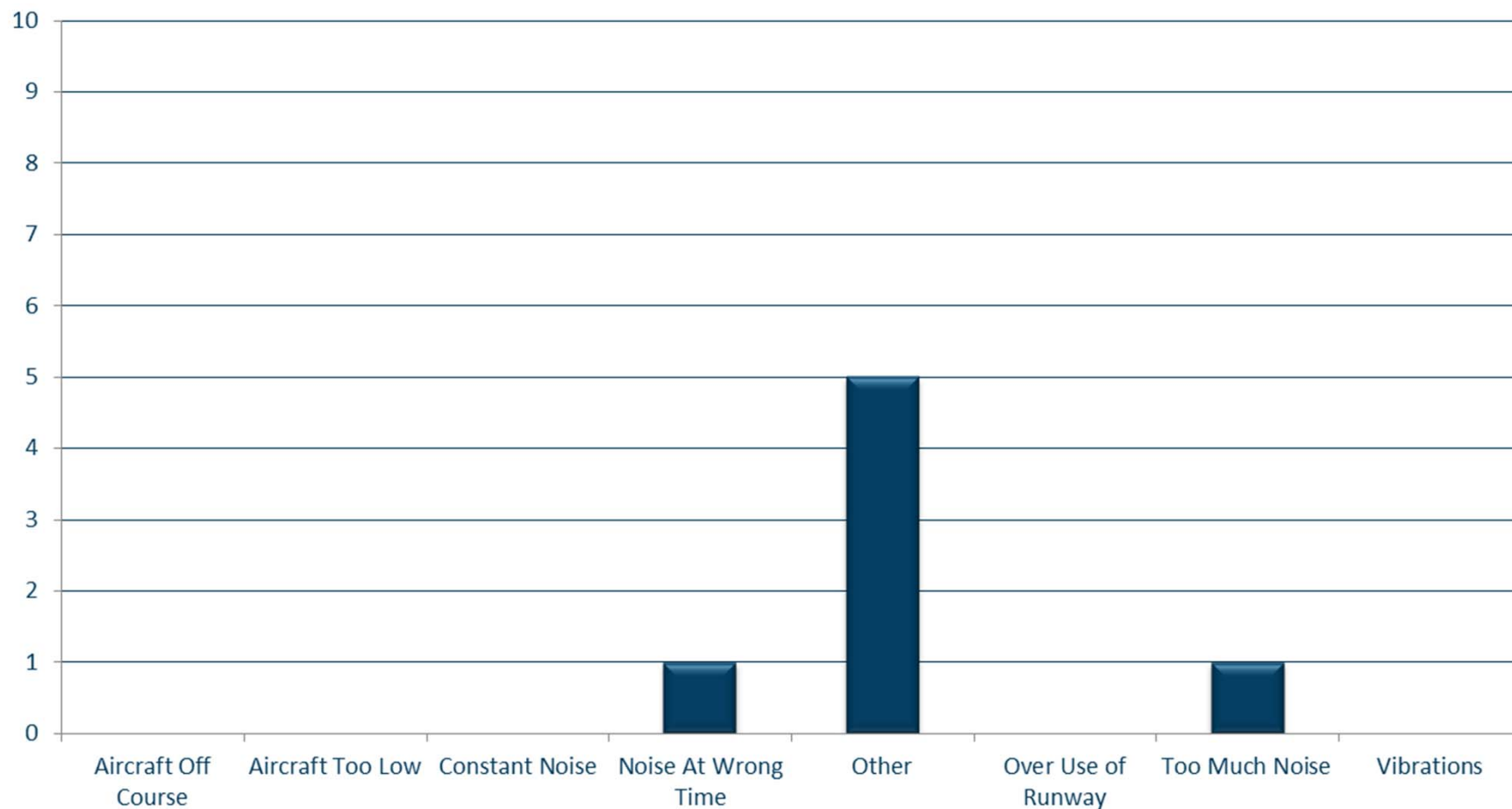
Comment Location (SDF/LOU)

December 2017



Comment Type (SDF and LOU)

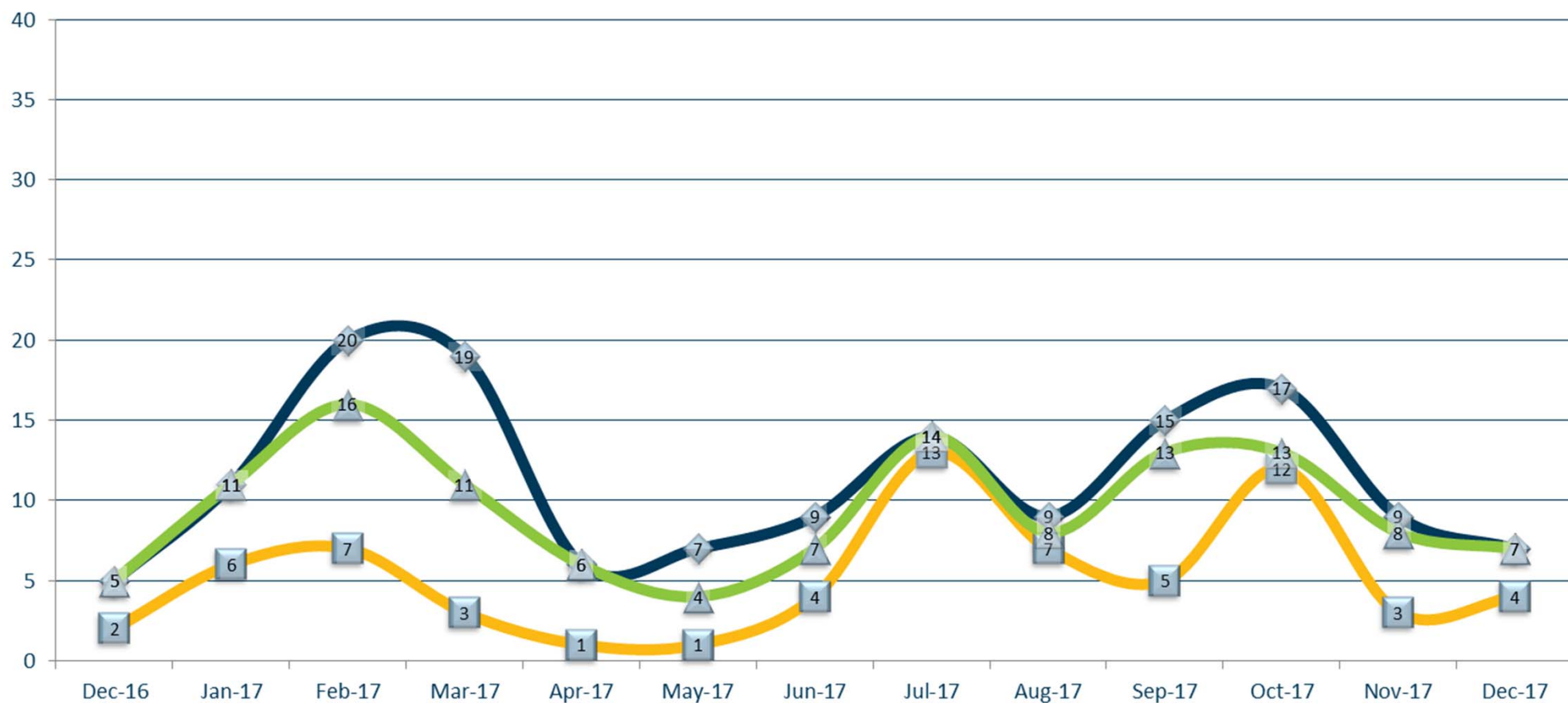
December 2017

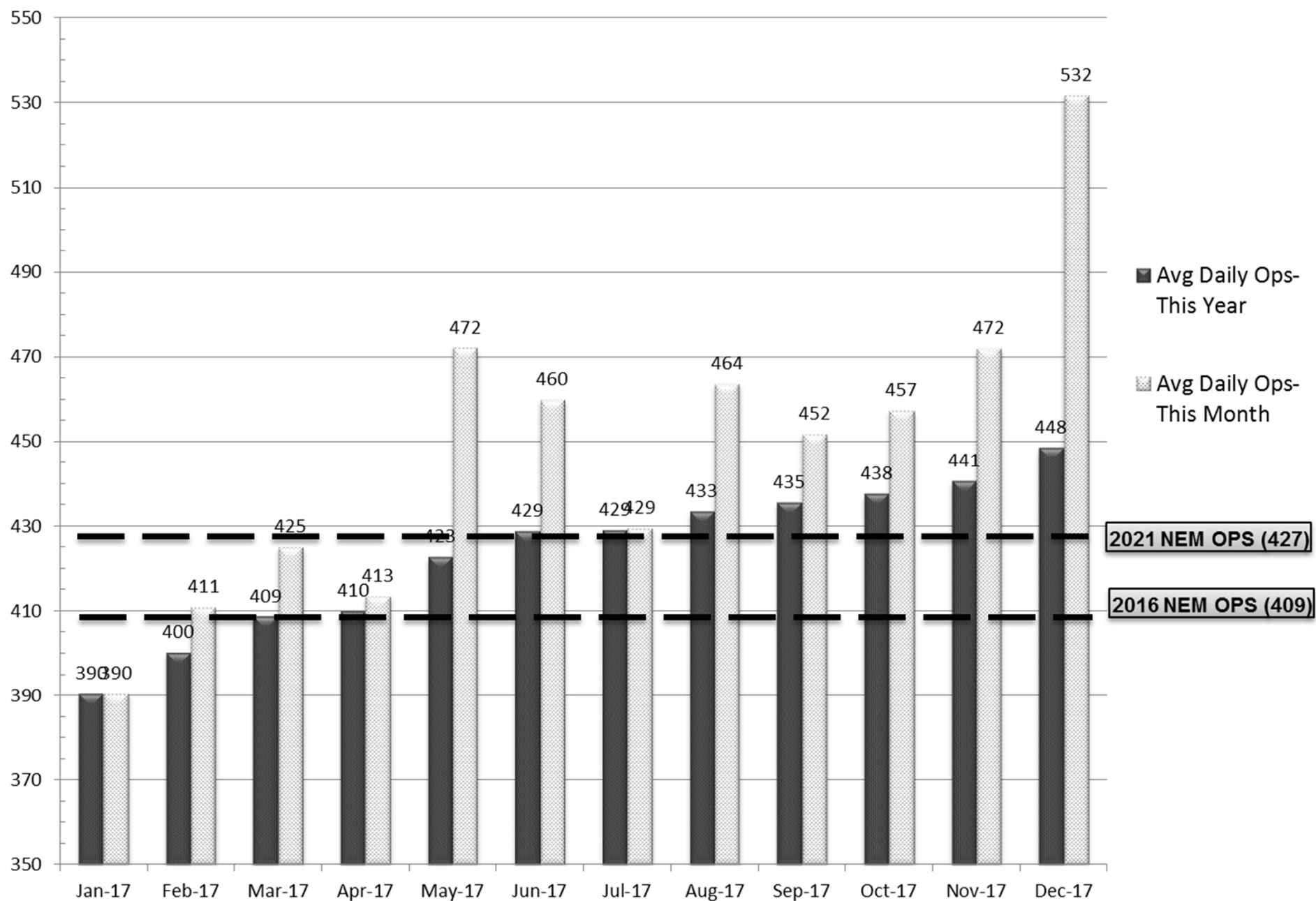


New Address/Comments per Month (SDF and LOU)

December 2017

◆ Total Comments ■ New Callers ▲ Individual Callers





Source: Louisville <http://www.flylouisville.com/regional-airport-authority/reports-and-statistics/>

Daily Runway Use Uncorrected (SDF) November 2017

Flow	Time	Wed 11/1	Thu 11/2	Fri 11/3	Sat 11/4	Sun 11/5	Mon 11/6	Tue 11/7	Wed 11/8	Thu 11/9	Fri 11/10	Sat 11/11	Sun 11/12	Mon 11/13	Tue 11/14	Wed 11/15	Thu 11/16	Fri 11/17	Sat 11/18	Sun 11/19	Mon 11/20	Tue 11/21	Wed 11/22	Thu 11/23	Fri 11/24	Sat 11/25	Sun 11/26	Mon 11/27	Tue 11/28	Wed 11/29	Thu 11/30	Time
North Flow	0:00																															0:00
	0:30																															0:30
	1:00																															1:00
	1:30																															1:30
	2:00																															2:00
	2:30																															2:30
South Flow	3:00																															3:00
	3:30																															3:30
	4:00																															4:00
	4:30																															4:30
	5:00							XXX																								5:00
	5:30																															5:30
	6:00																															6:00
	6:30																															6:30
	7:00							XXX																								7:00
	7:30																															7:30
North Flow	9:30																															9:30
	10:00																															10:00
	10:30																															10:30
	11:00																															11:00
	11:30																															11:30
	12:00																															12:00
South Flow	13:00																															13:00
	13:30																															13:30
	14:00																															14:00
	14:30																															14:30
	15:00																															15:00
	15:30																															15:30
	16:00																															16:00
	16:30																															16:30
	17:00																															17:00
	17:30																															17:30
	18:00																															18:00
	18:30																															18:30
	19:00																															19:00
North Flow	22:00																															22:00
	22:30																															22:30
	23:00																															23:00
	23:30																															23:30
Flow	Time	Wed 11/1	Thu 11/2	Fri 11/3	Sat 11/4	Sun 11/5	Mon 11/6	Tue 11/7	Wed 11/8	Thu 11/9	Fri 11/10	Sat 11/11	Sun 11/12	Mon 11/13	Tue 11/14	Wed 11/15	Thu 11/16	Fri 11/17	Sat 11/18	Sun 11/19	Mon 11/20	Tue 11/21	Wed 11/22	Thu 11/23	Fri 11/24	Sat 11/25	Sun 11/26	Mon 11/27	Tue 11/28	Wed 11/29	Thu 11/30	Time

Preferred Flow

DATIS Reported Conditions Indicate Support for Non-Preferred Flow

DATIS Reported Conditions Do Not Indicate Support for Non-Preferred Flow

South Flow is Preferred Flow from 09:30 Saturday - 09:30 Monday

XXX Complaint

Source: Louisville International Airport
Aircraft Flight Tracking and Noise Management System (AFTNMS)

Daily Runway Use (SDF)

Tower Comments November 2017

Day	Date	Time	Comment
Wed	1-Nov-17		
Thu	2-Nov-17		
Fri	3-Nov-17	0730-0900	Wind 01011G18
Fri	3-Nov-17	1730-2130	Wind 0410 wet runways
Sat	4-Nov-17		
Sun	5-Nov-17		
Mon	6-Nov-17	1530-1730	Wind 0210
Tue	7-Nov-17	1930-2130	Wind 0212
Wed	8-Nov-17	1800-1830	Wind 0110, went south @ 1955
Thu	9-Nov-17	1530-1930	Log shows south, north @ 1630 wind 3112G18
Fri	10-Nov-17	1300-2130	Wind 0111, 3610
Sat	11-Nov-17		
Sun	12-Nov-17	1730-2030	Wind 2908 wet runways
Mon	13-Nov-17	1300-1500	Wind 0209
Tue	14-Nov-17	1130-1230	TWY B construction
Tue	14-Nov-17	2200-0000	Tailwind component & go-arounds
Wed	15-Nov-17	0000-0230	Tailwind component & go-arounds
Wed	15-Nov-17	1130-1230	Wind 1709
Thu	16-Nov-17	0600-0700	Wind 3111
Thu	16-Nov-17	0830-0900	Wind 3311
Thu	16-Nov-17	1300-1400	Wind 0109
Fri	17-Nov-17	0930-1230	Wind 1211
Sat	18-Nov-17		
Sun	19-Nov-17		
Mon	20-Nov-17		
Tue	21-Nov-17		
Wed	22-Nov-17	1300-1430	Wind 3608, went south @1609
Wed	22-Nov-17	1900-2130	Wind 3610
Thu	23-Nov-17	0930-1230	Valid reason not documented (RH)
Fri	24-Nov-17		
Sat	25-Nov-17		
Sun	26-Nov-17	0000-0400	Wind 3309
Mon	27-Nov-17		
Tue	28-Nov-17		
Wed	29-Nov-17		
Thu	30-Nov-17	1300-1530	Wind 3307 wet runways
Thu	30-Nov-17	1730-2130	Wind 3309.

Daily Runway Use Uncorrected (SDF) December 2017

Flow	Time	Fri 12/1	Sat 12/2	Sun 12/3	Mon 12/4	Tue 12/5	Wed 12/6	Thu 12/7	Fri 12/8	Sat 12/9	Sun 12/10	Mon 12/11	Tue 12/12	Wed 12/13	Thu 12/14	Fri 12/15	Sat 12/16	Sun 12/17	Mon 12/18	Tue 12/19	Wed 12/20	Thu 12/21	Fri 12/22	Sat 12/23	Sun 12/24	Mon 12/25	Tue 12/26	Wed 12/27	Thu 12/28	Fri 12/29	Sat 12/30	Sun 12/31	Time
North Flow	0:00								XXX																								0:00
	0:30																																0:30
	1:00																																1:00
	1:30																																1:30
	2:00																																2:00
	2:30																																2:30
South Flow	3:00																																3:00
	3:30																																3:30
	4:00																																4:00
	4:30																																4:30
	5:00																																5:00
	5:30																																5:30
	6:00																																6:00
	6:30																																6:30
	7:00																																7:00
	7:30																																7:30
	8:00																																8:00
	8:30																																8:30
North Flow	9:00																																9:00
	9:30																																9:30
	10:00																																10:00
	10:30																																10:30
	11:00																																11:00
	11:30																																11:30
South Flow	12:00																																12:00
	12:30																																12:30
	13:00																																13:00
	13:30																																13:30
	14:00																																14:00
	14:30																																14:30
	15:00																																15:00
	15:30																																15:30
	16:00																																16:00
	16:30																																16:30
	17:00																																17:00
	17:30																																17:30
	18:00																																18:00
North Flow	18:30																																18:30
	19:00																																19:00
	19:30																																19:30
	20:00																																20:00
	20:30																																20:30
	21:00																																21:00
North Flow	21:30																																21:30
	22:00																																22:00
	22:30																																22:30
	23:00																																23:00
North Flow	23:30																																23:30
	0:00																																0:00

Preferred Flow

DATIS Reported Conditions Indicate Support for Non-Preferred Flow

DATIS Reported Conditions Do Not Indicate Support for Non-Preferred Flow

South Flow is Preferred Flow from 09:30 Saturday - 09:30 Monday

XXX Complaint

Source: Louisville International Airport
Aircraft Flight Tracking and Noise Management System (AFTNMS)

Daily Runway Use (SDF)

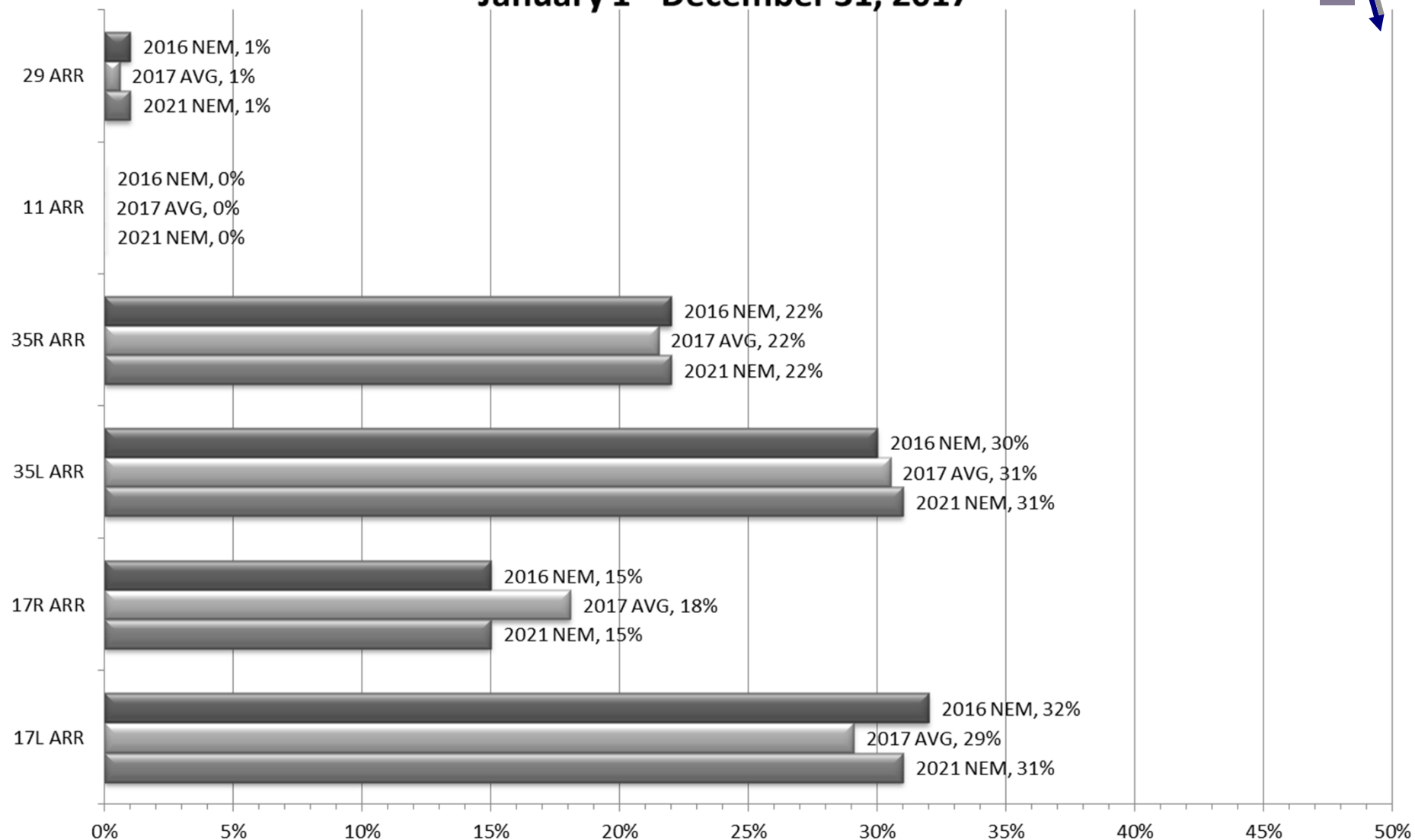
Tower Comments December 2017

Day	Date	Time	Remarks
fri	1-Dec-17		
sat	2-Dec-17		
sun	3-Dec-17		
mon	4-Dec-17		
tue	5-Dec-17	1530-2130	Wind 2912 G18
wed	6-Dec-17	1430-1830	Wind 2912 G16
thu	7-Dec-17	1300-2400	Wind 3111
fri	8-Dec-17	0000-0230	Remained South Flow Aircraft in Range
fri	8-Dec-17	0930-1030	Stayed South Flow due to Volume
sat	9-Dec-17		
sun	10-Dec-17	0100-0600	Wind 3410
mon	11-Dec-17		
tue	12-Dec-17	1830-2130	Wind 3110 G20
wed	13-Dec-17		
thu	14-Dec-17	1300-2130	Wind 3511
fri	15-Dec-17		
sat	16-Dec-17		
sun	17-Dec-17		
mon	18-Dec-17		
tue	19-Dec-17	2100-2130	Wind 2908
wed	20-Dec-17	1700-2130	Wind 0410
thu	21-Dec-17		
fri	22-Dec-17	1300-1400	Due to Volume wind 1908
fri	22-Dec-17	1800-2130	3410 Wet RWYs
sat	23-Dec-17		
sun	24-Dec-17	1630-1800	Wind 2813 G23 - 2918 G31
mon	25-Dec-17	0500-0900	Wind 2713
mqr	25-Dec-17	1300-1900	Wind 2912 G20
tue	26-Dec-17		
wed	27-Dec-17		
thu	28-Dec-17	0800-0900	Wind 0210
fri	29-Dec-17	0930-1230	Winds aloft, plus surface wind 1809
sat	30-Dec-17	0730-0900	Wind 3410
sun	31-Dec-17		

Runway Use (SDF Arrivals)

NEM vs. Actual

January 1 - December 31, 2017

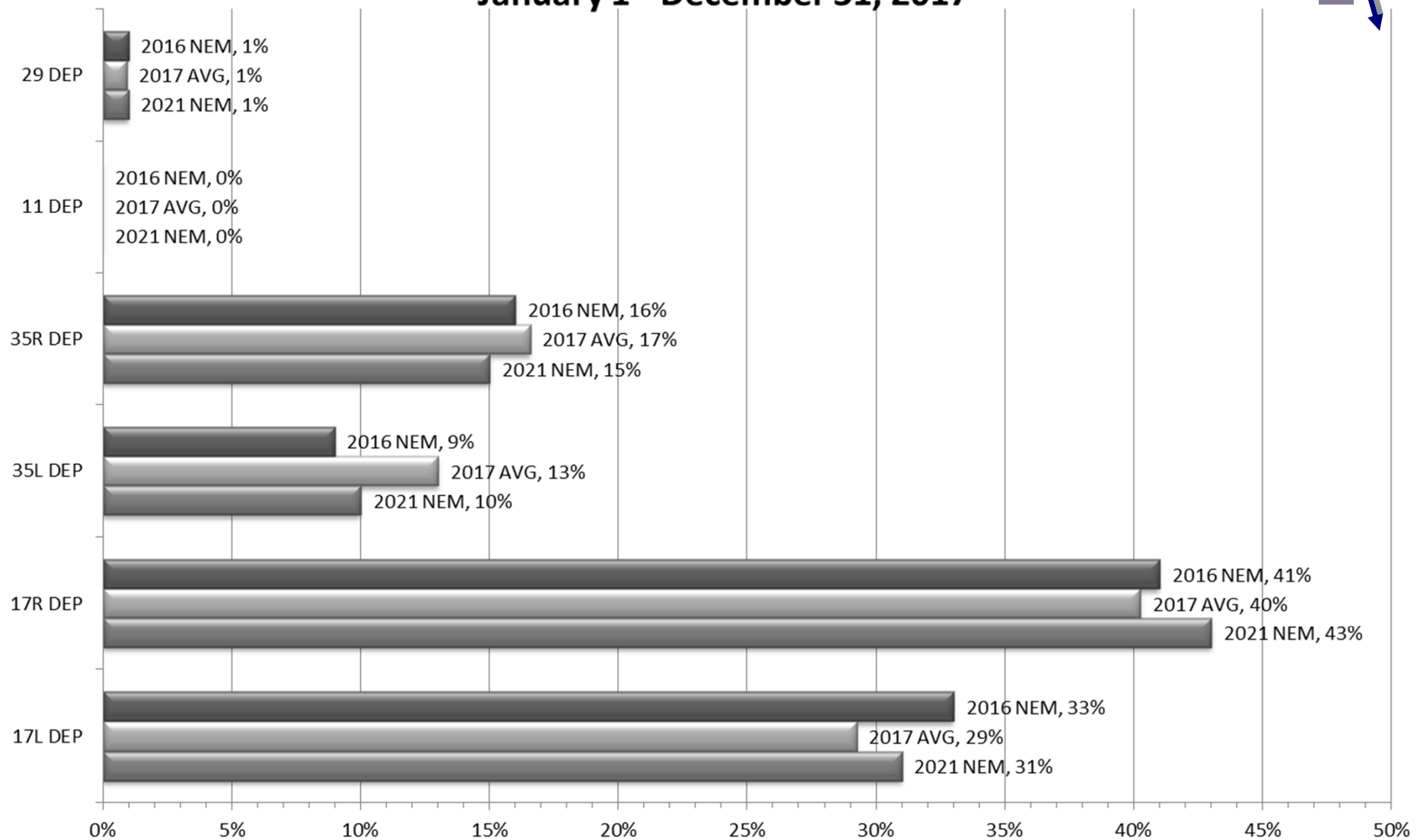


Source: Louisville International Airport
Aircraft Flight Tracking and Noise Management System (AFTNMS)

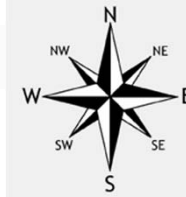
Runway Use (SDF Departures)

NEM vs. Actual

January 1 - December 31, 2017



Source: Louisville International Airport
Aircraft Flight Tracking and Noise Management System (AFTNMS)



Runway Use 0930L-1230L_(SDF)

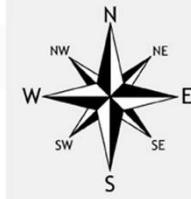
As of December 31, 2017

	Arrival Percentage by Runway							Arrival Count	Departure Percentage by Runway							Departure Count
	11	17L	17R	29	35L	35R	% From South		11	17L	17R	29	35L	35R	% To North	
Jan-16	0	26	22	2	30	20	50	650	0	26	22	3	11	38	49	312
Feb-16	0	17	12	0	49	22	71	738	1	13	14	2	19	51	70	314
Mar-16	0	33	37	0	21	9	30	796	0	31	29	4	9	27	36	396
Apr-16	0	27	17	8	31	17	48	712	1	30	17	6	15	31	46	356
May-16	0	17	25	0	37	21	58	821	0	21	19	4	25	31	56	394
Jun-16	0	9	12	0	49	30	79	816	0	14	9	4	24	49	73	392
Jul-16	0	17	30	1	32	20	52	723	0	17	27	2	14	40	54	394
Aug-16	0	14	46	0	21	19	40	845	0	18	35	1	13	33	46	404
Sep-16	0	14	27	0	37	22	59	856	0	14	22	0	9	55	64	399
Oct-16	0	16	35	0	24	25	49	803	0	19	25	1	0	55	55	393
Nov-16	0	27	31	0	24	18	42	912	0	26	30	0	1	43	44	394
Dec-16	0	9	6	3	52	30	82	1090	0	9	11	3	10	67	77	429
Jan-17	0	17	22	6	32	23	55	871	0	15	17	5	6	57	63	365
Feb-17	0	21	27	0	28	24	52	815	0	23	28	0	3	46	49	363
Mar-17	0	25	16	0	35	24	59	943	0	23	23	0	11	43	54	395
Apr-17	0	16	49	1	22	12	34	836	1	19	38	5	10	27	37	397
May-17	0	28	20	0	30	22	52	1027	0	29	16	0	13	42	55	460
Jun-17	0	29	28	0	16	27	43	960	0	24	34	1	10	31	41	435
Jul-17	0	30	28	0	23	19	42	866	0	28	20	2	6	44	50	377
Aug-17	0	15	24	0	42	19	61	1001	0	20	18	0	10	52	62	453
Sep-17	0	10	6	1	45	38	83	903	0	14	3	2	12	69	81	495
Oct-17	0	21	24	0	29	26	55	936	0	25	18	1	9	47	56	451
Nov-17	0	20	23	0	25	32	57	956	0	19	21	0	9	51	60	439
Dec-17		10	11	0	49	30	79	1064	1	9	13	1	16	60	76	510
Monthly Avg.	0	20	24	1	33	23	56		0	20	21	2	11	45	56	

Source: Louisville International Airport
Aircraft Flight Tracking and Noise Management System (AFTNMS)

Gate Compliance by Runway

As of December 31, 2017

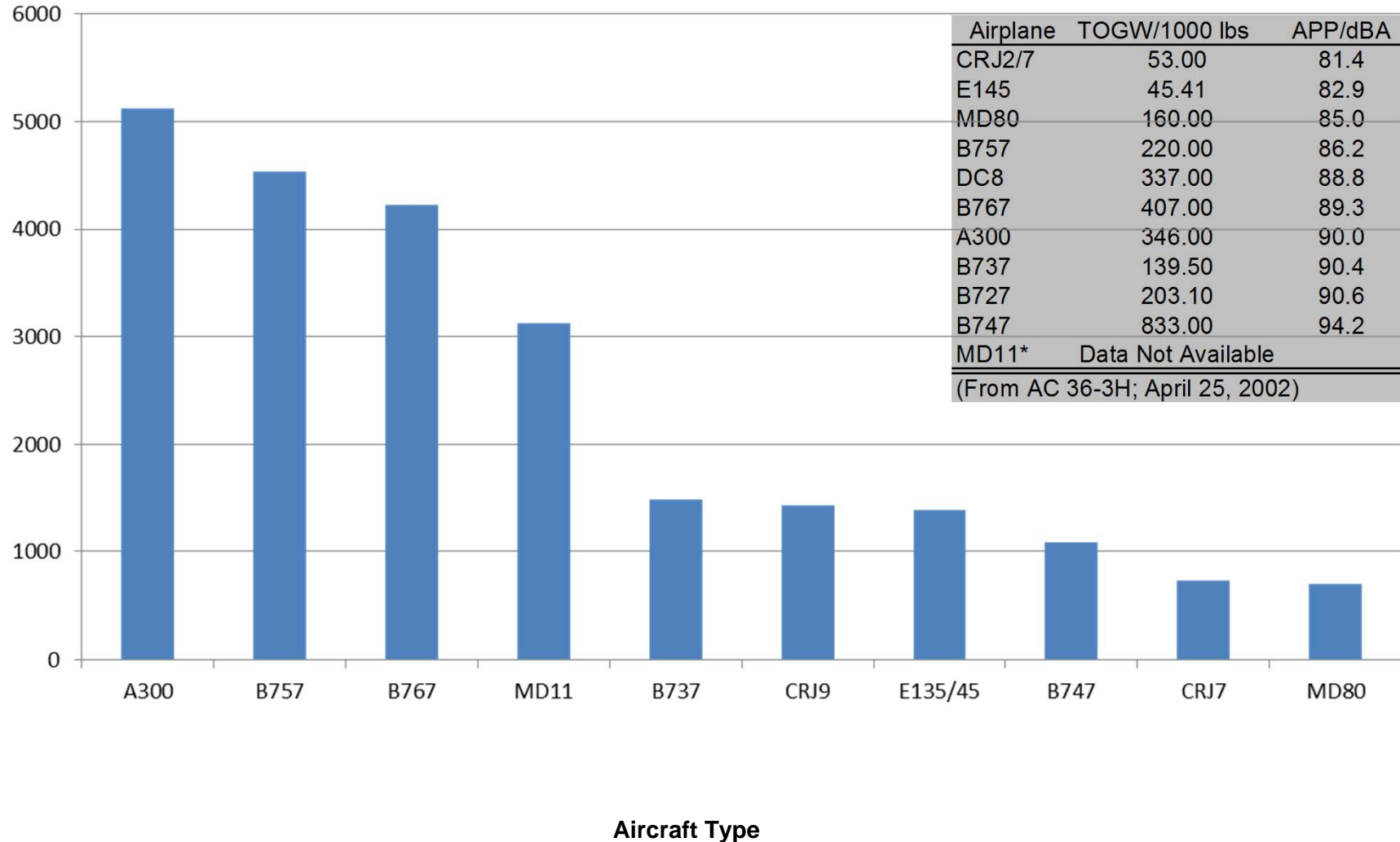


	ARRIVALS Percent Compliant					Departure Percent Compliant				
Month	17L	17R	35L	35R	ARR AVG	17L	17R	35L	35R	DEP AVG
Nov-16	82%	93%	87%	86%	87%	80%	88%	75%	87%	83%
Dec-16	89%	97%	93%	94%	93%	75%	90%	83%	90%	85%
Jan-16	83%	94%	89%	88%	89%	74%	90%	63%	83%	78%
Feb-16	80%	94%	91%	91%	89%	85%	89%	75%	83%	83%
Mar-16	85%	95%	89%	88%	89%	70%	87%	73%	85%	79%
Apr-16	80%	90%	86%	87%	86%	83%	83%	69%	82%	79%
May-16	82%	93%	86%	87%	87%	82%	87%	65%	88%	81%
Jun-16	77%	91%	85%	85%	85%	87%	88%	75%	85%	84%
Jul-16	84%	92%	88%	91%	89%	82%	88%	61%	88%	80%
Aug-16	85%	94%	87%	88%	89%	85%	88%	72%	89%	84%
Sep-16	80%	91%	89%	89%	87%	84%	90%	61%	88%	81%
Oct-16	82%	92%	86%	86%	87%	82%	90%	74%	90%	84%
Nov-16	84%	94%	90%	86%	89%	78%	89%	70%	88%	81%
Dec-16	89%	94%	92%	92%	92%	80%	87%	74%	80%	80%
Jan-17	88%	96%	93%	92%	92%	66%	91%	78%	84%	80%
Feb-17	87%	95%	91%	88%	90%	72%	92%	81%	87%	83%
Mar-17	87%	96%	90%	89%	91%	70%	89%	72%	88%	80%
Apr-17	86%	94%	87%	92%	90%	69%	86%	76%	85%	79%
May-17	86%	90%	90%	89%	89%	72%	90%	67%	84%	78%
Jun-17	87%	87%	87%	88%	87%	79%	91%	69%	87%	82%
Jul-17	87%	92%	90%	90%	90%	81%	89%	67%	86%	81%
Aug-17	84%	93%	90%	87%	89%	80%	84%	73%	91%	82%
Sep-17	87%	91%	88%	90%	89%	91%	90%	74%	85%	85%
Oct-17	88%	95%	89%	88%	90%	80%	87%	77%	89%	83%
Nov-17	88%	94%	91%	91%	91%	76%	90%	67%	91%	81%
Dec-17	88%	95%	92%	92%	92%	77%	89%	73%	86%	81%
24 Month Avg.					89%					81%

Source: Louisville International Airport
Aircraft Flight Tracking and Noise Management System (AFTNMS)

Operations by Aircraft Type (SDF) Only Top 10 Aircraft Types Shown

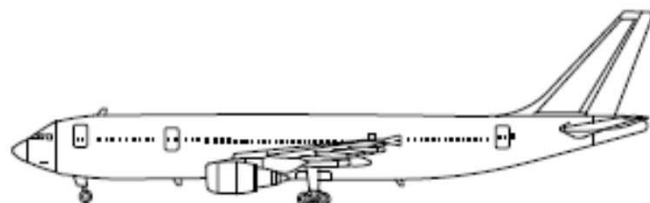
November / December 2017



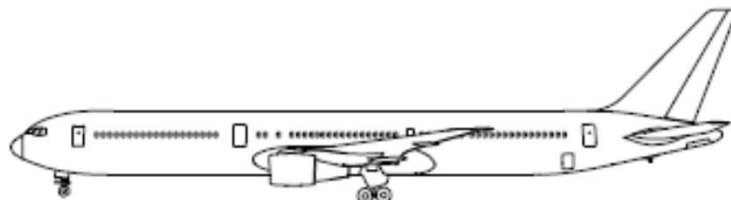
Source: Louisville International Airport

Aircraft Flight Tracking and Noise Management System (AFTNMS)

Sample Aircraft Types (SDF)



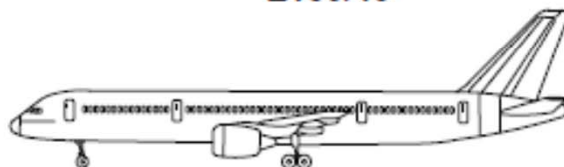
A300



B767



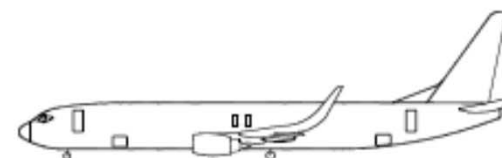
E135/45



B757



MD11



B737



CRJ2



E170



MD80



CRJ9