

Community Noise Forum
Monday, September 24, 2018
Agenda

- I. Call to order: 6:00 PM
- II. Minutes: July 30, 2018
- III. Part 150 NCP
 - A. Working Group Report
 - B. Noise Insulation Program
 - C. Contraflow Exceptions
- IV. Current Noise Concerns
 - A. Noise Concerns/Complaints
 - B. Runway Utilization
 - C. Construction and Maintenance Activity
- V. Announcements
- VI. Guest Comments
- VII. Next Meeting: November 26, 2018
- IX. Adjournment

COMMUNITY NOISE FORUM (CNF)
Monday, July 30, 2018

Members

John Sistarenik, ANA
Tom Foote, Airline Affairs
Mary Rose Evans, LRAA Board
Brian Sinnwell, LRAA
Bob Slattery, LRAA

Verná Goately, Metro
John Greathouse, Southwest (Alt)
Denny Thompson, Southeast
Mike Zanone, Northwest

Guests

Bill Graham, Fairdale
Don & Pat Slocum, Preston Park
Joe & Billye Potts, Clarks Lane
Nicole George, Southern Parkway

Jonathan Bond, UPS
Kathleen Krill, Preston Park

The meeting was called to order at 6:00 p.m. by John Sistarenik. The May minutes were approved as written.

Part 150 NCP:

- A. Working Group Report:** John Sistarenik reported that Working Group has been looking at the possibility of narrowing some of the takeoff paths to help decrease some of the noise and aircraft flyovers in the area of the Jefferson Memorial Forrest. John thanked Jonathan Bond of UPS for his assistance in this process. Mary Rose, John and Bob met to review progress to date. They felt that it would be useful to have an additional meeting of the Working Group in order to work out additional details and prepare for any possible action that the group might want to take at the September Meeting. Tuesday, August 7 at 10:00 a.m. was the date and time set for the next working group meeting.
- B. Noise Insulation Program: Residential** – The program consultants (C&S Engineers) have been working on development of a potential program boundary as well as program policies and procedures. These items will need to be reviewed by the Airport Authority and FAA. **UofL** - Only one party submitted comments in response to the invitations to consult that were sent by the FAA and it was the University. The FAA will be contacting UofL in order to discuss their comments received during the Section 106 consultation period. Currently, it appears right now that no additional consultation will be required.
- C. Contraflow Exceptions:** Contraflow for May was 43% for arrivals from the south and 89% for departures to the south. In June, arrivals from south were 74% and departures to the south were 91%. A daily summary for May and June is contained in the handout. The 2 year average (July 2016-June 2018) for contraflow is 72% for arrivals and 77% for departures. A monthly summary going back 8 years is also included in the handout.

Current Noise Concerns:

- A. Report on Noise Concerns/Complaints:** A total of 14 comments were received in May. In June, a total of 9 comments were received. In June all comments were from areas north of the airport. Comments and locations are contained in the handout.
- B. Runway Utilization:** Runway utilization percentages for May and June are contained in the handout. Daily runway utilization and comments from the Air Traffic Control Tower are also included in the handout. Bob pointed out that year to date arrivals on runway 17R (west runway) are averaging approximately 4% above projections for the Noise Exposure Map Update. This is most likely related to the low number of contraflow arrivals from the south in the month of May. Mike Zanone asked if the notes about photo missions and aerial survey work in the May runway use comments were related to military or civilian contractor. Bob explained that it was his understanding these operations were related to work being performed by a department in Metro Government.
- C. Construction and Maintenance Activity:** Brian Sinnwell reported that the airport doubled up on runway work earlier in the spring and summer this year and has completed replacement of over 100 slabs. This work is complete for the remainder of the year. The airfield apron project is still ongoing but it does not impact aircraft operations. The airfield lighting project has also been completed for the year. Remaining work for the year will be apron work around the terminal area and should not impact airfield operations. No additional projects are scheduled for the remainder of the year except for routine maintenance work during the typical runway closure periods. On Mondays the west runway is closed and on Tuesdays the east is closed for routine maintenance.

Announcements: None.

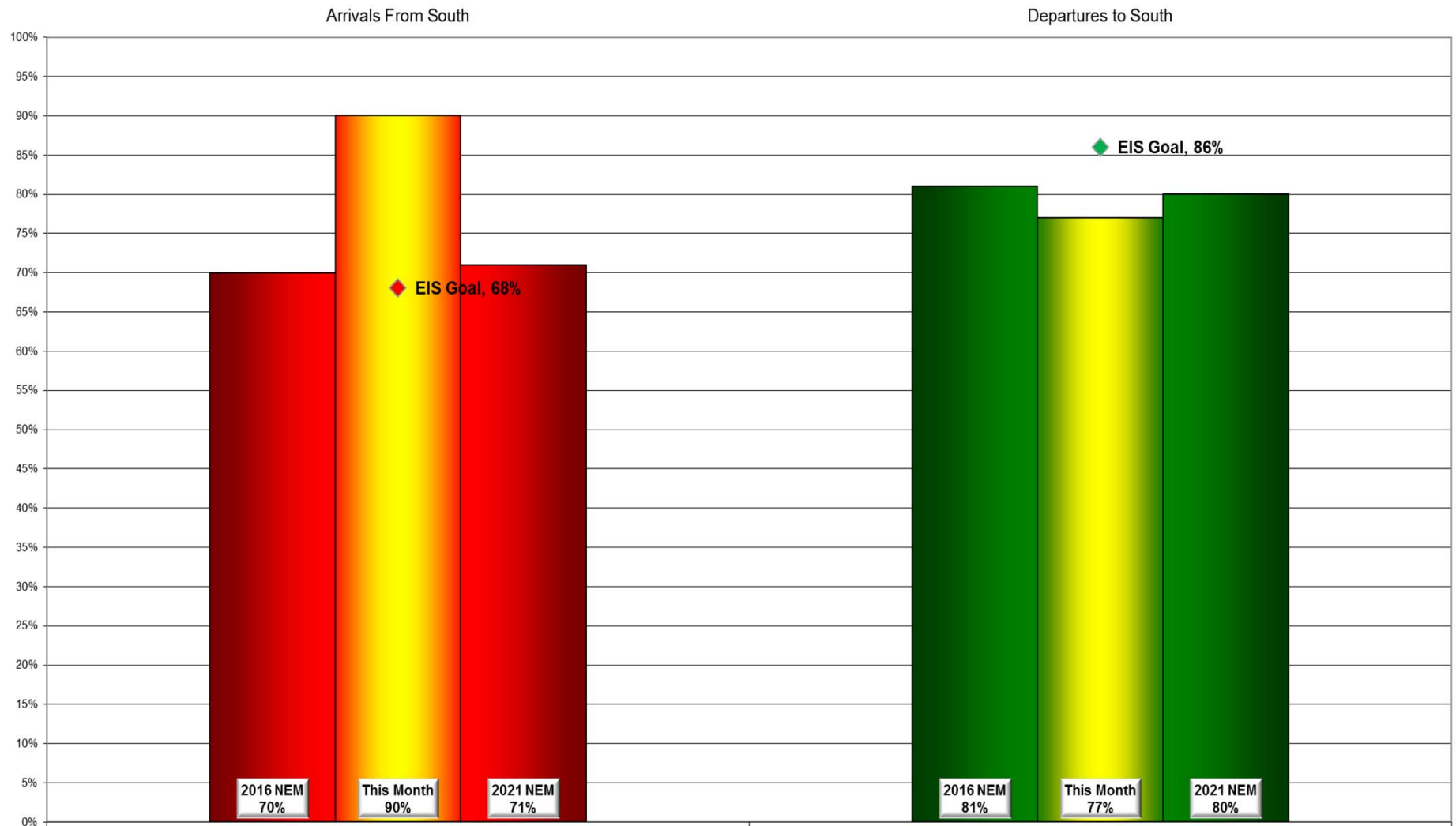
Guest Comments: Mr. Joe Potts asked if we were planning to expand the boundaries of the sound insulation program. Bob explained that the planned additional work is related to additional homes located within the DNL 65 contour on the updated Noise Exposure Maps. John explained that the CNF has been working on a tax credit legislation that would give residents within the DNL 60-65 contour a 100% tax credit on sound insulation work that they completed. John also stated that although this effort has been unsuccessful to this point, they will continue trying. Kathleen Krill of Preston Park asked if the handful of homes south of the airport located within the DNL 65 contour would be included in the sound insulation program. Bob explained that currently the Noise Compatibility Program (NCP) calls for sound insulation of homes north of the airport and relocation for homes south of the airport. The plan is to amend the current NCP to remove the word “north” from the sound insulation measure. This would allow for the sound insulation of homes in all areas around the airport. Mike Zanone stated that he has noticed an increase in fighter jet type aircraft activity in the area and wanted to know if anyone was aware of a possible mission change related to Air National Guard (ANG).

Bob said that he was not aware of a mission change for the ANG. However, these types of operations could be related to activity at Fort Knox.

Next Meeting: Monday, September 24, 2018 at 6 p.m.

Adjournment: A motion was made to adjourn the meeting at 6:30 p.m.

Monthly Contraflow July 2-31, 2018



Daily Runway Use Summary – July 2018

(from 10:00 PM date list in first column to 7:00 AM the following morning)

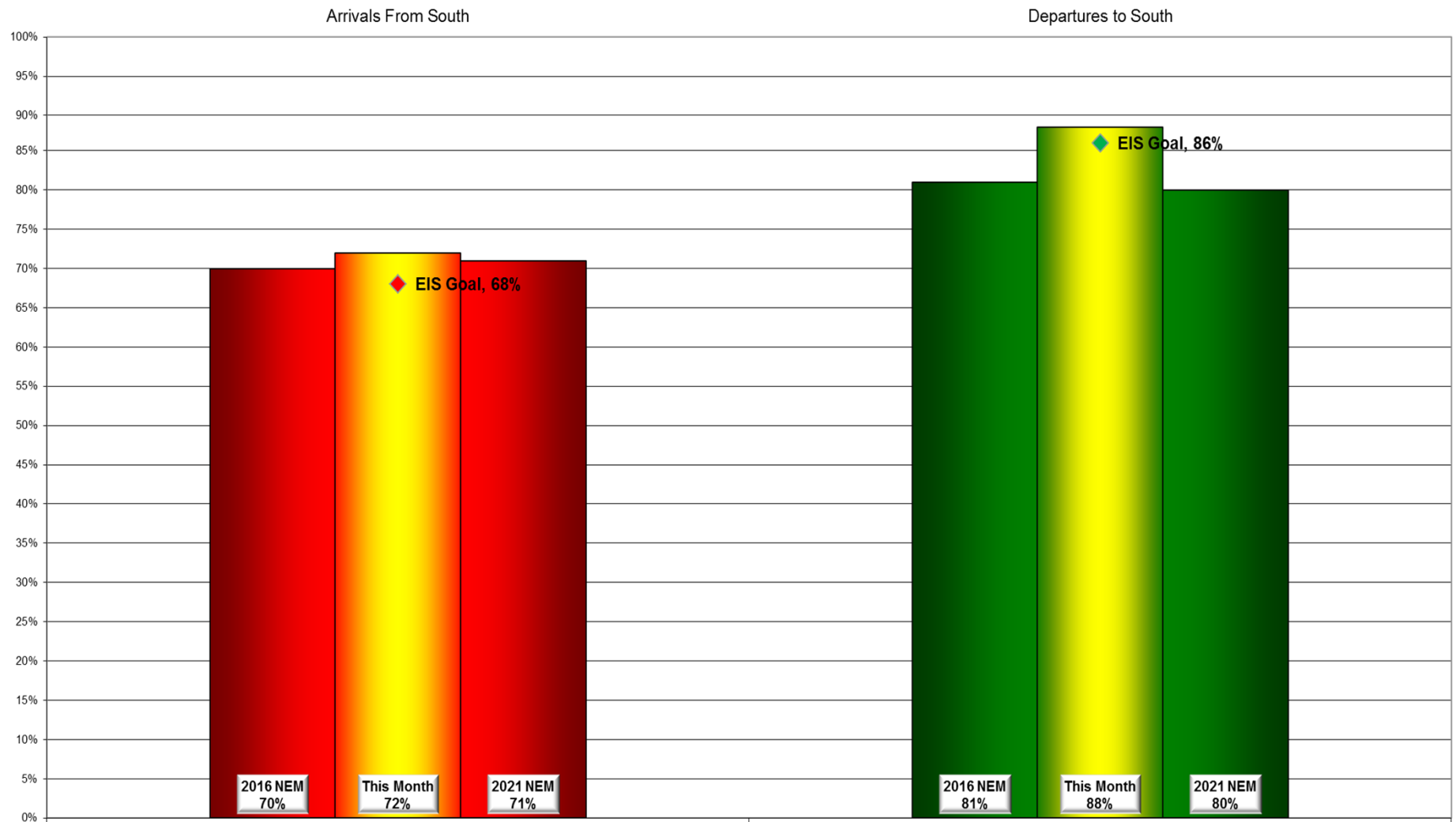
		% of all arrivals from the south										% of all departures to the south									
Date	Day	* in compliance	Runway #						Unknown Runway Use	Notes / Comments		** in compliance	Runway #						Unknown Runway Use	Notes / Comments	
			11	17L	17R	29	35L	35R					11	17L	17R	29	35L	35R			
07/02/18	Mon	98%			0	2		62	36	0		93%			37	56		4	3	0	
07/03/18	Tue	95%			3	2		62	33	0		81%			36	45		8	11	0	350-080@3kts
07/04/18	Wed	85%			10	5		72	13	0		100%			35	65				0	
07/05/18	Thu	98%				2		59	39	0		91%			41	50		4	5	0	
07/06/18	Fri	100%						64	36	0		0%						49	51	0	040-050@7-10kts,g18
07/07/18	Sat																				
07/08/18	Sun																				
07/09/18	Mon	89%			5	6		56	33	0		89%			36	53		7	4	0	
07/10/18	Tue	97%			1	1		65	32	0		88%		1	34	54		6	5	0	
07/11/18	Wed	98%			1	1		63	35	0		88%			40	48		8	4	0	
07/12/18	Thu	98%			1	1		64	34	0		92%			44	48		4	4	0	
07/13/18	Fri	92%			6	2		60	32	0		91%			46	45		4	5	0	
07/14/18	Sat																				
07/15/18	Sun																				
07/16/18	Mon	98%			1	1		61	37	0		89%			37	52		7	4	0	
07/17/18	Tue	97%			2	1		60	37	0		87%			38	49		6	7	0	
07/18/18	Wed	98%			1	1		60	38	0		86%			38	48		9	5	0	
07/19/18	Thu	95%			2	3		64	31	0		91%			41	50		4	5	0	
07/20/18	Fri	0%			39	61		0	0	0	130-290@4-10kts,g34,ra,ts	100%			37	63		0	0	0	
07/21/18	Sat																				
07/22/18	Sun																				
07/23/18	Mon	98%			1	1		56	42	0		85%			39	46		11	4	0	270-290@3-4kts
07/24/18	Tue	97%			2	1		61	36	0		85%			37	48		9	6	0	290-310@3-4kts
07/25/18	Wed	97%		1	1	1		60	37	0		93%			35	58		3	4	0	
07/26/18	Thu	100%						56	44	0		0%			0	0		54	46	0	320-330@6-8kts, ra
07/27/18	Fri	95%			1	4		61	34	0		85%			34	51		8	7	0	130-290@3kts
07/28/18	Sat																				
07/29/18	Sun																				
07/30/18	Mon	60%			17	23		41	19	0	120-330@3-7kts,ra	0%						57	43	0	360-070@3-9kts,ra,ts
07/31/18	Tue	99%			0	1		56	43	0		89%			35	54		8	3	0	

Preferred Flow

DATIS Reported Conditions Indicate
Support for Non-Preferred Flow

DATIS Reported Conditions Do Not Indicate
Support for Non-Preferred Flow

Monthly Contraflow August 1-31, 2018



Daily Runway Use Summary – August 2018

(from 10:00 PM date list in first column to 7:00 AM the following morning)

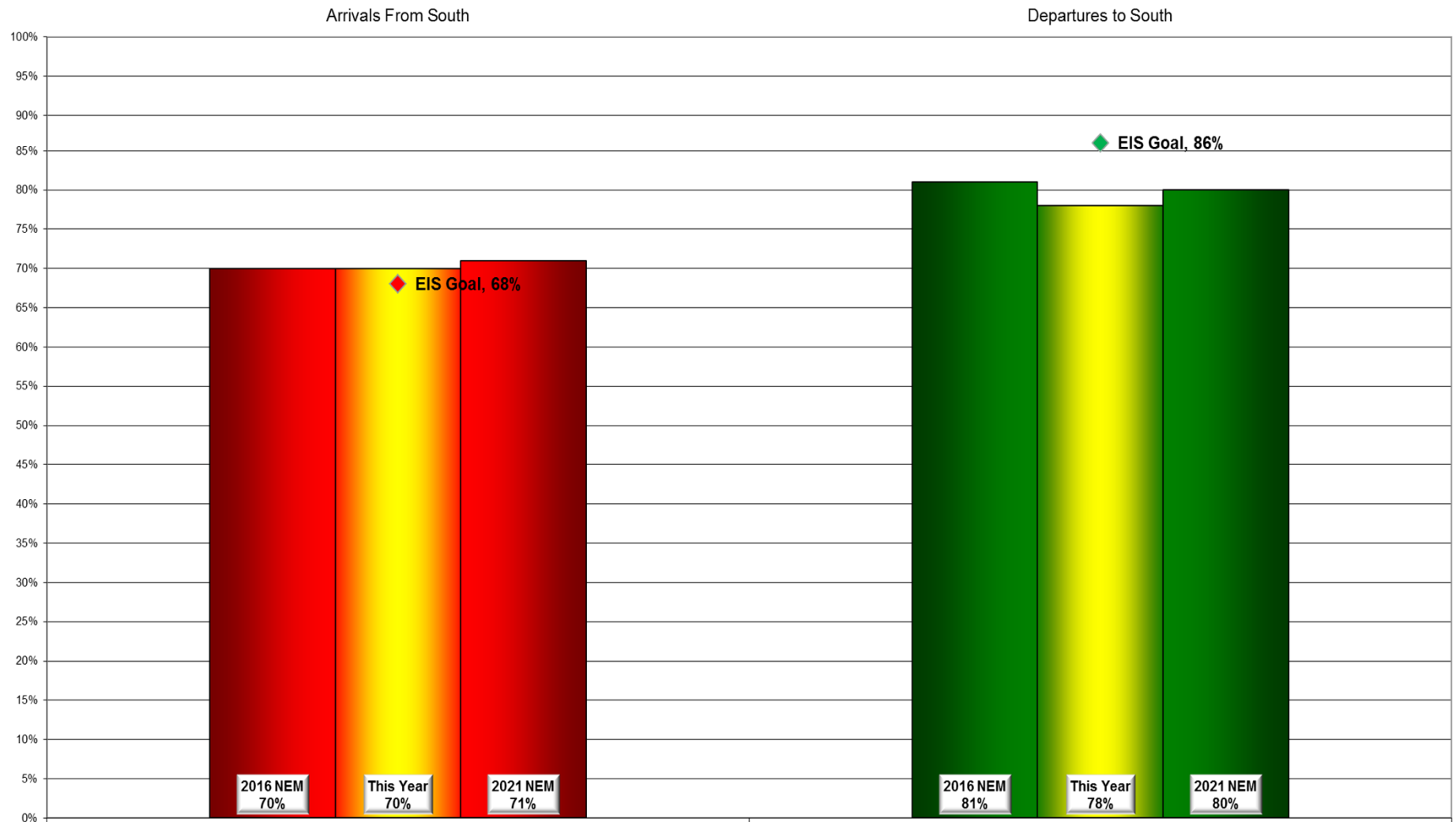
		% of all arrivals from the south										% of all departures to the south											
Date	Day	* in	Runway #							Unknown	Notes / Comments	** in	Runway #							Unknown	Notes / Comments		
		compliance	11	17L	17R	29	35L	35R	Runway	Use			compliance	11	17L	17R	29	35L	35R	Runway		Use	
08/01/18	Wed	99%			0	1			64	35	0		89%			42	47			4	7	0	
08/02/18	Thu	92%			4	4			55	37	0		93%			38	55			3	4	0	
08/03/18	Fri	89%			7	3		1	56	33	0		92%			39	53			6	2	0	
08/04/18	Sat																						
08/05/18	Sun																						
08/06/18	Mon	98%			1	1			59	39	0		93%			38	55			6	1	0	
08/07/18	Tue	94%			2	4			61	33	0		91%			37	54			5	4	0	
08/08/18	Wed	92%			5	3			54	38	0		92%			38	54			4	4	0	
08/09/18	Thu	97%			2	1			55	42	0		88%			39	49			8	4	0	
08/10/18	Fri	93%			2	5			56	37	0		91%			38	53			5	4	0	
08/11/18	Sat																						
08/12/18	Sun																						
08/13/18	Mon	99%			1				64	35	0		93%			36	57			5	2	0	
08/14/18	Tue	96%			1	3			62	34	0		89%			37	52			6	5	0	
08/15/18	Wed	48%			22	30			34	14	0	010-260@3-17kts,g26,ra,ts	66%			30	36			23	11	0	080-150@4-7kts,ra,ts
08/16/18	Thu	0%			34	66					0	170-220@6-10kts	100%			40	60					0	
08/17/18	Fri	96%			3	1			63	33	0		93%			36	57			4	3	0	
08/18/18	Sat																						
08/19/18	Sun																						
08/20/18	Mon	0%			35	65					0	150-190@7-12kts,g20,ra	100%			37	63					0	
08/21/18	Tue	98%			1			1	63	35	0		0%							58	42	0	310-320@7-8kts
08/22/18	Wed	96%		1	1	2			61	35	0		92%			36	56			5	3	0	
08/23/18	Thu	94%			3	2		1	61	33	0		94%			37	57			3	3	0	
08/24/18	Fri	0%			43	57					0	140-150@5-8kts	100%			40	60					0	
08/25/18	Sat																						
08/26/18	Sun																						
08/27/18	Mon	0%			43	57					0	150-160@7-8kts	100%			40	60					0	
08/28/18	Tue	0%			38	62					0	150-190@6-7kts	100%			42	58					0	
08/29/18	Wed	89%			6	5			56	33	0		87%			35	52			7	6	0	
08/30/18	Thu	98%			1	1			61	37	0		94%			40	54			4	2	0	
08/31/18	Fri	92%			2	6			51	41	0		92%			45	47			5	3	0	

Preferred Flow

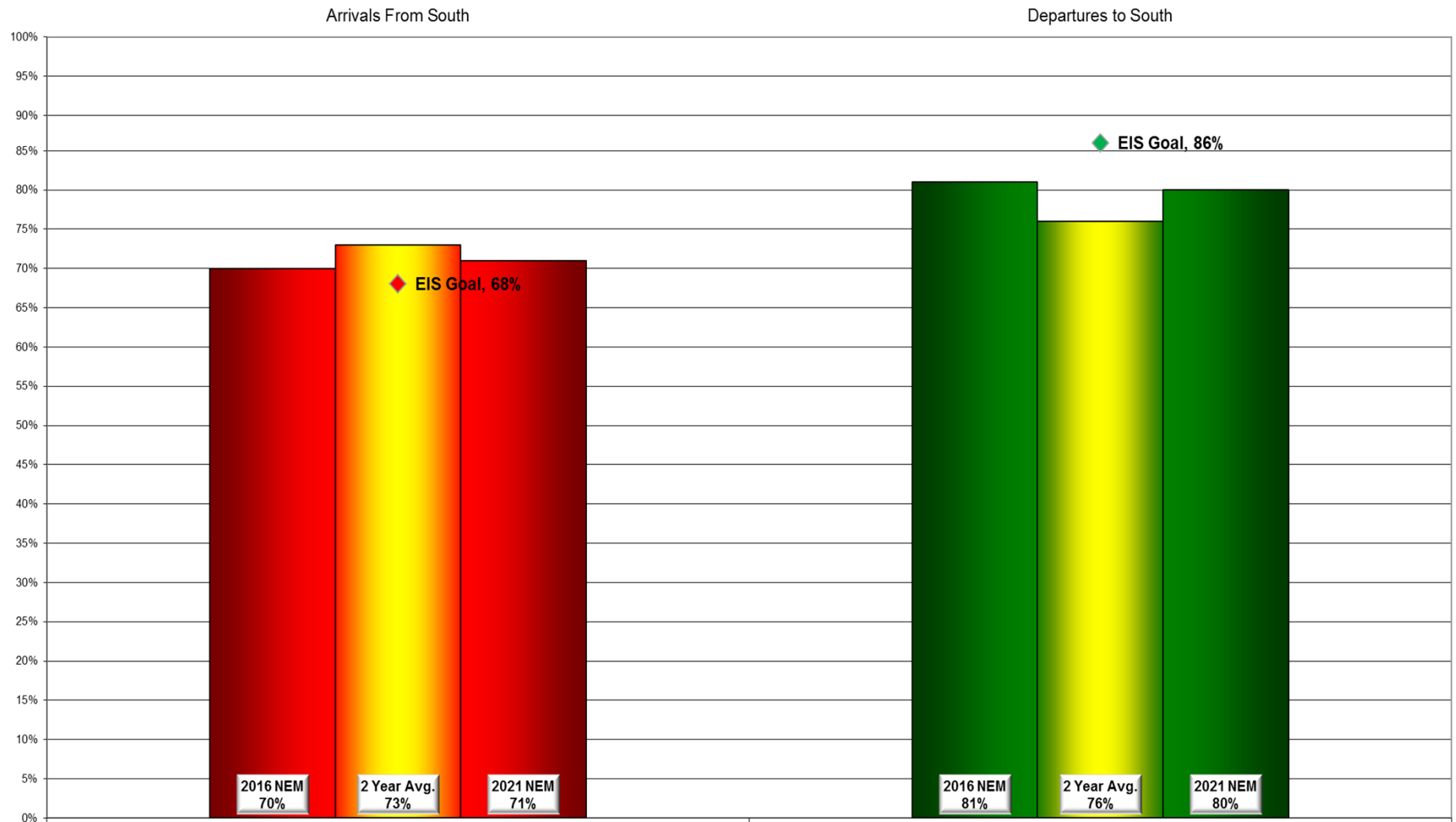
DATIS Reported Conditions Indicate
Support for Non-Preferred Flow

DATIS Reported Conditions Do Not Indicate
Support for Non-Preferred Flow

Contraflow This Year As of August 31, 2018



Contraflow 2 Year Average September 2016 - August 2018



Year-to-Year by Month Percent* Contraflow

Arrivals From the South (Goal 68%)										Departures to the South (Goal 86%)									
	2011	2012	2013	2014	2015	2016	2017	2018	Avg		2011	2012	2013	2014	2015	2016	2017	2018	Avg
Jan	91%	62%	72%	51%	76%	69%	65%	60%	68%	Jan	71%	80%	65%	81%	76%	69%	61%	72%	72%
Feb	73%	69%	77%	72%	66%	80%	58%	67%	70%	Feb	63%	74%	78%	71%	76%	67%	77%	70%	72%
Mar	52%	61%	87%	60%	71%	63%	79%	84%	70%	Mar	72%	96%	77%	77%	66%	77%	62%	61%	74%
Apr	47%	78%	60%	67%	53%	86%	56%	73%	65%	Apr	83%	76%	89%	83%	77%	73%	80%	72%	79%
May	69%	72%	46%	60%	75%	62%	75%	43%	63%	May	85%	81%	85%	92%	80%	80%	80%	89%	84%
Jun	61%	79%	76%	75%	57%	79%	74%	74%	72%	Jun	93%	87%	80%	91%	91%	83%	93%	91%	89%
Jul	91%	62%	74%	79%	74%	59%	85%	90%	77%	Jul	88%	92%	88%	85%	80%	91%	85%	77%	86%
Aug	82%	49%	84%	61%	86%	76%	79%	72%	74%	Aug	91%	91%	92%	92%	91%	90%	90%	88%	91%
Sep	85%	55%	86%	85%	95%	88%	85%		81%	Sep	64%	92%	87%	86%	73%	93%	31%		75%
Oct	88%	62%	87%	75%	86%	81%	81%		80%	Oct	63%	78%	89%	79%	74%	81%	82%		78%
Nov	55%	84%	73%	78%	59%	74%	69%		72%	Nov	72%	81%	83%	62%	88%	77%	75%		77%
Dec	70%	64%	58%	78%	55%	75%	74%		68%	Dec	65%	67%	71%	68%	79%	62%	74%		71%
Avg	72%	66%	73%	70%	71%	74%	73%	70%		Avg	76%	83%	82%	81%	79%	79%	74%	78%	

*Number is percentage of all operations between 10:00 PM - 7:00 AM

NOISE COMMENT REPORT



July 2018

Comments (SDF/LOU)

July 2018

Street	Zip Code	CNF Quad / 2021 DNL	Time Received	Time	Airport	Disturbance Type	Status	Operation or Comment Type ¹	Deviation Type ²	Comments
Evergreen Cir	47130	SI (<60)	2018-07-05 09:12:00	2018-07-05 09:12:00	SDF	Aircraft Too Low	Investigated	Standard	None	I am a resident of Jeffersonville Indiana across the bridge. I did notice that there has been an increase in air traffic quite a bit where it is disturbing. I work from home and we live in a residential area. Because of the traffic pattern changes we are grossly affected over here on the other side of the river. I wanted to talk with someone about this because in the fifteen years that we have lived here we have never had airplanes fly so low and close to our home. It is quite a nuisance. I would like to talk to someone and find out who I can file a formal complaint with. Do I do that through you all or do I go through the City of Jeffersonville?
S. 2nd ST	40214	SW (60-65)	2018-07-11 16:38:00	2018-07-11 16:38:00	SDF	Over Use of Runway	Investigated	Non-Standard	Weather	It is about twenty minutes until five in the afternoon and UPS planes are dead set on going over my house. I am not happy about it as you always know. Give me a call so I can find out what miraculous excuse you have this time.
E Southside Ct	40214	SW (60-65)	2018-07-12 16:00:00	2018-07-12 16:00:00	SDF	Other	Investigated	Standard	None	I am trying to find out where the airplanes land at the airport and if they would be an issue for this property.
Fenley Ave	40207	NE (NA)	2018-07-17 10:28:00	2018-07-17 10:28:00	LOU	Too Much Noise	Investigated	Standard	None	I am calling in regards to aircraft coming out of Bowman Field and flying low with a lot of noise. This occurs constantly at all times of the day. I called Bowman Field and spoke with a person named Mike and he said this was probably a school or students. This has probably gone on for three or four months and I am at my wits end with it. If it is a school they are flying way too low and waking me up.

1. **Standard:** Indicates the “Most Preferred” runway configuration was being utilized at the time of the comment.
Non Standard: Indicates that a “Lesser Preferred” runway configuration was being utilized at the time of the comment.
QHP: QuieterHome Program

2. This column is used to indicate the conditions which most likely necessitated a deviation from the standard procedures.

Comments (SDF/LOU)

July 2018

Street	Zip Code	CNF Quad / 2021 DNL	Time Received	Time	Airport	Disturbance Type	Status	Operation or Comment Type ¹	Deviation Type ²	Comments
Taylorsville Rd	40205	NE (NA)	2018-06-04 15:30:00	2018-07-17 13:55:01	LOU	Other	Investigated	Standard	None	<p>I am with a company called Dominion Due Diligence Group that has been contracted to perform a Phase I Environmental Site Assessment at a site located near the airport. The client is seeking funding from a government agency, and in doing so requires me to assess the noise levels at all airports within 15 miles of the subject property. I was wondering if you could provide me with any noise contour maps/DNLs for Bowman Field. Any sort of information regarding noise levels at the airports would be greatly appreciated.</p>

1. **Standard:** Indicates the “Most Preferred” runway configuration was being utilized at the time of the comment.
Non Standard: Indicates that a “Lesser Preferred” runway configuration was being utilized at the time of the comment.
QHP: QuieterHome Program

2. This column is used to indicate the conditions which most likely necessitated a deviation from the standard procedures.

Comments (SDF/LOU)

July 2018

Street	Zip Code	CNF Quad / 2021 DNL	Time Received	Time	Airport	Disturbance Type	Status	Operation or Comment Type ¹	Deviation Type ²	Comments
Budd Rd	47150	SI (<60)	2018-07-22 17:35:00	2018-07-22 07:00:00	SDF	Constant Noise	Investigated	Non-Standard	Weather	<p>My name is Phil from southern Indiana (New Albany).We have talked before on the phone about aircraft noise and low flying aircraft. I sent a complaint about a month ago about low flying aircraft. I sent the date and time of this aircraft flier. There has been a few more since then.</p> <p>There are also take offs over my house during New Albany's quite hours (evey 30 to 45 seconds) for hours. Most of the flights are to go to the south from what I was told and according to your web site. That has not happened; about 70% to 80% have come over or near my house on Budd Road over the last few months. I've tracked the wind and weather conditions at the airport and no matter what the wind or weather is they have been flying over this area. I also come home at 4:00 p.m. and they are flying over during dinner so loud I can't even talk without raising my voice. I can't hear the television unless I turn it up to drown out the roar of the UPS flights. If that isn't enough I've worn Ear plugs at night just to drown out some of the sound Now my ears have a permanent numbness and ring from sleeping with them stuffed as hard as I can into my ears. I have lost a lot of sleep and it has caused some errors at my work place. The difference between the place I work and yours is this place does care about the community. We do not ignore complaints as you have. I received an e-mail from our safety department asking us to report any of our plant odors that make it to my area. I'm only about 50 yards from our plant, the building....truncated for space.</p>

1. **Standard:** Indicates the "Most Preferred" runway configuration was being utilized at the time of the comment.
Non Standard: Indicates that a "Lesser Preferred" runway configuration was being utilized at the time of the comment.
QHP: QuieterHome Program

2. This column is used to indicate the conditions which most likely necessitated a deviation from the standard procedures.

Comments (SDF/LOU)

July 2018

Street	Zip Code	CNF Quad / 2021 DNL	Time Received	Time	Airport	Disturbance Type	Status	Operation or Comment Type ¹	Deviation Type ²	Comments
Milton St	40217	NE (<60)	2018-07-24 17:41:00	2018-07-24 17:41:00	SDF	Other	Investigated	Non-Standard	Weather	I live in the Schnitzelburg neighborhood. Planes fly over our house and behind it all day and night. Someone the other day told me about the airport paying for windows. Our home has the original windows from when the house was built. I'm not for sure if you are the correct person to contact or not, but if you could point me in the right direction I would greatly appreciate it.
Julia Ave	40204	NE (<60)	2018-07-25 22:02:00	2018-07-25 22:02:00	SDF	Aircraft Off Course	Investigated	Non-Standard	Weather	I live on Julia Ave and airplane noises have increased significantly over the past couple weeks and more in the last several days. This seems to arise from changed flight paths - airplanes banking earlier rather than flying straight out after takeoff, and yesterday and today planes flew almost directly over the house. Are these changes temporary? If so, how long are they likely to last? Due to a traumatic brain injury I am especially vulnerable to noise from aircraft engines. Current info re: flight times/paths will help me manage symptoms and plan around the loudest, most difficult times of day.
Lydia St	40217	NE (<60)	2018-07-27 11:11:00	2018-07-27 10:02:00	SDF	Aircraft Off Course	Investigated	Non-Standard	Weather	Thanks for flying planes over my house all day yesterday and all night last night. You say "the planes may drift off course." They definitely bank out of the airport making a hard right.
Parkway DR	40217	NE (60-65)	2018-07-31 16:06:00	2018-07-31 16:06:00	SDF	Over Use of Runway	Investigated	Standard	None	Do you think those planes can take off a different way rather than north? It is very annoying. No peace and quiet any more.

1. **Standard:** Indicates the "Most Preferred" runway configuration was being utilized at the time of the comment.
Non Standard: Indicates that a "Lesser Preferred" runway configuration was being utilized at the time of the comment.
QHP: QuieterHome Program

2. This column is used to indicate the conditions which most likely necessitated a deviation from the standard procedures.

Comments (SDF/LOU)

July 2018

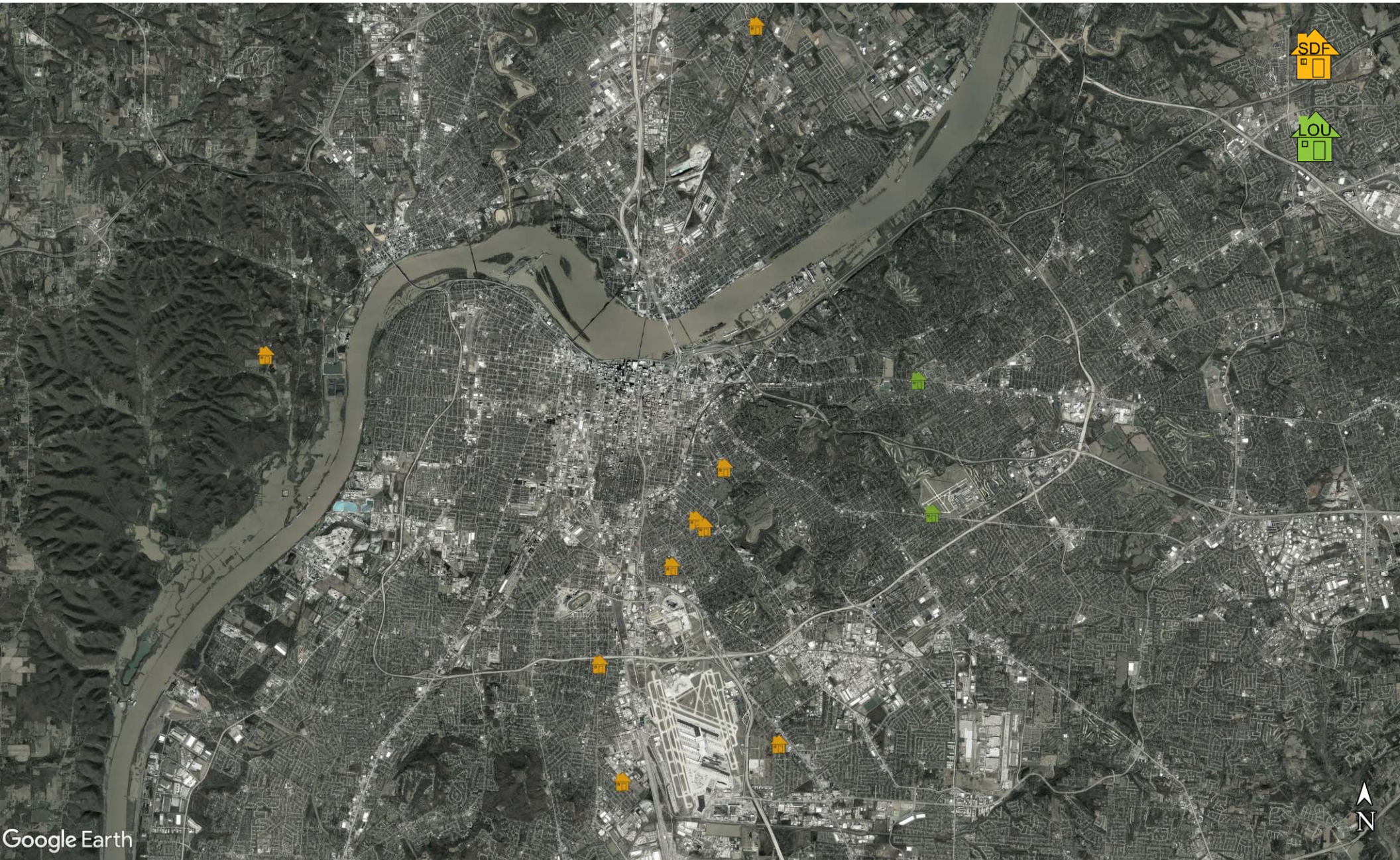
Street	Zip Code	CNF Quad / 2021 DNL	Time Received	Time	Airport	Disturbance Type	Status	Operation or Comment Type ¹	Deviation Type ²	Comments
Halstead Ave	40213	SE (60-65)	2018-07-31 16:30:00	2018-07-31 16:30:00	SDF	Other	Investigated	Standard	None	I live in Preston Park over off of Preston. You all bought the back end of our neighborhood out (Edgewood). I was checking to see if there was any news about a possible upcoming buy out for the rest of us.
							Received	LRAA	11	

1. **Standard:** Indicates the “Most Preferred” runway configuration was being utilized at the time of the comment.
Non Standard: Indicates that a “Lesser Preferred” runway configuration was being utilized at the time of the comment.
QHP: QuieterHome Program

2. This column is used to indicate the conditions which most likely necessitated a deviation from the standard procedures.

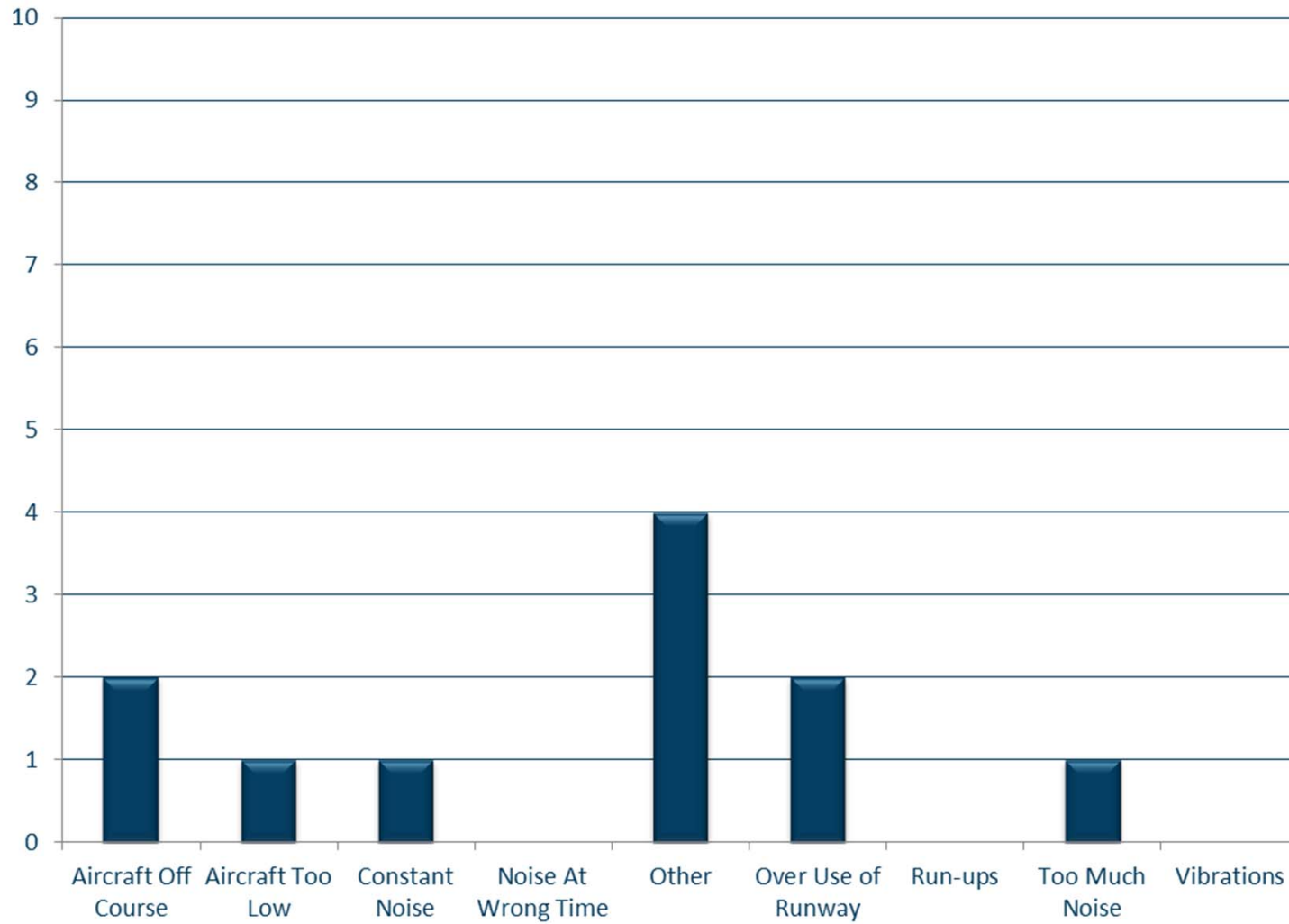
Comment Location (SDF/LOU)

July 2018



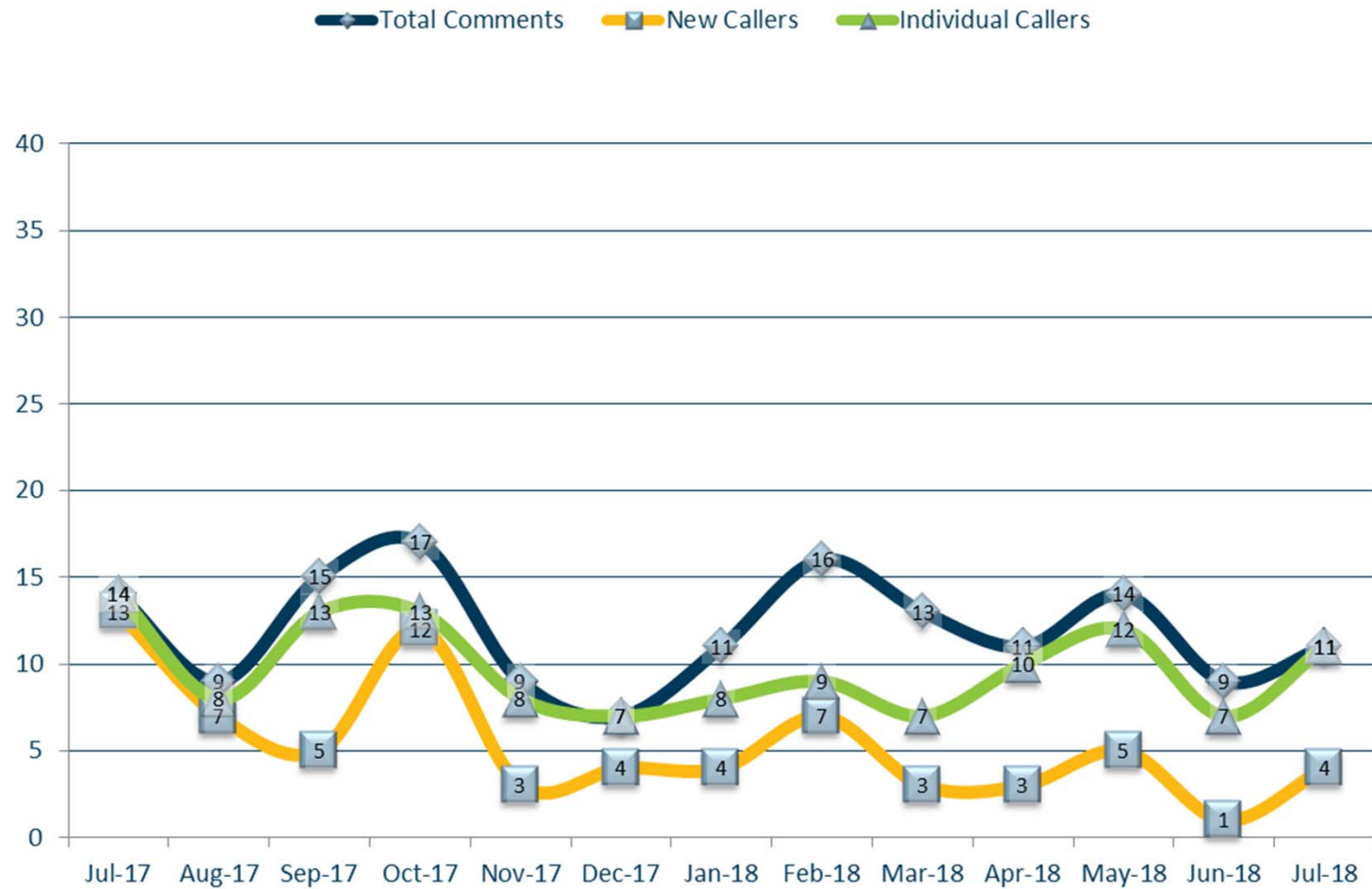
Comment Type (SDF and LOU)

July 2018



New Address/Comments per Month (SDF and LOU)

July 2018



NOISE COMMENT REPORT



August 2018

Comments (SDF/LOU)

August 2018

Street	Zip Code	CNF Quad / 2021 DNL	Time Received	Time	Airport	Disturbance Type	Status	Operation or Comment Type ¹	Deviation Type ²	Comments
S. 2nd ST	40214	SW (60-65)	2018-08-12 16:43:00	2018-08-12 16:43:00	SDF	Noise At Wrong Time	Investigated	Non-Standard	Weather	Hey Bob it is Doris give me a call. It is 4:40 p.m. and UPS is taking advantage of us. There is no wind, we have checked. There is nothing to cause them to be going over our house today.
Norton Ave	40213	SE (60-65)	2018-08-21 14:50:00	2018-08-21 14:50:00	SDF	Constant Noise	Investigated	Standard	None	I have lived here for approximately 18 years. The noise from the airport seems to be getting worse. It vibrates my fixtures on the walls and is keeping me up at night.
Milton St	40217	NE (<60)	2018-08-22 05:42:00	2018-08-22 05:42:00	SDF	Too Much Noise	Investigated	Non-Standard	None	I live in the Schnitzelburg/Germantown area. It seems as if the airplane noise has been getting louder. I was wondering if the planes are flying lower sometimes or if the flight pattern has changed and the planes are now taking off over my neighborhood. I was also wondering if this is temporary or weather related. And, if there is anywhere that I can find this information without bothering anyone in the future, please let me know.

1. **Standard:** Indicates the “Most Preferred” runway configuration was being utilized at the time of the comment.
Non Standard: Indicates that a “Lesser Preferred” runway configuration was being utilized at the time of the comment.
QHP: QuieterHome Program

2. This column is used to indicate the conditions which most likely necessitated a deviation from the standard procedures.

Comments (SDF/LOU)

August 2018

Street	Zip Code	CNF Quad / 2021 DNL	Time Received	Time	Airport	Disturbance Type	Status	Operation or Comment Type ¹	Deviation Type ²	Comments
Julia Ave	40204	NE (<60)	2018-08-22 16:35:00	2018-08-22 16:35:00	SDF	Vibrations	Investigated	Non-Standard	Weather	Airplane noise from takeoffs began earlier than usual today and has been much louder throughout the day. Planes appear to be flying lower and banking closer. This is very disruptive and caused me to have to leave my home for the day. I have only just returned and in the last 15 minutes multiple aircraft have departed at a louder noise level than usual. This situation is not unique to today. As mentioned below, I am especially vulnerable to airplane noise due to a traumatic brain injury. We have invested in custom window inserts to try to muffle the noise, but, as you know, low frequency aircraft engine noise is one of the most difficult to filter. With the help of a doctor I have tried several ways to try to minimize the impact of the noise on my health to no avail. The constant changes are making this very difficult. Can you please help me by directing me to a place where I can see the upcoming changes to flight paths so that I might try to plan accordingly? Flight Radar is helpful but real time only. This is a significant issue for me and for others. If there is no specific way to plan around changes to the flight path, is there a fund or program that will help us to make additional adjustments to our home? I appreciate anything you can do.
S Steedland Dr	40229	SE (<60)	2018-08-28 15:50:00	2018-08-27 22:00:00	SDF	Too Much Noise	Investigated	Standard	Weather	The planes were really bad last night from 10:00 p.m. to 7:00 a.m. There was one about every 2 minutes. This is affecting our health. This happens quite a bit, but last night was really horrendous.

1. **Standard:** Indicates the “Most Preferred” runway configuration was being utilized at the time of the comment.
Non Standard: Indicates that a “Lesser Preferred” runway configuration was being utilized at the time of the comment.
QHP: QuieterHome Program

2. This column is used to indicate the conditions which most likely necessitated a deviation from the standard procedures.

Comments (SDF/LOU)

August 2018

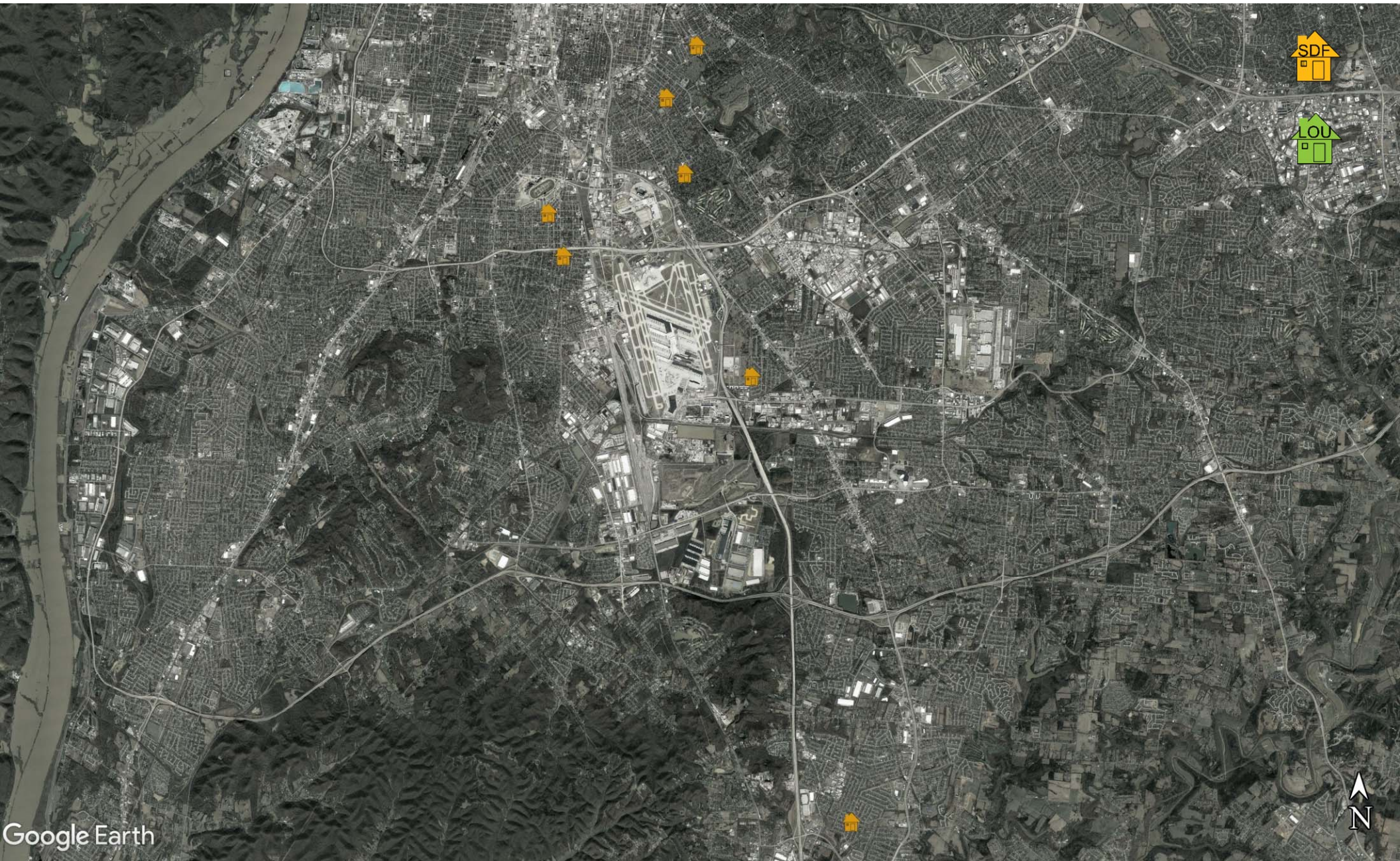
Street	Zip Code	CNF Quad / 2021 DNL	Time Received	Time	Airport	Disturbance Type	Status	Operation or Comment Type ¹	Deviation Type ²	Comments
Greenleaf Rd	40213	NE (<60)	2018-08-28 16:00:00	2018-08-28 16:00:00	SDF	Other	Investigated	Standard	None	I recently bought a house on Greenleaf Road and the neighbors have told me there is program for new windows from the airport. Is this the right place to talk with?
S 5th St	40214	NW (<60)	2018-08-31 17:15:00	2018-08-31 17:15:00	SDF	Aircraft Off Course	Investigated	Non-Standard	Weather	I just had 2 planes fly directly over my house. I am not supposed to be in any flight path at all. If this continues then I expect the airport to insulate my house so I don't have all the noise.
							Received	LRAA	7	

1. **Standard:** Indicates the “Most Preferred” runway configuration was being utilized at the time of the comment.
Non Standard: Indicates that a “Lesser Preferred” runway configuration was being utilized at the time of the comment.
QHP: QuieterHome Program

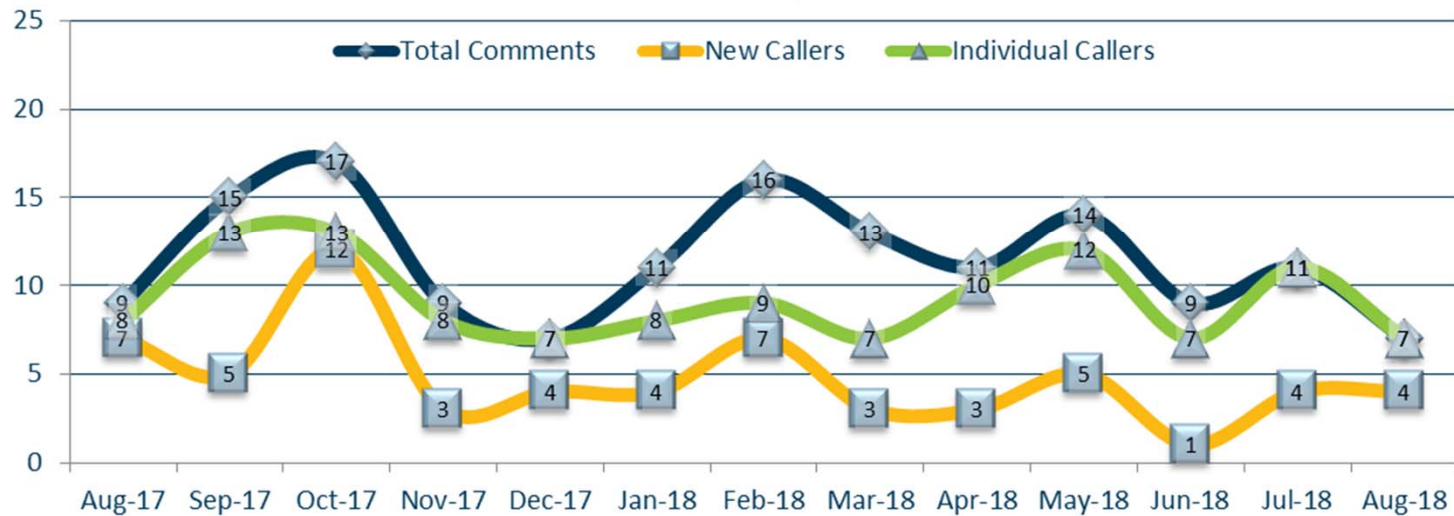
2. This column is used to indicate the conditions which most likely necessitated a deviation from the standard procedures.

Comment Location (SDF/LOU)

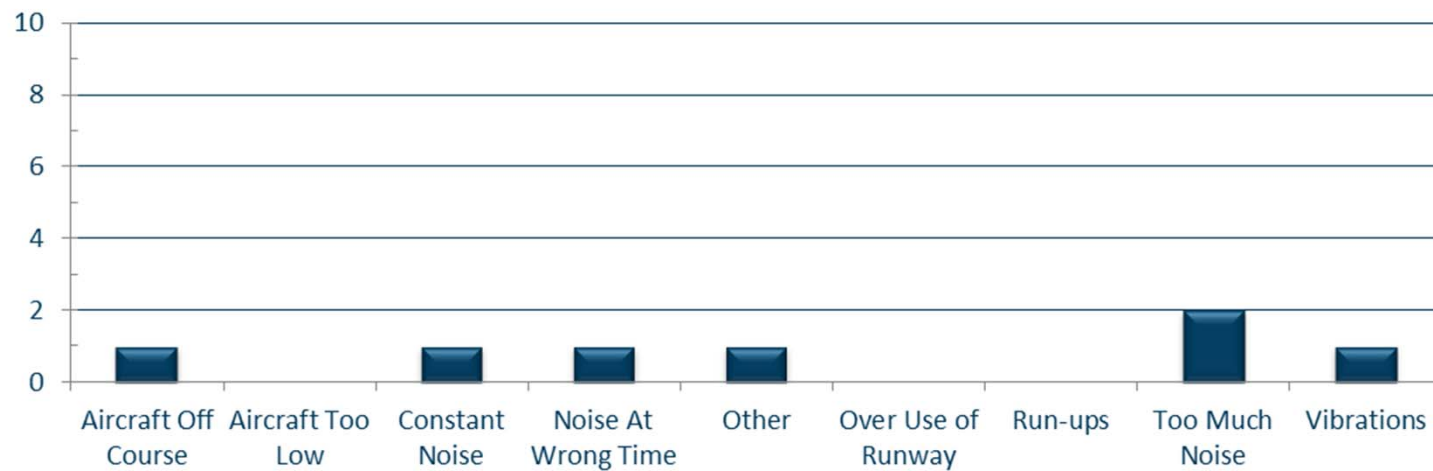
August 2018



New Address/Comments per Month (SDF and LOU)



Comment Type (SDF and LOU) August 2018



Daily Runway Use Uncorrected (SDF) July 2018

Flow	Time	Sun 7/1	Mon 7/2	Tue 7/3	Wed 7/4	Thu 7/5	Fri 7/6	Sat 7/7	Sun 7/8	Mon 7/9	Tue 7/10	Wed 7/11	Thu 7/12	Fri 7/13	Sat 7/14	Sun 7/15	Mon 7/16	Tue 7/17	Wed 7/18	Thu 7/19	Fri 7/20	Sat 7/21	Sun 7/22	Mon 7/23	Tue 7/24	Wed 7/25	Thu 7/26	Fri 7/27	Sat 7/28	Sun 7/29	Mon 7/30	Tue 7/31	Time
North Flow	0:00																																0:00
	0:30																																0:30
	1:00																																1:00
	1:30																																1:30
	2:00																																2:00
	2:30																																2:30
South Flow	3:00																																3:00
	3:30																																3:30
	4:00																																4:00
	4:30																																4:30
	5:00																																5:00
	5:30																																5:30
	6:00																																6:00
	6:30																																6:30
	7:00																																7:00
	7:30																																7:30
North Flow	8:00																																8:00
	8:30																																8:30
	9:00																																9:00
	9:30																																9:30
	10:00																																10:00
	10:30																																10:30
	11:00																																11:00
	11:30																																11:30
	12:00																																12:00
	12:30																																12:30
South Flow	13:00																																13:00
	13:30																																13:30
	14:00																																14:00
	14:30																																14:30
	15:00																																15:00
	15:30																																15:30
	16:00																																16:00
	16:30																																16:30
	17:00																																17:00
	17:30																																17:30
	18:00																																18:00
	18:30																																18:30
	19:00																																19:00
North Flow	19:30																																19:30
	20:00																																20:00
	20:30																																20:30
	21:00																																21:00
	21:30																																21:30
	22:00																																22:00
North Flow	22:30																																22:30
	23:00																																23:00
	23:30																																23:30
	0:00																																0:00

Preferred Flow

DATIS Reported Conditions Indicate Support for Non-Preferred Flow

DATIS Reported Conditions Do Not Indicate Support for Non-Preferred Flow

South Flow is Preferred Flow from 09:30 Saturday - 09:30 Monday

X Complaint

Source: Louisville International Airport
Aircraft Flight Tracking and Noise Management System (AFTNMS)

Daily Runway Use (SDF)

Tower Comments July 2018

Day	Date	Time	Comment
sun	1-Jul-18		
mon	2-Jul-18		
tue	3-Jul-18	0930-1130	REMAINING SOUTH FLOW FOR WIND 15007 AND POTENTIALLY WET SURFACES FROM PASSING SHOWERS. --
wed	4-Jul-18	0930-1230	NO REASON
wed	4-Jul-18	2030-2130	WIND 03010
thu	5-Jul-18	2100-2130	WIND 32013G20
fri	6-Jul-18		
sat	7-Jul-18	0730-1230	WIND 05012KT
sat	7-Jul-18	1530-2130	WIND 03009G15KT
sun	8-Jul-18		
mon	9-Jul-18		
tue	10-Jul-18		
wed	11-Jul-18	1300-1430	REMAINING NORTH DUE TO FORECASTED WIND SHIFT TO THE NORTH DURING EXPECT VOLUME. WIND 05006
thu	12-Jul-18	1300-1500	WIND 03012G20
thu	12-Jul-18	2030-2130	WIND 03011
fri	13-Jul-18		
sat	14-Jul-18		
sun	15-Jul-18	1030-1430	NORTH FLOW, ILS RWY 35L/35R, DPTG RWY 35L/35R, FOR CONVECTIVE WX. WIND 260@08
mon	16-Jul-18	1730-2130	NORTH FLOW, ILS RWY 35L/35R, DPTG RWY 35L/35R, WIND 3210G14
tue	17-Jul-18		
wed	18-Jul-18		
thu	19-Jul-18		
fri	20-Jul-18		
sat	21-Jul-18		
sun	22-Jul-18	0200-0630	NORTH FLOW, ILS RWY 35L/35R, DPTG RWY 35L/35R, WIND 29010
mon	23-Jul-18		
tue	24-Jul-18	1930-2130	WIND03012G15
wed	25-Jul-18	1530-1830	REMAINING NORTH DUE TO WIND 35012. WIND FORECAST TO DIMINISH AFTER 2200Z
thu	26-Jul-18	2030-2130	WIND 29010
fri	27-Jul-18	2030-2130	REMAINING NORTH DUE TO WIND ON SURFACE AND ALOFT FROM THE NORTH. WIND 33008. WIND AT 1000 FEET 34018
sat	28-Jul-18		
sun	29-Jul-18		
mon	30-Jul-18	0000-0430	WET RUNWAYS WIND 04010
tue	31-Jul-18	1300-1330	REMAINING NORTH DUE TO CONVECTIVE ACTIVITY APPROACHING THE FINALS FOR RWY 17R FROM THE SW. WIND 21008

Daily Runway Use Uncorrected (SDF) August 2018

Flow	Time	Wed 8/1	Thu 8/2	Fri 8/3	Sat 8/4	Sun 8/5	Mon 8/6	Tue 8/7	Wed 8/8	Thu 8/9	Fri 8/10	Sat 8/11	Sun 8/12	Mon 8/13	Tue 8/14	Wed 8/15	Thu 8/16	Fri 8/17	Sat 8/18	Sun 8/19	Mon 8/20	Tue 8/21	Wed 8/22	Thu 8/23	Fri 8/24	Sat 8/25	Sun 8/26	Mon 8/27	Tue 8/28	Wed 8/29	Thu 8/30	Fri 8/31	Time
North Flow	0:00																																0:00
	0:30																																0:30
	1:00																																1:00
	1:30																																1:30
	2:00																																2:00
	2:30																																2:30
South Flow	3:00																																3:00
	3:30																																3:30
	4:00																																4:00
	4:30																																4:30
	5:00																																5:00
	5:30																																5:30
	6:00																																6:00
	6:30																																6:30
	7:00																																7:00
	7:30																																7:30
	8:00																																8:00
	8:30																																8:30
North Flow	9:00																																9:00
	9:30																																9:30
	10:00																																10:00
	10:30																																10:30
	11:00																																11:00
	11:30																																11:30
South Flow	12:00																																12:00
	12:30																																12:30
	13:00																																13:00
	13:30																																13:30
	14:00																																14:00
	14:30																																14:30
	15:00																																15:00
	15:30																																15:30
	16:00																																16:00
	16:30																																16:30
	17:00																																17:00
	17:30																																17:30
	18:00																																18:00
North Flow	18:30																																18:30
	19:00																																19:00
	19:30																																19:30
	20:00																																20:00
	20:30																																20:30
	21:00																																21:00
	21:30																																21:30
	22:00																																22:00
	22:30																																22:30
	23:00																																23:00
	23:30																																23:30
	0:00																																0:00

Preferred Flow

DATIS Reported Conditions Indicate Support for Non-Preferred Flow

DATIS Reported Conditions Do Not Indicate Support for Non-Preferred Flow

South Flow is Preferred Flow from 09:30 Saturday - 09:30 Monday

X Complaint

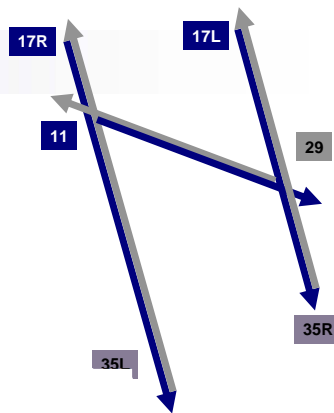
Source: Louisville International Airport
Aircraft Flight Tracking and Noise Management System (AFTNMS)

Daily Runway Use (SDF)

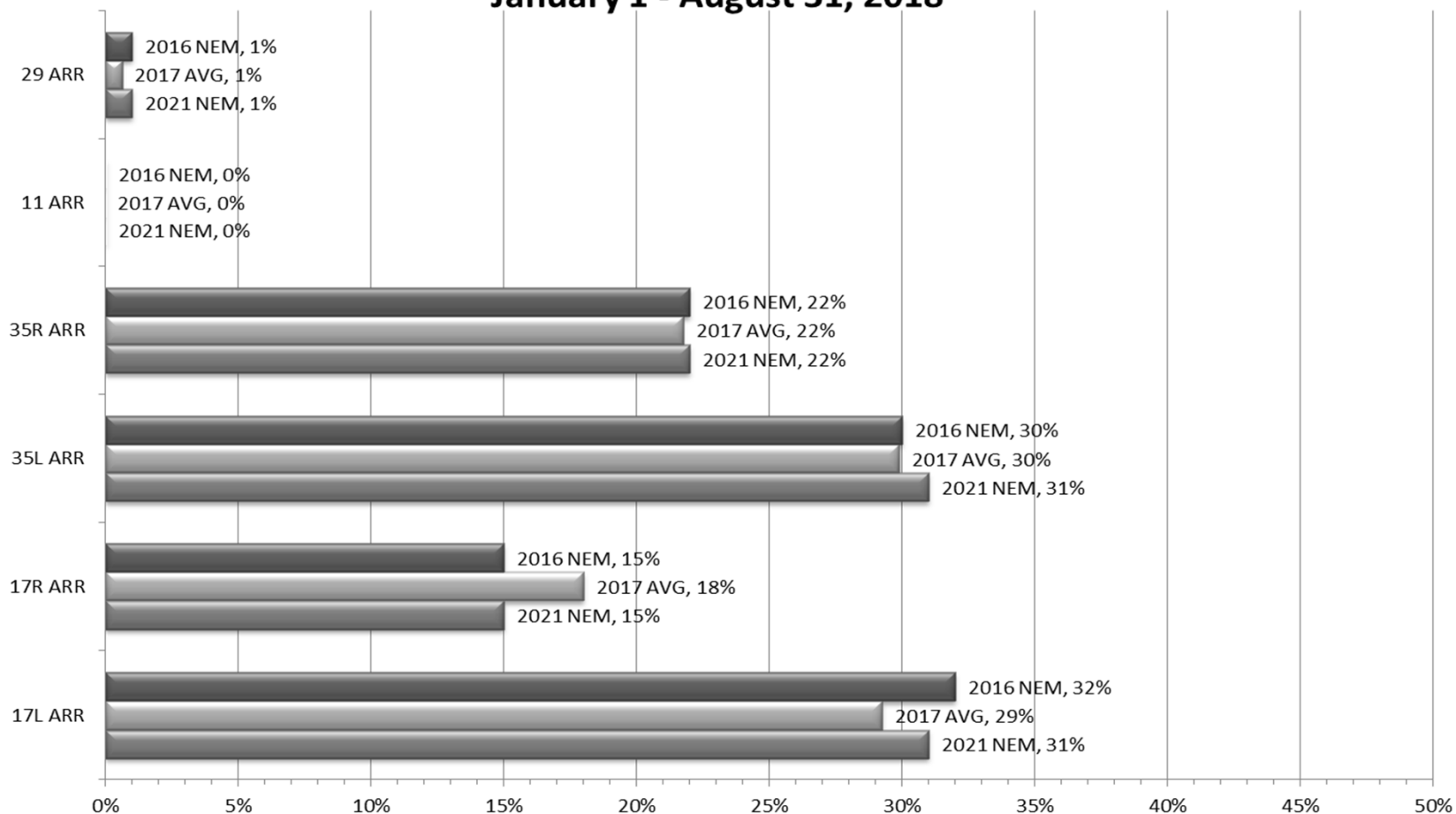
Tower Comments August 2018

Day	Date	Time	Comment
wed	1-Aug-18	1530-1600	SOUTH FLOW DUE TO WIND SHIFT, ILS RWY17L/17R, DPTG RWY 17L/17R, WIND12009
thu	2-Aug-18	0730-0900	NORTH FLOW, ILS RWY 35L/35R, DPTG RWY 35L/35R, WIND CALM. FLOW CHANGED EARLY DUE TO POSSIBLE CAT II/III OPERATIONS. VISIBILITY EXPECTED TO DECREASE.
fri	3-Aug-18		
sat	4-Aug-18		
sun	5-Aug-18		
mon	6-Aug-18		
tue	7-Aug-18	0930-1230	DUE TO APPROACHING CONVECTIVE ACTIVITY AND FORCAST WIND FROM THE SOUTH, SDF WILL REMAIN IN A SOUTH CONFIGURATION.
wed	8-Aug-18		
thu	9-Aug-18	1930-2130	WEST FLOW, VA RWY 29, DEPARTING RWY 29, WIND 32010.
fri	10-Aug-18	1300-1430	RWY 17L/35R UNAVAILABLE DISABLED AIRCRAFT ON THE RWY - missed the RWY change due to Aircraft emergency
sat	11-Aug-18		
sun	12-Aug-18	0730-1230	NORTH FLOW, ILS RWY 35R, DPTG RWY 35R, WIND 0410
mon	13-Aug-18	1200-1300	Late turning the RWYs around
tue	14-Aug-18		
wed	15-Aug-18	0930-1230	REMAINING SOUTH DUE CRACK REPAIR ON HIGH SPEED TWY'S NORMALLY USED DURING NORTH OPERATIONS AND CONVECTIVE ACTIVITY SOUTH OF SDF. WIND 22007
thu	16-Aug-18	0300-0700	NORTH FLOW, ILS RWY 35L/35R, DPTG RWY 35L/35R, WIND 1704, WX NORTH OF THE FIELD
fri	17-Aug-18		
sat	18-Aug-18		
sun	19-Aug-18		
mon	20-Aug-18	0000-0030	STAYING NORTH DUE TO WX NORTH OF THE FIELD.
tue	21-Aug-18	0930-1230	REMAINING SOUTH WIND 22008. WIND IS FORECAST TO BE 25012G19 BY 1500Z
wed	22-Aug-18	0300-0930	REMAINING NORTH WIND FORECAST TO BE 33009 WITHIN THE HOUR
thu	23-Aug-18	1300-1330	Late turning the RWYs around
fri	24-Aug-18		
sat	25-Aug-18		
sun	26-Aug-18		
mon	27-Aug-18	0930-1230	STAYING SOUTH FLOW RWY 17L DUE TO WINDS. WIND 21009KT
tue	28-Aug-18	0930-1230	Remained South WIND 2215
tue	28-Aug-18	2200-0000	17L/17R WIND 1906, winds at 2,000 ft. 21035
wed	29-Aug-18	0000-0230	17L/17R WIND 1906, winds at 2,000 ft. 21035
wed	29-Aug-18	0800-0900	NORTH FLOW, ILS RWY 35L/35R, DPTG RWY 35L/35R, WIND 21004. EARLY CHANGE TO ACCOMIDATE FLIGHT CHECK
thu	30-Aug-18	1300-1330	NORTH FLOW WIND 3510
thu	30-Aug-18	1900-2200	NORTH FLOW, ILS RWY 35L/35R, DPTG RWY 35L/35R, WIND 01008KT
fri	31-Aug-18	0930-1230	REMAINING SOUTH DUE TO TWY CLOSURES AT THE APPROACH END OF RWY 35R

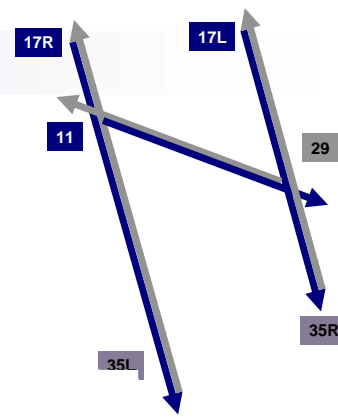
Runway Use (SDF Arrivals)



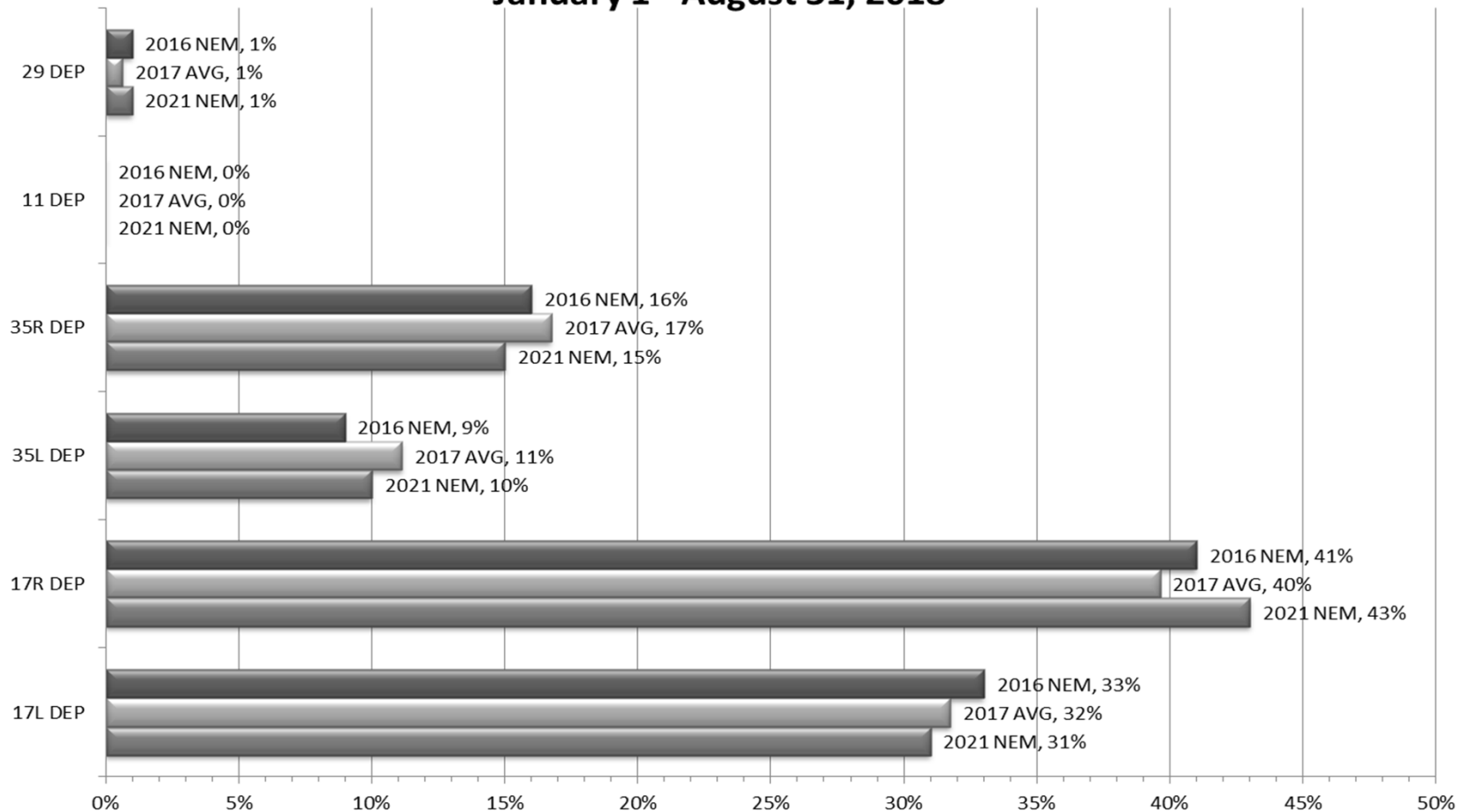
NEM vs. Actual
January 1 - August 31, 2018



Runway Use (SDF Departures)

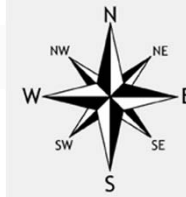


NEM vs. Actual
January 1 - August 31, 2018



Runway Use 0930L-1230L_(SDF)

As of August 31, 2018

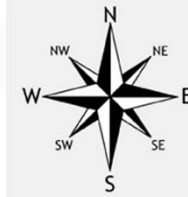


	Arrival Percentage by Runway								Departure Percentage by Runway							
	11	17L	17R	29	35L	35R	% From South	Arrival Count	11	17L	17R	29	35L	35R	% To North	Departure Count
Jul-16	0	17	30	1	32	20	52	723	0	17	27	2	14	40	54	394
Aug-16	0	14	46	0	21	19	40	845	0	18	35	1	13	33	46	404
Sep-16	0	14	27	0	37	22	59	856	0	14	22	0	9	55	64	399
Oct-16	0	16	35	0	24	25	49	803	0	19	25	1	0	55	55	393
Nov-16	0	27	31	0	24	18	42	912	0	26	30	0	1	43	44	394
Dec-16	0	9	6	3	52	30	82	1090	0	9	11	3	10	67	77	429
Jan-17	0	17	22	6	32	23	55	871	0	15	17	5	6	57	63	365
Feb-17	0	21	27	0	28	24	52	815	0	23	28	0	3	46	49	363
Mar-17	0	25	16	0	35	24	59	943	0	23	23	0	11	43	54	395
Apr-17	0	16	49	1	22	12	34	836	1	19	38	5	10	27	37	397
May-17	0	28	20	0	30	22	52	1027	0	29	16	0	13	42	55	460
Jun-17	0	29	28	0	16	27	43	960	0	24	34	1	10	31	41	435
Jul-17	0	30	28	0	23	19	42	866	0	28	20	2	6	44	50	377
Aug-17	0	15	24	0	42	19	61	1001	0	20	18	0	10	52	62	453
Sep-17	0	10	6	1	45	38	83	903	0	14	3	2	12	69	81	495
Oct-17	0	21	24	0	29	26	55	936	0	25	18	1	9	47	56	451
Nov-17	0	20	23	0	25	32	57	956	0	19	21	0	9	51	60	439
Dec-17	0	10	11	0	49	30	79	1064	1	9	13	1	16	60	76	510
Jan-18	0	27	19	5	31	18	49	862	0	24	18	5	6	47	53	329
Feb-18	0	19	32	1	28	20	48	847	0	19	24	1	6	50	56	323
Mar-18	0	11	24	0	38	27	65	922	0	14	19	2	11	54	65	399
Apr-18	0	18	19	0	36	27	63	894	1	19	13	8	9	50	59	382
May-18	0	31	29	1	22	17	39	1114	0	28	28	1	4	38	42	481
Jun-18	0	38	17	0	23	22	45	920	0	44	41	0	4	10	14	433
Jul-18	0	10	10	0	48	32	80	884	0	7	11	1	17	65	82	415
Aug-18	0	17	32	0	30	21	51	889	0	18	21	1	3	55	58	387
Monthly Avg.	0	18	24	1	33	24	57	913	0	19	21	2	10	48	58	412

Source: Louisville International Airport
Aircraft Flight Tracking and Noise Management System (AFTNMS)

Gate Compliance by Runway

As of August 31, 2018

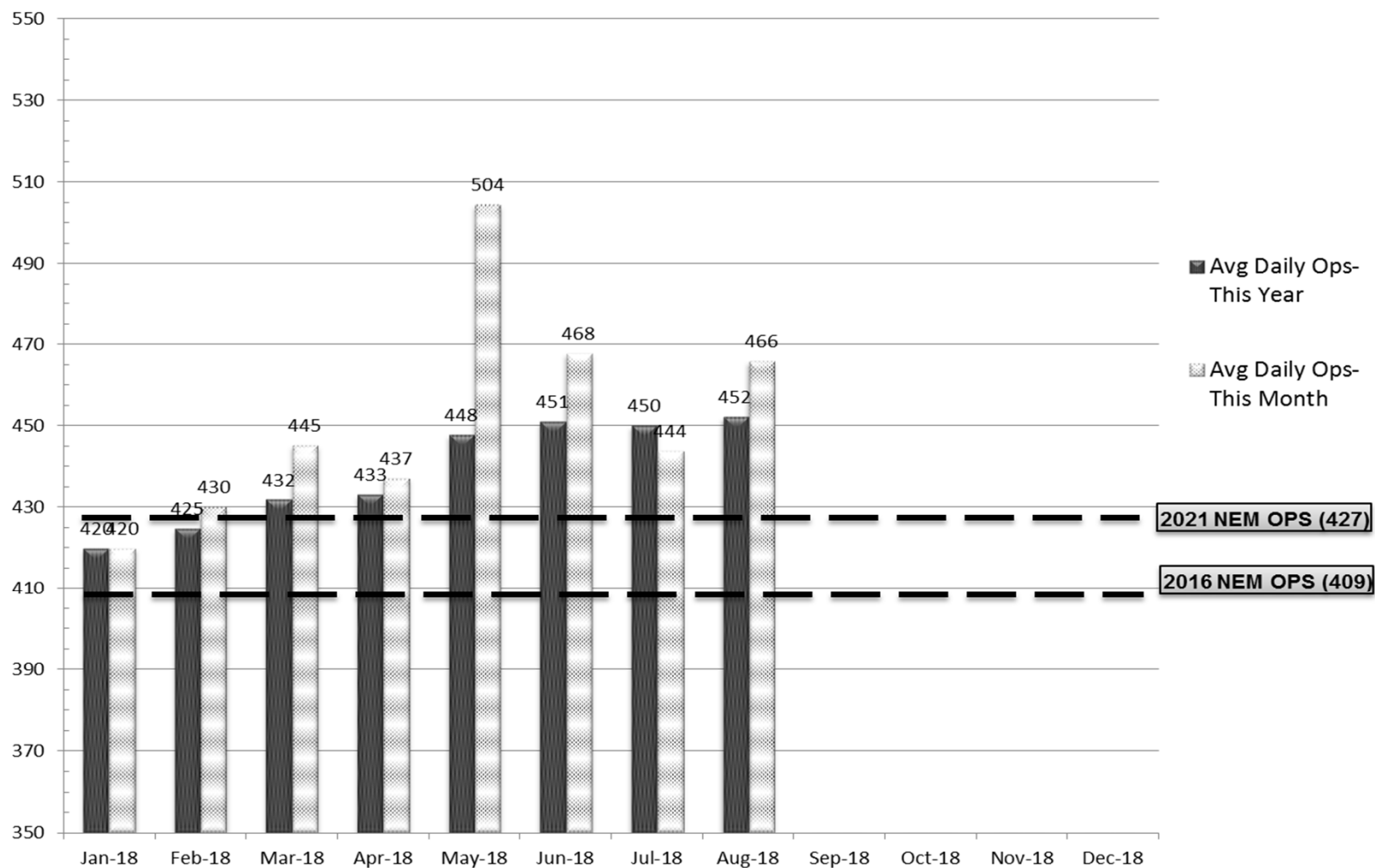


	ARRIVALS Percent Compliant					Departure Percent Compliant				
Month	17L	17R	35L	35R	ARR AVG	17L	17R	35L	35R	DEP AVG
Sep-16	80%	91%	89%	89%	87%	84%	90%	61%	88%	81%
Oct-16	82%	92%	86%	86%	87%	82%	90%	74%	90%	84%
Nov-16	84%	94%	90%	86%	89%	78%	89%	70%	88%	81%
Dec-16	89%	94%	92%	92%	92%	80%	87%	74%	80%	80%
Jan-17	88%	96%	93%	92%	92%	66%	91%	78%	84%	80%
Feb-17	87%	95%	91%	88%	90%	72%	92%	81%	87%	83%
Mar-17	87%	96%	90%	89%	91%	70%	89%	72%	88%	80%
Apr-17	86%	94%	87%	92%	90%	69%	86%	76%	85%	79%
May-17	86%	90%	90%	89%	89%	72%	90%	67%	84%	78%
Jun-17	87%	87%	87%	88%	87%	79%	91%	69%	87%	82%
Jul-17	87%	92%	90%	90%	90%	81%	89%	67%	86%	81%
Aug-17	84%	93%	90%	87%	89%	80%	84%	73%	91%	82%
Sep-17	87%	91%	88%	90%	89%	91%	90%	74%	85%	85%
Oct-17	88%	95%	89%	88%	90%	80%	87%	77%	89%	83%
Nov-17	88%	94%	91%	91%	91%	76%	90%	67%	91%	81%
Dec-17	88%	95%	92%	92%	92%	77%	89%	73%	86%	81%
Jan-18	89%	96%	92%	91%	92%	71%	91%	71%	85%	80%
Feb-18	90%	97%	93%	91%	93%	69%	87%	70%	83%	77%
Mar-18	91%	94%	92%	90%	92%	76%	87%	68%	81%	78%
Apr-18	90%	95%	91%	88%	91%	80%	88%	71%	83%	81%
May-18	86%	91%	85%	86%	87%	78%	86%	68%	86%	80%
Jun-18	87%	92%	87%	85%	88%	82%	84%	72%	85%	81%
Jul-18	86%	90%	87%	88%	88%	88%	88%	70%	85%	83%
Aug-18	88%	94%	88%	85%	89%	81%	88%	69%	88%	82%
24 Month Avg.					90%					81%

Source: Louisville International Airport
Aircraft Flight Tracking and Noise Management System (AFTNMS)

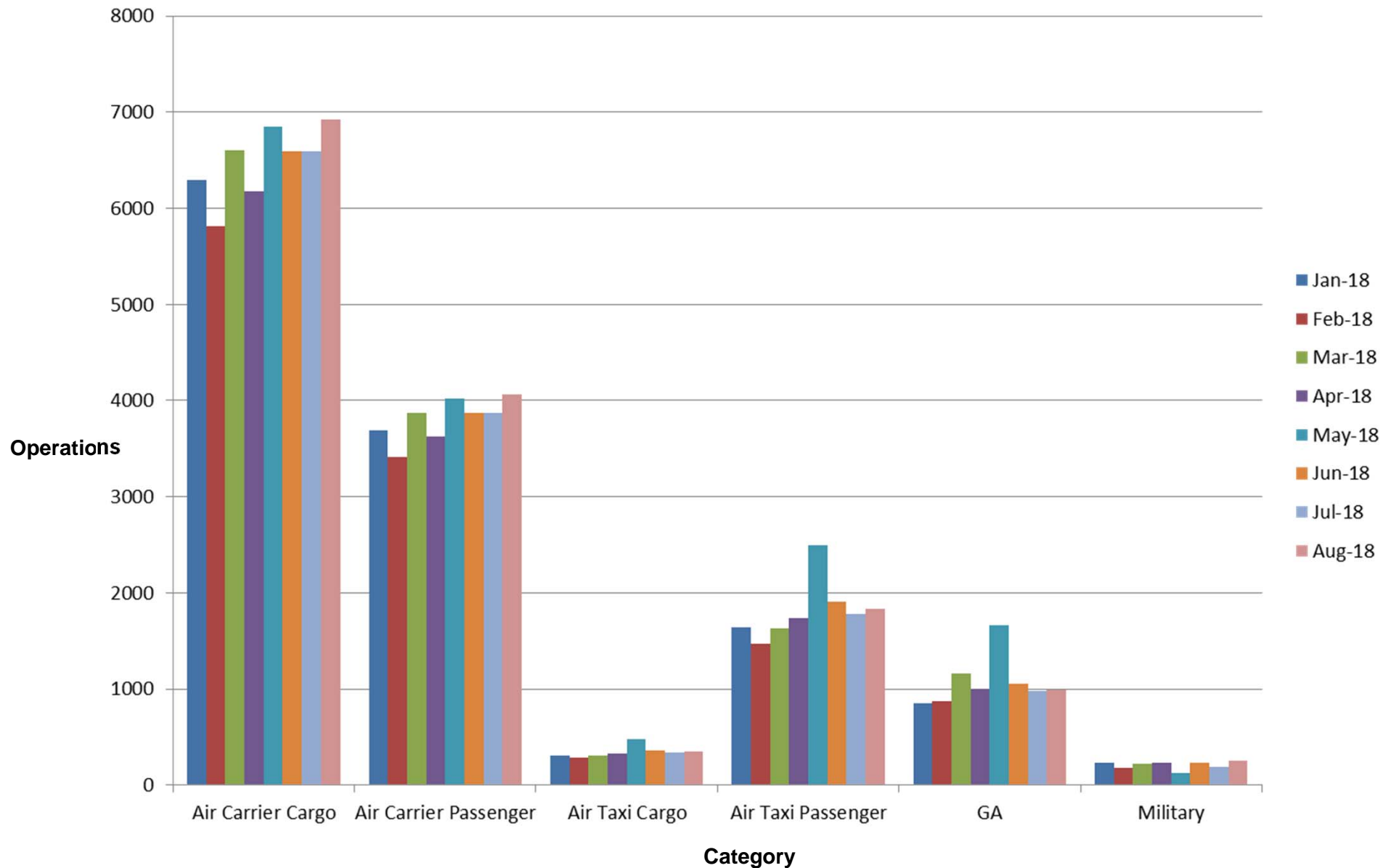
Operations (SDF)

As of August 31, 2018

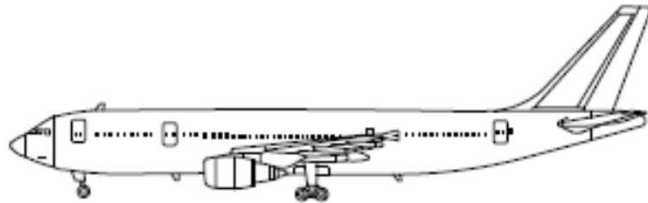


Operations by Aircraft Category (SDF)

As of August 31, 2018



Sample Aircraft Types (SDF)



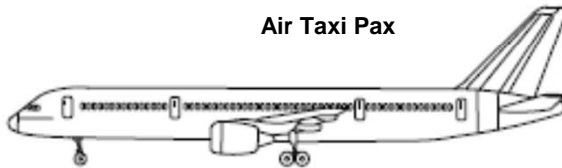
A300
Air Carrier Cargo



B767
Air Carrier Cargo



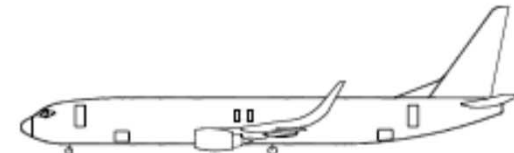
E135/45
Air Taxi Pax



B757
Air Carrier Cargo



MD11
Air Carrier Cargo



B737
Air Carrier Pax



CRJ2
Air Taxi Pax



E170
Air Carrier Pax



MD80
Air Carrier Pax



CRJ9
Air Carrier Pax