

Community Noise Forum
Monday, January 25, 2016
Agenda

- I. Call to order: 6:00PM
- II. Minutes of November 23, 2015.
- III. Part 150 NCP
 - A. Update: Noise Insulation Program
 - B. Contraflow Exceptions
- IV. Current Noise Concerns
 - A. Noise Concerns/Complaints
 - B. Runway Utilization
 - C. Construction and Maintenance Activity
- V. Announcements
- VII. Next Meeting: March 28, 2016
- VIII. Adjournment

COMMUNITY NOISE FORUM (CNF)
Monday, November 23, 2015

Members

John Sistarenik, ANA
Pete Levermore, Airline Airfares
Mary Rose Evans, LRAA Board
Brian Sinnwell, LRAA
Bob Slattery, LRAA

Verna Goatley, Metro
Ken Dietz, UofL
Pat Gould, Northeast
Mike Zanone, Northwest

Guests

Julie Heim
Debbie Borens
Tom Foote, UPS
Kathy Key
Greg Key
Jewell Shane, BNA
Jonathan Shane, BNA
Mary Purple, BNA
Wakeley Purple, BNA

Dorn Crawford, Audubon Park
Lee Kines, BNA
Tom Denton, BNA
Nancy Bowmon-Denton, BNA
Shane Smith, Schnitzelburg/SACC
Sean Doyle, HMMH
Gene Reindel, HMMH
Tony Derricks, C&S
Paul DeSpain

The meeting was called to order at 6:00 p.m. by John Sistarenik. A motion to approve the meeting notes for the September meeting as written was made by Pat Gould and seconded by Verna Goatley.

John Sistarenik suspended Oral reports on agenda items due to the holiday meeting. Information is contained in the handout and if you would like additional information or have questions you can contact Bob Slattery.

Mary Rose Evans gave an update on the legislation that would reimburse homeowners in the ≥ 60 DNL contour for sound insulation that they did on their own homes. Representative Jim Wayne is sponsoring the bill and has filed Bill Request 442 (BR-442). Mary Rose made a motion that the Community Noise Forum (CNF) draft and submit a resolution in support of BR-442. The motion was seconded by Mike Zanone and unanimously approved by the committee.

Part 150 NCP:

- A. Update:** Noise Insulation Program. See handout.
- B. Contraflow Exceptions:** See handout.

Current Noise Concerns:

A. Report on Noise Concerns/Complaints: See handout.

B. Runway Utilization: See handout.

C. Construction and Maintenance Activity: See handout.

A presentation was given by Gene Reindel and Sean Doyle of HMMH on the Noise Exposure Map Update. The focus of the presentation was informing the group about the process and requirements for updating the Noise Exposure Maps for Louisville International Airport.

FlyQuiet awards for 2015 were presented to C&S Engineers and Pete Levermore. C&S Engineers was recognized for their exemplary performance in handling the QuieterHome Program for Louisville International Airport. Since 2007 C&S has provided project management services for the QuieterHomes program. Primary responsibilities included architectural, engineering, and construction management services as well as community outreach. Tony Derricks accepted the award for C&S. Pete Levermore was also recognized for his dedication to the CNF. Pete is the Airport Properties manager for UPS Airlines and was an original member of Noise Compatibility Study Group where he served on several committees and was Co-Chair of the Environmental Committee. Pete has represented UPS and Airlines on the CNF and has served as Vice Chairman since the group's first meeting in 2003. He is also active in airport noise issues at other airports across the country.

Announcements: None.

Guest Comments: None.

Next Meeting: Monday, January 25, 2016 at 6 p.m.

Adjournment: A motion was made to adjourn the meeting at 7:10 p.m.



COMMUNITY NOISE FORUM

Louisville Regional Airport Authority
PO Box 9129
Louisville, KY 40209-0129
cnf@flylouisville.com

COMMUNITY NOISE FORUM LOUISVILLE INTERNATIONAL AIRPORT LOUISVILLE, KENTUCKY

A RESOLUTION ENDORSING A KENTUCKY GENERAL ASSEMBLY BILL REQUEST TO ESTABLISH A TAX CREDIT FOR QUALIFYING NOISE REDUCTION HOME IMPROVEMENTS

WHEREAS, The Community Noise Forum is charged with monitoring the Noise Compatibility Program for Louisville International Airport and represents airport stakeholders, including the Louisville Regional Airport Authority Board of Directors and management, SDF Air Traffic Control staff, Louisville Airport Affairs Committee, Kentucky Air National Guard, UPS, SDF general aviation community, University of Louisville, Louisville Metro Government, Airport Neighbors' Alliance (ANA), and community representatives from each quadrant of Louisville bounding the airport and from southern Indiana; and

WHEREAS, noise exposure maps produced in the course of FAA-approved noise compatibility studies and subsequent updates reflect noise contours that continue to exceed Federal standards; and

WHEREAS, those residing in the noise contour next below the Federal threshold for incompatibility with residential use remain exposed to excessive event noise resulting from intensive nighttime operations; and

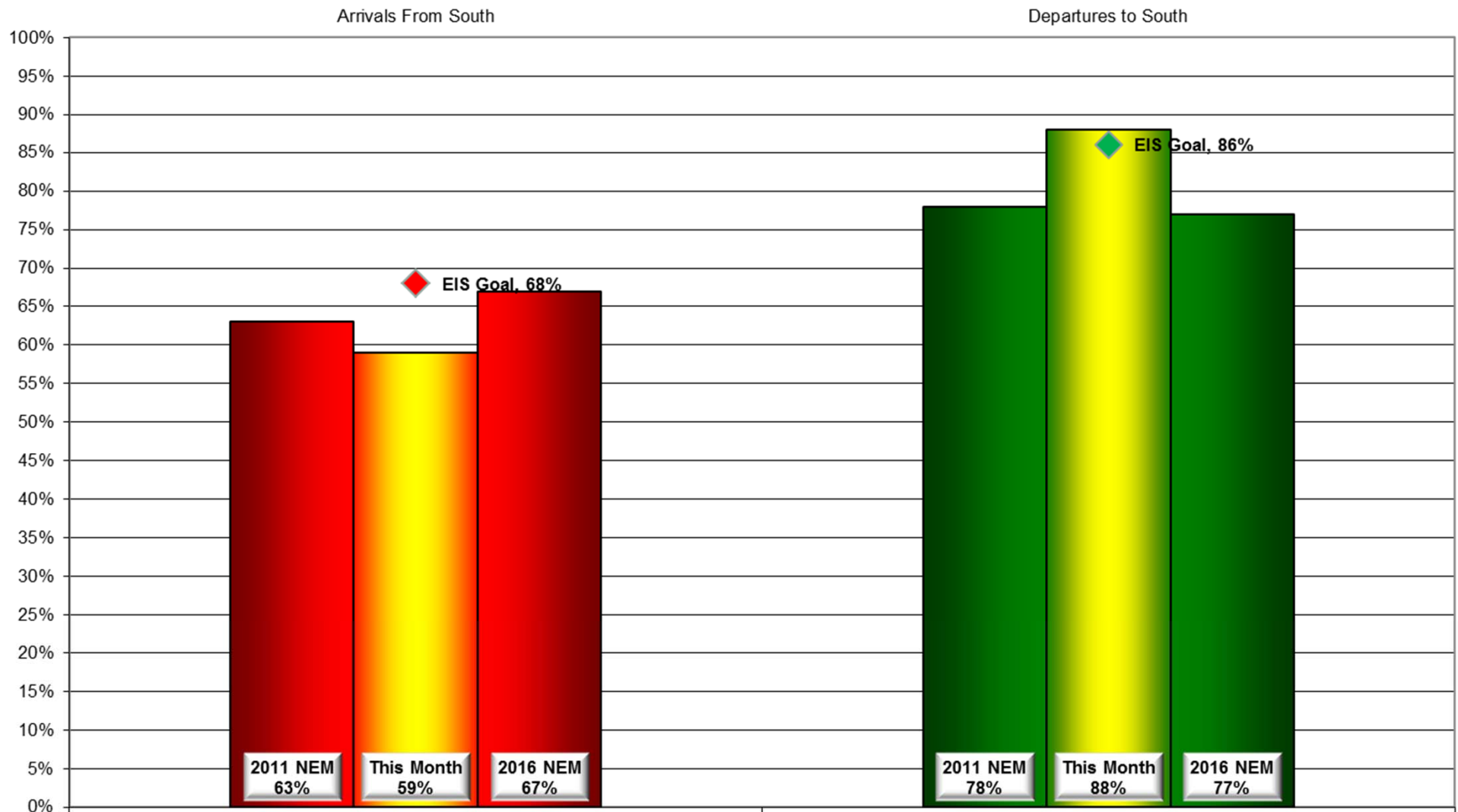
WHEREAS, a General Assembly bill request has been drafted to provide means for affected property owners to achieve interior noise relief by awarding tax credits for qualifying noise insulation home improvements undertaken without Federal support;

NOW, THEREFORE, BE IT RESOLVED BY THE COMMUNITY NOISE FORUM to express its strong support of the proposed measure to provide tax credits for qualifying noise reduction measures, and its commitment to participate in providing whatever background information, analysis and commentary is necessary to promote Committee and General Assembly passage of this measure.

Approved by Unanimous Consent
November 23, 2015


John Sistarenik, Chairman

Monthly Contraflow November 2-30, 2015



Daily Runway Use Summary - November 2015

(from 10:00 PM date list in first column to 7:00 AM the following morning)

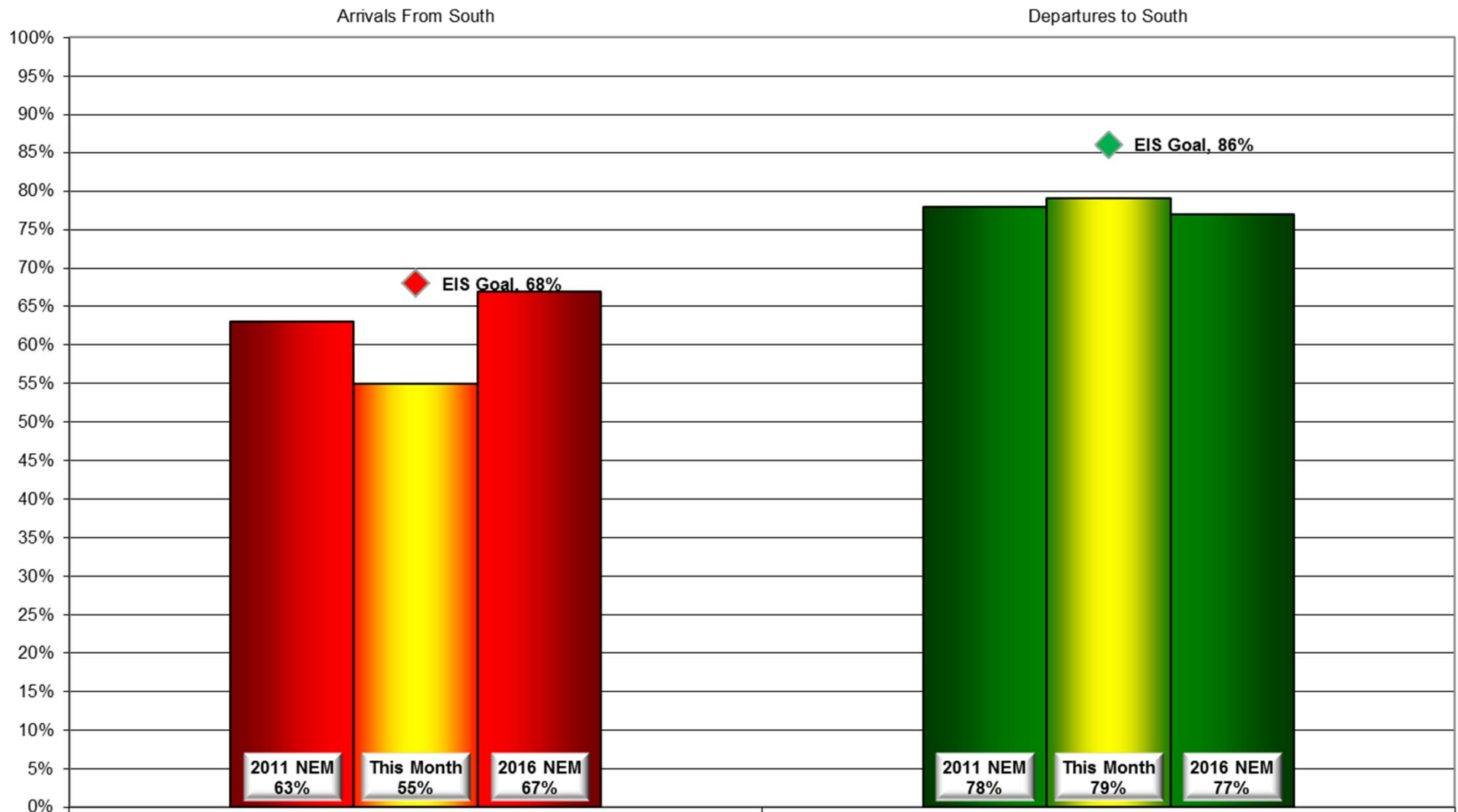
		% of all arrivals from the south										% of all departures to the south											
Date	Day	* in	Runway #						Unknown	Notes /		** in	Runway #						Unknown	Notes /			
		compliance	11	17L	17R	29	35L	35R	Runway				Use	compliance	11	17L	17R	29	35L			35R	Runway
11/02/15	Mon	96%			2	2			59	37	0		93%			31	62			2	5	0	
11/03/15	Tue	94%			5	1			54	40	0		96%			35	61			1	3	0	
11/04/15	Wed	90%			6	4			60	30	0		97%			39	58			3		0	
11/05/15	Thu	1%			47	52				1	0	160-190@9-11knts	72%			30	42			17	11	0	
11/06/15	Fri	100%							61	39	0		0%							58	42	0	350-360@6-12knts
11/07/15	Sat																						
11/08/15	Sun																						
11/09/15	Mon	97%			2	1			57	40	0		94%			39	55			3	3	0	
11/10/15	Tue	94%			5	1			58	36	0		98%			39	59			1	1	0	
11/11/15	Wed	0%			44	56					0	140-200@6-12knts,RA	99%			40	59		1			0	
11/12/15	Thu	99%			1				60	39	0		56%			21	35			18	26	0	270-290@8-11knts
11/13/15	Fri	95%			3	2			64	31	0		95%			47	48				5	0	
11/14/15	Sat																						
11/15/15	Sun																						
11/16/15	Mon	95%			3	2			55	40	0		94%			37	57			3	3	0	
11/17/15	Tue	0%			44	56					0	110-130@8-9knts	100%			42	58					0	
11/18/15	Wed	0%			43	57					0	190-220@9-10knts,G14	99%			40	59			1		0	
11/19/15	Thu	96%			2	2			56	40	0		94%			40	54			2	4	0	
11/20/15	Fri	0%			52	48					0	110-140@5-6knts	100%			41	59					0	
11/21/15	Sat																						
11/22/15	Sun																						
11/23/15	Mon	99%				1			60	39	0		90%			35	55			6	4	0	
11/24/15	Tue	81%			7	12			43	38	0		95%			34	61			2	3	0	
11/25/15	Wed	0%			40	60					0	130-150@4-7knts	100%			26	74					0	
11/26/15	Thu	0%			4	96					0	130-170@4-6knts	100%			36	64					0	
11/27/15	Fri	0%			50	50					0	120-140@4-5knts,RA	100%			39	61					0	
11/28/15	Sat																						
11/29/15	Sun																						
11/30/15	Mon	94%			5	1			58	36	0		79%			35	44			13	8	0	320@5knts,RA

Preferred Flow

DATIS Reported Conditions Indicate
Support for Non-Preferred Flow

DATIS Reported Conditions Do Not Indicate
Support for Non-Preferred Flow

Monthly Contraflow December 1-31, 2015



Daily Runway Use Summary - December 2015

(from 10:00 PM date list in first column to 7:00 AM the following morning)

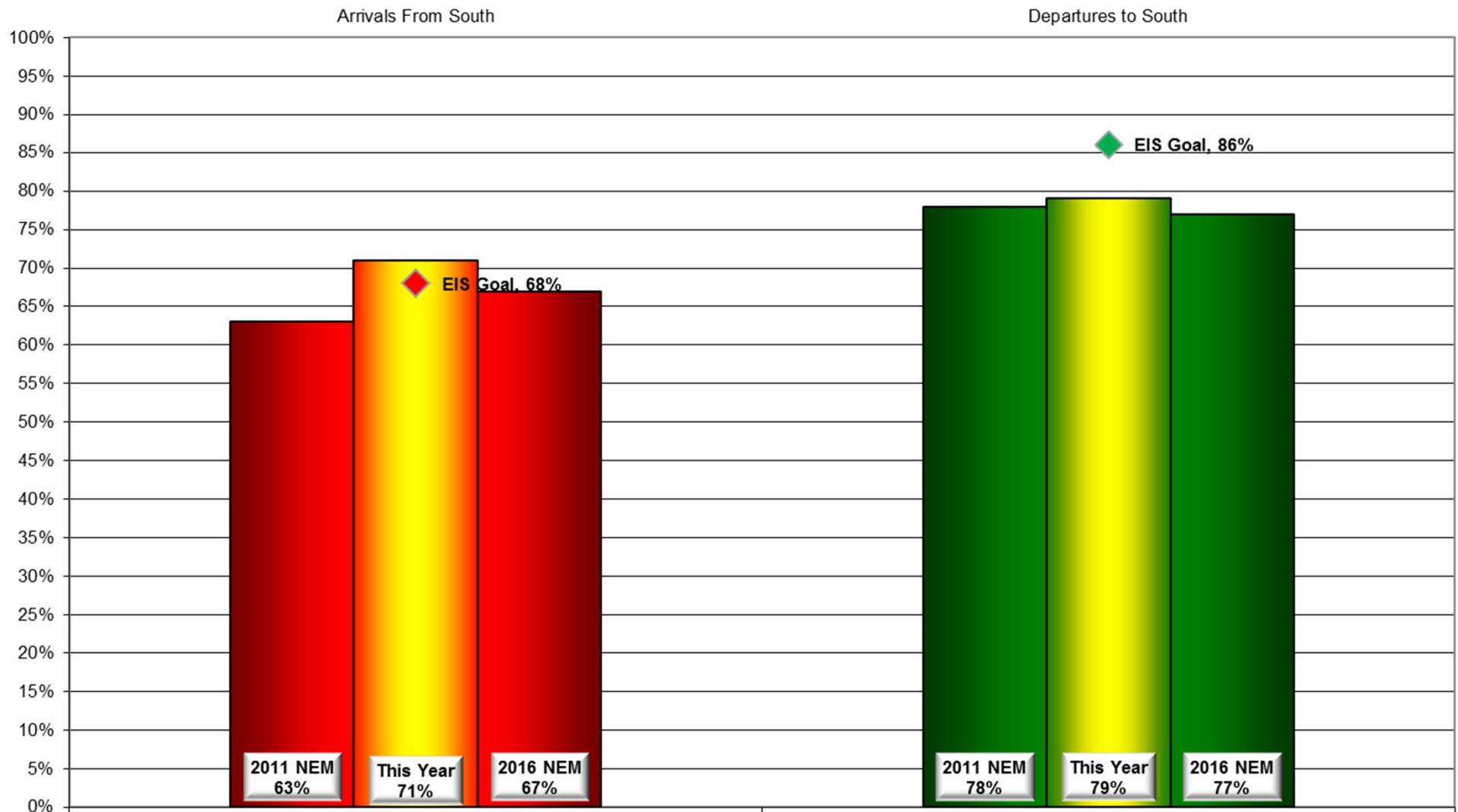
		% of all arrivals from the south										% of all departures to the south											
Date	Day	* in	Runway #						Unknown	Notes /	Comments	** in	Runway #						Unknown	Notes /	Comments		
		compliance	11	17L	17R	29	35L	35R	Runway				Use	compliance	11	17L	17R	29	35L			35R	Runway
12/01/15	Tue	95%			4	1			56	39	0		93%			34	59			5	2	0	
12/02/15	Wed	96%			3	1			56	40	0		89%			35	54			8	3	0	
12/03/15	Thu	98%			2				56	42	0		89%			36	53			7	4	0	
12/04/15	Fri	100%							63	37	0		0%							61	39	0	350-020@3-6knts
12/05/15	Sat																						
12/06/15	Sun																						
12/07/15	Mon	98%			1	1			60	38	0		88%			34	54			9	3	0	
12/08/15	Tue	0%			47	53					0	130-140@4-7knts	99%			42	57				1	0	
12/09/15	Wed	96%			3	1			61	35	0		94%			40	54			4	2	0	
12/10/15	Thu	85%			11	4			52	33	0		90%			35	55			8	2	0	
12/11/15	Fri	0%			47	53					0	170-180@7-10knts	100%			35	65					0	
12/12/15	Sat																						
12/13/15	Sun																						
12/14/15	Mon	0%			47	52		1			0	240-250@10-18knts,G23	100%			38	62					0	
12/15/15	Tue	92%			4	4			56	36	0		92%			38	54			7	1	0	
12/16/15	Wed	19%			37	44			13	6	0	210-300@8-15knts,G22	4%			2	2			57	39	0	310-330@7-13knts
12/17/15	Thu	100%							59	41	0		0%							58	42	0	290-320@7-8knts
12/18/15	Fri	0%			48	52					0	220-240@6-12knts	100%			33	67					0	
12/19/15	Sat																						
12/20/15	Sun																						
12/21/15	Mon	0%			52	48					0	170-190@6-13knts,G19,RA	100%			40	60					0	
12/22/15	Tue	0%			48	52					0	120-150@4-7knts	100%			42	58					0	
12/23/15	Wed	2%			40	58				2	0	230@8-12knts	42%			15	27			34	24	0	250-320@6-14knts,G19
12/24/15	Thu	0%			35	65					0	130-150@3-5knts	100%			29	71					0	
12/25/15	Fri	82%			18				73	9	0		95%			37	58			1	4	0	
12/26/15	Sat																						
12/27/15	Sun																						
12/28/15	Mon	0%			44	56					0	240-260@11-15knts,G28	100%			42	58					0	
12/29/15	Tue	97%			1	2			56	41	0		90%			38	52			7	3	0	
12/30/15	Wed	98%			1	1			57	41	0		90%			31	59			3	7	0	
12/31/15	Thu	96%			3	1			62	34	0		64%			9	55			18	18	0	240-300@4-8knts (14)

Preferred Flow

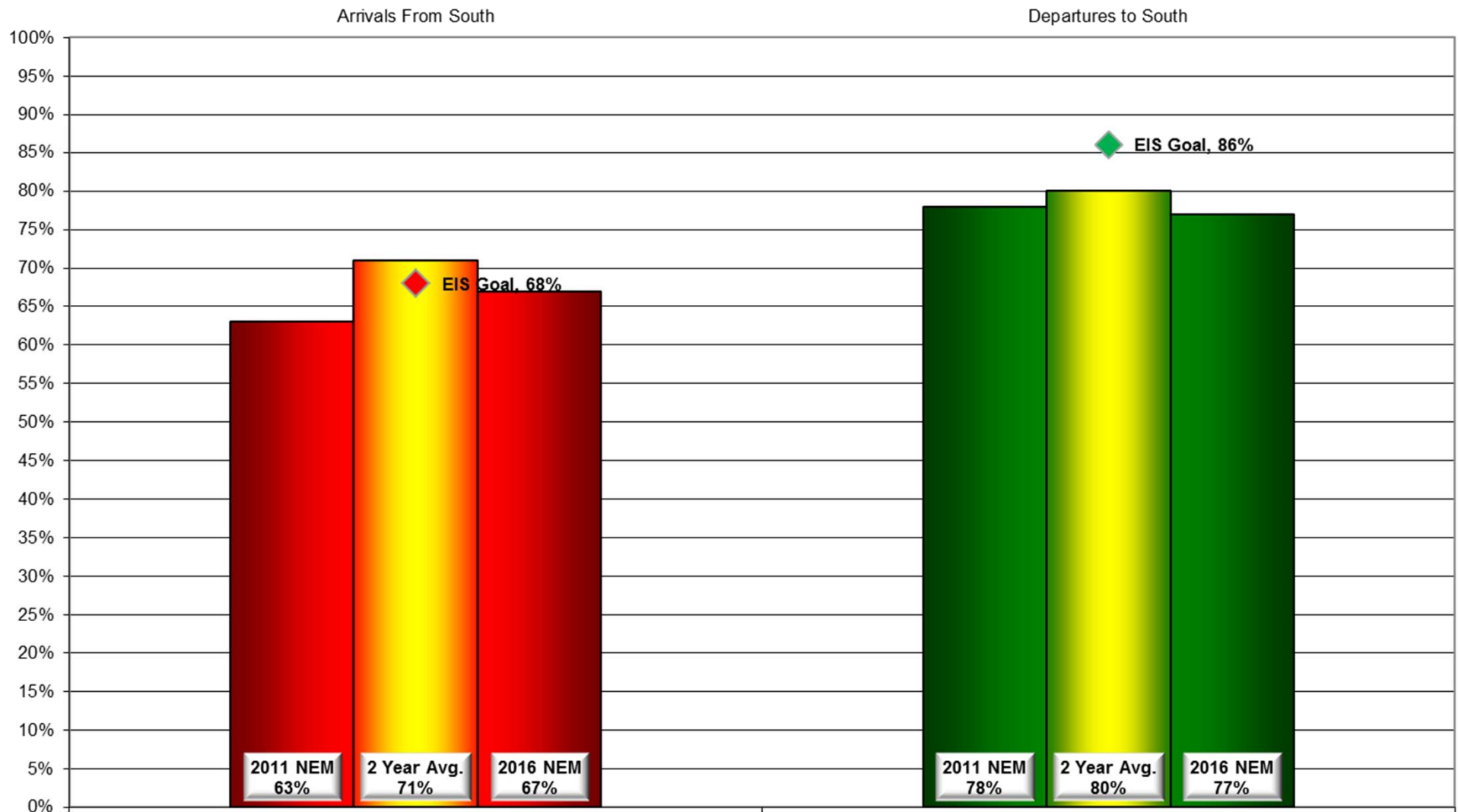
DATIS Reported Conditions Indicate
Support for Non-Preferred Flow

DATIS Reported Conditions Do Not Indicate
Support for Non-Preferred Flow

Contraflow This Year As of December 31, 2015



Contraflow 2 Year Average January 2014 - December 2015



Year-to-Year by Month Percent* Contraflow

Arrivals From the South (Goal 68%)										Departures to the South (Goal 86%)									
	2008	2009	2010	2011	2012	2013	2014	2015	Avg		2008	2009	2010	2011	2012	2013	2014	2015	Avg
Jan	50%	63%	94%	91%	62%	72%	51%	76%	70%	Jan	80%	74%	54%	71%	80%	65%	81%	76%	73%
Feb	50%	49%	90%	73%	69%	77%	72%	66%	68%	Feb	74%	81%	71%	63%	74%	78%	71%	76%	74%
Mar	52%	46%	80%	52%	61%	87%	60%	71%	64%	Mar	68%	67%	82%	72%	96%	77%	77%	66%	76%
Apr	44%	53%	57%	47%	78%	60%	67%	53%	57%	Apr	92%	84%	84%	83%	76%	89%	83%	77%	84%
May	66%	66%	56%	69%	72%	46%	60%	75%	64%	May	78%	84%	87%	85%	81%	85%	92%	80%	84%
Jun	38%	72%	66%	61%	79%	76%	75%	57%	66%	Jun	93%	81%	96%	93%	87%	80%	91%	91%	89%
Jul	75%	72%	61%	91%	62%	74%	79%	74%	74%	Jul	84%	82%	90%	88%	92%	88%	85%	80%	86%
Aug	92%	61%	59%	82%	49%	84%	61%	86%	72%	Aug	77%	96%	92%	91%	91%	92%	92%	91%	90%
Sep	91%	89%	70%	85%	55%	86%	85%	95%	82%	Sep	73%	82%	73%	64%	92%	87%	86%	73%	79%
Oct	76%	42%	80%	88%	62%	87%	75%	86%	75%	Oct	77%	71%	78%	63%	78%	89%	79%	74%	76%
Nov	66%	74%	85%	55%	84%	73%	78%	59%	72%	Nov	74%	73%	77%	72%	81%	83%	62%	88%	76%
Dec	58%	71%	67%	70%	64%	58%	78%	55%	65%	Dec	62%	65%	78%	65%	67%	71%	68%	79%	69%
Avg	63%	63%	72%	72%	66%	73%	70%	71%		Avg	78%	78%	80%	76%	83%	82%	81%	79%	

*Number is percentage of all operations between 10:00 PM - 7:00 AM



***LOUISVILLE
REGIONAL
AIRPORT
AUTHORITY®***

NOISE COMMENT REPORT
November 2015

Comments (SDF/LOU)

November 2015

Street	Zip Code	Time Received	Time	Airport	Disturbance Type	CNF Quad	Status	Operation or Comment Type ¹	Deviation Type ²	Comments
Maple Ct	40214	2015-11-03 09:58:13	2015-11-03 09:58:13	SDF	Other	NW	Investigated	LQHP	None	Homeowner's son called because he heard about our program. He wanted some more information about what the program was about and asked if there was a website that he could go to and see the boundary lines.
Fayette AV	40213	2015-11-18 09:58:13	2015-11-18 09:58:13	SDF	Other	NE	Investigated	LQHP	None	Homeowner called to ask about a change in the NEM because she is on the border and wants to be in the program. She also asked about a news program she saw on TV.
Fayette AV	40213	2015-11-19 10:24:43	2015-11-19 10:24:43	SDF	Other	NE	Investigated	LQHP	None	All the homes around me have been done. I am so much closer than Audubon and should have been done. There was something on the news this past week and I would like to know about the update that was supposed to be in 2016.
							Received	LQHP	3	
Dixon Ave	40217	2015-11-06 08:54:00	2015-11-06 08:54:00	SDF	Other	NE	Investigated	Standard	None	Do you have any information on the tax credit for sound proofing airport noise pollution? I am just trying to figure out the status of the bill, how the program will be structured, etc. I am not included in the QuieterHome Program. However, I am afflicted by regular disruptions from the airport at all hours (on Dixon Ave), so I am looking for some assistance in getting windows replaced.

1. **Standard:** Indicates the "Most Preferred" runway configuration was being utilized at the time of the comment.
Non Standard: Indicates that a "Lesser Preferred" runway configuration was being utilized at the time of the comment.
QHP: QuieterHome Program

2. This column is used to indicate the conditions which most likely necessitated a deviation from the standard procedures.

Comments (SDF/LOU)

November 2015

Street	Zip Code	Time Received	Time	Airport	Disturbance Type	CNF Quad	Status	Operation or Comment Type ¹	Deviation Type ²	Comments
Carlolia Dr	47130	2015-11-07 05:38:42	2015-11-07 05:00:42	SDF	Too Much Noise	SI	Investigated	Non-Standard	Weather	I am trying to find out how to file a complaint about airport noise. The last two nights I have been woken up by airplanes over my house. They are UPS planes I can see from the airport track that they are coming up out of the airport going north and instead of continuing along the noise corridor they are turning right going east over our houses here in Jeffersonville. So I want to know how to file a complaint. My phone number is 502-XXX-XXXX and it is every two minutes that the UPS planes are coming over. I have been woken up again and it is now 5:36 A.M. and yet another plane is coming over and it has been going on for the last forty minutes. So I know it is weather related but it has gotten a lot worse because these guys think that revving their engines even harder before they are at altitude is an ok practice. Before we get even farther into the holiday delivery season I want UPS to be told that they are disturbing residents by this practice again.
Taylorville Rd	40205	2015-11-09 15:03:00	2015-11-09 15:03:00	LOU	Other	NE	Investigated	Standard	None	Do you have a noise map or report for Bowman Field? Also, are the eleven jets at the airport private or military?
Pineland DR	40219	2015-11-12 04:37:00	2015-11-12 04:00:00	SDF	Aircraft Off Course	SE	Investigated	Standard	Weather	It is 4:36 in the morning and I have a whole list where the airplanes are flying straight over our house. There should not be an excuse.
Pineland DR	40219	2015-11-12 11:00:00	2015-11-12 04:13:00	SDF	Aircraft Off Course	SE	Investigated	Standard	Weather	Between 4:13 and 5:13 this morning the planes were going directly over this area and weaving very bad due to the winds.

1. **Standard:** Indicates the “Most Preferred” runway configuration was being utilized at the time of the comment.
Non Standard: Indicates that a “Lesser Preferred” runway configuration was being utilized at the time of the comment.
QHP: QuieterHome Program

2. This column is used to indicate the conditions which most likely necessitated a deviation from the standard procedures.

Comments (SDF/LOU)

November 2015

Street	Zip Code	Time Received	Time	Airport	Disturbance Type	CNF Quad	Status	Operation or Comment Type ¹	Deviation Type ²	Comments
Glenhope Dr	40291	2015-11-12 11:01:00	2015-11-12 09:00:00	SDF	Too Much Noise	SE	Investigated	Non-Standard	Weather	I lived on Dahl Road off East Indian Trail and Preston Hwy for 53 years. When the Louisville International Airport used the east runway for landings, the noise was unbearable. You could see the passengers in the widows when they landed. Also, you could not talk to a neighbor while the planes were landing. Then the Louisville International Airport built and started using the north and south runways, which solved most of the noise problems. Occasionally the winds caused the airport to use the east/west runway. I moved and have now lived in the Glenmary subdivision off Bardstown Road near the Gene Snyder for a year. It has been so quiet here. There has never been an aircraft noise problem until today, Thursday, Nov 12 from 9-11 a.m. The aircraft have been flying into the airport from the east over Glenmary. The planes are about 10 minutes apart and the noise is loud. I can hear the planes approaching; they are accelerating for landing and then trailing off as they approach the airport. This is a new situation. I wonder if the airport has changed its approach, or if this is a temporary weather situation?
Rodman St	40208	2015-11-13 04:50:38	2015-11-13 04:30:00	SDF	Too Much Noise	NW	Investigated	Non-Standard	Weather	I'm going on record again to complain about the ongoing noise pollution that residents of this area (Rodman / 4th Street / Churchill Downs) experience every night. It is nearly impossible to sleep as every 2-3 minutes a plane is taking off right over my head. It is absolutely awful and there is no leadership or outreach to members of this community regarding how this noise can be abated.

1. **Standard:** Indicates the "Most Preferred" runway configuration was being utilized at the time of the comment.
Non Standard: Indicates that a "Lesser Preferred" runway configuration was being utilized at the time of the comment.
QHP: QuieterHome Program

2. This column is used to indicate the conditions which most likely necessitated a deviation from the standard procedures.

Comments (SDF/LOU)

November 2015

Street	Zip Code	Time Received	Time	Airport	Disturbance Type	CNF Quad	Status	Operation or Comment Type ¹	Deviation Type ²	Comments
Forum AV	40214	2015-11-17 17:34:00	2015-11-16 22:00:00	SDF	Too Much Noise	SW	Investigated	Standard	Weather	<p>I would like to speak with someone about the noise from last night's planes. It was unbearable and I am really at wits end trying to figure out what I need to do to be able to sleep at night. Apparently, I am not getting any help from anyone out there so I need to talk to Skip Miller or someone maybe above Skip that can help me with this problem I am having. Last night was unbearable. It was very, very bad and I did not sleep a wink. You guys keep telling me there is nothing you guys can do about it because I am not in a certain zone or something. I have got questions for Skip Miller or would like to talk to someone out there about this matter. You are disturbing my peace, I can't sleep at night and it is worse than having someone next door with a stereo blasting with the volume up full against my window, it is worse than that.</p> <p>You guys are not giving me any cooperation or help or anything. You are just basically ignoring me and I really do not know what else to do here. I am going to keep calling and try to get this matter resolved. I am not going away, I am not moving, and I was here before UPS was. If you continue to bother me, I am going to continue to bother you with phone calls and do whatever I can do to get your attention that this is unacceptable. You have to do something for us out here especially after last night. Last night was unbearable. I don't know what you are thinking.</p>

1. **Standard:** Indicates the "Most Preferred" runway configuration was being utilized at the time of the comment.
Non Standard: Indicates that a "Lesser Preferred" runway configuration was being utilized at the time of the comment.
QHP: QuieterHome Program

2. This column is used to indicate the conditions which most likely necessitated a deviation from the standard procedures.

Comments (SDF/LOU)

November 2015

Street	Zip Code	Time Received	Time	Airport	Disturbance Type	CNF Quad	Status	Operation or Comment Type ¹	Deviation Type ²	Comments
Eastover Ct	40206	2015-11-17 08:12:10	2015-11-17 02:42:00	SDF	Too Much Noise	NE	Investigated	Standard	Weather	At night I can hear planes reversing their engines after landing on the runway. I can also hear them taking off starting around 3:00 or 4:00 in the morning. The noise is significantly louder than my heating and air-conditioning system. I find this pretty amazing since I live fairly far away by the water company off Frankfort Avenue. Are the engines on the newer planes louder? You will notice I'm writing this at 2:42 AM because I am awake and hearing the planes. Can you bring me up to speed on what is going on out there at night please?
Lee Dr	47119	2015-11-17 17:42:00	2015-11-17 17:42:00	SDF	Other	SI	Investigated	Standard	None	I live in line with the flight path at SDF but I am in Floyds Knobs but they come over my house when they are on approach. I was checking to see if there was any kind of assistance with the noise control that I could do to my house
Loretta St	40213	2015-11-18 14:00:00	2015-11-18 03:00:00	SDF	Too Much Noise	SE	Investigated	Standard	Weather	The planes have seemed really loud the past few days. Are they using a different runway or something at the airport?
Scott St	40213	2015-11-19 10:08:00	2015-11-19 10:08:00	SDF	Other	NE	Investigated	Standard	None	There has been a lot noise lately and people have been talking about it at the neighborhood meeting. I saw a news story on Monday or Tuesday and would like to know if we are going to get some help with the noise.
Kimberly Dr	40047	2015-11-21 19:12:00	2015-11-21 04:12:00	SDF	Aircraft Too Low	SW	Investigated	Standard	None	Airplanes arriving in Louisville around 4:00 AM are tremendously loud! I live in Mt. Washington, KY and am often awakened out of a sound sleep? It sounds as if the plane is landing on top of my house.
							Received	LRAA	13	

1. **Standard:** Indicates the "Most Preferred" runway configuration was being utilized at the time of the comment.
Non Standard: Indicates that a "Lesser Preferred" runway configuration was being utilized at the time of the comment.
QHP: QuieterHome Program

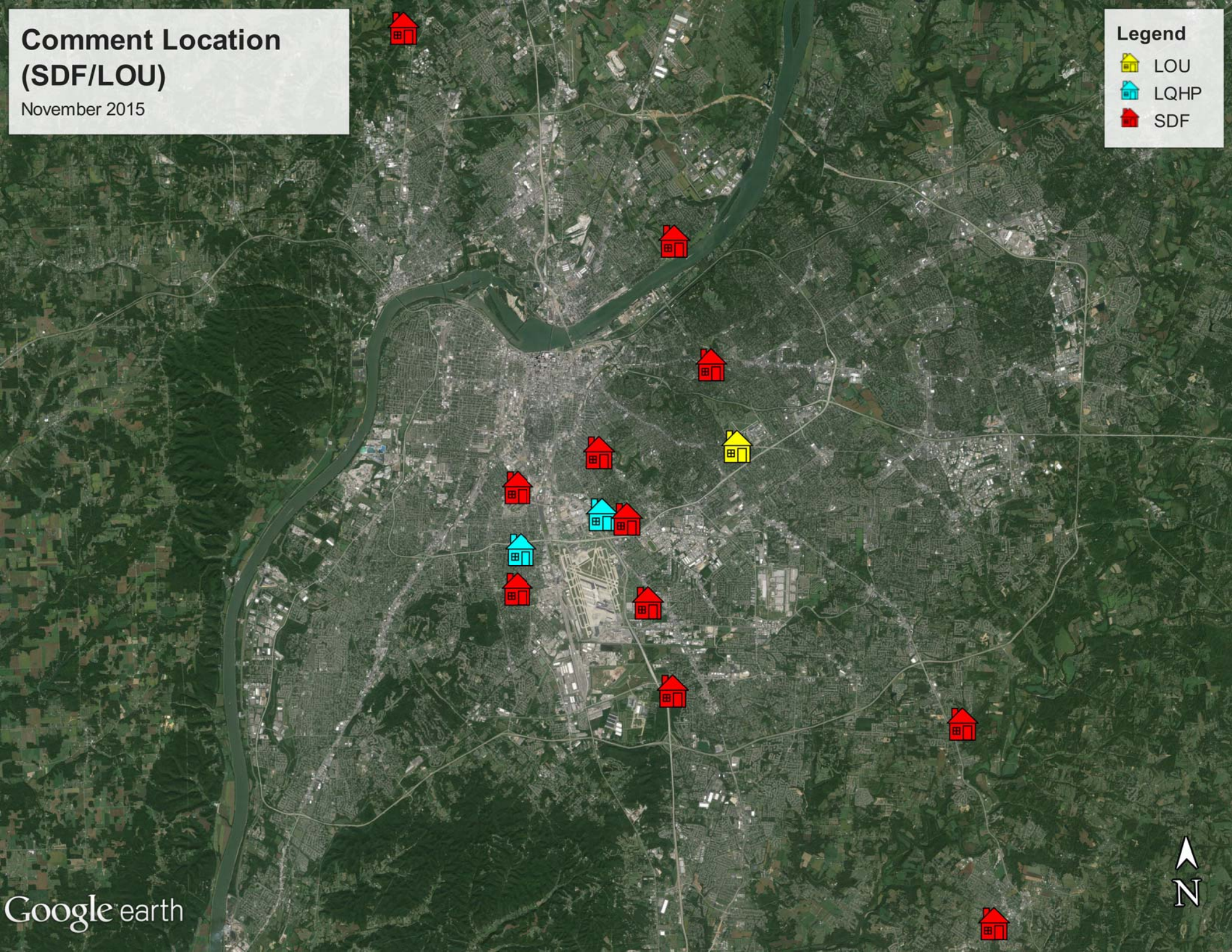
2. This column is used to indicate the conditions which most likely necessitated a deviation from the standard procedures.

Comment Location (SDF/LOU)

November 2015

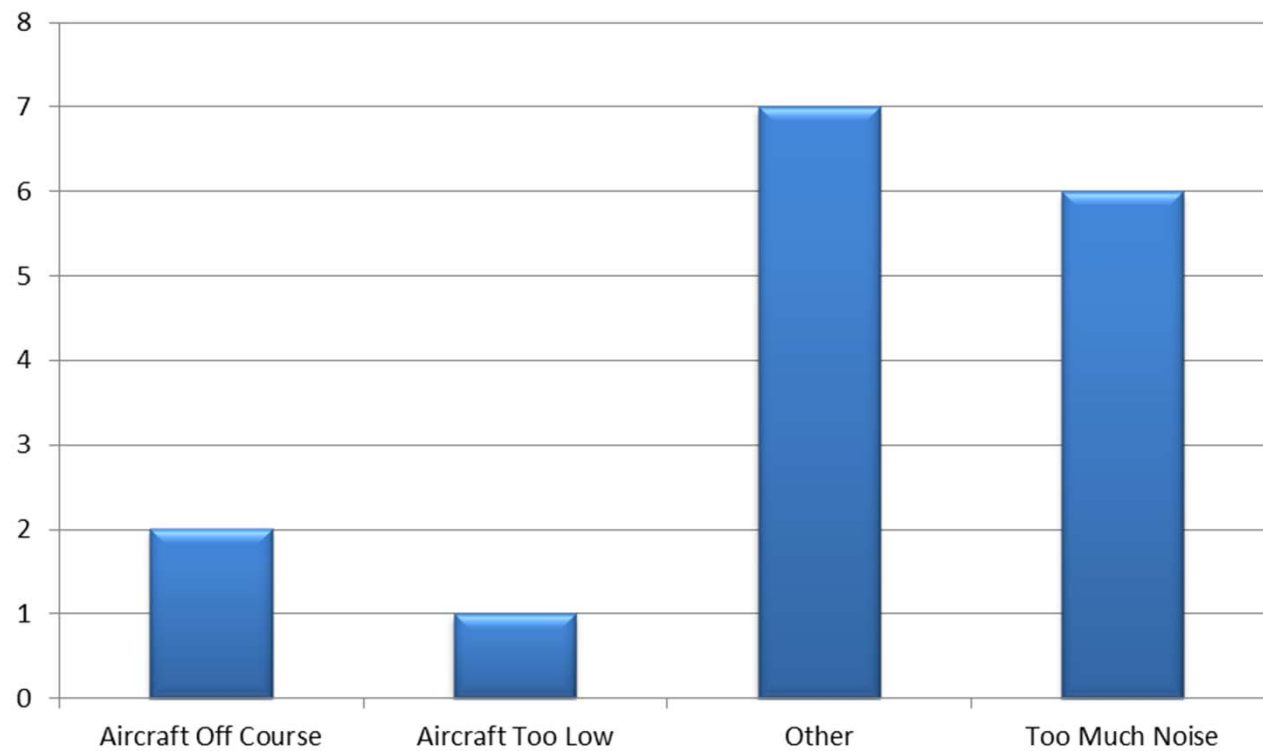
Legend

-  LOU
-  LQHP
-  SDF



Comment Type* (SDF and LOU)

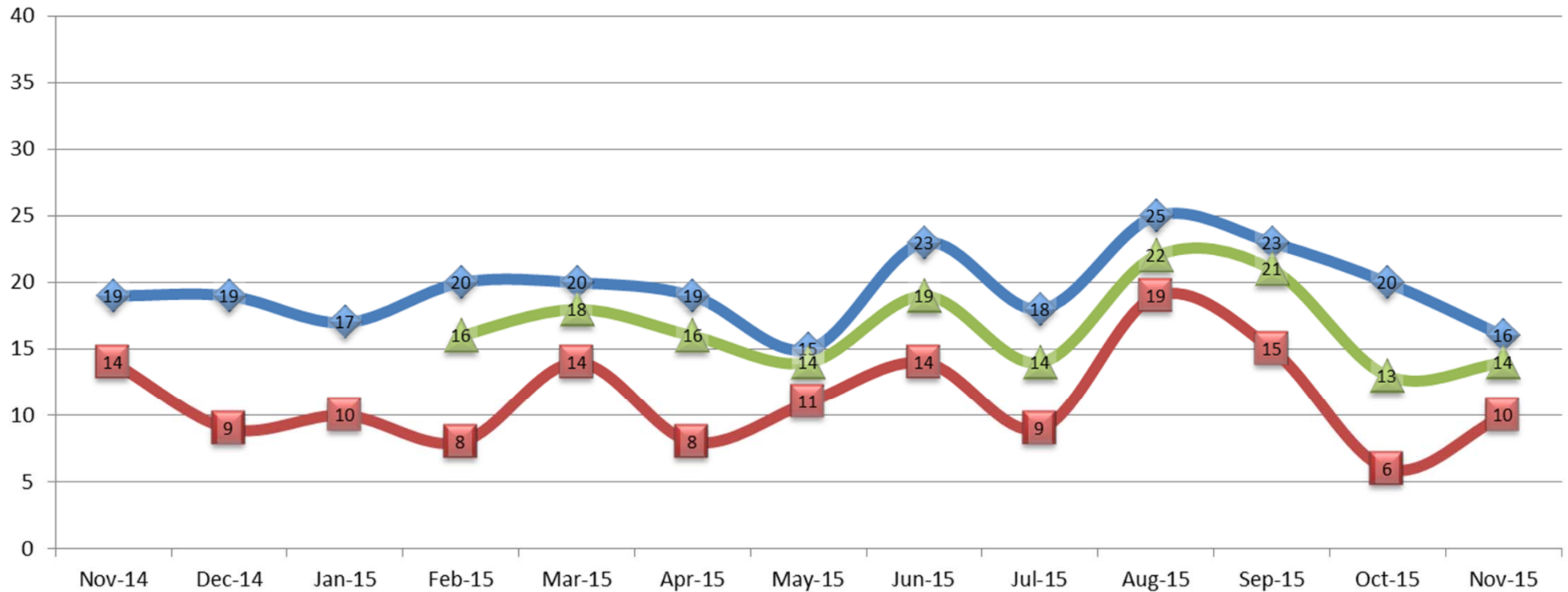
November 2015



New Address/Comments per Month (SDF and LOU)

November 2015

◆ Total Comments ■ New Callers ▲ Individual Callers





***LOUISVILLE
REGIONAL
AIRPORT
AUTHORITY®***

NOISE COMMENT REPORT
December 2015

Comments (SDF/LOU)

December 2015

Street	Zip Code	Time Received	Time	Airport	Disturbance Type	CNF Quad	Status	Operation or Comment Type ¹	Deviation Type ²	Comments
Larue Ave	40213	2015-12-02 10:43:06	2015-12-02 10:43:06	SDF	Other	NE	Investigated	LQHP	None	A realtor called to ask if this property had been included as part of the QHP.
Reading Rd	40217	2015-12-02 10:43:06	2015-12-02 10:43:06	SDF	Other	NE	Investigated	LQHP	None	New homeowner called to see if his home qualifies for program.
Bobolink Rd	40213	2015-12-15 10:43:06	2015-12-15 10:43:06	SDF	Other	NE	Investigated	LQHP	None	I just read about this program on the Internet. I live on Bobolink Road off of Audubon Parkway. The noise is better now, but at Christmas, UPS must change flight patterns. The noise has kept my family awake all night. I have had to replace windows that have cracked from the vibration. How do I find out about eligibility for the program?
Rawlings St	40217	2015-12-22 10:43:06	2015-12-22 10:43:06	SDF	Other	NE	Investigated	LQHP	None	Homeowner called to ask if her property was in the program.
Belmar Dr	40213	2015-12-29 10:43:06	2015-12-29 10:43:06	SDF	Other	NE	Investigated	LQHP	None	I own a home on Belmar Drive that I bought in 2012. Is it now or in the past eligible for the program?
							Received	LQHP	5	

1. **Standard:** Indicates the “Most Preferred” runway configuration was being utilized at the time of the comment.
Non Standard: Indicates that a “Lesser Preferred” runway configuration was being utilized at the time of the comment.
QHP: QuieterHome Program

2. This column is used to indicate the conditions which most likely necessitated a deviation from the standard procedures.

Comments (SDF/LOU)

December 2015

Street	Zip Code	Time Received	Time	Airport	Disturbance Type	CNF Quad	Status	Operation or Comment Type ¹	Deviation Type ²	Comments
Lytle ST	40203	2015-12-01 08:48:00	2015-12-01 08:48:00	SDF	Other	NW	Investigated	Standard	None	Why for two years have you let every word that came out of your mouth be a lie? I realized you was a outright liar when you said I will make it down to your area but I don't know when and have me leave you all the dates and times for flights. Expect a follow up from me. I will video and then send tapes to our legislators along with your absolute out right deceptive lies. You are a disgrace to the office you hold.
Eagle Pass	40213	2015-12-10 15:35:00	2015-12-09 22:01:00	SDF	Constant Noise	NE	Investigated	Standard	Weather	I stay at my parents' house on Eagle Pass in Audubon Park frequently and wanted to know if something has changed recently regarding the flight pattern.
Gray Fox Dr	47150	2015-12-14 12:45:00	2015-12-12 01:18:00	SDF	Noise At Wrong Time	SI	Investigated	Non-Standard	Weather	I have children that are not able to sleep because of the constant onslaught of airplanes flying low on decent to your airport! I do not live close to your airport. I don't know, nor do I care why these planes are being brought in on decent through Indiana. What I do know is there isn't a way to contact the airport directly, which is why I sent this email to you. ENOUGH IS ENOUGH! If the airport won't change flight patterns to allow the planes to descend from Kentucky then I will be forced to file a lawsuit of noise pollution and disturbing the peace against the host city of Louisville! I'm not asking for much. I moved here for a quiet neighborhood to raise my children and Louisville and its airport has messed that up. If I wanted to hear all this garbage I would have moved to Louisville and paid much less for my home! CHANGE THE FLIGHT PATTERNS!

1. **Standard:** Indicates the "Most Preferred" runway configuration was being utilized at the time of the comment.
Non Standard: Indicates that a "Lesser Preferred" runway configuration was being utilized at the time of the comment.
QHP: QuieterHome Program

2. This column is used to indicate the conditions which most likely necessitated a deviation from the standard procedures.

Comments (SDF/LOU)

December 2015

Street	Zip Code	Time Received	Time	Airport	Disturbance Type	CNF Quad	Status	Operation or Comment Type ¹	Deviation Type ²	Comments
Carlotia Dr	47130	2015-12-15 18:55:00	2015-12-15 18:38:00	SDF	Too Much Noise	SI	Investigated	Standard	None	Flight UPS2136 B752 at 18:38 rattled my windows, scared my animals, and shook the items on my fireplace mantle. The roar from the plane was so loud, that it drowned out my television (nightly news). My windows are closed, and my heater is on. It was louder than all of those! Require UPS to use appropriate sound mitigation and not overload planes that are not modernized. I am a pilot myself! I DO understand that flight patterns change with the weather. I also understand that rules are in place to mitigate noise from those large aircraft and UPS is not following them, in their greedy attempt to make profits! Get off your ass and enforce the regulations!
Vine St	40204	2015-12-17 09:59:00	2015-12-17 03:30:00	SDF	Too Much Noise	NE	Investigated	Non-Standard	Weather	What can we do to get the flight path changed for our zip code? It is so loud it wakes me and my husband up most nights at around 4:00 AM!
Mckinley AV	40217	2015-12-22 08:14:00	2015-12-22 08:14:00	SDF	Noise At Wrong Time	NE	Investigated	Non-Standard	Weather	For the past several months I have been woke up with airplanes flying low over my house. It wakes me up almost every night. This is unacceptable. I work every day and I am so tired of being tired. This needs to be addressed.
UNK	40209	2015-12-23 08:57:00	2015-12-22 22:00:00	SDF	Constant Noise	NE	Investigated	Non-Standard	None	The noise from the airport in the middle of the night rattles my house. It sounds like a turbine running. It does not sound like airplanes going over. It has been going on the last several months. It is impossible to sleep.

1. **Standard:** Indicates the “Most Preferred” runway configuration was being utilized at the time of the comment.
Non Standard: Indicates that a “Lesser Preferred” runway configuration was being utilized at the time of the comment.
QHP: QuieterHome Program

2. This column is used to indicate the conditions which most likely necessitated a deviation from the standard procedures.

Comments (SDF/LOU)

December 2015

Street	Zip Code	Time Received	Time	Airport	Disturbance Type	CNF Quad	Status	Operation or Comment Type ¹	Deviation Type ²	Comments
County Rd 225 N	47167	2015-12-23 09:58:00	2015-12-23 00:30:00	SDF	Aircraft Too Low	SI	Investigated	Non-Standard	Ops	Tizz the day before Christmas eve and what do I hear, but very low flying jetliners ever four minutes over and over again...here I am in Salem Indiana and somehow my home is under the flight path of Louisville airports holding pattern. I understand they get busy and have to do this, BUT FOR THE LOVE OF ALL THAT'S HOLY!!! PUT SOME FREAKING ALTITUDE ON THOSE THINGS!!
Belmar Dr	40213	2015-12-29 07:58:00	2015-12-29 07:58:00	SDF	Other	NE	Investigated	Standard	None	I own a house on Belmar Drive that I bought in 2012. Is it eligible now or in the past for the program?
Fetter AV	40217	2015-12-29 15:18:00	2015-12-29 15:18:00	SDF	Other	NE	Investigated	Standard	None	Why was the proposed alternate noise exposure map not utilized during eligibility determination for the Quieter Home program? Why was "block rounding" approach not used in the eligibility determination for Fetter Ave.? When is a revised Noise exposure map being developed?
							Received	LRAA	10	

1. **Standard:** Indicates the "Most Preferred" runway configuration was being utilized at the time of the comment.
Non Standard: Indicates that a "Lesser Preferred" runway configuration was being utilized at the time of the comment.
QHP: QuieterHome Program

2. This column is used to indicate the conditions which most likely necessitated a deviation from the standard procedures.

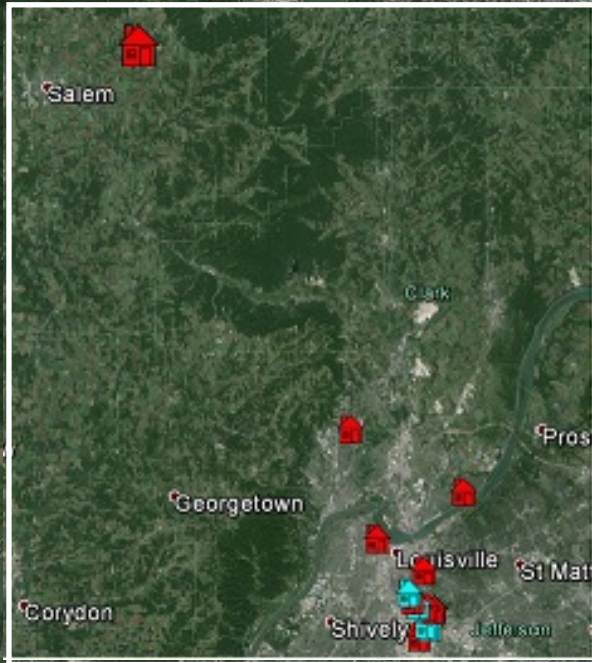
Comment Location (SDF/LOU)

December 2015

Legend

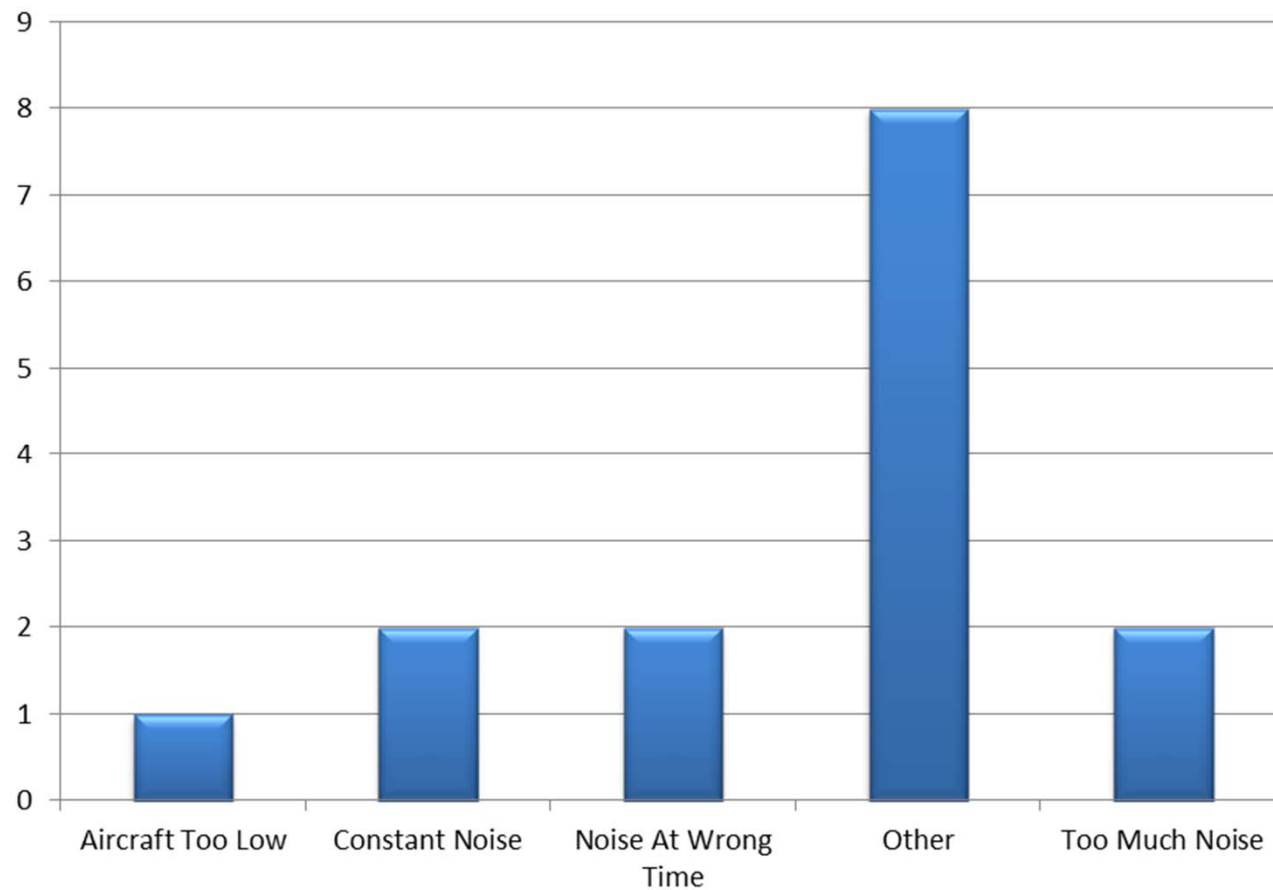
 LQHP

 SDF



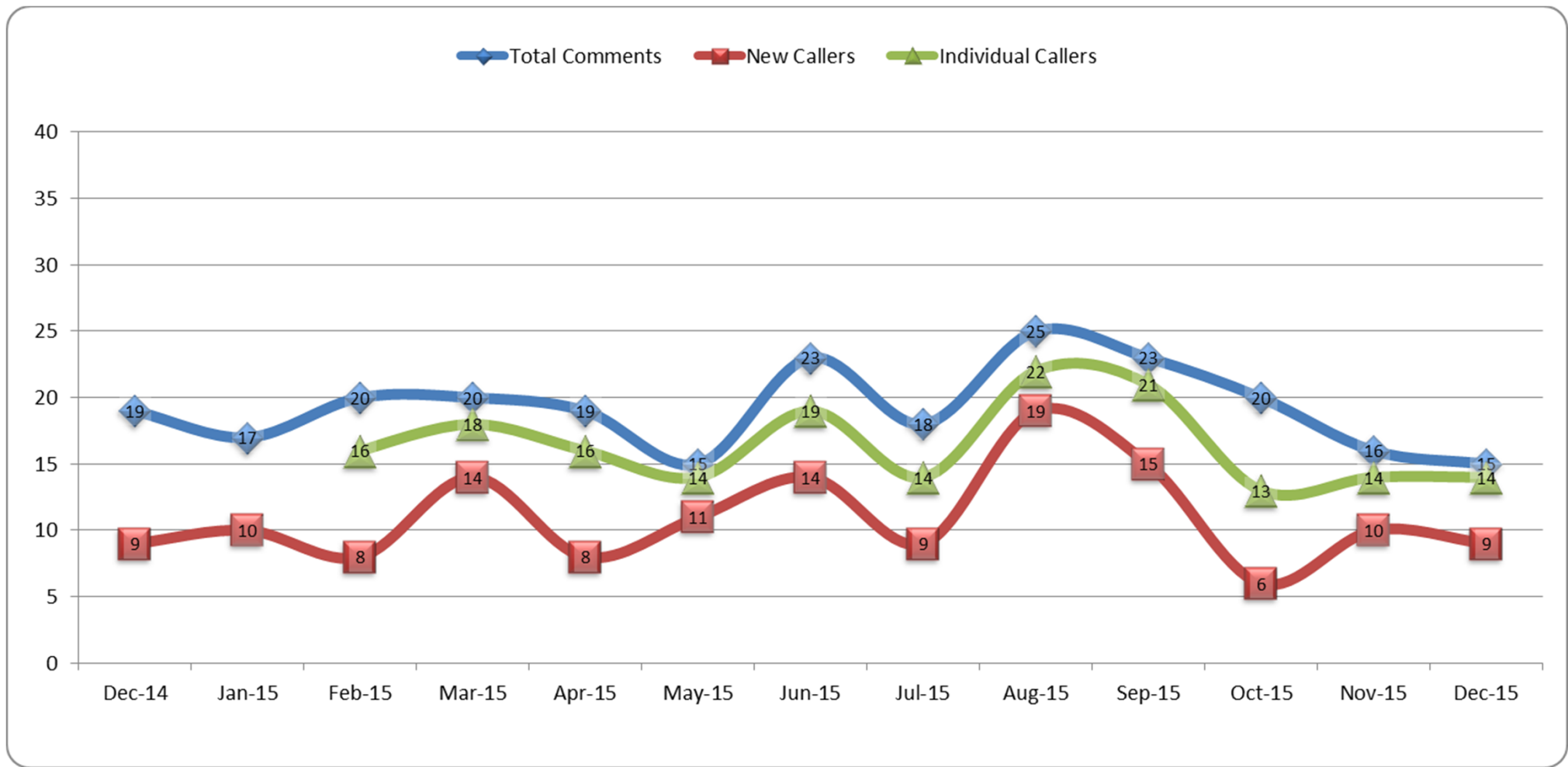
Comment Type* (SDF and LOU)

December 2015



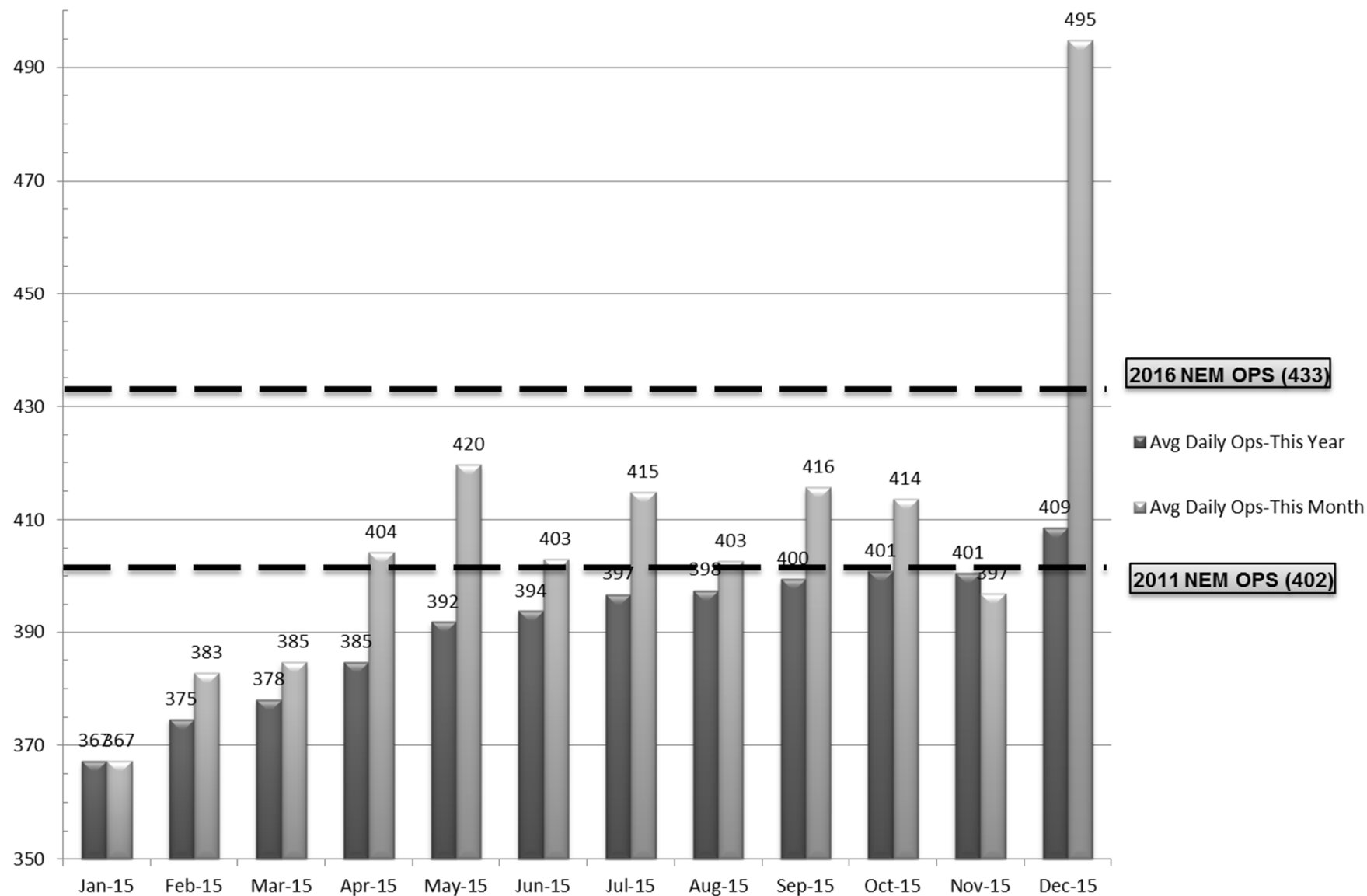
New Address/Comments per Month (SDF and LOU)

December 2015



Operations (SDF)

As of December 31, 2015



Source: Louisville <http://www.flylouisville.com/regional-airport-authority/reports-and-statistics/>

Daily Runway Use Uncorrected (SDF) November 2015

Flow	Time	Sun 11/1	Mon 11/2	Tue 11/3	Wed 11/4	Thu 11/5	Fri 11/6	Sat 11/7	Sun 11/8	Mon 11/9	Tue 11/10	Wed 11/11	Thu 11/12	Fri 11/13	Sat 11/14	Sun 11/15	Mon 11/16	Tue 11/17	Wed 11/18	Thu 11/19	Fri 11/20	Sat 11/21	Sun 11/22	Mon 11/23	Tue 11/24	Wed 11/25	Thu 11/26	Fri 11/27	Sat 11/28	Sun 11/29	Mon 11/30	Time
North Flow	0:00																															0:00
	0:30																															0:30
	1:00																															1:00
	1:30																															1:30
	2:00																															2:00
	2:30																	XXX														2:30
South Flow	3:00																															3:00
	3:30																															3:30
	4:00																															4:00
	4:30												XXX									XXX										4:30
	5:00						XXX						XXX					XXX														5:00
	5:30																															5:30
	6:00																															6:00
	6:30																															6:30
	7:00																															7:00
	7:30																															7:30
	8:00																															8:00
	8:30																															8:30
	9:00					XXX																										9:00
North Flow	9:30																															9:30
	10:00																	XXX														10:00
	10:30																															10:30
	11:00												XXX																			11:00
	11:30																															11:30
	12:00																															12:00
South Flow	12:30																															12:30
	13:00																															13:00
	13:30																															13:30
	14:00																															14:00
	14:30																															14:30
	15:00																															15:00
	15:30																															15:30
	16:00																															16:00
	16:30																															16:30
	17:00																															17:00
	17:30																															17:30
	18:00																															18:00
	18:30																															18:30
	19:00																															19:00
North Flow	19:30																	XXX														19:30
	20:00																															20:00
	20:30																															20:30
	21:00																															21:00
	21:30																															21:30
	22:00																															22:00
North Flow	22:30																															22:30
	23:00																															23:00
	23:30																															23:30
	0:00																															0:00

Preferred Flow

DATIS Reported Conditions Indicate Support for Non-Preferred Flow

DATIS Reported Conditions Do Not Indicate Support for Non-Preferred Flow

South Flow is Preferred Flow from 09:30 Saturday - 09:30 Monday

XXX Complaint

Source: Louisville International Airport Aircraft Flight Tracking and Noise Management System (AFTNMS)

Daily Runway Use (SDF)

Tower Comments November 2015

Day	Date	Time	Comment
Sun	1-Nov-15		
Mon	2-Nov-15	1600-1730	B747-800 arrival
Tue	3-Nov-15	1300-1330	Delay in rwy change due to traffic.
Wed	4-Nov-15		
Thu	5-Nov-15		
Fri	6-Nov-15	0300-0700	Log shows south, went north @0350 wind 3221G31
Fri	6-Nov-15	0930-1230	Wind 2109G14, wet runways
Sat	7-Nov-15	0730-0900	Log shows south operation.
Sat	7-Nov-15	1100-1430	Log shows south operation.
Sun	8-Nov-15		
Mon	9-Nov-15		
Tue	10-Nov-15	0930-1230	Closure of TWY G and 17L/35R.
Wed	11-Nov-15	1200-1230	Wind 1508, multiple operational requests for south
Thu	12-Nov-15		
Fri	13-Nov-15	0300-0700	Correction: Log shows south operation.
Fri	13-Nov-15	2000-2130	Wind 3111G15
Sat	14-Nov-15		
Sun	15-Nov-15		
Mon	16-Nov-15		
Tue	17-Nov-15	2200-0000	Wind 1311
Wed	18-Nov-15	0000-0230	Wind 1312
Thu	19-Nov-15		
Fri	20-Nov-15	2200-0000	Wind 1509, 1330 on final
Sat	21-Nov-15	0000-0230	Wind 1428 on final.
Sun	22-Nov-15	1030-1230	Valid reason not documented.
Mon	23-Nov-15		
Tue	24-Nov-15		
Wed	25-Nov-15	2200-0000	Wind 1510
Thu	26-Nov-15	0000-0230	Wind 1508, unable to change during inbound
Thu	26-Nov-15	2200-0000	Wind 1509.
Fri	27-Nov-15		
Sat	28-Nov-15		
Sun	29-Nov-15	1100-1500	Wind 0206 wet runways
Mon	30-Nov-15	0000-0230	North operation, wind 0710 wet runways

Daily Runway Use Uncorrected (SDF) December 2015

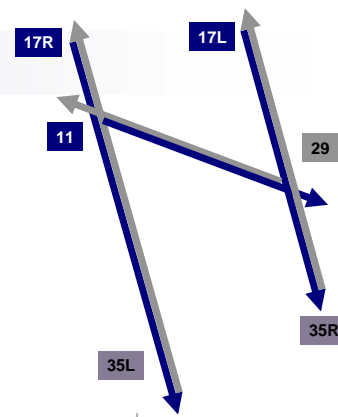
[illegible]

Daily Runway Use (SDF)

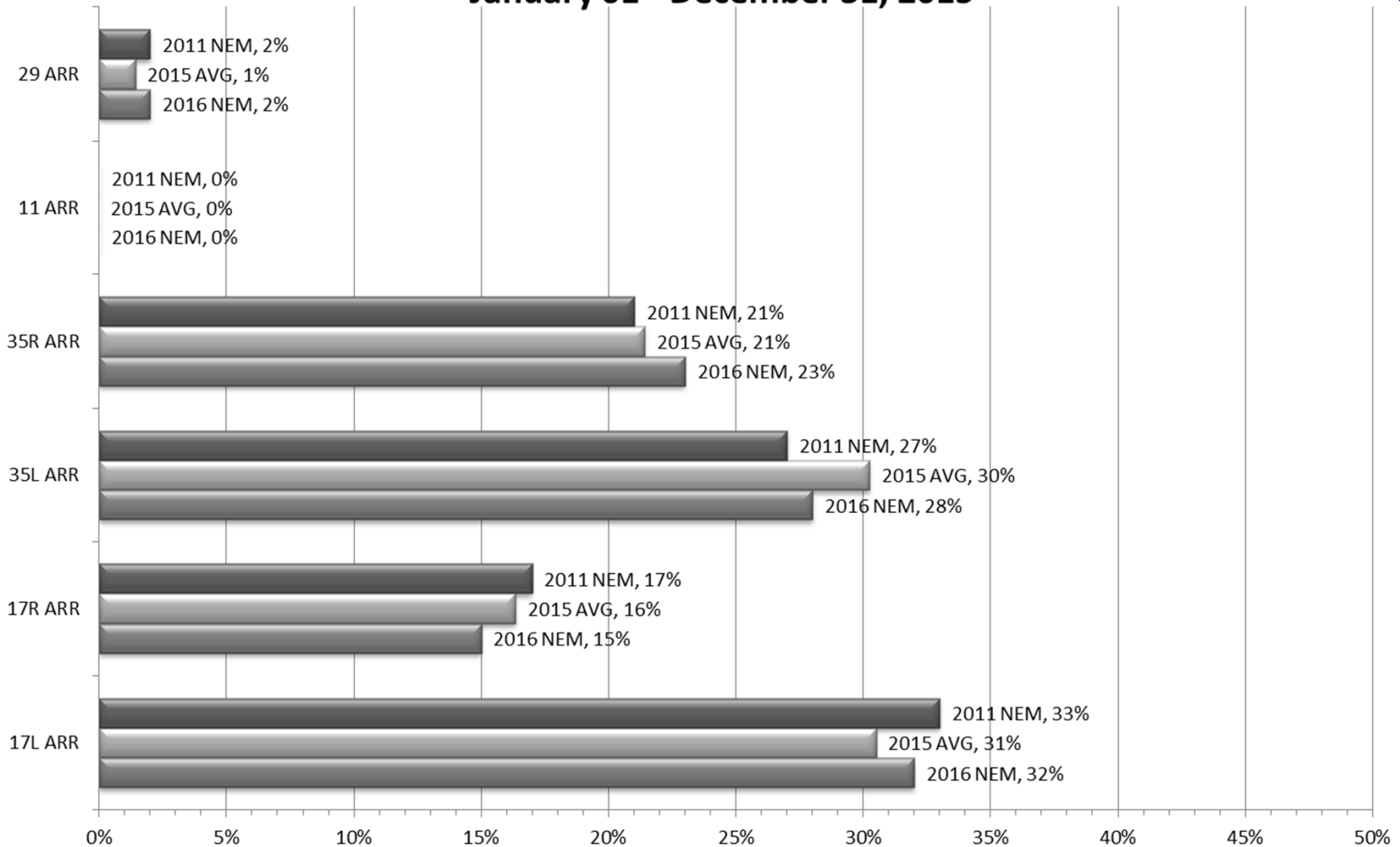
Tower Comments December 2015

Day	Date	Time	Comment
Tue	1-Dec-15	1300-1500	Wind 3009, then 2810G15
Wed	2-Dec-15	0930-1200	Wind 2416G24, forecast 2512G20
Thu	3-Dec-15		
Fri	4-Dec-15	1830-2130	Wind 0111
Sat	5-Dec-15	0300-1000	Vsby 1/4, north required for Cat II/III ops
Sun	6-Dec-15		
Mon	7-Dec-15		
Tue	8-Dec-15	2200-0000	Wind 1510
Wed	9-Dec-15	0000-0230	Wind 1509
Thu	10-Dec-15		
Fri	11-Dec-15		
Sat	12-Dec-15		
Sun	13-Dec-15		
Mon	14-Dec-15	2030-2130	Log shows south operation, wind 2323G29
Tue	15-Dec-15		
Wed	16-Dec-15	0930-1030	Wind 1309, forecast 2010G18
Thu	17-Dec-15	0800-0930	Wind 3110
Fri	18-Dec-15	0300-0900	Wind 3210
Fri	18-Dec-15	1700-1830	Wind 2922G30, also using RWY 29
Fri	18-Dec-15	2200-0000	Wind 2310G14
Sat	19-Dec-15	0000-0230	Wind 2311G18
Sat	19-Dec-15	1130-1330	Wind 3110G17
Sun	20-Dec-15		
Mon	21-Dec-15		
Tue	22-Dec-15	2200-0000	Wind 1510, forecast wet runways
Wed	23-Dec-15	0000-0230	Wind 1510
Thu	24-Dec-15	0300-0900	South until 0441, then north - wind 3017G24
Thu	24-Dec-15	2200-0000	Wind 1509
Fri	25-Dec-15	0000-0230	Wind 1409
Fri	25-Dec-15	1700-2130	Wind 3509 wet runways
Sat	26-Dec-15		
Sun	27-Dec-15		
Mon	28-Dec-15		
Tue	29-Dec-15	0930-1130	Wind 2410G17, forecast strong from south
Wed	30-Dec-15	1300-2130	Wind 3207, wet runways
Thu	31-Dec-15	1300-2130	Wind 3110

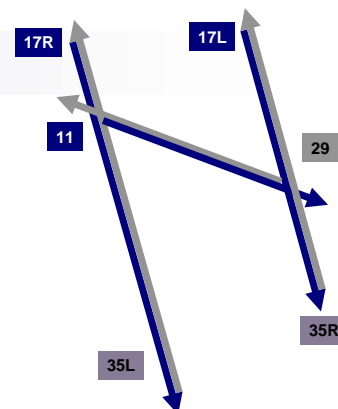
Runway Use (SDF Arrivals)



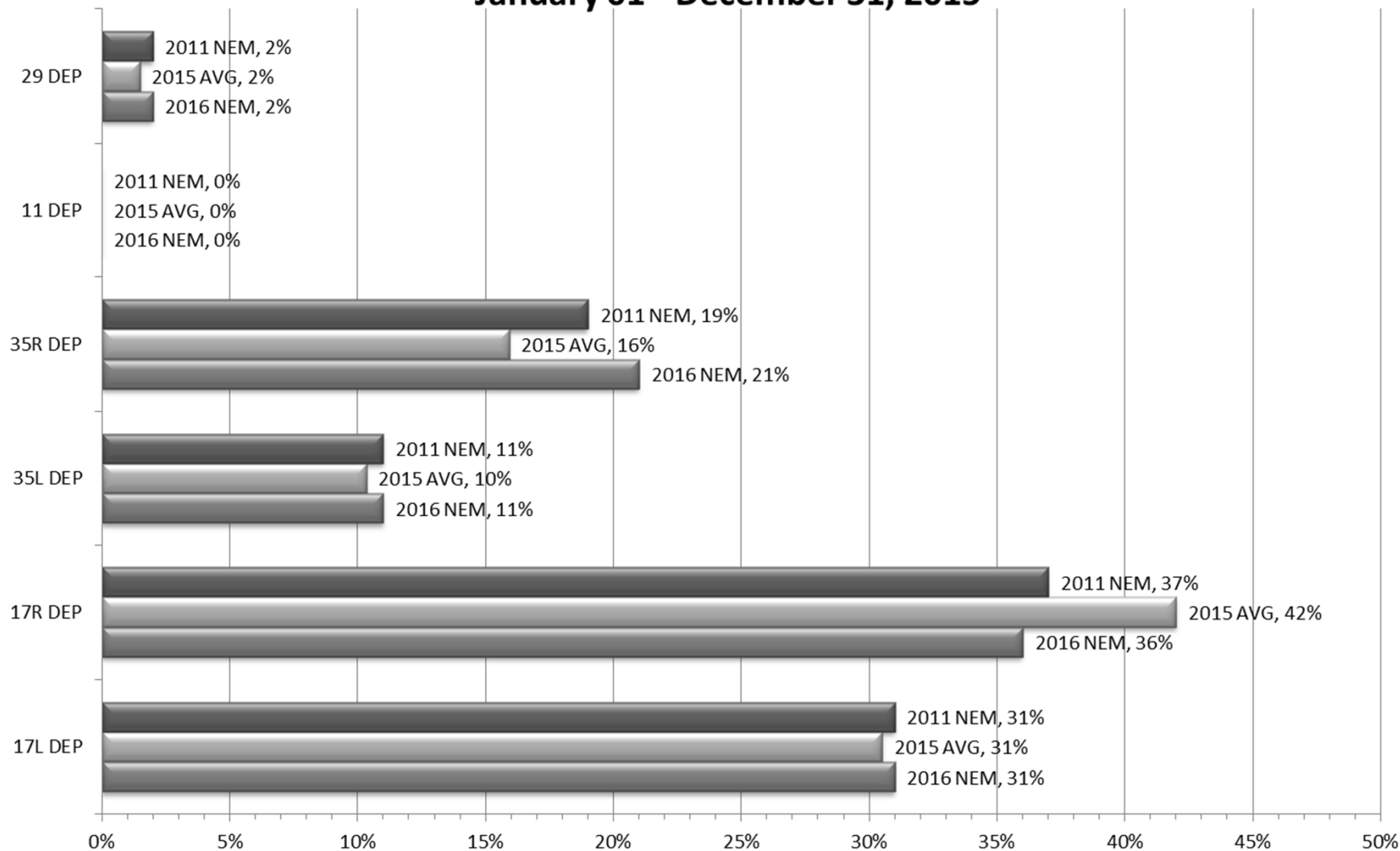
NEM vs. Actual
January 01 - December 31, 2015

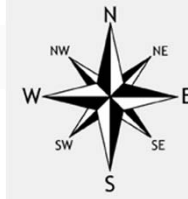


Runway Use (SDF Departures)



NEM vs. Actual
January 01 - December 31, 2015



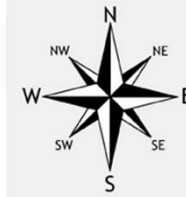


Runway Use 0930L-1230L_(SDF)

As of December 31, 2015

	Arrival Percentage by Runway								Departure Percentage by Runway							
	11	17L	17R	29	35L	35R	% From South	Arrival Count	11	17L	17R	29	35L	35R	% To North	Departure Count
Jan-14	0	27	21	2	29	21	50	682	0	28	21	4	19	37	56	401
Feb-14	0	13	11	7	37	32	69	669	0	19	11	7	15	48	63	359
Mar-14	0	25	21	7	29	18	47	675	0	30	18	4	7	41	48	408
Apr-14	0	33	19	5	23	20	43	700	0	39	19	6	9	27	36	416
May-14	0	32	25	0	24	19	43	706	0	36	22	1	5	36	41	387
Jun-14	0	27	22	0	36	15	51	643	0	36	20	2	10	32	42	389
Jul-14	0	12	12	0	44	32	76	733	0	12	10	0	20	58	78	410
Aug-14	0	13	2	0	54	31	85	673	0	11	6	0	27	56	83	407
Sep-14	0	14	8	0	38	40	78	668	0	11	11	0	20	58	78	388
Oct-14	0	30	20	0	25	25	50	767	0	35	16	0	5	44	49	414
Nov-14	0	11	15	8	44	22	66	610	0	16	14	11	10	49	59	335
Dec-14	0	22	13	0	38	27	65	959	0	24	16	1	8	51	59	373
Jan-15	0	17	6	0	45	32	77	619	0	15	8	3	22	52	74	313
Feb-15	0	14	18	0	37	31	68	619	0	12	15	2	10	61	71	317
Mar-15	0	9	17	0	47	27	74	662	0	10	15	0	28	47	75	396
Apr-15	0	20	15	14	37	14	51	667	0	24	21	16	23	16	39	371
May-15	0	28	23	0	38	11	49	656	0	33	27	0	19	21	40	358
Jun-15	0	21	22	0	42	15	57	683	0	30	22	0	17	31	48	349
Jul-15	0	12	25	0	42	21	63	827	0	17	21	0	15	47	62	403
Aug-15	0	15	25	0	38	22	60	712	0	20	19	0	15	46	61	365
Sep-15	0	7	24	0	36	33	69	796	0	11	20	0	13	56	69	407
Oct-15	0	19	31	0	26	24	50	784	0	20	25	0	2	53	55	411
Nov-15	0	20	25	11	22	22	44	676	0	15	26	12	5	42	47	380
Dec-15	0	26	19	0	37	18	55	1082	0	24	25	0	5	46	51	449
Monthly Avg.	0	19	18	2	36	24	60		0	22	18	3	14	44	58	

Source: Louisville International Airport
Aircraft Flight Tracking and Noise Management System (AFTNMS)



Gate Compliance by Runway

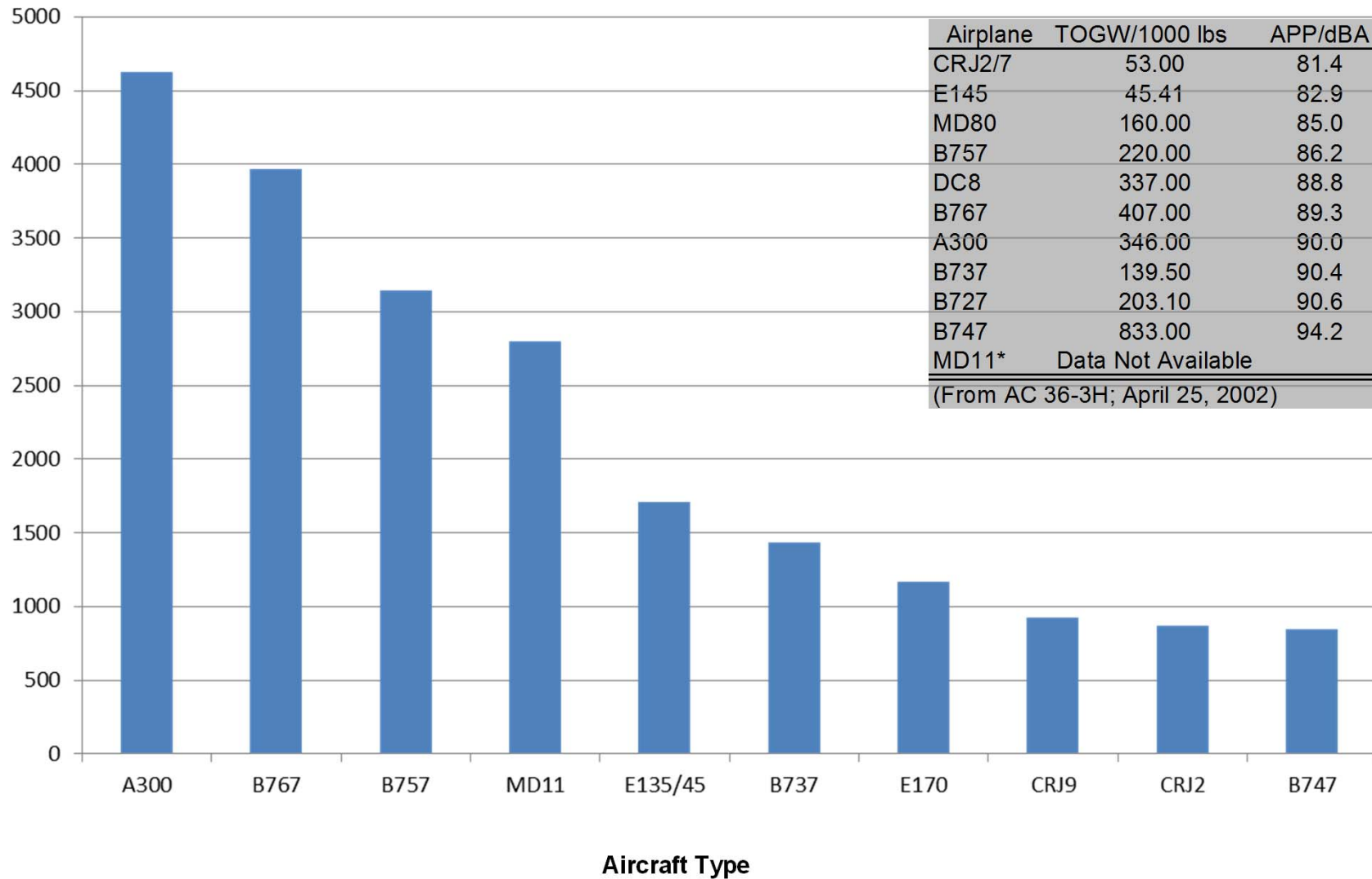
As of December 31, 2015

	ARRIVALS Percent Compliant					Departure Percent Compliant				
Month	17L	17R	35L	35R	ARR AVG	17L	17R	35L	35R	DEP AVG
Jan-14	78%	88%	86%	84%	84%	67%	91%	75%	89%	81%
Feb-14	80%	89%	86%	85%	85%	60%	90%	76%	89%	79%
Mar-14	74%	90%	79%	81%	81%	71%	86%	78%	87%	81%
Apr-14	79%	91%	82%	81%	83%	68%	81%	76%	86%	78%
May-14	75%	88%	78%	81%	81%	68%	85%	59%	82%	74%
Jun-14	82%	92%	86%	82%	86%	71%	89%	81%	94%	84%
Jul-14	79%	88%	78%	76%	80%	88%	89%	79%	92%	87%
Aug-14	84%	91%	82%	80%	84%	89%	85%	76%	90%	85%
Sep-14	81%	81%	81%	79%	81%	91%	88%	79%	92%	88%
Oct-14	82%	94%	88%	87%	88%	85%	88%	79%	92%	86%
Nov-14	80%	91%	91%	91%	88%	79%	92%	83%	87%	85%
Dec-14	91%	96%	93%	95%	94%	85%	89%	81%	88%	86%
Jan-15	80%	93%	90%	87%	88%	83%	93%	78%	88%	86%
Feb-15	80%	91%	87%	87%	86%	84%	93%	81%	92%	88%
Mar-15	78%	90%	88%	84%	85%	83%	88%	65%	86%	81%
Apr-15	83%	93%	80%	77%	83%	79%	86%	63%	82%	78%
May-15	79%	86%	84%	82%	83%	82%	87%	71%	90%	83%
Jun-15	80%	91%	87%	85%	86%	84%	89%	78%	91%	86%
Jul-15	86%	96%	88%	85%	89%	73%	86%	71%	87%	79%
Aug-15	81%	90%	82%	82%	84%	77%	88%	78%	88%	83%
Sep-15	79%	86%	84%	83%	83%	78%	88%	77%	91%	84%
Oct-15	82%	90%	88%	85%	86%	71%	88%	66%	86%	78%
Nov-16	82%	93%	87%	86%	87%	80%	88%	75%	87%	83%
Dec-16	89%	97%	93%	94%	93%	75%	90%	83%	90%	85%
24 Month Avg.					85%					83%

Source: Louisville International Airport
Aircraft Flight Tracking and Noise Management System (AFTNMS)

Operations by Aircraft Type (SDF) Only Top 10 Aircraft Types Shown

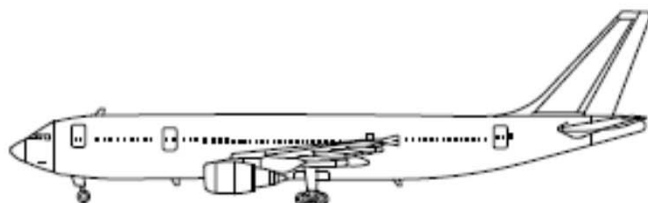
November / December 2015



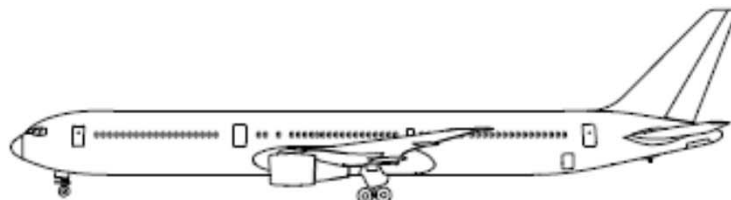
Source: Louisville International Airport

Aircraft Flight Tracking and Noise Management System (AFTNMS)

Sample Aircraft Types (SDF)



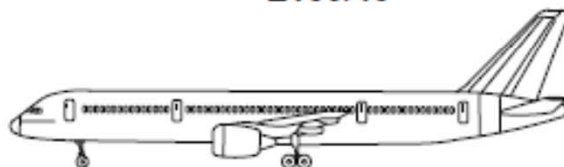
A300



B767



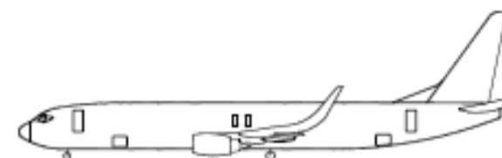
E135/45



B757



MD11



B737



CRJ2



E170



MD80



CRJ9