

Community Noise Forum
Monday July 22, 2013
Agenda

- I. Call to order: 6:00PM
- II. Minutes of May 20, 2013.
- III. Part 150 NCP
 - A. Update: Noise Insulation Program
 - B. Contraflow Exceptions
- IV. Current Noise Concerns
 - A. Noise Concerns/Complaints
 - B. Runway Utilization
 - C. Construction and Maintenance Activity
- V. Announcements
- VI. Guest Comments
- VII.. Next Meeting: Monday, September 23, 2013
- VIII. Adjournment:

COMMUNITY NOISE FORUM (CNF)
Monday, May 20, 2013

Members

John Sistarenik, ANA
Dwight Clayton, LRAA
Maj. Jason Schmidt, KyANG
Bob Slattery, LRAA
Mary Rose Evans, LRAA Board
Pete Levermore, Airline Affairs

Mike Zanone, Northwest
Denny Thompson, Southeast
Verna Goatley, Metro
Pat Gould, Northeast
John Greathouse, Southwest
Larry Owsley, UofL

Guests

Dorn Crawford, Audubon Pkwy.
Nydia Regnier
Shane Smith

The meeting was called to order at 6:00 p.m. by John Sistarenik. John introduced Maj. Jason Schmidt who be representing the Kentucky Air National Guard. Meeting notes for the March meeting were approved as written.

Part 150 NCP:

A. Updates:

Noise Insulation Program – Is an approved measure in the Part 150 Noise compatibility Program. The LRAA moved forward with its QuieterHome® sound-insulation program in 2008. This voluntary program provides (at no cost to the eligible homeowner) customized, sound-insulation treatments designed to reduce aircraft noise within the home.

Phase 3A (North Audubon), 46 of the 53 eligible families have applied for the program. The LRAA Board approved the construction contract for 32 of these families at its January 2013 Board meeting. Final measurement walkthroughs were completed in April with construction anticipated to begin in June. Designs are completed for 14 additional families in this phase with possible advertising in June.

In Phase 3B (Audubon Park), 59 of the 68 eligible families have applied for the program and, as Audubon Park is a historic district and, a Section 106 review is being conducted. Currently, the final 106 consultation meeting was held on April 11. The Avigation easement is not a Federal undertaking and therefore not applicable to Section 106. We are awaiting concurrence from SHPO on proposed treatment options and final clearance from the FAA to proceed.

In June 2012, the LRAA Board and the FAA approved the boundaries for **Phases 4** (144 families), **5** (94 families), **6** (77 families), **and 7** (94 families), which are now undergoing a Cultural Review as part of the Section 106 process. The FAA has determined the Cultural Resources Evaluation for Phases 6-7 to be complete. Phases 4-5 have been segregated out to facilitate additional historical discussion. A site visit was held on May 17 with the FAA and SHPO. We may be getting clearance to begin design work on Phases 4 & 5 later this week.

To date, 135 families have received sound insulation.

Updated Program Guidance – Last month the Louisville Regional Airport Authority received updated program guidance from the Federal Aviation Administration Southern Region. The updated program guidance limits the number of homes receiving the full acoustical treatment package to only homes which have an interior noise level of 45dB or greater. Homes that currently have an interior noise level of less than 45dB will be eligible to receive a partial treatment package. The Partial Treatment Package for homes with an existing interior noise level of less than 45dB will be limited to new windows, prime doors, and in certain cases where it does not currently exist, installation of a new heating ventilation and air conditioning system (HVAC). Acoustical Noise measurements will be conducted on all (100%) of the homes eligible for the program in order to determine if the home qualifies for “Full” or “Partial” treatment package.

Residential Relocation Program – Information on the current status of the Residential Relocation Program is contained in the handout.

- B. Contraflow Exceptions:** Contraflow for March was 87% for arrivals from the south and 77% for departures to the south. In April, arrivals from the south were 60% and departures to the south were 89%. For CY-2013 the arrivals are averaging 74% and departures are at 78%. A daily summary for March and April 2013 is contained in the handout. A monthly summary going back 8 years is also included in the handout.

Current Noise Concerns:

- A. Report on Noise Concerns/Complaints:** We received a total of 21 comments in March. 7 comments were comments received at the QHP project office and 14 were received by the LRAA. In April we received a total of 22 comments. 9 were received at the QHP project office and 13 were received by the LRAA. All but one of the comments received in April were from the NE quadrant.

Bob Slattery delivered a written response provided by Greg Petto from SDF Air Traffic Control regarding a noise complaint dated March 30, 2013. A copy of the response is contained in the handout.

B. Runway Utilization: Runway utilization percentages for March and April are contained in the handout. Daily runway utilization and comments from the Air Traffic Control Tower for March and April are also included in the handout.

C. Construction and Maintenance Activity: Dwight Clayton reported on the Crittenden Drive Phase 2 North Connector. This project is scheduled for completion by November 1, 2013. On the airfield, we are currently in the regular maintenance mode for closures. Typically, the west runway is closed on Monday and the east runway is closed on Tuesdays. Construction of Taxiway Echo is ongoing, but will not affect the typical traffic patterns. Twelve panels on 35R (East Runway) need to be replaced. Six will be replaced over Memorial Day weekend and the other 6 will be done 2 weeks later.

Announcements: Bob Slattery provided the group a copy of a recent article from the *Airport Noise Report, Volume 25, Number 16, dated May 10, 2013* regarding UPS Adding Winglets to 767 Fleet to Save Fuel, Cut Noise.

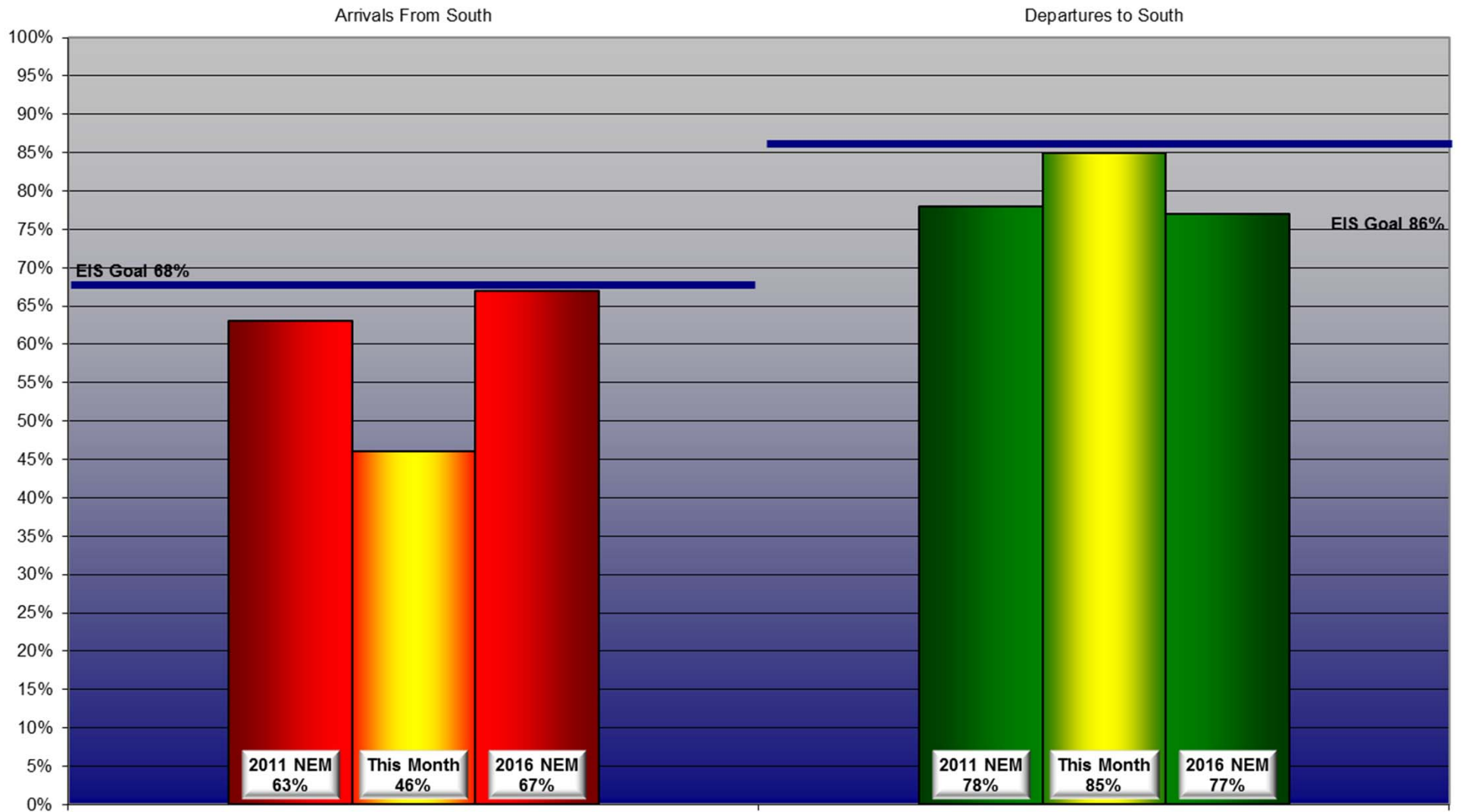
Greg Petto, the FAA representative, is resigning from the committee. He will be at the next meeting to introduce his replacement, Chris Younkin.

Guest Comments: Dorn Crawford asked if the timeline identified in the PGL for on-going sound insulation programs applies to the updated guidance discussed earlier. Bob replied that the September 2015 date is still applicable. Mr. Crawford also asked that since the easements were determined not to be part of the Federal undertaking are they going to be removed from the program. Bob Slattery responded that the easements were determined to be not part of a Federal undertaking and therefore not applicable to Section 106. The easements have always been and will remain part of the QuieterHome Program.

Next Meeting: Monday, July 22, 2013 at 6 p.m.

Adjournment: 6:53 p.m.

Monthly Contraflow May 1-31, 2013



Daily Runway Use Summary- May 2013

(from 10:00 PM date list in first column to 7:00 AM the following morning)

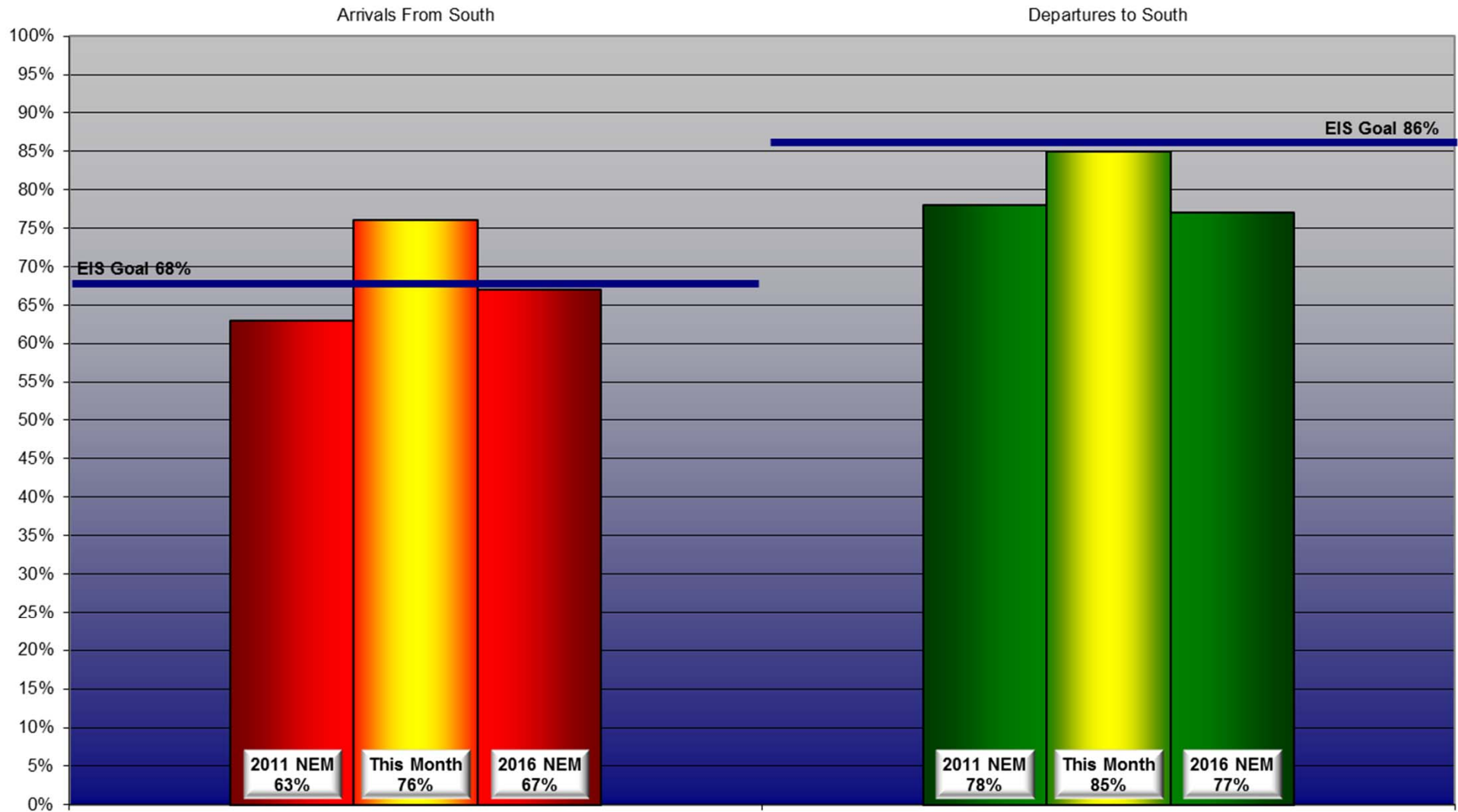
		% of all arrivals from the south										% of all departures to the south									
Date	Day	* in compliance	Runway #						Unknown Runway	Use	Notes / Comments	** in compliance	Runway #						Unknown Runway	Use	Notes / Comments
			11	17L	17R	29	35L	35R					11	17L	17R	29	35L	35R			
05/01/13	Wed	77%			6	17			40	37	0				40	59			1	0	
05/02/13	Thu	92%			6	2			54	38	0				35	62		1	2	0	
05/03/13	Fri	19%			30	51			10	9	0	110-120@3-5knts			41	54			5	0	
05/04/13	Sat																				
05/05/13	Sun																				
05/06/13	Mon	97%			1	2			59	38	0		1%		1			56	43	0	360-010@4-8knts,RA
05/07/13	Tue	97%			3				58	39	0		96%		40	56		2	2	0	
05/08/13	Wed	97%			1	2			54	43	0		91%		41	50		5	4	0	
05/09/13	Thu	0%			45	55					0	160-190@6-8knts	100%		42	58				0	
05/10/13	Fri	76%			14	10			43	33	0		3%		2	1		51	46	0	290-350@5-10knts,RA
05/11/13	Sat																				
05/12/13	Sun																				
05/13/13	Mon	96%			3	1			57	39	0		95%		38	57		3	2	0	
05/14/13	Tue	0%			51	49					0	170-220@6-7knts	100%		43	57				0	
05/15/13	Wed	0%			43	57					0	230-240@7-10knts	100%		41	59				0	
05/16/13	Thu	93%			5	2			57	36	0		94%		43	51		5	1	0	
05/17/13	Fri	10%			37	53			5	5	0	090-170@3-5knts	98%		41	57			2	0	
05/18/13	Sat																				
05/19/13	Sun																				
05/20/13	Mon	0%			45	55					0	170-200@7-9knts	100%		41	59				0	
05/21/13	Tue	0%			45	55					0	160-190@9-11knts	100%		41	59				0	
05/22/13	Wed	96%			3	1			57	39	0		95%		43	52		2	3	0	
05/23/13	Thu	100%							55	45	0		0%					55	45	0	330-360@7-15knts,G20
05/24/13	Fri	96%			1	3			54	42	0		95%		41	54		1	4	0	
05/25/13	Sat																				
05/26/13	Sun																				
05/27/13	Mon	0%			54	46					0	170-220@5-10knts	100%		43	57				0	
05/28/13	Tue	0%			46	54					0	170-180@6-9knts	100%		39	61				0	
05/29/13	Wed	0%			44	56					0	140-150@5-8knts	100%		42	58				0	
05/30/13	Thu	0%			44	56					0	160-180@7-9knts	100%		41	59				0	
05/31/13	Fri	1%			44	55			1		0	140-170@5-10knts	85%		40	45		8	7	0	

Preferred Flow

DATIS Reported Conditions Indicate
Support for Non-Preferred Flow

DATIS Reported Conditions Do Not Indicate
Support for Non-Preferred Flow

Monthly Contraflow June 01-28, 2013



Daily Runway Use Summary- June 2013

(from 10:00 PM date list in first column to 7:00 AM the following morning)

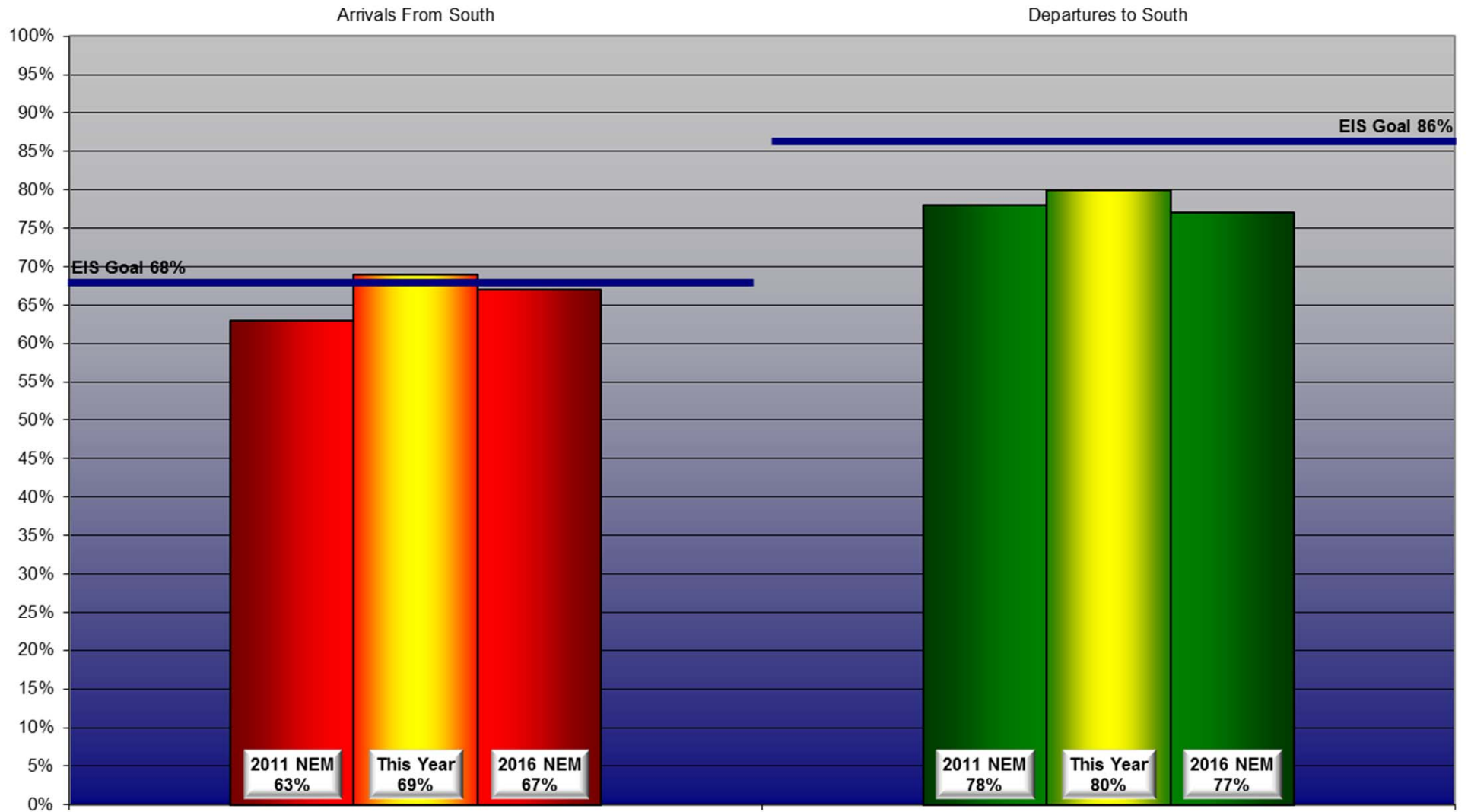
		% of all arrivals from the south										% of all departures to the south									
Date	Day	* in compliance	Runway #						Unknown Runway Use	Notes / Comments		** in compliance	Runway #						Unknown Runway Use	Notes / Comments	
			11	17L	17R	29	35L	35R					11	17L	17R	29	35L	35R			
06/03/13	Mon	98%			2			52	46	0		96%			37	59		2	2	0	
06/04/13	Tue	94%			6			59	35	0		98%			42	56		1	1	0	
06/05/13	Wed	72%			10	18		34	38	0		99%			41	58		1		0	
06/06/13	Thu	94%			4	2		51	43	0		89%			40	49		6	5	0	
06/07/13	Fri	95%				5		56	39	0		89%			29	60		6	5	0	
06/08/13	Sat																				
06/09/13	Sun																				
06/10/13	Mon	95%			5			51	44	0		90%			41	49		5	5	0	
06/11/13	Tue	93%			6	1		54	39	0		97%			41	56		2	1	0	
06/12/13	Wed	0%			44	56				0	210-220@11-14knts,G19	100%			41	59				0	
06/13/13	Thu	100%						55	45	0		10%			4	6		57	33	0	340-360@5-7knts
06/14/13	Fri	94%			6			56	38	0		96%			36	60		1	3	0	
06/15/13	Sat																				
06/16/13	Sun																				
06/17/13	Mon	97%			3			55	42	0		79%			36	43		14	7	0	040-350@3-9knts,RA
06/18/13	Tue	96%			4			53	43	0		90%			42	48		4	6	0	
06/19/13	Wed	94%			6			50	44	0		96%			46	50		2	2	0	
06/20/13	Thu	93%			6	1		57	36	0		98%			40	58			2	0	
06/21/13	Fri	15%			33	52		7	8	0	160-200@3-10knts	98%			41	57			2	0	
06/22/13	Sat																				
06/23/13	Sun																				
06/24/13	Mon	94%		4	2			56	38	0		98%			44	54		1	1	0	
06/25/13	Tue	1%		44	55				1	0	170-220@6-9knts	68%			30	38		15	17	0	330-110@5-21knts,G25,TSRA
06/26/13	Wed	0%		57	43					0	110-040@5-12knts,TSRA	100%			39	61				0	
06/27/13	Thu	97%		1	2			57	40	0		28%			8	20		32	40	0	230-290@5-12knts,G17
06/28/13	Fri	94%		4	2			58	36	0		90%			42	48		3	7	0	

Preferred Flow

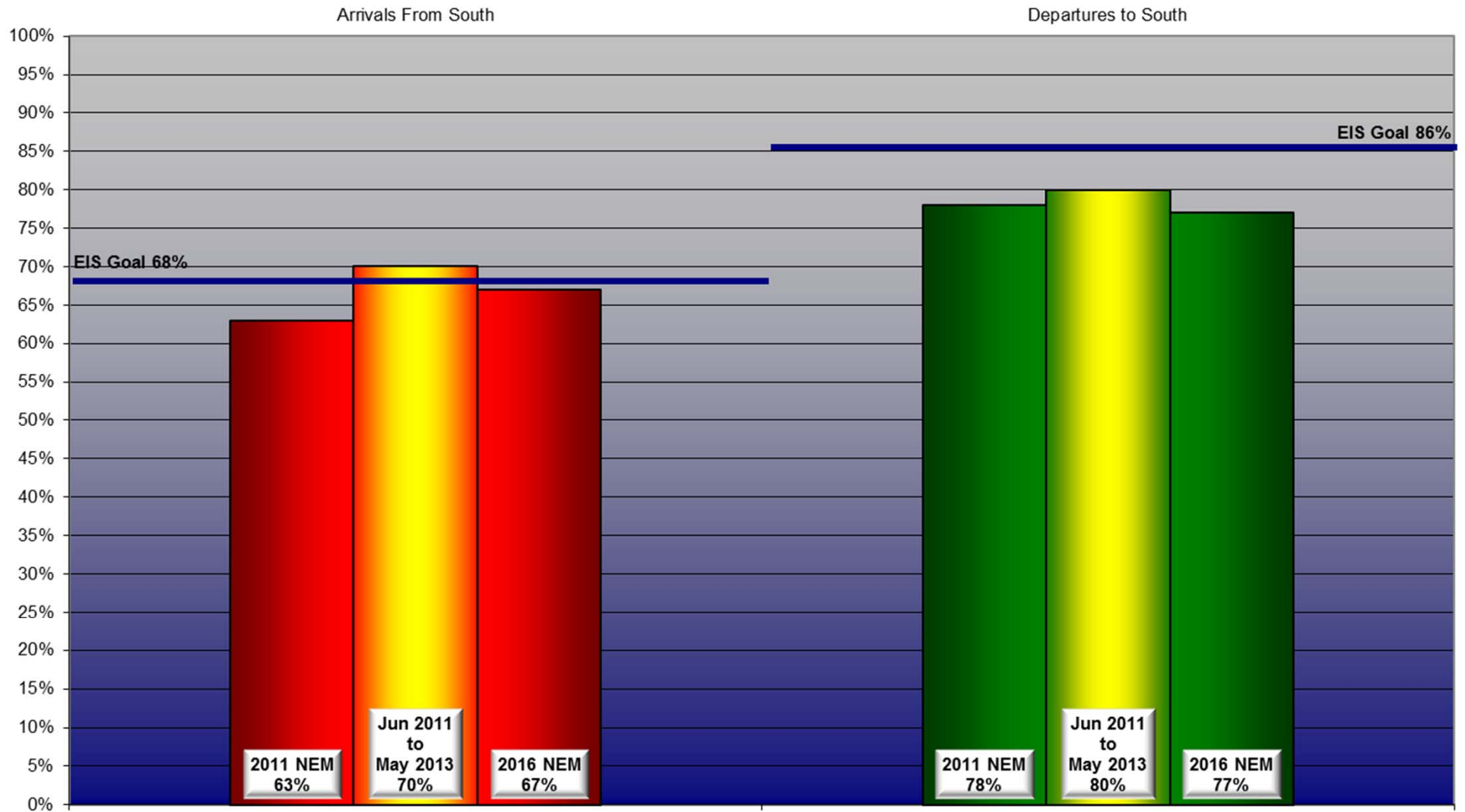
DATIS Reported Conditions Indicate
Support for Non-Preferred Flow

DATIS Reported Conditions Do Not Indicate
Support for Non-Preferred Flow

Yearly Contraflow As Of June 28, 2013



Contraflow July 2011 - June 2013



Year-to-Year by Month Percent*

Contraflow

Arrivals From the South (Goal 68%)										Departures to the South (Goal 86%)									
	<u>2006</u>	<u>2007</u>	<u>2008</u>	<u>2009</u>	<u>2010</u>	<u>2011</u>	<u>2012</u>	<u>2013</u>	<u>Avg</u>		<u>2006</u>	<u>2007</u>	<u>2008</u>	<u>2009</u>	<u>2010</u>	<u>2011</u>	<u>2012</u>	<u>2013</u>	<u>Avg</u>
Jan	54%	39%	50%	63%	94%	91%	62%	72%	66%	Jan	68%	80%	80%	74%	54%	71%	80%	65%	72%
Feb	57%	77%	50%	49%	90%	73%	69%	77%	68%	Feb	74%	76%	74%	81%	71%	63%	74%	78%	74%
Mar	64%	52%	52%	46%	80%	52%	61%	87%	62%	Mar	65%	78%	68%	67%	82%	72%	96%	77%	76%
Apr	61%	61%	44%	53%	57%	47%	78%	60%	58%	Apr	78%	67%	92%	84%	84%	83%	76%	89%	82%
May	71%	71%	66%	66%	56%	69%	72%	46%	65%	May	70%	84%	78%	84%	87%	85%	81%	85%	82%
Jun	84%	64%	38%	72%	66%	61%	79%	76%	68%	Jun	89%	85%	93%	81%	96%	93%	87%	80%	88%
Jul	84%	84%	75%	72%	61%	91%	62%		66%	Jul	88%	85%	84%	82%	90%	88%	92%		76%
Aug	84%	69%	92%	61%	59%	82%	49%		62%	Aug	79%	87%	77%	96%	92%	91%	91%		77%
Sep	84%	79%	91%	89%	70%	85%	55%		69%	Sep	84%	89%	73%	82%	73%	64%	92%		70%
Oct	84%	54%	76%	42%	80%	88%	62%		61%	Oct	76%	68%	77%	71%	78%	63%	78%		64%
Nov	84%	58%	66%	74%	85%	55%	84%		63%	Nov	83%	77%	74%	73%	77%	72%	81%		67%
Dec	84%	53%	58%	71%	67%	70%	64%		58%	Dec	82%	74%	62%	65%	78%	65%	67%		62%
Avg	75%	63%	63%	63%	72%	72%	66%	70%		Avg	78%	79%	78%	78%	80%	76%	83%	79%	

*Number is percentage of all operations between 10:00 PM - 7:00 AM



***LOUISVILLE
REGIONAL
AIRPORT
AUTHORITY®***

NOISE COMMENT REPORT

May 2013

Comments (SDF/LOU)

May 2013*

Street	Zip Code	Time Received	Time	Airport	Disturbance Type	CNF Quad	Status	Operation or Comment Type ¹	Deviation Type ²	Comments
Packard	40217	2013-05-02 13:21:48	2013-05-02 13:21:48	SDF	Other	NE	Investigated	LQHP	None	I am a new homeowner and would like to be included in the program.
Melford AV	40217	2013-05-07 13:21:48	2013-05-07 13:21:48	SDF	Other	NE	Investigated	LQHP	None	I would like to know the timeline for work and what products are used in the program.
Larue AV	40313	2013-05-07 13:21:48	2013-05-07 13:21:48	SDF	Other	NE	Investigated	LQHP	None	I would like for you to recheck the eligibility of my home for the quieter home project. There have been several homes in our neighborhood that have qualified and had work completed. One home is just a couple of houses up the road from mine. We have been woken up several times by low flying planes usually between 4:00 AM and 6:00 AM. I feel that if we are deemed ineligible they need to re-evaluate the neighborhood again and take into account different flight patterns due to bad weather or wind. There are several houses that didn't qualify who have a qualifying house right across the street. That does not make any sense.
Audubon PKY	40213	2013-05-10 13:21:48	2013-05-10 13:21:48	SDF	Other	NE	Investigated	LQHP	None	Homeowner wanted to know if he was eligible for the program.
Eastern PKY	4017	2013-05-14 13:21:48	2013-05-14 13:21:48	SDF	Other	NE	Investigated	LQHP	None	Homeowner called to inquire about eligibility. He said that his neighbor said they were in the program. He has looked at the website and said he was just outside the line.
Louisa AV	40217	2013-05-15 13:21:48	2013-05-15 13:21:48	SDF	Other	NE	Investigated	LQHP	None	Homeowner came over to ask about letters that the neighbors were getting about repairs to their homes.
Louisa AV	40217	2013-05-16 13:21:48	2013-05-16 13:21:48	SDF	Other	NE	Investigated	LQHP	None	Daughter of homeowner called to check on program and status.
Wolfe AV	40217	2013-05-22 13:21:48	2013-05-22 13:21:48	SDF	Other	NE	Investigated	LQHP	None	Homeowner's mother called to tell that son has closed on house and would like to receive an application for the program.

1. **Standard:** Indicates the "Most Preferred" runway configuration was being utilized at the time of the comment.
Non Standard: Indicates that a "Lesser Preferred" runway configuration was being utilized at the time of the comment.
QHP: QuieterHome Program

2. This column is used to indicate the conditions which most likely necessitated a deviation from the standard procedures.

* Comments received by email may not appear in this report

Comments (SDF/LOU)

May 2013*

Street	Zip Code	Time Received	Time	Airport	Disturbance Type	CNF Quad	Status	Operation or Comment Type ¹	Deviation Type ²	Comments
Fetter AV	40217	2013-05-29 13:21:48	2013-05-29 13:21:48	SDF	Other	NE	Investigated	LQHP	None	Assistant for homeowner called to ask about the program and if the home she just purchased was in the program.
W. Southern Heights AV	40215	2013-05-31 13:21:48	2013-05-31 13:21:48	SDF	Other	NW	Investigated	LQHP	None	Homeowner called and stated that an engineering firm came and spent a couple days in his yard with equipment set up to check decibels. They said the noise exceeded the acceptable "law". The bottom line is they did not follow up and do anything. He got the name QHP from his sister. Said it is traffic noise that is most disturbing. The noise wakes him up and gets him upset.
							Received	LQHP	10	
Eastern PKY	40217	2013-05-07 10:10:01	2013-05-07 03:00:00	SDF	Too Much Noise	NE	Investigated	Non-Standard	Weather	Several years ago I saw a map in the Courier-Journal that said we may be eligible for double paned windows. Every night from about 3:00 AM to 6:30 AM the planes come over and make so much noise that I cannot sleep.
Teal AV	40213	2013-05-07 15:49:01	2013-05-07 13:00:00	SDF	Over Use of Runway	NE	Investigated	Non-Standard	None	I would like to talk with you about the noise and flight patterns at the airport. Things appear to have changed the last few days.
Melford AV	40217	2013-05-08 11:29:01	2013-05-08 03:00:00	SDF	Aircraft Off Course	NE	Investigated	Non-Standard	Ops	I live in Parkway Village; I am still having problems with airplanes coming over our house. There were people out here surveying or checking on the houses from Alexander up to Preston. They are telling us that you are going to do their houses to alleviate the noise and we are the second house on the other side of Alexander. This morning a plane has been directly over my house taking off and on August the 23rd of 2012 I was up all night from 11:25 PM until 4:00 AM and the planes came over here every 3 to 4 minutes. I have got the times down from 11:25 PM until 12:04 AM. I could not sleep and I am getting tired of putting up with them. I don't see why the people up toward Preston get it and we don't, and they are coming over us instead of the people near the funeral home and up towards Preston. We get more over our house and if you all would just come out here and sit you could see that they are coming over our house, and I don't think it is fair to the residents here to do without and the people up the street are getting the relief, and they are not coming over their house.

1. **Standard:** Indicates the "Most Preferred" runway configuration was being utilized at the time of the comment.
Non Standard: Indicates that a "Lesser Preferred" runway configuration was being utilized at the time of the comment.
QHP: QuieterHome Program

2. This column is used to indicate the conditions which most likely necessitated a deviation from the standard procedures.

* Comments received by email may not appear in this report

Comments (SDF/LOU)

May 2013*

Street	Zip Code	Time Received	Time	Airport	Disturbance Type	CNF Quad	Status	Operation or Comment Type ¹	Deviation Type ²	Comments
Northwestern PKY	40212	2013-05-10 10:28:12	2013-05-09 23:40:00	OTH	Aircraft Too Low	NW	Investigated	Non-Standard	Ops	I would like to issue a complaint and find out who was operating the helicopter in the west end last night. Between 11:40 PM and 11:45 PM it went over my house twice. I could feel it inside my house the helicopter was so low. I would like to know the company that it belongs to or the TV station it belongs to so I can issue a formal complaint.
S 3rd ST	40208	2013-05-13 16:12:41	2013-05-13 15:30:00	SDF	Aircraft Off Course	NW	Investigated	Non-Standard	Weather	The planes are taking off from the west runway and heading north. They used to go off to the west before they got up to the heart of the campus. They seem to be going a little further north before they turn off to the west. Has there been a change in the guidance on this?
Lacona LN	40213	2013-05-15 14:09:41	2013-05-15 04:00:00	SDF	Too Much Noise	SE	Investigated	Standard	None	Myself and my neighbors have all gotten together about the noise which I guess is coming from the airport at around 4-4:30 AM. It is rattling our windows and waking us up. This has been going on for a long, long time. I just did not know who to call. Could you please call me back?
Greenup RD	40217	2013-05-22 11:11:40	2013-05-22 10:00:00	SDF	Other	NE	Investigated	Standard	None	Over of the course of the last several months, the number of complaints regarding airport noise has been increasing dramatically. This type of noise pollution has a negative impact on the residents' quality of life in my district. I am writing to you for assistance in this matter because I have no other recourse. Many of these residents have contacted the LRAA or have been to the Community Noise Forum, but do not feel that their complaints are being heard. I would appreciate your sending a response to my constituent listed below. As President of the Metro Council, I am dedicated and committed to addressing the concerns and needs of all citizens of Metro Louisville. Thank you in advance for your prompt attention to this matter.
Alder Avenue	40213	2013-05-25 13:58:21	2013-05-28 11:27:21	SDF	Other	SE	Investigated	Standard	None	I was watching TV when I heard a loud noise. When I went outside I noticed that the bricks had fallen off the side of my house. I know it had to be from the airplanes.
Fetter AV	40217	2013-05-31 00:54:06	2013-05-30 22:54:00	SDF	Too Much Noise	NE	Investigated	Non-Standard	Weather	I have been lying in bed for two hours now trying to fall asleep but I can't because the planes are screaming over my house. This is not the first time this week but this is my first call because I am really, really just po'ed.

1. **Standard:** Indicates the "Most Preferred" runway configuration was being utilized at the time of the comment.
Non Standard: Indicates that a "Lesser Preferred" runway configuration was being utilized at the time of the comment.
QHP: QuieterHome Program

2. This column is used to indicate the conditions which most likely necessitated a deviation from the standard procedures.

* Comments received by email may not appear in this report

Comments (SDF/LOU)

May 2013*

Street	Zip Code	Time Received	Time	Airport	Disturbance Type	CNF Quad	Status	Operation or Comment Type ¹	Deviation Type ²	Comments
W. Ormsby	40203	2013-05-31 23:30:06	2013-05-30 22:54:00	SDF	Over Use of Runway	NW	Investigated	Non-Standard	Weather	It is the night of May 31 and it is around 11:20 PM and we have airplanes buzzing overhead again. The air is dead calm outside. I cannot believe that there is any wind from the south that requires them to land from the north. We have had 23 business nights this month, 13 have had airplanes coming in from the north. Since the 8th there have been 13. So since May 8, only business nights 13, 16, 23, and 24 did not have planes flying over. Will you please give me a call back and let me know if it is legit to have airplanes flying because there seems to be almost no wind.
							Received	LRAA	10	

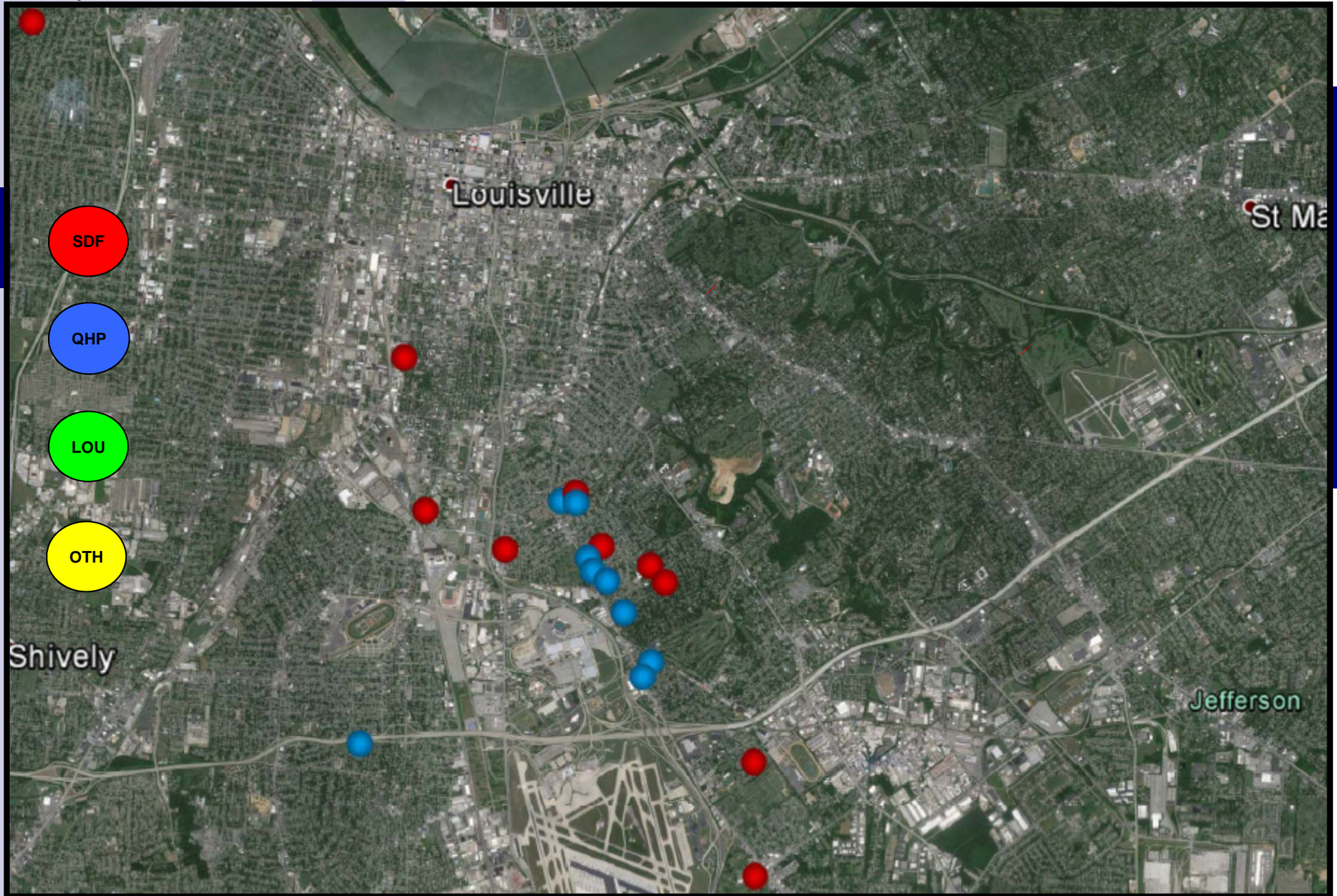
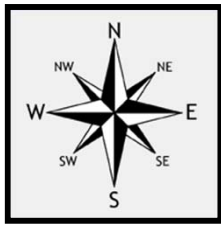
1. **Standard:** Indicates the “Most Preferred” runway configuration was being utilized at the time of the comment.
Non Standard: Indicates that a “Lesser Preferred” runway configuration was being utilized at the time of the comment.
QHP: QuieterHome Program

2. This column is used to indicate the conditions which most likely necessitated a deviation from the standard procedures.

* Comments received by email may not appear in this report

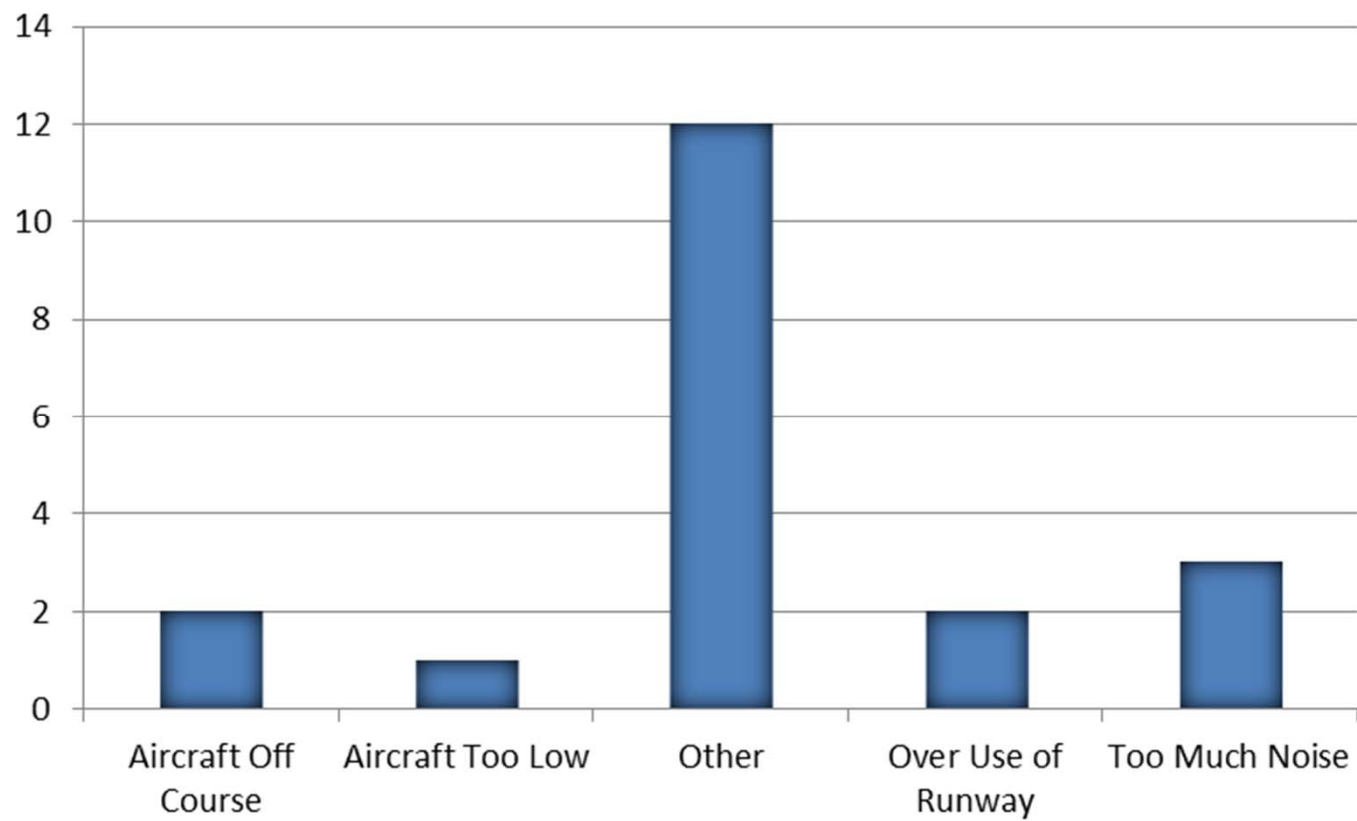
Comment Location (SDF and LOU)

May 2013



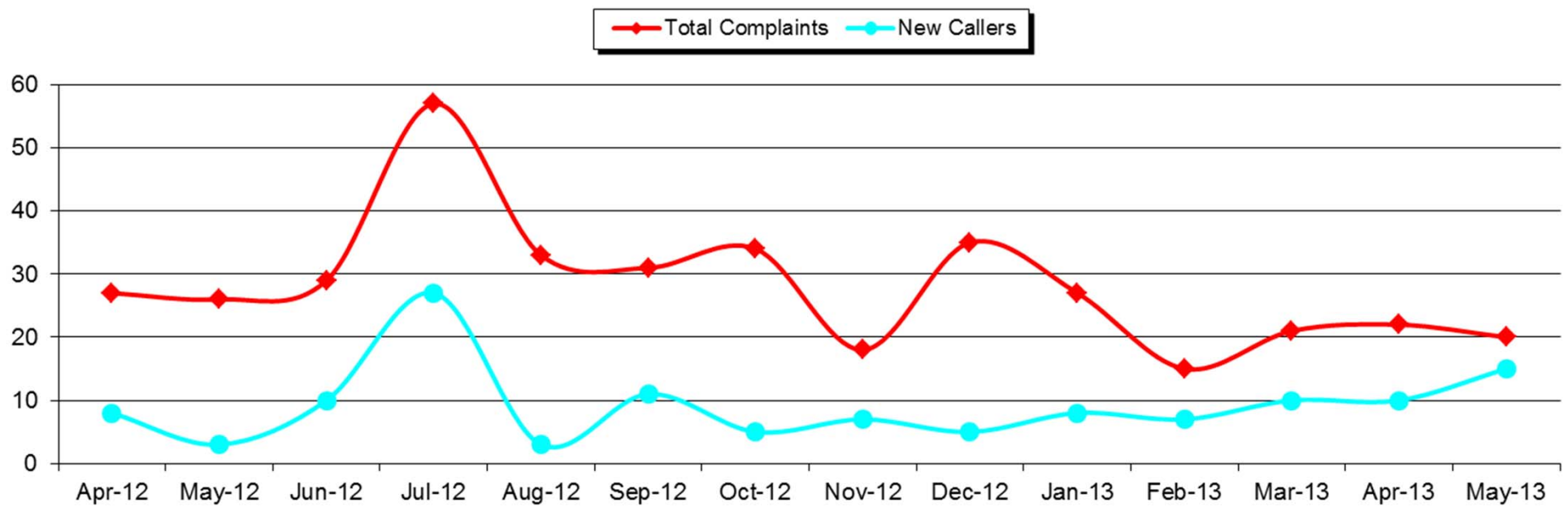
Comment Type* (SDF and LOU)

May 2013



New Address/Comments per Month (SDF and LOU)

May 2013





***LOUISVILLE
REGIONAL
AIRPORT
AUTHORITY®***

NOISE COMMENT REPORT

June 2013

Comments (SDF/LOU)

June 2013*

Street	Zip Code	Time Received	Time	Airport	Disturbance Type	CNF Quad	Status	Operation or Comment Type ¹	Deviation Type ²	Comments
Parkway DR	40217	2013-06-04 14:21:49	2013-06-04 14:21:49	SDF	Other	NE	Investigated	LQHP	None	Homeowner came by to check on eligibility.
Melford AV	40217	2013-06-06 14:21:49	2013-06-06 14:21:49	SDF	Other	NE	Investigated	LQHP	None	I attended the meeting earlier this week and was wondering if you could send me copy of the PowerPoint you used or any info with the products or services provided in the full vs. the partial package.
Perennial DR	40217	2013-06-11 14:21:49	2013-06-11 14:21:49	SDF	Other	NE	Investigated	LQHP	None	Homeowner called and is very upset about the program change. She wanted to know how come the program can change when we have been using the same guidance for Phases 1-3. She isn't sure about participation and said that she knows her legal rights and that she knows she has to be tested.
E Barbee AV	40217	2013-06-11 14:21:49	2013-06-11 14:21:49	SDF	Other	NE	Investigated	LQHP	None	Homeowner called and asked about being in the program.
Linwood AV	40217	2013-06-17 14:21:49	2013-06-17 14:21:49	SDF	Other	NE	Investigated	LQHP	None	Could you please tell me if my home is eligible for the Quieter Home Program? If so, I understand it will be implemented in phases so I'd also like to know which phase I'd be in and when that phase, is likely to occur. Finally, can you tell me based on my address what sort of work would be done to my house?
Hess LN	40217	2013-06-17 14:21:49	2013-06-17 14:21:49	SDF	Other	NE	Investigated	LQHP	None	Homeowner called and said her friend was in the program and wanted to see if she was.
Louisa AV	40217	2013-06-18 14:21:49	2013-06-18 14:21:49	SDF	Other	NE	Investigated	LQHP	None	Homeowner called to say the neighbor across the street and others were in the program and he wanted to be included.
Farmdale AV	40213	2013-06-18 14:21:49	2013-06-18 14:21:49	SDF	Other	NE	Investigated	LQHP	None	Homeowner called to see if his home was in the program area.
Maylawn AV	40217	2013-06-18 14:21:49	2013-06-18 14:21:49	SDF	Other	NE	Investigated	LQHP	None	Homeowner called to see if he was in the program.

1. **Standard:** Indicates the “Most Preferred” runway configuration was being utilized at the time of the comment.
Non Standard: Indicates that a “Lesser Preferred” runway configuration was being utilized at the time of the comment.
QHP: QuieterHome Program

2. This column is used to indicate the conditions which most likely necessitated a deviation from the standard procedures.

*Comments received by email may not appear in this report

Comments (SDF/LOU)

June 2013*

Street	Zip Code	Time Received	Time	Airport	Disturbance Type	CNF Quad	Status	Operation or Comment Type ¹	Deviation Type ²	Comments
Reading RD	40217	2013-06-19 14:21:49	2013-06-19 14:21:49	SDF	Other	NE	Investigated	LQHP	None	I was wondering if you could tell me when to expect a letter about the QuieterHome project. We live on Reading Road. I believe we are in the "Phase 6" area.
Delor AV	40217	2013-06-19 14:21:49	2013-06-19 14:21:49	SDF	Other	NE	Investigated	LQHP	None	Homeowner called to ask about how he could qualify for the program.
Larue AV	40213	2013-06-24 14:21:49	2013-06-24 14:21:49	SDF	Other	NE	Investigated	LQHP	None	Homeowner called because she saw the testing on her street and wanted to know about her property.

1. **Standard:** Indicates the "Most Preferred" runway configuration was being utilized at the time of the comment.
Non Standard: Indicates that a "Lesser Preferred" runway configuration was being utilized at the time of the comment.
QHP: QuieterHome Program

2. This column is used to indicate the conditions which most likely necessitated a deviation from the standard procedures.

*Comments received by email may not appear in this report

Comments (SDF/LOU)

June 2013*

Street	Zip Code	Time Received	Time	Airport	Disturbance Type	CNF Quad	Status	Operation or Comment Type ¹	Deviation Type ²	Comments
Louisa AV	40217	2013-06-24 14:21:49	2013-06-24 14:21:49	SDF	Other	NE	Investigated	LQHP	None	I have been to one of the neighborhood meetings and I have seen the website. I understand how the lines were drawn. Surely there is some sort of appeal process. At the George Rogers Clark neighborhood meeting a couple of years ago, I specifically asked how strict the lines were. I was told that the program tried to humanize the boundary. We have a second story on our house with windows of both bedrooms facing the flight path. Our roofline and living spaces are significantly more elevated than the other houses on our side of the street, putting us closer to the source of the noise. If anything, being across the street carries the sound more than if we had closer houses and vegetation to buffer the noise. If you take a look at the houses on our street, you will see they were constructed in the 50's where the ones behind us in the Glenafton subdivision were built in the 60's. The older homes generally lacked adequate insulation. I believe the measurements used to make those maps were done in 2011. I would like to challenge the assumption that there have not been significant changes. Many of the mature trees in the area have been removed in the last few years. Also, it seems there has been an increase in C130 traffic. Perhaps they are flying aide to one of many disasters over the last couple of years. Their landing path tends to be much more to the east of the commercial flights. Many times they fly in and you can tell it is not at landing speed and then they loop back around and often fly directly over our house. You can feel the hardwood floors vibrate and hear the windows rattle from their rumble. I am sure you have heard similar arguments before. Is there an option to measure the noise impact to our house to verify that we do or do not meet the threshold DNL?
Parklawn DR	40217	2013-06-24 14:21:49	2013-06-24 14:21:49	SDF	Other	NE	Investigated	LQHP	None	Homeowner called to inquire about eligibility. It is unfair because he is in the vicinity. The vibration and noise pollution makes his entire house shake and rattles the windows. The children have to cover their ears. He wants to see about the airport testing his home individually or how would he go about getting an independent test on his home to see if he would qualify. He said that UPS is going to be bringing in larger planes.

1. **Standard:** Indicates the "Most Preferred" runway configuration was being utilized at the time of the comment.
Non Standard: Indicates that a "Lesser Preferred" runway configuration was being utilized at the time of the comment.
QHP: QuieterHome Program

2. This column is used to indicate the conditions which most likely necessitated a deviation from the standard procedures.

*Comments received by email may not appear in this report

Comments (SDF/LOU)

June 2013*

Street	Zip Code	Time Received	Time	Airport	Disturbance Type	CNF Quad	Status	Operation or Comment Type ¹	Deviation Type ²	Comments
Louisa AV	40217	2013-06-24 14:21:49	2013-06-24 14:21:49	SDF	Other	NE	Investigated	LQHP	None	We live on Louisa just outside of the eligibility area. I have noticed the testing trucks on our street the last few days. I would like to know how I could petition to be included in the program.
Larue AV	40213	2013-06-24 14:21:49	2013-06-24 14:21:49	SDF	Other	NE	Investigated	LQHP	None	The father of the homeowner called to see about going back to previous phases to do those that were not completed.
Keswick BVD	40217	2013-06-26 14:21:49	2013-06-26 14:21:49	SDF	Other	NE	Investigated	LQHP	None	Homeowner called to ask if they were in the program.
Linwood AV	40217	2013-06-26 14:21:49	2013-06-26 14:21:49	SDF	Other	NE	Investigated	LQHP	None	Homeowner's son called and asked about the program.
Parklawn DR	40217	2013-06-27 14:21:49	2013-06-27 14:21:49	SDF	Other	NE	Investigated	LQHP	None	Homeowner called to ask if they were in program.
							Received	LQHP	19	
S. 2nd ST	40214	2013-06-02 16:37:13	2013-06-02 06:00:13	SDF	Over Use of Runway	SW	Investigated	Non-Standard	Weather	I would like for you to give me a call back and let me know why UPS is constantly flying over our house today.
Hawthorne	40205	2013-06-05 14:13:35	2013-06-05 13:30:00	LOU	Too Much Noise	NE	Investigated	Standard	None	I would like for you to call me back about the noise at Bowman Field. There is a red bi-plane that flies really low over this area. It is mostly on weekends. Most of the planes are not that bad. However, when this one comes over it is so loud that you cannot even carry on a conversation.
Mccoy AV	40215	2013-06-17 18:41:27	2013-06-17 18:38:00	SDF	Aircraft Off Course	NW	Investigated	Non-Standard	Weather	The last time we spoke you said those planes did not come over here. I just saw one come over at 6:38 AM. A UPS plane flew directly over McCoy Avenue. Same damn sound, I just happened to be sitting outside.
Fetter AV	40217	2013-06-19 12:00:35	2013-06-19 11:50:00	SDF	Too Much Noise	NE	Investigated	Standard	None	The plane that just took off was ridiculous. Give me a call.

1. **Standard:** Indicates the "Most Preferred" runway configuration was being utilized at the time of the comment.
Non Standard: Indicates that a "Lesser Preferred" runway configuration was being utilized at the time of the comment.
QHP: QuieterHome Program

2. This column is used to indicate the conditions which most likely necessitated a deviation from the standard procedures.

*Comments received by email may not appear in this report

Comments (SDF/LOU)

June 2013*

Street	Zip Code	Time Received	Time	Airport	Disturbance Type	CNF Quad	Status	Operation or Comment Type ¹	Deviation Type ²	Comments
Russell AV	40213	2013-06-26 11:35:06	2013-06-26 03:00:00	SDF	Aircraft Off Course	NE	Investigated	Non-Standard	Weather	I live in the Camp Taylor neighborhood and we were up all night with the airplanes going over. Have you changed the operations at the airport? If you have it was so bad that we will have to move.
Skylight DR	40258	2013-06-26 06:36:40	2013-06-26 06:00:00	SDF	Too Much Noise	SW	Investigated	Standard	Weather	Please give me a call back about the noise your planes are making. The planes are getting lower and lower over in this area. I could have moved into Audubon Park but I did not want the planes flying over all the time. Yesterday morning I counted 12 planes that went over low enough to see who was flying them. They are headed out to the river. I have a voice activated recorder on my front porch and they are loud enough to turn that on.
Audubon PKY	40213	2013-06-28 09:57:46	2013-06-28 03:00:00	SDF	Over Use of Runway	NE	Investigated	Non-Standard	Weather	This morning's reversed contraflow departure bank provided an especially harsh wake-up call to neighborhoods northeast of the airfield, since the wind was from almost due west (280°), so departing aircraft tended to drift directly over the impacted area. Note that at 280°, it is virtually impossible to generate enough runway component to require north flow, since at 20 knots it would exceed crosswind tolerance. With winds at 8 to 10 knots, the runway component observed was more in the 2 to 4 knot range, leaving little explanation for the pounding that went on throughout the period. The improper flow continued on into the late-morning reverse-flow practice, for equally baffling reasons. As noted so often since their development was endorsed in the Louisville noise program more than a decade ago, modern decision aids could avoid miscues like this.
							Received	LRAA	7	

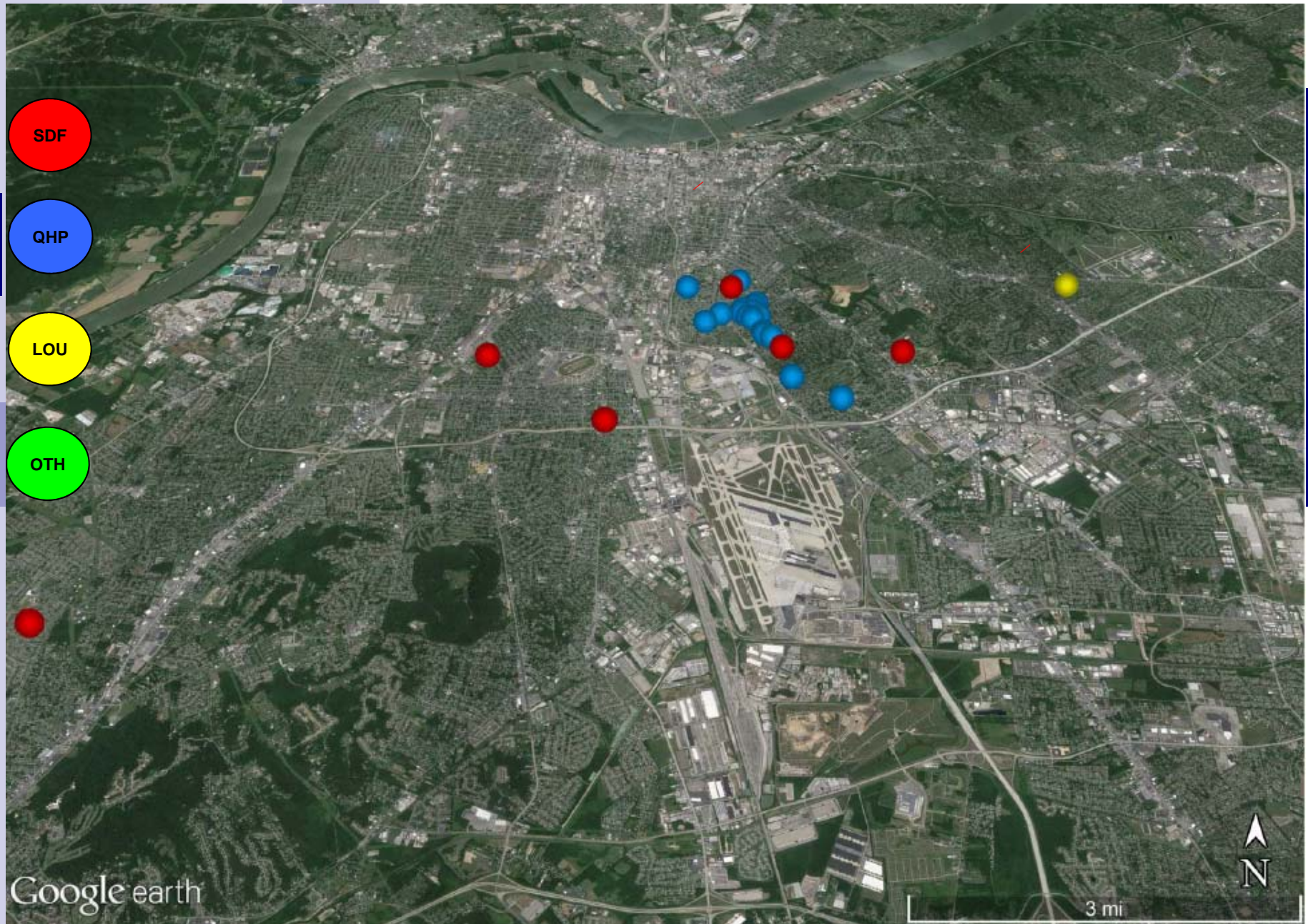
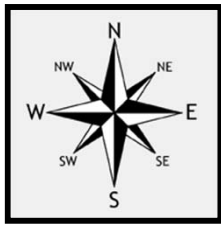
1. **Standard:** Indicates the "Most Preferred" runway configuration was being utilized at the time of the comment.
Non Standard: Indicates that a "Lesser Preferred" runway configuration was being utilized at the time of the comment.
QHP: QuieterHome Program

2. This column is used to indicate the conditions which most likely necessitated a deviation from the standard procedures.

*Comments received by email may not appear in this report

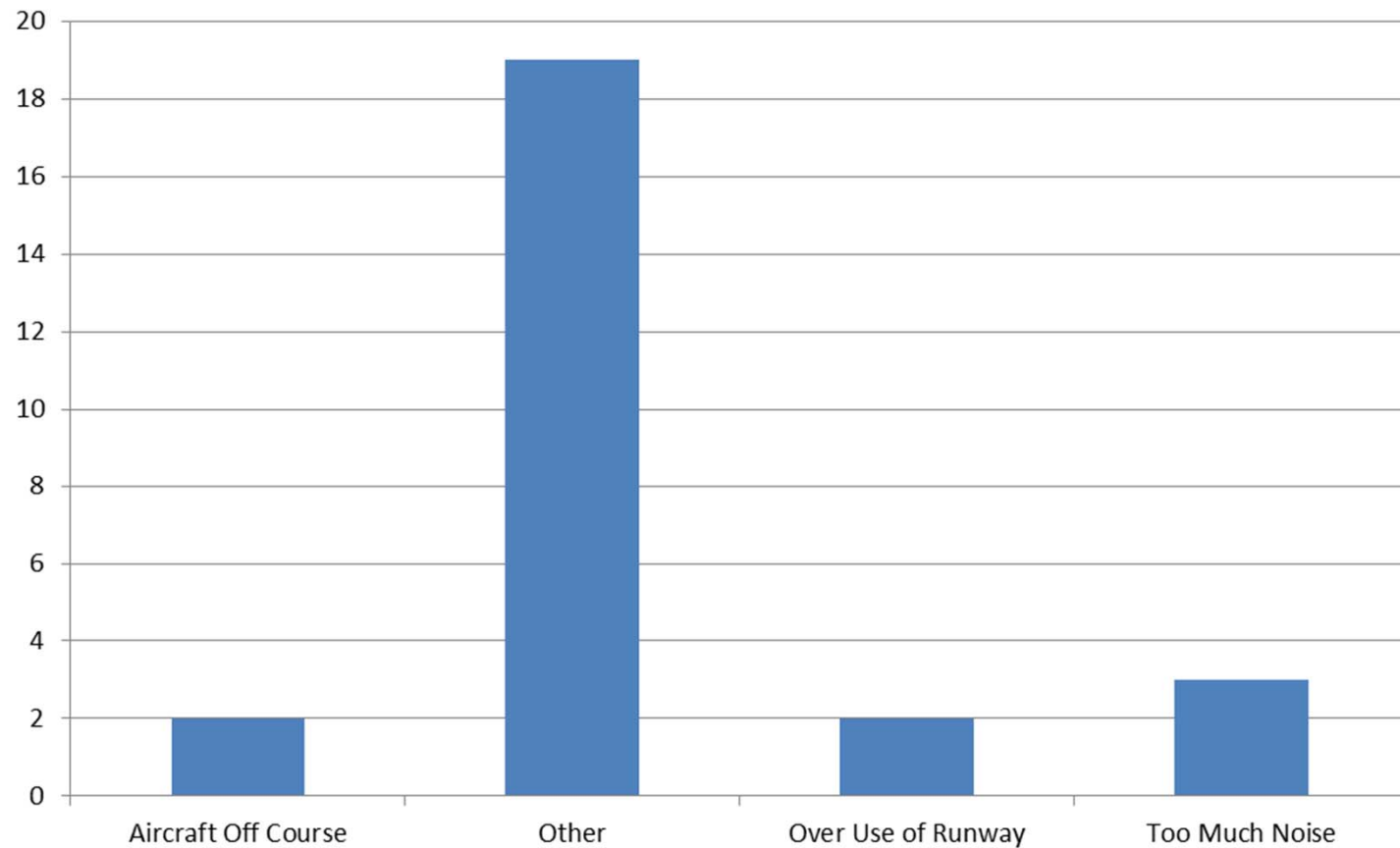
Comment Location (SDF and LOU)

June 2013



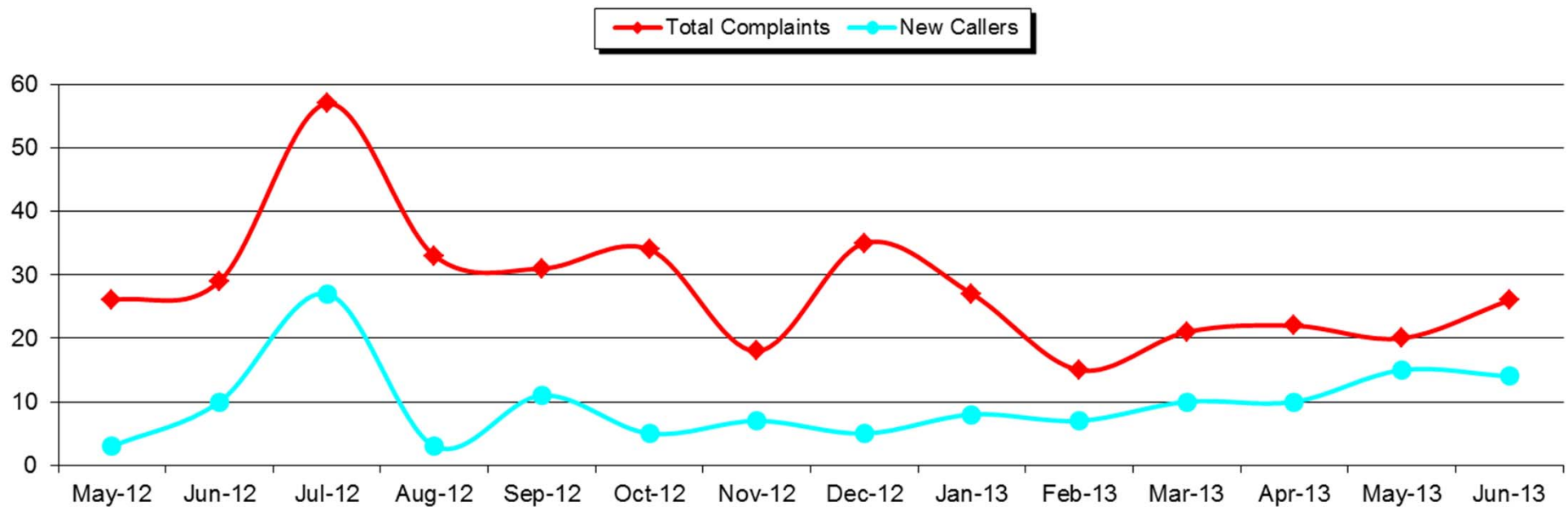
Comment Type* (SDF and LOU)

June 2013



New Address/Comments per Month (SDF and LOU)

June 2013





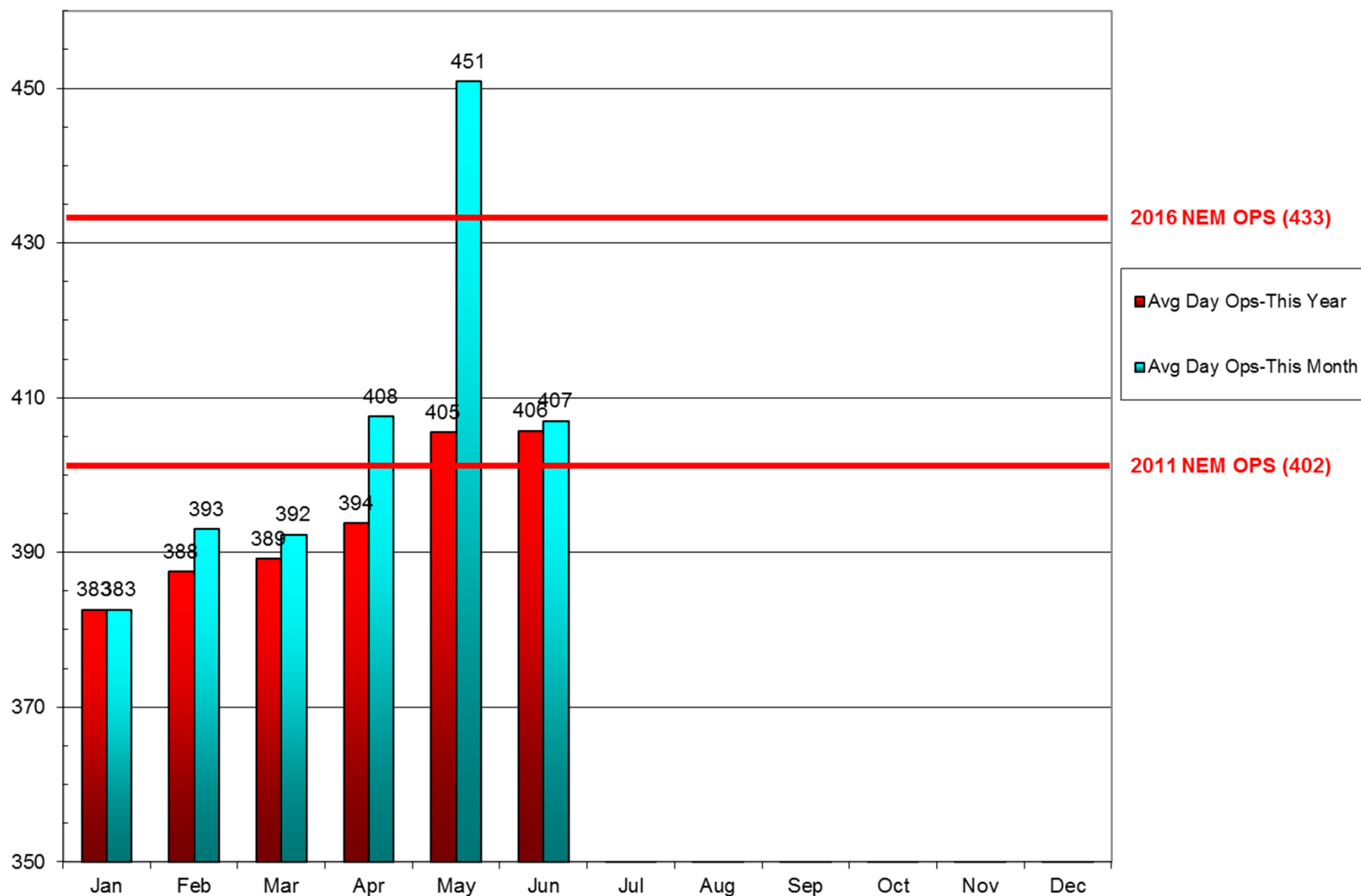
***LOUISVILLE
REGIONAL
AIRPORT
AUTHORITY®***

RUNWAY UTILIZATION AND AIRCRAFT TYPES

May / June 2013

Operations (SDF)

As of June 30, 2013



Source: Louisville <http://www.flylouisville.com/regional-airport-authority/reports-and-statistics/>

Daily Runway Use Uncorrected (SDF) May 2013

[illegible]

Daily Runway Use (SDF)

Tower Comments May 2013

Day	Date	Time	Comment
wed	1-May-13		
thu	2-May-13	0930-1230	Wind forecast 1807, traffic volume
fri	3-May-13	2200-2400	20 kt tailwind short final
sat	4-May-13	0000-0230	20 kt tailwind short final
sun	5-May-13		
mon	6-May-13	1800-1900	Wind 1515
tue	7-May-13	0700-0930	Wet runways
tue	7-May-13	1300-1600	Reason not documented.
wed	8-May-13	1630-2200	Wind 0311
thu	9-May-13		
fri	10-May-13		
sat	11-May-13		
sun	12-May-13	0200-0500	Logs show south 0200-0400, north @ 0401 wind 3211
mon	13-May-13	2030-2200	Wind 3212
tue	14-May-13	2200-2400	Wind 2434 on short final
wed	15-May-13	0000-0230	Wind 1907, 2435 on short final
	15-May-13	2200-2400	Wind 2416
thu	16-May-13	0000-0230	Traffic volume (UPS inbound)
fri	17-May-13	0930-1230	R3704 activity
	17-May-13	2200-2400	Wind 1718 on short final
sat	18-May-13	0000-0230	Wind 1718 on short final
sun	19-May-13		
mon	20-May-13		
tue	21-May-13		
wed	22-May-13		
thu	23-May-13		
fri	24-May-13	2000-2200	Wind 3509
sat	25-May-13		
sun	26-May-13		
mon	27-May-13	0930-1230	Forecast wind 2210G18
tue	28-May-13		
wed	29-May-13		
thu	30-May-13		
fri	31-May-13		

Daily Runway Use Uncorrected (SDF) June 2013

Daily Runway Use - June 2013																																	
Flow	Time	Sat 6/1	Sun 6/2	Mon 6/3	Tue 6/4	Wed 6/5	Thu 6/6	Fri 6/7	Sat 6/8	Sun 6/9	Mon 6/10	Tue 6/11	Wed 6/12	Thu 6/13	Fri 6/14	Sat 6/15	Sun 6/16	Mon 6/17	Tue 6/18	Wed 6/19	Thu 6/20	Fri 6/21	Sat 6/22	Sun 6/23	Mon 6/24	Tue 6/25	Wed 6/26	Thu 6/27	Fri 6/28	Sat 6/29	Sun 6/30	Time	
North Flow	0:00																																0:00
	0:30																																0:30
	1:00																																1:00
	1:30																																1:30
	2:00																																2:00
	2:30																																2:30
South Flow	3:00																																3:00
	3:30																																3:30
	4:00																											XXX					4:00
	4:30																																4:30
	5:00																																5:00
	5:30																																5:30
	6:00																											XXX					6:00
	6:30																													XXX			6:30
	7:00																																7:00
	7:30																																7:30
	8:00																																8:00
	8:30																																8:30
9:00																																9:00	
North Flow	9:30																																9:30
	10:00																																10:00
	10:30																																10:30
	11:00																																11:00
	11:30																																11:30
	12:00																																12:00
South Flow	12:30																																12:30
	13:00																																13:00
	13:30																																13:30
	14:00																																14:00
	14:30																																14:30
	15:00																																15:00
	15:30																																15:30
	16:00																																16:00
	16:30																																16:30
	17:00																																17:00
	17:30																																17:30
	18:00																																18:00
	18:30																																18:30
	19:00																																19:00
	19:30																																19:30
	20:00																																20:00
	20:30																																20:30
	21:00																																21:00
	21:30																																21:30
North Flow	22:00																																22:00
	22:30																																22:30
	23:00																																23:00
	23:30																																23:30
0:00																																0:00	
Flow	Time	Sat 6/1	Sun 6/2	Mon 6/3	Tue 6/4	Wed 6/5	Thu 6/6	Fri 6/7	Sat 6/8	Sun 6/9	Mon 6/10	Tue 6/11	Wed 6/12	Thu 6/13	Fri 6/14	Sat 6/15	Sun 6/16	Mon 6/17	Tue 6/18	Wed 6/19	Thu 6/20	Fri 6/21	Sat 6/22	Sun 6/23	Mon 6/24	Tue 6/25	Wed 6/26	Thu 6/27	Fri 6/28	Sat 6/29	Sun 6/30	Time	

Daily Runway Use (SDF)

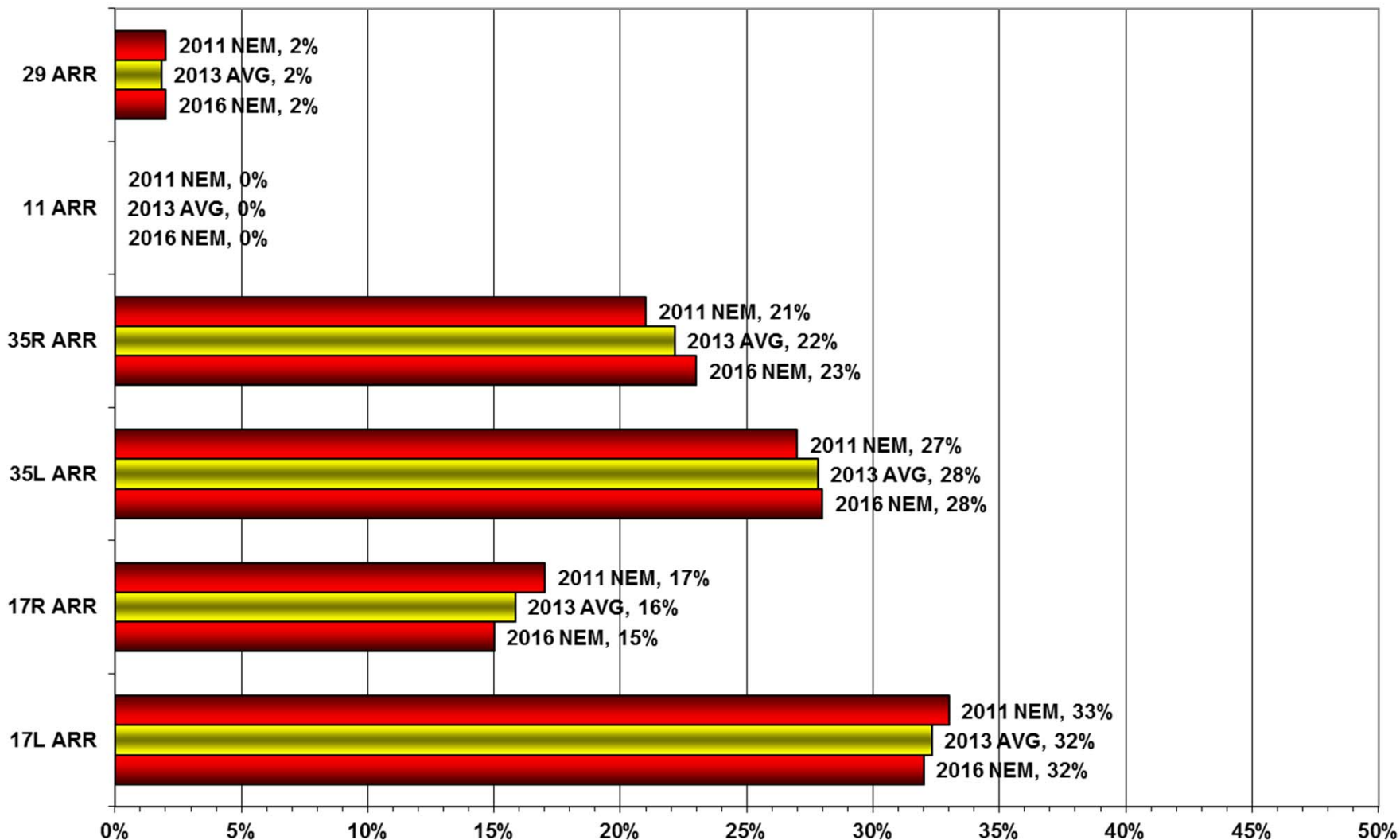
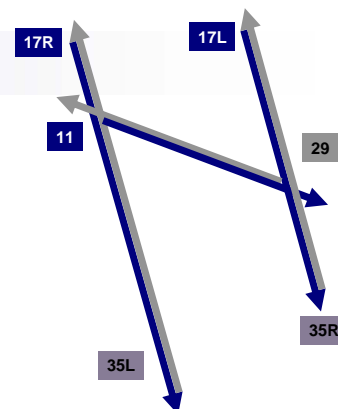
Tower Comments June 2013

Day	Date	Time	Comment
sat	1-Jun-13		
sun	2-Jun-13		
mon	3-Jun-13	1300-1630	Wind 3608
tue	4-Jun-13		
wed	5-Jun-13	1300-1430	Reason not documented
thu	6-Jun-13		
fri	7-Jun-13	1300-1330	Wind 0211
fri	7-Jun-13	1900-2200	Wind 0110
sat	8-Jun-13		
sun	9-Jun-13		
mon	10-Jun-13	0930-1200	Wind 2310, weather & wet runways
tue	11-Jun-13	1030-1300	TWY and RWY closures, taxi routes.
wed	12-Jun-13		
thu	13-Jun-13		
fri	14-Jun-13	0300-0630	Wind 3609, went south @ 0522
fri	14-Jun-13	1600-2130	Wind 0211
sat	15-Jun-13		
sun	16-Jun-13		
mon	17-Jun-13		
tue	18-Jun-13		
wed	19-Jun-13		
thu	20-Jun-13		
fri	21-Jun-13		
sat	22-Jun-13		
sun	23-Jun-13	1930-2000	Wind 0211
mon	24-Jun-13		
tue	25-Jun-13		
wed	26-Jun-13		
thu	27-Jun-13	2100-2200	Wind forecast 3111
fri	28-Jun-13	0700-0930	Wind 3224 short final
sat	29-Jun-13	1600-1730	Wind 3112G24, wind shear
sun	30-Jun-13	2300-2400	Wind 3608

Runway Use (SDF)

Arrivals As of June 30, 2013

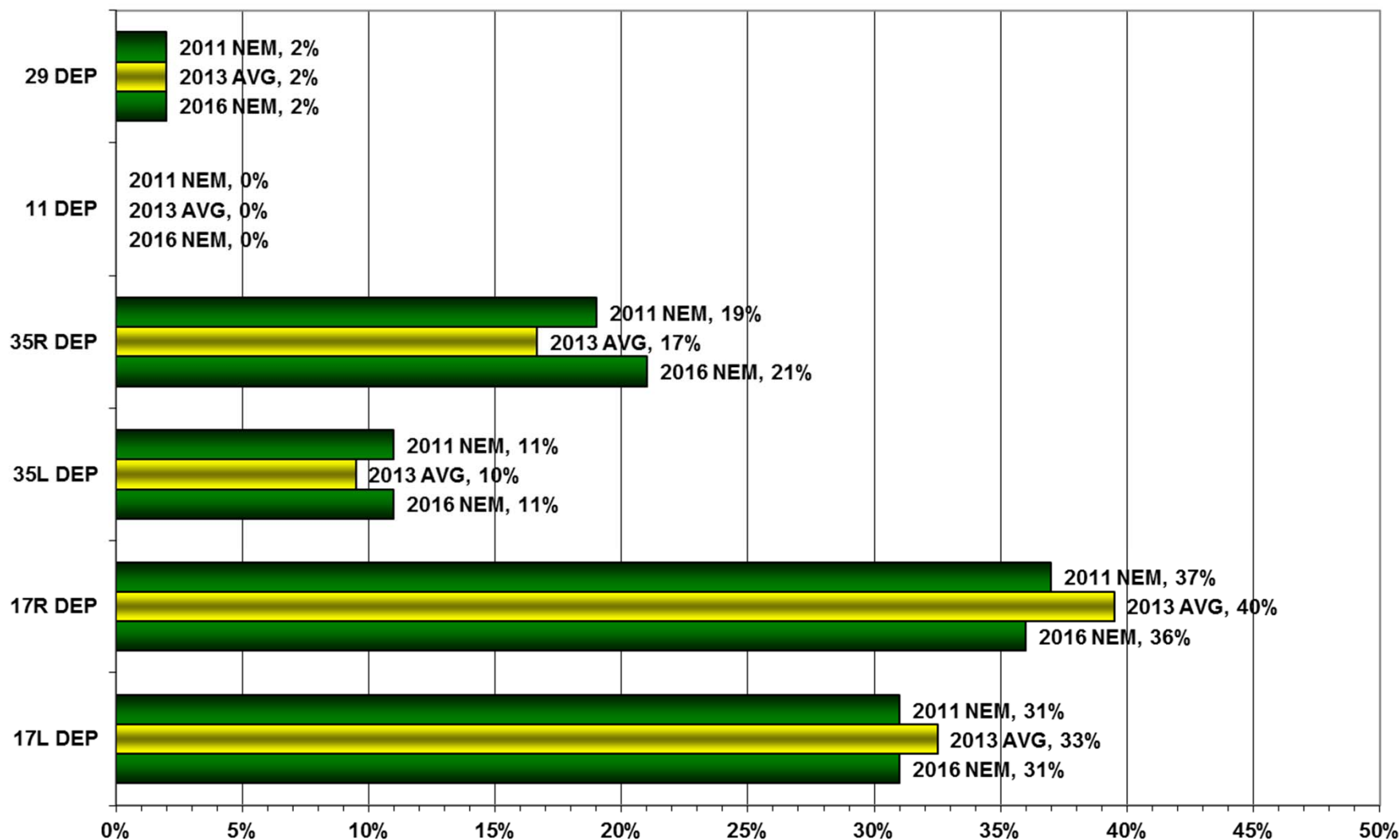
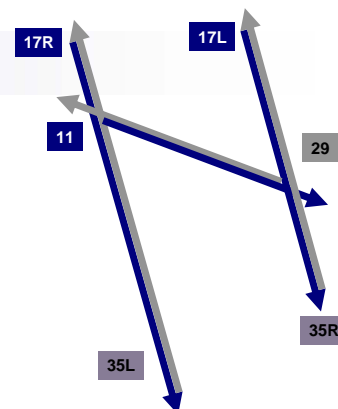
NEM vs. Actual

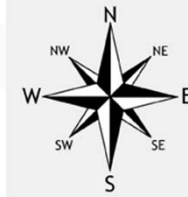


Runway Use (SDF)

Departures As of June 30, 2013

NEM vs. Actual



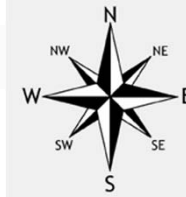


Runway Use 0930L-1230L_(SDF)

As of June 2013

	Arrival Percentage by Runway								Departure Percentage by Runway							
	11	17L	17R	29	35L	35R	% From South	Arrival Count	11	17L	17R	29	35L	35R	% To North	Departure Count
May-11	0	34	19	1	25	21	46		0	30	22	2	4	42	46	
Jun-11	0	21	22	0	37	22	59		0	20	15	2	14	49	63	
Jul-11	0	25	13	0	38	24	62		0	23	13	0	18	46	64	
Aug-11	0	14	13	0	31	41	72		0	13	11	1	17	58	75	
Sep-11	0	16	23	0	33	28	61		0	15	22	1	7	55	62	
Oct-11	0	13	13	5	33	36	69		0	12	11	5	18	54	72	
Nov-11	0	32	21	0	25	22	47		0	35	18	0	4	43	47	
Dec-11	0	21	17	2	42	18	60		0	20	15	3	17	45	62	
Jan-12	0	27	24	9	29	11	40	653	1	33	17	14	14	21	35	306
Feb-12	0	9	18	8	35	30	65	662	0	11	16	10	10	53	63	345
Mar-12	0	30	38	0	15	17	32	684	0	29	36	2	0	33	33	404
Apr-12	0	15	10	1	43	31	74	589	0	13	10	5	17	55	72	336
May-12	0	27	22	0	29	21	50	745	0	25	25	0	15	34	49	449
Jun-12	0	11	16	4	46	26	72	652	0	12	14	4	19	52	71	427
Jul-12	0	6	32	0	49	13	62	619	0	8	27	3	45	17	62	384
Aug-12	0	26	23	0	34	17	51	717	0	24	26	1	21	28	49	437
Sep-12	0	29	10	0	21	40	61	655	0	33	10	1	13	43	56	353
Oct-12	1	20	26	3	20	31	51	740	2	24	19	3	9	43	52	475
Nov-12	0	10	4	3	50	33	83	762	0	7	4	3	9		9	
Dec-12	0	18	12	5	41	24	65	779	0	17	9	3	8	63	71	412
Jan-13	0	16	12	0	42	30	72	742	0	17	16	2	14	52	66	436
Feb-13	0	21	11	9	39	2	41	628	0	21	16	7	12	44	56	354
Mar-13	0	10	6	0	51	33	84	728	0	10	8	3	14	65	79	441
Apr-13	0	24	27	2	27	20	47	719	0	26	23	3	8	40	48	441
May-13	0	33	33	0	20	14	34	785	0	33	31	1	10	25	35	410
Jun-13	0	10	13	0	43	31	74	717	0	8	13	0	22	57	79	534
Monthly Avg.	0	20	18	2	35	24	59		0	20	17	3	14	45	58	

Source: Louisville International Airport
Aircraft Flight Tracking and Noise Management System (AFTNMS)



Gate Compliance by Runway

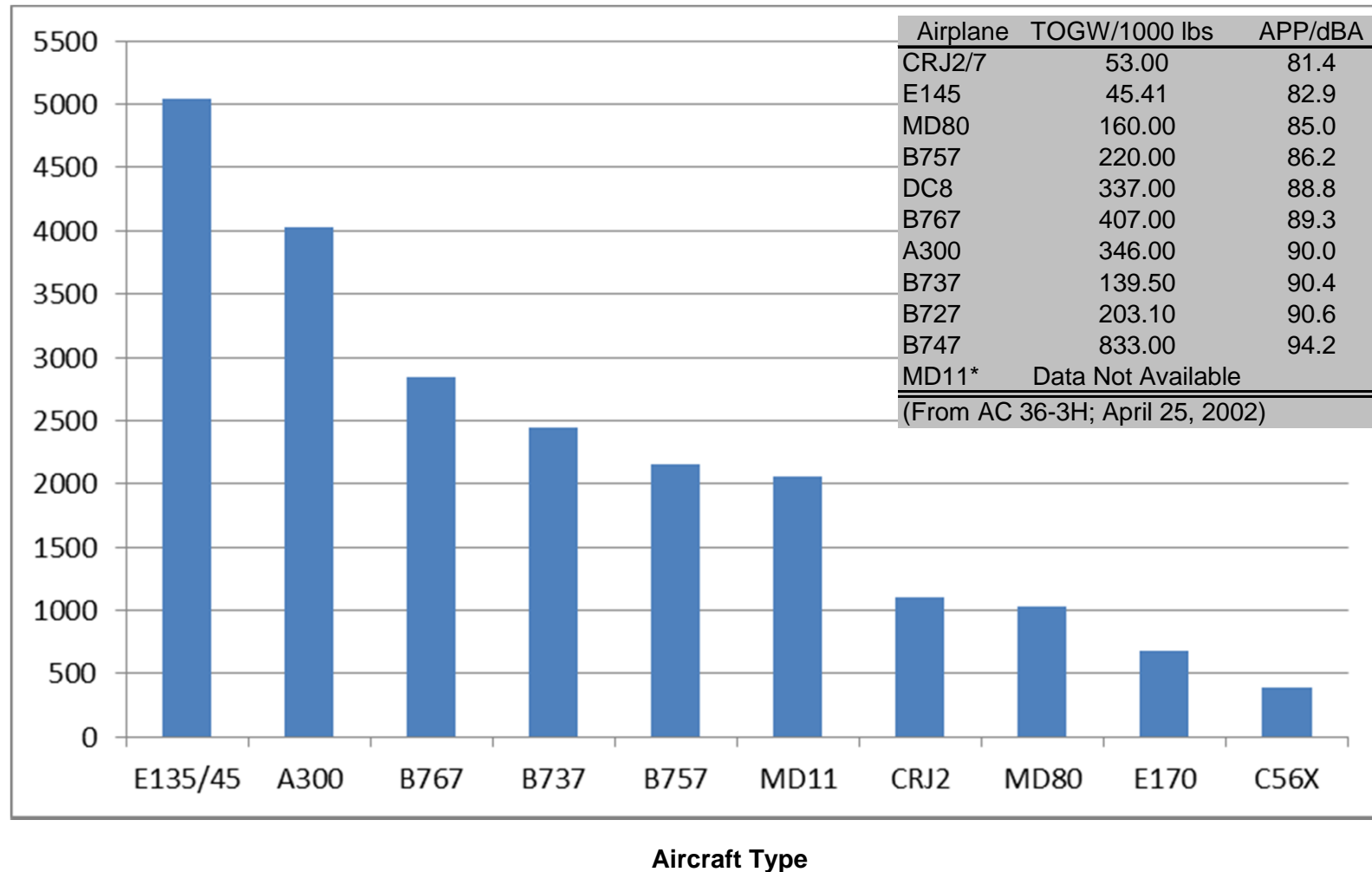
As of June 30, 2013

	ARRIVALS Percent Compliant					Departure Percent Compliant				
Month	17L	17R	35L	35R	ARR AVG	17L	17R	35L	35R	DEP AVG
Jul-11	79%	86%	75%	83%	81%	72%	76%	86%	92%	82%
Aug-11	73%	84%	58%	75%	73%	65%	77%	78%	92%	78%
Sep-11	76%	84%	66%	81%	77%	66%	75%	72%	79%	73%
Oct-11	67%	84%	76%	78%	76%	64%	76%	82%	80%	76%
Nov-11	80%	90%	82%	89%	85%	49%	67%	76%	79%	68%
Dec-11	77%	94%	86%	87%	86%	51%	70%	79%	84%	71%
Jan-12	78%	87%	83%	88%	84%	44%	68%	72%	76%	65%
Feb-12	73%	91%	78%	77%	80%	50%	68%	74%	79%	68%
Mar-12	76%	88%	76%	81%	80%	48%	68%	67%	80%	66%
Apr-12	65%	80%	72%	73%	73%	63%	72%	79%	85%	75%
May-12	71%	86%	75%	77%	77%	67%	80%	78%	87%	78%
Jun-12	61%	81%	71%	73%	72%	63%	75%	78%	90%	77%
Jul-12	66%	83%	70%	76%	74%	62%	72%	77%	89%	75%
Aug-12	68%	85%	75%	77%	76%	63%	71%	83%	90%	77%
Sep-12	79%	93%	81%	78%	83%	53%	72%	72%	88%	71%
Oct-12	80%	92%	85%	82%	85%	70%	59%	70%	89%	72%
Nov-12	73%	73%	82%	85%	78%	84%	82%	84%	92%	86%
Dec-12	84%	93%	89%	91%	89%	74%	85%	72%	79%	78%
Jan-13	82%	93%	82%	83%	85%	73%	86%	81%	87%	82%
Feb-13	78%	93%	85%	84%	85%	73%	85%	76%	78%	78%
Mar-13	73%	86%	88%	86%	83%	82%	89%	82%	86%	85%
Apr-13	75%	90%	77%	78%	80%	73%	89%	80%	81%	81%
May-13	81%	87%	78%	77%	81%	70%	84%	76%	92%	81%
Jun-13	73%	84%	76%	82%	79%	76%	88%	74%	86%	81%
24 Month Avg.					80%					76%

Source: Louisville International Airport
Aircraft Flight Tracking and Noise Management System (AFTNMS)

Operations by Aircraft Type (SDF) Only Top 10 Aircraft Types Shown

May/June 2013



Source: Louisville International Airport

Aircraft Flight Tracking and Noise Management System (AFTNMS)



P R E S S R E L E A S E

FOR IMMEDIATE RELEASE

Contact:

Kim Domerofski, Port of Oakland
(510) 563-2892
kdomerofski@portoakland.com

Stay Connected with the Port of Oakland

Your Port, Your Partner.

www.oaklandairport.com

www.portofoakland.com



Five Aviation Companies to Receive OAK Fly Quiet Awards for Outstanding Compliance with Noise Abatement Procedures

Banquet Honoring Winners to be Held on July 17th, 2013

Oakland, Calif. (July 15, 2013) – Five aviation companies will receive Fly Quiet Awards for achieving outstanding compliance with the Oakland International Airport's Fly Quiet Noise Abatement Program for calendar year 2012. This year's inaugural winners of the Fly Quiet Awards will be recognized by the OAK Airport – Community Noise Management Forum at the Inaugural Awards Banquet to be held at the Jack London Aquatic Center on July 17th.

Oakland International Airport is committed to being a good neighbor and continues to encourage operators to comply with voluntary noise abatement procedures. The OAK Noise Forum was established in 1998 to address community concerns regarding aircraft noise in neighboring areas. Since then, the Noise Forum has developed and implemented noise abatement procedures that benefit local communities.

The OAK Noise Forum created the Fly Quiet Program to award and recognize those operators who comply with all noise abatement policies and procedures and achieve the highest level of compliance. "We are proud of this year's award recipients," said Michael McClintock, OAK Noise Forum Facilitator. "The Fly Quiet Program encourages aviation businesses to be responsible neighbors."

The Fly Quiet award winners for 2012 are:

Airline Award – Southwest Airlines

Occupying twelve gates in Terminal 2 and employing over 2,200 employees at OAK, Southwest Airlines is the dominant air carrier serving OAK with more than 100 daily nonstop flights to 18 cities. Southwest Airlines has been an active participant in the Port's aircraft noise abatement activities for many years.

Commercial Business Jet Award – NetJets Aviation

NetJets, Inc. is the worldwide leader in private aviation with the largest and most diverse private jet fleet in the world. NetJets began in 1964 as the first aircraft charter and management company and pioneered the concept of fractional aircraft ownership – offering individuals and businesses all of the benefits of whole aircraft ownership. The North America program is managed and operated by NetJets' subsidiary NetJets Aviation, Inc. NetJets offers aircraft management and charter services through its subsidiary, Executive Jet Management, Inc..

Private Business Jet Award – Chevron Corporation

Chevron's Aviation Services flight department operates a fleet of aircraft that provides global transportation service for Chevron executives and employees out of its own hangar on the North Field at OAK. Chevron employs approximately 58,000 people worldwide. Through 2010, Aviation Services had flown 101,161 hours of accident-free flight operations. Chevron Aviation Services has an exemplary safety record and achieved phase I certification in IS-BAO. IS-BAO certification is a major industry honor that reflects Chevron's Aviation Services' quest for keeping safety at the forefront of their world-class flight department.

North Field Cargo/Charter Award – West Air Inc.

West Air Inc., headquartered in Las Vegas with offices and associated companies in Fresno, provides cargo feeder services to major worldwide courier companies. West Air is successfully managed by a team of dedicated professionals with extensive experience in cargo and passenger airline operations, providing the necessary leadership qualities to secure steady growth and profitability in ever changing markets. The Company's fleet presently consists of 35 Cessna Grand Caravan 208B aircraft that are operated in California, Nevada and Utah. Their "hub" cities are Sacramento, Oakland, Ontario, San Diego and Las Vegas. West Air maintains its aircraft at its own maintenance base in Fresno, California.

General Aviation Award – Oakland Flyers

Founded in 1989, Oakland Flyers is a flying club and training facility. As a flying club, they offer a well-maintained fleet of Piper, Cessna, and Bellanca aircraft for rent, as well as a Frasca 142 Flight Simulator. Club members also participate in fly-ins and member gatherings organized by the Club. As a training facility, Oakland Flyers offer professional flight training in accordance with Part 61 of the Federal Aviation Regulations. All flight instructors are independent high flight time

professionals who work to provide the highest quality training. Oakland Flyers has a loyal customer base of approximately 400 members as well as an excellent reputation in the San Francisco Bay Area with aviation authorities and other aviation businesses. Its outstanding safety record reflects the quality of flight instruction as well as a high priority on maintenance standards.

About the Port of Oakland:

The Port of Oakland oversees the Oakland seaport and Oakland International Airport. The Port's jurisdiction includes 20 miles of waterfront from the Bay Bridge through Oakland International Airport. The Oakland seaport is the fifth busiest container port in the U.S.; Oakland International Airport is the second largest San Francisco Bay Area airport offering over 300 daily passenger and cargo flights; and the Port's real estate includes commercial developments such as Jack London Square and hundreds of acres of public parks and conservation areas. Together, through Port operations and those of its tenants and users, the Port supports more than 73,000 jobs in the region and nearly 827,000 jobs across the United States. The Port of Oakland was established in 1927 and is an independent department of the City of Oakland. Connect with the [Port of Oakland](#) and [Oakland International Airport](#) through Facebook, or with the Port on Twitter, YouTube, and at www.portofoakland.com.

###



Questions?
[Contact Us](#)

STAY CONNECTED:



SUBSCRIBER SERVICES: [Manage Preferences](#) | [Unsubscribe](#) | [Help](#)

This email was sent to newseditor@aci-na.org, on behalf of Port of Oakland · 530 Water Street · Oakland, CA 94607 · 510-627-1100