

**Community Noise Forum**  
**Monday, July 28, 2014**  
**Agenda**

- I. Call to order: 6:00PM
- II. Minutes of March 24, 2014
- III. Minutes of June 9, 2014
- IV. Part 150 NCP
  - A. Update: Noise Insulation Program
  - B. Contraflow Exceptions
- V. Current Noise Concerns
  - A. Noise Concerns/Complaints
  - B. Runway Utilization
  - C. Construction and Maintenance Activity
- VI. Announcements
- VII. Guest Comments
- VIII.. Next Meeting: Monday, September 28, 2014
- IX. Adjournment:

**COMMUNITY NOISE FORUM (CNF)**  
**Monday, March 24, 2014**

**Members**

John Sistarenik, ANA  
Pete Levermore, Airline Affairs  
Bob Slattery, LRAA  
Mary Rose Evans, LRAA Board  
Brian Sinnwell, LRAA  
Ken Dietz, UofL

Verna Goatley, Metro  
Mike Zanone, Northwest  
Chris Younkin, FAA  
Jason Schmidt, KYANG  
Pat Gould, Northeast  
John Greathouse, Southwest

**Guests**

Dorn Crawford, Audubon Pkwy.  
Shane Smith, SACC  
Nydia Regnier, Schnitzelberg  
Joe Billy, Southgate

The meeting was called to order at 6:00 p.m. by John Sistarenik. The CNF operated as a committee of the whole in January, therefore the November meeting minutes were reviewed and approved. The January minutes were also approved at this time.

John introduced Chris Younkin with the FAA as the newest member of the CNF.

Election of officers for Chair and Vice Chair were held. John Sistarenik was re-elected as Chair with a nomination from Mike Zanone and seconded by Pete Levermore. Pete Levermore was re-elected as Vice Chair with a nomination from Mary Rose Evans and seconded by Verna Goatley. John and Pete will serve as Chair and Vice-Chair, respectively, for one year.

**Part 150 NCP:**

**A. Updates:**

**Phase 3A-1:** Sound insulation for 22 families. Construction began on January 6<sup>th</sup> and the contractor is substantially complete.

**Phase 4A:** Sound insulation for 50 families was awarded at the November board meeting. Final measurements were completed in January. Construction is anticipated to occur in the spring.

**Phase 5:** A contract to provide Sound Insulation for 85 families was awarded at the January board meeting.

**Phase 4B:** Sound insulation for 71 families was awarded at the February board meeting.

**Phase 6:** Sound Insulation for 60 families. The project was advertised on March 9<sup>th</sup>. Phase 6 is anticipated to be awarded at the April Board meeting.

To date, 179 families have received sound insulation.

- B. Contraflow Exceptions:** Contraflow for January, 51% for arrivals from the south and 81% for departures to the south. In February, arrivals from the south were 72% and departures to the south were 71%. For CY-2014 the arrivals are averaging 61% and the departures are averaging 76%. A daily summary for January and February 2014 is contained in the handout. A monthly summary going back 8 years is also included in the handout.

#### **Current Noise Concerns:**

- A. Report on Noise Concerns/Complaints:** We received a total of 17 comments in January, 6 were comments received at the QHP project office and 11 were received by the LRAA. In February we received a total of 30 comments, 8 were received at the QHP project office and 22 were received by the LRAA.
- B. Runway Utilization:** Runway utilization percentages for January and February are contained in the handout. Daily runway utilization and comments from the Air Traffic Control Tower for January and February are also included in the handout.
- C. Construction and Maintenance Activity:** Brian Sinnwell reported that the Taxiway “A” project is coming up this spring and will start after Derby. At certain times during the construction period, TW “A” will be closed during the months of June, July & August during daytime hours.

**Announcements:** Mike Zanone asked about a public meeting regarding Runway 11/29. Brian Sinnwell explained that the meeting is being held on April 3<sup>rd</sup> regarding an EMASS bed which is going to be installed to prevent aircraft from running off the runway.

**Guest Comments:** Shane Smith wanted to know if the QHP will be responsible if the home becomes noisy again after being sound insulated. Bob Slattery told him there is a warranty period, but after that, the homeowner is responsible for the upkeep of their home. Shane wanted to know if any thought had been given to prorating homes in lower noise level areas such as 64 or 63 DNL. Bob explained that the cutoff was DNL 65 and the only thing similar he was aware of is the proposed legislation to give tax credits for homeowners in the 60-65 DNL contour that install sound insulation on their own.

Joe Billy lives in the Southgate neighborhood and wants to know why they are not included in the QHP. Bob invited him to stay after the meeting to discuss.

Nydia Regnier discussed her visual of the noise contours and how it relates to the Schnitzelburg neighborhood. She pointed out that her neighborhood is only 10,000 feet

from the end of the runway and they get the brunt of the noise from exceptions to contraflow. She has not slept in 10 nights and the noise is making her and her neighbors sick. Since the FAA will not do anything about it the LRAA should because it is their community.

**Next Meeting:** Monday, June 2, 2014 at 6 p.m.

**Adjournment:** A motion was made to adjourn the meeting at 7:07 PM by Pete Levermore and was seconded by John Greathouse.

**COMMUNITY NOISE FORUM (CNF)**  
**Monday, June 9, 2014**

**Members**

John Sistarenik, ANA  
Denny Thompson, Southeast  
Bob Slattery, LRAA

Verna Goatley, Metro  
Jason Schmidt, KYANG  
Pat Gould, Northeast

**Guests**

Shane Smith, SACC

The meeting was called to order at 6:00 p.m. by John Sistarenik. The CNF operated as a committee of the whole in June. Whatever decisions are made would have to be confirmed at the July meeting. The March meeting minutes were reviewed and will be approved at the July meeting.

The reason the meeting was postponed from June 2<sup>nd</sup> was because Bob and John were participants in the National Aviation Environmental Management conference. Bob gave a brief synopsis of the sessions. They were: Regulatory Roundup, Sustainability, Aviation Noise, Aviation Environmental Design Tool (AEDT), Construction Emissions, Climate Adaptation, Local Permitting and Development Requirements for Post Construction Stormwater Management, and Energy and Alternative Fuels.

In 2014, AEDT2b will become the next generation aviation environmental consequence tool, replacing current public-use aviation air quality and noise analysis tools such as the Integrated Noise Model (INM – single airport noise analysis) and the Emissions and Dispersion Modeling System (EDMS – single airport emissions analysis).

AEDT is a software system that dynamically models aircraft performance in space and time to produce fuel burn, emissions and noise. Full flight gate-to-gate analyses are possible for study sizes ranging from a single flight at an airport to scenarios at the regional, national, and global levels. AEDT is currently used by the US Government to consider the interdependencies between aircraft-related fuel burn, noise, and emissions. John pointed out that the most noise friendly procedure may not be the most fuel efficient procedure. A potential issue that could arise from this model is the possible favoring of procedure that is more emissions friendly over a more noise friendly procedure or vice versa.

**Part 150 NCP:**

**A. Updates:**

**Phase 3A-1:** Sound insulation for 22 families. Construction began on January 6<sup>th</sup> and the phase is complete.

**Phase 4A:** Sound insulation for 50 families was awarded at the November board meeting. Final measurements were completed in January. Construction is underway.

**Phase 5:** A contract to provide Sound Insulation for 85 families was awarded at the January board meeting. Measurement walk-throughs were completed in May. Construction will begin later this summer.

**Phase 4B:** Sound insulation for 71 families was awarded at the February board meeting. Measurement walk-throughs are complete. Construction begins in the fall.

**Phase 6:** Sound Insulation for 60 families. The project was advertised on March 9<sup>th</sup>. Phase 6 was awarded at the April Board meeting. Construction should begin by the end of the year.

**Phase 7:** Sound Insulation for 66 families. The project advertised on May 4<sup>th</sup>. It is anticipated to be awarded at the June board meeting.

**Phase 3B:** Awaiting easement resolution.

To date, 179 families have received sound insulation.

- B. Contraflow Exceptions:** Contraflow for March, 60% for arrivals from the south and 77% for departures to the south. In April, arrivals from the south were 67% and departures to the south were 83%. For CY-2014 the arrivals are averaging 63% and the departures are averaging 79%. A daily summary for March and April 2014 is contained in the handout. A monthly summary going back 8 years is also included in the handout.

#### **Current Noise Concerns:**

- A. Report on Noise Concerns/Complaints:** We received a total of 27 comments in March. The QHP project office received 3 and 24 were received by the LRAA. In April we received a total of 18 comments, 5 were received at the QHP project office and 13 were received by the LRAA.
- B. Runway Utilization:** Runway utilization percentages for March and April are contained in the handout. Daily runway utilization and comments from the Air Traffic Control Tower for March and April are also included in the handout.
- C. Construction and Maintenance Activity:** Taxiway “A” Bid Package 5 is underway on the west side of the airport and will be under construction until November 1<sup>st</sup> of this year. This project will have impacts on the west runway and the crosswind runway. The 2014 Pavement Rehab project is anticipated to begin in late July and will be finished in the latter part of October. The Pavement Rehab

project mostly impacts the west runway but there will be some asphalt shoulder work that will impact the east runway.

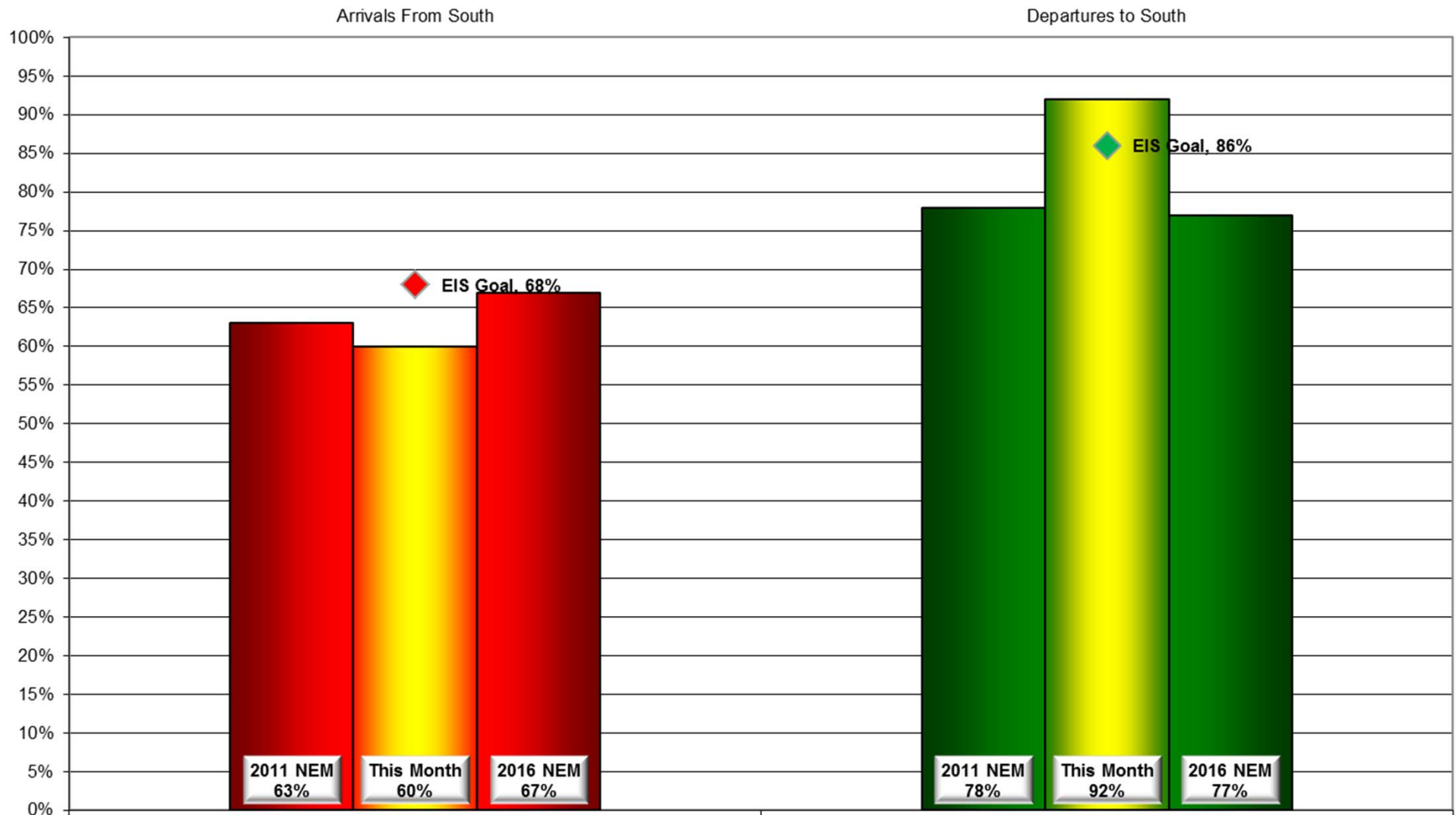
**Announcements:** Bob let everyone know that Mary Rose Evans thanked the CNF for the flowers sent to her.

**Guest Comments:** Shane Smith wanted to know if occurrences are caught whether or not there has been a complaint from someone. Bob let him know that the runway use is checked on a daily basis and we know the times when the airport is not in the correct flow even if there are no complaints.

**Next Meeting:** Monday, July 28, 2014 at 6 p.m.

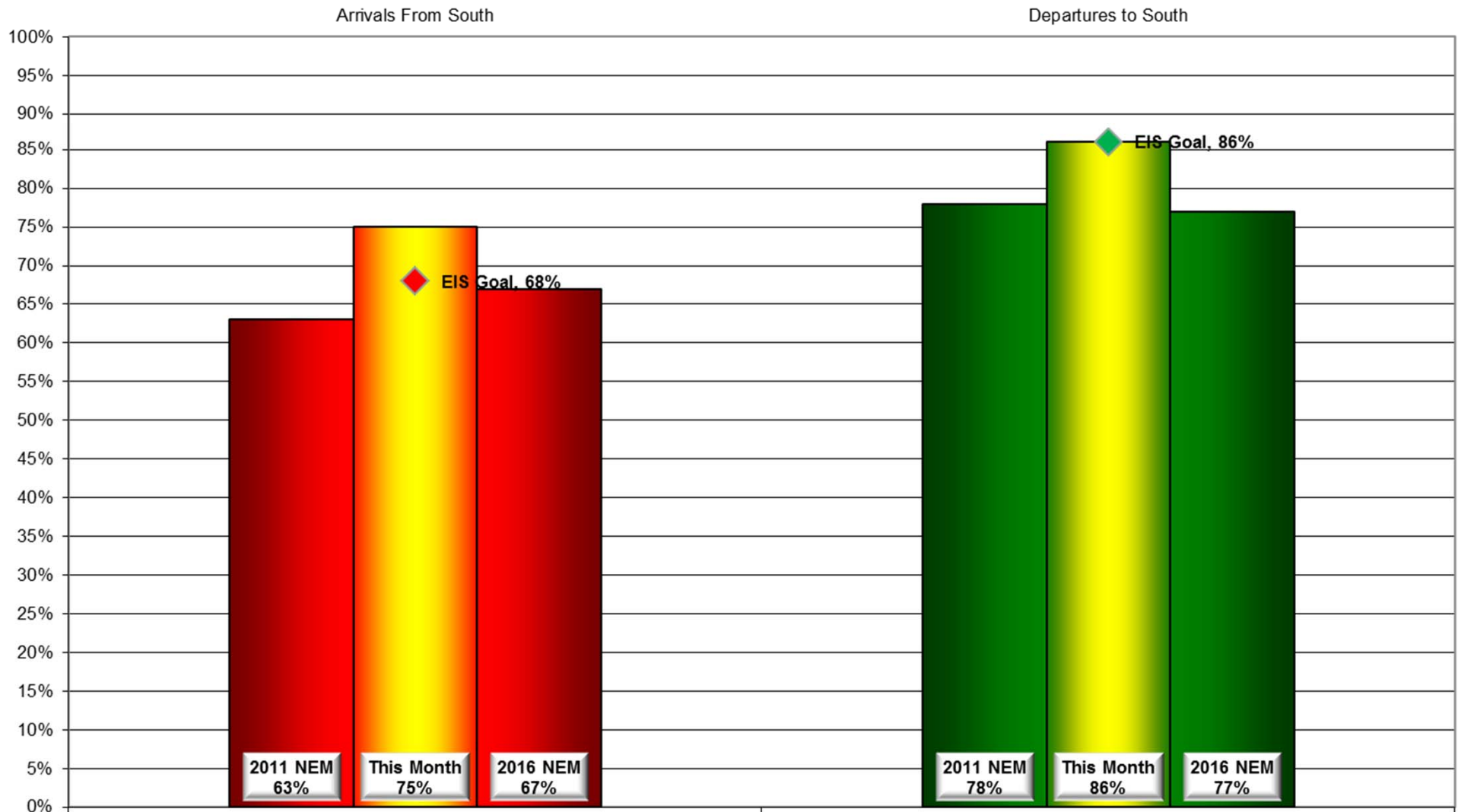
**Adjournment:** A motion was made to adjourn the meeting at 6:40 PM by Verna Goately. The motion was seconded by Denny Thompson.

## Monthly Contraflow May 1-30, 2014

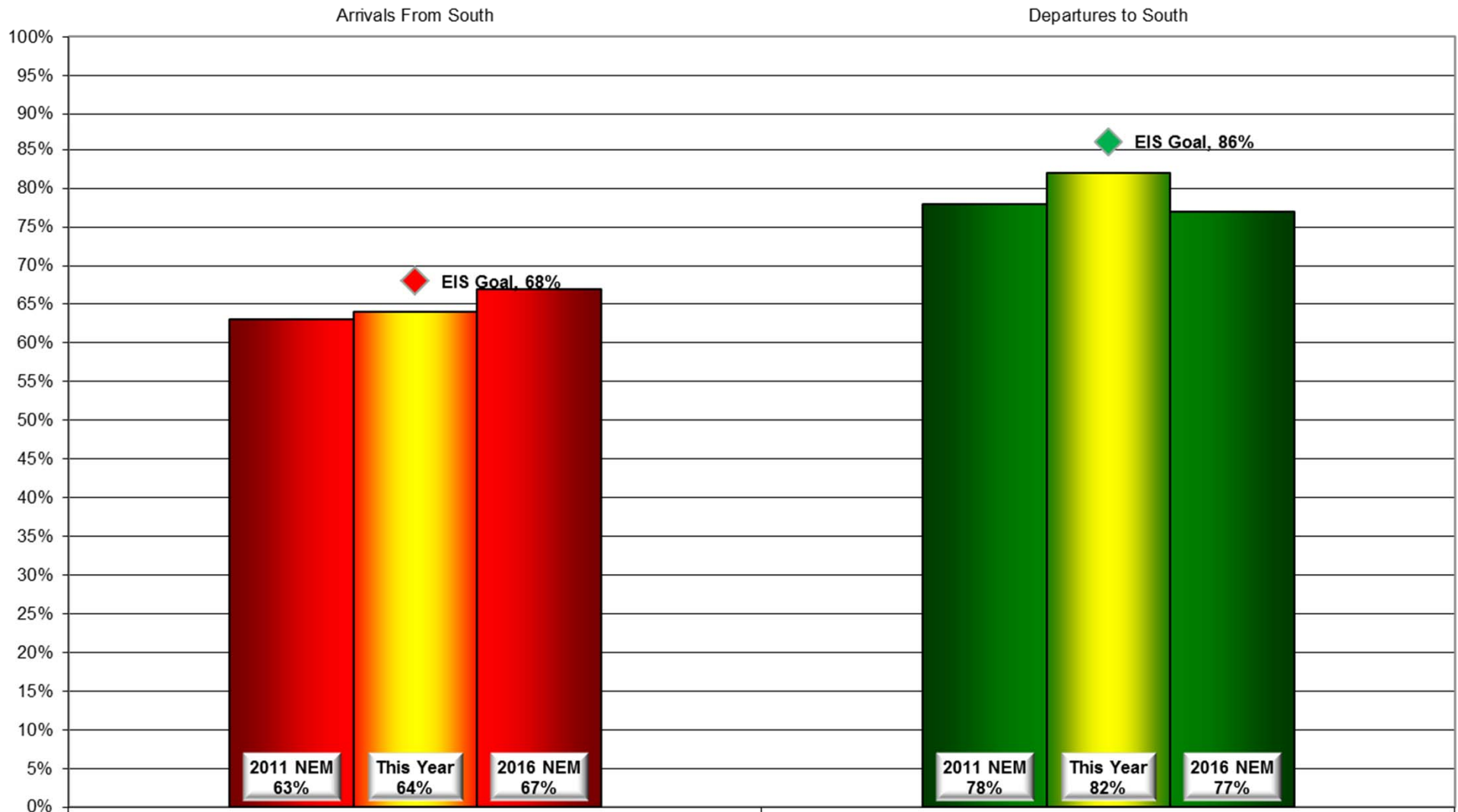




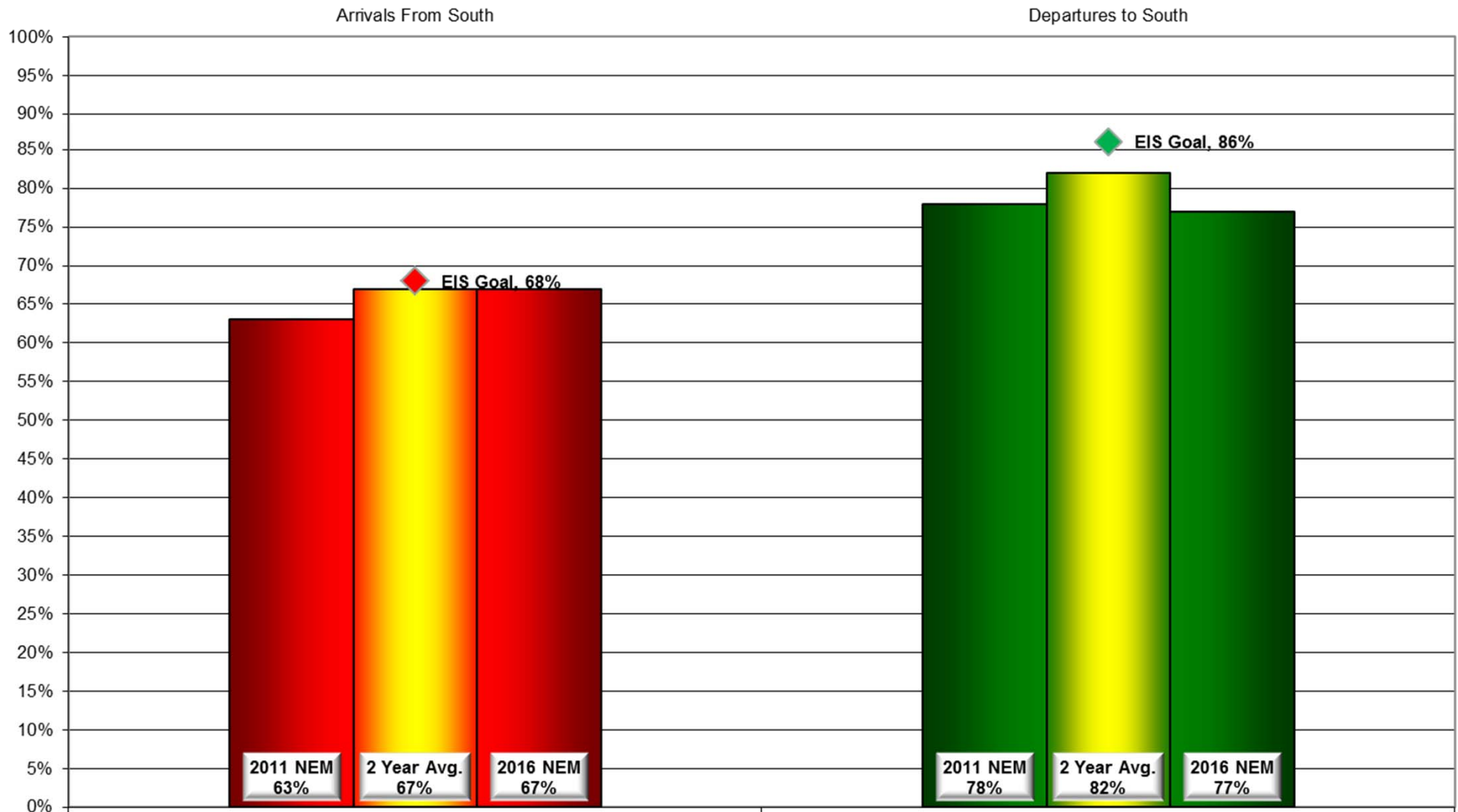
## Monthly Contraflow June 1-30, 2014



## Contraflow This Year As of July 4, 2014



## Contraflow 2 Year Average July 2012 - June 2014



# Year-to-Year by Month Percent\* Contraflow

Arrivals From the South (Goal 68%)										Departures to the South (Goal 86%)									
	2007	2008	2009	2010	2011	2012	2013	2014	Avg		2007	2008	2009	2010	2011	2012	2013	2014	Avg
Jan	39%	50%	63%	94%	91%	62%	72%	51%	65%	Jan	80%	80%	74%	54%	71%	80%	65%	81%	73%
Feb	77%	50%	49%	90%	73%	69%	77%	72%	70%	Feb	76%	74%	81%	71%	63%	74%	78%	71%	74%
Mar	52%	52%	46%	80%	52%	61%	87%	60%	61%	Mar	78%	68%	67%	82%	72%	96%	77%	77%	77%
Apr	61%	44%	53%	57%	47%	78%	60%	67%	58%	Apr	67%	92%	84%	84%	83%	76%	89%	83%	82%
May	71%	66%	66%	56%	69%	72%	46%	60%	63%	May	84%	78%	84%	87%	85%	81%	85%	92%	85%
Jun	64%	38%	72%	66%	61%	79%	76%	75%	66%	Jun	85%	93%	81%	96%	93%	87%	80%	86%	88%
Jul	84%	75%	72%	61%	91%	62%	74%		74%	Jul	85%	84%	82%	90%	88%	92%	88%		87%
Aug	69%	92%	61%	59%	82%	49%	84%		71%	Aug	87%	77%	96%	92%	91%	91%	92%		89%
Sep	79%	91%	89%	70%	85%	55%	86%		79%	Sep	89%	73%	82%	73%	64%	92%	87%		80%
Oct	54%	76%	42%	80%	88%	62%	87%		70%	Oct	68%	77%	71%	78%	63%	78%	89%		75%
Nov	58%	66%	74%	85%	55%	84%	73%		71%	Nov	77%	74%	73%	77%	72%	81%	83%		77%
Dec	53%	58%	71%	67%	70%	64%	58%		63%	Dec	74%	62%	65%	78%	65%	67%	71%		69%
Avg	63%	63%	63%	72%	72%	66%	73%	64%		Avg	79%	78%	78%	80%	76%	83%	82%	82%	

\*Number is percentage of all operations between 10:00 PM - 7:00 AM

# Daily Runway Use Summary- May 2014

(from 10:00 PM date list in first column to 7:00 AM the following morning)

		% of all arrivals from the south										% of all departures to the south									
Date	Day	* in compliance	Runway #						Unknown Runway Use	Notes / Comments		** in compliance	Runway #						Unknown Runway Use	Notes / Comments	
			11	17L	17R	29	35L	35R					11	17L	17R	29	35L	35R			
05/01/14	Thu	98%			2			58	40	0		91%			33	58		4	5	0	
05/02/14	Fri	95%			2	3		60	35	0		96%			41	55		1	3	0	
05/03/14	Sat																				
05/04/14	Sun																				
05/05/14	Mon	82%			8	10		47	35	0		95%			36	59		4	1	0	
05/06/14	Tue	88%			8	4		49	39	0		97%			34	63		2	1	0	
05/07/14	Wed	0%			44	56				0	180-200@6-8knts	100%			42	58				0	
05/08/14	Thu	0%			48	52				0	170-190@7-10knts	100%			35	65				0	
05/09/14	Fri	0%			48	52				0	190-260@7-13knts,RA	100%			33	67				0	
05/10/14	Sat																				
05/11/14	Sun																				
05/12/14	Mon	0%			46	54				0	150-210@3-8knts	100%			40	60				0	
05/13/14	Tue	98%					2	57	41	0		0%					54	46	0	360-010@6-10knts	
05/14/14	Wed	0%			51	49				0	150-240@9-13knts,G18,RA	100%			42	58				0	
05/15/14	Thu	95%			3	2		52	43	0		93%			36	57		4	3	0	
05/16/14	Fri	98%			1	1		61	37	0		93%			35	58		1	6	0	
05/17/14	Sat																				
05/18/14	Sun																				
05/19/14	Mon	0%			39	61				0	130-150@5-8knts	100%			37	63				0	
05/20/14	Tue	0%			42	58				0	180-200@4-7knts	100%			40	60				0	
05/21/14	Wed	13%			40	47		10	3	0	060-220@7-13knts,TSRA	92%			41	51		5	3	0	
05/22/14	Thu	99%			1			59	40	0		89%			37	52		6	5	0	
05/23/14	Fri	95%			3	2		61	34	0		97%			41	56		1	2	0	
05/24/14	Sat																				
05/25/14	Sun																				
05/26/14	Mon	87%			4	7	2	60	27	0		99%			39	60			1	0	
05/27/14	Tue	96%			4			58	38	0		89%			30	59		6	5	0	
05/28/14	Wed	97%			2	1		59	38	0		94%			38	56		3	3	0	
05/29/14	Thu	96%			2	2		62	34	0		94%			37	57		3	3	0	
05/30/14	Fri	88%			7	5		52	36	0		96%			38	58		1	3	0	

Preferred Flow

DATIS Reported Conditions Indicate  
Support for Non-Preferred Flow

DATIS Reported Conditions Do Not Indicate  
Support for Non-Preferred Flow

# Daily Runway Use Summary- June 2014

(from 10:00 PM date list in first column to 7:00 AM the following morning)

		% of all arrivals from the south										% of all departures to the south											
Date	Day	* in	Runway #						Unknown	Notes /		** in	Runway #						Unknown	Notes /			
		compliance	11	17L	17R	29	35L	35R	Runway				Use	compliance	11	17L	17R	29	35L			35R	Runway
06/02/14	Mon	0%			43	57					0	190-230@5-16knts,G23,RA	100%			42	58					0	
06/03/14	Tue	95%			5				59	36	0		92%			33	59			3	5	0	
06/04/14	Wed	100%							57	43	0		0%							57	43	0	360-040@7-14,G16
06/05/14	Thu	97%			1	2			60	37	0		99%			38	61			1		0	
06/06/14	Fri	98%			2				60	38	0		0%							17	83	0	070-080@3knts
06/07/14	Sat																						
06/08/14	Sun																						
06/09/14	Mon	98%			1	1			53	45	0		91%			40	51			8	1	0	
06/10/14	Tue	0%			55	45					0	140-150@7-9knts	100%			39	61					0	
06/11/14	Wed	93%			5	2			52	41	0		88%			40	48			4	8	0	
06/12/14	Thu	97%			2	1			53	44	0		88%			27	61			2	10	0	
06/13/14	Fri	96%				4			56	40	0		96%			38	58			2	2	0	
06/14/14	Sat																						
06/15/14	Sun																						
06/16/14	Mon	92%			6	2			57	35	0		97%			35	62			2	1	0	
06/17/14	Tue	91%			7	2			52	39	0		96%			38	58			2	2	0	
06/18/14	Wed	96%			4				56	40	0		94%			41	53			1	5	0	
06/19/14	Thu	98%			2				57	41	0		97%			39	58			1	2	0	
06/20/14	Fri	94%			4	1		1	60	34	0		96%			44	52			2	2	0	
06/21/14	Sat																						
06/22/14	Sun																						
06/23/14	Mon	90%			9	1			54	36	0		94%			39	55			4	2	0	
06/24/14	Tue	0%			44	56					0	190-280@5knts,RA	100%			38	62					0	
06/25/14	Wed	95%			3	2			58	37	0		95%			37	58			2	3	0	
06/26/14	Thu	96%			4				59	37	0		94%			40	54			2	4	0	
06/27/14	Fri	42%			19	39			23	19	0	140-200@3-8knts,RA	99%			33	66			1		0	
06/28/14	Sat																						
06/29/14	Sun																						
06/30/14	Mon	0%			47	53					0	180-190@6-8knts	100%			38	62					0	

Preferred Flow

DATIS Reported Conditions Indicate  
Support for Non-Preferred Flow

DATIS Reported Conditions Do Not Indicate  
Support for Non-Preferred Flow



***LOUISVILLE  
REGIONAL  
AIRPORT  
AUTHORITY®***

# **NOISE COMMENT REPORT**

**May 2014**

# Comments (SDF/LOU)

## May 2014

Street	Zip Code	Time Received	Time	Airport	Disturbance Type	CNF Quad	Status	Operation or Comment Type <sup>1</sup>	Deviation Type <sup>2</sup>	Comments
Meridale AV	40214	2014-05-01 09:58:58	2014-05-01 09:58:58	SDF	Other	SW	Investigated	LQHP	None	<p>Good evening, I am emailing to request information on how one becomes an eligible participant in this program. I have reviewed most of the information on your website, but for some reason do not see my neighborhood in any of the listings. I live on Meridale Avenue in the Beechmont neighborhood. Meridale is situated between 1st and 3rd at the Watterson. I have been in my home a year now. Lately I have noticed increased air traffic directly over my home.</p> <p>As I read about the North/South flight patterns, I am confused as I am due west of the airport. Is this area under consideration for the quiet home program? Any information you could provide would be most helpful. The noise, especially from about 4:00 AM to about 5:30 AM has been especially loud lately as the planes prepare to take off and go over head.</p>
Wren RD	40213	2014-05-05 09:58:58	2014-05-05 01:05:25	SDF	Other	NE	Investigated	LQHP	None	Homeowner called to see if his home is in the QuieterHome Program.
Belmar DR	40213	2014-05-07 09:58:58	2014-05-05 01:05:25	SDF	Other	NE	Investigated	LQHP	None	<p>I live on Belmar Drive and while looking at the phases for the Quieter Home Program, I see that the cut off on my street was 5 houses from my property (Belmar and Fayette). I wanted to inquire as to how the boundaries for the phases were determined? My husband and I hear a lot of flight traffic inside our home especially during peak hours for UPS late at night. Will there be another evaluation done? I hear similar complaints from my neighbors on my block.</p>

1. **Standard:** Indicates the “Most Preferred” runway configuration was being utilized at the time of the comment.  
**Non Standard:** Indicates that a “Lesser Preferred” runway configuration was being utilized at the time of the comment.  
**QHP:** QuieterHome Program

2. This column is used to indicate the conditions which most likely necessitated a deviation from the standard procedures.



# Comments (SDF/LOU)

## May 2014

Street	Zip Code	Time Received	Time	Airport	Disturbance Type	CNF Quad	Status	Operation or Comment Type <sup>1</sup>	Deviation Type <sup>2</sup>	Comments
Preston HWY	40213	2014-05-05 09:58:58	2014-05-05 09:58:58	SDF	Other	NE	Investigated	LQHP	None	Homeowner called to say he has a commercial property that has an apartment above.
Bradley AV	40217	2014-05-12 09:58:58	2014-05-12 01:05:25	SDF	Other	NE	Investigated	LQHP	None	Homeowner called to see about being in the program.
Louisa AV	40217	2014-05-13 12:12:07	2014-05-13 12:00:00	SDF	Other	NE	Investigated	LQHP	None	Homeowner called to say that he sees the construction happening across the street and wants to know when we will be doing his house.
English AV	40217	2014-05-15 02:10:15	2014-05-15 02:10:15	SDF	Other	NE	Investigated	LQHP	None	Homeowner called to see if his property was in the program.
Rawlings ST	40217	2014-05-15 12:12:07	2014-05-15 12:12:07	SDF	Other	NE	Investigated	LQHP	None	Homeowner called to ask if his property was in the program.
Atwood ST	40217	2014-05-15 12:12:07	2014-05-15 12:12:07	SDF	Other	NE	Investigated	LQHP	None	Homeowner called to see if his home was in the program.
Scholar ST	40213	2014-05-15 12:12:07	2014-05-15 12:15:07	SDF	Other	SE	Investigated	LQHP	None	Homeowner called to see if his property was in the program.
W Kenwood Way	40214	2014-05-28 02:10:15	2014-05-28 02:10:15	SDF	Other	SW	Investigated	LQHP	None	Homeowner said he lives behind the airport and wanted to see if his home was in the program.

1. **Standard:** Indicates the “Most Preferred” runway configuration was being utilized at the time of the comment.  
**Non Standard:** Indicates that a “Lesser Preferred” runway configuration was being utilized at the time of the comment.  
**QHP:** QuieterHome Program

2. This column is used to indicate the conditions which most likely necessitated a deviation from the standard procedures.

# Comments (SDF/LOU)

## May 2014

Street	Zip Code	Time Received	Time	Airport	Disturbance Type	CNF Quad	Status	Operation or Comment Type <sup>1</sup>	Deviation Type <sup>2</sup>	Comments
Forum AV	40214	2014-05-30 02:10:15	2014-05-30 02:10:15	SDF	Other	SW	Investigated	LQHP	None	Homeowner called to have someone come to his house and see if he was in the program.
Clarks LN	40217	2014-05-30 02:15:15	2014-05-30 02:15:15	SDF	Other	NE	Investigated	LQHP	None	Homeowner called because his neighbor received a letter from us and wanted to know about his home.
							Received	LQHP	13	
Louisa AV	40217	2014-05-01 12:12:07	2014-05-01 12:00:00	SDF	Other	NE	Investigated	Standard	None	The Airport Authority is having sound proofing done on the house across the street from us. When they were out doing the sound testing they said our side of the street was not being checked. At that time we tried in vain to contact someone about this. The work on that house again has made me start again checking on this. In the mornings in the front bedroom the planes wake you up. If you are outside conversations end until the planes go over. Any help on this would be appreciated.
Audubon PKY	40213	2014-05-04 08:22:41	2014-05-04 07:30:00	SDF	Noise At Wrong Time	NE	Investigated	Non-Standard	None	Day after Derby, with all the small but noisy planes streaming out of town. An otherwise brilliant, idyllic Sunday morning in our hometown - sunny, dry and mild, light wind from the south - and the airfield in north flow, again, bombarding all the hapless neighborhoods nearby, in utter defiance of published runway use procedures. Really?
W. Ormsby	40203	2014-05-21 23:26:38	2014-05-05 22:00:00	SDF	Over Use of Runway	NW	Investigated	Non-Standard	Weather	We have a lot of planes going overhead and they are loud tonight. We have had a lot of planes this month. The nights of May 5, 6, 7, 8, 14, 19, 20 and tonight the 21st. A lot of airplanes.

1. **Standard:** Indicates the "Most Preferred" runway configuration was being utilized at the time of the comment.  
**Non Standard:** Indicates that a "Lesser Preferred" runway configuration was being utilized at the time of the comment.  
**QHP:** QuieterHome Program

2. This column is used to indicate the conditions which most likely necessitated a deviation from the standard procedures.

# Comments (SDF/LOU)

## May 2014

Street	Zip Code	Time Received	Time	Airport	Disturbance Type	CNF Quad	Status	Operation or Comment Type <sup>1</sup>	Deviation Type <sup>2</sup>	Comments
Eastern PKY	40217	2014-05-07 14:44:41	2014-05-07 14:00:00	SDF	Other	NE	Investigated	Standard	Ops	At approximately 2:30 PM on 05/07/14 UPS flight 327 was approaching the east runway from the north close behind another UPS plane and then aborted its landing. It flew back around and landed on the west runway. I am concerned if there were any safety issues involved. Thank you -Schnitzelburg
Bradley AVE	40217	2014-05-12 12:13:34	2014-05-12 12:13:00	SDF	Other	NE	Investigated	Standard	None	I am a resident on Bradley Ave. Numerous airplanes fly low over my home daily and often multiple an hour. I just spoke with the folks associated with the Quieter Home program and they informed me that our area was not covered in your guidelines. Can you please tell me what factors go into making this decision and why we don't meet them? Also, could you please tell me if there is a time in the near future you plan on revisiting these guidelines to include more affected homes?

1. **Standard:** Indicates the "Most Preferred" runway configuration was being utilized at the time of the comment.  
**Non Standard:** Indicates that a "Lesser Preferred" runway configuration was being utilized at the time of the comment.  
**QHP:** QuieterHome Program

2. This column is used to indicate the conditions which most likely necessitated a deviation from the standard procedures.

# Comments (SDF/LOU)

## May 2014

Street	Zip Code	Time Received	Time	Airport	Disturbance Type	CNF Quad	Status	Operation or Comment Type <sup>1</sup>	Deviation Type <sup>2</sup>	Comments
Louisa AV	40217	2014-05-13 11:12:07	2014-05-13 11:00:00	SDF	Other	NE	Investigated	Non-Standard	None	We called the number you gave us and were told that there are NO plans to do anything on our side of the street. I do not understand that. We are directly across the street from one house that they are doing major updates for. Plus many other houses on that side of the street. I could understand if it was the next street over. When we are watching TV you can't have the front door open, unless you turn up the sound when a plane goes over and being outside, forget conversations when they fly by. Also, the windows rattle, especially in the front of the house. As an example, the baby sleeps in the front bedroom and last night around 2 AM until after 2:30 he kept waking up because you could hear plane engine sounds. I could also hear them from the back bedroom last night. Any help on this would be greatly appreciated.
Delor AV	40217	2014-05-15 10:22:38	2014-05-14 21:30:00	SDF	Too Much Noise	NE	Investigated	Non-Standard	Weather	I would like for you to check operations for last night and this morning. The noise was really bad. Has something changed?

1. **Standard:** Indicates the "Most Preferred" runway configuration was being utilized at the time of the comment.  
**Non Standard:** Indicates that a "Lesser Preferred" runway configuration was being utilized at the time of the comment.  
**QHP:** QuieterHome Program

2. This column is used to indicate the conditions which most likely necessitated a deviation from the standard procedures.

# Comments (SDF/LOU)

## May 2014

Street	Zip Code	Time Received	Time	Airport	Disturbance Type	CNF Quad	Status	Operation or Comment Type <sup>1</sup>	Deviation Type <sup>2</sup>	Comments
Forum AV	40214	2014-05-29 12:50:14	2014-05-29 01:30:00	SDF	Too Much Noise	SW	Investigated	Standard	None	I am starting to be awakened again by your planes out there at the Louisville airport. I know that you are the man that is going to be able to help me sleep at night. That is why I am calling you Bob. Last night it started around 2:00 AM. So what are you guys doing about me being able to sleep at night? Do I need to move? Will you help me move? That is the first question. It is extremely loud; I probably did not get any sleep after 2:30 AM due to your planes and the noise of the planes. I know, I am not actually hearing the noise it is just my imagination but I am being woke up by something from your direction. The other thing we have talked before about is that there is some type of alarm going off. Well I found out what it is. It is the alarm for the inclement weather that you have over there on your facility. Why do I have to hear your alarm? Do you hear my alarm clock? I found out what that alarm is and I want to know why I am hearing it at my house. I don't want to hear it and it is quite annoying even more annoying than the planes. So Bob, once you digest this conversation you call me back. I look forward to hearing from you.
Parklawn DR	40217	2014-05-31 18:53:22	2014-05-31 03:00:00	SDF	Other	NE	Investigated	Standard	None	I live on Parklawn Drive. The noise in the early AM from jets taking off one after another is pretty loud. Is the George Rogers Clark Park neighborhood in line for sound proofing?
							Received	LRAA	9	

1. **Standard:** Indicates the “Most Preferred” runway configuration was being utilized at the time of the comment.  
**Non Standard:** Indicates that a “Lesser Preferred” runway configuration was being utilized at the time of the comment.  
**QHP:** QuieterHome Program

2. This column is used to indicate the conditions which most likely necessitated a deviation from the standard procedures.

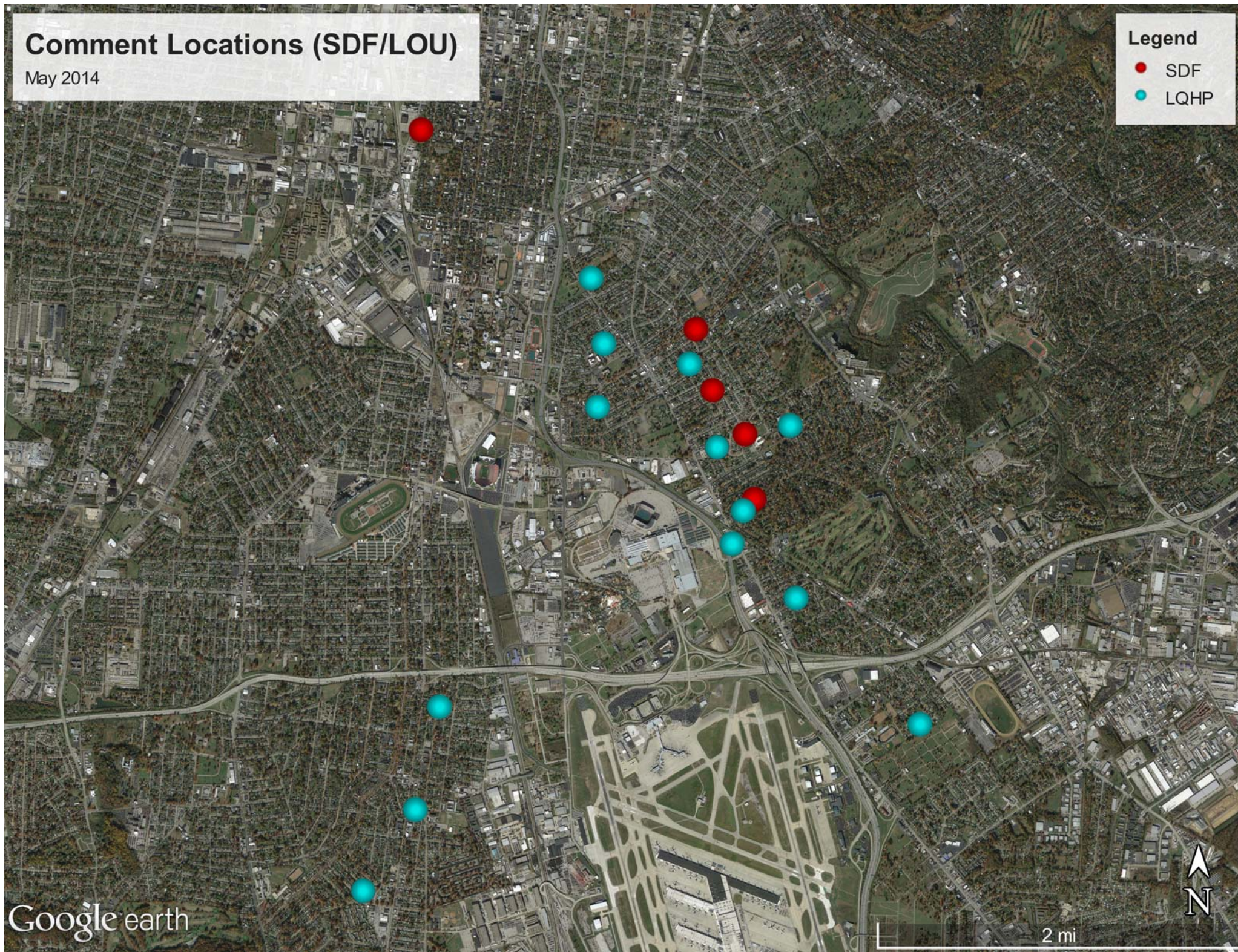


# Comment Locations (SDF/LOU)

May 2014

## Legend

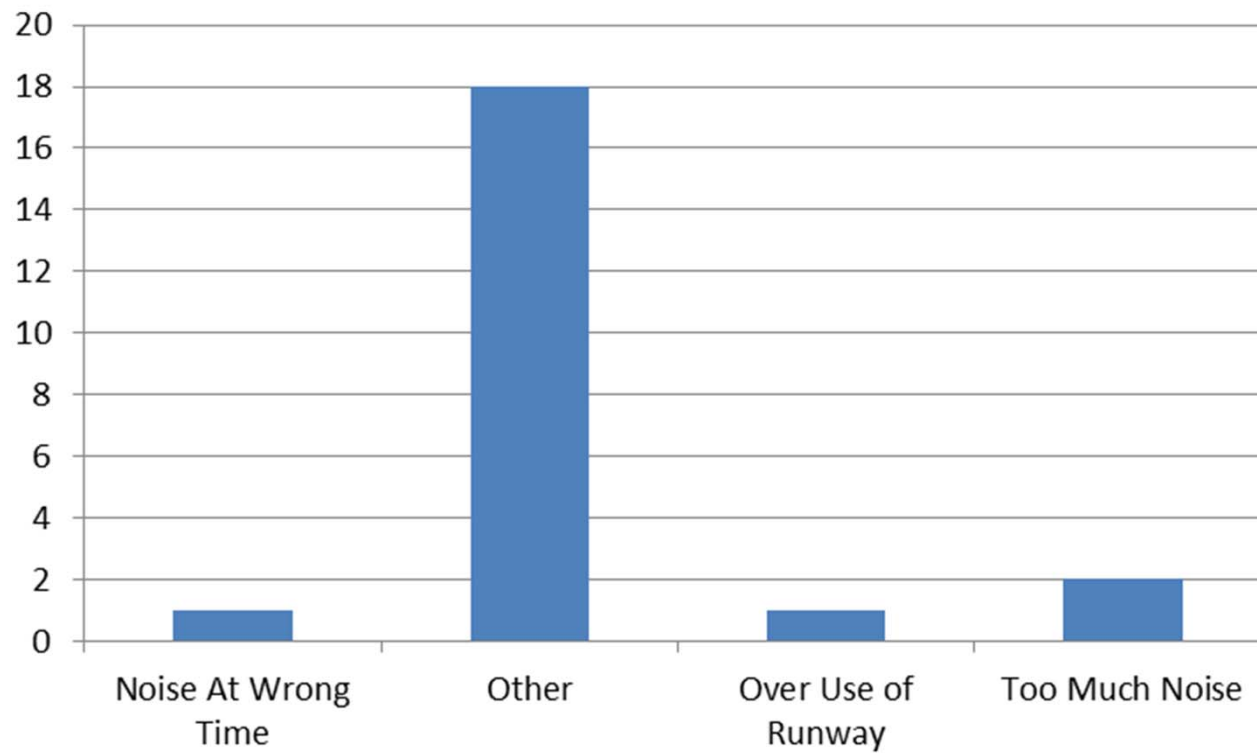
- SDF
- LQHP





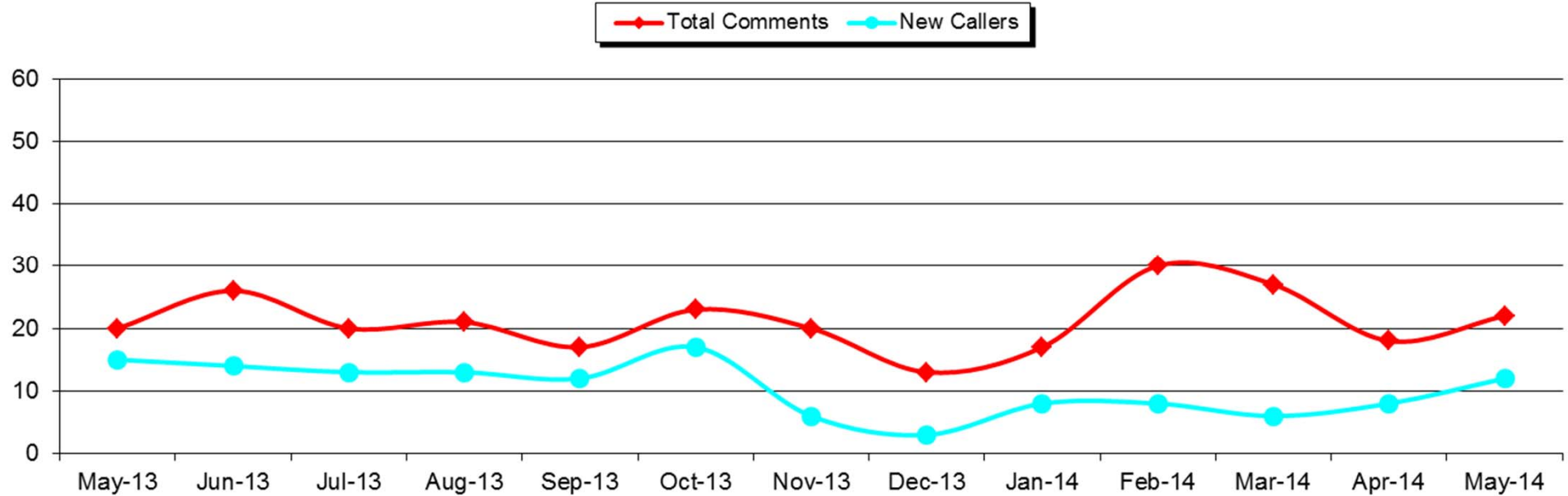
# Comment Type\* (SDF and LOU)

May 2014



# New Address/Comments per Month (SDF and LOU)

May 2014







***LOUISVILLE  
REGIONAL  
AIRPORT  
AUTHORITY®***

# **NOISE COMMENT REPORT**

**June 2014**

# Comments (SDF/LOU)

## June 2014

Street	Zip Code	Time Received	Time	Airport	Disturbance Type	CNF Quad	Status	Operation or Comment Type <sup>1</sup>	Deviation Type <sup>2</sup>	Comments
Fetter AV	40217	2014-06-04 09:30:36	2014-06-04 09:30:36	SDF	Other	NE	Investigated	LQHP	None	Renter called to check eligibility and see about the QuieterHome program. He does not understand why the planes come over his home but he is not part of the program. He had gotten our number from a neighbor.
Bourbon AV	40213	2014-06-04 10:30:36	2014-06-04 10:30:36	SDF	Other	NE	Investigated	LQHP	None	Homeowner called to see about being in the program.
Texas AV	40217	2014-06-11 10:30:36	2014-06-11 10:30:36	SDF	Other	NE	Investigated	LQHP	None	I live on Texas Avenue. It is my understanding that our home does not qualify. When I bought my property 25 years ago... the airplanes went over Audubon. I was not in the landing zone and you all built a runway, then had public meetings acting as if we had a say in the matter. Again, the runway was already poured. I do not understand why people in Audubon are getting sound proofed when they are no longer in the zone. They bought their homes knowing what they were in for as far as noise. I bought my home in a quiet zone. So why does someone no longer in the zone get soundproofing and my area that is in the direct path does not?
Texas AV	40217	2014-06-12 10:30:36	2014-06-12 10:30:36	SDF	Other	NE	Investigated	LQHP	None	Again, I am in MAIN PATH OF AIRPLANE NOISE. AUDUBON IS NOT! SO YOUR RESPONSE IS NOT VALID. SEND SOMEONE TO DO LEVELS AND I ASSURE YOU I AM WITHIN NOISE LEVEL NOT TO MENTION BLACK FUEL THEY ARE DUMPING ON MY PROPERTY. I have lived here for 25 years and never had black crude on my property until airplanes started coming over, and cracks in my plaster.

1. **Standard:** Indicates the "Most Preferred" runway configuration was being utilized at the time of the comment.  
**Non Standard:** Indicates that a "Lesser Preferred" runway configuration was being utilized at the time of the comment.  
**QHP:** QuieterHome Program

2. This column is used to indicate the conditions which most likely necessitated a deviation from the standard procedures.

# Comments (SDF/LOU)

## June 2014

Street	Zip Code	Time Received	Time	Airport	Disturbance Type	CNF Quad	Status	Operation or Comment Type <sup>1</sup>	Deviation Type <sup>2</sup>	Comments
Partridge Run	40213	2014-06-17 11:30:36	2014-06-17 11:30:36	SDF	Other	NE	Investigated	LQHP	None	Homeowner called to see if their neighborhood would ever be included in the program.
Packard AV	40217	2014-06-20 10:46:03	2014-06-20 10:46:03	SDF	Other	NE	Investigated	LQHP	None	Homeowner called again to see if anything has changed about her house being in the program.
Parkway DR	40217	2014-06-23 10:46:03	2014-06-23 10:46:03	SDF	Other	NE	Investigated	LQHP	None	Homeowner came over to ask about the boundary lines.
Sylvia ST	40217	2014-06-23 11:46:03	2014-06-23 11:46:03	SDF	Other	NE	Investigated	LQHP	None	Homeowner was checking to see if there had been any change to the boundary.
Norton AV	40213	2014-06-26 11:46:03	2014-06-26 11:46:03	SDF	Other	SE	Investigated	LQHP	None	Homeowner was checking to see if his home is in the program?
							Received	LQHP	9	
Taylorsville RD	40205	2014-06-03 08:49:06	2014-06-05 02:30:00	LOU	Too Much Noise	NE	Investigated	Standard	None	I am wondering if anything can be done about the noise. My house is in the flight pattern, both takeoff and landing and it seems there are more jets flying over which is quite loud.
S. 2nd ST		2014-06-05 12:29:06	2014-06-05 02:30:00	SDF	Too Much Noise	NW	Investigated	Non-Standard	Weather	The noise from the Airport is waking me up at 3 AM.

1. **Standard:** Indicates the “Most Preferred” runway configuration was being utilized at the time of the comment.  
**Non Standard:** Indicates that a “Lesser Preferred” runway configuration was being utilized at the time of the comment.  
**QHP:** QuieterHome Program

2. This column is used to indicate the conditions which most likely necessitated a deviation from the standard procedures.

# Comments (SDF/LOU)

## June 2014

Street	Zip Code	Time Received	Time	Airport	Disturbance Type	CNF Quad	Status	Operation or Comment Type <sup>1</sup>	Deviation Type <sup>2</sup>	Comments
Barbee AV	40217	2014-06-13 09:28:06	2014-06-13 09:28:59	SDF	Other	NW	Investigated	Standard	None	We have received several questions about the “Noise Abatement” program and if funding is still available and where? Can you or a representative contact the President of the St. Joseph Neighborhood to discuss?
Parkway DR	40217	2014-06-23 11:40:06	2014-06-23 11:40:59	SDF	Too Much Noise	Ne	Investigated	Standard	None	I am calling for my sister and her husband. They live on Parkway Drive. She has lost her hearing because of the planes going over non-stop 24 hours a day. She has checked with the QuieterHome office and they informed her she was not eligible.
Parklawn DR	40217	2014-06-25 10:06:04	2014-06-25 10:00:00	SDF	Other	NE	Investigated	Standard	None	I am calling about the QuieterHome project that’s been taking place in Parkway Village. I am not technically in Parkway Village but I am right next door to Parkway Village. I was inquiring to see if there was an application that I could fill out for the program to reduce the noise of the airplanes especially through the night.
Rosemary DR	40213	2014-06-30 11:00:04	2014-06-30 11:00:59	SDF	Other	NE	Investigated	Standard	None	I was checking to see how you determined what homes would qualify for the sound insulation program. We just moved here in February and the noise is not bad all the time but sometimes it is.
							Received	LRAA	6	

1. **Standard:** Indicates the “Most Preferred” runway configuration was being utilized at the time of the comment.  
**Non Standard:** Indicates that a “Lesser Preferred” runway configuration was being utilized at the time of the comment.  
**QHP:** QuieterHome Program

2. This column is used to indicate the conditions which most likely necessitated a deviation from the standard procedures.

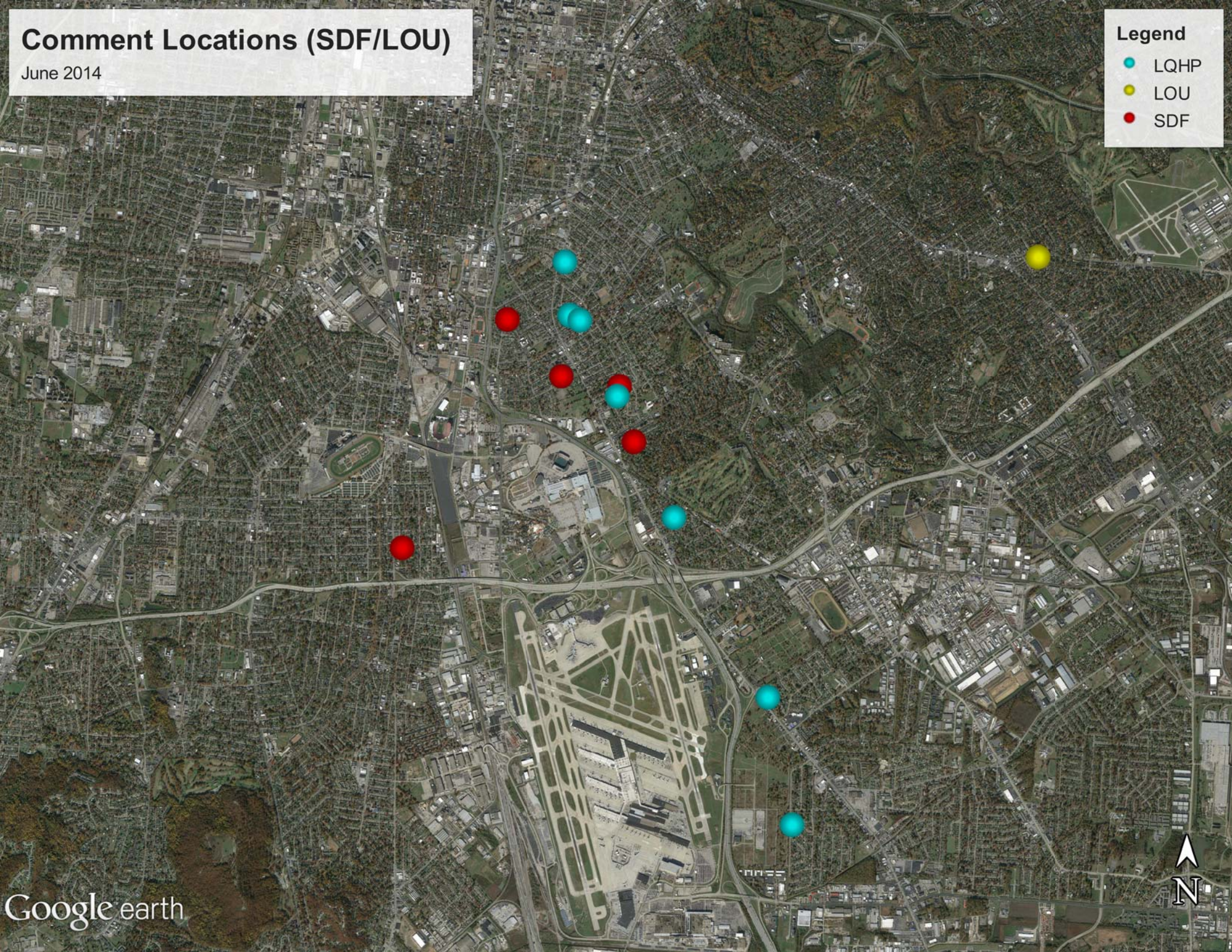


# Comment Locations (SDF/LOU)

June 2014

## Legend

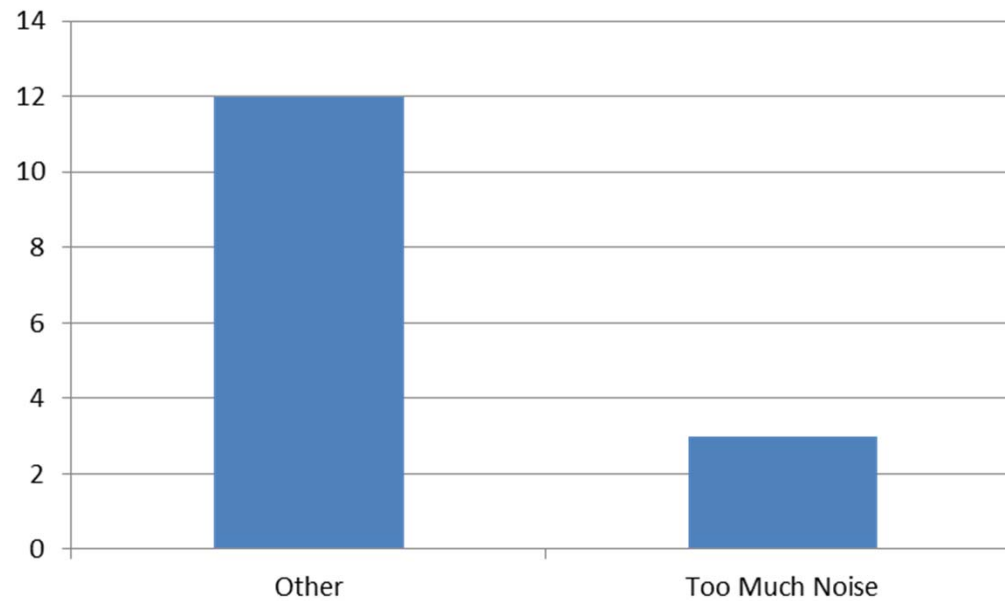
- LQHP
- LOU
- SDF





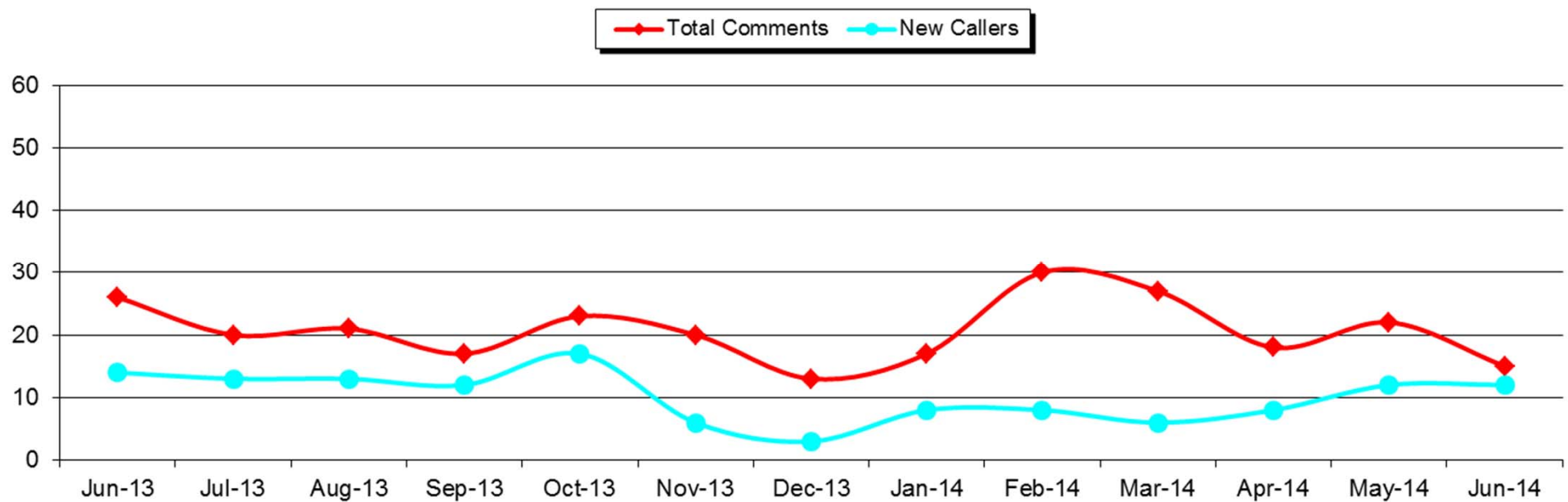
# Comment Type\* (SDF and LOU)

June 2014



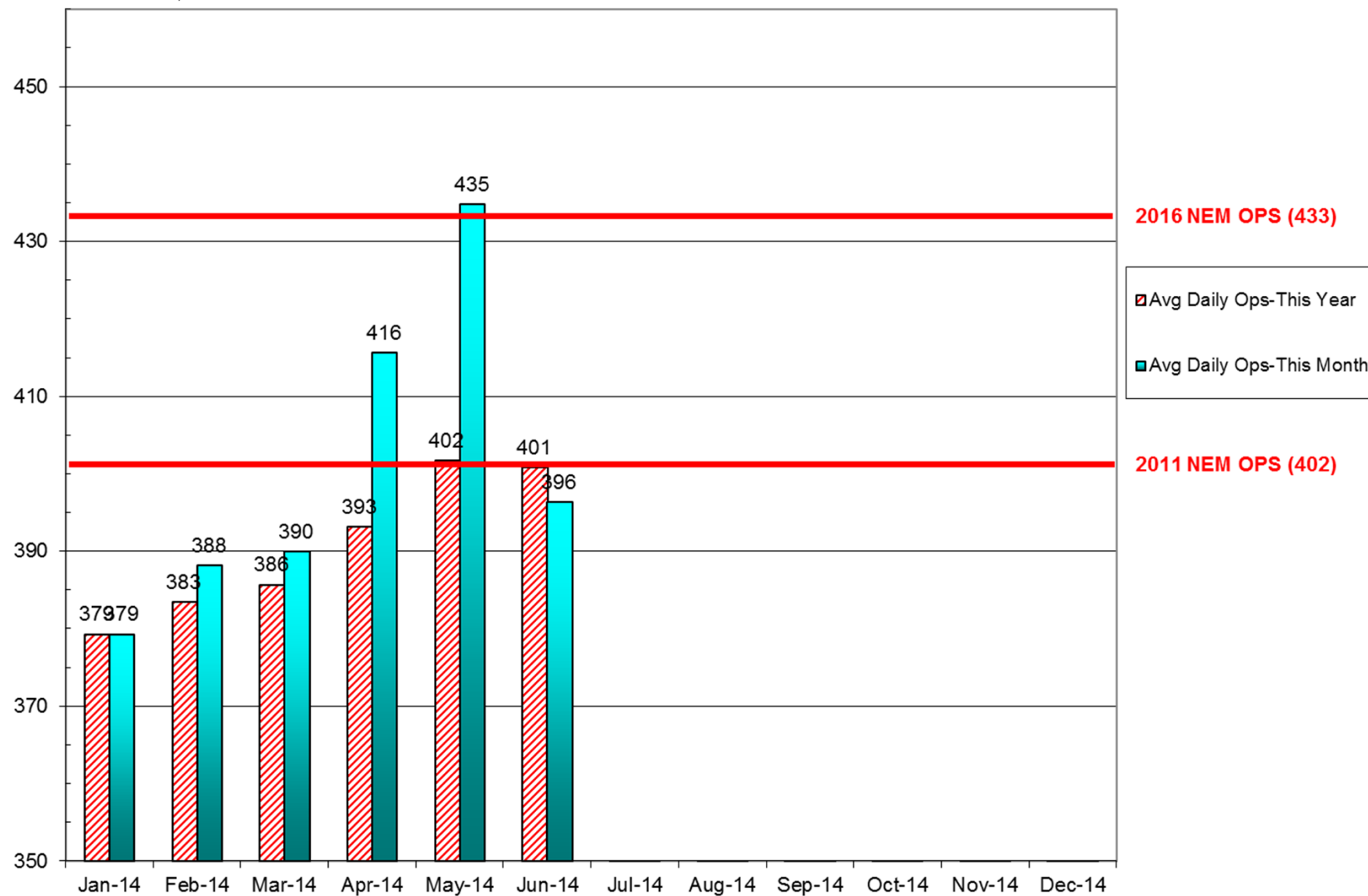
# New Address/Comments per Month (SDF and LOU)

June 2014



# Operations (SDF)

As of June 30, 2014



Source: Louisville <http://www.flylouisville.com/regional-airport-authority/reports-and-statistics/>



# Daily Runway Use Uncorrected (SDF) May 2014

Flow	Time	Thu 5/1	Fri 5/2	Sat 5/3	Sun 5/4	Mon 5/5	Tue 5/6	Wed 5/7	Thu 5/8	Fri 5/9	Sat 5/10	Sun 5/11	Mon 5/12	Tue 5/13	Wed 5/14	Thu 5/15	Fri 5/16	Sat 5/17	Sun 5/18	Mon 5/19	Tue 5/20	Wed 5/21	Thu 5/22	Fri 5/23	Sat 5/24	Sun 5/25	Mon 5/26	Tue 5/27	Wed 5/28	Thu 5/29	Fri 5/30	Sat 5/31	Time
North Flow	0:00																																0:00
	0:30																																0:30
	1:00																																1:00
	1:30																																1:30
	2:00																																2:00
	2:30																																2:30
South Flow	3:00																																3:00
	3:30																																3:30
	4:00																																4:00
	4:30																																4:30
	5:00																																5:00
	5:30																																5:30
	6:00																																6:00
	6:30																																6:30
	7:00																																7:00
	7:30																																7:30
	8:00																																8:00
	8:30																																8:30
North Flow	9:00																																9:00
	9:30																																9:30
	10:00																																10:00
	10:30																																10:30
	11:00																																11:00
	11:30																																11:30
South Flow	12:00																																12:00
	12:30																																12:30
	13:00																																13:00
	13:30																																13:30
	14:00																																14:00
	14:30																																14:30
	15:00																																15:00
	15:30																																15:30
	16:00																																16:00
	16:30																																16:30
	17:00																																17:00
North Flow	17:30																																17:30
	18:00																																18:00
	18:30																																18:30
	19:00																																19:00
	19:30																																19:30
	20:00																																20:00
North Flow	20:30																																20:30
	21:00																																21:00
	21:30																																21:30
	22:00																																22:00
	22:30																																22:30
	23:00																																23:00
Flow	23:30																																23:30
	0:00																																0:00

Preferred Flow

DATIS Reported Conditions Indicate Support for Non-Preferred Flow

DATIS Reported Conditions Do Not Indicate Support for Non-Preferred Flow

South Flow is Preferred Flow from 09:30 Saturday - 09:30 Monday

XXX Complaint

Source: Louisville International Airport Aircraft Flight Tracking and Noise Management System (AFTNMS)

# Daily Runway Use (SDF)

Tower Comments May 2014

Day	Date	Time	Comment
thu	1-May-14		
fri	2-May-14	0930-1230	Derby traffic volume, forecast 2312
sat	3-May-14		
sun	4-May-14	0730-1530	Derby departure tfc, forecast 2910G17
sun	4-May-14	2100-2400	Wind 0313
mon	5-May-14	0930-1230	Wind 1509
tue	6-May-14		
wed	7-May-14		
thu	8-May-14		
fri	9-May-14		
sat	10-May-14		
sun	11-May-14		
mon	12-May-14	2200-2400	Wind 1610
tue	13-May-14	0000-0230	Unable chng during UPS inbound, wind 2009
wed	14-May-14		
thu	15-May-14	1830-2130	Wind 3016
fri	16-May-14	1200-1230	Wind 2106 wet runways
fri	16-May-14	2100-2130	Wind 3210, Forecast 3021G25
sat	17-May-14	1800-1930	Wind 3310
sun	18-May-14		
mon	19-May-14		
tue	20-May-14	2200-2400	Forecast @2000 ft 2435
wed	21-May-14	0000-0230	Unable rwy change during UPS inbound
wed	21-May-14	0930-1230	Wind 2312
thu	22-May-14	1300-1430	Wind forecast 3110
thu	22-May-14	2100-2130	Forecast 3311, strong north winds aloft.
fri	23-May-14		
sat	24-May-14		
sun	25-May-14		
mon	26-May-14	0930-1230	No valid reason.
tue	27-May-14		
wed	28-May-14		
thu	29-May-14		
fri	30-May-14		
sat	31-May-14		

# Daily Runway Use Uncorrected (SDF) June 2014

[illegible]

# Daily Runway Use (SDF)

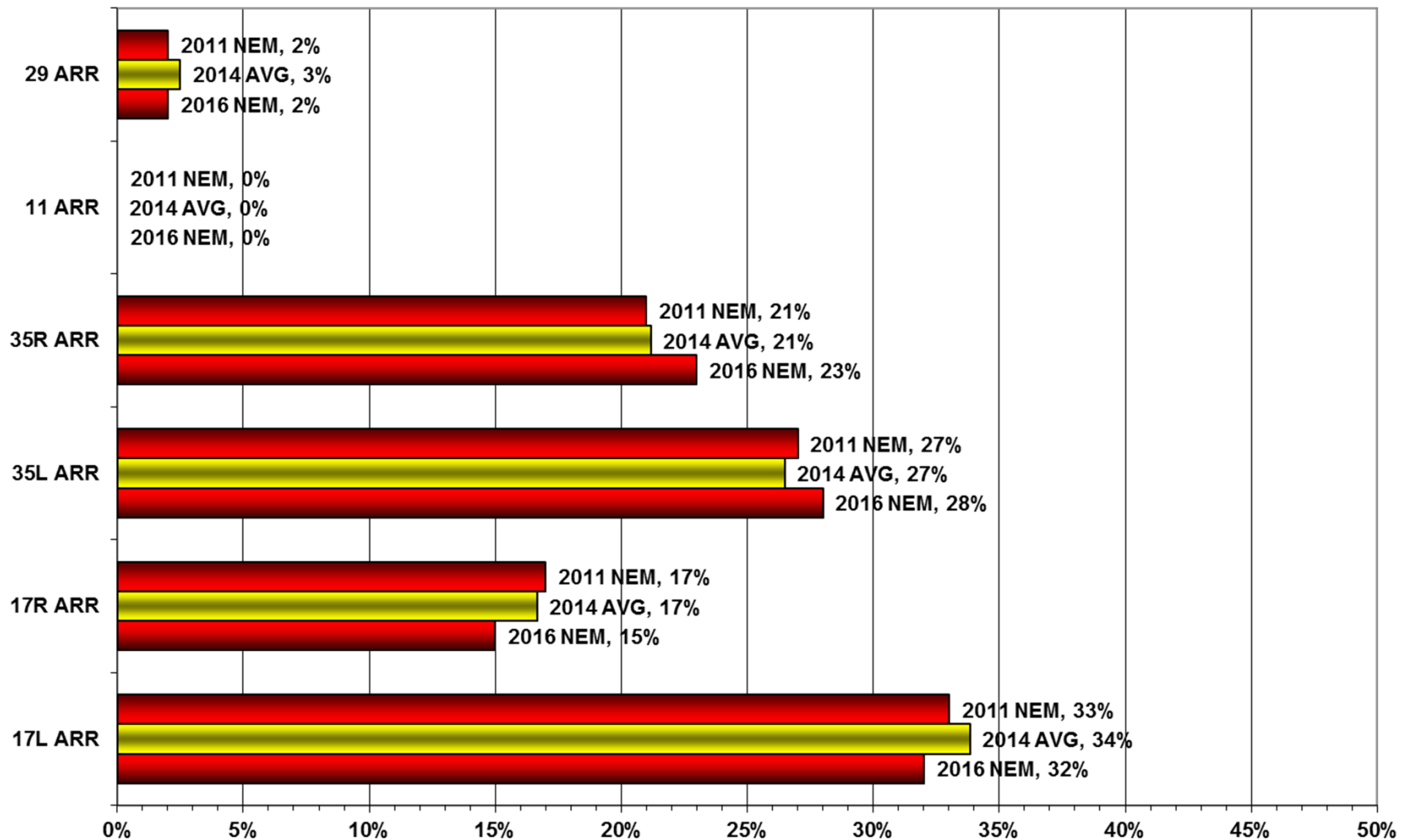
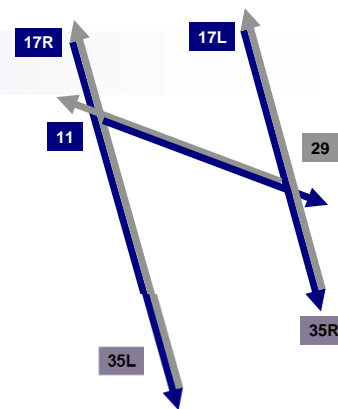
Tower Comments June 2014

Day	Date	Time	Comment
Sun	1-Jun-14		
Mon	2-Jun-14		
Tue	3-Jun-14		
Wed	4-Jun-14		
Thu	5-Jun-14	0830-0900	Wind 0210
Fri	6-Jun-14		
Sat	7-Jun-14		
Sun	8-Jun-14	1930-2100	Wind 3214
Mon	9-Jun-14	0930-1000	North flow delayed due to traffic
Mon	9-Jun-14	1300-1330	Log shows went south at 1335
Tue	10-Jun-14	0930-1030	Wind 2010
Wed	11-Jun-14		
Thu	12-Jun-14	1800-2130	Wind 3610, no valid reason after 2058
Fri	13-Jun-14		
Sat	14-Jun-14		
Sun	15-Jun-14		
Mon	16-Jun-14	0930-1230	Wind 2212
Tue	17-Jun-14	1030-1230	Wind 2213
Wed	18-Jun-14		
Thu	19-Jun-14		
Fri	20-Jun-14		
Sat	21-Jun-14	1500-1630	Wind 3509
Sat	21-Jun-14	1830-2030	No valid reason
Sun	22-Jun-14		
Mon	23-Jun-14	0930-1230	No valid reason
Tue	24-Jun-14		
Wed	25-Jun-14		
Thu	26-Jun-14		
Fri	27-Jun-14	0930-1230	R3704B Active
Fri	27-Jun-14	2000-2130	Wind 0311, wet runways
Sat	28-Jun-14		
Sun	29-Jun-14		
Mon	30-Jun-14	0930-1230	R3704B Active

# Runway Use (SDF)

Arrivals

NEM vs. Actual  
January 01 - June 30, 2014

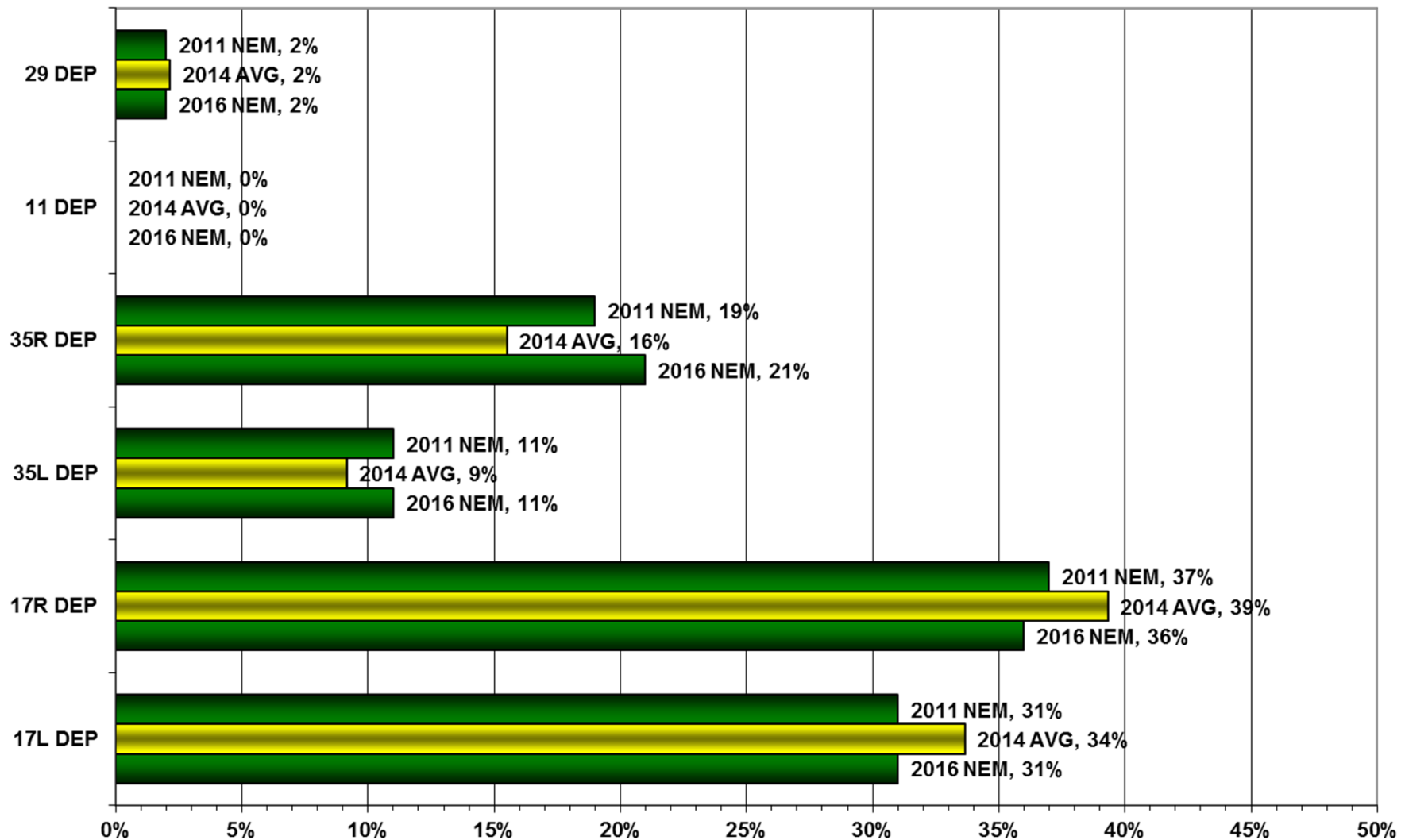
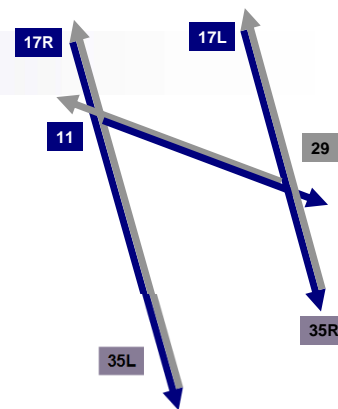


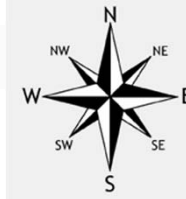
Source: Louisville International Airport  
Aircraft Flight Tracking and Noise Management System (AFTNMS)

# Runway Use (SDF)

Departures

NEM vs. Actual  
January 01, - June 30, 2014



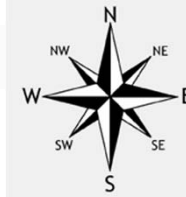


# Runway Use 0930L-1230L<sub>(SDF)</sub>

As of June 2014

	Arrival Percentage by Runway							Arrival Count	Departure Percentage by Runway							Departure Count
	11	17L	17R	29	35L	35R	% From South		11	17L	17R	29	35L	35R	% To North	
Jul-12	0	6	32	0	49	13	62	619	0	8	27	3	45	17	62	384
Aug-12	0	26	23	0	34	17	51	717	0	24	26	1	21	28	49	437
Sep-12	0	29	10	0	21	40	61	655	0	33	10	1	13	43	56	353
Oct-12	1	20	26	3	20	31	51	740	2	24	19	3	9	43	52	475
Nov-12	0	10	4	3	50	33	83	762	0	7	4	3	9		9	
Dec-12	0	18	12	5	41	24	65	779	0	17	9	3	8	63	71	412
Jan-13	0	16	12	0	42	30	72	742	0	17	16	2	14	52	66	436
Feb-13	0	21	11	9	39	2	41	628	0	21	16	7	12	44	56	354
Mar-13	0	10	6	0	51	33	84	728	0	10	8	3	14	65	79	441
Apr-13	0	24	27	2	27	20	47	719	0	26	23	3	8	40	48	441
May-13	0	33	33	0	20	14	34	785	0	33	31	1	10	25	35	410
Jun-13	0	10	13	0	43	31	74	717	0	8	13	0	22	57	79	534
Jul-13	0	23	10	0	42	25	67	694	0	24	12	0	20	44	64	465
Aug-13	0	22	10	0	43	25	68	725	0	18	13	0	13	56	69	483
Sep-13	0	13	5	0	43	39	82	676	0	14	5	0	25	56	81	448
Oct-13	0	16	14	2	37	31	68	864	0	12	18	3	13	54	67	535
Nov-13	0	29	12	0	39	20	59	721	0	26	19	3	12	40	52	437
Dec-13	0	14	13	0	42	31	73	943	0	14	16	0	9	61	70	460
Jan-14	0	27	21	2	29	21	50	682	0	28	21	4	19	37	56	401
Feb-14	0	13	11	7	37	32	69	669	0	19	11	7	15	48	63	359
Mar-14	0	25	21	7	29	18	47	675	0	30	18	4	7	41	48	408
Apr-14	0	33	19	5	23	20	43	700	0	39	19	6	9	27	36	416
May-14	0	32	25	0	24	19	43	706	0	36	22	1	5	36	41	387
Jun-14	0	27	22	0	36	15	51	643	0	36	20	2	10	32	42	389
Monthly Avg.	0	21	16	2	36	24	60		0	22	17	3	14	44	58	

Source: Louisville International Airport  
Aircraft Flight Tracking and Noise Management System (AFTNMS)



# Gate Compliance by Runway

As of June 30, 2014

	ARRIVALS Percent Compliant					Departure Percent Compliant				
Month	17L	17R	35L	35R	ARR AVG	17L	17R	35L	35R	DEP AVG
Jul-12	66%	83%	70%	76%	74%	62%	72%	77%	89%	75%
Aug-12	68%	85%	75%	77%	76%	63%	71%	83%	90%	77%
Sep-12	79%	93%	81%	78%	83%	53%	72%	72%	88%	71%
Oct-12	80%	92%	85%	82%	85%	70%	59%	70%	89%	72%
Nov-12	73%	73%	82%	85%	78%	84%	82%	84%	92%	86%
Dec-12	84%	93%	89%	91%	89%	74%	85%	72%	79%	78%
Jan-13	82%	93%	82%	83%	85%	73%	86%	81%	87%	82%
Feb-13	78%	93%	85%	84%	85%	73%	85%	76%	78%	78%
Mar-13	73%	86%	88%	86%	83%	82%	89%	82%	86%	85%
Apr-13	75%	90%	77%	78%	80%	73%	89%	80%	81%	81%
May-13	81%	87%	78%	77%	81%	70%	84%	76%	92%	81%
Jun-13	73%	84%	76%	82%	79%	76%	88%	74%	86%	81%
Jul-13	82%	87%	81%	82%	83%	81%	84%	76%	91%	83%
Aug-13	78%	89%	79%	81%	82%	78%	83%	78%	92%	83%
Sep-13	78%	88%	76%	81%	81%	79%	86%	77%	93%	84%
Oct-13	77%	90%	83%	79%	82%	75%	90%	77%	90%	83%
Nov-13	77%	93%	80%	82%	83%	71%	91%	79%	92%	83%
Dec-13	82%	94%	90%	89%	89%	64%	87%	71%	89%	78%
Jan-14	78%	88%	86%	84%	84%	67%	91%	75%	89%	81%
Feb-14	80%	89%	86%	85%	85%	60%	90%	76%	89%	79%
Mar-14	74%	90%	79%	81%	81%	71%	86%	78%	87%	81%
Apr-14	79%	91%	82%	81%	83%	68%	81%	76%	86%	78%
May-14	75%	88%	78%	81%	81%	68%	85%	59%	82%	74%
Jun-14	82%	92%	86%	82%	86%	71%	89%	81%	94%	84%
<b>24 Month Avg.</b>					<b>82%</b>					<b>80%</b>

Source: Louisville International Airport  
Aircraft Flight Tracking and Noise Management System (AFTNMS)



# Operations by Aircraft Type (SDF) Only Top 10 Aircraft Types Shown

May/June 2014

