

Community Noise Forum
Monday, July 24, 2017
Agenda

- I. Call to order: 6:00PM
- II. Minutes of May 22, 2017
- III. 747-800 Update
- IV. Part 150 NCP
 - A. Update: Noise Insulation Program
 - B. Contraflow Exceptions
 - C. NEM Update
- V. Current Noise Concerns
 - A. Noise Concerns/Complaints
 - B. Runway Utilization
 - C. Construction and Maintenance Activity
- VI. Announcements
- VII. Guest Comments
- VIII. Next Meeting: September 25, 2017
- IX. Adjournment

COMMUNITY NOISE FORUM (CNF)
Monday, May 22, 2017

Members

John Sistarenik, ANA
Bob Slattery, LRAA
Mary Rose Evans, LRAA Board
Brian Sinnwell, LRAA

Verná Goately, Metro
John Greathouse, Southwest (Alt)
Denny Thompson, SE
Ken Dietz, UofL

Guests

None

The meeting was called to order at 6:00 p.m. by John Sistarenik. A quorum was not present and the CNF operated as a committee of the whole. Any decisions made will need to be confirmed at the July meeting. The March meeting notes were reviewed and will be approved at the July meeting.

Part 150 NCP:

- A. Update: University of Louisville:** A total of 24 buildings have been tested. Testing results were received in October 2016. Two of the buildings tested had an overall interior noise level above 45 dB. There are six additional buildings that have rooms that exceed the 45 dB criteria on an individual basis but do not qualify for full treatment of the entire structure. Currently, we are in the environmental/design phase of the project. Hazardous materials testing was conducted May 10-12.
- B. Contraflow Exceptions:** Contraflow for March was 79% **for arrivals** from the south and 62% **for departures** to the south. In April, **arrivals** from south were 56% and **departures** to the south were 80%. A daily summary for March and April is contained in the handout. The 2 year average (May 2015- April 2017) for contraflow is 73% for arrivals and 78% for departures. A monthly summary going back 8 years is also included in the handout.

Current Noise Concerns:

- A. Report on Noise Concerns/Complaints:** A total of 19 comments were received in March. A cluster of comments on the west side was due to departures on runway 29 because of high winds from the west. In April, a total of 6 comments were received. Comments and locations are contained in the handout.

B. Runway Utilization: Runway utilization percentages for March and April are contained in the handout. Daily runway utilization and comments from the Air Traffic Control Tower are also included in the handout.

C. Construction and Maintenance Activity: Brian Sinnwell reported that there are several ongoing projects such as pavement rehabilitation, terminal apron repair, and airfield electrical. Most of this work is being done during the normal runway closure periods. If a runway must be closed for pavement rehabilitation then the electricians will work as well in order to minimize the impact as much as possible.

Guest Comments: None

Announcements: Mary Rose Evans informed the group that Skip Miller, Executive Director for the Airport Authority is retiring and that Karen Scott has been brought in as the interim Executive Director. A search committee is currently looking for a candidate to fill the position. The committee has asked to speak to members of the community in order to get their input on what they would look for in a potential candidate. John Sistarenik spoke with search committee and informed them that the new Executive Director should be familiar with airport noise issues and support the CNF in their efforts.

Next Meeting: Monday, July 24, 2017 at 6 p.m.

Adjournment: A motion was made to adjourn the meeting at 6:25 p.m.

COMMUNITY NOISE FORUM (CNF)
Monday, March 27, 2017

Members

John Sistarenik, ANA
Tom Foote, Airline Affairs
Mary Rose Evans, LRAA Board
Brian Sinnwell, LRAA
Bob Slattery, LRAA

Pat Gould, Northeast
John Greathouse, Southwest (Alt)
Denny Thompson, Southeast
Mike Zanone, Northwest
Verna Goately, Metro

Guests

Tom Denton, BNA
Shane Smith, Schnitzelburg

The meeting was called to order at 6:00 p.m. by John Sistarenik. A motion to approve the meeting notes for the January meeting as written was made by Pat Gould and seconded by Denny Thompson.

Election of officers for Chair and Vice Chair were held. John Sistarenik was re-elected as Chair with a nomination from Mike Zanone and seconded by Denny Thompson. Tom Foote was re-elected as Vice Chair with a nomination from Mary Rose Evans and seconded by John Greathouse. John and Tom will serve as Chair and Vice Chair, respectively, for one year.

Part 150 NCP:

The 2016 and 2021 Noise Exposure Maps and report were submitted to the FAA on December 23, 2016. We are currently awaiting FAA acceptance.

- A. **Update: University of Louisville:** A total of 24 buildings have been tested. Testing results were received in October 2016. Two of the buildings tested had an overall interior noise level above 45 dB. There are six additional buildings that have rooms that exceed the 45 dB criteria on an individual basis but do not qualify for full treatment of the entire structure. We are currently entering the design phase of the project.
- B. **Contraflow Exceptions:** Contraflow for January was 65% **for arrivals** from the south and 61% **for departures** to the south. In February, **arrivals** from south were 58% and **departures** to the south were 77%. A daily summary for January and February is contained in the handout. The 2 year average (March 2015-February 2017) for contraflow is 72% for arrivals and 78% for departures. A monthly summary going back 8 years is also included in the handout.

Current Noise Concerns:

A. Report on Noise Concerns/Complaints: A total of 11 comments were received in January. All on the east side of the airport, 1 was from Bowman Field. In February, a total of 20 comments were received. All comments were received by the LRAA. Comments and location are contained in the handout. On February 27 between approximately 10:00 p.m. and 11:00 p.m. an aircraft maintenance run-up was conducted on taxiway "A" on the west side of the airport. This event was responsible for 5 individual comments. Most run-ups conducted between the hours of 7:00 a.m. to 9:00 p.m. and the location is near the center of the airfield north of the UPS facilities. Run-ups may be required to be conducted at night or a different location. These exceptions are handled on a case-by-case basis and are not standard operating procedure. The established procedure for conducting engine run-ups has not changed.

B. Runway Utilization: Runway utilization percentages for January and February are contained in the handout. Daily runway utilization and comments from the Air Traffic Control Tower are also included in the handout.

C. Construction and Maintenance Activity: Brian Sinnwell reported that there are no active construction projects on the airfield. Apron work for areas around the terminal will begin in April. A runway rehab project for the west runway is slated for later this summer. There is good progress on the Woodlawn overpass. Currently, one half of the bridge is completed and open. Once the second half is completed we will begin the repaving and asphalt work on Almond Avenue. It is expected that this project will be completed in mid-summer. John Greathouse asked about the work going on over by Crittenden Drive. Brian explained that we were clearing trees and relocating utilities to help mitigate wildlife hazards and prepare the area for future development.

FAA Airspace Study Update: The FAA attended the January CNF Meeting and gave a presentation on the on-going airspace study. On 10 February the FAA met with the CNF Working Group and provided additional details of the study process. CNF Working Group members were invited to attend a March 9 airspace meeting held at UPS where the FAA gave an overview of the study process and presented some initial study recommendations. Bob Slattery summarized the meeting as follows: The process consists of 3 phases (1) study, (2) design, and (3) implementation. NEPA work typically occurs between the design and implementation phases. Currently we are at the end of the Study phase. The Study has identified 4 potential areas of improvement: (1) faster climb to higher altitudes on departure, (2) remain at higher altitudes for longer periods of time on approach, (3) reduce restrictions on special use airspace (Ft. Knox), and (4) reduce conflicts between airports (SDF, LOU, JYV). Environmentally, these recommendations could equate to a reduction in flying time as well as reduced fuel consumption. It is anticipated that the final study report will be delivered to the SDF study team by summer 2017. The study report will be a resource for the design team going forward. Mary Rose said that on March 13 at a conference in Washington she spoke with a representative from the FAA in charge of public outreach for airspace redesign and learned that

Louisville is one of the first places where the FAA has conducted public outreach during the study phase of an airspace project. This is partly because the CNF exists and partly because they had good cooperation from the airlines.

John Greathouse asked if there was a way to put some trees in open spaces around Crittenden Drive and 264. Bob Slattery replied that trees are not considered an effective noise barrier and this issue would require additional information and analysis.

Mike Zanone wanted to know if there was a plan to expand the clearing of trees for wildlife hazard mitigation into areas such as Audubon Park and Parkway Village. Brian Sinnwell replied that there are no plans for wildlife mitigation in those areas and explained that the airport works with a representative the U.S. Fish and Wildlife and the wildlife hazard mitigation plan applies mainly to airport property.

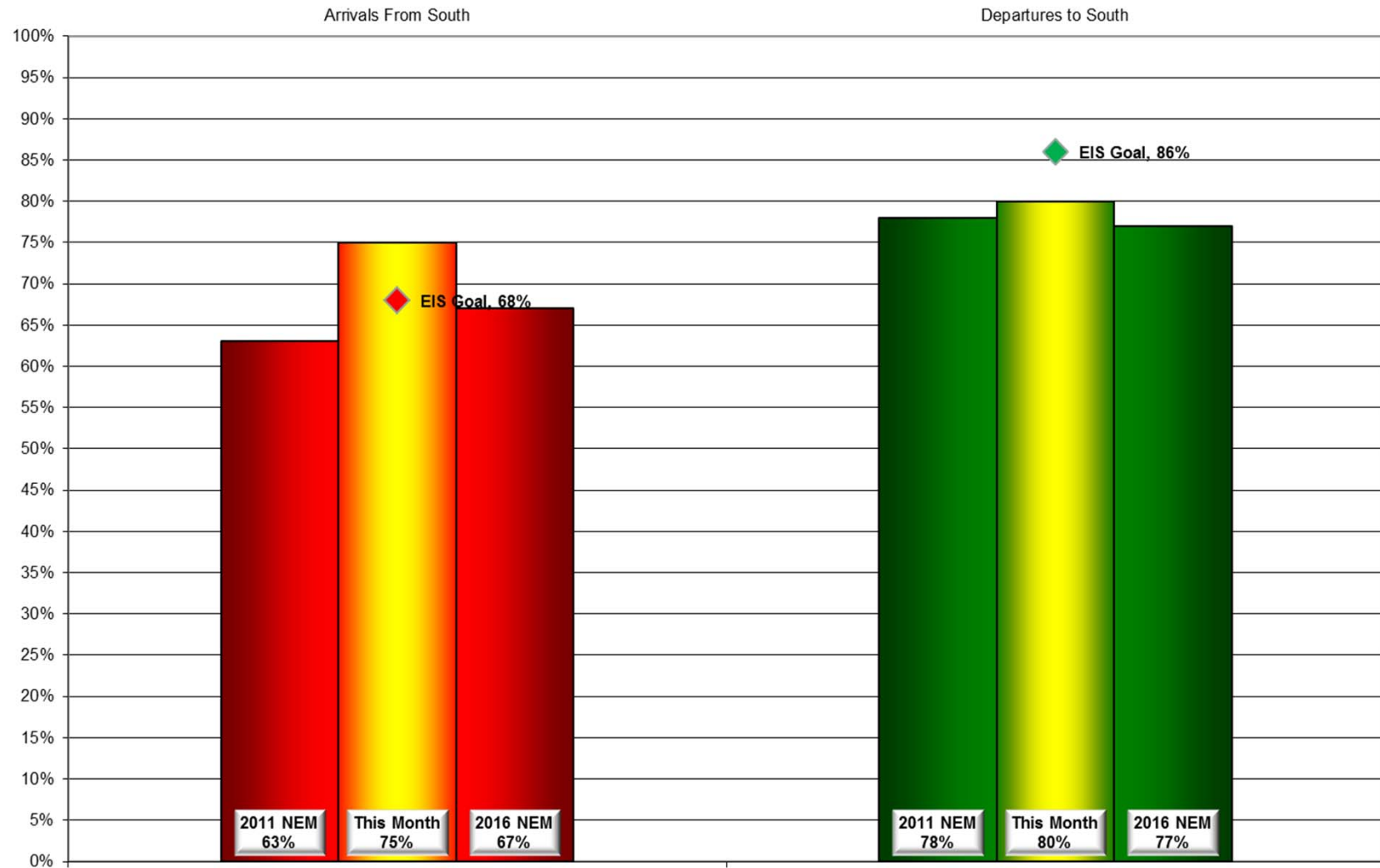
Guest Comments: Tom Denton noted that the cluster of comments on the February complaint map represents the area in Beechmont that is most greatly impacted by the early morning flights. He also wanted to know if there was a plan to level the area in the Northwest Quadrant. Brian Sinnwell told him there are no plans to level the area.

Announcements: DOT's Bureau of Transportation Statistics released its first National Transportation Noise Map which will track trends in aviation and highway noise in the U.S. The purpose of the noise map "is to facilitate the tracking of trends in transportation-related noise, by mode, and collectively for multiple transportation modes." A link to map was provided to the group.

Next Meeting: Monday, May 22, 2017 at 6 p.m.

Adjournment: A motion was made to adjourn the meeting at 6:50 p.m.

Monthly Contraflow May 1-31, 2017



Daily Runway Use Summary – May 2017

(from 10:00 PM date list in first column to 7:00 AM the following morning)

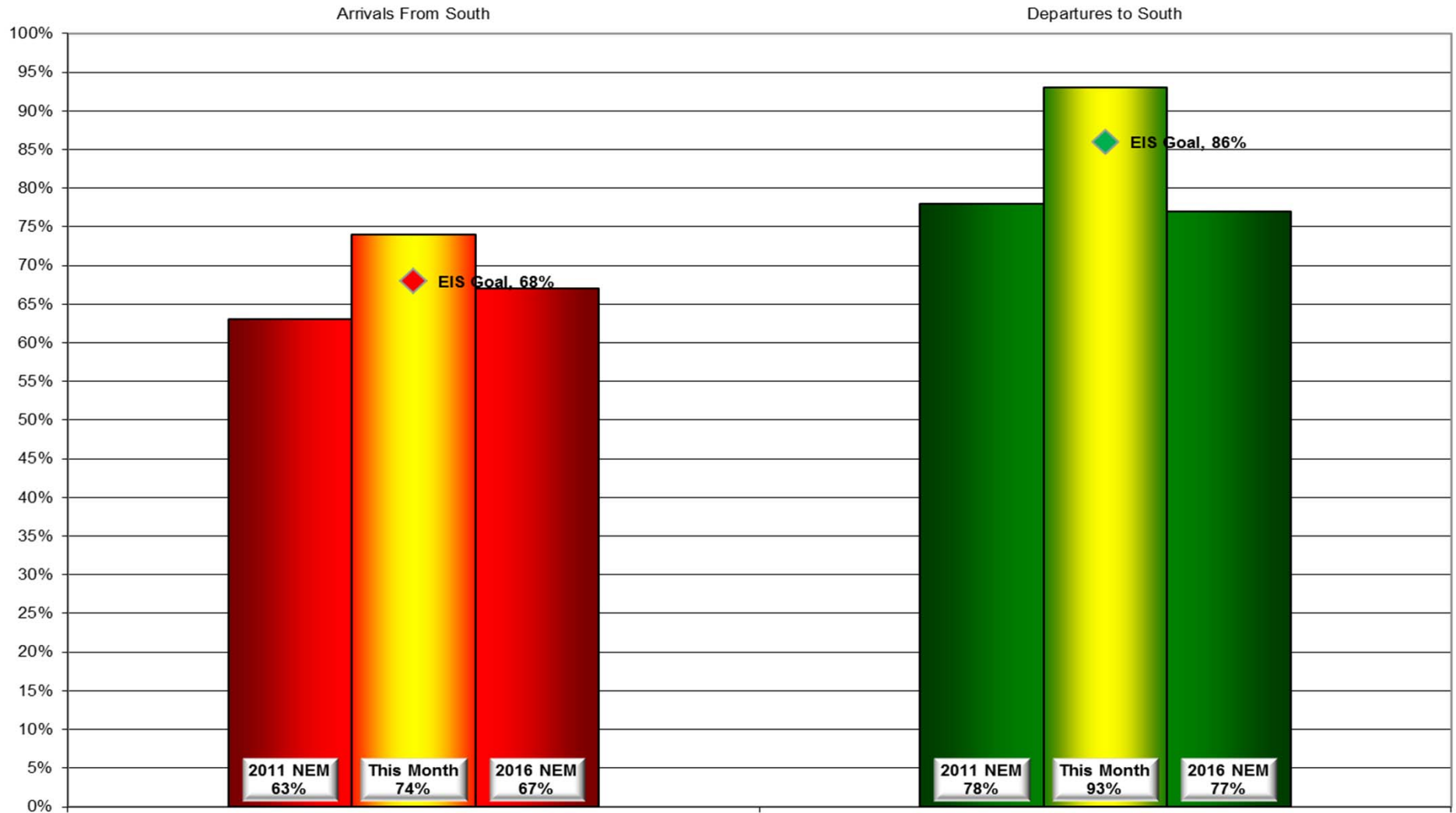
		% of all arrivals from the south										% of all departures to the south																																																																																																																																																																																																																																																																																																																																																																																																																																																																																																																																																																																																																																																																																																																																																																																																																																																																																																																																																																																																																																																																																																																																																																																																																																																																																																																														
Date	Day	* in	Runway #							Unknown	Notes /		** in	Runway #							Unknown	Notes /																																																																																																																																																																																																																																																																																																																																																																																																																																																																																																																																																																																																																																																																																																																																																																																																																																																																																																																																																																																																																																																																																																																																																																																																																																																																																																																				
		compliance	11	17L	17R	29	35L	35R	Use	Runway				compliance	11	17L	17R	29	35L	35R	Use			Runway																																																																																																																																																																																																																																																																																																																																																																																																																																																																																																																																																																																																																																																																																																																																																																																																																																																																																																																																																																																																																																																																																																																																																																																																																																																																																																																		
											Comments																																																																																																																																																																																																																																																																																																																																																																																																																																																																																																																																																																																																																																																																																																																																																																																																																																																																																																																																																																																																																																																																																																																																																																																																																																																																																																																															</

Preferred Flow

DATIS Reported Conditions Indicate
Support for Non-Preferred Flow

DATIS Reported Conditions Do Not Indicate
Support for Non-Preferred Flow

Monthly Contraflow June 1-30, 2017



Daily Runway Use Summary – June 2017

(from 10:00 PM date list in first column to 7:00 AM the following morning)

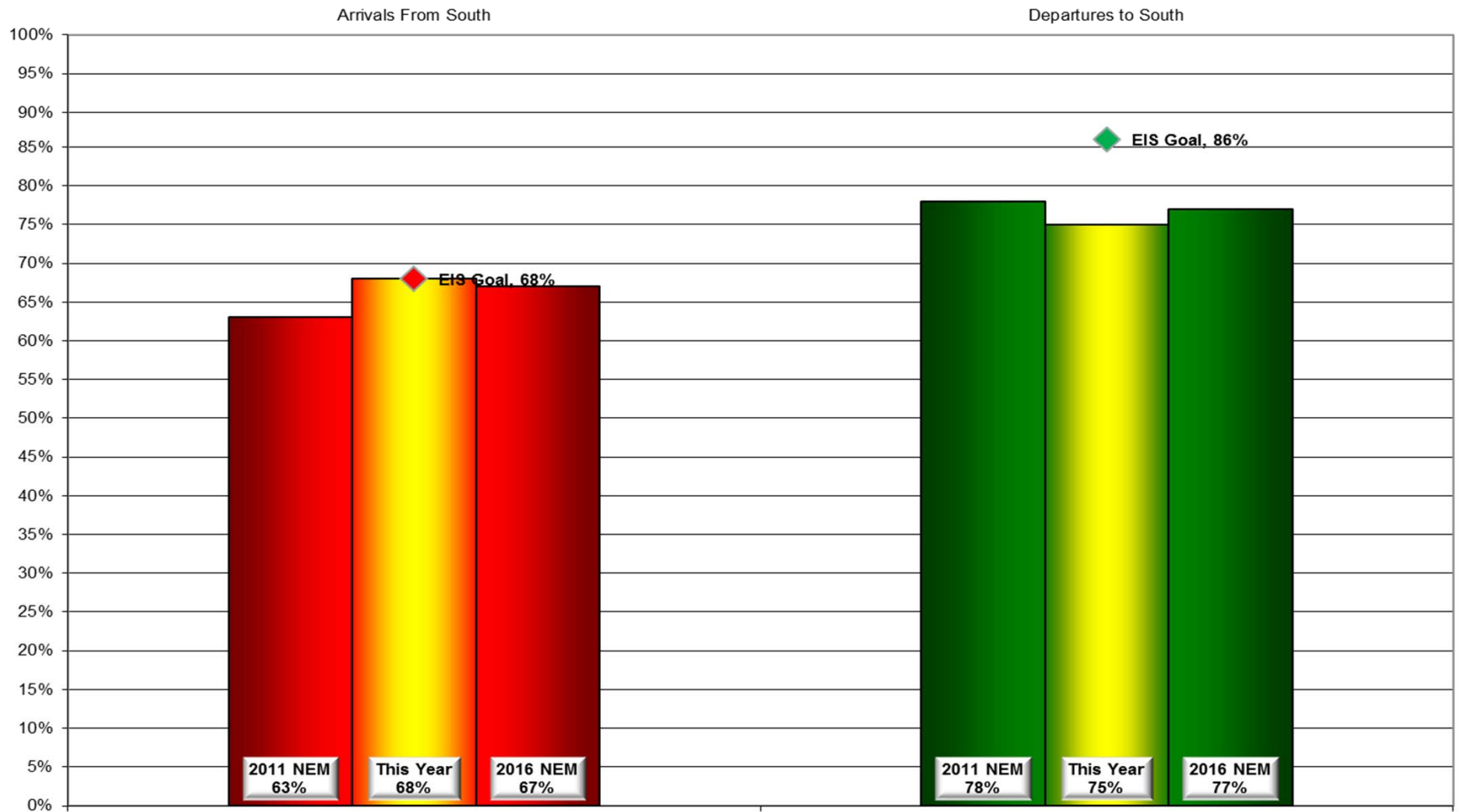
		% of all arrivals from the south										% of all departures to the south											
Date	Day	* in	Runway #						Unknown	Notes /		** in	Runway #						Unknown	Notes /			
		compliance	11	17L	17R	29	35L	35R	Use				Runway	compliance	11	17L	17R	29	35L			35R	Use
06/01/17	Thu	98%			1	1			61	37	0		88%			30	58			6	6	0	
06/02/17	Fri	92%			4	4			56	36	0		94%			40	54			1	5	0	
06/03/17	Sat																						
06/04/17	Sun																						
06/05/17	Mon	95%			4	1			60	35	0		91%			37	54			5	4	0	
06/06/17	Tue	95%			3	2			56	39	0		95%			33	62			4	1	0	
06/07/17	Wed	98%				2			59	39	0		93%			39	54			4	3	0	
06/08/17	Thu	98%			1	1			60	38	0		90%			34	56			5	5	0	
06/09/17	Fri	91%			7	2			53	38	0		96%			35	61			1	3	0	
06/10/17	Sat																						
06/11/17	Sun																						
06/12/17	Mon	98%			2				63	35	0		90%			35	55			6	4	0	
06/13/17	Tue	91%			6	3			53	38	0		91%			36	55			4	5	0	
06/14/17	Wed	2%			43	55				2	0	120-150@6-10knts	80%			35	45			14	6	0	330-160@5-21knts,g34,tsra
06/15/17	Thu	94%			4	2			53	41	0		92%			32	60			2	6	0	
06/16/17	Fri	96%				4			62	34	0		88%			28	60		1	2	9	0	
06/17/17	Sat																						
06/18/17	Sun																						
06/19/17	Mon	94%			2	4			56	38	0		93%			33	60			4	3	0	
06/20/17	Tue	97%			1	2			56	41	0		93%			34	59			2	5	0	
06/21/17	Wed	95%			4	1			56	39	0		96%			37	59			1	3	0	
06/22/17	Thu	0%			43	57					0	140-170@5-9knts	100%			39	61					0	
06/23/17	Fri	91%			4	5			65	26	0		94%			40	54			4	2	0	
06/24/17	Sat																						
06/25/17	Sun																						
06/26/17	Mon	99%			1				64	35	0		87%			36	51			8	5	0	
06/27/17	Tue	98%			1	1			56	42	0		89%			36	53			6	5	0	
06/28/17	Wed	0%			58	42					0	150-180@8knts	100%			41	59					0	
06/29/17	Thu	0%			42	58					0	180-190@8-10knts	100%			45	55					0	
06/30/17	Fri	0%			47	53					0	210-230@5-15knts,TSRA	100%			45	55					0	

Preferred Flow

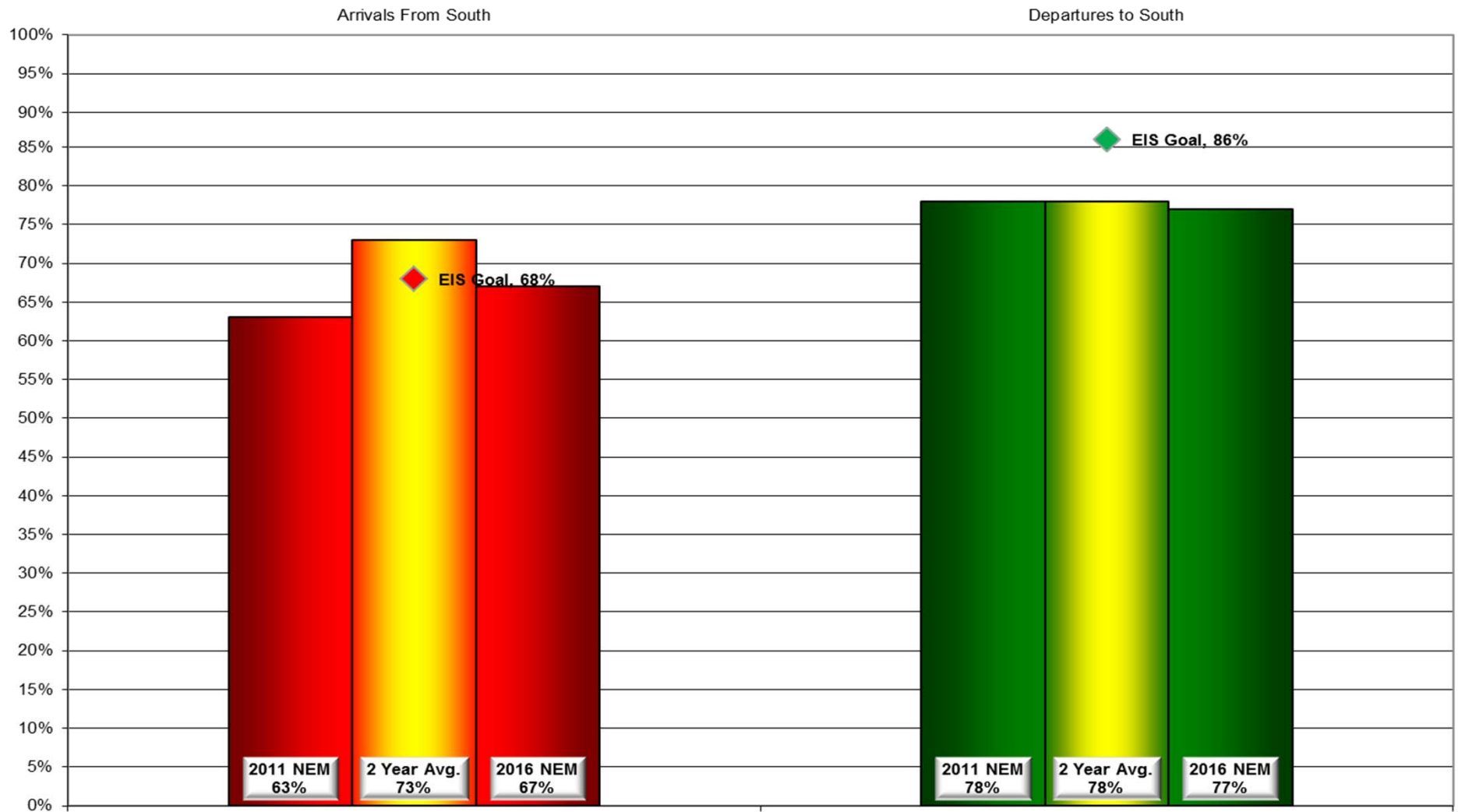
DATIS Reported Conditions Indicate
Support for Non-Preferred Flow

DATIS Reported Conditions Do Not Indicate
Support for Non-Preferred Flow

Contraflow This Year As of June 30, 2017



Contraflow 2 Year Average July 2015 - June 2017



Year-to-Year by Month Percent* Contraflow

Arrivals From the South (Goal 68%)										Departures to the South (Goal 86%)									
	2010	2011	2012	2013	2014	2015	2016	2017	Avg		2010	2011	2012	2013	2014	2015	2016	2017	Avg
Jan	94%	91%	62%	72%	51%	76%	69%	65%	73%	Jan	54%	71%	80%	65%	81%	76%	69%	61%	70%
Feb	90%	73%	69%	77%	72%	66%	80%	58%	73%	Feb	71%	63%	74%	78%	71%	76%	67%	77%	72%
Mar	80%	52%	61%	87%	60%	71%	63%	79%	69%	Mar	82%	72%	96%	77%	77%	66%	77%	62%	76%
Apr	57%	47%	78%	60%	67%	53%	86%	56%	63%	Apr	84%	83%	76%	89%	83%	77%	73%	80%	81%
May	56%	69%	72%	46%	60%	75%	62%	75%	64%	May	87%	85%	81%	85%	92%	80%	80%	80%	84%
Jun	66%	61%	79%	76%	75%	57%	79%	74%	71%	Jun	96%	93%	87%	80%	91%	91%	83%	93%	89%
Jul	61%	91%	62%	74%	79%	74%	59%		72%	Jul	90%	88%	92%	88%	85%	80%	91%		87%
Aug	59%	82%	49%	84%	61%	86%	76%		70%	Aug	92%	91%	91%	92%	92%	91%	90%		92%
Sep	70%	85%	55%	86%	85%	95%	88%		81%	Sep	73%	64%	92%	87%	86%	73%	93%		80%
Oct	80%	88%	62%	87%	75%	86%	81%		75%	Oct	78%	63%	78%	89%	79%	74%	81%		77%
Nov	85%	55%	84%	73%	78%	59%	74%		73%	Nov	77%	72%	81%	83%	62%	88%	77%		77%
Dec	67%	70%	64%	58%	78%	55%	75%		67%	Dec	78%	65%	67%	71%	68%	79%	62%		69%
Avg	72%	72%	66%	73%	70%	71%	74%	68%		Avg	80%	76%	83%	82%	81%	79%	79%	76%	

*Number is percentage of all operations between 10:00 PM - 7:00 AM

NOISE COMMENT REPORT



May 2017

Comments (SDF/LOU)

May 2017

Street	Zip Code	Time Received	Time	Airport	Disturbance Type	CNF Quad	Status	Operation or Comment Type ¹	Deviation Type ²	Comments
Budd Rd	47150	2017-05-03 17:40:00	2017-05-02 23:00:00	SDF	Too Much Noise	SI	Investigated	Standard	None	Aircraft jet engine noise has been very loud and getting worse over the last several months. UPS seems to be the loudest and between the 11:00 p.m. to about 5:30 a.m. time, over the New Albany Budd Road, High Water Road and Powder House Road in general areas. I have to put in ear buds and play music just to drown out most but not all of the noise. I would not be able to hear my fire or smoke alarm if it were to go off. There are other surrounding houses that have said it is very loud for them. One said she was blow drying her hair and it was so loud she thought the jet was going to crash. My lack of sleep is affecting my job. UPS also starts up about 3:30 p.m. every two minutes for about another two or so hours. I've tried many different ear plugs from the store with no help. I have lived on several Air Force bases and never had any noise like this. Please look into this and change the takeoff route so we can get some sleep in New Albany (west end areas) If you need some kind of idea of the noise level I have audio and video examples. I would be grateful for any help in this matter.

1. **Standard:** Indicates the “Most Preferred” runway configuration was being utilized at the time of the comment.
Non Standard: Indicates that a “Lesser Preferred” runway configuration was being utilized at the time of the comment.
QHP: QuieterHome Program

2. This column is used to indicate the conditions which most likely necessitated a deviation from the standard procedures.

Comments (SDF/LOU)

May 2017

Street	Zip Code	Time Received	Time	Airport	Disturbance Type	CNF Quad	Status	Operation or Comment Type ¹	Deviation Type ²	Comments
Budd Rd	47150	2017-05-07 19:53:00	2017-05-07 09:00:00	SDF	Too Much Noise	SI	Investigated	Non-Standard	Weather	To whom it may concern: This is my second complaint for aircraft noise in the Budd Road, High Water Road, and Powder House Road area. I have not received any contact back from you on the last complaint. The aircraft still take off during quiet hours and taking off over our houses 200' to 400' above. It rumbles the ground and it wakes us up. They are doing this in the early hours 12:00 a.m. to 5:00 a.m. every two minutes or so. Today, Sunday, 5/7/17, the aircraft were taking off all day starting at about 9:00 a.m. and going until about 6:00 p.m. We can't even have dinner without the roar of the engines. Please look into changing your route or all night flying hours over this area. You are not being a good neighbor. I would have been fined and arrested by now if I had disturbed the peace as much. Please do not break our town's noise ordinances or FAA regulations. I would really like to get a good night's rest again.
Hill Top Ct	40214	2017-05-19 01:01:00	2017-05-19 01:01:00	SDF	Noise At Wrong Time	NW	Investigated	Non-Standard	Weather	I wanted to tell you that it isn't a night of wind or bad weather and the planes are right over my head!

1. **Standard:** Indicates the "Most Preferred" runway configuration was being utilized at the time of the comment.
Non Standard: Indicates that a "Lesser Preferred" runway configuration was being utilized at the time of the comment.
QHP: QuieterHome Program

2. This column is used to indicate the conditions which most likely necessitated a deviation from the standard procedures.

Comments (SDF/LOU)

May 2017

Street	Zip Code	Time Received	Time	Airport	Disturbance Type	CNF Quad	Status	Operation or Comment Type ¹	Deviation Type ²	Comments
Boulevard Napoleon	40205	2017-05-20 10:37:00	2017-05-22 08:46:14	SDF	Vibrations	NE	Investigated	Non-Standard	Weather	For several hours, there has been a constant humming and the windows of our house have been shaking. I tried calling the airport -- customer service phone number rang for over 20 minutes and no one ever answered. This airport -- is not only ugly -- but it is a noise nuisance to our community. I hear your ads on WUOL trying to claim credit for significant amounts of economic activity, and yet you can't even answer your damn phones and clearly you don't care about the noise nuisance. I live miles away -- in the Belknap neighborhood -- and continuously have to deal with this non-sense. I think it is past time Skip Miller retired and the entire LRAA board was sacked because it clearly doesn't know how to manage an airport.
S. 2nd ST	40214	2017-05-31 16:50:00	2017-05-31 16:35:00	SDF	Noise At Wrong Time	SW	Investigated	Non-Standard	Weather	In the last fifteen minutes or so I have watched 4 UPS airplanes go right over our house, right over it. As a matter of fact they don't even start a good descent I can still see he is so close.
S. 2nd ST	40214	2017-05-31 17:04:00	2017-05-31 17:04:00	SDF	Noise At Wrong Time	SW	Investigated	Non-Standard	Weather	Make sure you call me in the morning. I am tired of these planes.
S. 2nd ST	40214	2017-05-31 17:05:00	2017-05-31 17:05:00	SDF	Noise At Wrong Time	SW	Investigated	Non-Standard	Weather	I am really glad that you get to go home and enjoy a beautiful day without planes over your house. At my house they are one right after the other.
							Received	LRAA	7	


1. **Standard:** Indicates the "Most Preferred" runway configuration was being utilized at the time of the comment.
Non Standard: Indicates that a "Lesser Preferred" runway configuration was being utilized at the time of the comment.
QHP: QuieterHome Program

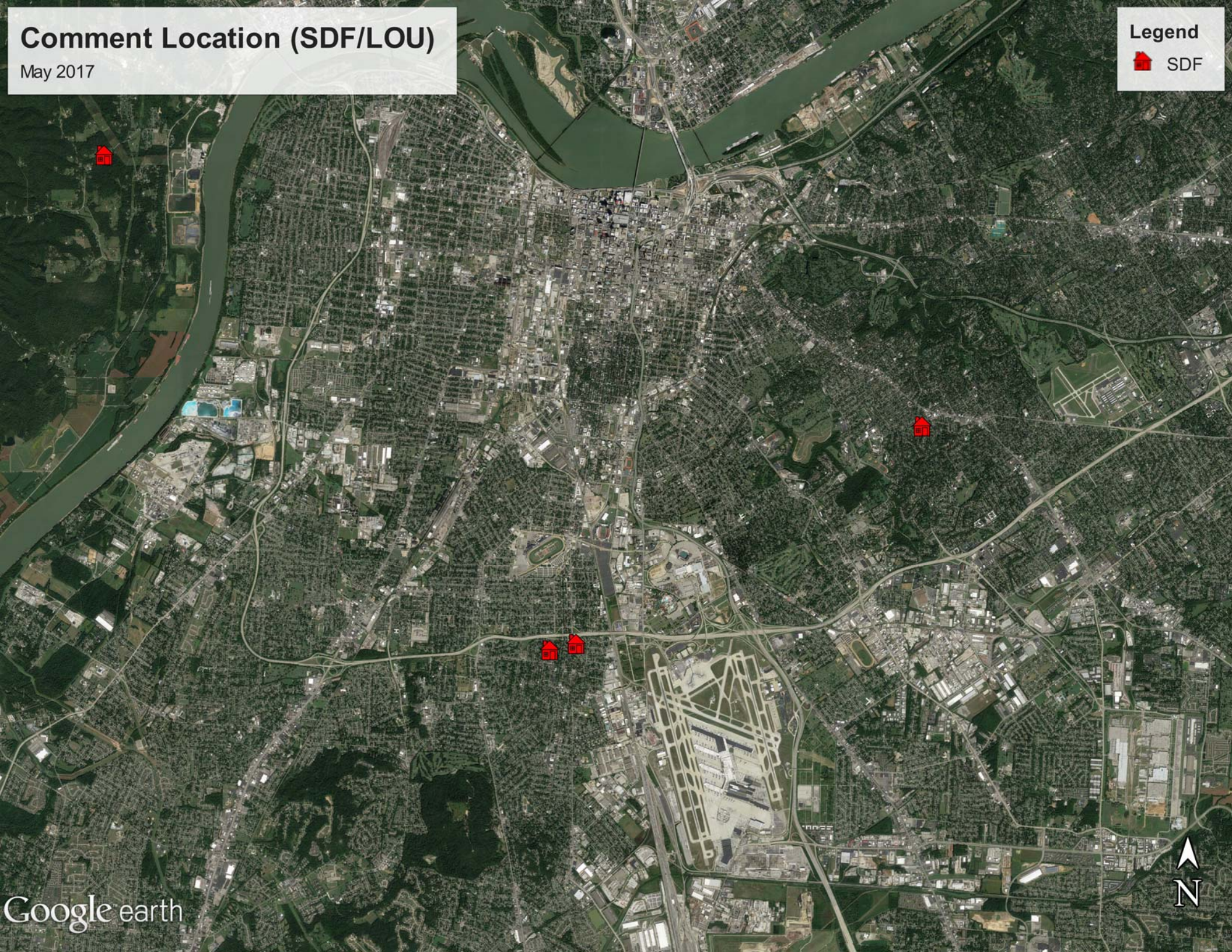
2. This column is used to indicate the conditions which most likely necessitated a deviation from the standard procedures.

Comment Location (SDF/LOU)

May 2017

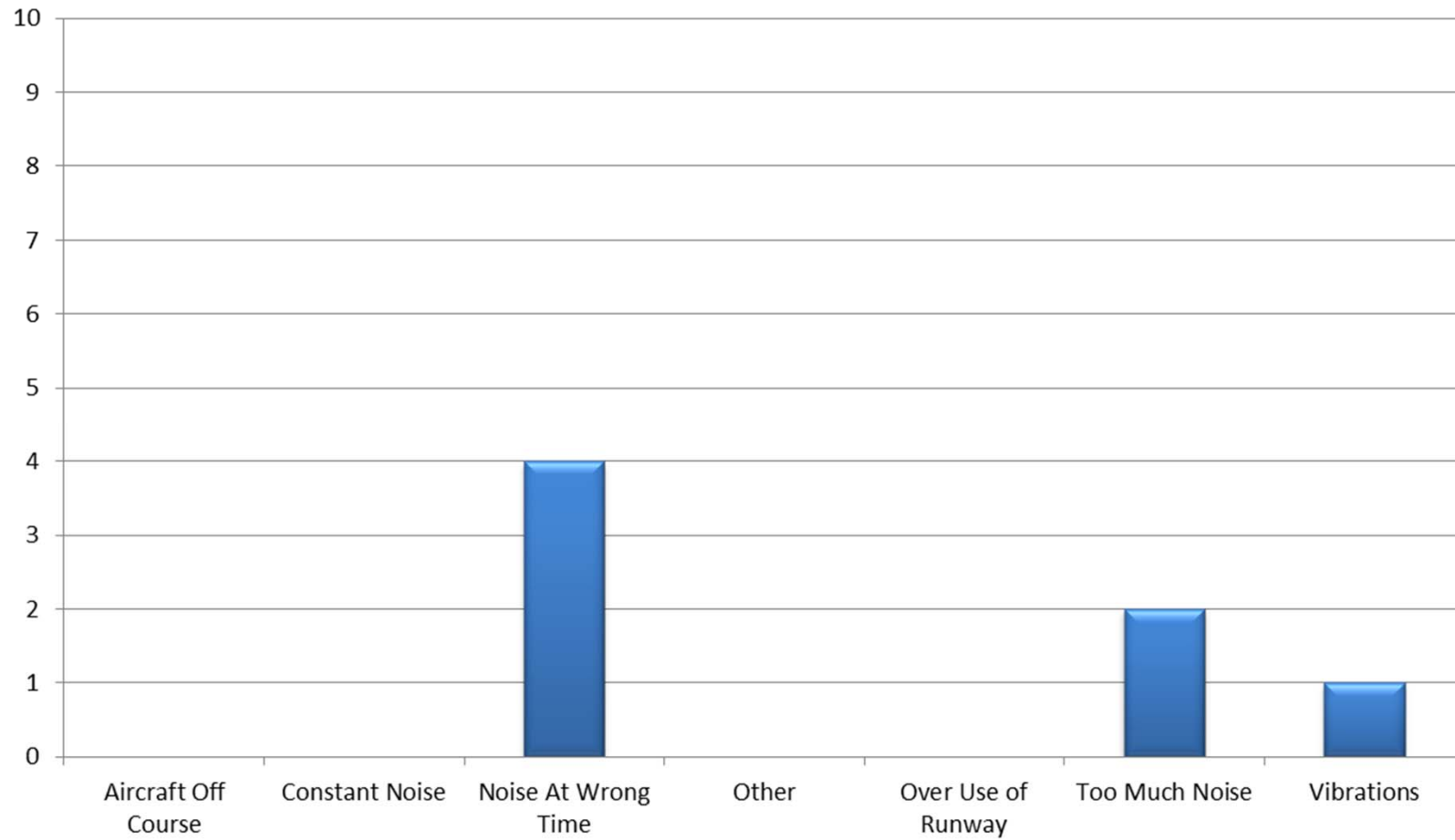
Legend

 SDF



Comment Type* (SDF and LOU)

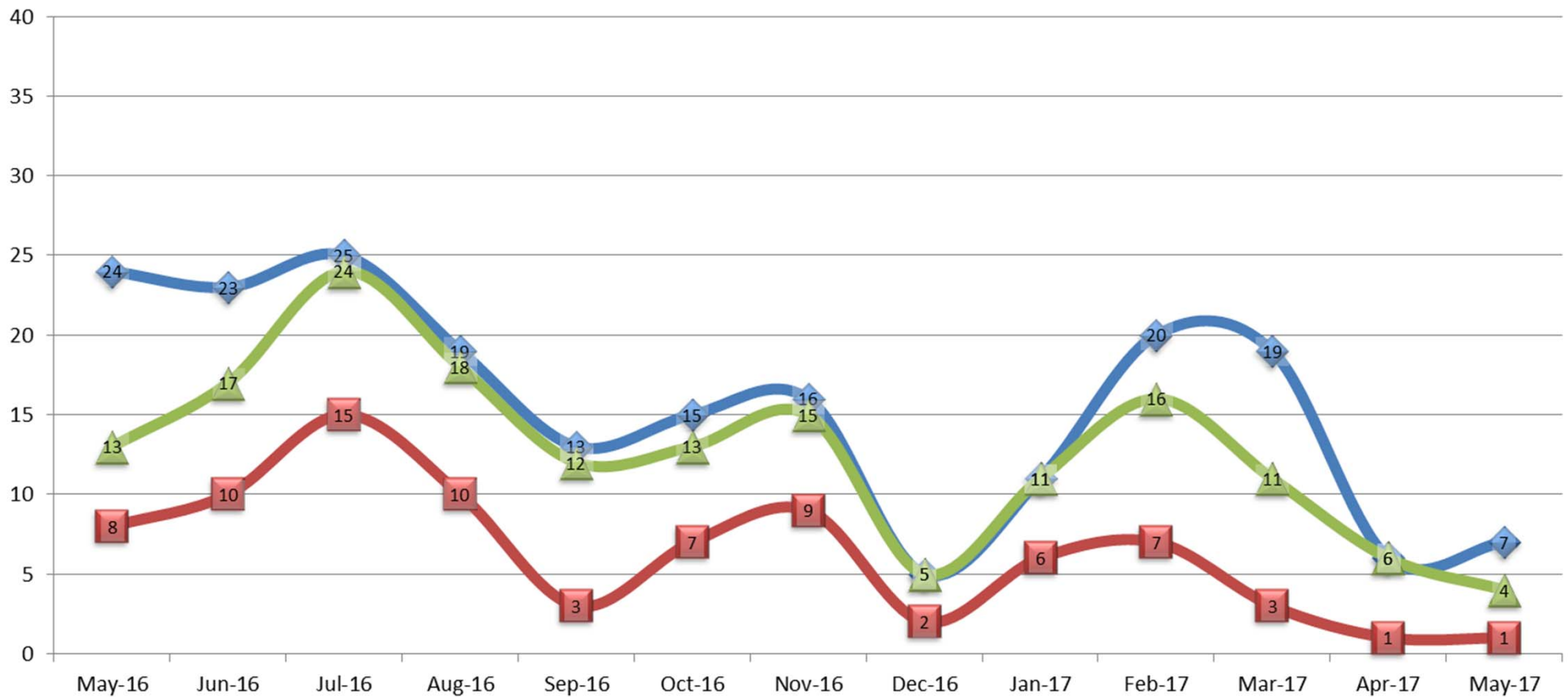
May 2017



New Address/Comments per Month (SDF and LOU)

May 2017

◆ Total Comments ■ New Callers ▲ Individual Callers



NOISE COMMENT REPORT



June 2017

Comments (SDF/LOU)

June 2017

Street	Zip Code	Time Received	Time	Airport	Disturbance Type	CNF Quad	Status	Operation or Comment Type ¹	Deviation Type ²	Comments
Dublin Cir	40165	2017-06-02 16:29:00	2017-06-02 16:29:00	SDF	Aircraft Off Course	SW	Investigated	Standard	None	We are approximately 5 miles out on south bound departures. The climb out noise is bad during the night. If the south bound departures would hold heading for another 2 minutes before turning east would help greatly. On the same departure route if they were turning west there would not be a problem for us. Thanks for your help.
Budd Rd	47150	2017-06-07 16:43:00	2017-06-07 16:00:00	SDF	Too Much Noise	SI	Investigated	Non-Standard	Weather	This is my third complaint about aircraft noise. I've had no one email me back. The noise over Budd Road and High Water is way too noisy in the early AM time 1,2,3 and 4 a.m. One jet after another over and over. It also starts at 4 p.m. I can't eat dinner or watch TV without the roar of jet engines. One more time please stop, change your route. You're going over and beside my house every time. My next complaint will be to the regional FCC and New Albany Indiana's local government. Yes these are mostly UPS aircraft. Please have some respect for our neighborhood and my job. It makes it hard to work with no sleep due to your aircraft noise.

1. **Standard:** Indicates the "Most Preferred" runway configuration was being utilized at the time of the comment.
Non Standard: Indicates that a "Lesser Preferred" runway configuration was being utilized at the time of the comment.
QHP: QuieterHome Program

2. This column is used to indicate the conditions which most likely necessitated a deviation from the standard procedures.

Comments (SDF/LOU)

June 2017

Street	Zip Code	Time Received	Time	Airport	Disturbance Type	CNF Quad	Status	Operation or Comment Type ¹	Deviation Type ²	Comments
McCoy Way	40205	2017-06-09 11:20:00	2017-06-09 09:00:00	LOU	Over Use of Runway	NE	Investigated	Standard	None	<p>I am calling to voice a noise complaint. I have lived in this neighborhood for 30 years now. For the past year we have had successive repeat planes just circling doing touch and go's. There goes another one right now. From about 9:00 until now we have had the same couple of planes. One in particular is a dual engine that is extremely loud. I have had leg surgery and I can't even get quiet and rest. I understand you have a flight school. I am not trying to take any business from him. But at the same time this is getting a little out of hand we have never had this much traffic. This is a pretty respectable neighborhood. There is a golf course you could go out over, there are other runways, yet they keep coming over Seneca Gardens and all these nice houses and it is the same planes just doing circles. There is so much airspace that they practice in. And to keep doing this for so many hours is just unacceptable. I don't know, I have complained once before and it seemed to slow up. Now it is right back to the way it was. I would hate to take it further.</p>

1. **Standard:** Indicates the "Most Preferred" runway configuration was being utilized at the time of the comment.
Non Standard: Indicates that a "Lesser Preferred" runway configuration was being utilized at the time of the comment.
QHP: QuieterHome Program

2. This column is used to indicate the conditions which most likely necessitated a deviation from the standard procedures.

Comments (SDF/LOU)

June 2017

Street	Zip Code	Time Received	Time	Airport	Disturbance Type	CNF Quad	Status	Operation or Comment Type ¹	Deviation Type ²	Comments
McCoy Way	40205	2017-06-09 12:31:00	2017-06-09 09:00:00	LOU	Over Use of Runway	NE	Investigated	Standard	None	<p>This is a resident over on McCoy Way over here behind Bowman Field. We have had excessive air traffic nonstop all day. It is the same planes over and over. They switched out from the same two to another two different ones. They are just circling and doing touch and go's. I understand that there needs to be a certain amount of practice going on for training school. But at the same time this is a nice residential neighborhood. There are other takeoff and landing strips. They could go out over the park. This has been going on since 9:00 a.m. this morning and it is now after 12:00 p.m. I have a plane about to go over the top of the house now and he is not even following the path. There are no houses built in line with that airstrip that lines up with Gladstone for good reason. So you all have a buffer and somewhere to go but they are turning beforehand and turning right over these nice residential houses. The past year it has gotten excessively worse. We have lived in this house for 30 years and this past year has been the worse. Here comes another plane now, I called earlier to express a concern. I have had leg surgery and cannot even get up to go outside and give you the tail number of these planes but I called earlier.</p>
Eastern Pkwy	40217	2017-06-19 12:53:00	2017-06-19 12:53:00	SDF	Other	NE	Investigated	Standard	None	<p>I would appreciate a call back regarding a particular property and how frequently the UPS and other jets fly over. My daughter rented an apartment and will have to move out if this does not get any better.</p>

1. **Standard:** Indicates the "Most Preferred" runway configuration was being utilized at the time of the comment.
Non Standard: Indicates that a "Lesser Preferred" runway configuration was being utilized at the time of the comment.
QHP: QuieterHome Program

2. This column is used to indicate the conditions which most likely necessitated a deviation from the standard procedures.

Comments (SDF/LOU)



June 2017

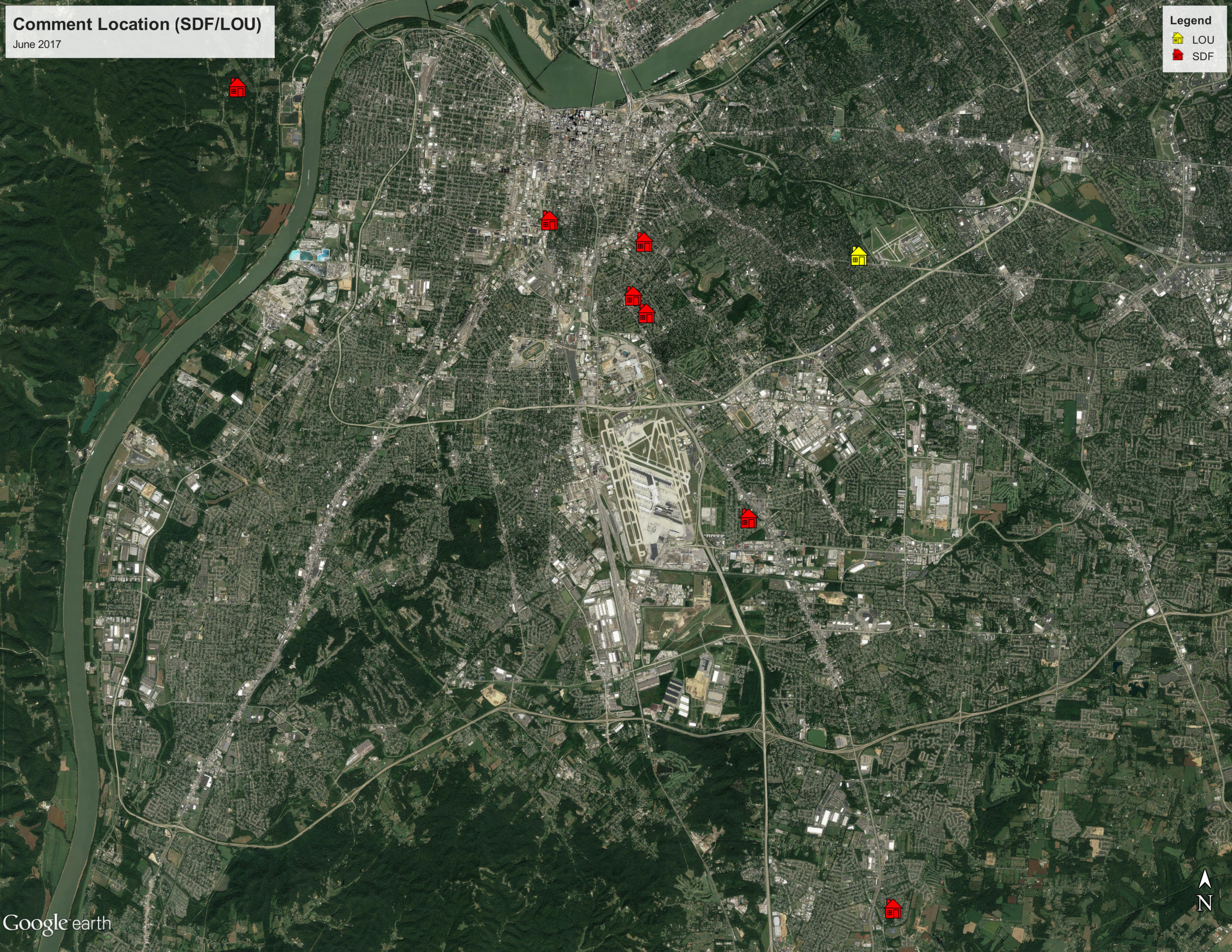
Street	Zip Code	Time Received	Time	Airport	Disturbance Type	CNF Quad	Status	Operation or Comment Type ¹	Deviation Type ²	Comments
Melford Ave	40217	2017-06-22 13:41:00	2017-06-22 13:41:00	SDF	Other	NE	Investigated	Standard	None	My wife and I just bought a house in Parkway Village near the airport. During the buying process, we were informed that we may qualify to have work done on our house to mitigate noise issues. I wasn't sure where to look, but I found your email on the Noise Compatibility Program Website. What do we need to do to determine if we are eligible for these benefits?
Goss Ave	40217	2017-06-23 11:37:00	2017-06-23 11:37:00	SDF	Other	NE	Investigated	Standard	None	When I went to flylouisville.com I kept coming up with a blank page. I did want to ask you about a particular property. The address of that property is on Goss Avenue. I know planes are going in that general direction but I am just curious as to how close they come to it.
Hood Rd	40213	2017-06-25 17:19:00	2017-06-25 17:19:00	SDF	Too Much Noise	SE	Investigated	Non-Standard	Ops	As the crow flies we are less than a mile from UPS. The planes taking off in the middle of the night, one after another, every night are so loud that we can never open our windows not to mention the air fuel debris that accumulates on everything. Vehicles, pool, home, etc. could not be too good for one's health, have had neighbors who have passed from rare forms of cancer, related maybe. Any plans for this area to be bought out?
W. Ormsby	40203	2017-06-28 23:19:00	2017-06-28 23:19:00	SDF	Noise At Wrong Time	NW	Investigated	Non-Standard	Weather	We are getting an awful lot of planes these days. Tonight for example they are going overhead. It seems to me that we are seeing an awful lot of planes on cool nights when there is not much southwest wind if any. So if you could take a look at that and give me a call. All this past week with the cool weather we have been getting a lot of airplanes.
							Received	LRAA	9	

1. **Standard:** Indicates the "Most Preferred" runway configuration was being utilized at the time of the comment.
Non Standard: Indicates that a "Lesser Preferred" runway configuration was being utilized at the time of the comment.
QHP: QuieterHome Program

2. This column is used to indicate the conditions which most likely necessitated a deviation from the standard procedures.

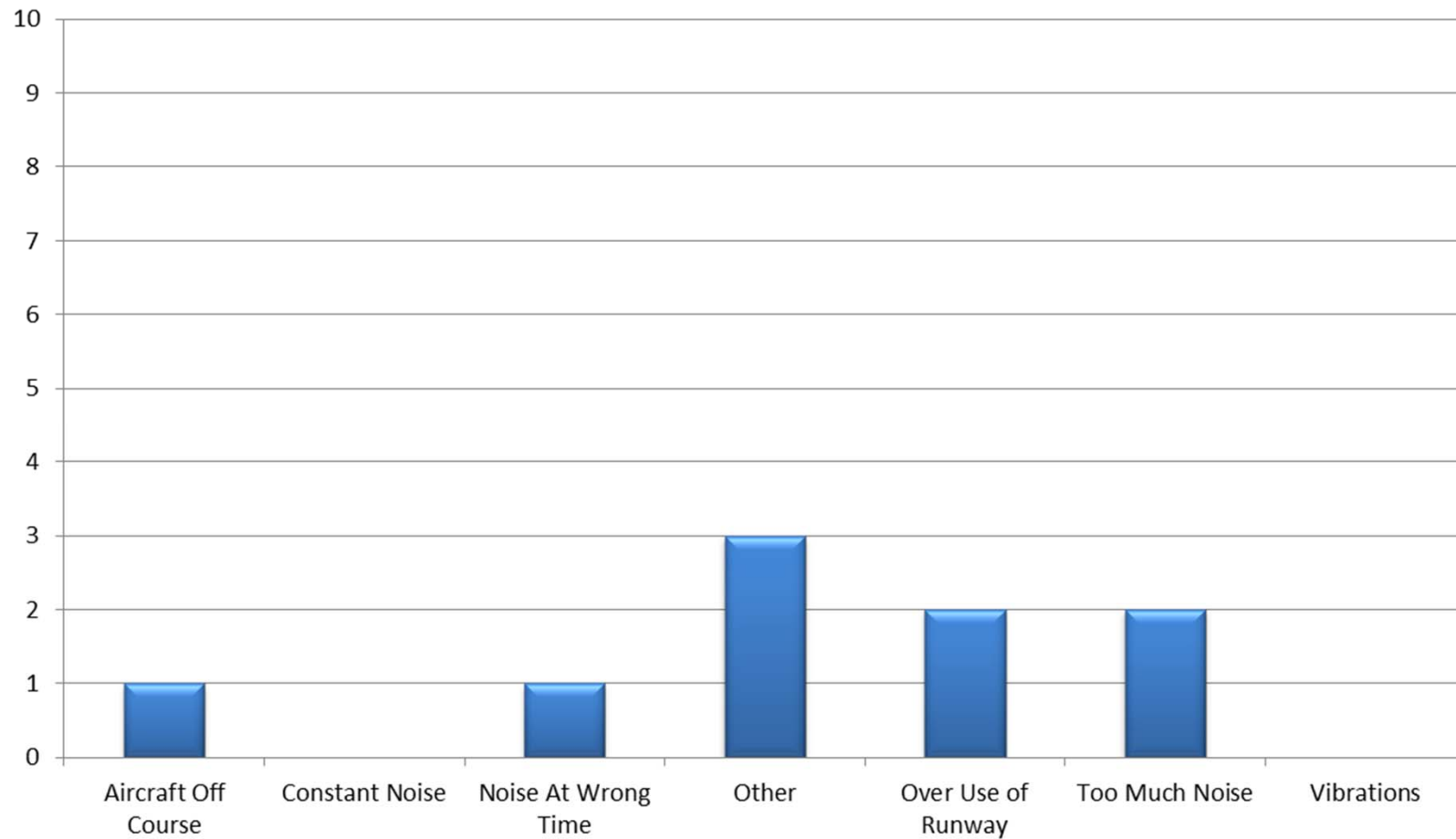
Legend

	LOU
	SDF



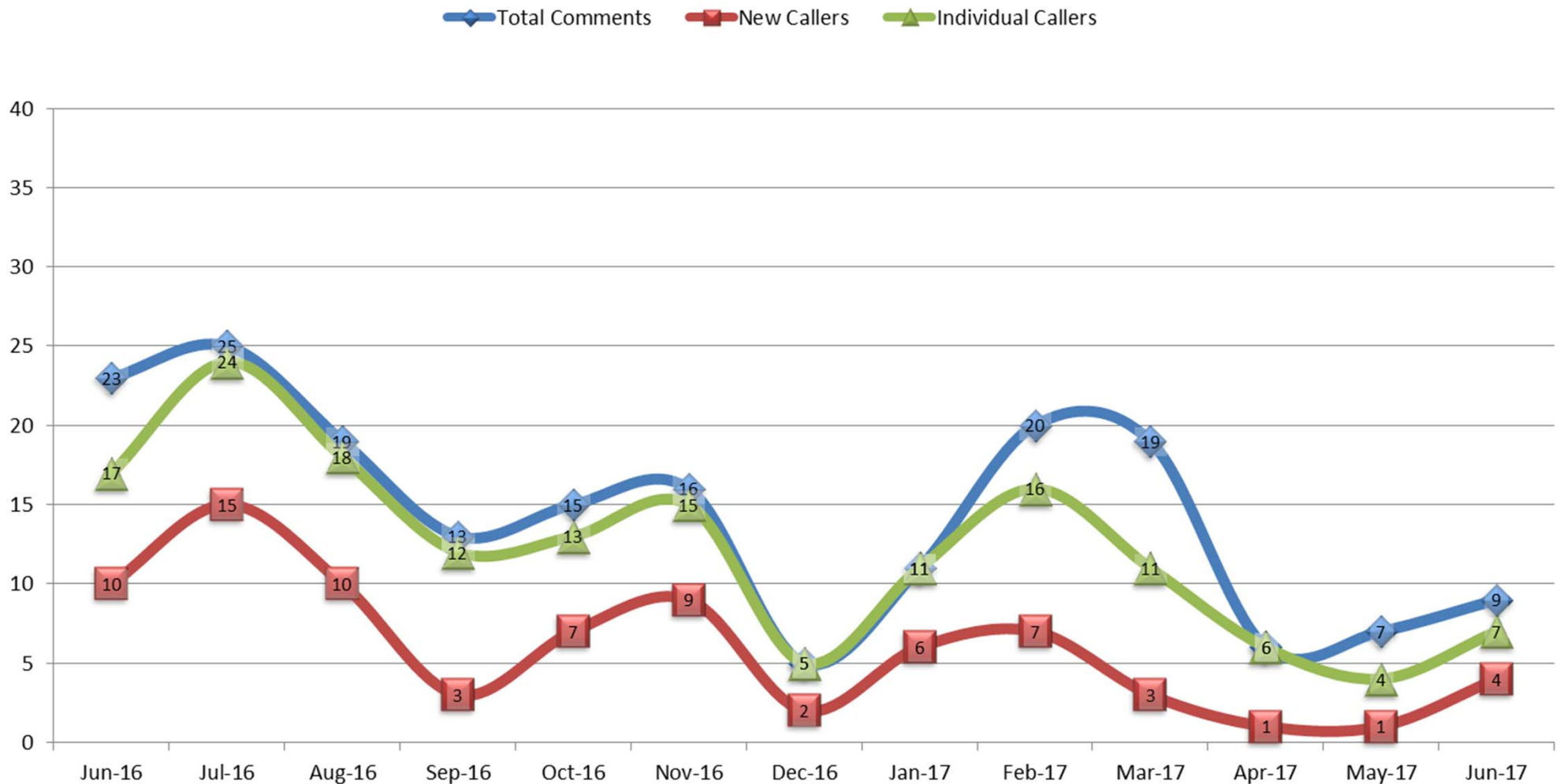
Comment Type* (SDF and LOU)

June 2017



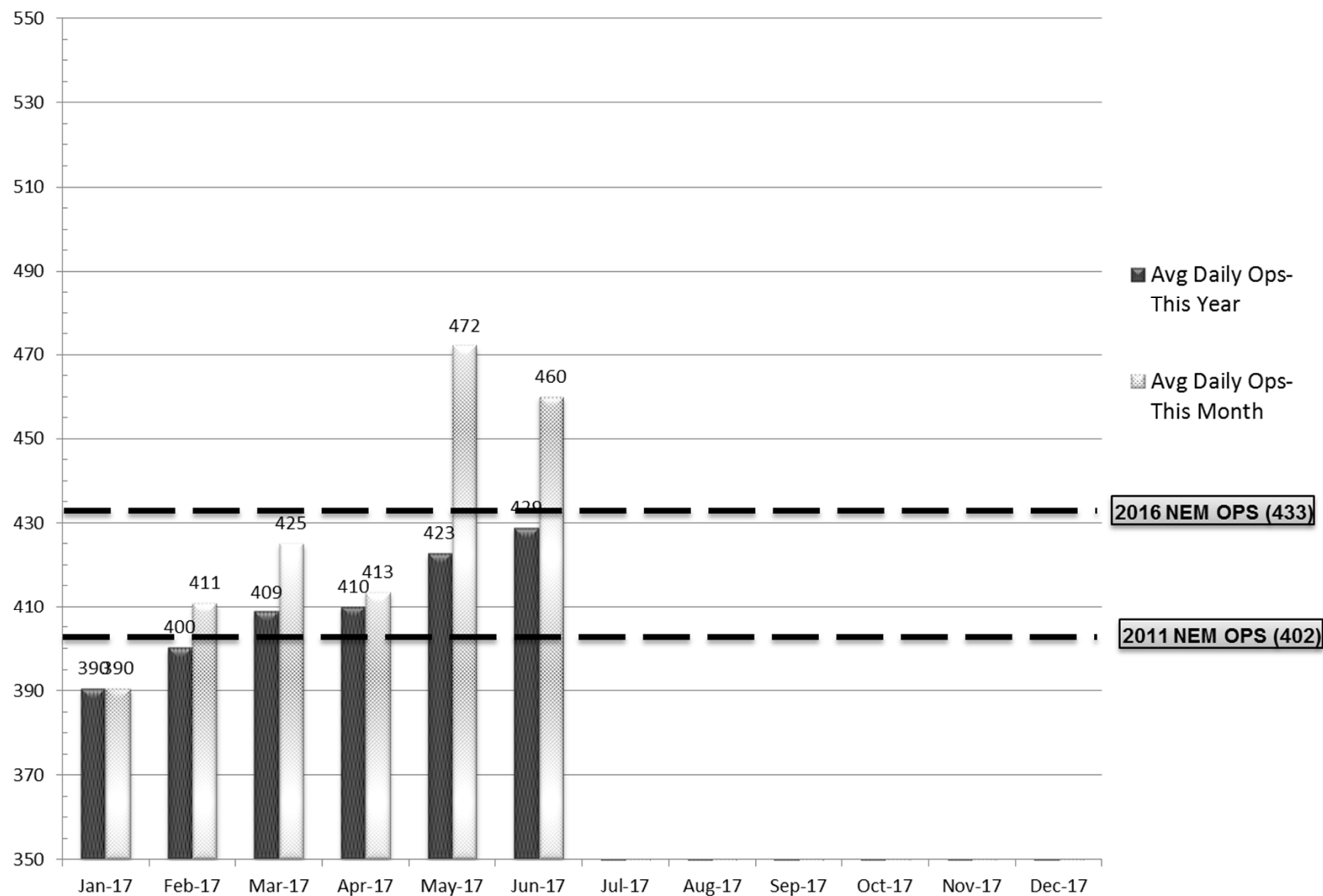
New Address/Comments per Month (SDF and LOU)

June 2017



Operations (SDF)

As of June 30, 2017



Source: Louisville <http://www.flylouisville.com/regional-airport-authority/reports-and-statistics/>

Daily Runway Use Uncorrected (SDF) May 2017

[illegible]

Daily Runway Use (SDF)

Tower Comments May 2017

Day	Date	Time	Comment
Mon	1-May-17	1600-2130	Log shows south for this time period.
Tue	2-May-17		
Wed	3-May-17	0730-0900	Wind 0310
Thu	4-May-17		
Fri	5-May-17		
Sat	6-May-17	1300-1530	Wind 3205 wet runways
Sun	7-May-17	0000-1030	Wind 3309
Mon	8-May-17		
Tue	9-May-17		
Wed	10-May-17	2200-0000	Wind 2211
Thu	11-May-17	0000-0230	Unable to change during UPS inbound
Thu	11-May-17	0930-1230	Wind 2008 wet runways
Fri	12-May-17	1800-2130	Wind 0208
Sat	13-May-17		
Sun	14-May-17		
Mon	15-May-17		
Tue	16-May-17	0930-1200	Taxiway closures impacting taxi routes
Wed	17-May-17		
Thu	18-May-17		
Fri	19-May-17		
Sat	20-May-17		
Sun	21-May-17		
Mon	22-May-17		
Tue	23-May-17	0930-1230	Wind 1409
Wed	24-May-17	0930-1000	Late RWY change due to traffic volume
Thu	25-May-17	2000-2130	Wind 3117
Fri	26-May-17		
Sat	27-May-17		
Sun	28-May-17		
Mon	29-May-17		
Tue	30-May-17	1130-1230	Wind 1912
Tue	30-May-17	2000-2130	Wind 3212
Wed	31-May-17	2000-2130	Wind 3112

Daily Runway Use Uncorrected (SDF) June 2017

[illegible]

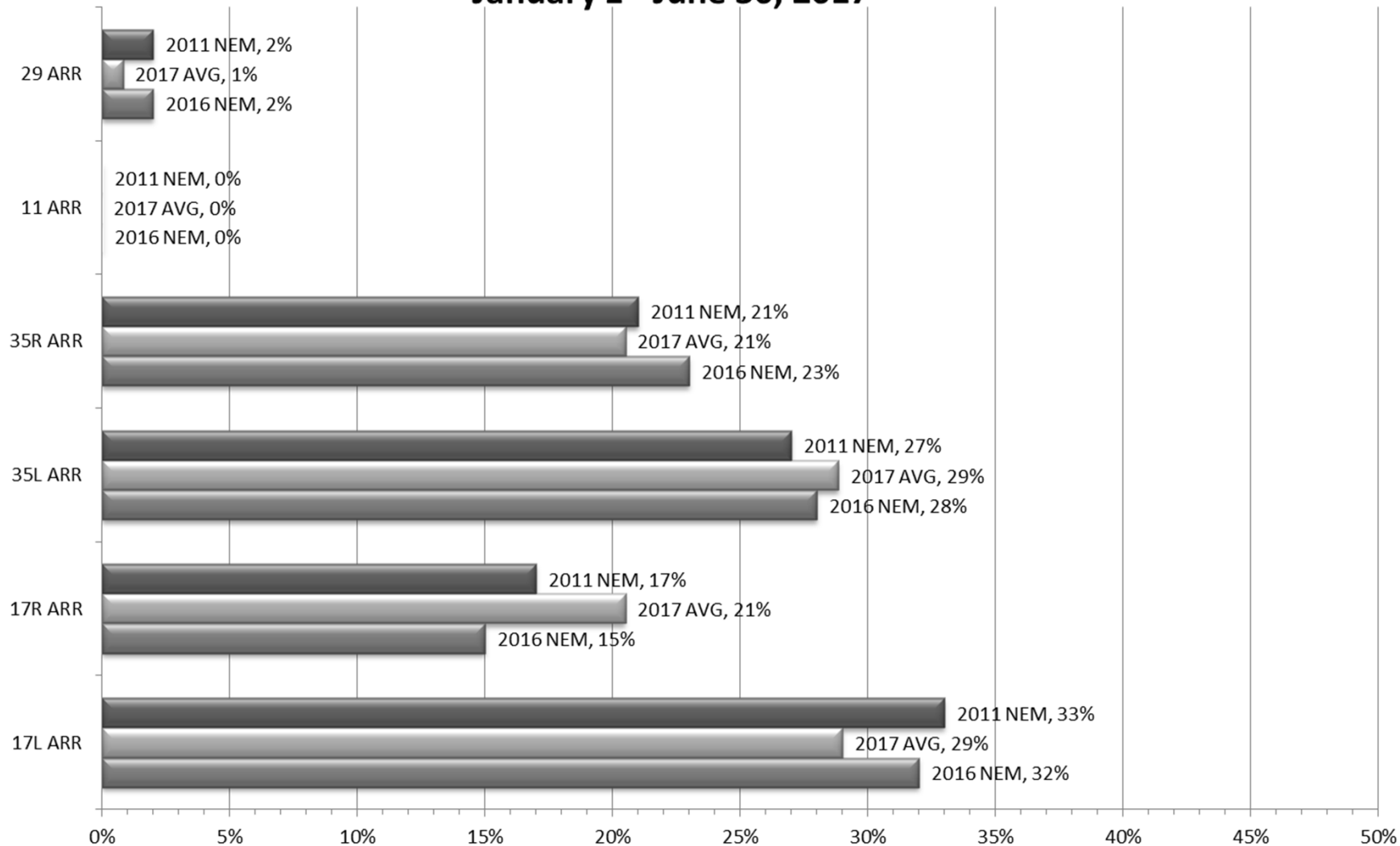
Daily Runway Use (SDF)

Tower Comments June 2017

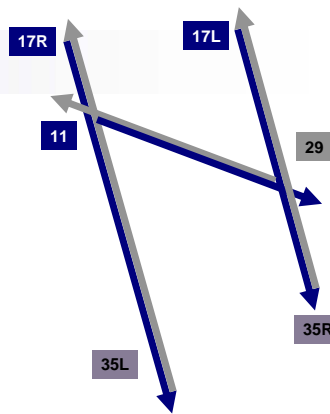
Day	Date	Time	Comment
Thu	1-Jun-17	1300-1600	Wind 3010
Thu	1-Jun-17	1900-2130	Wind 3010
Fri	2-Jun-17	0930-1230	Valid reason not documented
Sat	3-Jun-17		
Sun	4-Jun-17		
Mon	5-Jun-17		
Tue	6-Jun-17		
Wed	7-Jun-17		
Thu	8-Jun-17		
Fri	9-Jun-17	0930-1230	Valid reason not documented
Sat	10-Jun-17		
Sun	11-Jun-17		
Mon	12-Jun-17		
Tue	13-Jun-17		
Wed	14-Jun-17	0930-1230	Taxiway closures affecting routes to 35R
Thu	15-Jun-17		
Fri	16-Jun-17	0930-1230	RWY closure and R3704 activity
Sat	17-Jun-17		
Sun	18-Jun-17		
Mon	19-Jun-17	0930-1230	Radar outage impacting south operation.
Tue	20-Jun-17	1830-2130	Wind 3209, later 2910
Wed	21-Jun-17	0930-1230	Wind forecast 2210G16
Thu	22-Jun-17		
Fri	23-Jun-17		
Sat	24-Jun-17		
Sun	25-Jun-17		
Mon	26-Jun-17		
Tue	27-Jun-17	1600-2130	Wind 3211
Wed	28-Jun-17		
Thu	29-Jun-17		
Fri	30-Jun-17	0930-1030	Wind 2113

Runway Use (SDF Arrivals)

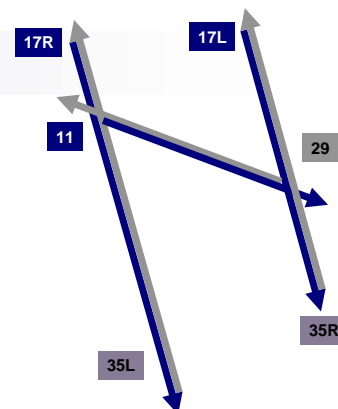
NEM vs. Actual January 1 - June 30, 2017



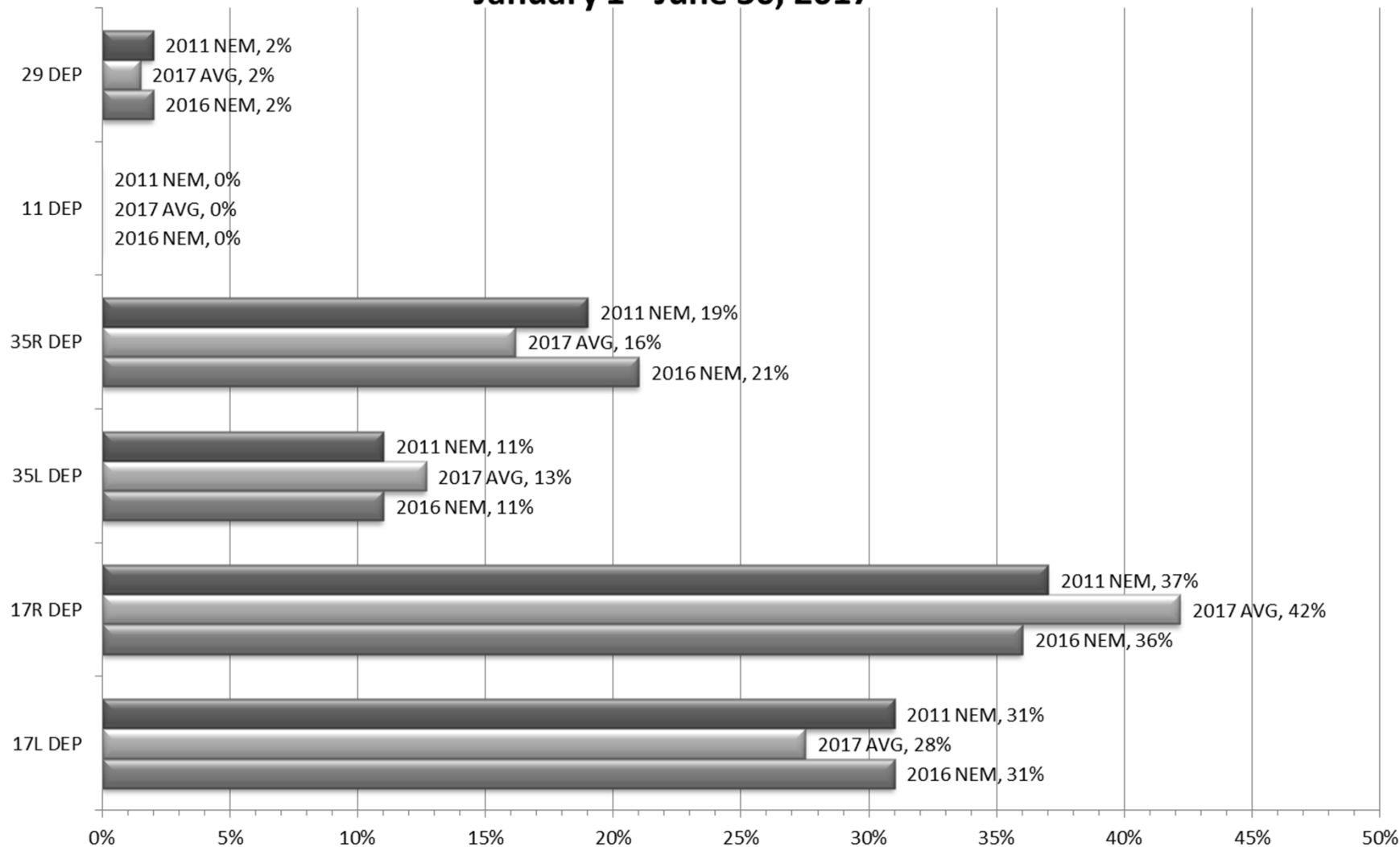
Source: Louisville International Airport
Aircraft Flight Tracking and Noise Management System (AFTNMS)

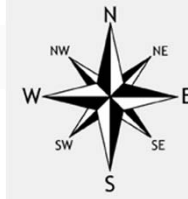


Runway Use (SDF Departures)



NEM vs. Actual
January 1 - June 30, 2017



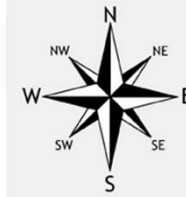


Runway Use 0930L-1230L_(SDF)

As of June 30, 2017

	Arrival Percentage by Runway								Departure Percentage by Runway							
	11	17L	17R	29	35L	35R	% From South	Arrival Count	11	17L	17R	29	35L	35R	% To North	Departure Count
Jul-15	0	12	25	0	42	21	63	827	0	17	21	0	15	47	62	403
Aug-15	0	15	25	0	38	22	60	712	0	20	19	0	15	46	61	365
Sep-15	0	7	24	0	36	33	69	796	0	11	20	0	13	56	69	407
Oct-15	0	19	31	0	26	24	50	784	0	20	25	0	2	53	55	411
Nov-15	0	20	25	11	22	22	44	676	0	15	26	12	5	42	47	380
Dec-15	0	26	19	0	37	18	55	1082	0	24	25	0	5	46	51	449
Jan-16	0	26	22	2	30	20	50	650	0	26	22	3	11	38	49	312
Feb-16	0	17	12	0	49	22	71	738	1	13	14	2	19	51	70	314
Mar-16	0	33	37	0	21	9	30	796	0	31	29	4	9	27	36	396
Apr-16	0	27	17	8	31	17	48	712	1	30	17	6	15	31	46	356
May-16	0	17	25	0	37	21	58	821	0	21	19	4	25	31	56	394
Jun-16	0	9	12	0	49	30	79	816	0	14	9	4	24	49	73	392
Jul-16	0	17	30	1	32	20	52	723	0	17	27	2	14	40	54	394
Aug-16	0	14	46	0	21	19	40	845	0	18	35	1	13	33	46	404
Sep-16	0	14	27	0	37	22	59	856	0	14	22	0	9	55	64	399
Oct-16	0	16	35	0	24	25	49	803	0	19	25	1	0	55	55	393
Nov-16	0	27	31	0	24	18	42	912	0	26	30	0	1	43	44	394
Dec-16	0	9	6	3	52	30	82	1090	0	9	11	3	10	67	77	429
Jan-17	0	17	22	6	32	23	55	871	0	15	17	5	6	57	63	365
Feb-17	0	21	27	0	28	24	52	815	0	23	28	0	3	46	49	363
Mar-17	0	25	16	0	35	24	59	943	0	23	23	0	11	43	54	395
Apr-17	0	16	49	1	22	12	34	836	1	19	38	5	10	27	37	397
May-17	0	28	20	0	30	22	52	1027	0	29	16	0	13	42	55	460
Jun-17	0	29	28	0	16	27	43	960	0	24	34	1	10	31	41	435
Monthly Avg.	0	19	25	1	32	22	54		0	20	23	2	11	44	55	

Source: Louisville International Airport
Aircraft Flight Tracking and Noise Management System (AFTNMS)



Gate Compliance by Runway

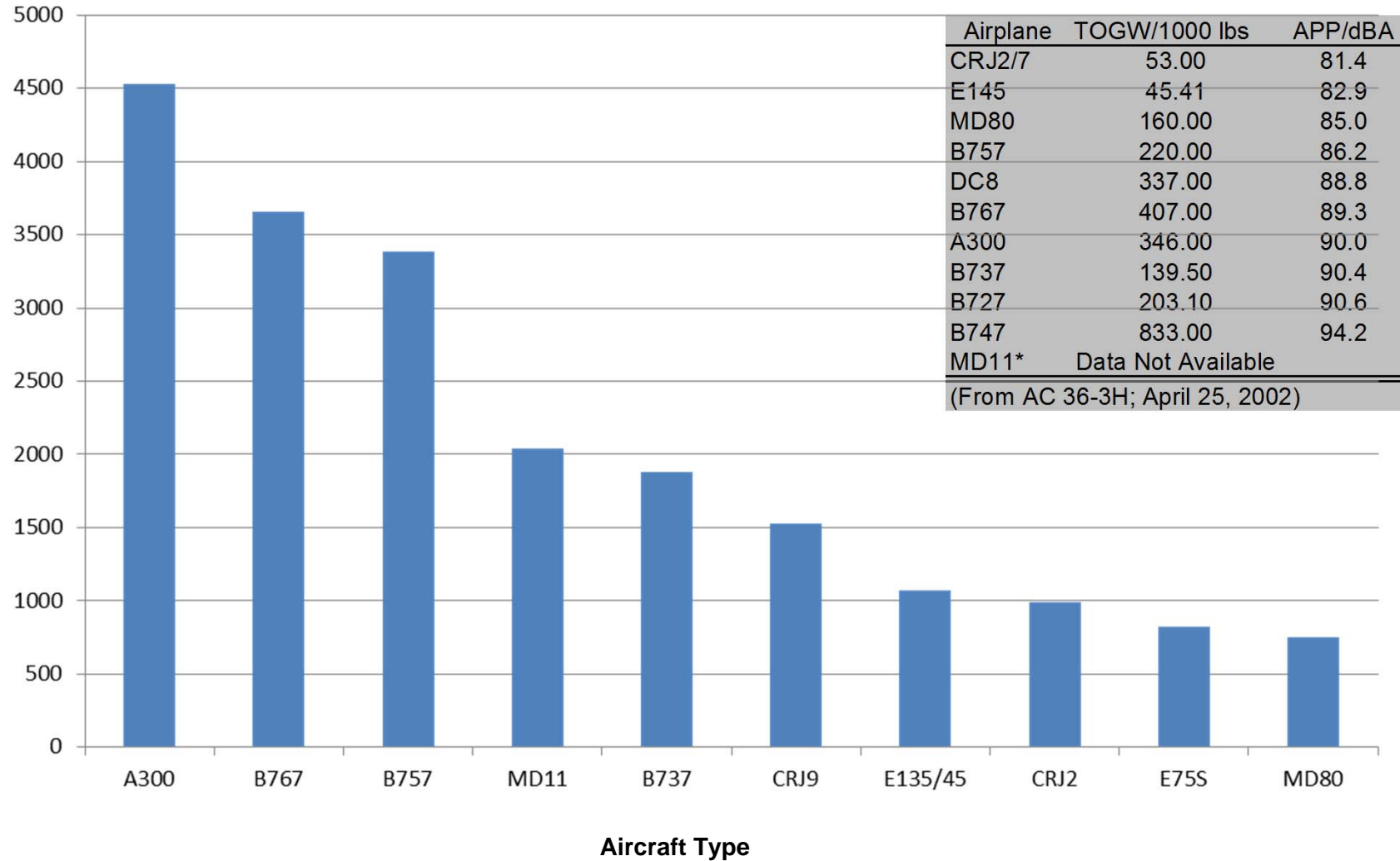
As of June 30, 2017

	ARRIVALS Percent Compliant					Departure Percent Compliant				
Month	17L	17R	35L	35R	ARR AVG	17L	17R	35L	35R	DEP AVG
Jul-15	86%	96%	88%	85%	89%	73%	86%	71%	87%	79%
Aug-15	81%	90%	82%	82%	84%	77%	88%	78%	88%	83%
Sep-15	79%	86%	84%	83%	83%	78%	88%	77%	91%	84%
Oct-15	82%	90%	88%	85%	86%	71%	88%	66%	86%	78%
Nov-16	82%	93%	87%	86%	87%	80%	88%	75%	87%	83%
Dec-16	89%	97%	93%	94%	93%	75%	90%	83%	90%	85%
Jan-16	83%	94%	89%	88%	89%	74%	90%	63%	83%	78%
Feb-16	80%	94%	91%	91%	89%	85%	89%	75%	83%	83%
Mar-16	85%	95%	89%	88%	89%	70%	87%	73%	85%	79%
Apr-16	80%	90%	86%	87%	86%	83%	83%	69%	82%	79%
May-16	82%	93%	86%	87%	87%	82%	87%	65%	88%	81%
Jun-16	77%	91%	85%	85%	85%	87%	88%	75%	85%	84%
Jul-16	84%	92%	88%	91%	89%	82%	88%	61%	88%	80%
Aug-16	85%	94%	87%	88%	89%	85%	88%	72%	89%	84%
Sep-16	80%	91%	89%	89%	87%	84%	90%	61%	88%	81%
Oct-16	82%	92%	86%	86%	87%	82%	90%	74%	90%	84%
Nov-16	84%	94%	90%	86%	89%	78%	89%	70%	88%	81%
Dec-16	89%	94%	92%	92%	92%	80%	87%	74%	80%	80%
Jan-17	88%	96%	93%	92%	92%	66%	91%	78%	84%	80%
Feb-17	87%	95%	91%	88%	90%	72%	92%	81%	87%	83%
Mar-17	87%	96%	90%	89%	91%	70%	89%	72%	88%	80%
Apr-17	86%	94%	87%	92%	90%	69%	86%	76%	85%	79%
May-17	86%	90%	90%	89%	89%	72%	90%	67%	84%	78%
Jun-17	87%	87%	87%	88%	87%	79%	91%	69%	87%	82%
24 Month Avg.					88%					81%

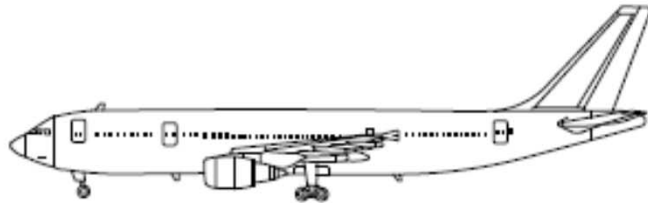
Source: Louisville International Airport
Aircraft Flight Tracking and Noise Management System (AFTNMS)

Operations by Aircraft Type (SDF) Only Top 10 Aircraft Types Shown

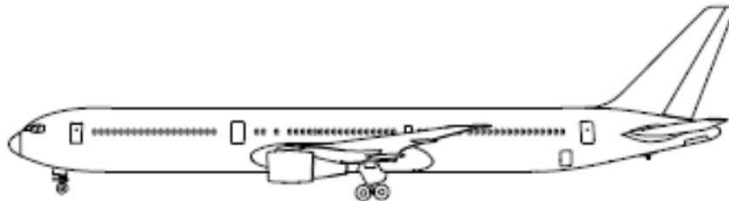
May / June 2017



Sample Aircraft Types (SDF)



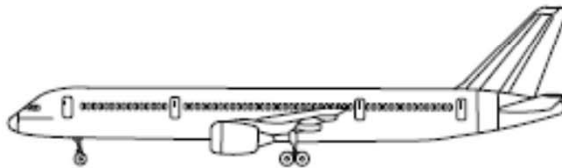
A300



B767



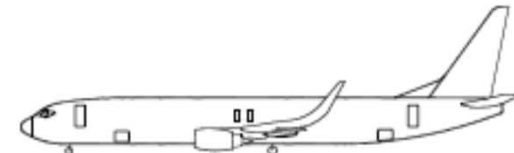
E135/45



B757



MD11



B737



CRJ2



E170



MD80



CRJ9