

Community Noise Forum
Monday, June 9, 2014
Agenda

- I. Call to order: 6:00PM
- II. Minutes of March 24, 2014.
- III. AAAE Meeting Report
- IV. Part 150 NCP
 - A. Update: Noise Insulation Program
 - B. Contraflow Exceptions
- V. Current Noise Concerns
 - A. Noise Concerns/Complaints
 - B. Runway Utilization
 - C. Construction and Maintenance Activity
- VI. Announcements
- VII. Guest Comments
- VIII.. Next Meeting: Monday, July 28, 2014
- IX. Adjournment:

COMMUNITY NOISE FORUM (CNF)
Monday, March 24, 2014

Members

John Sistarenik, ANA
Pete Levermore, Airline Affairs
Bob Slattery, LRAA
Mary Rose Evans, LRAA Board
Brian Sinnwell, LRAA
Ken Dietz, UofL

Verna Goatley, Metro
Mike Zanone, Northwest
Chris Younkin, FAA
Jason Schmidt, KYANG
Pat Gould, Northeast
John Greathouse, Southwest

Guests

Dorn Crawford, Audubon Pkwy.
Shane Smith, SACC
Nydia Regnier, Schnitzelberg
Joe Billy, Southgate

The meeting was called to order at 6:00 p.m. by John Sistarenik. The CNF operated as a committee of the whole in January, therefore the November meeting minutes were reviewed and approved. The January minutes were also approved at this time.

John introduced Chris Younkin with the FAA as the newest member of the CNF.

Election of officers for Chair and Vice Chair were held. John Sistarenik was re-elected as Chair with a nomination from Mike Zanone and seconded by Pete Levermore. Pete Levermore was re-elected as Vice Chair with a nomination from Mary Rose Evans and seconded by Verna Goatley. John and Pete will serve as Chair and Vice-Chair, respectively, for one year.

Part 150 NCP:

A. Updates:

Phase 3A-1: Sound insulation for 22 families. Construction began on January 6th and the contractor is substantially complete.

Phase 4A: Sound insulation for 50 families was awarded at the November board meeting. Final measurements were completed in January. Construction is anticipated to occur in the spring.

Phase 5: A contract to provide Sound Insulation for 85 families was awarded at the January board meeting.

Phase 4B: Sound insulation for 71 families was awarded at the February board meeting.

Phase 6: Sound Insulation for 60 families. The project was advertised on March 9th. Phase 6 is anticipated to be awarded at the April Board meeting.

To date, 179 families have received sound insulation.

- B. Contraflow Exceptions:** Contraflow for January, 51% for arrivals from the south and 81% for departures to the south. In February, arrivals from the south were 72% and departures to the south were 71%. For CY-2014 the arrivals are averaging 61% and the departures are averaging 76%. A daily summary for January and February 2014 is contained in the handout. A monthly summary going back 8 years is also included in the handout.

Current Noise Concerns:

- A. Report on Noise Concerns/Complaints:** We received a total of 17 comments in January, 6 were comments received at the QHP project office and 11 were received by the LRAA. In February we received a total of 30 comments, 8 were received at the QHP project office and 22 were received by the LRAA.
- B. Runway Utilization:** Runway utilization percentages for January and February are contained in the handout. Daily runway utilization and comments from the Air Traffic Control Tower for January and February are also included in the handout.
- C. Construction and Maintenance Activity:** Brian Sinnwell reported that the Taxiway "A" project is coming up this spring and will start after Derby. At certain times during the construction period, TW "A" will be closed during the months of June, July & August during daytime hours.

Announcements: Mike Zanone asked about a public meeting regarding Runway 11/29. Brian Sinnwell explained that the meeting is being held on April 3rd regarding an EMASS bed which is going to be installed to prevent aircraft from running off the runway.

Guest Comments: Shane Smith wanted to know if the QHP will be responsible if the home becomes noisy again after being sound insulated. Bob Slattery told him there is a warranty period, but after that, the homeowner is responsible for the upkeep of their home. Shane wanted to know if any thought had been given to prorating homes in lower noise level areas such as 64 or 63 DNL. Bob explained that the cutoff was DNL 65 and the only thing similar he was aware of is the proposed legislation to give tax credits for homeowners in the 60-65 DNL contour that install sound insulation on their own.

Joe Billy lives in the Southgate neighborhood and wants to know why they are not included in the QHP. Bob invited him to stay after the meeting to discuss.

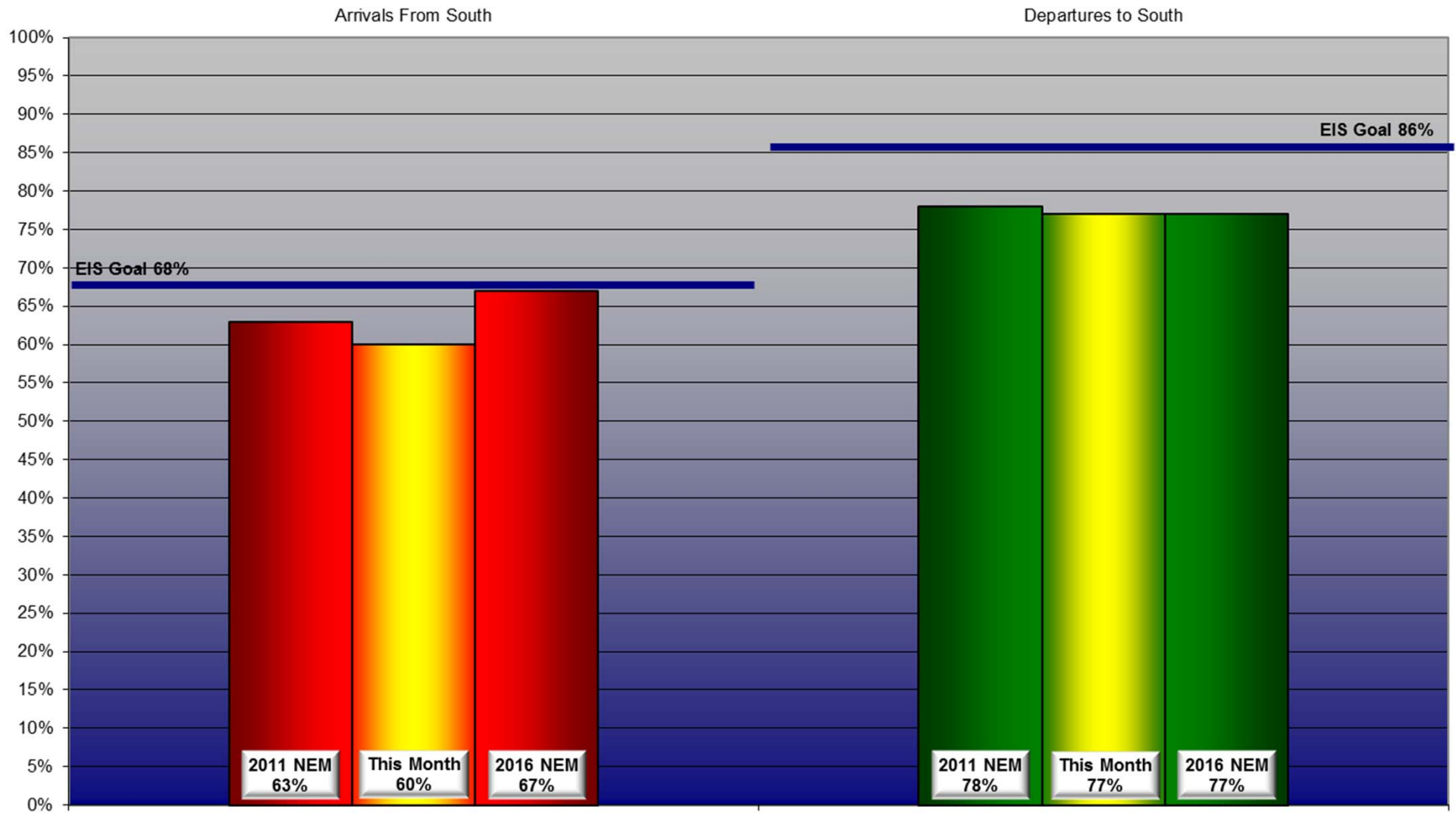
Nydia Regnier discussed her visual of the noise contours and how it relates to the Schnitzelburg neighborhood. She pointed out that her neighborhood is only 10,000 feet

from the end of the runway and they get the brunt of the noise from exceptions to contraflow. She has not slept in 10 nights and the noise is making her and her neighbors sick. Since the FAA will not do anything about it the LRAA should because it is their community.

Next Meeting: Monday, June 2, 2014 at 6 p.m.

Adjournment: A motion was made to adjourn the meeting at 7:07 PM by Pete Levermore and was seconded by John Greathouse.

Monthly Contraflow March 01-31, 2014



Daily Runway Use Summary- March 2014

(from 10:00 PM date list in first column to 7:00 AM the following morning)

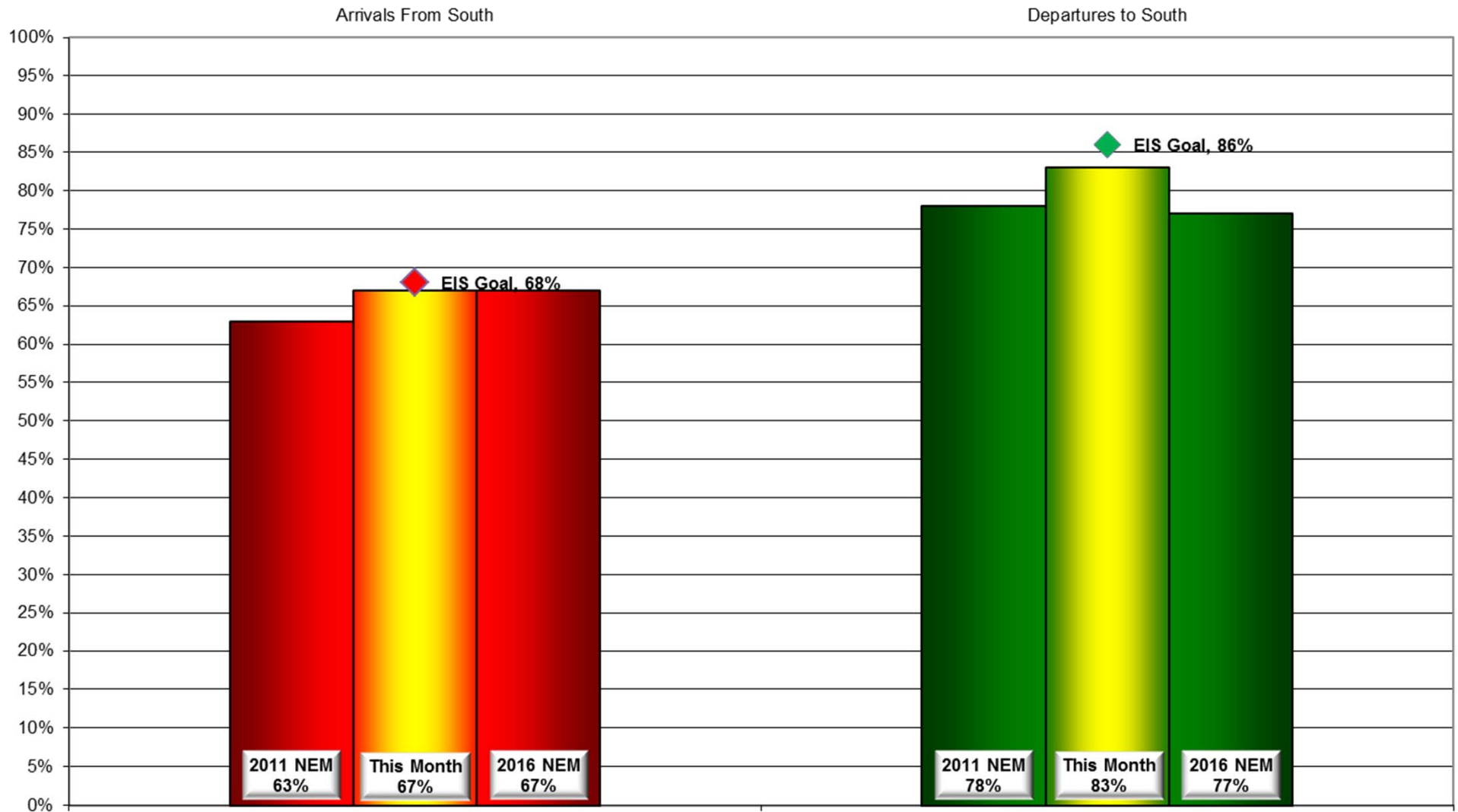
		% of all arrivals from the south										% of all departures to the south																																																																																																																																																																																																																																																																																																																																																																																																																																																																																																																																																																																																																																															
Date	Day	* in	Runway #							Unknown	Notes /																																																																																																																																																																																																																																																																																																																																																																																																																																																																																																																																																																																																																																																

Preferred Flow

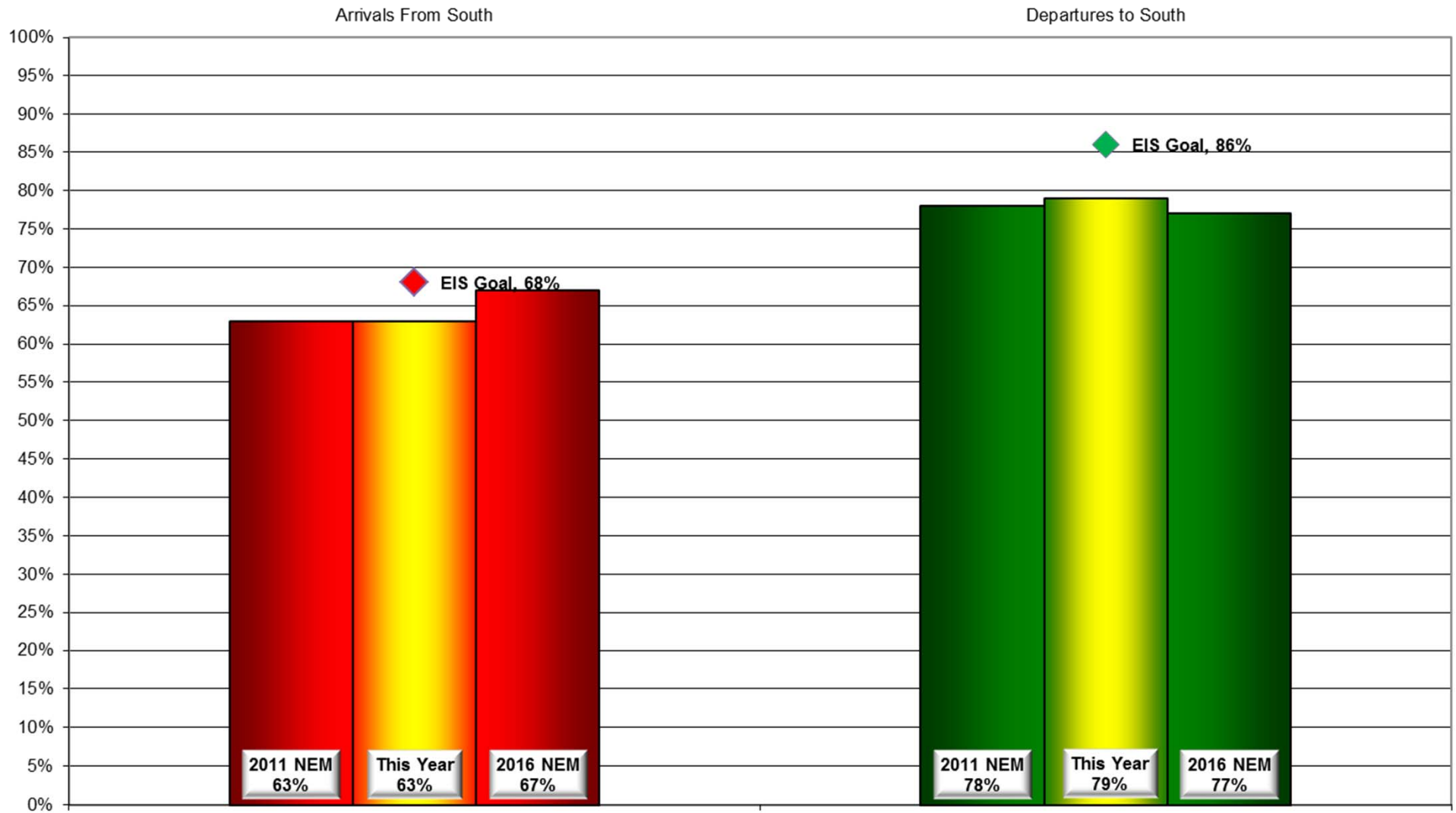
DATIS Reported Conditions Indicate
Support for Non-Preferred Flow

DATIS Reported Conditions Do Not Indicate
Support for Non-Preferred Flow

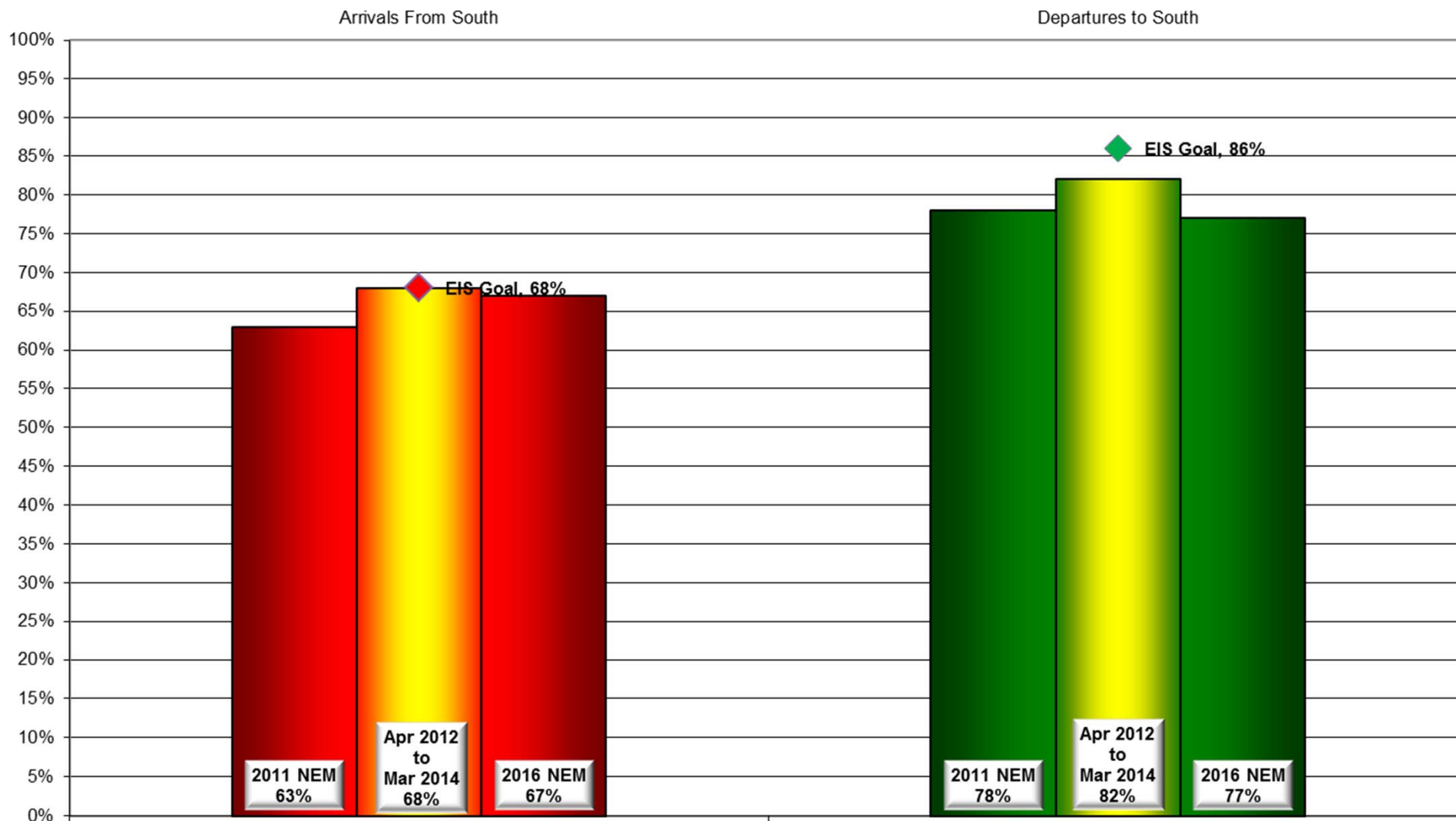
Monthly Contraflow April 01-30, 2014



Yearly Contraflow As of May 2, 2014



Contraflow May 2012 - April 2014



Year-to-Year by Month Percent*

Contraflow

Arrivals From the South (Goal 68%)												Departures to the South (Goal 86%)											
	2006	2007	2008	2009	2010	2011	2012	2013	2014	Avg			2006	2007	2008	2009	2010	2011	2012	2013	2014	Avg	
Jan	54%	39%	50%	63%	94%	91%	62%	72%	51%	65%		Jan	68%	80%	80%	74%	54%	71%	80%	65%	81%	73%	
Feb	57%	77%	50%	49%	90%	73%	69%	77%	72%	70%		Feb	74%	76%	74%	81%	71%	63%	74%	78%	71%	74%	
Mar	64%	52%	52%	46%	80%	52%	61%	87%	60%	61%		Mar	65%	78%	68%	67%	82%	72%	96%	77%	77%	77%	
Apr	61%	61%	44%	53%	57%	47%	78%	60%	67%	58%		Apr	78%	67%	92%	84%	84%	83%	76%	89%	83%	82%	
May	71%	71%	66%	66%	56%	69%	72%	46%		64%		May	70%	84%	78%	84%	87%	85%	81%	85%		83%	
Jun	84%	64%	38%	72%	66%	61%	79%	76%		65%		Jun	89%	85%	93%	81%	96%	93%	87%	80%		88%	
Jul	84%	84%	75%	72%	61%	91%	62%	74%		74%		Jul	88%	85%	84%	82%	90%	88%	92%	88%		87%	
Aug	84%	69%	92%	61%	59%	82%	49%	84%		71%		Aug	79%	87%	77%	96%	92%	91%	91%	92%		89%	
Sep	84%	79%	91%	89%	70%	85%	55%	86%		79%		Sep	84%	89%	73%	82%	73%	64%	92%	87%		80%	
Oct	84%	54%	76%	42%	80%	88%	62%	87%		70%		Oct	76%	68%	77%	71%	78%	63%	78%	89%		75%	
Nov	84%	58%	66%	74%	85%	55%	84%	73%		71%		Nov	83%	77%	74%	73%	77%	72%	81%	83%		77%	
Dec	84%	53%	58%	71%	67%	70%	64%	58%		63%		Dec	82%	74%	62%	65%	78%	65%	67%	71%		69%	
Avg	75%	63%	63%	63%	72%	72%	66%	73%	63%			Avg	78%	79%	78%	78%	80%	76%	83%	82%	78%		

*Number is percentage of all operations between 10:00 PM - 7:00 AM

Daily Runway Use Summary- April 2014

(from 10:00 PM date list in first column to 7:00 AM the following morning)

		% of all arrivals from the south										% of all departures to the south											
Date	Day	* in	Runway #							Unknown	Notes /		** in	Runway #							Unknown	Notes /	
		compliance	11	17L	17R	29	35L	35R	Runway	Use				compliance	11	17L	17R	29	35L	35R	Runway		
04/01/14	Tue	95%			2	3			52	43	0		96%			36	60			2	2	0	
04/02/14	Wed	0%			50	50					0	070-140@3-8knts	100%			45	55					0	
04/03/14	Thu	18%			46	36			8	10	0	140-190@4-11knts,TSRA	91%			32	59			7	2	0	
04/04/14	Fri	100%							61	39	0		0%							63	37	0	310-330@10-13knts,G23
04/05/14	Sat																						
04/06/14	Sun																						
04/07/14	Mon	96%			2			2	50	46	0		88%			40	48			7	5	0	
04/08/14	Tue	100%							61	39	0		94%			38	56			3	3	0	
04/09/14	Wed	97%			3				60	37	0		95%			43	52			3	2	0	
04/10/14	Thu	0%			44	56					0	190-210@11-14knts,G22	100%			41	59					0	
04/11/14	Fri	96%			2	2			63	33	0		97%			38	59			2	1	0	
04/12/14	Sat																						
04/13/14	Sun																						
04/14/14	Mon	100%							59	41	0		0%							58	42	0	310-350@7-15knts,G21,RA
04/15/14	Tue	94%			2	4			59	35	0		97%			40	57			2	1	0	
04/16/14	Wed	91%			6	3			55	36	0		97%			41	56			1	2	0	
04/17/14	Thu	94%			5	1			59	35	0		96%			38	58			2	2	0	
04/18/14	Fri	98%			1	1			59	39	0		0%							60	40	0	340-020@3-7knts
04/19/14	Sat																						
04/20/14	Sun																						
04/21/14	Mon	0%			45	55					0	270-300@4-10knts	100%			43	57					0	
04/22/14	Tue	99%				1			61	38	0		94%			42	52			4	2	0	
04/23/14	Wed	99%			1				62	37	0		97%			42	55			1	2	0	
04/24/14	Thu	0%			41	59					0	110-180@5-10knts,RA	99%			40	59			1		0	
04/25/14	Fri	93%			2	5			58	35	0		96%			34	62			1	3	0	
04/26/14	Sat																						
04/27/14	Sun																						
04/28/14	Mon	0%			43	57					0	080-160@3-7knts,RA	100%			41	59					0	
04/29/14	Tue	0%			45	55					0	130-160@5-11knts,RA	100%			37	63					0	
04/30/14	Wed	96%			2	2			55	41	0		95%			39	56			2	3	0	

Preferred Flow

DATIS Reported Conditions Indicate
Support for Non-Preferred Flow

DATIS Reported Conditions Do Not Indicate
Support for Non-Preferred Flow



***LOUISVILLE
REGIONAL
AIRPORT
AUTHORITY®***

NOISE COMMENT REPORT

March 2014

Comments (SDF/LOU)

March 2014

Street	Zip Code	Time Received	Time	Airport	Disturbance Type	CNF Quad	Status	Operation or Comment Type ¹	Deviation Type ²	Comments
Wolfe AV	40217	2014-03-06 16:11:24	2014-03-06 16:11:24	SDF	Other	NE	Investigated	LQHP	None	Homeowner's mother called to see if we would be working on her son's house yet.
Mt Claire Ave	40217	2014-03-11 10:21:13	2014-03-11 10:21:13	SDF	Other	NE	Investigated	LQHP	None	Homeowner called to ask about being in the program.
Robin RD	40213	2014-03-19 10:21:13	2014-03-19 11:21:13	SDF	Other	NE	Investigated	LQHP	None	Thanks for sending the documents over. We are doing our due diligence. What is our time frame if we decide to move forward?
							Received	LQHP	3	
Mccoy AV	40215	2014-03-01 05:01:00	2014-03-01 04:30:00	SDF	Noise At Wrong Time	NW	Investigated	Non-Standard	Ops	It is about 4:45 AM. I started hearing some planes; they were not coming right over our house. Seems that they are coming just east of the house. Here comes the third one. You just hear the end of the roar as they are taking off. Anyway, it is Saturday and you have a nice weekend.
Mccoy AV	40215	2014-03-04 04:02:00	2014-03-04 02:00:00	SDF	Noise At Wrong Time	NW	Investigated	Non-Standard	Ops	I believe they started coming over between 2:30 AM and 2:52 AM and they are still. Now they are coming a little bit over I want to say southeast.
Mccoy AV	40215	2014-03-04 04:08:00	2014-03-04 03:30:00	SDF	Noise At Wrong Time	NW	Investigated	Standard	None	I had 3 more that have taken off since I last called and they are definitely coming out on the back side of my house which sits facing south.

1. **Standard:** Indicates the "Most Preferred" runway configuration was being utilized at the time of the comment.
Non Standard: Indicates that a "Lesser Preferred" runway configuration was being utilized at the time of the comment.
QHP: QuieterHome Program

2. This column is used to indicate the conditions which most likely necessitated a deviation from the standard procedures.

Comments (SDF/LOU)

March 2014

Street	Zip Code	Time Received	Time	Airport	Disturbance Type	CNF Quad	Status	Operation or Comment Type ¹	Deviation Type ²	Comments
Floral Terrace	40208	2014-03-04 14:52:13	2014-03-04 14:00:00	SDF	Other	NW	Investigated	Standard	None	I live in Old Louisville under one of the flight paths, both in-bound and out-bound. We are having a considerable amount of trouble when volumes are high in particular with planes knocking out all our Wi-Fi. It is knocking out our alarm, it is knocking out our internet, it is knocking out Wi-Fi, stereo, and cell phones. Everything is brand new equipment and we have tested it in other places. The common denominator is when there are a lot of flights.
Mccoy AV	40215	2014-03-07 05:18:36	2014-03-07 04:30:00	SDF	Noise At Wrong Time	NW	Investigated	Standard	None	At about 4:45 AM or somewhere around there I started hearing the planes. I heard the last one about 2 minutes ago.
Mccoy AV	40215	2014-03-07 07:29:36	2014-03-07 05:30:00	SDF	Noise At Wrong Time	NW	Investigated	Standard	None	Right before 6:00 AM and right at 6:00 AM I had them come over again.
Fetter AV	40217	2014-03-10 23:37:36	2014-03-10 23:00:00	SDF	Vibrations	NE	Investigated	Non-Standard	None	It is 11:36 at night and I cannot sleep because my house is shaking because airplanes come over my house and it makes this house shake. It is really annoying and you guys are terrible f***ing neighbors, I mean horrible, terrible, terrible neighbors, you suck and I hate everything about the airport and everything about UPS because they don't care sh** about us. It is so frustrating and horribly mean what you do to these people including me and all these children and all the people who work in this community. It is just evil.

1. **Standard:** Indicates the "Most Preferred" runway configuration was being utilized at the time of the comment.
Non Standard: Indicates that a "Lesser Preferred" runway configuration was being utilized at the time of the comment.
QHP: QuieterHome Program

2. This column is used to indicate the conditions which most likely necessitated a deviation from the standard procedures.

Comments (SDF/LOU)

March 2014

Street	Zip Code	Time Received	Time	Airport	Disturbance Type	CNF Quad	Status	Operation or Comment Type ¹	Deviation Type ²	Comments
Fetter AV	40217	2014-03-11 01:43:36	2014-03-11 01:00:00	SDF	Too Much Noise	NE	Investigated	Non-Standard	None	It has been two hours since I called and two hours I have been laying here in bed trying to sleep. TWO HOURS. I have to be up in five hours now. I am really, really pissed. So you know, work hard today and find some solutions.
Fetter AV	40217	2014-03-12 00:45:13	2014-03-12 00:15:00	SDF	Noise At Wrong Time	NE	Investigated	Non-Standard	None	It is 10 until one in the morning and there are planes bombarding the house again. There is only 5 knots of winds so I would like to know what excuse air traffic control has for keeping us awake again.

1. **Standard:** Indicates the “Most Preferred” runway configuration was being utilized at the time of the comment.
Non Standard: Indicates that a “Lesser Preferred” runway configuration was being utilized at the time of the comment.
QHP: QuieterHome Program

2. This column is used to indicate the conditions which most likely necessitated a deviation from the standard procedures.

Comments (SDF/LOU)

March 2014

Street	Zip Code	Time Received	Time	Airport	Disturbance Type	CNF Quad	Status	Operation or Comment Type ¹	Deviation Type ²	Comments
Fetter AV	40217	2014-03-13 08:36:27	2014-03-12 22:00:00	SDF	Noise At Wrong Time	NE	Investigated	Non-Standard	Weather	<p>It is the 3rd day in a row when we have not had silence between 10 PM and 7 AM. Just after 6 this morning there was a big loud boom because we have planes going out of the airport and it is not time yet it is supposed to be at 7. So once again they fudged by an hour, they fudge here and there and no repercussions whatsoever and that is totally, totally wrong and it is a very inefficient way to get people to do the right thing with a simple slap on the wrist. So we need to work on this, were going to work on this together and get this done because it is total, total bullshit. I am looking at this map and I realize that Schnitzelburg is the only neighborhood with homes at the end of the runway really, really close to the airport. No one else is this close. No one else is on a runway like us. It is really, really oblivious looking at the map the way I did it. You do the overlay and you see where the 60 to 65 range is and you plot where all the homes are and it becomes glaringly obvious that Schnitzelburg more than any other neighborhood in Louisville gets screwed. We pay a big price for UPS to make a lot of money. I know for you to have your job and everything, we are paying for it. So basically I am really annoyed this morning. We need to work on this and I am so, so tired of it. So help us out. Do something Bob, shit. So basically you need to find out why they are leaving so early in the morning and get it done.</p>

1. **Standard:** Indicates the “Most Preferred” runway configuration was being utilized at the time of the comment.
Non Standard: Indicates that a “Lesser Preferred” runway configuration was being utilized at the time of the comment.
QHP: QuieterHome Program

2. This column is used to indicate the conditions which most likely necessitated a deviation from the standard procedures.

Comments (SDF/LOU)

March 2014

Street	Zip Code	Time Received	Time	Airport	Disturbance Type	CNF Quad	Status	Operation or Comment Type ¹	Deviation Type ²	Comments
Fetter AV	40217	2014-03-17 22:32:27	2014-03-17 22:00:00	SDF	Noise At Wrong Time	NE	Investigated	Non-Standard	None	For the eighth night in a row contraflow is not being used between 10:00 PM and 7:00 AM. At 10:24 PM we had a plane fly in and there was 3 knots of wind. They are both flying in to our runway. Why aren't those split, why aren't those. My complaint is why is our runway used more. I need FAA and Air Traffic Control to know that contraflow was not used once again.
S. 2nd ST	40214	2014-03-18 02:49:42	2014-03-18 02:00:00	SDF	Too Much Noise	SW	Investigated	Non-Standard	Ops	I have just been woken up by UPS planes going over in front of my house between the trees. Give me a call because I want to know what is going on.
Bellevue AV	40215	2014-03-18 16:00:42	2014-03-18 16:00:00	SDF	Other	SW	Investigated	Standard	None	I would like to know if my area would be eligible for sound insulation.
E Ormsby AV	40203	2014-03-18 19:18:46	2014-03-18 19:00:00	SDF	Other	NW	Investigated	Standard	None	I live directly under your flight path. Your planes disrupt my TV signals constantly. I have 2 different open air antenna systems and neither one can compete with the air patterns, especially UPS after midnight. I think as well as the people around the corner GOT SOUND PROOFING INSULATION, I THINK WE SHOULD BE ABLE TO GET TV RECEPTION OF SOME SORT.

1. **Standard:** Indicates the “Most Preferred” runway configuration was being utilized at the time of the comment.
Non Standard: Indicates that a “Lesser Preferred” runway configuration was being utilized at the time of the comment.
QHP: QuieterHome Program

2. This column is used to indicate the conditions which most likely necessitated a deviation from the standard procedures.

Comments (SDF/LOU)

March 2014

Street	Zip Code	Time Received	Time	Airport	Disturbance Type	CNF Quad	Status	Operation or Comment Type ¹	Deviation Type ²	Comments
Shelby RD	40213	2014-03-19 10:09:33	2014-03-18 22:30:01	SDF	Too Much Noise	NE	Investigated	Standard	Weather	I live near the Louisville Zoo. Normally, we have an increase in aircraft noise during the holidays. I assume this is due to UPS aircraft due to increased shipping. This year however, the aircraft noise has continued. Recently the noise begins at approximately 10:30 PM and increases in frequency at approximately 3:30-4:00 AM. We hear planes taking off approximately every five minutes. Sometimes the noise is so loud, my windows vibrate. It is very disruptive to our sleep. Will this continue? If so, what options do we have to decrease the amount of noise during the night hours?
Fetter AV	40217	2014-03-19 00:07:27	2014-03-18 23:30:00	SDF	Noise At Wrong Time	NE	Investigated	Non-Standard	Weather	Eight nights in a row Bob. The eighth f***ing night in a row. This is crazy. I am ever so pissed. Let this be known to the FAA that they are f***ing people over and to the LRAA who knows f***ing better.
Mccoy AV	40215	2014-03-19 03:38:06	2014-03-19 03:00:00	SDF	Over Use of Runway	NW	Investigated	Standard	None	I was sick with bronchitis earlier this week. This is the 3rd day I have been hearing the planes come over. I just wanted to call and let you know.

1. **Standard:** Indicates the "Most Preferred" runway configuration was being utilized at the time of the comment.
Non Standard: Indicates that a "Lesser Preferred" runway configuration was being utilized at the time of the comment.
QHP: QuieterHome Program

2. This column is used to indicate the conditions which most likely necessitated a deviation from the standard procedures.

Comments (SDF/LOU)

March 2014

Street	Zip Code	Time Received	Time	Airport	Disturbance Type	CNF Quad	Status	Operation or Comment Type ¹	Deviation Type ²	Comments
Fetter AV	40217	2014-03-19 07:31:27	2014-03-19 04:00:00	SDF	Noise At Wrong Time	NE	Investigated	Non-Standard	Ops	It is now 7:30 AM we just woke up from about 3 hours of sleep. So at 2:30 AM finally the planes ended after being continuous for 3 hours. Then I fell asleep for an hour and a half then, sometime after 4:00 AM a very loud plane came by I tried to look online again, again and again no information is available to me because of your lame a** website. So best night of sleep ever and I am really sick of it. It is not right and I will do everything I can to keep on fighting to get a night's sleep and I can't believe that nobody else gives a shit the way I do. This is total bullshit and Skip Miller needs to know what is going on here.
Fetter AV	40217	2014-03-20 08:41:27	2014-03-20 00:01:00	SDF	Noise At Wrong Time	NE	Investigated	Non-Standard	None	9 nights in a row of uncontrollable planes flying out to the north. Just after midnight. Something really needs to be done about this. There needs to be some kind of penalty associated with this not just a slap on the wrist.
Audubon PKY	40213	2014-03-20 22:17:42	2014-03-20 04:30:00	SDF	Over Use of Runway	NE	Investigated	Non-Standard	None	This morning's contraflow departure bank run in familiar form, from about 4:30 - 6:30 AM (and continuing after that!): west wind; runway component 1 - 3 knots; prescribed flow: south; actual flow: north. Maximum noise over nearby neighborhoods, due to westward drift of aircraft improperly departing to the north. Is anybody surprised?
Sandalwood LN	40219	2014-03-20 12:39:42	2014-03-20 12:39:00	SDF	Too Much Noise	SE	Investigated	Standard	None	I would like to talk about airport noise.

1. **Standard:** Indicates the "Most Preferred" runway configuration was being utilized at the time of the comment.
Non Standard: Indicates that a "Lesser Preferred" runway configuration was being utilized at the time of the comment.
QHP: QuieterHome Program

2. This column is used to indicate the conditions which most likely necessitated a deviation from the standard procedures.

Comments (SDF/LOU)

March 2014

Street	Zip Code	Time Received	Time	Airport	Disturbance Type	CNF Quad	Status	Operation or Comment Type ¹	Deviation Type ²	Comments
Fetter AV	40217	2014-03-25 04:30:27	2014-03-25 04:00:00	SDF	Noise At Wrong Time	NE	Investigated	Non-Standard	Weather	It is 4 in the morning and I am being woken up by the f***ing planes and it sucks. Now that is 15 we had 2 nights and I am going to keep f***ing track and I am f***ing sick of it.
Fetter AV	40217	2014-03-28 08:31:00	2014-03-28 03:00:00	SDF	Noise At Wrong Time	NE	Investigated	Non-Standard	Weather	18 days Bob. In 18 days we have had one night we have had silence. So wrap your f***ing brain around that in case you decide to do something. My daughter was up in the middle of the night, she had a test this morning. You are f***ing raping this neighborhood and I am sick of it. Please do something, something for the people here suffering.
Mccoy AV	40215	2014-03-31 12:07:06	2014-03-31 12:07:00	SDF	Over Use of Runway	NW	Investigated	Non-Standard	Weather	I just wanted to let you know that all last week plans were coming over. They were coming over last night also.
							Received	LRAA	24	

1. **Standard:** Indicates the “Most Preferred” runway configuration was being utilized at the time of the comment.
Non Standard: Indicates that a “Lesser Preferred” runway configuration was being utilized at the time of the comment.
QHP: QuieterHome Program

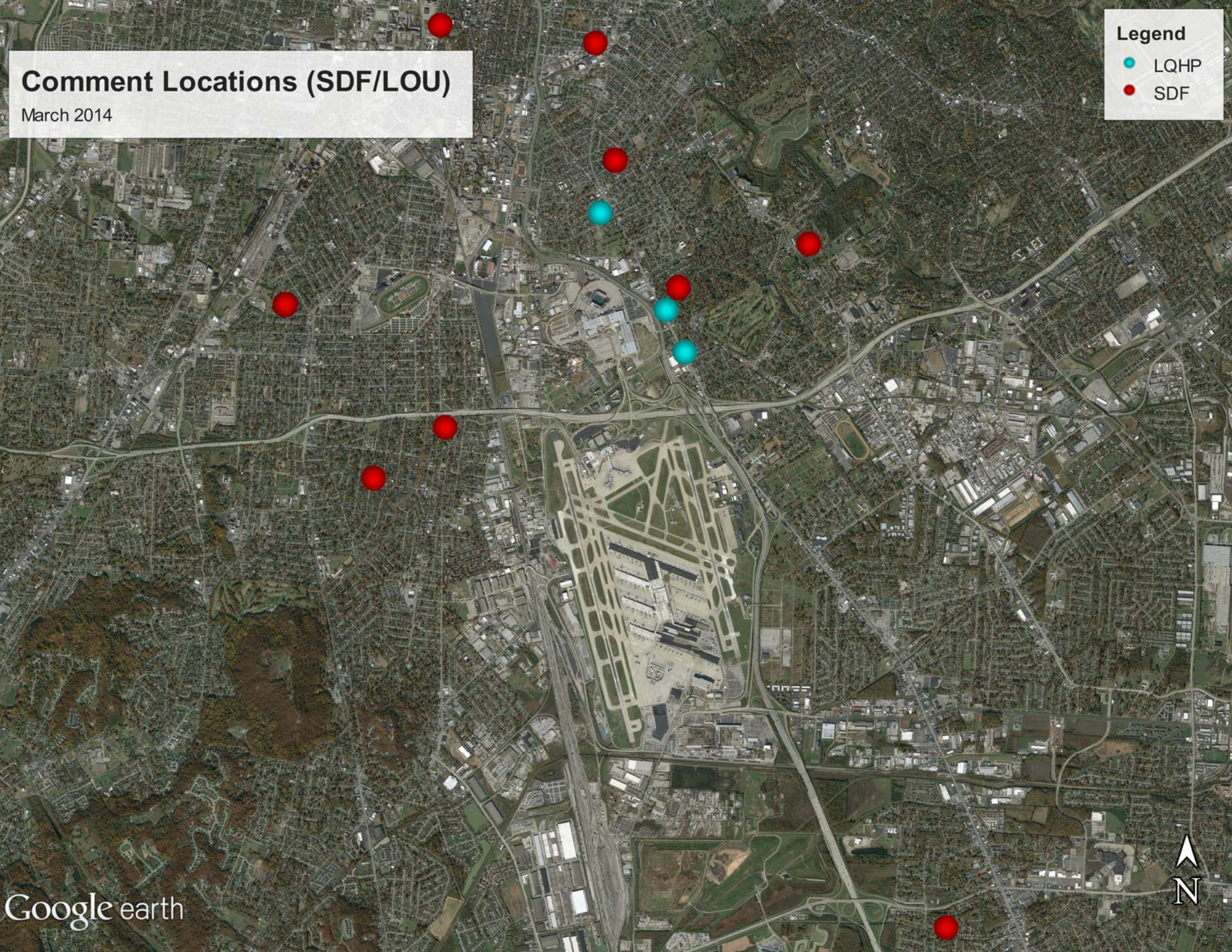
2. This column is used to indicate the conditions which most likely necessitated a deviation from the standard procedures.

Comment Locations (SDF/LOU)

March 2014

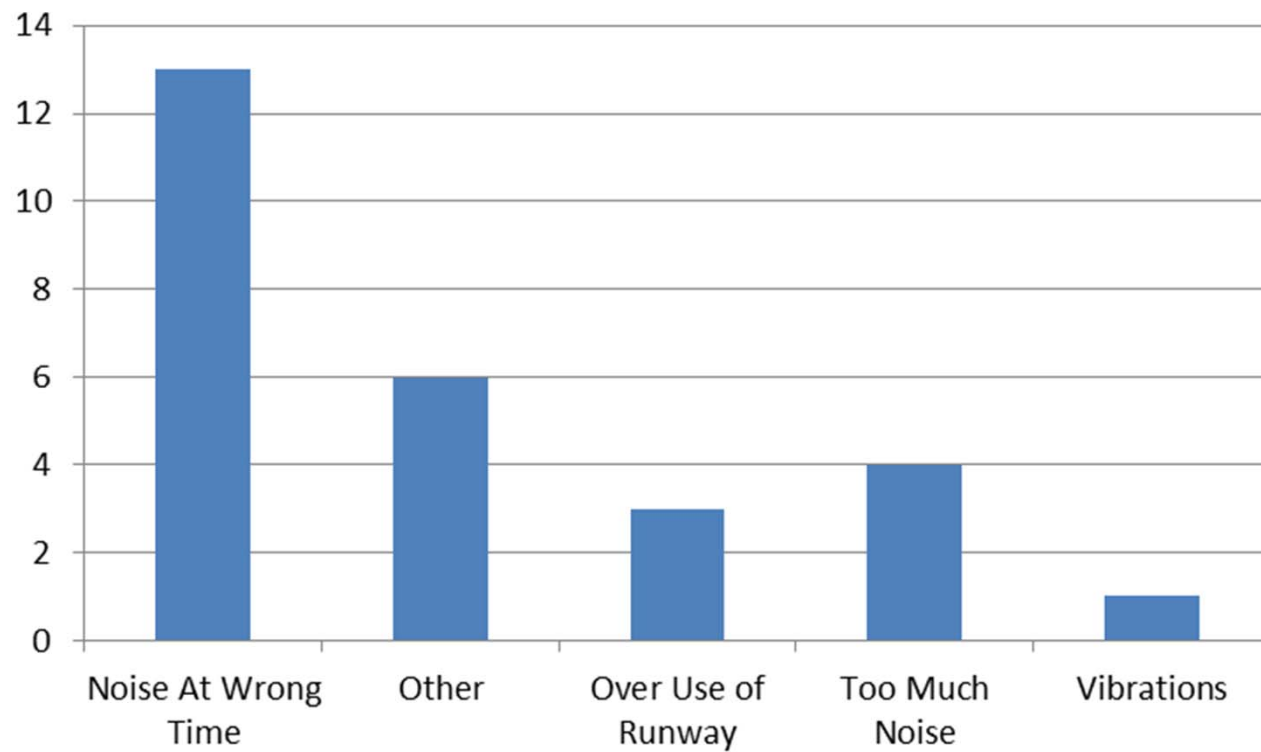
Legend

- LQHP
- SDF



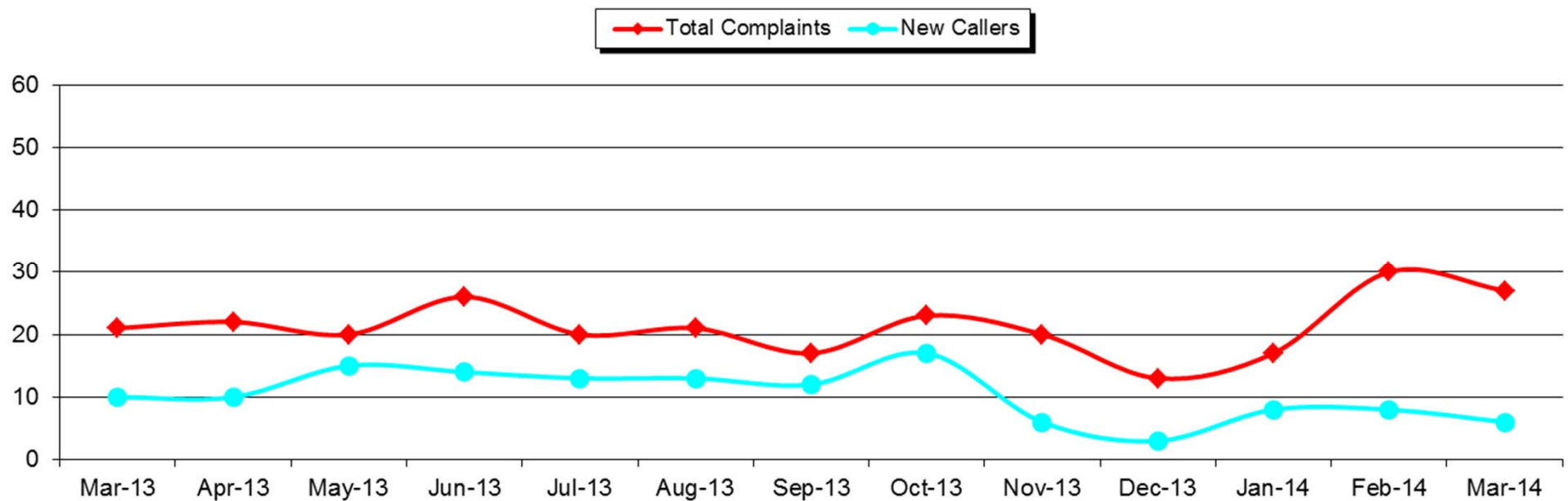
Comment Type* (SDF and LOU)

March 2014



New Address/Comments per Month (SDF and LOU)

March 2014





***LOUISVILLE
REGIONAL
AIRPORT
AUTHORITY®***

NOISE COMMENT REPORT

April 2014

Comments (SDF/LOU)

April 2014

Street	Zip Code	Time Received	Time	Airport	Disturbance Type	CNF Quad	Status	Operation or Comment Type ¹	Deviation Type ²	Comments
Forrest ST	40217	2014-04-04 16:48:12	2014-04-04 16:48:12	SDF	Other	NE	Investigated	LQHP	None	Homeowner called to see if her home was in the program.
Packard AV	40217	2014-04-09 13:00:25	2014-04-09 13:00:25	SDF	Other	NE	Investigated	LQHP	None	Homeowner called regarding eligibility. She said she knows she is one house away but it is next to a vacant lot and there is no sound barrier. Because there is no house, her house should be considered.
Keswick Blvd	40217	2014-04-23 08:47:59	2014-04-23 08:47:59	SDF	Other	NE	Investigated	LQHP	None	Homeowner said someone gave her our number to see if her home was eligible for the "grant".
Emil AV	40217	2014-04-25 08:47:59	2014-04-25 08:47:59	SDF	Other	NW	Investigated	LQHP	None	Homeowner called to ask if her home was in the sound insulation program. She said it seemed that the planes were flying lower or just getting louder.
Farmdale AV	40213	2014-04-30 08:47:59	2014-04-30 08:47:59	SDF	Other	NE	Investigated	LQHP	None	Homeowner called to see if her home was in the program.
							Received	LQHP	5	
Mccoy AV	40215	2014-04-02 23:12:54	2014-04-02 23:00:00	SDF	Noise At Wrong Time	NW	Investigated	Non-Standard	None	The planes have been coming over more often. Tell the little dude from the FAA tower that it will be me jumping his a** come June 2nd or the first Monday in June instead of the lady from Butchertown or Germantown. You know coming over the house is one thing, coming over low is another. That's ridiculous. I mean here it is 11:00 PM, 11:08 PM, one came over. I try to be responsible and respectful but It only goes as far as you give respect. He should be held accountable.

1. **Standard:** Indicates the "Most Preferred" runway configuration was being utilized at the time of the comment.
Non Standard: Indicates that a "Lesser Preferred" runway configuration was being utilized at the time of the comment.
QHP: QuieterHome Program

2. This column is used to indicate the conditions which most likely necessitated a deviation from the standard procedures.

Comments (SDF/LOU)

April 2014

Street	Zip Code	Time Received	Time	Airport	Disturbance Type	CNF Quad	Status	Operation or Comment Type ¹	Deviation Type ²	Comments
Mccoy AV	40215	2014-04-02 23:17:54	2014-04-02 23:00:00	SDF	Other	NW	Investigated	Non-standard	None	It is 11:14 PM and another one came over. You know if you are going to put \$50,000 in work into houses in Germantown then it is only logical to keep flying the planes over there.
Mccoy AV	40215	2014-04-02 23:20:54	2014-04-02 23:00:00	SDF	Noise At Wrong Time	NW	Investigated	Non-Standard	None	If this is going to be going on all night long then I am not going to make it until June to see the tower. Bob, I will see you on the 10th.
Mccoy AV	40215	2014-04-02 23:46:54	2014-04-02 23:30:00	SDF	Over Use of Runway	NW	Investigated	Non-Standard	None	These plans keep coming over and I have already left several messages. The number on your voicemail you left is the fire and police department at the airport. Let me tell you, if you are flying out the 65 corridor and you don't do anything to insulate houses out of that corridor then something has got to give. If I have got to bring the news out here and let them sit in the evenings after 11:00 PM and listen to it. I am sure I won't have a hard time getting a news crew out, or at least a reporter with a recorder. So something has got to give. We are going to have a tough meeting on the 10th if this keeps up between now and then. This is flat out ridiculous, if you are insulating houses in Germantown putting \$50,000 in them, then hey, fly the planes over there and insulate all the houses you need. If you are going to be flying them over here then you need to figure out what you are going to do because that is going to be me screaming on June 2nd.

1. **Standard:** Indicates the "Most Preferred" runway configuration was being utilized at the time of the comment.
Non Standard: Indicates that a "Lesser Preferred" runway configuration was being utilized at the time of the comment.
QHP: QuieterHome Program

2. This column is used to indicate the conditions which most likely necessitated a deviation from the standard procedures.

Comments (SDF/LOU)

April 2014

Street	Zip Code	Time Received	Time	Airport	Disturbance Type	CNF Quad	Status	Operation or Comment Type ¹	Deviation Type ²	Comments
Mccoy AV	40215	2014-04-06 16:09:54	2014-04-05 23:00:00	SDF	Noise At Wrong Time	NW	Investigated	Standard	None	I heard a couple more planes last night. I guess there were 3. They were takeoffs, it was probably between 11:00 PM and 1:00 AM somewhere in that area. I know I left you some messages the other day but the other night I was ticked off. How I see it on the 10th, I will talk to you then and hopefully get a better understanding. Maybe I won't get as mad.
Fetter AV	40217	2014-04-10 10:02:46	2014-04-10 10:00:00	SDF	Too Much Noise	NE	Investigated	Non-Standard	Ops	I just heard the loudest noise you ever heard in your life. It sounded like my house was going to cave in.
Fetter AV	40217	2014-04-10 12:24:14	2014-04-10 12:00:00	SDF	Too Much Noise	NE	Investigated	Non-Standard	Ops	I am calling to lodge a complaint about the noise. I am unable to conduct my conference calls due to the noise from the military aircraft here for Thunder.
Tyler PKY	40204	2014-04-10 15:09:17	2014-04-10 12:30:00	SDF	Too Much Noise	NE	Investigated	Standard	None	While I appreciate the Thunder event, in general, the plane fly overs are too low to the ground, too close to my home and too loud. Please note this is Thursday and if this is to continue for two more days, this is too much. THIS IS TOO MUCH.
Greenleaf RD	40213	2014-04-16 11:00:14	2014-04-16 11:00:14	SDF	Other	NE	Investigated	Standard	None	I recently purchased the home on Greenleaf and want to know how come it is not eligible for the program and why the boundary did not go to the end of the block.
Raven	40213	2014-04-21 09:15:21	2014-04-21 09:00:00	SDF	Other	SE	Investigated	Standard	None	I would like to know if you have a program for sound insulation because of the new east west runway you built.

1. **Standard:** Indicates the "Most Preferred" runway configuration was being utilized at the time of the comment.
Non Standard: Indicates that a "Lesser Preferred" runway configuration was being utilized at the time of the comment.
QHP: QuieterHome Program

2. This column is used to indicate the conditions which most likely necessitated a deviation from the standard procedures.

Comments (SDF/LOU)

April 2014

Street	Zip Code	Time Received	Time	Airport	Disturbance Type	CNF Quad	Status	Operation or Comment Type ¹	Deviation Type ²	Comments
Olde Gloucester CV	40214	2014-04-21 10:00:21	2014-04-21 09:00:00	SDF	Other	SW	Investigated	Non-Standard	None	I want to know if the aircraft have been dumping fuel. I have a red dwarf maple tree that has high yellow/brown spots. It appears someone has sprayed it with fuel. Last week there were a lot of planes going over my house on one day especially the big Air force C-130's.
Rudy LN	40207	2014-04-22 12:38:02	2014-04-22 12:38:00	SDF	Other	NE	Investigated	Standard	None	I am calling about the program that helps people whose homes are in the path of incoming and outgoing planes for noise abatement such as windows doors, insulation things like that. If you could help me out who to call.
Boulevard Napoleon	40205	2014-04-30 05:48:25	2014-04-30 05:00:00	SDF	Vibrations	NE	Investigated	Standard	None	Between 5:08 and 5:15 AM this morning the level of noise from the UPS airplanes shook my house, windows, rattled pictures and artwork hanging on the walls. For six minutes, it felt like an earthquake. UPS is making billions of dollars in profits each year and does not do one thing to improve the quality of life for me or my neighbors. I am disgusted by the lack of action by the leadership of the airport and the board and staff that oversees aircraft noise. I read in your most recent minutes that you had the audacity to present awards to UPS for what they've done to mitigate noise. Is this a joke? Really, recognizing a company that truly doesn't care about the quality of life of residents of Louisville. How many of your board actually live in neighborhoods that are impacted by this noise? Or do they all live in Lake Forest? Unless action is taken to mitigate the noise experienced by homeowners, the board should resign as they are not providing adequate oversight or governance.

1. **Standard:** Indicates the "Most Preferred" runway configuration was being utilized at the time of the comment.
Non Standard: Indicates that a "Lesser Preferred" runway configuration was being utilized at the time of the comment.
QHP: QuieterHome Program

2. This column is used to indicate the conditions which most likely necessitated a deviation from the standard procedures.

Comments (SDF/LOU)
April 2014

							Received	LRAA	13	
--	--	--	--	--	--	--	----------	------	----	--

1. **Standard:** Indicates the “Most Preferred” runway configuration was being utilized at the time of the comment.
Non Standard: Indicates that a “Lesser Preferred” runway configuration was being utilized at the time of the comment.
QHP: QuieterHome Program
2. This column is used to indicate the conditions which most likely necessitated a deviation from the standard procedures.

Comment Locations (SDF/LOU)

April 2014

Legend

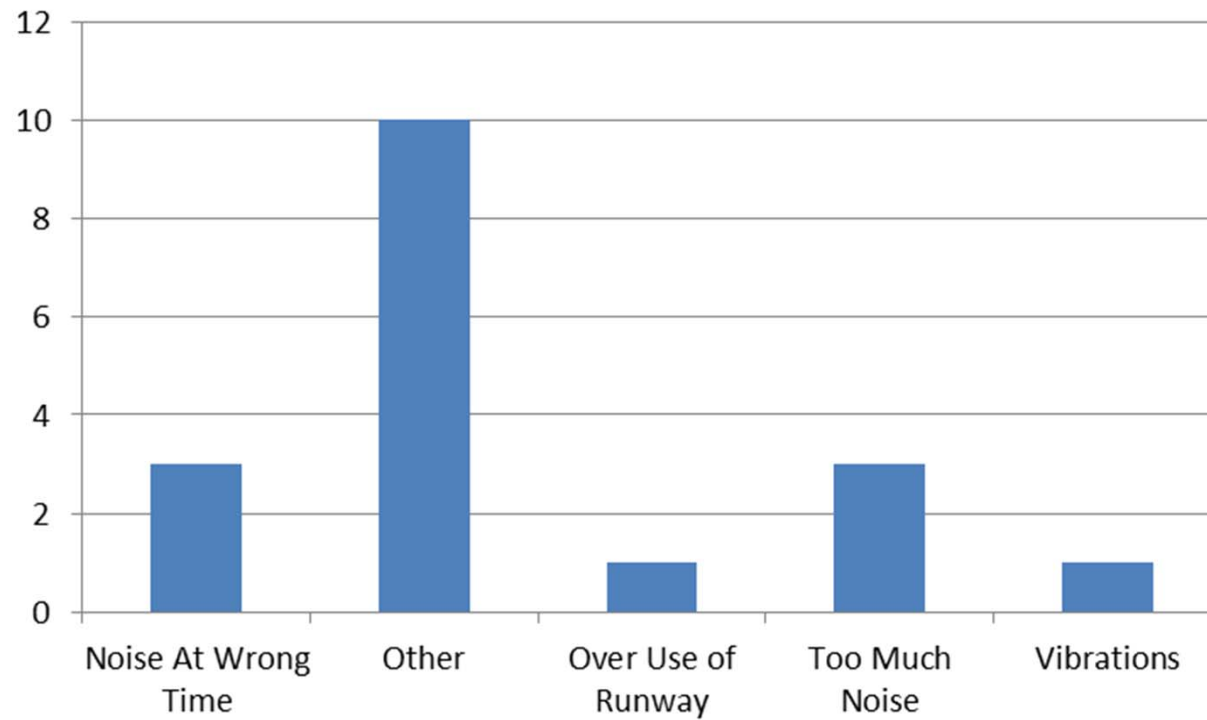
- LQHP
- SDF

Google earth



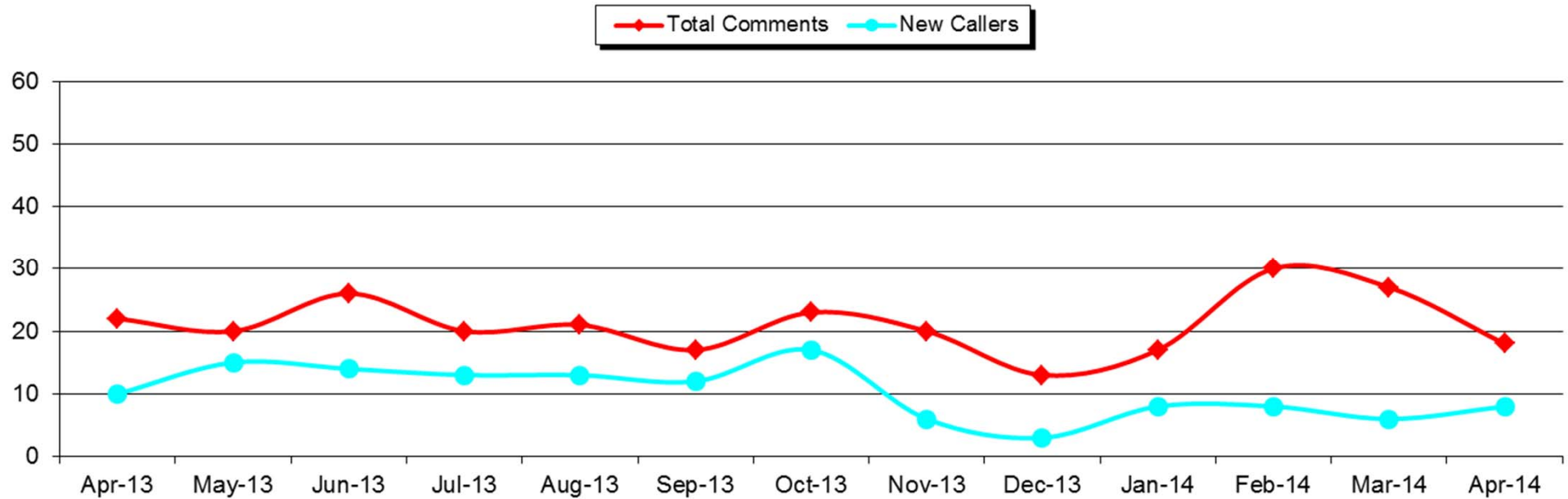
Comment Type* (SDF and LOU)

April 2014



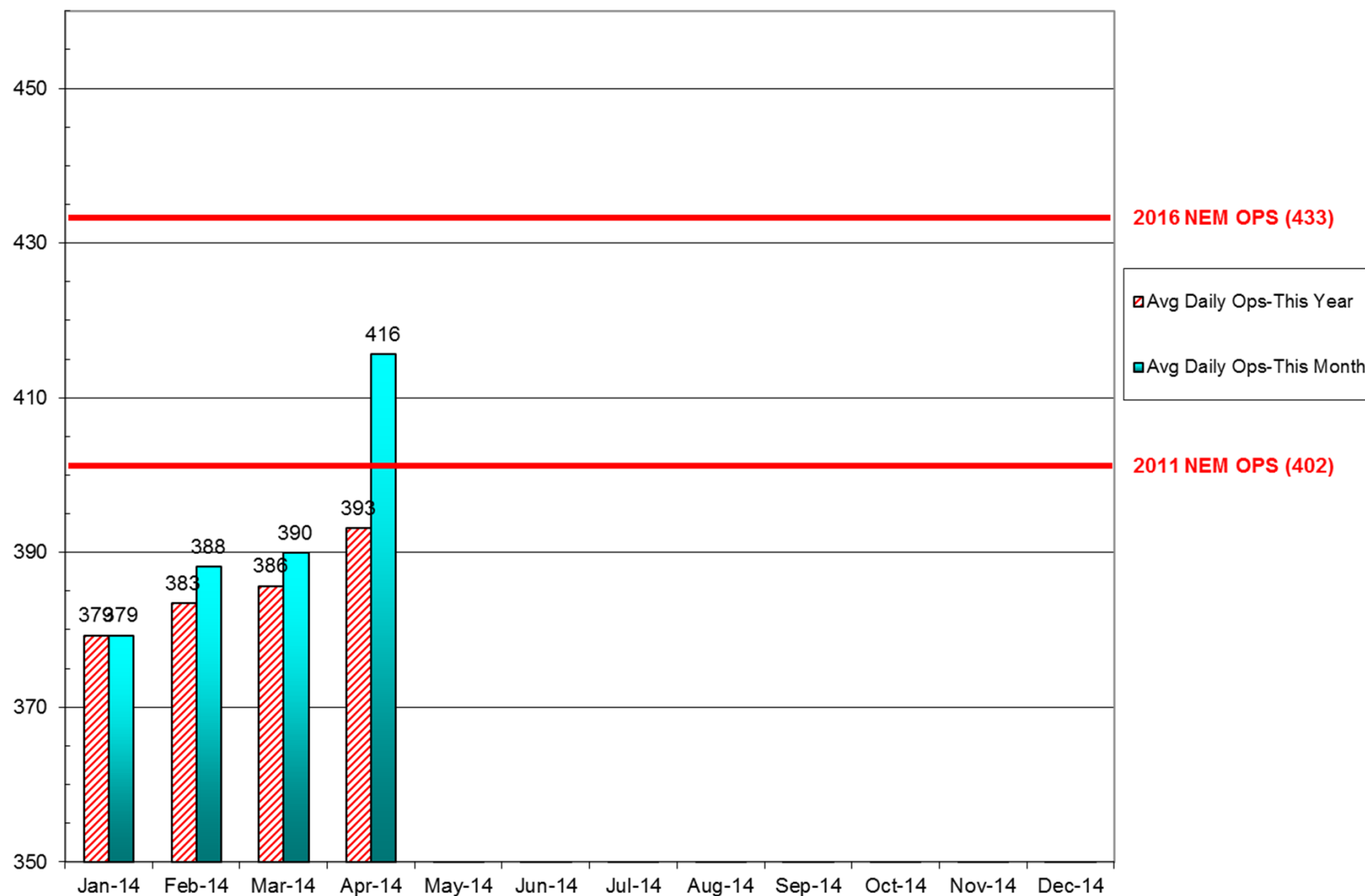
New Address/Comments per Month (SDF and LOU)

April 2014



Operations (SDF)

As of April 30, 2014



Source: Louisville <http://www.flylouisville.com/regional-airport-authority/reports-and-statistics/>

Daily Runway Use Uncorrected (SDF) March 2014

[illegible]

Daily Runway Use (SDF)

Tower Comments March 2014

Day	Date	Time	Comment
sat	1-Mar-14		
sun	2-Mar-14	0000-0130	Wind 0209
mon	3-Mar-14		
tue	4-Mar-14	0730-0930	TWY B closed
tue	4-Mar-14	1100-1230	Flight Check for 17L
wed	5-Mar-14		
thu	6-Mar-14		
fri	7-Mar-14		
sat	8-Mar-14	1530-1730	Wind 3011
sun	9-Mar-14	0800-1100	Wind 3408
mon	10-Mar-14	0930-1230	Wind forecast 2313G20
mon	10-Mar-14	2200-0000	Wind 2210
tue	11-Mar-14	0000-0230	Wind 2210
tue	11-Mar-14	0930-1230	Valid reason not documented
tue	11-Mar-14	2200-0000	Wind 1909, wet runways
wed	12-Mar-14	0000-0230	Wind 1307, wet runways
thu	13-Mar-14		
fri	14-Mar-14		
sat	15-Mar-14		
sun	16-Mar-14	0000-0530	Wind 0410
mon	17-Mar-14	0800-0900	Wind 0310
tue	18-Mar-14	0930-1030	Wind forecast 1609
wed	19-Mar-14		
thu	20-Mar-14	0300-0700	Wind 3011
fri	21-Mar-14	0930-1030	Wind on final 2536, sfc forecast 2112G22
sat	22-Mar-14	0730-0830	Wind 0110
sat	22-Mar-14	1300-1730	Wind 0108, forecast 3408
sun	23-Mar-14	0100-0430	Wind 0208, later 0111
sun	23-Mar-14	2200-0000	Wind 0110
mon	24-Mar-14	0000-0330	Wind 0108
mon	24-Mar-14	1830-1930	Wind 3609, wet runways forecast
tue	25-Mar-14		
wed	26-Mar-14		
thu	27-Mar-14		
fri	28-Mar-14	1430-2130	Wind 3112
sat	29-Mar-14		
sun	30-Mar-14	0630-1630	Wind 3509, forecast 3110
mon	31-Mar-14	0930-1230	Wind forecast 1608

Daily Runway Use Uncorrected (SDF) April 2014

Flow	Time	Tue 4/1	Wed 4/2	Thu 4/3	Fri 4/4	Sat 4/5	Sun 4/6	Mon 4/7	Tue 4/8	Wed 4/9	Thu 4/10	Fri 4/11	Sat 4/12	Sun 4/13	Mon 4/14	Tue 4/15	Wed 4/16	Thu 4/17	Fri 4/18	Sat 4/19	Sun 4/20	Mon 4/21	Tue 4/22	Wed 4/23	Thu 4/24	Fri 4/25	Sat 4/26	Sun 4/27	Mon 4/28	Tue 4/29	Wed 4/30	Time						
North Flow	0:00																															0:00						
	0:30																															0:30						
	1:00																															1:00						
	1:30																															1:30						
	2:00																															2:00						
	2:30																															2:30						
South Flow	3:00																															3:00						
	3:30																															3:30						
	4:00																															4:00						
	4:30																															4:30						
	5:00																															5:00						
	5:30																															5:30						
	6:00																															6:00						
	6:30																															6:30						
	7:00																															7:00						
	7:30																															7:30						
	8:00																															8:00						
8:30																															8:30							
9:00																															9:00							
North Flow	9:30																															9:30						
	10:00										XXX												XXX									10:00						
	10:30																															10:30						
	11:00																															11:00						
	11:30																															11:30						
	12:00																															12:00						
12:30										XXX																					12:30							
South Flow	13:00																															13:00						
	13:30																															13:30						
	14:00																															14:00						
	14:30																															14:30						
	15:00																															15:00						
	15:30																															15:30						
	16:00																															16:00						
	16:30																															16:30						
	17:00																															17:00						
	17:30																															17:30						
	18:00																															18:00						
	18:30																															18:30						
	19:00																															19:00						
19:30																															19:30							
20:00																															20:00							
20:30																															20:30							
21:00																															21:00							
21:30																															21:30							
North Flow	22:00																															22:00						
	22:30		XXX																													22:30						
	23:00		XXX																													23:00						
	23:30		XXX																													23:30						
Flow	Time	Tue 4/1	Wed 4/2	Thu 4/3	Fri 4/4	Sat 4/5	Sun 4/6	Mon 4/7	Tue 4/8	Wed 4/9	Thu 4/10	Fri 4/11	Sat 4/12	Sun 4/13	Mon 4/14	Tue 4/15	Wed 4/16	Thu 4/17	Fri 4/18	Sat 4/19	Sun 4/20	Mon 4/21	Tue 4/22	Wed 4/23	Thu 4/24	Fri 4/25	Sat 4/26	Sun 4/27	Mon 4/28	Tue 4/29	Wed 4/30	Time						
		Preferred Flow																																				
		DATIS Reported Conditions Indicate Support for Non-Preferred Flow																																				
		DATIS Reported Conditions <u>Do Not</u> Indicate Support for Non-Preferred Flow																																				
		South Flow is Preferred Flow from 09:30 Saturday - 09:30 Monday																Source: Louisville International Airport Aircraft Flight Tracking and Noise Management System (AFTNMS)																				
		XXX	Complaint																																			

Daily Runway Use (SDF)

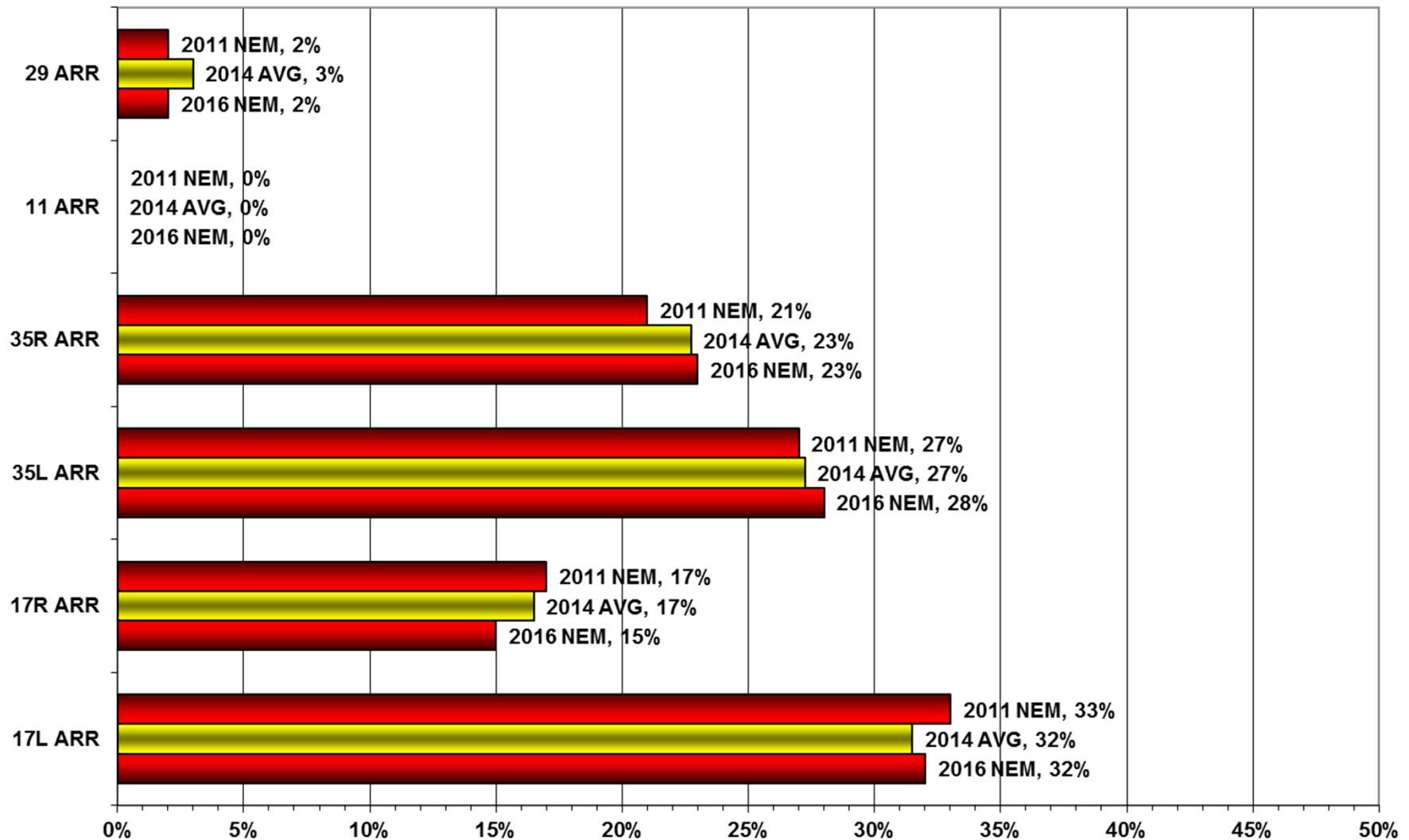
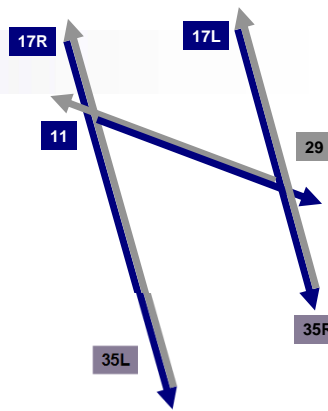
Tower Comments April 2014

Day	Date	Time	Comment
tue	1-Apr-14		
wed	2-Apr-14	2200-0000	Wind 1408 wet runways
thu	3-Apr-14	0000-0230	Wet rwys & unable RWY change during inbound
fri	4-Apr-14		
sat	5-Apr-14	1400-1930	Wind forecast 3509, went south @ 1923
sun	6-Apr-14		
mon	7-Apr-14	0930-1130	Valid reason not documented
mon	7-Apr-14	1830-2130	On RWY29, wind 2520G26 wet runways
tue	8-Apr-14	1600-1630	Wind 3210, rain in area, wet runways
wed	9-Apr-14		
thu	10-Apr-14		
fri	11-Apr-14		
sat	12-Apr-14		
sun	13-Apr-14		
mon	14-Apr-14		
tue	15-Apr-14		
wed	16-Apr-14		
thu	17-Apr-14		
fri	18-Apr-14		
sat	19-Apr-14	0300-0700	Wind 0110
sat	19-Apr-14	0900-1430	Wind 0110, forecast 0511
sat	19-Apr-14	1730-1930	Wind 0411
sun	20-Apr-14		
mon	21-Apr-14	0930-1230	Forecast 2312, inaccurate - did not exceed 4 kt
mon	21-Apr-14	2200-0000	Wind 2707 wet runways
tue	22-Apr-14	0000-0230	R3704 active w/ aircraft activity
wed	23-Apr-14	2030-2130	Wind 0109
thu	24-Apr-14		
fri	25-Apr-14	0830-0900	Wind 2912 wet runways
fri	25-Apr-14	2000-2130	Balloon glow, landing 35L/R, dep RWY 29
sat	26-Apr-14		
sun	27-Apr-14		
mon	28-Apr-14		
tue	29-Apr-14		
wed	30-Apr-14	1900-2130	RWY29, wind 2919, North @2058 wind 2916

Runway Use (SDF)

Arrivals

NEM vs. Actual
January 01 - April 30, 2014

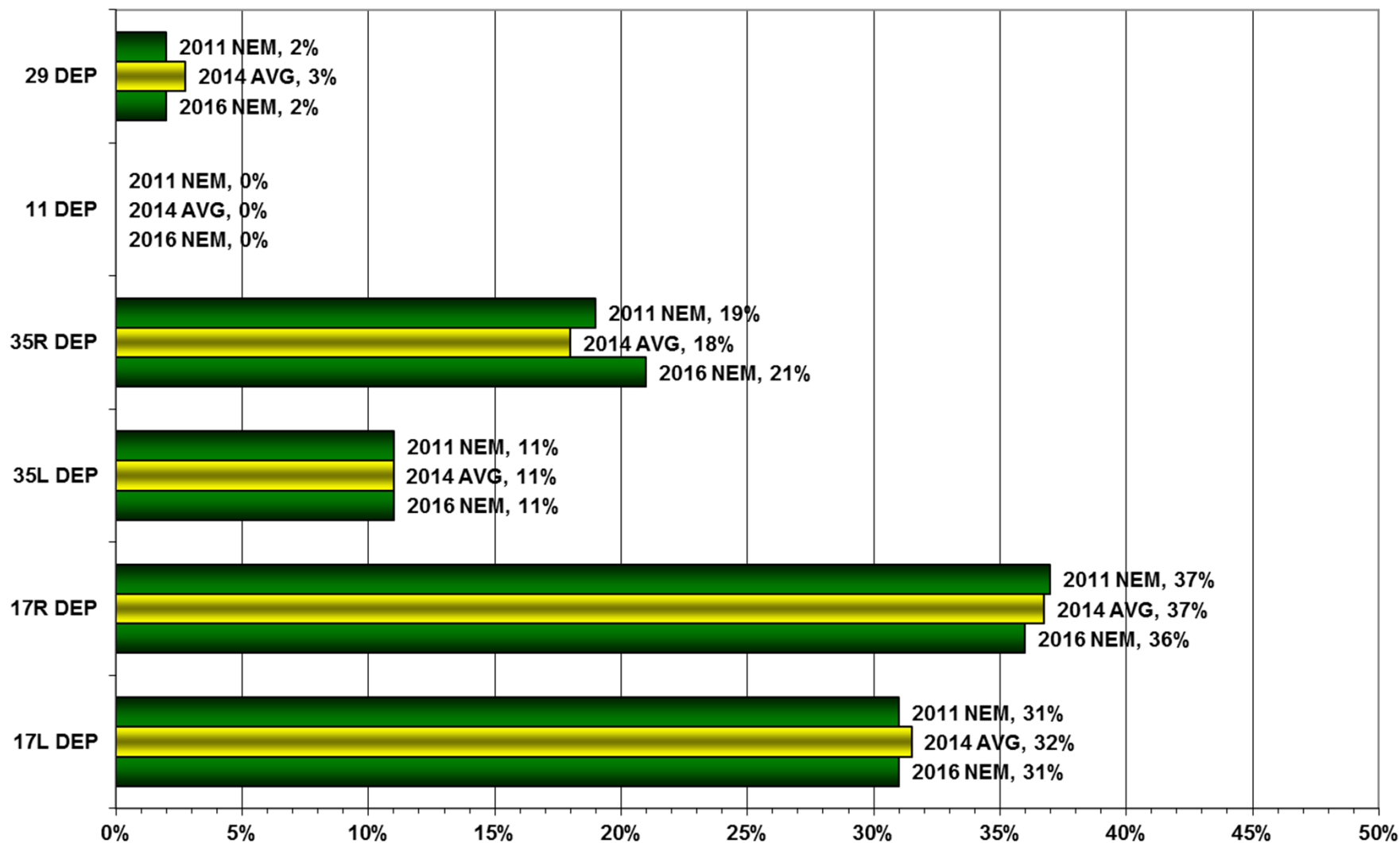
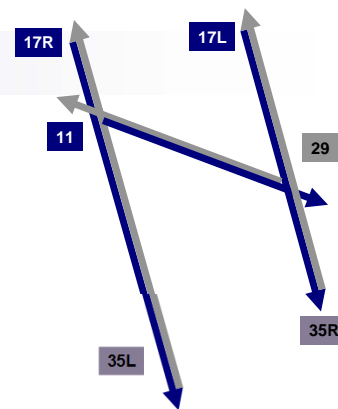


Source: Louisville International Airport
Aircraft Flight Tracking and Noise Management System (AFTNMS)

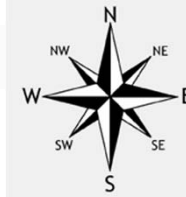
Runway Use (SDF)

Departures

NEM vs. Actual
January 01, - April 30, 2014



Source: Louisville International Airport
Aircraft Flight Tracking and Noise Management System (AFTNMS)

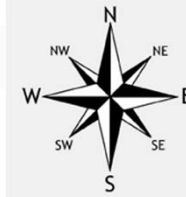


Runway Use 0930L-1230L_(SDF)

As of April 2014

	Arrival Percentage by Runway								Departure Percentage by Runway							
	11	17L	17R	29	35L	35R	% From South	Arrival Count	11	17L	17R	29	35L	35R	% To North	Departure Count
May-12	0	27	22	0	29	21	50	745	0	25	25	0	15	34	49	449
Jun-12	0	11	16	4	46	26	72	652	0	12	14	4	19	52	71	427
Jul-12	0	6	32	0	49	13	62	619	0	8	27	3	45	17	62	384
Aug-12	0	26	23	0	34	17	51	717	0	24	26	1	21	28	49	437
Sep-12	0	29	10	0	21	40	61	655	0	33	10	1	13	43	56	353
Oct-12	1	20	26	3	20	31	51	740	2	24	19	3	9	43	52	475
Nov-12	0	10	4	3	50	33	83	762	0	7	4	3	9		9	
Dec-12	0	18	12	5	41	24	65	779	0	17	9	3	8	63	71	412
Jan-13	0	16	12	0	42	30	72	742	0	17	16	2	14	52	66	436
Feb-13	0	21	11	9	39	2	41	628	0	21	16	7	12	44	56	354
Mar-13	0	10	6	0	51	33	84	728	0	10	8	3	14	65	79	441
Apr-13	0	24	27	2	27	20	47	719	0	26	23	3	8	40	48	441
May-13	0	33	33	0	20	14	34	785	0	33	31	1	10	25	35	410
Jun-13	0	10	13	0	43	31	74	717	0	8	13	0	22	57	79	534
Jul-13	0	23	10	0	42	25	67	694	0	24	12	0	20	44	64	465
Aug-13	0	22	10	0	43	25	68	725	0	18	13	0	13	56	69	483
Sep-13	0	13	5	0	43	39	82	676	0	14	5	0	25	56	81	448
Oct-13	0	16	14	2	37	31	68	864	0	12	18	3	13	54	67	535
Nov-13	0	29	12	0	39	20	59	721	0	26	19	3	12	40	52	437
Dec-13	0	14	13	0	42	31	73	943	0	14	16	0	9	61	70	460
Jan-14	0	27	21	2	29	21	50	682	0	28	21	4	19	37	56	401
Feb-14	0	13	11	7	37	32	69	669	0	19	11	7	15	48	63	359
Mar-14	0	25	21	7	29	18	47	675	0	30	18	4	7	41	48	408
Apr-14	0	33	19	5	23	20	43	700	0	39	19	6	9	27	36	416
Monthly Avg.	0	20	16	2	37	25	61		0	20	16	3	15	45	60	

Source: Louisville International Airport
Aircraft Flight Tracking and Noise Management System (AFTNMS)



Gate Compliance by Runway

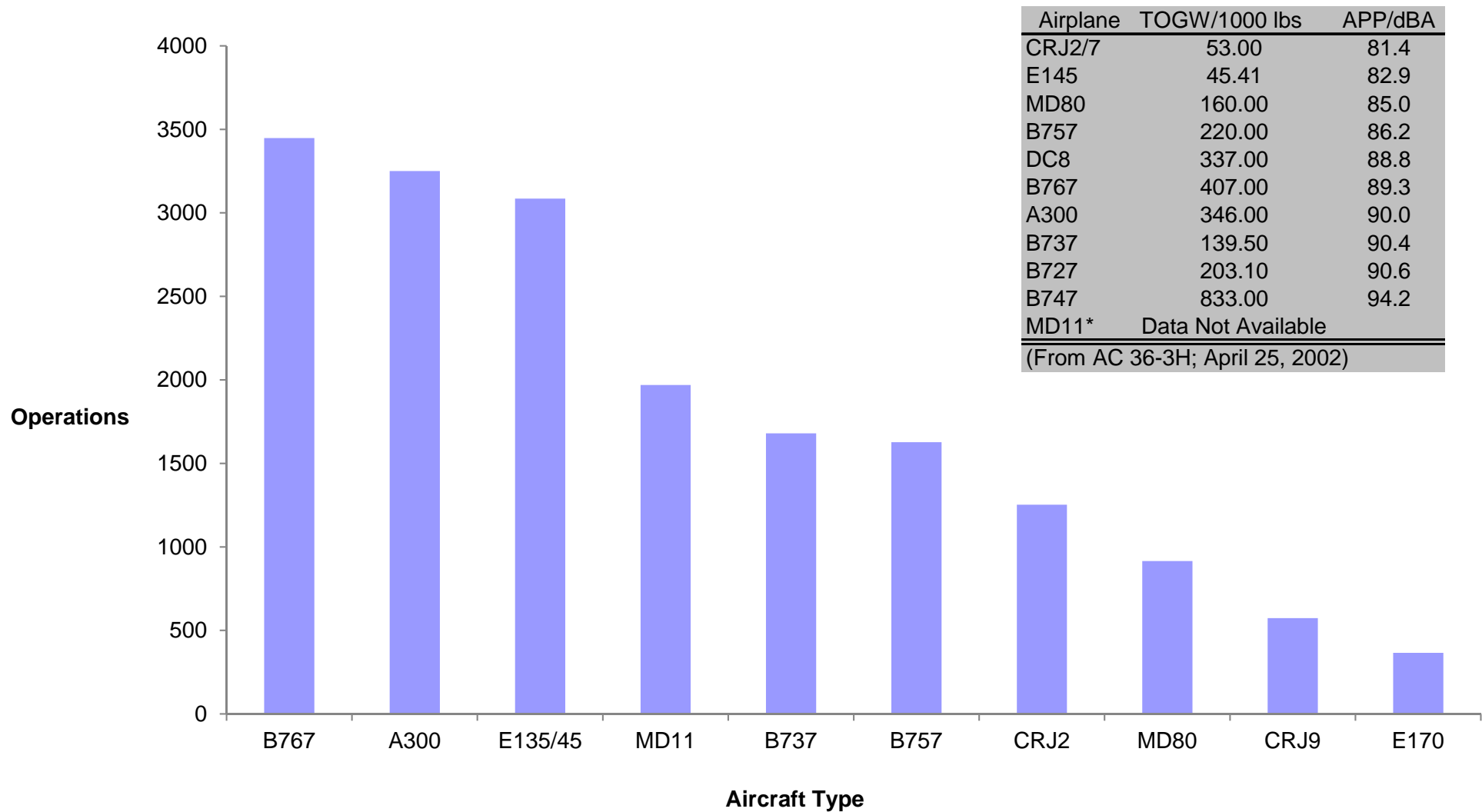
As of April 30, 2014

	ARRIVALS Percent Compliant					Departure Percent Compliant				
Month	17L	17R	35L	35R	ARR AVG	17L	17R	35L	35R	DEP AVG
May-12	71%	86%	75%	77%	77%	67%	80%	78%	87%	78%
Jun-12	61%	81%	71%	73%	72%	63%	75%	78%	90%	77%
Jul-12	66%	83%	70%	76%	74%	62%	72%	77%	89%	75%
Aug-12	68%	85%	75%	77%	76%	63%	71%	83%	90%	77%
Sep-12	79%	93%	81%	78%	83%	53%	72%	72%	88%	71%
Oct-12	80%	92%	85%	82%	85%	70%	59%	70%	89%	72%
Nov-12	73%	73%	82%	85%	78%	84%	82%	84%	92%	86%
Dec-12	84%	93%	89%	91%	89%	74%	85%	72%	79%	78%
Jan-13	82%	93%	82%	83%	85%	73%	86%	81%	87%	82%
Feb-13	78%	93%	85%	84%	85%	73%	85%	76%	78%	78%
Mar-13	73%	86%	88%	86%	83%	82%	89%	82%	86%	85%
Apr-13	75%	90%	77%	78%	80%	73%	89%	80%	81%	81%
May-13	81%	87%	78%	77%	81%	70%	84%	76%	92%	81%
Jun-13	73%	84%	76%	82%	79%	76%	88%	74%	86%	81%
Jul-13	82%	87%	81%	82%	83%	81%	84%	76%	91%	83%
Aug-13	78%	89%	79%	81%	82%	78%	83%	78%	92%	83%
Sep-13	78%	88%	76%	81%	81%	79%	86%	77%	93%	84%
Oct-13	77%	90%	83%	79%	82%	75%	90%	77%	90%	83%
Nov-13	77%	93%	80%	82%	83%	71%	91%	79%	92%	83%
Dec-13	82%	94%	90%	89%	89%	64%	87%	71%	89%	78%
Jan-14	78%	88%	86%	84%	84%	67%	91%	75%	89%	81%
Feb-14	80%	89%	86%	85%	85%	60%	90%	76%	89%	79%
Mar-14	74%	90%	79%	81%	81%	71%	86%	78%	87%	81%
Apr-14	79%	91%	82%	81%	83%	68%	81%	76%	86%	78%
24 Month Avg.					82%					80%

Source: Louisville International Airport
Aircraft Flight Tracking and Noise Management System (AFTNMS)

Operations by Aircraft Type (SDF) Only Top 10 Aircraft Types Shown

March/April 2014



Source: Louisville International Airport

Aircraft Flight Tracking and Noise Management System (AFTNMS)