

Community Noise Forum
Monday, March 24, 2014
Agenda

- I. Call to order: 6:00PM
- II. Minutes of January 27, 2014.
- III. Election of Officers
- IV. Part 150 NCP
 - A. Update: Noise Insulation Program
 - B. Contraflow Exceptions
- V. Current Noise Concerns
 - A. Noise Concerns/Complaints
 - B. Runway Utilization
 - C. Construction and Maintenance Activity
- VI. Announcements
- VII. Guest Comments
- VIII. Next Meeting: Monday, May 26, 2014
- IX. Adjournment:

COMMUNITY NOISE FORUM (CNF)
Monday, November 25, 2013

Members

John Sistarenik, ANA
Pete Levermore, Airline Affairs
Bob Slattery, LRAA
Mary Rose Evans, LRAA Board
Brian Sinnwell, LRAA
Skip Miller, LRAA

Verna Goatley, Metro
Jason Schmidt, KYANG
Mike Zanone, Northwest
Ken Dietz, UofL
Pat Gould, Northeast

Guests

Dorn Crawford, Audubon Pkwy.
David Haynes, Melford Ave.
Virginia Embry, Melford Ave.
Joanne Langdon, Melford Ave.
Shane Smith, SACC
Greg Petto, FAA-Tower

Trish Burke, LRAA
Karen Scott
Wendy Harrower, C&S
Jonathan Bonds, UPS
Dave Senechal, FAA-Tower
Sam Carter, Exelis

The meeting was called to order at 6:00 p.m. by John Sistarenik. Verna Goatley made a motion to approve the minutes from the September meeting and Pete Levermore seconded the motion. The September minutes were approved as written.

John announced that the CNF is celebrating its 10 year anniversary. In addition to being the annual holiday meeting with a guest speaker, the CNF will be presenting their first FlyQuiet Awards. The purpose of this award is to recognize organizations or individuals for their contributions to noise mitigation and abatement efforts at Louisville International Airport. John presented the awards to (SDF) ATCT/TRACON (Dave Senechal and Greg Petto), United Parcel Service (Jonathan Bonds) and Bob Slattery of the Louisville Regional Airport Authority.

Sam Carter from Exelis gave a presentation on the NextGen Flight Tracking.

Part 150 NCP:

- A. Updates:** See handout.
- B. Contraflow Exceptions:** See handout.

Current Noise Concerns:

- A. Report on Noise Concerns/Complaints:** See handout.
- B. Runway Utilization:** See handout.

C. Construction and Maintenance Activity: See handout.

Announcements: None.

Guest Comments: None.

Next Meeting: Monday, January 27, 2014 at 6 p.m.

Adjournment: A motion was made to adjourn the meeting at 7:05pm by Pat Gould and was seconded by Pete Levermore.

COMMUNITY NOISE FORUM (CNF)
Monday, January 27, 2014

Members

John Sistarenik, ANA
Pete Levermore, Airline Affairs
Bob Slattery, LRAA
Mary Rose Evans, LRAA Board
Brian Sinnwell, LRAA

Verna Goatley, Metro
Mike Zanone, Northwest

Guests

Dorn Crawford, Audubon Pkwy.
Shane Smith, SACC

The meeting was called to order at 6:00 p.m. by John Sistarenik. Pete Levermore had one spelling correction to add an “s” to Jonathan Bonds name. Due to not having a quorum and acting as a committee of the whole, the November minutes will be approved, as corrected at the March meeting.

Part 150 NCP:

A. Updates:

Phase 3A-1: Sound insulation for 22 families. Construction began on January 6th and the contractor has completed 6 homes in this area. Anticipated completion date is March.

Phase 4A: Sound insulation for 50 families was awarded at the November board meeting. Final measurements began January 20th and should be completed the week of January 27th. Construction is anticipated to occur in the spring.

Phase 4B: Sound insulation for 71 families advertised Sunday, January 26th and is anticipated to be awarded at the February board meeting.

Phase 5: A contract to provide Sound Insulation for 85 families is anticipated to go to the January board meeting for award.

- B. Contraflow Exceptions:** Contraflow for November, 61% for arrivals from the south and 76% for departures to the south. In December, arrivals from the south were 58% and departures to the south were 71%. For CY-2013 the arrivals averaged 72% and the departures averaged 82%. A daily summary for November and December 2013 is contained in the handout. A monthly summary going back 8 years is also included in the handout.

Current Noise Concerns:

A. Report on Noise Concerns/Complaints: We received a total of 20 comments in November, 5 were comments received at the QHP project office and 15 were received by the LRAA. In December we received a total of 13 comments, 5 were received at the QHP project office and 8 were received by the LRAA.

B. Runway Utilization: Runway utilization percentages for November and December are contained in the handout. Daily utilization and comments from the Air Traffic Control Tower for November and December are also included in the handout. At the September 2013 meeting Mike Zanone asked for additional information regarding gate compliance for each runway. Bob utilized a presentation describing arrival and departure procedures contained in the Runway Use Agreement and gave a depiction of operations for each of the respective gates.

C. Construction and Maintenance Activity: Brian Sinnwell reported the annual airfield electrical project is underway and should run through April 1st.

Announcements: John Sistarenik announced that elections will be held at the March meeting.

John also announced that the FAA wrote an article regarding the Fly Quiet Award they received at the November meeting.

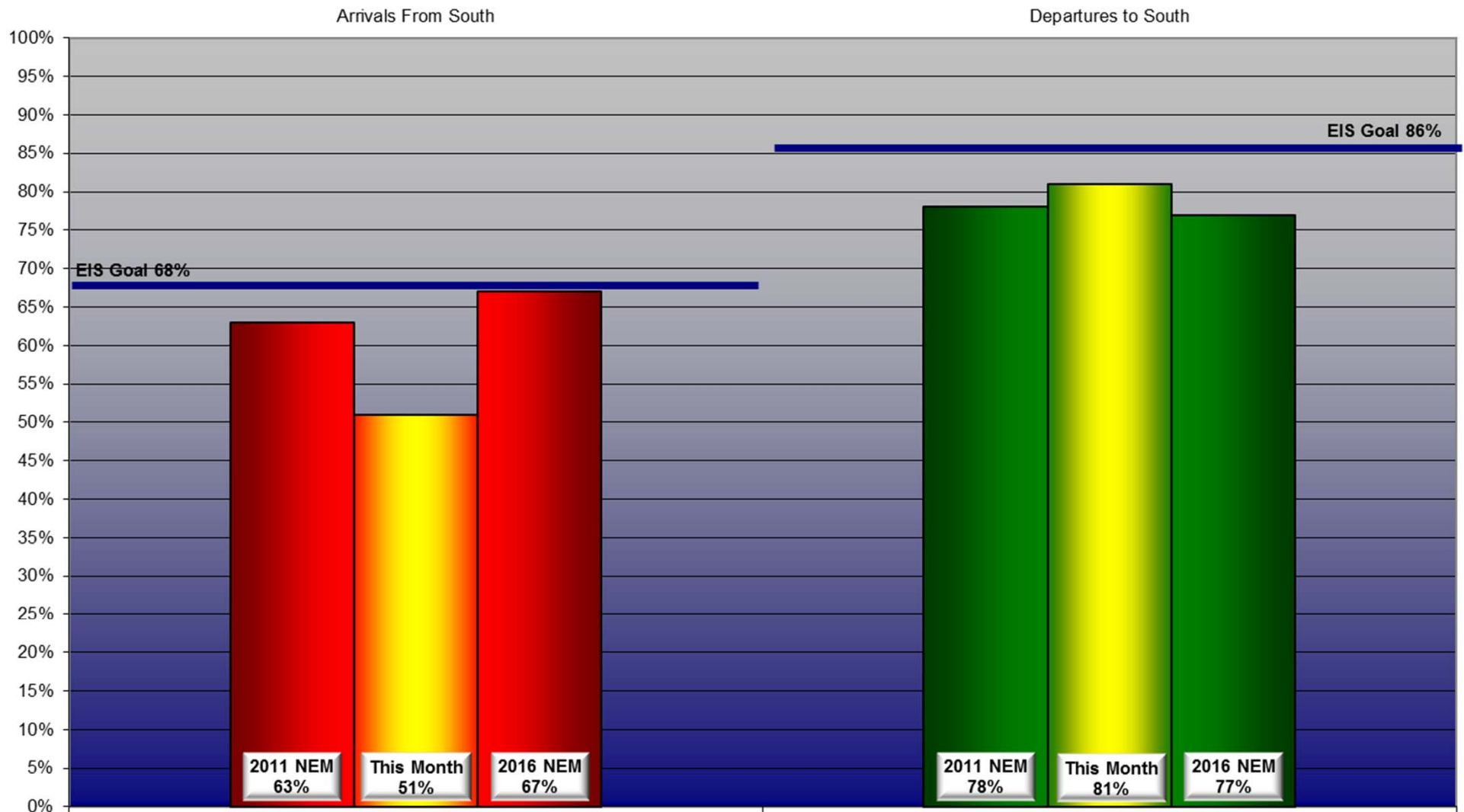
John also announced that Kevin Kays has resigned from the Board and a replacement will be named. John and the Board thanked Mr. Kays for his service.

Guest Comments: Shane Smith asked a question about the air quality in the area, and who monitors that. He talked about the black stains on the roofs. Bob told him that the LRAA does not do air monitoring but has conducted emissions inventories in the past. The black streaks have been discussed in the past and it is most likely algae common to the area.

Next Meeting: Monday, March 24, 2014 at 6 p.m.

Adjournment: A motion was made to adjourn the meeting at 7:00pm by Mike Zanone and was seconded by Pete Levermore.

Monthly Contraflow January 01-31, 2014



Daily Runway Use Summary- January 2014

(from 10:00 PM date list in first column to 7:00 AM the following morning)

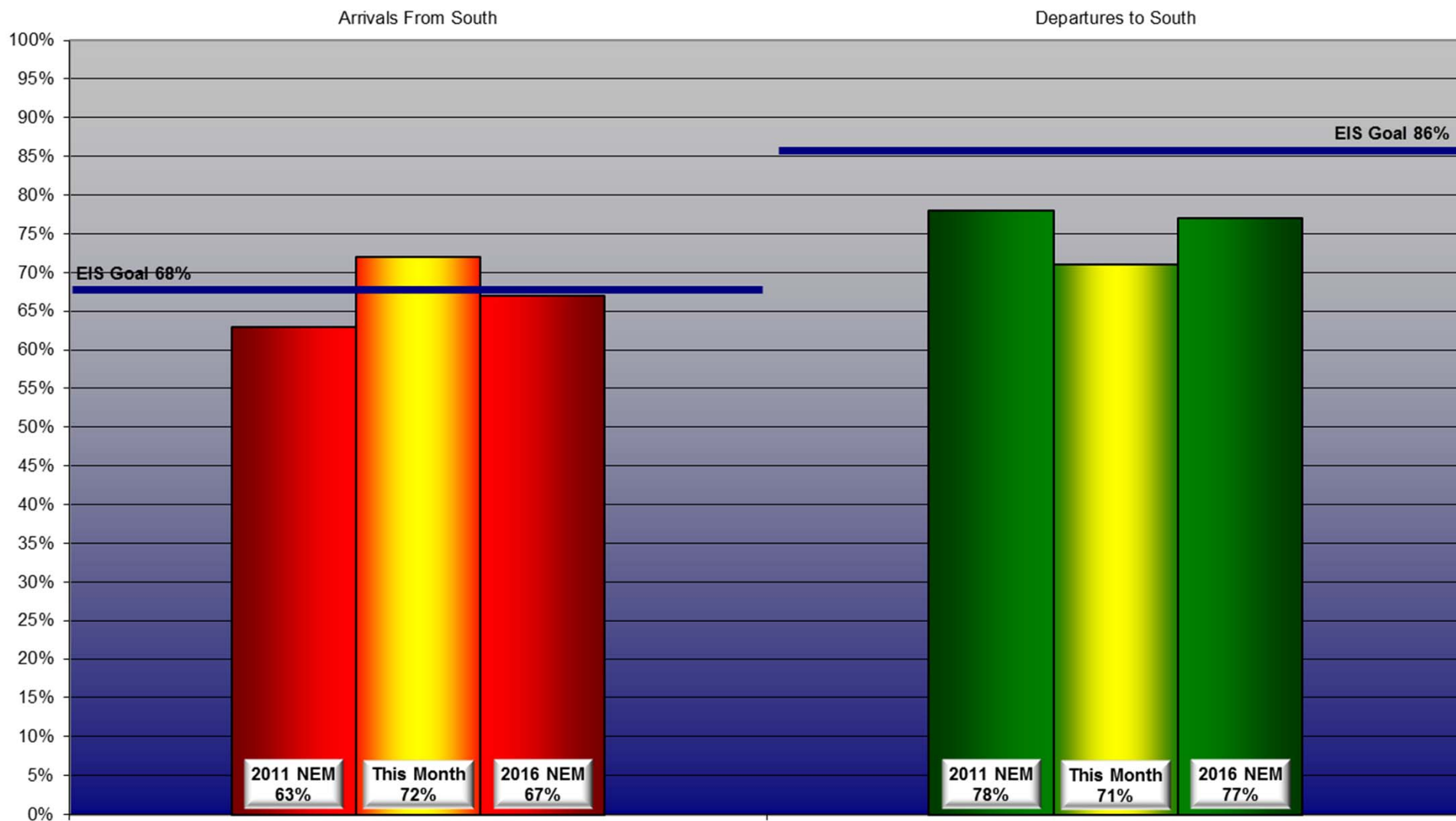
		% of all arrivals from the south										% of all departures to the south									
Date	Day	* in compliance	Runway #						Unknown Runway Use	Notes / Comments		** in compliance	Runway #						Unknown Runway Use	Notes / Comments	
			11	17L	17R	29	35L	35R					11	17L	17R	29	35L	35R			
01/01/14	Wed	9%			68	23		5	4	0	140@3-8knts	100%			40	60				0	
01/02/14	Thu	100%						54	46	0		0%						68	32	0	300-350@5-9knts
01/03/14	Fri	0%			44	56				0	140-150@4-9knts	100%			40	60				0	
01/04/14	Sat																				
01/05/14	Sun																				
01/06/14	Mon	94%			4	2		52	42	0		96%			34	62		1	1	2	0
01/07/14	Tue	0%			46	54				0	120-140@5-6knts	100%			38	62				0	
01/08/14	Wed	9%			38	53		6	3	0	220@5knts,SN	99%			34	65			1	0	
01/09/14	Thu	1%			47	52			1	0	130@5knts	100%			40	60				0	
01/10/14	Fri	0%			50	50				0	170-310@3-13knts,G20,TSF	100%			44	56				0	
01/11/14	Sat																				
01/12/14	Sun																				
01/13/14	Mon	95%			5			57	38	0		91%			37	54		8	1	0	
01/14/14	Tue	99%			1			57	42	0		93%			38	55		6	1	0	
01/15/14	Wed	97%			3			58	39	0		97%			42	55		1	2	0	
01/16/14	Thu	0%			46	54				0	180-250@4-6knts,RA,SN	99%			41	58		1		0	
01/17/14	Fri	95%			2	3		55	40	0		97%			39	58		2	1	0	
01/18/14	Sat																				
01/19/14	Sun																				
01/20/14	Mon	99%				1		55	44	0		0%						65	35	0	260-350@3-5knts,SN
01/21/14	Tue	97%			3			55	42	0		96%			40	56		1	3	0	
01/22/14	Wed	87%			9	4		50	37	0		0%						1	52	47	0
01/23/14	Thu	99%			1			61	38	0		97%			42	55		2	1	0	
01/24/14	Fri	0%			44	56				0	210-220@11-19knts,G26	100%			23	77				0	
01/25/14	Sat																				
01/26/14	Sun																				
01/27/14	Mon	100%						60	40	0		0%						60	40	0	360-010@6-10knts
01/28/14	Tue	94%			5	1		55	39	0		95%			36	59		1	4	0	
01/29/14	Wed	0%			47	53				0	150-180@4-5knts	100%			35	65				0	
01/30/14	Thu	0%			45	55				0	180-220@8-10knts	100%			43	57				0	
01/31/14	Fri	0%			48	52				0	040-060@4-5knts	99%			42	57			1	0	

Preferred Flow

DATIS Reported Conditions Indicate
Support for Non-Preferred Flow

DATIS Reported Conditions Do Not Indicate
Support for Non-Preferred Flow

Monthly Contraflow February 01-28, 2014



Daily Runway Use Summary- February 2014

(from 10:00 PM date list in first column to 7:00 AM the following morning)

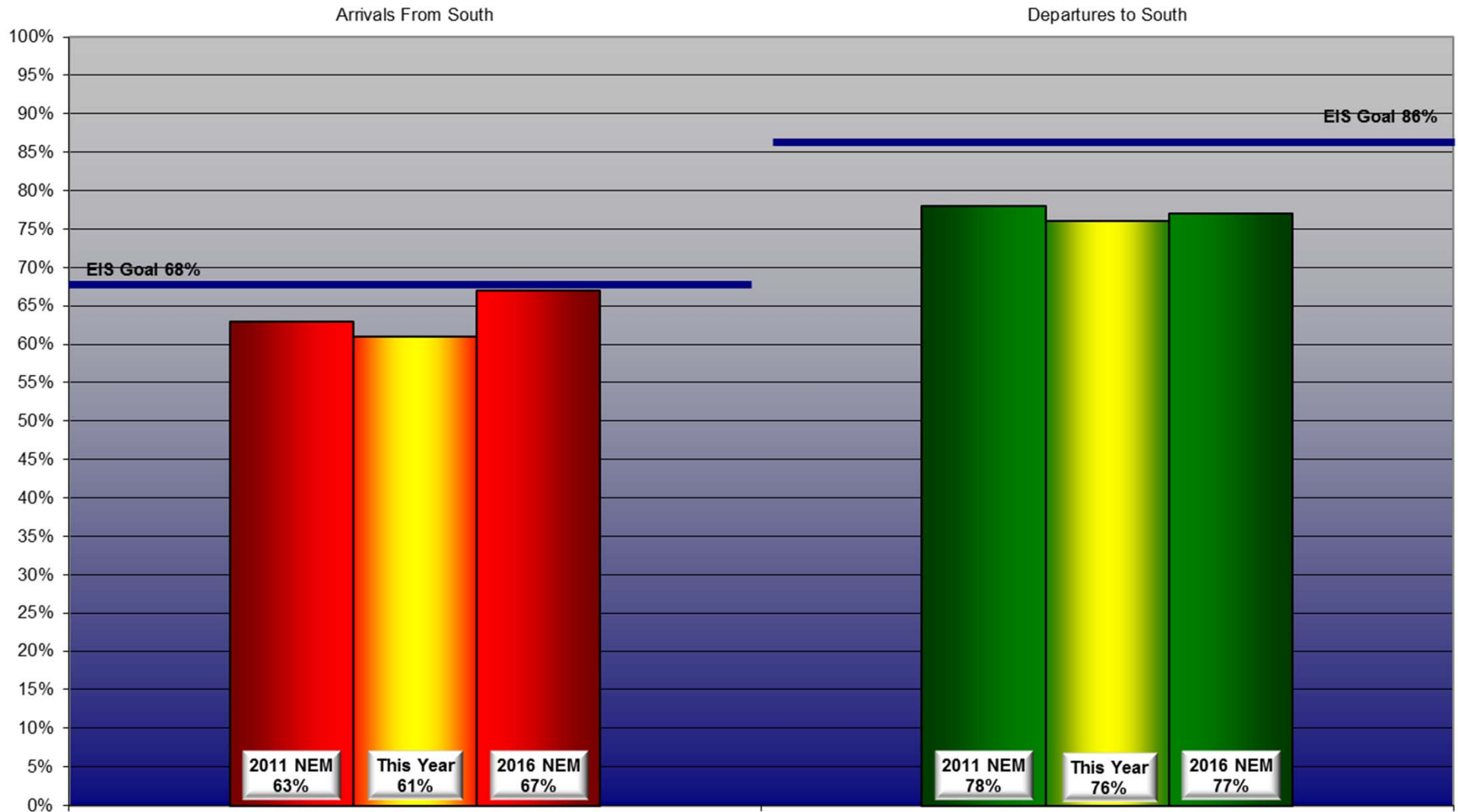
		% of all arrivals from the south										% of all departures to the south											
Date	Day	* in	Runway #								Unknown	Notes / Comments	** in	Runway #								Unknown	Notes / Comments
		compliance	11	17L	17R	29	35L	35R	Use	Runway	compliance			11	17L	17R	29	35L	35R	Use	Runway		
02/03/14	Mon	98%			2			56	42	0		92%			40	52			6	2	0		
02/04/14	Tue	96%			3	1		54	42	0		96%			33	63			2	2	0		
02/05/14	Wed	100%						55	45	0		0%							60	40	0	350-010@5-9knts, SN	
02/06/14	Thu	100%						58	42	0		84%			32	52			8	8	0	280-020@5-8knts	
02/07/14	Fri	93%			3	4		55	38	0		98%			37	61			1	1	0		
02/08/14	Sat																						
02/09/14	Sun																						
02/10/14	Mon	100%						58	42	0		0%							61	39	0	360-010@5-9knts	
02/11/14	Tue	100%						60	40	0		88%			37	51			6	6	0		
02/12/14	Wed	93%			2	5		51	42	0		84%			38	46			9	7	0		
02/13/14	Thu	0%			45	55				0	210-240@5-9knts	100%			43	57					0		
02/14/14	Fri	100%						49	51	0		0%							64	36	0	280-330@9-11knts,G16,SN	
02/15/14	Sat																						
02/16/14	Sun																						
02/17/14	Mon	0%			44	51		5		0	210-260@6-13knts,G21	100%			40	60					0		
02/18/14	Tue	0%			49	51				0	170-210@8-14knts,G21	100%			40	60					0		
02/19/14	Wed	0%			48	52				0	090-130@4knts	100%			40	60					0		
02/20/14	Thu	73%			7	3		17	42	31	0	96%			36	60		2	2		0		
02/21/14	Fri	0%			47	53				0	190-200@6-8knts	100%			38	62					0		
02/22/14	Sat																						
02/23/14	Sun																						
02/24/14	Mon	98%			2			54	44	0		6%			6				49	45	0	330-360@4-12knts	
02/25/14	Tue	100%						55	45	0		0%							56	44	0	310-340@8-15knts,G21,SN	
02/26/14	Wed	95%			3	2		58	37	0		96%			36	60				4	0		
02/27/14	Thu	97%			2	1		57	40	0		87%			33	54			7	6	0		
02/28/14	Fri	91%			3	6		49	42	0		100%			45	55					0		

Preferred Flow

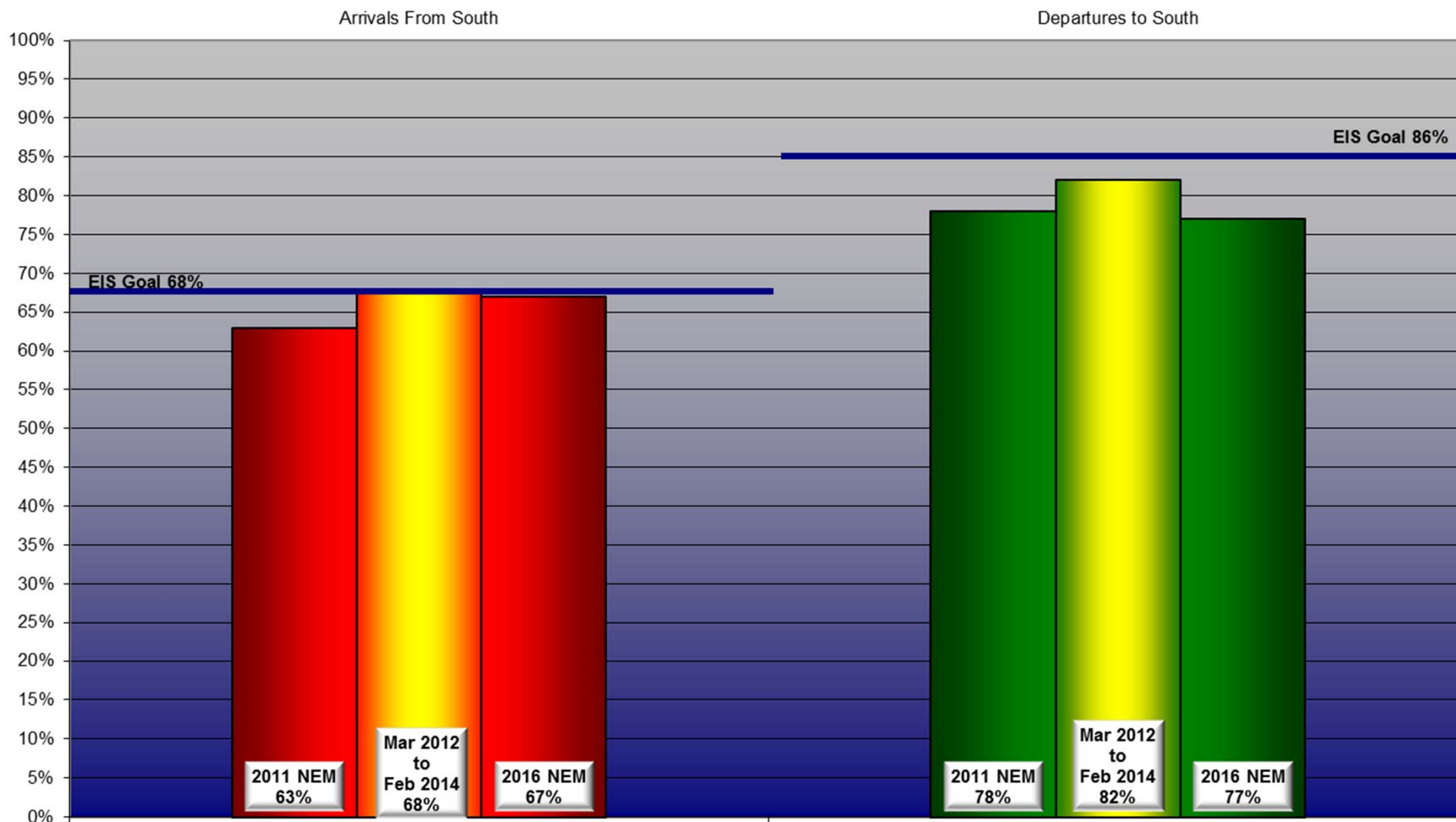
DATIS Reported Conditions Indicate
Support for Non-Preferred Flow

DATIS Reported Conditions Do Not Indicate
Support for Non-Preferred Flow

Yearly Contraflow As of February 28, 2014



Contraflow March 2012 - February 2014



Year-to-Year by Month Percent*

Contraflow

Arrivals From the South (Goal 68%)										Departures to the South (Goal 86%)									
	<u>2007</u>	<u>2008</u>	<u>2009</u>	<u>2010</u>	<u>2011</u>	<u>2012</u>	<u>2013</u>	<u>2014</u>	<u>Avg</u>		<u>2007</u>	<u>2008</u>	<u>2009</u>	<u>2010</u>	<u>2011</u>	<u>2012</u>	<u>2013</u>	<u>2014</u>	<u>Avg</u>
Jan	39%	50%	63%	94%	91%	62%	72%	51%	65%	Jan	80%	80%	74%	54%	71%	80%	65%	81%	73%
Feb	77%	50%	49%	90%	73%	69%	77%	72%	70%	Feb	76%	74%	81%	71%	63%	74%	78%	71%	74%
Mar	52%	52%	46%	80%	52%	61%	87%		61%	Mar	78%	68%	67%	82%	72%	96%	77%		77%
Apr	61%	44%	53%	57%	47%	78%	60%		57%	Apr	67%	92%	84%	84%	83%	76%	89%		82%
May	71%	66%	66%	56%	69%	72%	46%		64%	May	84%	78%	84%	87%	85%	81%	85%		83%
Jun	64%	38%	72%	66%	61%	79%	76%		65%	Jun	85%	93%	81%	96%	93%	87%	80%		88%
Jul	84%	75%	72%	61%	91%	62%	74%		74%	Jul	85%	84%	82%	90%	88%	92%	88%		87%
Aug	69%	92%	61%	59%	82%	49%	84%		71%	Aug	87%	77%	96%	92%	91%	91%	92%		89%
Sep	79%	91%	89%	70%	85%	55%	86%		79%	Sep	89%	73%	82%	73%	64%	92%	87%		80%
Oct	54%	76%	42%	80%	88%	62%	87%		70%	Oct	68%	77%	71%	78%	63%	78%	89%		75%
Nov	58%	66%	74%	85%	55%	84%	73%		71%	Nov	77%	74%	73%	77%	72%	81%	83%		77%
Dec	53%	58%	71%	67%	70%	64%	58%		63%	Dec	74%	62%	65%	78%	65%	67%	71%		69%
Avg	63%	63%	63%	72%	72%	66%	73%	62%		Avg	79%	78%	78%	80%	76%	83%	82%	76%	

*Number is percentage of all operations between 10:00 PM - 7:00 AM



***LOUISVILLE
REGIONAL
AIRPORT
AUTHORITY®***

NOISE COMMENT REPORT
January 2014

Comments (SDF/LOU)

January 2014

Street	Zip Code	Time Received	Time	Airport	Disturbance Type	CNF Quad	Status	Operation or Comment Type ¹	Deviation Type ²	Comments
Parklawn DR	40217	2014-01-03 09:06:49	2014-01-03 09:06:49	SDF	Other	NE	Investigated	LQHP	None	Homeowner called to inquire about the program.
Maylawn AV	40217	2014-01-17 09:06:49	2014-01-17 09:06:49	SDF	Other	NE	Investigated	LQHP	None	It is very disappointing that my home is outside the boundaries. I replaced all my windows a few years ago with double pane glass, as the previous windows all vibrated severely when a plane went over. Even though the new windows don't vibrate, the noise level is still present. The day time is bearable ... it's the night time that is most disruptive to my life. How were these exposure maps created? Who tested the sound levels and when? Just curious that these numbers are still valid with current conditions. Looking forward to receiving the brochure as well. Perhaps you have yet to mail it since you didn't hear back from me. If so, I have yet to receive it.
Maylawn AV	40217	2014-01-17 09:12:49	2014-01-17 09:12:49	SDF	Other	NE	Investigated	LQHP	None	What rating/measurement did the area of my property receive and when was it last measured?
Eastern PKY	40217	2014-01-21 09:12:49	2014-01-21 09:12:49	SDF	Other	NE	Investigated	LQHP	None	Homeowner called wanting to participate in the program.

1. **Standard:** Indicates the "Most Preferred" runway configuration was being utilized at the time of the comment.
Non Standard: Indicates that a "Lesser Preferred" runway configuration was being utilized at the time of the comment.
QHP: QuieterHome Program

2. This column is used to indicate the conditions which most likely necessitated a deviation from the standard procedures.

Comments (SDF/LOU)

January 2014

Street	Zip Code	Time Received	Time	Airport	Disturbance Type	CNF Quad	Status	Operation or Comment Type ¹	Deviation Type ²	Comments
Pigeon Pass RD	40213	2014-01-21 10:12:49	2014-01-21 10:12:49	SDF	Other	NE	Investigated	LQHP	None	Can you please tell me if there are any plans to include the City of Lynnview in this project? I recently purchased a home in the area and the nightly UPS plane traffic is grueling at best. Between the hours of midnight and 6:00 AM nonstop air traffic is hideous. The house rumbles and the noise is intolerable. I would hope that SDF and the City of Louisville have taken into consideration the direct impact of airport traffic on this subdivision, and the adverse impact associated with the future opening of the new runways (East/West). Thank you for any information you can provide.
Lydia ST	40217	2014-01-29 10:12:49	2014-01-21 10:12:49	SDF	Other	NE	Investigated	LQHP	None	Homeowner called regarding his eligibility.
							Received	LQHP	6	
Audubon PKY	40213	2014-01-01 18:51:13	2014-01-01 09:30:00	SDF	Over Use of Runway	NE	Investigated	Non-Standard	None	Suddenly there was all this racket about mid-morning, over the most heavily populated neighborhoods north of the field, with a noticeable tailwind. Could it be they were running reverse-flow operations today, despite this measure having been discontinued some years ago on weekends and holidays? Not to mention its outright disapproval by the FAA in 2009, on operational, not noise-abatement, grounds? It finally stopped shortly before noon, only when the south wind became strong enough to pose a safety hazard for the improper flow. Who are these guys?

1. **Standard:** Indicates the “Most Preferred” runway configuration was being utilized at the time of the comment.
Non Standard: Indicates that a “Lesser Preferred” runway configuration was being utilized at the time of the comment.
QHP: QuieterHome Program

2. This column is used to indicate the conditions which most likely necessitated a deviation from the standard procedures.

Comments (SDF/LOU)

January 2014

Street	Zip Code	Time Received	Time	Airport	Disturbance Type	CNF Quad	Status	Operation or Comment Type ¹	Deviation Type ²	Comments
Minors LN	40219	2014-01-06 18:45:38	2014-01-06 18:45:38	SDF	Too Much Noise	SW	Investigated	Standard	None	I live in Holiday Mobile Park on Minors Lane. The excessive noise from UPS flights at hours when my daughter, son, and I, need to be sleeping, in order to work and learn, make getting proper sleep impossible. We feel like we are living in a torture chamber but we can't afford to move. I'm 72 and my doctor said my health is affected by the lack of rest and my (adopted) 16 year old has headaches attributed to poor sleep due to jet noise. I found your commitment to your 'neighbors' a real joke. While those who lived in houses were relocated, the trailer trash didn't matter.

1. **Standard:** Indicates the “Most Preferred” runway configuration was being utilized at the time of the comment.
Non Standard: Indicates that a “Lesser Preferred” runway configuration was being utilized at the time of the comment.
QHP: QuieterHome Program

2. This column is used to indicate the conditions which most likely necessitated a deviation from the standard procedures.

Comments (SDF/LOU)

January 2014

Street	Zip Code	Time Received	Time	Airport	Disturbance Type	CNF Quad	Status	Operation or Comment Type ¹	Deviation Type ²	Comments
Melford AV	40217	2014-01-21 13:25:07	2014-01-09 08:00:00	SDF	Other	NE	Investigated	Standard	None	<p>I would like to ask for your help in solving a problem in Parkway Village neighborhood. Planes from Louisville International Airport fly over our home making so much noise we can't sleep at night. The planes release high levels of butadiene which is known to cause cancer. Seven people in a three-block radius have developed the disease. As part of the airport sound proofing plan, people living west of Alexander are receiving new doors, windows, furnaces and air conditioning. This is a cost of up to \$50,000 per home. Homes east of Alexander Avenue are getting nothing. I have enclosed 43 signatures of residents east of Alexander Avenue who feel we should receive the same benefits as the other residents of Parkway Village to the west. I have attended meetings about this project where I am told that the noise is not as bad for us as for our neighbors. This is not true. I have photos of UPS planes directly over my home. They are so low you can read the writing on the planes. Some nights we are unable to sleep due to UPS sending planes over at a rate of 3 to 4 minutes apart. Discussions are taking place to increase the rate in the future. I believe the benefits of the sound proofing plan should be extended to all residents of the Parkway Village neighborhood.</p>

1. **Standard:** Indicates the "Most Preferred" runway configuration was being utilized at the time of the comment.
Non Standard: Indicates that a "Lesser Preferred" runway configuration was being utilized at the time of the comment.
QHP: QuieterHome Program

2. This column is used to indicate the conditions which most likely necessitated a deviation from the standard procedures.

Comments (SDF/LOU)

January 2014

Street	Zip Code	Time Received	Time	Airport	Disturbance Type	CNF Quad	Status	Operation or Comment Type ¹	Deviation Type ²	Comments
W. Ormsby	40203	2014-01-09 23:23:33	2014-01-09 22:00:00	SDF	Over Use of Runway	NW	Investigated	Non-Standard	Weather	We have had a lot of planes. We have planes tonight. We had planes last night, planes the night before that. The night of the third we had planes and I could not even see any possible wind. Anyhow, I am calling to report a lot of airplanes on the 3rd, the 8th, 9th and 10th.
Eastern PKY	40217	2014-01-10 00:05:30	2014-01-09 22:00:00	SDF	Over Use of Runway	NE	Investigated	Non-Standard	Weather	The winds seem to be staying below 3 knots but contraflow is not being implemented.
Fetter AV	40217	2014-01-10 00:26:33	2014-01-09 22:00:00	SDF	Too Much Noise	NE	Investigated	Non-Standard	Weather	It is really loud tonight. It is 12:30 AM and I cannot sleep and I have to go to work in the morning. So I am really pissed because there is no wind and there are planes flying over our homes and it is really loud. So I would like an explanation or excuse, whatever you are giving these days.

1. **Standard:** Indicates the "Most Preferred" runway configuration was being utilized at the time of the comment.
Non Standard: Indicates that a "Lesser Preferred" runway configuration was being utilized at the time of the comment.
QHP: QuieterHome Program

2. This column is used to indicate the conditions which most likely necessitated a deviation from the standard procedures.

Comments (SDF/LOU)

January 2014

Street	Zip Code	Time Received	Time	Airport	Disturbance Type	CNF Quad	Status	Operation or Comment Type ¹	Deviation Type ²	Comments
Fetter AV	40217	2014-01-10 00:45:33	2014-01-09 22:00:00	SDF	Too Much Noise	NE	Investigated	Non-Standard	Weather	<p>Since I am up and the airport is wasting my time and my sleep, I am going to go ahead and waste your time. So sleep deprivation after just one night makes a person hungrier and eat more. They are more likely to have an accident. More likely to catch a cold, oh, they start losing brain tissue when they don't sleep, isn't that funny, it makes life so wonderful when you don't have control over this sh**. Hey, you're more likely to get emotional and have less focus, you have memory problems and after a while the risk of death goes up, heart disease and risk of diabetes increases, risk of cancer increases, the risk of obesity increases, really, is this all worth it? To do this to us? So I would like for you to do your job and make sure the contraflow is used. It is all the f*** we have! So call me tomorrow, I will be available, I would love to have a conversation with you Bob because it has been awhile, I am really, really pissed right now because I can't sleep and everybody needs to sleep. So this is not right, it is a total social injustice and it is really wrong and you should feel like sh** today because of what you put people through tonight. I know that this is directed directly at you Bob Slattery. You are it.</p>

1. **Standard:** Indicates the "Most Preferred" runway configuration was being utilized at the time of the comment.
Non Standard: Indicates that a "Lesser Preferred" runway configuration was being utilized at the time of the comment.
QHP: QuieterHome Program

2. This column is used to indicate the conditions which most likely necessitated a deviation from the standard procedures.

Comments (SDF/LOU)

January 2014

Street	Zip Code	Time Received	Time	Airport	Disturbance Type	CNF Quad	Status	Operation or Comment Type ¹	Deviation Type ²	Comments
University RD	40206	2014-01-13 10:19:23	2014-01-12 22:00:00	SDF	Too Much Noise	NE	Investigated	Standard	None	I have been noticing this terrible rumbling noise. I thought it was my water heater getting ready to explode. A few days ago when it finally warmed up a little I opened the door and stuck my head outside and noticed that it was airplane noise. Have you changed something at the airport? I have not noticed this in the past. I have been at home a lot recently recovering from cancer. It seems like this is almost every day.
E Southside CT	40214	2014-01-19 17:44:30	2014-01-19 17:00:00	SDF	Vibrations	SW	Investigated	Standard	None	Have the flight patterns changed here recently? I live on East Southside Court and planes have started to shake my house occasionally. I have always been able to hear the planes but I do not recall them shaking my house. I have lived here for 10 years.
Boulevard Napoleon	40205	2014-01-24 15:39:23	2014-01-20 02:00:00	SDF	Too Much Noise	NE	Investigated	Non-Standard	Weather	Beginning on Monday and running through Thursday, we have experienced severe, ongoing noise between the hours of 2 AM and 5 AM at our home on Boulevard Napoleon in the Belknap neighborhood. This noise shook the windows in our home -- no small feat given we just replaced over 40 windows in the past year due to the ongoing noise problems coming from UPS planes at Louisville International Airport. On more than one night, the noise made it impossible to sleep at night. I would like to know what actions the leadership team at Louisville International Airport is working with UPS, a company with a market cap of 90 billion dollars to improve quality of life for residents in my neighborhood who must endure night-after-night the noise pollution originating at Louisville International Airport.

1. **Standard:** Indicates the "Most Preferred" runway configuration was being utilized at the time of the comment.
Non Standard: Indicates that a "Lesser Preferred" runway configuration was being utilized at the time of the comment.
QHP: QuieterHome Program

2. This column is used to indicate the conditions which most likely necessitated a deviation from the standard procedures.

Comments (SDF/LOU)

January 2014

Street	Zip Code	Time Received	Time	Airport	Disturbance Type	CNF Quad	Status	Operation or Comment Type ¹	Deviation Type ²	Comments
Melford AV	40217	2014-01-29 14:44:23	2014-01-29 14:44:00	SDF	Other	NE	Investigated	Standard	None	I am contacting you on behalf of a homeowner on Melford Avenue in Parkway Village. She stated that she has problems with airport noise and she reached out to the QuieterHome Program but that her home is ineligible as it is outside the boundary. I wanted to check to see if there were any alternative measures she could take or if in the future her home would be included in an additional phase. If you have any other suggestions or advice I could pass along to her, I would greatly appreciate it.
							Received	LRAA	11	

1. **Standard:** Indicates the “Most Preferred” runway configuration was being utilized at the time of the comment.
Non Standard: Indicates that a “Lesser Preferred” runway configuration was being utilized at the time of the comment.
QHP: QuieterHome Program

2. This column is used to indicate the conditions which most likely necessitated a deviation from the standard procedures.

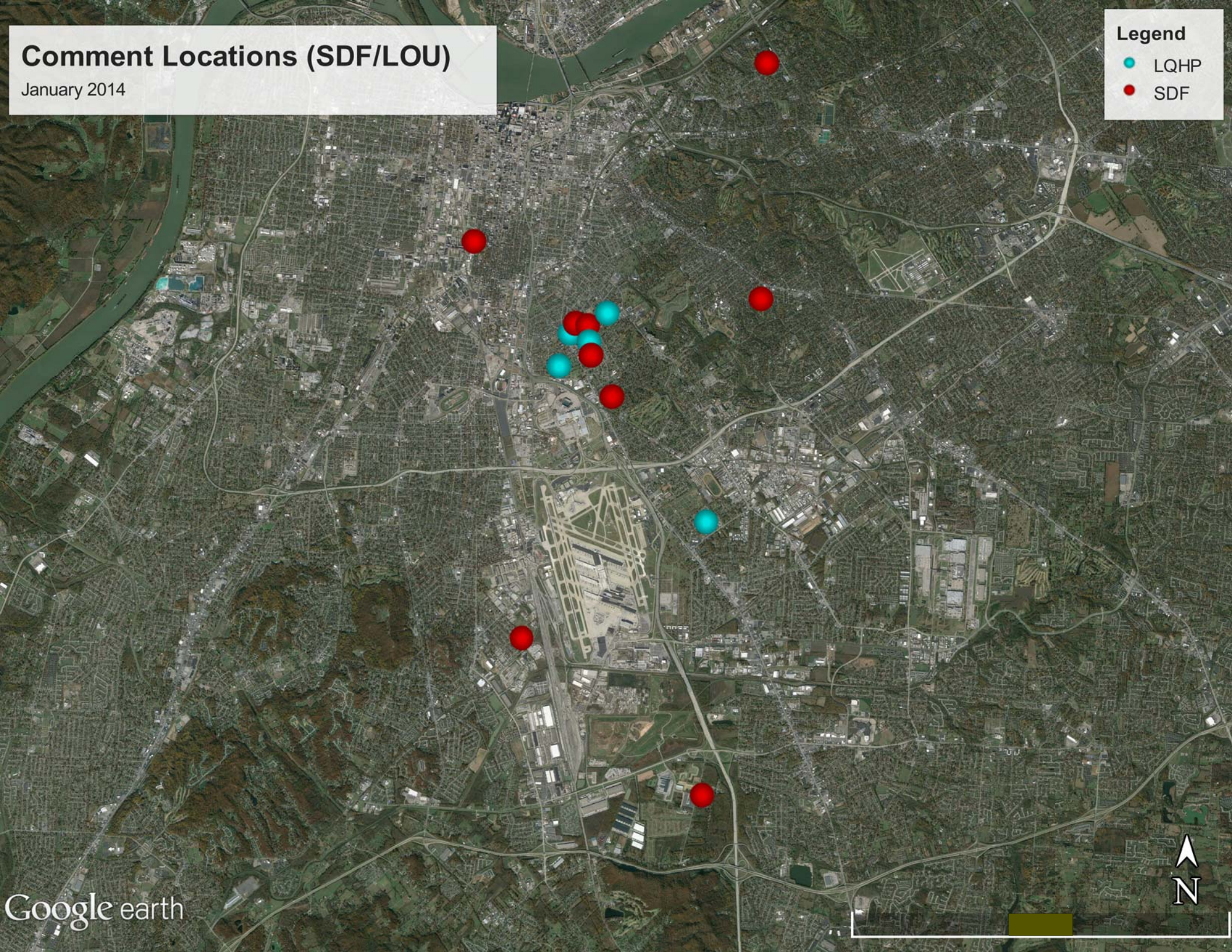
Comment Locations (SDF/LOU)

January 2014

Legend

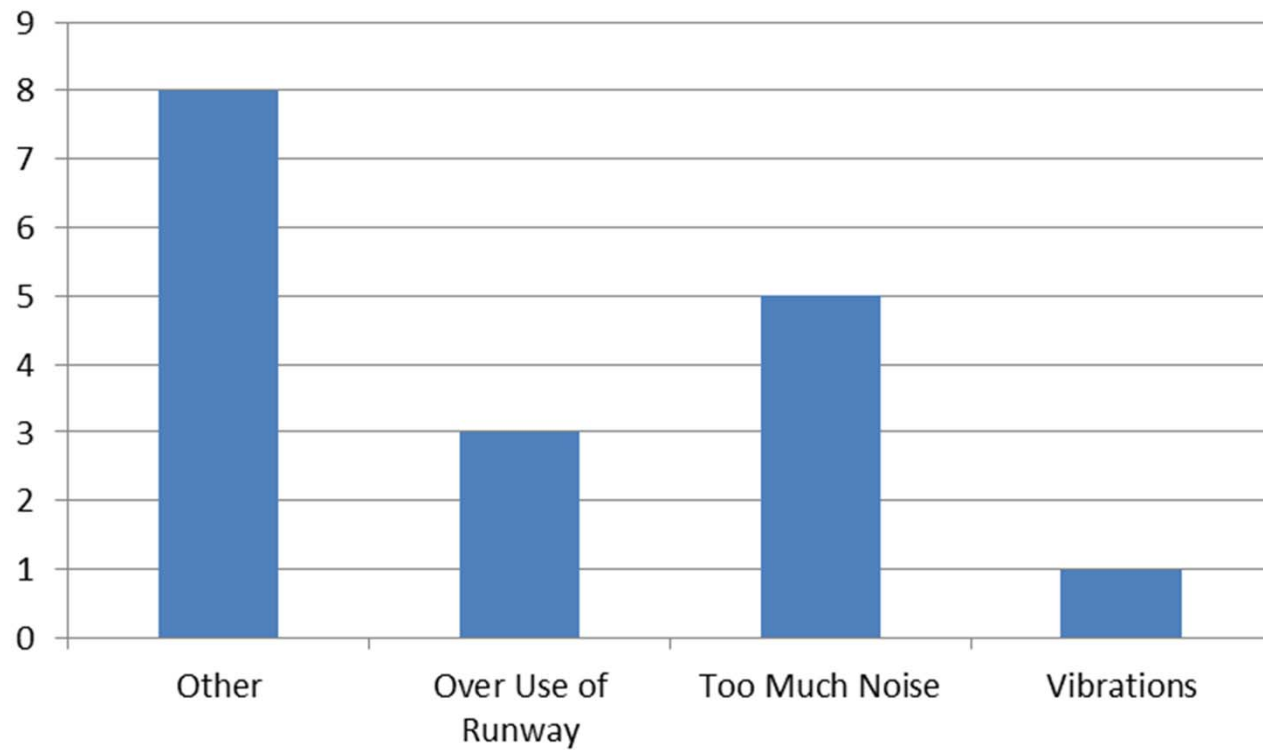
LQHP

SDF



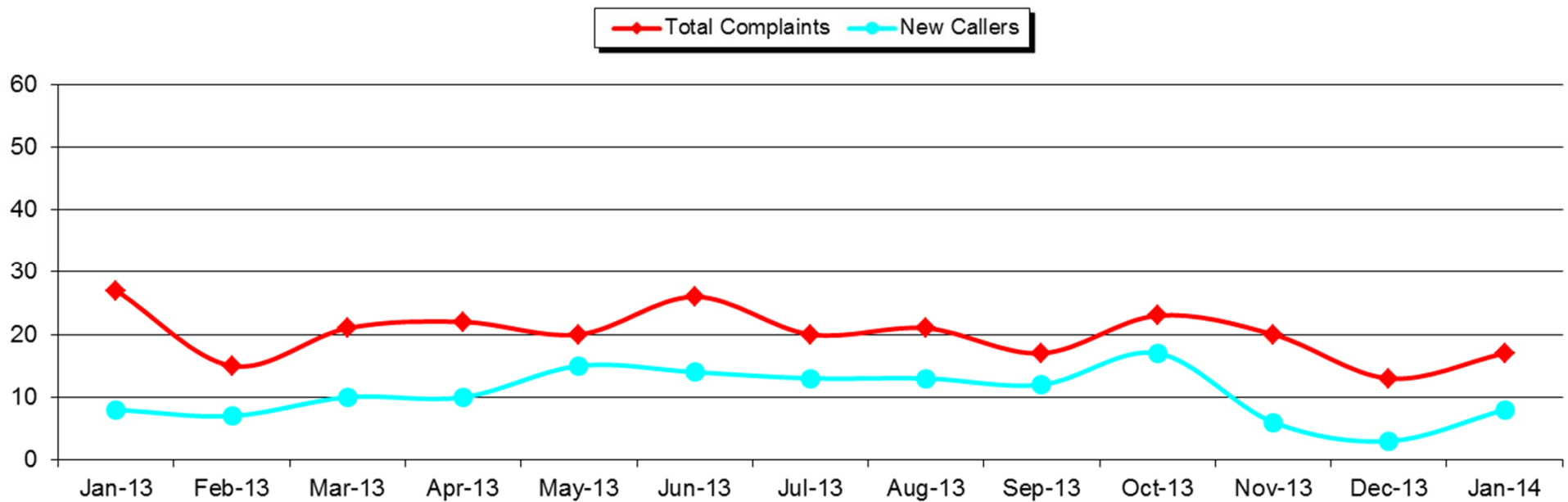
Comment Type* (SDF and LOU)

January 2014



New Address/Comments per Month (SDF and LOU)

January 2014





***LOUISVILLE
REGIONAL
AIRPORT
AUTHORITY®***

NOISE COMMENT REPORT
February 2014

Comments (SDF/LOU)

February 2014

Street	Zip Code	Time Received	Time	Airport	Disturbance Type	CNF Quad	Status	Operation or Comment Type ¹	Deviation Type ²	Comments
Pigeon Pass RD	40213	2014-02-03 08:33:07	2014-02-03 08:33:07	SDF	Other	NE	Investigated	LQHP	None	Can you please tell me what system you are adding my information to and if there is any possibility that there will be funding available in the near future for soundproofing and insulation of homes in the area to better accommodate the air traffic.
Pigeon Pass RD	40213	2014-02-04 08:33:07	2014-02-04 09:02:10	SDF	Other	NE	Investigated	LQHP	None	I would like to know how often the DNL contour is checked. I did read through the information on the home page for flylouisville.com and I saw where it stated that the normal levels in a metropolitan area were 55. I would be anxious to determine what the daytime level is for my neighborhood and what the nighttime level is as well.
Alexander AV	40217	2014-02-07 08:40:07	2014-02-07 08:40:07	SDF	Other	NE	Investigated	LQHP	None	Homeowner called to see if her property was in the program.
Larue AV	40213	2014-02-11 08:45:07	2014-02-11 08:45:07	SDF	Other	NE	Investigated	LQHP	None	Homeowner called to inquire about eligibility.
Lucas CT		2014-02-14 08:45:07	2014-02-14 08:45:07	SDF	Other	NE	Investigated	LQHP	None	Homeowner called to see if eligible. She knows we did homes in the area. Her home shakes just as much as the ones that were done.

1. **Standard:** Indicates the “Most Preferred” runway configuration was being utilized at the time of the comment.
Non Standard: Indicates that a “Lesser Preferred” runway configuration was being utilized at the time of the comment.
QHP: QuieterHome Program

2. This column is used to indicate the conditions which most likely necessitated a deviation from the standard procedures.

Comments (SDF/LOU)

February 2014

Street	Zip Code	Time Received	Time	Airport	Disturbance Type	CNF Quad	Status	Operation or Comment Type ¹	Deviation Type ²	Comments
Ellsworth AV	40217	2014-02-20 09:45:07	2014-02-20 09:45:07	SDF	Other	NE	Investigated	LQHP	None	I am writing this email as I am lying in my father's house trying to sleep. The problem is I keep hearing roar after rumble and feeling the house shake from all the airplanes flying over. I just recently learned about the sound insulation program and was curious to see if his house was eligible. My dad doesn't pay attention to the mail very much so I am wondering if maybe he could have overlooked something. But anyhow, I believe he would have been eligible because we know a family just two blocks away that were eligible. This program seems like it could really help this house and the living.
Farmdale AV	40213	2014-02-21 11:45:07	2014-02-21 11:45:07	SDF	Other	NE	Investigated	LQHP	None	I recently purchased a home on Farmdale Avenue. I was wondering how a home is eligible for the quiet home program?
Lone Oak TRL	40214	2014-02-24 11:45:07	2014-02-24 11:45:07	SDF	Other	NW	Investigated	LQHP	None	I was wondering if my home was within the boundaries for receiving any type of noise reduction services? We get a lot of noise during the evening hours and especially late night hours due to UPS flights. When the peak times of year arrive there will be several consecutive hours of noise from the airport. Sometimes my storm windows even shake! Just wanted to look into any and all resources that were available. Thanks for any and all help you can offer.
							Received	LQHP	8	

1. **Standard:** Indicates the "Most Preferred" runway configuration was being utilized at the time of the comment.
Non Standard: Indicates that a "Lesser Preferred" runway configuration was being utilized at the time of the comment.
QHP: QuieterHome Program

2. This column is used to indicate the conditions which most likely necessitated a deviation from the standard procedures.

Comments (SDF/LOU)

February 2014

Street	Zip Code	Time Received	Time	Airport	Disturbance Type	CNF Quad	Status	Operation or Comment Type ¹	Deviation Type ²	Comments
Dresden AV	40215	2014-02-10 09:21:04	2014-02-03 00:00:01	SDF	Other	NW	Investigated	Standard	None	<p>Could you please help me solve a mystery? I live over here by the airport. I have been trying to figure out for the last year why International Airport have to click my heating furnace on in my house to get a plane off to fly. I no it sound silly but its truth listening to this. I can tell when a plane ready to take off it make a knock all on my roof and meter. If I set my furnace a certain temper in my house. I can shut that air plane down for the hold day. I have done it lot of time. I hate to have them people sitting on that plane in the cold. I have call about it nothing done about it. You might not believe me but it's truth. I be glad to show you it can be done. I bet if you ask some of them air plane pilot about been strand on the runway I bet they will tell you they have. I had my furnace put in 2007 so how do they have asset to my thermostat. I had LGE out to check meter outside were plane take off hit that meter all the time. I think more is going on at that airport. UPS plane don't I guess because there more heavy, but something just at right. I have wrote TV station about my phone service in the summer when the plane take off they will call my home phone all day long, so I switch over to ATT. I'm very satisfy. I had a skylight but had it close off back in August, its story about that you will not believe. I am not crazy what so every so don't think I don't want to give you ideas. I would like to set down a talk to you about this. I feel like I'm ill in my on home...(truncated for space)</p>

1. **Standard:** Indicates the "Most Preferred" runway configuration was being utilized at the time of the comment.
Non Standard: Indicates that a "Lesser Preferred" runway configuration was being utilized at the time of the comment.
QHP: QuieterHome Program

2. This column is used to indicate the conditions which most likely necessitated a deviation from the standard procedures.

Comments (SDF/LOU)

February 2014

Street	Zip Code	Time Received	Time	Airport	Disturbance Type	CNF Quad	Status	Operation or Comment Type ¹	Deviation Type ²	Comments
Audubon PKY	40213	2014-02-10 18:33:48	2014-02-03 13:00:00	SDF	Over Use of Runway	NE	Investigated	Non-Standard	None	The latest in a series of similar incidents in recent weeks took place Monday, 3 Feb, as northbound departures roared overhead in the nearby neighborhoods all afternoon and evening, as if a north wind were exceeding safety tolerances limiting the preferred south flow. but repeated checks of both ASOS and ATIS over this period consistently yielded the same result: "calm." Has there been a change in the rules? Or is this just another case of the pressing need for long-promised modern decision aids to help cue operations to conform to extant conditions, and thus relieve the unwarranted impact on the community?
Mccoy AV	40215	2014-02-12 00:15:48	2014-02-12 00:01:00	SDF	Too Much Noise	NW	Investigated	Non-Standard	Ops	I have been hearing the jets again. I don't know if it is because of the winds or not. I just wanted to call and report it to you. I had them three times I think. Twice I was up and it woke me up once.
Montana	40208	2014-02-12 11:30:48	2014-02-12 04:00:00	SDF	Too Much Noise	NW	Investigated	Standard	None	We cannot sleep when the airplanes come over. My mother is elderly and it scares her sometimes. I have dealt with this as long as we can. This has been going on for a while (2 years or so) but seems to have gotten worse around December. It usually happens at about 3:30, 4:00, 5:00 and 6:00 AM. This morning, one came over at 4:00 AM that was really bad.

1. **Standard:** Indicates the "Most Preferred" runway configuration was being utilized at the time of the comment.
Non Standard: Indicates that a "Lesser Preferred" runway configuration was being utilized at the time of the comment.
QHP: QuieterHome Program

2. This column is used to indicate the conditions which most likely necessitated a deviation from the standard procedures.

Comments (SDF/LOU)

February 2014

Street	Zip Code	Time Received	Time	Airport	Disturbance Type	CNF Quad	Status	Operation or Comment Type ¹	Deviation Type ²	Comments
Fetter AV	40217	2014-02-13 03:16:48	2014-02-13 03:00:00	SDF	Over Use of Runway	NE	Investigated	Non-Standard	Ops	It is 3 in the morning and planes are flying over my house for some reason even though there is no wind according to your website. I would like to know what excuse you have this time for not using contraflow. Again proving that this is not effective in keeping this community quiet. So we can sleep and function.
Mccoy AV	40215	2014-02-13 03:55:01	2014-02-13 03:30:00	SDF	Too Much Noise	NW	Investigated	Non-Standard	Ops	About a minute ago had a plane go over and wake me up. Sorry to bother you. I know you are home sleeping and I am calling your office.
Mccoy AV	40215	2014-02-13 03:57:01	2014-02-13 03:30:00	SDF	Noise At Wrong Time	NW	Investigated	Non-Standard	Ops	It is 3:55 AM I had another one go over and here comes another one. I have been up watching TV because I cannot sleep. I am up on the second floor in my suite. The rest of the family is hearing it also. I don't know what to say.
Mccoy AV	40215	2014-02-13 04:07:01	2014-02-13 03:30:00	SDF	Noise At Wrong Time	NW	Investigated	Non-Standard	Ops	At 4:03 and 4:04 AM one more came over. They are not directly over but they are just southwest. I mean when you hear a vibration you know here comes another one. I can hear another one now. This is pretty torturous. Here is my issue, I have an aortic aneurism, it's almost 5mm and I'm getting ready to have surgery, I have tumors in both lungs. I should not have to put up with this because somebody else decided to put the airport in the middle of town. It is like somebody standing outside your bedroom window smacking cymbals. There is just nothing right about this.

1. **Standard:** Indicates the "Most Preferred" runway configuration was being utilized at the time of the comment.
Non Standard: Indicates that a "Lesser Preferred" runway configuration was being utilized at the time of the comment.
QHP: QuieterHome Program

2. This column is used to indicate the conditions which most likely necessitated a deviation from the standard procedures.

Comments (SDF/LOU)

February 2014

Street	Zip Code	Time Received	Time	Airport	Disturbance Type	CNF Quad	Status	Operation or Comment Type ¹	Deviation Type ²	Comments
Mccoy AV	40215	2014-02-13 04:08:01	2014-02-13 03:30:00	SDF	Noise At Wrong Time	NW	Investigated	Non-Standard	Ops	Right after I hung up, I heard another vibration you know the same thing. Here comes another one. On my mini refrigerator I get little vibrations on my medicine bottles.
Mccoy AV	40215	2014-02-13 04:12:01	2014-02-13 04:00:00	SDF	Noise At Wrong Time	NW	Investigated	Non-Standard	Ops	Well Bob one more came over and you know why I have not been calling you is that I am on some pain medication and some other medications, and it just happens to be that the last couple of days I have been weaning myself back down off of this medication and I am more alert. I guess that is why I have not been hearing them, but that does not make it any better. There are a whole bunch of people around me who are in the same situation. It is not like they are 10 feet above my roof but when you hear the wind pressure from them and the vibration it does become pretty irritating. I don't know how close you live to the airport but I have a house that is insulated well and the windows are six years old. I have done about all I can do to the house. I have put probably \$25,000 into it. There is just no reason.

1. **Standard:** Indicates the "Most Preferred" runway configuration was being utilized at the time of the comment.
Non Standard: Indicates that a "Lesser Preferred" runway configuration was being utilized at the time of the comment.
QHP: QuieterHome Program

2. This column is used to indicate the conditions which most likely necessitated a deviation from the standard procedures.

Comments (SDF/LOU)

February 2014

Street	Zip Code	Time Received	Time	Airport	Disturbance Type	CNF Quad	Status	Operation or Comment Type ¹	Deviation Type ²	Comments
Mccoy AV	40215	2014-02-13 04:56:01	2014-02-13 04:30:00	SDF	Noise At Wrong Time	NW	Investigated	Standard	None	Hey Bob, you know if I would have called you every time that I heard the planes going over this morning I would have thirty messages on your machine. It is one hour later and it is still going on. This is almost as bad as having young kids sitting outside on the street corner blaring their music. I would not put up with that. It is impossible, there is nothing I can do to stop this. I mean nothing. We are on our second year now and I am not supposed to be stressed out and getting my blood pressure worked up or this aortic aneurism will bust. But not being able to sleep kind of makes you irritated and not being able to do anything about it kind of ticks you off. I know you have very little control over what the UPS air traffic controllers do and it is impossible to stop commerce. But at some point you have to make relief for the people that you bother and you are bothering me. If you are bothering me over here then there are a lot of other souls.
Mccoy AV	40215	2014-02-13 08:18:01	2014-02-13 08:00:00	SDF	Noise At Wrong Time	NW	Investigated	Standard	None	I took some medication and went to sleep about 5:30 AM. I am up now and one just came over about 8:16 AM on my clock. You are probably on the phone listening to my terrible messages. I am sorry to bother you. I am not looking for a response because there is not much that you can do at this point other than document it. But at some point something has to be done. This just cannot keep happening constantly. Something has to be done.

1. **Standard:** Indicates the "Most Preferred" runway configuration was being utilized at the time of the comment.
Non Standard: Indicates that a "Lesser Preferred" runway configuration was being utilized at the time of the comment.
QHP: QuieterHome Program

2. This column is used to indicate the conditions which most likely necessitated a deviation from the standard procedures.

Comments (SDF/LOU)

February 2014

Street	Zip Code	Time Received	Time	Airport	Disturbance Type	CNF Quad	Status	Operation or Comment Type ¹	Deviation Type ²	Comments
Mccoy AV	40215	2014-02-13 10:21:01	2014-02-13 10:00:00	SDF	Other	NW	Investigated	Standard	None	I would like to talk with you and explain my situation because we are over here and even though I do have some medical issues I have been working really hard on changing the area. I have got some grants coming in and there are some other good things happening. We are on track to change this little area over here into something similar to a St. Mathews type situation with a young vibrant neighborhood but we can't do this if we have planes waking us up in the middle of the night. I would like to really sit down and talk and try to resolve this situation because there is no way no matter how much I can beautify this area or as much as we cut down on crime, put parks in and redo things and make it better for families to come in and have airplanes flying over their house with all of this rattling noise.
Fetter AV	40217	2014-02-14 00:29:04	2014-02-14 00:00:01	SDF	Noise At Wrong Time	NE	Investigated	Non-Standard	None	It is past midnight the planes are roaring over.
Mccoy AV	40215	2014-02-17 05:10:04	2014-02-17 04:45:01	SDF	Noise At Wrong Time	NW	Investigated	Standard	None	At about 5:06 AM a plane came over. It sounded like it was just due east of me.
Mccoy AV	40215	2014-02-17 06:20:04	2014-02-17 06:00:01	SDF	Too Much Noise	NW	Investigated	Standard	None	At around 6:16 or 6:17 AM it sounded like one came down Taylor Blvd. Hopefully that is the last one.

1. **Standard:** Indicates the "Most Preferred" runway configuration was being utilized at the time of the comment.
Non Standard: Indicates that a "Lesser Preferred" runway configuration was being utilized at the time of the comment.
QHP: QuieterHome Program

2. This column is used to indicate the conditions which most likely necessitated a deviation from the standard procedures.

Comments (SDF/LOU)

February 2014

Street	Zip Code	Time Received	Time	Airport	Disturbance Type	CNF Quad	Status	Operation or Comment Type ¹	Deviation Type ²	Comments
Fetter AV	40217	2014-02-19 23:50:54	2014-02-19 22:00:00	SDF	Noise At Wrong Time	NE	Investigated	Non-Standard	None	It is 10 minutes to midnight on Wednesday night. I have planes flying over the house and according to your website the wind is 6 mph coming from the east. So there is no reason why contraflow should not be used right now. Another example of something that is not working. You need to come up with something else that works. When they don't follow the rules it really blows and it really sucks for those of us who have to deal with it. So, I guess this would be a complaint to air traffic control and they have to explain themselves.
Mccoy AV	40215	2014-02-20 04:11:54	2014-02-20 02:00:00	SDF	Noise At Wrong Time	NW	Investigated	Standard	None	The noise started about 2:28 AM I guess. It has continued here until now. I am taking a guess that it is the weather that is coming in today. But you are the man with a plan so you have a nice day.
Administration DR		2014-02-20 23:53:39	2014-02-20 23:53:53	SDF	Too Much Noise	UNK	Investigated	Standard	None	The aircraft are so annoying in our area, kids can't sleep.
Administration DR		2014-02-21 00:18:39	2014-02-21 00:18:53	SDF	Aircraft Off Course	UNK	Investigated	Standard	None	Please change your aircraft's route because it is so annoying.

1. **Standard:** Indicates the "Most Preferred" runway configuration was being utilized at the time of the comment.
Non Standard: Indicates that a "Lesser Preferred" runway configuration was being utilized at the time of the comment.
QHP: QuieterHome Program

2. This column is used to indicate the conditions which most likely necessitated a deviation from the standard procedures.

Comments (SDF/LOU)

February 2014

Street	Zip Code	Time Received	Time	Airport	Disturbance Type	CNF Quad	Status	Operation or Comment Type ¹	Deviation Type ²	Comments
Fetter AV	40217	2014-02-25 09:50:04	2014-02-25 04:00:01	SDF	Over Use of Runway	NE	Investigated	Non-Standard	Weather	It is Tuesday morning. I am calling to find out what excuse the airport has for denying me sleep last night. At 4:30 in the morning the house is rumbling, the planes were flying over our houses at 3 in the morning and then again at 6 so I got no sleep last night and it really, really sucks along with thousands of other people who got screwed while UPS, and the airport, and the city, and the county, and the state all made money. Which really f***ing sucks. So, again, call me and give me your best excuse.
Audubon PKY	40213	2014-02-26 10:25:46	2014-02-26 03:00:00	SDF	Too Much Noise	NE	Investigated	Non-Standard	Weather	I am a resident of Audubon Park, and I would like to speak with someone about the unusually loud airplane noise this week, especially during the early morning hours of Feb. 26, 2014. I am accustomed to louder noise during the winter months when the air is thinner and there are no leaves on the trees to help absorb the sound. But this recent noise was above anything I have heard in the past.
							Received	LRAA	22	

1. **Standard:** Indicates the “Most Preferred” runway configuration was being utilized at the time of the comment.
Non Standard: Indicates that a “Lesser Preferred” runway configuration was being utilized at the time of the comment.
QHP: QuieterHome Program

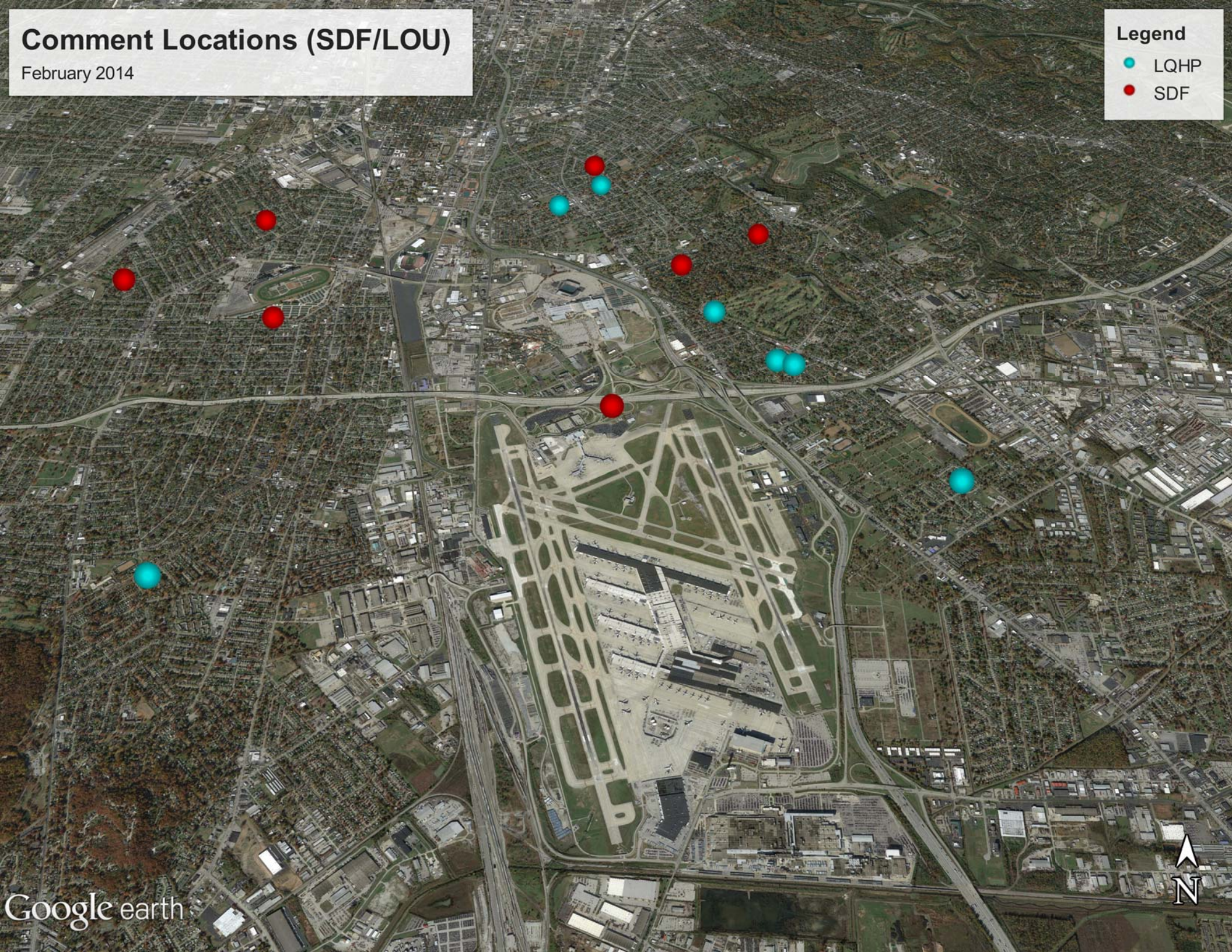
2. This column is used to indicate the conditions which most likely necessitated a deviation from the standard procedures.

Comment Locations (SDF/LOU)

February 2014

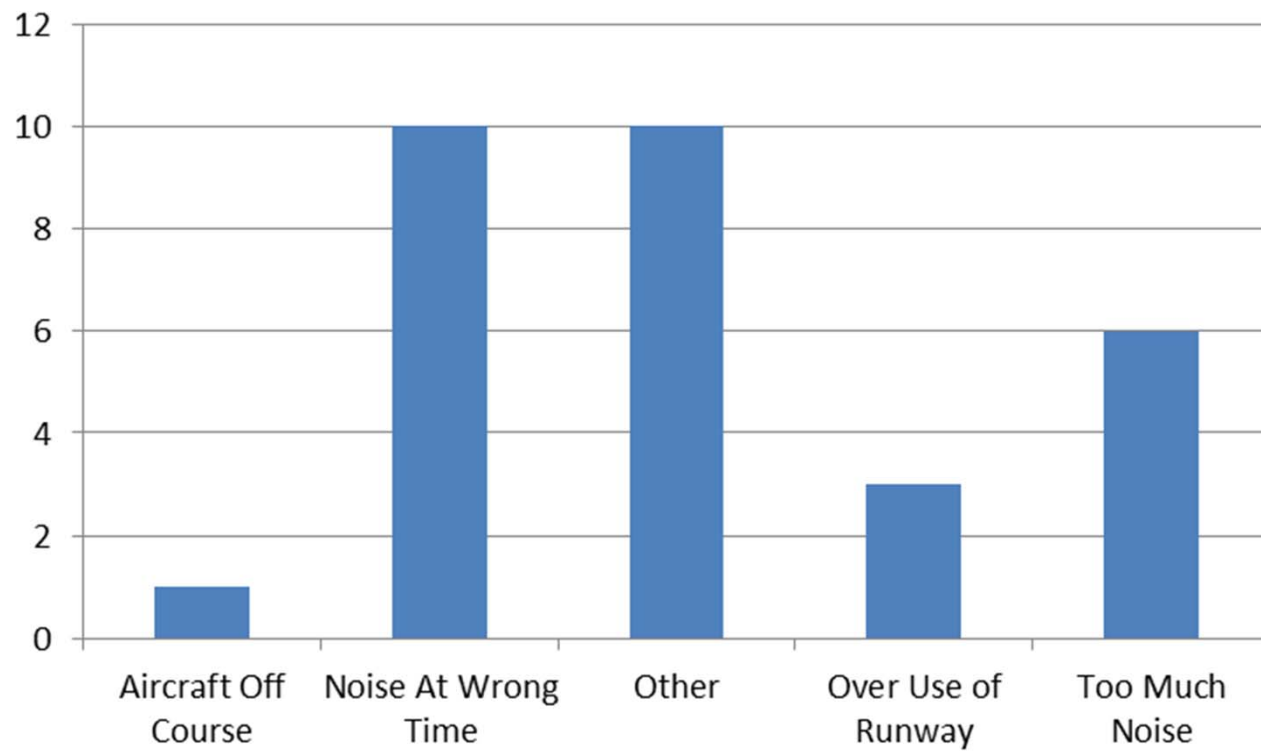
Legend

- LQHP
- SDF



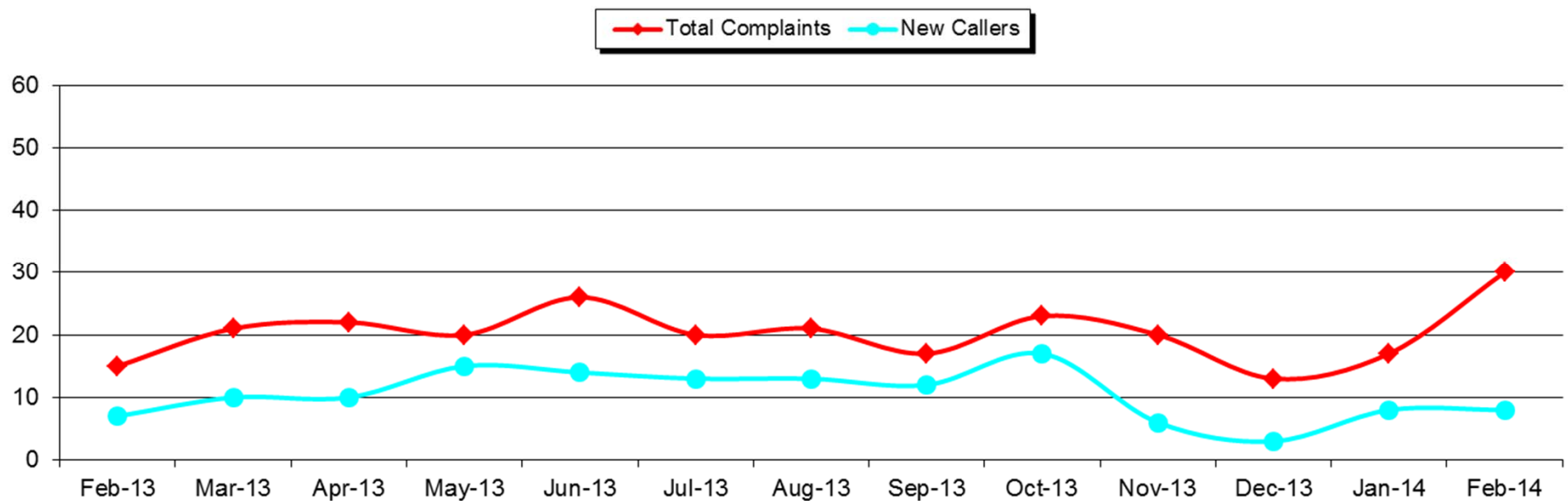
Comment Type* (SDF and LOU)

February 2014



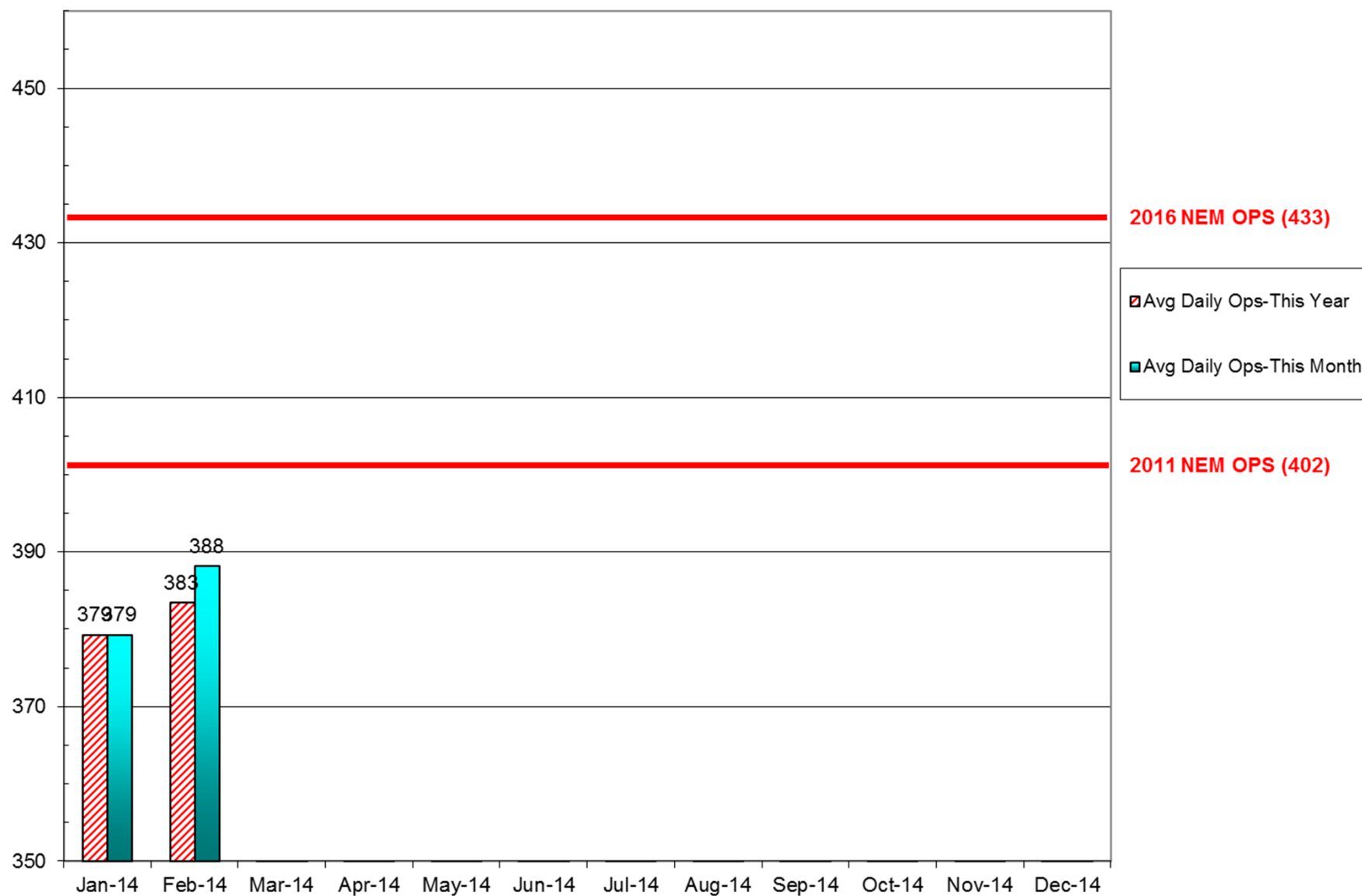
New Address/Comments per Month (SDF and LOU)

February 2014



Operations (SDF)

As of February 28, 2014



Source: Louisville <http://www.flylouisville.com/regional-airport-authority/reports-and-statistics/>

Daily Runway Use Uncorrected (SDF) January 2014

[illegible]

Daily Runway Use (SDF)

Tower Comments January 2014

Day	Date	Time	Comment
wed	1-Jan-14	0000-0230	Wind 1907, 2130 on final
wed	1-Jan-14	1130-1230	Wind 2209
thu	2-Jan-14		
fri	3-Jan-14		
sat	4-Jan-14		
sun	5-Jan-14		
mon	6-Jan-14		
tue	7-Jan-14	1100-1230	Wind 2209
tue	7-Jan-14	2200-2400	Wind 1407, 2020 on final
wed	8-Jan-14	0000-0230	Wind 1509
thu	9-Jan-14	0930-1230	Wind 1606, snow/wet runways
fri	10-Jan-14		
sat	11-Jan-14	1800-2030	Wind 2912G18, went south @ 2012
sun	12-Jan-14		
mon	13-Jan-14		
tue	14-Jan-14	0930-1230	Wind 2109, forecast 2212G20
wed	15-Jan-14		
thu	16-Jan-14		
fri	17-Jan-14	1500-2130	Wind 2915 wet runways
sat	18-Jan-14		
sun	19-Jan-14	0400-0500	Wind 3110
mon	20-Jan-14	1930-2130	Wind 0212
tue	21-Jan-14		
wed	22-Jan-14		
thu	23-Jan-14	1500-1630	Wind 2912, some snow on rwys
fri	24-Jan-14	0930-1230	Wind 2007, forecast 2010G21
sat	25-Jan-14		
sun	26-Jan-14		
mon	27-Jan-14	1900-2130	Wind 3210
tue	28-Jan-14	0730-0900	Wind 3608
wed	29-Jan-14	2200-2400	Wind 1909
thu	30-Jan-14	0000-0230	Wind 1808
thu	30-Jan-14	0930-1030	Wind 1711
fri	31-Jan-14	1130-1230	Wind 2010
fri	31-Jan-14	2200-2400	Wind on final 2029

Daily Runway Use Uncorrected (SDF) February 2014

Flow	Time	Sat 2/1	Sun 2/2	Mon 2/3	Tue 2/4	Wed 2/5	Thu 2/6	Fri 2/7	Sat 2/8	Sun 2/9	Mon 2/10	Tue 2/11	Wed 2/12	Thu 2/13	Fri 2/14	Sat 2/15	Sun 2/16	Mon 2/17	Tue 2/18	Wed 2/19	Thu 2/20	Fri 2/21	Sat 2/22	Sun 2/23	Mon 2/24	Tue 2/25	Wed 2/26	Thu 2/27	Fri 2/28	Time	
North Flow	0:00																													0:00	
	0:30												XXX		XXX							XXX								0:30	
	1:00																													1:00	
	1:30																													1:30	
	2:00																													2:00	
	2:30																													2:30	
South Flow	3:00													XXX																3:00	
	3:30																													3:30	
	4:00												XXX	XXX							XXX									4:00	
	4:30													XXX																4:30	
	5:00													XXX					XXX							XXX				5:00	
	5:30																													5:30	
	6:00																													6:00	
	6:30																													6:30	
	7:00																														7:00
	7:30																														7:30
	8:00																														8:00
	8:30																														8:30
9:00																														9:00	
North Flow	9:30																													9:30	
	10:00																													10:00	
	10:30													XXX													XXX			10:30	
	11:00																													11:00	
	11:30																													11:30	
	12:00																													12:00	
12:30																													12:30		
South Flow	13:00																													13:00	
	13:30																													13:30	
	14:00																													14:00	
	14:30																													14:30	
	15:00																													15:00	
	15:30																													15:30	
	16:00																													16:00	
	16:30																													16:30	
	17:00																													17:00	
	17:30																													17:30	
	18:00																													18:00	
	18:30																													18:30	
	19:00																													19:00	
	19:30																													19:30	
20:00																													20:00		
20:30																													20:30		
21:00																													21:00		
21:30			XXX																										21:30		
North Flow	22:00																													22:00	
	22:30																													22:30	
	23:00																													23:00	
	23:30																													23:30	
	0:00																			XXX	XXX									0:00	
Flow	Time	Sat 2/1	Sun 2/2	Mon 2/3	Tue 2/4	Wed 2/5	Thu 2/6	Fri 2/7	Sat 2/8	Sun 2/9	Mon 2/10	Tue 2/11	Wed 2/12	Thu 2/13	Fri 2/14	Sat 2/15	Sun 2/16	Mon 2/17	Tue 2/18	Wed 2/19	Thu 2/20	Fri 2/21	Sat 2/22	Sun 2/23	Mon 2/24	Tue 2/25	Wed 2/26	Thu 2/27	Fri 2/28	Time	
			Preferred Flow																												
			DATIS Reported Conditions Indicate Support for Non-Preferred Flow																												
			DATIS Reported Conditions <u>Do Not</u> Indicate Support for Non-Preferred Flow																												
			South Flow is Preferred Flow from 09:30 Saturday - 09:30 Monday																												
		XXX	Complaint																												
			Source: Louisville International Airport Aircraft Flight Tracking and Noise Management System (AFTNMS)																												

Daily Runway Use (SDF)

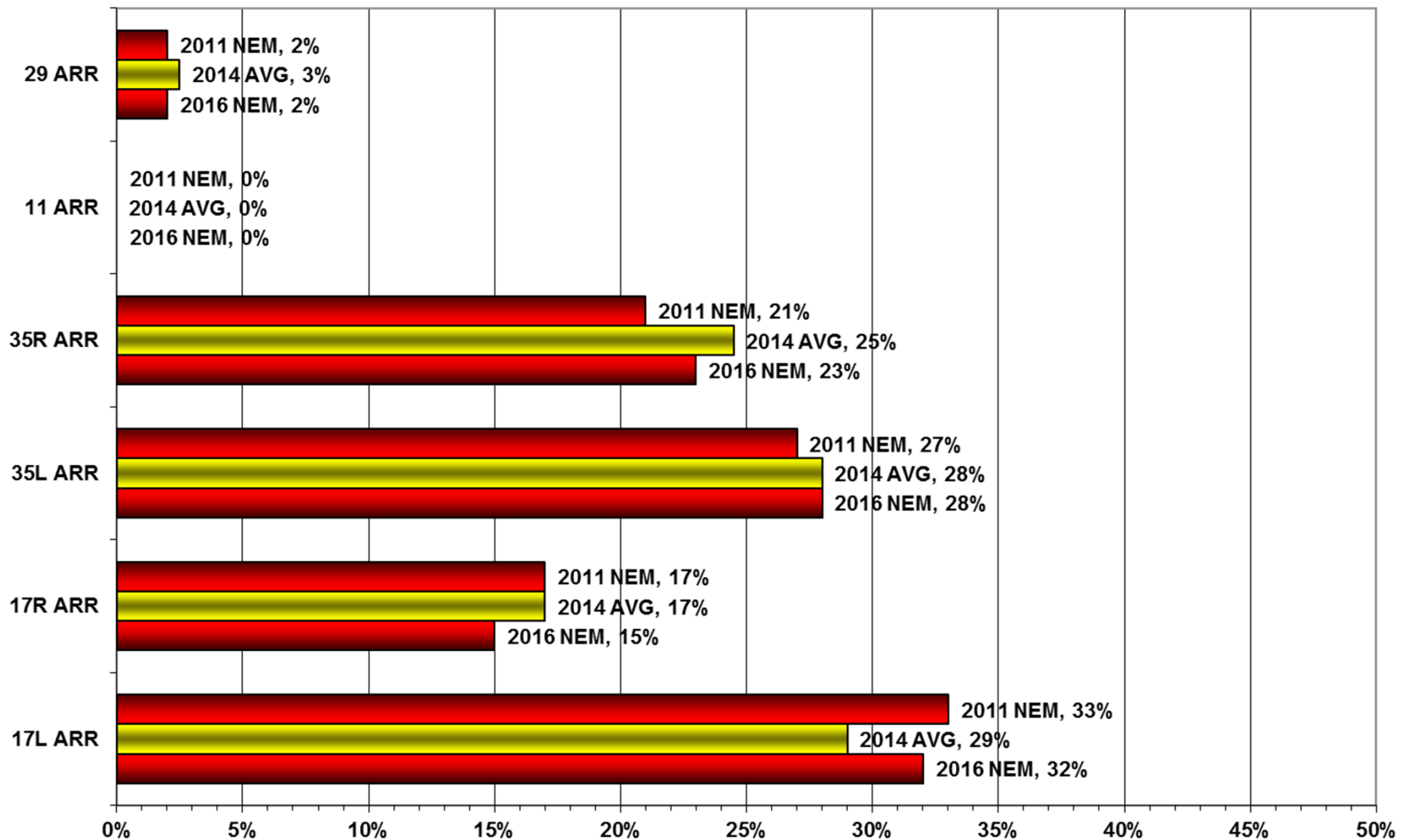
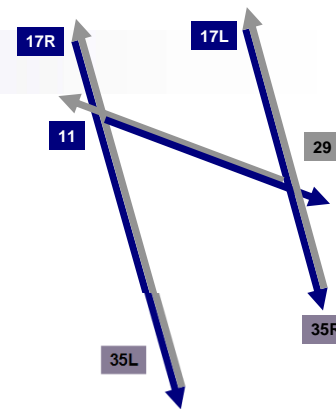
Tower Comments February 2014

Day	Date	Time	Comment
sat	1-Feb-14	0000-0230	Wind on final 2029
sun	2-Feb-14	1330-2130	Wind 0112, wet runways
mon	3-Feb-14	1300-1630	Wind 2607, wet runways, TDWR OTS
tue	4-Feb-14		
wed	5-Feb-14		
thu	6-Feb-14	2000-2130	Wind 2912, 3307, 3208
fri	7-Feb-14	0300-0900	South until 0607, then wind 0207 TDWR OTS
fri	7-Feb-14	1200-1230	North until 1215, then south due to traffic lull
sat	8-Feb-14		
sun	9-Feb-14	0800-0900	Wind 3206, wet runways
sun	9-Feb-14	1430-2030	Wind 3506, wet runways, TDWR OTS
mon	10-Feb-14	1300-1400	Wind 0307 TDWR OTS
mon	10-Feb-14	1600-2130	South until 1751, then wind 0209
tue	11-Feb-14	0730-0900	Wind 0206, TDWR OTS
tue	11-Feb-14	1630-2130	Wind 3509
wed	12-Feb-14	0730-0900	Wind 0208, TDWR OTS
thu	13-Feb-14	2200-0000	Wind 2313
fri	14-Feb-14	0000-0230	Wind 2518, TDWR OTS
fri	14-Feb-14	0930-1230	Wind 2309, wet runways
sat	15-Feb-14	1000-1430	Wind 3110, wet runways
sun	16-Feb-14	0900-2000	Winds north, TDWR OTS, valid reason not docu
mon	17-Feb-14	0930-1230	Wind 1413
mon	17-Feb-14	2200-0000	Wind 2511, TDWR OTS
tue	18-Feb-14	0000-0230	Wind 2208, TDWR OTS
tue	18-Feb-14	0930-1100	Valid reason not documented
wed	19-Feb-14	1300-1400	Wind 3209, TDWR OTS
wed	19-Feb-14	1530-1930	Wind 2908, TDWR OTS
wed	19-Feb-14	2200-0000	Wind 1506, TDWR OTS
thu	20-Feb-14	0000-0230	Wind 1506, TDWR OTS
fri	21-Feb-14	2200-0000	Wind 2107, TDWR OTS
sat	22-Feb-14	0000-0230	Wind 2112
sun	23-Feb-14	0300-0430	Wind 3617
sun	23-Feb-14	0700-0830	Wind 0109
mon	24-Feb-14	0000-0900	Wind 3511, @0700 wind 3406 TDWR OTS
mon	24-Feb-14	1300-1500	Wind 3208 TDWR OTS
tue	25-Feb-14	1300-1700	Wind 3606 TDWR OTS
wed	26-Feb-14	1300-1430	Wind 3309
wed	26-Feb-14	1730-2130	Wind 3311
thu	27-Feb-14		
fri	28-Feb-14	0930-1230	This one's iffy, forecast 1309, wind 1604

Runway Use (SDF)

Arrivals

NEM vs. Actual
January 01 - February 28, 2014

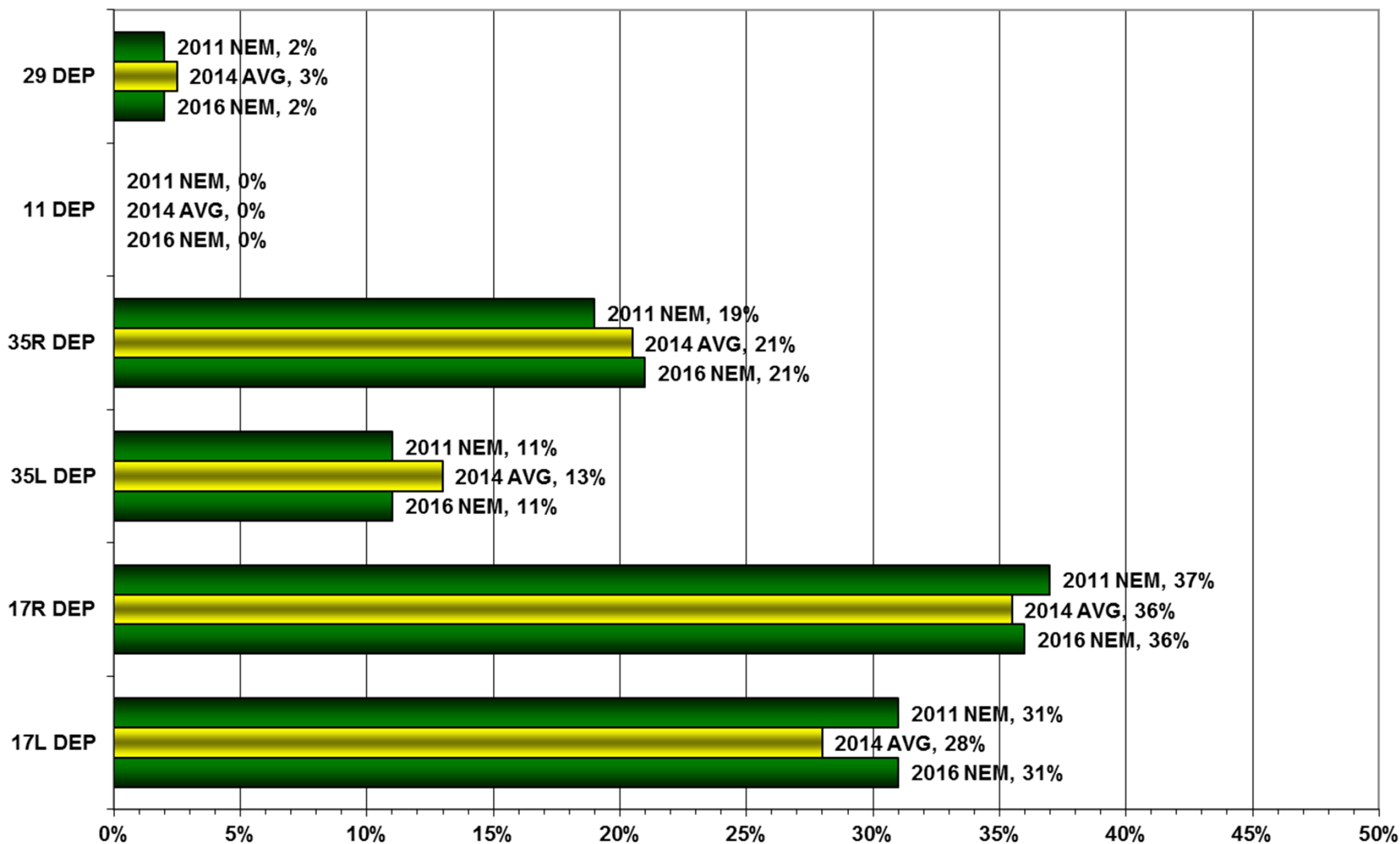
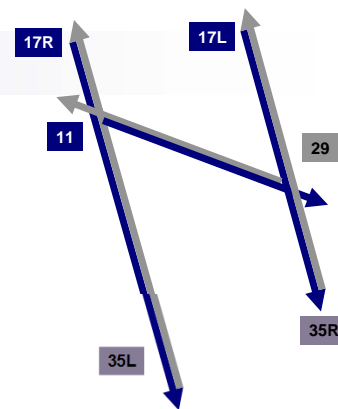


Source: Louisville International Airport
Aircraft Flight Tracking and Noise Management System (AFTNMS)

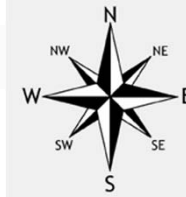
Runway Use (SDF)

Departures

NEM vs. Actual
January 01, - February 28, 2014



Source: Louisville International Airport
Aircraft Flight Tracking and Noise Management System (AFTNMS)

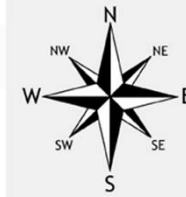


Runway Use 0930L-1230L_(SDF)

As of February 2014

	Arrival Percentage by Runway								Departure Percentage by Runway							
	11	17L	17R	29	35L	35R	% From South	Arrival Count	11	17L	17R	29	35L	35R	% To North	Departure Count
Mar-12	0	30	38	0	15	17	32	684	0	29	36	2	0	33	33	404
Apr-12	0	15	10	1	43	31	74	589	0	13	10	5	17	55	72	336
May-12	0	27	22	0	29	21	50	745	0	25	25	0	15	34	49	449
Jun-12	0	11	16	4	46	26	72	652	0	12	14	4	19	52	71	427
Jul-12	0	6	32	0	49	13	62	619	0	8	27	3	45	17	62	384
Aug-12	0	26	23	0	34	17	51	717	0	24	26	1	21	28	49	437
Sep-12	0	29	10	0	21	40	61	655	0	33	10	1	13	43	56	353
Oct-12	1	20	26	3	20	31	51	740	2	24	19	3	9	43	52	475
Nov-12	0	10	4	3	50	33	83	762	0	7	4	3	9		9	
Dec-12	0	18	12	5	41	24	65	779	0	17	9	3	8	63	71	412
Jan-13	0	16	12	0	42	30	72	742	0	17	16	2	14	52	66	436
Feb-13	0	21	11	9	39	2	41	628	0	21	16	7	12	44	56	354
Mar-13	0	10	6	0	51	33	84	728	0	10	8	3	14	65	79	441
Apr-13	0	24	27	2	27	20	47	719	0	26	23	3	8	40	48	441
May-13	0	33	33	0	20	14	34	785	0	33	31	1	10	25	35	410
Jun-13	0	10	13	0	43	31	74	717	0	8	13	0	22	57	79	534
Jul-13	0	23	10	0	42	25	67	694	0	24	12	0	20	44	64	465
Aug-13	0	22	10	0	43	25	68	725	0	18	13	0	13	56	69	483
Sep-13	0	13	5	0	43	39	82	676	0	14	5	0	25	56	81	448
Oct-13	0	16	14	2	37	31	68	864	0	12	18	3	13	54	67	535
Nov-13	0	29	12	0	39	20	59	721	0	26	19	3	12	40	52	437
Dec-13	0	14	13	0	42	31	73	943	0	14	16	0	9	61	70	460
Jan-14	0	27	21	2	29	21	50	682	0	28	21	4	19	37	56	401
Feb-14	0	13	11	7	37	32	69	669	0	19	11	7	15	48	63	359
Monthly Avg.	0	19	16	2	37	25	62		0	19	17	2	15	46	61	

Source: Louisville International Airport
Aircraft Flight Tracking and Noise Management System (AFTNMS)



Gate Compliance by Runway

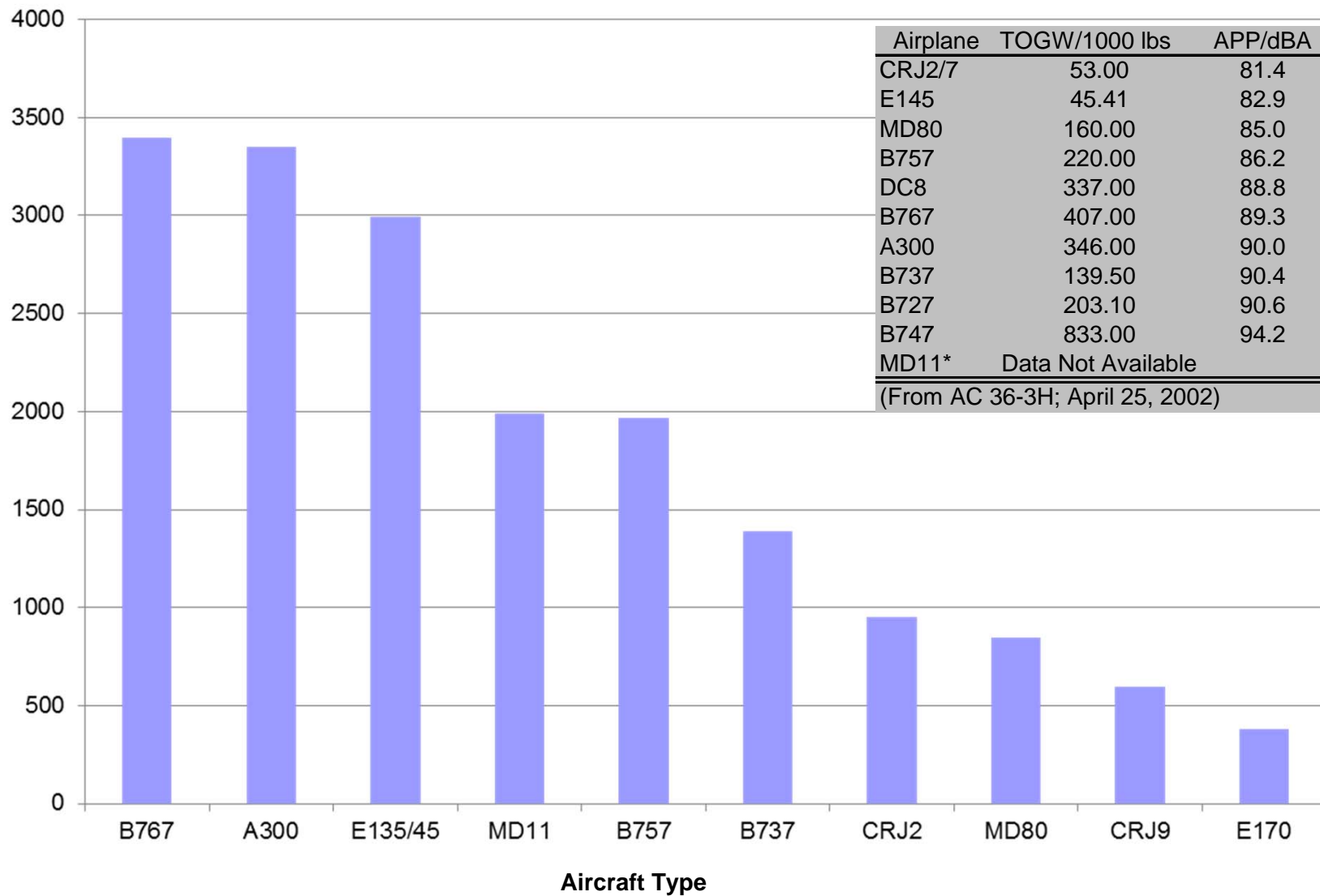
As of February 28, 2014

	ARRIVALS Percent Compliant					Departure Percent Compliant				
Month	17L	17R	35L	35R	ARR AVG	17L	17R	35L	35R	DEP AVG
Mar-12	76%	88%	76%	81%	80%	48%	68%	67%	80%	66%
Apr-12	65%	80%	72%	73%	73%	63%	72%	79%	85%	75%
May-12	71%	86%	75%	77%	77%	67%	80%	78%	87%	78%
Jun-12	61%	81%	71%	73%	72%	63%	75%	78%	90%	77%
Jul-12	66%	83%	70%	76%	74%	62%	72%	77%	89%	75%
Aug-12	68%	85%	75%	77%	76%	63%	71%	83%	90%	77%
Sep-12	79%	93%	81%	78%	83%	53%	72%	72%	88%	71%
Oct-12	80%	92%	85%	82%	85%	70%	59%	70%	89%	72%
Nov-12	73%	73%	82%	85%	78%	84%	82%	84%	92%	86%
Dec-12	84%	93%	89%	91%	89%	74%	85%	72%	79%	78%
Jan-13	82%	93%	82%	83%	85%	73%	86%	81%	87%	82%
Feb-13	78%	93%	85%	84%	85%	73%	85%	76%	78%	78%
Mar-13	73%	86%	88%	86%	83%	82%	89%	82%	86%	85%
Apr-13	75%	90%	77%	78%	80%	73%	89%	80%	81%	81%
May-13	81%	87%	78%	77%	81%	70%	84%	76%	92%	81%
Jun-13	73%	84%	76%	82%	79%	76%	88%	74%	86%	81%
Jul-13	82%	87%	81%	82%	83%	81%	84%	76%	91%	83%
Aug-13	78%	89%	79%	81%	82%	78%	83%	78%	92%	83%
Sep-13	78%	88%	76%	81%	81%	79%	86%	77%	93%	84%
Oct-13	77%	90%	83%	79%	82%	75%	90%	77%	90%	83%
Nov-13	77%	93%	80%	82%	83%	71%	91%	79%	92%	83%
Dec-13	82%	94%	90%	89%	89%	64%	87%	71%	89%	78%
Jan-14	78%	88%	86%	84%	84%	67%	91%	75%	89%	81%
Feb-14	80%	89%	86%	85%	85%	60%	90%	76%	89%	79%
24 Month Avg.					81%					79%

Source: Louisville International Airport
Aircraft Flight Tracking and Noise Management System (AFTNMS)

Operations by Aircraft Type (SDF) Only Top 10 Aircraft Types Shown

January/February 2014



Source: Louisville International Airport

Aircraft Flight Tracking and Noise Management System (AFTNMS)