

**Community Noise Forum
Monday, November 25, 2013
Agenda**

- I. Call to order: 6:00PM
- II. Minutes of September 23, 2013.
- III. Old Business
- IV. FlyQuiet Awards
 - A. Air Traffic Control Tower
 - B. UPS
- V. Special Presentation: NextGen Flight Tracking (Sam Carter, Exelis, Inc.)
- VI. Announcements
- VIII.. Next Meeting: Monday, January 27, 2014
- IX. Adjournment

Happy Holidays!

COMMUNITY NOISE FORUM (CNF)
Monday, September 23, 2013

Members

John Sistarenik, ANA
Pete Levermore, Airline Affairs
Bob Slattery, LRAA
Mary Rose Evans, LRAA Board
Dwight Clayton, LRAA

Verna Goatley, Metro
Denny Thompson, Southeast
Mike Zanone, Northwest
Ken Dietz, UofL
Pat Gould, Northeast

Guests

Dorn Crawford, Audubon Pkwy.
David Haynes, Melford Ave.
Virginia Embry, Melford Ave.
Joanne Langdon, Melford Ave.

The meeting was called to order at 6:00 p.m. by John Sistarenik. Mary Rose Evans made a motion to approve the minutes from the July meeting and Verna Goatley seconded the motion. The July minutes were approved as written.

John Sistarenik welcomed Ken Dietz. He will be replacing Larry Owsley as the University of Louisville representative.

John reported on the “FlyQuiet” working group meeting that was held on August 23rd. The working group selected two nominees (UPS and the Air Traffic Control Tower (ATCT) at Standiford). It was recommended that both organizations be presented the first “FlyQuiet” award at the November holiday meeting. John nominated UPS and the ATCT. The nomination was seconded by Mike Zanone. A plaque will be presented to the nominees.

Part 150 NCP:

A. Updates:

Phase 3A: This phase of work will address sound insulating 22 families. Construction began on July 8th and is substantially complete.

Phase 3A-1: The contract for the sound insulation of 22 additional families was awarded to S&L Specialty Contracting of Syracuse, NY. Measurement walk-throughs were completed last week with construction anticipated to begin later this year or the first of next year.

Phases 4-7: Acoustical testing began in June and ran through August. Designs are complete for the first 50 homes and we anticipate awarding the contract for those homes at the November Board meeting.

- B. Contraflow Exceptions:** Contraflow for July was 74% for arrivals from the south and 88% for departures to the south. In August, arrivals from the south were 84% and departures to the south were 92%. For CY-2013 the arrivals are averaging 72% and departures are averaging 82%. A daily summary for July and August 2013 is contained in the handout. A monthly summary going back 8 years is also included in the handout.

Current Noise Concerns:

- A. Report on Noise Concerns/Complaints:** We received a total of 20 comments in July. 9 comments were comments received at the QHP project office and 11 were received by the LRAA. In August we received a total of 21 comments. 9 were received at the QHP project office and 12 were received by the LRAA. All but 2 of the comments received for both months were from areas north of the airport.
- B. Runway Utilization:** Runway utilization percentages for July and August are contained in the handout. Daily runway utilization and comments from the Air Traffic Control Tower for July and August are also included in the handout. Mike Zanone asked why compliance with some of the departure gates are better than with other gates. Bob explained that it is most likely due to the distance and angle of the gates the corresponding runway end. A more detailed discussion on this topic will be held at the January meeting.
- C. Construction and Maintenance Activity:** Taxiway Echo construction is wrapping up. Should be completed first or second week of October. Pavement rehab project on west runway, which is done over the weekends, will continue for another 2 more weekends weather permitting. The ribbon cutting for the Crittenden Drive North was just completed and Dwight Clayton also briefed the group on the Woodlawn bridge overpass portion of the project.

Announcements: None.

Guest Comments: Mrs. Virginia Embry read a letter from her neighborhood and submitted a petition with 43 signatures requesting sound insulation for their neighborhood. A copy of the letter and signatures are attached. John Sistarenik explained to her that lines have to be drawn and boundaries are made utilizing the FAA criteria. Unfortunately, some homes are left out that could be in the same neighborhood. Bob Slattery also explained that the program boundaries are developed in accordance with FAA guidelines.

Next Meeting: Monday, November 25, 2013 at 6 p.m.

Adjournment: A motion was made to adjourn the meeting at 7:20pm by Mike Zanone and seconded by Denny Thompson.

I'm here on behalf of the residents of Parkway Village who live East of Alexander Avenue.

While our neighbors to the West took in the benefits of your soundproofing program, we are being left out.

We deal with as much or more noise, as they do. I have photos that prove the planes from Louisville International Airport fly directly over our homes. Along with the noise that rattles our door & windows, which depreciates our homes value.

These planes release large amounts of butadiene at a rate of 14,689 pounds which is a known Cancer Causing agent. Seven residents of Linwood and Melford have died of cancer and two others have battled the disease. We feel we deserve the same benefits of the soundproofing program as those who live West of Alexander Avenue. Since we are within the same flight path. I'm submitting this petition

East of
Alexander →

With over 40 signatures of residents
who agree

We, the undersigned residents of Parkway Village who live east of Alexander Avenue, disagree with your assessment that planes from Louisville International Airport do not fly over our homes. We regularly observe planes flying over or east of Alexander Avenue. The resulting noise and vibrations are a disruption, and result in damage to the dwellings. We request that you reconsider including our homes as part of your soundproofing plan.

01.	Virginia Embury 853 Melford Ave 40217	09.	Joanne Langdon 855 Melford Ave 40217
02.	Roscoe Embury 853 Melford Ave 40217	10.	Carla Owen 853 Greenwood Ave 40217
03.	Richard B. Embury 853 Melford Ave. 40217	11.	Karen Baker 855 Greenwood Ave 40217
04.	David R. Haynes 856 Melford Ave	12.	James Baker 855 Greenwood Ave 40217
05.	V.L. Springfield 858 Meek Road Av	13.	Erin Spalding 857 Linnwood Ave 40217
06.	Carry Bensonfield 858 MELFORD AVE	14.	James E. Perkins 859 Linnwood Ave
07.	Bonnie Ledington 854 Melford Ave	15.	Daren Lawrence 840 Perennial Dr
08.	Rob Ledington 854 Melford Ave	16.	James Lawrence 840 Perennial Dr

17. Gail Dentler
841 Perennial Dr.
18. Charlie Dentler
841 PERENNIAL DRIVE
19. JAMES MOCH
839 Perennial Dr
20. Kelly Moch
839 Perennial Dr
21. JAMES P. MOCH
839 Perennial Dr
22. Dany A Maho Sr
837 Perennial Dr
23. Quella J Moch
837 Perennial Dr.
- 24.
25. Shemi Cottonson
837 Perennial Dr
26. Anakea Hancock
836 Perennial Dr
- Sammy La Mahon
845 Reading Rd
Louisville, KY 40217

27. Margaret Hornback
852 Melford
28. Krishna Kommineni
851 Melford Ave 40217
29. GEORGE A. FEIGE
854 LINWOOD AVE 40217
30. Brent ~~Cottonson~~ West
857 Melford Ave 40217
31. Chesney West
857 Melford Ave 40217
32. DAVID FRAZIER
2515 Alexander Ave
33. Jacobo Chers
34. 852 PARKWAY DR
Fat Lynn 85-
35. 857 Parkway Dr
Mary Ann Lynns
36. 857 Parkway Dr
Thomas N. Hanning
855 Parkway Dr.

37.

Heather Rosethornung
855 Parkway Drive
Louisville, KY 40217

38.

Ken Moore

39.

849 Parkway dr
BRUCE HUNINGHAKE

40.

858 LINWOOD AVE
Keith Ingram

41.

900 Packard
Kathy Perella

42.

837 Packard
Charles Oerther

43.

837 Packard
James Perella

44.

837 Packard

45.

46.

47.

48.

49.

50.

51.

52.

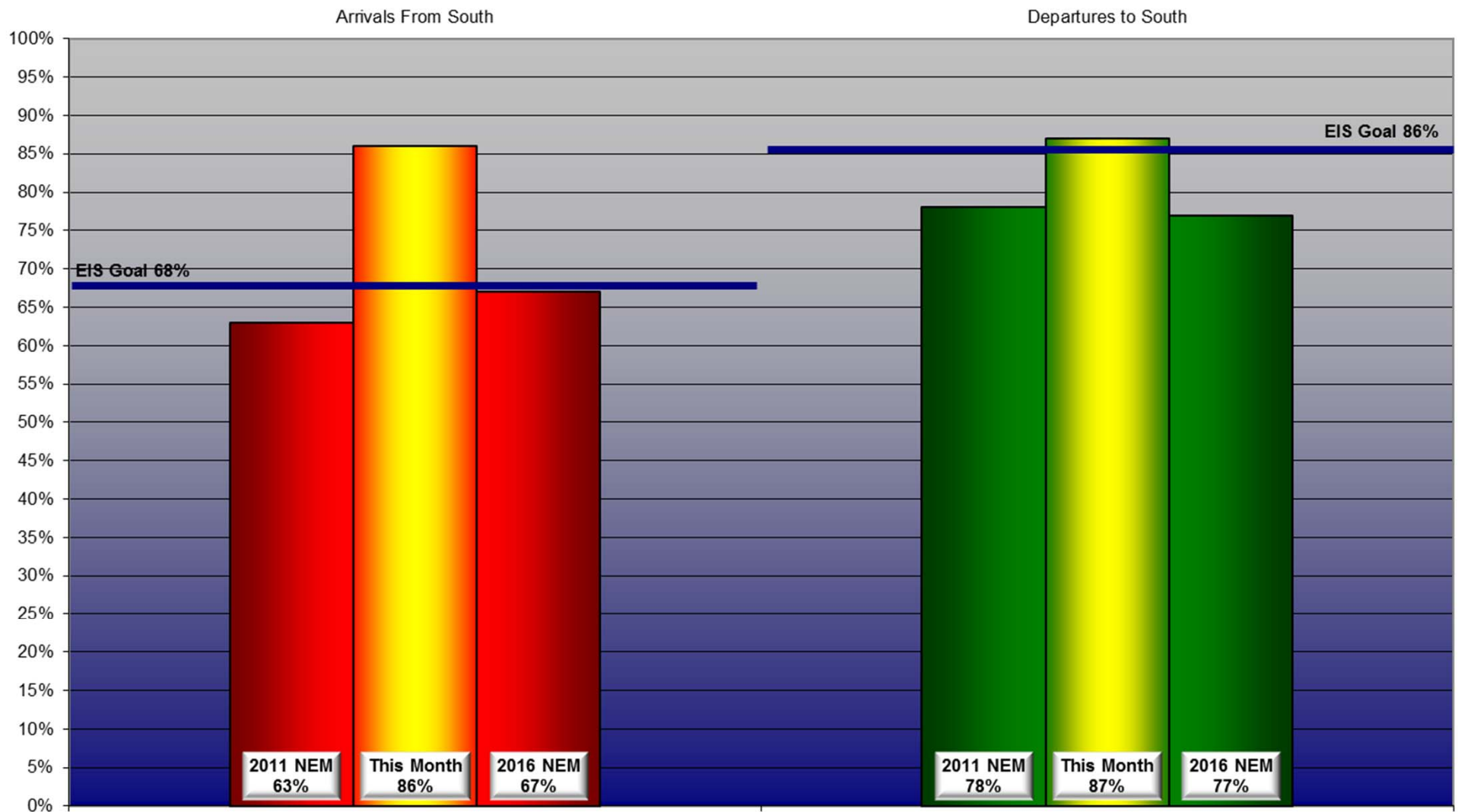
53.

54.

55.

56.

Monthly Contraflow September 01-30, 2013



Daily Runway Use Summary- September 2013

(from 10:00 PM date list in first column to 7:00 AM the following morning)

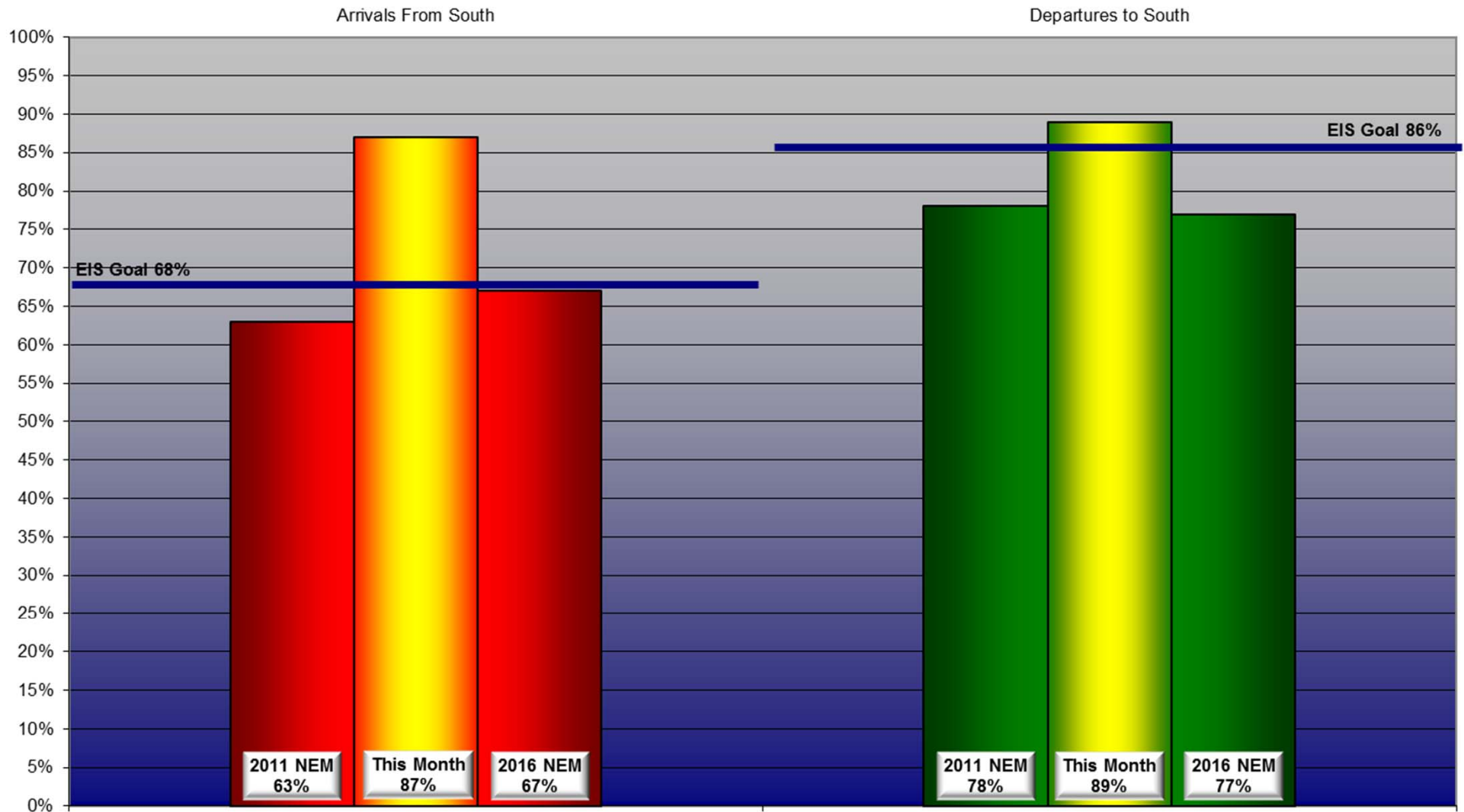
		% of all arrivals from the south										% of all departures to the south																																																																																																																																																																																																																																																																																																																																																																																																																																																																																																																																																																																																																																																																																																																																																																																																																																																																																																																																																																																																																																																																																																																																																																																																																																																																																																																														
Date	Day	* in	Runway #							Unknown	Notes /		** in	Runway #							Unknown	Notes /																																																																																																																																																																																																																																																																																																																																																																																																																																																																																																																																																																																																																																																																																																																																																																																																																																																																																																																																																																																																																																																																																																																																																																																																																																																																																																																				
		compliance	11	17L	17R	29	35L	35R	Use	Runway				compliance	11	17L	17R	29	35L	35R	Use			Runway																																																																																																																																																																																																																																																																																																																																																																																																																																																																																																																																																																																																																																																																																																																																																																																																																																																																																																																																																																																																																																																																																																																																																																																																																																																																																																																		
											Comments																																																																																																																																																																																																																																																																																																																																																																																																																																																																																																																																																																																																																																																																																																																																																																																																																																																																																																																																																																																																																																																																																																																																																																																																																																																																																																																															</

Preferred Flow

DATIS Reported Conditions Indicate
Support for Non-Preferred Flow

DATIS Reported Conditions Do Not Indicate
Support for Non-Preferred Flow

Monthly Contraflow October 01-31, 2013



Daily Runway Use Summary- October 2013

(from 10:00 PM date list in first column to 7:00 AM the following morning)

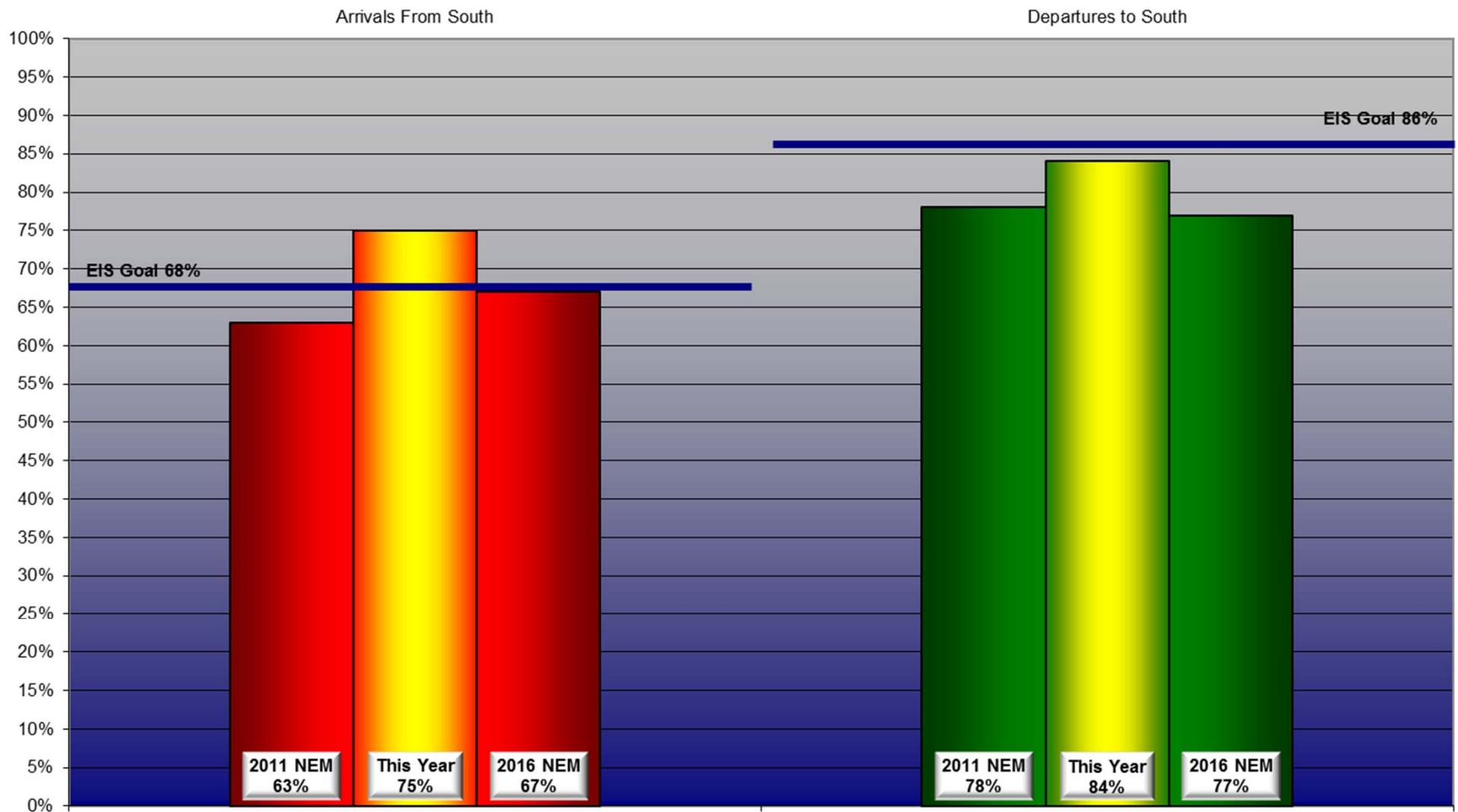
		% of all arrivals from the south										% of all departures to the south											
Date	Day	* in	Runway #							Unknown	Notes / Comments	** in	Runway #							Unknown	Notes / Comments		
		compliance	11	17L	17R	29	35L	35R	Runway	Use			compliance	11	17L	17R	29	35L	35R	Runway		Use	
10/01/13	Tue	95%			3	2			56	39	0		95%			41	54			2	3	0	
10/02/13	Wed	76%			9	15			40	36	0		98%			43	55			1	1	0	
10/03/13	Thu	93%			3	4			58	35	0		96%			41	55			1	3	0	
10/04/13	Fri	89%			6	5			56	33	0		96%			40	56			1	3	0	
10/05/13	Sat																						
10/06/13	Sun																						
10/07/13	Mon	98%			2				55	43	0		96%			39	57			2	2	0	
10/08/13	Tue	97%			3				56	41	0		97%			42	55			2	1	0	
10/09/13	Wed	89%			8	3			50	39	0		97%			41	56			1	2	0	
10/10/13	Thu	92%			6	2			55	37	0		95%			36	59			2	3	0	
10/11/13	Fri	89%			6	5			53	36	0		96%			38	58			1	3	0	
10/12/13	Sat																						
10/13/13	Sun																						
10/14/13	Mon	92%			8				58	34	0		98%			37	61			1	1	0	
10/15/13	Tue	72%			13	15			36	36	0		98%			41	57			1	1	0	
10/16/13	Wed	94%			6				55	39	0		87%			37	50			9	4	0	
10/17/13	Thu	98%			2				53	45	0		98%			41	57			2		0	
10/18/13	Fri	94%			2	4			61	33	0		97%			34	63			1	2	0	
10/19/13	Sat																						
10/20/13	Sun																						
10/21/13	Mon	96%			3	1			54	42	0		9%			5	4			53	38	0	350-010@3-11knts,G15,RA
10/22/13	Tue	78%			9	13			40	38	0		17%			4	13			41	42	0	190-290@6-17knts,G25
10/23/13	Wed	97%			3				61	36	0		95%			40	55			3	2	0	
10/24/13	Thu	97%			3				56	41	0		98%			36	62			1	1	0	
10/25/13	Fri	93%			1	6			47	46	0		94%			43	51			3	3	0	
10/26/13	Sat																						
10/27/13	Sun																						
10/28/13	Mon	94%			3	3			58	36	0		93%			37	56			6	1	0	
10/29/13	Tue	97%			1	2			52	45	0		94%		1	38	56			4	1	0	
10/30/13	Wed	0%			47	53					0	170-180@5-6knts	100%			38	62					0	
10/31/13	Thu	82%			11	7			44	38	0		97%			41	56			2	1	0	

Preferred Flow

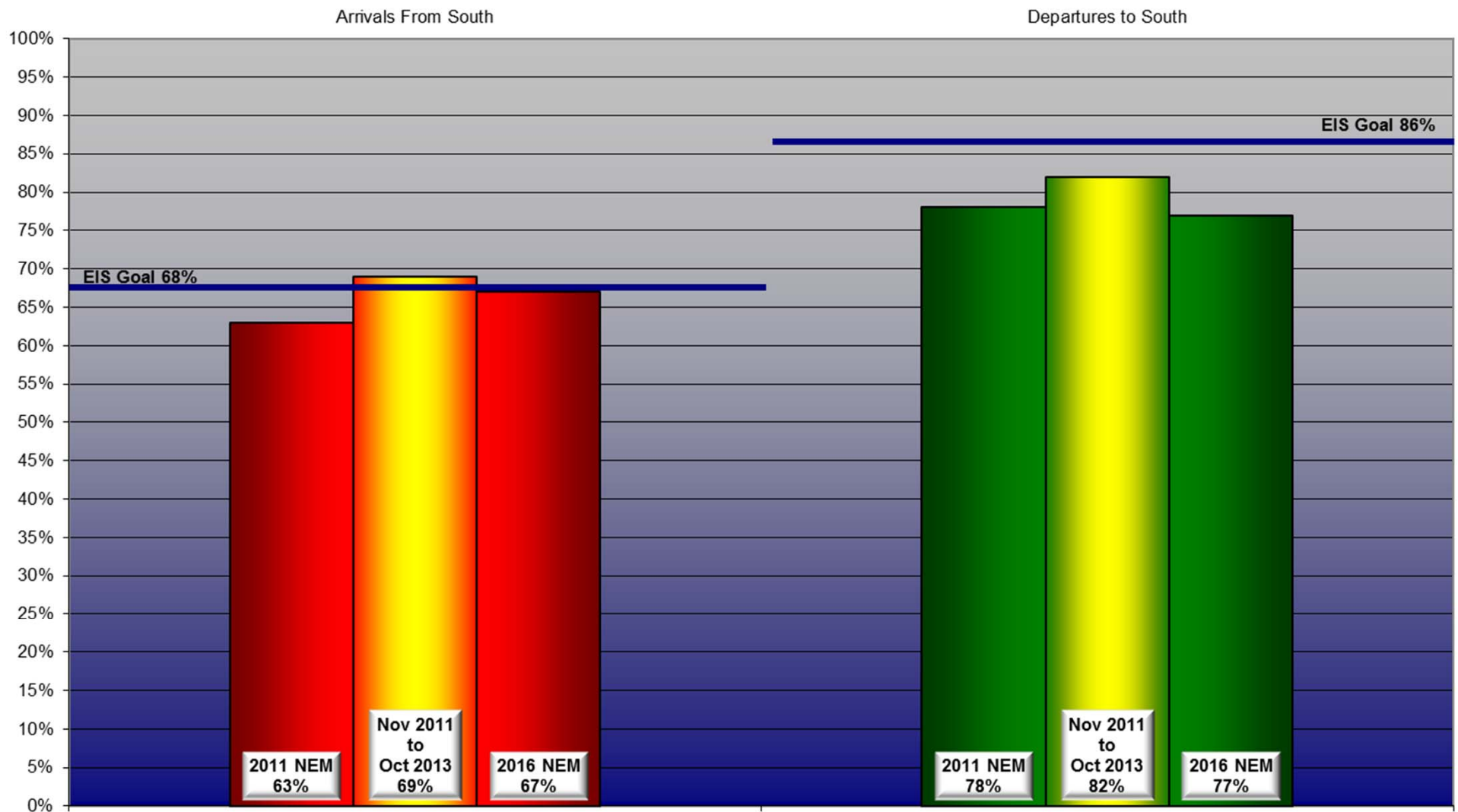
DATIS Reported Conditions Indicate
Support for Non-Preferred Flow

DATIS Reported Conditions Do Not Indicate
Support for Non-Preferred Flow

Yearly Contraflow As of November 01, 2013



Contraflow November 2011 - October 2013



Year-to-Year by Month Percent*

Contraflow

Arrivals From the South (Goal 68%)										Departures to the South (Goal 86%)									
	2006	2007	2008	2009	2010	2011	2012	2013	Avg		2006	2007	2008	2009	2010	2011	2012	2013	Avg
Jan	54%	39%	50%	63%	94%	91%	62%	72%	66%	Jan	68%	80%	80%	74%	54%	71%	80%	65%	72%
Feb	57%	77%	50%	49%	90%	73%	69%	77%	68%	Feb	74%	76%	74%	81%	71%	63%	74%	78%	74%
Mar	64%	52%	52%	46%	80%	52%	61%	87%	62%	Mar	65%	78%	68%	67%	82%	72%	96%	77%	76%
Apr	61%	61%	44%	53%	57%	47%	78%	60%	58%	Apr	78%	67%	92%	84%	84%	83%	76%	89%	82%
May	71%	71%	66%	66%	56%	69%	72%	46%	65%	May	70%	84%	78%	84%	87%	85%	81%	85%	82%
Jun	84%	64%	38%	72%	66%	61%	79%	76%	68%	Jun	89%	85%	93%	81%	96%	93%	87%	80%	88%
Jul	84%	84%	75%	72%	61%	91%	62%	74%	75%	Jul	88%	85%	84%	82%	90%	88%	92%	88%	87%
Aug	84%	69%	92%	61%	59%	82%	49%	84%	73%	Aug	79%	87%	77%	96%	92%	91%	91%	92%	88%
Sep	84%	79%	91%	89%	70%	85%	55%	86%	80%	Sep	84%	89%	73%	82%	73%	64%	92%	87%	81%
Oct	84%	54%	76%	42%	80%	88%	62%	87%	72%	Oct	76%	68%	77%	71%	78%	63%	78%	89%	75%
Nov	84%	58%	66%	74%	85%	55%	84%		72%	Nov	83%	77%	74%	73%	77%	72%	81%		77%
Dec	84%	53%	58%	71%	67%	70%	64%		67%	Dec	82%	74%	62%	65%	78%	65%	67%		70%
Avg	75%	63%	63%	63%	72%	72%	66%	75%		Avg	78%	79%	78%	78%	80%	76%	83%	83%	

*Number is percentage of all operations between 10:00 PM - 7:00 AM



***LOUISVILLE
REGIONAL
AIRPORT
AUTHORITY®***

NOISE COMMENT REPORT
September 2013

Comments (SDF/LOU)

September 2013

Street	Zip Code	Time Received	Time	Airport	Disturbance Type	CNF Quad	Status	Operation or Comment Type ¹	Deviation Type ²	Comments
Hess LN	40217	2013-09-04 08:52:05	2013-09-01 08:52:05	SDF	Other	NE	Investigated	LQHP	None	Homeowner called and was wondering what phase the houses located on Louisa were in because he lives very close to them. He also said that he's tried contacting the FAA and nothing has ever been done. He said most of the houses on Louisa are made of brick, and that his house wasn't so he didn't understand why they were included in the program.
Delor AV	40217	2013-09-03 14:57:44	2013-09-03 14:57:44	SDF	Other	NE	Investigated	LQHP	None	Homeowner called to see if he is eligible for the program.
Franklin AV	40213	2013-09-04 14:57:44	2013-09-04 15:06:12	SDF	Other	NE	Investigated	LQHP	None	Homeowner called to inquire about the program.
Parkway DR	40217	2013-09-06 14:57:44	2013-09-06 15:06:12	SDF	Other	NE	Investigated	LQHP	None	Can you please tell me if the property I own located on Parkway Drive is eligible for new windows to decrease the noise level produced by the airport?
Harrison AV	40217	2013-09-09 14:57:44	2013-09-09 15:06:12	SDF	Other	NW	Investigated	LQHP	None	Homeowner called because he's a realtor and he sold a house on Packard that qualified for the program. He said he never received a letter so he probably isn't eligible but wanted to check anyway.
Fetter AV	40217	2013-09-12 14:57:44	2013-09-12 14:57:44	SDF	Other	NE	Investigated	LQHP	None	Homeowner called to tell us she is interested in the program.

1. **Standard:** Indicates the "Most Preferred" runway configuration was being utilized at the time of the comment.
Non Standard: Indicates that a "Lesser Preferred" runway configuration was being utilized at the time of the comment.
QHP: QuieterHome Program

2. This column is used to indicate the conditions which most likely necessitated a deviation from the standard procedures.

Comments (SDF/LOU)

September 2013

Street	Zip Code	Time Received	Time	Airport	Disturbance Type	CNF Quad	Status	Operation or Comment Type ¹	Deviation Type ²	Comments
Keswick Blvd	40217	2013-09-12 14:57:44	2013-09-12 15:24:36	SDF	Other	NE	Investigated	LQHP	None	Homeowner called to see if her home was eligible for the program yet.
Rosemary DR	40213	2013-09-24 14:57:44	2013-09-24 14:57:44	SDF	Other	NE	Investigated	LQHP	None	Homeowner called to inquire about eligibility for this property.
							Received	LQHP	8	
Melford AV	40217	2013-09-09 10:31:31	2013-09-09 10:00:00	SDF	Too Much Noise	NE	Investigated	Standard	None	I have lived here for years. I have called about the noise from the airplanes. I went to the meetings and even asked people to come over here and see for themselves how much noise we have and no one has ever come out. I have even had cancer 2 times and they say that the fuel from the airplanes causes cancer. I have just as much noise as the people on the other side of Alexander because the planes fly over this way.
W. Ormsby	40203	2013-09-10 23:48:40	2013-09-10 22:00:00	SDF	Over Use of Runway	NW	Investigated	Non-Standard	Operations	I am on Ormsby directly under the path of the UPS planes going over. I swear there is not a breath of wind out. I find it very skeptical that they need to be flying in over the city tonight. If you could give me a call back and let me know what's up.
Wainwright AV	40217	2013-09-11 10:46:40	2013-09-11 10:15:40	SDF	Too Much Noise	NE	Investigated	Standard	None	I am calling about the airport noise. We have lived here for 20 years and this has been going on for a long time. I have just had it. I am disabled and I am losing sleep and losing patience.

1. **Standard:** Indicates the "Most Preferred" runway configuration was being utilized at the time of the comment.
Non Standard: Indicates that a "Lesser Preferred" runway configuration was being utilized at the time of the comment.
QHP: QuieterHome Program

2. This column is used to indicate the conditions which most likely necessitated a deviation from the standard procedures.

Comments (SDF/LOU)

September 2013

Street	Zip Code	Time Received	Time	Airport	Disturbance Type	CNF Quad	Status	Operation or Comment Type ¹	Deviation Type ²	Comments
Morgan ST	40217	2013-09-12 10:44:06	2013-09-12 10:15:06	SDF	Too Much Noise	NE	Investigated	Standard	None	I am calling about noise levels in the Schnitzelburg neighborhood. I am shocked that they are not included in the QHP. I would like some information on how to pursue getting them included in the program.
Harrison AV	40217	2013-09-12 13:10:23	2013-09-12 12:45:23	SDF	Other	NE	Investigated	Standard	None	I want to know when I will be included in the sound insulation program.
Larue AV	40213	2013-09-17 08:08:11	2013-09-17 04:00:11	SDF	Noise At Wrong Time	NE	Investigated	Non Standard	None	For the last few days things have been really bad over here. Normally, it is not that bad. It was really bad this morning between 4:00 and 4:30.
French AV	40217	2013-09-23 08:05:01	2013-09-23 08:05:01	SDF	Other	NE	Investigated	Standard	None	I am calling for a neighbor in Audubon Ridge, George Rogers Clark neighborhood. My friend has noticed changes in operations but I have not. I would like to know if anything has changed. Have you built new runways? What is the land being used for?

1. **Standard:** Indicates the “Most Preferred” runway configuration was being utilized at the time of the comment.
Non Standard: Indicates that a “Lesser Preferred” runway configuration was being utilized at the time of the comment.
QHP: QuieterHome Program

2. This column is used to indicate the conditions which most likely necessitated a deviation from the standard procedures.

Comments (SDF/LOU)

September 2013

Street	Zip Code	Time Received	Time	Airport	Disturbance Type	CNF Quad	Status	Operation or Comment Type ¹	Deviation Type ²	Comments
Top Hill RD	40118	2013-09-24 05:18:25	2013-09-24 04:30:00	SDF	Too Much Noise	SW	Investigated	Standard	None	I must say I have lived here all my life in Kentucky and 25 of those years at Top Hill Road. So with that said , I can say I have reached the point of contacting you about the amount of noise UPS planes create going over me and also hearing take offs and landings . I have been consistently awakened almost every morning very early when they do their scheduled routines and it's really too loud. I need some resolve in the near future. I'm 50 years old and a disabled ex-iron worker. So I do understand the logistics of the airport, but also know that I personally cannot take this routine sleep interruption every day. So please let's resolve this as I'm open to any idea you may have to help alleviate the noise created by UPS cargo planes. I also understand the importance of UPS in our community and appreciate what they have done for Louisville KY.
McCoy AV	40215	2013-09-25 17:02:12	2013-09-25 16:30:12	SDF	Aircraft Off Course	NW	Investigated	Non Standard	None	We had a plane go over here just 2 or 3 minutes ago. It is just about 5:00 PM or 5:02 PM. It looked like a passenger jet. They are also still happening late at night and early in the morning.
							Received	LRAA	9	

1. **Standard:** Indicates the “Most Preferred” runway configuration was being utilized at the time of the comment.
Non Standard: Indicates that a “Lesser Preferred” runway configuration was being utilized at the time of the comment.
QHP: QuieterHome Program

2. This column is used to indicate the conditions which most likely necessitated a deviation from the standard procedures.

Comment Location (SDF and LOU)
September 2013



SDF



QHP



LOU



OTH

Shively

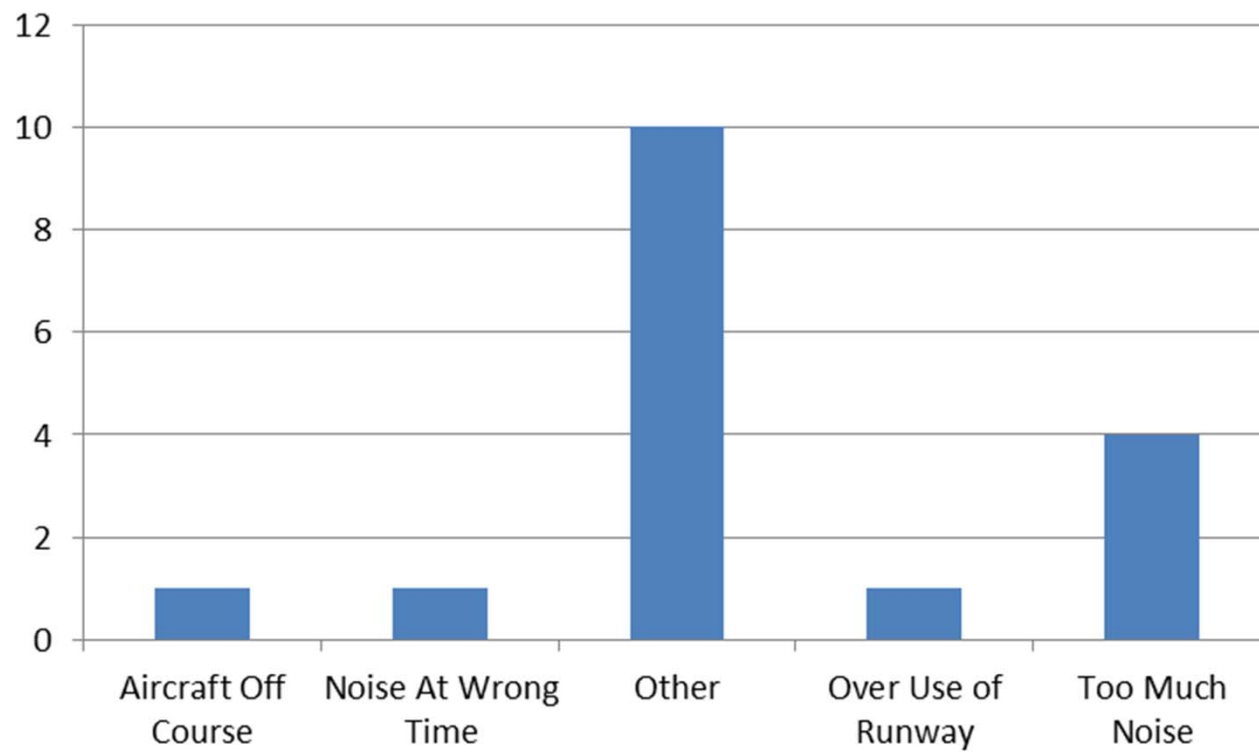
Jefferson

Google earth

© 2013 Google

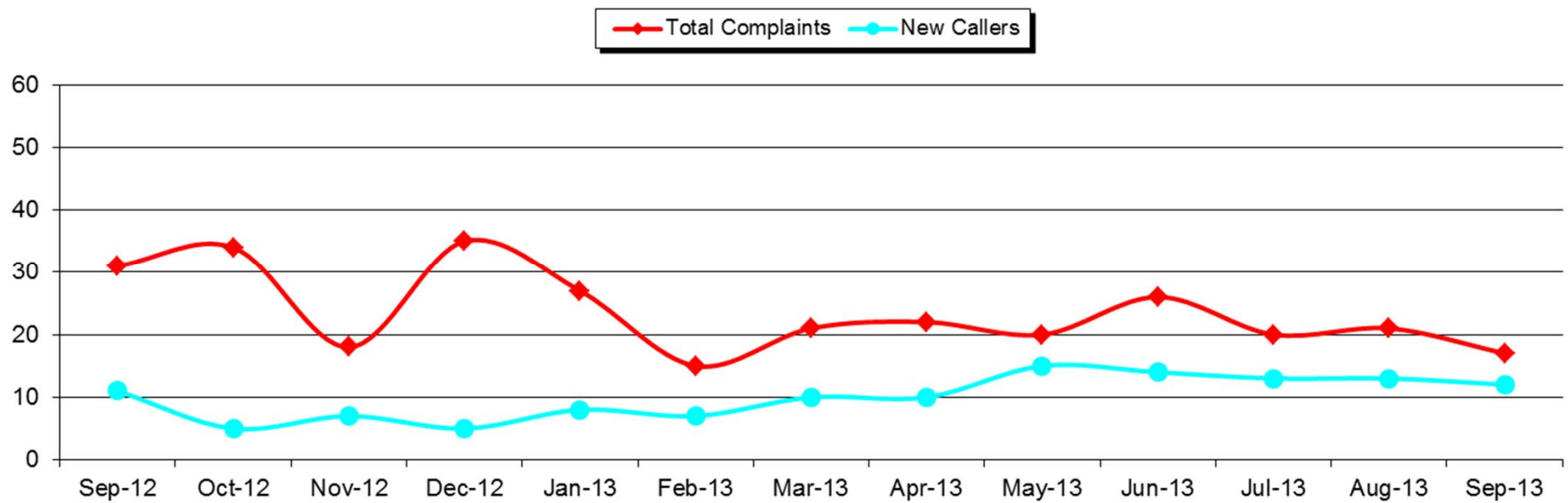
Comment Type* (SDF and LOU)

September 2013



New Address/Comments per Month (SDF and LOU)

September 2013





***LOUISVILLE
REGIONAL
AIRPORT
AUTHORITY®***

NOISE COMMENT REPORT

October 2013

Comments (SDF/LOU)

October 2013

Street	Zip Code	Time Received	Time	Airport	Disturbance Type	CNF Quad	Status	Operation or Comment Type ¹	Deviation Type ²	Comments
Hess LN	40217	2013-10-02 11:22:30	2013-10-02 11:22:30	SDF	Other	NE	Investigated	LQHP	None	Potential homeowner stopped in and inquired about this property that he is considering purchasing.
Regina LN	40213	2013-10-09 11:22:30	2013-10-09 11:54:55	SDF	Other	NE	Investigated	LQHP	None	Homeowner called to see if her home was eligible for the program.
Ervay AV	40217	2013-10-16 11:22:30	2013-10-16 11:54:55	SDF	Other	NE	Investigated	LQHP	None	Homeowner was checking to see if her home on Ervay Ave. will be eligible for the project in future phases.
Cardinal DR	40213	2013-10-17 11:22:30	2013-10-17 13:25:34	SDF	Other	NE	Investigated	LQHP	None	Homeowner wanted to know if her property was eligible for the program.
Dove RD	40213	2013-10-18 11:22:30	2013-10-17 13:25:34	SDF	Other	NE	Investigated	LQHP	None	Homeowner called to see if his home was eligible for the program. He said he had gotten a letter a while back.
Alexander AV	40217	2013-10-21 11:22:30	2013-10-21 13:37:59	SDF	Other	NE	Investigated	LQHP	None	According to the map, I believe my home is in Phase 6 of the program. What is the application process for this program?
							Received	LQHP	6	

1. **Standard:** Indicates the "Most Preferred" runway configuration was being utilized at the time of the comment.
Non Standard: Indicates that a "Lesser Preferred" runway configuration was being utilized at the time of the comment.
QHP: QuieterHome Program

2. This column is used to indicate the conditions which most likely necessitated a deviation from the standard procedures.

Comments (SDF/LOU)

October 2013

Street	Zip Code	Time Received	Time	Airport	Disturbance Type	CNF Quad	Status	Operation or Comment Type ¹	Deviation Type ²	Comments
McCoy AV	40215	2013-10-01 10:10:28	2013-10-01 09:45:28	SDF	Aircraft Off Course	NW	Investigated	Non-Standard	None	A Delta plane flew over the house at about 10:01 AM and another passenger plane flew over at about 10:02 AM using the same pattern. It still happens at night also. It does not happen as often but it is still a couple of times a week. There is no wind shear so I cannot understand why they would be coming this way, but to prove my point I am getting woke up at night and I am getting woke up between 4 and 5:30 in the morning by jets coming over my house and they are loud. I would like to have some kind of solution to this. I am not mad at you but if you are going to use this airspace I would like to have you do something with these old houses
Packard AV	40217	2013-10-07 16:07:58	2013-10-07 16:07:58	SDF	Other	NE	Investigated	Standard	None	I was having my home appraised and need to have some noise information about my house.

1. **Standard:** Indicates the “Most Preferred” runway configuration was being utilized at the time of the comment.
Non Standard: Indicates that a “Lesser Preferred” runway configuration was being utilized at the time of the comment.
QHP: QuieterHome Program

2. This column is used to indicate the conditions which most likely necessitated a deviation from the standard procedures.

Comments (SDF/LOU)

October 2013

Street	Zip Code	Time Received	Time	Airport	Disturbance Type	CNF Quad	Status	Operation or Comment Type ¹	Deviation Type ²	Comments
S 1st ST	40214	2013-10-10 13:29:37	2013-10-08 02:00:00	SDF	Too Much Noise	SW	Investigated	Standard	None	<p>I received your letter of September 6, 2013, which was in response to a letter I sent to the Mayor. I do appreciate your response. This is a complicated situation. The airport is necessary. Homeowner's comfort, pride in home, and sanity is important. Again, we have been at this location 40 years. Aircraft noise has not been significantly reduced. The opposite is the case. Last night in point 2:30 A.M. until 5:30 A.M., every 3 minutes roar, rumble, roar. Plates on my wall vibrated! Outdoors it sounds as though a plane is coming down Southern Heights. Talk about sound-proofing homes, which is not possible. Isn't our outdoor spaces part of our living space? I used to be able to enjoy a coffee on the patio in the morning, not anymore. I hear planes sitting on the runway, whining for take-off, and then the roar where no one can speak. Sadly, my property has become of little value and something I am ashamed of. I don't doubt the airport has attempted to make improvements. When aircraft become behemoth and depart every 3 minutes, it cancels out those improvements. There is no need for any of us residents to attend meetings. We are on the edge of the tarmac and that is our problem. As far as Federal guidelines and a method to measure noise, I invite you, the Feds, the Mayor, news people, etc. to spend the night at my home. Then all can feel my (our-the neighborhoods) pain. It insults a person's intelligence when you tell us the noise level has been measured and is within the guidelines.</p>

1. **Standard:** Indicates the "Most Preferred" runway configuration was being utilized at the time of the comment.
Non Standard: Indicates that a "Lesser Preferred" runway configuration was being utilized at the time of the comment.
QHP: QuieterHome Program

2. This column is used to indicate the conditions which most likely necessitated a deviation from the standard procedures.

Comments (SDF/LOU)

October 2013

Street	Zip Code	Time Received	Time	Airport	Disturbance Type	CNF Quad	Status	Operation or Comment Type ¹	Deviation Type ²	Comments
Melford AV	40217	2013-10-11 13:13:28	2013-10-11 12:30:28	SDF	Aircraft Off Course	NE	Investigated	Standard	None	I was just out in my yard and at 5 minutes until 1:00 P.M. UPS planes started coming over my house. There was about three that came over and just a regular aircraft. They were 3 houses behind mine when they came over and they came directly over my house. That went until right now. It is 10 minutes after 1 o'clock and there was three of them that came directly over my house. I think you all need someone out here to check and see that they are coming over our house and they are making as much noise as they are up Preston street.
S 1st ST	40208	2013-10-14 09:00:52	2013-10-14 09:00:52	SDF	Too Much Noise	NW	Investigated	Non-Standard	None	Over the past year or so it seems like there has been an increase in noise in my area. It also seems like there are more flights taking off to the north on the east runway.
Mount Claire AV	40217	2013-10-15 09:02:36	2013-10-15 09:02:36	SDF	Other	NE	Investigated	Standard	None	I live on Mount Claire Avenue. My area is being blasted by noise from commercial, UPS, FEDEX, and military jets and planes. We are on the West side of Preston and not included in the noise reduction area. I find this ludicrous since the East side of Preston IS in the noise reduction program. Conversation outside our homes is interrupted every few minutes. Our windows rattle several times a week. My neighbors and I would like to attend the next neighborhood meeting of the Authority. We also request a noise monitor be placed on the corner of Mt. Claire and Parkway Avenues. Please let me know when and where the next meeting will be held.

1. **Standard:** Indicates the "Most Preferred" runway configuration was being utilized at the time of the comment.
Non Standard: Indicates that a "Lesser Preferred" runway configuration was being utilized at the time of the comment.
QHP: QuieterHome Program

2. This column is used to indicate the conditions which most likely necessitated a deviation from the standard procedures.

Comments (SDF/LOU)

October 2013

Street	Zip Code	Time Received	Time	Airport	Disturbance Type	CNF Quad	Status	Operation or Comment Type ¹	Deviation Type ²	Comments
S Shelby ST	40217	2013-10-15 09:57:24	2013-10-15 09:57:24	SDF	Other	NE	Investigated	Standard	None	I am calling to find out if we are eligible for the noise reduction program. We just cannot take it anymore. We have lived here for about 10 years. It seems like they have changed the way the planes come in. We used to just get the planes coming in but now we get them coming in and going out. Last December we were trying to watch TV and it keeps cutting out every few minutes from the planes going over.
Linwood AV	40217	2013-10-15 10:30:23	2013-10-15 10:30:23	SDF	Other	NE	Investigated	Standard	None	Homeowner says he is being treated unfairly, because when he was tested no one is staying upstairs. If someone had been staying upstairs then he would put a window air conditioning unit in. We should come back and retest him with the window unit installed.
Cs-8014	40229	2013-10-15 12:58:35	2013-10-15 12:58:35	SDF	Too Much Noise	SW	Investigated	Standard	None	I would like to know a little more about what we can do about airplane noise. We recently moved into an area off John Harper, right in the flight plan of UPS planes and they are very irritating. They are pretty low and the noise is too much. I would just like to know what our rights are as far as are they using it too much, surely there is an airport noise leader. If you could just give me a call back, this is my first call. I just happened to see on the internet that you all were interested in doing stuff.
S. 2nd ST	40214	2013-10-16 15:07:02	2013-10-16 10:11:02	SDF	Too Much Noise	SW	Investigated	Standard	None	It has been awhile since I have contacted you. I wanted to find out what is going on over there because last week was a pretty noisy week. This week so far has been pretty good. If it was always like this it would be heaven.

1. **Standard:** Indicates the “Most Preferred” runway configuration was being utilized at the time of the comment.
Non Standard: Indicates that a “Lesser Preferred” runway configuration was being utilized at the time of the comment.
QHP: QuieterHome Program

2. This column is used to indicate the conditions which most likely necessitated a deviation from the standard procedures.

Comments (SDF/LOU)

October 2013

Street	Zip Code	Time Received	Time	Airport	Disturbance Type	CNF Quad	Status	Operation or Comment Type ¹	Deviation Type ²	Comments
Parkway DR	40217	2013-10-16 12:39:09	2013-10-16 13:10:09	SDF	Other	NE	Investigated	Standard	None	We live on Parkway Drive and I am inquiring about the airplane noise ordinance. We wanted to see if any of the areas have been expanded, and if we would qualify to be in that program to get some noise barriers to our home.
Grand Trevi DR	40228	2013-10-18 00:29:35	2013-10-17 23:30:35	SDF	Aircraft Too Low	SE	Investigated	Standard	None	Is there some reason the planes have changed their flight pattern? They are flying over my house very low and it is very annoying they do not usually do this. Sometimes when there is severe weather they do but there is nothing out there that tells me there is severe weather. They are very low, they sound like they are going to land on my house. So I can probably get flight numbers off the planes. I want to know why they have changed their flight pattern tonight.
E Ormsby AV	40203	2013-10-18 13:00:03	2013-10-18 12:30:03	SDF	Too Much Noise	NE	Investigated	Standard	None	I am calling to complain about the airplanes going over. I do not know what has happened but for the last couple of days the planes seem to be really loud. I hate to complain but they go over all the time and over the last several days it seems to have gotten a lot worse.

1. **Standard:** Indicates the "Most Preferred" runway configuration was being utilized at the time of the comment.
Non Standard: Indicates that a "Lesser Preferred" runway configuration was being utilized at the time of the comment.
QHP: QuieterHome Program

2. This column is used to indicate the conditions which most likely necessitated a deviation from the standard procedures.

Comments (SDF/LOU)

October 2013

Street	Zip Code	Time Received	Time	Airport	Disturbance Type	CNF Quad	Status	Operation or Comment Type ¹	Deviation Type ²	Comments
Parkway DR	40217	2013-10-24 11:21:43	2013-10-24 11:21:43	SDF	Other	NE	Investigated	Standard	None	I was given your name by C&S companies. I understand that my address is right outside the project the airport is working on. I was checking to see if there was any way I could get my address included in this situation since the planes are a definite annoyance to us. I would like to be included in the survey about the noise from the airport because we are impacted by the noise from the airport. We can actually hear the plane engines doing reverse thrust when they are landing while lying in our bedroom. I think we are impacted even though we seem to be right outside the area.
Halstead AV	40213	2013-10-24 13:36:57	2013-10-24 13:36:57	SDF	Constant Noise	SE	Investigated	Standard	None	I am checking to see if we qualify for the noise insulation program. Most of the noise is in the morning, and when there are storms they really come over here. It is worse when all the leaves are off the trees and we hear the planes one right after the other.
Meadow Lark AV	40213	2013-10-25 13:31:29	2013-10-24 22:00:00	SDF	Too Much Noise	NE	Investigated	Standard	None	Well, here we are again. I am being woke up at all hours of the night again due to UPS traffic. I live on Meadowlark. Should I contact my own testing agency to determine the best course of action going forward? This is getting ridiculous.

1. **Standard:** Indicates the “Most Preferred” runway configuration was being utilized at the time of the comment.
Non Standard: Indicates that a “Lesser Preferred” runway configuration was being utilized at the time of the comment.
QHP: QuieterHome Program

2. This column is used to indicate the conditions which most likely necessitated a deviation from the standard procedures.

Comments (SDF/LOU)

October 2013

Street	Zip Code	Time Received	Time	Airport	Disturbance Type	CNF Quad	Status	Operation or Comment Type ¹	Deviation Type ²	Comments
Drayton DR	40205	2013-10-29 16:30:28	2013-10-29 02:00:28	LOU	Noise At Wrong Time	NE	Investigated	Non-Standard	Ops	I would like some information on how I could make a complaint about the helicopter that left the ground about 2:30 this morning and were running long before that. This is not the first time I have heard them. It seems like every now and then they are doing this. I am trying to figure out who I can complain to and why they are doing this. This does not make any sense that they would be making all that racket in the middle of the night.
							Received	LRAA	17	

1. **Standard:** Indicates the “Most Preferred” runway configuration was being utilized at the time of the comment.
Non Standard: Indicates that a “Lesser Preferred” runway configuration was being utilized at the time of the comment.
QHP: QuieterHome Program

2. This column is used to indicate the conditions which most likely necessitated a deviation from the standard procedures.



SDF

QHP

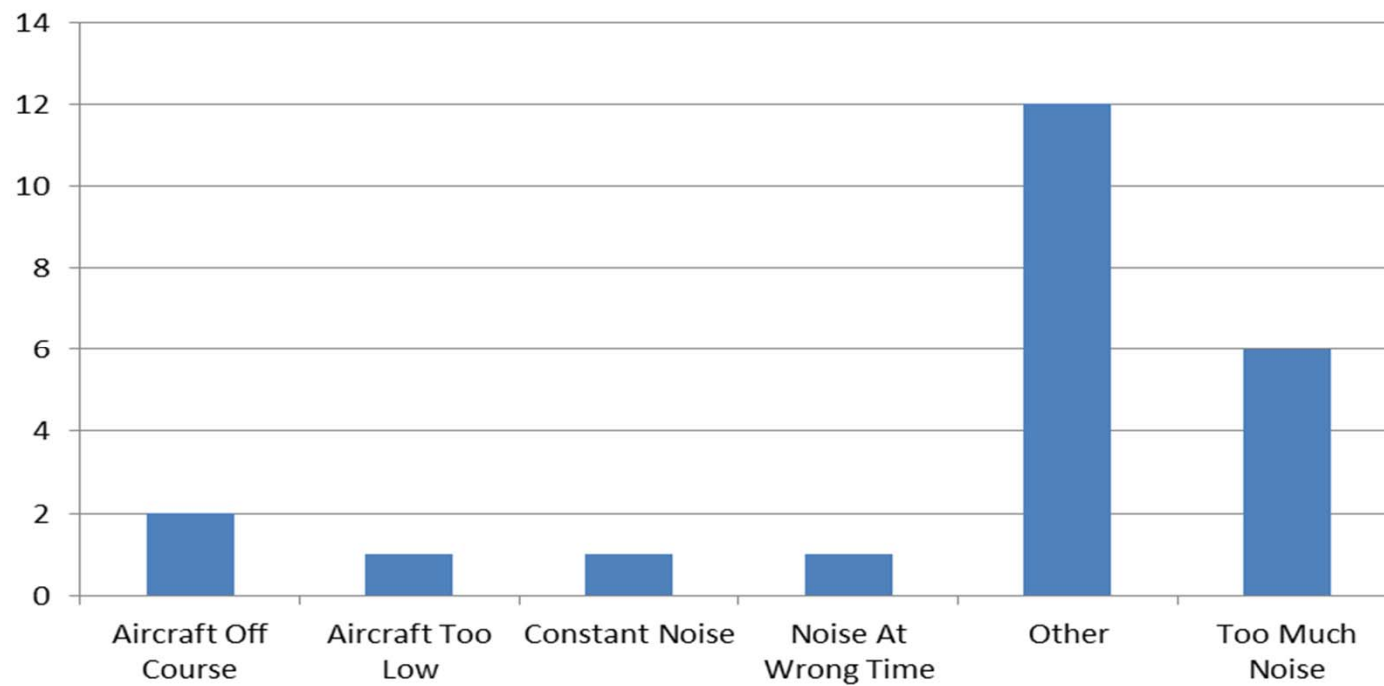
LOU

OTH

Comment Location (SDF and LOU)
October 2013

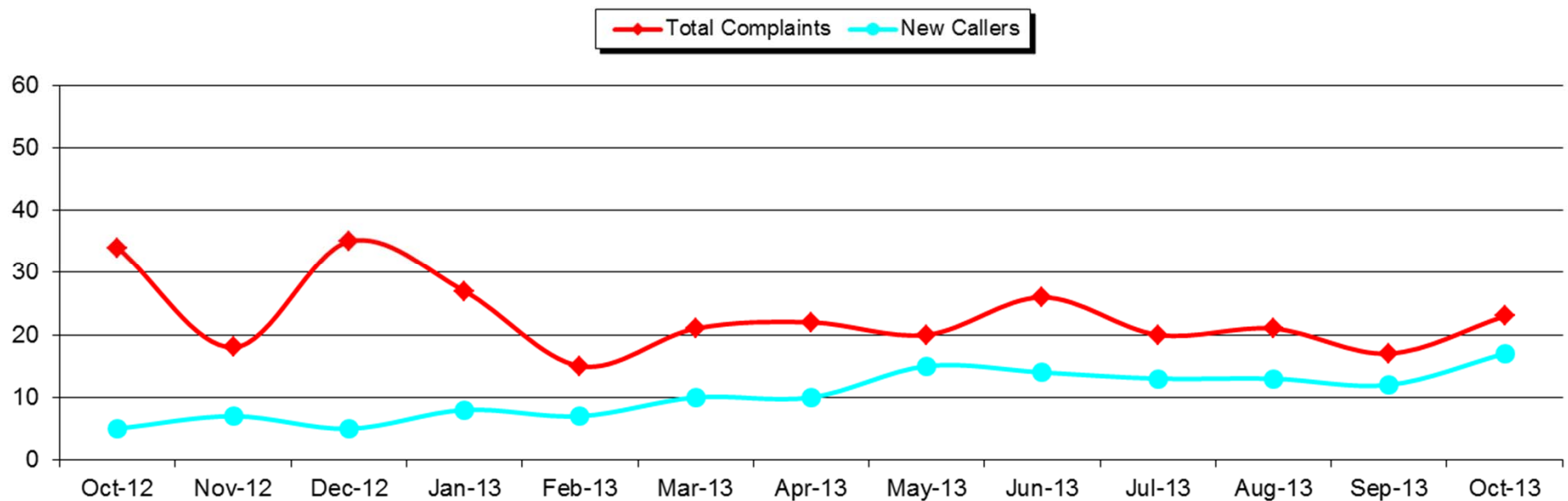
Comment Type* (SDF and LOU)

October 2013



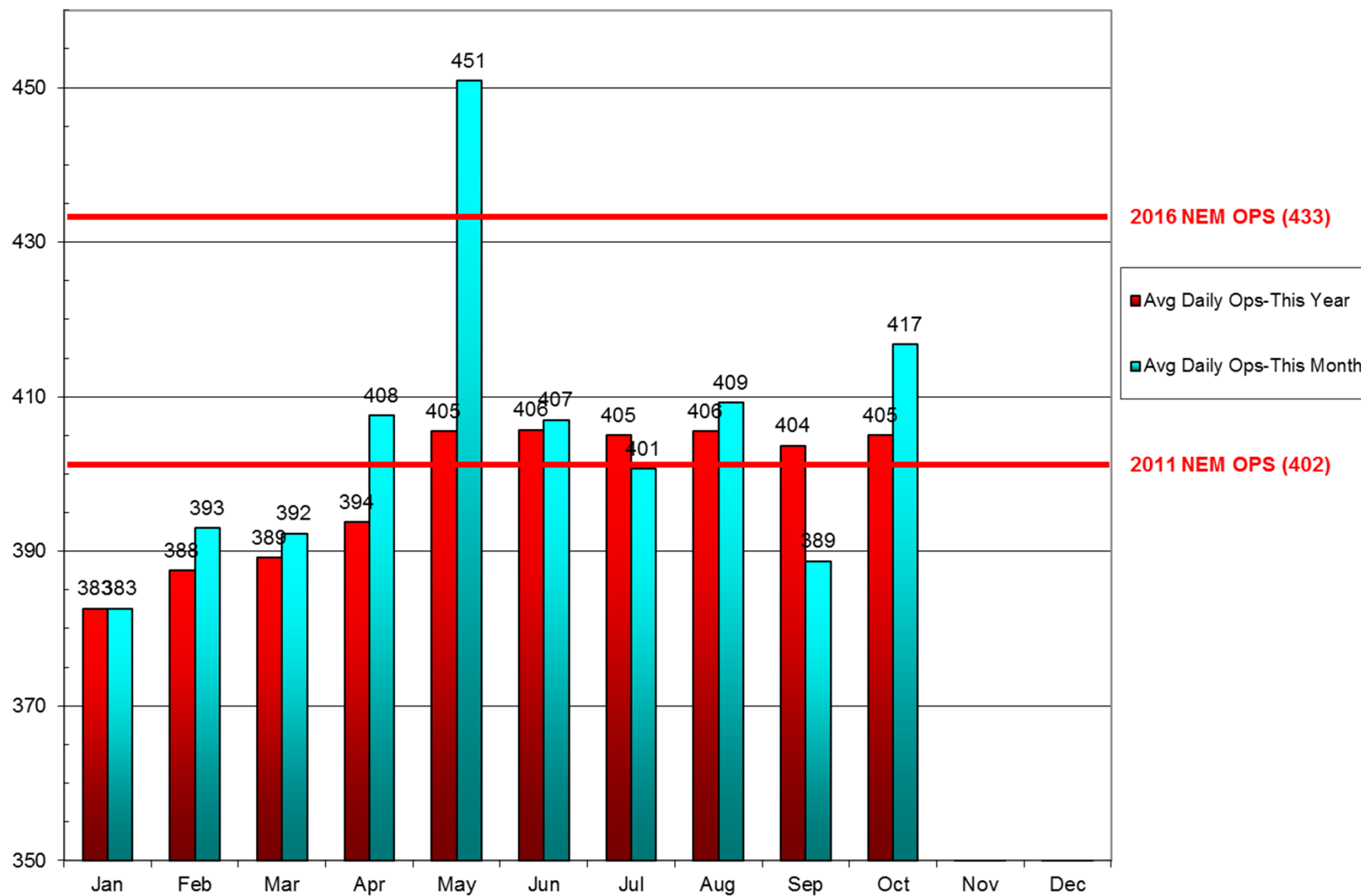
New Address/Comments per Month (SDF and LOU)

October 2013



Operations (SDF)

As of October 31, 2013



Source: Louisville <http://www.flylouisville.com/regional-airport-authority/reports-and-statistics/>

Daily Runway Use Uncorrected (SDF) September 2013

[illegible]

Daily Runway Use (SDF)

Tower Comments September 2013

Day	Date	Time	Comment
sun	1-Sep-13		
mon	2-Sep-13	0930-1030	No valid reason.
tue	3-Sep-13	2000-2130	Wind 0312
wed	4-Sep-13		
thu	5-Sep-13		
fri	6-Sep-13		
sat	7-Sep-13		
sun	8-Sep-13		
mon	9-Sep-13	2200-2400	Wind 1909, 1815 on short final.
tue	10-Sep-13	0000-0230	Wind 1808, 1915 on short final.
tue	10-Sep-13	2200-2400	Wind on final 2315
wed	11-Sep-13	0000-0230	Wind on final 2215
thu	12-Sep-13	1600-2130	Wind 3111, wet runways
fri	13-Sep-13	0300-0700	Wind 0114
sat	14-Sep-13		
sun	15-Sep-13		
mon	16-Sep-13	1930-2130	Wind initially 0114 later within limits but was within short time period of midnight config so stayed north.
tue	17-Sep-13	0300-0700	South until 0356, then north - wind 0310
wed	18-Sep-13	0930-1030	IMC, RWY 35R GS OTS
thu	19-Sep-13		
fri	20-Sep-13	1730-1800	Wind 3111, wet runways
sat	21-Sep-13		
sun	22-Sep-13	0000-1230	South until 0103, then north, wind on final 3622
sun	22-Sep-13	1900-2030	Wind 0307, gust 15kt.
mon	23-Sep-13		
tue	24-Sep-13		
wed	25-Sep-13		
thu	26-Sep-13		
fri	27-Sep-13		
sat	28-Sep-13		
sun	29-Sep-13		
mon	30-Sep-13		

Daily Runway Use Uncorrected (SDF) October 2013

[illegible]

Daily Runway Use (SDF)

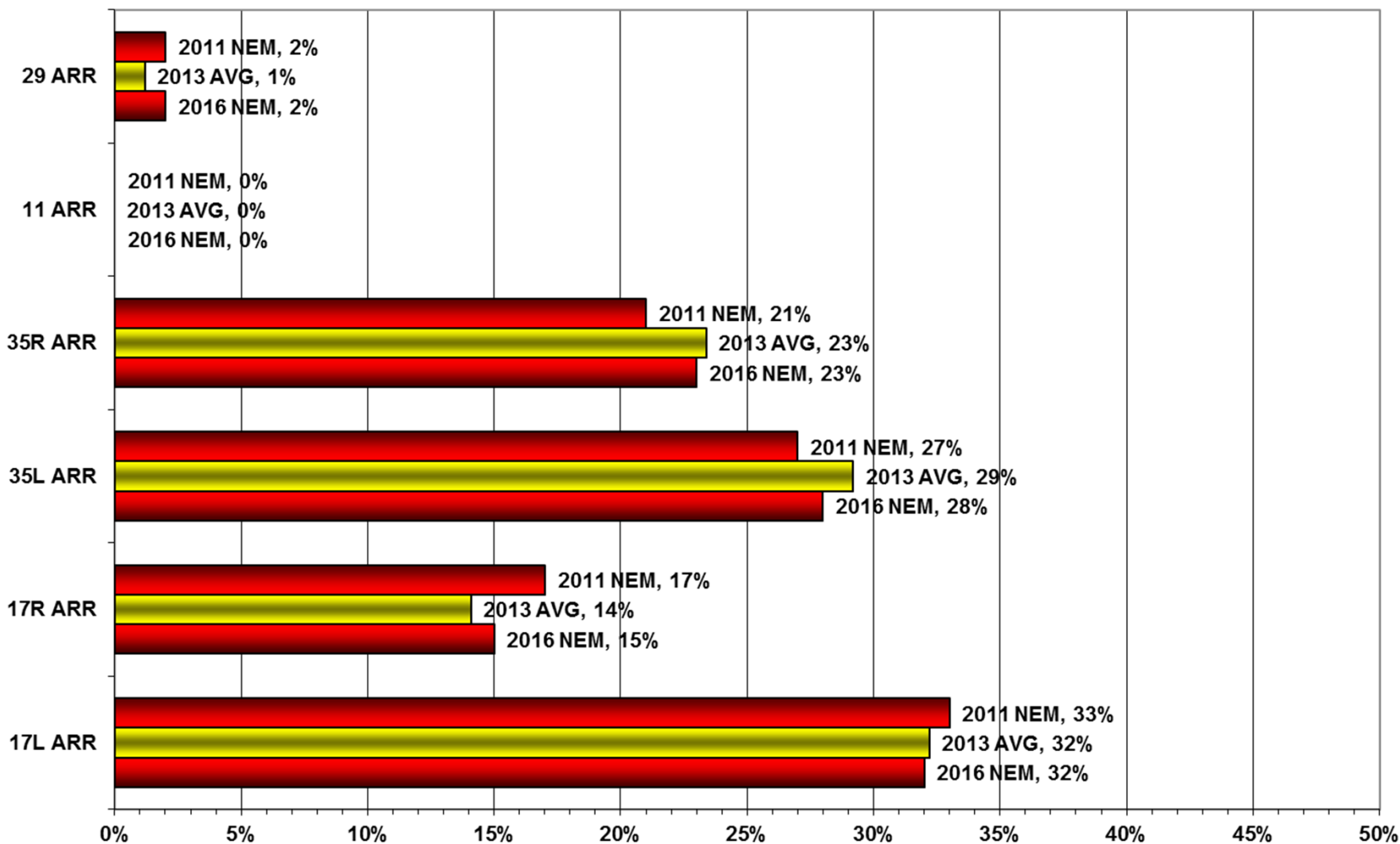
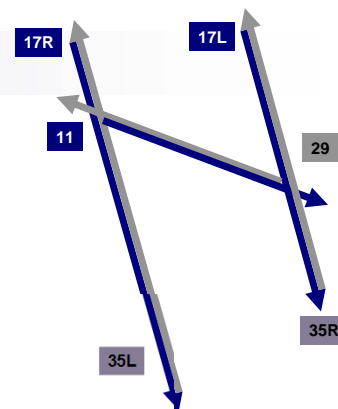
Tower Comments October 2013

Day	Date	Time	Comment
tue	1-Oct-13	1030-1230	Required due to TWY and RWY closures.
wed	2-Oct-13	0930-1230	WX south of arpt, RWY & RWY closures.
thu	3-Oct-13	0930-1230	South wind, wet runways
fri	4-Oct-13		
sat	5-Oct-13		
sun	6-Oct-13		
mon	7-Oct-13	1530-2130	Wind 3211
tue	8-Oct-13	1800-2130	Valid reason not documented
wed	9-Oct-13		
thu	10-Oct-13		
fri	11-Oct-13		
sat	12-Oct-13	0800-1530	RWY 29 required for controller certification.
sun	13-Oct-13		
mon	14-Oct-13	0000-0900	Wind 3609
tue	15-Oct-13	0930-1230	Wind on final 2224, sfc forecast 2010G16.
wed	16-Oct-13		
thu	17-Oct-13	0730-0900	Wind 3508
thu	17-Oct-13	1530-2130	Wind 3112
fri	18-Oct-13		
sat	19-Oct-13	1600-1900	Wind 2912 , Should have gone back at 1702 valid reason not documented
sun	20-Oct-13		
mon	21-Oct-13		
tue	22-Oct-13		
wed	23-Oct-13	1730-2130	Wind 3208
thu	24-Oct-13		
fri	25-Oct-13		
sat	26-Oct-13		
sun	27-Oct-13		
mon	28-Oct-13		
tue	29-Oct-13		
wed	30-Oct-13	0930-1230	Wind 1505, wet runways
wed	30-Oct-13	2200-0000	Wind 1907, strong south winds aloft.
thu	31-Oct-13	0000-0230	Wind 1908

Runway Use (SDF)

Arrivals As of October 31, 2013

NEM vs. Actual

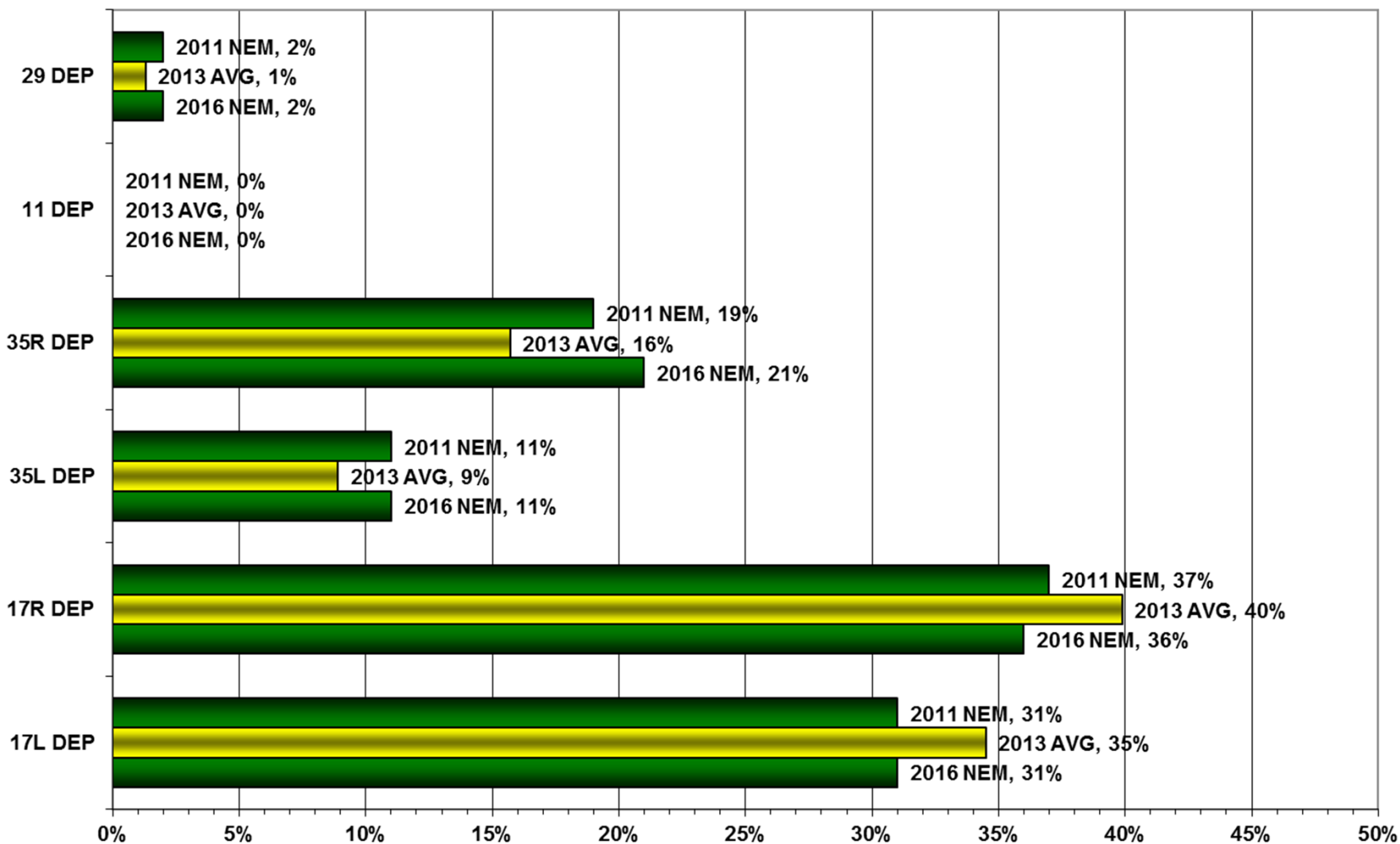


Source: Louisville International Airport
Aircraft Flight Tracking and Noise Management System (AFTNMS)

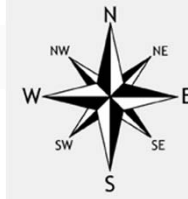
Runway Use (SDF)

Departures As of October 31, 2013

NEM vs. Actual



Source: Louisville International Airport
Aircraft Flight Tracking and Noise Management System (AFTNMS)

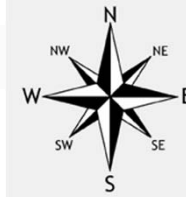


Runway Use 0930L-1230L_(SDF)

As of October 2013

	Arrival Percentage by Runway							Arrival Count	Departure Percentage by Runway							Departure Count
	11	17L	17R	29	35L	35R	% From South		11	17L	17R	29	35L	35R	% To North	
Sep-11	0	16	23	0	33	28	61		0	15	22	1	7	55	62	
Oct-11	0	13	13	5	33	36	69		0	12	11	5	18	54	72	
Nov-11	0	32	21	0	25	22	47		0	35	18	0	4	43	47	
Dec-11	0	21	17	2	42	18	60		0	20	15	3	17	45	62	
Jan-12	0	27	24	9	29	11	40	653	1	33	17	14	14	21	35	306
Feb-12	0	9	18	8	35	30	65	662	0	11	16	10	10	53	63	345
Mar-12	0	30	38	0	15	17	32	684	0	29	36	2	0	33	33	404
Apr-12	0	15	10	1	43	31	74	589	0	13	10	5	17	55	72	336
May-12	0	27	22	0	29	21	50	745	0	25	25	0	15	34	49	449
Jun-12	0	11	16	4	46	26	72	652	0	12	14	4	19	52	71	427
Jul-12	0	6	32	0	49	13	62	619	0	8	27	3	45	17	62	384
Aug-12	0	26	23	0	34	17	51	717	0	24	26	1	21	28	49	437
Sep-12	0	29	10	0	21	40	61	655	0	33	10	1	13	43	56	353
Oct-12	1	20	26	3	20	31	51	740	2	24	19	3	9	43	52	475
Nov-12	0	10	4	3	50	33	83	762	0	7	4	3	9		9	
Dec-12	0	18	12	5	41	24	65	779	0	17	9	3	8	63	71	412
Jan-13	0	16	12	0	42	30	72	742	0	17	16	2	14	52	66	436
Feb-13	0	21	11	9	39	2	41	628	0	21	16	7	12	44	56	354
Mar-13	0	10	6	0	51	33	84	728	0	10	8	3	14	65	79	441
Apr-13	0	24	27	2	27	20	47	719	0	26	23	3	8	40	48	441
May-13	0	33	33	0	20	14	34	785	0	33	31	1	10	25	35	410
Jun-13	0	10	13	0	43	31	74	717	0	8	13	0	22	57	79	534
Jul-13	0	23	10	0	42	25	67	694	0	24	12	0	20	44	64	465
Aug-13	0	22	10	0	43	25	68	725	0	18	13	0	13	56	69	483
Sep-13	0	13	5	0	43	39	82	676	0	14	5	0	25	56	81	448
Oct-13	0	16	14	2	37	31	68	864	0	12	18	3	13	54	67	535
Monthly Avg.	0	19	17	2	36	25	61		0	19	17	3	15	45	60	

Source: Louisville International Airport
Aircraft Flight Tracking and Noise Management System (AFTNMS)



Gate Compliance by Runway

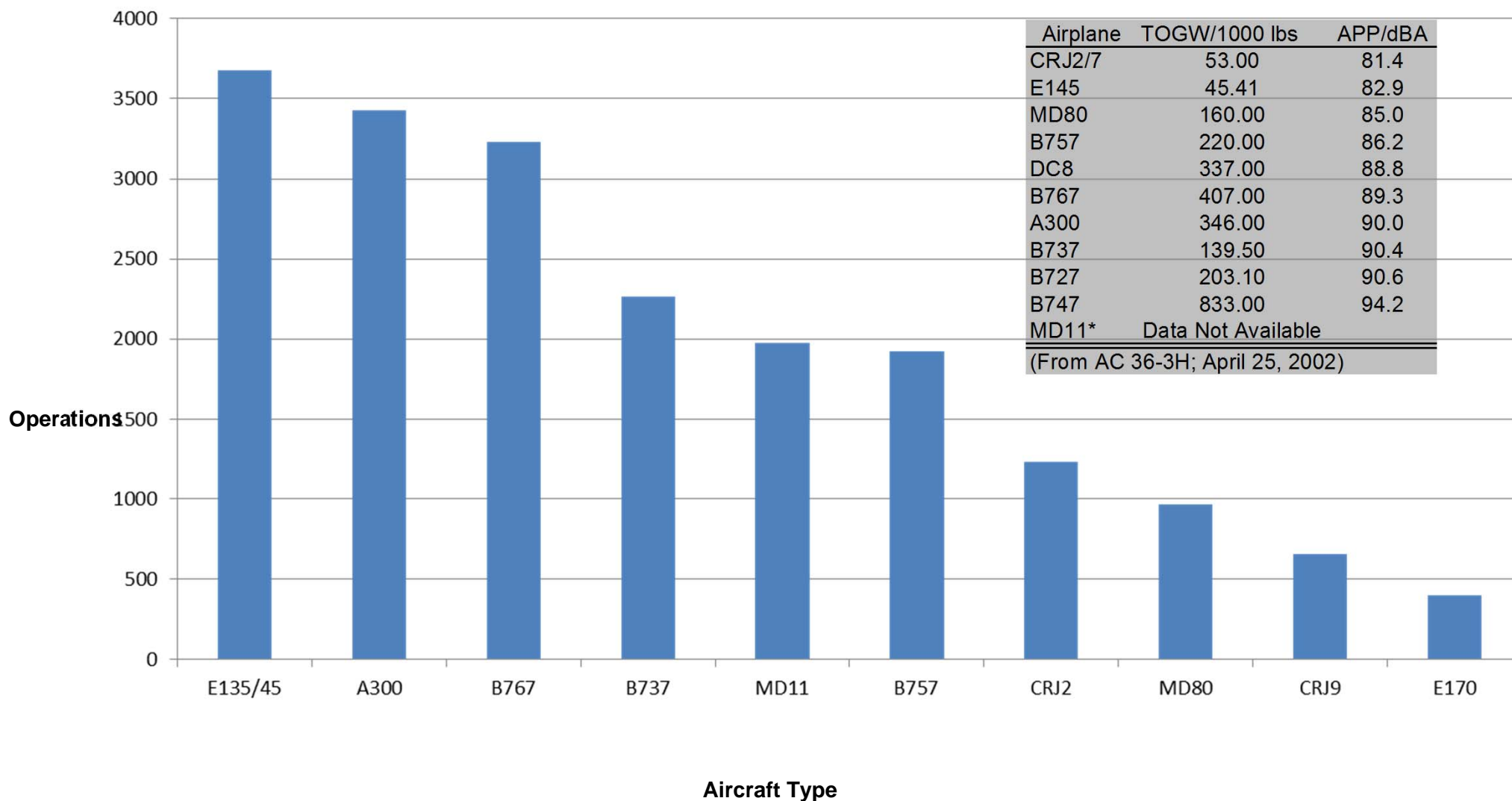
As of October 31, 2013

ARRIVALS Percent Compliant					Departure Percent Compliant					
Month	17L	17R	35L	35R	ARR AVG	17L	17R	35L	35R	DEP AVG
Nov-11	80%	90%	82%	89%	85%	49%	67%	76%	79%	68%
Dec-11	77%	94%	86%	87%	86%	51%	70%	79%	84%	71%
Jan-12	78%	87%	83%	88%	84%	44%	68%	72%	76%	65%
Feb-12	73%	91%	78%	77%	80%	50%	68%	74%	79%	68%
Mar-12	76%	88%	76%	81%	80%	48%	68%	67%	80%	66%
Apr-12	65%	80%	72%	73%	73%	63%	72%	79%	85%	75%
May-12	71%	86%	75%	77%	77%	67%	80%	78%	87%	78%
Jun-12	61%	81%	71%	73%	72%	63%	75%	78%	90%	77%
Jul-12	66%	83%	70%	76%	74%	62%	72%	77%	89%	75%
Aug-12	68%	85%	75%	77%	76%	63%	71%	83%	90%	77%
Sep-12	79%	93%	81%	78%	83%	53%	72%	72%	88%	71%
Oct-12	80%	92%	85%	82%	85%	70%	59%	70%	89%	72%
Nov-12	73%	73%	82%	85%	78%	84%	82%	84%	92%	86%
Dec-12	84%	93%	89%	91%	89%	74%	85%	72%	79%	78%
Jan-13	82%	93%	82%	83%	85%	73%	86%	81%	87%	82%
Feb-13	78%	93%	85%	84%	85%	73%	85%	76%	78%	78%
Mar-13	73%	86%	88%	86%	83%	82%	89%	82%	86%	85%
Apr-13	75%	90%	77%	78%	80%	73%	89%	80%	81%	81%
May-13	81%	87%	78%	77%	81%	70%	84%	76%	92%	81%
Jun-13	73%	84%	76%	82%	79%	76%	88%	74%	86%	81%
Jul-13	82%	87%	81%	82%	83%	81%	84%	76%	91%	83%
Aug-13	78%	89%	79%	81%	82%	78%	83%	78%	92%	83%
Sep-13	78%	88%	76%	81%	81%	79%	86%	77%	93%	84%
Oct-13	77%	90%	83%	79%	82%	75%	90%	77%	90%	83%
24 Month Avg.					81%					77%

Source: Louisville International Airport
Aircraft Flight Tracking and Noise Management System (AFTNMS)

Operations by Aircraft Type (SDF) Only Top 10 Aircraft Types Shown

September/October 2013



Source: Louisville International Airport

Aircraft Flight Tracking and Noise Management System (AFTNMS)