

Community Noise Forum
Monday, September 23, 2013
Agenda

- I. Call to order: 6:00PM
- II. Minutes of July 22, 2013.
- III. Working Group Report: FlyQuiet Awards
- IV. Part 150 NCP
 - A. Update: Noise Insulation Program
 - B. Contraflow Exceptions
- V. Current Noise Concerns
 - A. Noise Concerns/Complaints
 - B. Runway Utilization
 - C. Construction and Maintenance Activity
- VI. Announcements
- VII. Guest Comments
- VIII.. Next Meeting and Holiday Party: Monday, November 25, 2013
- IX. Adjournment:

COMMUNITY NOISE FORUM (CNF)
Monday, July 22, 2013

Members

John Sistarenik, ANA
Pete Levermore, Airline Affairs
Bob Slattery, LRAA
Mary Rose Evans, LRAA Board
Maj. Jason Schmidt, KYANG

Kevin Kays, Southwest
Denny Thompson, Southeast
Pat Gould, Northeast
Larry Owsley, UofL

Guests

Dorn Crawford
Shane Smith

The meeting was called to order at 6:00 p.m. by John Sistarenik. Pete Levermore made a motion to approve the minutes from the May meeting and Mary Rose Evans seconded the motion. The May minutes were approved as written.

John announced that Larry Owsley would be retiring from UofL and will no longer be on the committee. Larry believes that Ken Dietz will be his replacement. Also, Greg Petto will no longer be the FAA representative. His replacement is Chris Younkin.

Part 150 NCP:

A. Updates:

Phase 3A: This phase of work will address sound insulating 22 families. A pre-construction meeting was held on June 20th. Construction began on July 8th and is expected to be completed in September.

Phase 3A-1: The contract for the sound insulation of 22 additional families was awarded to S&L Specialty Contracting of Syracuse, NY. Construction is anticipated to begin later this year.

Phases 4-7: Homeowner workshops were held on June 4th and 5th for phases 4 and 5. Acoustical testing for Phases 4 and 5 began on June 19th. Homeowner workshops for Phases 6 and 7 were completed on July 15th and 16th with acoustical testing scheduled to begin in August.

- B. Contraflow Exceptions:** Contraflow for May was 46% for arrivals from the south and 85% for departures to the south. In June, arrivals from the south were 76% and departures to the south were 85%. For CY-2013 the arrivals are averaging 69% and departures are averaging 80%. A daily summary for May and June 2013 is contained in the handout. A monthly summary going back 8 years is also included in the handout.

Current Noise Concerns:

A. Report on Noise Concerns/Complaints: We received a total of 20 comments in May. 10 comments were comments received at the QHP project office and 10 were received by the LRAA. In June we received a total of 26 comments. 19 were received at the QHP project office and 7 were received by the LRAA. Email comments received in May and June may not appear in the report due to problems with the LRAA email server. These issues have been resolved.

B. Runway Utilization: Runway utilization percentages for May and June are contained in the handout. Daily runway utilization and comments from the Air Traffic Control Tower for May and June are also included in the handout.

C. Construction and Maintenance Activity: Normal Monday closures on the west runway. On the east runway, in addition to the normal Tuesday closures there are two weekend closures scheduled in August and possibly September.

Runway 11-29 Runway Safety Area (RSA) Enhancement Program: The airport has published a notice for a 30-day comment period and will be conducting an informational open house for the draft Environmental Assessment of the Safety Area Program for the crosswind runway. The open house will be on Monday, August 5th at the Fourth Presbyterian Church. The runway safety area enhancements are a congressional mandate, which requires that runway safety areas be compliant with current FAA standards by December 2015. A copy of the report is available at www.flylouisville.com.

Announcements: Mary Rose suggested that the CNF consider giving out a “FlyQuiet” award to thank an individual or organization for complying with our noise program. A press release from the Port of Oakland was included in the handout as one example of a FlyQuiet program. The group agreed that the establishment of a FlyQuiet award would be a good idea. John announced that the CNF is approaching its 10th anniversary as a group and it may be possible to have an awards ceremony at our annual holiday party in November. It was proposed that a Working Group be convened to review possible program criteria. Mary Rose motioned to have a working group get started on this. The motion was seconded by Larry Owsley. A working group meeting was scheduled for August 23rd at 10 AM. Anyone is welcome attend.

Guest Comments: None.

Next Meeting: Monday, September 23, 2013 at 6 p.m.

Adjournment: A motion was made to adjourn the meeting at 6:32pm by Larry Owsley and seconded by Denny Thompson.

UPS Bullets for Community Noise Forum "FlyQuiet" Award

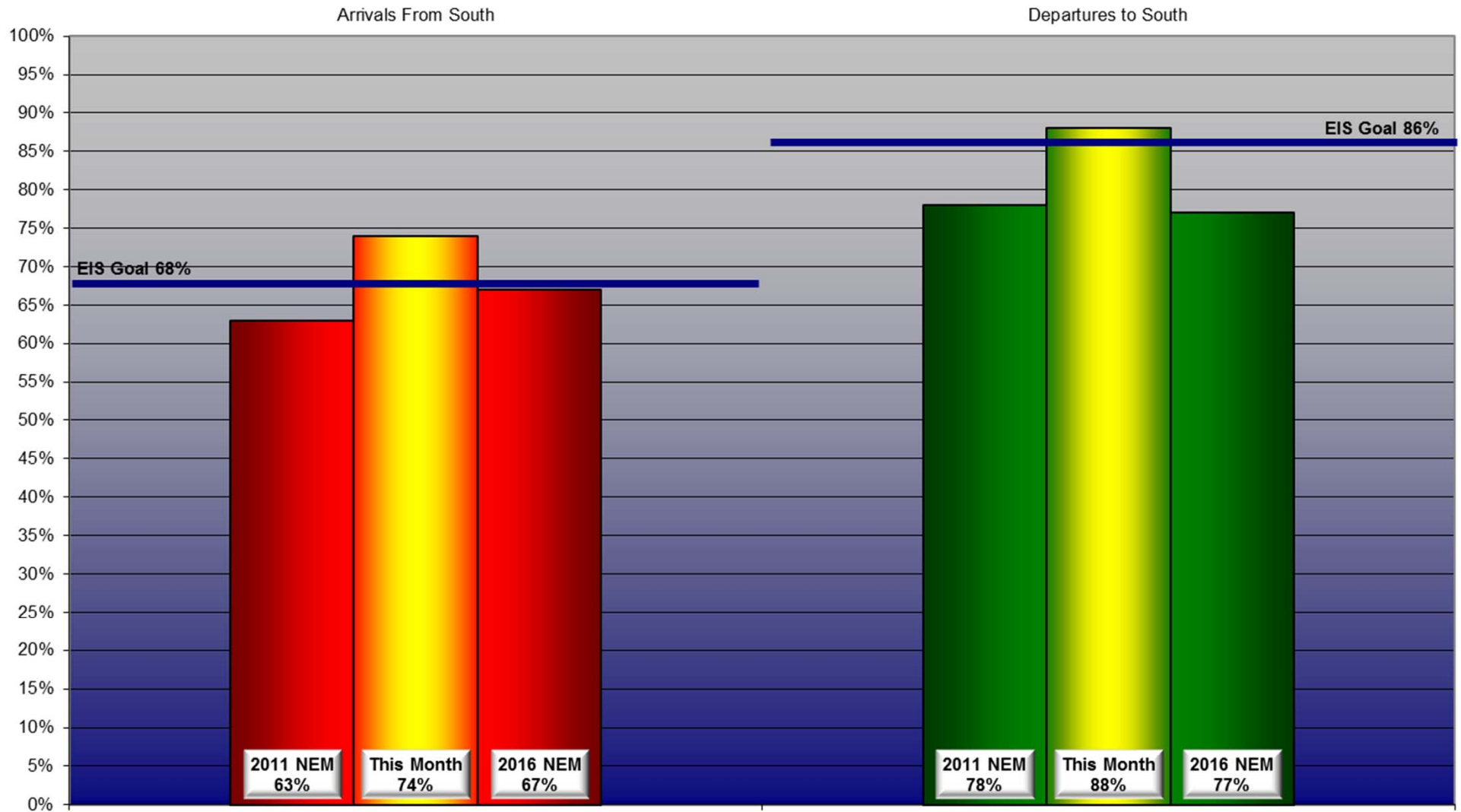
1. **Extensive Noise Compatibility Study Group (NCSG) Participation**
 - a. **Coordinating Council** - 13 member Council met at key decision points during Noise Compatibility Study to review recommendations made by the Study Group and consultant team. Ultimately submitted recommendations on the program to the LRAA Board. (Joe Richardson / Bill Simpson)
 - b. NCSG Meeting #2 Chair (Bill Simpson)
 - c. **Severed as Chair** of Metrics Committee (Bill Simpson)
 - d. Several UPS Pilots served on the Navigation Committee
2. Represented the Airline Affairs Committee since the inception of the Community Noise Forum (CNF) and provided an operations person for many years. A UPS representative has also severed as CNF co-chair from the beginning.
3. **Contraflow**, As the primary noise abatement measure in Louisville, UPS uses "contraflow" approaches and departures. For the nighttime sort, UPS aircraft land from the south on arrival and take off to the south on departure, flying over the city's lesser populated area.
3. **Continuous Descent Arrivals** (aircraft, fuel, man-hours, simulator time). In 2003, UPS began testing the effectiveness of continuous descent arrivals (CDAs) when landing in lieu of stepping down altitudes. With CDAs, planes use idle power to glide down, which makes less noise, burns less fuel and creates fewer emissions. UPS continues to experiment with CDAs in several locations, including Louisville. Test data suggests CDAs help reduce landing noise by 30 percent, nitrous oxide emissions by 34 percent, and save 40-70 gallons of fuel per approach.
4. **Offset Departure and Approach Procedure** (aircraft, fuel, man-hours, simulator time). Worked to develop offset departure and approach procedures which were recommended measures in the Part 150. Also invited CNF members to fly and view actual approach in simulator.
5. Assisted in the **development of RNAV approach and departure procedures** contained in the Part 150.
6. First all noise Stage 3 Fleet in North America.
7. Works with Community Noise Forum to help **reduce exceptions to contraflow**.

Air Traffic Control Tower (ATCT) Bullets for Community Noise Forum "FlyQuiet" Award

1. Extensive Noise Compatibility Study Group (NCSG) Participation

- a. **Coordinating Council** - 13 member Council met at key decision points during Noise Compatibility Study to review recommendations made by the Study Group and consultant team. Ultimately submitted recommendations on the program to the LRAA Board.
 - b. Participated in many NCSG meetings and providing technical support on highly complex Air Traffic Control issues.
2. Implements and controls many elements of the Noise Compatibility Program including the Preferential Runway use Program and Contraflow while retaining adequate safety margins and ensuring efficient use of airspace. The SDF ATCT has always been open to suggestions and willing to explore options which are vital to helping solve complex problems.
3. Active participation in the Community Noise Forum (CNF) since its inception. Provides insight to their extensive technical knowledge and expertise on airspace and operational procedures to the community.
4. Provides feedback to the LRAA and CNF on compliance with noise abatement procedures
5. Worked with the CNF to develop and implement a format for monitoring and reporting on monthly compliance with the preferential runway use program.
6. Provided essential FAA support and guidance for the **development of RNAV approach and departure procedures** contained in the Part 150.
7. Significant contributions of Louisville air traffic controllers helped to make possible the first-ever test of the Continuous Descent Approach (CDA) at Louisville International Airport.

Monthly Contraflow July 01-31, 2013



Daily Runway Use Summary- July 2013

(from 10:00 PM date list in first column to 7:00 AM the following morning)

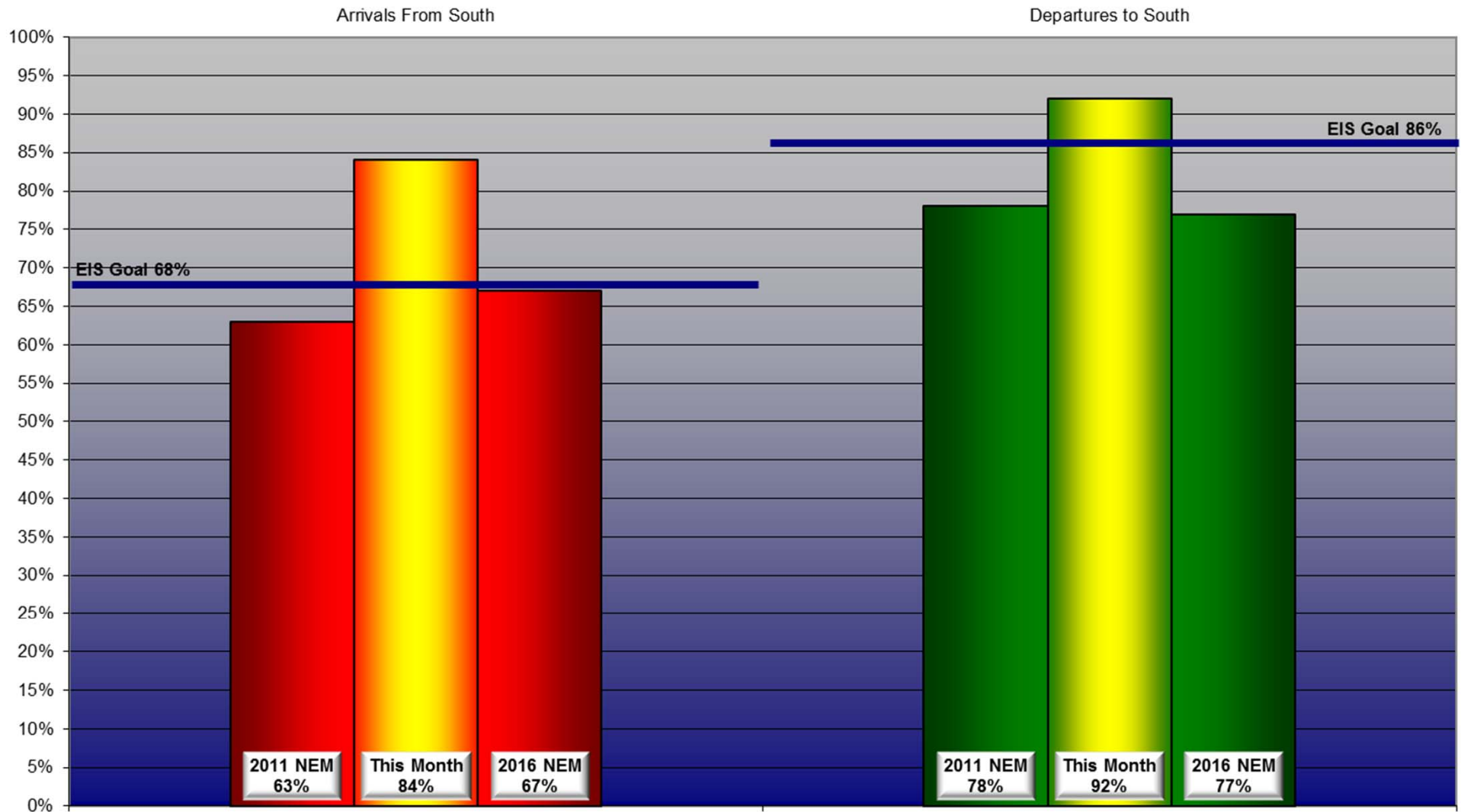
		% of all arrivals from the south										% of all departures to the south											
Date	Day	* in	Runway #							Unknown	Notes /		** in	Runway #							Unknown	Notes /	
		compliance	11	17L	17R	29	35L	35R	Use	Runway				compliance	11	17L	17R	29	35L	35R	Use		
07/01/13	Mon	98%			1	1			61	37	0		93%			38	55			6	1	0	
07/02/13	Tue	91%			6	3			57	34	0		95%			38	57			3	2	0	
07/03/13	Wed	4%			38	58			3	1	0	160-170@3-7knts	97%			36	61			0	3	0	
07/04/13	Thu	0%			27	73					0	100-150@3-7knts	100%			39	61					0	
07/05/13	Fri	0%			51	49					0	160-170@7-11knts,RA	100%			41	59					0	
07/06/13	Sat																						
07/07/13	Sun																						
07/08/13	Mon	94%			5	1			54	40	0		94%			44	50			6		0	
07/09/13	Tue	0%			43	57					0	180-200@4-6knts	100%			45	55					0	
07/10/13	Wed	96%			2	2			54	42	0		87%			38	49			7	6	0	
07/11/13	Thu	100%							57	43	0		0%							55	45	0	010-020@4-6knts
07/12/13	Fri	96%			2	2			55	41	0		96%			39	57			4		0	
07/13/13	Sat																						
07/14/13	Sun																						
07/15/13	Mon	96%			3	1			55	41	0		95%			41	54			3	2	0	
07/16/13	Tue	93%			4	3			55	38	0		95%			45	50			3	2	0	
07/17/13	Wed	95%			3	2			55	40	0		97%			45	52			2	1	0	
07/18/13	Thu	98%			2				56	42	0		96%			40	56			3	1	0	
07/19/13	Fri	56%			25	19			38	18	0	210-220@3-6 knts	100%			43	57					0	
07/20/13	Sat																						
07/21/13	Sun																						
07/22/13	Mon	97%			2	1			56	41	0		93%			41	52			5	2	0	
07/23/13	Tue	99%			1				61	38	0		0%							55	45	0	350-360@8-13knts
07/24/13	Wed	96%			3	1			54	42	0		95%			40	55			2	3	0	
07/25/13	Thu	93%			5	2			52	41	0		95%			41	54			4	1	0	
07/26/13	Fri	95%			2	3			53	42	0		96%			39	57			2	2	0	
07/27/13	Sat																						
07/28/13	Sun																						
07/29/13	Mon	98%			2				57	41	0		95%			41	54			2	3	0	
07/30/13	Tue	1%			48	51			1		0	140-160@3-7knts,RA	100%			45	55					0	
07/31/13	Wed	96%			3	1			55	41	0		96%			38	58			3	1	0	

Preferred Flow

DATIS Reported Conditions Indicate
Support for Non-Preferred Flow

DATIS Reported Conditions Do Not Indicate
Support for Non-Preferred Flow

Monthly Contraflow August 01-30, 2013



Daily Runway Use Summary- August 2013

(from 10:00 PM date list in first column to 7:00 AM the following morning)

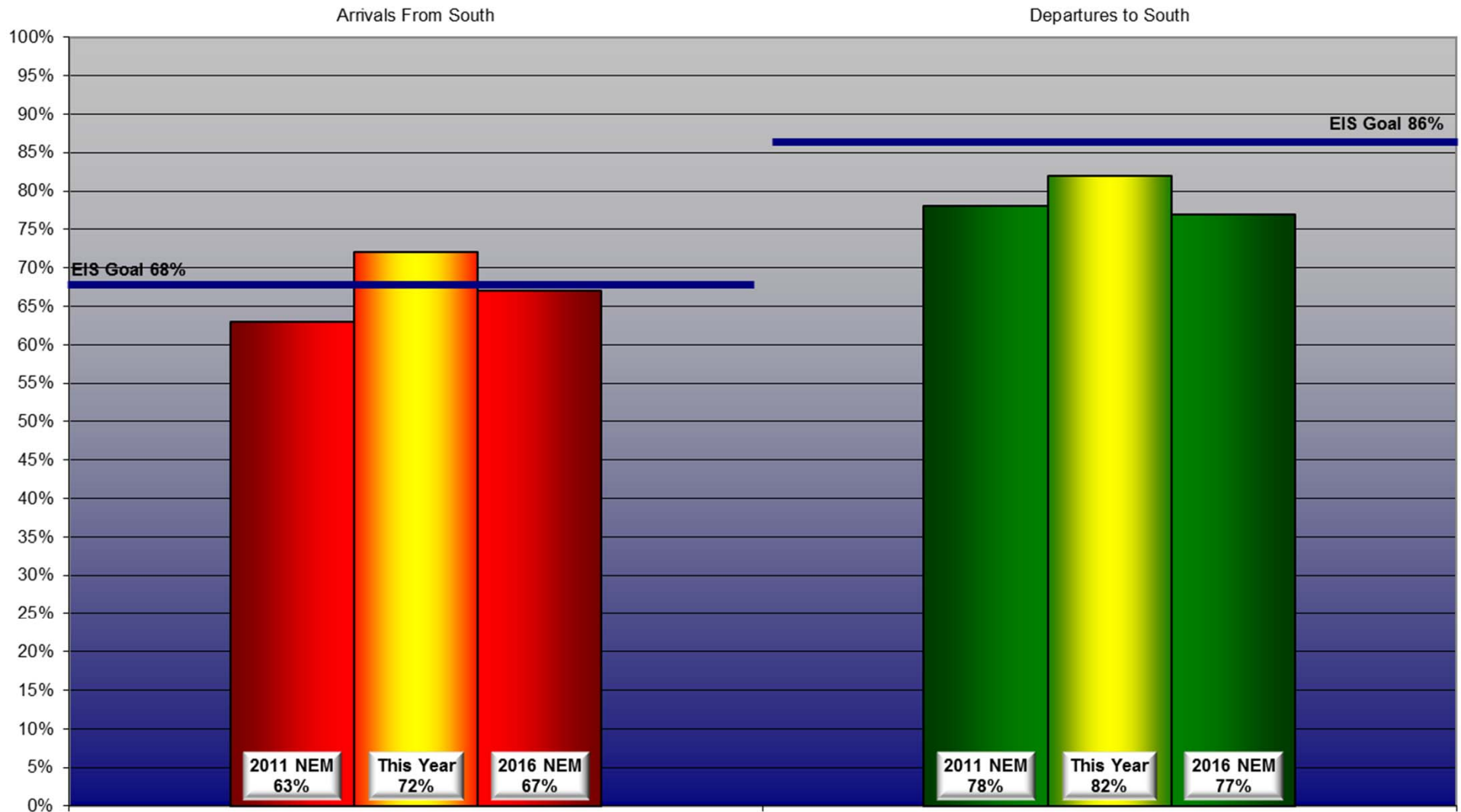
		% of all arrivals from the south										% of all departures to the south												
Date	Day	* in	Runway #							Unknown	Notes /		** in	compliance	Runway #							Unknown	Notes /	
		compliance	11	17L	17R	29	35L	35R	Runway	Use					compliance	11	17L	17R	29	35L	35R	Runway		
08/01/13	Thu	27%			36	37			18	9	0	280-300@3-5knts	99%			43	56				1	0		
08/02/13	Fri	94%			1	5			60	34	0		96%			39	57			2	2	0		
08/03/13	Sat																							
08/04/13	Sun																							
08/05/13	Mon	0%			41	59					0	130-170@4-7knts	100%			45	55					0		
08/06/13	Tue	25%			40	35			17	8	0	170-220@4-6knts	99%			42	57				1	0		
08/07/13	Wed	96%			2	2			51	45	0		95%			40	55			3	2	0		
08/08/13	Thu	96%			1	3			54	42	0		96%			42	54			2	2	0		
08/09/13	Fri	74%			9	17			43	31	0		97%			43	54			1	2	0		
08/10/13	Sat																							
08/11/13	Sun																							
08/12/13	Mon	93%			5	2			55	38	0		96%			41	55			2	2	0		
08/13/13	Tue	99%				1			58	41	0		1%			1				52	47	0	360-010@5-10knts	
08/14/13	Wed	96%			3	1			59	37	0		96%			43	53			2	2	0		
08/15/13	Thu	98%			1	1			59	39	0		88%			41	47			8	4	0		
08/16/13	Fri	93%			2	5			56	37	0		98%			47	51			2		0		
08/17/13	Sat																							
08/18/13	Sun																							
08/19/13	Mon	92%			7	1			54	38	0		94%			43	51			3	3	0		
08/20/13	Tue	98%			2				58	40	0		95%			39	56			3	2	0		
08/21/13	Wed	95%			4	1			54	41	0		97%			44	53			3		0		
08/22/13	Thu	99%			1				62	37	0		95%			39	56			2	3	0		
08/23/13	Fri	96%			2	2			51	45	0		97%			44	53			2	1	0		
08/24/13	Sat																							
08/25/13	Sun																							
08/26/13	Mon	94%			5	1			57	37	0		93%			39	54			5	2	0		
08/27/13	Tue	92%			8				55	37	0		98%			37	61			1	1	0		
08/28/13	Wed	97%			3				52	45	0		95%			45	50			3	2	0		
08/29/13	Thu	95%			4	1			55	40	0		94%			44	50			4	2	0		
08/30/13	Fri	89%			6	5			55	34	0		96%			47	49			1	3	0		

Preferred Flow

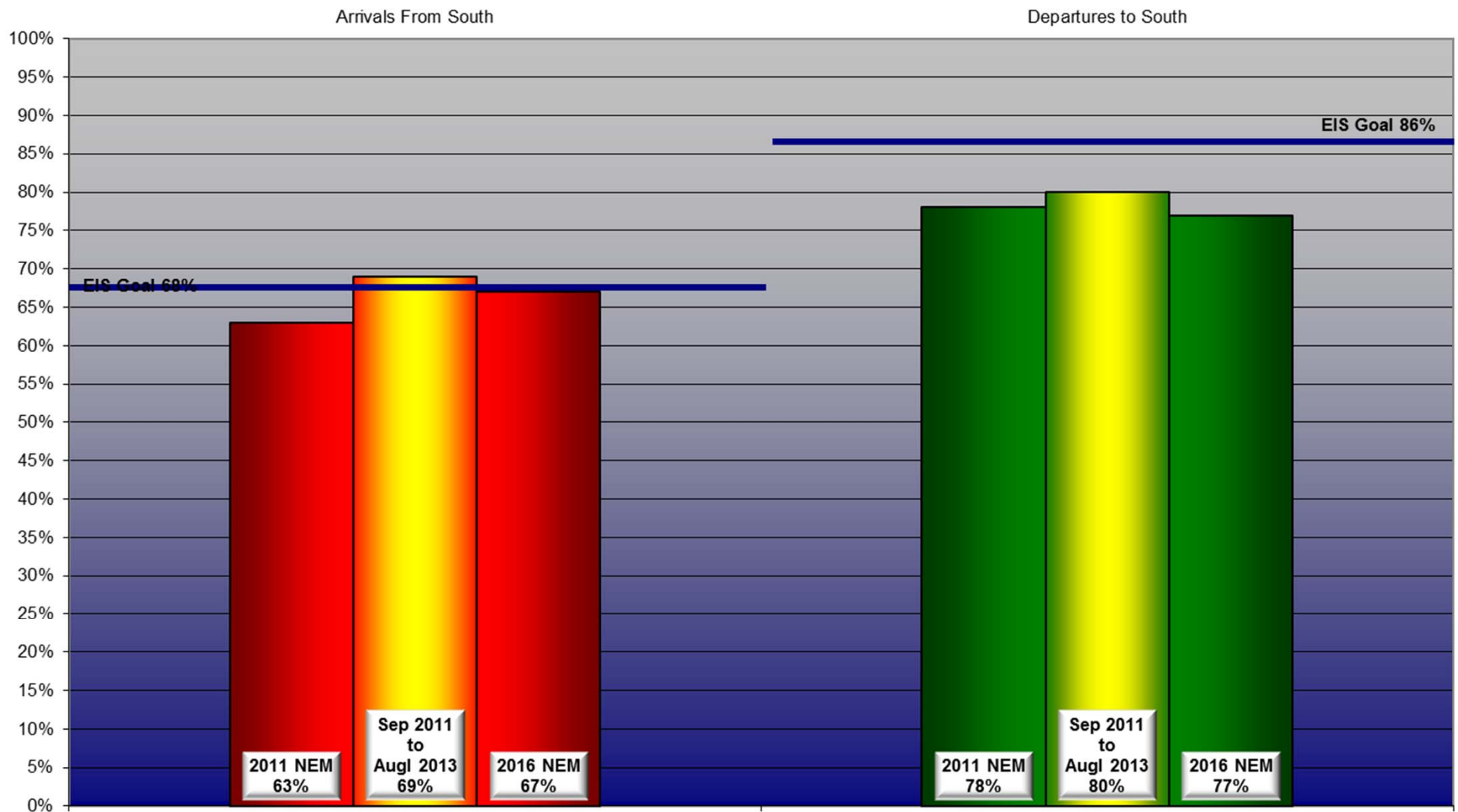
DATIS Reported Conditions Indicate
Support for Non-Preferred Flow

DATIS Reported Conditions Do Not Indicate
Support for Non-Preferred Flow

Yearly Contraflow As Of August 30, 2013



Contraflow September 2011 - August 2013



Year-to-Year by Month Percent*

Contraflow

Arrivals From the South (Goal 68%)										Departures to the South (Goal 86%)									
	2006	2007	2008	2009	2010	2011	2012	2013	Avg		2006	2007	2008	2009	2010	2011	2012	2013	Avg
Jan	54%	39%	50%	63%	94%	91%	62%	72%	66%	Jan	68%	80%	80%	74%	54%	71%	80%	65%	72%
Feb	57%	77%	50%	49%	90%	73%	69%	77%	68%	Feb	74%	76%	74%	81%	71%	63%	74%	78%	74%
Mar	64%	52%	52%	46%	80%	52%	61%	87%	62%	Mar	65%	78%	68%	67%	82%	72%	96%	77%	76%
Apr	61%	61%	44%	53%	57%	47%	78%	60%	58%	Apr	78%	67%	92%	84%	84%	83%	76%	89%	82%
May	71%	71%	66%	66%	56%	69%	72%	46%	65%	May	70%	84%	78%	84%	87%	85%	81%	85%	82%
Jun	84%	64%	38%	72%	66%	61%	79%	76%	68%	Jun	89%	85%	93%	81%	96%	93%	87%	80%	88%
Jul	84%	84%	75%	72%	61%	91%	62%	74%	75%	Jul	88%	85%	84%	82%	90%	88%	92%	88%	87%
Aug	84%	69%	92%	61%	59%	82%	49%	84%	73%	Aug	79%	87%	77%	96%	92%	91%	91%	92%	88%
Sep	84%	79%	91%	89%	70%	85%	55%		79%	Sep	84%	89%	73%	82%	73%	64%	92%		80%
Oct	84%	54%	76%	42%	80%	88%	62%		69%	Oct	76%	68%	77%	71%	78%	63%	78%		73%
Nov	84%	58%	66%	74%	85%	55%	84%		72%	Nov	83%	77%	74%	73%	77%	72%	81%		77%
Dec	84%	53%	58%	71%	67%	70%	64%		67%	Dec	82%	74%	62%	65%	78%	65%	67%		70%
Avg	75%	63%	63%	63%	72%	72%	66%	72%		Avg	78%	79%	78%	78%	80%	76%	83%	82%	

*Number is percentage of all operations between 10:00 PM - 7:00 AM



***LOUISVILLE
REGIONAL
AIRPORT
AUTHORITY®***

NOISE COMMENT REPORT
July 2013

Comments (SDF/LOU)

July 2013

Street	Zip Code	Time Received	Time	Airport	Disturbance Type	CNF Quad	Status	Operation or Comment Type ¹	Deviation Type ²	Comments
Fetter AV	40217	2013-07-02 13:36:48	2013-07-02 13:36:48	SDF	Other	NE	Investigated	LQHP	None	A family friend called concerning eligibility for homeowner.
Reading RD	40217	2013-07-03 08:26:21	2013-07-03 08:26:21	SDF	Other	NE	Investigated	LQHP	NONE	Homeowner called and wants to be included in the program.
Perennial DR	40217	2013-07-10 08:26:21	2013-07-10 08:26:21	SDF	Other	NE	Investigated	LQHP	None	Homeowner says she can see the belly of the planes and cannot believe how low they are over her house. She has to turn the TV to full blast. They are doing noise testing all around her and she is directly in the flight path. She wants to know if she could be tested and be included in the program. She also has questions about military aircraft and the flight pattern.
Bobolink RD	40213	2013-07-10 08:26:21	2013-07-10 08:40:21	SDF	Other	NE	Investigated	LQHP	None	Homeowner called and wanted to know if he was in the program.
Louisa AV	402137	2013-07-10 08:26:21	2013-07-10 08:46:21	SDF	Other	NE	Investigated	LQHP	None	Homeowner called to see if he was eligible for the program because the houses across the street from his were being sound tested.
Reading RD	40213	2013-07-19 08:26:21	2013-07-19 08:55:21	SDF	Other	NE	Investigated	LQHP	None	Homeowner called to inquire about eligibility. He said he just purchased the home in the past week and is very interested in the program.
S Preston ST	40217	2013-07-22 11:01:03	2013-07-22 11:01:03	SDF	Other	NE	Investigated	LQHP	None	Property owner called to inquire about eligibility. She has friends that are in the program and was sure that her property should be. She said that is unbearable when they are trying to have a funeral.

1. **Standard:** Indicates the “Most Preferred” runway configuration was being utilized at the time of the comment.
Non Standard: Indicates that a “Lesser Preferred” runway configuration was being utilized at the time of the comment.
QHP: QuieterHome Program

2. This column is used to indicate the conditions which most likely necessitated a deviation from the standard procedures.

Comments (SDF/LOU)

July 2013

Street	Zip Code	Time Received	Time	Airport	Disturbance Type	CNF Quad	Status	Operation or Comment Type ¹	Deviation Type ²	Comments
Springdale DR	40213	2013-07-25 11:01:03	2013-07-25 11:01:03	SDF	Other	NE	Investigated	LQHP	None	Homeowner called requesting some information about whether or not she was eligible for the program. Someone had told her that she was in phase 2 of the program. She says she has never gotten anything in the mail or heard anything by phone over the past few years.
Alexander AV	40217	2013-07-31 11:01:03	2013-07-31 11:01:03	SDF	Other	NE	Investigated	LQHP	None	I heard the sound testing in the area and wanted to call and sign-up for the program.
							Received	LQHP	9	
W. Ormsby	40203	2013-07-05 23:58:45	2013-07-03 22:00:00	SDF	Over Use of Runway	NW	Investigated	Non-Standard	None	The month of June was pretty good. There were very few nights of planes. In July, here on the night of the 5th and 6th we have planes going overhead and we have had them for the last 3 nights. I called you at the end of May because of the immense number of airplanes. I called you to ask how many of those were absolutely necessary because we had so many between the night of May 8 and May 31. I think there was like 3 or 4 business nights that did not have planes in that time period. Anyhow, I am curious to know about that in May.
Perennial	40217	2013-07-10 09:58:53	2013-07-10 09:58:00	SDF	Other	NE	Investigated	Standard	None	I heard the noise machine out testing homes and would like information on the program. We just moved in in August.

1. **Standard:** Indicates the “Most Preferred” runway configuration was being utilized at the time of the comment.
Non Standard: Indicates that a “Lesser Preferred” runway configuration was being utilized at the time of the comment.
QHP: QuieterHome Program

2. This column is used to indicate the conditions which most likely necessitated a deviation from the standard procedures.

Comments (SDF/LOU)

July 2013

Street	Zip Code	Time Received	Time	Airport	Disturbance Type	CNF Quad	Status	Operation or Comment Type ¹	Deviation Type ²	Comments
Bobolink RD	40213	2013-07-22 10:17:52	2013-07-11 10:17:00	SDF	Too Much Noise	NE	Investigated	Standard	None	Over of the course of the last several months, the number of complaints regarding airport noise has been increasing dramatically. This type of noise pollution has a negative impact on the residents' quality of life of my district. I am writing to you for assistance in this matter because I have no other recourse. Many of these residents have contacted the LRAA or have been to the Community Noise Forum, but do not feel that their complaints are being heard. I would appreciate your sending a response to my constituent listed below. As President of the Metro Council, I am dedicated and committed to addressing the concerns and needs of all citizens of Metro Louisville. Thank you in advance for your prompt attention to this.
Audubon PKY	40213	2013-07-19 08:48:18	2013-07-12 04:00:00	SDF	Over Use of Runway	NE	Investigated	Non-Standard	None	Another unbidden and unwelcome wake-up call in the 4 o'clock hour on Friday, July 12, as the contraflow departure bank roared northward over the nearby neighborhoods, with a modest but distinct tailwind, in the 4-5 knot range. After the contraflow period, the wind abated, and later in the morning shifted to the north, though in amounts well below thresholds for abusive, non-preferred operations. Nevertheless, the north flow continued right on through the unauthorized late-morning reverse-flow period. As noted so often since their development was endorsed in the Louisville noise program more than a decade ago, modern decision aids could avoid miscues like this.

1. **Standard:** Indicates the "Most Preferred" runway configuration was being utilized at the time of the comment.
Non Standard: Indicates that a "Lesser Preferred" runway configuration was being utilized at the time of the comment.
QHP: QuieterHome Program

2. This column is used to indicate the conditions which most likely necessitated a deviation from the standard procedures.

Comments (SDF/LOU)

July 2013

Street	Zip Code	Time Received	Time	Airport	Disturbance Type	CNF Quad	Status	Operation or Comment Type ¹	Deviation Type ²	Comments
Audubon PKY	40213	2013-07-19 09:27:18	2013-07-17 12:30:00	SDF	Over Use of Runway	NE	Investigated	Non-Standard	Weather	After a routine south-flow start to Wednesday, July 17, the late-morning reverse-flow period went by, with winds varying from northeast to northwest, producing runway components of 4 to 7 knots, but no more. But there was no return to preferred south flow; pounding of the nearby neighborhoods continued throughout the afternoon and on into the evening, especially vexing as winds abated entirely and nearby flags could be seen to hang limp as aircraft roared overhead. No enjoyment of outdoor activities for you today, neighbors!
Audubon PKY	40213	2013-07-19 10:05:18	2013-07-18 16:00:00	SDF	Over Use of Runway	NE	Investigated	Non-Standard	None	Yet another 'surprise event' in the airport neighborhoods Thursday, July 18. While brief thunderstorms popped up unpredictably from time to time, there was no wind at all, yet the airfield suddenly shifted to non-preferred north flow during the 4 o'clock hour, just in time to bombard residents with the afternoon departure push. The abuse continued through the remainder of the afternoon and evening, right up to the start of contraflow, still with zero wind. One can't help but be reminded that simple modern decision aids could've discouraged such a misstep, yet here we are, more than a decade after the airport authority committed to developing and deploying them, and no results in sight. If just the analytical appeal of the idea weren't enough, how can the mountain of evidence accumulating for their need since then have failed to do the trick?

1. **Standard:** Indicates the "Most Preferred" runway configuration was being utilized at the time of the comment.
Non Standard: Indicates that a "Lesser Preferred" runway configuration was being utilized at the time of the comment.
QHP: QuieterHome Program

2. This column is used to indicate the conditions which most likely necessitated a deviation from the standard procedures.

Comments (SDF/LOU)

July 2013

Street	Zip Code	Time Received	Time	Airport	Disturbance Type	CNF Quad	Status	Operation or Comment Type ¹	Deviation Type ²	Comments
McCoy AV	40215	2013-07-24 16:20:00	2013-07-24 16:00:00	SDF	Aircraft Off Course	NW	Investigated	Non-Standard	Weather	It is 4:15 P.M. and one of your airplanes just went flying by over my house. I just wanted to let you know that I saw another one coming out and it does not look like there are any windy conditions or anything like that but there may be upstairs or something. Have a nice day. Don't take this as a negative comment. I am just calling to let you know that one came over McCoy and every so often I still hear them. More towards Friday than Monday and early in the morning.
McCoy AV	40215	2013-07-25 16:20:00	2013-07-25 19:00:00	SDF	Aircraft Off Course	NW	Investigated	Non-Standard	None	I just wanted to let you know that a minute ago a plane flew over the house. He would have come directly over. Anyway like I said yesterday I am not mad I just wanted to let you know that they do come over and they come over early in the morning at times.
Cross Bill AV	40213	2013-07-30 13:09:53	2013-07-30 12:30:00	SDF	Other	NE	Investigated	Standard	None	I am calling about the program for assistance with windows and roof discoloration from the airplanes. I heard from a neighbor that you may be able to help with replacing windows
Drayton DR	40205	2013-07-30 13:20:53	2013-07-30 13:20:00	LOU	Other	NE	Investigated	Standard	None	I was checking to see if there is any impact on this property. Is it considered to be in a noise zone?

1. **Standard:** Indicates the “Most Preferred” runway configuration was being utilized at the time of the comment.
Non Standard: Indicates that a “Lesser Preferred” runway configuration was being utilized at the time of the comment.
QHP: QuieterHome Program

2. This column is used to indicate the conditions which most likely necessitated a deviation from the standard procedures.

Comments (SDF/LOU)

July 2013

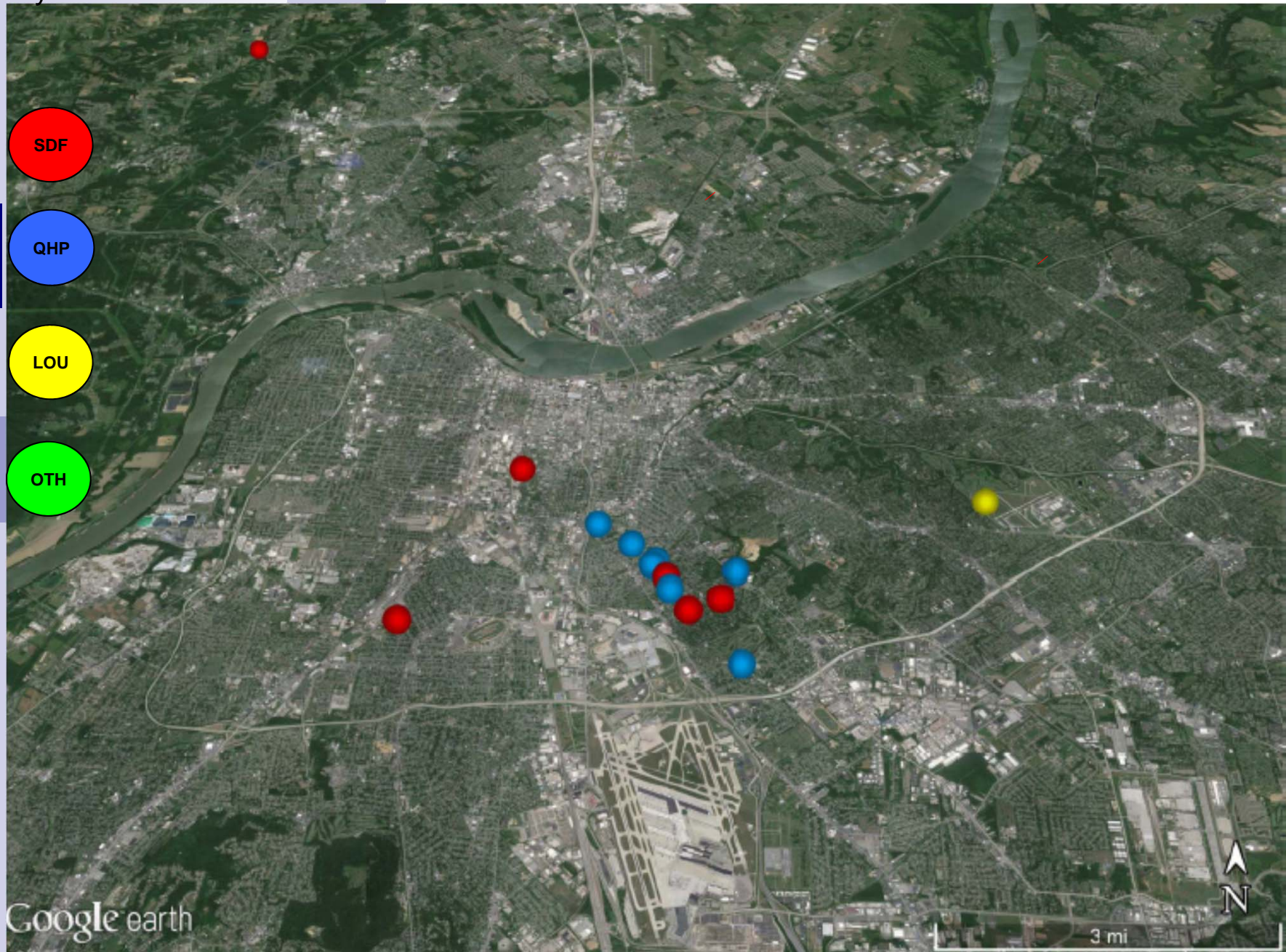
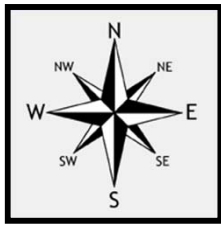
Street	Zip Code	Time Received	Time	Airport	Disturbance Type	CNF Quad	Status	Operation or Comment Type ¹	Deviation Type ²	Comments
Ridgeview DR	47119	2013-07-30 21:52:12	2013-07-30 21:00:00	SDF	Aircraft Too Low	NW	Investigated	Standard	None	<p>I live in Floyd's Knobs, Indiana near the TV towers. For months we have been experiencing planes flying so low they are lower than the top of the TV towers and low enough that they sound as if they'll crash into my house. Tonight I experienced a plane flying so low that I could clearly see everything on the bottom of the plane. As a matter of fact, I thought it was a helicopter it was so low.</p> <p>I am requesting that you look into this matter. It is frightening to be lying in bed only to be awakened by a plane that is flying so low it feels as if they'll crash into your home.</p>
							Received	LRAA	11	

1. **Standard:** Indicates the "Most Preferred" runway configuration was being utilized at the time of the comment.
Non Standard: Indicates that a "Lesser Preferred" runway configuration was being utilized at the time of the comment.
QHP: QuieterHome Program

2. This column is used to indicate the conditions which most likely necessitated a deviation from the standard procedures.

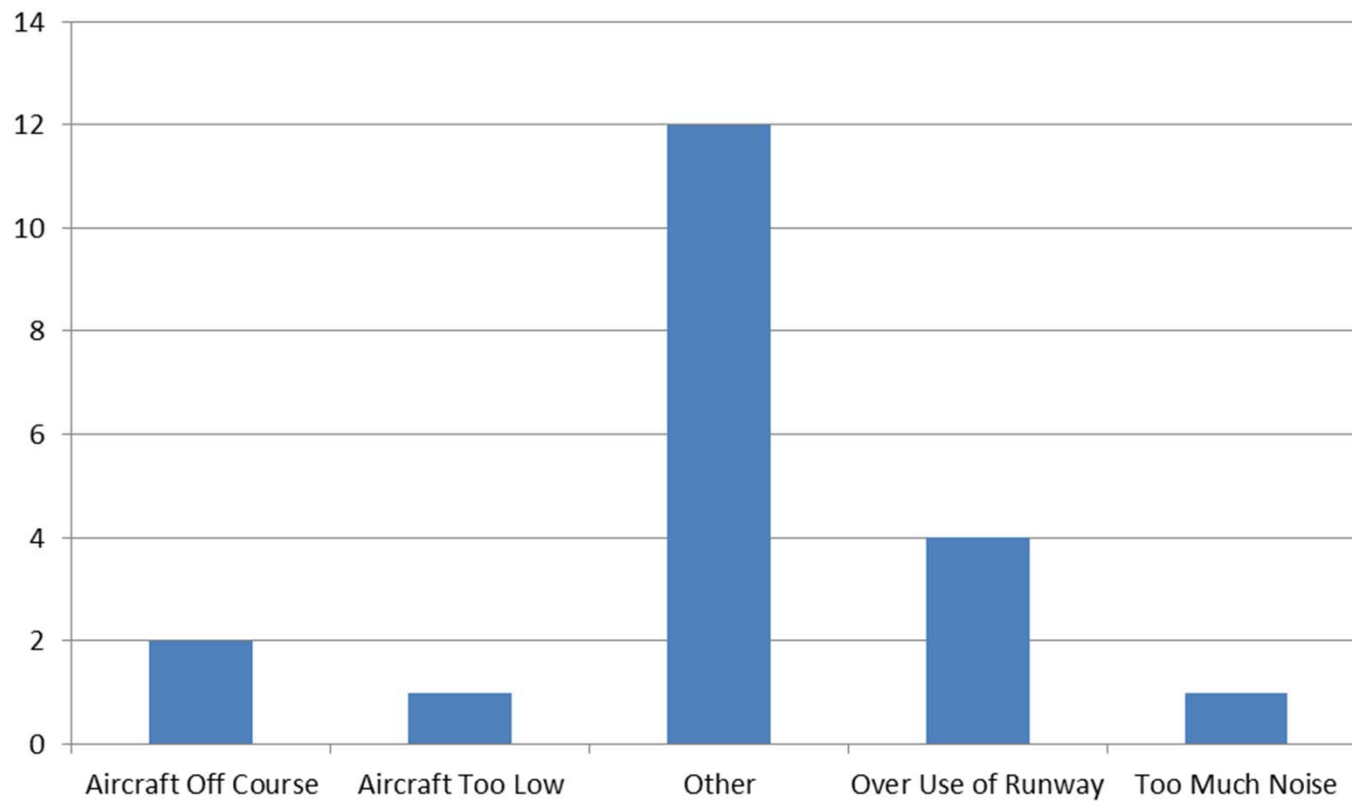
Comment Location (SDF and LOU)

July 2013



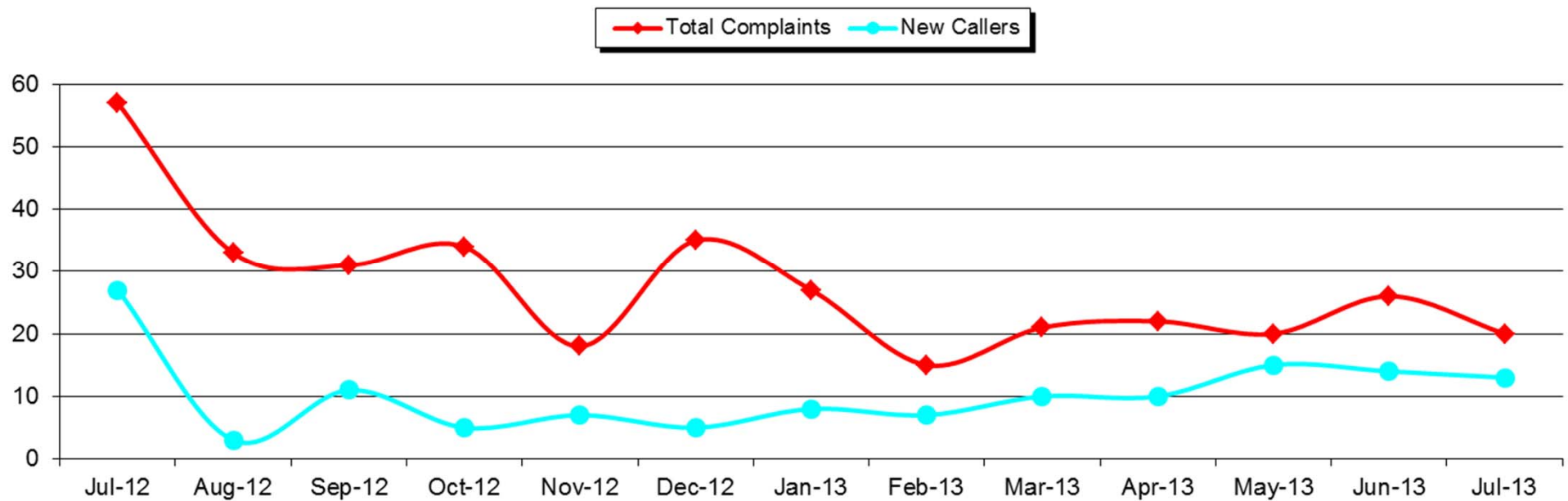
Comment Type* (SDF and LOU)

July 2013



New Address/Comments per Month (SDF and LOU)

July 2013





***LOUISVILLE
REGIONAL
AIRPORT
AUTHORITY®***

NOISE COMMENT REPORT
August 2013

Comments (SDF/LOU)

August 2013

Street	Zip Code	Time Received	Time	Airport	Disturbance Type	CNF Quad	Status	Operation or Comment Type ¹	Deviation Type ²	Comments
Filson AV	40217	2013-08-07 08:52:05	2013-08-07 08:52:05	SDF	Other	NE	Investigated	LQHP	None	Homeowner called to see if her property was eligible.
Melford AV	40217	2013-08-07 08:52:05	2013-08-07 08:52:05	SDF	Other	NE	Investigated	LQHP	None	Homeowner called and said that his home is ineligible. However, he wanted to know that if another home dropped out near his home, would his be considered?
Fetter AV	40217	2013-08-08 08:52:05	2013-08-08 10:20:05	SDF	Other	NE	Investigated	LQHP	None	Homeowner called again asking why people on her street were being sound tested and why they didn't have equipment to test her home. She complained about how loud the UPS planes are and how her sister, who has a disability, cannot stand it.
Fetter AV	40217	2013-08-15 08:52:05	2013-08-15 03:52:05	SDF	Other	NE	Investigated	LQHP	None	Homeowner called to see if they were eligible for the program because her neighbors had told her that she was.
English AV	40217	2013-08-19 08:52:05	2013-08-19 08:52:05	SDF	Other	NE	Investigated	LQHP	None	Homeowner called to check on eligibility.
Navaho PL	40215	2013-08-19 08:52:05	2013-08-19 08:52:05	SDF	Other	SW	Investigated	LQHP	None	Homeowner called and requested that we send him an ineligible brochure so that he can do something to help with the noise around his home.

1. **Standard:** Indicates the "Most Preferred" runway configuration was being utilized at the time of the comment.
Non Standard: Indicates that a "Lesser Preferred" runway configuration was being utilized at the time of the comment.
QHP: QuieterHome Program

2. This column is used to indicate the conditions which most likely necessitated a deviation from the standard procedures.

Comments (SDF/LOU)

August 2013

Street	Zip Code	Time Received	Time	Airport	Disturbance Type	CNF Quad	Status	Operation or Comment Type ¹	Deviation Type ²	Comments
Greenleaf RD	40213	2013-08-19 10:52:05	2013-08-19 10:52:05	SDF	Other	NE	Investigated	LQHP	None	I recently viewed the map for Phase 3 of the Quieter Home Program on-line and discovered that our home is just several houses away from the cut off for qualifying homes. We live on Greenleaf Road. We were told by a neighbor that at one time the map extended to the end of our block and it would have included our house. Is there a reason that we were dropped from the program? We experience just as much airport noise as the homes 3 houses over. The constant airport noise especially affects my children's 2nd floor bedrooms since they are on the Preston Highway side. This past month we are also getting a tremendous amount of noise from circling helicopters near the fairgrounds as well. Is there an appeals process available? Thank you for your time.
Navaho PL	40215	2013-08-22 10:52:05	2013-08-22 10:52:05	SDF	Other	SW	Investigated	LQHP	None	Homeowner called again to see if his house qualifies.
Eastern PKY	40217	2013-08-29 10:52:05	2013-08-29 10:52:05	SDF	Other	NE	Investigated	LQHP	None	Homeowner called to see if they were eligible for the program.
							Received	LQHP	9	
Hess LN	40217	2013-08-01 15:19:13	2013-08-01 15:00:00	SDF	Too Much Noise	NE	Investigated	Non-Standard	Weather	I got my hands on a dB meter and set it out on the back porch. The planes going over are above 65 dB.
Hess LN	40217	2013-08-01 18:34:13	2013-08-01 18:00:00	SDF	Too Much Noise	NE	Investigated	Non-Standard	Weather	The planes are still coming over and they are louder than 65 dB. 14 flights came over and the average of all of them was above 65 dB.

1. **Standard:** Indicates the "Most Preferred" runway configuration was being utilized at the time of the comment.
Non Standard: Indicates that a "Lesser Preferred" runway configuration was being utilized at the time of the comment.
QHP: QuieterHome Program

2. This column is used to indicate the conditions which most likely necessitated a deviation from the standard procedures.

Comments (SDF/LOU)

August 2013

Street	Zip Code	Time Received	Time	Airport	Disturbance Type	CNF Quad	Status	Operation or Comment Type ¹	Deviation Type ²	Comments
McCoy AV	40215	2013-08-02 09:36:13	2013-08-02 09:00:00	SDF	Aircraft Off Course	NW	Investigated	Non-Standard	Ops	About 2 minutes ago a private plane flew over landing at the airport.
Tyler LN	40205	2013-08-04 13:24:13	2013-08-04 13:00:00	LOU	Too Much Noise	NE	Investigated	Standard	None	The number of planes along with their speed and low-flying approaches need to be investigated. A phone number with a direct responder, not an e-mail address is the appropriate means for this communication. I expect an answer to this e-mail and this information will be brought to the attention of the city and our Kingsley oversight committee. When I attempted to contact Bowman Field directly on this date, I received no answer and was unable to leave a message.
Ridgewood AV	40217	2013-08-07 14:00:00	2013-08-07 14:00:00	SDF	Other	NE	Investigated	Standard	None	I would like to know if I am in the program area. I have gone to all the meetings and was expecting to get something but when I saw them testing the house across the street from where I work it got me really upset. I want to know why I have not been contacted.
Fetter AV	40217	2013-08-08 09:00:13	2013-08-08 09:00:00	SDF	Other	NE	Investigated	Standard	None	Our house is in the direct flight path. My sister has cerebral palsy and every time a plane goes over she literally jumps out of the bed. We have been waiting for years. How come we have not yet been contacted about the sound insulation? They told me I was on the list but I do not have any paperwork because it got packed up because we are having an addition put on our house.

1. **Standard:** Indicates the “Most Preferred” runway configuration was being utilized at the time of the comment.
Non Standard: Indicates that a “Lesser Preferred” runway configuration was being utilized at the time of the comment.
QHP: QuieterHome Program

2. This column is used to indicate the conditions which most likely necessitated a deviation from the standard procedures.

Comments (SDF/LOU)

August 2013

Street	Zip Code	Time Received	Time	Airport	Disturbance Type	CNF Quad	Status	Operation or Comment Type ¹	Deviation Type ²	Comments
Greenup RD	40217	2013-08-13 10:33:25	2013-08-13 04:00:00	SDF	Too Much Noise	NE	Investigated	Standard	None	It has gotten that the planes take off early in the morning for about three to four hours over my house which wakes me up. I live on Greenup Road and sometimes it shakes my house, it has really gotten bad in the last year or so. I am 70 years young and would like a good night's sleep.
Fetter AV	40217	2013-08-15 13:15:52	2013-08-15 12:45:00	SDF	Other	NE	Investigated	Standard	None	I would like to know why the house directly across the street is in the sound insulation program and we are not. You cannot tell me that it is quieter at my house when the planes go directly over my house. Who do I need to call about this? I will call my congressman, the WAVE 3 trouble shooter or anyone else that will listen. This is just not right.
Dresden AV	40215	2013-08-17 20:12:14	2013-08-17 12:00:00	SDF	Too Much Noise	NE	Investigated	Non-Standard	Ops	We live near Churchill Downs, and all day today helicopters have been hovering over our neighborhood. They are so low that I've missed 2 phone calls because the noise prevented me from hearing our phone ring. On Oaks day, a helicopter was so low around here (probably about S. Fifth and Evelyn), that we couldn't even hear the race on TV. Supposedly, our county has noise ordinances, but don't they apply to TV news helicopters?
Navaho PL	40215	2013-08-19 14:00:52	2013-08-19 13:30:00	SDF	Other	SW	Investigated	Standard	None	I am calling to see if you have any information on what I can do to help reduce the noise inside my house. It seems to be really bad when the planes land from the north and use reverse thrust.

1. **Standard:** Indicates the "Most Preferred" runway configuration was being utilized at the time of the comment.
Non Standard: Indicates that a "Lesser Preferred" runway configuration was being utilized at the time of the comment.
QHP: QuieterHome Program

2. This column is used to indicate the conditions which most likely necessitated a deviation from the standard procedures.

Comments (SDF/LOU)

August 2013

Street	Zip Code	Time Received	Time	Airport	Disturbance Type	CNF Quad	Status	Operation or Comment Type ¹	Deviation Type ²	Comments
S 1st ST	40214	2013-08-28 10:25:19	2013-08-20 00:00:01	SDF	Too Much Noise	SW	Investigated	Standard	None	<p>I am directing this letter to you (personally) because none of the agencies that have been put in place to advise and assist citizens are able to do so. I have resided at this current address in the Meridale Neighborhood for over thirty-five years. My husband and I have remained here for several reasons. It was a tidy, friendly, safe, and convenient location. We were also able to maintain this home and property financially, educate our daughter so she could become a productive, tax-paying citizen, and invest and save so we would not become a burden on the state in our old age. Seems we've stayed about twenty years too long for some very obvious reasons. My issue today is the NOISE POLLUTION from I guess, UPS cargo planes. The airport has always been here (along with the Watterson Expressway and railroad tracks) but until now, without discomfort. Expressway expansion has created (and sadly so) more noise. The airport expansion has created a monster? What is it going to be like when the current foliage and canopy has died away for winter? There is no longer a sufficient buffer zone. These planes rumble and roar, leaving every few minutes, all night long.</p> <p>I feel like I am lying on a cot on the tarmac. Sleep deprivation is a horrible thing and there are a few of us left in this area (rapidly becoming Section 8) that still hold jobs and go to work. My house is built like a tank, all brick concrete, studs every 8 inches, multi-inch thick plaster walls, heavy windows and doors, storm windows and doors, and mature foliage in the neighborhood.</p> <p>(truncated for space)</p>

1. **Standard:** Indicates the "Most Preferred" runway configuration was being utilized at the time of the comment.
Non Standard: Indicates that a "Lesser Preferred" runway configuration was being utilized at the time of the comment.
QHP: QuieterHome Program

2. This column is used to indicate the conditions which most likely necessitated a deviation from the standard procedures.

Comments (SDF/LOU)

August 2013

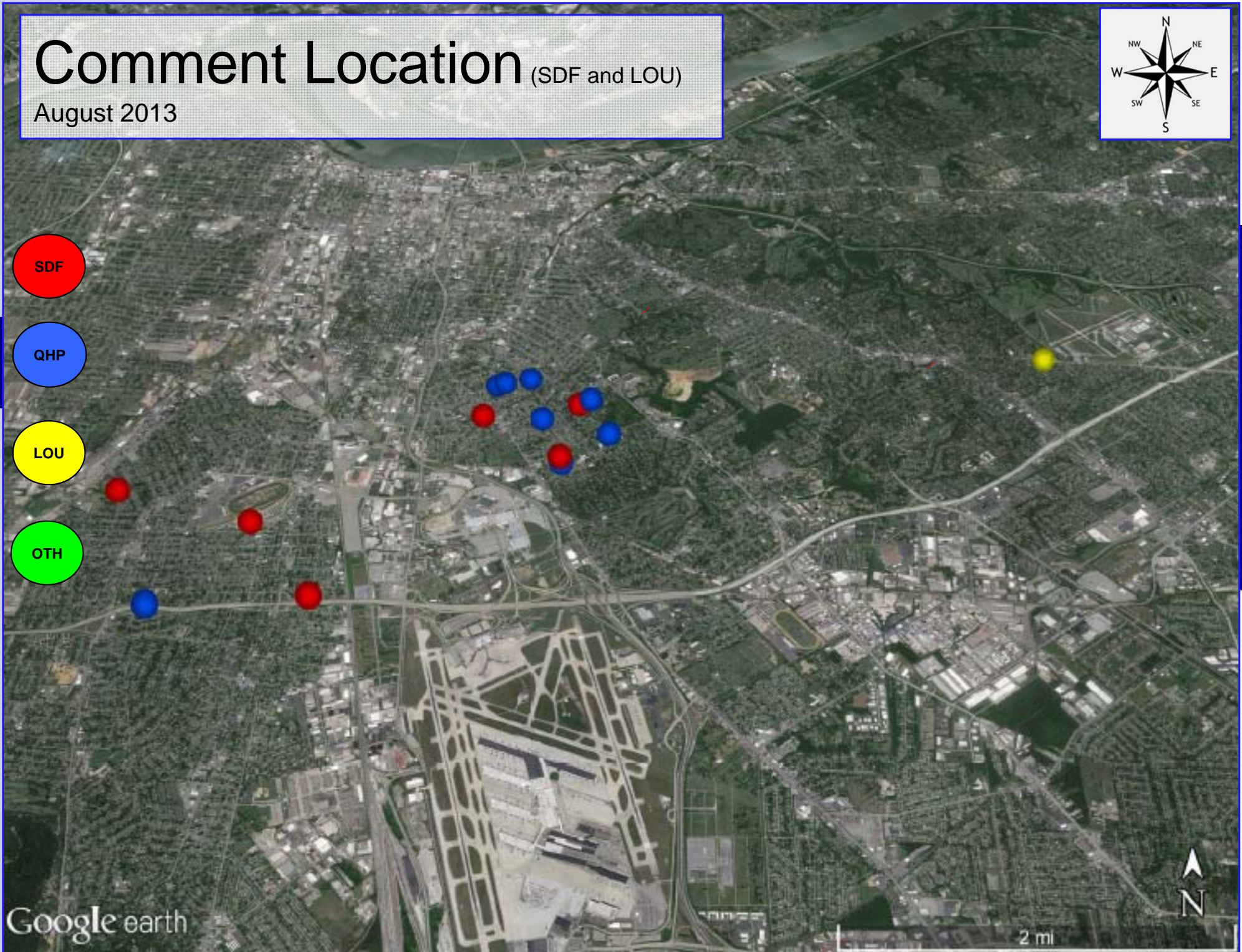
Street	Zip Code	Time Received	Time	Airport	Disturbance Type	CNF Quad	Status	Operation or Comment Type ¹	Deviation Type ²	Comments
Eastern PKY	40217	2013-08-29 14:12:19	2013-08-29 14:12:00	SDF	Other	NE	Investigated	Standard	None	I spoke with the people in the QHP office and they informed me that our home was not in the program boundary. I think the plane noise has been getting worse and that could become an issue for us in the future. Could you double check my address and see if we are in the program area?
							Received	LRAA	12	

1. **Standard:** Indicates the “Most Preferred” runway configuration was being utilized at the time of the comment.
Non Standard: Indicates that a “Lesser Preferred” runway configuration was being utilized at the time of the comment.
QHP: QuieterHome Program

2. This column is used to indicate the conditions which most likely necessitated a deviation from the standard procedures.

Comment Location (SDF and LOU)

August 2013

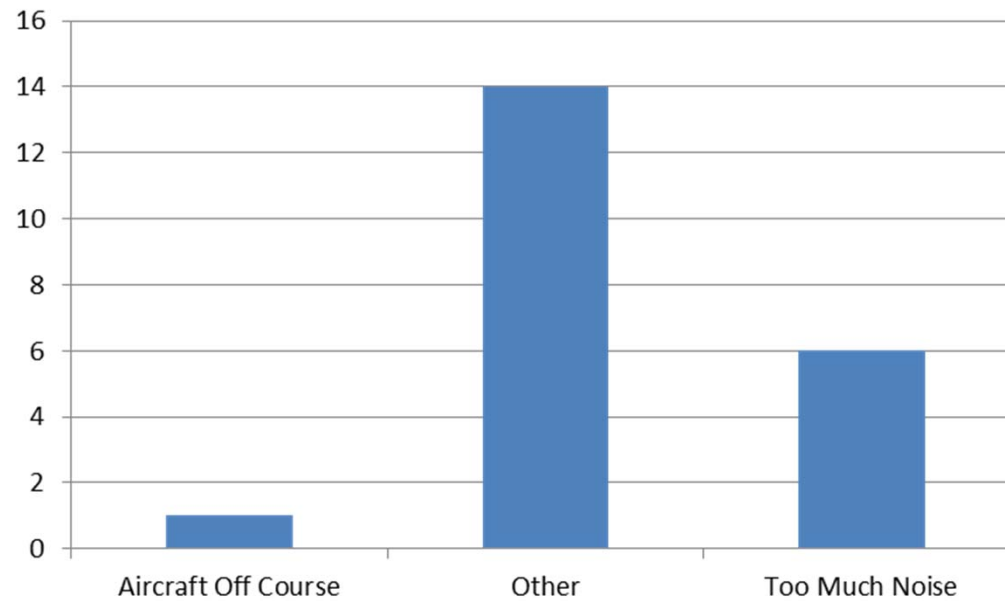


Google earth

2 mi

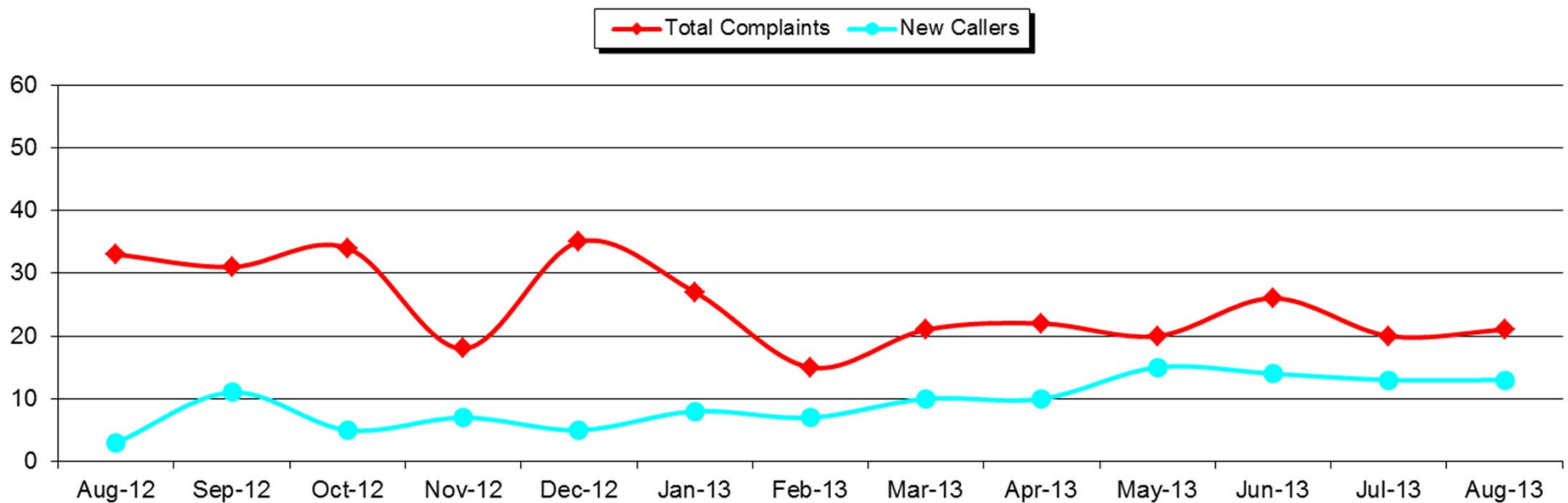
Comment Type* (SDF and LOU)

August 2013



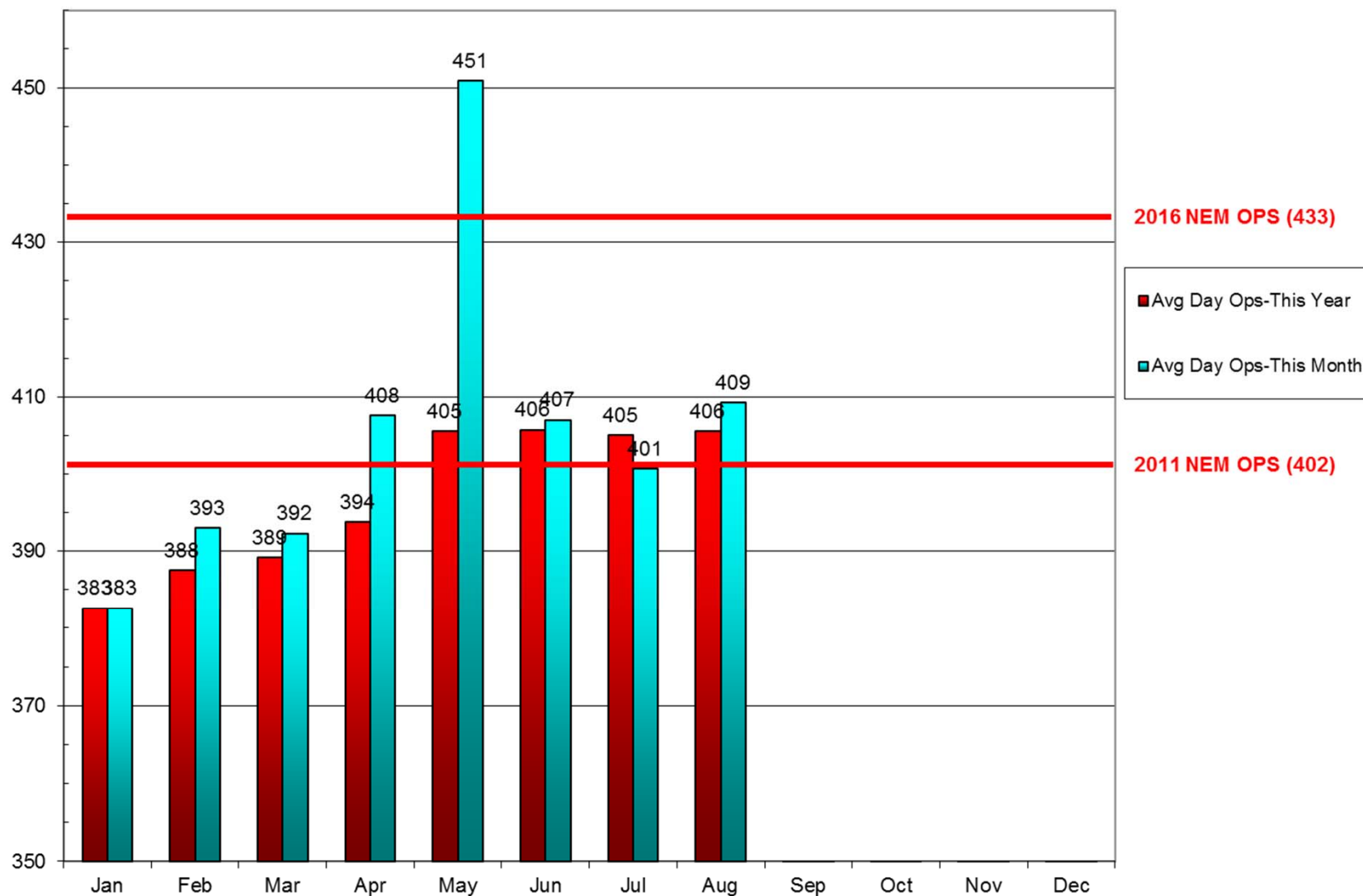
New Address/Comments per Month (SDF and LOU)

August 2013



Operations (SDF)

As of August 31, 2013



Daily Runway Use Uncorrected (SDF) July 2013

[illegible]

Daily Runway Use (SDF)

Tower Comments July 2013

Day	Date	Time	Comment
mon	1-Jul-13		
tue	2-Jul-13		
wed	3-Jul-13	0930-1230	Unscheduled painting TWY B & RWY 17R
wed	3-Jul-13	2200-2400	35L LOC OTS
thu	4-Jul-13	0000-0230	35L LOC OTS
thu	4-Jul-13	2200-2400	Wind 1606 wet runways
fri	5-Jul-13	0000-0230	Wind 1506 wet runways
fri	5-Jul-13	0930-1230	Weather in area & wind 2012 on short final
sat	6-Jul-13		
sun	7-Jul-13		
mon	8-Jul-13		
tue	9-Jul-13	2200-2400	R3704A & B active
wed	10-Jul-13	0000-0230	R3704A & B active
thu	11-Jul-13		
fri	12-Jul-13	0300-0900	Wind 0209 until 0500, couldn't change during outbound, valid reason not documented after 0600
sat	13-Jul-13	0800-1530	Wind 0410
sun	14-Jul-13		
mon	15-Jul-13		
tue	16-Jul-13		
wed	17-Jul-13		
thu	18-Jul-13	1830-2200	Weather on final
fri	19-Jul-13	0930-1230	Wind 2110
fri	19-Jul-13	0000-0230	Log shows north operation
sat	20-Jul-13		
sun	21-Jul-13		
mon	22-Jul-13	0730-0900	South until 0830, then weather on final
tue	23-Jul-13	0930-1030	Wind 2210
wed	24-Jul-13		
thu	25-Jul-13	1300-1930	Wind 0209
fri	26-Jul-13	0930-1230	Valid reason not documented.
sat	27-Jul-13	2000-2400	Wind 3310
sun	28-Jul-13	0300-0500	Wind 3210
mon	29-Jul-13		
tue	30-Jul-13		
wed	31-Jul-13		

Daily Runway Use Uncorrected (SDF) August 2013

Flow	Time	Thu 8/1	Fri 8/2	Sat 8/3	Sun 8/4	Mon 8/5	Tue 8/6	Wed 8/7	Thu 8/8	Fri 8/9	Sat 8/10	Sun 8/11	Mon 8/12	Tue 8/13	Wed 8/14	Thu 8/15	Fri 8/16	Sat 8/17	Sun 8/18	Mon 8/19	Tue 8/20	Wed 8/21	Thu 8/22	Fri 8/23	Sat 8/24	Sun 8/25	Mon 8/26	Tue 8/27	Wed 8/28	Thu 8/29	Fri 8/30	Sat 8/31	Time
North Flow	0:00																																0:00
	0:30																																0:30
	1:00																																1:00
	1:30																																1:30
	2:00																																2:00
	2:30																																2:30
South Flow	3:00																																3:00
	3:30																																3:30
	4:00																																4:00
	4:30																																4:30
	5:00																																5:00
	5:30																																5:30
	6:00																																6:00
	6:30																																6:30
	7:00																																7:00
	7:30																																7:30
8:00																																8:00	
8:30																																8:30	
9:00																																9:00	
North Flow	9:30																																9:30
	10:00																																10:00
	10:30																																10:30
	11:00																																11:00
	11:30																																11:30
	12:00																																12:00
12:30																																12:30	
South Flow	13:00																																13:00
	13:30																																13:30
	14:00																																14:00
	14:30																																14:30
	15:00																																15:00
	15:30																																15:30
	16:00																																16:00
	16:30																																16:30
	17:00																																17:00
	17:30																																17:30
	18:00																																18:00
	18:30																																18:30
	19:00																																19:00
	19:30																																19:30
20:00																																20:00	
20:30																																20:30	
21:00																																21:00	
21:30																																21:30	
North Flow	22:00																																22:00
	22:30																																22:30
	23:00																																23:00
	23:30																																23:30
Flow	Time	Thu 8/1	Fri 8/2	Sat 8/3	Sun 8/4	Mon 8/5	Tue 8/6	Wed 8/7	Thu 8/8	Fri 8/9	Sat 8/10	Sun 8/11	Mon 8/12	Tue 8/13	Wed 8/14	Thu 8/15	Fri 8/16	Sat 8/17	Sun 8/18	Mon 8/19	Tue 8/20	Wed 8/21	Thu 8/22	Fri 8/23	Sat 8/24	Sun 8/25	Mon 8/26	Tue 8/27	Wed 8/28	Thu 8/29	Fri 8/30	Sat 8/31	Time

Daily Runway Use (SDF)

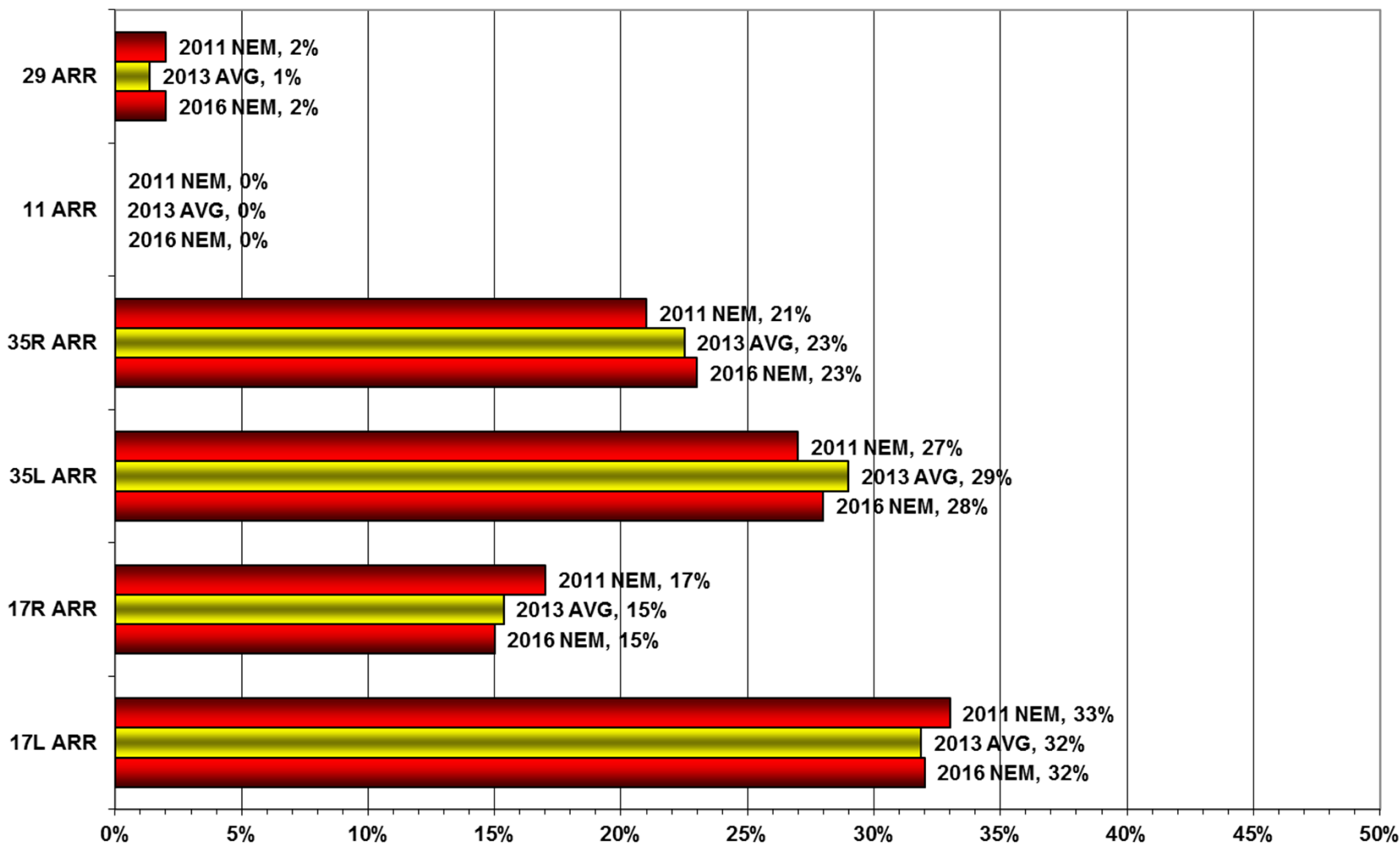
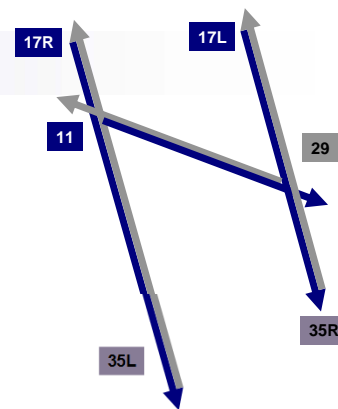
Tower Comments August 2013

Day	Date	Time	Comment
Thu	1-Aug-13	2200-0000	R3704B Restricted Area active
Fri	2-Aug-13	0000-0230	R3704B Restricted Area active
Sat	3-Aug-13	1600-1830	Wind 2811G20, wet runways
Sun	4-Aug-13	0000-0900	Wind 3610
Sun	4-Aug-13	1930-0000	Wind 0310
Mon	5-Aug-13	0930-1230	R3704B Restricted Area active
Mon	5-Aug-13	2200-0000	Wind 1610, also R3704B Restricted Area active
Tue	6-Aug-13	0000-0230	Wind 1610, also R3704B Restricted Area active
Tue	6-Aug-13	0930-1230	R3704 Restricted Area active
Tue	6-Aug-13	2200-0000	Wind 2107, also R3704B Restricted Area active
Wed	7-Aug-13	0000-0230	Wind 1907, also R3704B Restricted Area active
Thu	8-Aug-13	0930-1130	Wind 1909
Fri	9-Aug-13		
Sat	10-Aug-13	1800-2130	Wind 3308, wet runways
Sun	11-Aug-13		
Mon	12-Aug-13		
Tue	13-Aug-13		
Wed	14-Aug-13	0730-0900	Wind 0212G17
Thu	15-Aug-13		
Fri	16-Aug-13	2000-2130	Wind 0313
Sat	17-Aug-13		
Sun	18-Aug-13		
Mon	19-Aug-13		
Tue	20-Aug-13		
Wed	21-Aug-13	0930-1230	Convective WX south of airport.
Thu	22-Aug-13	1300-1830	Wind 3110
Fri	23-Aug-13		
Sat	24-Aug-13		
Sun	25-Aug-13		
Mon	26-Aug-13		
Tue	27-Aug-13		
Wed	28-Aug-13	1930-2130	Wind 3012
Thu	29-Aug-13		
Fri	30-Aug-13	1300-1530	Winds aloft, but direction/velocity unrecorded.
Sat	31-Aug-13		

Runway Use (SDF)

Arrivals As of August 31, 2013

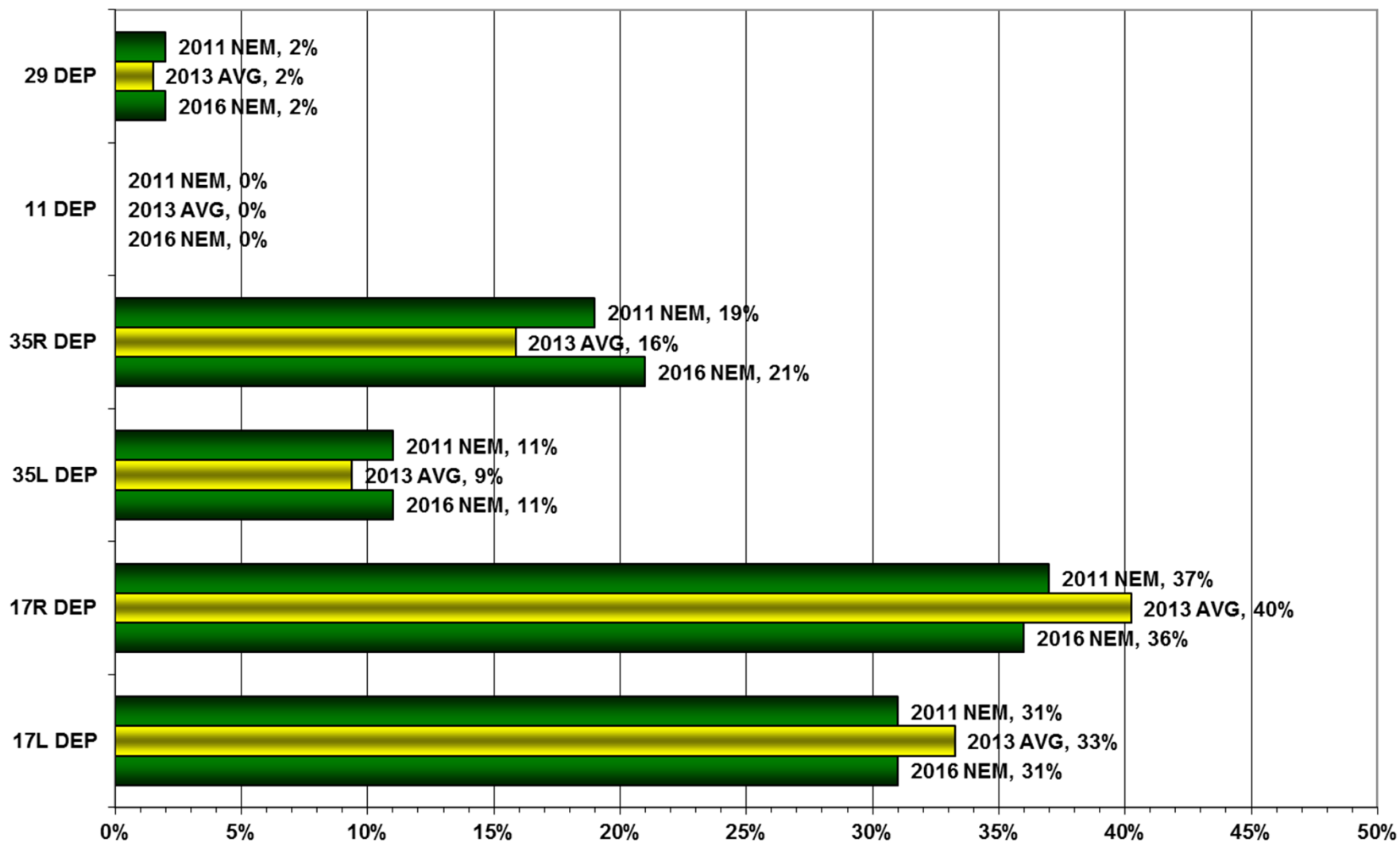
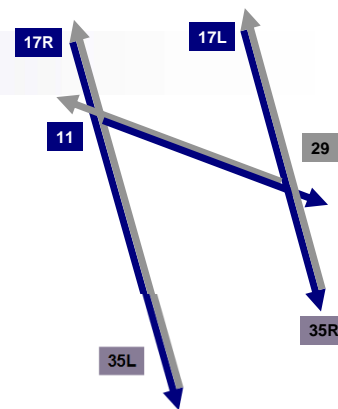
NEM vs. Actual

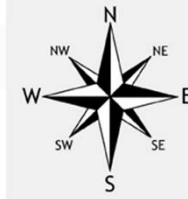


Runway Use (SDF)

Departures As of August 31, 2013

NEM vs. Actual



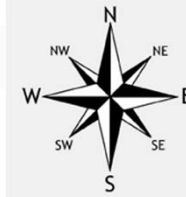


Runway Use 0930L-1230L(SDF)

As of August 2013

	Arrival Percentage by Runway							Arrival Count	Departure Percentage by Runway							Departure Count
	11	17L	17R	29	35L	35R	% From South		11	17L	17R	29	35L	35R	% To North	
Jul-11	0	25	13	0	38	24	62		0	23	13	0	18	46	64	
Aug-11	0	14	13	0	31	41	72		0	13	11	1	17	58	75	
Sep-11	0	16	23	0	33	28	61		0	15	22	1	7	55	62	
Oct-11	0	13	13	5	33	36	69		0	12	11	5	18	54	72	
Nov-11	0	32	21	0	25	22	47		0	35	18	0	4	43	47	
Dec-11	0	21	17	2	42	18	60		0	20	15	3	17	45	62	
Jan-12	0	27	24	9	29	11	40	653	1	33	17	14	14	21	35	306
Feb-12	0	9	18	8	35	30	65	662	0	11	16	10	10	53	63	345
Mar-12	0	30	38	0	15	17	32	684	0	29	36	2	0	33	33	404
Apr-12	0	15	10	1	43	31	74	589	0	13	10	5	17	55	72	336
May-12	0	27	22	0	29	21	50	745	0	25	25	0	15	34	49	449
Jun-12	0	11	16	4	46	26	72	652	0	12	14	4	19	52	71	427
Jul-12	0	6	32	0	49	13	62	619	0	8	27	3	45	17	62	384
Aug-12	0	26	23	0	34	17	51	717	0	24	26	1	21	28	49	437
Sep-12	0	29	10	0	21	40	61	655	0	33	10	1	13	43	56	353
Oct-12	1	20	26	3	20	31	51	740	2	24	19	3	9	43	52	475
Nov-12	0	10	4	3	50	33	83	762	0	7	4	3	9		9	
Dec-12	0	18	12	5	41	24	65	779	0	17	9	3	8	63	71	412
Jan-13	0	16	12	0	42	30	72	742	0	17	16	2	14	52	66	436
Feb-13	0	21	11	9	39	2	41	628	0	21	16	7	12	44	56	354
Mar-13	0	10	6	0	51	33	84	728	0	10	8	3	14	65	79	441
Apr-13	0	24	27	2	27	20	47	719	0	26	23	3	8	40	48	441
May-13	0	33	33	0	20	14	34	785	0	33	31	1	10	25	35	410
Jun-13	0	10	13	0	43	31	74	717	0	8	13	0	22	57	79	534
Jul-13	0	23	10	0	42	25	67	694	0	24	12	0	20	44	64	465
Aug-13	0	22	10	0	43	25	68	725	0	18	13	0	13	56	69	483
Monthly Avg.	0	20	18	2	35	25	60		0	20	17	3	14	45	59	

Source: Louisville International Airport
Aircraft Flight Tracking and Noise Management System (AFTNMS)



Gate Compliance by Runway

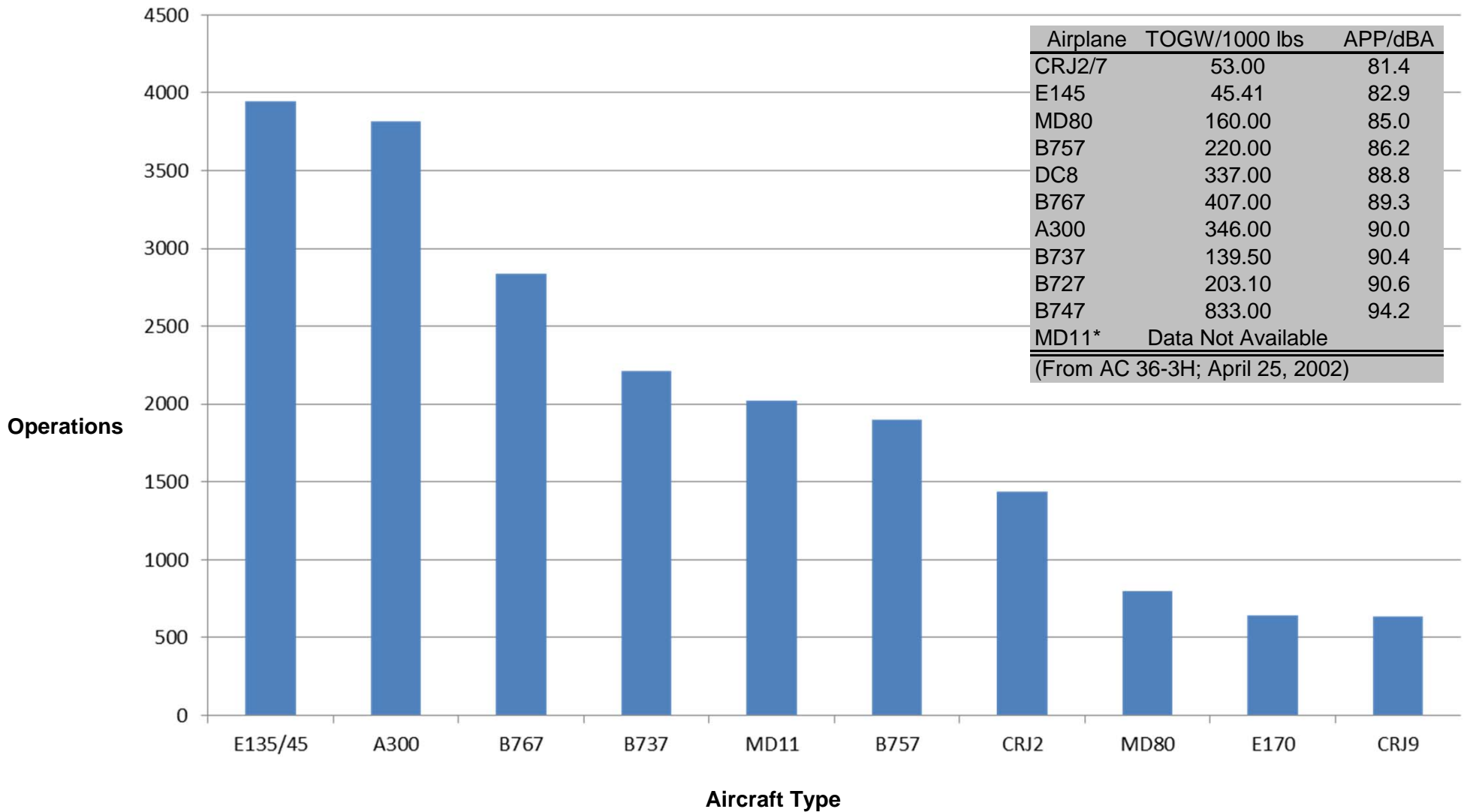
As of August 31, 2013

	ARRIVALS Percent Compliant					Departure Percent Compliant				
Month	17L	17R	35L	35R	ARR AVG	17L	17R	35L	35R	DEP AVG
Sep-11	76%	84%	66%	81%	77%	66%	75%	72%	79%	73%
Oct-11	67%	84%	76%	78%	76%	64%	76%	82%	80%	76%
Nov-11	80%	90%	82%	89%	85%	49%	67%	76%	79%	68%
Dec-11	77%	94%	86%	87%	86%	51%	70%	79%	84%	71%
Jan-12	78%	87%	83%	88%	84%	44%	68%	72%	76%	65%
Feb-12	73%	91%	78%	77%	80%	50%	68%	74%	79%	68%
Mar-12	76%	88%	76%	81%	80%	48%	68%	67%	80%	66%
Apr-12	65%	80%	72%	73%	73%	63%	72%	79%	85%	75%
May-12	71%	86%	75%	77%	77%	67%	80%	78%	87%	78%
Jun-12	61%	81%	71%	73%	72%	63%	75%	78%	90%	77%
Jul-12	66%	83%	70%	76%	74%	62%	72%	77%	89%	75%
Aug-12	68%	85%	75%	77%	76%	63%	71%	83%	90%	77%
Sep-12	79%	93%	81%	78%	83%	53%	72%	72%	88%	71%
Oct-12	80%	92%	85%	82%	85%	70%	59%	70%	89%	72%
Nov-12	73%	73%	82%	85%	78%	84%	82%	84%	92%	86%
Dec-12	84%	93%	89%	91%	89%	74%	85%	72%	79%	78%
Jan-13	82%	93%	82%	83%	85%	73%	86%	81%	87%	82%
Feb-13	78%	93%	85%	84%	85%	73%	85%	76%	78%	78%
Mar-13	73%	86%	88%	86%	83%	82%	89%	82%	86%	85%
Apr-13	75%	90%	77%	78%	80%	73%	89%	80%	81%	81%
May-13	81%	87%	78%	77%	81%	70%	84%	76%	92%	81%
Jun-13	73%	84%	76%	82%	79%	76%	88%	74%	86%	81%
Jul-13	82%	87%	81%	82%	83%	81%	84%	76%	91%	83%
Aug-13	78%	89%	79%	81%	82%	78%	83%	78%	92%	83%
24 Month Avg.					81%					76%

Source: Louisville International Airport
Aircraft Flight Tracking and Noise Management System (AFTNMS)

Operations by Aircraft Type (SDF) Only Top 10 Aircraft Types Shown

July/August 2013



Source: Louisville International Airport

Aircraft Flight Tracking and Noise Management System (AFTNMS)