

**Community Noise Forum**  
**Monday, September 29, 2014**  
**Agenda**

- I. Call to order: 6:00PM
- II. Minutes of July 28, 2014
- III. Part 150 NCP
  - A. Update: Noise Insulation Program
  - B. Contraflow Exceptions
- IV. Current Noise Concerns
  - A. Noise Concerns/Complaints
  - B. Runway Utilization
  - C. Construction and Maintenance Activity
- V. FlyQuiet Award
- VI. Announcements
- VII. Guest Comments
- VIII.. Next Meeting and Holiday Party: Monday, November 24, 2014
- IX. Adjournment:

**COMMUNITY NOISE FORUM (CNF)**  
**Monday, July 28, 2014**

**Members**

John Sistarenik, ANA  
Pete Levermore, Airline Affairs  
Mary Rose Evans, LRAA Board  
Brian Sinnwell, LRAA  
Bob Slattery, LRAA

Denny Thompson, Southeast  
Mike Zanone, Northwest  
John Greathouse, Southwest (Alt)  
Verna Goately, Metro  
Pat Gould, Northeast

**Guests**

Shane Smith, SACC

The meeting was called to order at 6:00 p.m. by John Sistarenik. The CNF operated as a committee of the whole in June therefore the March meeting minutes were reviewed and accepted by Pete Levermore and seconded by Mike Zanone at the July meeting. The June meeting minutes were reviewed and accepted by Pat Gould and seconded by Pete Levermore.

**Part 150 NCP:**

**A. Updates:**

**Phase 1, 2, 3A, 3A-1:** Sound insulation is complete. To date 179 of 688 families have received sound insulation.

**Phase 4A:** Sound insulation for 50 families was awarded at the November board meeting. Construction is underway.

**Phase 5:** A contract to provide Sound Insulation for 85 families was awarded at the January board meeting. Measurement walk-throughs were completed in May. Construction will begin later this summer.

**Phase 4B:** Sound insulation for 71 families was awarded at the February board meeting. Measurement walk-throughs are complete. Construction begins in the fall.

**Phase 6:** Sound Insulation for 60 families. The project was advertised on March 9<sup>th</sup>. Phase 6 was awarded at the April Board meeting. Construction should begin by the end of the year.

**Phase 7:** Sound Insulation for 66 families. The project advertised on May 4<sup>th</sup>. Contract was awarded at the June board meeting.

**Phase 3B:** Awaiting easement resolution.

- B. Contraflow Exceptions:** Contraflow for May was, 60% for arrivals from the south and 92% for departures to the south. In June, arrivals from the south were 75% and departures to the south were 86%. For CY-2014 the arrivals are averaging 64% and the departures are averaging 82%. A daily summary for May and June 2014 is contained in the handout. A monthly summary going back 8 years is also included in the handout.

**Current Noise Concerns:**

- A. Report on Noise Concerns/Complaints:** We received a total of 22 comments in May. The QHP project office received 13 comments and 9 comments were received by the LRAA. In June we received a total of 15 comments, 9 were received at the QHP project office and 6 were received by the LRAA.
- B. Runway Utilization:** Runway utilization percentages for May and June are contained in the handout. Daily runway utilization and comments from the Air Traffic Control Tower for May and June are also included in the handout.
- C. Construction and Maintenance Activity:** Construction for taxiway "A" Bid Package 5 is underway and on track to be completed by November 1<sup>st</sup>. This project will have impacts on operations for the west runway and the crosswind runway. The 2014 Pavement Rehab project began in August and will be finished in the latter part of October. The Pavement Rehab project mostly impacts the west runway but there will be some asphalt shoulder work that will impact the east runway. Closures of the runways will occur during off-peak times.

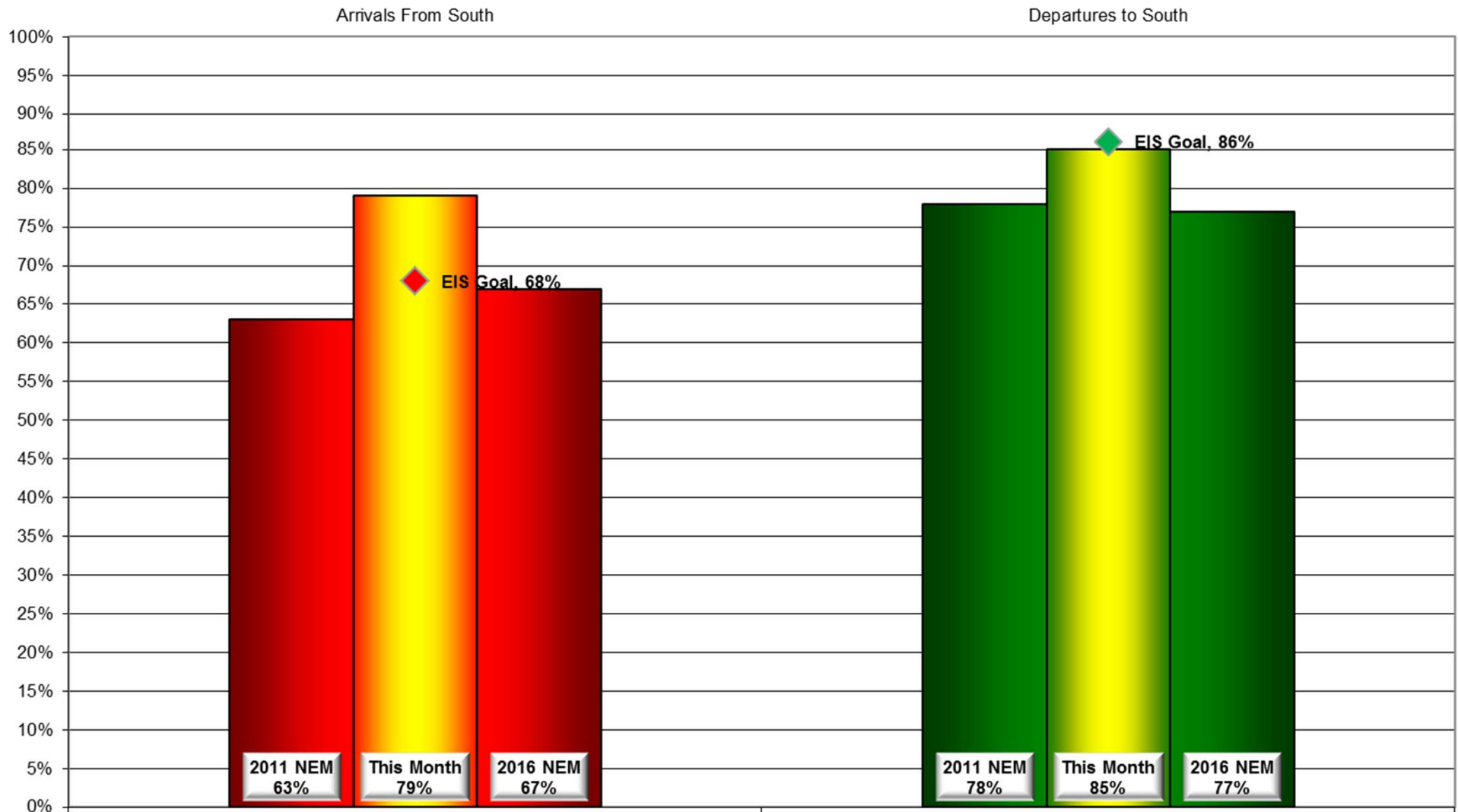
**Announcements:** John Sistarenik suggested the group think about nominating someone for the Fly Quiet Award which will be awarded at the November Holiday meeting.

**Guest Comments:** Shane Smith asked the status on Phase 3B regarding easements. Bob told Shane that the program has easements and the City of Audubon Park is not allowing the LRAA to obtain easements. Until Audubon Park allows for the easements, Phase 3B is on hold.

**Next Meeting:** Monday, September 29, 2014 at 6 p.m.

**Adjournment:** A motion was made to adjourn the meeting at 6:35 PM by Verna Goately. The motion was seconded by John Greathouse.

## Monthly Contraflow July 1-31, 2014



# Daily Runway Use Summary- July 2014

(from 10:00 PM date list in first column to 7:00 AM the following morning)

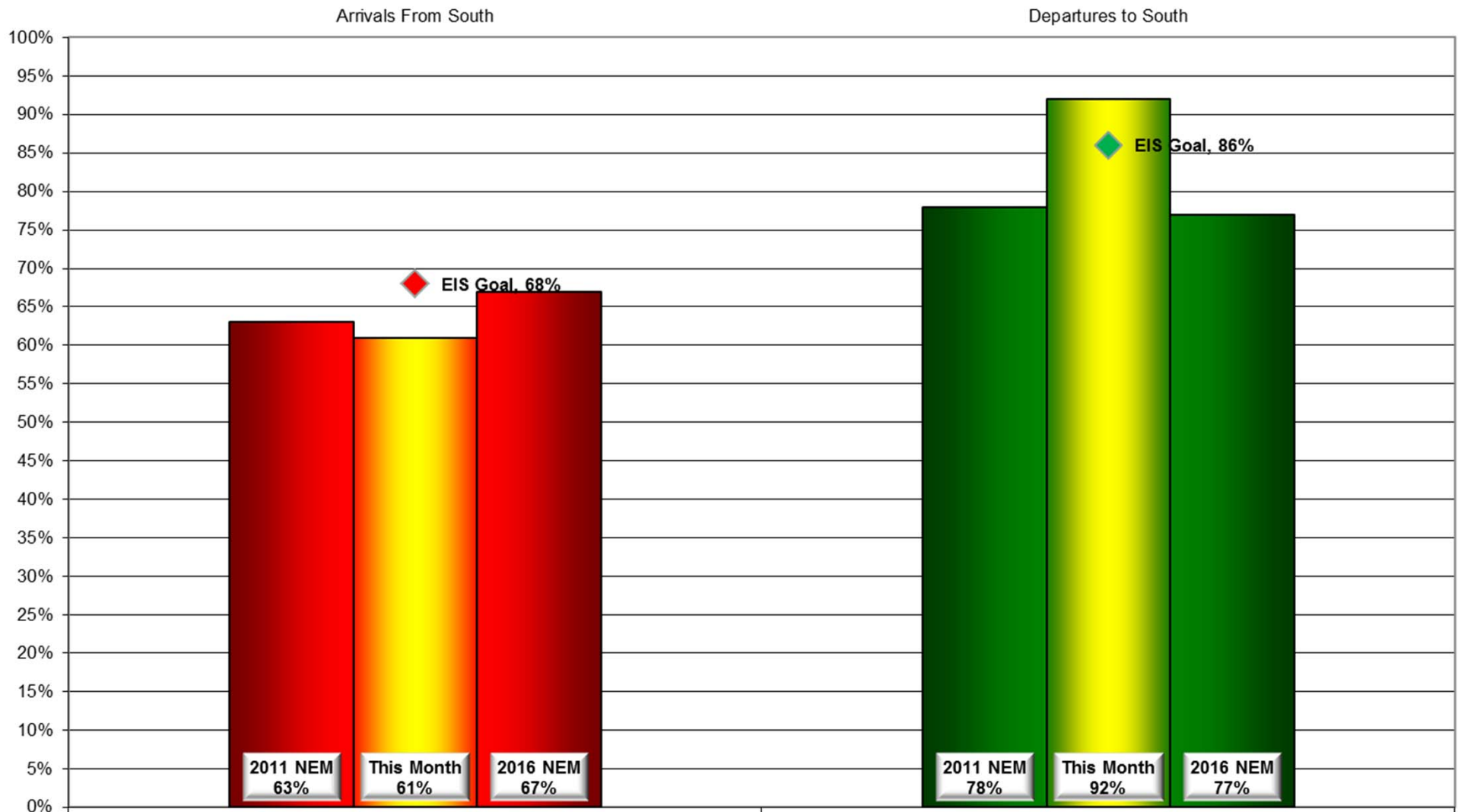
		% of all arrivals from the south										% of all departures to the south																																																																																																																																																																																																																																																																																																																																																																																																																																																																																																																																																																																																																																																																																																																																																																																																																																																																																																																																																																																																																																																																																																																																																																																																																																																																																																																															
Date	Day	* in	Runway #							Unknown	Notes /		** in	Runway #							Unknown	Notes /																																																																																																																																																																																																																																																																																																																																																																																																																																																																																																																																																																																																																																																																																																																																																																																																																																																																																																																																																																																																																																																																																																																																																																																																																																																																																																																					
		compliance	11	17L	17R	29	35L	35R	Runway	Use				compliance	11	17L	17R	29	35L	35R	Runway			Use																																																																																																																																																																																																																																																																																																																																																																																																																																																																																																																																																																																																																																																																																																																																																																																																																																																																																																																																																																																																																																																																																																																																																																																																																																																																																																																			
											Comments																																																																																																																																																																																																																																																																																																																																																																																																																																																																																																																																																																																																																																																																																																																																																																																																																																																																																																																																																																																																																																																																																																																																																																																																																																																																																																																																

Preferred Flow

DATIS Reported Conditions Indicate  
Support for Non-Preferred Flow

DATIS Reported Conditions Do Not Indicate  
Support for Non-Preferred Flow

## Monthly Contraflow August 1-29, 2014



# Daily Runway Use Summary- August 2014

(from 10:00 PM date list in first column to 7:00 AM the following morning)

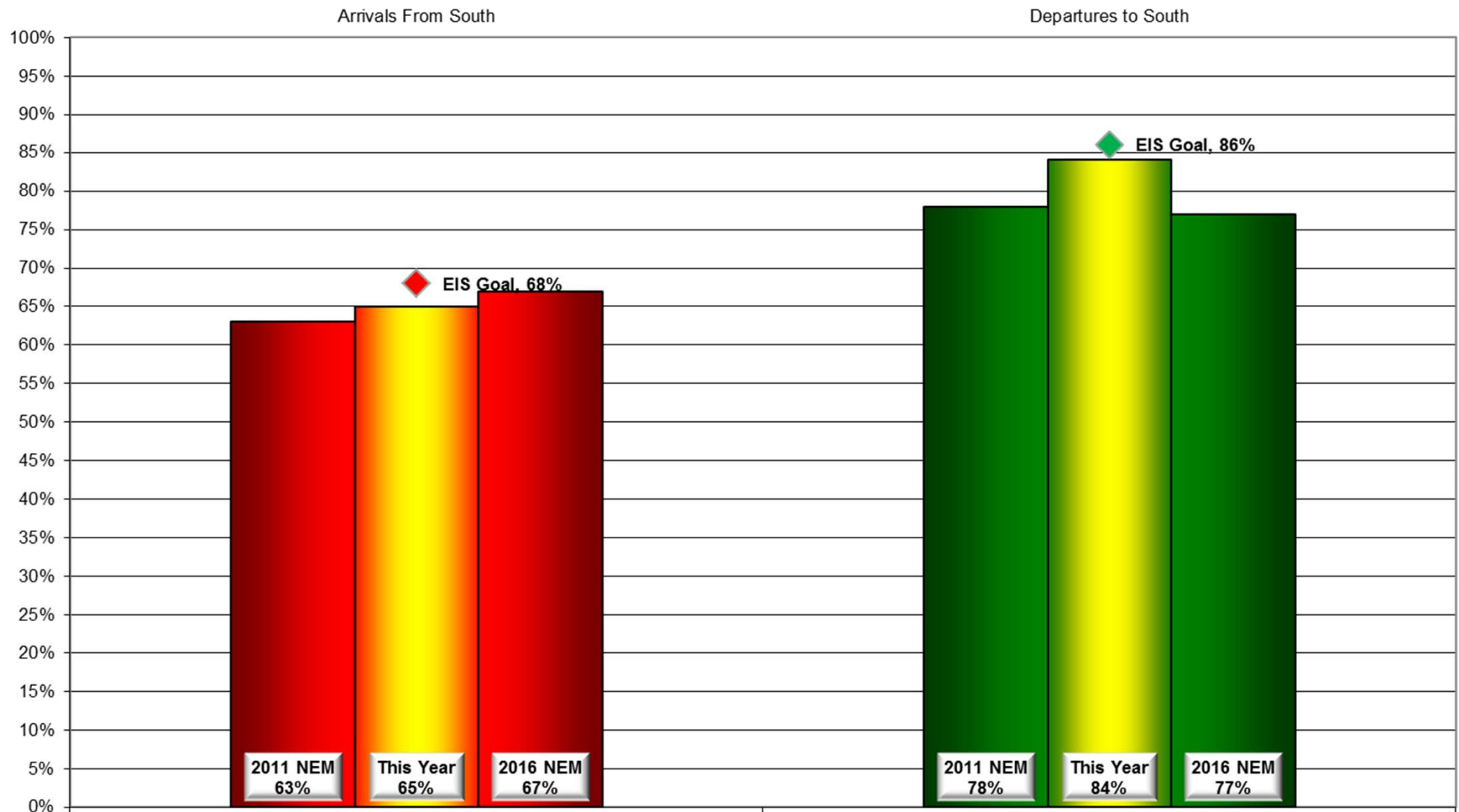
		% of all arrivals from the south										% of all departures to the south									
Date	Day	* in compliance	Runway #						Unknown Runway	Use	Notes / Comments	** in compliance	Runway #						Unknown Runway	Use	Notes / Comments
			11	17L	17R	29	35L	35R					11	17L	17R	29	35L	35R			
08/01/14	Fri	95%			3	2		58	37	0		97%			44	53		2	1	0	
08/02/14	Sat																				
08/03/14	Sun																				
08/04/14	Mon	0%			39	61				0	r3704 active	100%			45	55				0	
08/05/14	Tue	0%			47	53				0	r3704 active	100%			40	60				0	
08/06/14	Wed	1%			46	53		1		0	r3704 active	100%			44	56				0	
08/07/14	Thu	0%			52	48				0	r3704 active	100%			42	58				0	
08/08/14	Fri	0%			48	52				0	r3704 active	100%			38	62				0	
08/09/14	Sat																				
08/10/14	Sun																				
08/11/14	Mon	0%			48	52				0	r3704 active	100%			38	62				0	
08/12/14	Tue	98%			2			55	43	0		92%			37	55		4	4	0	
08/13/14	Wed	94%			5	1		56	38	0		93%			39	54		4	3	0	
08/14/14	Thu	99%			1			52	47	0		13%			5	8		47	40	0	350-360@6-8knts
08/15/14	Fri	93%			3	4		59	34	0		96%			41	55		3	1	0	
08/16/14	Sat																				
08/17/14	Sun																				
08/18/14	Mon	94%			5	1		55	39	0		97%			37	60		3		0	
08/19/14	Tue	0%			46	54				0	150-220@6-11knts	100%			37	63				0	
08/20/14	Wed	93%			6	1		58	35	0		90%			40	50		4	6	0	
08/21/14	Thu	65%			19	16		43	22	0	150-230@5knts	98%			39	59		1	1	0	
08/22/14	Fri	84%			12	4		51	33	0		97%			32	65		1	2	0	
08/23/14	Sat																				
08/24/14	Sun																				
08/25/14	Mon	95%			4	1		57	38	0		91%			35	56		5	4	0	
08/26/14	Tue	97%			2	1		58	39	0		93%			40	53		3	4	0	
08/27/14	Wed	93%			6	1		58	35	0		93%			38	55		5	2	0	
08/28/14	Thu	92%			6	2		56	36	0		95%			38	57		3	2	0	
08/29/14	Fri	85%			10	5		52	33	0		97%			38	59		3		0	

Preferred Flow

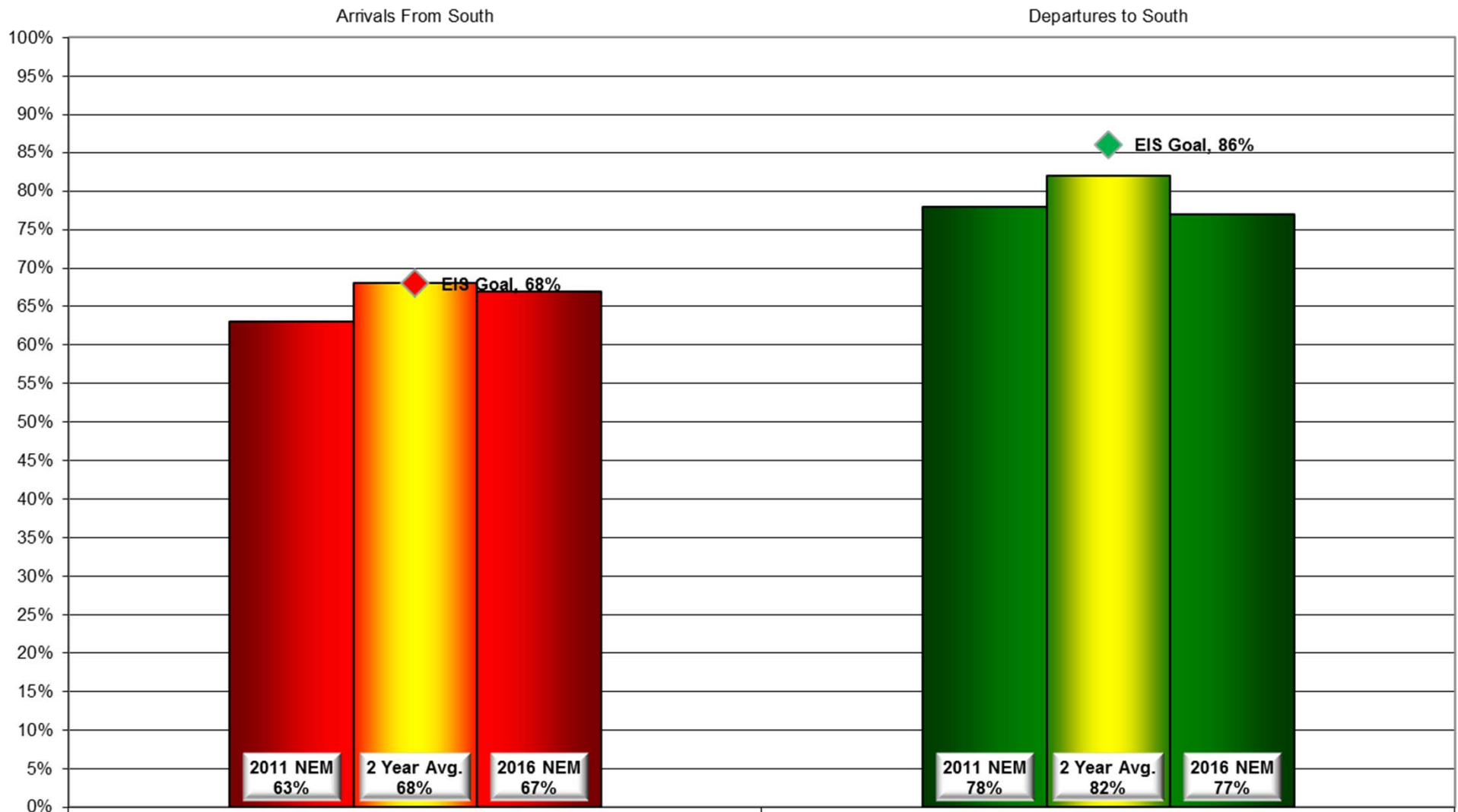
DATIS Reported Conditions Indicate  
Support for Non-Preferred Flow

DATIS Reported Conditions Do Not Indicate  
Support for Non-Preferred Flow

## Contraflow This Year As of August 29, 2014



## Contraflow 2 Year Average September 2012 - August 2014



# Year-to-Year by Month Percent\* Contraflow

Arrivals From the South (Goal 68%)										Departures to the South (Goal 86%)									
	2007	2008	2009	2010	2011	2012	2013	2014	Avg		2007	2008	2009	2010	2011	2012	2013	2014	Avg
Jan	39%	50%	63%	94%	91%	62%	72%	51%	65%	Jan	80%	80%	74%	54%	71%	80%	65%	81%	73%
Feb	77%	50%	49%	90%	73%	69%	77%	72%	70%	Feb	76%	74%	81%	71%	63%	74%	78%	71%	74%
Mar	52%	52%	46%	80%	52%	61%	87%	60%	61%	Mar	78%	68%	67%	82%	72%	96%	77%	77%	77%
Apr	61%	44%	53%	57%	47%	78%	60%	67%	58%	Apr	67%	92%	84%	84%	83%	76%	89%	83%	82%
May	71%	66%	66%	56%	69%	72%	46%	60%	63%	May	84%	78%	84%	87%	85%	81%	85%	92%	85%
Jun	64%	38%	72%	66%	61%	79%	76%	75%	66%	Jun	85%	93%	81%	96%	93%	87%	80%	91%	88%
Jul	84%	75%	72%	61%	91%	62%	74%	79%	75%	Jul	85%	84%	82%	90%	88%	92%	88%	85%	87%
Aug	69%	92%	61%	59%	82%	49%	84%	61%	70%	Aug	87%	77%	96%	92%	91%	91%	92%	92%	90%
Sep	79%	91%	89%	70%	85%	55%	86%		79%	Sep	89%	73%	82%	73%	64%	92%	87%		80%
Oct	54%	76%	42%	80%	88%	62%	87%		70%	Oct	68%	77%	71%	78%	63%	78%	89%		75%
Nov	58%	66%	74%	85%	55%	84%	73%		71%	Nov	77%	74%	73%	77%	72%	81%	83%		77%
Dec	53%	58%	71%	67%	70%	64%	58%		63%	Dec	74%	62%	65%	78%	65%	67%	71%		69%
Avg	63%	63%	63%	72%	72%	66%	73%	66%		Avg	79%	78%	78%	80%	76%	83%	82%	84%	

\*Number is percentage of all operations between 10:00 PM - 7:00 AM



***LOUISVILLE  
REGIONAL  
AIRPORT  
AUTHORITY®***

---

**NOISE COMMENT REPORT**  
**July 2014**

# Comments (SDF/LOU)

## July 2014

Street	Zip Code	Time Received	Time	Airport	Disturbance Type	CNF Quad	Status	Operation or Comment Type <sup>1</sup>	Deviation Type <sup>2</sup>	Comments
Hess Lane	40217	2014-07-01 09:21:15	2014-07-01 09:21:15	SDF	Other	NE	Investigated	LQHP	None	Homeowner was told about our program and wanted to know if his home was in.
Clarks LN	40217	2014-07-15 09:21:15	2014-07-15 09:27:15	SDF	Other	NE	Investigated	LQHP	None	Homeowner called and said that her sister bought a home that was eligible and wanted to know if hers was.
Greenleaf RD	40213	2014-07-16 09:27:15	2014-07-16 09:27:15	SDF	Other	NE	Investigated	LQHP	None	I live in the Audubon Park area! We purchased our home without knowing just how loud these planes are all day and all night! I did some research and came across this site! According to the outline I am within phase three but I am not sure! What does it include if I am in the zone? How do I qualify? Do you have someone monitor the noise at our house?
Delor AV	40217	2014-07-21 09:27:15	2014-07-21 09:27:15	SDF	Other	NE	Investigated	LQHP	None	I was referred to your website by a friend that owns a home in Germantown. My home on Delor Avenue is on the final approach to SDF and we hear planes at all hours of the night. My spouse and I have gotten accustomed to the noise but on occasion our two children under 3 years old have restless nights from the noise. I would like to inquire about our eligibility for a study to be done to see if there is anything we can do to lessen the amount of noise from the incoming/outgoing aircrafts. Thanks in advance for your time and any information you could provide me.

1. **Standard:** Indicates the “Most Preferred” runway configuration was being utilized at the time of the comment.  
**Non Standard:** Indicates that a “Lesser Preferred” runway configuration was being utilized at the time of the comment.  
**QHP:** QuieterHome Program

2. This column is used to indicate the conditions which most likely necessitated a deviation from the standard procedures.

# Comments (SDF/LOU)

## July 2014

Street	Zip Code	Time Received	Time	Airport	Disturbance Type	CNF Quad	Status	Operation or Comment Type <sup>1</sup>	Deviation Type <sup>2</sup>	Comments
Harrison AV	40217	2014-07-25 09:27:15	2014-07-25 09:27:15	SDF	Other	NE	Investigated	LQHP	None	I was told about the program from a friend. I wanted to see what to do next.
Lucas CT	40213	2014-07-28 09:27:15	2014-07-28 09:27:15	SDF	Other	NE	Investigated	LQHP	None	Hey. My address is on Lucas Court. Planes fly over our house constantly. The windows shake and rattle every time. Are we eligible for new windows through the airport program?
Lucas CT	40213	2014-07-28 10:05:25	2014-07-28 10:05:25	SDF	Other	NE	Investigated	LQHP	None	Well the daytime noise should count just as much. I work from home and am constantly having to pause a conversation because of the noise of the planes. I understand that this isn't your fault but this program was supposed to help those that need new windows due to noise pollution and I need new windows but of course don't qualify. That's pretty typical for the government.
Fetter AV	40217	2014-07-28 10:15:25	2014-07-28 10:15:25	SDF	Other	NE	Investigated	LQHP	None	We are within two-three houses of the phase 4-7 map on Fetter Avenue. We are just east of Alexander. I'm not understanding how the homes (mine included) that are directly under the aircrafts flight pattern are not within the area but the homes that are, are west of the flight pattern?
Eastern PKY	40217	2014-07-29 10:15:25	2014-07-29 10:15:25	SDF	Other	NE	Investigated	LQHP	None	How can I determine if my home is eligible for this program? My address is on Eastern Parkway, 40217. I hope that I am eligible! I watch and listen to the planes fly over all the time.

1. **Standard:** Indicates the "Most Preferred" runway configuration was being utilized at the time of the comment.  
**Non Standard:** Indicates that a "Lesser Preferred" runway configuration was being utilized at the time of the comment.  
**QHP:** QuieterHome Program

2. This column is used to indicate the conditions which most likely necessitated a deviation from the standard procedures.

# Comments (SDF/LOU)

## July 2014

Street	Zip Code	Time Received	Time	Airport	Disturbance Type	CNF Quad	Status	Operation or Comment Type <sup>1</sup>	Deviation Type <sup>2</sup>	Comments
Farmdale AV	40213	2014-07-30 10:15:25	2014-07-30 10:15:25	SDF	Other	NE	Investigated	LQHP	None	Homeowner came into inquire about eligibility.
							Received	LQHP	10	
Fetter AV	40217	2014-07-06 11:08:32	2014-07-06 01:00:00	SDF	Too Much Noise	NE	Investigated	Standard	None	At 1:30 AM on July 6, 2014 a loud plane flew over Schnitzelburg.
Packard AV	40217	2014-07-09 11:12:43	2014-07-09 08:00:00	SDF	Other	NE	Investigated	Standard	None	I do not understand how you can do the houses down towards Preston but not my home when most of the planes go over my house. I have lived here 18 years and it has noticeably gotten worse.
Manchester	40205	2014-07-11 09:30:43	2014-07-10 08:00:00	LOU	Constant Noise	NE	Investigated	Standard	None	From about 8:00 AM until 1:00 PM yesterday it seemed like there was non-stop traffic at Bowman Field. It seems to me like there is a lot more traffic over my home than there has been in the past.
Denham RD	40205	2014-07-14 13:00:02	2014-07-14 13:00:00	LOU	Aircraft Too Low	NE	Investigated	Non-Standard	Ops	Right now (last 3 months or so) the planes have been cutting the corner and coming over my house way too low. I can read the numbers on them. I have pilot friends who say that they are too low. I just need you to get the word out. Call me back and let me know you got the word out.
Parkway DR	40217	2014-07-15 19:49:47	2014-07-15 19:00:00	SDF	Over Use of Runway	NE	Investigated	Non-Standard	Weather	Could you give us a break, those damn planes use to not take off over my home and now they do. When I moved here in the 70's we didn't have to listen to this noise. I live on Parkway Dr. You all have done nothing for our area. I don't want a hand out, stop flying over my home.

1. **Standard:** Indicates the “Most Preferred” runway configuration was being utilized at the time of the comment.  
**Non Standard:** Indicates that a “Lesser Preferred” runway configuration was being utilized at the time of the comment.  
**QHP:** QuieterHome Program

2. This column is used to indicate the conditions which most likely necessitated a deviation from the standard procedures.

# Comments (SDF/LOU)

## July 2014

Street	Zip Code	Time Received	Time	Airport	Disturbance Type	CNF Quad	Status	Operation or Comment Type <sup>1</sup>	Deviation Type <sup>2</sup>	Comments
Holly Hills DR	40118	2014-07-22 14:12:43	2014-07-22 03:30:00	SDF	Too Much Noise	SW	Investigated	Standard	None	A few minutes after 4 this morning the noise was really bad and it was one plane right after the other. I have spoken with you several times in the past.
Audubon PKY	40213	2014-07-28 07:35:03	2014-07-26 19:00:00	SDF	Over Use of Runway	NE	Investigated	Non-Standard	None	A pretty scary weekend, between Saturday's storms, and Sunday's stiff west wind snapping some weakened limbs. Scariest of all, with varying but generally little main runway wind component in either direction, but velocity well in excess of the published crosswind threshold – the crosswind runway remained closed all day! Worse still, with that being the case, it would seem especially important to focus on safety of the surrounding population, directing traffic in the depopulated, preferred south direction. Instead, improper north flow dominated the day, which meant aircraft operating outside safety margins were being blown eastward over the most densely populated neighborhoods throughout the period. Beyond the noise impact, this is, by the usual air traffic control accounting, dangerous and irresponsible. This morning, Monday, wind has abated to well below any applicable threshold – yet improper north flow continues, providing an unwelcome wake-up call to the same neighborhoods, and a persistent reminder of yesterday's danger. Can't something be done?
Delor AV	40217	2014-07-28 11:15:14	2014-07-28 11:00:00	SDF	Too Much Noise	NE	Investigated	Standard	Weather	I have called you several times in the past but never before regarding a specific airplane. At 11:05 AM an aircraft flew over and it was the loudest that I have ever heard. It was loud because it was so low.

1. **Standard:** Indicates the "Most Preferred" runway configuration was being utilized at the time of the comment.  
**Non Standard:** Indicates that a "Lesser Preferred" runway configuration was being utilized at the time of the comment.  
**QHP:** QuieterHome Program

2. This column is used to indicate the conditions which most likely necessitated a deviation from the standard procedures.

# Comments (SDF/LOU)

## July 2014

Street	Zip Code	Time Received	Time	Airport	Disturbance Type	CNF Quad	Status	Operation or Comment Type <sup>1</sup>	Deviation Type <sup>2</sup>	Comments
Maplewood DR	47129	2014-07-29 15:52:07	2014-07-29 15:00:00	SDF	Too Much Noise	SI	Investigated	Non-Standard	None	I have called before. This seems to have been pretty good but it seems to have started back up again. Here recently it seems to have gotten crazy again. I hope it is not going to stay like this.
S. 2nd ST	40214	2014-07-29 16:06:07	2014-07-29 15:30:00	SDF	Over Use of Runway	SW	Investigated	Non-Standard	None	UPS planes are going over my house and there is no reason why. Give me a call.
S. 2nd ST	40214	2014-07-29 16:19:07	2014-07-29 15:45:00	SDF	Over Use of Runway	SW	Investigated	Non-Standard	None	They are still going over and I wanted to make sure you documented this call.
S. 2nd ST	40214	2014-07-29 16:43:07	2014-07-29 16:00:00	SDF	Too Much Noise	SW	Investigated	Non-Standard	Weather	It is Doris again 3rd time 4:43 PM. I still have UPS flying over my house. Yes, it is ridiculous give me a call.
							Received	LRAA	12	

1. **Standard:** Indicates the “Most Preferred” runway configuration was being utilized at the time of the comment.  
**Non Standard:** Indicates that a “Lesser Preferred” runway configuration was being utilized at the time of the comment.  
**QHP:** QuieterHome Program

2. This column is used to indicate the conditions which most likely necessitated a deviation from the standard procedures.

# Comment Locations (SDF/LOU)

July 2014

Legend

●

 LOU

●

 LQHP

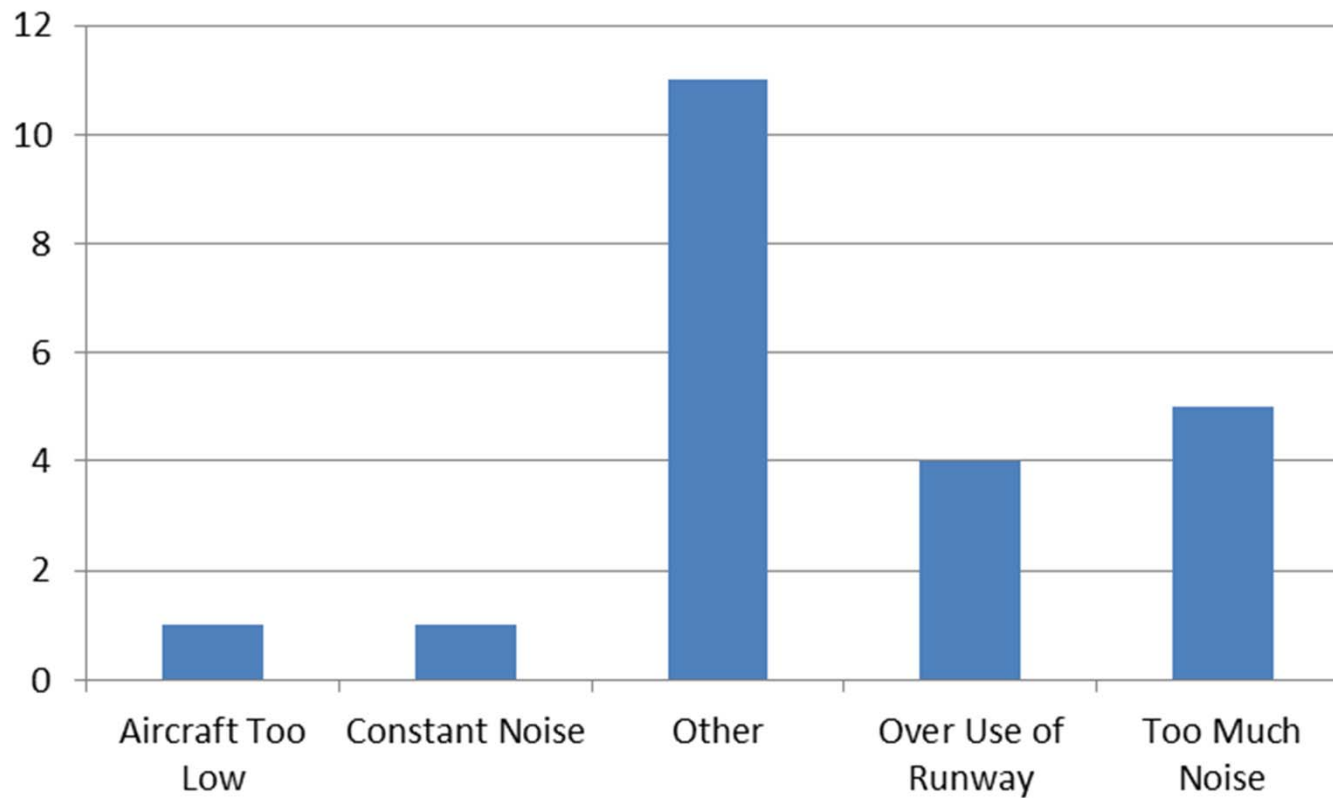
●

 SDF



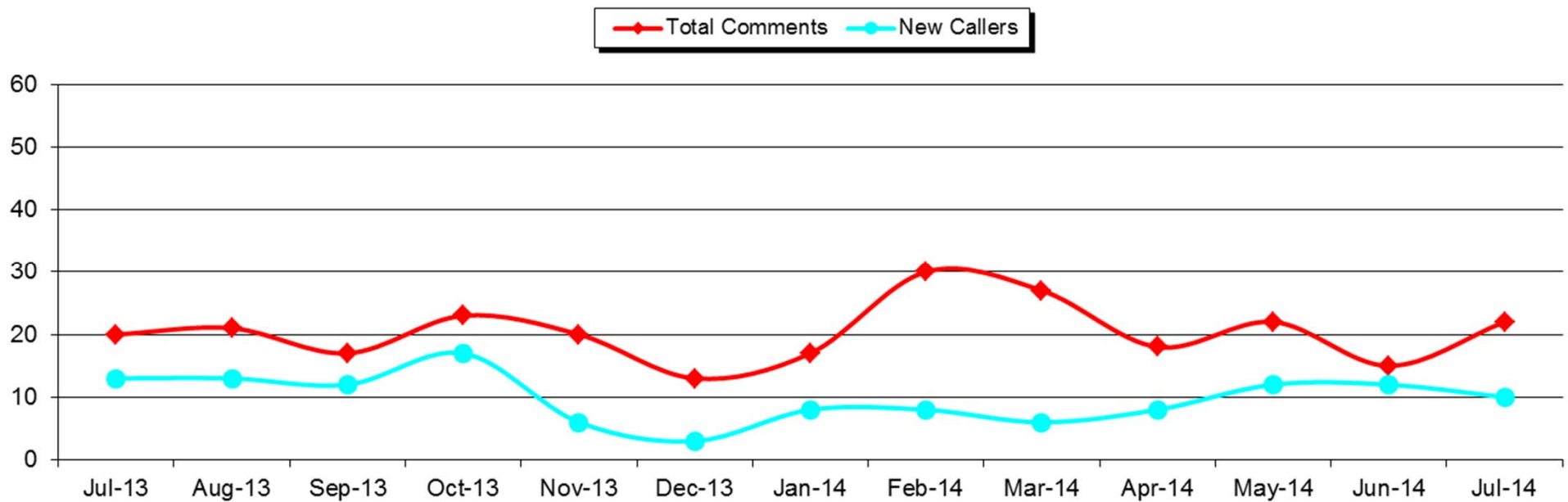
# Comment Type\* (SDF and LOU)

July 2014



# New Address/Comments per Month (SDF and LOU)

July 2014





***LOUISVILLE  
REGIONAL  
AIRPORT  
AUTHORITY®***

---

**NOISE COMMENT REPORT**  
**August 2014**

# Comments (SDF/LOU)

## August 2014

Street	Zip Code	Time Received	Time	Airport	Disturbance Type	CNF Quad	Status	Operation or Comment Type <sup>1</sup>	Deviation Type <sup>2</sup>	Comments
Wolfe AV	40217	2014-08-01 14:22:20	2014-08-01 15:22:20	SDF	Other	NE	Investigated	LQHP	None	Homeowner called to inquire about participation. She said her son was worried it wouldn't get done.
Bourbon AV	40213	2014-08-12 14:22:20	2014-08-12 15:22:20	SDF	Other	NE	Investigated	LQHP	None	A potential homeowner called to see if this property was eligible. She said she was told that it was.
Nightingale RD	40213	2014-08-21 14:22:20	2014-08-21 15:22:20	SDF	Other	NE	Investigated	LQHP	None	New homeowner called regarding eligibility.
Greenup RD	40217	2014-08-21 14:22:20	2014-08-21 15:22:20	SDF	Other	NE	Investigated	LQHP	None	Homeowner called to inquire about eligibility.
							Received	LQHP	4	
Eastern PKY	40217	2014-08-07 16:27:46	2014-08-06 23:30:00	SDF	Noise At Wrong Time	NE	Investigated	Non-Standard	Ops	Winds were coming in from the north at 8 knots around midnight on 8/7/14. However, contraflow was not utilized. Can you find out why?

1. **Standard:** Indicates the "Most Preferred" runway configuration was being utilized at the time of the comment.  
**Non Standard:** Indicates that a "Lesser Preferred" runway configuration was being utilized at the time of the comment.  
**QHP:** QuieterHome Program

2. This column is used to indicate the conditions which most likely necessitated a deviation from the standard procedures.

# Comments (SDF/LOU)

## August 2014

Street	Zip Code	Time Received	Time	Airport	Disturbance Type	CNF Quad	Status	Operation or Comment Type <sup>1</sup>	Deviation Type <sup>2</sup>	Comments
Wildwood DR	47129	2014-08-09 15:36:46	2014-08-09 15:00:00	SDF	Too Much Noise	SI	Investigated	Non-Standard	Operations	I'll bet I talked to you about aircraft noise over 50 times in the early part of this century. Thankfully, it did get better for some time. However, the last month has been absolutely terrible in terms of flights coming from the north and going south. I mean as many as a hundred a day. Very often they are only 2 minutes apart. It is noise that is so corrupting perhaps you can hear it now, and the last one was less than a minute ago. If there is some change in the runway copulation then of course we are going to have to move from this neighborhood. I am still hopeful that that the corridor can be moved east towards interstate 65 which is an industrial corridor and already has lots of noise. I tried to pitch that back then.
W. Ormsby	40203	2014-08-11 23:22:46	2014-08-11 23:00:00	SDF	Too Much Noise	NW	Investigated	Non-Standard	Operations	We are getting planes again this evening. This is a bit of a run here. We have had planes on at least the 5th, 6th, 7th, 8th, 9th, and now tonight the 11th. Please give me a call back and let me know if the winds are requiring all of this?
Mccoy AV	40215	2014-08-15 16:59:46	2014-08-15 16:30:00	SDF	Over Use of Runway	NW	Investigated	Non-Standard	None	The UPS planes are starting to run over again. Just 3 minutes ago one came directly over the house. I have been hearing them at various times. You can just tell that guy on the board from the control tower to guide them a little bit to the right or to the left over someone else's house.

1. **Standard:** Indicates the "Most Preferred" runway configuration was being utilized at the time of the comment.  
**Non Standard:** Indicates that a "Lesser Preferred" runway configuration was being utilized at the time of the comment.  
**QHP:** QuieterHome Program

2. This column is used to indicate the conditions which most likely necessitated a deviation from the standard procedures.

# Comments (SDF/LOU)

## August 2014

Street	Zip Code	Time Received	Time	Airport	Disturbance Type	CNF Quad	Status	Operation or Comment Type <sup>1</sup>	Deviation Type <sup>2</sup>	Comments
Nightingale RD	40213	2014-08-21 14:48:10	2014-08-21 03:00:10	SDF	Aircraft Too Low	NE	Investigated	Standard	None	I have noticed repeated large amounts of airline traffic between the hours of 3 and 5 AM at my house. It would seem that this traffic has increased recently and so has the noise. Are there any programs in place for home owners who have this problem? I live on Nightingale Road. I would really like to get sleep during those hours.
Nightingale RD	40213	2014-08-21 15:19:10	2014-08-21 03:00:10	SDF	Too Much Noise	NE	Investigated	Standard	None	I am a recent home buyer and I have noticed that there is a lot of airplane noise around my house between the hours of 3 and 5 AM. Can you give me a call so we could chat about any way I can reduce that.
Phillips LN	40209	2014-08-21 19:36:10	2014-08-21 04:00:10	SDF	Too Much Noise	NW	Investigated	Non-Standard	Weather	I hope you can help me with a quick question. My company has an office in Louisville, and I come for meetings 4 or 5 times per year. We usually stay at one of the airport hotels on Phillips (mainly the Residence Inn). Our last meeting – the week of July 28 – we experienced objectionable airplane noise at 4-5 AM. It sounded like cruise missiles were landing in the parking lot. I don't remember this ever happening before. My question is – was something unusual happening that week, or do I just have a bad memory? We're scheduling another meeting for September and we'll stay farther away if there's a chance of high noise levels at that hour.
							Received	LRAA	7	

1. **Standard:** Indicates the “Most Preferred” runway configuration was being utilized at the time of the comment.  
**Non Standard:** Indicates that a “Lesser Preferred” runway configuration was being utilized at the time of the comment.  
**QHP:** QuieterHome Program

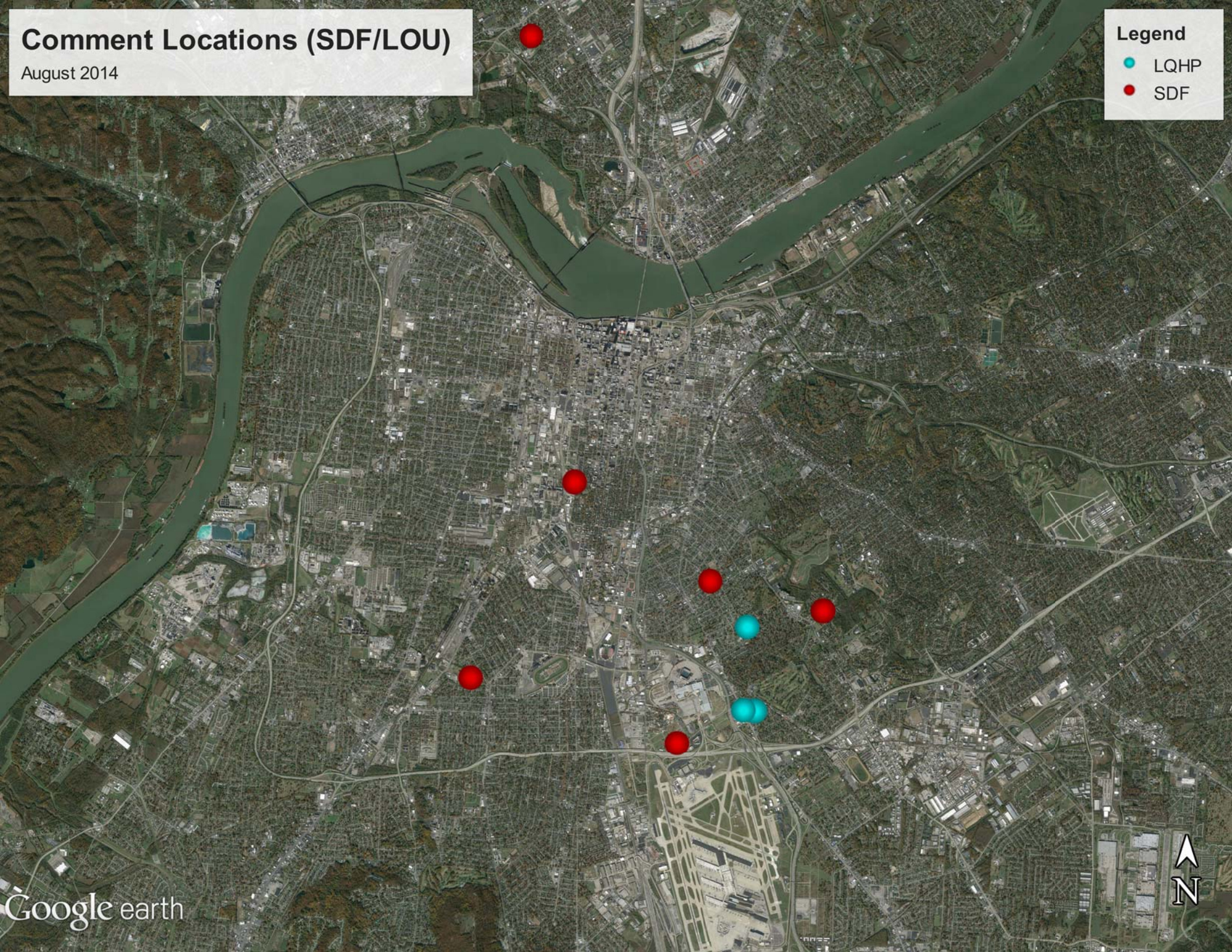
2. This column is used to indicate the conditions which most likely necessitated a deviation from the standard procedures.

# Comment Locations (SDF/LOU)

August 2014

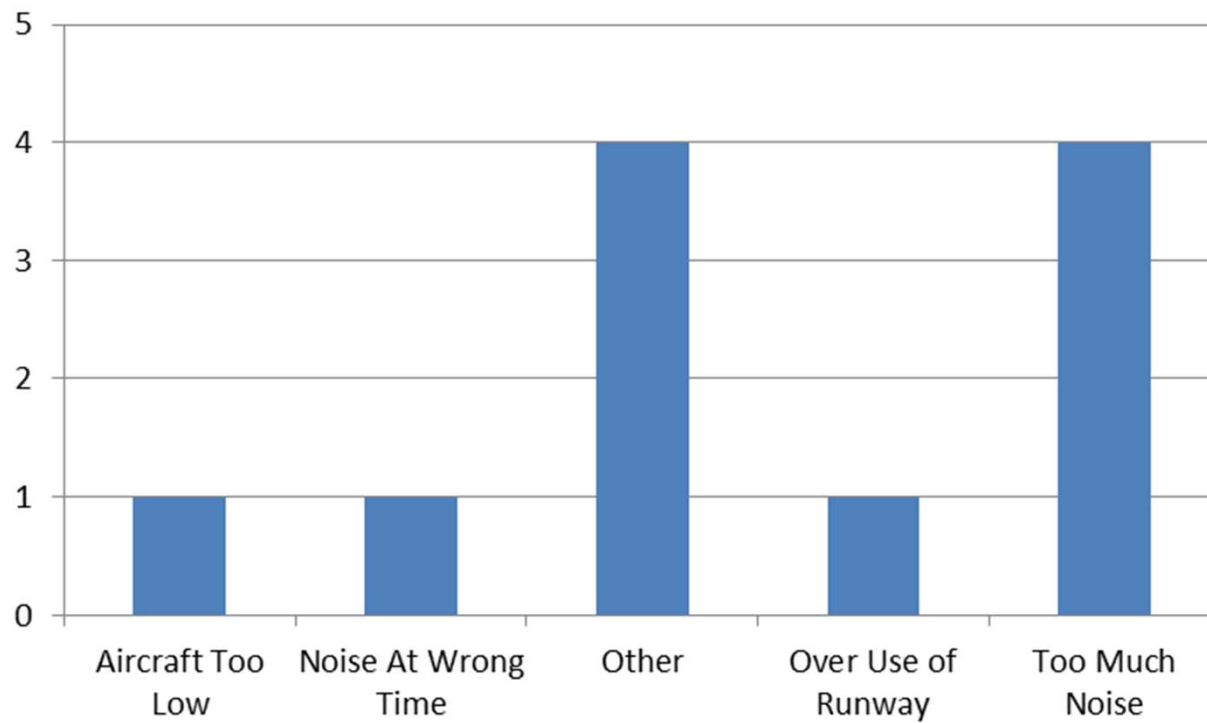
## Legend

- LQHP
- SDF



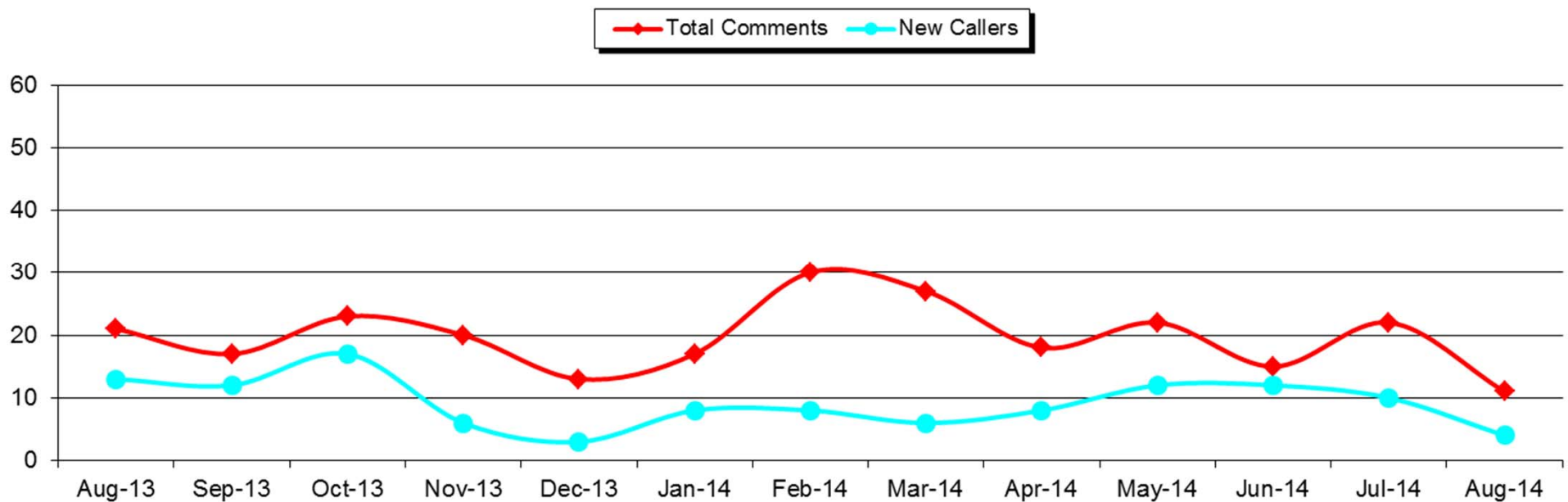
# Comment Type\* (SDF and LOU)

August 2014



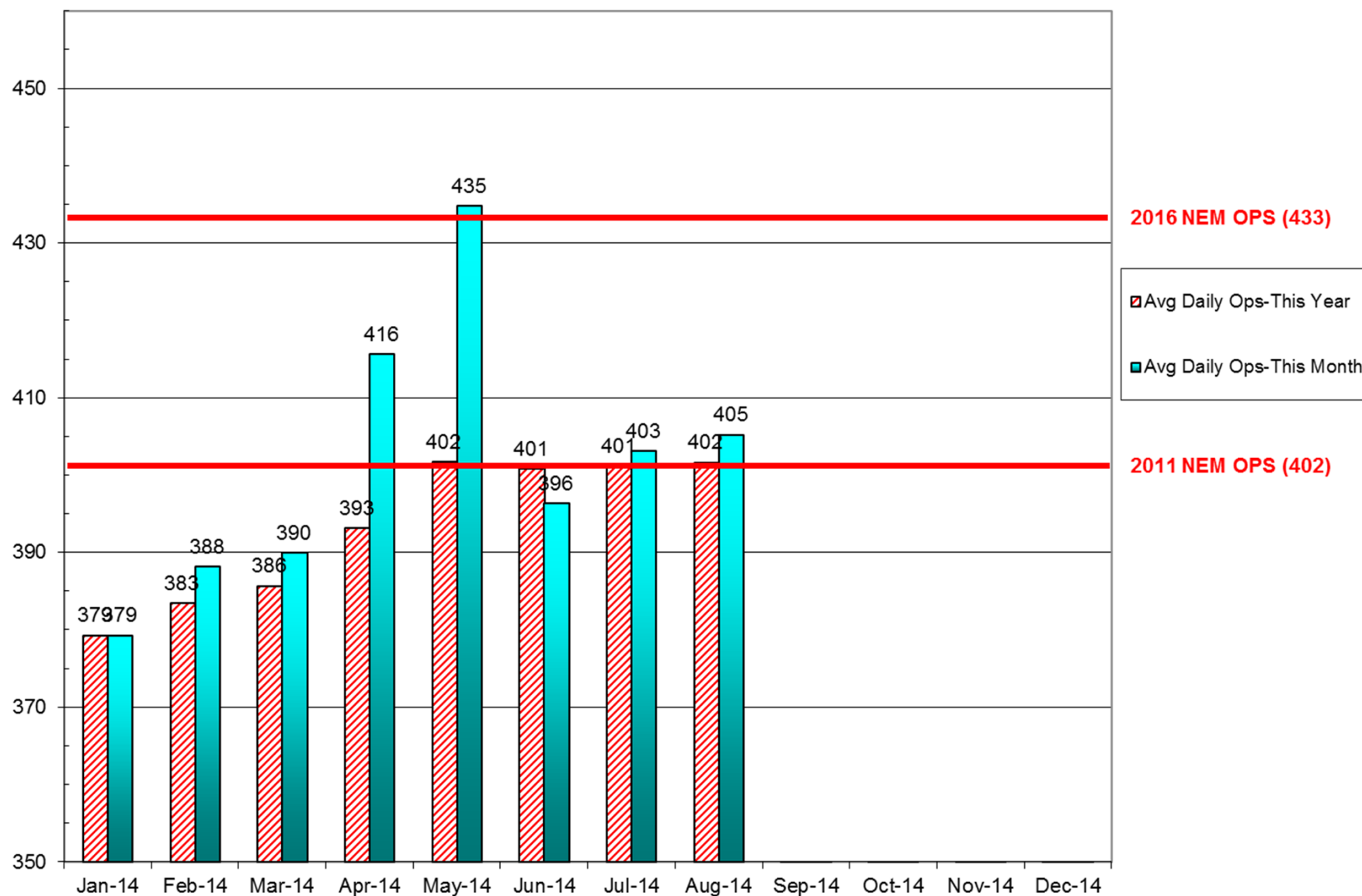
# New Address/Comments per Month (SDF and LOU)

August 2014



# Operations (SDF)

As of August 31, 2014



Source: Louisville <http://www.flylouisville.com/regional-airport-authority/reports-and-statistics/>

# Daily Runway Use Uncorrected (SDF) July 2014

[illegible]

# Daily Runway Use (SDF)

Tower Comments July 2014

Day	Date	Time	Comment
tue	1-Jul-14	1030-1230	Wind 2313, forecast 2413G20
wed	2-Jul-14	1100-1230	R3704 active
wed	2-Jul-14	2130-2200	Wind 3012
thu	3-Jul-14	1300-2030	Wind 3309
fri	4-Jul-14	1730-2130	Wind 0110
sat	5-Jul-14		
sun	6-Jul-14		
mon	7-Jul-14	0930-1030	Wind 2315 forecast 2215G21
tue	8-Jul-14	1130-1230	Wind 2412 wet runways
tue	8-Jul-14	2200-0000	Thunderstorms south of airport.
wed	9-Jul-14	0000-0230	Thunderstorms south of airport.
wed	9-Jul-14	0930-1000	Valid reason not documented
wed	9-Jul-14	1530-2130	Wind 2910G18
thu	10-Jul-14		
fri	11-Jul-14	0930-1000	Valid reason not documented
sat	12-Jul-14		
sun	13-Jul-14		
mon	14-Jul-14	0430-0600	Wind 3409
mon	14-Jul-14	0930-1030	Wind 2212 wet runways
mon	14-Jul-14	1500-1930	Wind 2913, weather northwest of arpt
tue	15-Jul-14		
wed	16-Jul-14	1300-1730	Wind 3508
wed	16-Jul-14	2000-1730	Wind 3211
thu	17-Jul-14	1600-1630	Wind 0110
thu	17-Jul-14	2100-2130	Wind 0211
fri	18-Jul-14		
sat	19-Jul-14		
sun	20-Jul-14	0830-0900	Wind 3608
mon	21-Jul-14	0930-1030	Valid reason not documented
tue	22-Jul-14		
wed	23-Jul-14	1400-2030	Wind 3410 forecast 3609
thu	24-Jul-14		
fri	25-Jul-14		
sat	26-Jul-14		
sun	27-Jul-14		
mon	28-Jul-14	0000-0900	Wind 3110
tue	29-Jul-14	1300-1630	Wind 3210
tue	29-Jul-14	2000-2030	Wind 3308
tue	29-Jul-14	2200-0000	R3704 active
wed	30-Jul-14	0000-0230	R3704 active
wed	30-Jul-14	2200-0000	R3704 active
thu	31-Jul-14	0000-0230	R3704 active
thu	31-Jul-14	2200-0000	R3704 active

# Daily Runway Use Uncorrected (SDF) August 2014

Flow	Time	Fri 8/1	Sat 8/2	Sun 8/3	Mon 8/4	Tue 8/5	Wed 8/6	Thu 8/7	Fri 8/8	Sat 8/9	Sun 8/10	Mon 8/11	Tue 8/12	Wed 8/13	Thu 8/14	Fri 8/15	Sat 8/16	Sun 8/17	Mon 8/18	Tue 8/19	Wed 8/20	Thu 8/21	Fri 8/22	Sat 8/23	Sun 8/24	Mon 8/25	Tue 8/26	Wed 8/27	Thu 8/28	Fri 8/29	Sat 8/30	Sun 8/31	Time
North Flow	0:00						XXX	XXX	XXX	XXX																							0:00
	0:30							XXX																									0:30
	1:00																																1:00
	1:30																																1:30
	2:00																																2:00
	2:30																																2:30
South Flow	3:00																																3:00
	3:30																																3:30
	4:00																																4:00
	4:30																																4:30
	5:00																																5:00
	5:30																																5:30
	6:00																																6:00
	6:30																																6:30
	7:00																																7:00
	7:30																																7:30
	8:00																																8:00
	8:30																																8:30
North Flow	9:00																																9:00
	9:30																																9:30
	10:00																																10:00
	10:30																																10:30
	11:00																																11:00
	11:30																																11:30
South Flow	12:00																																12:00
	12:30																																12:30
	13:00																																13:00
	13:30																																13:30
	14:00																																14:00
	14:30																																14:30
	15:00																																15:00
	15:30																																15:30
	16:00																																16:00
	16:30																																16:30
	17:00																																17:00
North Flow	17:30																																17:30
	18:00																																18:00
	18:30																																18:30
	19:00																																19:00
	19:30																																19:30
	20:00																																20:00
South Flow	20:30																																20:30
	21:00																																21:00
	21:30																																21:30
	22:00																																22:00
	22:30																																22:30
	23:00																																23:00
North Flow	23:30																																23:30
	0:00																																0:00

Preferred Flow

DATIS Reported Conditions Indicate Support for Non-Preferred Flow

DATIS Reported Conditions Do Not Indicate Support for Non-Preferred Flow

South Flow is Preferred Flow from 09:30 Saturday - 09:30 Monday

XXX Complaint

Source: Louisville International Airport Aircraft Flight Tracking and Noise Management System (AF INMS)

# Daily Runway Use (SDF)

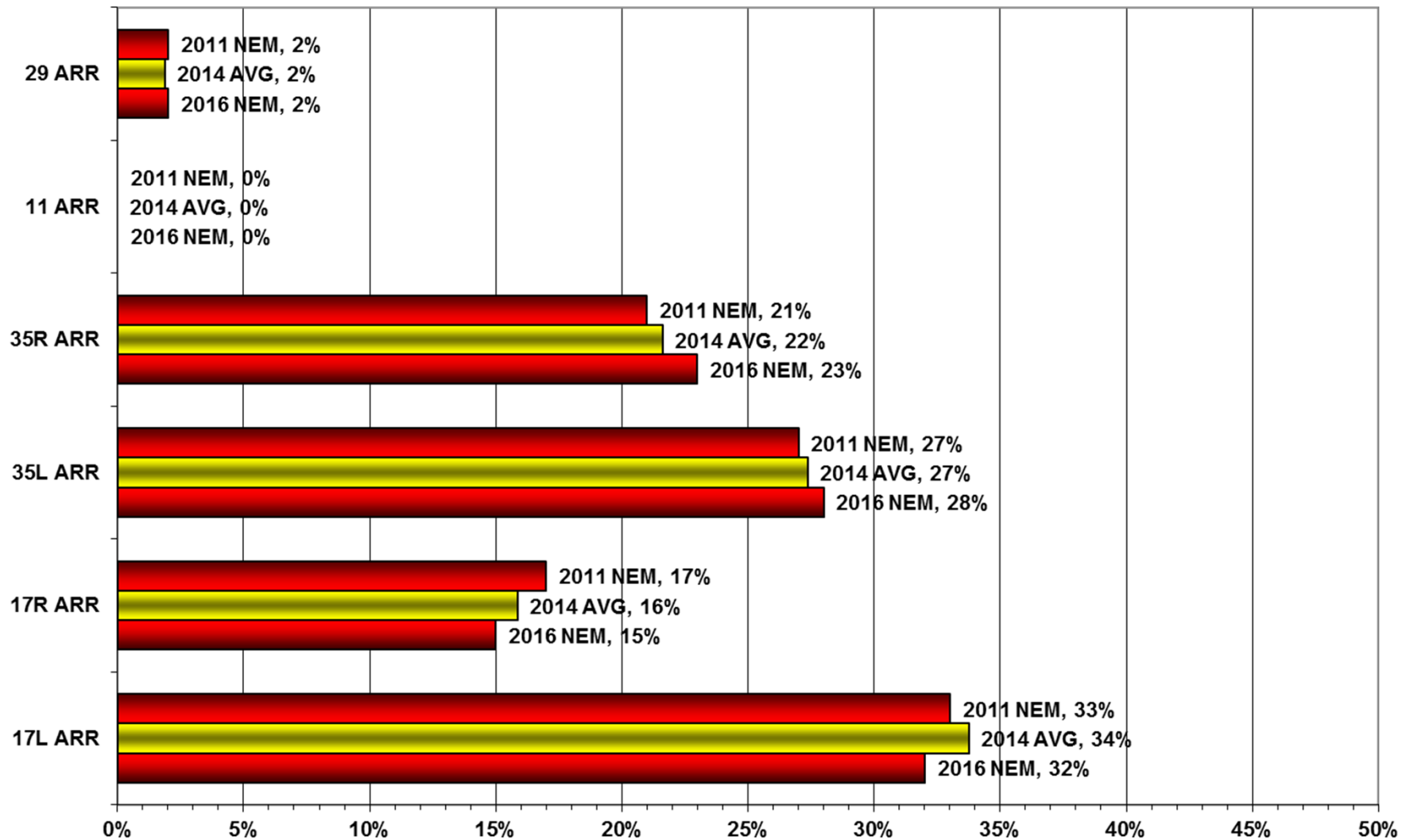
Tower Comments August 2014

Day	Date	Time	Comment
Fri	1-Aug-14	0000-0230	Went north @ 0011
Sat	2-Aug-14	2000-2100	Wind 3214
Sun	3-Aug-14	1630-0000	Wind 3508, no valid reason after 1937
Mon	4-Aug-14	0930-1000	Delayed due to traffic
Mon	4-Aug-14	1300-1330	Delayed due to traffic
Mon	4-Aug-14	2200-0000	R3704 increased separation
Tue	5-Aug-14	0000-0230	R3704 increased separation
Tue	5-Aug-14	2200-0000	R3704 increased separation
Wed	6-Aug-14	0000-0230	R3704 increased separation
Wed	6-Aug-14	0930-1230	Wind on final 2222
Wed	6-Aug-14	1600-0000	Wind 3110
Thu	7-Aug-14	0000-0230	R3704 increased separation
Thu	7-Aug-14	2200-0000	R3704 increased separation
Fri	8-Aug-14	0000-0230	R3704 increased separation
Fri	8-Aug-14	1300-1600	NAVAID unavailability for south operation
Fri	8-Aug-14	2200-0000	R3704 increased separation
Sat	9-Aug-14	0000-0230	R3704 increased separation
Sun	10-Aug-14		
Mon	11-Aug-14	0930-1230	Forecast 2306 wet rwys, went north @1025
Mon	11-Aug-14	2200-0000	R3704 Area B
Tue	12-Aug-14	0000-0230	R3704 Area B
Wed	13-Aug-14	1300-1600	Wind 3108, forecast 3208 (marginal)
Thu	14-Aug-14	1300-1530	Log shows south operation
Thu	14-Aug-14	1700-2130	Log shows south operation
Fri	15-Aug-14		
Sat	16-Aug-14		
Sun	17-Aug-14		
Mon	18-Aug-14		
Tue	19-Aug-14		
Wed	20-Aug-14		
Thu	21-Aug-14	2200-0000	2200-2253 north ops, 2253-0000 wind 1910
Fri	22-Aug-14	0000-0230	Log shows north operation
Sat	23-Aug-14		
Sun	24-Aug-14	0600-1030	Wind 3408 & IFR
Mon	25-Aug-14	1100-1230	R3704 increased separation
Tue	26-Aug-14		
Wed	27-Aug-14		
Thu	28-Aug-14		
Fri	29-Aug-14	1200-1230	Wind 1708
Sat	30-Aug-14	1800-2030	Wind 3209 wet rwys
Sun	31-Aug-14		

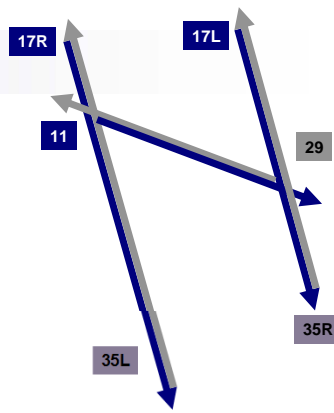
# Runway Use (SDF)

Arrivals

NEM vs. Actual  
January 01 - August 31, 2014



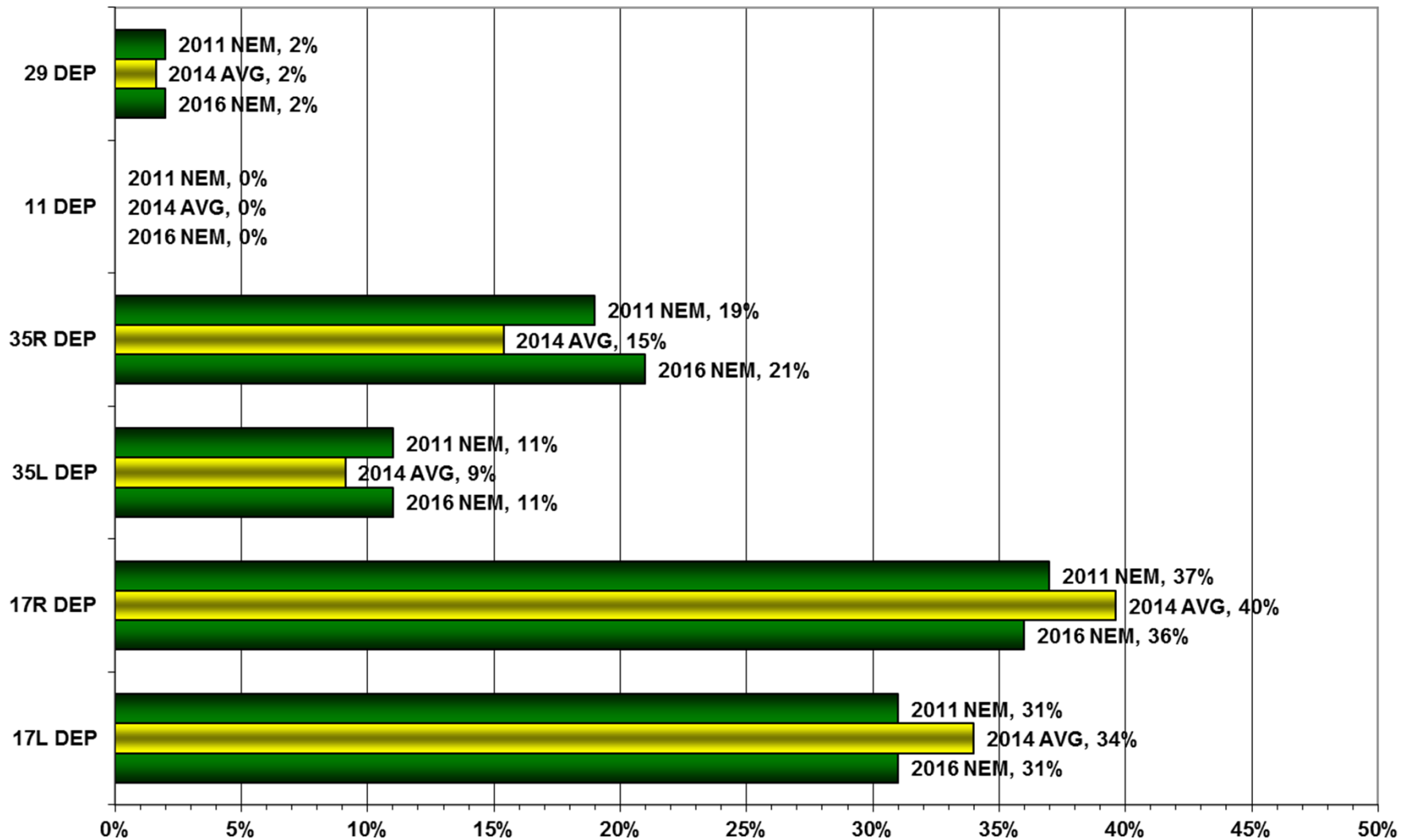
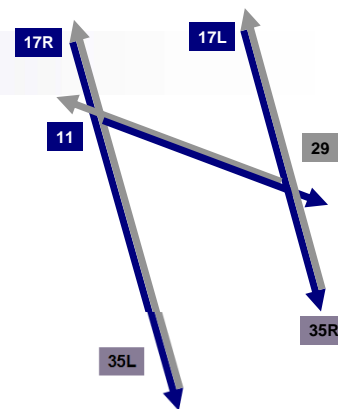
Source: Louisville International Airport  
Aircraft Flight Tracking and Noise Management System (AFTNMS)



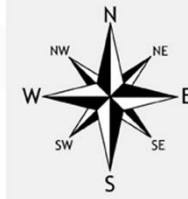
# Runway Use (SDF)

Departures

NEM vs. Actual  
January 01, - August 31, 2014



Source: Louisville International Airport  
Aircraft Flight Tracking and Noise Management System (AFTNMS)

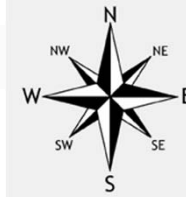


# Runway Use 0930L-1230L<sub>(SDF)</sub>

As of August 2014

	Arrival Percentage by Runway								Departure Percentage by Runway							
	11	17L	17R	29	35L	35R	% From South	Arrival Count	11	17L	17R	29	35L	35R	% To North	Departure Count
Sep-12	0	29	10	0	21	40	61	655	0	33	10	1	13	43	56	353
Oct-12	1	20	26	3	20	31	51	740	2	24	19	3	9	43	52	475
Nov-12	0	10	4	3	50	33	83	762	0	7	4	3	9		9	
Dec-12	0	18	12	5	41	24	65	779	0	17	9	3	8	63	71	412
Jan-13	0	16	12	0	42	30	72	742	0	17	16	2	14	52	66	436
Feb-13	0	21	11	9	39	2	41	628	0	21	16	7	12	44	56	354
Mar-13	0	10	6	0	51	33	84	728	0	10	8	3	14	65	79	441
Apr-13	0	24	27	2	27	20	47	719	0	26	23	3	8	40	48	441
May-13	0	33	33	0	20	14	34	785	0	33	31	1	10	25	35	410
Jun-13	0	10	13	0	43	31	74	717	0	8	13	0	22	57	79	534
Jul-13	0	23	10	0	42	25	67	694	0	24	12	0	20	44	64	465
Aug-13	0	22	10	0	43	25	68	725	0	18	13	0	13	56	69	483
Sep-13	0	13	5	0	43	39	82	676	0	14	5	0	25	56	81	448
Oct-13	0	16	14	2	37	31	68	864	0	12	18	3	13	54	67	535
Nov-13	0	29	12	0	39	20	59	721	0	26	19	3	12	40	52	437
Dec-13	0	14	13	0	42	31	73	943	0	14	16	0	9	61	70	460
Jan-14	0	27	21	2	29	21	50	682	0	28	21	4	19	37	56	401
Feb-14	0	13	11	7	37	32	69	669	0	19	11	7	15	48	63	359
Mar-14	0	25	21	7	29	18	47	675	0	30	18	4	7	41	48	408
Apr-14	0	33	19	5	23	20	43	700	0	39	19	6	9	27	36	416
May-14	0	32	25	0	24	19	43	706	0	36	22	1	5	36	41	387
Jun-14	0	27	22	0	36	15	51	643	0	36	20	2	10	32	42	389
Jul-14	0	12	12	0	44	32	76	733	0	12	10	0	20	58	78	410
Aug-14	0	13	2	0	54	31	85	673	0	11	6	0	27	56	83	407
Monthly Avg.	0	20	15	2	37	26	62		0	21	15	2	13	47	60	

Source: Louisville International Airport  
Aircraft Flight Tracking and Noise Management System (AFTNMS)



# Gate Compliance by Runway

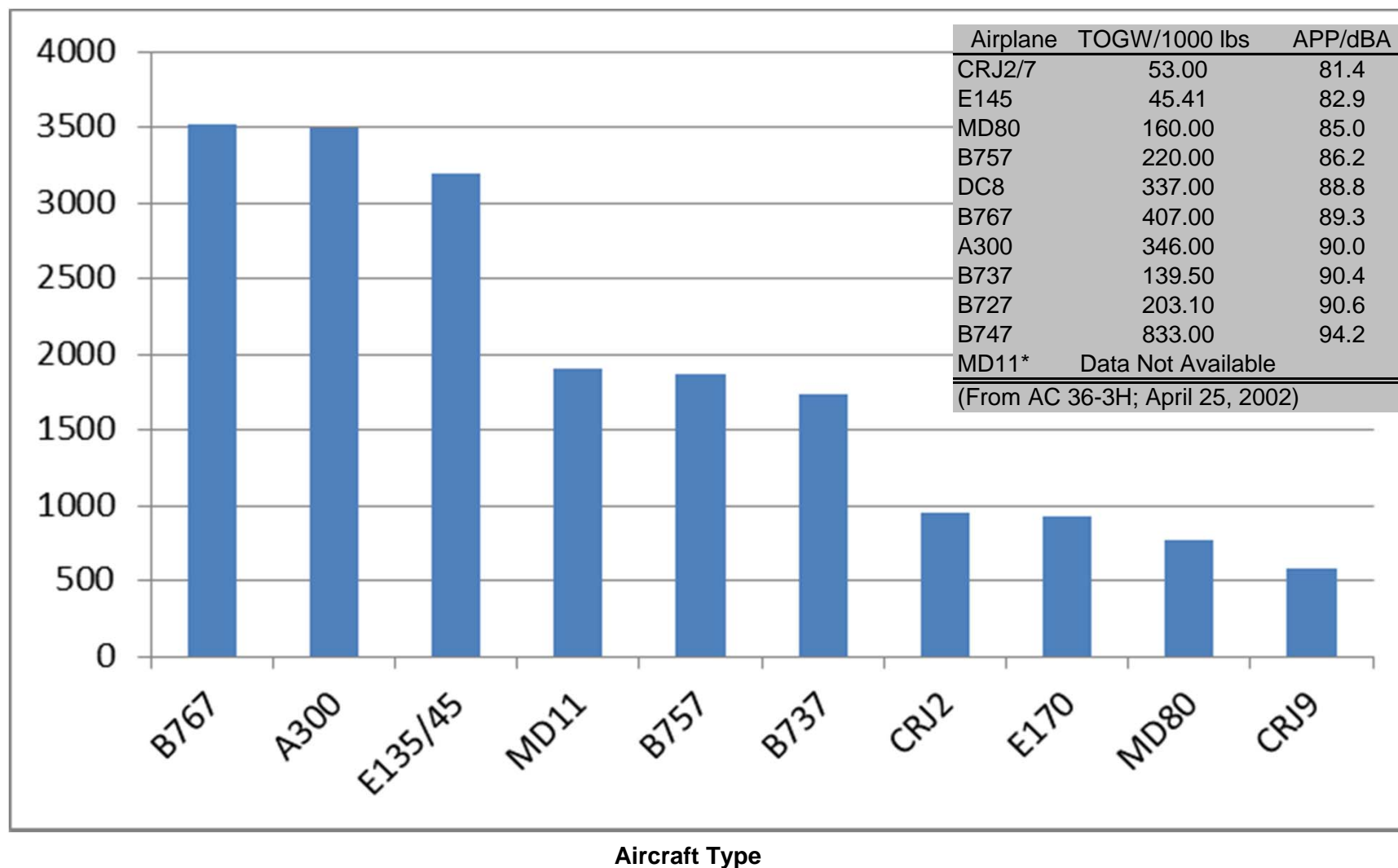
As of August 31, 2014

	ARRIVALS Percent Compliant					Departure Percent Compliant				
Month	17L	17R	35L	35R	ARR AVG	17L	17R	35L	35R	DEP AVG
Sep-12	79%	93%	81%	78%	83%	53%	72%	72%	88%	71%
Oct-12	80%	92%	85%	82%	85%	70%	59%	70%	89%	72%
Nov-12	73%	73%	82%	85%	78%	84%	82%	84%	92%	86%
Dec-12	84%	93%	89%	91%	89%	74%	85%	72%	79%	78%
Jan-13	82%	93%	82%	83%	85%	73%	86%	81%	87%	82%
Feb-13	78%	93%	85%	84%	85%	73%	85%	76%	78%	78%
Mar-13	73%	86%	88%	86%	83%	82%	89%	82%	86%	85%
Apr-13	75%	90%	77%	78%	80%	73%	89%	80%	81%	81%
May-13	81%	87%	78%	77%	81%	70%	84%	76%	92%	81%
Jun-13	73%	84%	76%	82%	79%	76%	88%	74%	86%	81%
Jul-13	82%	87%	81%	82%	83%	81%	84%	76%	91%	83%
Aug-13	78%	89%	79%	81%	82%	78%	83%	78%	92%	83%
Sep-13	78%	88%	76%	81%	81%	79%	86%	77%	93%	84%
Oct-13	77%	90%	83%	79%	82%	75%	90%	77%	90%	83%
Nov-13	77%	93%	80%	82%	83%	71%	91%	79%	92%	83%
Dec-13	82%	94%	90%	89%	89%	64%	87%	71%	89%	78%
Jan-14	78%	88%	86%	84%	84%	67%	91%	75%	89%	81%
Feb-14	80%	89%	86%	85%	85%	60%	90%	76%	89%	79%
Mar-14	74%	90%	79%	81%	81%	71%	86%	78%	87%	81%
Apr-14	79%	91%	82%	81%	83%	68%	81%	76%	86%	78%
May-14	75%	88%	78%	81%	81%	68%	85%	59%	82%	74%
Jun-14	82%	92%	86%	82%	86%	71%	89%	81%	94%	84%
Jul-14	79%	88%	78%	76%	80%	88%	89%	79%	92%	87%
Aug-14	84%	91%	82%	80%	84%	89%	85%	76%	90%	85%
<b>24 Month Avg.</b>					<b>83%</b>					<b>81%</b>

Source: Louisville International Airport  
Aircraft Flight Tracking and Noise Management System (AFTNMS)

# Operations by Aircraft Type (SDF) Only Top 10 Aircraft Types Shown

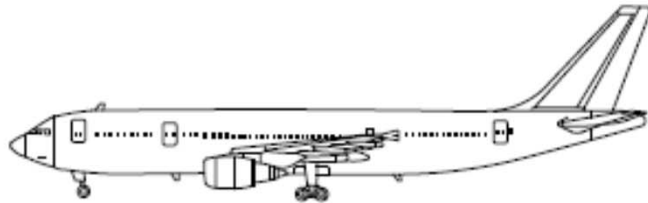
July/August 2014



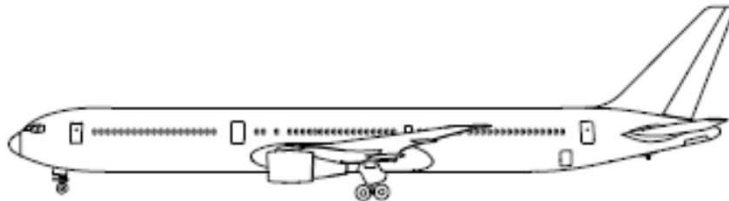
Source: Louisville International Airport

Aircraft Flight Tracking and Noise Management System (AFTNMS)

# Sample Aircraft Types (SDF)



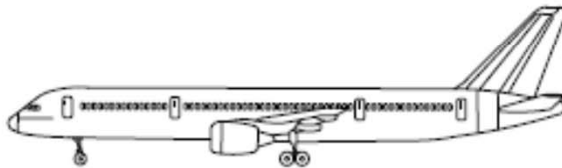
**A300**



**B767**



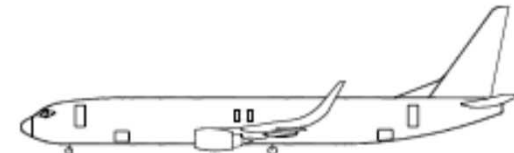
**E135/45**



**B757**



**MD11**



**B737**



**CRJ2**



**E170**



**MD80**



**CRJ9**