

Community Noise Forum
Monday, September 28, 2015
Agenda

- I. Call to order: 6:00PM
- II. Minutes of May 18, 2015, and July 27, 2015.
- III. Part 150 NCP
 - A. Update: Noise Insulation Program
 - B. Contraflow Exceptions
- IV. Current Noise Concerns
 - A. Noise Concerns/Complaints
 - B. Runway Utilization
 - C. Construction and Maintenance Activity
- V. Announcements
- VI. Guest Comments
- VII. Next Meeting: November 23, 2015
- VIII. Adjournment

COMMUNITY NOISE FORUM (CNF)
Monday, May 18, 2015

Members

John Sistarenik, ANA
Pete Levermore, Airline Affairs
Mary Rose Evans, LRAA Board
Brian Sinnwell, LRAA
Bob Slattery, LRAA
Mike Zanone, Northwest

Denny Thompson, Southeast
Bill Tate, FAA
Ken Dietz, UofL
Pat Gould, Northeast
Verna Goatley, Metro

Guests

Brian Sandmann, Minoma Ave.
Vic Krofhage, Minoma Ave.

Chet Heim, Bourbon Ave.

The meeting was called to order at 6:00 p.m. by John Sistarenik. The March 23, 2015 meeting minutes were reviewed and accepted by Verna Goatley and seconded by Pat Gould.

Part 150 NCP:

A. Updates:

Phase 1, 2, 3A, 3A-1, 4A, 4B and 5: Sound insulation is complete. To date 384 of 688 families have received sound insulation.

Phase 6: Sound Insulation for 60 families. The project was advertised on March 9, 2014. Phase 6 was awarded at the April 2014 Board meeting. Construction is underway.

Phase 7: Sound Insulation for 66 families. The project advertised on May 4, 2014. Contract was awarded at the June 2014 board meeting. Construction is underway.

Phase 7LC: Sound Insulation for 32 families located in phases 3A-7. The project advertised on October 5, 2014. The contract was awarded at the November 2014 Board meeting.

Phase 3B: Awaiting easement resolution. Audubon Park has filed an appeal.

Our current priority is to complete the remaining homes by the September 30, 2015 deadline.

B. Contraflow Exceptions: Contraflow for March was **71% for arrivals** from the south and **66% for departures** to the south. In April, **arrivals** from south were 53% and **departures** to the south were **77%**. A daily summary for March and April is contained in the handout. As of May 1, 2015 arrivals from the south are averaging 67% and departures to the south average 74%. The 2 year average for arrivals from the south is 70% and departures to the south average 81%. A monthly summary going back 8 years is also included in the handout.

Current Noise Concerns:

A. Report on Noise Concerns/Complaints: We received a total of 20 comments in March. 8 comments were received at the QHP project office and 12 were received by the LRAA. In April we received a total of 19 comments. 6 were received at the QHP project office and 13 were received by the LRAA.

B. Runway Utilization: Runway utilization percentages for March and April are contained in the handout. Daily runway utilization for March and April as well as comments from the Air Traffic Control Tower for March are also included in the handout. Due to the early meeting date the operations count for April is not available until the 20th of the month.

C. Construction and Maintenance Activity: Brian Sinnwell announced that the 11-29 Runway Safety Area project started May 4th and should be concluded in November 2015. Impacts to the airfield are closures to RW 11-29 and some other minor closures to the west runway. This project requires the construction of a tunnel which will require blasting of the solid rock in that location. Blasting will occur on the west side of the airport during the afternoon between the hours of 1:00 PM-2:00 PM on weekdays only.

Announcements: Bob Slattery called the groups attention to a press release from the FAA regarding a survey they will be conducting about airport noise. The FAA is undertaking a multi-year effort to update the scientific evidence on the relationship between aircraft noise exposure and its effects on communities around airports. The noise annoyance survey will be sent out to communities in the vicinity of 20 U.S. Airports. In order not to bias the survey results, the FAA does not plan to publish the list of airports. This study will likely conclude in early-to-mid 2016, with results analyzed and published in late 2016 or early 2017.

Guest Comments: Chet Heim recently purchased a home in the area and at the present time is not eligible for noise insulation. He wanted to know if there will be an opportunity in the future for him to qualify. Bob Slattery answered that we are following the FAA guidelines and we are limited to what areas qualify for mitigation. Bob offered to discuss further with him after the meeting. John Sistarenik informed Mr. Heim that state legislation is in the works to provide homeowners who do not qualify for sound insulation program reimbursement in the form of a state tax credit if they choose to sound insulate their own homes.

Brian Sandmann said that he is in the process of expanding his home and wants to know what type of improvements he should do regarding sound insulation of his home and if in the future his home may qualify for the program. Bob directed Mr. Sandmann to the QuieterHome project office for non-eligible homeowner information. Bob also explained that the Noise Exposure Maps get updated periodically. Typically, Noise Exposure Maps are good for 5 years. The current Maps are good until 2016. At this time we cannot project if the areas will expand, contract, or stay about the same.

Vic Korfhage wanted to know, regarding the legislation, if there was anything neighbors could do as a group to express their opinions. John suggested that he give his information to Mary Rose Evans who is the president of the Airport Neighbors Alliance (ANA).

Next Meeting: Monday, July 27, 2015 at 6 p.m.

Adjournment: A motion was made to adjourn the meeting at 6:50 p.m. by Mike Zanone. The motion was seconded by Denny Thompson.

COMMUNITY NOISE FORUM (CNF)
Monday, July 27, 2015

Members

John Sistarenik, ANA
Tom Foote, UPS (sub)
Mary Rose Evans, LRAA Board
Brian Sinnwell, LRAA
Bob Slattery, LRAA

Denny Thompson, Southeast
Jason Schmidt, KyANG
Pat Gould, Northeast
Mike Zanone, Northwest

Guests

Tom & Nancy Denton, Ashland Ave.
Betsy Ruhe, Southern Pkwy.
Linda Noe, Pindell Ave.

Chris & Clare Noe, Glenafton Ln.
Steve Ramser, Glenafton Ln.

The meeting was called to order at 6:00 p.m. by John Sistarenik. Since there wasn't a quorum, the meeting was acting as a committee of the whole. The May 18, 2015 meeting notes were presented to the group and will be approved at the September meeting.

Part 150 NCP:

A. Updates:

Phase 1, 2, 3A, 3A-1, 4A, 4B, 5 and 7: Sound insulation is complete. To date 450 of 688 families have received sound insulation.

Phase 6: Sound Insulation for 60 families. The project was advertised on March 9, 2014. Phase 6 was awarded at the April 2014 Board meeting. Construction is underway.

Phase 7LC: Sound Insulation for 32 families located in phases 3A-7. The contract was awarded at the November 2014 Board meeting. Construction began in July 2015 and is currently underway.

Phase 3B: Awaiting easement resolution. Audubon Park has filed an appeal.

B. Contraflow Exceptions: Contraflow for May was **75% for arrivals** from the south and **80% for departures** to the south. In June, **arrivals** from south were 57% and **departures** to the south were 91%. A daily summary for May and June is contained in the handout. As of June 30, 2015 arrivals are averaging 67% and departures are averaging 78%. The 2 year average for arrivals from the south is

70% and departures to the south average 81%. A monthly summary going back 8 years is also included in the handout.

Current Noise Concerns:

A. Report on Noise Concerns/Complaints: We received a total of 15 comments in May. 9 comments were received at the QHP project office and 6 were received by the LRAA. In June we received a total of 24 comments. 15 were received at the QHP project office and 9 were received by the LRAA.

B. Runway Utilization: Runway utilization percentages for May and June are contained in the handout. Daily runway utilization for May and June as well as comments from the Air Traffic Control Tower are also included in the handout.

C. Construction and Maintenance Activity: Brian Sinnwell announced that the 11-29 Runway Safety Area project is underway and will be completed in November 2015. We still do not expect too much impact on runway use except for the times that we need to close the east or west runway depending on where work is being done. Brian also informed the group that the LRAA board approved a contract for our consultant to begin work on a feasibility study for the sound insulation of buildings at the University of Louisville.

Announcements: Bob Slattery informed the group that the LRAA budget approved in June included an update to the Noise Exposure Maps for calendar years 2016-2021 or 2017-2022. The Aviation Environmental Design Tool (AEDT) which replaces the Integrated Noise Model (INM) will be used for this effort.

Guest Comments: Betsy Ruhe is with the Beechmont Neighborhood Association and is looking for assistance and support for her groups effort to conduct a walkability study of the Phillips Lane corridor. Her group would like to have a street scape plan for that area in order to help make the area more appealing and safer.

Nancy Bowman-Denton is on the Board of the Beechmont Neighborhood Association and the Board is concerned about the truck traffic that is coming through her neighborhood (Beechmont) due to the relocation of Crittenden Drive. Their neighborhood association is looking to have signs put up directing the truck traffic away from neighborhood streets and back towards Strawberry Lane where the streets are wider and can better accommodate large trucks.

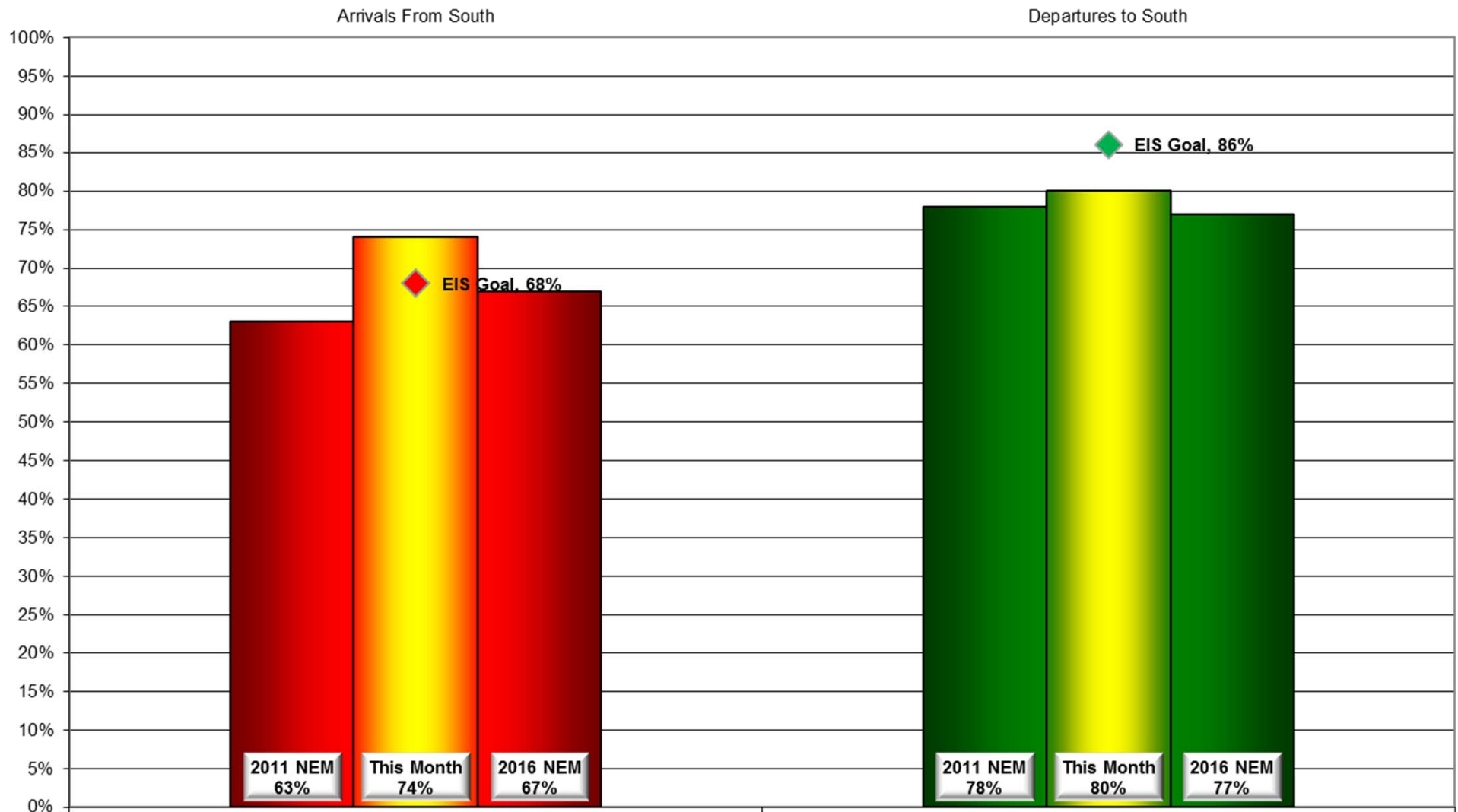
Steve Ramser wants to know why he doesn't qualify for sound insulation. Bob explained to him that we have to follow the boundaries in the noise exposure maps. If the boundaries change it will be due to the update of the noise exposure maps. The current map is good through 2016. Mary Rose Evans informed Mr. Ramser that legislation is currently proposed that would provide tax credits for people who live in the DNL 60 and above noise contour that install sound insulation treatments on their own.

Chris Noe wants to know if the numbers of aircraft operations include all military, commercial and private planes. Bob told him it does. Mr. Noe wants to know how we track the planes that don't pass through the gates. Bob told him that the gates primarily are for jet aircraft but all aircraft are counted in the airport operations and runway usage reports. He wants to know why the C130's are buzzing around his house. Jason Schmidt explained some of the scenario's that would cause C-130's to fly an unusual pattern.

Next Meeting: Monday, September 28, 2015 at 6 p.m.

Adjournment: At 7:00 PM a motion was made and seconded to adjourn the meeting.

Monthly Contraflow July 1-31, 2015



Daily Runway Use Summary - July 2015

(from 10:00 PM date list in first column to 7:00 AM the following morning)

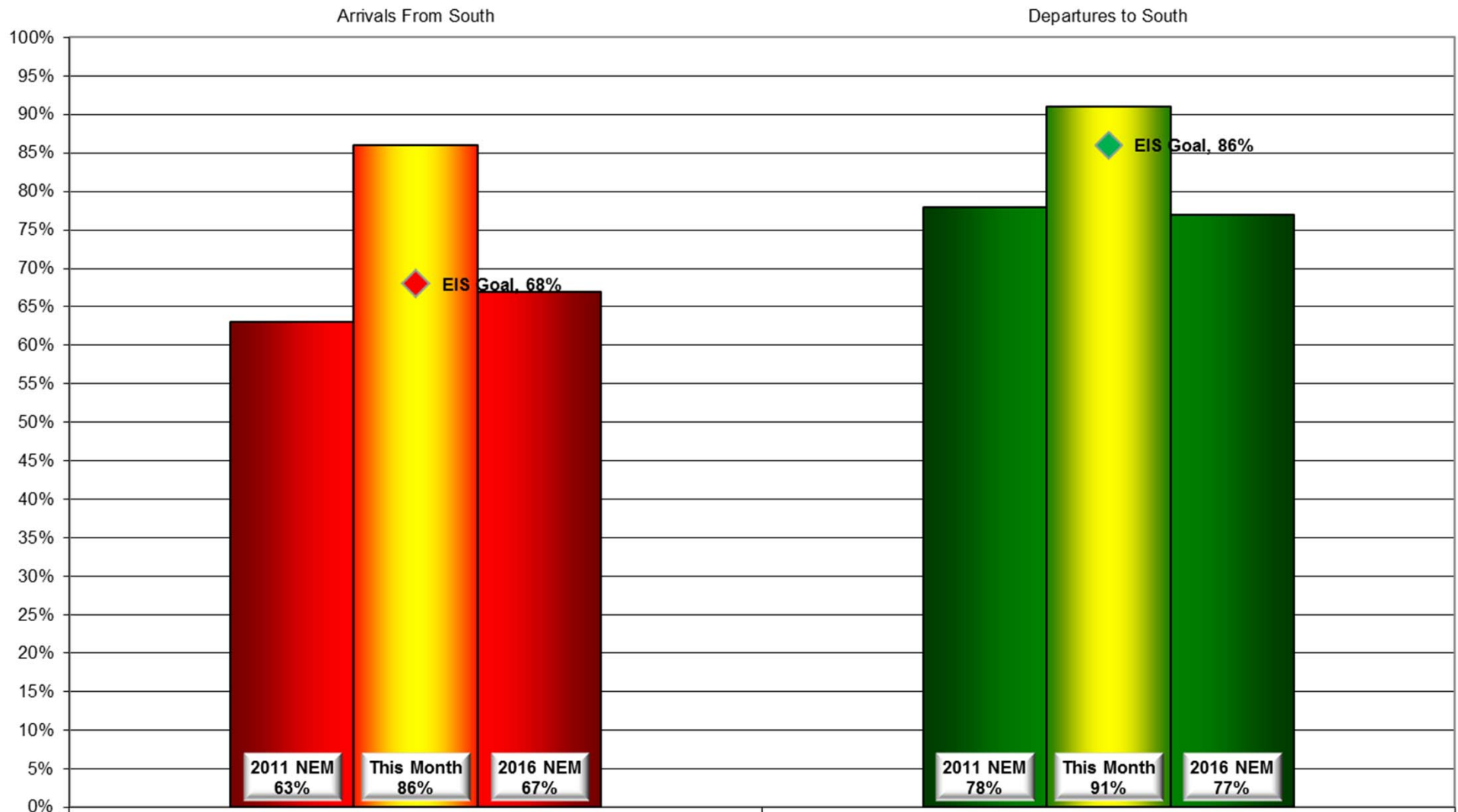
		% of all arrivals from the south										% of all departures to the south									
Date	Day	* in compliance	Runway #						Unknown Runway Use	Notes / Comments		** in compliance	Runway #						Unknown Runway Use	Notes / Comments	
			11	17L	17R	29	35L	35R					11	17L	17R	29	35L	35R			
07/01/15	Wed	100%						62	38	0		85%			38	47		10	5	0	170-250@3-9knts,RA
07/02/15	Thu	98%			2			62	36	0		95%			36	59		4	1	0	
07/03/15	Fri	88%			4	8		85	3	0		100%			15	85				0	
07/04/15	Sat																				
07/05/15	Sun																				
07/06/15	Mon	91%			7	2		52	39	0		95%			37	58		3	2	0	
07/07/15	Tue	1%			44	55		1		0	120-220@5-13knts,G19,RA	37%			9	28		32	31	0	230-350@3-9knts,RA
07/08/15	Wed	11%			37	52		6	5	0	130-160@5-8knts	99%			38	61			1	0	
07/09/15	Thu	61%			14	25		35	26	0	290-360@4-7knts	96%			34	62		2	2	0	
07/10/15	Fri	89%			5	6		55	34	0		97%			42	55		1	2	0	
07/11/15	Sat																				
07/12/15	Sun																				
07/13/15	Mon	6%			41	53		6		0	170-220@7-11knts	83%			29	54		12	5	0	
07/14/15	Tue	98%			1	1		61	37	0		4%			1	3		50	46	0	350-010@3-11knts
07/15/15	Wed	96%			1	3		58	38	0		95%			38	57		3	2	0	
07/16/15	Thu	89%			7	4		59	30	0		94%			34	60		2	4	0	
07/17/15	Fri	25%			27	48		17	8	0	190-040@6-24,G34,TSRA	95%			40	55		3	2	0	
07/18/15	Sat																				
07/19/15	Sun																				
07/20/15	Mon	0%			47	53				0	210-250@4-19knts,G25,TSF	100%			35	65				0	
07/21/15	Tue	89%			5	6		52	37	0		15%			7	8		51	34	0	360-010@3-8knts
07/22/15	Wed	95%			4	1		55	40	0		92%			37	55		4	4	0	
07/23/15	Thu	99%				1		59	40	0		96%			35	61		2	2	0	
07/24/15	Fri	88%			8	4		57	31	0		99%			39	60		1		0	
07/25/15	Sat																				
07/26/15	Sun																				
07/27/15	Mon	91%			8	1		56	35	0		93%			33	60		4	3	0	
07/28/15	Tue	94%			5	1		57	37	0		92%			42	50		6	2	0	
07/29/15	Wed	100%						58	42	0		1%			1			53	46	0	310-340@4-14knts,G19
07/30/15	Thu	98%			1	1		56	42	0		91%			31	60		4	5	0	
07/31/15	Fri	94%			2	4		55	39	0		97%			44	53		1	2	0	

Preferred Flow

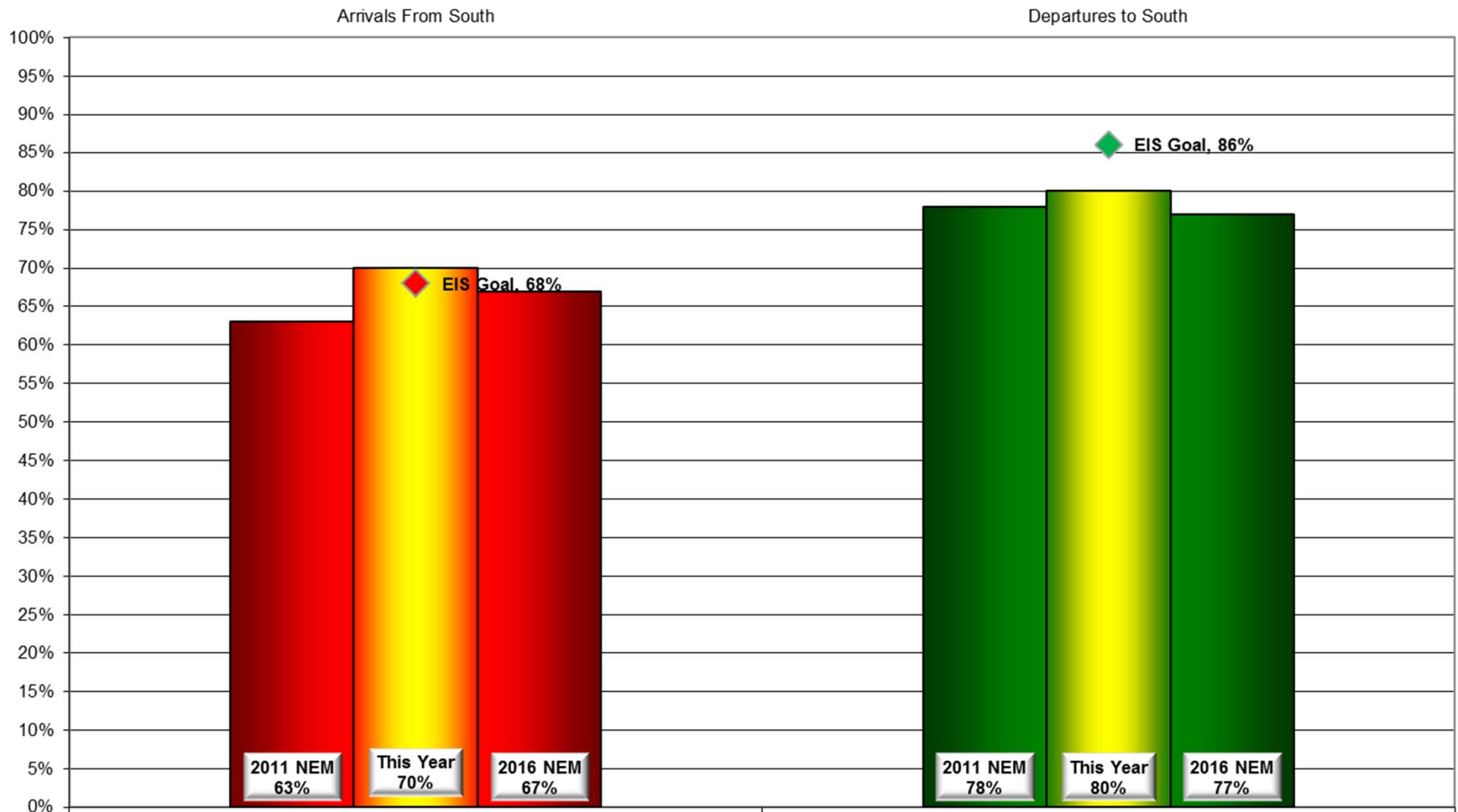
DATIS Reported Conditions Indicate
Support for Non-Preferred Flow

DATIS Reported Conditions Do Not Indicate
Support for Non-Preferred Flow

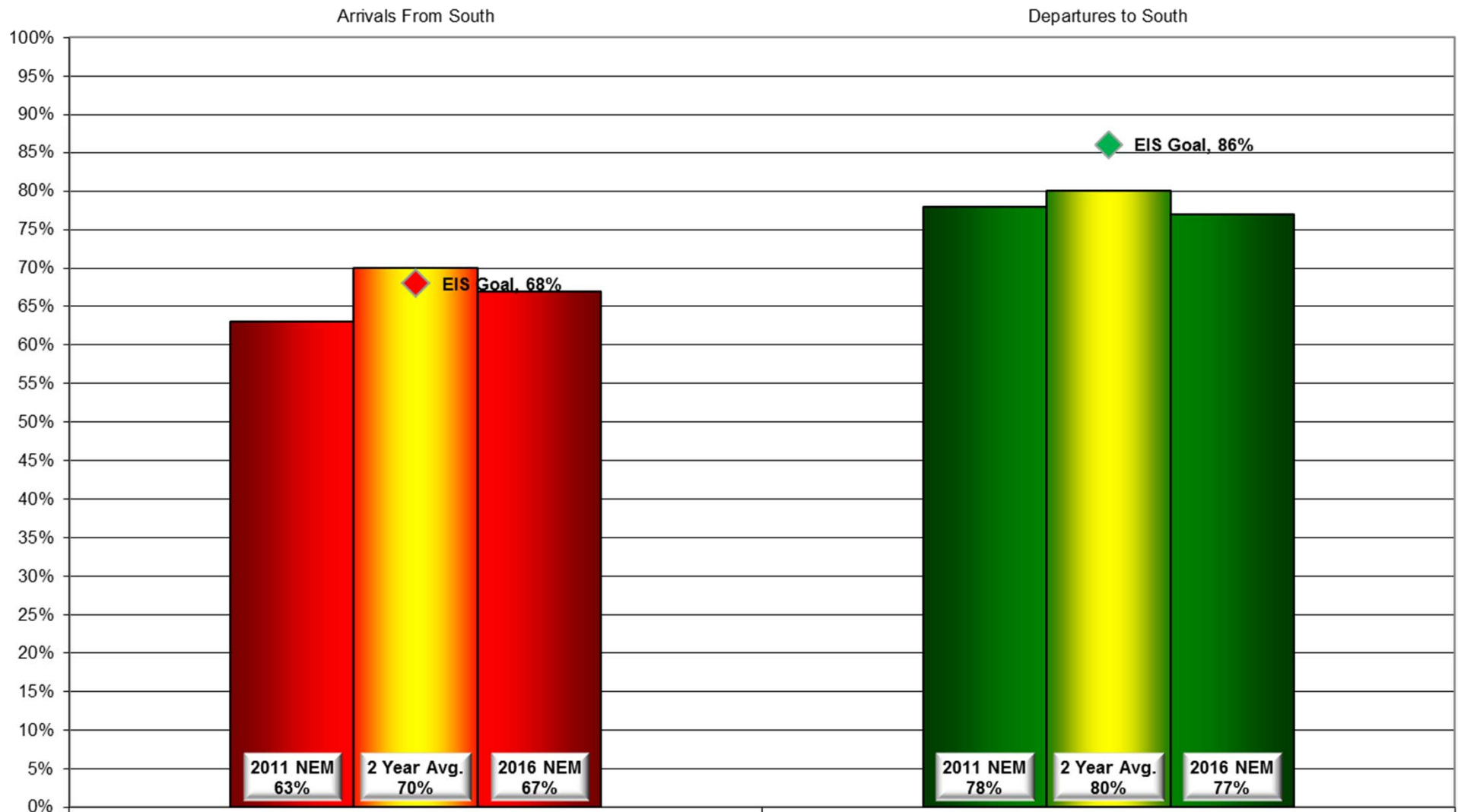
Monthly Contraflow August 1-31, 2015



Contraflow This Year As of September 4, 2015



Contraflow 2 Year Average September 2013 - August 2015



Year-to-Year by Month Percent* Contraflow

Arrivals From the South (Goal 68%)										Departures to the South (Goal 86%)									
	2008	2009	2010	2011	2012	2013	2014	2015	Avg		2008	2009	2010	2011	2012	2013	2014	2015	Avg
Jan	50%	63%	94%	91%	62%	72%	51%	76%	70%	Jan	80%	74%	54%	71%	80%	65%	81%	76%	73%
Feb	50%	49%	90%	73%	69%	77%	72%	66%	68%	Feb	74%	81%	71%	63%	74%	78%	71%	76%	74%
Mar	52%	46%	80%	52%	61%	87%	60%	71%	64%	Mar	68%	67%	82%	72%	96%	77%	77%	66%	76%
Apr	44%	53%	57%	47%	78%	60%	67%	53%	57%	Apr	92%	84%	84%	83%	76%	89%	83%	77%	84%
May	66%	66%	56%	69%	72%	46%	60%	75%	64%	May	78%	84%	87%	85%	81%	85%	92%	80%	84%
Jun	38%	72%	66%	61%	79%	76%	75%	57%	66%	Jun	93%	81%	96%	93%	87%	80%	91%	91%	89%
Jul	75%	72%	61%	91%	62%	74%	79%	74%	74%	Jul	84%	82%	90%	88%	92%	88%	85%	80%	86%
Aug	92%	61%	59%	82%	49%	84%	61%	86%	72%	Aug	77%	96%	92%	91%	91%	92%	92%	91%	90%
Sep	91%	89%	70%	85%	55%	86%	85%		80%	Sep	73%	82%	73%	64%	92%	87%	86%		81%
Oct	76%	42%	80%	88%	62%	87%	75%		71%	Oct	77%	71%	78%	63%	78%	89%	79%		75%
Nov	66%	74%	85%	55%	84%	73%	78%		72%	Nov	74%	73%	77%	72%	81%	83%	62%		75%
Dec	58%	71%	67%	70%	64%	58%	78%		65%	Dec	62%	65%	78%	65%	67%	71%	68%		69%
Avg	63%	63%	72%	72%	66%	73%	70%	70%		Avg	78%	78%	80%	76%	83%	82%	81%	80%	

*Number is percentage of all operations between 10:00 PM - 7:00 AM

Daily Runway Use Summary - August 2015

(from 10:00 PM date list in first column to 7:00 AM the following morning)

		% of all arrivals from the south										% of all departures to the south									
Date	Day	* in compliance	Runway #						Unknown Runway Use	Notes / Comments		** in compliance	Runway #						Unknown Runway Use	Notes / Comments	
			11	17L	17R	29	35L	35R					11	17L	17R	29	35L	35R			
08/03/15	Mon	98%			2			60	38	0		92%			40	52		6	2	0	
08/04/15	Tue	91%			5	4		50	41	0		93%			46	47		5	2	0	
08/05/15	Wed	95%			4	1		57	38	0		95%			42	53		4	1	0	
08/06/15	Thu	99%			1			57	42	0		88%			33	55		5	7	0	
08/07/15	Fri	90%			8	2		59	31	0		97%			33	64		3		0	
08/08/15	Sat																				
08/09/15	Sun																				
08/10/15	Mon	91%			8	1		52	39	0		93%			36	57		4	3	0	
08/11/15	Tue	98%			2			60	38	0		91%			35	56		6	3	0	
08/12/15	Wed	5%			38	57		3	2	0	360-010@3-6knts	100%			40	60				0	
08/13/15	Thu	99%			1			62	37	0		96%			37	59		3	1	0	
08/14/15	Fri	89%			9	2		50	39	0		97%			39	58		2	1	0	
08/15/15	Sat																				
08/16/15	Sun																				
08/17/15	Mon	85%			11	4		51	34	0		93%			36	57		5	2	0	
08/18/15	Tue	92%			6	2		57	35	0		93%			34	59		1	6	0	
08/19/15	Wed	17%			41	42		13	4	0	210-300@4-13knts,G19,RA	24%			6	18		34	42	0	260-300@6-13knts
08/20/15	Thu	98%				2		56	42	0		91%			36	55		5	4	0	
08/21/15	Fri	91%			5	4		59	32	0		98%			36	62		2		0	
08/22/15	Sat																				
08/23/15	Sun																				
08/24/15	Mon	97%			2	1		56	41	0		94%			37	57		2	4	0	
08/25/15	Tue	98%			2			60	38	0		92%			42	50		4	4	0	
08/26/15	Wed	98%			2			64	34	0		94%			40	54		3	3	0	
08/27/15	Thu	95%			3	2		59	36	0		93%			39	54		6	1	0	
08/28/15	Fri	86%			10	4		58	28	0		97%			38	59		3		0	
08/29/15	Sat																				
08/30/15	Sun																				
08/31/15	Mon	97%			2	1		58	39	0		91%			43	48		5	4	0	

Preferred Flow

DATIS Reported Conditions Indicate
Support for Non-Preferred Flow

DATIS Reported Conditions Do Not Indicate
Support for Non-Preferred Flow



***LOUISVILLE
REGIONAL
AIRPORT
AUTHORITY®***

NOISE COMMENT REPORT
July 2015

Comments (SDF/LOU)

July 2015

Street	Zip Code	Time Received	Time	Airport	Disturbance Type	CNF Quad	Status	Operation or Comment Type ¹	Deviation Type ²	Comments
Reading Rd	40217	2015-07-14 10:56:46	2015-07-14 10:56:46	SDF	Other	NE	Investigated	LQHP	NONE	I am inquiring to see if my home is eligible. Quite a few of my neighbor's homes have been fixed up lately.
Audubon Pkwy	40213	2015-07-15 10:56:46	2015-07-15 10:56:46	SDF	Other	NE	Investigated	LQHP	None	Homeowner called to inquire about the program.
Rawlings St	40217	2015-07-17 10:56:46	2015-07-17 10:56:46	SDF	Other	NE	Investigated	LQHP	None	I am emailing to ask if we are in the coverage area for the quieter home program. The airplanes literally go between our home and our neighbors. I woke up 3 nights ago thinking one was going to crash into our home. The windows rattle in the house, and if we are on the phone we have to pause for a moment while the plane passes.
S Shelby St	40217	2015-07-22 10:56:46	2015-07-22 10:56:46	SDF	Other	NE	Investigated	LQHP	None	Homeowner came to the project house to see about getting into the program.
S Preston St	40217	2015-07-24 10:56:46	2015-07-24 10:56:46	SDF	Other	NE	Investigated	LQHP	None	Homeowner called to see if home is eligible for the new windows.
Raven Rd	40213	2015-07-24 11:00:00	2015-07-24 11:00:00	SDF	Other	NE	Investigated	LQHP	None	Homeowner called to see about being in the program.

1. **Standard:** Indicates the "Most Preferred" runway configuration was being utilized at the time of the comment.
Non Standard: Indicates that a "Lesser Preferred" runway configuration was being utilized at the time of the comment.
QHP: QuieterHome Program

2. This column is used to indicate the conditions which most likely necessitated a deviation from the standard procedures.

Comments (SDF/LOU)

July 2015

Street	Zip Code	Time Received	Time	Airport	Disturbance Type	CNF Quad	Status	Operation or Comment Type ¹	Deviation Type ²	Comments
Eastern Pkwy	40217	2015-07-28 11:00:00	2015-07-28 11:00:00	SDF	Other	NE	Investigated	LQHP	None	Homeowner called because he wanted to know more about the program. He said he does not have central AC and so the planes are keeping him awake with his windows open.
							Received	LQHP	8	
Minoma Ave	40217	2015-07-01 15:23:01	2015-07-01 15:23:01	SDF	Vibrations	NE	Investigated	Standard	None	We're 4 houses from Alexander Avenue. Our windows rattle, our plaster cracks and planes fly low over our house constantly, yet we're told the cut-off for any noise reduction is just west of Alexander. This should be revisited and revisited soon. Our house was in perfect shape when we moved in. Once the planes started, our plaster started cracking. Your adjuster told us it's the house settling. Now really...the house would have settled way before your planes started shaking our windows. We need some relief from this noise pollution.

1. **Standard:** Indicates the "Most Preferred" runway configuration was being utilized at the time of the comment.
Non Standard: Indicates that a "Lesser Preferred" runway configuration was being utilized at the time of the comment.
QHP: QuieterHome Program

2. This column is used to indicate the conditions which most likely necessitated a deviation from the standard procedures.

Comments (SDF/LOU)

July 2015

Street	Zip Code	Time Received	Time	Airport	Disturbance Type	CNF Quad	Status	Operation or Comment Type ¹	Deviation Type ²	Comments
Keswick Blvd	40217	2015-07-08 14:49:41	2015-07-08 14:49:41	SDF	Constant Noise	NE	Investigated	Standard	None	The planes come right over my house. Actually, I save on LG&E because I can read a book at night in my living room when they come over non-stop. The lights on the front of planes shine right on my pages. I grew up on McKinley so I am used to the noise. When my husband and I purchased the house in 1983 we knew we would have it!! Over the years though we heard they were going to re-route them and I got excited. In my old age and my inner problem with my ear, every little noise is compounded. I spoke to Bob Slattery 1:00 AM about 6 months ago over the phone when I was home just because I couldn't sleep and he actually heard them. Well I talked to someone else and he said he would have him call the next day. I thought heck no, he will never call back!! But he did!!! It was a shock! Both guys were the nicest people and it was a pleasure to talk to them. So to make a long story short, I will or we will never be able to afford windows on our own so I would like to be added to the list of lists (tehe) and hopefully someday we can get help with our windows from the airport like other people. Thanks for reading my messy letter.
S. 2nd ST	40214	2015-07-17 01:22:54	2015-07-17 01:00:54	SDF	Noise At Wrong Time	SW	Investigated	Standard	None	In the last minute or so we have UPS planes going over our house. It is 1:17 or 1:18 AM. Give me a call back one way or another. I want this documented. There is not even a breeze blowing. No reason for it.

1. **Standard:** Indicates the "Most Preferred" runway configuration was being utilized at the time of the comment.
Non Standard: Indicates that a "Lesser Preferred" runway configuration was being utilized at the time of the comment.
QHP: QuieterHome Program

2. This column is used to indicate the conditions which most likely necessitated a deviation from the standard procedures.

Comments (SDF/LOU)

July 2015

Street	Zip Code	Time Received	Time	Airport	Disturbance Type	CNF Quad	Status	Operation or Comment Type ¹	Deviation Type ²	Comments
Denham RD	40205	2015-07-17 09:30:19	2015-07-17 09:30:19	LOU	Aircraft Off Course	NE	Investigated	Standard	None	Flights are going over my house on Denham that have not gone over it before. For the past 6 months it appears that you have changed the flight pattern. It used to be nice and quiet and now they fly different and it is louder and threatening. I spoke with FSDO and they said the planes were within the flight rules. I am primarily concerned with departures turning at the end of the runway. I like to work in the garden and on Saturdays and Sundays it is worse. I will send you pictures of the word "crash" that a skywriter wrote right over my house.
Idylewild Dr	40165	2015-07-22 10:30:15	2015-07-22 10:00:15	SDF	Aircraft Too Low	SE	Investigated	Standard	None	I live 8 miles south of the airport. I am concerned about the low flying planes and noise for the last couple of days. The planes have just been flying exceptionally low.
Glenafton Ln	40217	2015-07-27 13:08:00	2015-07-26 20:30:53	SDF	Too Much Noise	NE	Investigated	Standard	None	I am calling about the noise from the airport. Things started getting worse about a year ago. My kids keep getting woke up by airplanes. Recently we had a picture come off the shelf because of the vibration. Last night at about 9:00 PM we had a Southwest airplane go over that was really close.
Eastern Pkwy	40217	2015-07-28 10:16:30	2015-07-28 10:16:30	SDF	Too Much Noise	NE	Investigated	Standard	None	I have been having trouble sleeping lately because I do not have central air-conditioning and have to leave my windows open. I would like to know if you could put a dnl machine in this area.
Glenafton Ln	40217	2015-07-29 09:00:41	2015-07-28 23:00:41	SDF	Too Much Noise	NE	Investigated	Standard	None	I need you to check on the noise for me for last night at about 11:20 PM to 11:40 PM and again at about 3:00 AM this morning.

1. **Standard:** Indicates the "Most Preferred" runway configuration was being utilized at the time of the comment.
Non Standard: Indicates that a "Lesser Preferred" runway configuration was being utilized at the time of the comment.
QHP: QuieterHome Program

2. This column is used to indicate the conditions which most likely necessitated a deviation from the standard procedures.

Comments (SDF/LOU)

July 2015

Street	Zip Code	Time Received	Time	Airport	Disturbance Type	CNF Quad	Status	Operation or Comment Type ¹	Deviation Type ²	Comments
Manchester	40205	2015-07-29 12:58:27	2015-07-29 11:00:27	LOU	Too Much Noise	NE	Investigated	Standard	None	I am calling about the noise at Bowman Field. You and I spoke about a year and a half ago. Today for example, I don't know if they are trying to save fuel and they don't want to make a larger pattern but it feels like the planes have just been hovering. I don't mind the takeoff and the landing but when they continually fly around in very tight circles the noise is just relentless and constant. It might not be as loud as some planes from the international airport but it is just relentless. And I believe that they are supposed to make a wider circle. If you can give me a call I would just like to register a complaint.
Glenafon Ln	40217	2015-07-31 17:23:45	2015-07-31 17:00:45	SDF	Noise At Wrong Time	NE	Investigated	Non-Standard	Weather	In the last 10 minutes we have had 3 planes fly almost directly over our house. I am not sure why that is happening. If you could look into that, we would appreciate it.
							Received	LRAA	10	




1. **Standard:** Indicates the “Most Preferred” runway configuration was being utilized at the time of the comment.
Non Standard: Indicates that a “Lesser Preferred” runway configuration was being utilized at the time of the comment.
QHP: QuieterHome Program

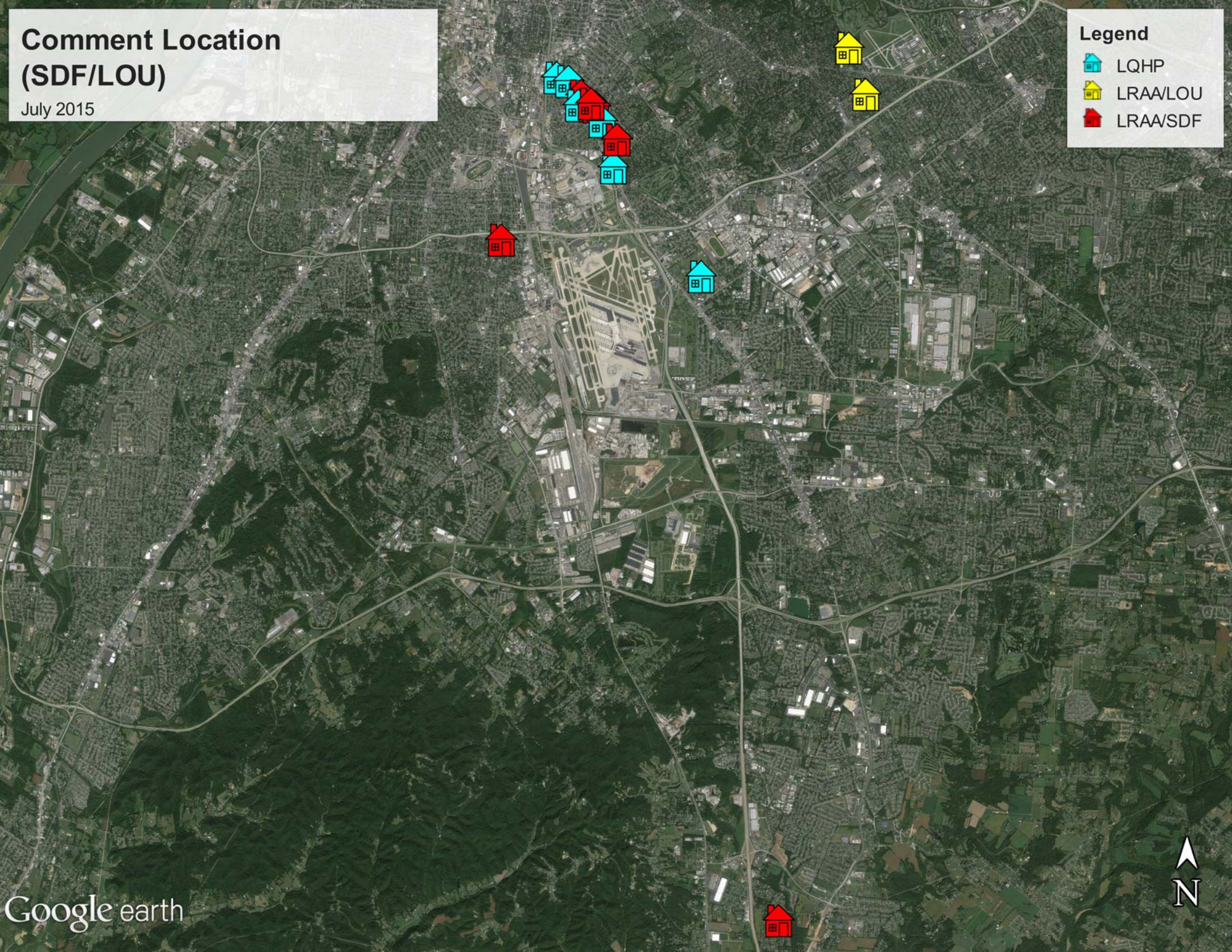
2. This column is used to indicate the conditions which most likely necessitated a deviation from the standard procedures.

Comment Location (SDF/LOU)

July 2015

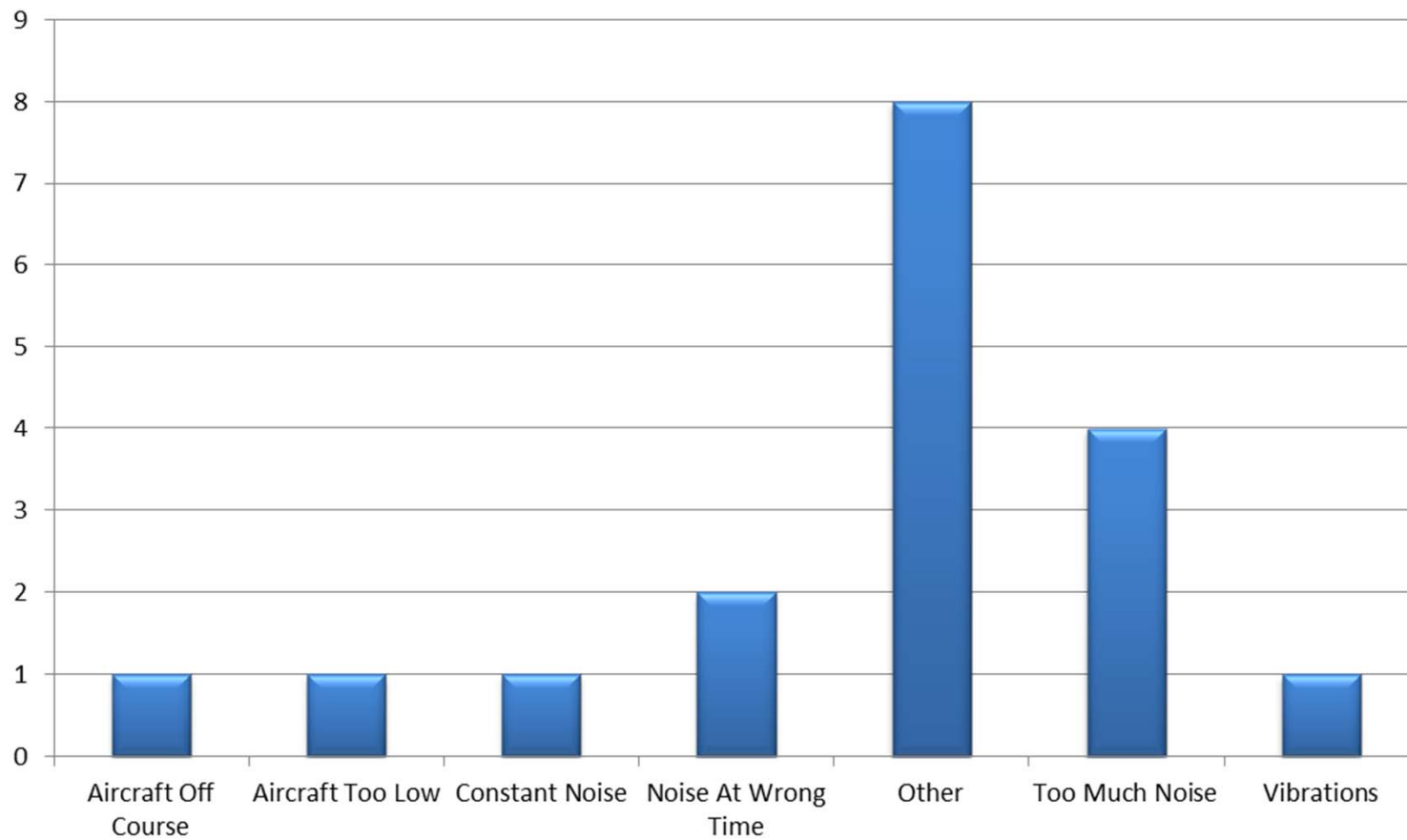
Legend

-  LQHP
-  LRAA/LOU
-  LRAA/SDF



Comment Type* (SDF and LOU)

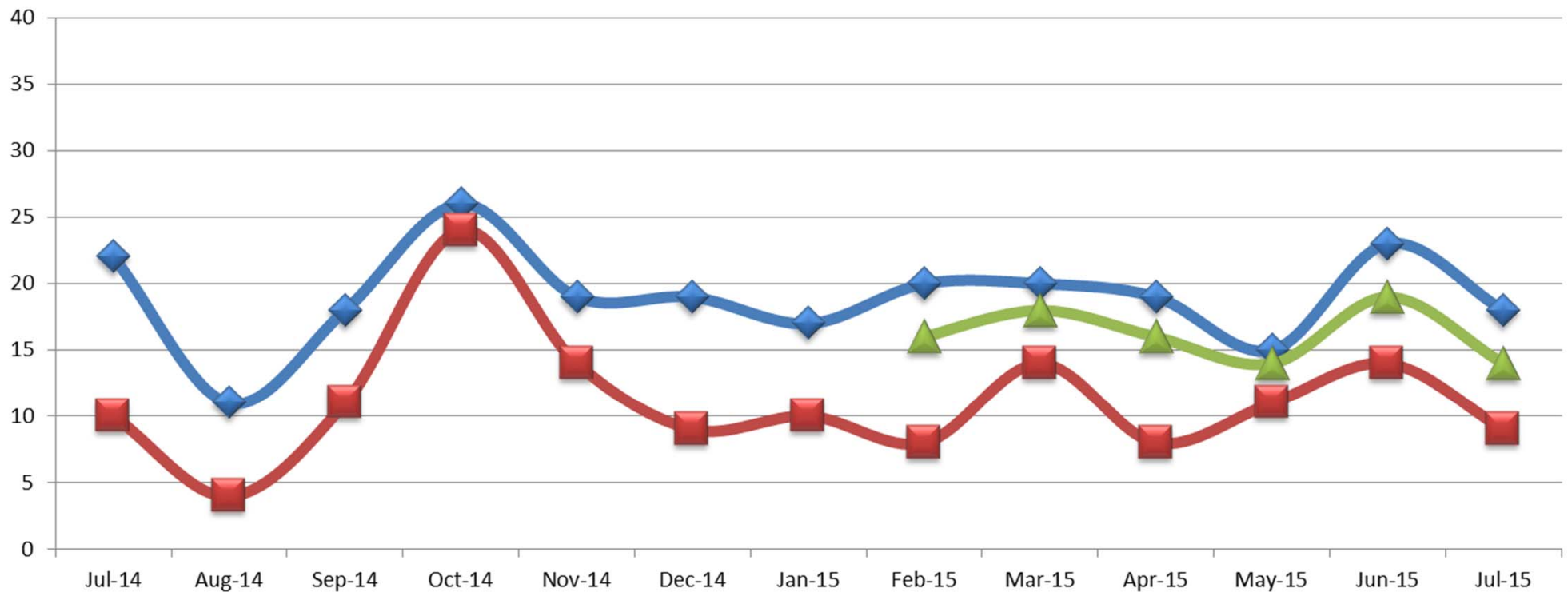
July 2015



New Address/Comments per Month (SDF and LOU)

July 2015

◆ Total Comments ■ New Callers ▲ Individual Callers





***LOUISVILLE
REGIONAL
AIRPORT
AUTHORITY®***

NOISE COMMENT REPORT
August 2015

Comments (SDF/LOU)

August 2015

Street	Zip Code	Time Received	Time	Airport	Disturbance Type	CNF Quad	Status	Operation or Comment Type ¹	Deviation Type ²	Comments
Fetter Ave	40217	2015-08-05 11:28:30	2015-08-05 11:28:30	SDF	Other	NE	Investigated	LQHP	None	I would like to have my home soundproofed.
Brown Austin Rd	40118	2015-08-06 11:28:30	2015-08-06 11:28:30	SDF	Other	SW	Investigated	LQHP	None	I am trying to find out if my home qualifies for the program.
Bobolink Rd	40217	2015-08-07 11:28:30	2015-08-07 11:35:30	SDF	Other	NE	Investigated	LQHP	None	Homeowner called to see if his home was part of the program. He said that the planes fly right over his head all the time.
S 2nd St	40208	2015-08-10 11:28:30	2015-08-10 11:35:30	SDF	Other	NW	Investigated	LQHP	None	Homeowner came in and asked about the program. He just bought this house and wanted to know how we could help with the noise.
Eastern Pkwy	40217	2015-08-14 11:28:30	2015-08-14 11:35:30	SDF	Other	NE	Investigated	LQHP	None	Can you let me know if I qualify for this program please?
Belmar Dr	40213	2015-08-18 09:28:30	2015-08-18 09:28:30	SDF	Other	NE	Investigated	LQHP	None	Realtor called to see if this property was in the program.
Linnet Rd	40213	2015-08-18 11:28:30	2015-08-18 10:28:30	SDF	Other	NE	Investigated	LQHP	None	Homeowner has a friend on Wirth that is in the program and wanted to see if he qualified.
Louisa Ave	40217	2015-08-19 09:28:30	2015-08-19 09:28:30	SDF	Other	NE	Investigated	LQHP	None	Homeowner called to see if the property was in the boundary for the program. They were told about it from a neighbor.

1. **Standard:** Indicates the “Most Preferred” runway configuration was being utilized at the time of the comment.
Non Standard: Indicates that a “Lesser Preferred” runway configuration was being utilized at the time of the comment.
QHP: QuieterHome Program

2. This column is used to indicate the conditions which most likely necessitated a deviation from the standard procedures.

Comments (SDF/LOU)

August 2015

Street	Zip Code	Time Received	Time	Airport	Disturbance Type	CNF Quad	Status	Operation or Comment Type ¹	Deviation Type ²	Comments
Parklawn Dr	40217	2015-08-21 09:26:23	2015-08-21 09:26:23	SDF	Other	NE	Investigated	LQHP	None	Homeowner came to the project house and said she heard that there was a deadline for the program. She wanted to see if she could get new windows for her home before it ended.
Roosevelt Ave	40213	2015-08-24 09:26:23	2015-08-24 09:26:23	SDF	Other	NE	Investigated	LQHP	None	Homeowner called to ask about being in the program. He also asked about where he can send a complaint in regards to a crack in his window that is caused by the airplanes.
Hickman Ave	40213	2015-08-24 10:05:26	2015-08-24 10:05:26	SDF	Other	NE	Investigated	LQHP	None	As I'm sure you are already aware we get a lot of noise from the airport during certain parts of the day. Several of my windows now have a rattle from the noise increasing over the last several months. I don't know why it has been getting worse, but I would like to find out if my house fits the requirements for the Quieter Home Program. There are several times at night that I awaken due to plane noise and that's with my earplugs in and the windows closed. There has always been severe plane noise, but it just seems more unbearable than before. Please let me know what I can do to possibly be enrolled in this program. I have a 19-month old son that also has had interrupted sleep patterns the last several months due to the elevated noise.
Compton St	40208	2015-08-28 10:05:15	2015-08-28 10:05:15	SDF	Other	NW	Investigated	LQHP	None	I wanted to contact you to see if my house was available for the Quieter Home program. Please let me know if there is anything that I qualify for.

1. **Standard:** Indicates the "Most Preferred" runway configuration was being utilized at the time of the comment.
Non Standard: Indicates that a "Lesser Preferred" runway configuration was being utilized at the time of the comment.
QHP: QuieterHome Program

2. This column is used to indicate the conditions which most likely necessitated a deviation from the standard procedures.

Comments (SDF/LOU)

August 2015

Street	Zip Code	Time Received	Time	Airport	Disturbance Type	CNF Quad	Status	Operation or Comment Type ¹	Deviation Type ²	Comments
Clarks Ln	40217	2015-08-31 10:05:15	2015-08-31 10:05:15	SDF	Other	NE	Investigated	LQHP	None	Homeowner called and said she heard about our program and wanted to see if she qualified.
Mayer Ave	40217	2015-08-31 10:40:15	2015-08-31 10:40:15	SDF	Other	NE	Investigated	LQHP	None	Homeowner called to inquire about eligibility. He said that his tenant had said there was something in a newsletter about possibly being eligible because the airport was expanding.
							Received	LQHP	14	
Glenafon Ln	40217	2015-08-06 09:00:59	2015-08-04 15:30:59	SDF	Noise At Wrong Time	NE	Investigated	Non-Standard	Weather	On Tuesday, August 2, the planes were taking off to the north for quite a while.
Pindell Ave	40217	2015-08-06 10:16:29	2015-08-06 10:00:29	SDF	Constant Noise	NE	Investigated	Non-Standard	Weather	I had mentioned that there was a loud hum or noise coming from the airport direction. Well it is happening today and it is about 10:15 AM. It is really loud and it dies down a little bit and gets really loud again. I am in my house with the TV on and I can still hear it. You might want to check that out.
Holsclaw Hill Rd	40118	2015-08-07 12:12:05	2015-08-07 12:12:05	SDF	Too Much Noise	SW	Investigated	Standard	None	I would like to talk to you about some planes that are flying their flight pattern over the Holsclaw Hill and Jefferson Memorial Forest area. I have had some issues with some of the folks there and want to see if we can try to alleviate that.
Glenafon Ln	40217	2015-08-11 17:08:11	2015-08-11 16:45:11	SDF	Noise At Wrong Time	NE	Investigated	Non-Standard	Weather	I am calling to see why we had some planes flying over. Wanted to see why they are doing that. The wind does not seem to be blowing very hard.

1. **Standard:** Indicates the “Most Preferred” runway configuration was being utilized at the time of the comment.
Non Standard: Indicates that a “Lesser Preferred” runway configuration was being utilized at the time of the comment.
QHP: QuieterHome Program

2. This column is used to indicate the conditions which most likely necessitated a deviation from the standard procedures.

Comments (SDF/LOU)

August 2015

Street	Zip Code	Time Received	Time	Airport	Disturbance Type	CNF Quad	Status	Operation or Comment Type ¹	Deviation Type ²	Comments
Mt Holly Rd	40118	2015-08-12 09:49:00	2015-08-12 03:00:06	SDF	Constant Noise	SW	Investigated	Standard	None	Just inquiring about the UPS planes in the morning. It sounds like they are bombarding my house.
Glenafton Ln	40217	2015-08-12 20:42:26	2015-08-12 20:39:26	SDF	Noise At Wrong Time	NE	Investigated	Non-Standard	Weather	At 8:39 PM a UPS plane departed to the northeast.
Deans St	40165	2015-08-13 10:46:21	2015-08-13 04:00:21	SDF	Too Much Noise	SW	Investigated	Standard	None	My complaint is that airplanes flying over my house cast a shadow in my kitchen window. They are always flying over and we don't get much sleep. It is especially bad from about 4 to 5 in the morning.
Cardinal Dr	40213	2015-08-20 16:39:47	2015-08-20 03:00:47	SDF	Too Much Noise	NE	Investigated	Non-Standard	Weather	I live in Audubon Park and I was just calling about the noise from the planes. I have been up since 3:00 AM this morning. Just thought you all might be aware of it. I don't know if it is winds or whatever is going on but I felt like someone needed to know that it was unbearable last night.

1. **Standard:** Indicates the "Most Preferred" runway configuration was being utilized at the time of the comment.
Non Standard: Indicates that a "Lesser Preferred" runway configuration was being utilized at the time of the comment.
QHP: QuieterHome Program

2. This column is used to indicate the conditions which most likely necessitated a deviation from the standard procedures.

Comments (SDF/LOU)

August 2015

Street	Zip Code	Time Received	Time	Airport	Disturbance Type	CNF Quad	Status	Operation or Comment Type ¹	Deviation Type ²	Comments
County Road 1385	40109	2015-08-18 20:18:20	2015-08-21 13:58:20	SDF	Aircraft Too Low	SW	Investigated	Standard	None	Are you still over the Noise compliance department? I remember talking to you a while back about aircraft noise over an area in Bullitt County by the Jefferson County line. I remember you saying that the noise maps are computer generated and that they reevaluate the areas every few years and to keep track of low flying aircraft. I have just found your email. Sorry for the delay but my computer crashed and I had to get a new one. I guess you can tell the altitude of the planes from the times. Really low aircraft flying over the subdivision of Orchard Brook. All these were flying really low, sounded like they were going to come through the house.
Twin Dr	40213	2015-08-24 17:32:03	2015-08-24 03:00:03	SDF	Vibrations	NE	Investigated	Standard	None	I live in the Camp Taylor neighborhood, and many times lately I have been woken up in the middle of the night by the UPS jet engines revving up (usually between 3 and 6 AM). Although the problem isn't as bad as it used to be (even made our windows rattle), we didn't hear it for a long stretch and now we do, and I'm wondering why.
Roosevelt Ave	40213	2015-08-24 16:35:48	2015-08-24 16:00:48	SDF	Vibrations	NE	Investigated	Non-Standard	Weather	I would like to know what kind of program you have in place to fix my window. My window has a crack and it is on the inside pane of glass. It started slowly last year and it is getting bigger. It is because of the vibration from the airplanes and I want to know what you are going to do about it.
							Received	LRAA	11	

1. **Standard:** Indicates the “Most Preferred” runway configuration was being utilized at the time of the comment.
Non Standard: Indicates that a “Lesser Preferred” runway configuration was being utilized at the time of the comment.
QHP: QuieterHome Program


2. This column is used to indicate the conditions which most likely necessitated a deviation from the standard procedures.

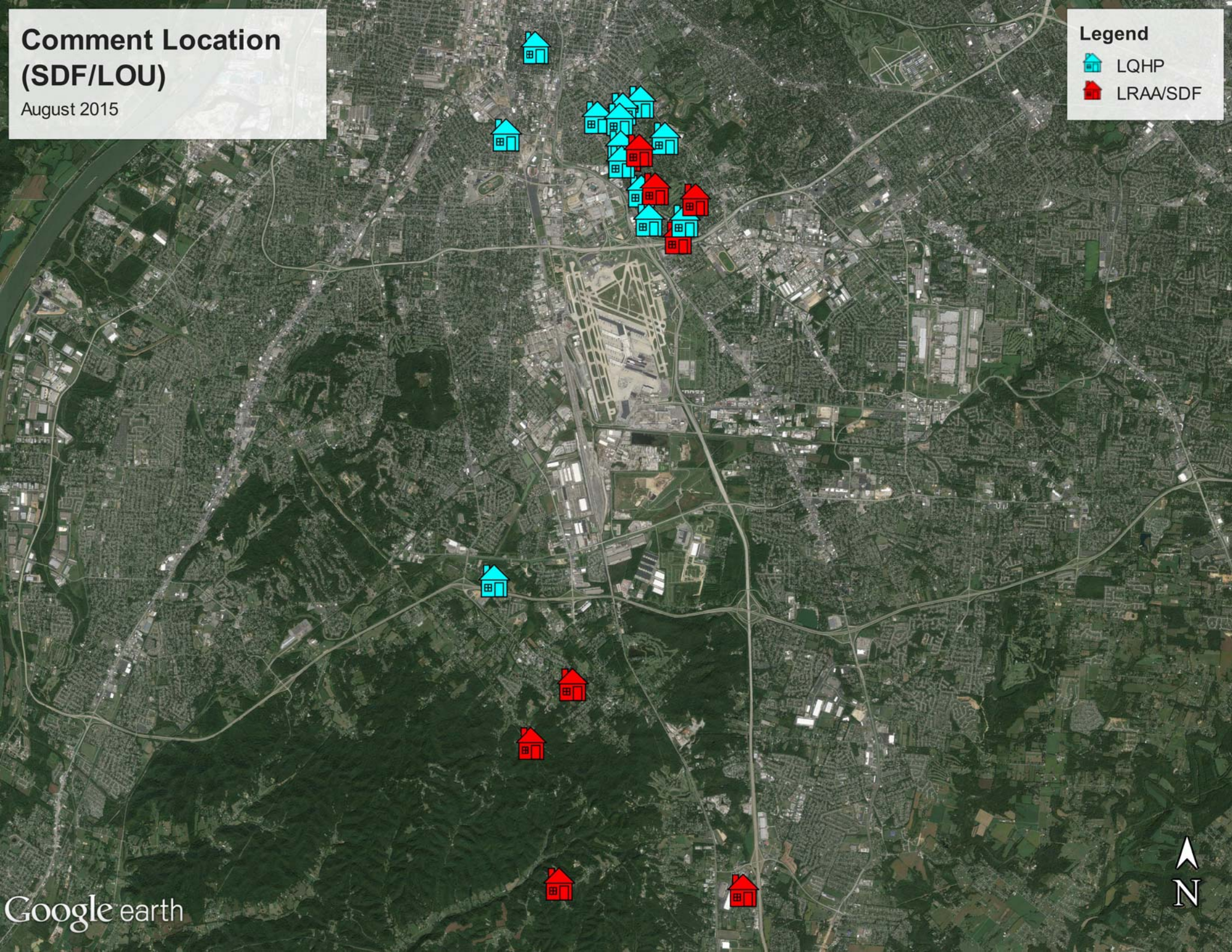
Comment Location (SDF/LOU)

August 2015

Legend

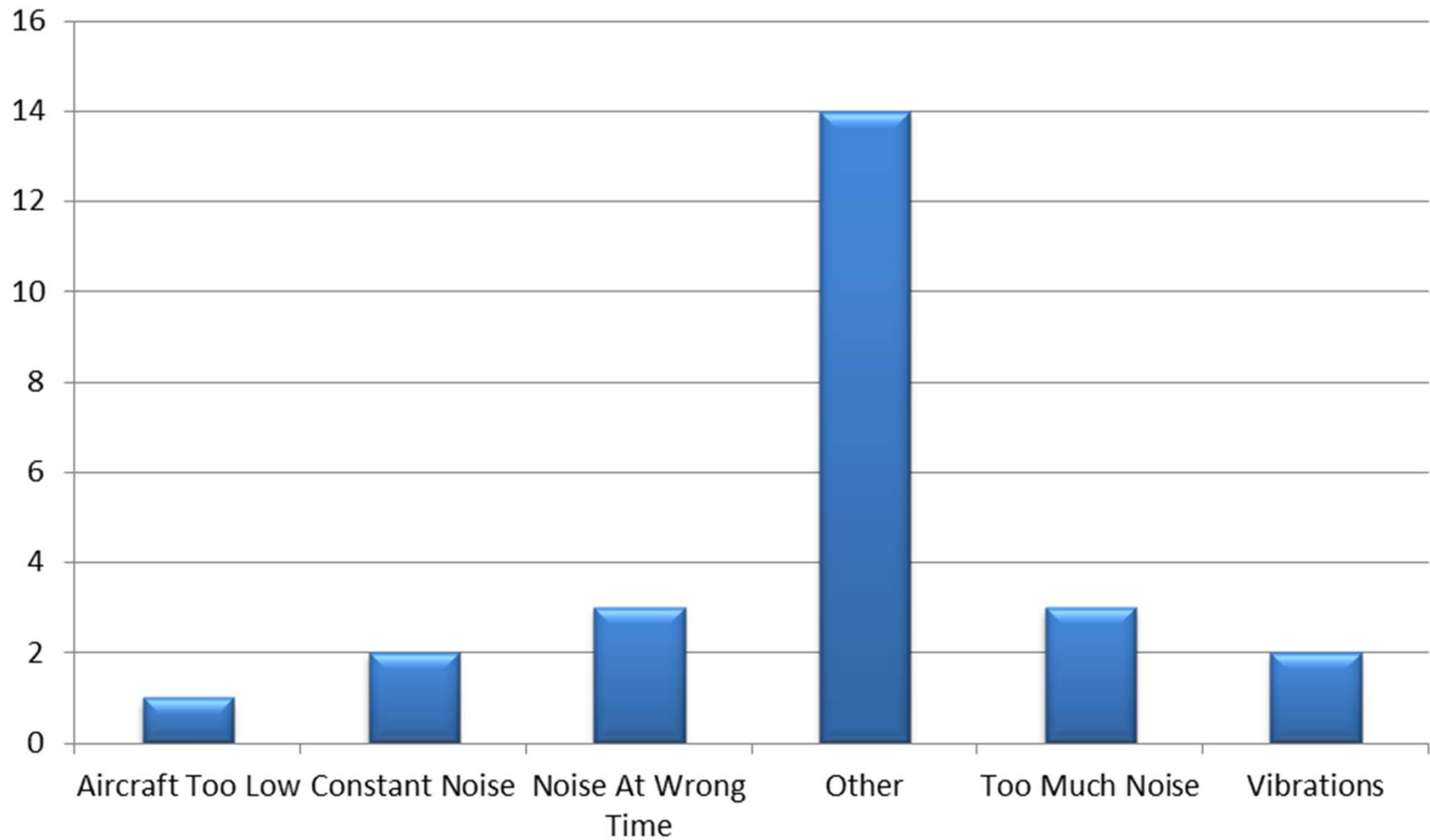
 LQHP

 LRA/SDF



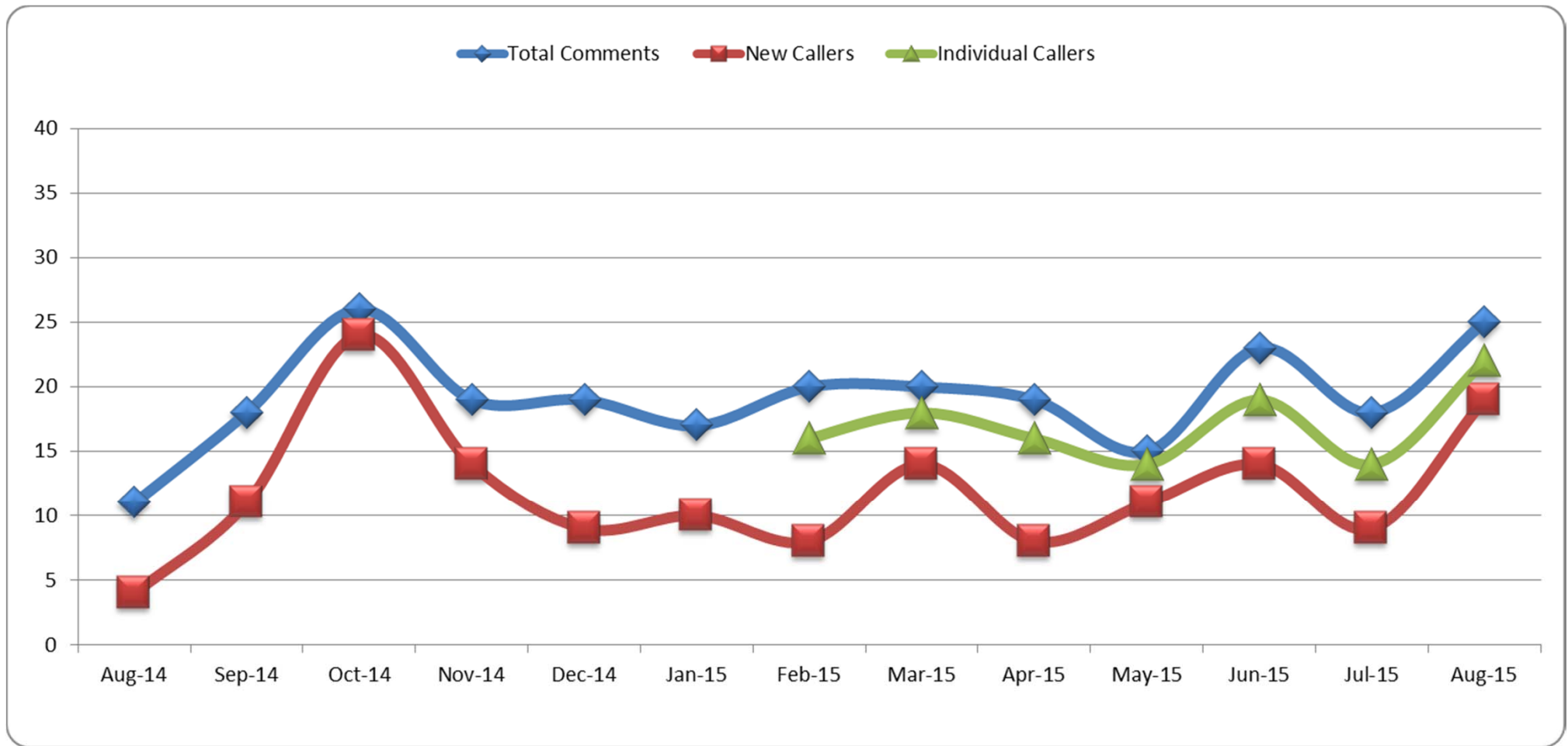
Comment Type* (SDF and LOU)

August 2015



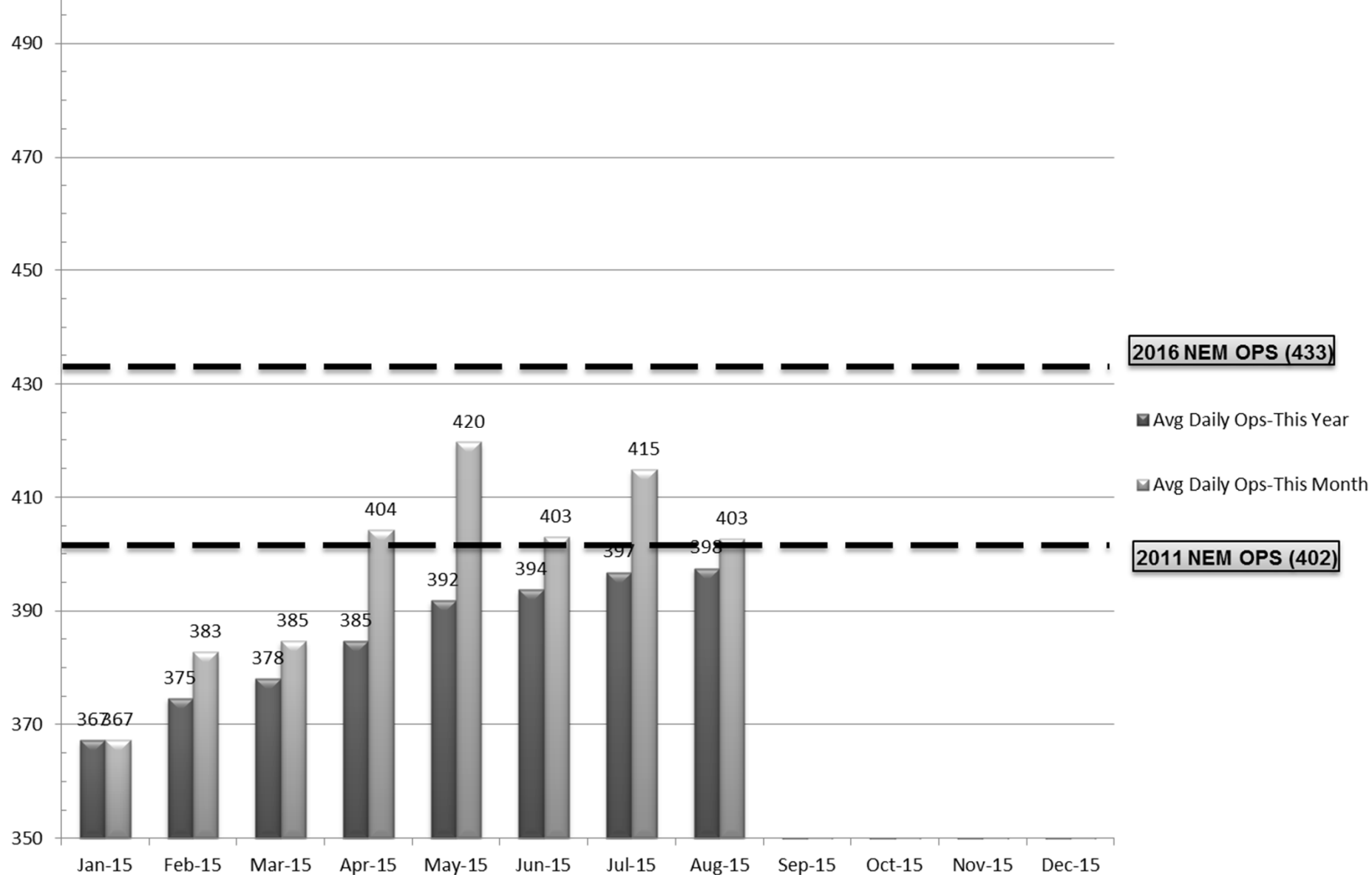
New Address/Comments per Month (SDF and LOU)

August 2015



Operations (SDF)

As of August 31, 2015



Source: Louisville <http://www.flylouisville.com/regional-airport-authority/reports-and-statistics/>

Daily Runway Use Uncorrected (SDF) July 2015

[illegible]

Daily Runway Use (SDF)

Tower Comments July 2015

Day	Date	Time	Comment
wed	1-Jul-15	0000-0230	Wind 1305 wet runways
wed	1-Jul-15	0800-0900	Flight check scheduled (but showed up late)
wed	1-Jul-15	1300-1430	Flight Check on 35R
wed	1-Jul-15	1600-2130	Wind 2807 wet runways
thu	2-Jul-15	0300-0700	Log shows south operation at 0316
thu	2-Jul-15	1800-1830	Wind 0308 wet runways
fri	3-Jul-15		
sat	4-Jul-15		
sun	5-Jul-15		
mon	6-Jul-15		
tue	7-Jul-15		
wed	8-Jul-15		
thu	9-Jul-15	1430-1800	Wind 2912G17
thu	9-Jul-15	2200-0000	Log shows north operation
fri	10-Jul-15	0000-0230	Log shows north operation.
fri	10-Jul-15	0800-0900	Went north early for Flight Check
sat	11-Jul-15		
sun	12-Jul-15	2200-0000	Reason not documented thru 2259, went south at 2259
mon	13-Jul-15		
tue	14-Jul-15	1030-1230	Wind 2008 wet runways
tue	14-Jul-15	1400-1700	Wind 2914G24
wed	15-Jul-15	1300-2130	Wind 3508 then 0108
thu	16-Jul-15		
fri	17-Jul-15	2200-0000	Wind 2311, then went north at 2233
sat	18-Jul-15	0000-0230	Log shows north operation
sun	19-Jul-15		
mon	20-Jul-15	0930-1230	Restricted Area activity
tue	21-Jul-15	1300-1730	Wind 0107, forecast 3310
wed	22-Jul-15	0300-0700	Wind 0109
thu	23-Jul-15	0930-1230	Flight Check activity
thu	23-Jul-15	1330-1500	Flight Check activity
fri	24-Jul-15		
sat	25-Jul-15		
sun	26-Jul-15		
mon	27-Jul-15		
tue	28-Jul-15		
wed	29-Jul-15	2100-2130	Weather on 17L/R finals
thu	30-Jul-15	1300-1430	Wind 3520 at 500 ft 3520, later wind 3310
fri	31-Jul-15	1430-1600	Log shows south, went north at 1450, wind 3410G17
fri	31-Jul-15	1930-2130	Reason not documented.

Daily Runway Use Uncorrected (SDF) August 2015

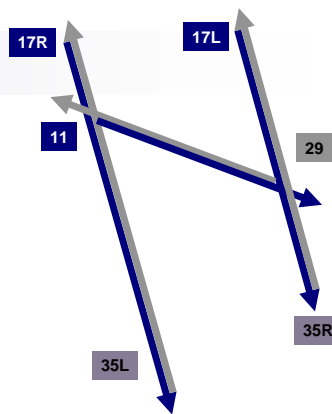
		Sat 8/1	Sun 8/2	Mon 8/3	Tue 8/4	Wed 8/5	Thu 8/6	Fri 8/7	Sat 8/8	Sun 8/9	Mon 8/10	Tue 8/11	Wed 8/12	Thu 8/13	Fri 8/14	Sat 8/15	Sun 8/16	Mon 8/17	Tue 8/18	Wed 8/19	Thu 8/20	Fri 8/21	Sat 8/22	Sun 8/23	Mon 8/24	Tue 8/25	Wed 8/26	Thu 8/27	Fri 8/28	Sat 8/29	Sun 8/30	Mon 8/31	Time	
Flow	Time																																	Time
North Flow	0:00																																0:00	
	0:30																																0:30	
	1:00																																1:00	
	1:30																																1:30	
	2:00																																2:00	
	2:30																																2:30	
South Flow	3:00																																3:00	
	3:30																																3:30	
	4:00													XXX																			4:00	
	4:30																																4:30	
	5:00																																5:00	
	5:30																																5:30	
	6:00																																6:00	
	6:30																																6:30	
	7:00																																7:00	
	7:30																																7:30	
	8:00																																8:00	
	8:30																																8:30	
9:00																																9:00		
North Flow	9:30																																9:30	
	10:00																																10:00	
	10:30																																10:30	
	11:00																																11:00	
	11:30																																11:30	
	12:00																																12:00	
12:30																																12:30		
South Flow	13:00																																13:00	
	13:30																																13:30	
	14:00																																14:00	
	14:30																																14:30	
	15:00																																15:00	
	15:30																																15:30	
	16:00																																16:00	
	16:30																																16:30	
	17:00																																17:00	
	17:30												</																					

Daily Runway Use (SDF)

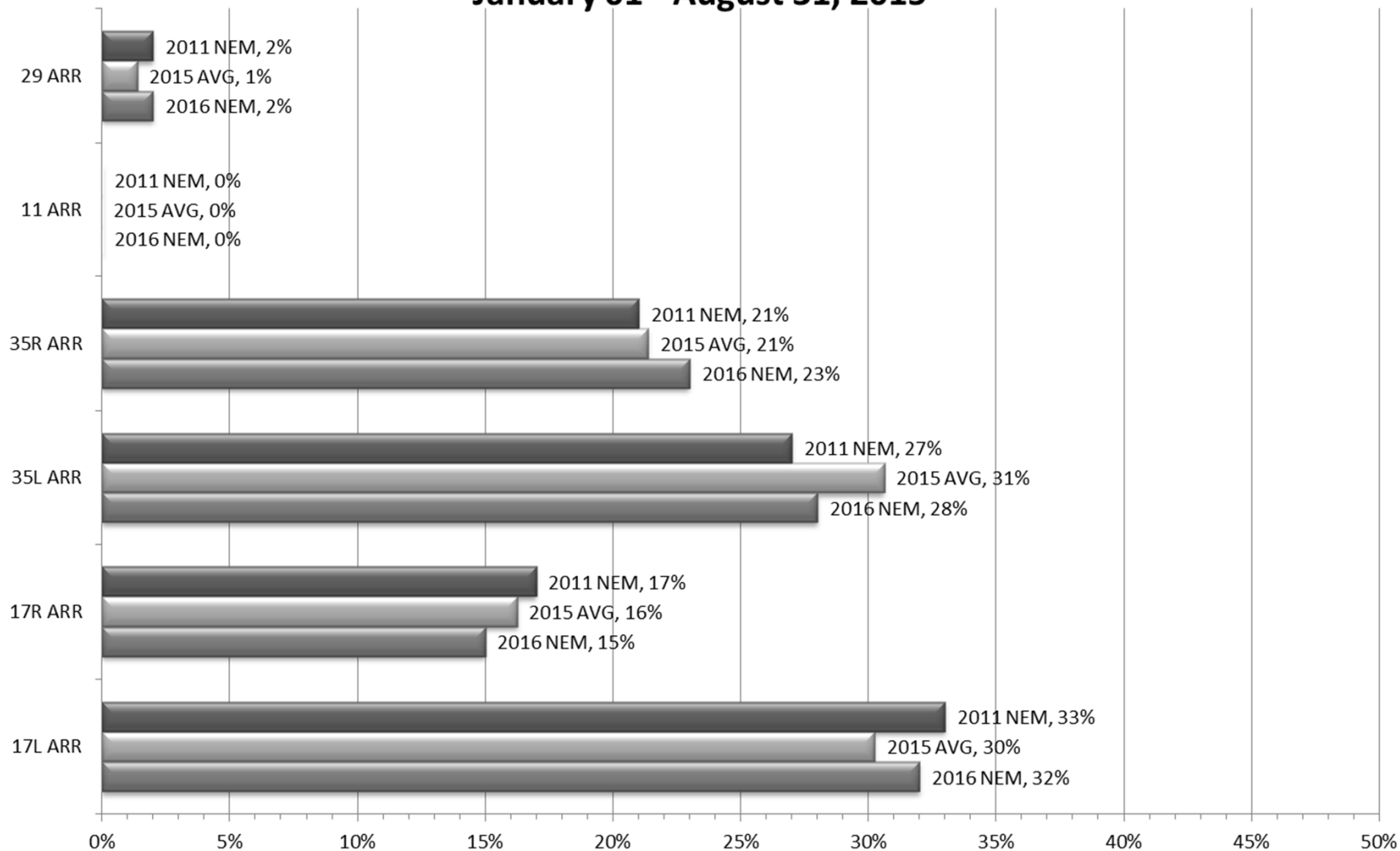
Tower Comments August 2015

Day	Date	Time	Comment
sat	1-Aug-15	2000-2200	Wind 0115G18
sun	2-Aug-15		
mon	3-Aug-15	2000-2130	Wind 3014G23
tue	4-Aug-15	1100-1230	Airport construction
tue	4-Aug-15	1530-1630	Wind 3010G14
wed	5-Aug-15	0930-1230	Airport construction
thu	6-Aug-15		
fri	7-Aug-15	0830-0900	Wind 0110
sat	8-Aug-15		
sun	9-Aug-15		
mon	10-Aug-15		
tue	11-Aug-15		
wed	12-Aug-15	2200-0000	R3704 & Apch lights RWY 35R OTS
thu	13-Aug-15	0000-0230	R3704 & Apch lights RWY 35R OTS
fri	14-Aug-15		
sat	15-Aug-15		
sun	16-Aug-15		
mon	17-Aug-15		
tue	18-Aug-15		
wed	19-Aug-15	0930-1230	Weather and thunderstorms
thu	20-Aug-15	1300-2130	Wind 2912G18
thu	20-Aug-15		
fri	21-Aug-15		
sat	22-Aug-15		
sun	23-Aug-15		
mon	24-Aug-15	0400-0600	Valid reason not documented.
tue	25-Aug-15	0930-1230	Runway closures and equipment outages
tue	25-Aug-15	1430-1630	Wind 3408G14
wed	26-Aug-15	1300-1530	Wind 3508
thu	27-Aug-15	1300-1500	Flight check on RWY 35L
fri	28-Aug-15		
sat	29-Aug-15		
sun	30-Aug-15		
mon	31-Aug-15		

Runway Use (SDF Arrivals)

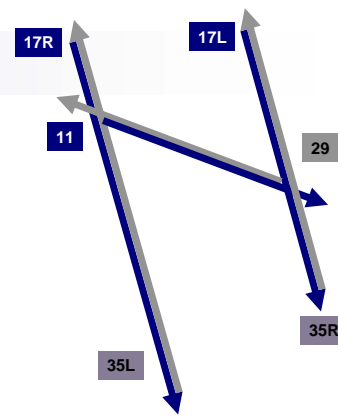


NEM vs. Actual January 01 - August 31, 2015

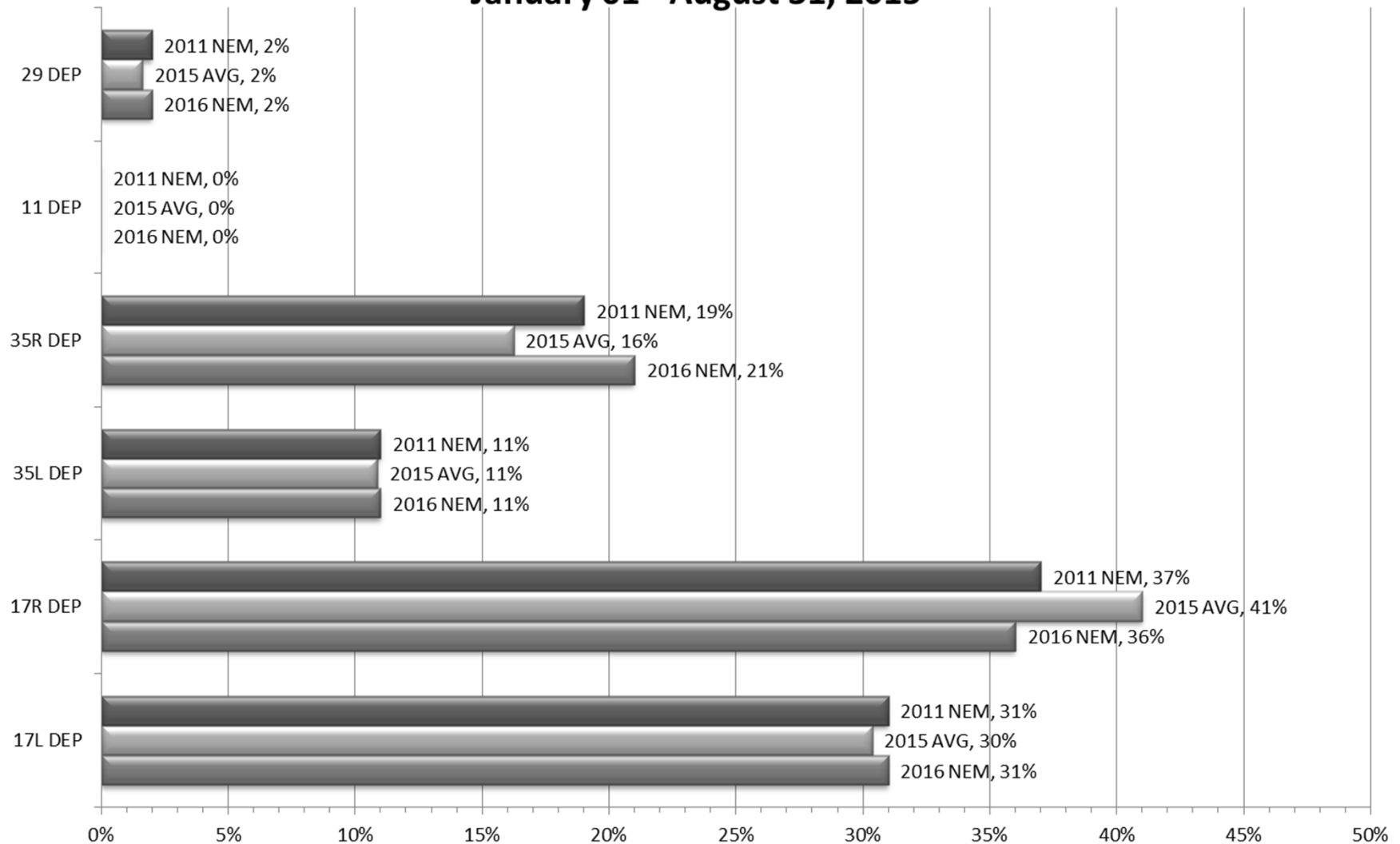


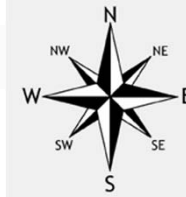
Source: Louisville International Airport
Aircraft Flight Tracking and Noise Management System (AFTNMS)

Runway Use (SDF Departures)



NEM vs. Actual
January 01 - August 31, 2015



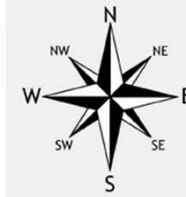


Runway Use 0930L-1230L_(SDF)

As of August 31, 2015

	Arrival Percentage by Runway							Arrival Count	Departure Percentage by Runway							Departure Count
	11	17L	17R	29	35L	35R	% From South		11	17L	17R	29	35L	35R	% To North	
Sep-13	0	13	5	0	43	39	82	676	0	14	5	0	25	56	81	448
Oct-13	0	16	14	2	37	31	68	864	0	12	18	3	13	54	67	535
Nov-13	0	29	12	0	39	20	59	721	0	26	19	3	12	40	52	437
Dec-13	0	14	13	0	42	31	73	943	0	14	16	0	9	61	70	460
Jan-14	0	27	21	2	29	21	50	682	0	28	21	4	19	37	56	401
Feb-14	0	13	11	7	37	32	69	669	0	19	11	7	15	48	63	359
Mar-14	0	25	21	7	29	18	47	675	0	30	18	4	7	41	48	408
Apr-14	0	33	19	5	23	20	43	700	0	39	19	6	9	27	36	416
May-14	0	32	25	0	24	19	43	706	0	36	22	1	5	36	41	387
Jun-14	0	27	22	0	36	15	51	643	0	36	20	2	10	32	42	389
Jul-14	0	12	12	0	44	32	76	733	0	12	10	0	20	58	78	410
Aug-14	0	13	2	0	54	31	85	673	0	11	6	0	27	56	83	407
Sep-14	0	14	8	0	38	40	78	668	0	11	11	0	20	58	78	388
Oct-14	0	30	20	0	25	25	50	767	0	35	16	0	5	44	49	414
Nov-14	0	11	15	8	44	22	66	610	0	16	14	11	10	49	59	335
Dec-14	0	22	13	0	38	27	65	959	0	24	16	1	8	51	59	373
Jan-15	0	17	6	0	45	32	77	619	0	15	8	3	22	52	74	313
Feb-15	0	14	18	0	37	31	68	619	0	12	15	2	10	61	71	317
Mar-15	0	9	17	0	47	27	74	662	0	10	15	0	28	47	75	396
Apr-15	0	20	15	14	37	14	51	667	0	24	21	16	23	16	39	371
May-15	0	28	23	0	38	11	49	656	0	33	27	0	19	21	40	358
Jun-15	0	21	22	0	42	15	57	683	0	30	22	0	17	31	48	349
Jul-15	0	12	25	0	42	21	63	827	0	17	21	0	15	47	62	403
Aug-15	0	15	25	0	38	22	60	712	0	20	19	0	15	46	61	365
Monthly Avg.	0	19	16	2	38	25	63		0	22	16	3	15	45	60	

Source: Louisville International Airport
Aircraft Flight Tracking and Noise Management System (AFTNMS)



Gate Compliance by Runway

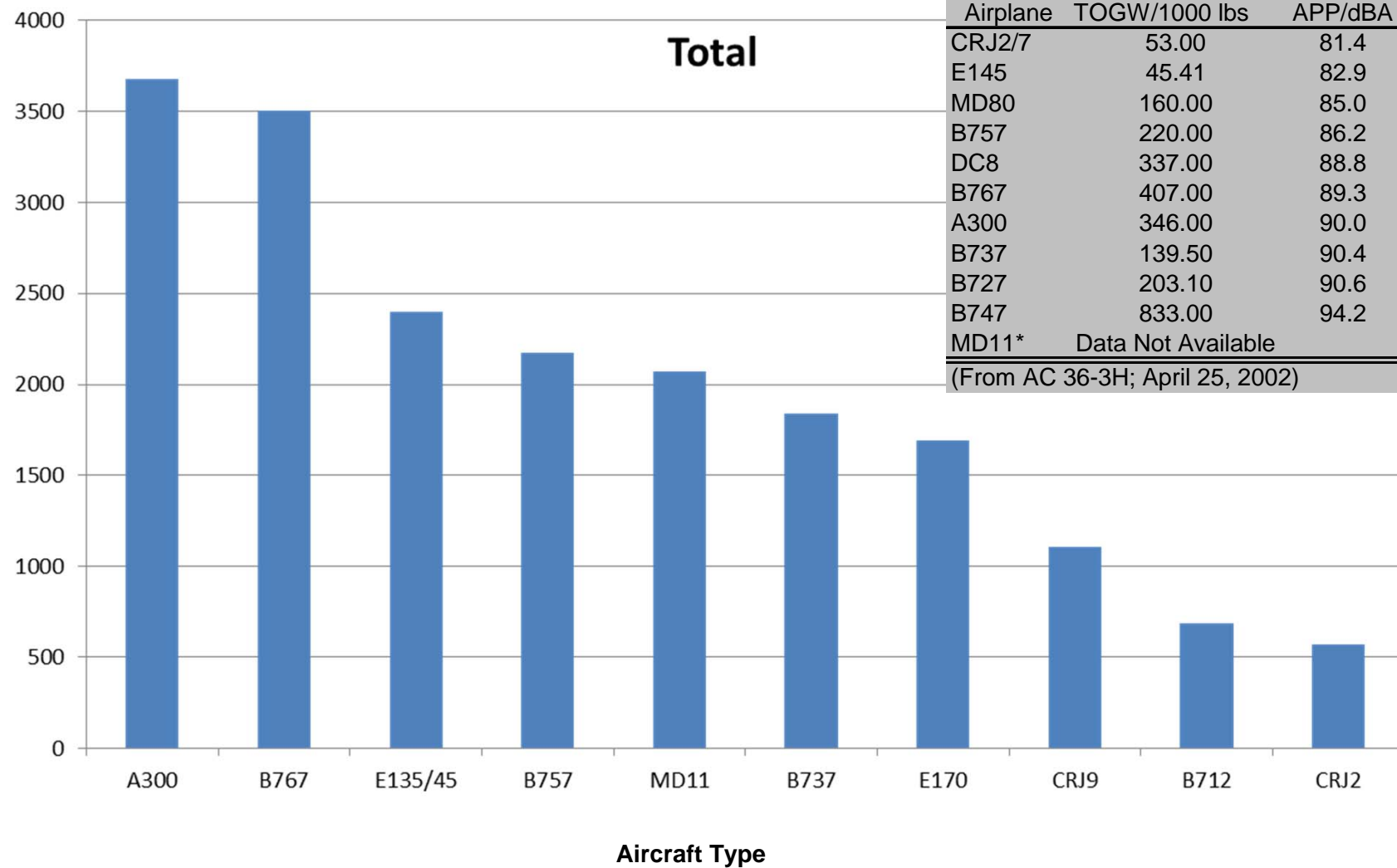
As of August 31, 2015

	ARRIVALS Percent Compliant					Departure Percent Compliant				
Month	17L	17R	35L	35R	ARR AVG	17L	17R	35L	35R	DEP AVG
Sep-13	78%	88%	76%	81%	81%	79%	86%	77%	93%	84%
Oct-13	77%	90%	83%	79%	82%	75%	90%	77%	90%	83%
Nov-13	77%	93%	80%	82%	83%	71%	91%	79%	92%	83%
Dec-13	82%	94%	90%	89%	89%	64%	87%	71%	89%	78%
Jan-14	78%	88%	86%	84%	84%	67%	91%	75%	89%	81%
Feb-14	80%	89%	86%	85%	85%	60%	90%	76%	89%	79%
Mar-14	74%	90%	79%	81%	81%	71%	86%	78%	87%	81%
Apr-14	79%	91%	82%	81%	83%	68%	81%	76%	86%	78%
May-14	75%	88%	78%	81%	81%	68%	85%	59%	82%	74%
Jun-14	82%	92%	86%	82%	86%	71%	89%	81%	94%	84%
Jul-14	79%	88%	78%	76%	80%	88%	89%	79%	92%	87%
Aug-14	84%	91%	82%	80%	84%	89%	85%	76%	90%	85%
Sep-14	81%	81%	81%	79%	81%	91%	88%	79%	92%	88%
Oct-14	82%	94%	88%	87%	88%	85%	88%	79%	92%	86%
Nov-14	80%	91%	91%	91%	88%	79%	92%	83%	87%	85%
Dec-14	91%	96%	93%	95%	94%	85%	89%	81%	88%	86%
Jan-15	80%	93%	90%	87%	88%	83%	93%	78%	88%	86%
Feb-15	80%	91%	87%	87%	86%	84%	93%	81%	92%	88%
Mar-15	78%	90%	88%	84%	85%	83%	88%	65%	86%	81%
Apr-15	83%	93%	80%	77%	83%	79%	86%	63%	82%	78%
May-15	79%	86%	84%	82%	83%	82%	87%	71%	90%	83%
Jun-15	80%	91%	87%	85%	86%	84%	89%	78%	91%	86%
Jul-15	86%	96%	88%	85%	89%	73%	86%	71%	87%	79%
Aug-15	81%	90%	82%	82%	84%	77%	88%	78%	88%	83%
24 Month Avg.					85%					83%

Source: Louisville International Airport
Aircraft Flight Tracking and Noise Management System (AFTNMS)

Operations by Aircraft Type (SDF) Only Top 10 Aircraft Types Shown

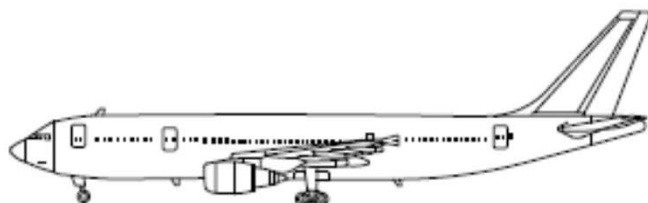
July / August 2015



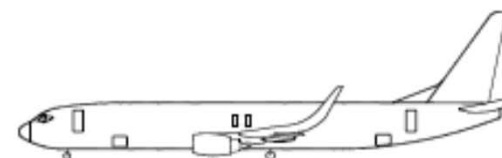
Source: Louisville International Airport

Aircraft Flight Tracking and Noise Management System (AFTNMS)

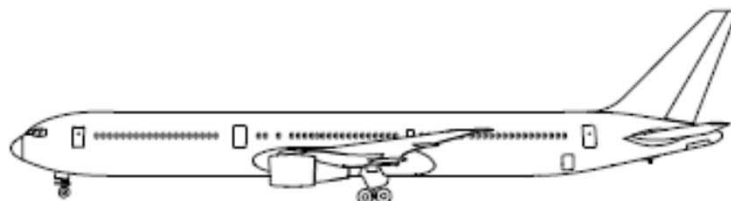
Sample Aircraft Types (SDF)



A300



B737



B767



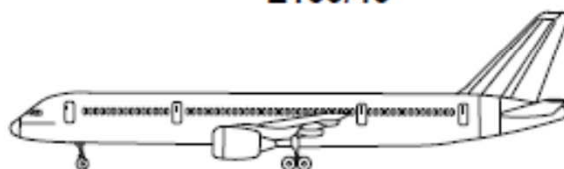
CRJ2



E135/45



E170



B757



MD80



MD11



CRJ9