

****SPECIAL MEETING****

**Community Noise Forum
Monday, November 23, 2020
Agenda**

- I. Call to order: 6:00 PM
- II. Minutes: July 27, 2020; September 21, 2020
- III. Airspace Project Update
- IV. Part 150 NCP
 - A. Noise Insulation Program
 - B. Contraflow Exceptions
- V. Current Noise Concerns
 - A. Noise Concerns/Complaints
 - B. Runway Utilization
 - C. Construction and Maintenance Activity
- VI. Guest Comments
- VII. Announcements
- VIII. Next Meeting: January 25, 2021
- IX. Adjournment

COMMUNITY NOISE FORUM (CNF)
Monday, July 27, 2020

Members

John Sistarenik, ANA
John Greathouse, Southwest
Jonathan Bonds, UPS
Aaron Rosenblum, Northeast
Tom Foote, Airline Affairs

Brian Sinnwell, LRAA
Mary Rose Evans, LRAA Board
Bob Slattery, LRAA
Greg Petto, FAA
Bill Graham, Southwest

Guests

Theresa Clifford, Brooks
Billy Clifford, Brooks

Lisa Willner, State District 35
Tom Schnetzer, Kinley-Horn

- I. **Call to order:** The meeting was called to order at 6:05 p.m. by Tom Foote.
- II. **Minutes:** The May meeting notes were approved as written.
- III. **Noise 101 2.0:** Bob Slattery reviewed the updated Noise 101 presentation with the group. The presentation will be posted on the airport website and be used as the basis for community outreach. Aaron Rosenblum recommended adding Noise Compatibility Planning to “Part 150” on the introduction slide. Tom Foote recommended updating the noise level slide by removing outdated aircraft types and replacing them with aircraft that more closely represent the current fleet mix. After making suggested changes the group agreed with posting the presentation on the airport website.
- IV. **Airspace Project Update:** Jonathan Bond updated the group on the current status of the airspace project. The project is moving forward however, things have slowed down due to the FAA only meeting remotely. The first round of simulation trials have been completed. It does appear at this point the procedures will be able to meet CNF expectations by keeping north and south departures within the current noise mitigated corridors. There is not a current timeline on when the procedures could be approved and handed off to the production side for the environmental portion. Jonathan’s guess is that it could be approximately 2 years before you would see any changes in the departure procedures.
- V. **Part 150 NCP:**
 - A. **Noise Insulation Program: Residential** – This project is to sound insulate residences within the DNL 65 contour according to the 2021 Noise Exposure Map. Pre-Acoustical testing for 32 families was completed in June. Pre testing has been completed for 163 families. Currently 85% of the families tested to date have an interior noise level of 45 dB or greater. We are currently finalizing the designs for the first group of 32 families. Designs for 45

additional families began on July 13. **UofL** – Construction is complete for first group of 3 building on the University of Louisville Campus (Life Science, Paul B. Lutz Hall and Overseers Honors House). Post acoustical testing was successfully completed in June for the first group. Bids were solicited for the second group of 2 buildings (Ernst Hall and Interfaith Center) in March. Two bids were received however; both were determined to be non-responsive. Baptist Student Union was added to the bid package and the project was re-bid in June. The contract was awarded at the July board meeting.

- B. Contraflow Exceptions:** Contraflow for May was 71% for arrivals from the south and 90% for departures to the south. In June, arrivals from the south were 69% and departures to the south were 88%. Daily summary's for each month is contained in the handout. Year to date arrivals from the south are 68% and departures to the south are 73%. A monthly summary going back 8 years is included in the handout.

VI. Current Noise Concerns:

- A. Report on Noise Concerns/Complaints:** A total of 13 comments were received in May. In June, a total of 15 comments were received. Comments and locations are contained in the handout.
- B. Runway Utilization:** Runway utilization percentages for May and June are contained in the handout. Daily runway utilization and comments from the Air Traffic Control Tower are also included in the handout. John Sistarenik recommended separating cargo and passenger aircraft operations in order to get a better idea of their relative contributions. Bob explained that it could be difficult based on how the numbers are reported by the FAA however; he will look into possible ways of breaking those out. Tom Foote said that all airlines report the number of landings each month however, increased volume does not necessarily equate to more flights.
- C. Construction and Maintenance Activity:** Brian Sinnwell reported that the west runway project has been completed for this year. Work is currently ongoing on taxiway "G" and should go through at least December. Work will begin on the east runway in mid-August which could result in weekend closures on the east side through the first of November. Work will also begin on Engineered Material Arresting System (EMAS) on the crosswind runway in August. **Master Plan Update** – Brian introduced Mr. Tom Schnetzer of Kinley-Horn who is the project manager of the Master Plan project. Tom gave a presentation on the Master Plan and updated the group on the project status. Mary Rose asked if part of the environmental work for taxiway "C" would include noise impacts. Tom replied that it would be included in the NEPA process however, we are not sure at this point what exactly that would include. Mary Rose also asked if the work in the Northwest quadrant was included in the Master Plan work or was that being done separately. Tom Foote replied that design work is currently ongoing for a two bay maintenance hangar

initially. Mary Rose asked if they are looking at noise mitigation during the design phase of the hangar. Brian said initial modeling has been done for the area and we understand how the noise goes and how it gets there. The hangar will be a partial noise barrier however, there will need to be some infill between the hangar and other areas. Looking at the noise impacts is definitely part of the project as we move forward. Aaron Rosenblum commented that he would like to see more direct community outreach with local community groups as the project moves on.

- VII. Guest Comments:** Representative Willner asked how much the FAA Noise Complaint Portal is being utilized and how that information gets back to the airport. Bob responded that he was not aware how much the portal is being utilized. He spoke with the FAA and they said they would notify the Airport Authority if they received airport related comments associated with SDF or LOU. John Sistarenik asked how much the FAA has publicized the portal. Bob replied that he was not aware of any FAA outreach to the general population. Theresa Clifford asked if complaints were weighted according to number of calls from each complainant. Bob replied that the comments were not weighted by the number of calls. Each comment received is listed individually. Ms. Clifford also asked Tom Schnetzer how individuals were selected for the Master Plan surveys. Tom replied that 500 people were interviewed by phone and they were selected randomly and the comments were broken out by zip code.
- VIII. Announcements:** Mary Rose announced that Mike Zanone has resigned from the CNF and that ANA will be looking for a replacement for the northwest quadrant representative. John Sistarenik and the CNF would like to thank Mike for his many years of service to the CNF and the Saint Joseph Neighborhood. The CNF would also like to wish him well in all future endeavors.
- IX. Next Meeting:** September 21, 2020
- X. Adjournment:** A motion was made to adjourn the meeting at 7:50 p.m.

**COMMUNITY NOISE FORUM (CNF)
Monday, September 21, 2020**

Members

John Sistarenik, ANA
Mary Rose Evans, LRAA Board
Bob Slattery, LRAA

Brian Sinnwell, LRAA
Jonathan Bonds, UPS
Tom Foote, Airline Affairs

Guests

Patricia Manias, Audubon Park

- I. **Call to order:** The meeting was called to order as a committee of the whole at 6:07 p.m. by John Sistarenik.
- II. **Minutes:** The July meeting notes were reviewed with no changes and will be presented for approval at the November meeting.
- III. **Airspace Project Update:** Jonathan Bond updated the group on the current status of the airspace project. The simulation trials were completed in July. Everything is progressing nicely at this point. A meeting with the FAA was held the last week of August via Zoom. Assurances were received from the FAA that the project was now getting into gear and it is possible implementation could begin in the fourth quarter of 2022 or first quarter of 2023. Most of this delay is COVID-19 related. Technicians are required to enter FAA facilities in Louisville, Lexington and other places in order to make adjustments to their radios, radars and other equipment. However, currently these facilities are locked down due to COVID-19.
- IV. **Part 150 NCP:**
 - A. **Noise Insulation Program: Residential** – This project is to sound insulate residences within the DNL 65 contour according to the 2021 Noise Exposure Map. Designs were finalized for the first group of 32 families. That project advertised yesterday and we plan to award a contract at the October Board meeting. Designs are currently in progress for 59 additional families. Pre acoustical testing has been completed for 163 families. Currently 85% of the families tested to date have an interior noise level of 45 dB or greater. **UofL** – Construction is complete for first group of 3 building on the University of Louisville Campus (Life Science, Paul B. Lutz Hall and Overseers Honors House). A project for the second group of 3 buildings (Ernst Hall Interfaith Center, and Baptist Student Union) was awarded at the July Board meeting. A pre-construction meeting was held on September 3rd. Physical construction is expected to begin the end of October.
 - B. **Contraflow Exceptions:** Contraflow for July was 72% for arrivals from the south and 91% for departures to the south. In August arrivals from the south

were 82% and departures to the south were 87%. Daily summary's for each month is contained in the handout. Year to date arrivals from the south are 71% and departures to the south are 77%. A monthly summary going back 8 years is included in the handout.

V. Current Noise Concerns:

A. Report on Noise Concerns/Complaints: A total of 14 comments were received in July. In August a total of 15 comments were received. Comments and locations are contained in the handout. The 4 comments received on August 14 were related to departures to north because of heavy rain and thunderstorms.

B. Runway Utilization: Runway utilization percentages for July, and August are contained in the handout. Daily runway utilization and comments from the Air Traffic Control Tower are also included in the handout. Bob Slattery informed the group the tower asked if it would be possible to expand the time period for daytime reverse flow (9:30 a.m. to 12:30 p.m.) due to the time period for the inbound flights shifting slightly over time. After reviewing arrival and departure operations it appears that potential benefits could be achieved by expanding the time period to approximately 9:00 a.m. to 2:00 p.m. The group agreed to expand the time period. Additionally, after reviewing noise complaints that were received from areas north of the airport related to operations on Sunday mornings. Flight information showed that it may be beneficial to expand the daytime reverse flow period to include Sundays as well as weekdays. Mary Rose Evans asked that if it might improve consistency if Saturdays were included as well. After reviewing the information provided the group agreed with expanding the daytime reverse flow procedures to include Sundays as well as Saturdays for consistency.

C. Construction and Maintenance Activity: Brian Sinnwell reported that phase 1 of the taxiway "G" is complete and phase 2 has about another month and a half. The runway rehab project on the east runway is ongoing and should be completed the first part of November. Bob Slattery presented slides on the potential benefits of noise barriers in areas of planned development in the northwest quadrant. The slides showed that tall noise barriers have the potential to reduce noise exposure from ground operations in this area. The placement of the aircraft relative to barriers and buildings is critical to the effectiveness of the barriers and buildings in reducing noise levels.

VI. Guest Comments: None.

VII. Announcements: None.

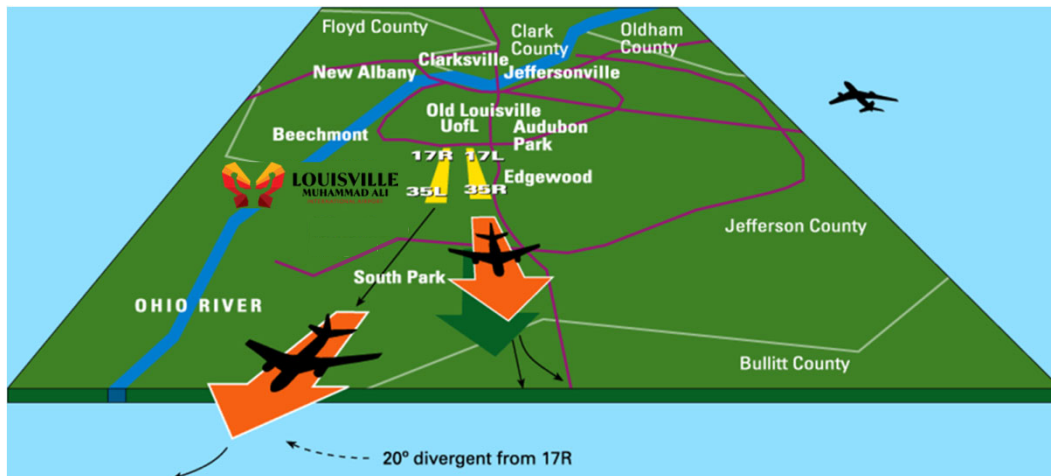
VIII. Next Meeting: November 23, 2020

IX. Adjournment: A motion was made to adjourn the meeting at 6:45 p.m.

CONTRAFLOW

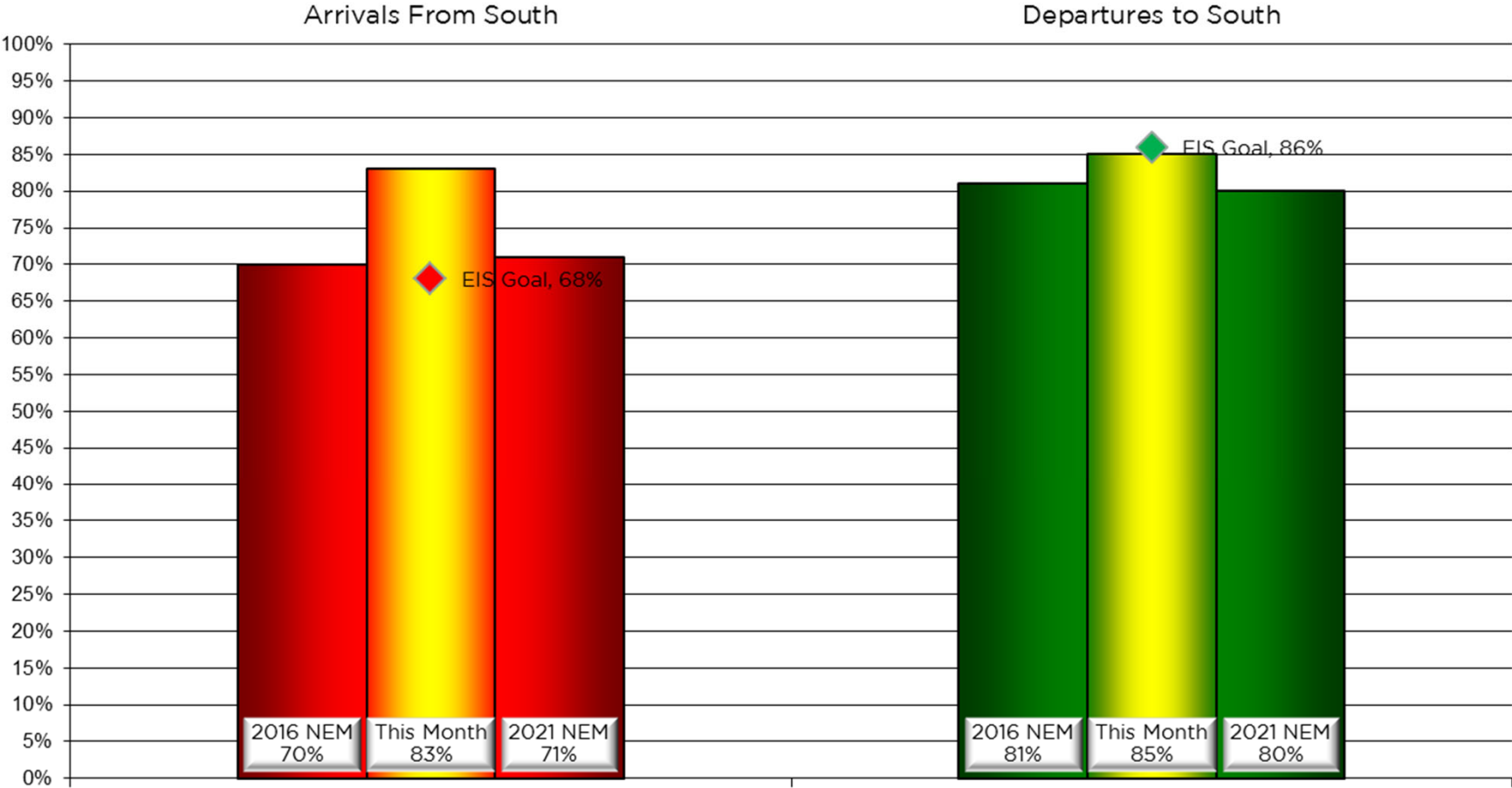
Between the hours of 10:00 p.m. and 7:00 a.m., the Airport operates from the south and to the south (contraflow) whenever wind, weather, and demand allow. Contraflow procedures require aircraft to arrive on Runways 35R and 35L and depart on Runways 17R and 17L in order to direct aircraft operations south of the Airport over areas which are less densely populated than areas north of the Airport.

Inbound



Outbound

Monthly Contraflow September 1-30, 2020



Nightly Runway Use Summary - September 2020

(from 10:00 PM date list in first column to 7:00 AM the following morning)

		% of all arrivals from the south									% of all departures to the south								
Date	Day	* in compliance	Runway#						Unknown Runway Use	Notes / Comments	** in compliance	Runway#						Unknown Runway Use	Notes / Comments
			11	17L	17R	29	35L	35R				11	17L	17R	29	35L	35R		
09/01/20	Tue	94%			6		63	31	0		68%		26	42		20	12	0	280-300@6-13kts,ra
09/02/20	Wed	77%		6	17		49	28	0		94%		35	59		2	4	0	
09/03/20	Thu	96%		1	3		64	32	0		82%		33	49		11	7	0	350-010@7-11kts
09/04/20	Fri	94%		1	5		64	30	0		92%		34	58		5	3	0	
09/05/20	Sat																		
09/06/20	Sun																		
09/07/20	Mon	0%		20	80				0	140-180@5-11kts	100%		34	66				0	
09/08/20	Tue	15%		28	57		11	4	0	120-170@3-5kts	99%		44	55			1	0	
09/09/20	Wed	95%		2	3		59	36	0		86%		34	52		9	5	0	
09/10/20	Thu	100%					70	30	0		0%				65	35	0	350-010@5-11kts	
09/11/20	Fri	94%		1	5		62	32	0		93%		33	60		4	3	0	
09/12/20	Sat																		
09/13/20	Sun																		
09/14/20	Mon	97%			3		62	35	0		92%		35	57		4	4	0	
09/15/20	Tue	96%		1	3		66	30	0		90%		33	57		5	5	0	
09/16/20	Wed	97%			3		60	37	0		79%		26	53		14	7	0	ops
09/17/20	Thu	100%					67	33	0		0%				57	43	0	360-020@6-9kts	
09/18/20	Fri	98%			2		62	36	0		88%		35	53		9	3	0	
09/19/20	Sat										77%								
09/20/20	Sun																		
09/21/20	Mon	0%		35	65				0	090-150@5-7kts	100%		38	62				0	
09/22/20	Tue	96%		1	3		61	35	0		85%		29	56		10	5	0	240-350@2-4kts,ops
09/23/20	Wed	97%		1	2		60	37	0		88%		33	55		9	3	0	
09/24/20	Thu	95%		2	3		71	24	0		87%		38	49		8	5	0	
09/25/20	Fri	92%		1	7		62	30	0		93%		40	53		2	5	0	
09/26/20	Sat																		
09/27/20	Sun																		
09/28/20	Mon	99%			1		58	41	0		88%		35	53		7	5	0	
09/29/20	Tue	97%			3		62	35	0		90%		35	55		6	4	0	
09/30/20	Wed	97%		2	1		62	35	0		92%		34	58		4	4	0	

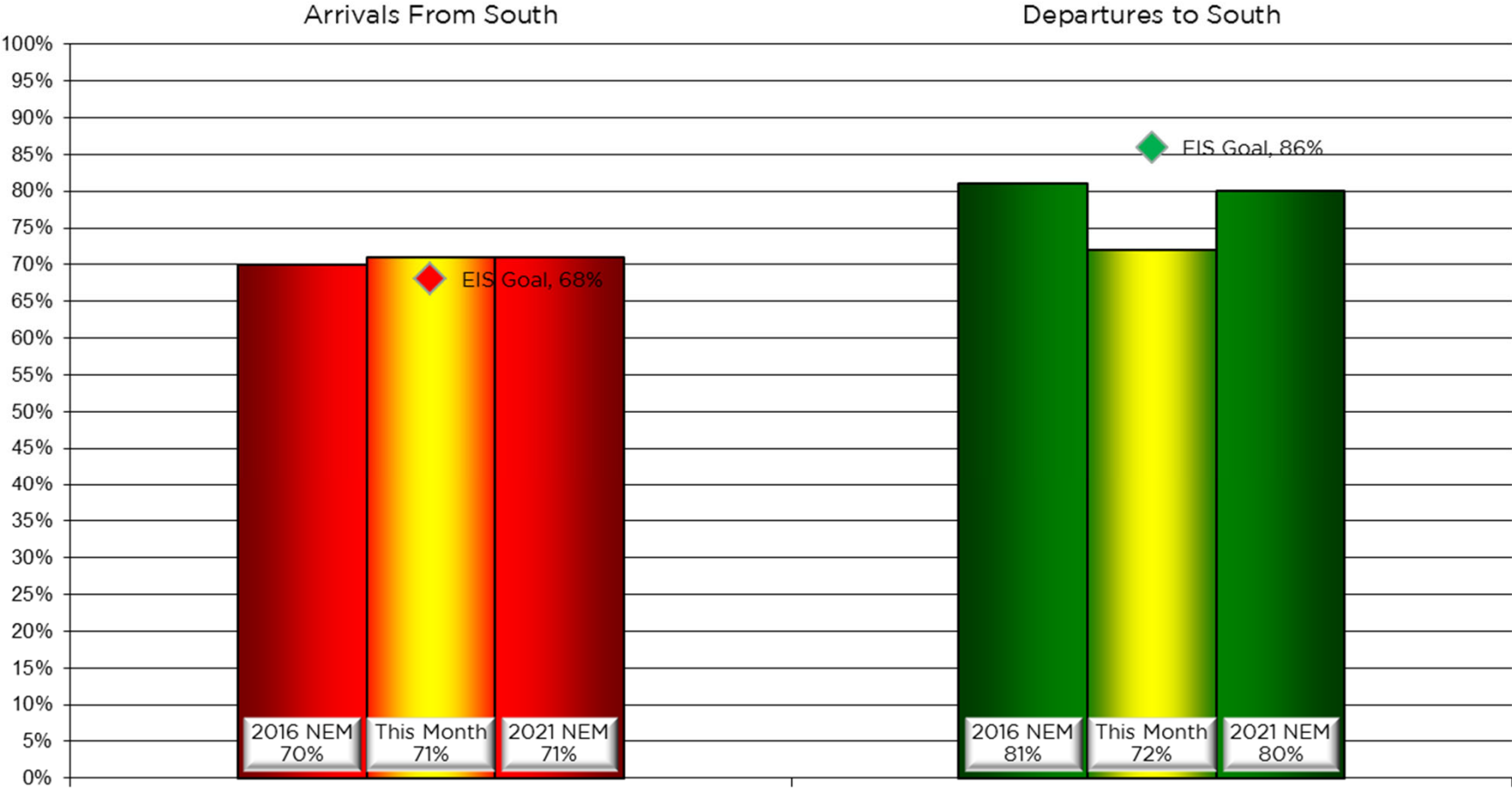
Preferred Flow

DATIS Reported Conditions Indicate Support for Non-Preferred Flow

DATIS Reported Conditions Do Not Indicate Support for Non-Preferred Flow



Monthly Contraflow October 1-30, 2020



Nightly Runway Use Summary - October 2020

(from 10:00 PM date list in first column to 7:00 AM the following morning)

		% of all arrivals from the south										% of all departures to the south										
Date	Day	*in compliance	Runway#						Unknown Runway Use	Notes / Comments	**in compliance	Runway#						Unknown Runway Use	Notes / Comments			
			11	17L	17R	29	35L	35R				11	17L	17R	29	35L	35R					
10/01/20	Thu	100%						65	35	0					2			60	38	0	260-320@3-7kts	
10/02/20	Fri	94%			1	5		66	28	0				34	59			4	3	0		
10/03/20	Sat																					
10/04/20	Sun																					
10/05/20	Mon	95%			2	2		1	60	35	0				35	56			7	2	0	
10/06/20	Tue	0%			37	63				0	130-230@4-9kts				38	62					0	
10/07/20	Wed	96%			1	3			64	32	0				34	54			7	5	0	
10/08/20	Thu	96%			1	3			63	33	0				32	57			6	5	0	
10/09/20	Fri	0%			41	59				0	170-210@4-9kts				41	59					0	
10/10/20	Sat																					
10/11/20	Sun																					
10/12/20	Mon	99%				1			62	37	0				1	3			59	37	0	290@3-4kts
10/13/20	Tue	91%			4	5			58	33	0				33	57			5	5	0	
10/14/20	Wed	0%			37	63				0	170-220@10-13kts,g24				38	61				1	0	
10/15/20	Thu	95%			1	4			56	39	0				33	55			7	5	0	
10/16/20	Fri	96%			1	3			59	37	0				33	61			4	2	0	
10/17/20	Sat																					
10/18/20	Sun																					
10/19/20	Mon	14%			36	50			12	2	0	080-180@4-9kts,ra				35	53			7	5	0
10/20/20	Tue	0%			44	56				0	130-300@4-8kts				38	62					0	
10/21/20	Wed	93%			3	4			59	34	0				30	59			5	6	0	
10/22/20	Thu	0%			36	64				0	120-180@5-9kts				34	66					0	
10/23/20	Fri	100%							66	34	0								58	42	0	340-020@10-18kts
10/24/20	Sat																					
10/25/20	Sun																					
10/26/20	Mon	96%			2	2			61	35	0				32	52			12	4	0	
10/27/20	Tue	96%			1	3			60	36	0				34	57			5	4	0	
10/28/20	Wed	100%							64	36	0								63	37	0	250-090@3-11kts,g21,ra
10/29/20	Thu	100%							62	38	0								67	33	0	320-330@6-13kts,g19
10/30/20	Fri	95%			2	3			63	32	0				40	55			3	2	0	

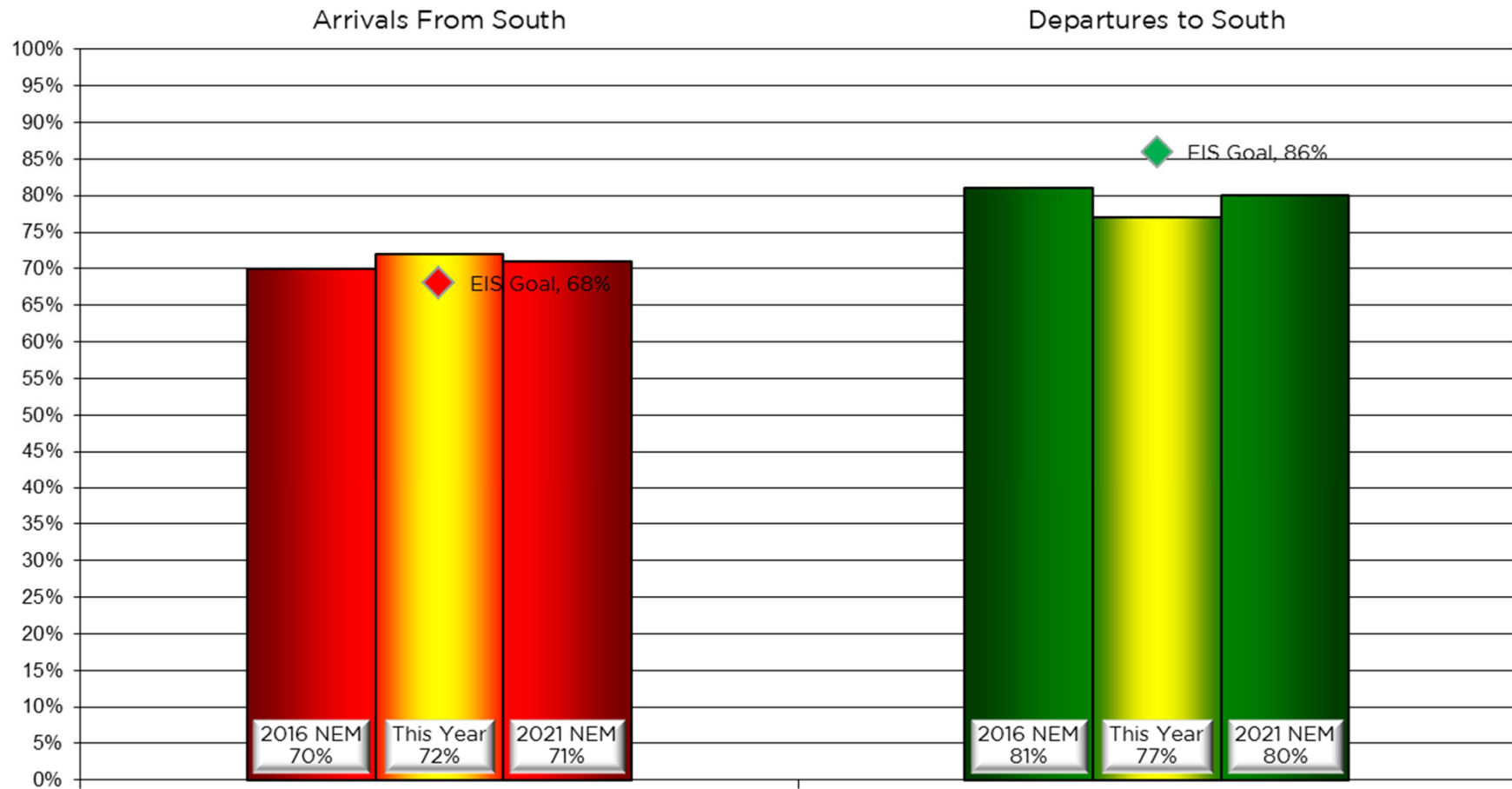
Preferred Flow

DATIS Reported Conditions Indicate Support for Non-Preferred Flow

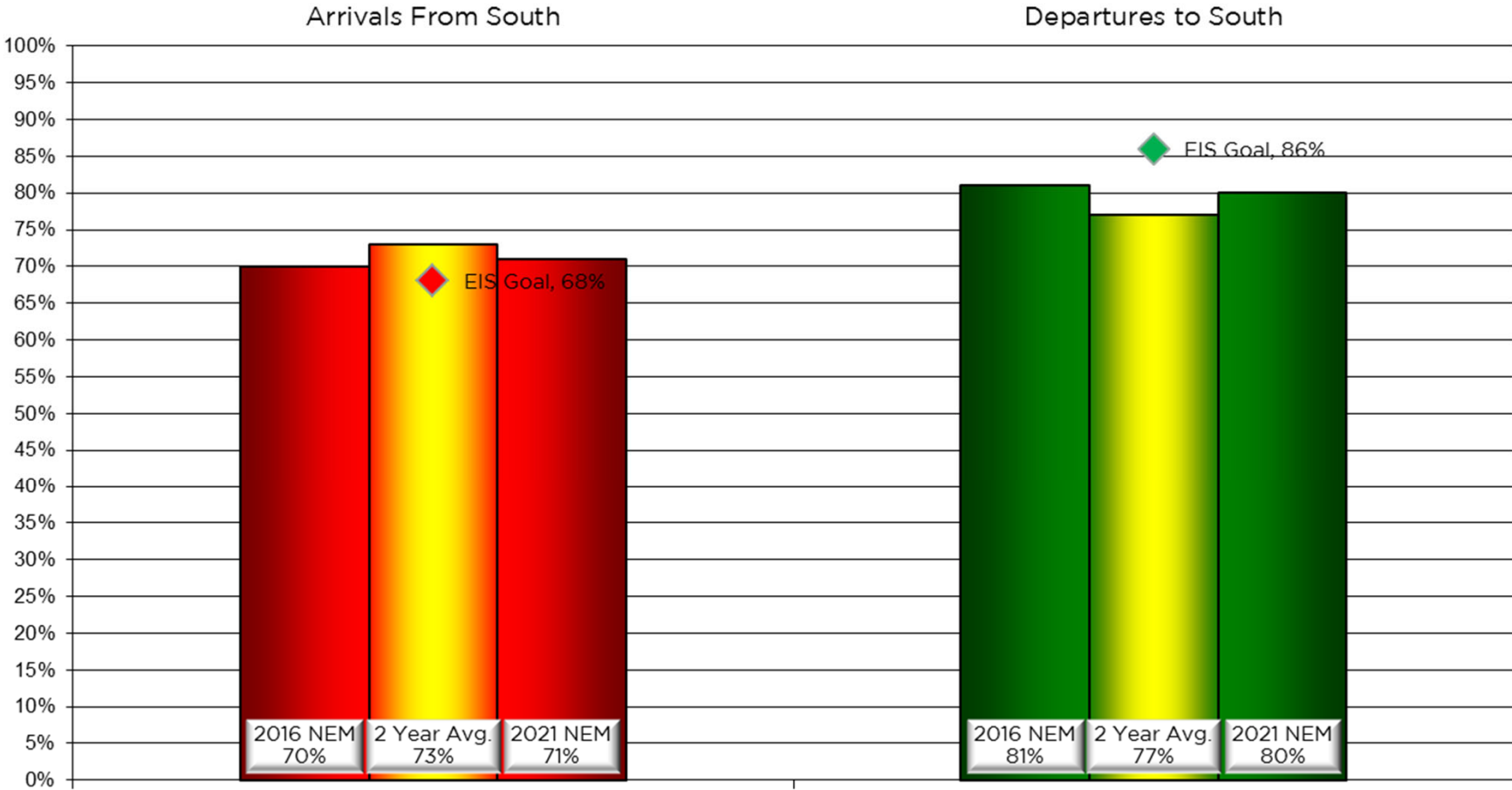
DATIS Reported Conditions Do Not Indicate Support for Non-Preferred Flow



Contraflow This Year As of October 30, 2020



Contraflow 2 Year Average November 2018 - October 2020



Year-to-Year by Month Percent* Contraflow

Arrivals From the South (Goal 68%)										Departures to the South (Goal 86%)									
	2013	2014	2015	2016	2017	2018	2019	2020	Avg		2013	2014	2015	2016	2017	2018	2019	2020	Avg
Jan	72%	51%	76%	69%	65%	60%	75%	56%	66%	Jan	65%	81%	76%	69%	61%	72%	69%	82%	72%
Feb	77%	72%	66%	80%	58%	67%	78%	78%	72%	Feb	78%	71%	76%	67%	77%	70%	57%	43%	67%
Mar	87%	60%	71%	63%	79%	84%	82%	65%	74%	Mar	77%	77%	66%	77%	62%	61%	89%	64%	72%
Apr	60%	67%	53%	86%	56%	73%	65%	71%	66%	Apr	89%	83%	77%	73%	80%	72%	82%	69%	78%
May	46%	60%	75%	62%	75%	43%	65%	71%	62%	May	85%	92%	80%	80%	80%	89%	90%	90%	86%
Jun	76%	75%	57%	79%	74%	74%	50%	69%	69%	Jun	80%	91%	91%	83%	93%	91%	91%	88%	89%
Jul	74%	79%	74%	59%	85%	90%	75%	72%	76%	Jul	88%	85%	80%	91%	85%	77%	87%	91%	86%
Aug	84%	61%	86%	76%	79%	72%	88%	82%	79%	Aug	92%	92%	91%	90%	90%	88%	89%	87%	90%
Sep	86%	85%	95%	88%	85%	80%	83%	83%	86%	Sep	87%	86%	73%	93%	31%	87%	77%	85%	77%
Oct	87%	75%	86%	81%	81%	77%	79%	71%	80%	Oct	89%	79%	74%	81%	82%	76%	78%	72%	79%
Nov	73%	78%	59%	74%	69%	76%	70%		73%	Nov	83%	62%	88%	77%	75%	54%	72%		74%
Dec	58%	78%	55%	75%	74%	72%	76%		69%	Dec	71%	68%	79%	62%	74%	61%	72%		69%
Avg	73%	70%	71%	74%	73%	72%	74%	72%		Avg	82%	81%	79%	79%	74%	75%	79%	77%	



NOISE COMMENT REPORT

LOUISVILLE

REGIONAL AIRPORT AUTHORITY



September 2020

Comments (SDF/LOU)

September 2020

Street	Zip Code	CNF Quad / 2021 DNL	Time Received	Time	Airport	Disturbance Type	Status	Operation or Comment Type ¹	Deviation Type ²	Comments ³
W. Ormsby	40203	NW (60-65)	2020-09-08 23:32:00	2020-09-08 23:30:00	SDF	Noise At Wrong Time	Investigated	Non-Standard	Weather	We have discussed airplane noise before. I am calling because it is 11:30 at night and we have planes flying overhead and there is no wind at all. I understand the rules for how the airport is supposed to be run. I would like to meet with somebody. We have been talking on the phone for too long. There are too many problems with the noise especially on Sunday mornings.
Mitchell Hill Rd	40118	SW (<60)	2020-09-10 17:37:00	2020-09-10 17:35:00	SDF	Aircraft Off Course	Investigated	Non-Standard	Ops	At 5:05 this morning a plane flew very low over my house. As far as I know UPS is the only airline flying that early. At 5:35 this afternoon a UPS plane flying low passed over the intersection of Mitchell Hill Road and Keys Ferry Road.
W. Ormsby	40203	NW (60-65)	2020-09-13 09:35:00	2020-09-13 08:30:00	SDF	Noise At Wrong Time	Investigated	Standard	None	It is Sunday morning about 9:30 and I have been watching these planes. I would say in the last hour we have had 10 or more. A couple of them have been one right after the other. Most are UPS. So between 8:30 a.m. and 9:30 a.m. we have had some heavy traffic.
W. Ormsby	40203	NW (60-65)	2020-09-13 11:05:00	2020-09-13 08:30:00	SDF	Noise At Wrong Time	Investigated	Standard	None	It is now 11:00 on Sunday morning and I am calling to report that the planes are still going over steadily. I underestimated. I would say that between 8:30 a.m. and 11:00 a.m. the planes have been going over at a rate not all that different from a weeknight. There are a lot of UPS planes flying. Sunday morning is a busy time.
Elmwood Ave	40207	NE (NA)	2020-09-15 18:00:00	2020-09-15 17:00:00	LOU	Aircraft Too Low	Investigated	Standard	None	I am making a noise complaint about prop planes flying over our home in Bellewood. If this is not the correct forum, could you please provide me that info?

1. **Standard:** Indicates the "Most Preferred" runway configuration was being utilized at the time of the comment.
Non Standard: Indicates that a "Lesser Preferred" runway configuration was being utilized at the time of the comment.
QHP: QuieterHome Program
2. This column is used to indicate the conditions which most likely necessitated a deviation from the standard procedures.
3. Comments may be edited for space, format, or unrelated content.

Comments (SDF/LOU)

September 2020

Street	Zip Code	CNF Quad / 2021 DNL	Time Received	Time	Airport	Disturbance Type	Status	Operation or Comment Type ¹	Deviation Type ²	Comments ³
S 5th St	40214	NW (<60)	2020-09-23 15:30:00	2020-09-23 15:25:00	SDF	Aircraft Off Course	Investigated	Non-Standard	Ops	I have talked to you before about these jets coming right over top of my house. In the last 5 minutes 2 UPS jets just went over the very top of my house. Then they get over to Taylor Boulevard or maybe 7th Street and then they turn north again. This is a problem. There are no storms downtown, there might be a few more people downtown but I live here. If there is a danger problem with one of them crashing I think they need to be grounded. This has got to stop. You have to tell me how to stop it. If not I guess I will have to go to the FAA or whoever it is.
Bridget Dr	40118	SW (60-65)	2020-09-23 17:29:00	2020-09-23 17:29:00	SDF	Aircraft Off Course	Investigated	Standard	None	I was calling about the flights. They seemed to increase for UPS. It seems like we are getting more and more over our area. The planes are lower, more frequent, more noise. It seems like they have changed their flight pattern. At one time they were supposed fly straight out.
Mitchell Hill Rd	40118	SW (<60)	2020-09-27 19:26:00	2020-09-27 18:18:00	SDF	Aircraft Off Course	Investigated	Non-Standard	Ops	At 6:18 p.m. on Sunday, 9/27 a UPS plane flew north of my house over the main intersection of Fairdale. (If you don't know where the main intersection of Fairdale is, give me a call and I'll show you where it is on Google Maps.)
Mitchell Hill Rd	40118	SW (<60)	2020-09-27 19:26:00	2020-09-27 18:43:00	SDF	Aircraft Off Course	Investigated	Non-Standard	Ops	At 6:43 p.m. on Sunday 9/27 a UPS plane flew directly over my house.

1. **Standard:** Indicates the “Most Preferred” runway configuration was being utilized at the time of the comment.

Non Standard: Indicates that a “Lesser Preferred” runway configuration was being utilized at the time of the comment.

QHP: QuieterHome Program

2. This column is used to indicate the conditions which most likely necessitated a deviation from the standard procedures.

3. Comments may be edited for space, format, or unrelated content.

Comments (SDF/LOU)

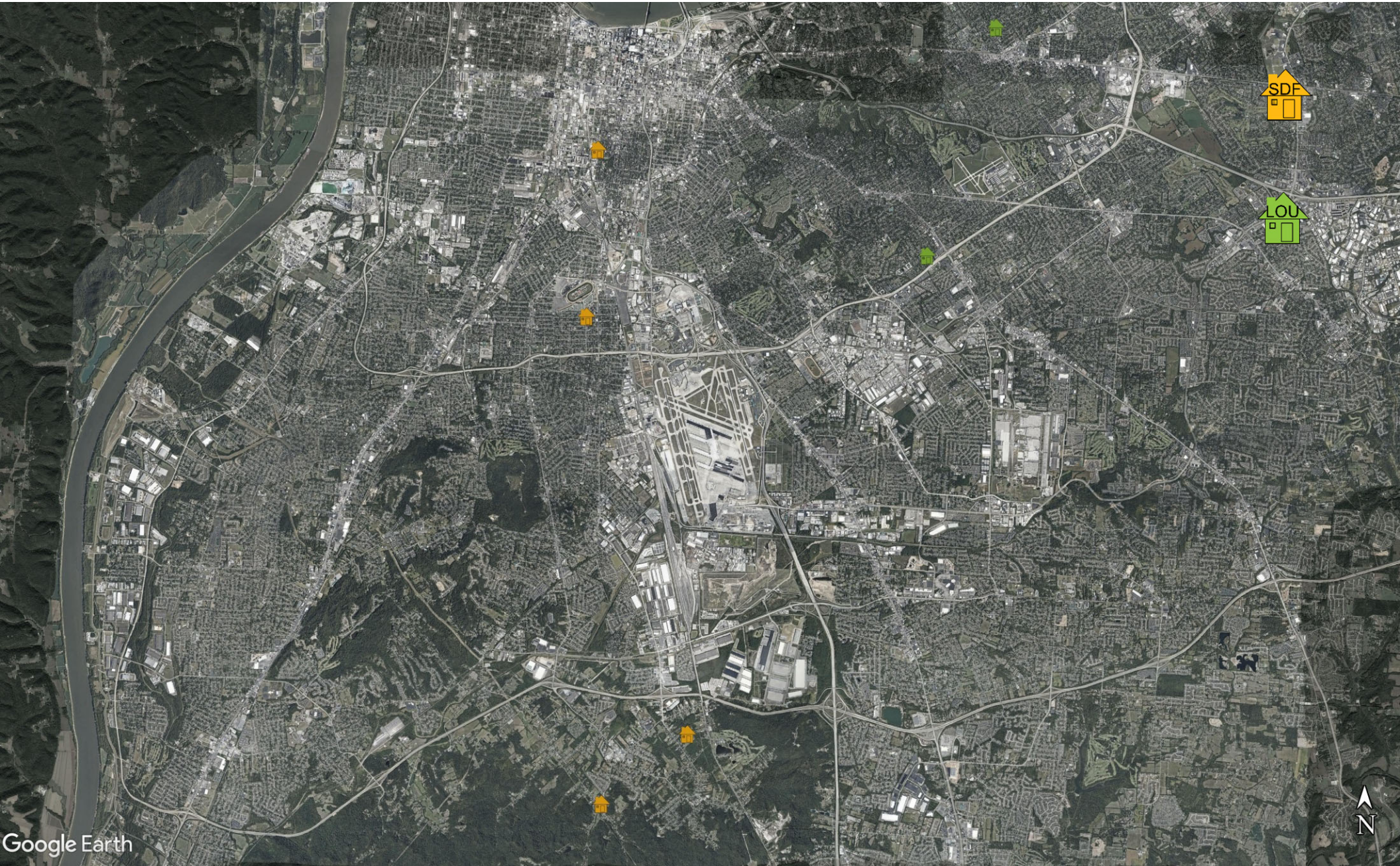
September 2020

Street	Zip Code	CNF Quad / 2021 DNL	Time Received	Time	Airport	Disturbance Type	Status	Operation or Comment Type ¹	Deviation Type ²	Comments ³
Gardiner Ln	40205	NE (n/a)	2020-09-30 14:23:00	2020-09-28 12:05:00	LOU	Constant Noise	Investigated	Standard	None	<p>I am writing in regards to the increased air traffic from Bowman Field with these low flying private planes and biplanes. I am located one block from the Nolan Building and I am paying \$5000.00 dollars in property taxes a year. When I moved here twenty years ago, we had some air traffic from UPS and the airport. These were never a nuisance because they fly higher up in the sky and not as frequently as Bowman Field. This was acceptable because they weren't so low to my rooftop. What I am now experiencing is Bowman Field has changed its flight patterns (I'm assuming) because this didn't happen before. They start flying over my house at 6:30 a.m. and a new plane departs every 15 minutes! This goes up until 10:00 p.m. at night. The noise from the planes keeps me from sleeping as well as I cannot hear the television. That is a lot of planes and way too many going across a neighborhood. You can do the math on the numbers. This is a nuisance because they are so close to the rooftops. I can understand the noise if I lived next to Bowman Field, but I choose here to be away from airports. I am paying way too much in taxes to have to listen to them going over my property daily. Do you know why they changed their flight patterns? Please, why don't they depart their planes over the park and golf course areas? Please can you address this issue?</p>
							Received	LRAA	10	

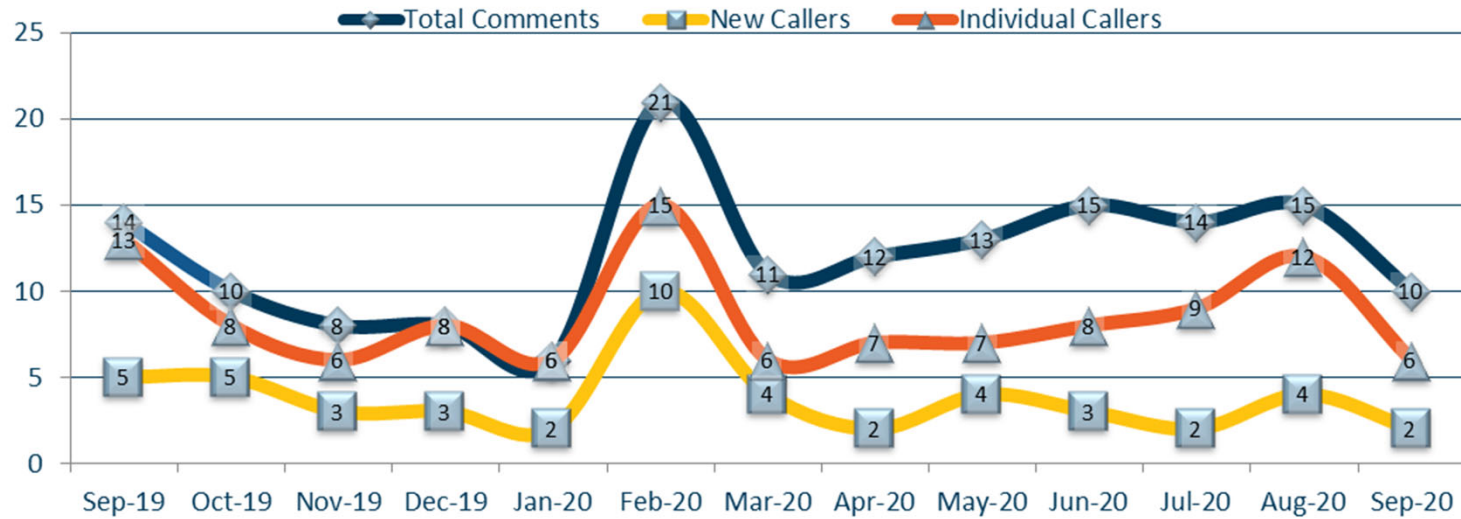
1. **Standard:** Indicates the "Most Preferred" runway configuration was being utilized at the time of the comment.
Non Standard: Indicates that a "Lesser Preferred" runway configuration was being utilized at the time of the comment.
QHP: QuieterHome Program
2. This column is used to indicate the conditions which most likely necessitated a deviation from the standard procedures.
3. Comments may be edited for space, format, or unrelated content.

Comment Location (SDF/LOU)

September 2020

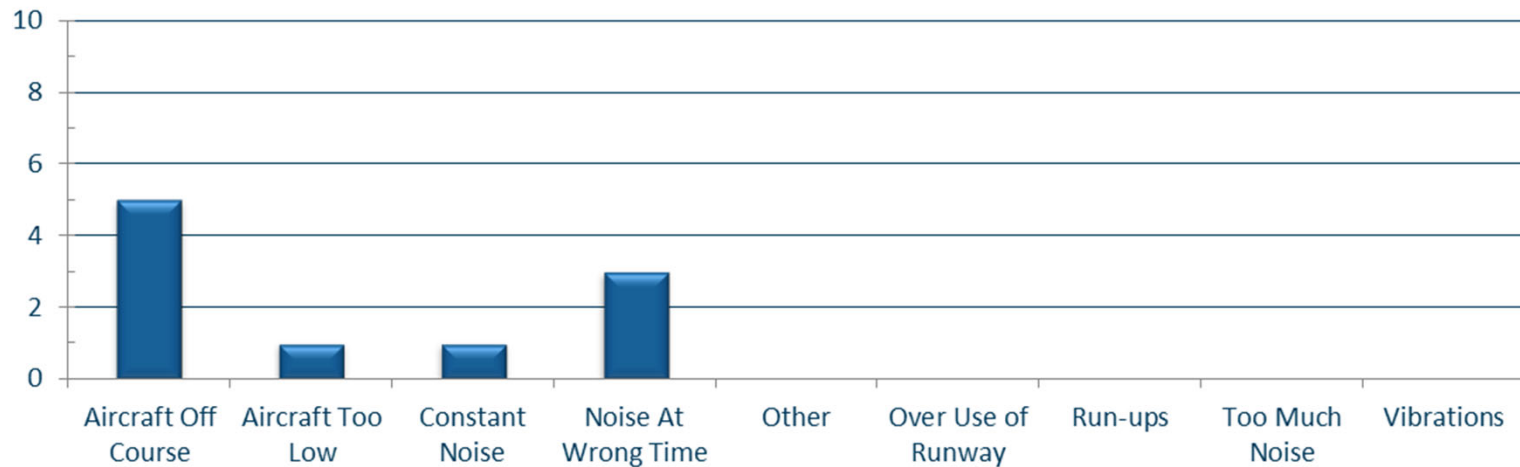


New Address/Comments per Month (SDF and LOU)



Comment Type (SDF and LOU)

September 2020





NOISE COMMENT REPORT

LOUISVILLE

REGIONAL AIRPORT AUTHORITY



October 2020

Comments (SDF/LOU)

October 2020

Street	Zip Code	CNF Quad / 2021 DNL	Time Received	Time	Airport	Disturbance Type	Status	Operation or Comment Type ¹	Deviation Type ²	Comments ³
Landor Ave	40205	NE (N/A)	2020-10-04 11:39:00	2020-10-04 11:29:00	LOU	Too Much Noise	Investigated	Standard	None	On Sunday, Oct. 4 at 11:29 a.m., an airplane went over our house coming from or going to Bowman Field. I live in the Seneca Vista neighborhood and it was one of the loudest planes I have ever heard in 13 years of living here. Of course when Thunder is under way we accept the shaking of the windows and our homes when those planes go over but this plane was deafening. Please tell me that these types of overly noisy planes are not being allowed to use Bowman Field. It was absolutely too loud for a neighborhood airport.
McCoy Way	40205	NE (N/A)	2020-10-06 12:09:00	2020-10-05 21:45:00	LOU	Noise At Wrong Time	Investigated	Standard	None	I am calling about the planes that fly over at night. Last night they were going over at least until 9:45 p.m.
Parklawn Dr	40217	NE (60-65)	2020-10-13 09:56:00	2020-10-13 09:56:00	SDF	Other	Investigated	Standard	None	I am writing to ask if my home would be eligible for the noise reduction window installation. I have been in my home on Parklawn Drive for over 30 years. When I go down my street it looks like all of my neighbors have basically the same windows, and I wonder if I would be eligible?
Mitchell Hill Rd	40118	SW (<60)	2020-10-19 15:53:00	2020-10-19 14:32:00	SDF	Aircraft Off Course	Investigated	Non-Standard	Ops	At 2:32 this afternoon a UPS plane flew directly over my house. At 2:33 another UPS plane flew directly over the center of Fairdale, the intersection of Mt. Holly, Fairdale, W. Manslick and Mitchell Hill Roads.

- Standard:** Indicates the "Most Preferred" runway configuration was being utilized at the time of the comment.
Non Standard: Indicates that a "Lesser Preferred" runway configuration was being utilized at the time of the comment.
QHP: QuieterHome Program
- This column is used to indicate the conditions which most likely necessitated a deviation from the standard procedures.
- Comments may be edited for space, format, or unrelated content.

Comments (SDF/LOU)

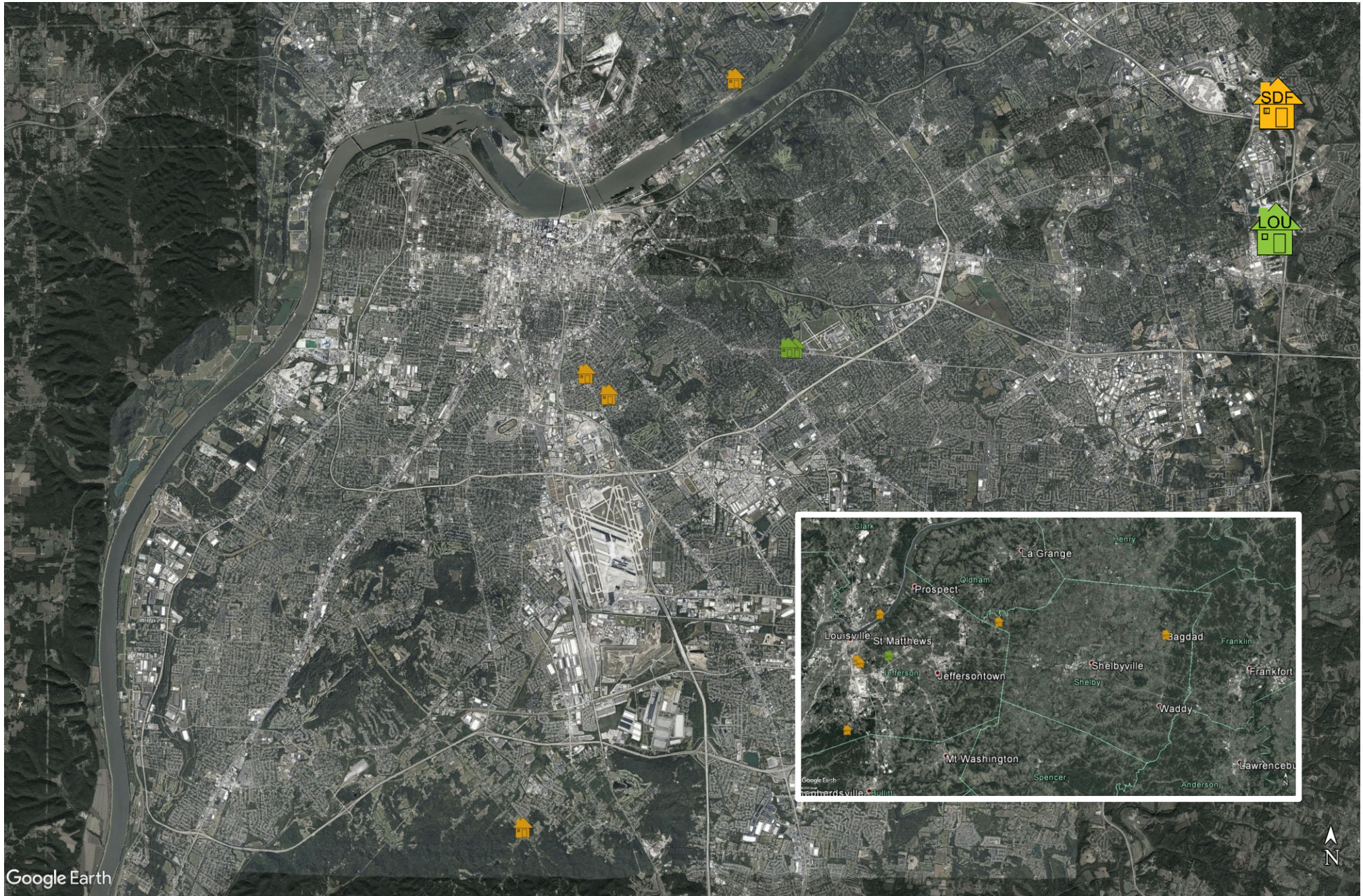
October 2020

Street	Zip Code	CNF Quad / 2021 DNL	Time Received	Time	Airport	Disturbance Type	Status	Operation or Comment Type ¹	Deviation Type ²	Comments ³
Elmburg Rd	40003	NE (<60)	2020-10-22 13:00:00	2020-10-22 13:29:23	SDF	Noise At Wrong Time	Investigated	Standard	None	I am writing to file an aircraft noise pollution complaint due to the excessive noise emanated from the sky specifically between 8:00 p.m. and 9:00 a.m. as evidenced by preventing me from sleeping or staying asleep and flying directly across my house in Bagdad, Kentucky in Shelby County since June 2020 to present.
Carlotia Dr	47130	SI (<60)	2020-10-26 20:33:00	2020-10-26 20:00:00	SDF	Too Much Noise	Investigated	Non-Standard	None	Noise complaint: UPS2086 MD11 out of SDF at 20:00 on 2020-10-26 (SDF EWR 09:26). It drowned out my TV and my house windows were all closed up tight. Please ask them to fly straight up I-65 until they get higher, before turning east.
Persimmon Ridge Dr	40245	NE (<60)	2020-10-27 09:41:00	2020-10-27 04:00:00	SDF	Too Much Noise	Investigated	Standard	Weather	I live in western Shelby county (Persimmon Ridge). From roughly 4:00 a.m. through 6:00 a.m. there is very loud repeating noise of aircraft. I assume UPS planes. Very surprising since we are 20 miles from the airport, but it is LOUD and repeats one after another after another. It really affects quality of life (and sleep). Please consider alternate routes or later times.
Texas Ave	40217	NE (65+)	2020-10-30 18:21:00	2020-10-30 18:21:00	SDF	Other	Complaint	Standard	None	I am calling about the airport noise reduction program. I would like to know how my home has a lower noise level than the house next door when they are the same and I am closer to the airplanes.
							Received	LRAA	8	

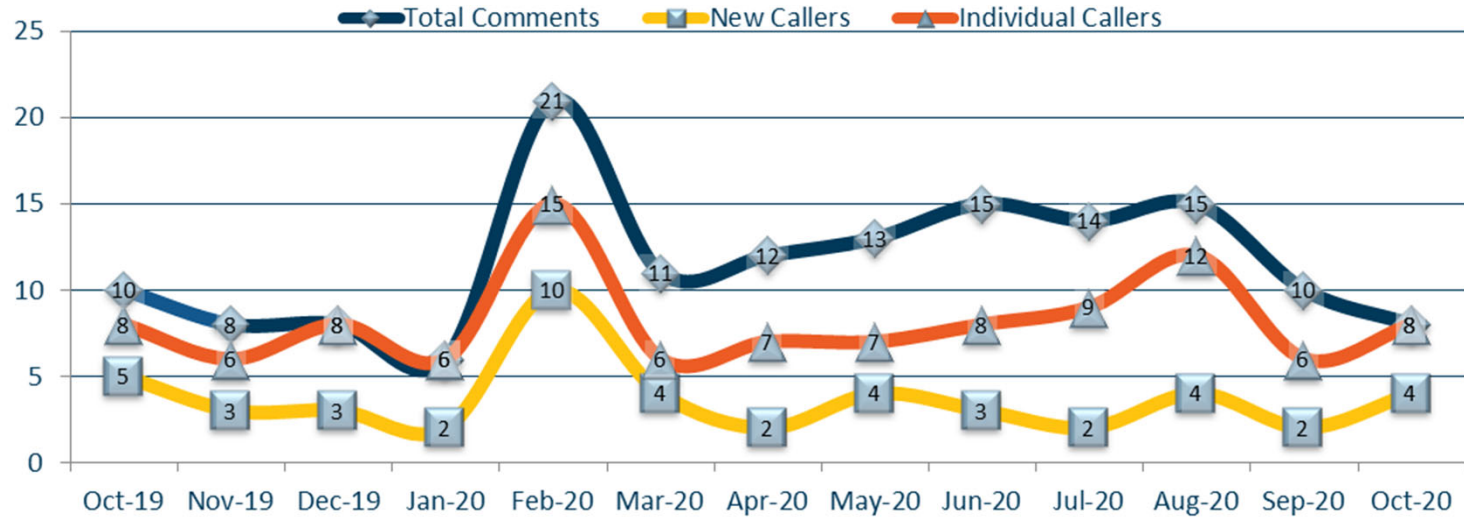
1. **Standard:** Indicates the “Most Preferred” runway configuration was being utilized at the time of the comment.
Non Standard: Indicates that a “Lesser Preferred” runway configuration was being utilized at the time of the comment.
QHP: QuieterHome Program
2. This column is used to indicate the conditions which most likely necessitated a deviation from the standard procedures.
3. Comments may be edited for space, format, or unrelated content.

Comment Location (SDF/LOU)

October 2020

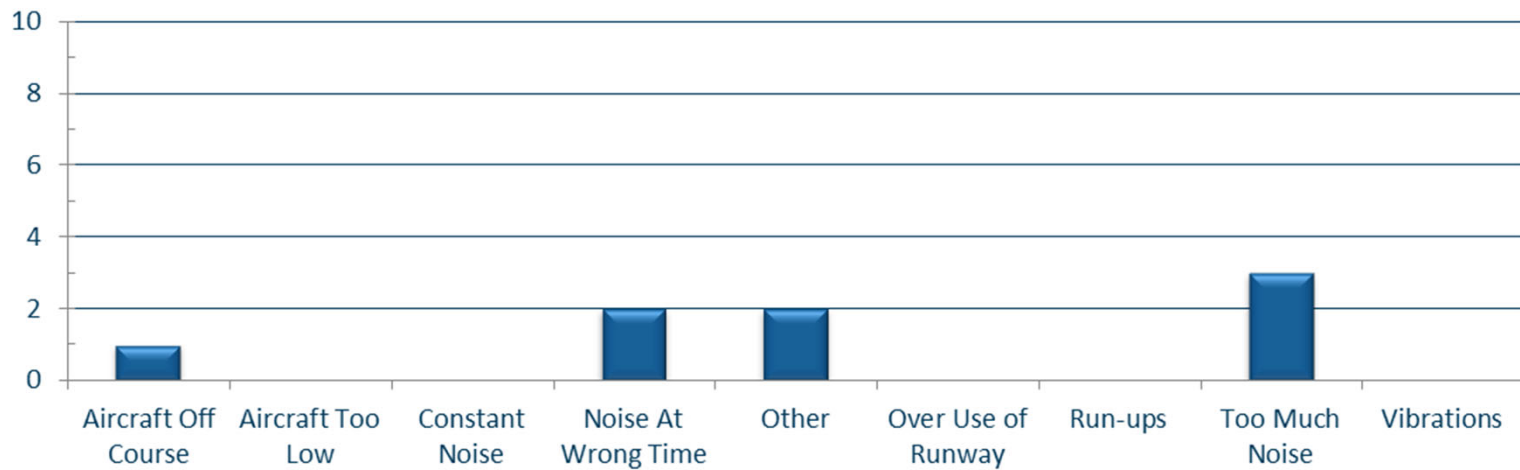


New Address/Comments per Month (SDF and LOU)



Comment Type (SDF and LOU)

October 2020



Daily Runway Use Uncorrected (SDF) September 2020

Flow	Time	Tue 9/1	Wed 9/2	Thu 9/3	Fri 9/4	Sat 9/5	Sun 9/6	Mon 9/7	Tue 9/8	Wed 9/9	Thu 9/10	Fri 9/11	Sat 9/12	Sun 9/13	Mon 9/14	Tue 9/15	Wed 9/16	Thu 9/17	Fri 9/18	Sat 9/19	Sun 9/20	Mon 9/21	Tue 9/22	Wed 9/23	Thu 9/24	Fri 9/25	Sat 9/26	Sun 9/27	Mon 9/28	Tue 9/29	Wed 9/30	Time	
North Flow	0:00																															0:00	
	0:30																																0:30
	1:00																																1:00
	1:30																																1:30
	2:00																																2:00
	2:30																																2:30
South Flow	3:00																															3:00	
	3:30																															3:30	
	4:00																															4:00	
	4:30																															4:30	
	5:00																															5:00	
	5:30																															5:30	
	6:00																															6:00	
	6:30																															6:30	
	7:00																															7:00	
	7:30																																7:30
	8:00																																8:00
	8:30																																8:30
9:00																																9:00	
North Flow	9:30																															9:30	
	10:00																															10:00	
	10:30																															10:30	
	11:00																															11:00	
	11:30																															11:30	
	12:00																																12:00
South Flow	13:00																														13:00		
	13:30																															13:30	
	14:00																															14:00	
	14:30																															14:30	
	15:00																															15:00	
	15:30																															15:30	
	16:00																															16:00	
	16:30																															16:30	
	17:00																																17:00
	17:30																																17:30
	18:00																																18:00
	18:30																																18:30
	19:00																																19:00
	19:30																																19:30
20:00																																20:00	
20:30																																20:30	
21:00																																21:00	
21:30																																21:30	
North Flow	22:00																															22:00	
	22:30																															22:30	
	23:00																															23:00	
	23:30																															23:30	
Flow	Time	Tue 9/1	Wed 9/2	Thu 9/3	Fri 9/4	Sat 9/5	Sun 9/6	Mon 9/7	Tue 9/8	Wed 9/9	Thu 9/10	Fri 9/11	Sat 9/12	Sun 9/13	Mon 9/14	Tue 9/15	Wed 9/16	Thu 9/17	Fri 9/18	Sat 9/19	Sun 9/20	Mon 9/21	Tue 9/22	Wed 9/23	Thu 9/24	Fri 9/25	Sat 9/26	Sun 9/27	Mon 9/28	Tue 9/29	Wed 9/30	Time	

- Preferred Flow
- DATIS Reported Conditions Indicate Support for Non-Preferred Flow
- DATIS Reported Conditions Do Not Indicate Support for Non-Preferred Flow
- South Flow is Preferred Flow from 09:30 Saturday - 09:30 Monday
- X Complaint

Source: Louisville International Airport
Aircraft Flight Tracking and Noise Management System (AFTNMS)

Daily Runway Use (SDF)

Tower Comments September 2020

Day	Date	Time	Comment
tue	1-Sep-20		
wed	2-Sep-20		
thu	3-Sep-20	1300-1430	NORTH FLOW FOR WIND 300@11
fri	4-Sep-20		
sat	5-Sep-20		
sun	6-Sep-20		
mon	7-Sep-20		
tue	8-Sep-20	0930-1130	SWITCHED TO NORTH FLOW @ 1050. LATE SWITCH UNDOCUMENTED
tue	8-Sep-20	2200-0000	WIND AT 1000FT 140@20
wed	9-Sep-20	0000-0230	WIND AT 1000FT 140@20
thu	10-Sep-20		
fri	11-Sep-20		
sat	12-Sep-20		
sun	13-Sep-20		
mon	14-Sep-20	0930-1130	SOUTH FLOW FOR TAXIWAY CLOSURES
tue	15-Sep-20		
wed	16-Sep-20	2000-2130	NORTH FLOW FOR CIVIL UNREST AND LEO AIRCRAFT DOWNTOWN
thu	17-Sep-20	1300-1430	NORTH FLOW FOR WIND 030@12
fri	18-Sep-20		
sat	19-Sep-20	1830-0000	WIND 050@10G15
sun	20-Sep-20		
mon	21-Sep-20	0930-1100	LATE SWITCH DUE TO VOLUME AND WORKLOAD
mon	21-Sep-20	2200-0000	SOUTH FLOW, 15KT TAILWIND AT 500FT
tue	22-Sep-20	0000-0230	SOUTH FLOW, 15KT TAILWIND AT 500FT
tue	22-Sep-20	1300-1800	NORTH FLOW FOR CIVIL UNREST AND LEO AIRCRAFT DOWNTOWN
tue	22-Sep-20	2100-2130	NORTH FLOW FOR CIVIL UNREST AND LEO AIRCRAFT DOWNTOWN
wed	23-Sep-20	1300-1500	ARRIVING RWY29 DEPARTING RWY 17L/17R FOR CIVIL UNREST AND LEO A/C DOWNTOWN
thu	24-Sep-20	2000-2130	ARRIVING RWY29 DEPARTING RWY 17L/17R FOR CIVIL UNREST AND LEO A/C DOWNTOWN
fri	25-Sep-20	1300-1400	LATE SWITCH DUE TO VOLUME AND WORKLOAD
fri	25-Sep-20	1800-2130	NORTH FLOW FOR CIVIL UNREST AND LEO AIRCRAFT DOWNTOWN
sat	26-Sep-20	2100-0000	ARRIVING RWY29 DEPARTING RWY 17L/17R FOR CIVIL UNREST AND LEO A/C DOWNTOWN
sun	27-Sep-20		
mon	28-Sep-20	1630-2130	WIND 310@15G23
tue	29-Sep-20	2030-2130	NORTH FLOW FOR CIVIL UNREST AND LEO AIRCRAFT DOWNTOWN
wed	30-Sep-20		

Daily Runway Use Uncorrected (SDF) October 2020

Flow	Time	Thu 10/1	Fri 10/2	Sat 10/3	Sun 10/4	Mon 10/5	Tue 10/6	Wed 10/7	Thu 10/8	Fri 10/9	Sat 10/10	Sun 10/11	Mon 10/12	Tue 10/13	Wed 10/14	Thu 10/15	Fri 10/16	Sat 10/17	Sun 10/18	Mon 10/19	Tue 10/20	Wed 10/21	Thu 10/22	Fri 10/23	Sat 10/24	Sun 10/25	Mon 10/26	Tue 10/27	Wed 10/28	Thu 10/29	Fri 10/30	Sat 10/31	Time		
North Flow	0:00																																0:00		
	0:30																																	0:30	
	1:00																																	1:00	
	1:30																																	1:30	
	2:00																																	2:00	
	2:30																																	2:30	
South Flow	3:00																																	3:00	
	3:30																																	3:30	
	4:00																																	4:00	
	4:30																																	4:30	
	5:00																																	5:00	
	5:30																																	5:30	
	6:00																																	6:00	
	6:30																																	6:30	
	7:00																																	7:00	
	7:30																																		7:30
	8:00																																		8:00
	8:30																																		8:30
9:00																																		9:00	
North Flow	9:30																																	9:30	
	10:00																																	10:00	
	10:30																																	10:30	
	11:00																																	11:00	
	11:30																																	11:30	
	12:00																																	12:00	
South Flow	13:00																																	13:00	
	13:30																																	13:30	
	14:00																																	14:00	
	14:30																																	14:30	
	15:00																																	15:00	
	15:30																																	15:30	
	16:00																																	16:00	
	16:30																																	16:30	
	17:00																																		17:00
	17:30																																		17:30
	18:00																																		18:00
	North Flow	18:30																																	18:30
19:00																																		19:00	
19:30																																		19:30	
20:00																																		20:00	
20:30																																		20:30	
21:00																																		21:00	

- Preferred Flow
- DATIS Reported Conditions Indicate Support for Non-Preferred Flow
- DATIS Reported Conditions Do Not Indicate Support for Non-Preferred Flow
- South Flow is Preferred Flow from 09:30 Saturday - 09:30 Monday
- X Complaint

Source: Louisville International Airport
Aircraft Flight Tracking and Noise Management System (AFTNMS)

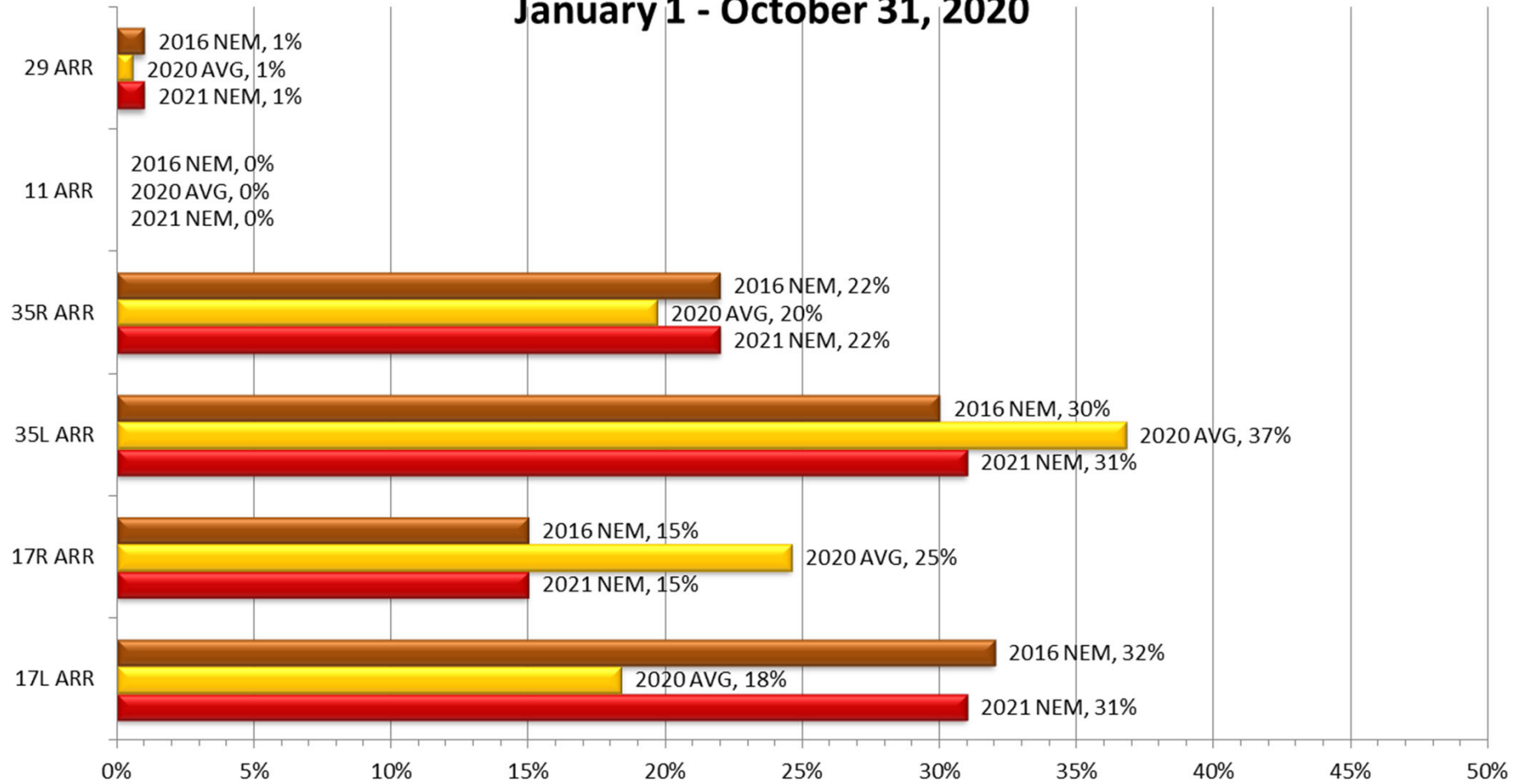
Daily Runway Use (SDF)

Tower Comments October 2020

Day	Date	Time	Comment
thu	1-Oct-20		
fri	2-Oct-20	0300-0700	Wind 320@09
fri	2-Oct-20	1300-2130	FCST Wind 350@08
sat	3-Oct-20		
sun	4-Oct-20	2200-0000	Wind 320@11
mon	5-Oct-20	0000-0300	Wind 330@08
tue	6-Oct-20	0930-1230	Rem South due to traffic and FCST Wind 190@08
tue	6-Oct-20	2200-0000	Wind 1000ft AGL FCST 230@20
wed	7-Oct-20	0000-0230	Wind 230@10
thu	8-Oct-20	0930-1230	Workload and Oversight
fri	9-Oct-20	2200-0000	Wind 190@08
sat	10-Oct-20	0000-0230	Wind 3000ft - 230@28
sun	11-Oct-20	1730-0000	Wind 050VRB070@10G18
mon	12-Oct-20	0000-0530	Wind 050VRB070@10G18
tue	13-Oct-20	0300-0700	Wind 300@09, Strong North Wind at altitude
tue	13-Oct-20	1400-1430	West Flow due to disabled A/C on RWY 17R
wed	14-Oct-20		
thu	15-Oct-20	0930-1000	Reason Not Documented
fri	16-Oct-20		
sat	17-Oct-20		
sun	18-Oct-20		
mon	19-Oct-20		
tue	20-Oct-20	1300-1600	Wind 010@05, Wet Runways
tue	20-Oct-20	2200-0000	Wind 1000ft AGL 220@28
wed	21-Oct-20	0000-0230	Wind 1000ft AGL 220@28
thu	22-Oct-20	0930-1130	Current and FCST Wind 200@09
fri	23-Oct-20	2030-2130	Wind 310@11G16
sat	24-Oct-20		
sun	25-Oct-20	0000-0300	
sun	25-Oct-20	1100-1330	Wind 050@07, Wet Runways, -RA
mon	26-Oct-20	1930-2130	Wind 360@08, Wet Runways
tue	27-Oct-20	1930-2130	Wind 360@08
wed	28-Oct-20		
thu	29-Oct-20		
fri	30-Oct-20	1300-1830	FCST Wind 330@09
sat	31-Oct-20		

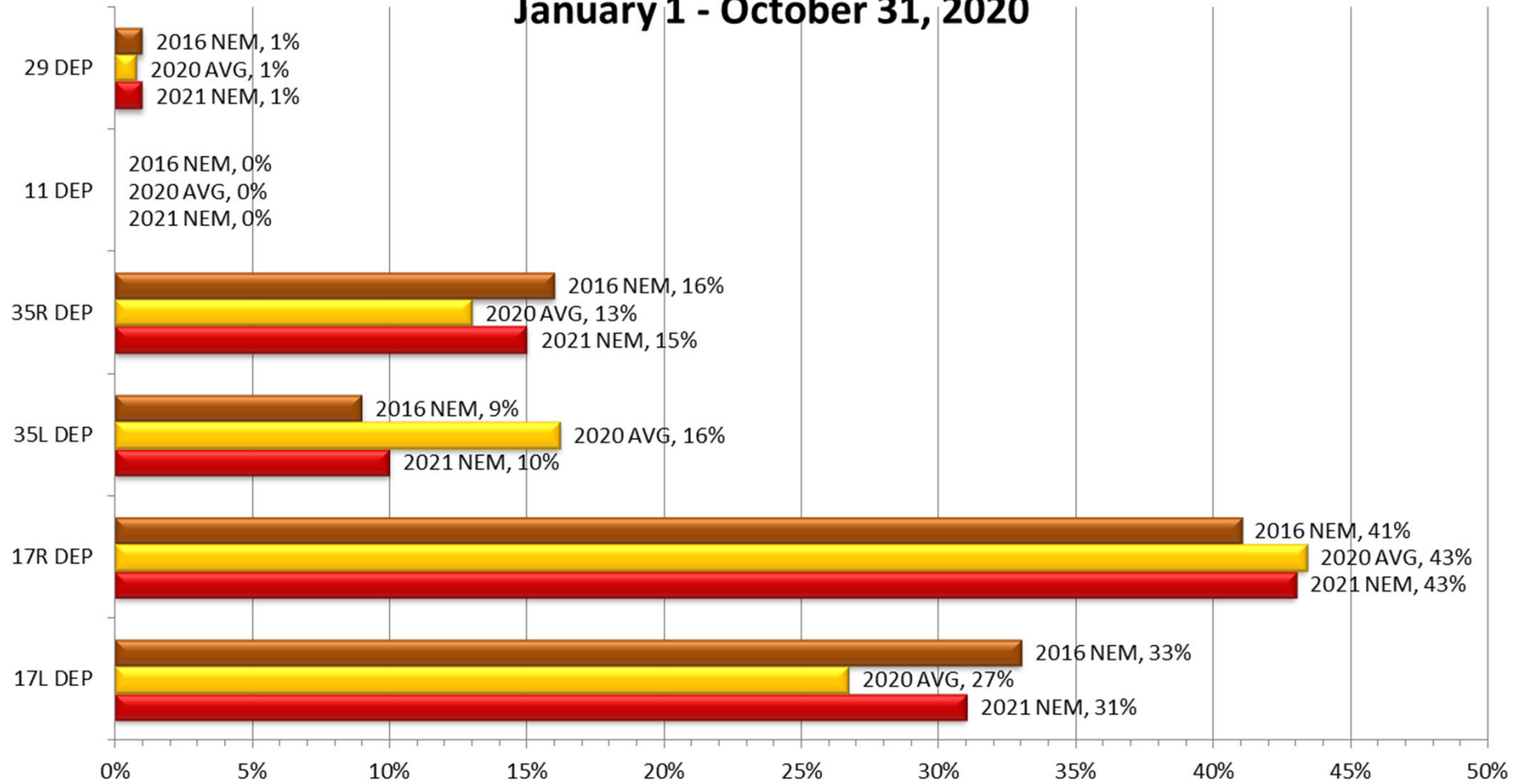
Runway Use (SDF Arrivals)

NEM vs. Actual January 1 - October 31, 2020



Runway Use (SDF Departures)

NEM vs. Actual January 1 - October 31, 2020



Runway Use 0930L-1230L(SDF)

As of October 31, 2020

Arrival Percentage by Runway

Departure Percentage by Runway

	11	17L	17R	29	35L	35R	% From South	Arrival Count	11	17L	17R	29	35L	35R	% To North	Departure Count
Oct-18	0	16	19	2	37	26	63	1057	0	18	16	3	18	44	62	476
Nov-18	0	19	15	5	37	23	60	1039	0	25	13	6	7	48	55	446
Dec-18	0	24	23	0	33	19	52	1099	0	26	19	1	5	49	54	427
Jan-19	0	13	18	8	38	22	60	946	0	21	14	7	6	51	57	371
Feb-19	0	15	18	0	43	24	67	852	0	24	11	2	18	46	64	344
Mar-19	0	18	18	0	43	20	63	853	0	23	13	2	14	48	62	337
Apr-19	0	22	31	2	27	18	45	941	0	31	22	5	11	31	42	369
May-19	0	25	12	0	37	26	63	1097	0	24	12	1	13	50	63	512
Jun-19	0	28	27	6	17	21	38	925	0	33	23	7	5	31	36	401
Jul-19	0	20	24	0	32	24	56	1033	0	23	20	0	12	46	58	459
Aug-19	0	10	18	0	50	23	73	1013	0	12	11	0	36	48	84	465
Sep-19	0	10	21	0	41	28	69	946	0	9	27	0	18	46	64	470
Oct-19	0	17	17	0	33	32	65	1109	0	18	17	2	22	41	63	499
Nov-19	0	17	27	6	30	20	50	969	0	19	29	4	12	36	48	418
Dec-19	0	17	19	3	39	23	62	1213	0	20	16	3	8	53	61	473
Jan-20	0	18	16	0	46	20	66	1022	0	20	16	0	20	43	63	457
Feb-20	0	10	14	0	60	16	76	899	0	20	11	0	34	34	68	438
Mar-20	0	22	23	4	43	7	50	868	0	33	16	5	27	17	44	359
Apr-20	0	11	36	2	35	15	50	751	0	23	25	5	17	32	49	133
May-20	0	19	41	0	23	17	40	691	0	21	36	0	7	36	43	148
Jun-20	0	23	33	0	28	16	44	875	0	34	24	0	15	28	43	167
Jul-20	0	11	16	0	53	20	73	851	0	15	9	0	34	41	75	207
Aug-20	0	17	33	0	34	16	50	811	0	28	21	0	17	34	51	212
Sep-20	0	6	18	0	46	30	76	889	0	11	20	0	21	47	68	211
Oct-20	0	13	24	0	51	13	64	901	0	19	19	0	38	23	61	217
Monthly Avg	0	17	22	2	38	21	59	946	0	22	18	2	17	40	58	375

Gate Compliance by Runway

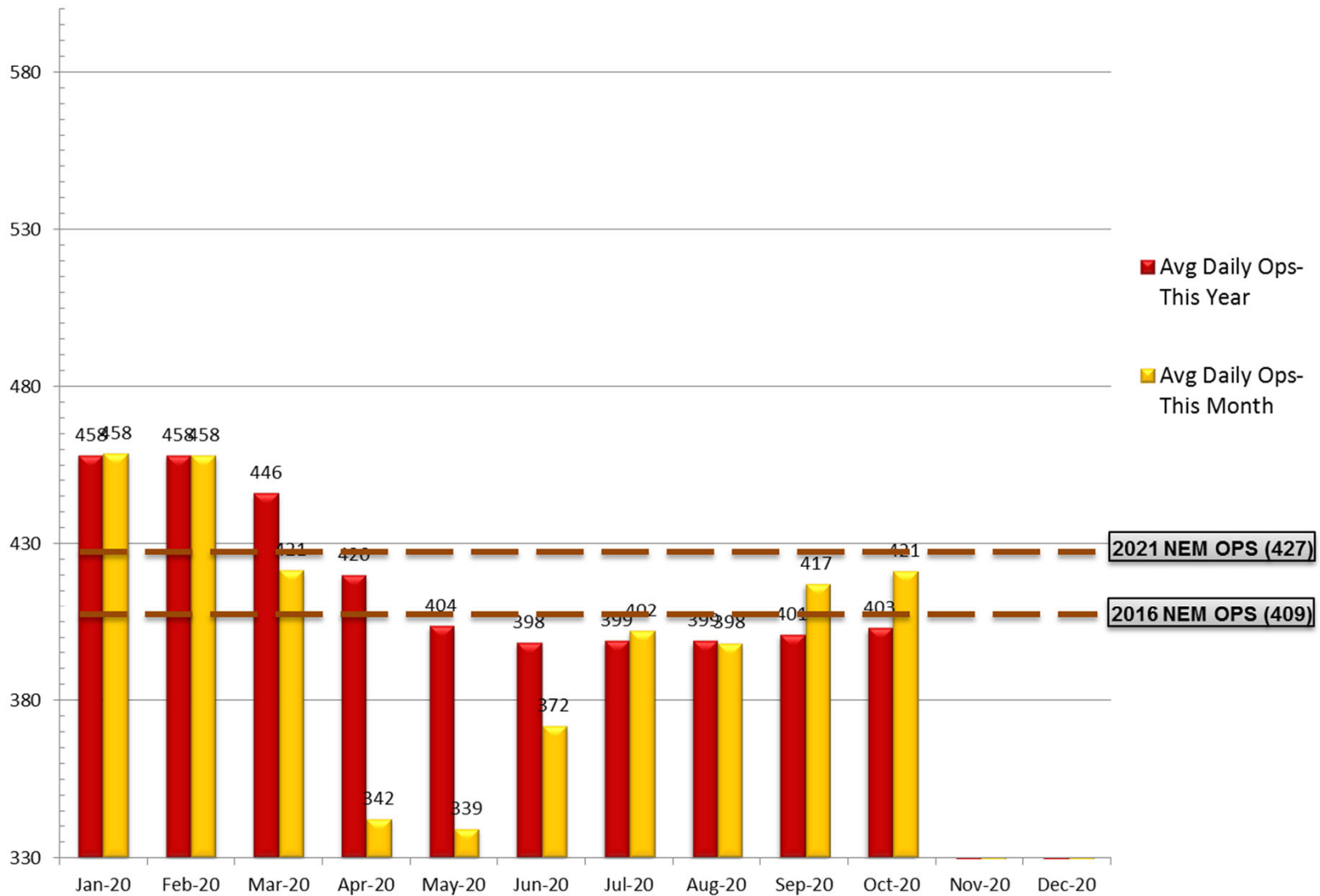
As of October 31, 2020

Month	ARRIVALS Percent Compliant					Departure Percent Compliant				
	17L	17R	35L	35R	ARR AVG	17L	17R	35L	35R	DEP AVG
Nov-18	92%	96%	93%	91%	93%	79%	87%	76%	84%	82%
Dec-18	88%	94%	92%	91%	91%	81%	88%	74%	85%	82%
Jan-19	91%	95%	93%	92%	93%	83%	89%	77%	78%	82%
Feb-19	93%	96%	91%	89%	92%	76%	89%	72%	75%	78%
Mar-19	86%	93%	88%	89%	89%	76%	86%	70%	85%	79%
Apr-19	89%	93%	89%	89%	90%	77%	85%	72%	83%	79%
May-19	90%	91%	89%	88%	90%	73%	86%	78%	87%	81%
Jun-19	91%	94%	91%	90%	92%	83%	88%	78%	81%	83%
Jul-19	90%	96%	90%	89%	91%	87%	89%	77%	91%	86%
Aug-19	90%	94%	89%	88%	90%	90%	93%	69%	89%	85%
Sep-19	89%	92%	88%	89%	90%	89%	92%	79%	92%	88%
Oct-19	92%	93%	90%	91%	92%	88%	93%	75%	85%	85%
Nov-19	89%	92%	90%	92%	91%	79%	91%	74%	88%	83%
Dec-19	91%	95%	92%	93%	93%	82%	91%	75%	84%	83%
Jan-20	93%	95%	93%	91%	93%	76%	90%	71%	87%	81%
Feb-20	89%	94%	94%	93%	93%	80%	90%	78%	85%	83%
Mar-20	92%	94%	93%	90%	92%	78%	84%	78%	83%	81%
Apr-20	81%	94%	89%	91%	89%	70%	89%	73%	79%	78%
May-20	89%	95%	91%	93%	92%	74%	86%	74%	80%	79%
Jun-20	89%	94%	89%	87%	90%	76%	90%	70%	79%	79%
Jul-20	89%	94%	90%	90%	91%	83%	89%	54%	76%	76%
Aug-20	89%	94%	90%	90%	91%	85%	86%	64%	77%	78%
Sep-20	88%	94%	90%	90%	91%	84%	89%	64%	86%	81%
Oct-20	91%	94%	92%	92%	92%	76%	91%	73%	85%	81%
24 Month Avg.					91%					81%

Source: Louisville International Airport
Aircraft Flight Tracking and Noise Management System (AFTNMS)

Operations (SDF)

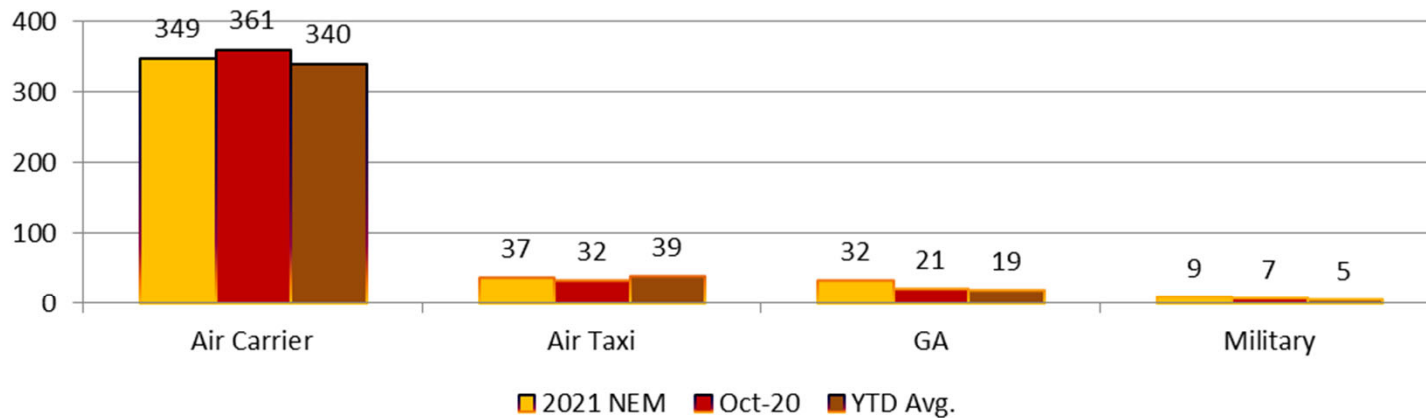
As of October 31, 2020



Operations and Landing (SDF)

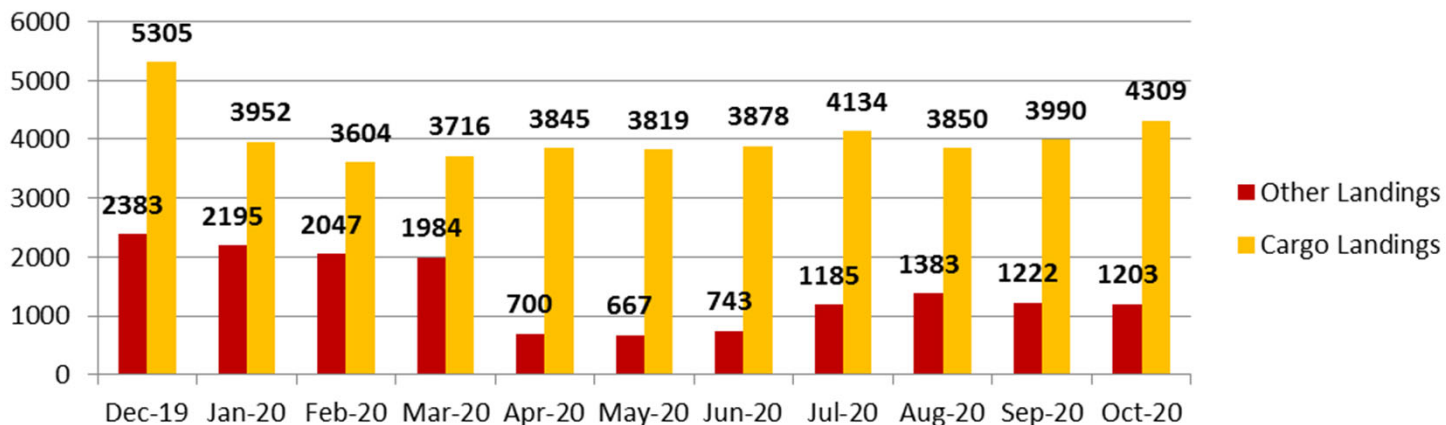
As of October 31, 2020

Average Day Operations by Category

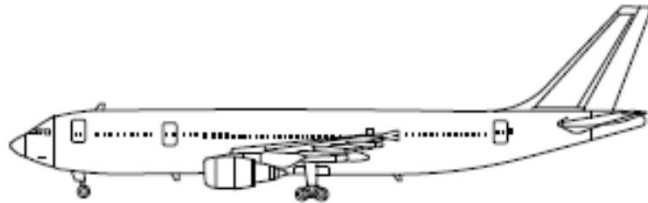


- **Air Carrier.** (AC) Aircraft with seating capacity of more than 60 seats or a maximum payload capacity of more than 18,000 pounds, carrying passengers or cargo for hire or compensation. This includes US and foreign-flagged carriers.
- **Air Taxi.** (AT) Aircraft designed to have a maximum seating capacity of 60 seats or less or a maximum payload capacity of 18,000 pounds or less, carrying passengers or cargo for hire or compensation.
- **General Aviation.** (GA) Takeoffs and landings of all civil aircraft, except for air carriers or air taxis.
- **Military.** (MIL) Operations by all classes of military takeoffs and landings at FAA and FTC facilities.

Landings Cargo/Other



Sample Aircraft Types (SDF)



A300
Air Carrier Cargo



B767
Air Carrier Cargo



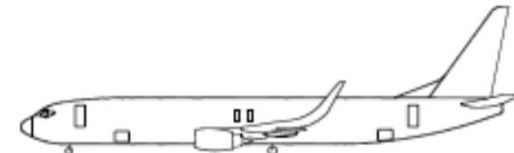
E135/45
Air Taxi Pax



B757
Air Carrier Cargo



MD11
Air Carrier Cargo



B737
Air Carrier Pax



CRJ2
Air Taxi Pax



E170
Air Carrier Pax



MD80
Air Carrier Pax



CRJ9
Air Carrier Pax