

# Rising to the Challenge

## Year End Media Briefing

Dan Mann, A.A.E.  
Executive Director



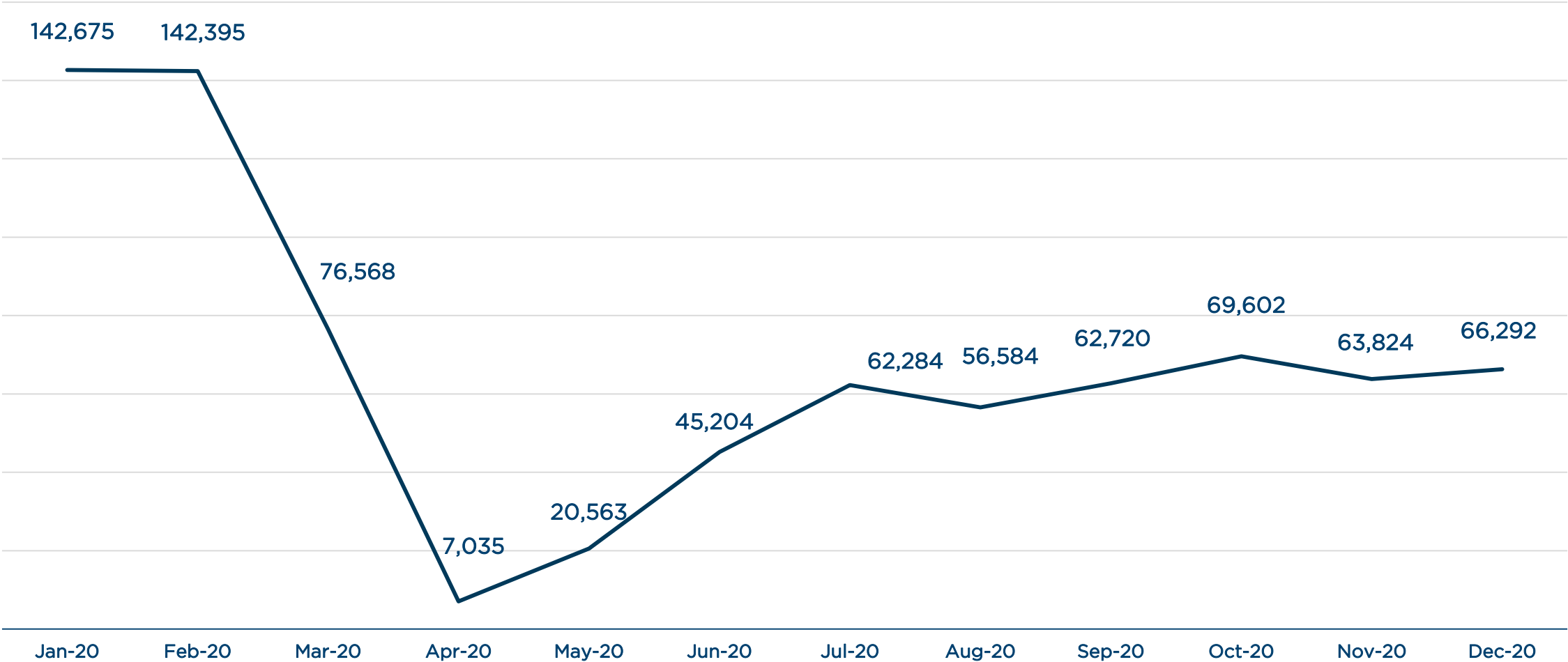
# Simply the Best

- Great People
- Excellent Customer Service
- Invest in Facilities
- Operate with Fiscal Integrity



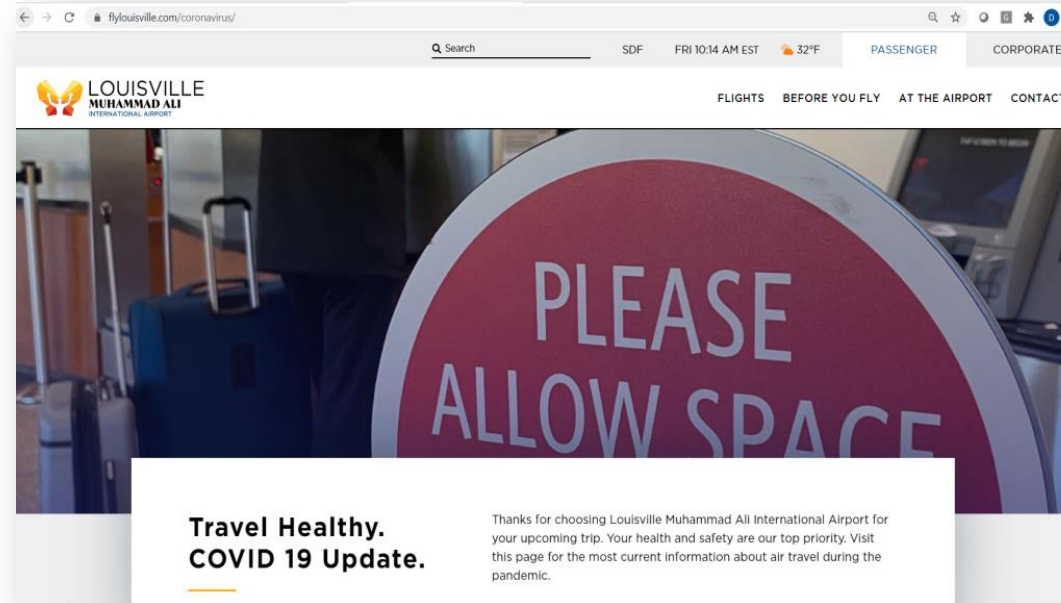
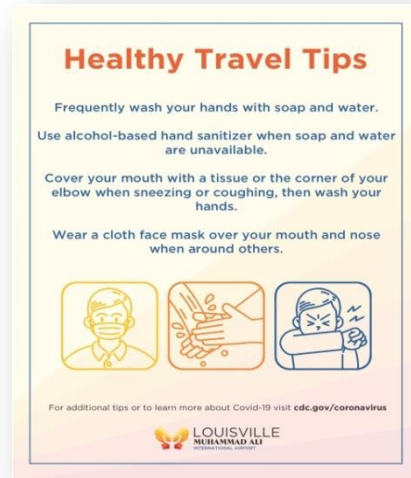
# SDF Enplanements 2020

January 2020 – December 2020 Passenger Enplanements



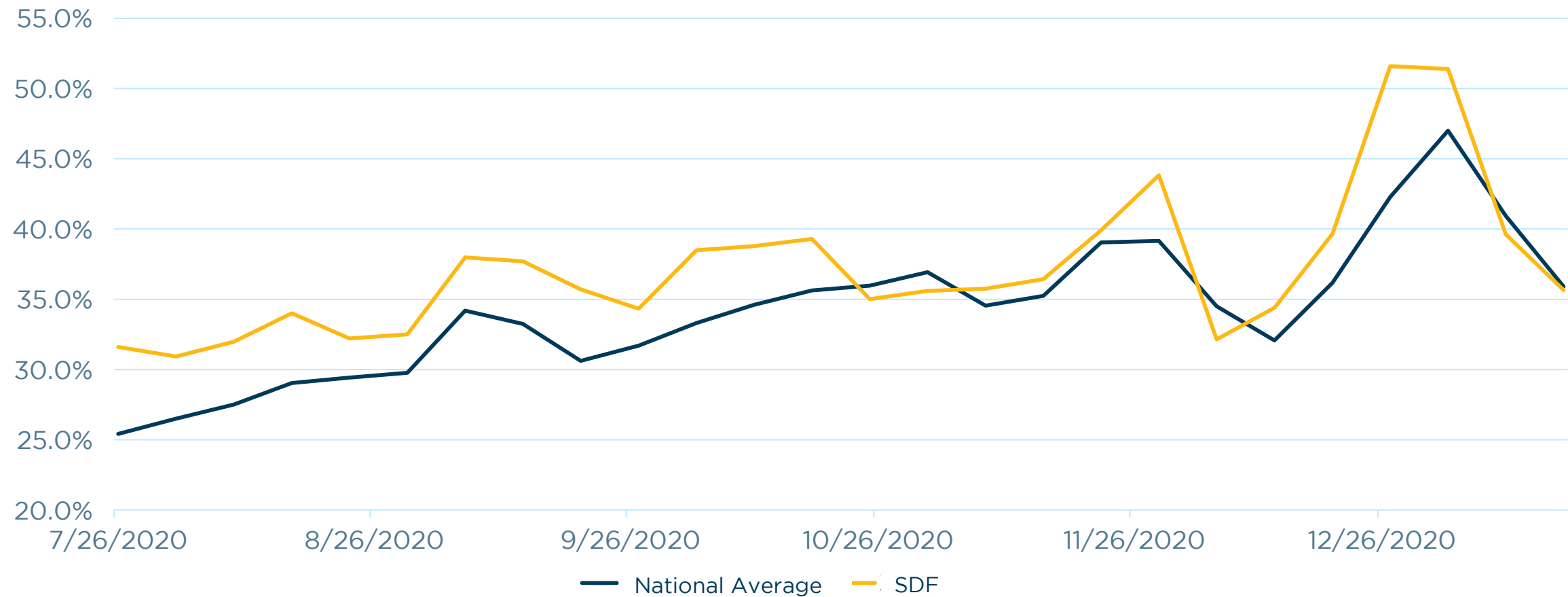


# Pandemic Response



# SDF Passenger Demand Beating US Average

TSA Throughput vs Previous Year



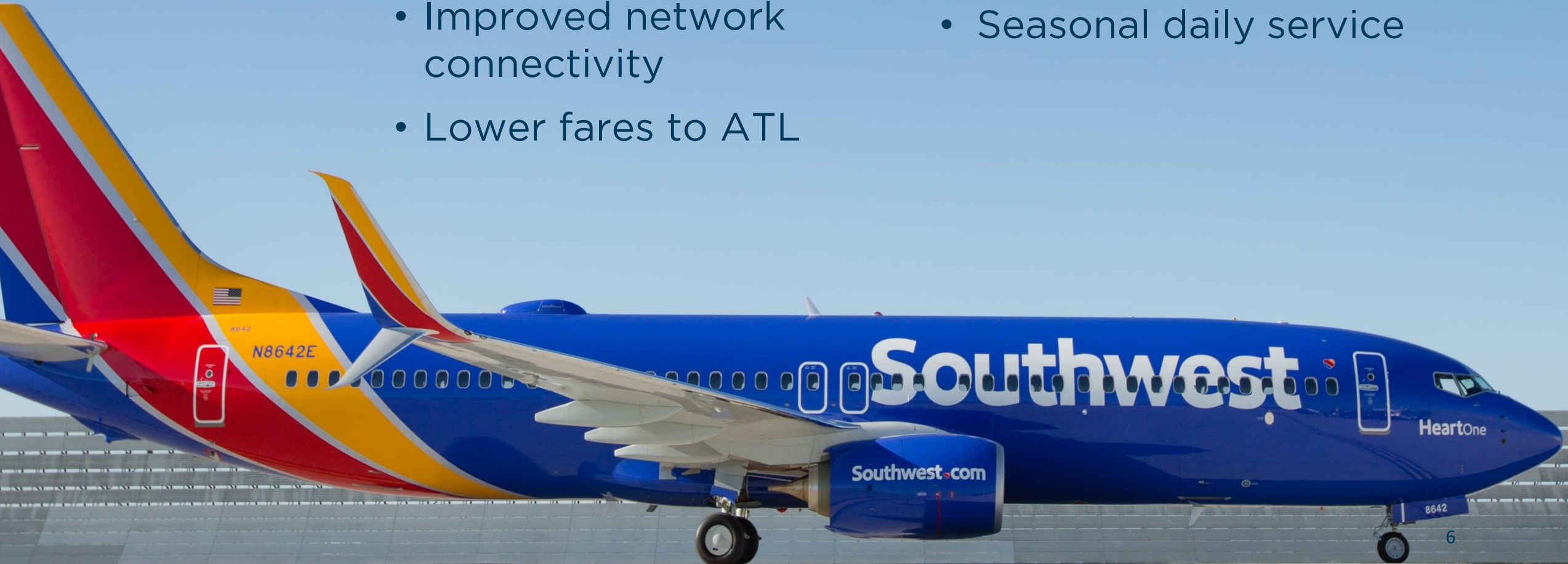
# New Southwest Flights

## Atlanta

- 1-2x daily
- Improved network connectivity
- Lower fares to ATL

## Fort Myers

- Initial Holiday Peak flights
- Seasonal daily service







**NEW**  
**Nonstop Flight!**

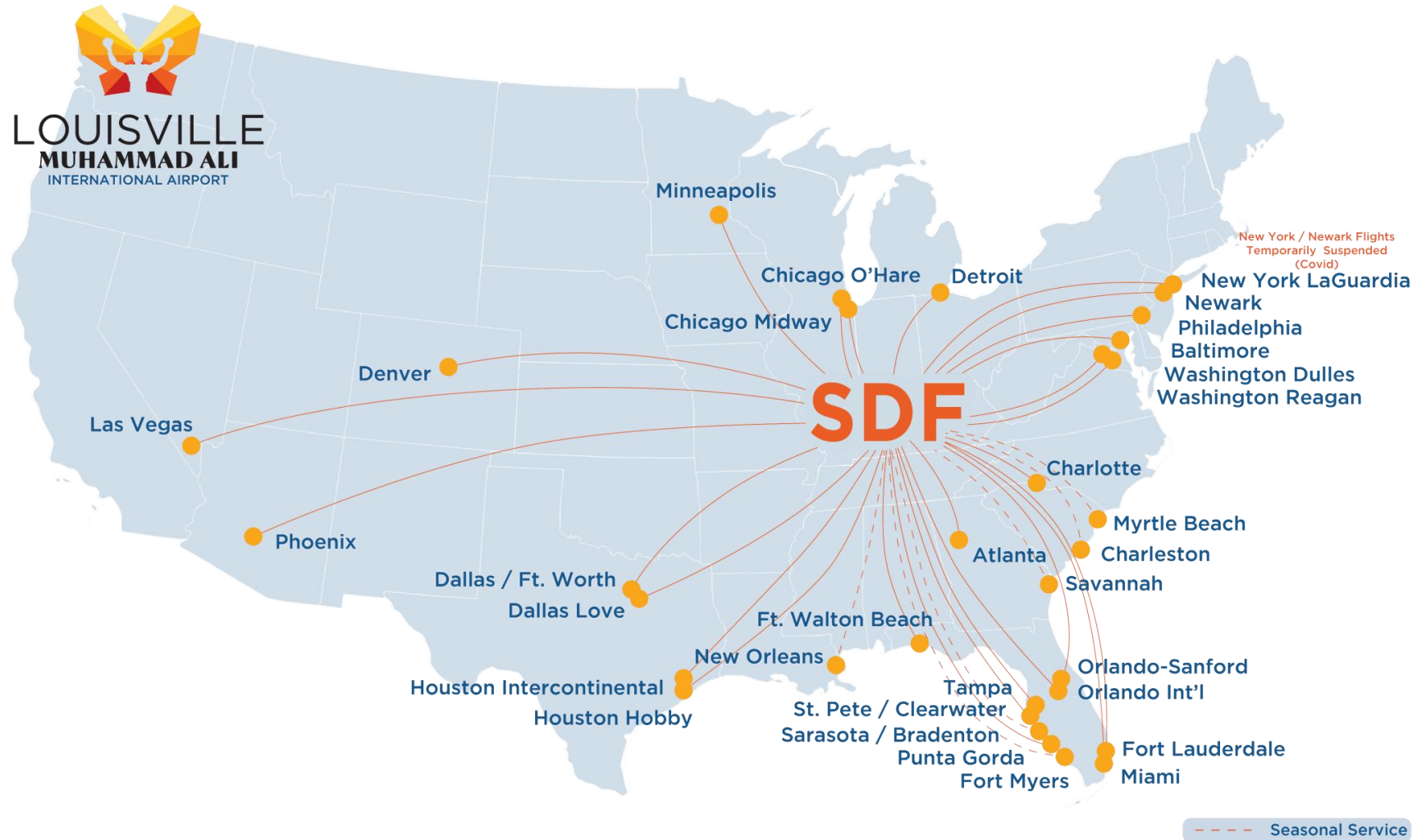
---

**Louisville** ✈️ **Charleston**

Beginning May 28, 2021

 **allegiant**.com

# Route Recovery





# Cargo / Logistics Leader

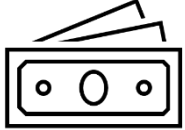
- 4<sup>th</sup> busiest cargo airport in the world
- 2<sup>nd</sup> busiest cargo airport in North America
- Home to UPS Worldport and base of UPS Airlines
- Critical role in vaccine distribution
- Over 380 daily flights



# The Vaccine Arrives at SDF



# Powering the Regional Economy



**\$10.4 Billion** Economic Impact



**\$451.1 Million** contributed to State and Local Taxes



**\$1 of every \$7** in Louisville Metro tax revenue from airport operations



**82,723 Jobs** – 1 in 8 jobs in Louisville Metro from airport operations



**SDF**  
**NEXT**



**2020**



# Infrastructure Investment Tripled

- **\$91.1 Million** capital projects and equipment
- **566** jobs generated
- **43** companies
- **9** projects completed





# New Rental Car Facility





# Park Assist & Premier Lot

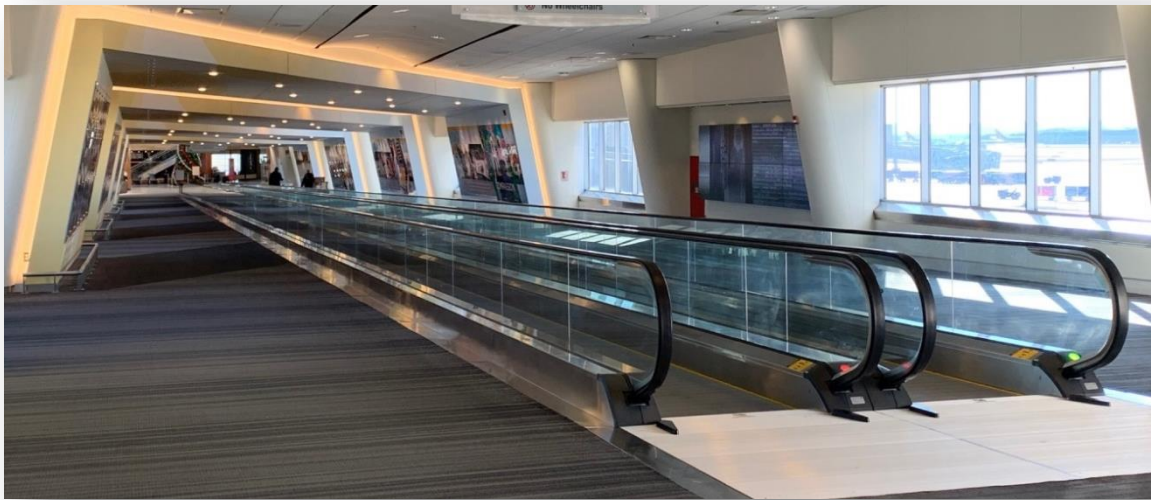




# New Covered Walkways



# Improved Terminal Access









# SDF NEXT



## 2021



# 2021 Projects

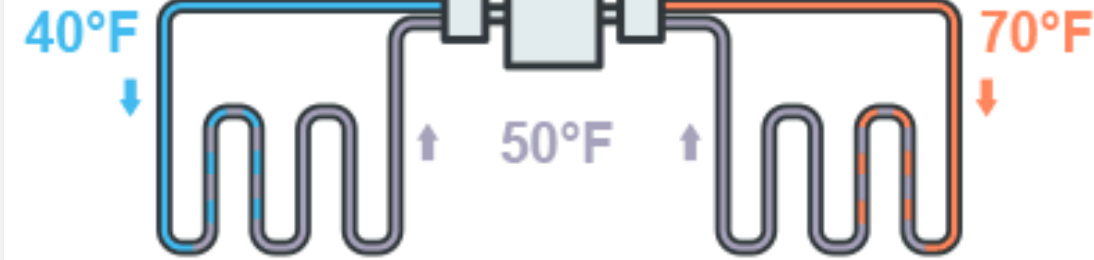
## \$75 Million

- Replace 17 Passenger Boarding Bridges
- Upgrade Terminal Elevators & Escalators
- Replace Mechanical Infrastructure
- Extend Taxiways B & L
- Improve Airfield Electrical Systems

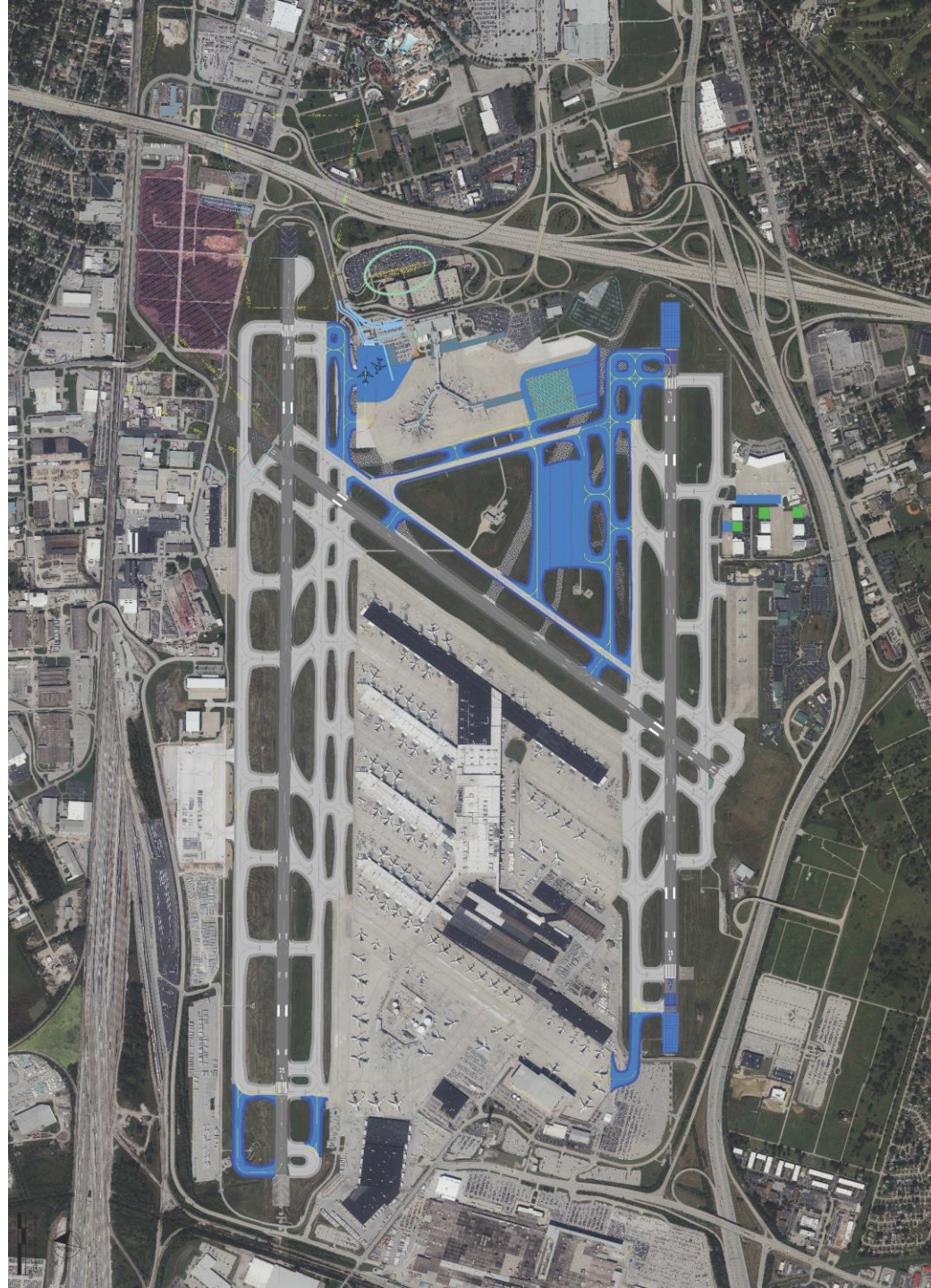














# Moving Forward in Confidence

- Great People
- Excellent Customer Service
- Invest in Facilities
- Operate with Fiscal Integrity



# Rising to the Challenge

## Year End Media Briefing

Dan Mann, A.A.E.  
Executive Director

