

**Community Noise Forum**  
**Monday, January 24, 2022**  
**Agenda**

- I. Call to order: 6:00 PM
- II. Approval of November 22, 2021, Minutes
- III. Noise Mitigation Tax Credit Proposal
- IV. Louisville Mohammad Ali International Airport Master Plan
- V. Active Noise Cancellation Grant Update
- VI. Airspace Project Update
- VII. UPS Hanger Ground Noise Study
- VIII. Part 150 NCP
  - A. Noise Insulation Program
  - B. Contraflow Exceptions
- IX. Current Noise Concerns
  - A. Noise Concerns/Complaints
  - B. Runway Utilization
  - C. Construction and Maintenance Activity
- X. Guest Comments
- XI. Announcements
- XII. Next Meeting: March 21, 2022
- XIII. Adjournment

**COMMUNITY NOISE FORUM (CNF)**  
**Monday, November 22, 2021**

**Members**

Brian Sinnwell, LRAA  
Mary Rose Evans, LRAA Board  
Bob Slattery, LRAA  
Greg Petto, FAA

Pat Gould, Northeast  
Jonathan Bonds, UPS  
John Sistarenik, ANA  
Tom Foote, UPS

**Guests**

Adam Thomas, Audubon Park  
Edward Mansfield, Merriwether  
Bill Reese, UPS

Rose Nett, Old Louisville  
Nicole George, Metro 21

- I. **Call to order:** The meeting was called to order at 6:00 p.m. by John Sistarenik. The March, May and July meeting notes were reviewed with no changes and approved.
- II. **Noise 101 Session Report:** At the July meeting Edward Mansfield requested a Noise 101 briefing for the Merriweather neighborhood. On October 19<sup>th</sup> Mary Rose Evans and Bob Slattery along with Wendy Harrower from the QuieterHome Program attended the Merriweather neighborhood meeting at the Amvets Preston Post located at 1567 S Shelby Street. Approximately 45 individuals attended the meeting. Overall, the meeting was well received. However, Bob felt that most people in attendance were expecting the meeting to be more focused on the QuieterHome Program. Mary Rose thought the meeting went very well and people learned a lot about how the Noise Compatibility Program works.
- III. **Active Noise Cancellation Grant Update:** In July the LRAA submitted an application to the FAA for an Environmental Mitigation Pilot Program grant to design, install, optimize, and maintain an active noise control system. Bob informed the group that the FAA HQ anticipates making a decision by the end of the calendar year.
- IV. **Airspace Project Update:** Jonathan Bond updated the group on the current status of the airspace project. The project has been funded and a working group was formed. The Louisville TRACON (Control Tower) and Indianapolis Center have been designated co-leads of the working group. Meetings are ongoing and an extensive meeting is currently planned for late January. The project has been ongoing for approximately 6 years and he would expect another 2 to 2 1/2 years before we start to see any benefits. UPS has completed simulator trials that were focused on the flyability of arrival and departure procedures. Jonathan is hopeful that an Environmental Community Outreach person from the FAA will be assigned to the project in the next couple of months. Bill Reese of UPS will be replacing Jonathan on the CNF after the January meeting.

- V. **UPS Hangar Overview:** Tom Foote introduced Sherrie Derringer who is the project engineer for the new UPS hangar project. Sherrie gave an excellent presentation on the new maintenance hangar including facility statistics, site plans, project timeline, and sustainability initiatives. Mary Rose asked about the plans for noise containment after the aircraft are repaired. Tom replied that engine run-ups will be required to be conducted at the location they are currently conducted. Sherrie replied blast fences will be included as part of the project. Bob Slattery replied that a ground noise study that looks at the noise associated with the new hangar was conducted. A draft report is currently under review. However, some takeaways from the draft report are that noise levels are not expected to be any greater than the levels associated with current operations. The draft report also indicates that the hangar would provide some noise shielding for the aircraft parked in front of the hangar. Bob would expect to have results of the report for the next meeting. Councilwoman George asked when we could expect to see the draft report and if there would be an effort to connect with the Beechmont Neighborhood Association. Bob said results are expected to be presented at the January CNF meeting and agreed providing information to Beechmont would be beneficial. Councilwoman George asked if there would be an increase in the frequency of noise related to the hangar. Bob replied that there is not expected to be an increase in operations due to the construction of the hangar. Councilwoman George said that she experiences a considerable amount of noise between 3:00 a.m. and 5:00 a.m., she loves her home, she is very proud of the work at the airport and understands this is part of that. I am very worried about my neighbors in east Beechmont who already shoulder a lot of the environmental concerns in the area. I just want to make sure that we are not going to hear and an increased frequency of noise. Bob replied that the construction of the hangar does not mean an increase in flight operations. However, some of the maintenance activities currently occurring at the south end will now occur at the north end. Tom Foote replied that the majority of activity at the new hangar would be aircraft taxiing to the ramp which is very much different than when an aircraft is departing at full thrust. The hangar location does not mean more departures. Councilwoman George said that she thinks this is exciting work, but you have to understand that neighbors are going to be concerned because there are already concerns about existing noise.

VI. **Part 150 NCP:**

- A. **Noise Insulation Program: Residential** – This project is to sound insulate residences within the DNL 65 contour according to the 2021 Noise Exposure Map. Construction is complete for the first contract of 32 families. Construction is also complete for the second contract of 40 families. Measurement walkthroughs were completed in early August for a third contract consisting of 35 families. It is anticipated that construction will begin in January 2022 for the third group. Bids were received on September 30<sup>th</sup> for a fourth contract of 20 families. That contract is expected to be awarded at the December meeting of the LRAA Board. Homeowner workshops were held on August 31 and October 27<sup>th</sup> for homeowners in groups 4 and 5. Pre-acoustical testing is currently underway.

- B. Contraflow Exceptions:** Contraflow for July was 70% for arrivals from the south and 76% for departures to the south. In August arrivals from the south were 74% and departures to the south were 88%. Contraflow in September was 63% for arrivals and 90% for departures. Daily summaries for each month are contained in the handout. For calendar year 2021 arrivals from the south are at 68% and departures to the south are 75%. A monthly summary going back 8 years is included in the handout.

**VII. Current Noise Concerns:**

- A. Report on Noise Concerns/Complaints:** A total of 16 comments were received in July. In August 11 comments were received. 11 comments were also received in September. Comments and locations are contained in the handout. A chart that shows the number of operations per complaint has been added to the Noise Comment Report.
- B. Runway Utilization:** Runway utilization percentages for July, August and September are contained in the handout. Daily runway utilization and comments from the Air Traffic Control Tower are also included in the handout.
- C. Construction and Maintenance Activity:** Brian Sinnwell reported that most airfield projects are wrapping up for the year and it was a successful year for construction and pavement projects. The project to connect the UPS ramp with taxiway "A" is ongoing but does not impact traffic on the airfield. The geothermal project is also ongoing but does not impact air traffic. The Airport Layout Plan (ALP) portion of the Master Plan is still under review at the FAA. Brian is looking at having the project consultant at the January CNF meeting to review the Master Plan project and process.

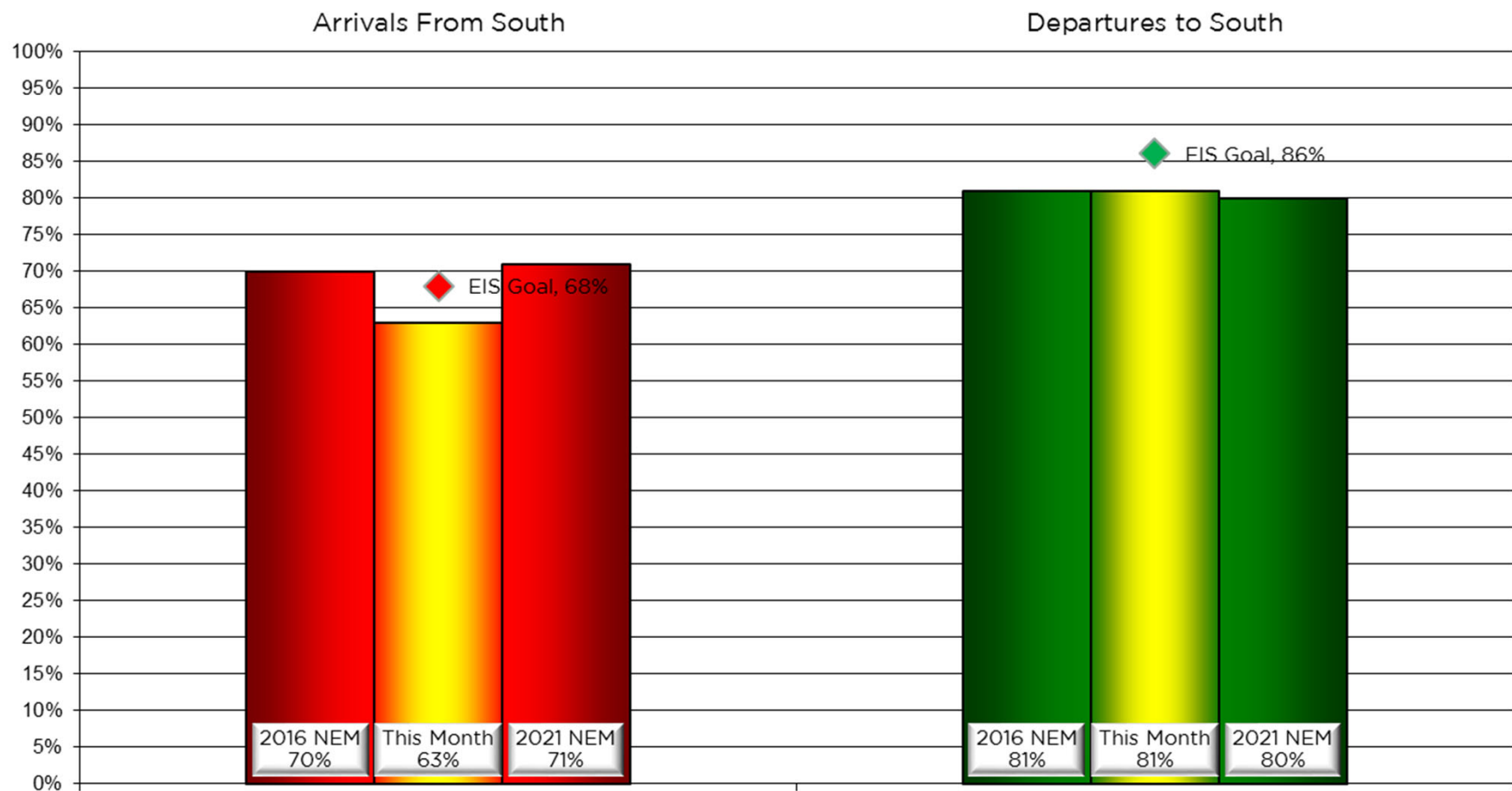
**VIII. Guest Comments:** None

**IX. Announcements:** None

**X. Next Meeting:** January 24, 2022

**XI. Adjournment:** A motion was made to adjourn the meeting at 6:53 p.m.

## Monthly Contraflow October 1-29, 2021



# Nightly Runway Use Summary – October 2021

(from 10:00 PM date list in first column to 7:00 AM the following morning)

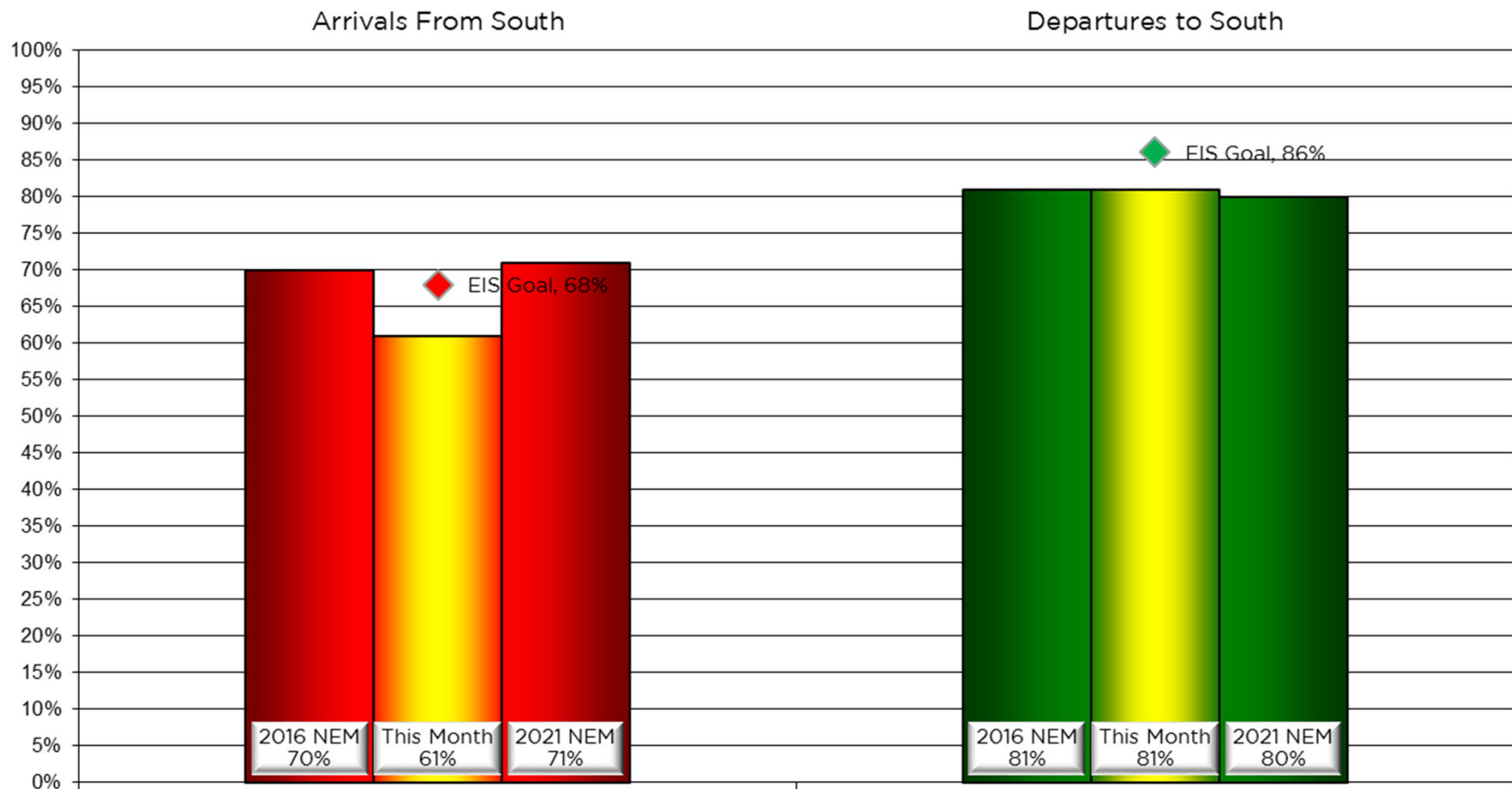
		% of all arrivals from the south										% of all departures to the south									
Date	Day	* in compliance	Runway #						Unknown Runway Use	Notes / Comments		** in compliance	Runway #						Unknown Runway Use	Notes / Comments	
			11	17L	17R	29	35L	35R					11	17L	17R	29	35L	35R			
10/01/21	Fri	94%			2	4		61	33	0		95%			40	55		3	2	0	
10/02/21	Sat																				
10/03/21	Sun																				
10/04/21	Mon	95%			1	4		60	35	0		88%			32	56		7	5	0	
10/05/21	Tue	93%			3	4		62	31	0		86%			32	54		10	4	0	
10/06/21	Wed	0%			41	59				0	110-150@5-13kts,ra	100%			40	60				0	
10/07/21	Thu	94%			2	4		59	35	0		91%			39	52		6	3	0	
10/08/21	Fri	91%			3	6		56	35	0		97%			43	54		2	1	0	
10/09/21	Sat																				
10/10/21	Sun																				
10/11/21	Mon	0%			43	57				0	150-210@12-14kts,g23	100%			33	67				0	
10/12/21	Tue	92%			2	6		58	34	0		89%			40	49		8	3	0	
10/13/21	Wed	0%			41	59				0	130-160@4-8kts,g17	100%			37	63				0	
10/14/21	Thu	0%			42	58				0	130-150@4-7kts	100%			42	58				0	
10/15/21	Fri	100%						62	38	0		0%						64	36	0	290-330@7-19kts,g28,ra
10/16/21	Sat																				
10/17/21	Sun																				
10/18/21	Mon	92%			4	4		58	34	0		90%			34	56		6	4	0	
10/19/21	Tue	90%			4	6		59	31	0		90%			33	57		7	3	0	
10/20/21	Wed	0%			41	59				0	120-170@5-8kts	100%			41	59				0	
10/21/21	Thu	95%			1	4		56	39	0		91%			36	55		6	3	0	
10/22/21	Fri	91%			6	3		54	37	0		94%			49	45		3	3	0	
10/23/21	Sat																				
10/24/21	Sun																				
10/25/21	Mon	100%						57	43	0		0%						64	36	0	310-330@9-12kts,ra
10/26/21	Tue	93%			3	4		59	34	0		90%			32	58		7	3	0	
10/27/21	Wed	13%			38	49		9	4	0	090-110@7-11kts	100%			38	62				0	
10/28/21	Thu	0%			43	57				0	070/130@3-7kts	100%			38	62				0	
10/29/21	Fri	100%						58	42	0		0%						63	37	0	270-320@7-8kts,ra

Preferred Flow

DATIS Reported Conditions Indicate  
Support for Non-Preferred Flow

DATIS Reported Conditions Do Not Indicate  
Support for Non-Preferred Flow

## Monthly Contraflow November 1-30, 2021



# Nightly Runway Use Summary – November 2021

(from 10:00 PM date list in first column to 7:00 AM the following morning)

		% of all arrivals from the south											% of all departures to the south										
Date	Day	* in	Runway#							Unknown	Notes /	Runway	Notes /	Runway	Runway#							Unknown	Notes /
		compliance	11	17L	17R	29	35L	35R	Use	compliance					11	17L	17R	29	35L	35R	Use	compliance	
11/01/21	Mon	100%							60	40	0		0%							60	40	0	290-340@5-8kts,ra
11/02/21	Tue	93%			3	4			57	36	0		90%			34	56			6	4	0	
11/03/21	Wed	95%			2	3			62	33	0		91%			31	60			7	2	0	
11/04/21	Thu	95%			2	3			58	37	0		90%			35	55			6	4	0	
11/05/21	Fri	92%			1	7			55	37	0		94%			36	58			3	3	0	
11/06/21	Sat																						
11/07/21	Sun																						
11/08/21	Mon	0%			40	60					0	130-140@4-6kts	100%			37	63					0	
11/09/21	Tue	91%			2	7			54	37	0		91%			36	55			6	3	0	
11/10/21	Wed	0%			41	59					0	120-150@3-7kts	100%			40	60					0	
11/11/21	Thu	96%			1	3			61	35	0		91%			36	55			7	2	0	
11/12/21	Fri	95%			1	4			60	35	0		91%			37	54			5	4	0	
11/13/21	Sat																						
11/14/21	Sun																						
11/15/21	Mon	0%			40	60					0	120-150@4-6kts	100%			39	61					0	
11/16/21	Tue	0%			40	60					0	170-180@8-10 kts	100%			35	65					0	
11/17/21	Wed	21%			37	42			16	5	0	180-290@9-17kts,g23,ra	4%			1	3			57	39	0	300-340@7-17kts,g26,ra
11/18/21	Thu	95%			1	4			60	35	0		85%			33	52			11	4	0	
11/19/21	Fri	94%			1	5			57	37	0		94%			36	58			4	2	0	
11/20/21	Sat																						
11/21/21	Sun																						
11/22/21	Mon	95%			2	3			52	43	0		83%			30	53			10	7	0	
11/23/21	Tue	0%			43	57					0	120-150@4-7kts	100%			37	63					0	
11/24/21	Wed	0%			43	57					0	190-220@11-19kts,g25	100%			29	71					0	
11/25/21	Thu	100%							85	15	0		0%							65	35	0	280-310@8-13kts,g23
11/26/21	Fri	92%			3	5			56	36	0		94%			37	57			5	1	0	
11/27/21	Sat																						
11/28/21	Sun																						
11/29/21	Mon	0%			36	64					0	180-240@8-11kts,g17	100%			34	66					0	
11/30/21	Tue	96%				4			61	35	0		86%			35	51			11	3	0	

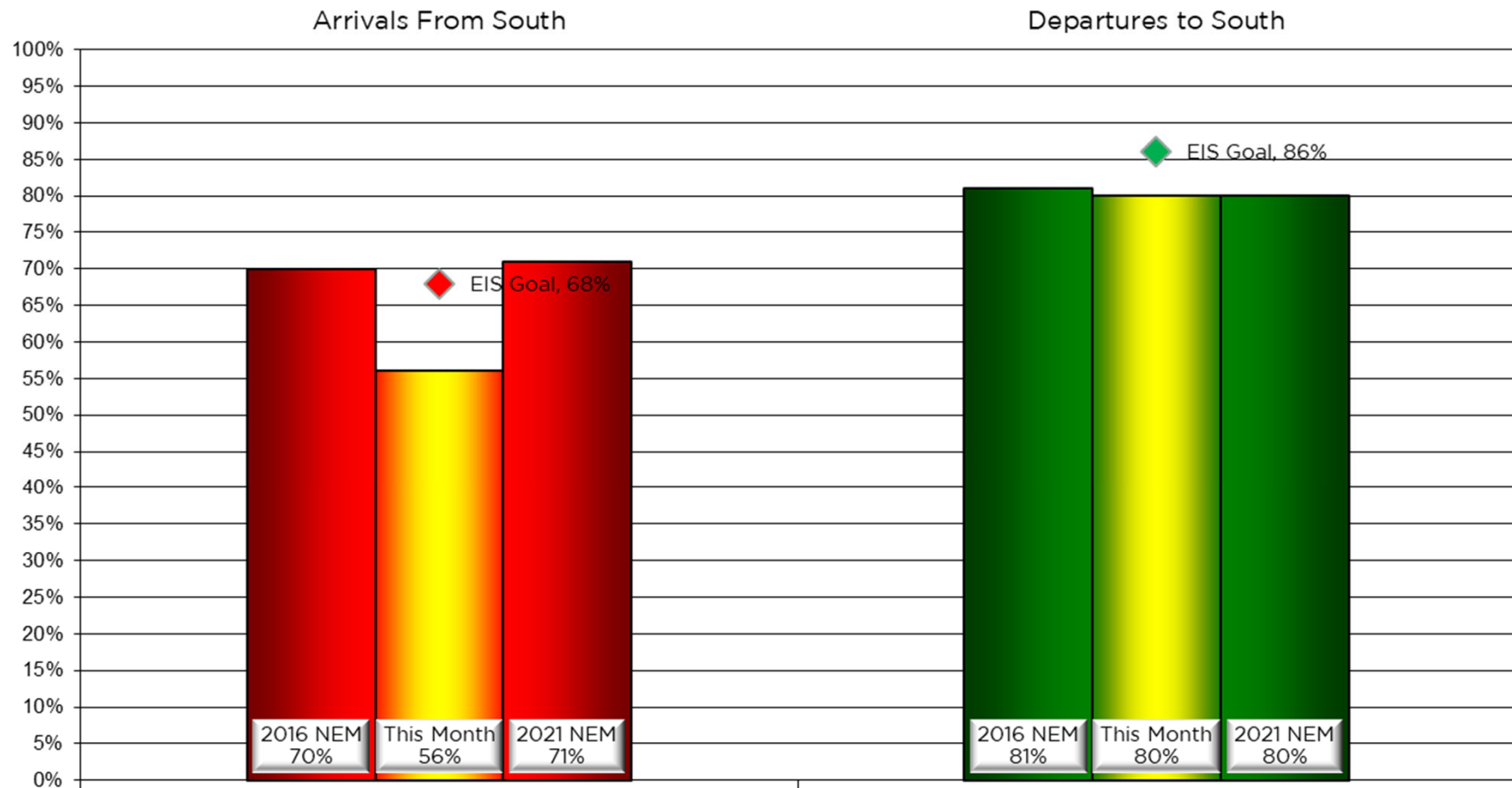
Preferred Flow

DATIS Reported Conditions Indicate  
Support for Non-Preferred Flow

DATIS Reported Conditions Do Not Indicate  
Support for Non-Preferred Flow



## Monthly Contraflow December 1-31, 2021



# Nightly Runway Use Summary – December 2021

(from 10:00 PM date list in first column to 7:00 AM the following morning)

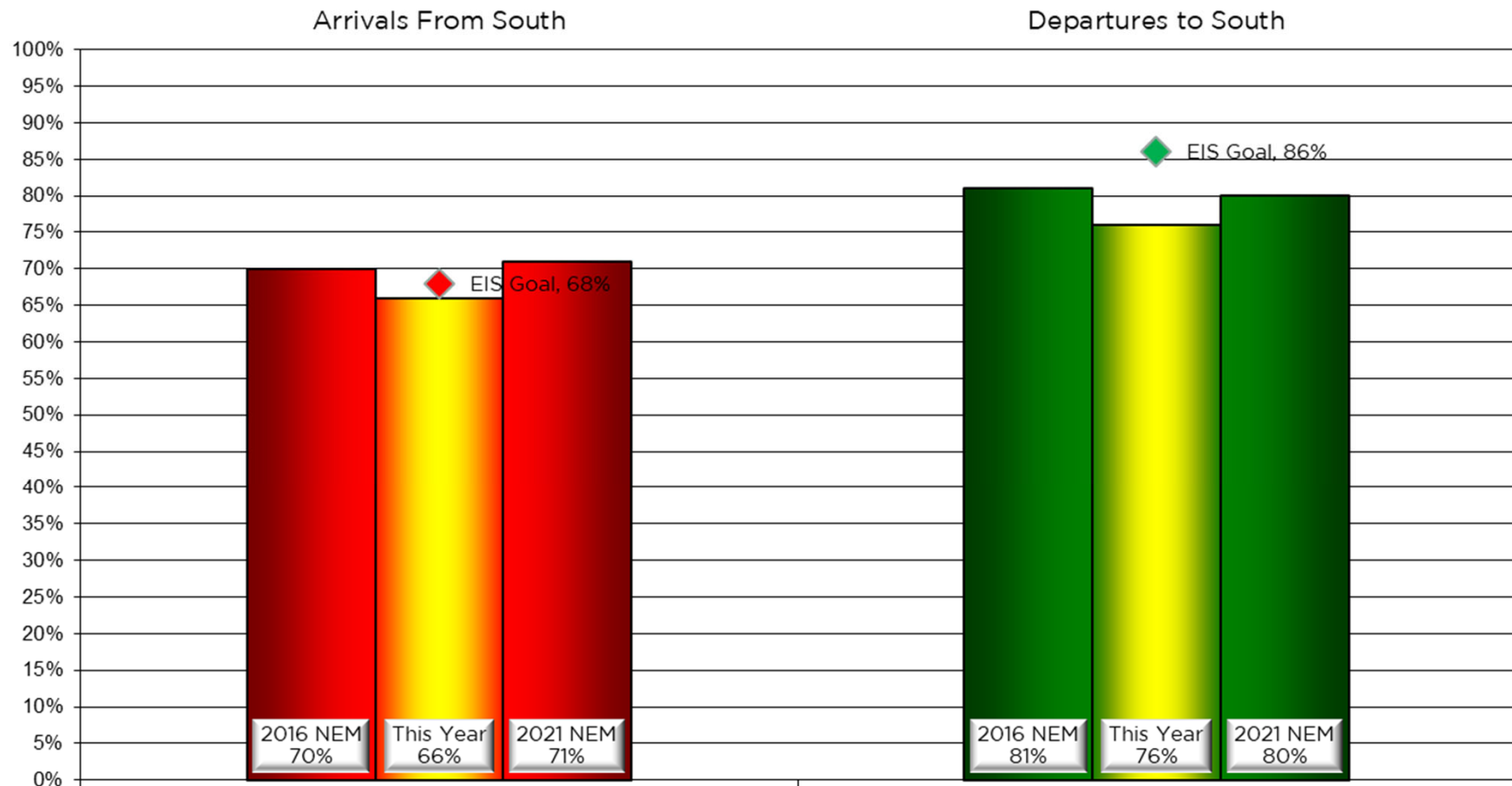
		% of all arrivals from the south										% of all departures to the south											
Date	Day	Unknown										Unknown											
		* in	Runway#							Runway	Notes /	** in	Runway#							Runway	Notes /		
		compliance	11	17L	17R	29	35L	35R	Use	Comments		compliance	11	17L	17R	29	35L	35R	Use	Comments			
12/01/21	Wed	0%			39	61				0	210-230@7-10kts	100%			39	61				0			
12/02/21	Thu	93%			2	5				55	38	0			32	52			12	4	0		
12/03/21	Fri	100%								66	34	0						61	39	0	330-360@4-8kts		
12/04/21	Sat																						
12/05/21	Sun																						
12/06/21	Mon	100%								62	38	0						66	34	0	300-360@4-9kts,g19		
12/07/21	Tue	96%			1	3				59	37	0			28	48			18	6	0		
12/08/21	Wed	96%			1	3				57	39	0			34	52			9	5	0		
12/09/21	Thu	0%			41	59						0	160-230@5-9kts	100%			38	62			0		
12/10/21	Fri	0%			42	58						0	170-230@13-20kts,g33,ra	100%			44	56			0		
12/11/21	Sat																						
12/12/21	Sun																						
12/13/21	Mon	92%			3	5				58	34	0		85%			35	50			12	3	0
12/14/21	Tue	0%			43	57						0	130-160@5-7kts	100%			42	58				0	
12/15/21	Wed	0%			46	54						0	180-200@13-16kts,g24	100%			40	60				0	
12/16/21	Thu	93%			4	3				52	41	0		81%			33	48			13	6	0
12/17/21	Fri	37%			25	38				23	14	0	060-150@3-6kts,ra	99%			52	47				1	0
12/18/21	Sat																						
12/19/21	Sun																						
12/20/21	Mon	91%			2	7				57	34	0		85%			30	55			10	5	0
12/21/21	Tue	100%								61	39	0		0%						63	37	0	300-310@6-11,g23
12/22/21	Wed	96%			1	3				57	39	0		87%			31	56			9	4	0
12/23/21	Thu	0%			45	55						0	190-210@8-13kts,g20	100%			40	60					0
12/24/21	Fri	0%			30	70						0	200@13-18kts,g31	100%			29	71					0
12/25/21	Sat																						
12/26/21	Sun																						
12/27/21	Mon	96%			1	3				59	37	0		80%			32	48			16	4	0
12/28/21	Tue	94%			1	5				58	36	0		89%			34	55			7	4	0
12/29/21	Wed	97%				3				59	38	0		89%			31	58			7	4	0
12/30/21	Thu	0%			42	58						0	090-170@3-5kts,	100%			43	57					0
12/31/21	Fri	0%			31	69						0	200-250@4-10kts,g20,ra,	100%			30	70					0

Preferred Flow

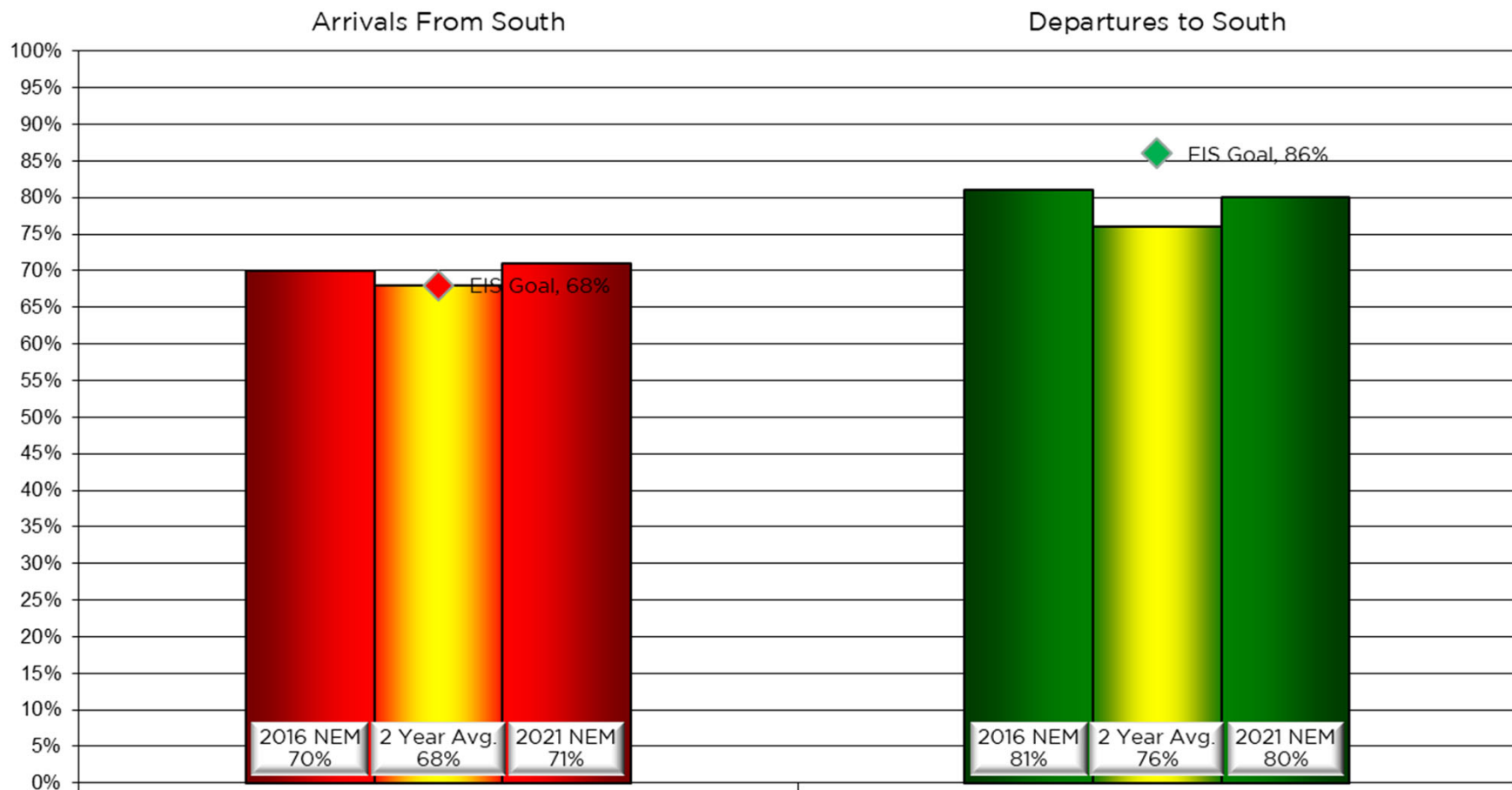
DATIS Reported Conditions Indicate  
Support for Non-Preferred Flow

DATIS Reported Conditions Do Not Indicate  
Support for Non-Preferred Flow

## Contraflow This Year As of December 31, 2021



## Contraflow 2 Year Average January 2020 - December 2021



# Year-to-Year by Month Percent\*

## Contraflow

Arrivals From the South (Goal 68%)										Departures to the South (Goal 86%)									
	2014	2015	2016	2017	2018	2019	2020	2021	Avg		2014	2015	2016	2017	2018	2019	2020	2021	Avg
Jan	51%	76%	69%	65%	60%	75%	56%	71%	65%	Jan	81%	76%	69%	61%	72%	69%	82%	71%	73%
Feb	72%	66%	80%	58%	67%	78%	78%	87%	73%	Feb	71%	76%	67%	77%	70%	57%	43%	45%	63%
Mar	60%	71%	63%	79%	84%	82%	65%	51%	69%	Mar	77%	66%	77%	62%	61%	89%	64%	77%	72%
Apr	67%	53%	86%	56%	73%	65%	71%	62%	67%	Apr	83%	77%	73%	80%	72%	82%	69%	75%	76%
May	60%	75%	62%	75%	43%	65%	71%	71%	65%	May	92%	80%	80%	80%	89%	90%	90%	63%	83%
Jun	75%	57%	79%	74%	74%	50%	69%	65%	68%	Jun	91%	91%	83%	93%	91%	91%	88%	84%	89%
Jul	79%	74%	59%	85%	90%	75%	72%	70%	76%	Jul	85%	80%	91%	85%	77%	87%	91%	76%	84%
Aug	61%	86%	76%	79%	72%	88%	82%	74%	77%	Aug	92%	91%	90%	90%	88%	89%	87%	88%	89%
Sep	85%	95%	88%	85%	80%	83%	83%	63%	83%	Sep	86%	73%	93%	31%	87%	77%	85%	90%	78%
Oct	75%	86%	81%	81%	77%	79%	71%	69%	77%	Oct	79%	74%	81%	82%	76%	78%	72%	76%	77%
Nov	78%	59%	74%	69%	76%	70%	51%	61%	68%	Nov	62%	88%	77%	75%	54%	72%	78%	81%	73%
Dec	78%	55%	75%	74%	72%	76%	67%	56%	69%	Dec	68%	79%	62%	74%	61%	72%	69%	80%	71%
Avg	70%	71%	74%	73%	72%	74%	70%	67%		Avg	81%	79%	79%	74%	75%	79%	77%	76%	

# NOISE COMMENT REPORT

## LOUISVILLE REGIONAL AIRPORT AUTHORITY



October 2021

# Comments (SDF/LOU)

## October 2021

Street	Zip Code	CNF Quad / 2021 DNL	Time Received	Time	Airport	Disturbance Type	Status	Operation or Comment Type <sup>1</sup>	Deviation Type <sup>2</sup>	Comments <sup>3</sup>
Phillips Ln	40165	SE (<60)	2021-10-05 22:42:00	2021-10-05 22:42:00	SDF	Aircraft Too Low	Investigated	Standard	None	<p>The center of the runway lines up with a point west of the KOA campground in Bullitt county. That is roughly 1.5 miles west of my house. Most of the flights seem to be coming in around 2400' but that is not consistent with the glideslope rules of thumb or the calculations I have been able to make. Rule of thumb is 3000' at 10 miles which means my house at 12 miles is closer to 3300' not 2400'.</p> <p>According to this app I was correct in our phone conversation when I said they were at least 1000' too low. I also read on one pilot forum where a pilot was giving advice to a new guy and he used the words It is acceptable to come in too low and just pick up the glide slope signal wherever you happen to run into it. Yes, he used the phrase "come in too low." It would explain why they are at 2400' at the 20+ mile mark and flying flat all the way across the county. Yes, they are cruising these altitudes not descending to them. I did send a complaint to the FAA. I am not the only one who has noticed a change in the last several years. My mother who lives in Hillview started complaining to me about the planes sounding like they were going to land on her roof sometime in 2019 as did her neighbor. Something is definitely different. This happens both when the UPS crowd is coming in and when there is only one plane in the sky. I have not heard back from the FAA yet, but I hope they can point me to something that can help. There have been several times when watching this app that I have seen these jet aircraft cruising at lower altitudes than the single engine prop planes they are passing.</p>

1. **Standard:** Indicates the "Most Preferred" runway configuration was being utilized at the time of the comment.  
**Non-Standard:** Indicates that a "Lesser Preferred" runway configuration was being utilized at the time of the comment.  
**QHP:** QuieterHome Program
2. This column is used to indicate the conditions which most likely necessitated a deviation from the standard procedures.
3. Comments may be edited for space, format, or unrelated content.

# Comments (SDF/LOU)

## October 2021

Street	Zip Code	CNF Quad / 2021 DNL	Time Received	Time	Airport	Disturbance Type	Status	Operation or Comment Type <sup>1</sup>	Deviation Type <sup>2</sup>	Comments <sup>3</sup>
York River RD	40214	SW (<60)	2021-10-07 09:05:00	2021-10-06 17:58:00	SDF	Too Much Noise	Investigated	Non-Standard	Weather	For the last 2 hours planes have flown over my house knocking pics off the wall - it is 10- 6-2021 at 5:00 p.m. - I live on York River road. I have lived here for over 30 years. Today is the last straw. For the last 6-10 months the noise is well beyond the threshold. Especially in the a.m. starting at 4:30. This is an official complaint on my part and will follow up with other neighbors also. Don't tell me it's the weather again!
Goff Ln	40118	SW (<60)	2021-10-07 17:44:00	2021-10-07 02:00:00	SDF	Aircraft Too Low	Investigated	Standard	None	The UPS planes fly directly over my house. If they would move over about a quarter mile or so to a place where there are not a bunch of houses. There is a tower directly across from me that I believe is 400' and there is no way they are flying 1200'. Between 2:00 a.m. and 4:00 a.m. they make a turn and fly directly over my house.
Bland St	40217	NE (60-65)	2021-10-07 11:18:00	2021-10-07 11:18:00	SDF	Too Much Noise	Investigated	Non-Standard	Weather	I served 6.5 years in the U.S. Navy only to come back to my house which my family has lived in for 66 years to find out that we have been denied the opportunity to enjoy my castle. How would you like to have your house rattle all day and the wee hours of the morning due to noise from the planes? First, in 1957 the City of Louisville polluted the Meriwether Area with the incinerator. Then they put Metro Housing in this area which to this day property owners here suffer due to non-management. The low flying planes continue to pollute with noise and fuel sprayed on my property. I have to pay for cable to watch T.V. due to constant interference from the planes. When the smokestacks were removed, here comes the air and noise pollution from the planes.

1. **Standard:** Indicates the "Most Preferred" runway configuration was being utilized at the time of the comment.  
**Non-Standard:** Indicates that a "Lesser Preferred" runway configuration was being utilized at the time of the comment.  
**QHP:** QuieterHome Program
2. This column is used to indicate the conditions which most likely necessitated a deviation from the standard procedures.
3. Comments may be edited for space, format, or unrelated content.



# Comments (SDF/LOU)

## October 2021

Street	Zip Code	CNF Quad / 2021 DNL	Time Received	Time	Airport	Disturbance Type	Status	Operation or Comment Type <sup>1</sup>	Deviation Type <sup>2</sup>	Comments <sup>3</sup>
Stringer Ln	40047	SE (<60)	2021-10-13 11:26:00	2021-10-12 11:47:00	SDF	Other	Investigated	Standard	None	<p>Over the past 1 1/2 years there has been an increase in cargo air traffic over and around our residence. We have lived here for 8 years. The first 6 years, we have only had to clean off gutters, and soffits every 3 years, and only on the first floor. We have a second story, and up until the last year have never had an issue with the 2nd story gutters, soffits, and eaves needing to be cleaned. Not so this year.</p> <p>The north and west side is especially filthy. We just finished cleaning the exterior trims on the first floor and noticed just how bad the upper floor and upper trim on the roofs are. We will have to either hire someone to clean these areas or find another solution (power washing ourselves). Sometimes, especially at night these cargo planes are flying very low and can be heard flying overhead. Hopefully, something can be done about the situation.</p>

1. **Standard:** Indicates the “Most Preferred” runway configuration was being utilized at the time of the comment.  
**Non-Standard:** Indicates that a “Lesser Preferred” runway configuration was being utilized at the time of the comment.  
**QHP:** QuieterHome Program
2. This column is used to indicate the conditions which most likely necessitated a deviation from the standard procedures.
3. Comments may be edited for space, format, or unrelated content.

# Comments (SDF/LOU)

## October 2021

Street	Zip Code	CNF Quad / 2021 DNL	Time Received	Time	Airport	Disturbance Type	Status	Operation or Comment Type <sup>1</sup>	Deviation Type <sup>2</sup>	Comments <sup>3</sup>
Phillips Ln	40165	SE (<60)	2021-10-13 08:32:00	2021-10-13 08:32:00	SDF	Constant Noise	Investigated	Standard	None	I almost got 5 hours of restless sleep last night because of aircraft noise in my neighborhood. I have complained multiple times to you, and nothing has changed. Do you have the name and address of someone who can help me with these concerns? This is affecting my health and I need to get help with it. I also noticed there was a story on the news the other night where the incidents of people pointing lasers at aircraft are on the rise. I do not do stupid things like that because it is a stupid thing to do and because I know it can get me arrested. Not everyone knows it is illegal. Even though some of it can be attributed to ignorance or drunken stupidity, I believe it can be taken as an indicator that I am not the only one in the world that thinks the airplanes are flying too low and disturbing the peace. The traffic pattern at SDF has indeed gotten bigger and lower to the ground and I am not the only one who noticed that either. All I am asking is that the traffic pattern be raised to an elevation that it stops disturbing the peace. That can't possibly be that hard to do. Like I told you before I got it done with one phone call 20+ years ago. Again, if you can't help will you please help me find someone who can. Going to a community meeting and listening to excuses will not help. I don't need excuses for why the noise exists I need it to stop so I can sleep.

1. **Standard:** Indicates the "Most Preferred" runway configuration was being utilized at the time of the comment.  
**Non-Standard:** Indicates that a "Lesser Preferred" runway configuration was being utilized at the time of the comment.  
**QHP:** QuieterHome Program
2. This column is used to indicate the conditions which most likely necessitated a deviation from the standard procedures.
3. Comments may be edited for space, format, or unrelated content.

# Comments (SDF/LOU)

## October 2021

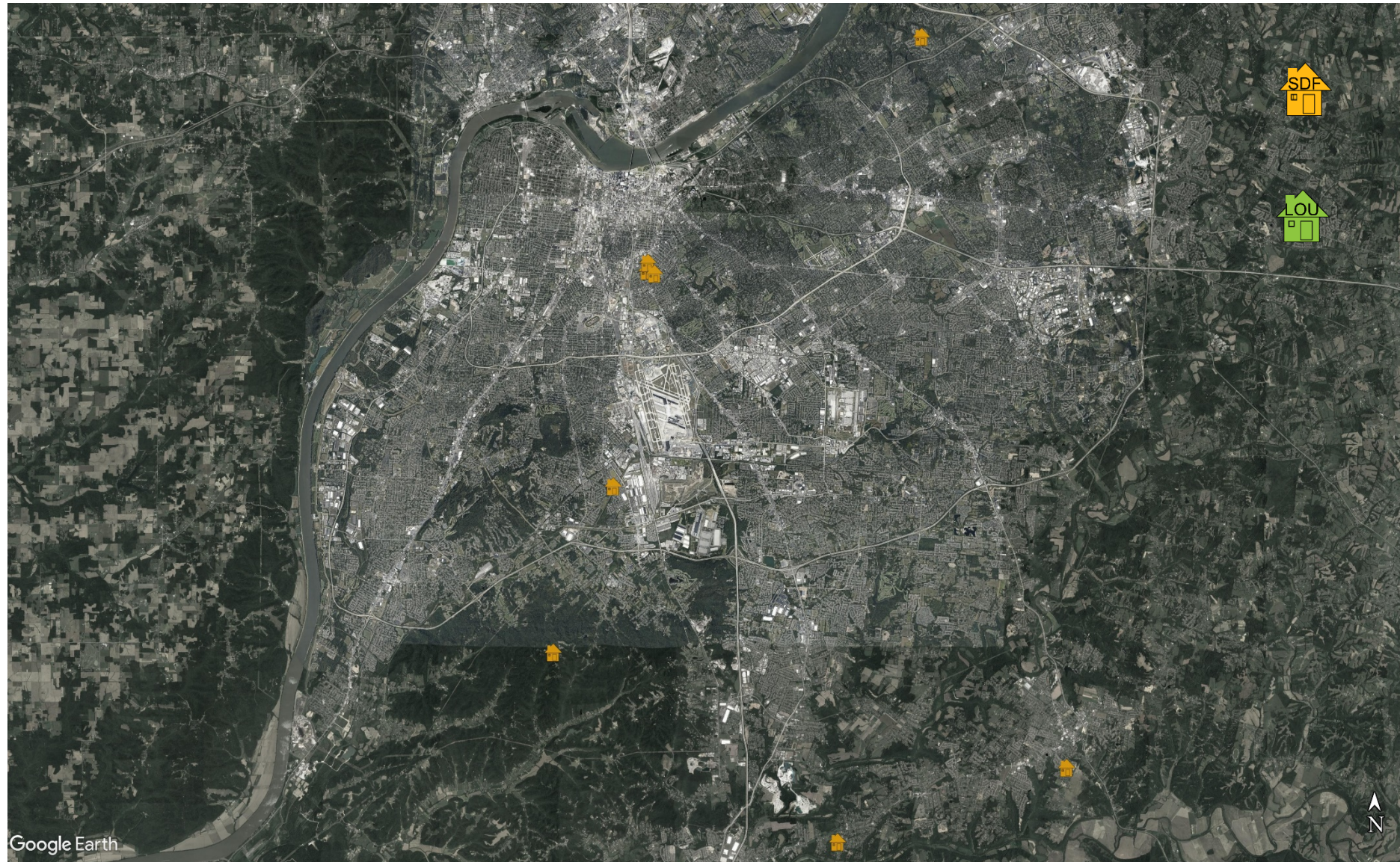
Street	Zip Code	CNF Quad / 2021 DNL	Time Received	Time	Airport	Disturbance Type	Status	Operation or Comment Type <sup>1</sup>	Deviation Type <sup>2</sup>	Comments <sup>3</sup>
Ivy Crest Cir	40241	NE (<60)	2021-10-16 10:13:00	2021-10-16 03:00:00	SDF	Noise At Wrong Time	Investigated	Non-Standard	Weather	I live in southeast Jefferson County. Occasionally I hear the UPS planes. This morning I was awoken by 3 or 4 big planes. I don't know if they were landing or taking off. It has been pretty peaceful and pretty quiet and that is why I enjoy being in this part of town. I would kind of like to have cooperation that would not let the planes fly over interrupting my sleep. I know that this is falling on deaf ears and there is not much that can be done but it helps me get it off my chest.
Ziegler St	40217	NE (60-65)	2021-10-25 15:20:00	2021-10-25 15:20:00	SDF	Other	Investigated	Non-Standard	Weather	I was not able to attend your meeting last week and would like to know why my home is not eligible for the sound insulation program.
Forrest St	40217	NE (60-65)	2021-10-26 04:47:00	2021-10-26 04:00:00	SDF	Noise At Wrong Time	Investigated	Non-Standard	Weather	The planes have been going over my house since about 4:00 a.m. There is one going over right now. They woke me up and I cannot sleep.
							Received	LRAA	9	

1. **Standard:** Indicates the “Most Preferred” runway configuration was being utilized at the time of the comment.  
**Non-Standard:** Indicates that a “Lesser Preferred” runway configuration was being utilized at the time of the comment.  
**QHP:** QuieterHome Program
2. This column is used to indicate the conditions which most likely necessitated a deviation from the standard procedures.
3. Comments may be edited for space, format, or unrelated content.

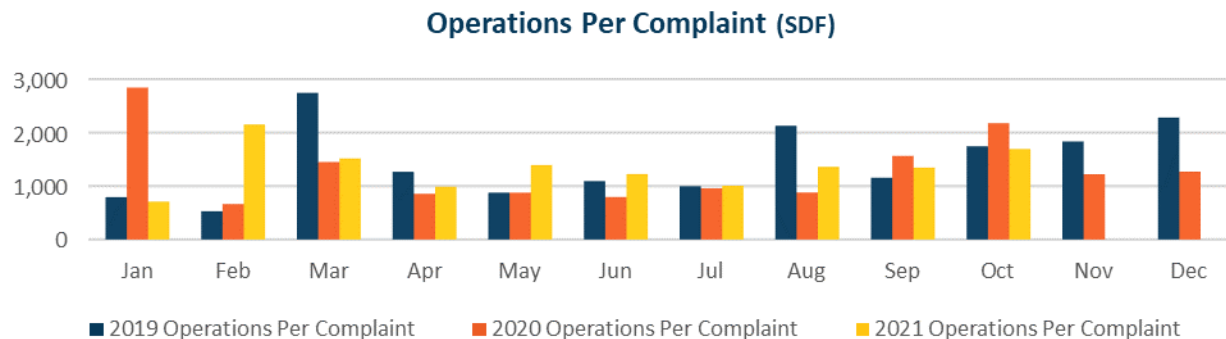
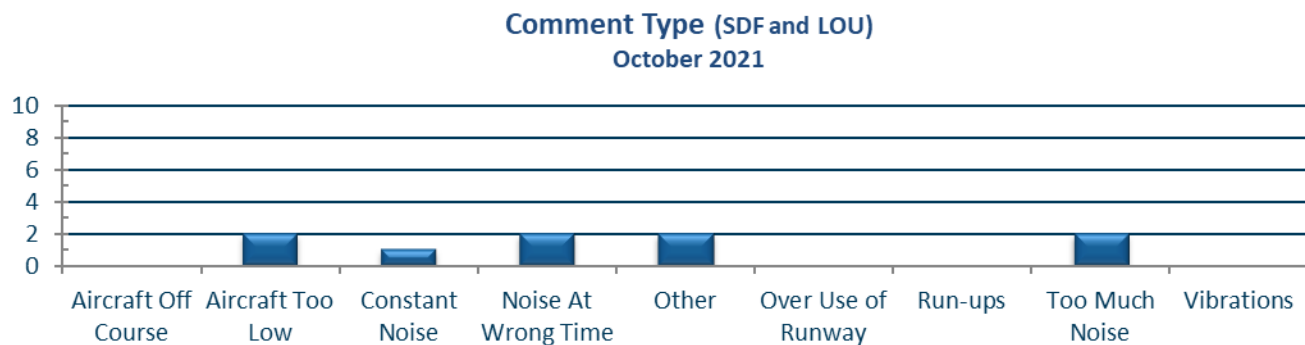
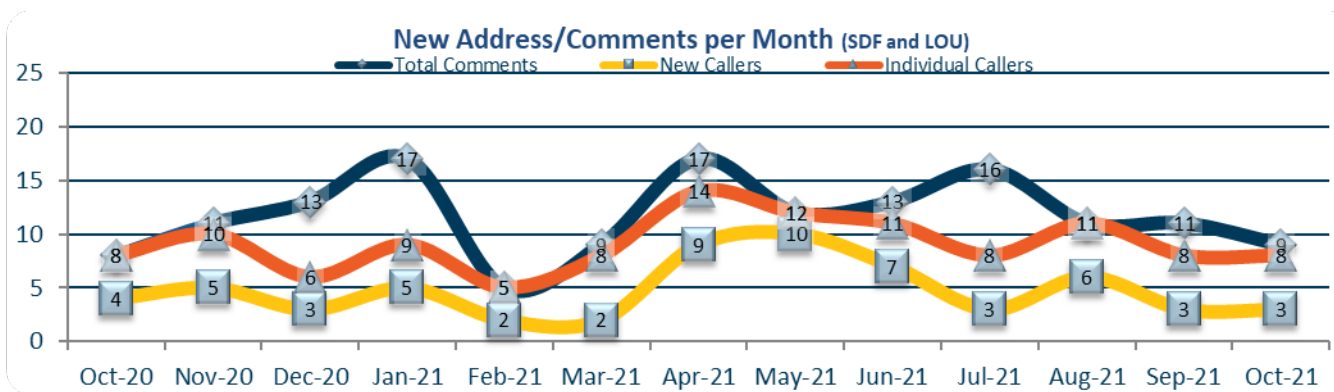


# Comment Location (SDF/LOU)

October 2021







# NOISE COMMENT REPORT

## LOUISVILLE REGIONAL AIRPORT AUTHORITY



November 2021

# Comments (SDF/LOU)

## November 2021

Street	Zip Code	CNF Quad / 2021 DNL	Time Received	Time	Airport	Disturbance Type	Status	Operation or Comment Type <sup>1</sup>	Deviation Type <sup>2</sup>	Comments <sup>3</sup>
Robin Rd	40213	NE (60-65)	2021-11-04 16:35:00	2021-11-03 14:00:00	SDF	Over Use of Runway	Investigated	Non-Standard	None	I noticed yesterday that SDF flow was still northbound as of 3:45 p.m. even though METAR info showed winds were calm. Any idea why they switched so late? Also, I noticed the same conditions as of 6:00 p.m. on last Friday.
Emil Ave	40217	NE (<60)	2021-11-05 00:59:00	2021-11-04 12:02:00	SDF	Other	Investigated	Standard	None	I was calling regarding the change in the airplane routes. They now come right over our heads in Parkway Village and right off of Eastern Parkway.
Pindell Ave	40217	NE (60-65)	2021-11-05 10:57:00	2021-11-04 20:24:00	SDF	Aircraft Off Course	Investigated	Non-Standard	None	I have noticed more air traffic in my area and even over my house. Smaller planes have been flying over my house in the last few months.
Robin Rd	40213	NE (60-65)	2021-11-08 09:46:00	2021-11-06 14:00:00	SDF	Over Use of Runway	Investigated	Non-Standard	None	On Saturday, November 6 the airfield did not switch back to southflow until 6:00 p.m.
Shannon Dr	40220	NE (NA)	2021-11-08 16:00:00	2021-11-08 16:00:00	LOU	Aircraft Too Low	Investigated	Standard	None	The planes are flying all day long right over my house. This completely eliminates sitting on my back deck. It has been going on for almost 2 years. It happens all the time but there are some breaks every once in a while. I called you before and you had one of your assistants call me back. You need to get back to your PR job and get those planes higher.
Belgravia Ct	40208	NW (60-65)	2021-11-16 11:34:00	2021-11-15 22:15:00	SDF	Too Much Noise	Investigated	Non-Standard	None	We just moved into Old Louisville and last night there was an unbelievable amount of aircraft noise. There were planes going over every minute. There are also planes going over right now. Is this normal? What can be done about this?

1. **Standard:** Indicates the “Most Preferred” runway configuration was being utilized at the time of the comment.  
**Non-Standard:** Indicates that a “Lesser Preferred” runway configuration was being utilized at the time of the comment.  
**QHP:** QuieterHome Program
2. This column is used to indicate the conditions which most likely necessitated a deviation from the standard procedures.
3. Comments may be edited for space, format, or unrelated content.

# Comments (SDF/LOU)

## November 2021

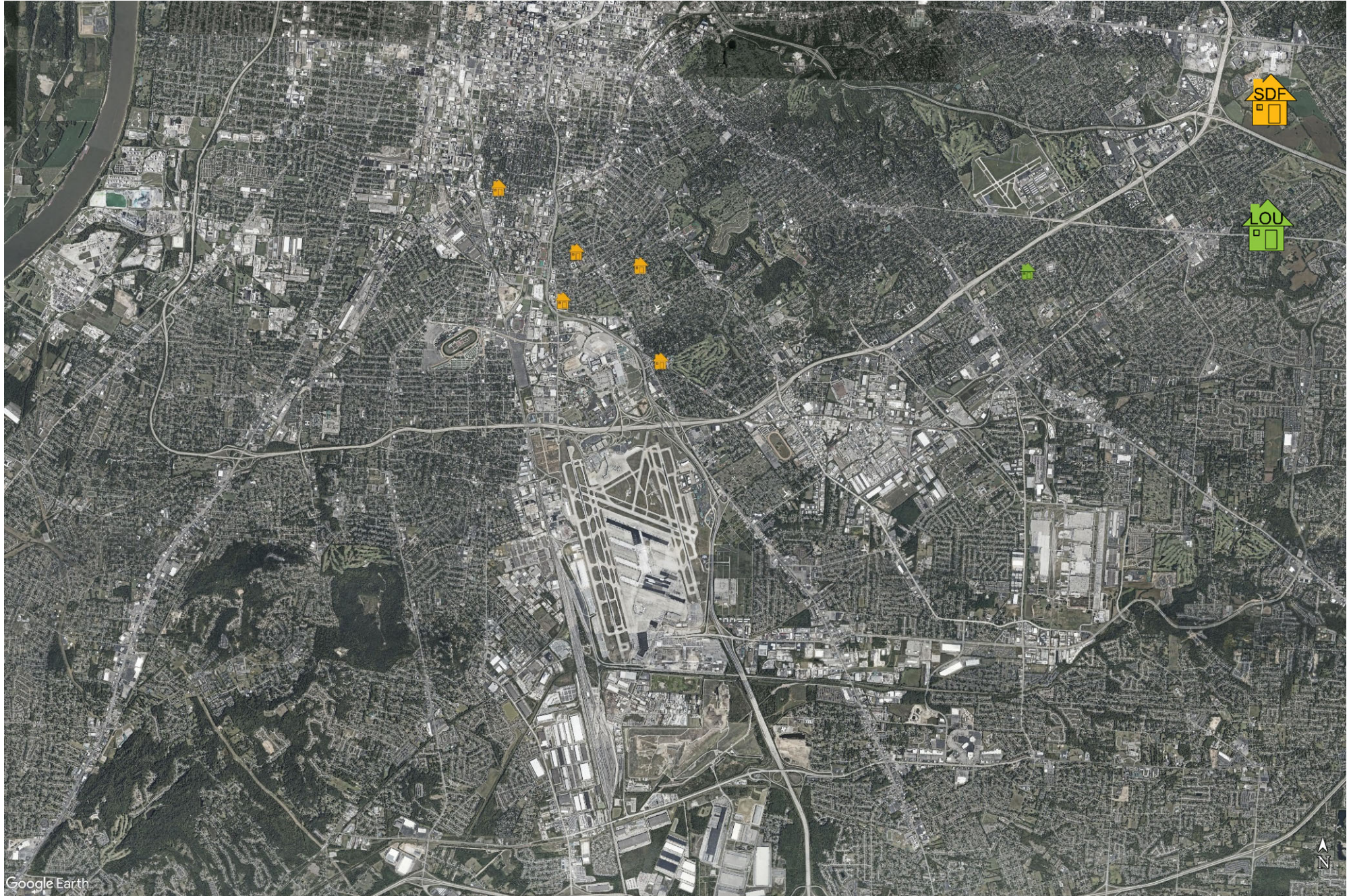
Street	Zip Code	CNF Quad / 2021 DNL	Time Received	Time	Airport	Disturbance Type	Status	Operation or Comment Type <sup>1</sup>	Deviation Type <sup>2</sup>	Comments <sup>3</sup>
Lynn St	40217	NE (60-65)	2021-11-23 13:05:00	2021-11-23 13:05:00	SDF	Too Much Noise	Investigated	Standard	None	I called 311 and they gave me your number. I would like to complain about all the noise from the airplanes. They come over this area all the time. I have heard that the airport has a program to replace windows and doors. How do I go about applying for that program?
							Received	LRAA	7	

1. **Standard:** Indicates the “Most Preferred” runway configuration was being utilized at the time of the comment.  
**Non-Standard:** Indicates that a “Lesser Preferred” runway configuration was being utilized at the time of the comment.  
**QHP:** QuieterHome Program
2. This column is used to indicate the conditions which most likely necessitated a deviation from the standard procedures.
3. Comments may be edited for space, format, or unrelated content.

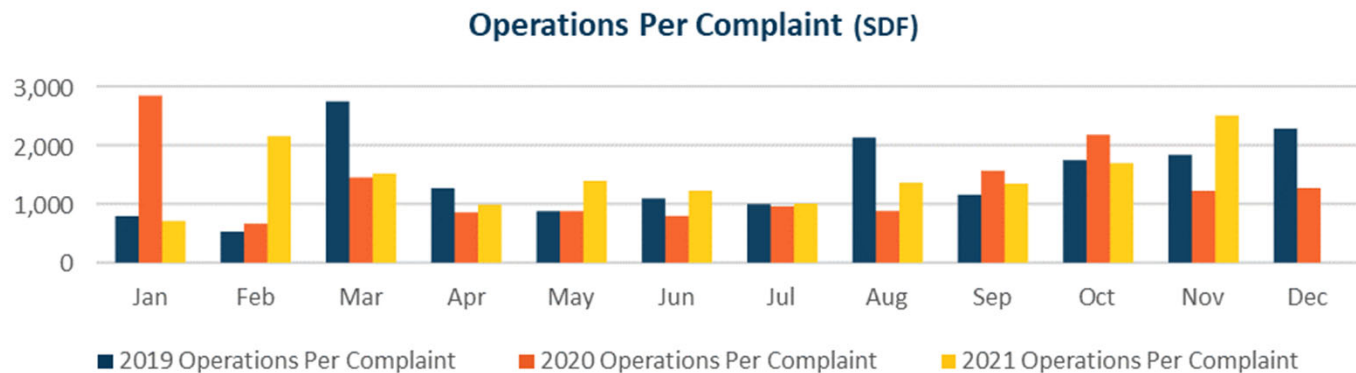
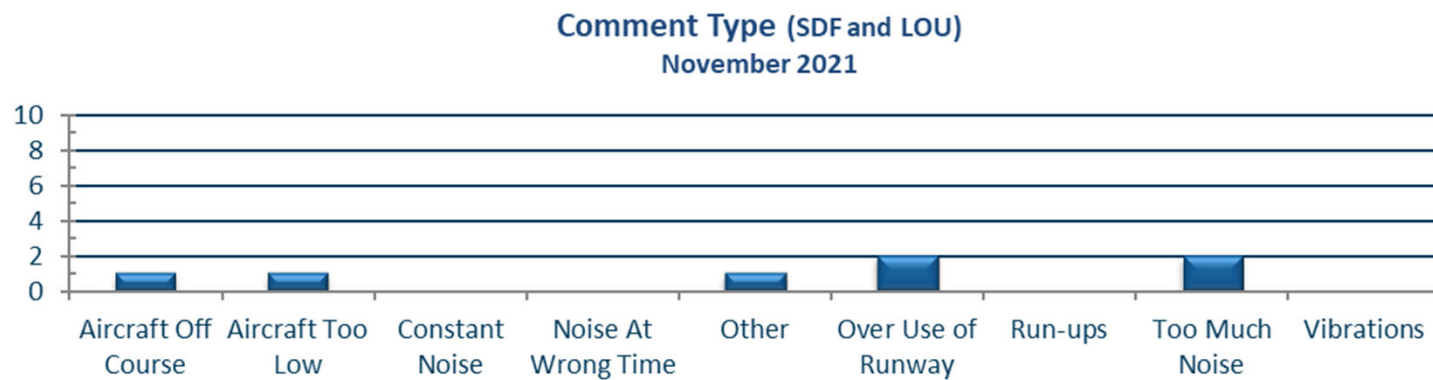
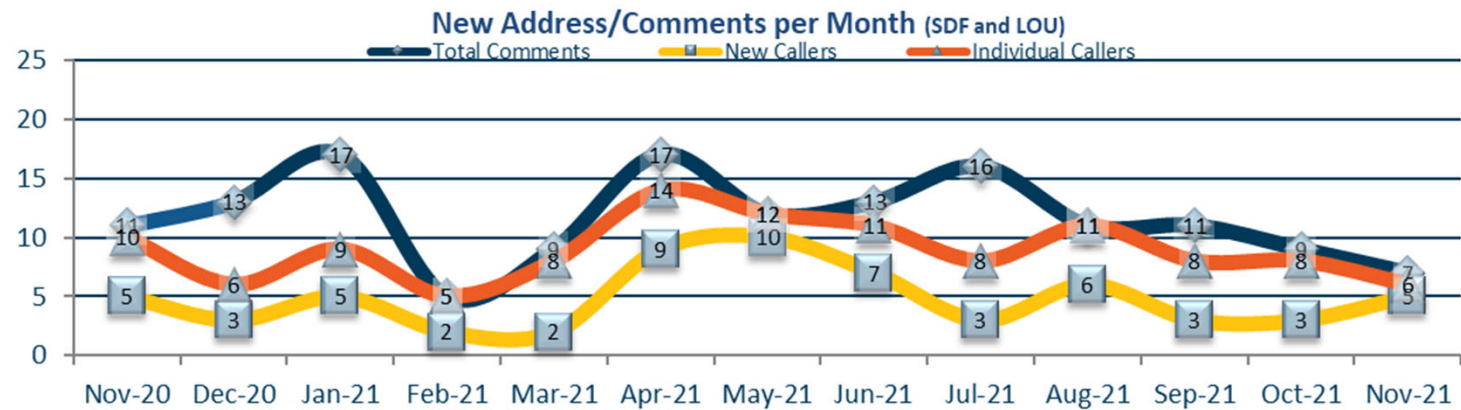


# Comment Location (SDF/LOU)

November 2021







# NOISE COMMENT REPORT

## LOUISVILLE REGIONAL AIRPORT AUTHORITY



December 2021

# Comments (SDF/LOU)

## December 2021

Street	Zip Code	CNF Quad / 2021 DNL	Time Received	Time	Airport	Disturbance Type	Status	Operation or Comment Type <sup>1</sup>	Deviation Type <sup>2</sup>	Comments <sup>3</sup>
Calvin Ave	40206	NE (<60)	2021-12-03 11:40:00	2021-12-03 04:00:00	SDF	Too Much Noise	Investigated	Standard	None	I live in the Crescent Hill neighborhood and over the last few weeks between 4:00 a.m. and 6:00 a.m. there's been endless numbers of loud planes going over my home. What is going on? No one in my house has been able to sleep through the night. This is horrible.
Lincoln Ave	40208	NW (<60)	2021-12-07 02:34:00	2021-12-07 02:00:00	SDF	Too Much Noise	Investigated	Non-Standard	Weather	It is another sleepless night because I guess you all just don't give a sh**. How many nights am I going to have to go through this? I can't sleep because you all just fly plane after plane after plane, after plane over. It is absurd, you are going to hear from my attorney. I have put up with this for long enough.
Lincoln Ave	40208	NW (<60)	2021-12-07 03:29:00	2021-12-07 03:29:00	SDF	Noise At Wrong Time	Investigated	Non-Standard	Weather	You do a great F***ing Job A**hole! I am calling a lawyer and see if there is anything I can do to stop this. I have been dealing with this the past 25+ years and now it has got to change. I have to be at the doctor in 4 hours and have not slept at all. Thanks again.
Calvin Ave	40206	NE (<60)	2021-12-08 13:26:00	2021-12-08 04:30:00	SDF	Too Much Noise	Investigated	Standard	Weather	From 4:30 a.m. to 6:30 a.m. there were many, many loud planes going over my home on Calvin Avenue. This is extremely stressful to listen to and very disruptive of the sleep of everyone in my household. Can you tell me if this is unusual? It is very upsetting to be so far from the airport and yet get this level of extremely loud, low flying planes every night at such an early hour.

1. **Standard:** Indicates the "Most Preferred" runway configuration was being utilized at the time of the comment.  
**Non-Standard:** Indicates that a "Lesser Preferred" runway configuration was being utilized at the time of the comment.  
**QHP:** QuieterHome Program
2. This column is used to indicate the conditions which most likely necessitated a deviation from the standard procedures.
3. Comments may be edited for space, format, or unrelated content.

# Comments (SDF/LOU)

## December 2021

Street	Zip Code	CNF Quad / 2021 DNL	Time Received	Time	Airport	Disturbance Type	Status	Operation or Comment Type <sup>1</sup>	Deviation Type <sup>2</sup>	Comments <sup>3</sup>
Myrtle St	40208	NW (60-65)	2021-12-09 10:54:00	2021-12-09 10:54:00	SDF	Other	Investigated	Standard	None	I'm Producing Artistic Director of Kentucky Shakespeare, we are a not-for-profit presenting the free community festival, Kentucky Shakespeare Festival in Central Park each summer and we are the longest-running free Shakespeare Festival in the U.S. 2022 will mark our 62nd season. We are just a few miles from the airport and have a substantial amount of airplanes fly over during our performances and hold for the planes. This past summer it seemed to be much more than normal (sometimes we had up to 15 planes fly directly over during a show and had to hold.) I thought it was worth a try to at least reach out. Dr. Larry Gettelman, one of our former board members and Old Louisville resident said that in the past days of Shakespeare in Central Park we were able to speak with someone at the airport and for those weeks during the summer during the showtimes of 8:00 p.m.-10:30 p.m., if they had an option of the multiple runways, the airport could have them not come in on the one directly over Central Park.
Calvin Ave	40206	NE (<60)	2021-12-16 08:05:00	2021-12-16 01:00:00	SDF	Too Much Noise	Investigated	Non-Standard	Weather	Planes started departing to the east at 1 a.m., flying low over my house. Despite wearing commercial grade earplugs, using a white noise machine, having pillows around my head, and all of my windows tightly closed it was impossible to sleep. Typically, it's been 4:00 a.m. to 6:00 a.m. as you indicated to me was normal, but last night they started at 1:00 a.m. and continued on for several hours. They were probably at least 70 or 80 low flying, extremely loud planes that went over to my house before I finally fell asleep again. Can you tell me what conditions caused this unusual situation?

1. **Standard:** Indicates the "Most Preferred" runway configuration was being utilized at the time of the comment.  
**Non-Standard:** Indicates that a "Lesser Preferred" runway configuration was being utilized at the time of the comment.  
**QHP:** QuieterHome Program
2. This column is used to indicate the conditions which most likely necessitated a deviation from the standard procedures.
3. Comments may be edited for space, format, or unrelated content.

# Comments (SDF/LOU)

## December 2021

Street	Zip Code	CNF Quad / 2021 DNL	Time Received	Time	Airport	Disturbance Type	Status	Operation or Comment Type <sup>1</sup>	Deviation Type <sup>2</sup>	Comments <sup>3</sup>
Top Hill RD	40118	SW (<60)	2021-12-16 04:39:00	2021-12-16 04:39:00	SDF	Aircraft Off Course	Investigated	Standard	None	I have called before. You keep flying planes. I thought it was because of the low cloud cover, that is not it. They sound like they are coming in my house. I live in the Forest on Top Hill Road. You send them through at 4 o'clock in the afternoon and 4 o'clock in the morning. I cannot sleep and I do not appreciate it. You need to send them on another route. You did not buy this property so you should not be flying over this property. Change it. They are coming from southeasterly, and they are going northwesterly. So, you are going to have to figure out another route.
S 4th St	40208	NW (60-65)	2021-12-28 10:25:00	2021-12-28 10:25:00	SDF	Too Much Noise	Investigated	Non-Standard	Weather	I am a resident in Old Louisville. I was curious about whether the increase in plane noise this month was the result of a temporary change in flight paths or if this is a permanent issue? It seems every few minutes there is an extremely loud airplane noise coming through.

1. **Standard:** Indicates the “Most Preferred” runway configuration was being utilized at the time of the comment.  
**Non-Standard:** Indicates that a “Lesser Preferred” runway configuration was being utilized at the time of the comment.  
**QHP:** QuieterHome Program
2. This column is used to indicate the conditions which most likely necessitated a deviation from the standard procedures.
3. Comments may be edited for space, format, or unrelated content.

# Comments (SDF/LOU)

## December 2021

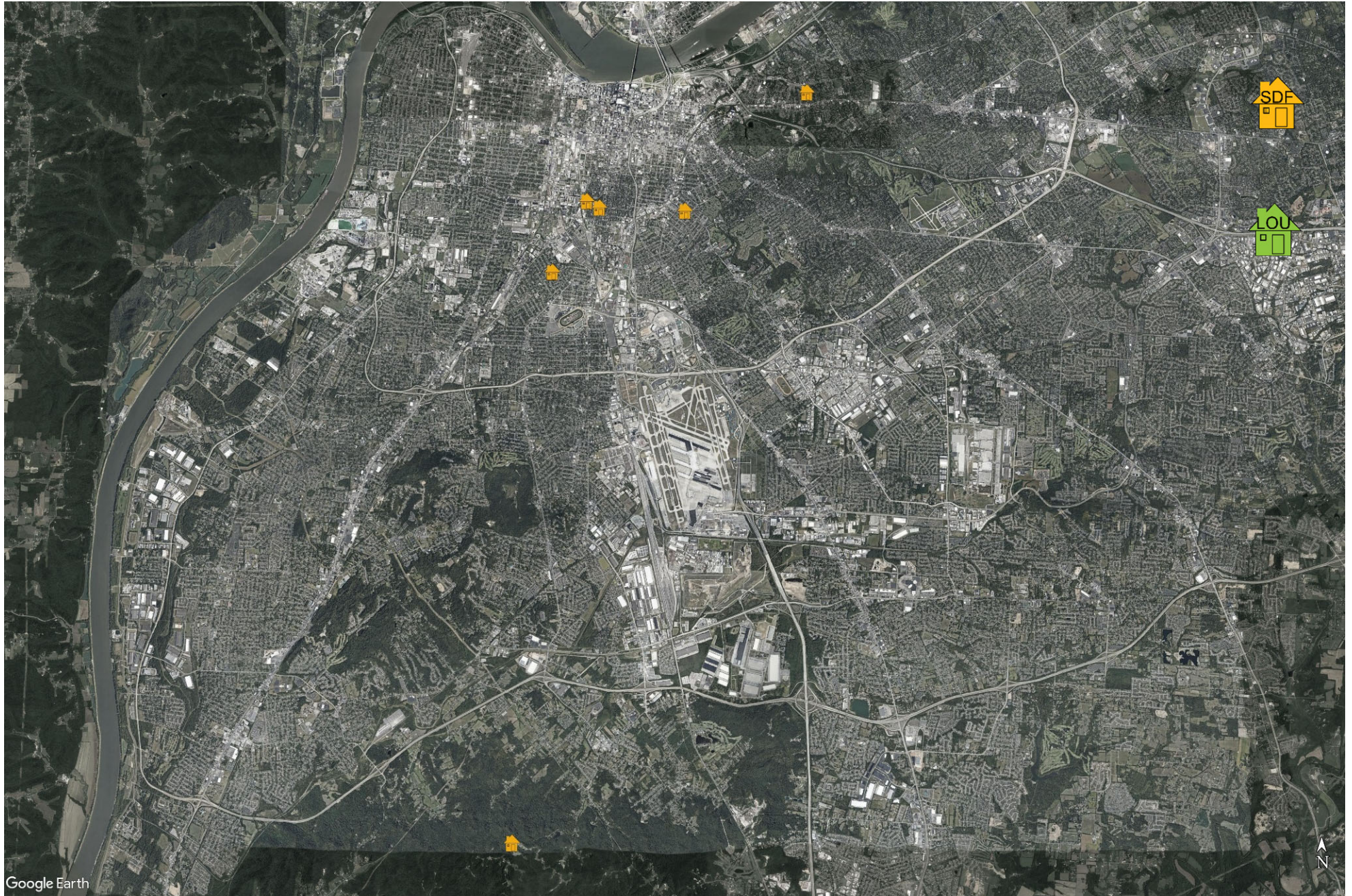
Street	Zip Code	CNF Quad / 2021 DNL	Time Received	Time	Airport	Disturbance Type	Status	Operation or Comment Type <sup>1</sup>	Deviation Type <sup>2</sup>	Comments <sup>3</sup>
Goss Ave	40217	NE (<60)	2021-12-30 02:04:00	2021-12-30 00:30:00	SDF	Noise At Wrong Time	Investigated	Standard	None	We have a 5-month-old baby. Every day we hear plane after plane like they are about to land right on top of our house. More planes seem to come through during the night. Not sure if it is SDF or UPS. Either way it is beginning to interrupt our baby's sleep. on December 30, 2021 it sounded like 16 planes came through between 12:30 a.m. and 1:40 a.m. We saw there is an open table meeting on the 4th Monday every month due to noise issues in the Merriwether neighborhood. Since that's only 3 minutes away from our home we are wondering if anything is being done for Goss Ave as well. A friend of ours went through this a few years ago for his neighborhood and they got sound proof windows. Has that been put on the table yet?
							Received	LRAA	9	

1. **Standard:** Indicates the “Most Preferred” runway configuration was being utilized at the time of the comment.  
**Non-Standard:** Indicates that a “Lesser Preferred” runway configuration was being utilized at the time of the comment.  
**QHP:** QuieterHome Program
2. This column is used to indicate the conditions which most likely necessitated a deviation from the standard procedures.
3. Comments may be edited for space, format, or unrelated content.

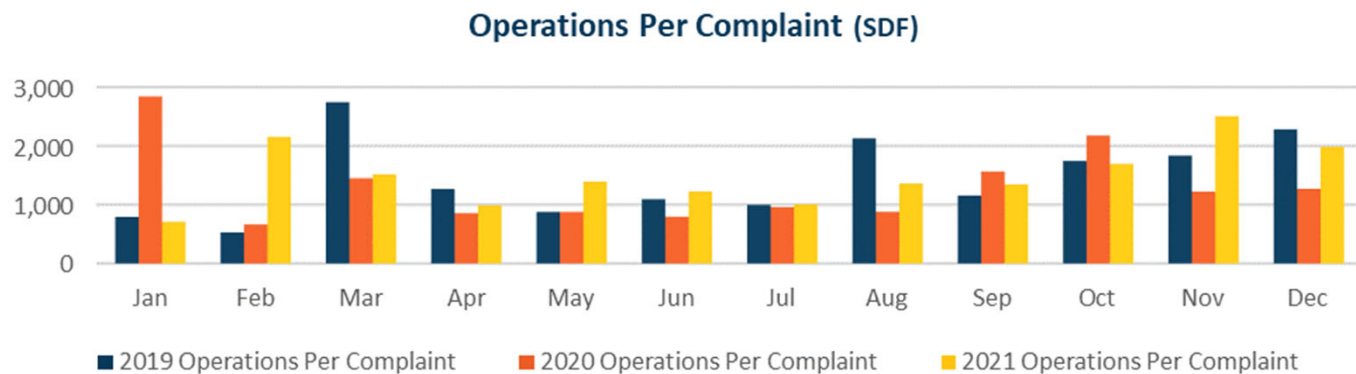
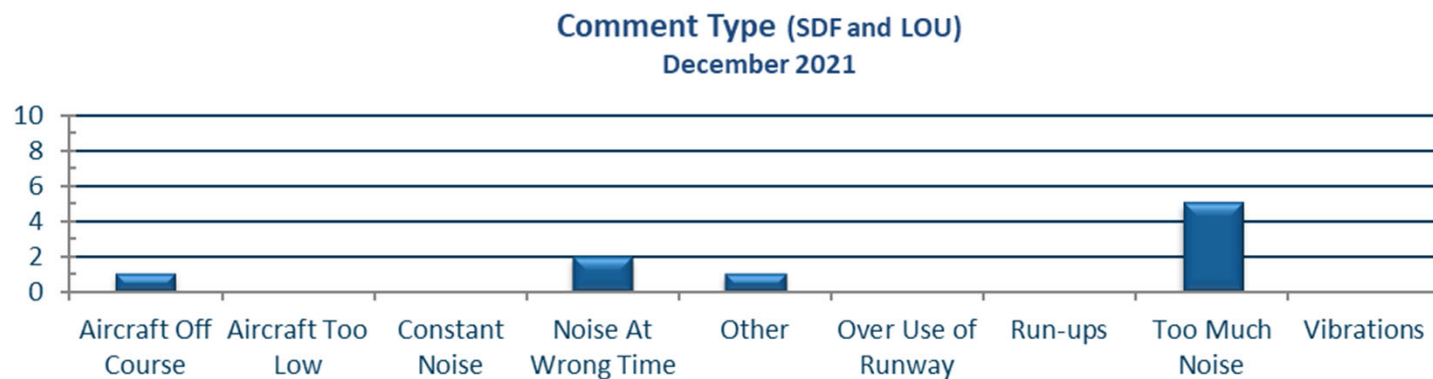
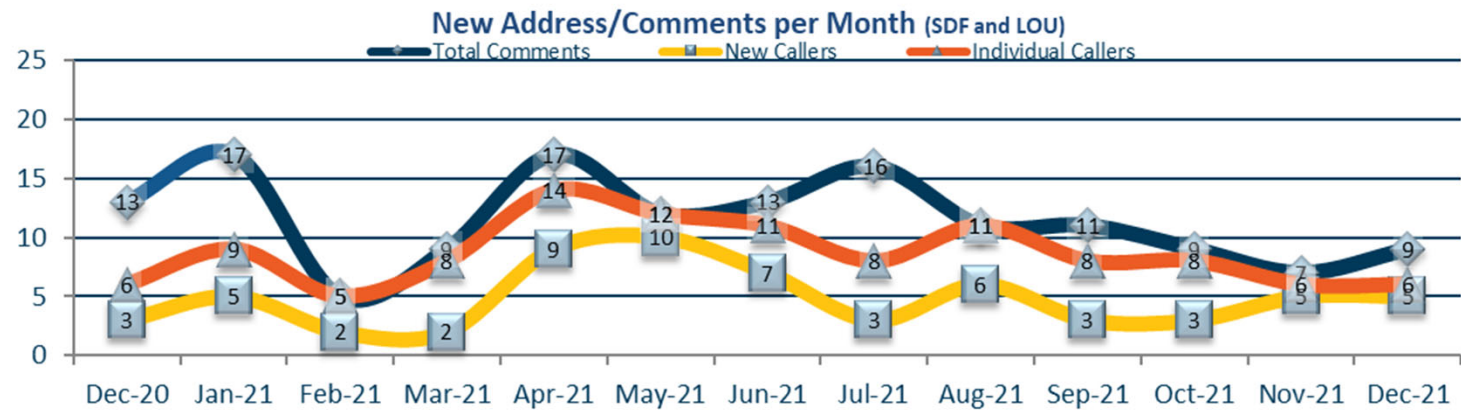


# Comment Location (SDF/LOU)

December 2021







# Daily Runway Use Uncorrected (SDF) October 2021

Flow	Time	Fri 10/1	Sat 10/2	Sun 10/3	Mon 10/4	Tue 10/5	Wed 10/6	Thu 10/7	Fri 10/8	Sat 10/9	Sun 10/10	Mon 10/11	Tue 10/12	Wed 10/13	Thu 10/14	Fri 10/15	Sat 10/16	Sun 10/17	Mon 10/18	Tue 10/19	Wed 10/20	Thu 10/21	Fri 10/22	Sat 10/23	Sun 10/24	Mon 10/25	Tue 10/26	Wed 10/27	Thu 10/28	Fri 10/29	Sat 10/30	Sun 10/31	Time
North Flow	0:00																																0:00
	0:30																																0:30
	1:00																																1:00
	1:30																																1:30
	2:00																																2:00
	2:30																																2:30
South Flow	3:00																																3:00
	3:30																																3:30
	4:00																																4:00
	4:30																																4:30
	5:00																																5:00
	5:30																																5:30
	6:00																																6:00
	6:30																																6:30
	7:00																																7:00
	7:30																																7:30
North Flow	8:00																																8:00
	8:30																																8:30
	9:00																																9:00
	9:30																																9:30
	10:00																																10:00
	10:30																																10:30
	11:00																																11:00
South Flow	11:30																																11:30
	12:00																																12:00
	12:30																																12:30
	13:00																																13:00
	13:30																																13:30
	14:00																																14:00
	14:30																																14:30
North Flow	15:00																																15:00
	15:30																																15:30
	16:00																																16:00
	16:30																																16:30
	17:00																																17:00
	17:30																																17:30
	18:00																																18:00
	18:30																																18:30
	19:00																																19:00
	19:30																																19:30
	20:00																																20:00
South Flow	20:30																																20:30
	21:00																																21:00
	21:30																																21:30
	22:00																																22:00
	22:30																																22:30
North Flow	23:00																																23:00
	23:30																																23:30
	0:00																																0:00

Preferred Flow

DATIS Reported Conditions Indicate Support for Non-Preferred Flow

DATIS Reported Conditions Do Not Indicate Support for Non-Preferred Flow

X Complaint

Source: Louisville International Airport  
Aircraft Flight Tracking and Noise Management System (AFTNMS)

# Daily Runway Use (SDF)

Tower Comments October 2021

Day	Date	Time	UTC	Comment
fri	1-Oct-21	1300-1330	1700-1730	Changed early due to gusty winds out of the south (Wind 120@11G17)
sat	2-Oct-21	0900-1130	1300-1530	Remained south flow due to weather moving in and forecasted winds 220@10
sun	3-Oct-21			
mon	4-Oct-21			
tue	5-Oct-21			
wed	6-Oct-21	0900-1230	1300-1630	Remaining south due to wind at altitude and weather south of the field moving north
thu	7-Oct-21			
fri	8-Oct-21	0800-0830	1200-1230	Early change to north flow due to fog in the area possibly requiring CAT II/III approaches
sat	9-Oct-21			
sun	10-Oct-21			
mon	11-Oct-21			
tue	12-Oct-21			
wed	13-Oct-21			
thu	14-Oct-21	0900-1330	1300-1730	Remained south flow due to current and forecasted wind
thu	14-Oct-21	2200-0000	0200-0400	Remained south flow due to forecasted winds greater than 15 knots out of the south
fri	15-Oct-21	0000-0230	0400-0630	Remained south flow due to forecasted winds greater than 15 knots out of the south
sat	16-Oct-21	2200-0000	0200-0400	Remained north flow due winds aloft and forecasted winds out of the northwest
sun	17-Oct-21	0000-0830	0400-1230	Remained north flow due strong winds out of the northwest (Wind 300@9)
sun	17-Oct-21	1830-2130	2230-0130	Remained north flow due to strong winds out of the northwest (Wind 280@11)
mon	18-Oct-21	0900-1000	1300-1400	Late change to a north flow due to heavy volume
tue	19-Oct-21			
wed	20-Oct-21	1230-1330	1630-1730	Early change to south flow due to winds out of the south (Wind 200@10)
thu	21-Oct-21			
fri	22-Oct-21			
sat	23-Oct-21	0900-0930	1300-1330	Late change due to issues with wind equipment and VFR traffic near LOU & JVV
sun	24-Oct-21			
mon	25-Oct-21			
tue	26-Oct-21	1400-2130	1800-0130	Remained north flow due to current wind and forecasted winds (Wind 010@10) out of the north
wed	27-Oct-21	2200-0000	0200-0400	South flow due to winds 25+ knots out of the south on final
thu	28-Oct-21	0000-0230	0400-0630	South flow due to winds 25+ knots out of the south on final
thu	28-Oct-21	0900-1230	1300-1630	Remained south flow due to winds aloft and weather moving in (Wind 120@9)
thu	28-Oct-21	2200-0000	0200-0400	Remained south flow due strong winds aloft out of the south
fri	29-Oct-21	0000-0230	0400-0630	Remained south flow due strong winds aloft out of the south
fri	29-Oct-21	1400-1830	1800-2230	Remained north flow due to strong winds out of the north (Wind 360@8) and precipitation in the area
sat	30-Oct-21			
sun	31-Oct-21	0530-0830	0930-1230	Remained north flow due to strong winds aloft out of the northwest
sun	31-Oct-21	1400-1930	1800-2330	Remained north flow due to strong winds out of the northwest on final (Wind 300@8, gusting to 20 knots on final)

# Daily Runway Use Uncorrected (SDF) November 2021

		Mon	Tue	Wed	Thu	Fri	Sat	Sun	Mon	Tue	Wed	Thu	Fri	Sat	Sun	Mon	Tue	Wed	Thu	Fri	Sat	Sun	Mon	Tue	Wed	Thu	Fri	Sat	Sun	Mon	Tue	
Flow	Time	11/1	11/2	11/3	11/4	11/5	11/6	11/7	11/8	11/9	11/10	11/11	11/12	11/13	11/14	11/15	11/16	11/17	11/18	11/19	11/20	11/21	11/22	11/23	11/24	11/25	11/26	11/27	11/28	11/29	11/30	Time
North Flow	0:00																														0:00	
	0:30																														0:30	
	1:00																														1:00	
	1:30																														1:30	
	2:00																														2:00	
	2:30																															2:30
South Flow	3:00																														3:00	
	3:30																														3:30	
	4:00																														4:00	
	4:30																														4:30	
	5:00																														5:00	
	5:30																														5:30	
	6:00																														6:00	
	6:30																														6:30	
	7:00																														7:00	
	7:30																														7:30	
North Flow	8:00																														8:00	
	8:30																														8:30	
	9:00																														9:00	
	9:30																														9:30	
	10:00																														10:00	
	10:30																														10:30	
	11:00																														11:00	
South Flow	11:30																														11:30	
	12:00																														12:00	
	12:30																														12:30	
	13:00																														13:00	
	13:30																														13:30	
	14:00																														14:00	
	14:30																														14:30	
	15:00																														15:00	
	15:30																														15:30	
	16:00																														16:00	
	16:30																														16:30	
	17:00																														17:00	
	North Flow	17:30																														17:30
18:00																															18:00	
18:30																															18:30	
19:00																															19:00	
19:30																															19:30	
20:00																															20:00	
20:30																															20:30	
21:00																															21:00	
21:30																															21:30	
22:00																															22:00	
South Flow	22:30																														22:30	
	23:00																														23:00	
	23:30																														23:30	
	0:00																														0:00	
Flow	Time	Mon	Tue	Wed	Thu	Fri	Sat	Sun	Mon	Tue	Wed	Thu	Fri	Sat	Sun	Mon	Tue	Wed	Thu	Fri	Sat	Sun	Mon	Tue	Wed	Thu	Fri	Sat	Sun	Mon	Tue	Time

# Daily Runway Use (SDF)

Tower Comments November 2021

Day	Date	Time	Comment
Mon	1-Nov-21	0000-0830	Winds 33008KT at 0000lcl
Mon	1-Nov-21	1400-2030	Winds 36008KT at 1320lcl with note that says staying north flow due to forecasted winds
Tue	2-Nov-21	0730-0830	note on log at 9 lcl stating staying north because of winds and forecasted winds.
Tue	2-Nov-21	1400-1530	note at 1600lcl stating we are staying north because winds keep going over tailwind component. Wind 35010KT.
Tue	2-Nov-21	2030-2130	stayed north because winds going over tailwind component.
Wed	3-Nov-21	1400-1500	at 1346lcl winds stated as 36008kt. Also note at 1545lcl that said we stayed north for winds to calm down and heavy traffic at JVV
Thu	4-Nov-21	1400-2130	1345lcl note says staying north due to forecasted winds 7+ knots out of the north
Sat	6-Nov-21	0900-0930	at 1006lcl note says we changed RWYs late due to issue with Derby C130 at National Guard Ramp
Sat	6-Nov-21	1400-1730	at 1400 lcl note says we are staying north flow due to excessive traffic around JVV
Sun	7-Nov-21	1400-1530	at 1357z (0857 lcl due to time change) log says we went north flow
Mon	8-Nov-21	0900-1330	at 0900 lcl note says staying south due to forecast wind 20008KT
Mon	8-Nov-21	2200-0000	2233 LCL note says remaining south flow due to winds on final 23KTS+ (winds at altitude)
Tue	9-Nov-21	0000-0230	0000 LCL note says remaining south flow due to winds on final 23KTS+ (winds at altitude)
Wed	10-Nov-21	0900-1230	0900 lcl staying south due to forecast winds 17008KT.
Wed	10-Nov-21	2200-0000	2200 lcl note says staying south due to strong winds at altitude out of the south
Thu	11-Nov-21	0000-0230	2200 lcl on 11/10/21, note says staying south due to strong winds at altitude out of the south
Mon	15-Nov-21	0200-0400	0147 lcl logged winds of 33008KT
Mon	15-Nov-21	0900-1330	at 0900 lcl note says staying south due to forecast winds additional note at 1052 with winds at 21010kt.
Mon	15-Nov-21	2200-0000	2200 lcl note says staying south due to strong winds at altitude out of the south
Tue	16-Nov-21	0000-0230	0000 lcl note says we stayed south due to strong winds out of the south. Refers to winds at altitude
Tue	16-Nov-21	0900-1330	0900 lcl note says staying south due to forecasted winds 19008KT.
Thu	18-Nov-21	1730-2130	at 1525 lcl note logged that we are staying north due to forecasted winds out of the NW and current wind 29015KT
Fri	19-Nov-21	0900-0930	at 0945 lcl logged late RWY change due to volume
Sat	20-Nov-21	0900-1130	0900 lcl note says we stayed south due to forecasted winds
Mon	22-Nov-21	1730-2130	1518 lcl note says winds forecasted 33008KT Winds at 1610 were 33010KT
Tue	23-Nov-21	2200-0000	2335 lcl note says staying south due to 25kts+ winds at 1000ft
Wed	24-Nov-21	0000-0230	stayed south for inbound due to the winds at 1000ft as stated above
Fri	26-Nov-21	1400-1500	1551 lcl note states we switched late due to operationally critical administrative functions taking priority OT and staffing issues
Sun	28-Nov-21	2300-0000	2234 lcl winds logged at 32008kt and at 2102 lcl they were 33010kt. Switched to south shortly after midnight as winds calmed down
Tue	30-Nov-21	1400-1430	late change at 1512 were logged at 28009kt. Might have been waiting to see what winds were going to change.
Tue	30-Nov-21	1600-2130	at 1614 RWY change occurred due to special air mission south of SDF conflicting with departures

# Daily Runway Use Uncorrected (SDF) December 2021

Flow	Time	Wed 12/1	Thu 12/2	Fri 12/3	Sat 12/4	Sun 12/5	Mon 12/6	Tue 12/7	Wed 12/8	Thu 12/9	Fri 12/10	Sat 12/11	Sun 12/12	Mon 12/13	Tue 12/14	Wed 12/15	Thu 12/16	Fri 12/17	Sat 12/18	Sun 12/19	Mon 12/20	Tue 12/21	Wed 12/22	Thu 12/23	Fri 12/24	Sat 12/25	Sun 12/26	Mon 12/27	Tue 12/28	Wed 12/29	Thu 12/30	Fri 12/31	Time
North Flow	0:00																X																0:00
	0:30																																0:30
	1:00																																1:00
	1:30																																1:30
	2:00							X																									2:00
	2:30																																2:30
	3:00																																3:00
South Flow	3:30							X																									3:30
	4:00		X																														4:00
	4:30								X								X																4:30
	5:00																																5:00
	5:30																																5:30
	6:00																																6:00
	6:30																																6:30
	7:00																																7:00
	7:30																																7:30
	8:00																																8:00
North Flow	8:30																																8:30
	9:00																																9:00
	9:30																																9:30
	10:00																																10:00
	10:30																																10:30
	11:00									X																				X			11:00
	11:30																																11:30
South Flow	12:00																																12:00
	12:30																																12:30
	13:00																																13:00
	13:30																																13:30
	14:00																																14:00
	14:30																																14:30
	15:00																																15:00
	15:30																																15:30
	16:00																																16:00
	16:30																																16:30
	17:00																																17:00
	17:30																																17:30
	18:00																																18:00
North Flow	18:30																																18:30
	19:00																																19:00
	19:30																																19:30
	20:00																																20:00
	20:30																																20:30
	21:00																																21:00
	21:30																																21:30
	22:00																																22:00
	22:30																																22:30
	23:00																																23:00
	23:30																																23:30
Flow	Time	Wed 12/1	Thu 12/2	Fri 12/3	Sat 12/4	Sun 12/5	Mon 12/6	Tue 12/7	Wed 12/8	Thu 12/9	Fri 12/10	Sat 12/11	Sun 12/12	Mon 12/13	Tue 12/14	Wed 12/15	Thu 12/16	Fri 12/17	Sat 12/18	Sun 12/19	Mon 12/20	Tue 12/21	Wed 12/22	Thu 12/23	Fri 12/24	Sat 12/25	Sun 12/26	Mon 12/27	Tue 12/28	Wed 12/29	Thu 12/30	Fri 12/31	Time

Preferred Flow

DATIS Reported Conditions Indicate Support for Non-Preferred Flow

DATIS Reported Conditions Do Not Indicate Support for Non-Preferred Flow

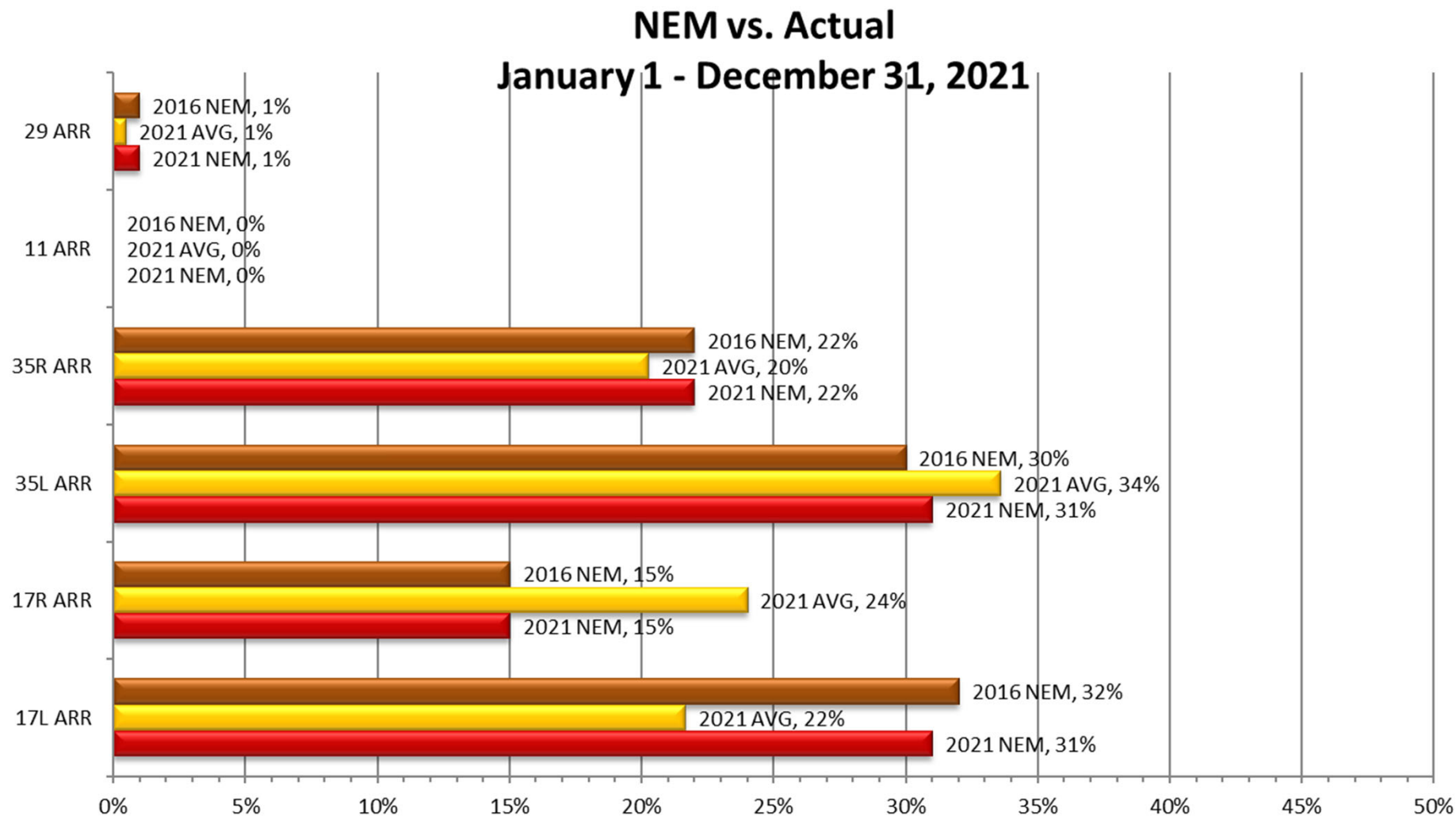
X Complaint

Source: Louisville International Airport  
Aircraft Flight Tracking and Noise Management System (AFTNMS)

# Daily Runway Use (SDF)

Tower Comments December 2021

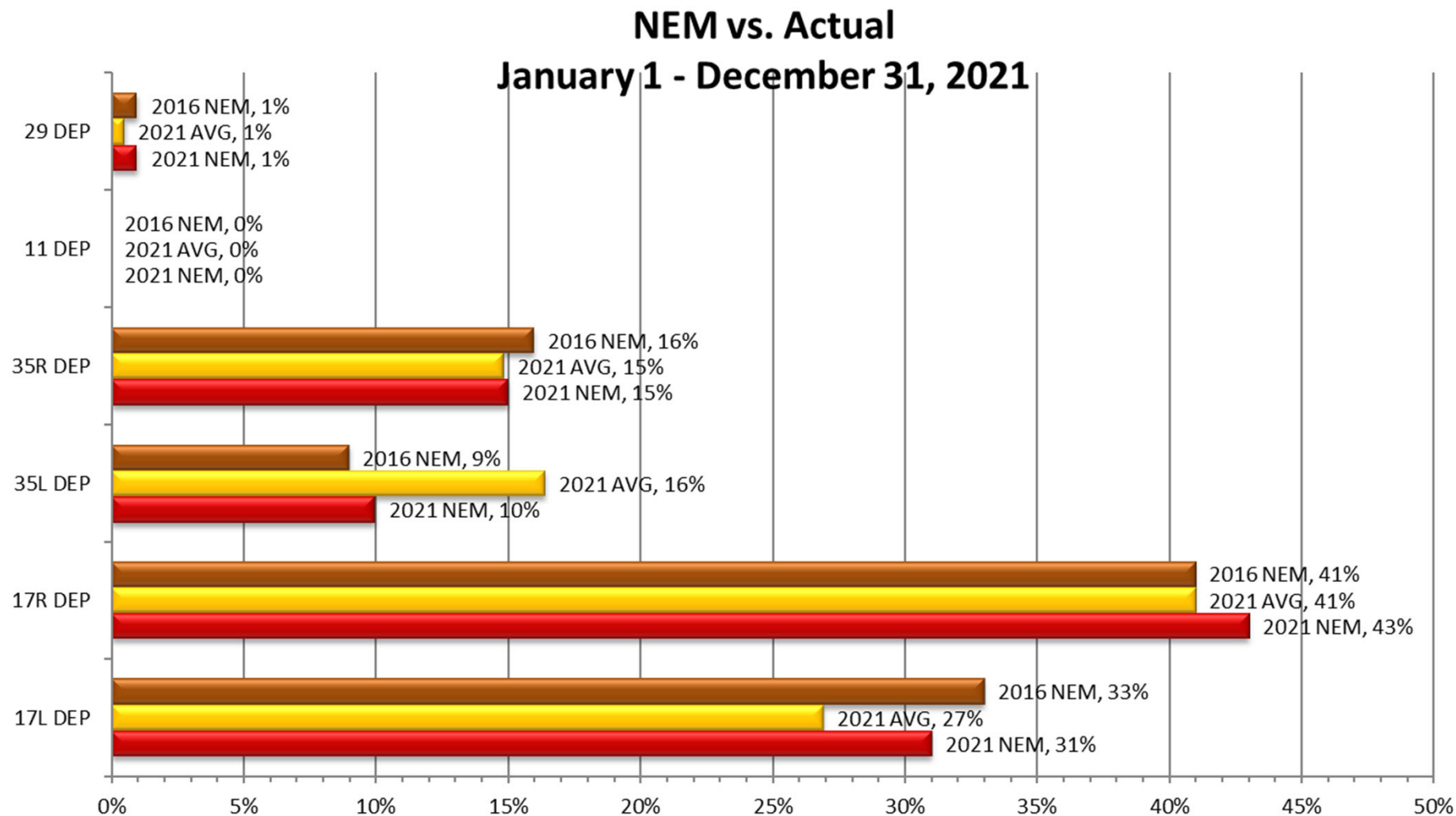
# Runway Use (SDF Arrivals)



Source: Louisville International Airport  
Aircraft Flight Tracking and Noise Management System (AFTNMS)



# Runway Use (SDF Departures)



Source: Louisville International Airport  
Aircraft Flight Tracking and Noise Management System (AFTNMS)

# Runway Use 0900L-1400L<sub>(SDF)</sub>

## Runway

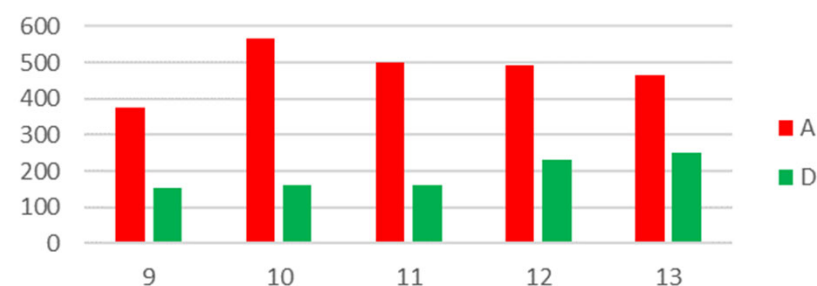
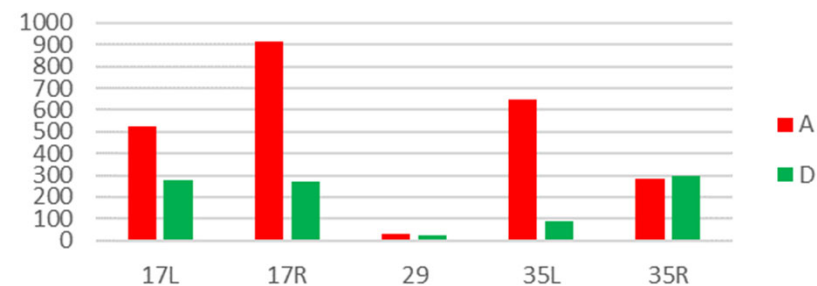
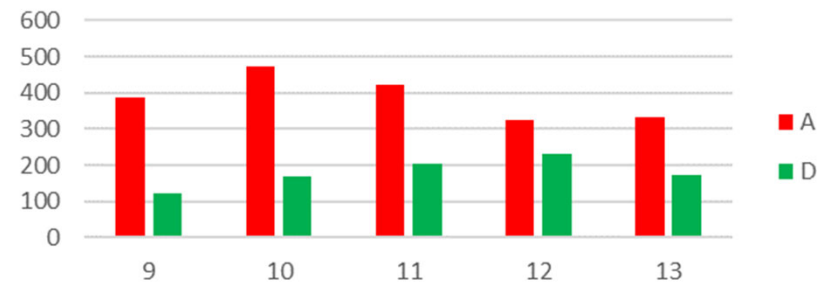
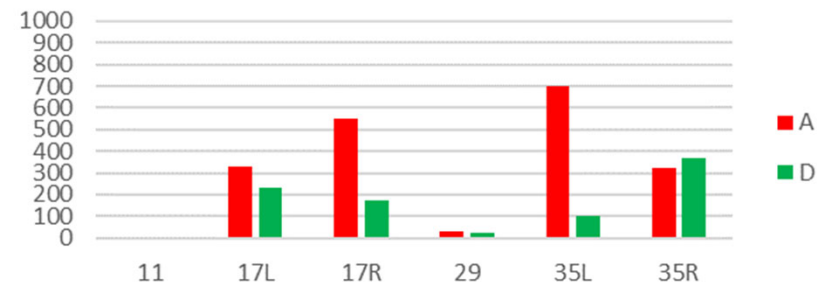
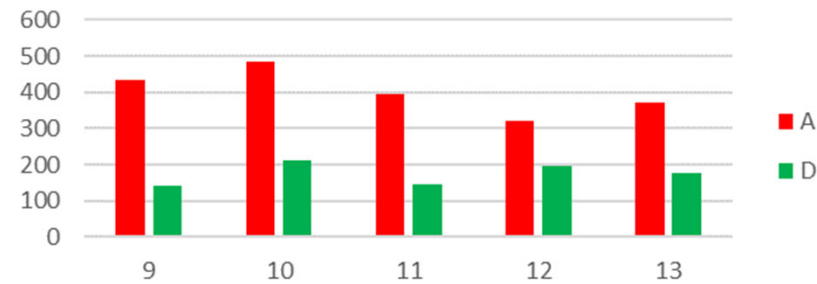
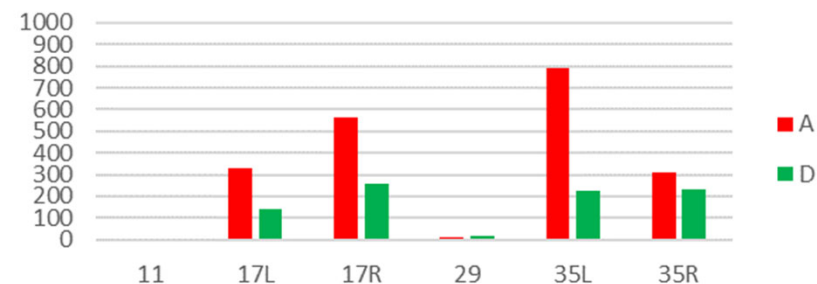
## Hour

October 2021

November 2021

December 2021

Source: Louisville International Airport  
Aircraft Flight Tracking and Noise Management System (AFTNMS)



# Gate Compliance by Runway

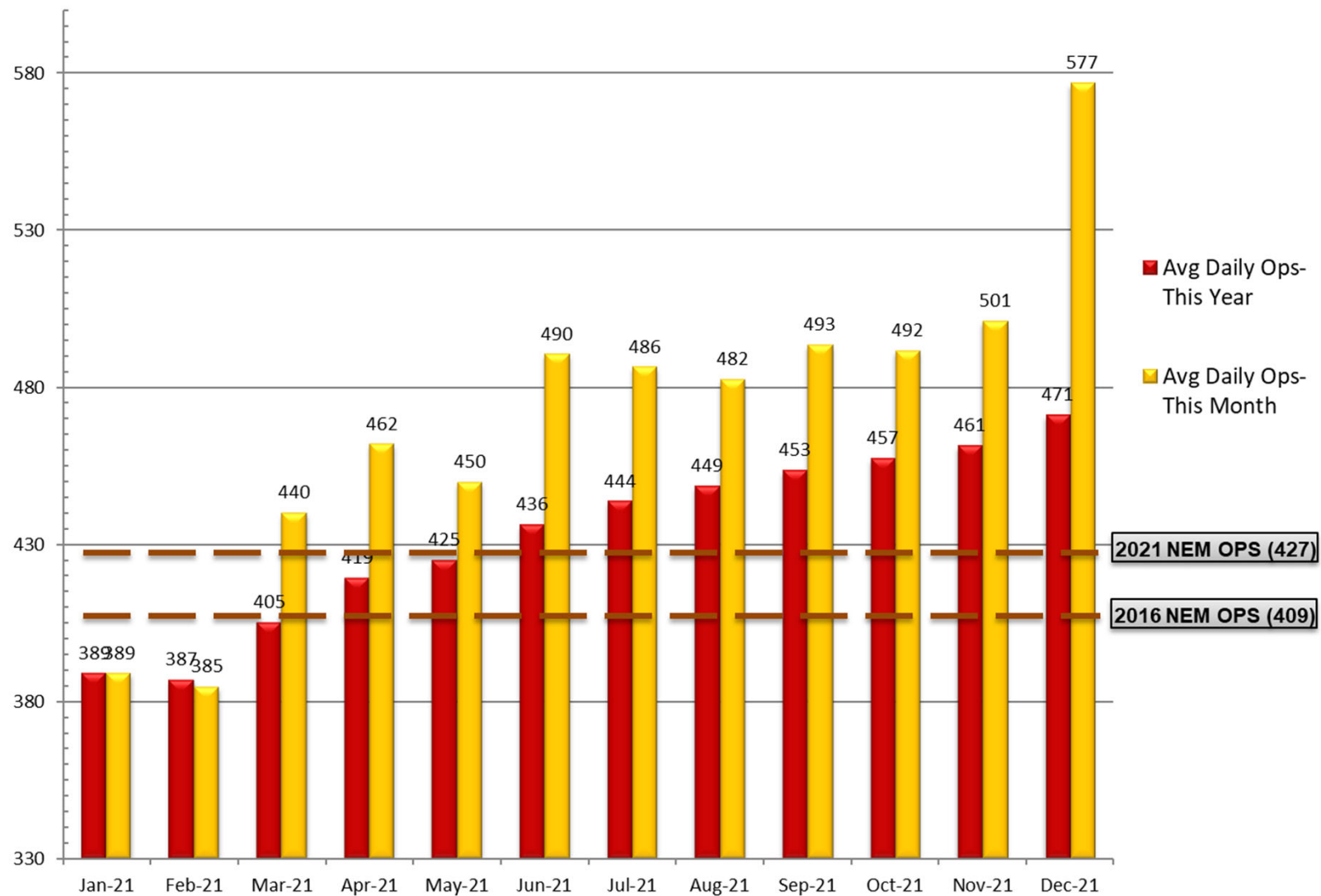
As of December 31, 2021

ARRIVALS Percent Compliant					Departure Percent Compliant					
Month	17L	17R	35L	35R	ARR AVG	17L	17R	35L	35R	DEP AVG
Jan-20	93%	95%	93%	91%	93%	76%	90%	71%	87%	81%
Feb-20	89%	94%	94%	93%	93%	80%	90%	78%	85%	83%
Mar-20	92%	94%	93%	90%	92%	78%	84%	78%	83%	81%
Apr-20	81%	94%	89%	91%	89%	70%	89%	73%	79%	78%
May-20	89%	95%	91%	93%	92%	74%	86%	74%	80%	79%
Jun-20	89%	94%	89%	87%	90%	76%	90%	70%	79%	79%
Jul-20	89%	94%	90%	90%	91%	83%	89%	54%	76%	76%
Aug-20	89%	94%	90%	90%	91%	85%	86%	64%	77%	78%
Sep-20	88%	94%	90%	90%	91%	84%	89%	64%	86%	81%
Oct-20	91%	94%	92%	92%	92%	76%	91%	73%	85%	81%
Nov-20	88%	95%	92%	88%	91%	74%	91%	72%	80%	79%
Dec-20	93%	96%	92%	91%	93%	73%	91%	77%	77%	80%
Jan-21	93%	95%	94%	91%	93%	78%	92%	70%	77%	79%
Feb-21	93%	94%	95%	92%	94%	72%	86%	73%	86%	79%
Mar-21	90%	96%	88%	91%	91%	72%	87%	64%	82%	76%
Apr-21	91%	95%	92%	89%	92%	68%	88%	75%	86%	79%
May-21	91%	95%	90%	89%	91%	83%	89%	69%	87%	82%
Jun-21	93%	96%	92%	91%	93%	80%	89%	67%	90%	82%
Jul-21	90%	94%	92%	91%	92%	82%	87%	76%	88%	83%
Aug-21	92%	95%	92%	93%	93%	82%	90%	71%	89%	83%
Sep-21	92%	93%	91%	94%	93%	79%	90%	67%	86%	81%
Oct-21	92%	95%	92%	91%	93%	78%	88%	66%	85%	79%
Nov-21	90%	94%	91%	90%	91%	74%	90%	73%	86%	81%
Dec-21	92%	97%	93%	90%	93%	68%	88%	69%	80%	76%
24 Month Avg.					92%					80%

Source: Louisville International Airport  
Aircraft Flight Tracking and Noise Management System (AFTNMS)

# Operations (SDF)

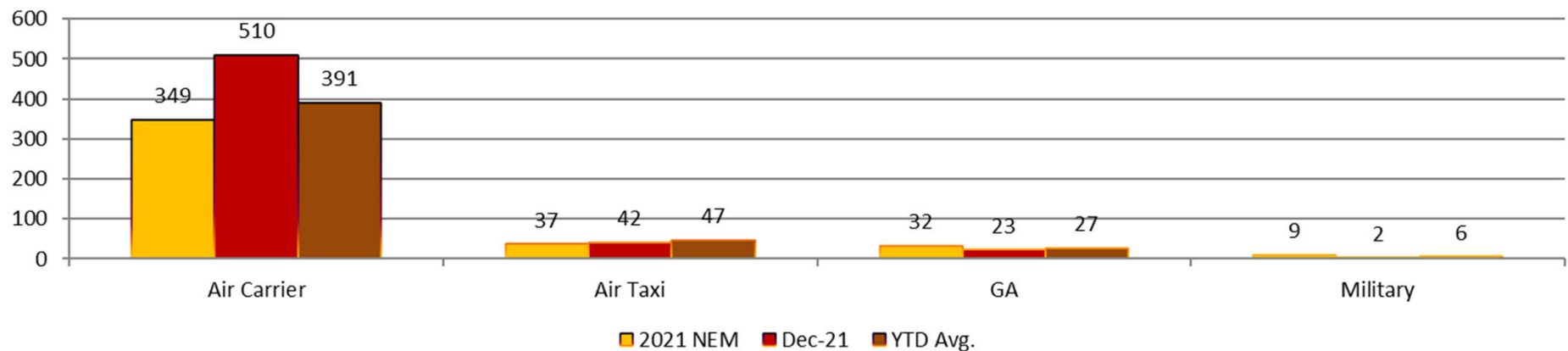
As of December 31, 2021



# Operations and Landing (SDF)

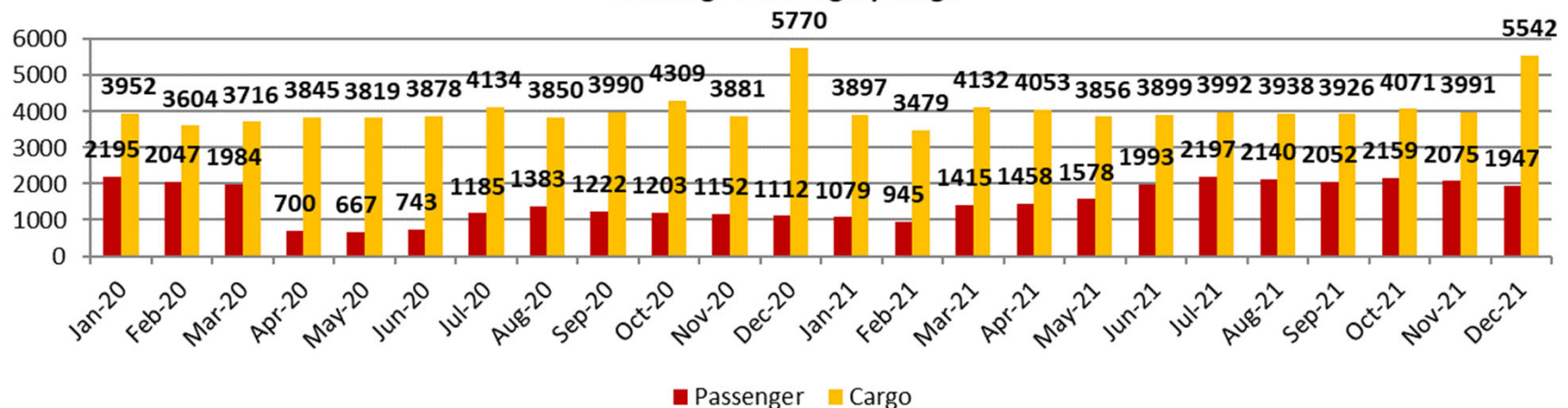
As of December 31, 2021

Average Day Operations by Category

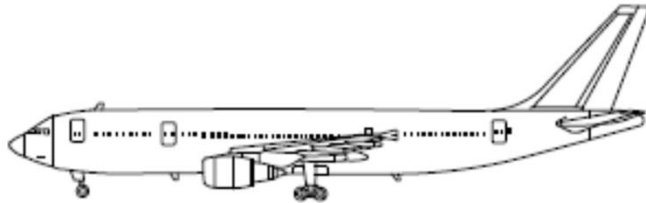


- **Air Carrier.** (AC) Aircraft with seating capacity of more than 60 seats or a maximum payload capacity of more than 18,000 pounds, carrying passengers or cargo for hire or compensation. This includes US and foreign-flagged carriers.
- **Air Taxi.** (AT) Aircraft designed to have a maximum seating capacity of 60 seats or less or a maximum payload capacity of 18,000 pounds or less, carrying passengers or cargo for hire or compensation.
- **General Aviation.** (GA) Takeoffs and landings of all civil aircraft, except for air carriers or air taxis.
- **Military.** (MIL) Operations by all classes of military takeoffs and landings at FAA and FTC facilities.

Landings Passenger/Cargo



# Sample Aircraft Types (SDF)



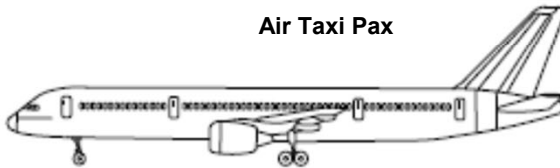
**A300**  
Air Carrier Cargo



**B767**  
Air Carrier Cargo



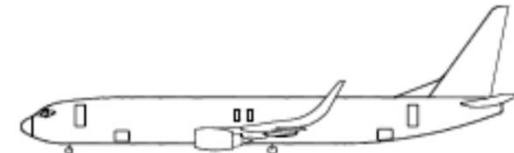
**E135/45**  
Air Taxi Pax



**B757**  
Air Carrier Cargo



**MD11**  
Air Carrier Cargo



**B737**  
Air Carrier Pax



**CRJ2**  
Air Taxi Pax



**E170**  
Air Carrier Pax



**MD80**  
Air Carrier Pax



**CRJ9**  
Air Carrier Pax