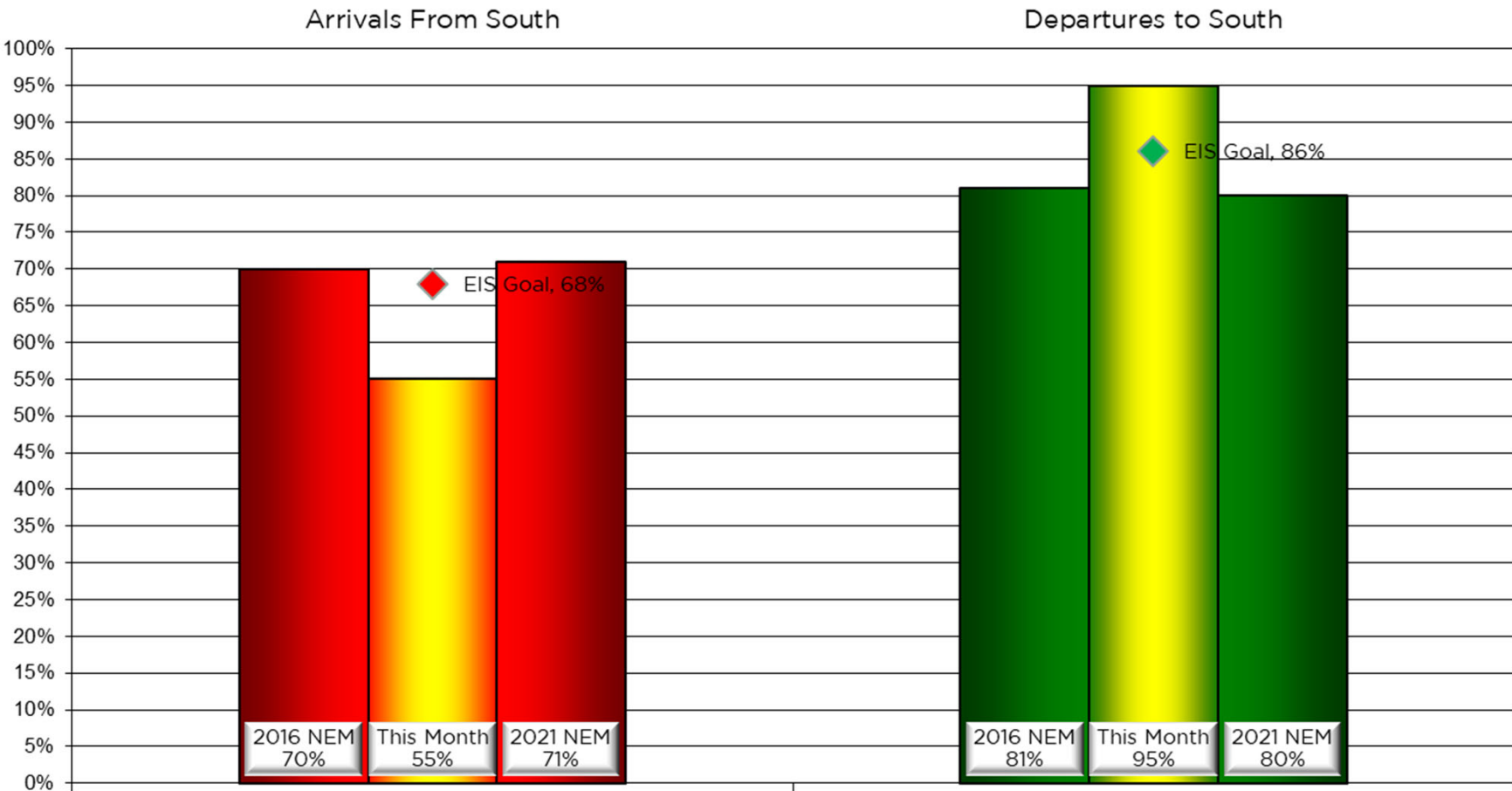


****SPECIAL MEETING****

**Community Noise Forum
Monday, September 26, 2022
Agenda**

- I. Call to order: 6:00 PM
- II. Approval of July 25, 2022, Minutes
- III. Active Noise Cancellation Grant Update
- IV. Airspace Project Update
- V. Part 150 NCP
 - A. Noise Insulation Program
 - B. Contraflow Exceptions
- VI. Current Noise Concerns
 - A. Noise Concerns/Complaints
 - B. Runway Utilization
 - C. Construction and Maintenance Activity
- VII. Guest Comments
- VIII. Announcements
- IX. Next Meeting: November 28, 2022
- X. Adjournment

Monthly Contraflow July 1-31, 2022



Nightly Runway Use Summary - July 2022

(from 10:00 PM date list in first column to 7:00 AM the following morning)

		% of all arrivals from the south									% of all departures to the south																			
Date	Day	* in compliance	Runway#						Unknown Runway Use	Notes / Comments	** in compliance	Runway#						Unknown Runway Use	Notes / Comments											
			11	17L	17R	29	35L	35R				11	17L	17R	29	35L	35R													
07-01-22	Fri	91%			1	8			56	35	0				37	48			6	9	0									
07-02-22	Sat																													
07-03-22	Sun																													
07-04-22	Mon	62%			13	25			45	17	0	050-170@3-9kts			35	65						0								
07-05-22	Tue	0%			39	61					0	180-250@4-10kts			39	61							0							
07-06-22	Wed	95%			1	4			60	35	0				36	46			13	5			0							
07-07-22	Thu	0%			44	56					0	010-350@3-12kts			37	63								0						
07-08-22	Fri	57%			19	23		1	33	24	0	070-190@4-10kts			40	56			2	2					0					
07-09-22	Sat																													
07-10-22	Sun																													
07-11-22	Mon	0%			41	59					0	180-270@4-9kts			37	63										0				
07-12-22	Tue	96%			1	3			54	42	0				35	60			4	1						0				
07-13-22	Wed	75%			11	14			46	29	0				37	55			5	3							0			
07-14-22	Thu	7%			34	59			6	1	0	010-330@2-8kts			36	64											0			
07-15-22	Fri	94%			1	5			63	31	0				39	55			3	3							0			
07-16-22	Sat																													
07-17-22	Sun																													
07-18-22	Mon	97%			1	2			62	35	0				25	64			6	5								0		
07-19-22	Tue	0%			43	57					0	120-190@4-9kts			39	61												0		
07-20-22	Wed	96%			1	3			59	37	0				36	57			6	1								0		
07-21-22	Thu	93%			1	6			57	36	0				32	59			6	3								0		
07-22-22	Fri	93%			4	3			57	36	0				36	59			3	2								0		
07-23-22	Sat																													
07-24-22	Sun																													
07-25-22	Mon	98%			1	1			61	37	0				32	51			12	5								0		
07-26-22	Tue	0%			40	60					0	110-310@2-7kts			40	60													0	
07-27-22	Wed	0%			44	56					0	170-280@3-9kts			42	58													0	
07-28-22	Thu	6%			39	55			5	1	0	010-350@3-25kts,g36,ts,			38	62													0	
07-29-22	Fri	96%			1	3			62	34	0				35	57			5	3									0	

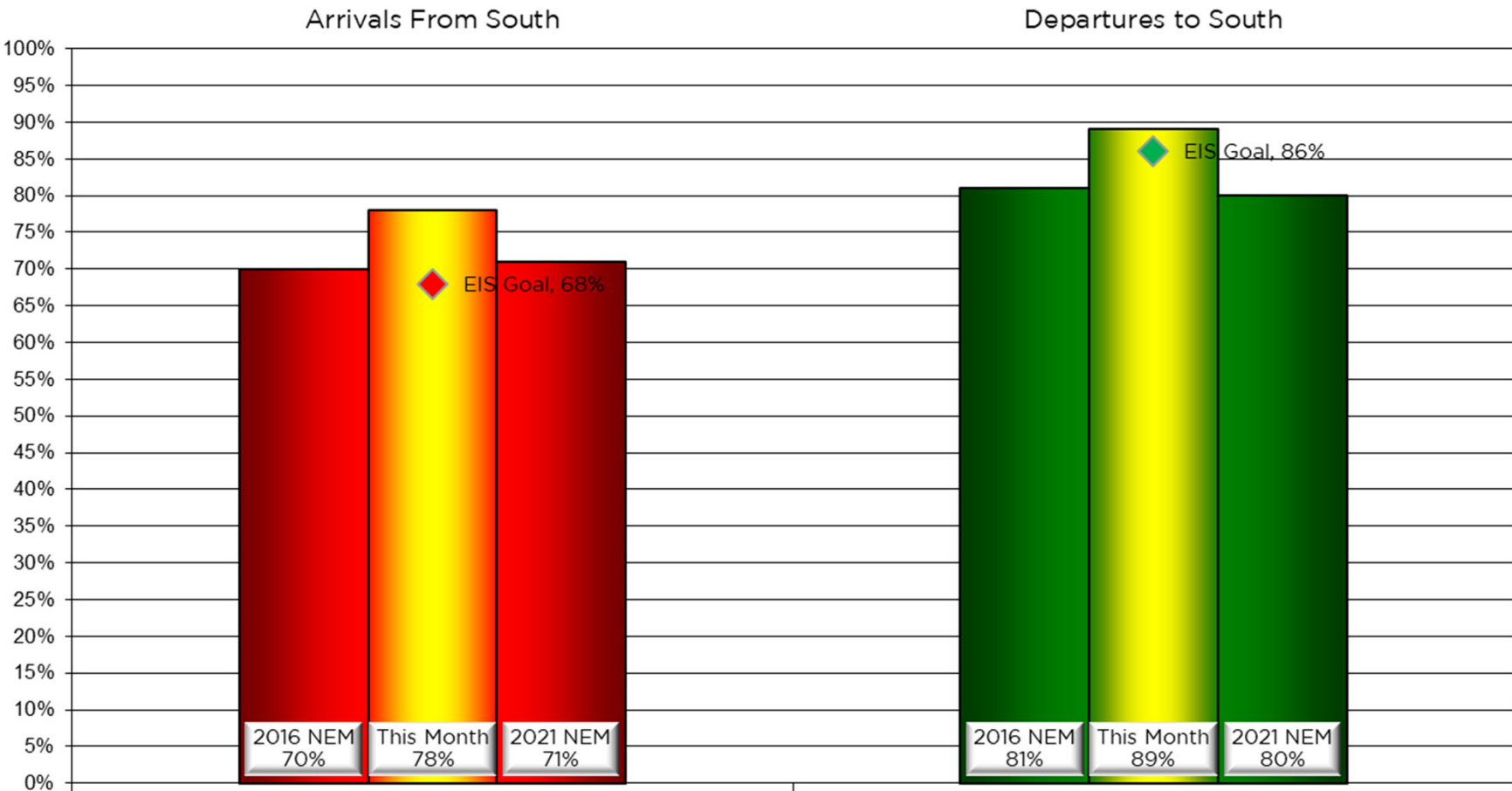
Preferred Flow

DATIS Reported Conditions Indicate Support for Non-Preferred Flow

DATIS Reported Conditions Do Not Indicate Support for Non-Preferred Flow



Monthly Contraflow August 1-31, 2022



Nightly Runway Use Summary - August 2022

(from 10:00 PM date list in first column to 7:00 AM the following morning)

		% of all arrivals from the south									% of all departures to the south								
Date	Day	* in compliance	Runway#						Unknown Runway Use	Notes / Comments	** in compliance	Runway#						Unknown Runway Use	Notes / Comments
			11	17L	17R	29	35L	35R				11	17L	17R	29	35L	35R		
08-01-22	Mon	55%		21	24		37	18	0		95%		39	56		4	1	0	
08-02-22	Tue	97%		1	2		61	36	0		93%		34	59		5	2	0	
08-03-22	Wed	95%		2	3		59	36	0		91%		31	60		6	3	0	
08-04-22	Thu	97%			3		59	38	0		92%		38	54		5	3	0	
08-05-22	Fri	0%		60	40				0	130-220@5-17kts	100%		42	58				0	
08-06-22	Sat																		
08-07-22	Sun																		
08-08-22	Mon	0%		42	58				0	180-260@5-21kts	100%		39	61				0	
08-09-22	Tue	1%		38	61			1	0	050-270@3-23kts,g33	99%		42	57			1	0	
08-10-22	Wed	92%		3	5		57	35	0		91%		33	58		6	3	0	
08-11-22	Thu	100%					63	37	0		0%					66	34	0	350-010@17-21kts
08-12-22	Fri	96%		2	2		61	35	0		93%		35	58		3	4	0	
08-13-22	Sat																		
08-14-22	Sun																		
08-15-22	Mon	99%			1		60	39	0		90%		34	56		7	3	0	
08-16-22	Tue	97%			3		60	37	0		87%		37	50		9	4	0	
08-17-22	Wed	96%		1	3		59	37	0		93%		38	55		4	3	0	
08-18-22	Thu	97%		1	2		60	37	0		92%		32	60		5	3	0	
08-19-22	Fri	92%		2	6		61	31	0		94%		38	56		3	3	0	
08-20-22	Sat																		
08-21-22	Sun																		
08-22-22	Mon	95%		2	3		55	40	0		90%		31	59		6	4	0	
08-23-22	Tue	97%		3			63	34	0		89%		37	52		8	3	0	
08-24-22	Wed	95%		1	4		56	39	0		90%		36	54		7	3	0	
08-25-22	Thu	98%			2		62	36	0		91%		32	59		6	3	0	
08-26-22	Fri	94%		1	5		60	34	0		92%		36	56		3	5	0	
08-27-22	Sat																		
08-28-22	Sun																		
08-29-22	Mon	0%		37	63				0	010-350@1-13kts	100%		39	61				0	
08-30-22	Tue	98%		1	1		55	43	0		91%		35	56		6	3	0	
08-31-22	Wed	98%		1	1		65	33	0		88%		34	54		7	5	0	

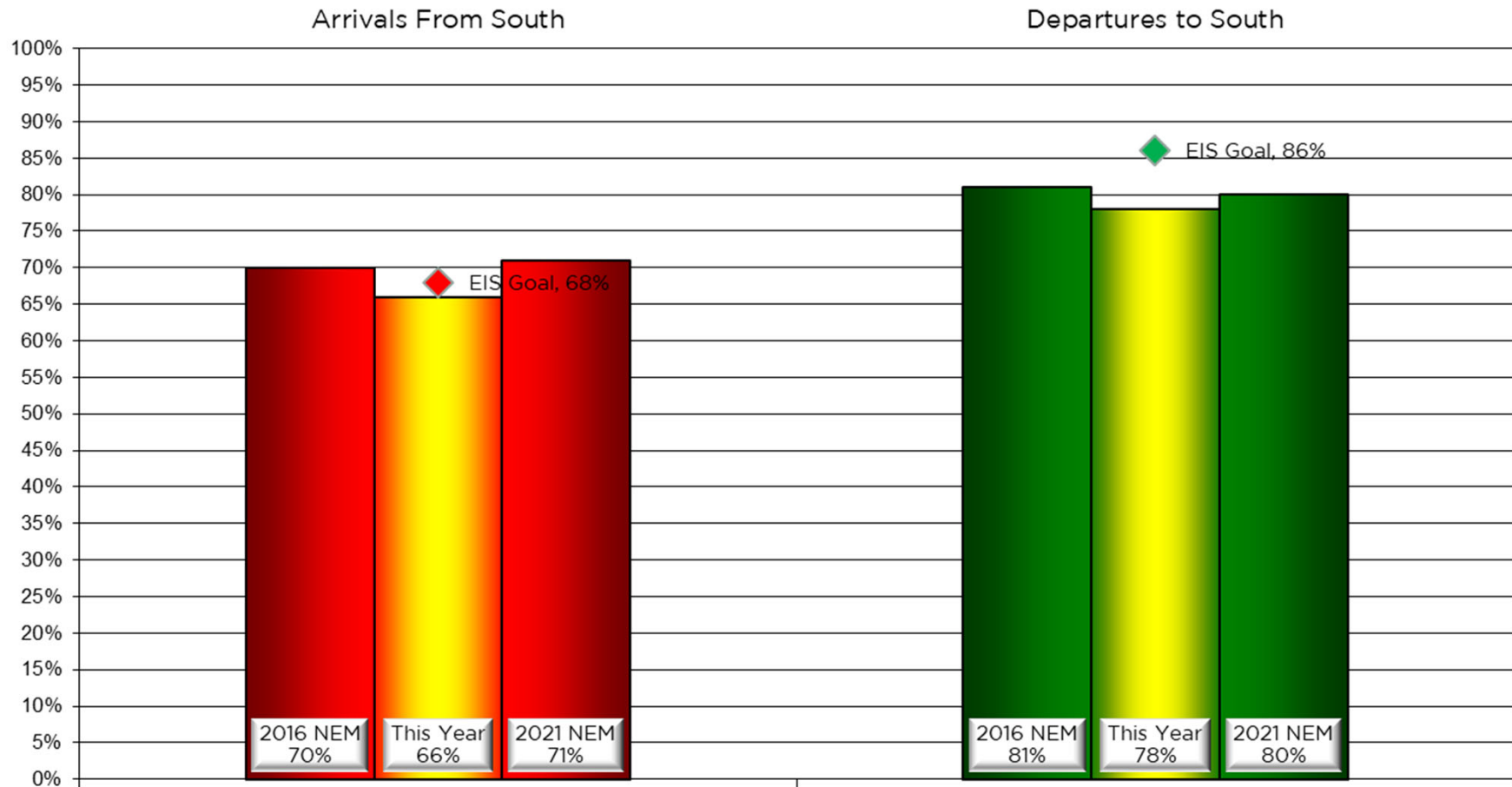
Preferred Flow

DATIS Reported Conditions Indicate Support for Non-Preferred Flow

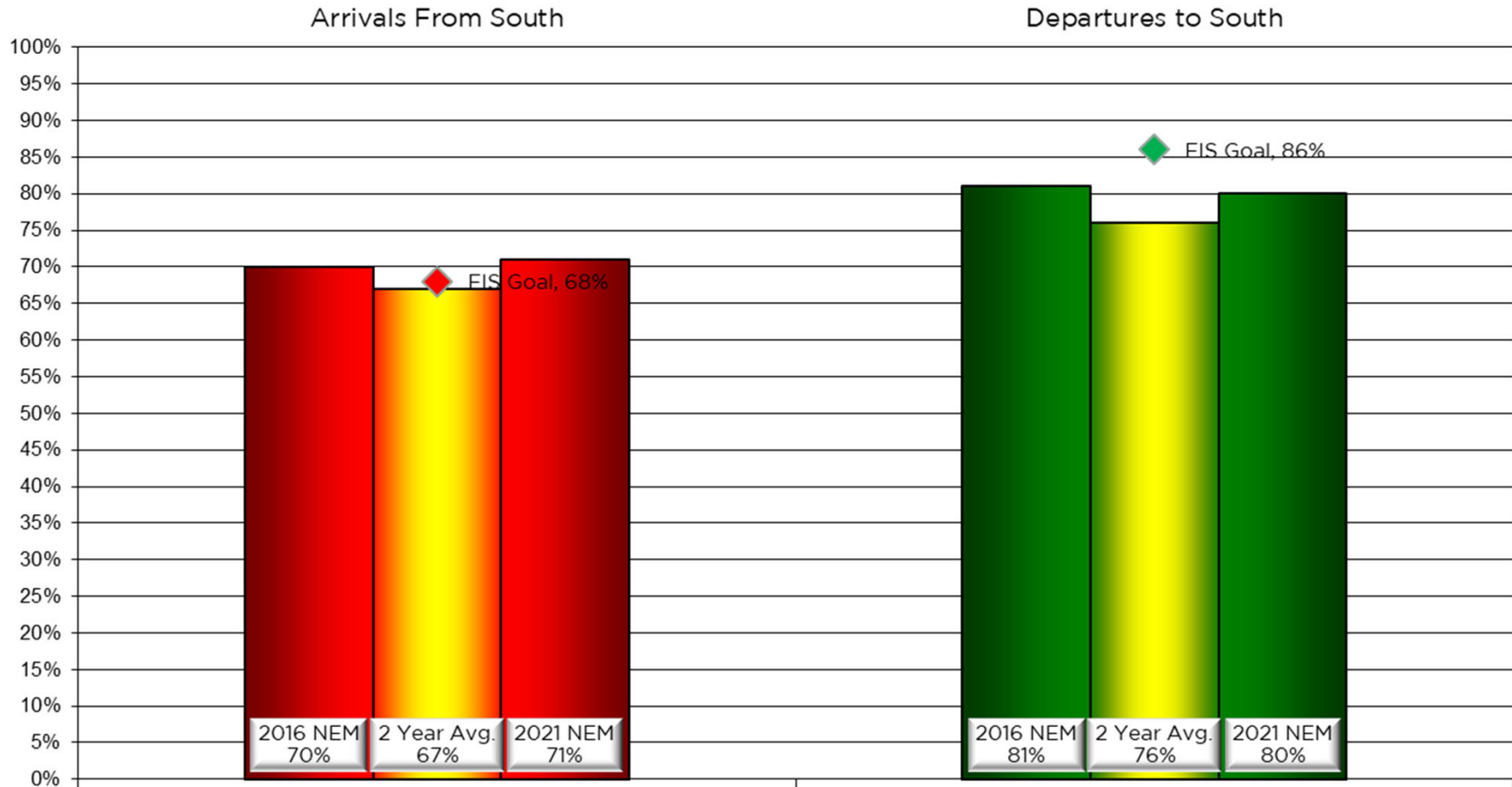
DATIS Reported Conditions Do Not Indicate Support for Non-Preferred Flow



Contraflow This Year As of August 31, 2022



Contraflow 2 Year Average September 2020 - August 2022



Year-to-Year by Month Percent* Contraflow

Arrivals From the South (Goal 68%)										Departures to the South (Goal 86%)									
	2015	2016	2017	2018	2019	2020	2021	2022	Avg		2015	2016	2017	2018	2019	2020	2021	2022	Avg
Jan	76%	69%	65%	60%	75%	56%	71%	78%	69%	Jan	76%	69%	61%	72%	69%	82%	71%	65%	71%
Feb	66%	80%	58%	67%	78%	78%	87%	67%	73%	Feb	76%	67%	77%	70%	57%	43%	45%	56%	61%
Mar	71%	63%	79%	84%	82%	65%	51%	62%	70%	Mar	66%	77%	62%	61%	89%	64%	77%	77%	72%
Apr	53%	86%	56%	73%	65%	71%	62%	64%	66%	Apr	77%	73%	80%	72%	82%	69%	75%	82%	76%
May	75%	62%	75%	43%	65%	71%	71%	51%	64%	May	80%	80%	80%	89%	90%	90%	63%	83%	82%
Jun	57%	79%	74%	74%	50%	69%	65%	67%	67%	Jun	91%	83%	93%	91%	91%	88%	84%	70%	86%
Jul	74%	59%	85%	90%	75%	72%	70%	55%	73%	Jul	80%	91%	85%	77%	87%	91%	76%	95%	85%
Aug	86%	76%	79%	72%	88%	82%	74%	78%	79%	Aug	91%	90%	90%	88%	89%	87%	88%	89%	89%
Sep	95%	88%	85%	80%	83%	83%	63%		83%	Sep	73%	93%	31%	87%	77%	85%	90%		78%
Oct	86%	81%	81%	77%	79%	71%	69%		77%	Oct	74%	81%	82%	76%	78%	72%	76%		77%
Nov	59%	74%	69%	76%	70%	51%	61%		68%	Nov	88%	77%	75%	54%	72%	78%	81%		73%
Dec	55%	75%	74%	72%	76%	67%	56%		69%	Dec	79%	62%	74%	61%	72%	69%	80%		71%
Avg	71%	74%	73%	72%	74%	70%	67%	65%		Avg	79%	79%	74%	75%	79%	77%	76%	77%	



NOISE COMMENT REPORT

LOUISVILLE

REGIONAL AIRPORT AUTHORITY



July 2022

Comments (SDF/LOU)

July 2022

Street	Zip Code	CNF Quad / 2021 DNL	Time Received	Time	Airport	Disturbance Type	Status	Operation or Comment Type ¹	Deviation Type ²	Comments ³	Number of Contacts
Administration Dr	40209	UNK	2022-07-01 02:10:00	2022-07-01 02:10:00	SDF	Too Much Noise	Investigated	Non-Standard	Weather	I know you can't do anything tonight but damn it is loud out there.	1
Greenup RD	40217	NE (<60)	2022-07-01 09:29:00	2022-07-01 09:29:00	SDF	Too Much Noise	Investigated	Non-Standard	Weather	Why are the UPS bombing raids still going on? Why are they flying in from the north when they are supposed to be coming in from the south. Why is it when they fly over, they make it a point to rev-up the engines to make it sound even louder? Why can't they just coast in? I have seen them do that before. Can you look into that Bob? It is your job. (Representative of 2 additional comments received within the hour.)	3
York River RD	40214	SW (<60)	2022-07-02 05:48:00	2022-07-02 03:30:00	SDF	Aircraft Off Course	Investigated	Standard	None	This morning I was awoken early (3:30-4:00 a.m.) from UPS planes taking off south on the west runway banking turning ESE. Some were banking some not. Either way it takes only 1 to wake you up. Afternoons are getting worse as well with the same issue as above. You cannot sit outside and enjoy the evenings from 4:00 - 7:00 p.m. it is so loud and annoying. We have a noise ordinance in this city, and it seems UPS keeps violating it.	1
Kings Hwy	40205	N/A	2022-07-06 14:25:00	2022-07-04 22:40:00	LOU	Noise At Wrong Time	Investigated	Non-Standard	Ops	Plane flying in loops at night. Call number N456SP.	1

- Standard:** Indicates the "Most Preferred" runway configuration was being utilized at the time of the comment.
Non-Standard: Indicates that a "Lesser Preferred" runway configuration was being utilized at the time of the comment.
QHP: QuieterHome Program
- This column is used to indicate the conditions which most likely necessitated a deviation from the standard procedures.
- Comments may be edited for space, format, or unrelated content.

Comments (SDF/LOU)

July 2022

Street	Zip Code	CNF Quad / 2021 DNL	Time Received	Time	Airport	Disturbance Type	Status	Operation or Comment Type ¹	Deviation Type ²	Comments ³	Number of Contacts
York River RD	40214	SW (<60)	2022-07-06 05:59:00	2022-07-06 05:59:00	SDF	Aircraft Off Course	Investigated	Standard	None	Back from a vacation, first day back this morning and awoken at 4:30 a.m. with UPS takeoffs from west runway departing south, turning banking WSW some more than others. The UPS flight that departed 5-5:30 a.m. shook windows and woke the family up and they were using noise machines so they could sleep - wow - this has got to stop.	1
Kings Hwy	40205	N/A	2022-07-06 14:25:00	2022-07-06 11:00:00	LOU	Aircraft Too Low	Investigated	Standard	None	Large jet taking off at 11:00 am today. The jet seemed too large to be taking off from Bowman Field and flying less than 500 ft altitude over homes. The noise level was very loud. Call number C525 Cessna 525 Citation jet.	1
Ardmore Dr	40217	NE (<60)	2022-07-06 17:34:00	2022-07-06 17:34:00	SDF	Noise At Wrong Time	Investigated	Non-Standard	None	I got woke up this morning between 4 and 5:00 a.m. by the airplane noise. Trying to watch TV now with all the doors and windows closed and cannot hear the TV. They should do something about it.	1
Holsclaw Hill Rd	40109	SW (60-65)	2022-07-07 04:20:00	2022-07-07 04:20:00	SDF	Aircraft Too Low	Investigated	Standard	None	The airplanes are flying low. Honolulu just went over and shook the house. Several of your 747's going over show 2,000' minus the elevation that we are at, and it is not very nice. I don't know why we cannot get these planes higher and off of our house. They are extremely loud and extremely low. Nothing has been changed. We are not sleeping.	1

1. **Standard:** Indicates the "Most Preferred" runway configuration was being utilized at the time of the comment.
Non-Standard: Indicates that a "Lesser Preferred" runway configuration was being utilized at the time of the comment.
QHP: QuieterHome Program
2. This column is used to indicate the conditions which most likely necessitated a deviation from the standard procedures.
3. Comments may be edited for space, format, or unrelated content.

Comments (SDF/LOU)

July 2022

Street	Zip Code	CNF Quad / 2021 DNL	Time Received	Time	Airport	Disturbance Type	Status	Operation or Comment Type ¹	Deviation Type ²	Comments ³	Number of Contacts
Greenup RD	40217	NE (<60)	2022-07-07 18:25:00	2022-07-07 18:25:00	SDF	Constant Noise	Investigated	Non-Standard	Weather	The UPS bombing are going on. They were going on when I left at 11:00 a.m. and they are still going on non-stop to the north.	1
Greenup RD	40217	NE (<60)	2022-07-07 23:04:00	2022-07-07 23:04:00	SDF	Constant Noise	Investigated	Non-Standard	Weather	The UPS bombing raids are going non-stop. It is 11:00 p.m. and they have been going all day. People need to sleep. (Representative of 12 additional comments received within the hour.)	13
York River RD	40214	SW (<60)	2022-07-08 06:00:00	2022-07-08 04:20:00	SDF	Aircraft Off Course	Investigated	Standard	None	Same schedule, Wednesday, Thursday, Friday each day same as weeks previous with some days worse than others. West runway south departures banking turning earlier than others WSW heading. This morning I witnessed 1 flight at 4:20-4:24 a.m. that took off and stayed east of Grade Lane and did not bank until it was past Outerloop. I feel that is why I hear some and not awoken by others that take off same day and same time based upon flight tracker radar 24.	1
Ardmore Dr	40217	NE (<60)	2022-07-08 10:15:00	2022-07-08 10:15:00	SDF	Vibrations	Investigated	Non-Standard	Weather	I am calling to inquire about the airport noise. I have not been able to check any kind of damage, but I do know that the windows have gotten looser. It has been going on for some time, but it has gotten worse. I feel like I need to call and make a complaint because it has disrupted things around the house.	1

1. **Standard:** Indicates the “Most Preferred” runway configuration was being utilized at the time of the comment.
Non-Standard: Indicates that a “Lesser Preferred” runway configuration was being utilized at the time of the comment.
QHP: QuieterHome Program
2. This column is used to indicate the conditions which most likely necessitated a deviation from the standard procedures.
3. Comments may be edited for space, format, or unrelated content.

Comments (SDF/LOU)

July 2022

Street	Zip Code	CNF Quad / 2021 DNL	Time Received	Time	Airport	Disturbance Type	Status	Operation or Comment Type ¹	Deviation Type ²	Comments ³	Number of Contacts
Greenup RD	40217	NE (<60)	2022-07-08 16:38:00	2022-07-08 16:38:00	SDF	Constant Noise	Investigated	Standard	None	The bombing raids are starting. Going on all night. Starting again.	1
York River RD	40214	SW (<60)	2022-07-09 06:32:00	2022-07-09 06:31:00	SDF	Aircraft Off Course	Investigated	Standard	None	Just when you thought it could not get any worse. I was awoken early this morning by west runway departing flights heading south and turning and banking WSW. I recorded over 70 dBs on my noise meter inside my bedroom window. I will provide pics if needed. It could have been low ceiling cloud cover but still it was loud and woke me up on my off day I could have slept in. This is not good for my health. It was a low ceiling and that causes more sound, why don't the tower and UPS recognize it and takeoff straight and low then turn when your past 264 or South Park hill. This would keep noise east of Grade Lane where there is a dump, and no one is trying to sleep!	1
Greenup RD	40217	NE (<60)	2022-07-11 22:49:00	2022-07-11 22:49:00	SDF	Over Use of Runway	Investigated	Non-Standard	None	The UPS bombing raids are going non-stop. They are coming in from the north. They are supposed to be coming in from the south. Why? Have you looked into that yet?	1

- Standard:** Indicates the "Most Preferred" runway configuration was being utilized at the time of the comment.
Non-Standard: Indicates that a "Lesser Preferred" runway configuration was being utilized at the time of the comment.
QHP: QuieterHome Program
- This column is used to indicate the conditions which most likely necessitated a deviation from the standard procedures.
- Comments may be edited for space, format, or unrelated content.

Comments (SDF/LOU)

July 2022

Street	Zip Code	CNF Quad / 2021 DNL	Time Received	Time	Airport	Disturbance Type	Status	Operation or Comment Type ¹	Deviation Type ²	Comments ³	Number of Contacts
W. Ormsby	40203	NW (60-65)	2022-07-11 22:53:00	2022-07-11 22:53:00	SDF	Noise At Wrong Time	Investigated	Non-Standard	None	It is 11:00 p.m., there is no wind to speak of and we have planes going over like crazy. The night before that, and before that, and before that we have had planes. I am highly skeptical that is necessary that you fly planes over the city on all these nights.	1
Ardmore Dr	40217	NE (<60)	2022-07-12 17:50:00	2022-07-12 04:00:00	SDF	Too Much Noise	Investigated	Standard	None	The airplanes woke me up at 4:00 a.m. this morning and this evening I am trying to watch TV and cannot even hear the TV.	1
York River RD	40214	SW (<60)	2022-07-12 05:46:00	2022-07-12 05:46:00	SDF	Aircraft Off Course	Investigated	Standard	None	Some, not all UPS departures from west runway turning/banking more WSW than others. I witness the takeoff at 5:30-5:35 a.m. turning and banking west of Grade Lane. The angle of elevation was up well more than others. it is these types of departures that start at 3:30 a.m. in the morning that need to be addressed and are causing the most noise. Afternoon UPS flights as well.	1
Greenup RD	40217	NE (<60)	2022-07-12 17:54:00	2022-07-12 17:54:00	SDF	Constant Noise	Investigated	Non-Standard	Weather	Why are the UPS bombing raids going non-stop? I have been home about 45 minutes and the UPS bombing raids have not stopped. Why do they go 24/7 and never stop? Do your job! Put regulations on UPS. They do not own this city and they do not own the world.	1

- Standard:** Indicates the "Most Preferred" runway configuration was being utilized at the time of the comment.
Non-Standard: Indicates that a "Lesser Preferred" runway configuration was being utilized at the time of the comment.
QHP: QuieterHome Program
- This column is used to indicate the conditions which most likely necessitated a deviation from the standard procedures.
- Comments may be edited for space, format, or unrelated content.

Comments (SDF/LOU)

July 2022

Street	Zip Code	CNF Quad / 2021 DNL	Time Received	Time	Airport	Disturbance Type	Status	Operation or Comment Type ¹	Deviation Type ²	Comments ³	Number of Contacts
Greenup RD	40217	NE (<60)	2022-07-12 18:28:00	2022-07-12 18:28:00	SDF	Constant Noise	Investigated	Non-Standard	Weather	It is 6:30 p.m. and the bombing raids are still going. (Representative of 3 additional comments received within the hour.)	4
York River RD	40214	SW (<60)	2022-07-13 05:53:00	2022-07-13 05:00:00	SDF	Aircraft Off Course	Investigated	Standard	None	The south UPS departures from the west runway were extremely loud again today. Several departures at 5:00 a.m. and 5:20 a.m. were a lot louder as witnessed by myself and the ring camera I have installed in my back patio door. These banked and turned and banked more west earlier and were a lot louder than others.	1
Greenup RD	40217	NE (<60)	2022-07-13 20:55:00	2022-07-13 20:55:00	SDF	Constant Noise	Investigated	Non-Standard	Weather	Why are the UPS bombing raids still going on? It is almost 9:00 p.m. What's going on? Do something about it.	1
Greenup RD	40217	NE (<60)	2022-07-13 22:55:00	2022-07-13 22:55:00	SDF	Too Much Noise	Investigated	Non-Standard	None	The bombing raids are still going. It is almost 11:00 p.m. Why are they still going.	1
Greenup RD	40217	NE (<60)	2022-07-14 10:41:00	2022-07-14 10:41:00	SDF	Noise At Wrong Time	Investigated	Standard	None	Why are the bombing raids going on? When are you going to do your job? They are supposed to be going to the south.	1
Greenup RD	40217	NE (<60)	2022-07-14 14:56:00	2022-07-14 14:56:00	SDF	Noise At Wrong Time	Investigated	Non-Standard	Weather	Why are the bombing raids going on? It is past 2:00 p.m. They went on all last night. Here comes another one. They never stop.	1
Greenup RD	40217	NE (<60)	2022-07-14 17:40:00	2022-07-14 17:40:00	SDF	Noise At Wrong Time	Investigated	Non-Standard	Weather	Three hours later the UPS bombing raids are still going non-stop. Nothing to do with wind.	1

1. **Standard:** Indicates the "Most Preferred" runway configuration was being utilized at the time of the comment.
Non-Standard: Indicates that a "Lesser Preferred" runway configuration was being utilized at the time of the comment.
QHP: QuieterHome Program
2. This column is used to indicate the conditions which most likely necessitated a deviation from the standard procedures.
3. Comments may be edited for space, format, or unrelated content.

Comments (SDF/LOU)

July 2022

Street	Zip Code	CNF Quad / 2021 DNL	Time Received	Time	Airport	Disturbance Type	Status	Operation or Comment Type ¹	Deviation Type ²	Comments ³	Number of Contacts
W. Ormsby	40203	NW (60-65)	2022-07-14 22:49:00	2022-07-14 22:49:00	SDF	Noise At Wrong Time	Investigated	Non-Standard	Ops	There has probably been a half dozen planes over my house in the last few minutes. They are coming in from the north and heading to the south. I have an app that says the winds are out of the north at 2 mph. My understanding is that these guys are supposed to land these planes from the south unless the wind is too much. It seems to me that the policy has become that they are going to fly them from the north and wake everyone up night after night unless there is a howling wind from the north that prevents it. They are not following what the rules are. It is not just me; it is the Kentucky Shakespeare Festival and the University of Louisville and all the residents that have to put up with it.	1
York River RD	40214	SW (<60)	2022-07-16 05:54:00	2022-07-16 05:54:00	SDF	Aircraft Off Course	Investigated	Standard	None	Another bad week of being awoken early in the AM with takeoffs to the south off the west runway. I witnessed one that took off between 5:25-5:27 a.m. that was so bad it shook the windows in the house. I have been filing these complaints on the behalf of others in our Yorktown North HOA. They use sound machines to sleep as well as not being able to enjoy sitting outside in the evenings because of this noise issue. They are experiencing some of the same health issues as myself.	1

1. **Standard:** Indicates the “Most Preferred” runway configuration was being utilized at the time of the comment.
Non-Standard: Indicates that a “Lesser Preferred” runway configuration was being utilized at the time of the comment.
QHP: QuieterHome Program
2. This column is used to indicate the conditions which most likely necessitated a deviation from the standard procedures.
3. Comments may be edited for space, format, or unrelated content.

Comments (SDF/LOU)

July 2022

Street	Zip Code	CNF Quad / 2021 DNL	Time Received	Time	Airport	Disturbance Type	Status	Operation or Comment Type ¹	Deviation Type ²	Comments ³	Number of Contacts
W. Ormsby	40203	NW (60-65)	2022-07-17 23:12:00	2022-07-17 23:12:00	SDF	Noise At Wrong Time	Investigated	Standard	Ops	We have had about 3 planes in a row go over just now. My weather apps say the wind is from the southwest at between 3 and 7 knots. Another round of airplanes is making for a lot of nights in a row.	1
York River RD	40214	SW (<60)	2022-07-19 05:45:00	2022-07-19 05:45:00	SDF	Aircraft Off Course	Investigated	Standard	None	Awoken early in the AM with UPS jet takeoffs from west runway departing south and turning banking WSW at takeoff. It is these that are causing more noise to the area where I live. Why do some bank more than others and some takeoff parallel to runway and do not bank or turn which causes less noise. Actually, witnessed one jet takeoff around 5:30 a.m. from west runway - turn and bank to well west of Grade Lane then turn back east once it got down range probably over Sheperdsville.	1
W. Ormsby	40203	NW (60-65)	2022-07-19 23:20:00	2022-07-19 23:20:00	SDF	Noise At Wrong Time	Investigated	Non-Standard	Weather	We have airplanes again. I also went to the Shakespeare tonight and they had a bunch of planes go over the play. I think the airport is trying everyone's patience's a lot. I am looking at my weather app and I do not understand why these airplanes go over with so little breeze.	1

- Standard:** Indicates the "Most Preferred" runway configuration was being utilized at the time of the comment.
Non-Standard: Indicates that a "Lesser Preferred" runway configuration was being utilized at the time of the comment.
QHP: QuieterHome Program
- This column is used to indicate the conditions which most likely necessitated a deviation from the standard procedures.
- Comments may be edited for space, format, or unrelated content.

Comments (SDF/LOU)

July 2022

Street	Zip Code	CNF Quad / 2021 DNL	Time Received	Time	Airport	Disturbance Type	Status	Operation or Comment Type ¹	Deviation Type ²	Comments ³	Number of Contacts
York River RD	40214	SW (<60)	2022-07-21 07:23:00	2022-07-21 03:30:00	SDF	Aircraft Off Course	Investigated	Standard	None	UPS departing south on the west runway. Turning/banking WSW causing noise levels above 70 dBs in my house. This is happening daily. It starts at 3:30 a.m. It wakes me up every day that UPS does this. In the morning and for every 2 minutes thereafter. Not every flight. The UPS flight that departed on the west runway south this morning around 5:35 did not bank/turn per the flight tracker. It took off and stayed low over the dump and industrial park before banking/turning. I could not even hear this takeoff. Why can't all do the same. It is bad in the afternoons between 4 and 7 p.m. as well. Same issue. Why not just takeoff north? Also noticed trying to gain altitude and turn/bank at takeoff. UPS are much louder when they do this. Could this type of takeoff be causing louder noise as well? Jeff Donahue said that they were doing this. This could explain the louder noise. Engines need to be at more power to do this. If so, has a noise study been done?	1
Greenup RD	40217	NE (<60)	2022-07-21 17:46:00	2022-07-21 17:46:00	SDF	Noise At Wrong Time	Investigated	Non-Standard	Weather	It is quarter till 6, why are the UPS bombing raids going to the north? There is no wind. (Representative of 1 additional comment received within the hour.)	2

- Standard:** Indicates the "Most Preferred" runway configuration was being utilized at the time of the comment.
Non-Standard: Indicates that a "Lesser Preferred" runway configuration was being utilized at the time of the comment.
QHP: QuieterHome Program
- This column is used to indicate the conditions which most likely necessitated a deviation from the standard procedures.
- Comments may be edited for space, format, or unrelated content.

Comments (SDF/LOU)

July 2022

Street	Zip Code	CNF Quad / 2021 DNL	Time Received	Time	Airport	Disturbance Type	Status	Operation or Comment Type ¹	Deviation Type ²	Comments ³	Number of Contacts
Greenup RD	40217	NE (<60)	2022-07-25 16:09:00	2022-07-25 16:09:00	SDF	Noise At Wrong Time	Investigated	Non-Standard	Weather	Why are the bombing raids headed north? There is not a bit of wind. (Representative of 4 additional comments received within the hour.)	5
Greenup RD	40217	NE (<60)	2022-07-25 18:05:00	2022-07-25 18:05:00	SDF	Over Use of Runway	Investigated	Non-Standard	Weather	The UPS bombing raids are still going on more than 3 1/2 hours later. Why are they still going to the north? Why aren't they going to the south? Why aren't the regulations being enforced? (Representative of 5 additional comments received within the hour.)	6
Greenup RD	40217	NE (<60)	2022-07-25 19:04:00	2022-07-25 19:04:00	SDF	Over Use of Runway	Investigated	Non-Standard	None	More than 4 hours the bombing raids are still going. (Representative of 1 additional comment received within the hour.)	2
Kings Hwy	40205	N/A	2022-07-26 17:18:00	2022-07-25 22:00:00	LOU	Noise At Wrong Time	Investigated	Non-Standard	Ops	I am reporting to you that on Monday, July 25, 2022, there was a plane flying over our home after 10:00 p.m. If planes are not supposed to fly past 10:00 p.m. why does the tower allow them to take off? Here is the information on the plane that was up flying last night. 1) Private owner, N502RK, Cessna 150L, departed at 10:00 and landed at 11:31. The same plane then took off at 12:08 a.m. (7/26/2022) and flew for 30 minutes landing at 12:34 a.m. I am not sure why planes are flying past 10:00 p.m. over a residential area. I appreciate your assistance with this matter.	1

- Standard:** Indicates the "Most Preferred" runway configuration was being utilized at the time of the comment.
Non-Standard: Indicates that a "Lesser Preferred" runway configuration was being utilized at the time of the comment.
QHP: QuieterHome Program
- This column is used to indicate the conditions which most likely necessitated a deviation from the standard procedures.
- Comments may be edited for space, format, or unrelated content.

Comments (SDF/LOU)

July 2022

Street	Zip Code	CNF Quad / 2021 DNL	Time Received	Time	Airport	Disturbance Type	Status	Operation or Comment Type ¹	Deviation Type ²	Comments ³	Number of Contacts
Montrose AV	40205	N/A	2022-07-28 09:15:00	2022-07-25 22:00:00	LOU	Noise At Wrong Time	Investigated	Non-Standard	Ops	Have you determined who was flying after hours? Which direction was the wind on 7/25 that prevented them from using either the runway over the expressway or towards Big Springs or the Park towards St. Matthews?	1
York River RD	40214	SW (<60)	2022-07-26 05:58:00	2022-07-26 04:00:00	SDF	Aircraft Off Course	Investigated	Standard	None	The usual EVERY-DAY / EVERY-TIME. Early morning it starts at 4:00 a.m., takeoffs from west runway departing south. The flight that leaves between 5:25-5:30 a.m. needs his RAD certified based upon the excuse given to me from yesterday's meeting.	1
Greenup RD	40217	NE (<60)	2022-07-26 12:47:00	2022-07-26 12:47:00	SDF	Over Use of Runway	Investigated	Standard	None	Why are the non-stop UPS bombing raids going to the north and why aren't you doing your job?	1
Greenup RD	40217	NE (<60)	2022-07-26 16:03:00	2022-07-26 16:03:00	SDF	Over Use of Runway	Investigated	Non-Standard	Weather	It is 4:00 p.m. and the UPS bombing raids are still going on. Why are the UPS bombing raids still going on 6 hours later? Still flying to the north when they are supposed to be going to the south. When are you going to do your job instead of just talking dopy sh**?* (Representative of 36 additional comments received within the hour.)	37
Greenup RD	40217	NE (<60)	2022-07-26 17:04:00	2022-07-26 17:04:00	SDF	Over Use of Runway	Investigated	Non-Standard	Weather	It is after 5:00 p.m. they are still going. (Representative of 11 additional comments received within the hour.)	12

- Standard:** Indicates the "Most Preferred" runway configuration was being utilized at the time of the comment.
Non-Standard: Indicates that a "Lesser Preferred" runway configuration was being utilized at the time of the comment.
QHP: QuieterHome Program
- This column is used to indicate the conditions which most likely necessitated a deviation from the standard procedures.
- Comments may be edited for space, format, or unrelated content.

Comments (SDF/LOU)

July 2022

Street	Zip Code	CNF Quad / 2021 DNL	Time Received	Time	Airport	Disturbance Type	Status	Operation or Comment Type ¹	Deviation Type ²	Comments ³	Number of Contacts
Greenup RD	40217	NE (<60)	2022-07-26 18:59:00	2022-07-26 18:59:00	SDF	Over Use of Runway	Investigated	Standard	None	It is 7:00 p.m. and the bombing raids are still going. It started at 10:00 a.m. and still going. What is that; about 1,000 planes? Think about that, imagine having to sit here and listen to that non-stop BS for hours. You should get out and have to experience what everyone in the neighborhood has to put up with.	1
Greenup RD	40217	NE (<60)	2022-07-26 22:58:00	2022-07-26 22:58:00	SDF	Over Use of Runway	Investigated	Non-Standard	None	The bombing raids have gone non-stop today for 8 hours.	1
W. Ormsby	40203	NW (60-65)	2022-07-26 23:10:00	2022-07-26 23:10:00	SDF	Noise At Wrong Time	Investigated	Non-Standard	Ops	I am calling to make a complaint about the airplane noise. We have not had airplanes too much in the past few days. However, tonight those things are going over tail to tip. My weather app says there is a 1 mph wind from the west. Why are the planes coming in from the north? If they have to come in from the north that's one thing, but I don't think they have to come in from the north tonight.	1
Greenup RD	40217	NE (<60)	2022-07-26 23:15:00	2022-07-26 23:15:00	SDF	Over Use of Runway	Investigated	Non-Standard	Ops	Why are the UPS bombing raids going on? We only got a 2 hour break today. (Representative of 14 additional comments received within the hour.)	15
Greenup RD	40217	NE (<60)	2022-07-27 00:01:00	2022-07-27 00:01:00	SDF	Over Use of Runway	Investigated	Non-Standard	Ops	There is another one non-stop, another one! Non-stop UPS bombing raids. (Representative of 12 additional comments received within the hour.)	13

- Standard:** Indicates the "Most Preferred" runway configuration was being utilized at the time of the comment.
Non-Standard: Indicates that a "Lesser Preferred" runway configuration was being utilized at the time of the comment.
QHP: QuieterHome Program
- This column is used to indicate the conditions which most likely necessitated a deviation from the standard procedures.
- Comments may be edited for space, format, or unrelated content.

Comments (SDF/LOU)

July 2022

Street	Zip Code	CNF Quad / 2021 DNL	Time Received	Time	Airport	Disturbance Type	Status	Operation or Comment Type ¹	Deviation Type ²	Comments ³	Number of Contacts
Greenup RD	40217	NE (<60)	2022-07-27 01:01:00	2022-07-27 01:01:00	SDF	Over Use of Runway	Investigated	Non-Standard	Ops	They are still going! They are still going! Non-stop for 3 hours. (Representative of 6 additional comments received within the hour.)	7
Greenup RD	40217	NE (<60)	2022-07-27 08:15:00	2022-07-27 08:15:00	SDF	Over Use of Runway	Investigated	Standard	None	Why are the bombing raids going on? They went on all day long yesterday and all night long. A mere 2-hour break. Give people a break and do your job. Silence UPS and make them fly to the south. (Representative of 4 additional comments received within the hour.)	5
Greenup RD	40217	NE (<60)	2022-07-27 10:32:00	2022-07-27 10:32:00	SDF	Over Use of Runway	Investigated	Standard	None	They are still going. Why?	1
Greenup RD	40217	NE (<60)	2022-07-27 17:16:00	2022-07-27 17:16:00	SDF	Over Use of Runway	Investigated	Non-Standard	Weather	Why are the bombing raids going on? At least 10 have flown over in the past 30 seconds. (Representative of 6 additional comments received within the hour.)	7
Greenup RD	40217	NE (<60)	2022-07-27 20:05:00	2022-07-27 20:05:00	SDF	Too Much Noise	Investigated	Non-Standard	Weather	It is 8:00 p.m. Why are the UPS bombing raids still going on? You cannot hear anything. I am walking in Audubon Park trying to relax, talking to someone on the phone and I could not hear a word they were saying. She literally asked if I was in a war zone. That is why they are called the bombing raids. This is not acceptable. You need to get over here and listen to this non-stop torture.	2

- Standard:** Indicates the “Most Preferred” runway configuration was being utilized at the time of the comment.
Non-Standard: Indicates that a “Lesser Preferred” runway configuration was being utilized at the time of the comment.
QHP: QuieterHome Program
- This column is used to indicate the conditions which most likely necessitated a deviation from the standard procedures.
- Comments may be edited for space, format, or unrelated content.

Comments (SDF/LOU)

July 2022

Street	Zip Code	CNF Quad / 2021 DNL	Time Received	Time	Airport	Disturbance Type	Status	Operation or Comment Type ¹	Deviation Type ²	Comments ³	Number of Contacts
Greenup RD	40217	NE (<60)	2022-07-27 22:54:00	2022-07-27 22:54:00	SDF	Over Use of Runway	Investigated	Non-Standard	None	The UPS bombing raids are going. We have already had 3 days of non-stop UPS bombing raids. Why are they still flying to the north. Don't give me that crap about the weather, people need to sleep. (Representative of 3 additional comments received within the hour.)	4
Greenup RD	40217	NE (<60)	2022-07-27 23:03:00	2022-07-27 23:03:00	SDF	Over Use of Runway	Investigated	Non-Standard	None	Here is another one. Another one. Another one....	1
Greenup RD	40217	NE (<60)	2022-07-28 22:55:00	2022-07-28 22:55:00	SDF	Over Use of Runway	Investigated	Non-Standard	Weather	The bombing raids have started. This is the 4th night in a row. Why?	1
W. Ormsby	40203	NW (60-65)	2022-07-28 23:21:00	2022-07-28 23:21:00	SDF	Noise At Wrong Time	Investigated	Non-Standard	Weather	It is 11:30 p.m. and you can probably hear that plane going overhead. However, I can actually feel a little breeze out of the south. That is 13 nights of airplanes so far in July.	1
Greenup RD	40217	NE (<60)	2022-07-29 16:05:00	2022-07-29 16:05:00	SDF	Over Use of Runway	Investigated	Non-Standard	Weather	Why are the UPS bombing raids flying north when they should be going south? We have already 5 nights in a row. There is no reason for this. It is not wind because they fly in and out of tornados. (Representative of 3 additional comments received within the hour.)	4

1. **Standard:** Indicates the "Most Preferred" runway configuration was being utilized at the time of the comment.
Non-Standard: Indicates that a "Lesser Preferred" runway configuration was being utilized at the time of the comment.
QHP: QuieterHome Program
2. This column is used to indicate the conditions which most likely necessitated a deviation from the standard procedures.
3. Comments may be edited for space, format, or unrelated content.

Comments (SDF/LOU)

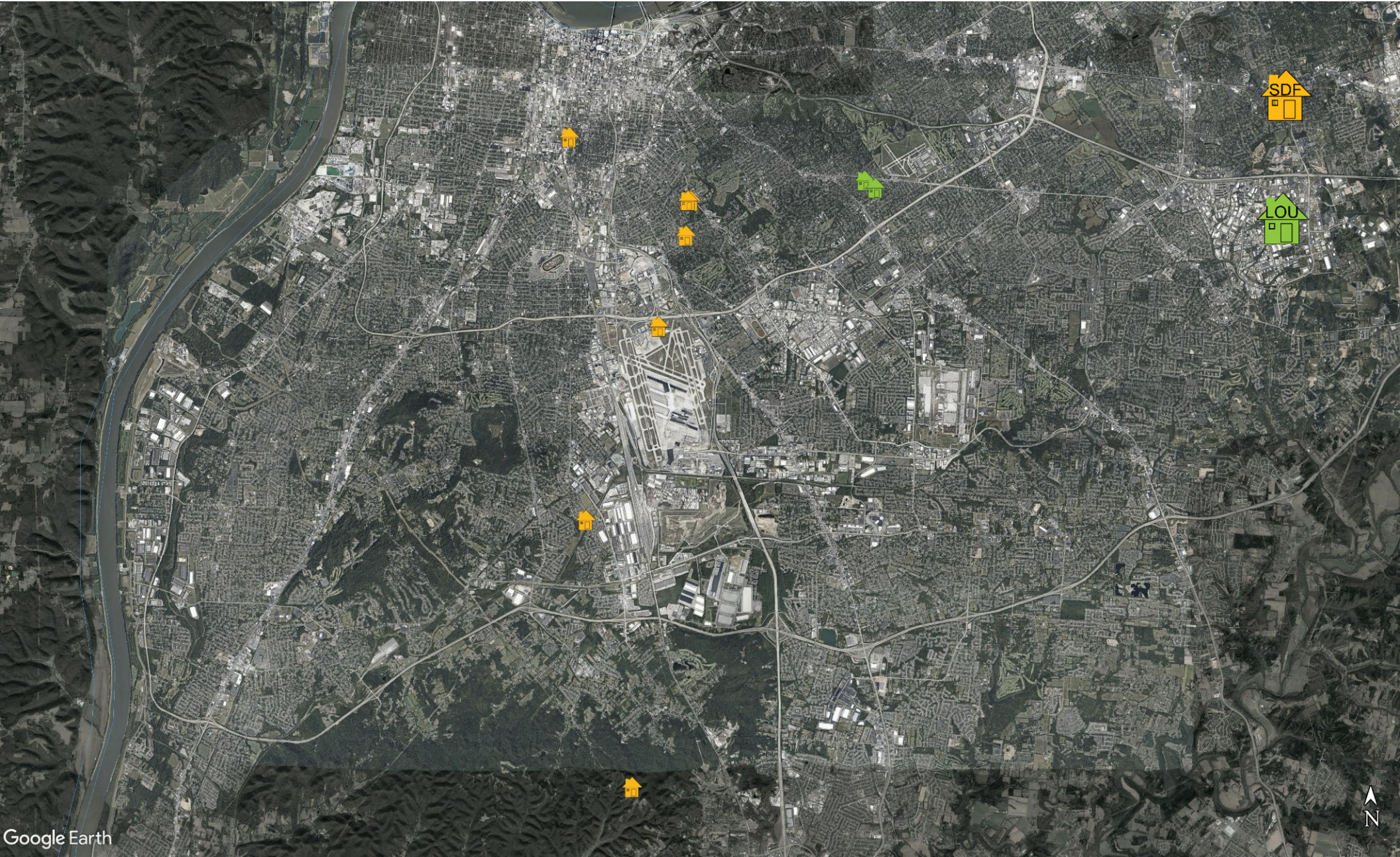
July 2022

Street	Zip Code	CNF Quad / 2021 DNL	Time Received	Time	Airport	Disturbance Type	Status	Operation or Comment Type ¹	Deviation Type ²	Comments ³	Number of Contacts
Greenup RD	40217	NE (<60)	2022-07-29 20:26:00	2022-07-29 20:26:00	SDF	Constant Noise	Investigated	Non-Standard	Weather	It is almost 8:30 p.m. and the UPS bombing raids are still going on. 5 straight nights. It is a nice evening, and I would like to sit here in the park and enjoy it, but it is interrupted by UPS bombing raids. Give it a break.	1
									Received	LRAA	182

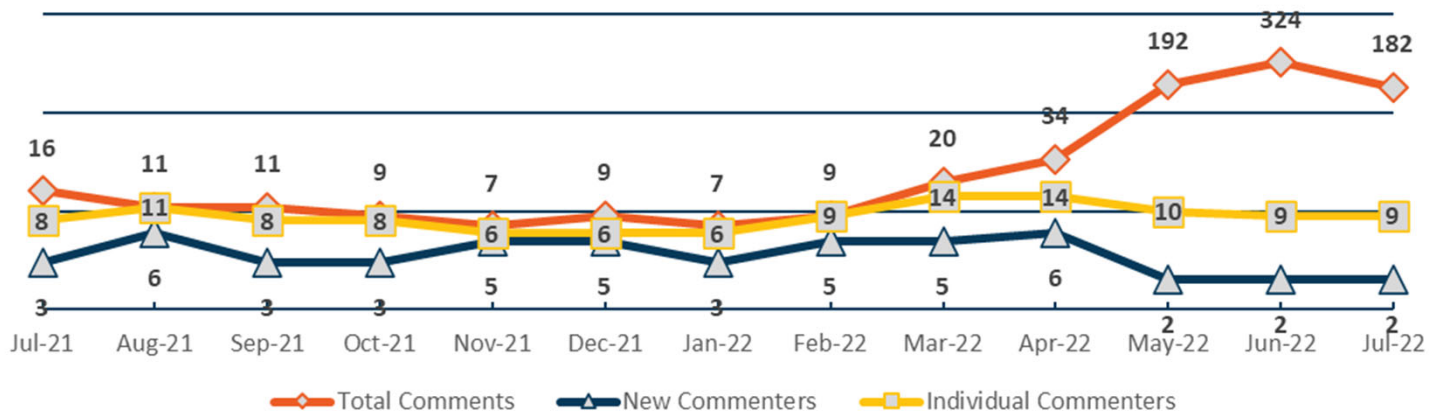
1. **Standard:** Indicates the “Most Preferred” runway configuration was being utilized at the time of the comment.
Non-Standard: Indicates that a “Lesser Preferred” runway configuration was being utilized at the time of the comment.
QHP: QuieterHome Program
2. This column is used to indicate the conditions which most likely necessitated a deviation from the standard procedures.
3. Comments may be edited for space, format, or unrelated content.

Comment Location (SDF/LOU)

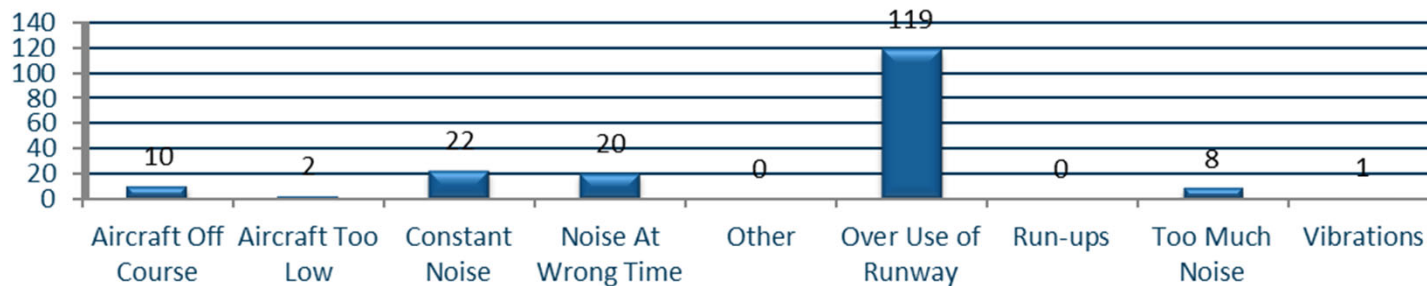
July 2022



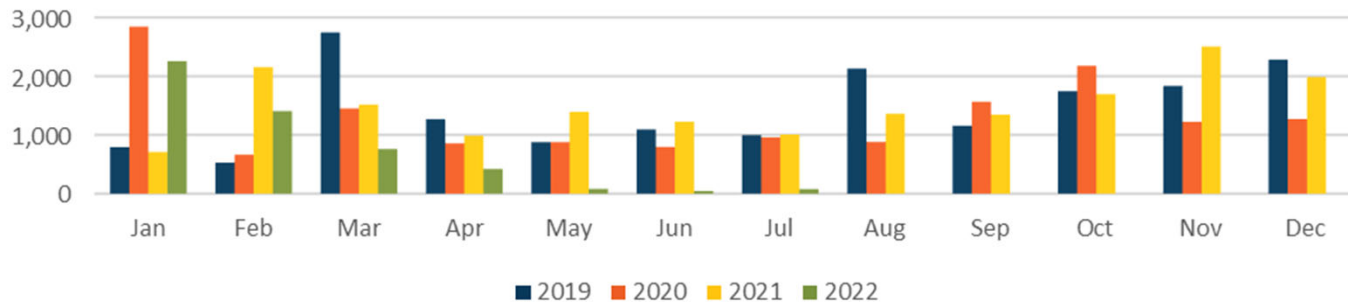
Total, New, and Individual Comments (SDF/LOU)



Comment Type (SDF and LOU) July 2022



Operations Per Complaint (SDF)





NOISE COMMENT REPORT

LOUISVILLE

REGIONAL AIRPORT AUTHORITY



August 2022

Comments (SDF/LOU)

August 2022

Street	Zip Code	CNF Quad / 2021 DNL	Time Received	Time	Airport	Disturbance Type	Status	Operation or Comment Type ¹	Deviation Type ²	Comments ³	Number of Contacts
Sylvia St	40217	NE (60-65)	2022-08-01 15:30:00	2022-08-01 15:30:00	SDF	Other	Investigated	Standard	None	I would like to know if this address is in the boundary for the QuieterHome Program.	1
Greenup RD	40217	NE (<60)	2022-08-01 23:54:00	2022-08-01 23:54:00	SDF	Constant Noise	Investigated	Non-Standard	Weather	The bombing raids have been going non-stop for 2 hours. Why are they flying from the north? (Representative of 1 additional comment received within the hour.)	2
Greenup RD	40217	NE (<60)	2022-08-02 01:01:00	2022-08-02 01:01:00	SDF	Constant Noise	Investigated	Non-Standard	Weather	3 hours later and the UPS bombing raids are still going. Why are they flying in from the north?	1
Greenup RD	40217	NE (<60)	2022-08-04 09:21:00	2022-08-04 09:21:00	SDF	Constant Noise	Investigated	Non-Standard	Weather	Why are the UPS bombing raids going? They started at least an hour ago. They have been going all night long. Maybe to the south, but all night long. Give it a rest. (Representative of 6 additional comments received within the hour.)	7
Greenup RD	40217	NE (<60)	2022-08-04 10:02:00	2022-08-04 10:02:00	SDF	Over Use of Runway	Investigated	Non-Standard	Weather	They are still going non-stop. 10 seconds apart. Why are they going now? (Representative of 6 additional comments received within the hour.)	7
Greenup RD	40217	NE (<60)	2022-08-04 11:16:00	2022-08-04 11:16:00	SDF	Constant Noise	Investigated	Non-Standard	Weather	It is almost 3 hours later, and UPS is still going. (Representative of 4 additional comments received within the hour.)	5
Greenup RD	40217	NE (<60)	2022-08-04 12:38:00	2022-08-04 12:38:00	SDF	Constant Noise	Investigated	Non-Standard	Weather	More than 4 hours later the UPS bombing raids are still going. You see nothing wrong with this? You don't think this is a problem? (Representative of 3 additional comments received within the hour.)	4

- Standard:** Indicates the "Most Preferred" runway configuration was being utilized at the time of the comment.
Non-Standard: Indicates that a "Lesser Preferred" runway configuration was being utilized at the time of the comment.
QHP: QuieterHome Program
- This column is used to indicate the conditions which most likely necessitated a deviation from the standard procedures.
- Comments may be edited for space, format, or unrelated content.

Comments (SDF/LOU)

August 2022

Street	Zip Code	CNF Quad / 2021 DNL	Time Received	Time	Airport	Disturbance Type	Status	Operation or Comment Type ¹	Deviation Type ²	Comments ³	Number of Contacts
Greenup RD	40217	NE (<60)	2022-08-04 13:03:00	2022-08-04 13:03:00	SDF	Over Use of Runway	Investigated	Non-Standard	Weather	Get on the phone to the control tower and tell them to send them in a different direction. This is totally unacceptable. The public has to put up with this non-stop BS. (Representative of 5 additional comments received within the hour.)	6
Greenup RD	40217	NE (<60)	2022-08-04 14:16:00	2022-08-04 14:16:00	SDF	Constant Noise	Investigated	Standard	None	Seriously, almost 6 hours later and they are still going.	1
Greenup RD	40217	NE (<60)	2022-08-04 16:14:00	2022-08-04 16:14:00	SDF	Constant Noise	Investigated	Non-Standard	Weather	They are still going. It is more than 8 hours later, and they are still going. Did you call the tower? Did you ask them what is going on? Did you tell them to redirect them? (Representative of 9 additional comments received within the hour.)	10
Greenup RD	40217	NE (<60)	2022-08-04 17:21:00	2022-08-04 17:21:00	SDF	Constant Noise	Investigated	Non-Standard	Weather	The bombing raids are still going non-stop. 10 hours non-stop.	1
Ardmore Dr	40217	NE (<60)	2022-08-10 18:11:00	2022-08-10 17:00:00	SDF	Constant Noise	Investigated	Non-Standard	Weather	From 5:00 p.m. until 6:30 so far, all my windows and doors are closed, and I cannot hear my TV. Just wanted to let you know that this is an ongoing problem.	1
Harrison Ave	40217	NE ((60-65)	2022-08-11 15:55:00	2022-08-11 15:55:00	SDF	Constant Noise	Investigated	Non-Standard	Weather	I have jets flying over my house and I can almost see the pilot. I don't know why this area is not included in the airport sound program.	1

1. **Standard:** Indicates the "Most Preferred" runway configuration was being utilized at the time of the comment.
Non-Standard: Indicates that a "Lesser Preferred" runway configuration was being utilized at the time of the comment.
QHP: QuieterHome Program
2. This column is used to indicate the conditions which most likely necessitated a deviation from the standard procedures.
3. Comments may be edited for space, format, or unrelated content.

Comments (SDF/LOU)

August 2022

Street	Zip Code	CNF Quad / 2021 DNL	Time Received	Time	Airport	Disturbance Type	Status	Operation or Comment Type ¹	Deviation Type ²	Comments ³	Number of Contacts
Southern Pkwy	40214	SW (<60)	2022-08-12 04:59:00	2022-08-12 04:00:00	SDF	Constant Noise	Investigated	Non-Standard	Weather	I've been listening to constant flyover noise since at least 4:00 a.m. Weather conditions appear clear. Can you please share what accounts for the noise?	1
Carlota Dr	47130	SI (<60)	2022-08-15 17:01:00	2022-08-15 17:01:00	SDF	Noise At Wrong Time	Investigated	Non-Standard	Weather	I am calling to complain about the unusually loud noise coming from the low flying passenger aircraft today. It is 5:00 p.m. now and it has been going on for the last 45 minutes or so. I usually track the flights and email you, but we have not had a problem like this in a long time. This is louder than the motorcycles. They just need to go up 65 before they turn east because they are just turning too soon it looks like. They go right over the top of this neighborhood here.	1
Greenup RD	40217	NE (<60)	2022-08-15 17:12:00	2022-08-15 17:12:00	SDF	Over Use of Runway	Investigated	Non-Standard	Weather	Why are the UPS bombing raids going on? It is past 5:00 p.m. and they are flying to the north. Have you asked the tower? Do that will you because that is your job.	1
Greenup RD	40217	NE (<60)	2022-08-15 19:22:00	2022-08-15 19:22:00	SDF	Over Use of Runway	Investigated	Non-Standard	Weather	Three hours later and the bombing raids are still going to the north.	1
Greenup RD	40217	NE (<60)	2022-08-16 09:12:00	2022-08-16 09:12:00	SDF	Over Use of Runway	Investigated	Standard	None	Why are the UPS bombing raids going already. Why are they flying to the north when the pathway is to the south. There's no wind. It is all bulls**t, do your job.	1

1. **Standard:** Indicates the "Most Preferred" runway configuration was being utilized at the time of the comment.
Non-Standard: Indicates that a "Lesser Preferred" runway configuration was being utilized at the time of the comment.
QHP: QuieterHome Program
2. This column is used to indicate the conditions which most likely necessitated a deviation from the standard procedures.
3. Comments may be edited for space, format, or unrelated content.

Comments (SDF/LOU)

August 2022

Street	Zip Code	CNF Quad / 2021 DNL	Time Received	Time	Airport	Disturbance Type	Status	Operation or Comment Type ¹	Deviation Type ²	Comments ³	Number of Contacts
Greenup RD	40217	NE (<60)	2022-08-16 16:26:00	2022-08-16 16:26:00	SDF	Too Much Noise	Investigated	Non-Standard	Weather	Why are the bombing raids still going on? (Representative of 8 additional comments received within the hour.)	9
Greenup RD	40217	NE (<60)	2022-08-16 17:04:00	2022-08-16 17:04:00	SDF	Too Much Noise	Investigated	Non-Standard	None	The bombing raids are still going. This is unbearable, do something about it. (Representative of 4 additional comments received within the hour.)	5
Greenup RD	40217	NE (<60)	2022-08-16 18:38:00	2022-08-16 18:38:00	SDF	Constant Noise	Investigated	Non-Standard	None	It is 6:40 p.m. and the UPS bombing raids are still going. Enough, fix it.	1
Greenup RD	40217	NE (<60)	2022-08-17 20:00:00	2022-08-17 20:00:00	SDF	Constant Noise	Investigated	Non-Standard	Weather	The UPS bombing raids are still going and they have been going on for 5 hours. Are you ever going to do anything?	1
Greenup RD	40217	NE (<60)	2022-08-18 14:48:00	2022-08-18 14:48:00	SDF	Too Much Noise	Investigated	Non-Standard	Weather	Why are the bombing raids going on. It is almost 3:00 p.m. Do your job. (Representative of 3 additional comments received within the hour.)	4
Greenup RD	40217	NE (<60)	2022-08-18 15:09:00	2022-08-18 15:09:00	SDF	Noise At Wrong Time	Investigated	Non-Standard	Weather	The bombing raids are still going. It is past 3:00 p.m. they are supposed to be going to the south. Fix it, do your job. (Representative of 13 additional comments received within the hour.)	14
Greenup RD	40217	NE (<60)	2022-08-18 16:06:00	2022-08-18 16:06:00	SDF	Noise At Wrong Time	Investigated	Non-Standard	None	They are still coming. It is after 4:00 p.m. and they are still going. (Representative of 6 additional comments received within the hour.)	7

1. **Standard:** Indicates the “Most Preferred” runway configuration was being utilized at the time of the comment.
Non-Standard: Indicates that a “Lesser Preferred” runway configuration was being utilized at the time of the comment.
QHP: QuieterHome Program
2. This column is used to indicate the conditions which most likely necessitated a deviation from the standard procedures.
3. Comments may be edited for space, format, or unrelated content.

Comments (SDF/LOU)

August 2022

Street	Zip Code	CNF Quad / 2021 DNL	Time Received	Time	Airport	Disturbance Type	Status	Operation or Comment Type ¹	Deviation Type ²	Comments ³	Number of Contacts
Greenup RD	40217	NE (<60)	2022-08-18 17:03:00	2022-08-18 17:03:00	SDF	Noise At Wrong Time	Investigated	Non-Standard	None	It is after 5:00 p.m. and the bombing raids are still going. Do something about it. (Representative of 11 additional comments received within the hour.)	12
Greenup RD	40217	NE (<60)	2022-08-18 18:03:00	2022-08-18 18:03:00	SDF	Noise At Wrong Time	Investigated	Non-Standard	None	It is after 6:00 p.m. and this hideous noise is still going non-stop. It is all UPS. Fix it, that is your job. It is not letting UPS do whatever they want. (Representative of 1 additional comment received within the hour.)	2
York River RD	40214	SW (<60)	2022-08-19 04:56:00	2022-08-19 04:56:00	SDF	Too Much Noise	Investigated	Standard	None	Woke up this morning with planes flying every 2 minutes. Excessive noise of over 70 decibels on the meter in my bedroom.	1
York River RD	40214	SW (<60)	2022-08-20 05:20:00	2022-08-20 03:30:00	SDF	Noise At Wrong Time	Investigated	Standard	None	I was awoken this morning at 3:30 a.m. and could not get back to sleep. I could not go back to sleep because it has been every 2 minutes since.	1
Holsclaw Hill Rd	40109	SW (60-65)	2022-08-23 10:24:00	2022-08-23 10:24:00	SDF	Other	Investigated	Standard	None	I heard there was some more tax money for sound insulation and was checking to see if you have expanded that area. I had 65 dB inside the house multiple times in the mornings and several planes under 2000'.	1
York River RD	40214	SW (<60)	2022-08-24 03:24:00	2022-08-24 03:24:00	SDF	Noise At Wrong Time	Investigated	Standard	None	Awoken early this morning with departures. (Representative of 2 additional comments received within the hour.)	3
York River RD	40214	SW (<60)	2022-08-24 04:01:00	2022-08-24 04:01:00	SDF	Noise At Wrong Time	Investigated	Standard	None	Another departure interrupting my sleep again. (Representative of 1 additional comment received within the hour.)	2

1. **Standard:** Indicates the “Most Preferred” runway configuration was being utilized at the time of the comment.
Non-Standard: Indicates that a “Lesser Preferred” runway configuration was being utilized at the time of the comment.
QHP: QuieterHome Program
2. This column is used to indicate the conditions which most likely necessitated a deviation from the standard procedures.
3. Comments may be edited for space, format, or unrelated content.

Comments (SDF/LOU)

August 2022

Street	Zip Code	CNF Quad / 2021 DNL	Time Received	Time	Airport	Disturbance Type	Status	Operation or Comment Type ¹	Deviation Type ²	Comments ³	Number of Contacts
E Wellington Ave	40214	SW (60-65)	2022-08-24 14:45:00	2022-08-24 14:45:00	SDF	Too Much Noise	Investigated	Standard	None	I have lived here for 30 years. It seems like the noise is getting worse. I heard that this area may be eligible for some help with new windows to help reduce the noise.	1
Greenup RD	40217	NE (<60)	2022-08-24 20:08:00	2022-08-24 20:08:00	SDF	Over Use of Runway	Investigated	Standard	None	I am sitting here in Wren Park trying to enjoy the sounds of nature and it is all being destroyed by the UPS bombing raids. Why are they coming in from the north? Their pathway is to the south.	1
York River RD	40214	SW (<60)	2022-08-25 04:42:00	2022-08-25 04:42:00	SDF	Noise At Wrong Time	Investigated	Standard	None	Loud departures again this morning. It wakes me up and I cannot go back to sleep because they come every 2 minutes.	1
Greenup RD	40217	NE (<60)	2022-08-25 14:55:00	2022-08-25 14:55:00	SDF	Constant Noise	Investigated	Non-Standard	Weather	Why have the UPS bombing raids been flying non-stop to the north for the last several hours? Why don't you do your job to fix this. (Representative of 2 additional comments received within the hour.)	3
York River RD	40214	SW (<60)	2022-08-25 16:42:00	2022-08-25 16:42:00	SDF	Aircraft Off Course	Investigated	Standard	None	I am having issues over here in the afternoons as well as early morning. It is the same thing in the afternoons. It is going on right now. You can hardly stand outside. The aircraft are going almost straight up. I heard that things were changed to get them as high as they can as quick as they can, and they turn as soon as they takeoff. That puts them closer to me. I need to find out what is going on.	1

1. **Standard:** Indicates the "Most Preferred" runway configuration was being utilized at the time of the comment.
Non-Standard: Indicates that a "Lesser Preferred" runway configuration was being utilized at the time of the comment.
QHP: QuieterHome Program
2. This column is used to indicate the conditions which most likely necessitated a deviation from the standard procedures.
3. Comments may be edited for space, format, or unrelated content.

Comments (SDF/LOU)

August 2022

Street	Zip Code	CNF Quad / 2021 DNL	Time Received	Time	Airport	Disturbance Type	Status	Operation or Comment Type ¹	Deviation Type ²	Comments ³	Number of Contacts
York River RD	40214	SW (<60)	2022-08-27 04:54:00	2022-08-27 04:54:00	SDF	Noise At Wrong Time	Investigated	Standard	None	I was awakened early this morning again by takeoff noise from the UPS jets.	1
York River RD	40214	SW (<60)	2022-08-27 05:17:00	2022-08-27 05:17:00	SDF	Too Much Noise	Investigated	Standard	None	It is one right after the other every 2 minutes. It seems like the more I complain the worse it gets. UPS takeoffs on the west runway. (Representative of 1 additional comment received within the hour.)	2
York River RD	40214	SW (<60)	2022-08-29 15:27:00	2022-08-29 15:27:00	SDF	Vibrations	Investigated	Standard	None	Have had several UPS take offs from west runway fly over top of my house shaking and rattling windows at 3:30 p.m.	1
York River Rd	40214	SW (<60)	2022-08-30 08:30:00	2022-08-30 03:30:00	SDF	Aircraft Off Course	Investigated	Standard	Weather	Why are the airplanes flying over my house at 3:30 in the morning? Seems like they have been doing that quite a bit lately. Why can't they just takeoff to the north?	1
York River Rd	40214	SW (<60)	2022-08-30 11:20:00	2022-08-30 03:57:00	SDF	Too Much Noise	Investigated	Standard	Weather	Several planes flew directly over my house this morning. It is very annoying, and it was causing my windows to rattle. They were just above the treetops, and they would make a hard right turn. This happened several weeks ago also.	1
York River RD	40214	SW (<60)	2022-08-30 04:01:00	2022-08-30 04:01:00	SDF	Aircraft Off Course	Investigated	Non-Standard	Weather	It has been noisy again this morning. One just flew right over the house. It has got to stop. (Representative of 1 additional comment received within the hour.)	2
York River RD	40214	SW (<60)	2022-08-30 05:01:00	2022-08-30 05:01:00	SDF	Vibrations	Complaint	Non-Standard	Weather	We just had another plane going over the house rattle the windows and shake the bed. It is ridiculous and has got to stop.	1

1. **Standard:** Indicates the "Most Preferred" runway configuration was being utilized at the time of the comment.
Non-Standard: Indicates that a "Lesser Preferred" runway configuration was being utilized at the time of the comment.
QHP: QuieterHome Program
2. This column is used to indicate the conditions which most likely necessitated a deviation from the standard procedures.
3. Comments may be edited for space, format, or unrelated content.

Comments (SDF/LOU)

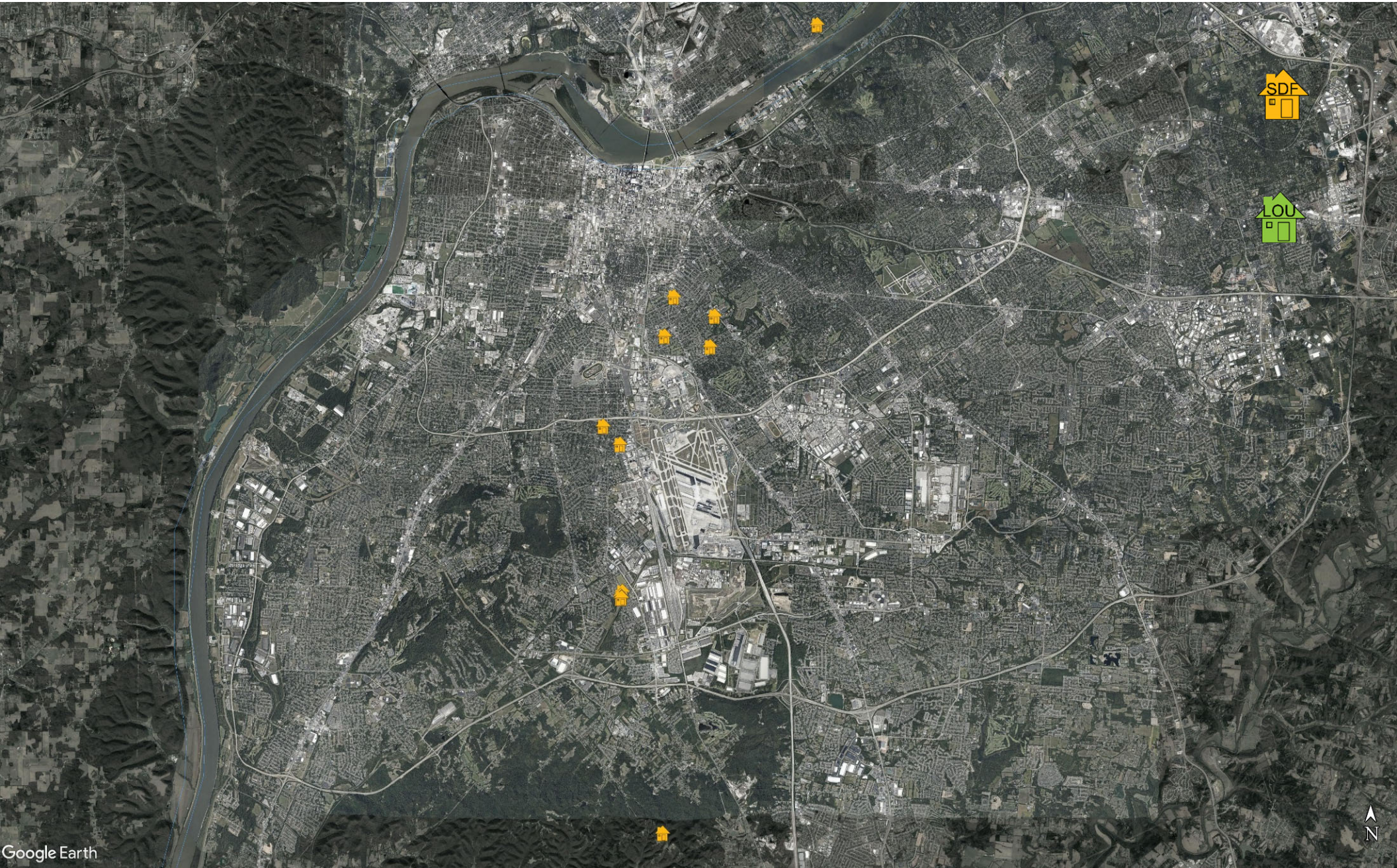
August 2022

Street	Zip Code	CNF Quad / 2021 DNL	Time Received	Time	Airport	Disturbance Type	Status	Operation or Comment Type ¹	Deviation Type ²	Comments ³	Number of Contacts
Greenup RD	40217	NE (<60)	2022-08-30 17:26:00	2022-08-30 17:26:00	SDF	Over Use of Runway	Investigated	Non-Standard	Weather	Why are the bombing raids headed north? Why were they headed north last night. Why?	1
York River RD	40214	SW (<60)	2022-08-31 05:39:00	2022-08-31 05:39:00	SDF	Aircraft Off Course	Investigated	Standard	None	Again, woke up at 4:00 a.m. this morning by UPS planes taking off. I did notice that some departed and stayed low and did not turn. If we could get them all to do that, we would not have any problems.	1
York River Rd	40214	SW (<60)	2022-08-31 15:34:00	2022-08-31 15:34:00	SDF	Too Much Noise	Investigated	Non-Standard	Weather	We are getting noise every night from airplanes going over the house. It is very hard to sleep and it is getting ridiculous.	1
Greenup RD	40217	NE (<60)	2022-08-04 15:48:00	2022-08-31 15:48:00	SDF	Constant Noise	Investigated	Non-Standard	Weather	It is 8 hours later and the UPS bombing raids are still going. 8 hours later. (Representative of 1 additional comment received within the hour.)	2
Greenup RD	40217	NE (<60)	2022-08-31 16:28:00	2022-08-31 16:28:00	SDF	Over Use of Runway	Investigated	Non-Standard	Weather	Why are the UPS bombing raids going to the north? Their pathway is to the south. Make sure that is done because that is your job. (Representative of 1 additional comment received within the hour.)	2
Greenup RD	40217	NE (<60)	2022-08-31 19:51:00	2022-08-31 19:51:00	SDF	Constant Noise	Investigated	Non-Standard	Weather	It is almost 8:00 p.m. and the UPS bombing raids are still going on. Literally flying about 5' above the treetops. They should use the pathway that was created for them by taking all those people's houses.	1
									Received	LRAA	139

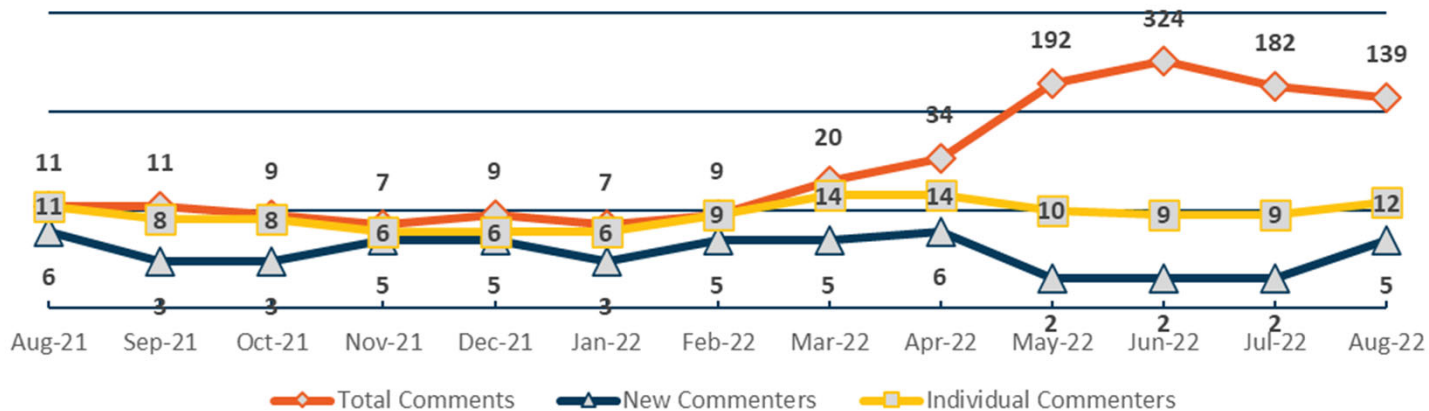
- Standard:** Indicates the "Most Preferred" runway configuration was being utilized at the time of the comment.
Non-Standard: Indicates that a "Lesser Preferred" runway configuration was being utilized at the time of the comment.
QHP: QuieterHome Program
- This column is used to indicate the conditions which most likely necessitated a deviation from the standard procedures.
- Comments may be edited for space, format, or unrelated content.

Comment Location (SDF/LOU)

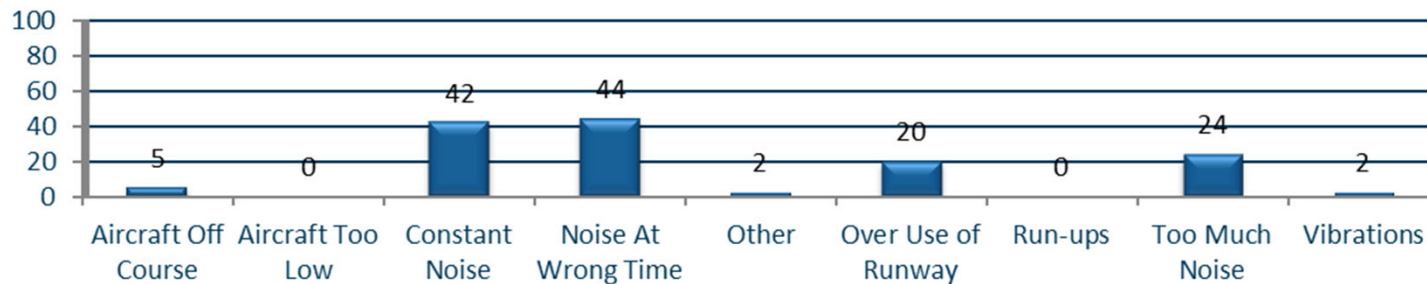
August 2022



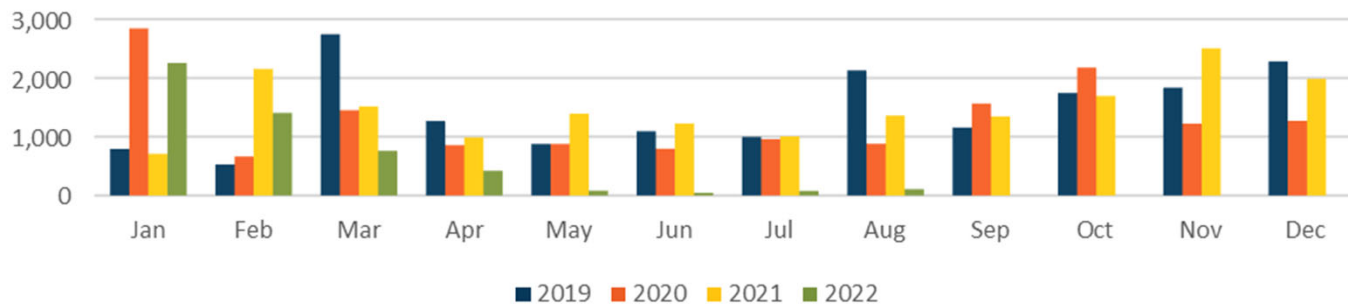
Total, New, and Individual Comments (SDF/LOU)



Comment Type (SDF and LOU) August 2022



Operations Per Complaint (SDF)



Daily Runway Use Uncorrected (SDF) July 2022

Flow	Time	Fri 7-1	Sat 7-2	Sun 7-3	Mon 7-4	Tue 7-5	Wed 7-6	Thu 7-7	Fri 7-8	Sat 7-9	Sun 7-10	Mon 7-11	Tue 7-12	Wed 7-13	Thu 7-14	Fri 7-15	Sat 7-16	Sun 7-17	Mon 7-18	Tue 7-19	Wed 7-20	Thu 7-21	Fri 7-22	Sat 7-23	Sun 7-24	Mon 7-25	Tue 7-26	Wed 7-27	Thu 7-28	Fri 7-29	Sat 7-30	Sun 7-31	Time				
North Flow	0:00																																0:00				
	0:30																																	0:30			
	1:00																																	1:00			
	1:30																																	1:30			
	2:00	X																																2:00			
	2:30																																		2:30		
South Flow	3:00																																	3:00			
	3:30		X																															3:30			
	4:00							X	X				X															X						4:00			
	4:30																																		4:30		
	5:00														X																				5:00		
	5:30						X						X				X			X															5:30		
	6:00																																		6:00		
	6:30										X																								6:30		
	7:00																																			7:00	
	7:30																																			7:30	
	8:00																																X			8:00	
8:30																																			8:30		
North Flow	9:00	X																																	9:00		
	9:30																																			9:30	
	10:00								X																											10:00	
	10:30														X																					10:30	
	11:00						X																													11:00	
	11:30																																			11:30	
	12:00																																			12:00	
	12:30																																X			12:30	
	13:00																																				13:00
	13:30																																				13:30
South Flow	14:00														X																					14:00	
	14:30																																				14:30
	15:00																																				15:00
	15:30																																				15:30
	16:00																											X	X					X			16:00
	16:30														X																					16:30	
	17:00																												X	X							17:00
	17:30						X							X		X							X													17:30	
	18:00							X						X															X								18:00
	18:30																												X								18:30
	19:00																												X								19:00
19:30																																				19:30	
20:00																																	X		X		20:00
20:30														X																						20:30	
21:00																																					21:00
21:30																																					21:30
North Flow	22:00																											XX									22:00
	22:30				X								XX		X	X													X	X	X					22:30	
	23:00																		X										XX	X	X						23:00
	23:30																																				
Flow	Time	Fri 7-1	Sat 7-2	Sun 7-3	Mon 7-4	Tue 7-5	Wed 7-6	Thu 7-7	Fri 7-8	Sat 7-9	Sun 7-10	Mon 7-11	Tue 7-12	Wed 7-13	Thu 7-14	Fri 7-15	Sat 7-16	Sun 7-17	Mon 7-18	Tue 7-19	Wed 7-20	Thu 7-21	Fri 7-22	Sat 7-23	Sun 7-24	Mon 7-25	Tue 7-26	Wed 7-27	Thu 7-28	Fri 7-29	Sat 7-30	Sun 7-31	Time				

Preferred Flow

DATIS Reported Conditions Indicate Support for Non-Preferred Flow

DATIS Reported Conditions Do Not Indicate Support for Non-Preferred Flow

X Complaint

Source: Louisville International Airport Aircraft Flight Tracking and Noise Management System (AFTNMS)

Daily Runway Use (SDF)

Tower Comments July 2022

Day	Date	Time	Comment
Fri	01-Jul-22		
Sat	02-Jul-22		
Sun	03-Jul-22		
Mon	04-Jul-22		
Tue	05-Jul-22		
Wed	06-Jul-22	1730-2130	Winds forecasted out of NW, Wet Runways
Thu	07-Jul-22		
Fri	08-Jul-22		
Sat	09-Jul-22		
Sun	10-Jul-22	1930-2300	Military exercise in vicinity of final approaches - increased separation required
Mon	11-Jul-22	0900-1130	Forecasted winds out of south
Mon	11-Jul-22	2200-0000	Military exercise in vicinity of final approaches - increased separation required
Tue	12-Jul-22	0000-0230	Military exercise in vicinity of final approaches - increased separation required
Wed	13-Jul-22	2100-2230	Military exercise in vicinity of final approaches - increased separation required
Thu	14-Jul-22	2200-0000	Military exercise in vicinity of final approaches - increased separation required
Fri	15-Jul-22	0000-0230	Military exercise in vicinity of final approaches - increased separation required
Sat	16-Jul-22		
Sun	17-Jul-22		
Mon	18-Jul-22	1130-1330	Forecasted wind, Wet runways
Tue	19-Jul-22	0900-1300	Wind 20010 + forecasted winds
Wed	20-Jul-22		
Thu	21-Jul-22	2030-2130	Wind 29006G15
Fri	22-Jul-22		
Sat	23-Jul-22		
Sun	24-Jul-22		
Mon	25-Jul-22	1900-2130	Winds 33009
Tue	26-Jul-22	2200-0000	Military exercise in vicinity of final approaches - increased separation required
Wed	27-Jul-22	0000-0200	Military exercise in vicinity of final approaches - increased separation required
Wed	27-Jul-22	2200-0000	Military exercise in vicinity of final approaches - increased separation required
Thu	28-Jul-22	0000-0200	Military exercise in vicinity of final approaches - increased separation required
Thu	28-Jul-22	0900-1030	Airport requested to remain south flow
Fri	29-Jul-22		
Sat	30-Jul-22		
Sun	31-Jul-22	0900-0930	late switch, reason unknown
Sun	31-Jul-22	1400-1700	Forecasted winds above tailwind component

Daily Runway Use Uncorrected (SDF) August 2022

Flow	Time	Mon 8-1	Tue 8-2	Wed 8-3	Thu 8-4	Fri 8-5	Sat 8-6	Sun 8-7	Mon 8-8	Tue 8-9	Wed 8-10	Thu 8-11	Fri 8-12	Sat 8-13	Sun 8-14	Mon 8-15	Tue 8-16	Wed 8-17	Thu 8-18	Fri 8-19	Sat 8-20	Sun 8-21	Mon 8-22	Tue 8-23	Wed 8-24	Thu 8-25	Fri 8-26	Sat 8-27	Sun 8-28	Mon 8-29	Tue 8-30	Wed 8-31	Time					
North Flow	0:00																																0:00					
	0:30																																	0:30				
	1:00		X																															1:00				
	1:30																																		1:30			
	2:00																																		2:00			
	2:30																																			2:30		
South Flow	3:00																																		3:00			
	3:30																					X				X							XX		3:30			
	4:00											X													X							X			4:00			
	4:30																			X						X			X						4:30			
	5:00																										X			X					5:00			
	5:30																												X				X		5:30			
	6:00																																		6:00			
	6:30																																			6:30		
	7:00																																			7:00		
	7:30																																			7:30		
	8:00																																			8:00		
8:30																																			8:30			
North Flow	9:00				X												X																		9:00			
	9:30																																			9:30		
	10:00				X																				X											10:00		
	10:30																																			10:30		
	11:00				X																															11:00		
	11:30																																			11:30		
	12:00																																			12:00		
	12:30				X																															12:30		
	13:00				X																															13:00		
	13:30																																				13:30	
South Flow	14:00				X																															14:00		
	14:30																			X						X										14:30		
	15:00																			X										X						15:00		
	15:30	X										X																						XX		15:30		
	16:00				X													X		X														X		16:00		
	16:30																										X									16:30		
	17:00				X							X					XX	X		X													X			17:00		
	17:30																			X																17:30		
	18:00																			X																	18:00	
	18:30																		X																		18:30	
	19:00																	X																			19:00	
19:30																																			X		19:30	
20:00																			X							X										20:00		
20:30																																					20:30	
21:00																																					21:00	
21:30																																					21:30	
North Flow	22:00																																				22:00	
	22:30	X																																			22:30	
	23:00																																					23:00
	23:30																																					23:30
0:00																																					0:00	

Preferred Flow

DATIS Reported Conditions Indicate Support for Non-Preferred Flow

DATIS Reported Conditions Do Not Indicate Support for Non-Preferred Flow

X Complaint

Source: Louisville International Airport Aircraft Flight Tracking and Noise Management System (AFTNMS)

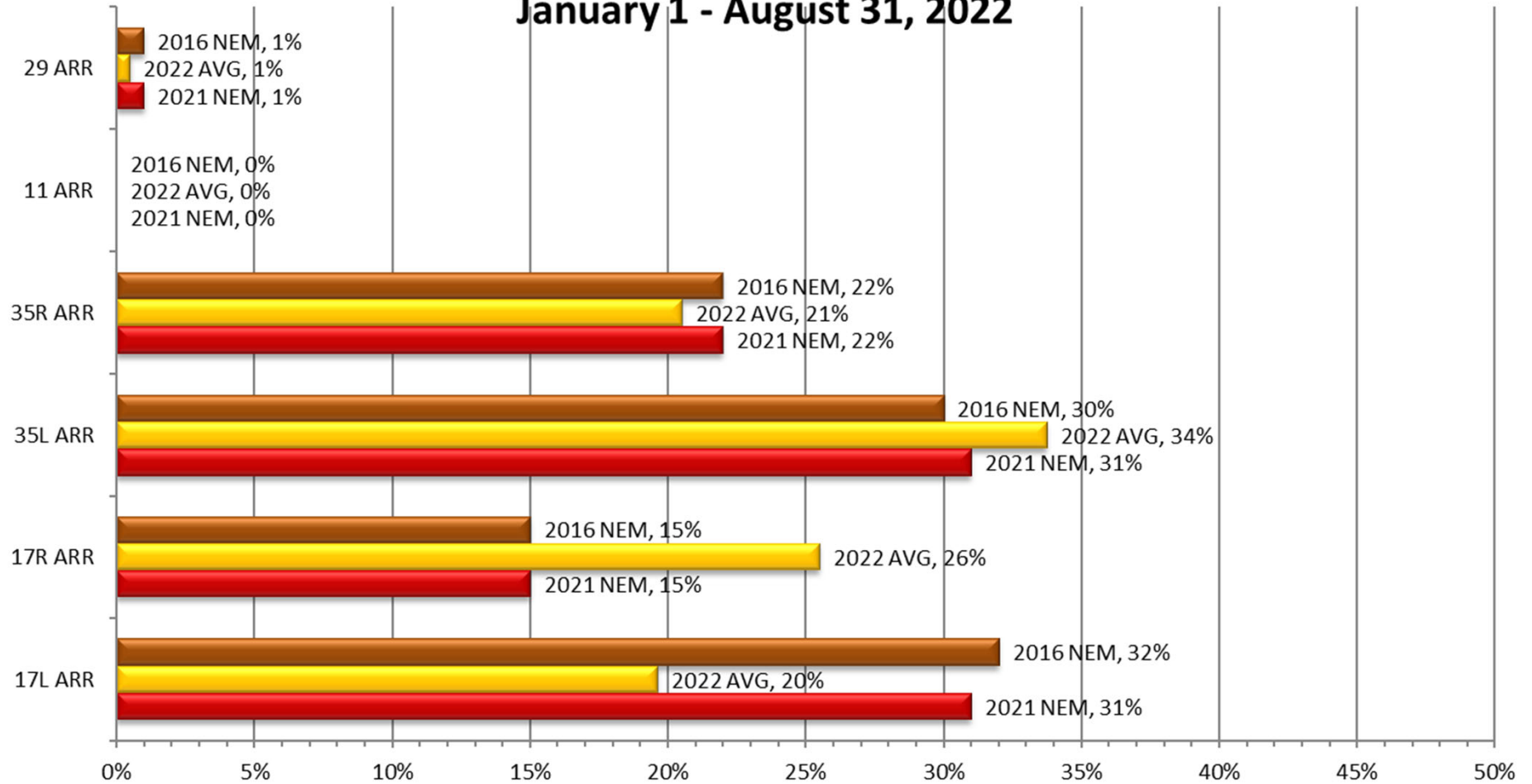
Daily Runway Use (SDF)

Tower Comments August 2022

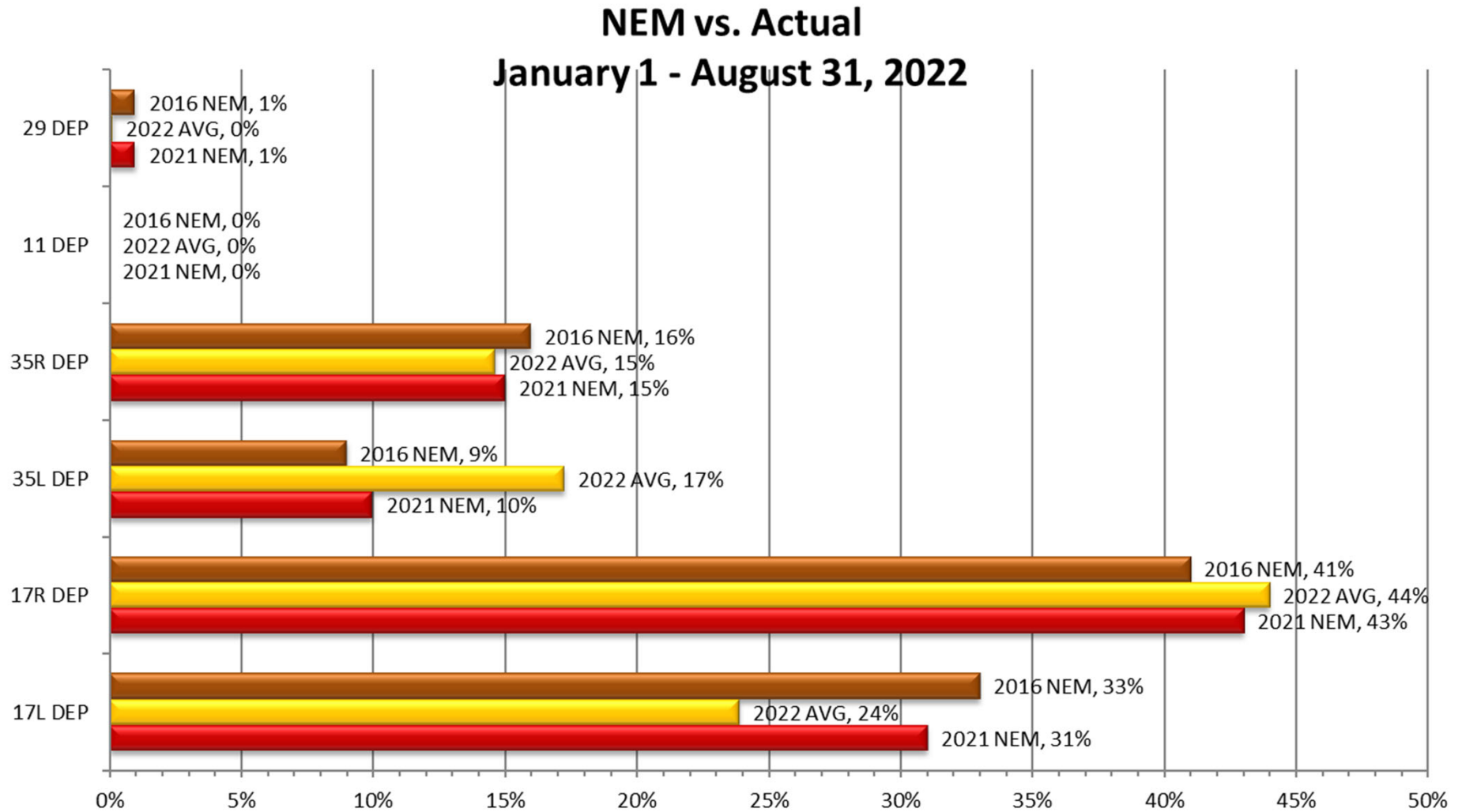
Day	Date	Time	Comment
Mon	01-Aug-22		
Tue	02-Aug-22		
Wed	03-Aug-22		
Thu	04-Aug-22		
Fri	05-Aug-22		
Sat	06-Aug-22		
Sun	07-Aug-22		
Mon	08-Aug-22		
Tue	09-Aug-22		
Wed	10-Aug-22	1730-1830	Remaining North flow for +TS South of SDF
Thu	11-Aug-22	2000-2130	Peak wind 360@09
Fri	12-Aug-22	2030-2130	Peak wind 360@10
Sat	13-Aug-22	0900-0930	Late switch due to traffic and photo mission North of SDF
Sat	13-Aug-22	1400-1430	Peak wind 020@09
Sun	14-Aug-22		
Mon	15-Aug-22		
Tue	16-Aug-22	0700-0830	Early switch to North for wind 360@08
Wed	17-Aug-22		
Thu	18-Aug-22	1600-1830	Variable wind 020@09
Fri	19-Aug-22		
Sat	20-Aug-22		
Sun	21-Aug-22		
Mon	22-Aug-22		
Tue	23-Aug-22		
Wed	24-Aug-22	0800-0830	Facility log reflects South flow
Thu	25-Aug-22	2000-2130	Peak wind 320@10
Fri	26-Aug-22		
Sat	27-Aug-22		
Sun	28-Aug-22		
Mon	29-Aug-22		
Tue	30-Aug-22		
Wed	31-Aug-22		

Runway Use (SDF Arrivals)

NEM vs. Actual
January 1 - August 31, 2022



Runway Use (SDF Departures)



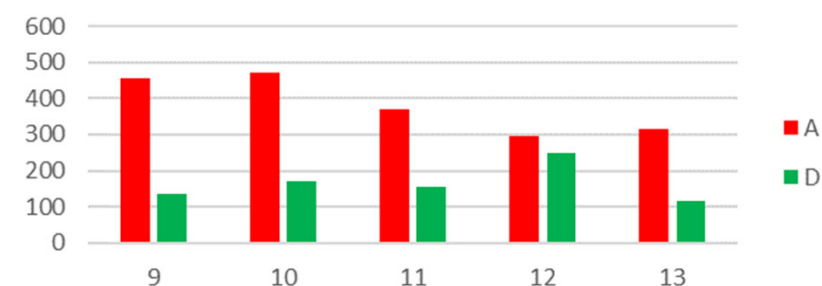
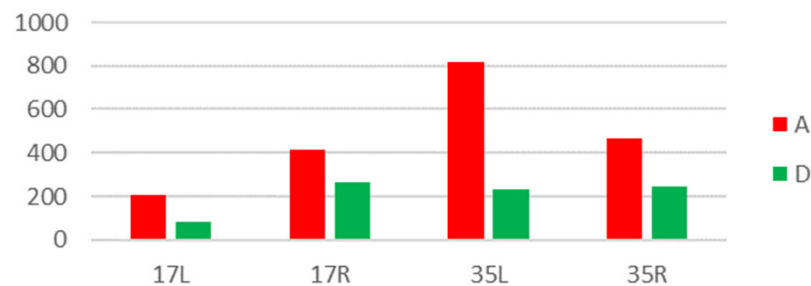
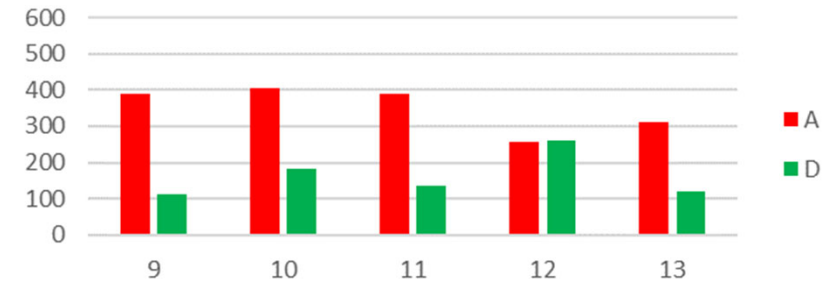
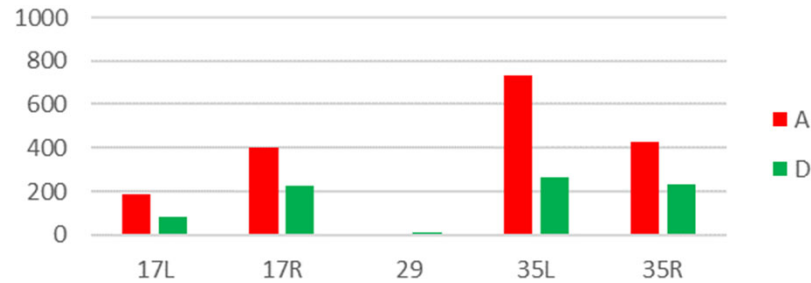
Runway Use 0900L-1400L (SDF)

Runway

Hour

July 2022

August 2022



Gate Compliance by Runway

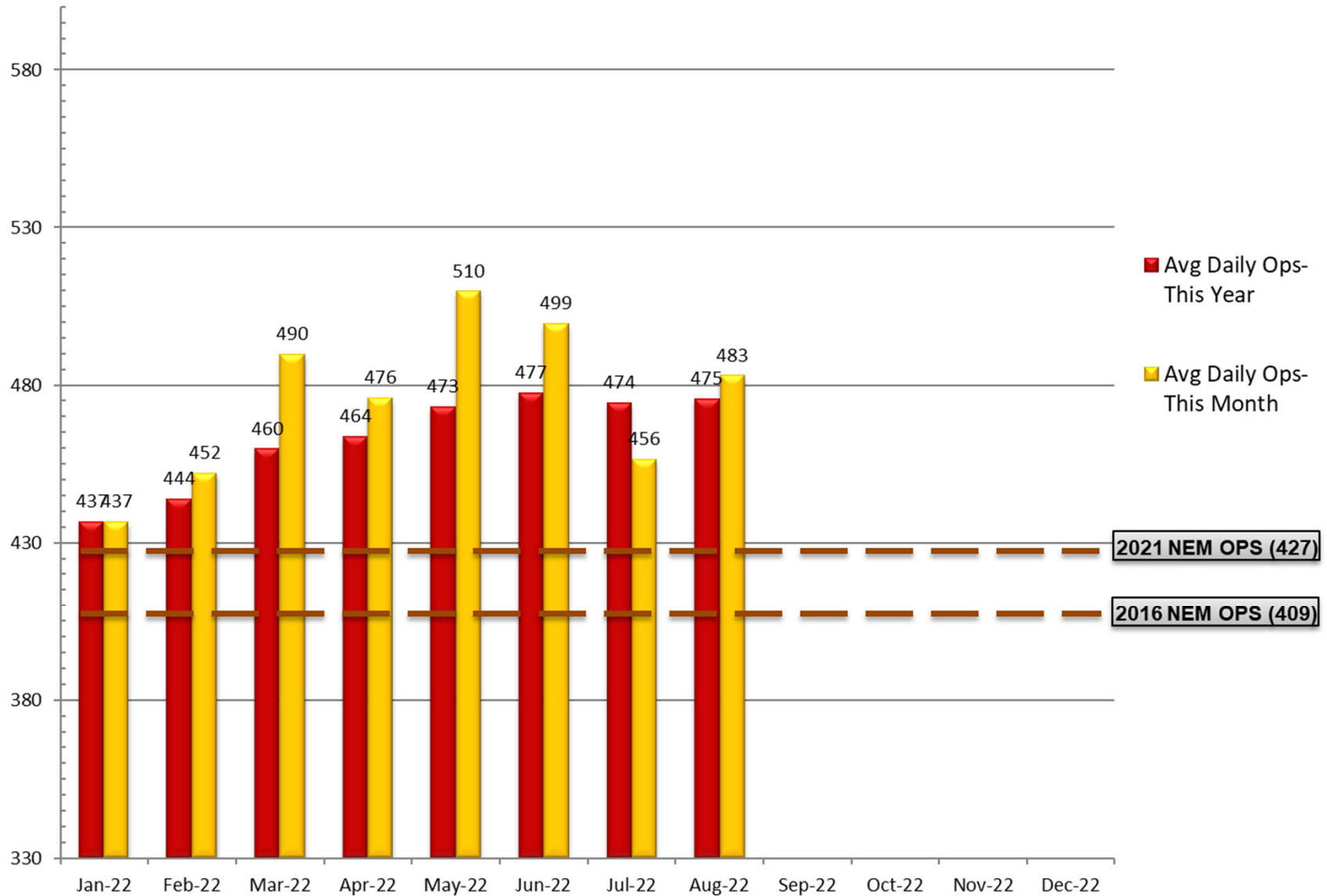
As of August 31, 2022

Month	ARRIVALS Percent Compliant					Departure Percent Compliant				
	17L	17R	35L	35R	ARR AVG	17L	17R	35L	35R	DEP AVG
Sep-20	88%	94%	90%	90%	91%	84%	89%	64%	86%	81%
Oct-20	91%	94%	92%	92%	92%	76%	91%	73%	85%	81%
Nov-20	88%	95%	92%	88%	91%	74%	91%	72%	80%	79%
Dec-20	93%	96%	92%	91%	93%	73%	91%	77%	77%	80%
Jan-21	93%	95%	94%	91%	93%	78%	92%	70%	77%	79%
Feb-21	93%	94%	95%	92%	94%	72%	86%	73%	86%	79%
Mar-21	90%	96%	88%	91%	91%	72%	87%	64%	82%	76%
Apr-21	91%	95%	92%	89%	92%	68%	88%	75%	86%	79%
May-21	91%	95%	90%	89%	91%	83%	89%	69%	87%	82%
Jun-21	93%	96%	92%	91%	93%	80%	89%	67%	90%	82%
Jul-21	90%	94%	92%	91%	92%	82%	87%	76%	88%	83%
Aug-21	92%	95%	92%	93%	93%	82%	90%	71%	89%	83%
Sep-21	92%	93%	91%	94%	93%	79%	90%	67%	86%	81%
Oct-21	92%	95%	92%	91%	93%	78%	88%	66%	85%	79%
Nov-21	90%	94%	91%	90%	91%	74%	90%	73%	86%	81%
Dec-21	92%	97%	93%	90%	93%	68%	88%	69%	80%	76%
Jan-22	90%	96%	93%	91%	93%	74%	90%	74%	87%	81%
Feb-22	91%	96%	93%	90%	93%	64%	89%	71%	81%	76%
Mar-22	91%	96%	93%	91%	93%	72%	88%	74%	84%	80%
Apr-22	94%	95%	92%	91%	93%	75%	90%	68%	73%	77%
May-22	93%	95%	93%	93%	94%	75%	86%	74%	83%	80%
Jun-22	92%	92%	90%	91%	91%	78%	91%	68%	85%	81%
Jul-22	94%	95%	93%	94%	94%	77%	88%	66%	88%	80%
Aug-22	93%	93%	94%	94%	94%	81%	88%	70%	89%	82%
24 Month Avg.					92%					80%

Source: Louisville International Airport
Aircraft Flight Tracking and Noise Management System (AFTNMS)

Operations (SDF)

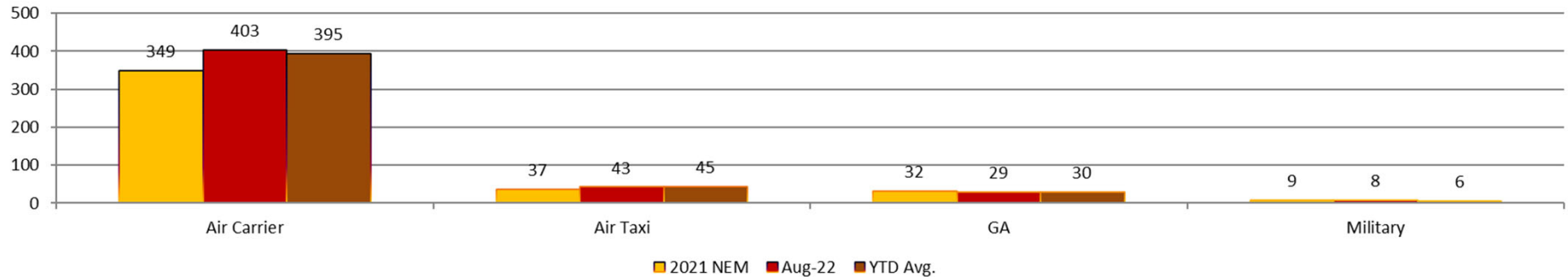
As of August 31, 2022



Operations and Landing (SDF)

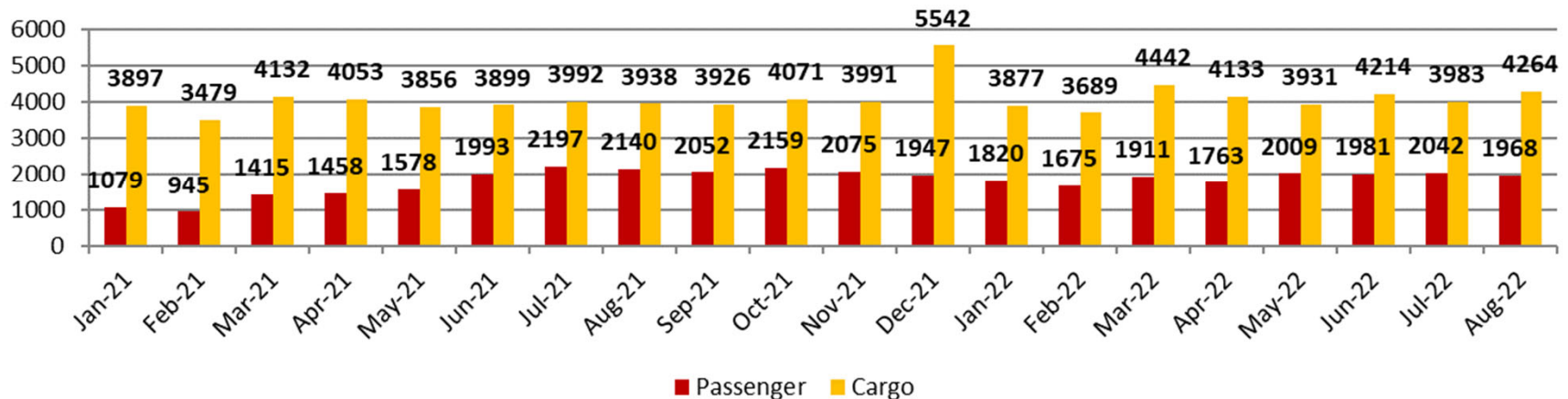
As of August 31, 2022

Average Day Operations by Category

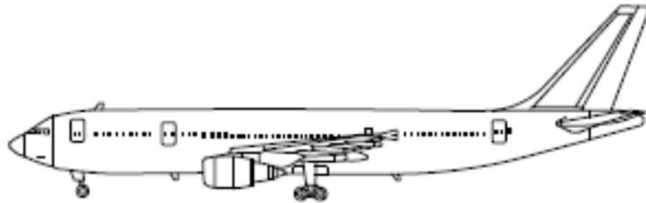


- **Air Carrier.** (AC) Aircraft with seating capacity of more than 60 seats or a maximum payload capacity of more than 18,000 pounds, carrying passengers or cargo for hire or compensation. This includes US and foreign-flagged carriers.
- **Air Taxi.** (AT) Aircraft designed to have a maximum seating capacity of 60 seats or less or a maximum payload capacity of 18,000 pounds or less, carrying passengers or cargo for hire or compensation.
- **General Aviation.** (GA) Takeoffs and landings of all civil aircraft, except for air carriers or air taxis.
- **Military.** (MIL) Operations by all classes of military takeoffs and landings at FAA and FTC facilities.

Landings Passenger/Cargo



Sample Aircraft Types (SDF)



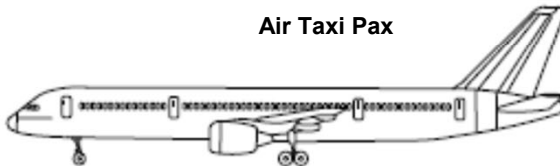
A300
Air Carrier Cargo



B767
Air Carrier Cargo



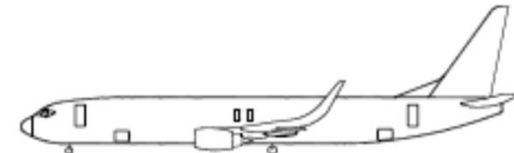
E135/45
Air Taxi Pax



B757
Air Carrier Cargo



MD11
Air Carrier Cargo



B737
Air Carrier Pax



CRJ2
Air Taxi Pax



E170
Air Carrier Pax



MD80
Air Carrier Pax



CRJ9
Air Carrier Pax