

Community Noise Forum
Monday, November 28, 2022
Agenda

- I. Call to order: 6:00 PM
- II. Approval of September 26, 2022, Minutes
- III. Active Noise Cancellation Grant Update
- IV. Airspace Project Update
- V. Part 150 NCP
 - A. Noise Insulation Program
 - B. Contraflow Exceptions
- VI. Current Noise Concerns
 - A. Noise Concerns/Complaints
 - B. Runway Utilization
 - C. Construction and Maintenance Activity
- VII. Guest Comments
- VIII. Announcements
- IX. Next Meeting: January 23, 2023
- X. Adjournment

COMMUNITY NOISE FORUM (CNF)
Monday, September 26, 2022

Members

Brian Sinnwell, LRAA
Mary Rose Evans, LRAA Board
Bob Slattery, LRAA
Patricia Gould, Northeast

Jeff Kozak, UPS
Tom Foote, Airline Affairs
John Sistarenik, ANA
Greg Petto, FAA

Guests

Wendy Harrower, QuieterHome Program
Andrew Gill, LRAA

Edward Mansfield, Merriweather

- I. Call to order:** The meeting was called to order at 6:00 p.m. by John Sistarenik.
- II. Approval of the July 25, 2022, Minutes:** The July meeting notes were reviewed with no changes and approved.
- III. Active Noise Cancellation Grant Update:** Bob reported that on August 22, 2022 the LRAA received a grant officer of \$300,400.00 for the Airport Environmental Mitigation Pilot Program to Install an Active Noise Control system to reduce aircraft noise from start-of-takeoff operations. With the LRAA match the total for the project will be \$600,800.00. John Sistarenik asked when work might begin on the project. Bob Slattery replied that there is not a firm schedule in place however, he would estimate sometime around the first of the year.
- IV. Airspace Project Update:** Bob reported that the FAA meeting to review the proposed procedures and project schedule that was supposed to happen on August 31 was postponed until December 2 due to Louisville's COVID status. Jeff Kozak reported that he is slated to be in the simulator on Thursday with the local FAA to validate arrival and departure procedures for the redesign.
- V. Part 150 NCP:**
- A. Noise Insulation Program: Residential** – This project is to sound insulate residences within the DNL 65 contour of the 2021 Noise Exposure Map. Construction is complete for the first 3 groups of 107 families. A contract has been awarded for a 4th group of 20 families which is currently in the material procurement process. A project for an additional 33 families was awarded at the board meeting in April. Designs for an additional 30 are completed. A grant offer for \$13.1 million was received on September 2, 2022. This includes the \$4.6 million announced in July. With the LRAA match the total will be \$14.4 million for the continuation of the current sound insulation

program. We are currently in process of completing a Short Form Environmental Assessment (EA) which will need to be completed prior to moving forward with the program. A draft has been submitted to the FAA for their review and once the FAA approves the draft it will be made available for public comment. The comment period is typically 30 days.

- B. Contraflow Exceptions:** Contraflow for July was 55% for arrivals from the south and 95% for departures to the south. In August arrivals from the south were 78% and departures to the south were 89%. Daily summaries for each month are contained in the handout. For calendar year 2022 arrivals from the south are 66% and departures to the south are 78%. A monthly summary going back 8 years is included in the handout.

VI. Current Noise Concerns:

- A. Report on Noise Concerns/Complaints:** A total of 182 comments from 9 individuals were received in July. In August, 139 comments from 12 individuals were received. Comments and locations are contained in the handout. Bob displayed a map of Aircraft Noise Events that May Interfere with Speech Outdoors. This is used to help explain that the data contained in the noise model (AEDT) does show that even though an area may not be within the DNL 65 contour, the model does take into account the noise at locations outside the DNL 65 contour. John responded that this indicates that even though someone is located outside of the DNL 65 contour they would still experience single noise events that could be disruptive, and that information is contained in the model. It is just a different way of measuring the noise.
- B. Runway Utilization:** Runway utilization for July and August are contained in the handout. Daily runway utilization comments from the Air Traffic Control Tower for July and August are also included in the handout.
- C. Construction and Maintenance Activity:** Brian Sinnwell reported that the work on the east side of the airport has been completed for this year. The focus is now on the west runway for pavement rehab and lighting work. This work is scheduled to continue through mid-November and will include some weekend closures. That should finish up the work for this year. Mary Rose asked what the status is for the Noise Exposure Map Update. Bob responded that we are currently working with the FAA to get funding. We are still hoping to begin the process early next year, but it will depend on FAA funding. Mary Rose also asked about the EA for the sound insulation program and if it is true that 30 families will have to wait until the EA has been completed before moving forward. Bob replied that there are 20 families that have materials on order and another 33 families that have completed designs that are currently on hold until the EA is completed. Mary Rose replied that that is just sad and asked what timeframe we think we are looking at. Bob replied that are currently waiting for the FAA to give approval for the public comment period to begin. Once the FAA gives the go ahead, we can advertise and the comment period is typically

30 days. Once we get comments back and the FAA has a chance to review them and determine there are not environmental issues which have not been addressed. They should be able to complete their review and give the approval to move forward. The overall time depends on how fast the FAA can complete their review. Mary Rose asked if there was anything we could do to let the FAA know it is important to move forward on this and people are sitting here waiting. Bob replied that at this point he did not think so, but maybe in a few weeks if we still have not heard anything we may need to start getting concerned. John asked why we had to do this EA and how could mitigating noise cause environmental issues. Bob replied that the FAA required it when they gave us the grant.

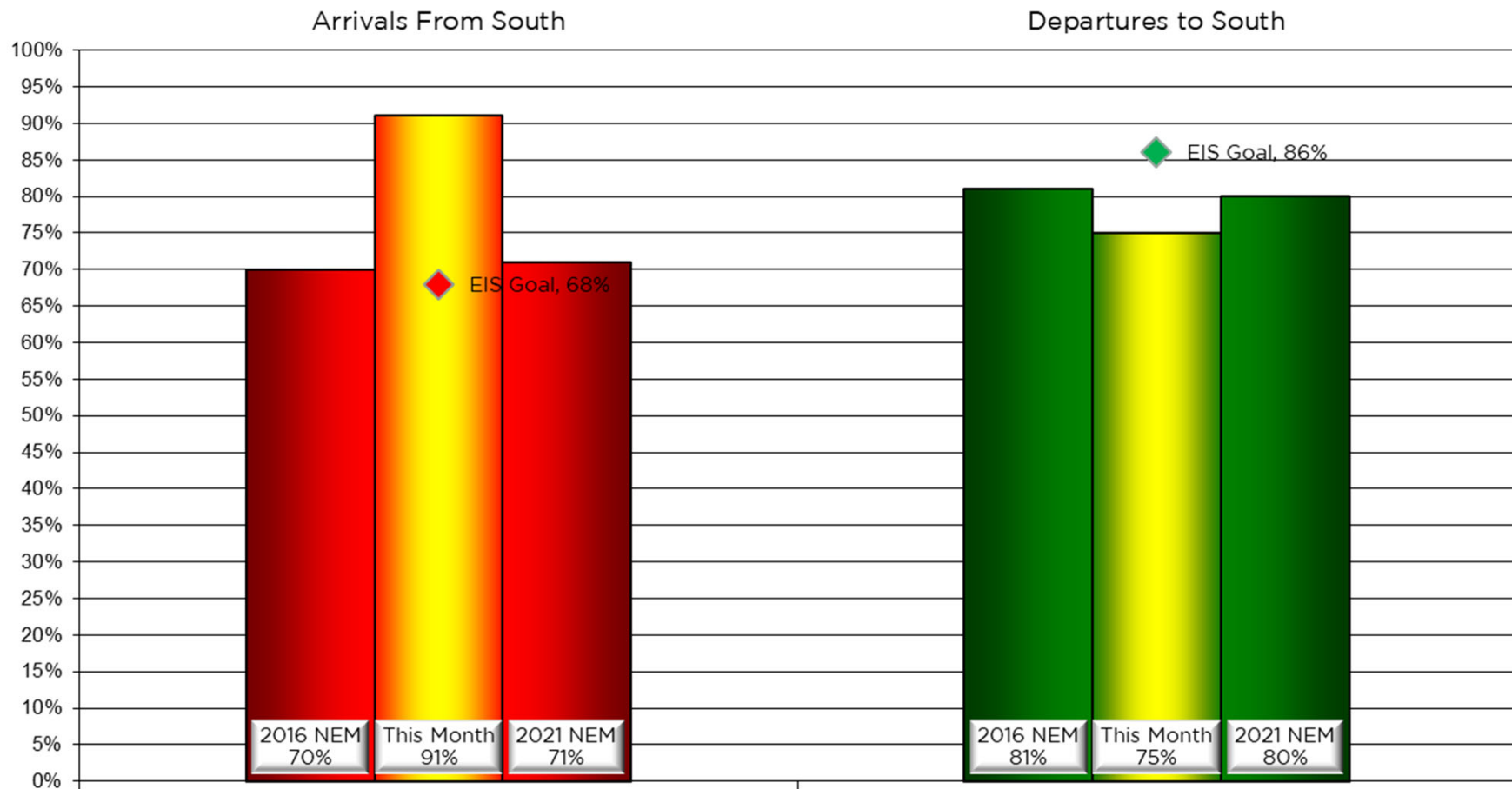
VII. Guest Comments: In the meeting chat, Mr. Mansfield asked if Bob Slattery could review again how the number of events map and the noise exposure map intersect. John Sistarenik said he thought that it was covered earlier in the meeting and asked if Mr. Mansfield would mind if they adjourned the meeting and he could stay on with Bob to go over map again. Mr. Mansfield said that would be fine.

VIII. Announcements: None.

IX. Next Meeting: November 28, 2022

X. Adjournment: A motion was made to adjourn the meeting at 6:35 p.m.

Monthly Contraflow September 1-30, 2022



Nightly Runway Use Summary – September 2022

(from 10:00 PM date list in first column to 7:00 AM the following morning)

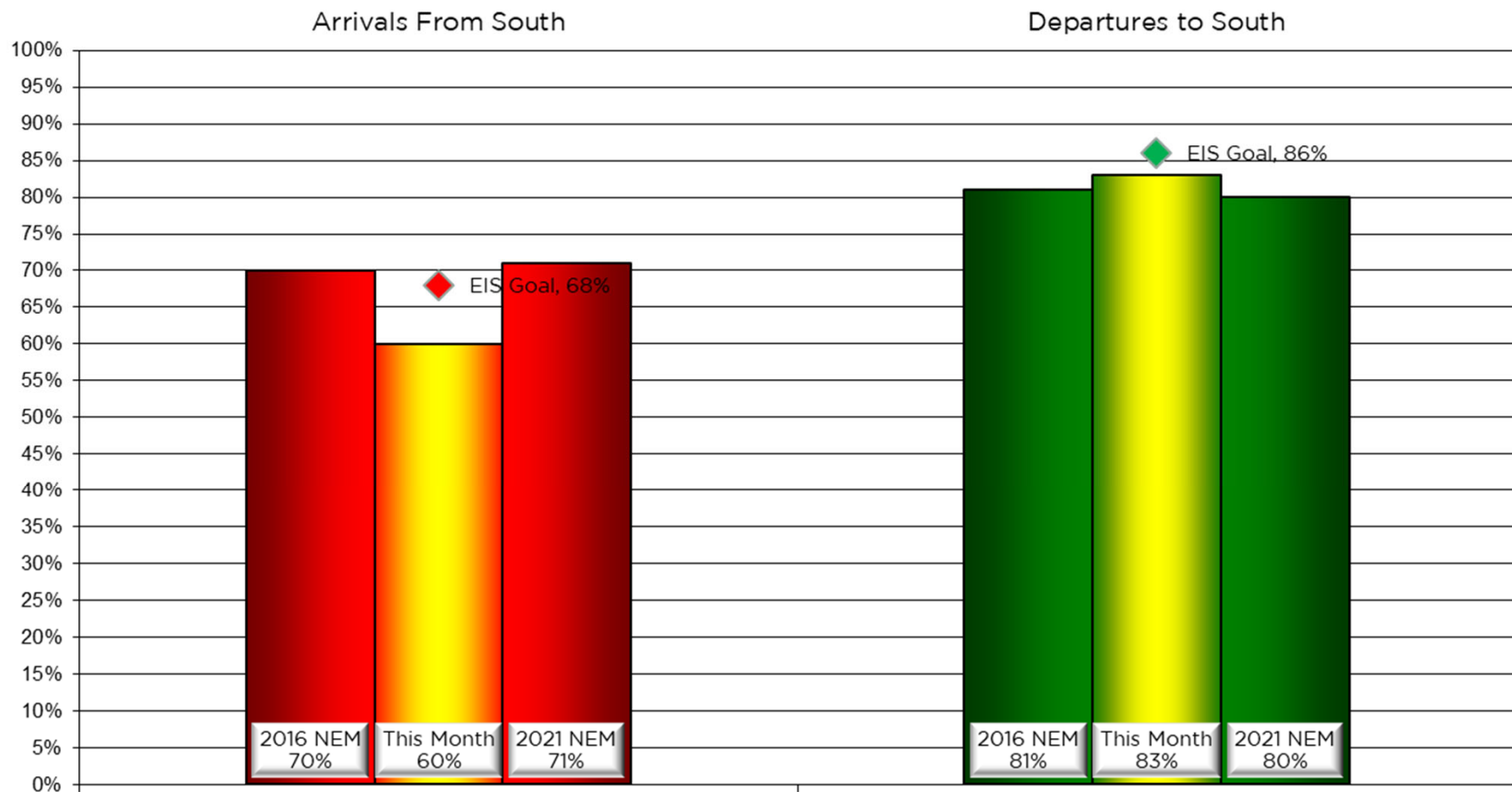
		% of all arrivals from the south										% of all departures to the south																																																																																																																																																																																																																																																																																																																																																																																																																																																																																																																																																																																											
Date	Day	* in	Runway#							Unknown	Notes /																																																																																																																																																																																																																																																																																																																																																																																																																																																																																																																																																																																												

Preferred Flow

DATIS Reported Conditions Indicate Support for Non-Preferred Flow

DATIS Reported Conditions Do Not Indicate Support for Non-Preferred Flow

Monthly Contraflow October 1-31, 2022



Nightly Runway Use Summary - October 2022

(from 10:00 PM date list in first column to 7:00 AM the following morning)

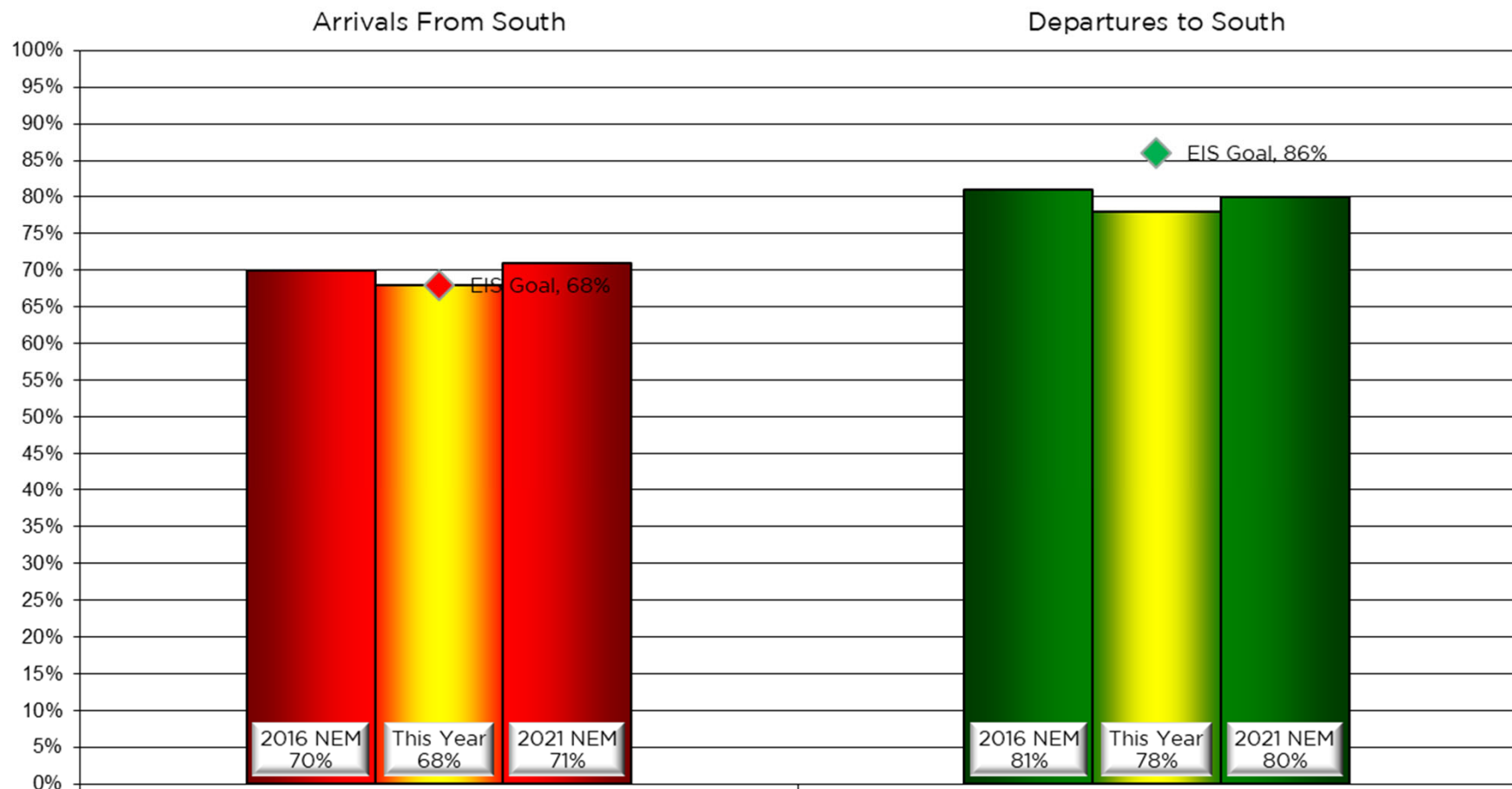
		% of all arrivals from the south										% of all departures to the south									
Date	Day	* in compliance	Runway#						Unknown Runway Use	Notes / Comments		** in compliance	Runway#						Unknown Runway Use	Notes / Comments	
			11	17L	17R	29	35L	35R					11	17L	17R	29	35L	35R			
10-03-22	Mon	96%			1	3		58	38	0		88%			38	50		7	5	0	
10-04-22	Tue	96%			1	3		58	38	0		88%			35	53		8	4	0	
10-05-22	Wed	97%			1	2		61	36	0		91%			34	57		6	3	0	
10-06-22	Thu	99%				1		62	37	0		73%			29	44		13	14	0	
10-07-22	Fri	100%						62	38	0		0%						51	49	0	350-010@5-23kts
10-08-22	Sat																				
10-09-22	Sun																				
10-10-22	Mon	94%			1	5		58	36	0		90%			38	52		8	2	0	
10-11-22	Tue	0%			40	60				0	130-150@9-13kts	100%			38	62				0	
10-12-22	Wed	2%			42	56		1	1	0	220-250@13-25kts,g38	59%			25	34		18	23	0	
10-13-22	Thu	96%			1	3		59	37	0		91%			34	57		5	4	0	
10-14-22	Fri	0%			35	65				0	170-200@7-36kts,g54	100%			43	57				0	
10-15-22	Sat																				
10-16-22	Sun																				
10-17-22	Mon	100%						61	39	0		0%						59	41	0	290-330@15-36kts,g48
10-18-22	Tue	94%			1	5		56	38	0		89%			36	53		7	4	0	
10-19-22	Wed	97%			1	2		61	36	0		89%			37	52		6	5	0	
10-20-22	Thu	0%			41	59				0	130-160@7-19kts,g34	100%			40	60				0	
10-21-22	Fri	0%			37	63				0	100-140@7-19kts,g33	100%			39	61				0	
10-22-22	Sat																				
10-23-22	Sun																				
10-24-22	Mon	0%			42	58				0	120-160@5-15kts	100%			43	57				0	
10-25-22	Tue	0%			40	59	1			0	140-240@11-46kts,g69,ra	100%			38	62				0	
10-26-22	Wed	97%			1	2		57	40	0		92%			38	54		6	2	0	
10-27-22	Thu	97%				3		56	41	0		88%			35	53		8	4	0	
10-28-22	Fri	94%			2	4		61	33	0		95%			40	55		2	3	0	
10-29-22	Sat																				
10-30-22	Sun																				
10-31-22	Mon	0%			43	57				0	200-270@5-21kts,ra	100%			40	60				0	

Preferred Flow

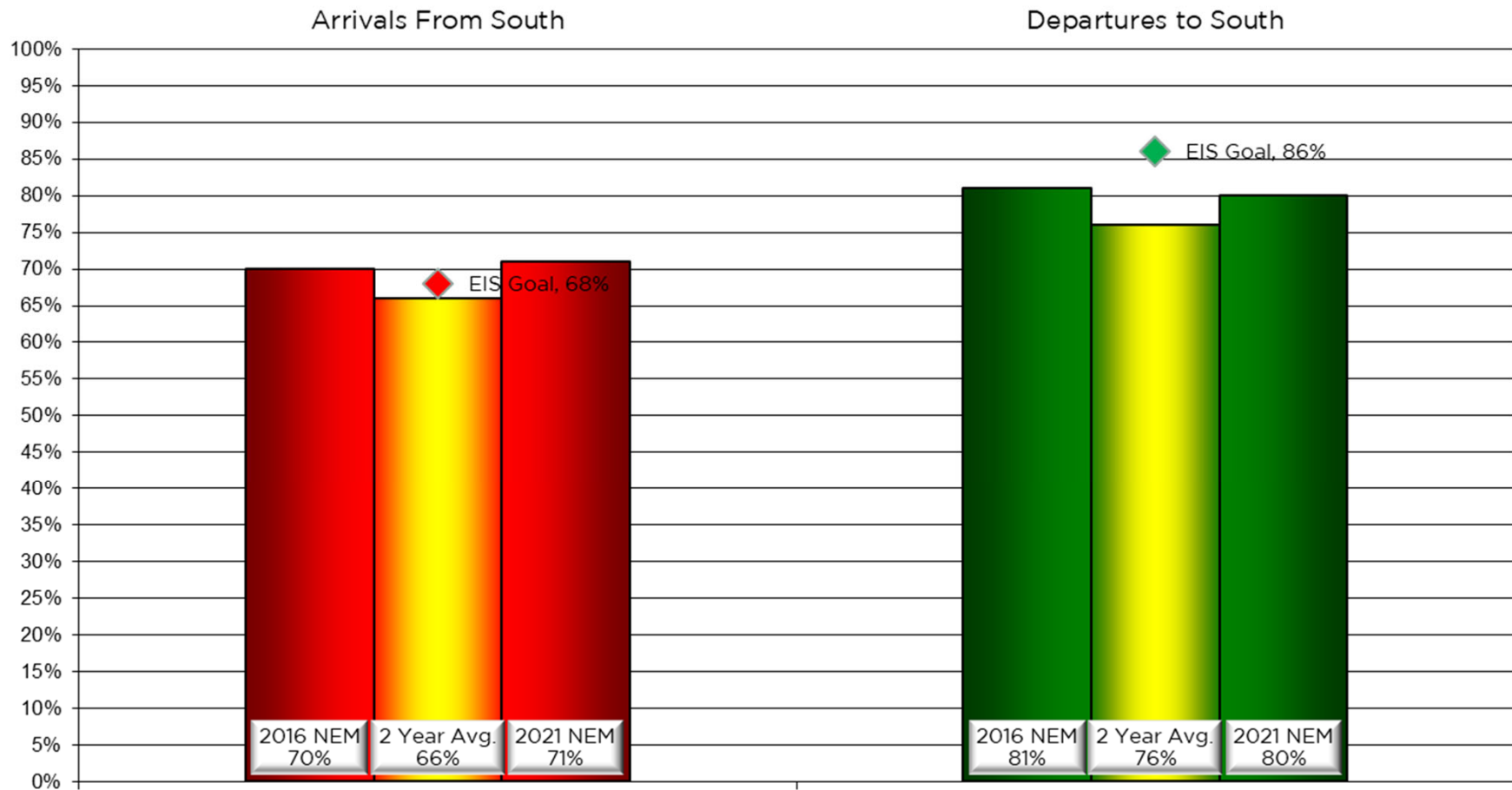
DATIS Reported Conditions Indicate
Support for Non-Preferred Flow

DATIS Reported Conditions Do Not Indicate
Support for Non-Preferred Flow

Contraflow This Year As of October 31, 2022



Contraflow 2 Year Average November 2020 - October 2022



Year-to-Year by Month Percent*

Contraflow

Arrivals From the South (Goal 68%)										Departures to the South (Goal 86%)									
	2015	2016	2017	2018	2019	2020	2021	2022	Avg		2015	2016	2017	2018	2019	2020	2021	2022	Avg
Jan	76%	69%	65%	60%	75%	56%	71%	78%	69%	Jan	76%	69%	61%	72%	69%	82%	71%	65%	71%
Feb	66%	80%	58%	67%	78%	78%	87%	67%	73%	Feb	76%	67%	77%	70%	57%	43%	45%	56%	61%
Mar	71%	63%	79%	84%	82%	65%	51%	62%	70%	Mar	66%	77%	62%	61%	89%	64%	77%	77%	72%
Apr	53%	86%	56%	73%	65%	71%	62%	64%	66%	Apr	77%	73%	80%	72%	82%	69%	75%	82%	76%
May	75%	62%	75%	43%	65%	71%	71%	51%	64%	May	80%	80%	80%	89%	90%	90%	63%	83%	82%
Jun	57%	79%	74%	74%	50%	69%	65%	67%	67%	Jun	91%	83%	93%	91%	91%	88%	84%	70%	86%
Jul	74%	59%	85%	90%	75%	72%	70%	55%	73%	Jul	80%	91%	85%	77%	87%	91%	76%	95%	85%
Aug	86%	76%	79%	72%	88%	82%	74%	78%	79%	Aug	91%	90%	90%	88%	89%	87%	88%	89%	89%
Sep	95%	88%	85%	80%	83%	83%	63%	91%	84%	Sep	73%	93%	31%	87%	77%	85%	90%	75%	76%
Oct	86%	81%	81%	77%	79%	71%	69%	68%	77%	Oct	74%	81%	82%	76%	78%	72%	76%	78%	77%
Nov	59%	74%	69%	76%	70%	51%	61%		68%	Nov	88%	77%	75%	54%	72%	78%	81%		73%
Dec	55%	75%	74%	72%	76%	67%	56%		69%	Dec	79%	62%	74%	61%	72%	69%	80%		71%
Avg	71%	74%	73%	72%	74%	70%	67%	68%		Avg	79%	79%	74%	75%	79%	77%	76%	77%	

NOISE COMMENT REPORT

LOUISVILLE REGIONAL AIRPORT AUTHORITY



September 2022

Comments (SDF/LOU)

September 2022

Street	Zip Code	CNF Quad / 2021 DNL	Time Received	Time	Airport	Disturbance Type	Status	Operation or Comment Type ¹	Deviation Type ²	Comments ³	Number of Contacts
7419 York River RD	40214	SW (<60)	2022-09-01 05:39:00	2022-09-01 05:39:00	SDF	Aircraft Off Course	Investigated	Standard	None	Woke early this morning with UPS takeoff noise. It seems to be getting worse. The planes are closer even though they are higher. You can watch every one of them bank and turn early. Something has to be done. You can't get enough sleep at night.	1
3016 Greenup RD	40217	NE (<60)	2022-09-01 12:40:00	2022-09-01 12:40:00	SDF	Noise At Wrong Time	Investigated	Standard	None	Why are the bombing raids going to the north again. The pathway is to the south. Not a leaf is moving. Go do your job and fix it. (Representative of 1 additional comment received within the hour.)	2
3016 Greenup RD	40217	NE (<60)	2022-09-01 13:05:00	2022-09-01 13:05:00	SDF	Over Use of Runway	Investigated	Standard	None	The bombing raids are still going. They have been going for 3 hours. The pathway is to the south. Go do your job.	1
3016 Greenup RD	40217	NE (<60)	2022-09-01 14:16:00	2022-09-01 14:16:00	SDF	Constant Noise	Investigated	Standard	None	Why are bombing raids still going. It has been 4 hours. Why don't you go to the tower, talk to them and challenge the lies they tell you. The pathway is to the south. I am sitting here trying to work. I know that is a forgone concept to you so go do your job.	1
7419 York River RD	40214	SW (<60)	2022-09-02 03:55:00	2022-09-02 03:55:00	SDF	Aircraft Off Course	Investigated	Standard	None	UPS early morning takeoffs. Same problem we have always had.	1
3016 Greenup RD	40217	NE (<60)	2022-09-04 10:35:00	2022-09-04 10:35:00	SDF	Noise At Wrong Time	Investigated	Standard	None	It is Sunday morning why are the UPS bombing raids going to the north. Why are they flying at all it is Sunday morning.	1

1. **Standard:** Indicates the "Most Preferred" runway configuration was being utilized at the time of the comment.
Non-Standard: Indicates that a "Lesser Preferred" runway configuration was being utilized at the time of the comment.
QHP: QuieterHome Program
2. This column is used to indicate the conditions which most likely necessitated a deviation from the standard procedures.
3. Comments may be edited for space, format, or unrelated content.

Comments (SDF/LOU)

September 2022

Street	Zip Code	CNF Quad / 2021 DNL	Time Received	Time	Airport	Disturbance Type	Status	Operation or Comment Type ¹	Deviation Type ²	Comments ³	Number of Contacts
7419 York River RD	40214	SW (<60)	2022-09-06 04:43:00	2022-09-06 03:45:00	SDF	Too Much Noise	Investigated	Standard	None	Calling to complain about early morning takeoffs again this this morning. It started about 3:45 a.m. and they have been going every 2 minutes. This needs to be addressed or I will continue to call every 2 minutes.	1
1673 Holsclaw Hill Rd	40109	SW (60-65)	2022-09-06 03:57:00	2022-09-06 03:57:00	SDF	Noise At Wrong Time	Investigated	Standard	None	It is Tuesday morning at 3:20 a.m. The planes are out of control and very disturbing as usual.	1
3016 Greenup RD	40217	NE (<60)	2022-09-07 07:42:00	2022-09-07 07:42:00	SDF	Over Use of Runway	Investigated	Non-Standard	Weather	Why are the UPS bombing raids going non-stop for over 4 hours now? 10 seconds behind each other, 2 or 3 at a time. Why? Their pathway is to the south.	1
3016 Greenup RD	40217	NE (<60)	2022-09-07 17:32:00	2022-09-07 17:32:00	SDF	Over Use of Runway	Investigated	Non-Standard	Weather	Why are the UPS bombing raids going on? They went on for 4 hours this morning and they are still going non-stop to the north. Their pathway is to the south. Fix it.	1
1054 Ardmore Dr	40217	NE (<60)	2022-09-07 17:35:00	2022-09-07 17:35:00	SDF	Too Much Noise	Investigated	Non-Standard	Weather	The airport noise woke me up about 3:00 a.m. this morning. I came home today to watch a little TV and you can't even hear it. I had all my doors and windows closed and it is still loud.	1
3016 Greenup RD	40217	NE (<60)	2022-09-07 18:16:00	2022-09-07 18:16:00	SDF	Too Much Noise	Investigated	Non-Standard	Weather	The bombing raids are still going on. Why are they flying 24/7 to the north, why are they flying 24/7 at all? Regulate them.	1
7419 York River RD	40214	SW (<60)	2022-09-08 04:43:00	2022-09-08 04:43:00	SDF	Noise At Wrong Time	Investigated	Standard	None	Loud noise again early this morning. Cannot go back to sleep because planes are flying over the house every 2 minutes.	1

1. **Standard:** Indicates the "Most Preferred" runway configuration was being utilized at the time of the comment.
Non-Standard: Indicates that a "Lesser Preferred" runway configuration was being utilized at the time of the comment.
QHP: QuieterHome Program
2. This column is used to indicate the conditions which most likely necessitated a deviation from the standard procedures.
3. Comments may be edited for space, format, or unrelated content.

Comments (SDF/LOU)

September 2022

Street	Zip Code	CNF Quad / 2021 DNL	Time Received	Time	Airport	Disturbance Type	Status	Operation or Comment Type ¹	Deviation Type ²	Comments ³	Number of Contacts
3016 Greenup RD	40217	NE (<60)	2022-09-08 14:14:00	2022-09-08 14:14:00	SDF	Over Use of Runway	Investigated	Non-Standard	Weather	Why are the UPS bombing raids headed north. This is the third day in a row. 10 seconds behind each other, 2 or 3 at a time. When are you going to do something about it. That is your job.	1
7419 York River RD	40214	SW (<60)	2022-09-09 05:01:00	2022-09-09 04:00:00	SDF	Noise At Wrong Time	Investigated	Standard	None	Loud UPS takeoff noise again this morning. Started at about 4:00 a.m. and it is still going on about every 2 minutes.	1
7419 York River RD	40214	SW (<60)	2022-09-10 05:42:00	2022-09-10 05:42:00	SDF	Constant Noise	Investigated	Standard	None	Woken early this morning with UPS takeoffs. It has been every day. Banking and turning hard on the west runway going almost over the house can't get any sleep. It is every 2 minutes.	1
7419 York River RD	40214	SW (<60)	2022-09-13 16:43:00	2022-09-13 04:00:00	SDF	Too Much Noise	Investigated	Standard	None	Awoken at 4:00 a.m. with UPS takeoffs from west runway departing south. Banking and turning WSW every two minutes and we cannot sleep. Also, starting at 4 pm in the afternoon with the same problem now, every two minutes and we cannot sit outside and have a conversation on my back deck. We have to turn up the TV (double from regular volume) when inside at this time. I do not see any UPS taking off from the east runway. Why is that?	1
1673 Holsclaw Hill Rd	40109	SW (60-65)	2022-09-14 04:58:00	2022-09-14 04:58:00	SDF	Aircraft Too Low	Investigated	Standard	None	We just had one going to Dubi about 1500' over our house. His number was N624UP a 747-8F. He shook are house unbelievable. They always fly lower at night. They have got to do something different.	1

1. **Standard:** Indicates the "Most Preferred" runway configuration was being utilized at the time of the comment.
Non-Standard: Indicates that a "Lesser Preferred" runway configuration was being utilized at the time of the comment.
QHP: QuieterHome Program
2. This column is used to indicate the conditions which most likely necessitated a deviation from the standard procedures.
3. Comments may be edited for space, format, or unrelated content.

Comments (SDF/LOU)

September 2022

Street	Zip Code	CNF Quad / 2021 DNL	Time Received	Time	Airport	Disturbance Type	Status	Operation or Comment Type ¹	Deviation Type ²	Comments ³	Number of Contacts
3016 Greenup RD	40217	NE (<60)	2022-09-14 17:28:00	2022-09-14 17:28:00	SDF	Over Use of Runway	Investigated	Non-Standard	None	Why are the UPS bombing raids going non-stop to the north. Their pathway is to the south, always to the south. There is no wind. Do you job.	1
7419 York River RD	40214	SW (<60)	2022-09-15 03:40:00	2022-09-15 03:40:00	SDF	Noise At Wrong Time	Investigated	Standard	None	Just woken by a loud jet that departed about 3:35 a.m. We are woken up every day at 3:30 by UPS takeoffs on the west runway turning and banking really hard. This has to stop because I am not getting any sleep.	1
1105 Delor Ave	40217	NE (60-65)	2022-09-15 10:04:00	2022-09-15 10:04:00	SDF	Noise At Wrong Time	Investigated	Standard	None	We are getting a lot of outbound airplane noise that we did not use to get. I was checking to see if there was a reason for that and if we could expect it to go on longer.	1
8618 Marion Martin Rd	47111	SI (<60)	2022-09-15 13:45:00	2022-09-15 13:45:00	LOU	Other	Investigated	Standard	None	Every day from dawn to dusk the training flights from Bowman Field are flying over my property. This needs to stop now. I moved out here to get away from all of that. I will call whoever I need to talk with in order to get this to stop, and I will get it stopped.	1
7419 York River RD	40214	SW (<60)	2022-09-16 03:47:00	2022-09-16 03:45:00	SDF	Vibrations	Investigated	Standard	None	I was just awakened at 3:45 a.m. by a UPS jet that was taking off. It rattled the windows. It definitely came well west of the railroad tracks on Fern Valley Road. Not getting much sleep because of these jets taking off in the morning. It is every day now.	1

1. **Standard:** Indicates the “Most Preferred” runway configuration was being utilized at the time of the comment.
Non-Standard: Indicates that a “Lesser Preferred” runway configuration was being utilized at the time of the comment.
QHP: QuieterHome Program
2. This column is used to indicate the conditions which most likely necessitated a deviation from the standard procedures.
3. Comments may be edited for space, format, or unrelated content.

Comments (SDF/LOU)

September 2022

Street	Zip Code	CNF Quad / 2021 DNL	Time Received	Time	Airport	Disturbance Type	Status	Operation or Comment Type ¹	Deviation Type ²	Comments ³	Number of Contacts
7419 York River RD	40214	SW (<60)	2022-09-17 05:40:00	2022-09-17 05:40:00	SDF	Aircraft Off Course	Investigated	Standard	None	I am calling on the behalf of the Yorktown HOA. We represent the community of Yorktown North. We are all having issues over here with noise. I was awakened this morning by early morning takeoffs on the west runway banking and turning wsw. Just for the record I am representing Yorktown North. Many of our members have to sleep with noise machines, and they did not even know they could complain. Let us know when the next meeting is so we can have the right people there. I am not the only one and you know that. You are aware of the problem, you admit there's a problem, we need answers on what needs to be done.	1
7419 York River RD	40214	SW (<60)	2022-09-20 05:34:00	2022-09-20 05:34:00	SDF	Aircraft Off Course	Investigated	Standard	None	Again this morning we had takeoffs from the west runway every 2 minutes. It is waking me up as well as others in the Yorktown North HOA. Watching one takeoff now and he is west of Grade Lane. This has got to stop.	1
1632 S 2nd St	40208	NW (60-65)	2022-09-22 07:44:00	2022-09-20 22:30:00	SDF	Noise At Wrong Time	Investigated	Non-Standard	Weather	Three airplanes came in very low. We do not have air conditioning and it is hot over here, so we have to open our windows. They promised us they would come in from the south when the wind was not blowing. They come in from the north all the time now. Right down through the middle of Old Louisville. They need to keep the promise they made. They are getting lower and lower with bigger airplanes. (Representative of 1 additional comment received within the hour.)	2

1. **Standard:** Indicates the "Most Preferred" runway configuration was being utilized at the time of the comment.
Non-Standard: Indicates that a "Lesser Preferred" runway configuration was being utilized at the time of the comment.
QHP: QuieterHome Program
2. This column is used to indicate the conditions which most likely necessitated a deviation from the standard procedures.
3. Comments may be edited for space, format, or unrelated content.

Comments (SDF/LOU)

September 2022

Street	Zip Code	CNF Quad / 2021 DNL	Time Received	Time	Airport	Disturbance Type	Status	Operation or Comment Type ¹	Deviation Type ²	Comments ³	Number of Contacts
1673 Holsclaw Hill Rd	40109	SW (60-65)	2022-09-21 04:58:00	2022-09-21 04:58:00	SDF	Aircraft Too Low	Investigated	Standard	None	The Dubai plane went over again. He was under 2000'. We have been up since about 3:00 a.m. watching the planes go over and shaking the house. Make them deviate from this. Talk to someone above you and find out. This cannot keep going on.	1
3016 Greenup RD	40217	NE (<60)	2022-09-21 16:26:00	2022-09-21 16:26:00	SDF	Constant Noise	Investigated	Non-Standard	Weather	Why are the UPS bombing raids headed north. This has been going on for more than an hour now. Why is the noise torture headed north when the pathway is to the south. (Representative of 2 additional comments received within the hour.)	3
3016 Greenup RD	40217	NE (<60)	2022-09-21 18:16:00	2022-09-21 18:16:00	SDF	Constant Noise	Investigated	Non-Standard	Weather	Why are the UPS bombing raids still going on? This is 3 hours later. Non-stop, no break in sound, 2 and 3 at a time.	1
7419 York River RD	40214	SW (<60)	2022-09-24 04:44:00	2022-09-24 04:44:00	SDF	Aircraft Off Course	Investigated	Standard	None	I was woke up early this morning from west bound flight on the west runway. UPS jets every 2 minutes banking and turning wsw. We are also getting them in the afternoon.	1
3016 Greenup RD	40217	NE (<60)	2022-09-25 12:02:00	2022-09-25 12:02:00	SDF	Over Use of Runway	Investigated	Standard	None	It is Sunday why are the UPS bombing raids going on? They have been going non-stop to and from the north for 2 hours now.	1
3016 Greenup RD	40217	NE (<60)	2022-09-25 17:50:00	2022-09-25 17:50:00	SDF	Constant Noise	Investigated	Non-Standard	Weather	It is almost 6:00 p.m. and those UPS planes have been flying non-stop for 8 hours on a Sunday. What in the hell is wrong with you? Do something about it. That is your job noise man.	1

1. **Standard:** Indicates the "Most Preferred" runway configuration was being utilized at the time of the comment.
Non-Standard: Indicates that a "Lesser Preferred" runway configuration was being utilized at the time of the comment.
QHP: QuieterHome Program
2. This column is used to indicate the conditions which most likely necessitated a deviation from the standard procedures.
3. Comments may be edited for space, format, or unrelated content.

Comments (SDF/LOU)

September 2022

Street	Zip Code	CNF Quad / 2021 DNL	Time Received	Time	Airport	Disturbance Type	Status	Operation or Comment Type ¹	Deviation Type ²	Comments ³	Number of Contacts
3016 Greenup RD	40217	NE (<60)	2022-09-26 15:38:00	2022-09-26 15:38:00	SDF	Noise At Wrong Time	Investigated	Non-Standard	Weather	Why are the UPS bombing raids going on again? Every day all day long, non-stop. Why are they coming this way. Did you ask UPS if any of the planes they are buying are quiet planes they promised to buy 20 years ago? (Representative of 3 additional comments received within the hour.)	4
3016 Greenup RD	40217	NE (<60)	2022-09-26 16:05:00	2022-09-26 16:05:00	SDF	Over Use of Runway	Investigated	Non-Standard	Weather	The non-stop UPS torture continues. Why aren't you doing anything about it. They are flying north. (Representative of 3 additional comments received within the hour.)	4
3016 Greenup RD	40217	NE (<60)	2022-09-26 18:35:00	2022-09-26 18:35:00	SDF	Over Use of Runway	Investigated	Non-Standard	Weather	3 hours later and the non-stop UPS bombing raids are still going.	1
3016 Greenup RD	40217	NE (<60)	2022-09-26 19:28:00	2022-09-26 19:28:00	SDF	Too Much Noise	Investigated	Non-Standard	Weather	4 and half hours later and the horrible UPS is still torturing the city non-stop.	1
3016 Greenup RD	40217	NE (<60)	2022-09-26 20:18:00	2022-09-26 20:18:00	SDF	Too Much Noise	Investigated	Non-Standard	Weather	OMG it is almost 8:30 p.m. and the UPS bombing raids are still going. Does that sound reasonable to you. If they ever stop now, they are going to start up again in 2 hours.	1

1. **Standard:** Indicates the "Most Preferred" runway configuration was being utilized at the time of the comment.
Non-Standard: Indicates that a "Lesser Preferred" runway configuration was being utilized at the time of the comment.
QHP: QuieterHome Program
2. This column is used to indicate the conditions which most likely necessitated a deviation from the standard procedures.
3. Comments may be edited for space, format, or unrelated content.

Comments (SDF/LOU)

September 2022

Street	Zip Code	CNF Quad / 2021 DNL	Time Received	Time	Airport	Disturbance Type	Status	Operation or Comment Type ¹	Deviation Type ²	Comments ³	Number of Contacts
1054 Ardmore Dr	40217	NE (<60)	2022-09-27 17:15:00	2022-09-27 03:00:00	SDF	Constant Noise	Investigated	Non-Standard	Weather	I am calling to complain about the planes and why we are not under the QuieterHome Program. They woke me up at 3:00 a.m. this morning and they are still going. I gave up trying to sleep and I cannot hear my TV during the day. I just can't understand why we are not in the program. It is ridiculous over here.	1
3016 Greenup RD	40217	NE (<60)	2022-09-27 07:12:00	2022-09-27 07:12:00	SDF	Over Use of Runway	Investigated	Non-Standard	None	The UPS bombing raids are still going. They started at 3:00 p.m. yesterday.	1
3016 Greenup RD	40217	NE (<60)	2022-09-27 17:15:00	2022-09-27 17:15:00	SDF	Over Use of Runway	Investigated	Non-Standard	Weather	The UPS bombing raids are roaring non-stop. They have just been roaring for 36 hours straight now. What is going on? How about you find that out. Why are they flying 36 hours straight to the north?	1
3016 Greenup RD	40217	NE (<60)	2022-09-27 19:03:00	2022-09-27 19:03:00	SDF	Over Use of Runway	Investigated	Non-Standard	Weather	My God, those UPS bombing raids are still going on. It is 7:00 p.m. and they are still going. They have been going non-stop since 3:00 p.m. yesterday. Do you not think that is over the top? Who is letting UPS do whatever they want. Give it a rest. They are torturing this neighborhood, and they are torturing this city. Back it off. Do more than ask a few stupid dopy questions.	1
7419 York River RD	40214	SW (<60)	2022-09-28 04:56:00	2022-09-28 04:56:00	SDF	Aircraft Off Course	Investigated	Standard	None	Woke up this morning again with UPS flights taking off from the west runway heading south, banking, and turning. Flying over top of the house. I have already gotten texts from others in the neighborhood this morning.	1

1. **Standard:** Indicates the "Most Preferred" runway configuration was being utilized at the time of the comment.
Non-Standard: Indicates that a "Lesser Preferred" runway configuration was being utilized at the time of the comment.
QHP: QuieterHome Program
2. This column is used to indicate the conditions which most likely necessitated a deviation from the standard procedures.
3. Comments may be edited for space, format, or unrelated content.

Comments (SDF/LOU)

September 2022

Street	Zip Code	CNF Quad / 2021 DNL	Time Received	Time	Airport	Disturbance Type	Status	Operation or Comment Type ¹	Deviation Type ²	Comments ³	Number of Contacts
3016 Greenup RD	40217	NE (<60)	2022-09-28 15:26:00	2022-09-28 15:26:00	SDF	Noise At Wrong Time	Investigated	Non-Standard	Weather	Why are the UPS bombing raids going on again? We have had 30 hours of non-stop UPS bombing raids. Why are they flying north? (Representative of 1 additional comment received within the hour.)	2
3016 Greenup RD	40217	NE (<60)	2022-09-28 16:06:00	2022-09-28 16:06:00	SDF	Constant Noise	Investigated	Standard	None	The UPS bombing raids are still going. There has not been a break in an hour and a half. Do something about it. Your job is to make it better, not worse. (Representative of 4 additional comments received within the hour.)	5
3016 Greenup RD	40217	NE (<60)	2022-09-28 17:46:00	2022-09-28 17:46:00	SDF	Constant Noise	Investigated	Standard	None	The non-stop UPS bombing raids are still going non-stop 3 hours later and it is not over. Fix it. It is your job.	1
3016 Greenup RD	40217	NE (<60)	2022-09-28 18:04:00	2022-09-28 18:04:00	SDF	Over Use of Runway	Investigated	Non-Standard	Weather	It is more than 3 hours later and the UPS bombing raids are still going non-stop to the north. Why are they flying 24/7 to the north. Make them do it. (Representative of 3 additional comments received within the hour.)	4

1. **Standard:** Indicates the “Most Preferred” runway configuration was being utilized at the time of the comment.
Non-Standard: Indicates that a “Lesser Preferred” runway configuration was being utilized at the time of the comment.
QHP: QuieterHome Program
2. This column is used to indicate the conditions which most likely necessitated a deviation from the standard procedures.
3. Comments may be edited for space, format, or unrelated content.

Comments (SDF/LOU)

September 2022

Street	Zip Code	CNF Quad / 2021 DNL	Time Received	Time	Airport	Disturbance Type	Status	Operation or Comment Type ¹	Deviation Type ²	Comments ³	Number of Contacts
505 Forum AV	40214	SW (<60)	2022-09-29 09:15:00	2022-09-29 03:15:00	SDF	Noise At Wrong Time	Investigated	Standard	None	I have not talked to you for a few years, but I have not gone away. Just wanted to let you know that UPS woke me up at about 3:15 a.m. this morning and continued until about 5:30 a.m. It was pretty loud last night. It is kind of a joke when the news has people complaining about noise from a concert that ends at 11:30 p.m. and UPS can get by with what they get by with. We know that you are not going to anything about it because it is UPS, and the news will not touch it with a 10-foot pole. I can't believe that you still have a job. Do you need an assistant? When are you going to soundproof my house? That is another joke.	1
7419 York River RD	40214	SW (<60)	2022-09-29 04:36:00	2022-09-29 04:36:00	SDF	Too Much Noise	Investigated	Standard	None	It is getting worse. It seems they are taking off earlier. Banking as soon as they takeoff. We need to find a solution.	1
3016 Greenup RD	40217	NE (<60)	2022-09-29 17:12:00	2022-09-29 17:12:00	SDF	Constant Noise	Investigated	Non-Standard	Weather	Why are the UPS bombing raids going on again. It is every day non-stop. Why? (Representative of 1 additional comment received within the hour.)	2
3016 Greenup RD	40217	NE (<60)	2022-09-29 18:21:00	2022-09-29 18:21:00	SDF	Constant Noise	Investigated	Non-Standard	Weather	The UPS bombing raids are still going non-stop. An hour and half later the horrible UPS bombing raids are still going on. They have been going non-stop for the past 10 days. Why are they going north? Do your job. (Representative of 1 additional comment received within the hour.)	2

1. **Standard:** Indicates the "Most Preferred" runway configuration was being utilized at the time of the comment.
Non-Standard: Indicates that a "Lesser Preferred" runway configuration was being utilized at the time of the comment.
QHP: QuieterHome Program
2. This column is used to indicate the conditions which most likely necessitated a deviation from the standard procedures.
3. Comments may be edited for space, format, or unrelated content.

Comments (SDF/LOU)

September 2022

Street	Zip Code	CNF Quad / 2021 DNL	Time Received	Time	Airport	Disturbance Type	Status	Operation or Comment Type ¹	Deviation Type ²	Comments ³	Number of Contacts
7419 York River RD	40214	SW (<60)	2022-09-30 04:37:00	2022-09-30 04:37:00	SDF	Aircraft Off Course	Investigated	Standard	None	Woke up early again this morning the planes are coming over every 2 minutes. Watching flight tracker because I can't sleep. The MD-11's are turning halfway up the runway. They are the loudest, based on decibel levels in my bedroom.	1
7419 York River RD	40214	SW (<60)	2022-09-30 05:27:00	2022-09-30 05:27:00	SDF	Aircraft Off Course	Investigated	Standard	None	One really loud jet took off at 5:20 a.m. and buzzed our house. It is pretty bad. I looked on flight tracker and as soon as he lifted off, he banked and turned. That put him right over top of our house. This has got to stop.	1
3016 Greenup RD	40217	NE (<60)	2022-09-30 14:33:00	2022-09-30 14:33:00	SDF	Over Use of Runway	Investigated	Non-Standard	Weather	The bombing raids are going on again. Every day to the north. Why are they doing that? Your job is to control the noise why don't you do it.	1
3016 Greenup RD	40217	NE (<60)	2022-09-30 17:11:00	2022-09-30 17:11:00	SDF	Over Use of Runway	Investigated	Non-Standard	Weather	The UPS bombing raids are going on again. I am sitting here watching non-stop hideous UPS bombing raids. Why are they going on again? Their pathway is to the south. It is every day.	1
									Received	LRAA	74

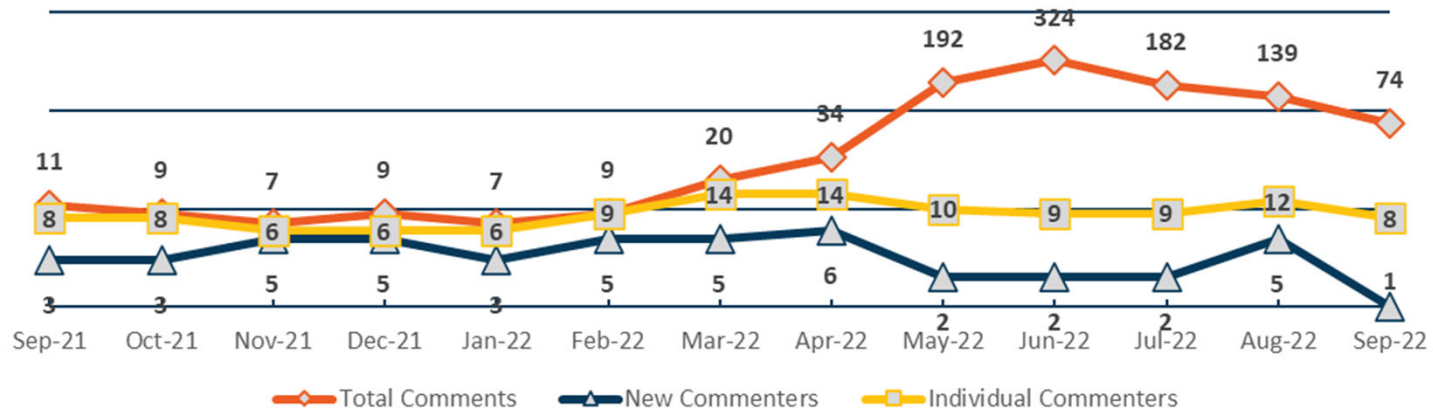
1. **Standard:** Indicates the "Most Preferred" runway configuration was being utilized at the time of the comment.
Non-Standard: Indicates that a "Lesser Preferred" runway configuration was being utilized at the time of the comment.
QHP: QuieterHome Program
2. This column is used to indicate the conditions which most likely necessitated a deviation from the standard procedures.
3. Comments may be edited for space, format, or unrelated content.

Comment Location (SDF/LOU)

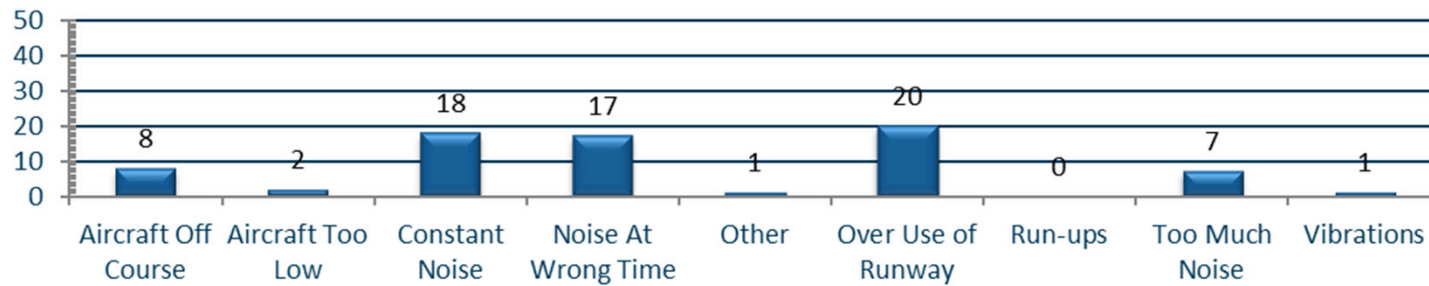
September 2022



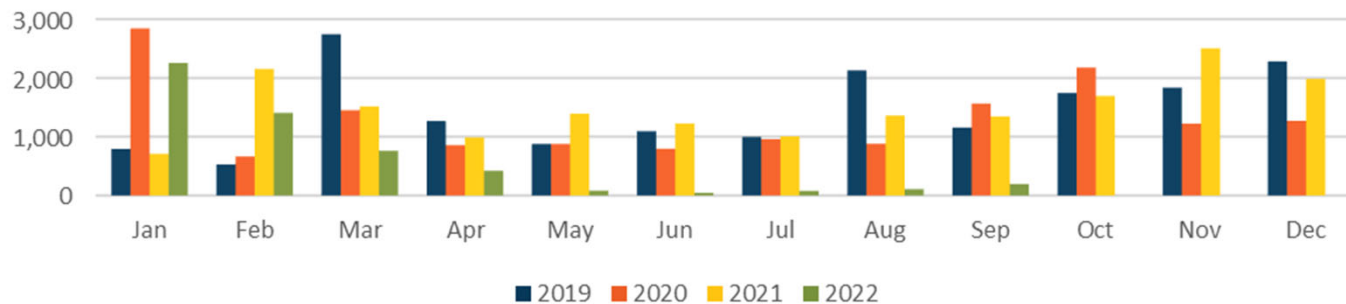
Total, New, and Individual Comments (SDF/LOU)



Comment Type (SDF and LOU) September 2022



Operations Per Complaint (SDF)



NOISE COMMENT REPORT

LOUISVILLE REGIONAL AIRPORT AUTHORITY



October 2022

Comments (SDF/LOU)

October 2022

Street	Zip Code	CNF Quad / 2021 DNL	Time Received	Time	Airport	Disturbance Type	Status	Operation or Comment Type ¹	Deviation Type ²	Comments ³	Number of Contacts
Greenup RD	40217	NE (<60)	2022-10-01 08:42:00	2022-10-01 08:42:00	SDF	Noise At Wrong Time	Investigated	Non-Standard	Weather	The Saturday morning starts off with non-stop UPS bombing raids.	1
Greenup RD	40217	NE (<60)	2022-10-02 15:24:00	2022-10-02 15:24:00	SDF	Noise At Wrong Time	Investigated	Non-Standard	Weather	Why are the UPS bombing raids going on a Sunday. Why cant this city have a break from UPS on a Sunday. Who gave UPS the go ahead to go 24/7.	1
Greenup RD	40217	NE (<60)	2022-10-02 16:10:00	2022-10-02 16:10:00	SDF	Noise At Wrong Time	Investigated	Non-Standard	Weather	The UPS bombing raids are still going non-stop on a Sunday. Why is UPS torturing this city on a Sunday. Who gave UPS the go ahead to do whatever they want. Find it out, it is part of your job. (Representative of 7 additional comments received within the hour.)	8
Wetterau Ave	40217	NE (<60)	2022-10-03 12:16:00	2022-10-03 05:00:00	SDF	Noise At Wrong Time	Investigated	Non-Standard	Weather	I wanted to complain about the loud airplanes that fly over our house really early in the morning and keep us from sleeping.	1
Seneca Dr	40205	N/A	2022-10-03 14:28:00	2022-10-03 14:28:00	LOU	Aircraft Off Course	Investigated	Standard	None	I was hoping that the helicopters after last weekend would not be flying circles over our house today. The noise has gotten to be a whole lot and I was just wandering when it was going to die down or stop. Is there anything a citizen can do to get there to be less helicopter noise around here?	1
Greenup RD	40217	NE (<60)	2022-10-03 15:46:00	2022-10-03 15:46:00	SDF	Over Use of Runway	Investigated	Non-Standard	Weather	Why are the UPS bombing raids flying to the north? They flew all night long non-stop to and from the north. You are just making things worse.	1

1. **Standard:** Indicates the “Most Preferred” runway configuration was being utilized at the time of the comment.
Non-Standard: Indicates that a “Lesser Preferred” runway configuration was being utilized at the time of the comment.
QHP: QuieterHome Program
2. This column is used to indicate the conditions which most likely necessitated a deviation from the standard procedures.
3. Comments may be edited for space, format, or unrelated content.

Comments (SDF/LOU)

October 2022

Street	Zip Code	CNF Quad / 2021 DNL	Time Received	Time	Airport	Disturbance Type	Status	Operation or Comment Type ¹	Deviation Type ²	Comments ³	Number of Contacts
Greenup RD	40217	NE (<60)	2022-10-03 16:25:00	2022-10-03 16:25:00	SDF	Over Use of Runway	Investigated	Non-Standard	Weather	Guess what is going on right now? UPS bombing raids. They are still going non-stop to the north. They have been roaring all day every day until 6 or 8:00 p.m. Why aren't you doing something about it?	1
Greenup RD	40217	NE (<60)	2022-10-03 18:11:00	2022-10-03 18:11:00	SDF	Too Much Noise	Investigated	Non-Standard	Weather	It is 6:00 p.m. and the non-stop bombing raids are still going. I went to Cherokee Park today and you could still hear the bombing raids up there.	1
Greenup RD	40217	NE (<60)	2022-10-03 19:25:00	2022-10-03 19:25:00	SDF	Over Use of Runway	Investigated	Non-Standard	Weather	It is almost 7:30 p.m. and guess what is still going? Non-stop UPS bombing raids are still going. We cannot even get a few seconds of quite on a nice night. Fix it, and if UPS has to draw back on operations, then fine. Maybe they can do it from Dallas. (Representative of 1 additional comment received within the hour.)	2
York River RD	40214	SW (<60)	2022-10-04 17:21:00	2022-10-04 17:21:00	SDF	Over Use of Runway	Investigated	Standard	None	This evening has been really horrible. I don't know what is going on. It has not always been like this. I have lived here for 30 years. The planes have gotten bigger, and things have changed. It is not Fort Knox, it is not the excuse that the other runway has closed, because about 8 to 1 are going off the west runway. Some of these are even turning east. I don't get it. Are you just trying to pad your numbers for the other neighborhoods? It sure does look like it. I am not buying what you are selling.	1

1. **Standard:** Indicates the "Most Preferred" runway configuration was being utilized at the time of the comment.
Non-Standard: Indicates that a "Lesser Preferred" runway configuration was being utilized at the time of the comment.
QHP: QuieterHome Program
2. This column is used to indicate the conditions which most likely necessitated a deviation from the standard procedures.
3. Comments may be edited for space, format, or unrelated content.

Comments (SDF/LOU)

October 2022

Street	Zip Code	CNF Quad / 2021 DNL	Time Received	Time	Airport	Disturbance Type	Status	Operation or Comment Type ¹	Deviation Type ²	Comments ³	Number of Contacts
Greenup RD	40217	NE (<60)	2022-10-07 16:39:00	2022-10-07 16:39:00	SDF	Constant Noise	Investigated	Non-Standard	Weather	Why are the UPS bombing raids going on? They have been going non-stop since 4:00 a.m. Why are they flying in any direction for 13 hours non-stop. They need to move some operations to Dallas. (Representative of 1 additional comment received within the hour.)	2
Calvin Ave	40206	NE (<60)	2022-10-08 05:28:00	2022-10-08 05:28:00	SDF	Noise At Wrong Time	Investigated	Non-Standard	Weather	There are a huge number of planes going over my house right now in Crescent Hill. They have been going on for about half an hour now. Very low, very loud. They woke me up from a deep sleep. I've counted at least 15 planes since I've been awake. Can you please check the records and explain to me why the planes are flying over right now? You told me they sometimes do this when the weather is bad, but the weather is definitely not bad right now. After a very long and stressful work week, I was looking forward to some good sleep. But these planes are so incredibly loud that even with all my windows closed and an ambient noise machine, and earplugs I still can't sleep!	1
Greenup RD	40217	NE (<60)	2022-10-08 23:42:00	2022-10-08 23:42:00	SDF	Noise At Wrong Time	Investigated	Standard	None	Why are the UPS bombing going non-stop on a Saturday night. This BS has been going on for 2 hours.	1
Greenup RD	40217	NE (<60)	2022-10-09 10:11:00	2022-10-09 10:11:00	SDF	Noise At Wrong Time	Investigated	Standard	None	Why are the UPS bombing raids going non-stop on a Sunday. This has been going on for 2 hours now. It's Sunday.	1

- Standard:** Indicates the "Most Preferred" runway configuration was being utilized at the time of the comment.
Non-Standard: Indicates that a "Lesser Preferred" runway configuration was being utilized at the time of the comment.
QHP: QuieterHome Program
- This column is used to indicate the conditions which most likely necessitated a deviation from the standard procedures.
- Comments may be edited for space, format, or unrelated content.

Comments (SDF/LOU)

October 2022

Street	Zip Code	CNF Quad / 2021 DNL	Time Received	Time	Airport	Disturbance Type	Status	Operation or Comment Type ¹	Deviation Type ²	Comments ³	Number of Contacts
York River RD	40214	SW (<60)	2022-10-10 17:37:00	2022-10-10 17:37:00	SDF	Aircraft Off Course	Investigated	Standard	None	Plane flew over this afternoon and shook the house. Big difference in takeoffs paths. Time says they were back to back. But then again, "it's been this way for years." Maybe that explains it.	1
Holsclaw Hill Rd	40109	SW (60-65)	2022-10-11 04:41:00	2022-10-11 04:41:00	SDF	Too Much Noise	Investigated	Standard	None	We have 70 decibels inside our house at 4:00 a.m. It is louder than ever.	1
York River RD	40214	SW (<60)	2022-10-11 04:49:00	2022-10-11 04:49:00	SDF	Aircraft Off Course	Investigated	Standard	None	Woke up early this morning with UPS flights taking off the west runway. Cutting the corner really hard. It is not getting better, it is getting worse.	1
York River RD	40214	SW (<60)	2022-10-11 06:54:00	2022-10-11 06:54:00	SDF	Aircraft Off Course	Investigated	Standard	None	Awoken early this morning with UPS takeoff on west runway then banking and turning WSW at takeoff. Some worse than others. You can see that they are turning and banking at takeoff. (Representative of 1 additional comment received within the hour.)	2

1. **Standard:** Indicates the "Most Preferred" runway configuration was being utilized at the time of the comment.
Non-Standard: Indicates that a "Lesser Preferred" runway configuration was being utilized at the time of the comment.
QHP: QuieterHome Program
2. This column is used to indicate the conditions which most likely necessitated a deviation from the standard procedures.
3. Comments may be edited for space, format, or unrelated content.

Comments (SDF/LOU)

October 2022

Street	Zip Code	CNF Quad / 2021 DNL	Time Received	Time	Airport	Disturbance Type	Status	Operation or Comment Type ¹	Deviation Type ²	Comments ³	Number of Contacts
York River RD	40214	SW (<60)	2022-10-12 07:34:00	2022-10-12 03:30:00	SDF	Aircraft Off Course	Investigated	Standard	None	UPS, West runway south departures. Awoken early in the morning again at 3:30 a.m. from UPS banking/turning WSW. Every 1-2 minutes, at least 30-40 flights. These pics are from a jets that took off in the same hour (see time stamp top of pic). The majority bank WSW while trying to gain altitude and are the loudest at over 70 dBs in my bedroom and closest to our neighborhood Yorktown North, at takeoff. They also flew over Fairdale area neighborhoods as well. Several took off straight and low at takeoff. Over the dump and Minors Lane area. These were below 60 dBs in bedroom) and noise level of these flights are ones that I believe we can live with as they depart over a dump and areas where the neighborhoods Minors Lane, and South Park View that were bought out for the noise. But the majority 80-90% do not depart and fly over them. One west runway departure even banked ESE. I did not hear this one at all and it was a 747. You talk about jet wash! So based upon what you told me Bob the plane that banked east must have broken the law because you said southbound contra is the FAA law. It's not it's the local board recommendations. I encourage everyone to read the Part 150 NCP. So, I have checked the excuse boxes as well for today.	1

1. **Standard:** Indicates the "Most Preferred" runway configuration was being utilized at the time of the comment.
Non-Standard: Indicates that a "Lesser Preferred" runway configuration was being utilized at the time of the comment.
QHP: QuieterHome Program
2. This column is used to indicate the conditions which most likely necessitated a deviation from the standard procedures.
3. Comments may be edited for space, format, or unrelated content.

Comments (SDF/LOU)

October 2022

Street	Zip Code	CNF Quad / 2021 DNL	Time Received	Time	Airport	Disturbance Type	Status	Operation or Comment Type ¹	Deviation Type ²	Comments ³	Number of Contacts
York River Rd	40214	SW	2022-10-13 10:15:00	2022-10-13 03:00:00	SDF	Aircraft Off Course	Investigated	Standard	None	Good morning Bob, I am President of Yorktown North Maintenance Association. Last night was awful with noise coming from planes going directly over my house again. I have received several complaints from my side of the neighborhood. Coming directly over our houses from 3:00 a.m. to 5:00 a.m. This does not happen from every plane. Its hit and miss. I have plenty of loud video to prove they are coming directly over our houses. Some just a few feet over treetops.	1
Calvin Ave	40206	NE (<60)	2022-10-13 06:15:00	2022-10-13 03:15:00	SDF	Too Much Noise	Investigated	Non-Standard	Weather	There are very loud planes going over my house right now in Crescent Hill. They have been going on for about three hours now. Flying very low, and very loud. They woke me up from a deep sleep. I have counted at least 50 planes since I've been awake. Can you please check the records and explain to me why the planes are taking of over my house right now? I was exhausted last night and looking forward to some rest. However, these planes are so incredibly loud that even with all my windows closed and a white noise machine, and earplugs I still cannot sleep! I live very far from the airport. I should not have to deal with this extreme plane noise. It is not just one plane now and then, it's hours of intense noise, with a plane every minute for hours at a time.	1

1. **Standard:** Indicates the “Most Preferred” runway configuration was being utilized at the time of the comment.
Non-Standard: Indicates that a “Lesser Preferred” runway configuration was being utilized at the time of the comment.
QHP: QuieterHome Program
2. This column is used to indicate the conditions which most likely necessitated a deviation from the standard procedures.
3. Comments may be edited for space, format, or unrelated content.

Comments (SDF/LOU)

October 2022

Street	Zip Code	CNF Quad / 2021 DNL	Time Received	Time	Airport	Disturbance Type	Status	Operation or Comment Type ¹	Deviation Type ²	Comments ³	Number of Contacts
York River RD	40214	SW (<60)	2022-10-13 08:06:00	2022-10-13 03:30:00	SDF	Other	Investigated	Standard	None	So, this morning I was awoken at 3:30 a.m. again. The reason is UPS planes departing from west runway south (see pics) banking turning WSW. As I was monitoring others, I notice that the runway flipped and all UPS taxied to take off north around 5:00 a.m. on both runways which is good thing for me but I was already up the damage of another day of no sleep had been done. With that being said the main question I have is; Can we contact the residence of Parkway Village and UofL area residence that have the noise installation abatement windows and new AC to see if it woke them or they experienced a higher level of noise during this period this morning (between 5-7 a.m.)? Since you said we do not do noise level studies this would be a good way to see if noise installation works or does not work during takeoffs and if it really helps or not. No since in wasting time and money on windows and noise installation if there is no improvement and spend it elsewhere for other solutions. I know it was the weather (winds from the north) that caused them to flip the runway this morning, that is not my question. (Representative of 1 additional comment received within the hour.)	2
Holsclaw Hill Rd	40109	SW (60-65)	2022-10-13 04:26:00	2022-10-13 04:26:00	SDF	Aircraft Too Low	Investigated	Standard	None	We are all awake. 65 decibels inside our house. Call me when you get a chance. Got to get this noise down.	1

1. **Standard:** Indicates the “Most Preferred” runway configuration was being utilized at the time of the comment.
Non-Standard: Indicates that a “Lesser Preferred” runway configuration was being utilized at the time of the comment.
QHP: QuieterHome Program
2. This column is used to indicate the conditions which most likely necessitated a deviation from the standard procedures.
3. Comments may be edited for space, format, or unrelated content.

Comments (SDF/LOU)

October 2022

Street	Zip Code	CNF Quad / 2021 DNL	Time Received	Time	Airport	Disturbance Type	Status	Operation or Comment Type ¹	Deviation Type ²	Comments ³	Number of Contacts
Greenup RD	40217	NE (<60)	2022-10-15 11:42:00	2022-10-15 11:42:00	SDF	Over Use of Runway	Investigated	Standard	None	Why are the UPS bombing raids going non-stop on a Saturday morning. It is just one right after the other. All to the north when they should be going to the south. Do not lie about it Bob. Find out what they are doing and do not lie.	1
Taylorsville Rd	40299	SE (<60)	2022-10-16 10:05:00	2022-10-16 10:05:00	SDF	Aircraft Off Course	Investigated	Standard	None	I live off Taylorsville Road. There is a little airplane that keeps going over and back over and back. I would like for him to move over towards Simpsonville or someplace else.	1
Kings Hwy	40205	N/A	2022-10-16 13:29:00	2022-10-16 13:29:00	LOU	Over Use of Runway	Investigated	Standard	None	I am seeing if you can check with the tower to see if on Saturdays or Sundays a different runway other than runway 90 could be utilized. There are planes flying directly over our house every 30 seconds to 1 minute constantly throughout the day. It is hard to enjoy the day outside or inside with this constant noise level.	1
Greenup RD	40217	NE (<60)	2022-10-16 16:20:00	2022-10-16 16:20:00	SDF	Noise At Wrong Time	Investigated	Non-Standard	None	Why is UPS roaring on a Sunday. Why are the UPS bombing raids going non-stop on a Sunday? Why are they flying on a Sunday at all? Why are they flying north? They have been flying north non-stop for the last several days. Don't tell me wind, it is not true, and you know it. Go do your job and fix the problem. You cannot enjoy this nice weather or sit out in your backyard because UPS is roaring non-stop. (Representative of 5 additional comments received within the hour.)	6

1. **Standard:** Indicates the "Most Preferred" runway configuration was being utilized at the time of the comment.
Non-Standard: Indicates that a "Lesser Preferred" runway configuration was being utilized at the time of the comment.
QHP: QuieterHome Program
2. This column is used to indicate the conditions which most likely necessitated a deviation from the standard procedures.
3. Comments may be edited for space, format, or unrelated content.

Comments (SDF/LOU)

October 2022

Street	Zip Code	CNF Quad / 2021 DNL	Time Received	Time	Airport	Disturbance Type	Status	Operation or Comment Type ¹	Deviation Type ²	Comments ³	Number of Contacts
Greenup RD	40217	NE (<60)	2022-10-16 17:02:00	2022-10-16 17:02:00	SDF	Too Much Noise	Investigated	Non-Standard	None	I swear the UPS bombing raids are so damn loud. That they drown out the music that I am listening to on my phone. I have earbuds in and they are drowning out that music. That is how loud they are. That is what people around here have to put up with. (Representative of 14 additional comments received within the hour.)	15
Parkway Dr	40217	NE (<60)	2022-10-16 17:16:00	2022-10-16 17:16:00	SDF	Vibrations	Investigated	Non-Standard	None	I am calling to complain about the UPS jets that have been flying over my house constantly for the past 2 1/2 hours. It rattles the pictures on the wall and just rattles everything. The UPS planes, the private jets, the military and just everything is flying directly over the top of our houses. I thought they were supposed to stay down at the other end of Preston. I am really just sick of it.	1
Greenup RD	40217	NE (<60)	2022-10-16 18:09:00	2022-10-16 18:09:00	SDF	Noise At Wrong Time	Investigated	Non-Standard	None	Do you hear that Bob? Guess what it is Bob. It is another UPS plane. The horrible non-stop UPS bombing raids are still going non-stop. It is now past 6:00 p.m. (Representative of 4 additional comments received within the hour.)	5

1. **Standard:** Indicates the “Most Preferred” runway configuration was being utilized at the time of the comment.
Non-Standard: Indicates that a “Lesser Preferred” runway configuration was being utilized at the time of the comment.
QHP: QuieterHome Program
2. This column is used to indicate the conditions which most likely necessitated a deviation from the standard procedures.
3. Comments may be edited for space, format, or unrelated content.

Comments (SDF/LOU)

October 2022

Street	Zip Code	CNF Quad / 2021 DNL	Time Received	Time	Airport	Disturbance Type	Status	Operation or Comment Type ¹	Deviation Type ²	Comments ³	Number of Contacts
E Burnett Ave	40217	NW (60-65)	2022-10-18 09:41:00	2022-10-16 20:35:00	SDF	Too Much Noise	Investigated	Standard	None	In my area we have long been the stepchild when it comes to getting any relief from the airport noise. Today Sunday 10-16-2022 I have monitored the Decibel levels as UPS planes took off over my house one right after another, with decibel levels sometimes in the low 80's. Now tonight the planes are landing in this direction, and I get ready for an onslaught of UPS planes arriving. The UPS planes come in for a landing lower than any of the commercial planes. There are times when I feel that I could stand on the roof of my house and touch the planes as they go over. The planes go directly over the top of my house. I know for a fact that there has been noise abatement in nearby areas that the planes do not go over. I went to a previous meeting about this issue and heard the normal diversions. Come sit in front of my house for a day and night and experience it for yourself. But stop giving us the run around. I thought the airport expansion was supposed to direct most air traffic over less populated area. But it is only getting worse where I live. I deserve a little bit of peace in my own home.	1
Greenup RD	40217	NE (<60)	2022-10-16 20:43:00	2022-10-16 20:43:00	SDF	Constant Noise	Investigated	Standard	None	The UPS bombing raids are still going on. It is almost 9:00 p.m. that is almost 13 hours.	1

1. **Standard:** Indicates the “Most Preferred” runway configuration was being utilized at the time of the comment.
Non-Standard: Indicates that a “Lesser Preferred” runway configuration was being utilized at the time of the comment.
QHP: QuieterHome Program
2. This column is used to indicate the conditions which most likely necessitated a deviation from the standard procedures.
3. Comments may be edited for space, format, or unrelated content.

Comments (SDF/LOU)

October 2022

Street	Zip Code	CNF Quad / 2021 DNL	Time Received	Time	Airport	Disturbance Type	Status	Operation or Comment Type ¹	Deviation Type ²	Comments ³	Number of Contacts
Greenup RD	40217	NE (<60)	2022-10-16 21:56:00	2022-10-16 21:56:00	SDF	Too Much Noise	Investigated	Standard	None	It is 10:00 p.m. and the UPS bombing raids are still going. From 8:00 a.m. until 10:00 p.m. They should not be flying on a Sunday at all. Seriously, you think this is ok?	1
Greenup RD	40217	NE (<60)	2022-10-17 07:08:00	2022-10-17 07:08:00	SDF	Noise At Wrong Time	Investigated	Non-Standard	Weather	The UPS bombing raids were roaring for 14 hours yesterday. They roared throughout the night and now they are roaring again. Started again at 7:00 a.m. this morning. Do your job. (Representative of 1 additional comment received within the hour.)	2
N Barbee Way	40217	NW	2022-10-18 10:24:00	2022-10-17 10:02:00	SDF	Too Much Noise	Investigated	Standard	None	I have had airplane noise since I bought my house this summer, but it has been especially bad this past week or so. I can hear it over my TV with all windows closed. I was woken last Thursday or Friday at about 5 a.m. with loud planes that did not stop for about 20 minutes. This morning I was woken out of deep sleep by an especially loud plane (sounded low and fast, but also had a whistle to it) then while trying to fall back asleep there were another 3 or 4 loud planes every additional 5 minutes or so. Has the airplane routes or altitudes changed? Is it the weather? Is there assistance for my house to be sound dampened or for the airplane routes or altitudes to be altered?	1

1. **Standard:** Indicates the “Most Preferred” runway configuration was being utilized at the time of the comment.
Non-Standard: Indicates that a “Lesser Preferred” runway configuration was being utilized at the time of the comment.
QHP: QuieterHome Program
2. This column is used to indicate the conditions which most likely necessitated a deviation from the standard procedures.
3. Comments may be edited for space, format, or unrelated content.

Comments (SDF/LOU)

October 2022

Street	Zip Code	CNF Quad / 2021 DNL	Time Received	Time	Airport	Disturbance Type	Status	Operation or Comment Type ¹	Deviation Type ²	Comments ³	Number of Contacts
Greenup RD	40217	NE (<60)	2022-10-17 18:14:00	2022-10-17 18:14:00	SDF	Too Much Noise	Investigated	Non-Standard	Weather	Why are the UPS bombing raids still going on?	1
Balmoral Dr	40205	N/A	2022-10-18 14:57:00	2022-10-18 14:57:00	LOU	Other	Investigated	Standard	None	I live near Bowman Field. Is there a state or FAA rule on how loud an aircraft can be, or a limit on how many jets are allowed at Bowman? The jets, in particular, are very loud. How do I complain to the FAA, if there is such a rule?	1
Greenup RD	40217	NE (<60)	2022-10-18 17:46:00	2022-10-18 17:46:00	SDF	Over Use of Runway	Investigated	Non-Standard	Weather	Guess what is going on? Not just UPS bombing raids but double UPS bombing raids. UPS is taking off 2 at a time. Going on every day for the past month. Find out why they are going north and make them stop. Do you understand the difference between increase and decrease? Do your job. (Representative of 1 additional comment received within the hour.)	2
Greenup RD	40217	NE (<60)	2022-10-19 16:53:00	2022-10-19 16:53:00	SDF	Over Use of Runway	Investigated	Non-Standard	Weather	Why are the bombing raids flying to the north? They have been flying non-stop to the north for 3 hours now. Their pathway is to the south.	1
York River RD	40214	SW (<60)	2022-10-21 04:48:00	2022-10-21 04:48:00	SDF	Aircraft Off Course	Investigated	Standard	None	They are really loud this morning. It started about 3:00 a.m. I cannot go back to sleep so I'm just going to get up and go to work. Yesterday was better than today. It is only some of them.	1

1. **Standard:** Indicates the “Most Preferred” runway configuration was being utilized at the time of the comment.
Non-Standard: Indicates that a “Lesser Preferred” runway configuration was being utilized at the time of the comment.
QHP: QuieterHome Program
2. This column is used to indicate the conditions which most likely necessitated a deviation from the standard procedures.
3. Comments may be edited for space, format, or unrelated content.

Comments (SDF/LOU)

October 2022

Street	Zip Code	CNF Quad / 2021 DNL	Time Received	Time	Airport	Disturbance Type	Status	Operation or Comment Type ¹	Deviation Type ²	Comments ³	Number of Contacts
Greenup RD	40217	NE (<60)	2022-10-21 09:31:00	2022-10-21 09:31:00	SDF	Constant Noise	Investigated	Non-Standard	Weather	Why are the UPS bombing raids going on? They went on all night long non-stop. The sound was just constant all night long. They are always flying north. Why is that? It is not wind. Get the real answer and we know that it is that UPS does what they want to do.	1
Greenup RD	40217	NE (<60)	2022-10-21 10:33:00	2022-10-21 10:33:00	SDF	Constant Noise	Investigated	Non-Standard	Weather	The UPS bombing raids are still going non-stop. An hour and a half later they are still going non-stop. They went on all night last night. It is endless torture.	1
Greenup RD	40217	NE (<60)	2022-10-21 11:06:00	2022-10-21 11:06:00	SDF	Constant Noise	Investigated	Non-Standard	Weather	Why are the bombing raids still going? It has been more than 2 hours. After it went on all night.	1
Greenup RD	40217	NE (<60)	2022-10-21 12:54:00	2022-10-21 12:54:00	SDF	Over Use of Runway	Investigated	Non-Standard	Weather	Four hours later and the non-stop UPS bombing raids are still going on. They went on all night. We had an hour break and then they started back up again. You are supposed to be doing something about this. Do your job. UPS is supposed to be flying to the south. (Representative of 2 additional comments received within the hour.)	3
Greenup RD	40217	NE (<60)	2022-10-21 13:01:00	2022-10-21 13:01:00	SDF	Constant Noise	Investigated	Non-Standard	Weather	Here comes another UPS plane. Just a second and a half behind the other one. Endlessly for hours at a time. (Representative of 10 additional comments received within the hour.)	11

1. **Standard:** Indicates the "Most Preferred" runway configuration was being utilized at the time of the comment.
Non-Standard: Indicates that a "Lesser Preferred" runway configuration was being utilized at the time of the comment.
QHP: QuieterHome Program
2. This column is used to indicate the conditions which most likely necessitated a deviation from the standard procedures.
3. Comments may be edited for space, format, or unrelated content.

Comments (SDF/LOU)

October 2022

Street	Zip Code	CNF Quad / 2021 DNL	Time Received	Time	Airport	Disturbance Type	Status	Operation or Comment Type ¹	Deviation Type ²	Comments ³	Number of Contacts
Greenup RD	40217	NE (<60)	2022-10-21 23:28:00	2022-10-21 23:28:00	SDF	Constant Noise	Investigated	Non-Standard	Weather	The UPS bombing raids are going on again. You get 1 or 2 hours off and then they come back. This will be going on all night. (Representative of 1 additional comment received within the hour.)	2
Greenup RD	40217	NE (<60)	2022-10-22 22:13:00	2022-10-22 22:13:00	SDF	Noise At Wrong Time	Investigated	Standard	None	It is 10:00 p.m. on Saturday night and the UPS bombing raids have been going on for at least an hour.	1
Greenup RD	40217	NE (<60)	2022-10-23 09:17:00	2022-10-23 09:17:00	SDF	Noise At Wrong Time	Investigated	Non-Standard	Weather	Why are the UPS bombing raids flying on a Sunday? They have been going non-stop since about 7:00 this morning. People would like to sleep in on a weekend. Why does this go on endlessly? Do something about this, it is your job.	1
Greenup RD	40217	NE (<60)	2022-10-24 23:08:00	2022-10-24 23:08:00	SDF	Over Use of Runway	Investigated	Non-Standard	Weather	The UPS bombing raids have been going non-stop for over an hour now. Why are they flying in from the north.	1
York River RD	40214	SW (<60)	2022-10-25 05:47:00	2022-10-25 05:47:00	SDF	Vibrations	Investigated	Standard	None	Seems like it is getting worse. Like this 747 that shook the house. They are taking off earlier down runway (as you can see by the white turned yellow on runway) and trying to reach altitude while banking and turning WSW. This just elevates the noise level and the duration of noise close to Yorktown North and my house.	1

1. **Standard:** Indicates the "Most Preferred" runway configuration was being utilized at the time of the comment.
Non-Standard: Indicates that a "Lesser Preferred" runway configuration was being utilized at the time of the comment.
QHP: QuieterHome Program
2. This column is used to indicate the conditions which most likely necessitated a deviation from the standard procedures.
3. Comments may be edited for space, format, or unrelated content.

Comments (SDF/LOU)

October 2022

Street	Zip Code	CNF Quad / 2021 DNL	Time Received	Time	Airport	Disturbance Type	Status	Operation or Comment Type ¹	Deviation Type ²	Comments ³	Number of Contacts
York River RD	40214	SW (<60)	2022-10-26 02:26:00	2022-10-26 02:26:00	SDF	Aircraft Off Course	Investigated	Standard	None	Started at 2:00 a.m. this morning. We were awoken early. UPS west runway departing south, banking, and turning early at takeoff. No takeoffs from east runway. Why not? Just fly straight parallel to runway then bank till out of Jefferson County then bank. It's all about UPS as I have said before. Cost save and a violation of city sound ordinance and a threat to public health and safety at 2:00 a.m. This is causing me to lose sleep and causing health issues because of it.	1
Samuel St	40204	NE (<60)	2022-10-27 09:24:00	2022-10-26 15:44:00	SDF	Other	Investigated	Non-Standard	Weather	I recently purchased a home on Samuel St and noticed I am in group 2 on the quiet home eligible map. I wanted to see what the next step for this program is?	1
Greenup RD	40217	NE (<60)	2022-10-26 17:14:00	2022-10-26 17:14:00	SDF	Noise At Wrong Time	Investigated	Non-Standard	Weather	Why are the UPS bombing raids going on? It is 5:00 p.m. They are not even a second apart.	1
Greenup RD	40217	NE (<60)	2022-10-26 19:04:00	2022-10-26 19:04:00	SDF	Noise At Wrong Time	Investigated	Non-Standard	Weather	It is 7:00 p.m. and the non-stop UPS bombing raids are still going. They have been on every since I got home.	1
Greenup RD	40217	NE (<60)	2022-10-27 17:07:00	2022-10-27 17:07:00	SDF	Constant Noise	Investigated	Non-Standard	Weather	Why are the UPS bombing raids going on? They have been going non-stop for 3 hours now. (Representative of 2 additional comments received within the hour.)	3

- Standard:** Indicates the "Most Preferred" runway configuration was being utilized at the time of the comment.
Non-Standard: Indicates that a "Lesser Preferred" runway configuration was being utilized at the time of the comment.
QHP: QuieterHome Program
- This column is used to indicate the conditions which most likely necessitated a deviation from the standard procedures.
- Comments may be edited for space, format, or unrelated content.

Comments (SDF/LOU)

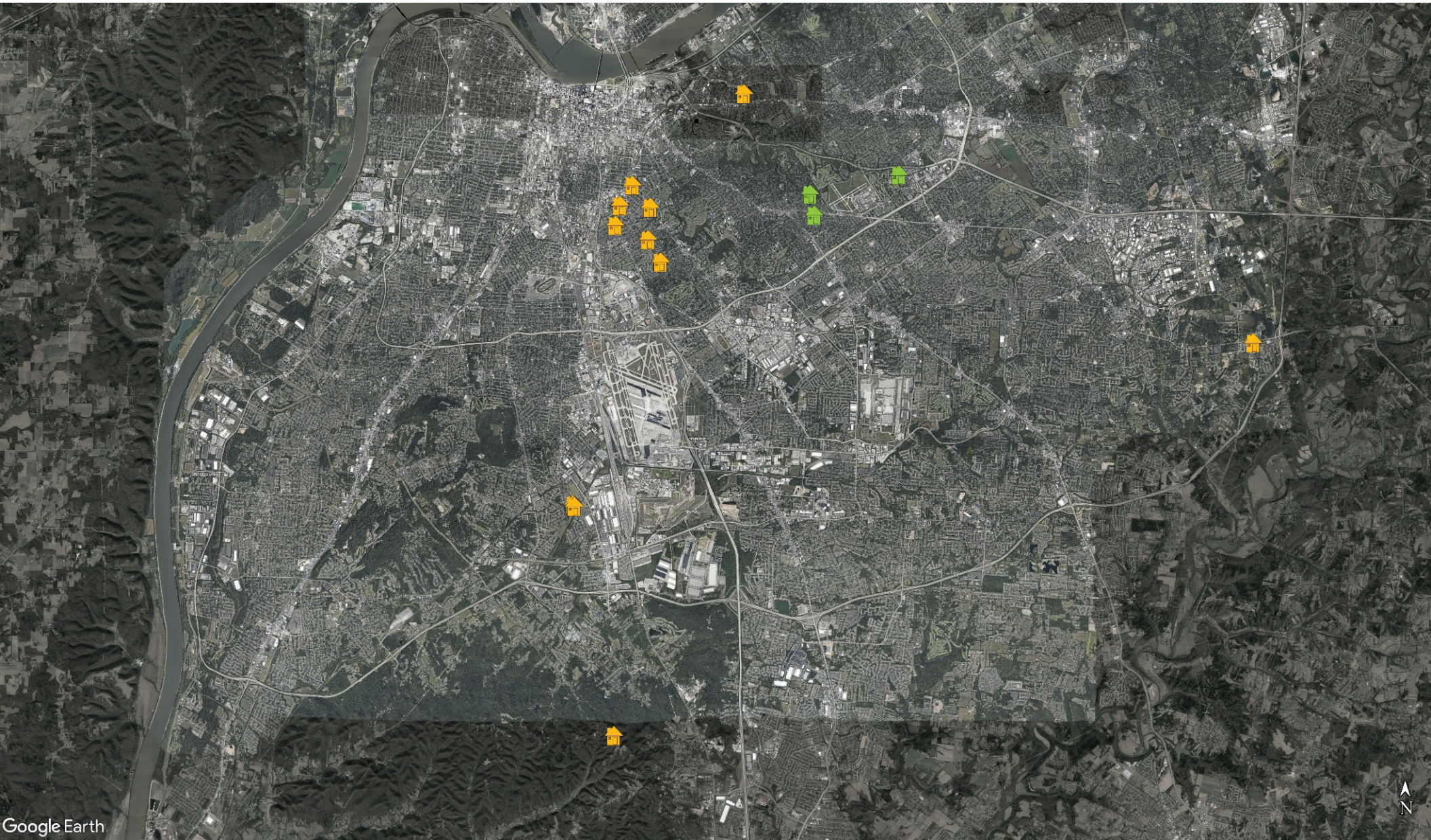
October 2022

Street	Zip Code	CNF Quad / 2021 DNL	Time Received	Time	Airport	Disturbance Type	Status	Operation or Comment Type ¹	Deviation Type ²	Comments ³	Number of Contacts
Greenup RD	40217	NE (<60)	2022-10-27 19:05:00	2022-10-27 19:05:00	SDF	Noise At Wrong Time	Investigated	Non-Standard	Weather	It is after 7:00 p.m. and the UPS bombing raids are still going non-stop to the north. Why are they still flying at 7:00 p.m. Answer that question and do not lie.	1
York River RD	40214	SW (<60)	2022-10-28 12:42:00	2022-10-28 03:30:00	SDF	Aircraft Off Course	Investigated	Standard	None	Just when you think it cannot get any worse this morning, they started at 3:30 a.m. about 1 every minute with UPS takeoffs from the West runway departing south banking, turning WSW less than a mile away from my house. They start banking and turning as soon as they are airborne on the runway (see pics - landing - Memphis and McAllen) This departure puts them really close and loud. While several this morning DID NOT bank and turn, they flew straight and parallel to the runway till the Jefferson County line then turned (see pics - Hamilton -San Antonio). These were several decibels quieter (bedroom microphone) and you could hardly hear them. We could live with this noise level based upon the destinations in the screen shots it appears UPS is cutting corners banking turning early which cause increased noise.	1
									Received	LRAA	108

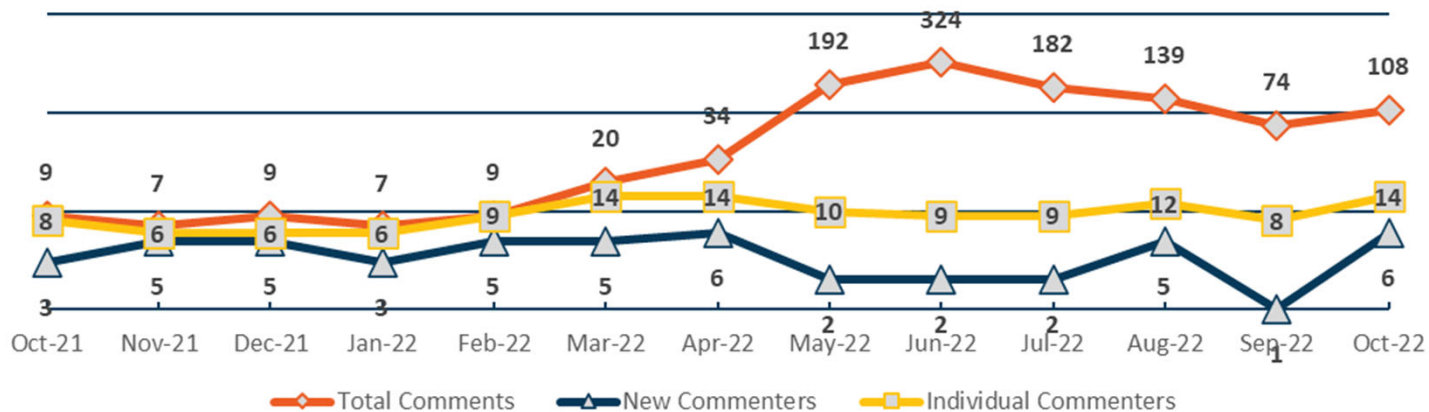
1. **Standard:** Indicates the “Most Preferred” runway configuration was being utilized at the time of the comment.
Non-Standard: Indicates that a “Lesser Preferred” runway configuration was being utilized at the time of the comment.
QHP: QuieterHome Program
2. This column is used to indicate the conditions which most likely necessitated a deviation from the standard procedures.
3. Comments may be edited for space, format, or unrelated content.

Comment Location (SDF/LOU)

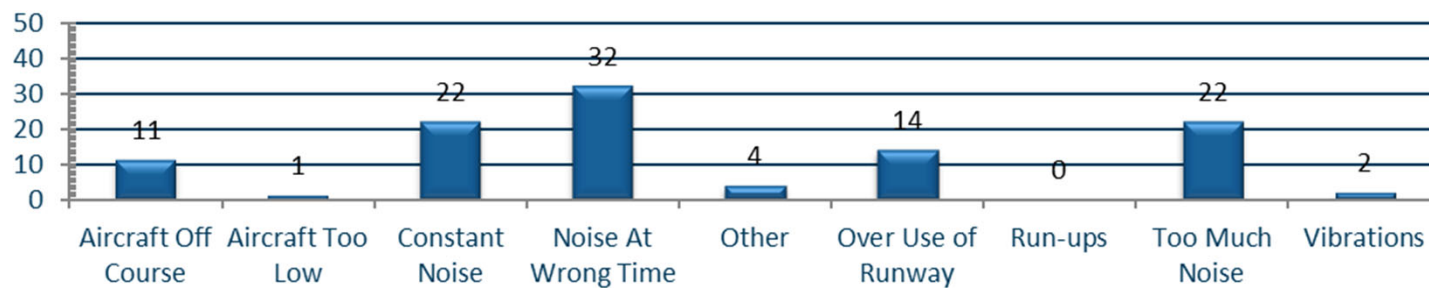
October 2022



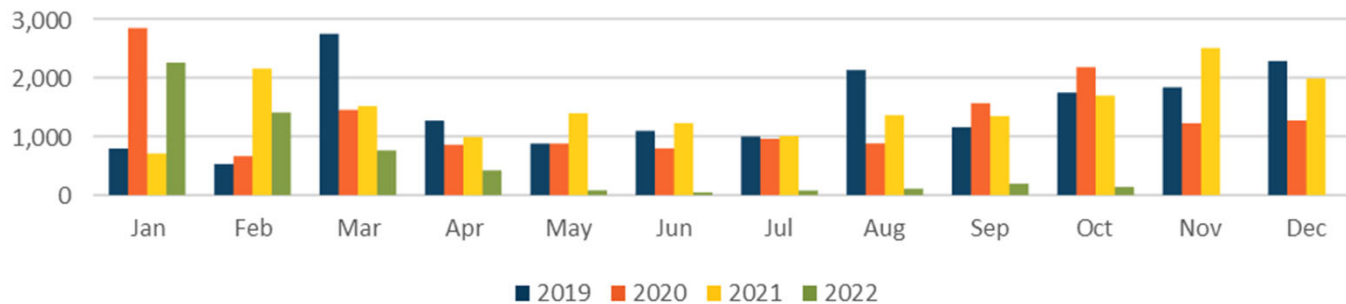
Total, New, and Individual Comments (SDF/LOU)



Comment Type (SDF and LOU) October 2022



Operations Per Complaint (SDF)



Daily Runway Use Uncorrected (SDF) September 2022

Flow	Time	Thu 9-1	Fri 9-2	Sat 9-3	Sun 9-4	Mon 9-5	Tue 9-6	Wed 9-7	Thu 9-8	Fri 9-9	Sat 9-10	Sun 9-11	Mon 9-12	Tue 9-13	Wed 9-14	Thu 9-15	Fri 9-16	Sat 9-17	Sun 9-18	Mon 9-19	Tue 9-20	Wed 9-21	Thu 9-22	Fri 9-23	Sat 9-24	Sun 9-25	Mon 9-26	Tue 9-27	Wed 9-28	Thu 9-29	Fri 9-30	Time	
North Flow	0:00																															0:00	
	0:30																															0:30	
	1:00																															1:00	
	1:30																															1:30	
	2:00																															2:00	
	2:30																															2:30	
South Flow	3:00																															3:00	
	3:30		X				XX									X	X											X			X	3:30	
	4:00									X					X																	4:00	
	4:30								X						X								X			X			X	X	X	4:30	
	5:00	X									X								X			X										5:00	
	5:30																		X													5:30	
	6:00																															6:00	
	6:30																															6:30	
	7:00																												X			7:00	
	7:30							X																								7:30	
8:00																																8:00	
8:30																																8:30	
North Flow	9:00																																9:00
	9:30																																9:30
	10:00																X															10:00	
	10:30				X																												10:30
	11:00																																11:00
	11:30																																11:30
	12:00																																12:00
	12:30	X																									X						12:30
	13:00	X																															13:00
	13:30																X																13:30
South Flow	14:00	X							X																								14:00
	14:30																															X	14:30
	15:00																																15:00
	15:30																											X		X			15:30
	16:00																											X		X			16:00
	16:30																																16:30
	17:00																												X		X	X	17:00
	17:30							XX																			X			X			17:30
	18:00						X																					X		X			18:00
	18:30																																

Preferred Flow

DATIS Reported Conditions Indicate Support for Non-Preferred Flow

DATIS Reported Conditions Do Not Indicate Support for Non-Preferred Flow

X Complaint

Source: Louisville International Airport
Aircraft Flight Tracking and Noise Management System (AFTNMS)

Daily Runway Use (SDF)

Tower Comments September 2022

Day	Date	Time	Comment
Thu	01-Sep-22		
Fri	02-Sep-22		
Sat	03-Sep-22		
Sun	04-Sep-22		
Mon	05-Sep-22	2000-2130	North flow for wind and wet runways
Tue	06-Sep-22		
Wed	07-Sep-22		
Thu	08-Sep-22		
Fri	09-Sep-22		
Sat	10-Sep-22		
Sun	11-Sep-22		
Mon	12-Sep-22		
Tue	13-Sep-22		
Wed	14-Sep-22	0730-0830	Facility log reflects South flow, switched to North flow @ 0820
Wed	14-Sep-22	1630-1700	Remaining North flow for peak wind 360@08
Thu	15-Sep-22		
Fri	16-Sep-22		
Sat	17-Sep-22		
Sun	18-Sep-22	0900-0930	Remaining South flow for peak wind 160@08
Mon	19-Sep-22		
Tue	20-Sep-22		
Wed	21-Sep-22		
Thu	22-Sep-22		
Fri	23-Sep-22		
Sat	24-Sep-22		
Sun	25-Sep-22	2030-0000	North flow for louder than life concert
Mon	26-Sep-22	0000-0230	North flow for louder than life concert
Tue	27-Sep-22	0700-0830	North flow for wind and forecast 290@16G20
Wed	28-Sep-22	2000-2130	Remaining North flow for wind and gusts, peak wind 310@10G16
Thu	29-Sep-22		
Fri	30-Sep-22		

Daily Runway Use Uncorrected (SDF) October 2022

Flow	Time	Sat 10-1	Sun 10-2	Mon 10-3	Tue 10-4	Wed 10-5	Thu 10-6	Fri 10-7	Sat 10-8	Sun 10-9	Mon 10-10	Tue 10-11	Wed 10-12	Thu 10-13	Fri 10-14	Sat 10-15	Sun 10-16	Mon 10-17	Tue 10-18	Wed 10-19	Thu 10-20	Fri 10-21	Sat 10-22	Sun 10-23	Mon 10-24	Tue 10-25	Wed 10-26	Thu 10-27	Fri 10-28	Sat 10-29	Sun 10-30	Mon 10-31	Time
North Flow	0:00																																0:00
	0:30																																0:30
	1:00																																1:00
	1:30																																1:30
	2:00																																2:00
	2:30																																2:30
South Flow	3:00													XX																			3:00
	3:30												X	X																			3:30
	4:00													X																			4:00
	4:30													X																			4:30
	5:00			X																													5:00
	5:30																																5:30
	6:00																																6:00
	6:30																																6:30
	7:00																																7:00
	7:30																																7:30
	8:00																																8:00
	8:30	X																															8:30
North Flow	9:00																																9:00
	9:30																																9:30
	10:00																																10:00
	10:30																																10:30
	11:00																																11:00
	11:30																																11:30
	12:00																																12:00
	12:30																																12:30
	13:00																																13:00
	13:30																																13:30
South Flow	14:00			X																													14:00
	14:30																																14:30
	15:00		X																														15:00
	15:30			X																													15:30
	16:00		X	X																													16:00
	16:30																																16:30
	17:00				X																												17:00
	17:30																																17:30
	18:00			X																													18:00
	18:30																																18:30
	19:00			X																													19:00
	19:30																																19:30
	20:00																																20:00
	20:30																																20:30
	21:00																																21:00
	21:30																																21:30
North Flow	22:00																																22:00
	22:30																																22:30
	23:00																																23:00
	23:30																																23:30
	0:00																																0:00

Preferred Flow

DATIS Reported Conditions Indicate Support for Non-Preferred Flow

DATIS Reported Conditions Do Not Indicate Support for Non-Preferred Flow

X Complaint

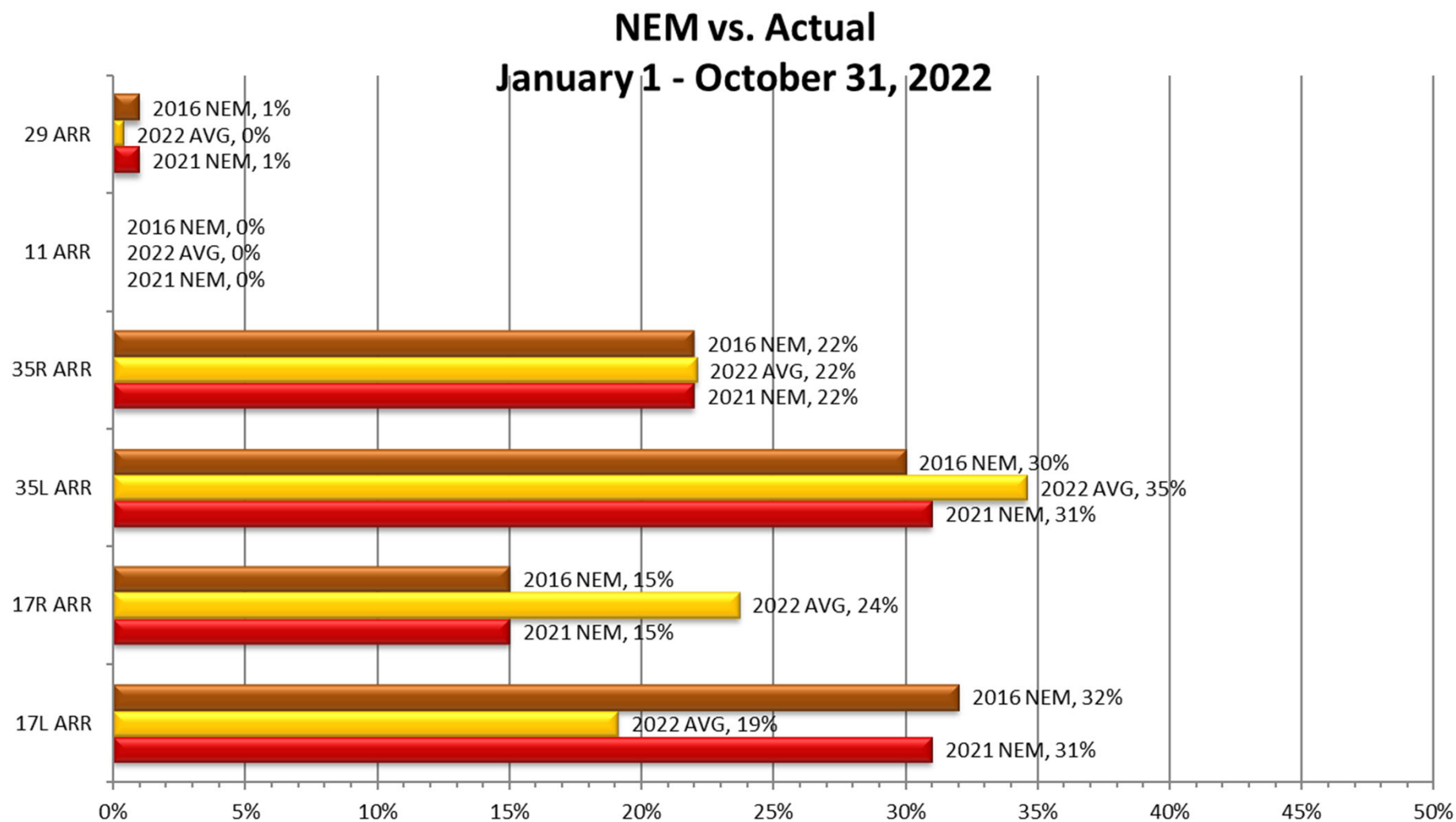
Source: Louisville International Airport
Aircraft Flight Tracking and Noise Management System (AFTNMS)

Daily Runway Use (SDF)

Tower Comments October 2022

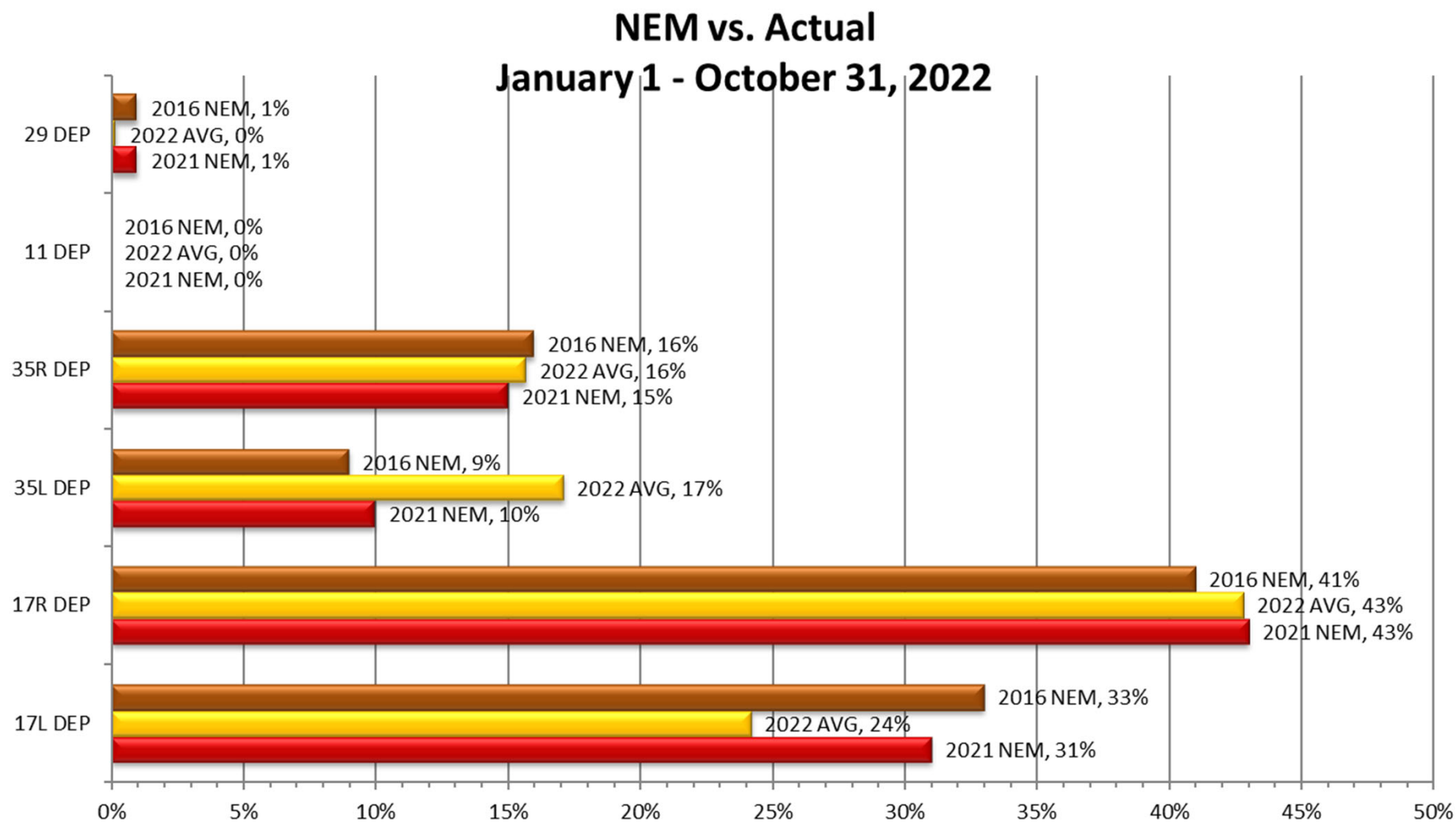
Day	Date	Time	Comment
sat	01-Oct-22		
sun	02-Oct-22		
mon	03-Oct-22		
tue	04-Oct-22		
wed	05-Oct-22		
thu	06-Oct-22		
fri	07-Oct-22		
sat	08-Oct-22	1830-2000	Forecasted winds above component
sun	09-Oct-22	0100-0330	Forecasted winds above component
mon	10-Oct-22		
tue	11-Oct-22		
wed	12-Oct-22		
thu	13-Oct-22	0800-0830	Winds gusting occasionally above tailwind component
thu	13-Oct-22	2000-2130	Wind 28012G21
fri	14-Oct-22		
sat	15-Oct-22		
sun	16-Oct-22	1400-1800	WX south of field
mon	17-Oct-22		
tue	18-Oct-22		
wed	19-Oct-22	1830-2130	Wind 28013G21
thu	20-Oct-22		
fri	21-Oct-22		
sat	22-Oct-22		
sun	23-Oct-22		
mon	24-Oct-22		
tue	25-Oct-22		
wed	26-Oct-22	2000-2130	Wind 33009
thu	27-Oct-22		
fri	28-Oct-22		
sat	29-Oct-22	1400-0000	Remained North for parachute activity
sun	30-Oct-22		
mon	31-Oct-22		

Runway Use (SDF Arrivals)



Source: Louisville International Airport
Aircraft Flight Tracking and Noise Management System (AFTNMS)

Runway Use (SDF Departures)



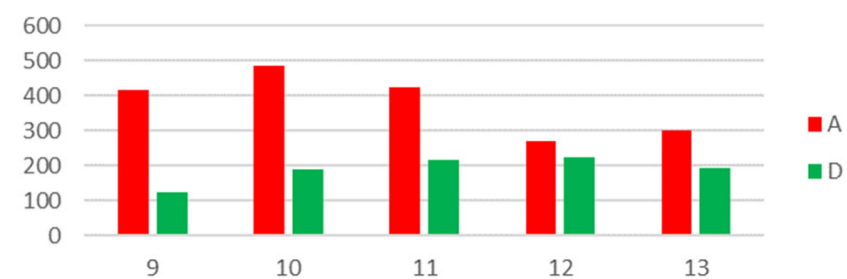
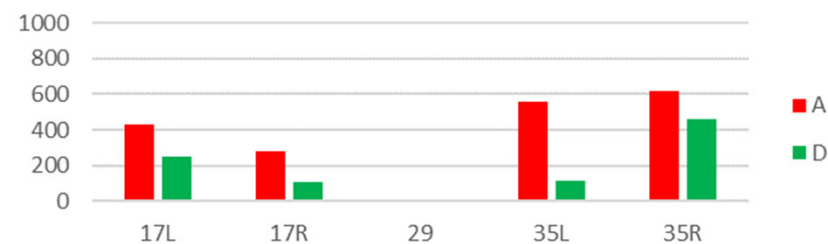
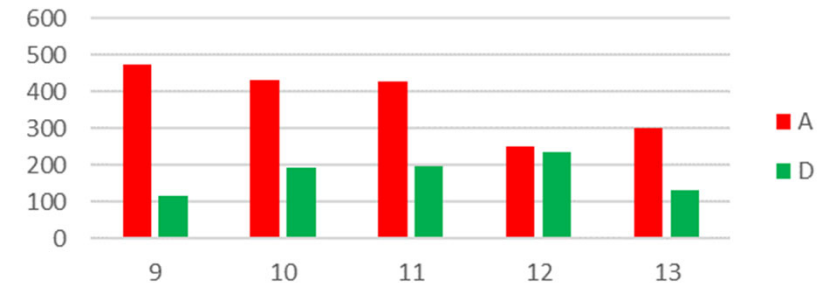
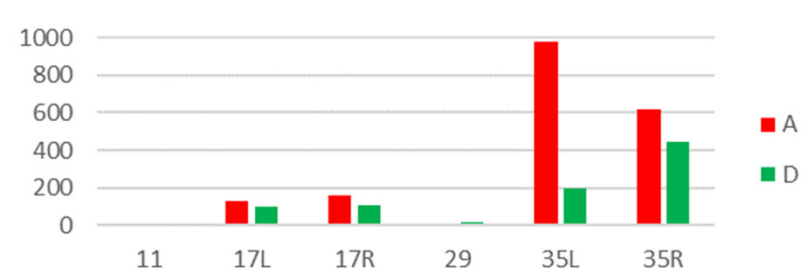
Runway Use 0900L-1400L_(SDF)

Runway

Hour

September 2022

October 2022



Gate Compliance by Runway

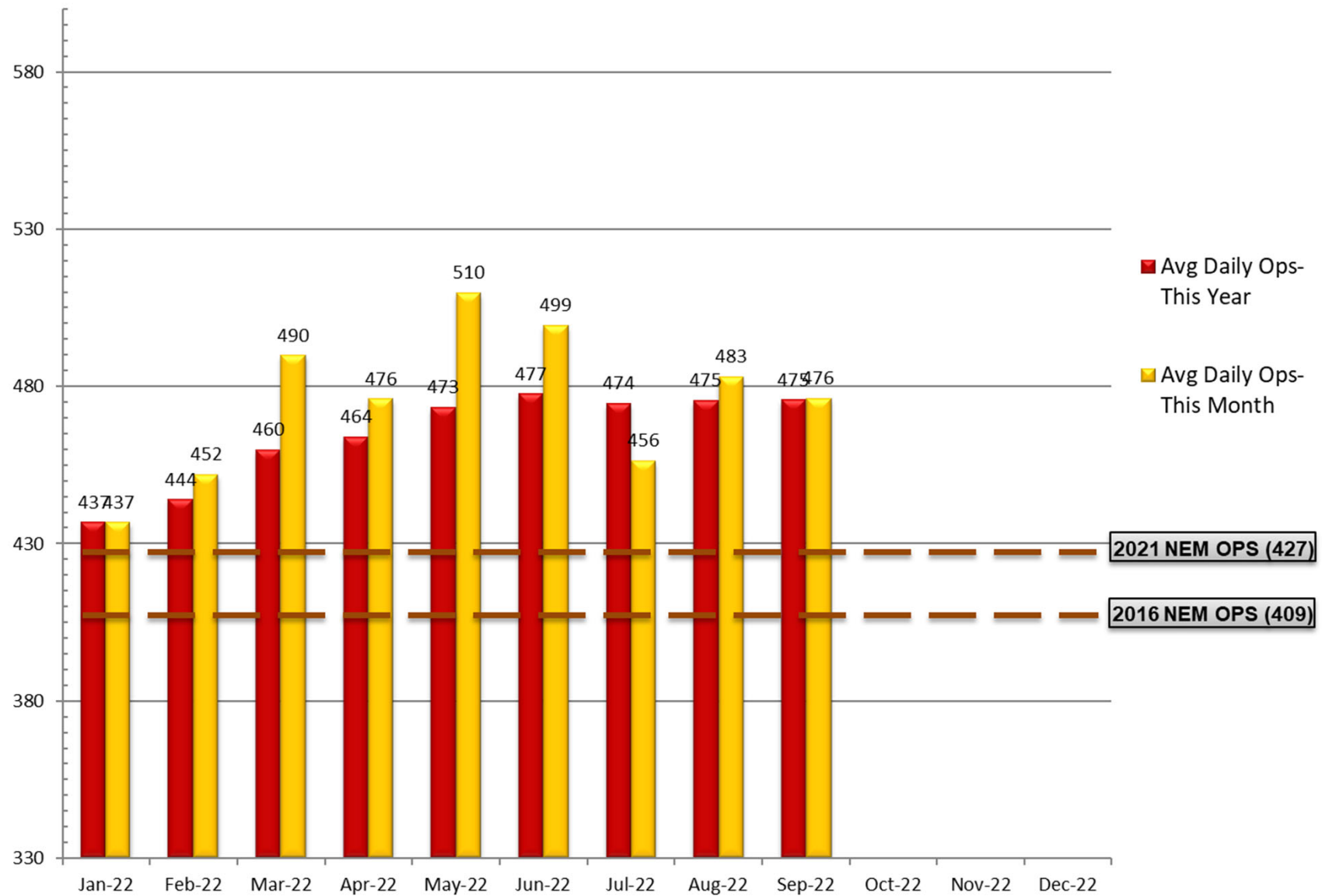
As of October 31, 2022

ARRIVALS Percent Compliant					Departure Percent Compliant					
Month	17L	17R	35L	35R	ARR AVG	17L	17R	35L	35R	DEP AVG
Nov-20	88%	95%	92%	88%	91%	74%	91%	72%	80%	79%
Dec-20	93%	96%	92%	91%	93%	73%	91%	77%	77%	80%
Jan-21	93%	95%	94%	91%	93%	78%	92%	70%	77%	79%
Feb-21	93%	94%	95%	92%	94%	72%	86%	73%	86%	79%
Mar-21	90%	96%	88%	91%	91%	72%	87%	64%	82%	76%
Apr-21	91%	95%	92%	89%	92%	68%	88%	75%	86%	79%
May-21	91%	95%	90%	89%	91%	83%	89%	69%	87%	82%
Jun-21	93%	96%	92%	91%	93%	80%	89%	67%	90%	82%
Jul-21	90%	94%	92%	91%	92%	82%	87%	76%	88%	83%
Aug-21	92%	95%	92%	93%	93%	82%	90%	71%	89%	83%
Sep-21	92%	93%	91%	94%	93%	79%	90%	67%	86%	81%
Oct-21	92%	95%	92%	91%	93%	78%	88%	66%	85%	79%
Nov-21	90%	94%	91%	90%	91%	74%	90%	73%	86%	81%
Dec-21	92%	97%	93%	90%	93%	68%	88%	69%	80%	76%
Jan-22	90%	96%	93%	91%	93%	74%	90%	74%	87%	81%
Feb-22	91%	96%	93%	90%	93%	64%	89%	71%	81%	76%
Mar-22	91%	96%	93%	91%	93%	72%	88%	74%	84%	80%
Apr-22	94%	95%	92%	91%	93%	75%	90%	68%	73%	77%
May-22	93%	95%	93%	93%	94%	75%	86%	74%	83%	80%
Jun-22	92%	92%	90%	91%	91%	78%	91%	68%	85%	81%
Jul-22	94%	95%	93%	94%	94%	77%	88%	66%	88%	80%
Aug-22	93%	93%	94%	94%	94%	81%	88%	70%	89%	82%
Sep-22	93%	93%	92%	93%	93%	88%	91%	71%	87%	84%
Oct-22	93%	95%	93%	92%	93%	80%	90%	68%	87%	81%
24 Month Avg.					93%					80%

Source: Louisville International Airport
Aircraft Flight Tracking and Noise Management System (AFTNMS)

Operations (SDF)

As of September 30, 2022

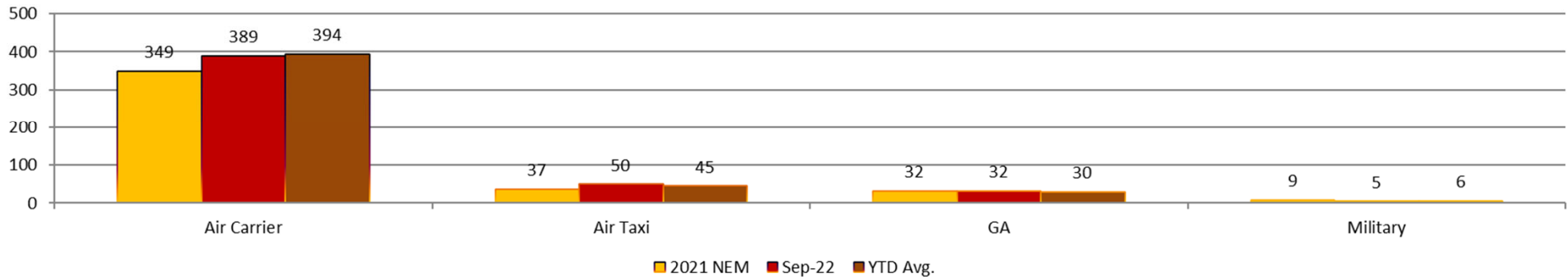


Source: Louisville <http://www.flylouisville.com/regional-airport-authority/reports-and-statistics/>

Operations and Landing (SDF)

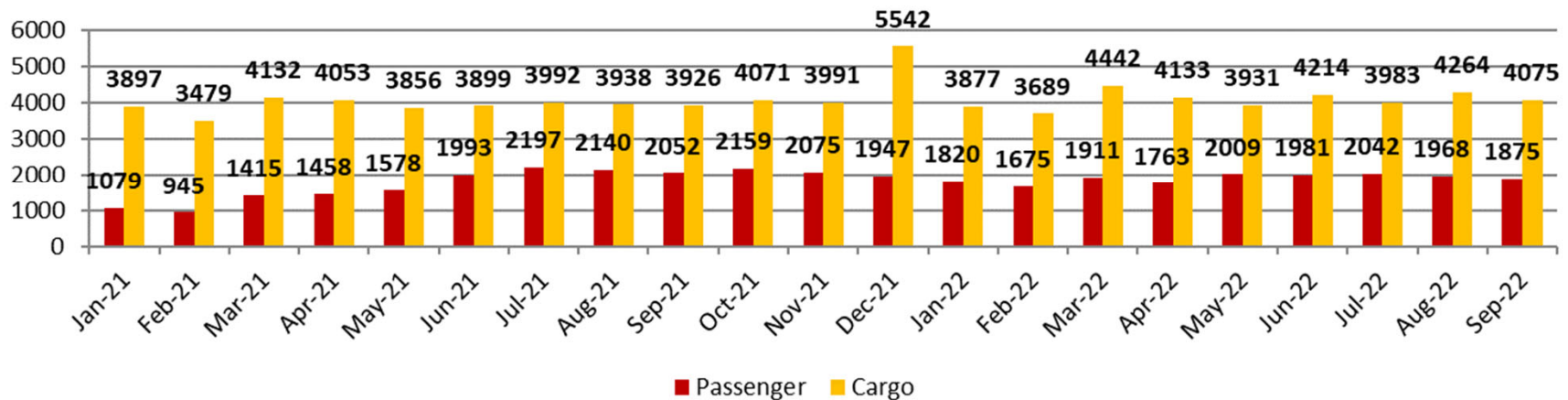
As of September 30, 2022

Average Day Operations by Category

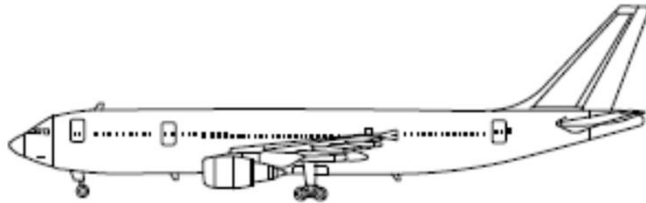


- **Air Carrier.** (AC) Aircraft with seating capacity of more than 60 seats or a maximum payload capacity of more than 18,000 pounds, carrying passengers or cargo for hire or compensation. This includes US and foreign-flagged carriers.
- **Air Taxi.** (AT) Aircraft designed to have a maximum seating capacity of 60 seats or less or a maximum payload capacity of 18,000 pounds or less, carrying passengers or cargo for hire or compensation.
- **General Aviation.** (GA) Takeoffs and landings of all civil aircraft, except for air carriers or air taxis.
- **Military.** (MIL) Operations by all classes of military takeoffs and landings at FAA and FTC facilities.

Landings Passenger/Cargo



Sample Aircraft Types (SDF)



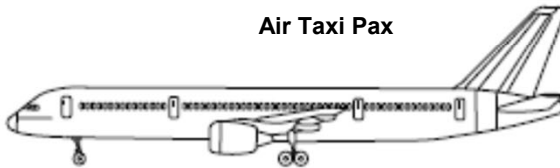
A300
Air Carrier Cargo



B767
Air Carrier Cargo



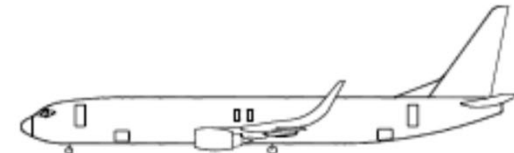
E135/45
Air Taxi Pax



B757
Air Carrier Cargo



MD11
Air Carrier Cargo



B737
Air Carrier Pax



CRJ2
Air Taxi Pax



E170
Air Carrier Pax



MD80
Air Carrier Pax



CRJ9
Air Carrier Pax