

Building for the Future

2022: A Year in Review
February 7, 2023

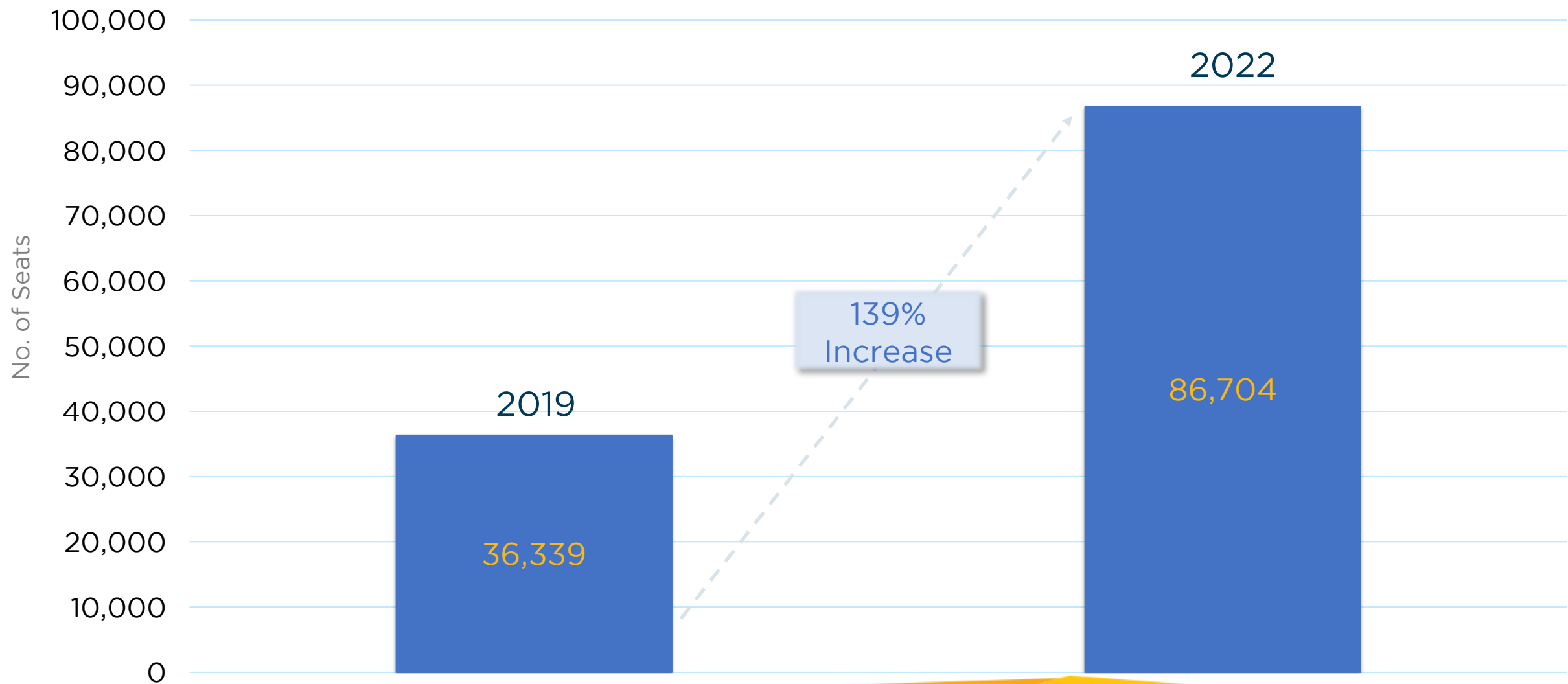
Dan Mann, A.A.E.
Executive Director



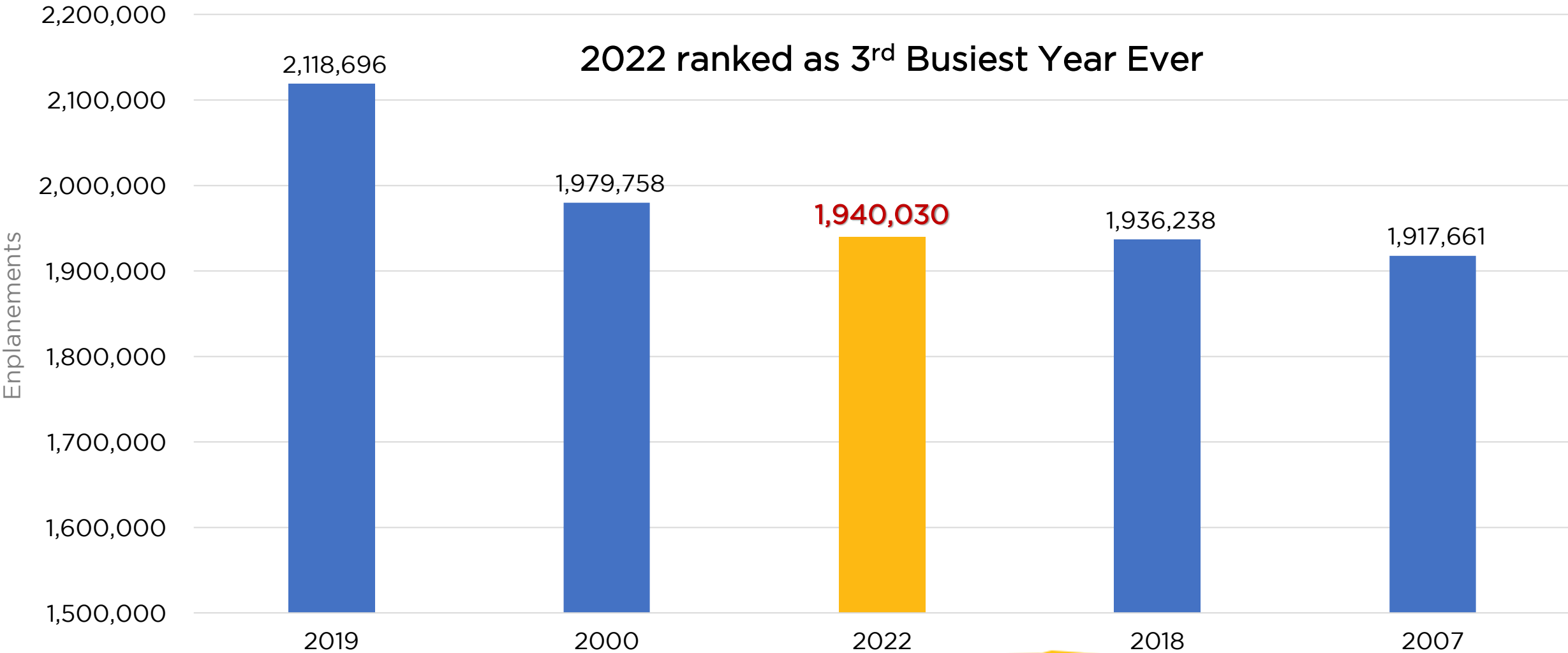
Video

This is Louisville Muhammad Ali International Airport

Growth of ULCCs



Record Setting Passenger Traffic



Air Service Success

3 New Airlines

Breeze
Spirit
Sun Country*

4 New Routes including:

American → Boston
Delta → Boston*
Breeze → San Francisco
Sun Country → Minneapolis*

2 Restored Routes including:

Southwest → Houston (daily)
Southwest → Las Vegas (daily)

8 Airlines

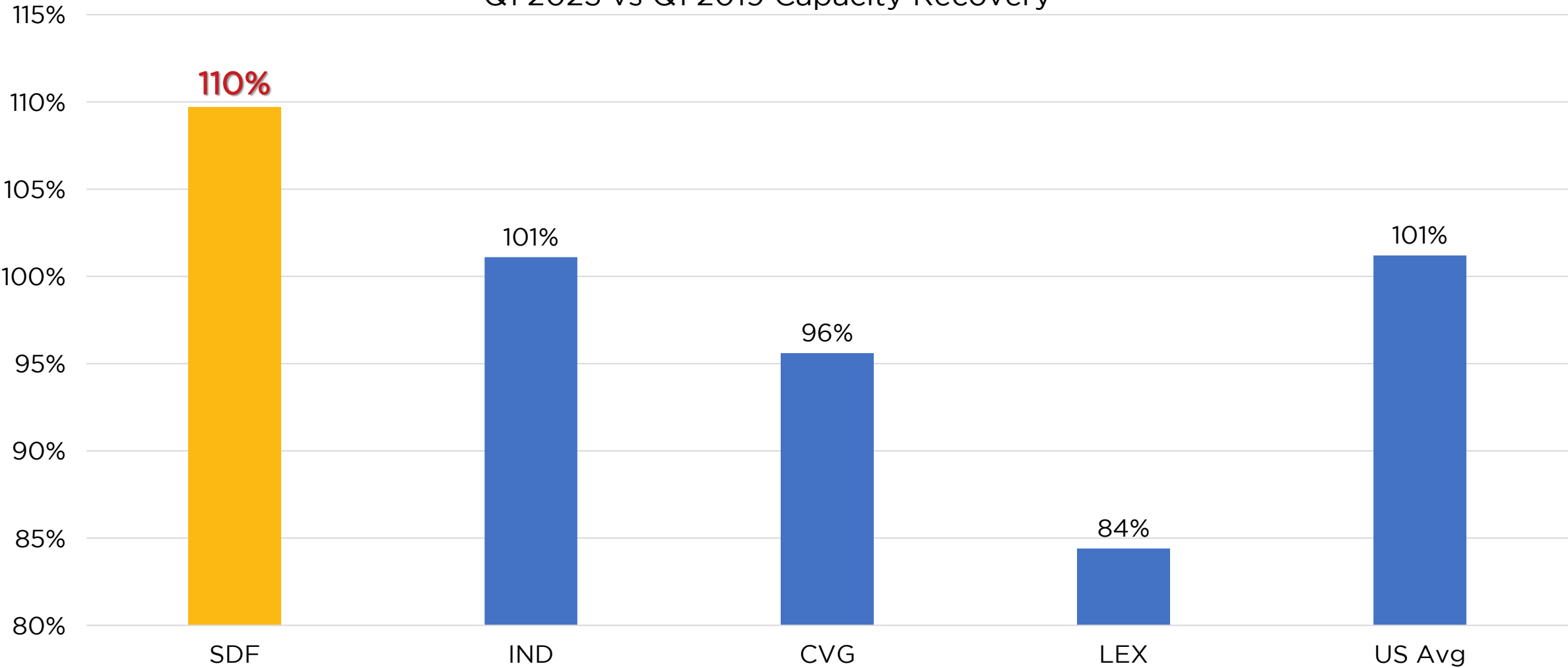
37 Nonstop Destinations – **NEW** Record!

2022 was **3rd** Busiest Year for SDF

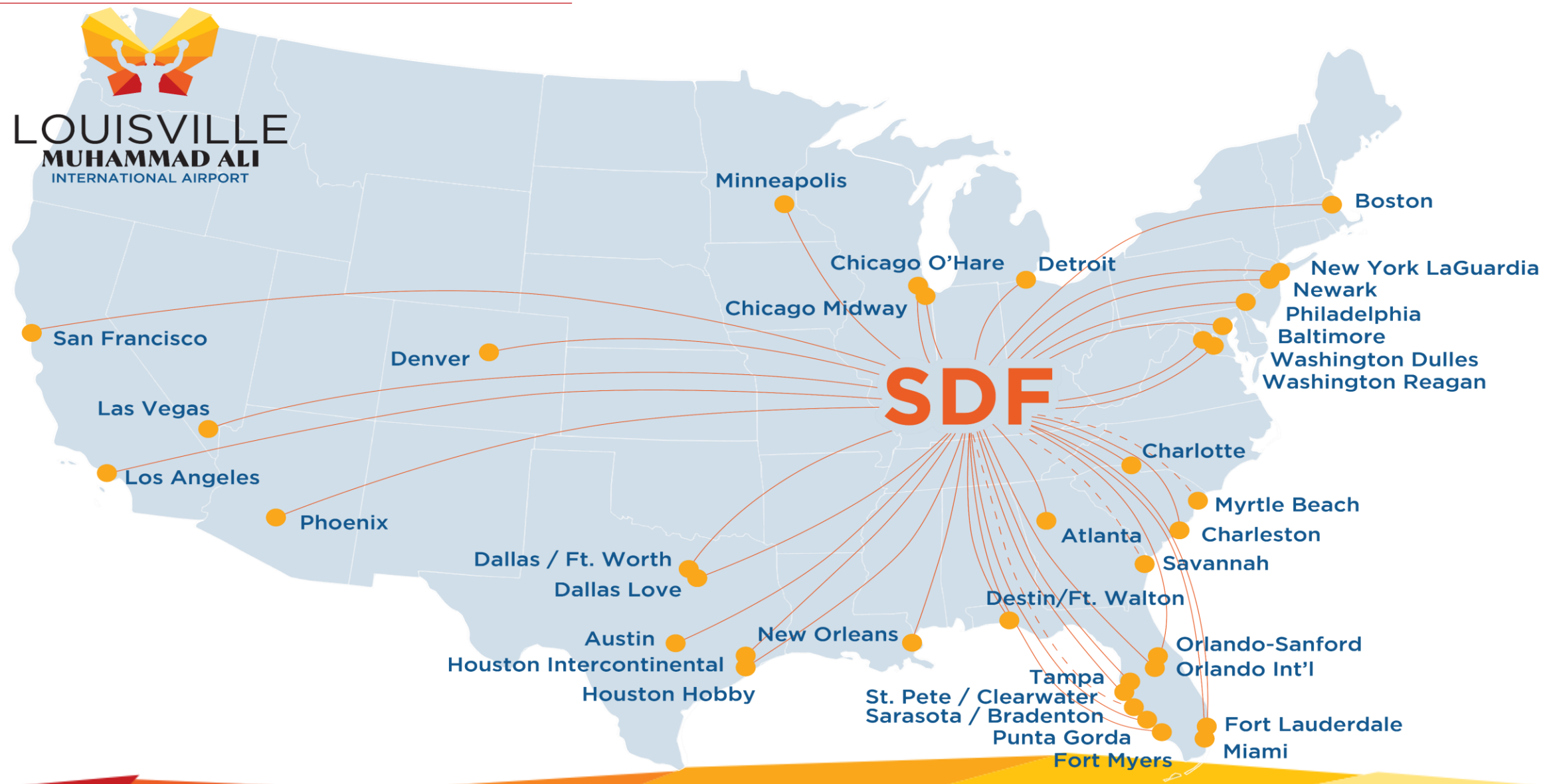


Region Leading Capacity Recovery

Q1 2023 vs Q1 2019 Capacity Recovery



Route Growth



\$76 million: SDF Next Airfield Investment



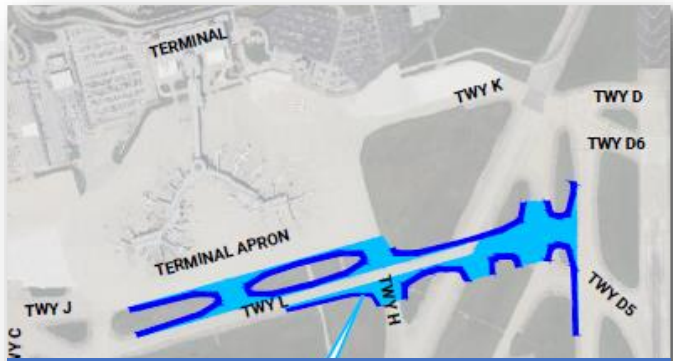
Geothermal Wellfield and
Terminal Apron Construction
\$21.7 million



Northwest Quad Development
and Taxiway A Connector
\$6.7 million



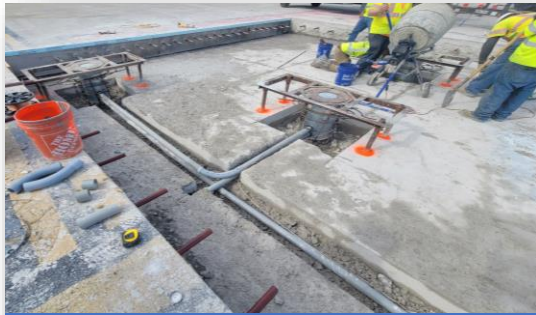
Runway and Taxiway
Pavement Rehab
\$12.65 million



Taxiway L Extension (Phase 1)
\$10 million



Taxiway B Reconstruction
\$14.8 million



Airfield Lighting and
Signage Replacement
\$11.1 million

\$127 million: SDF Next Passenger Facilities



Airport Operations
Command Center and
Security Upgrades
\$19.2 million



Rental Car Facility and
Enabling Projects
\$30 million



“Signature Louisville”
Project and Rental Car
Access Tunnels
\$5.7 million



Parking Improvements:
Park Assist
\$1.3 million



Parking Improvements:
All SDF Lots Enhanced
\$15.1 million



Replacement of All
Terminal Passenger
Boarding Bridges
\$22.4 million



Elevator, Escalator and
Moving Walkway
Replacement
\$10 million



Upgrades to Terminal
Mechanical Systems
\$15.5 million



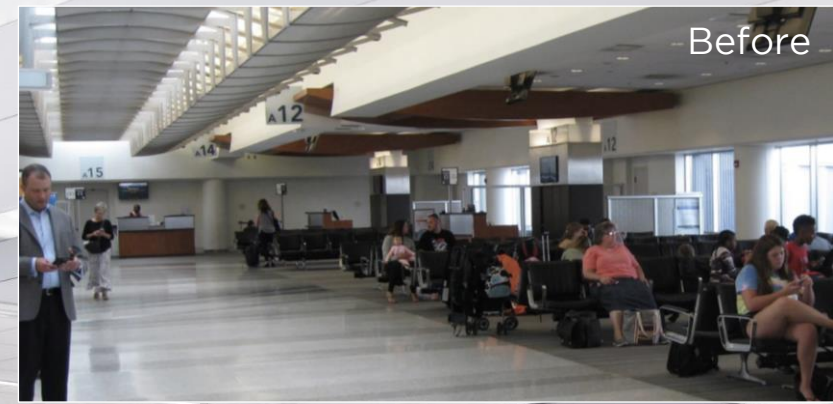
Baggage Claim Restrooms –
Men's, Women's, All-Gender and
Mother's Room
\$2.3 million



Terminal Covered
Pedestrian Walkways and
Pet Relief Area
\$5.5 million



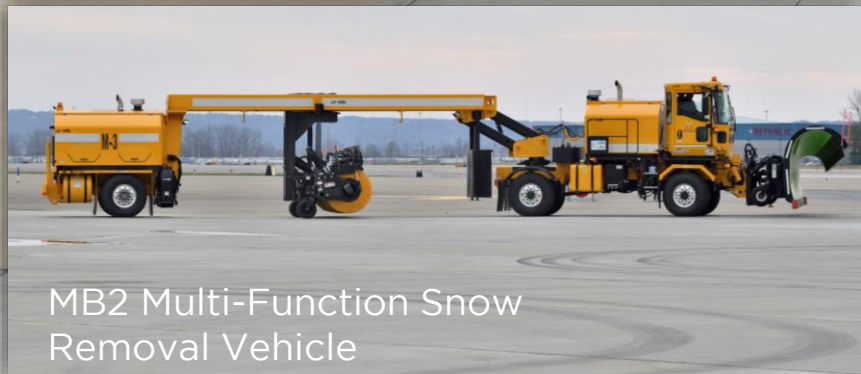






Continuing our Investments

More than \$10 million invested in equipment and facilities for SDF Winter Weather Operations



MB2 Multi-Function Snow
Removal Vehicle



New Snow Equipment Facility

Cargo: A Logistics Leader

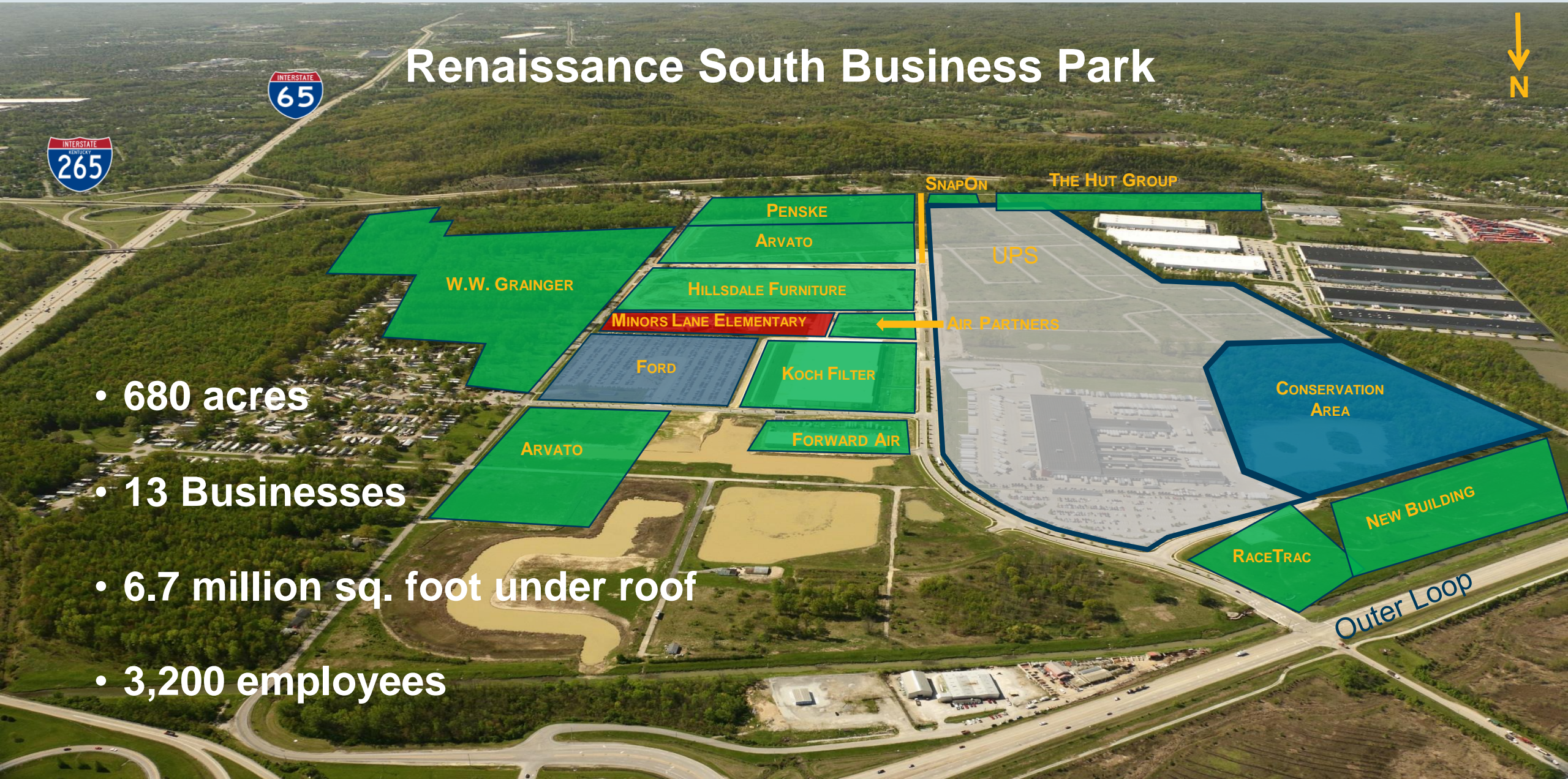
- Home to UPS Worldport and base of UPS Airlines
- **3rd** busiest cargo airport in North America
- **6th** busiest cargo airport in the world
- Over 380 daily flights
- Life Saving Cargo and Critical role in vaccine distribution
- 2022 Best Year for Cargo
- UPS investing \$220 million in new hangar at SDF



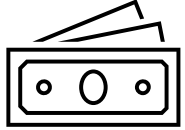
Louisville Renaissance Zone Corp.

Renaissance South Business Park

- 680 acres
- 13 Businesses
- 6.7 million sq. foot under roof
- 3,200 employees



Powering the Regional Economy



\$10.4 Billion Economic Impact



\$451.1 Million contributed to State and Local Taxes



\$1 of every \$7 in Louisville Metro tax revenue from airport operations



82,723 Jobs – 1 in 8 jobs in Louisville Metro from airport operations

Questions?



LOUISVILLE
MUHAMMAD ALI
INTERNATIONAL AIRPORT

