

**Community Noise Forum**  
**Monday, July 24, 2023**  
**Agenda**

- I. Call to Order: 6:00 PM
- II. Approval of May 22, 2023, Minutes
- III. Active Noise Cancellation Grant Update
- IV. Airspace Project Update
- V. Noise Exposure Map Update
- VI. FAA Noise Policy Review (Review/Approval of Working Group Comments)
- VII. Southwest Quadrant Working Group
- VIII. Part 150 NCP
  - a. Noise Insulation Program
  - b. Contraflow Exceptions
- IX. Current Noise Concerns
  - a. Noise Concerns/Complaints
  - b. Runway Utilization
  - c. Construction and Maintenance Activity
- X. Guest Comments
- XI. Announcements
- XII. Next Meeting: September 25, 2023
- XIII. Adjournment

## COMMUNITY NOISE FORUM (CNF)

Monday, May 22, 2023

### Members

Mary Rose Evans, ANA  
Bob Slattery, LRAA  
Greg Petto, FAA  
Jeff Kozak, UPS  
Patricia Gould, Northeast

Tom Foote, Airline Affairs  
John Sistarenik, LRAA Board  
Doug Black, Southwest  
Brian Sinnwell, LRAA

### Guests

Edward Mansfield, Merriweather  
Betsy Ruhe, Metro 21  
Rachel Roarx, State Representative

Travis Fiechter, Prestonia  
Eric Johnson, FAA, NATCA  
Justin Hicks, Louisville Public Media

- I. **Call to order:** The meeting was called to order at 6:00 p.m. by Mary Rose Evans.
- II. **Approval of the March 27, 2023, Minutes:** The March meeting notes were reviewed with no changes and approved.
- III. **Active Noise Cancellation Grant Update:** Bob reported that the project status had not changed since the previous update. We are still waiting for FAA Guidance on how to proceed with procurement. The LRAA is currently working on resolving contractual issues with the consortium (LRAA, HMMH, National Institute of Aerospace (NIA)) and the FAA. Specifically, we are awaiting a response from the FAA on the type of agreement that meets FAA procurement requirements for this type of project.
- IV. **Airspace Project Update:** Bob reported The FAA was contacted regarding the CNF request to attend a meeting and brief the group on the proposed procedures. The FAA has tentatively said they will attend the September meeting and brief the procedures prior to beginning the public outreach for the project.
- V. **Noise Exposure Map Update:** Bob reported that the LRAA has begun the process of updating the Noise Exposure Maps for SDF. Qualifications from consulting firms were received Friday, May 19<sup>th</sup>. Our goal is to award the contract at the June Board Meeting. It is estimated that the project will take 8-12 months to complete. Tom Foote asked how the NEM update would line up with the airspace redesign project. Bob replied that the intent is to incorporate the updated procedures into the future case (forecasted) NEM. Doug Black asked if the accelerated height takeoff has been approved. Jeff Kozak replied that the departures are the same as they have been.

**VI. FAA Noise Policy Review:** Bob informed the group that the FAA is soliciting public comments for their Noise Policy Review and will be conducting virtual webinars on May 16, 18, 23 and 25. An email was sent to members on May 5. Key items they are looking for input on are:

- The FAA's current use of DNL or Day-Night Average Sound Level as the primary noise metric for assessing cumulative aircraft noise exposure.
- If and how alternative noise metrics may be used in lieu of or in addition to DNL to better inform agency decisions and improve FAA's disclosure of noise impacts.
- The community's understanding of noise impacts and how to better manage and respond to community's aviation noise concerns.
- Ways to improve communications on proposed noise-related agency actions.
- The findings from ongoing noise research, including the Neighborhood Environmental Survey and other research related to health impacts, speech interference, sleep disturbance, and economic impacts.

Additional information is available at [www.faa.gov/noisepolicyreview](http://www.faa.gov/noisepolicyreview). Mary Rose proposed forming a working group to draft comments for the group and asked for comments. John Sistarenik supported the establishment of a working group to draft comments.

**VII. Southwest Quadrant Working Group:** Mary Rose informed the group that Doug Black arranged a meeting with state and local representatives in the southwest quadrant. It was recommended that the CNF establish a Southwest Quadrant Working Group to develop specific requests to give to local and state representatives to say, this is what are issues are and, these are the items that we feel you could do to help us address noise concerns. The group recommended that a southwest working group be established. Doug Black will establish the date and time for the working group and let the group know.

**VIII. Part 150 NCP:**

**A. Noise Insulation Program: Residential:** This project is to sound insulate residences within the DNL 65 contour according to the 2021 Noise Exposure Map.

- Construction is complete for the first 3 groups of 105 families.
- Construction for a 4th group of 20 families, began on Monday April 3 and is expected to be completed in June.

- A project for an additional 33 families is currently in the material procurement process and construction is expected to begin in July.
- A project for an additional 34 families was advertised in March and was awarded at the April meeting of the LRAA Board. Construction is estimated to begin in the fall.
- Testing has been completed for an additional 60 families and designs will begin this summer.

**B. Contraflow Exceptions:** Contraflow for March was 59% for arrivals from the south and 70% for departures to the south. In April arrivals from the south were 76% and departures to the south were 88%. Daily summaries for each month are contained in the handout. For calendar year 2023 arrivals from the south are 66% and departures to the south are 76%. A monthly summary going back 8 years is included in the handout.

#### **IV. Current Noise Concerns:**

- A. Report on Noise Concerns/Complaints:** A total of 25 comments from 11 individuals were received in March. In April, 21 comments were received from 12 individuals. Comments and locations are contained in the handout.
- B. Runway Utilization:** Runway utilization for March and April are contained in the handout. Daily runway utilization comments from the Air Traffic Control Tower for March and April are also included in the handout. Mary Rose pointed out that many locations across the country would like to have their tower involved in providing input to their groups and thanked the Air Traffic Control Tower for their hard work and providing comments and their participation in the CNF. Greg Petto said the tower is always available and happy to provide any clarification.
- C. Construction and Maintenance Activity:** Brian reported that there would be construction on the west runway from the beginning of June through the middle of August. Work is also being done on taxiway “L” in the middle of the airfield but should not have an impact on runway closures. After work is completed on the west side the plan is to switch over to the east runway from the middle of August through mid-November.

**VIII. Guest Comments:** State Representative Rachael Roarx reintroduced herself to the group. She said that it might be beneficial to create a special fund for those that live outside the DNL 65 contour. This approach could be more likely to get passed than tax credits. Councilwoman Betsy Ruhe also introduced herself and said she was interested in learning more about the noise compatibility program and the Active Noise Control project. Rachael mentioned that several members of the Beechmont Neighborhood Association would be interested in a tour of the new UPS hangar. Doug Black commented that he was able to go on a tour of the air traffic control tower several months ago. He said it was a very informative visit and it might be

helpful for new members if they could tour the tower. Mr. Mansfield asked if there is a reason why in the middle of 2022 LRAA received a lot more complaints than now, when the Airport operations should be approaching the normal number of departures and arrivals? Bob responded that there were no unusual operations in the month of June 2022. The spike in comments was related to comments from one individual. Mr. Black commented that he has been door to door in his community asking people if the noise bothers them and why they don't complain. Many of the responses are that they have complained in the past and nothing is done. Or, they sleep with earplugs. A discussion followed on the response to comments that are received and the possibility of informing people what happens with their comments once they are investigated.

**IX. Announcements:** None.

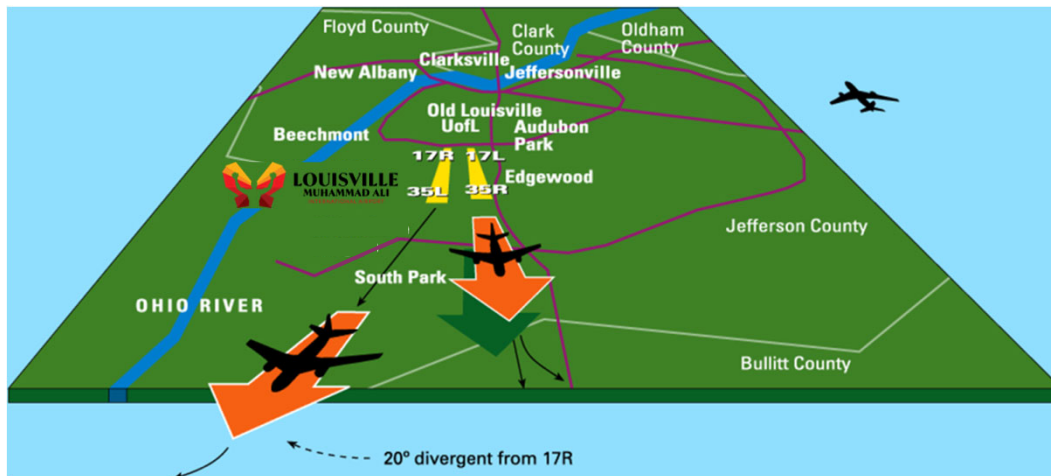
**X. Next Meeting:** July 24, 2023

**XI. Adjournment:** A motion was made to adjourn the meeting at 7:16 p.m.

# CONTRAFLOW

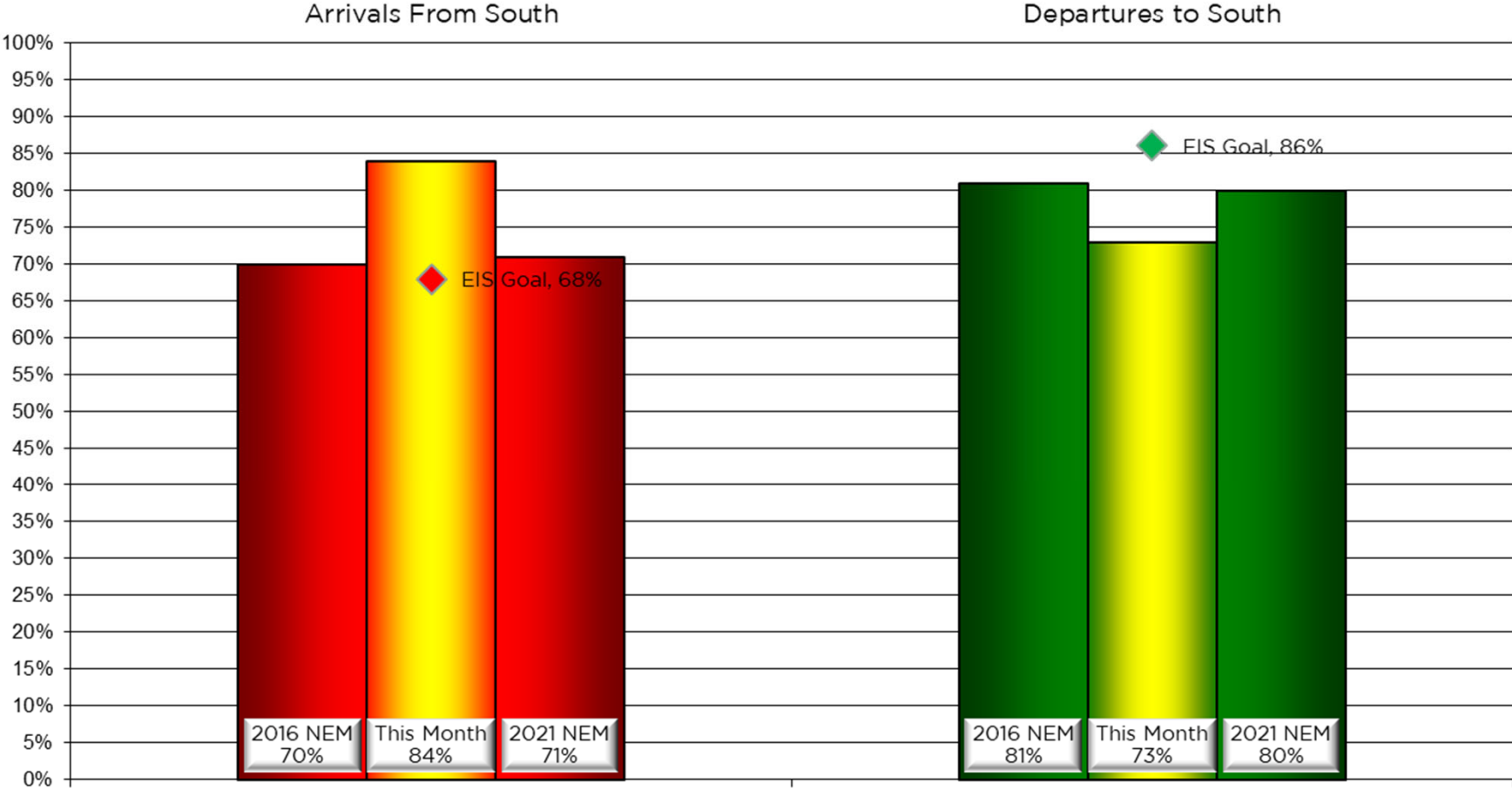
Between the hours of 10:00 p.m. and 7:00 a.m., the Airport operates from the south and to the south (contraflow) whenever wind, weather, and demand allow. Contraflow procedures require aircraft to arrive on Runways 35R and 35L and depart on Runways 17R and 17L in order to direct aircraft operations south of the Airport over areas which are less densely populated than areas north of the Airport.

Inbound



Outbound

Monthly Contraflow  
May 1-31, 2023



# Nightly Runway Use Summary - May 2023

(from 10:00 PM date list in first column to 7:00 AM the following morning)

		% of all arrivals from the south										% of all departures to the south													
Date	Day	* in	Runway#							Unknown	Notes / Comments	** in	Runway#							Unknown	Notes / Comments				
		compliance	11	17L	17R	29	35L	35R	Runway	Use		compliance	11	17L	17R	29	35L	35R	Runway	Use					
05-01-23	Mon	97%			2	1			59	38	0		91%				38	53				5	4	0	
05-02-23	Tue	100%							59	41	0		0%									57	43	0	310-340@17-27kts,g42
05-03-23	Wed	96%			1	3			60	36	0		86%				33	53				8	6	0	
05-04-23	Thu	98%				2			60	38	0		84%				36	48				10	6	0	
05-05-23	Fri	96%			2	2			60	36	0		92%				37	55				4	4	0	
05-06-23	Sat																								
05-07-23	Sun																								
05-08-23	Mon	3%			41	56			3		0	130-230@5-9kts	45%				16	29				39	16	0	190-350@5-38kts,g58,ra
05-09-23	Tue	94%			1	5			54	40	0		86%				36	50				9	5	0	
05-10-23	Wed	95%			1	4			59	36	0		84%				32	52				10	6	0	
05-11-23	Thu	0%			46	54					0	120-140@7-13kts	100%				39	61						0	
05-12-23	Fri	90%			5	5			57	33	0		92%				43	49				2	6	0	
05-13-23	Sat																								
05-14-23	Sun																								
05-15-23	Mon	98%			1	1			55	43	0		92%				41	51				5	3	0	
05-16-23	Tue	92%			1	7			58	34	0		91%				38	53				5	4	0	
05-17-23	Wed	97%			2	1			62	35	0		91%				39	52				5	4	0	
05-18-23	Thu	95%			1	4			59	36	0		90%				38	52				6	4	0	
05-19-23	Fri	23%			37	40			19	4	0	050-360@9-23kts,g23,ra	4%				3	1				52	44	0	360-030@1-23kts,ra
05-20-23	Sat																								
05-21-23	Sun																								
05-22-23	Mon	96%			1	3			65	31	0		90%				38	52				6	4	0	
05-23-23	Tue	94%			1	5			55	39	0		91%				35	56				5	4	0	
05-24-23	Wed	100%							62	38	0		0%									58	42	0	020-070@15-25kts
05-25-23	Thu	100%							62	38	0		0%									55	45	0	010-040@9-17kts
05-26-23	Fri	94%			2	4			60	34	0		93%				39	54				3	4	0	
05-27-23	Sat																								
05-28-23	Sun																								
05-29-23	Mon	77%			5	18			57	20	0		99%				32	67				1		0	
05-30-23	Tue	94%			1	5			60	34	0		90%				35	55				5	5	0	
05-31-23	Wed	97%			2	1			63	34	0		88%				34	54				8	4	0	

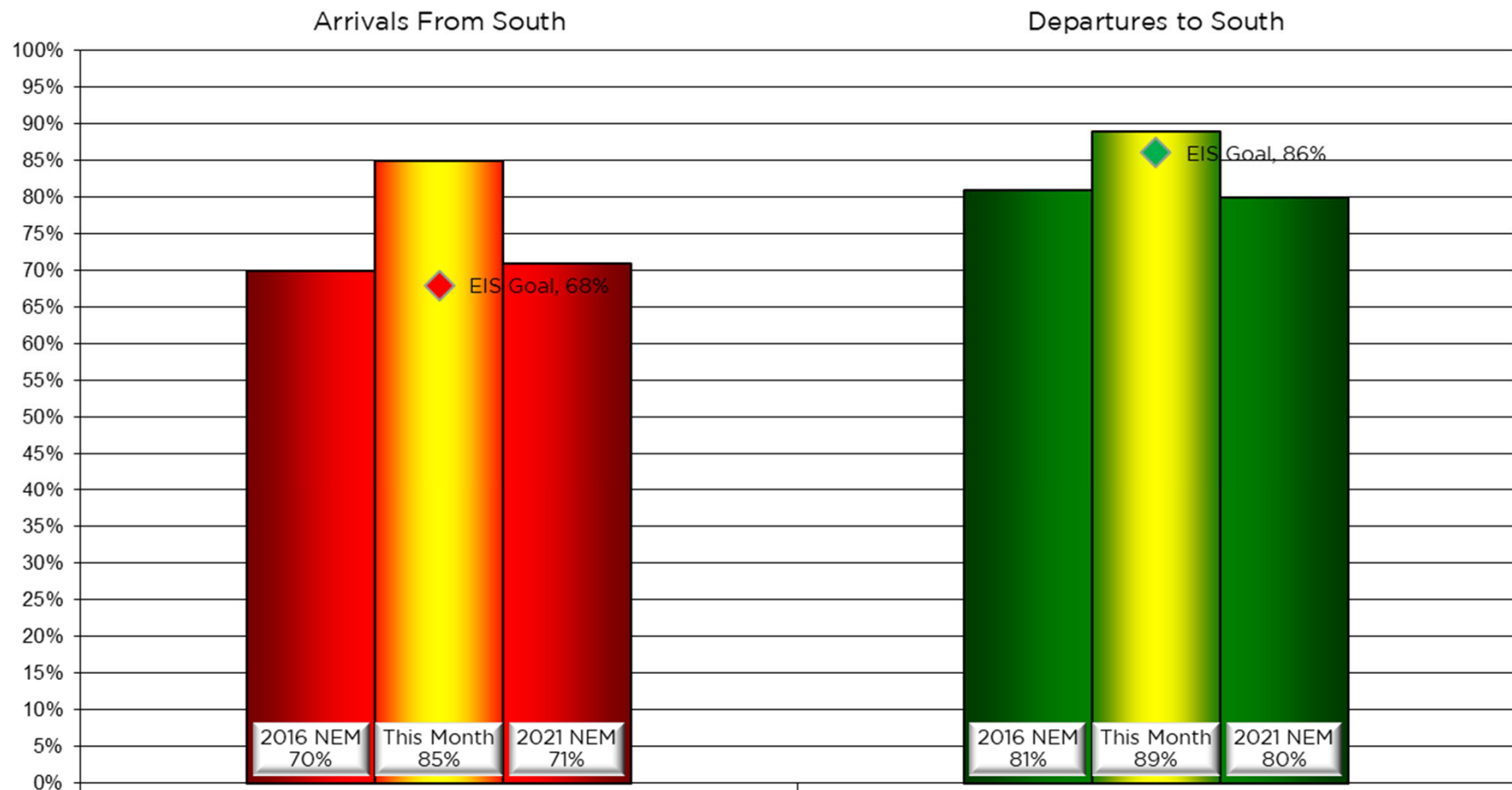
Preferred Flow

DATIS Reported Conditions Indicate  
Support for Non-Preferred Flow

DATIS Reported Conditions Do Not Indicate  
Support for Non-Preferred Flow



## Monthly Contraflow June 1-30, 2023



# Nightly Runway Use Summary - June 2023

(from 10:00 PM date list in first column to 7:00 AM the following morning)

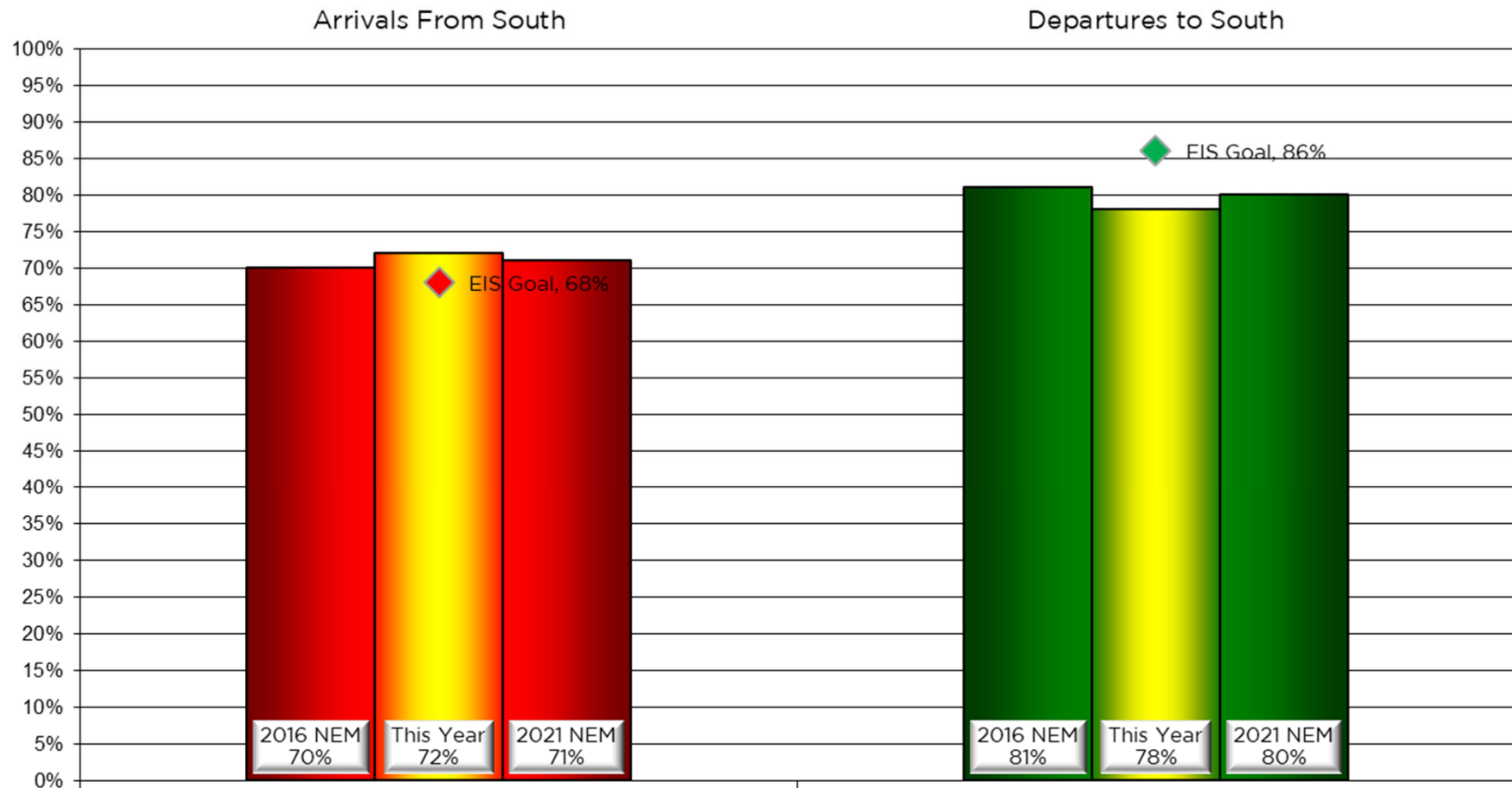
		% of all arrivals from the south										% of all departures to the south											
Date	Day	* in	Runway#							Unknown	Notes / Comments	**in	Runway#							Unknown	Notes / Comments		
		compliance	11	17L	17R	29	35L	35R	Runway	Use		compliance	11	17L	17R	29	35L	35R	Runway	Use			
06-01-23	Thu	95%			2	3			57	38	0		91%			37	54			5	4	0	
06-02-23	Fri	97%			1	2			57	40	0		96%			37	59			3	1	0	
06-03-23	Sat																						
06-04-23	Sun																						
06-05-23	Mon	97%			2	1			59	38	0		90%			43	47			6	4	0	
06-06-23	Tue	98%			1	1			64	34	0		68%			28	40			13	19	0	
06-07-23	Wed	95%			1	4			61	34	0		87%			32	55			7	6	0	
06-08-23	Thu	95%			1	4			55	40	0		92%			38	54			5	3	0	
06-09-23	Fri	96%			2	2			62	34	0		94%			41	53			3	3	0	
06-10-23	Sat																						
06-11-23	Sun																						
06-12-23	Mon	0%			44	56					0	200-260@9-11kts	100%			43	57					0	
06-13-23	Tue	0%			39	61					0	220-240@19-25kts,g40	100%			40	60					0	
06-14-23	Wed	97%			1	2			61	36	0		88%			34	54			7	5	0	
06-15-23	Thu	97%			1	2			61	36	0		57%			23	34			24	19	0	
06-16-23	Fri	93%			1	6			62	31	0		97%			45	52			2	1	0	
06-17-23	Sat																						
06-18-23	Sun																						
06-19-23	Mon	92%			1	7			54	38	0		88%			33	55			8	4	0	
06-20-23	Tue	96%			1	3			58	38	0		88%			34	54			6	6	0	
06-21-23	Wed	95%			1	4			53	42	0		88%			31	57			6	6	0	
06-22-23	Thu	97%			2	1			60	37	0		87%			35	52			8	5	0	
06-23-23	Fri	95%			1	4			64	31	0		96%			47	49			3	1	0	
06-24-23	Sat																						
06-25-23	Sun																						
06-26-23	Mon	94%			1	5			57	37	0		89%			34	55			6	5	0	
06-27-23	Tue	97%			1	2			61	36	0		86%			37	49			8	6	0	
06-28-23	Wed	95%			2	3			59	36	0		91%			37	54			6	3	0	
06-29-23	Thu	65%			12	23			41	24	0		98%			36	62			1	1	0	
06-30-23	Fri	91%			2	7			60	31	0		96%			40	56			1	3	0	

Preferred Flow

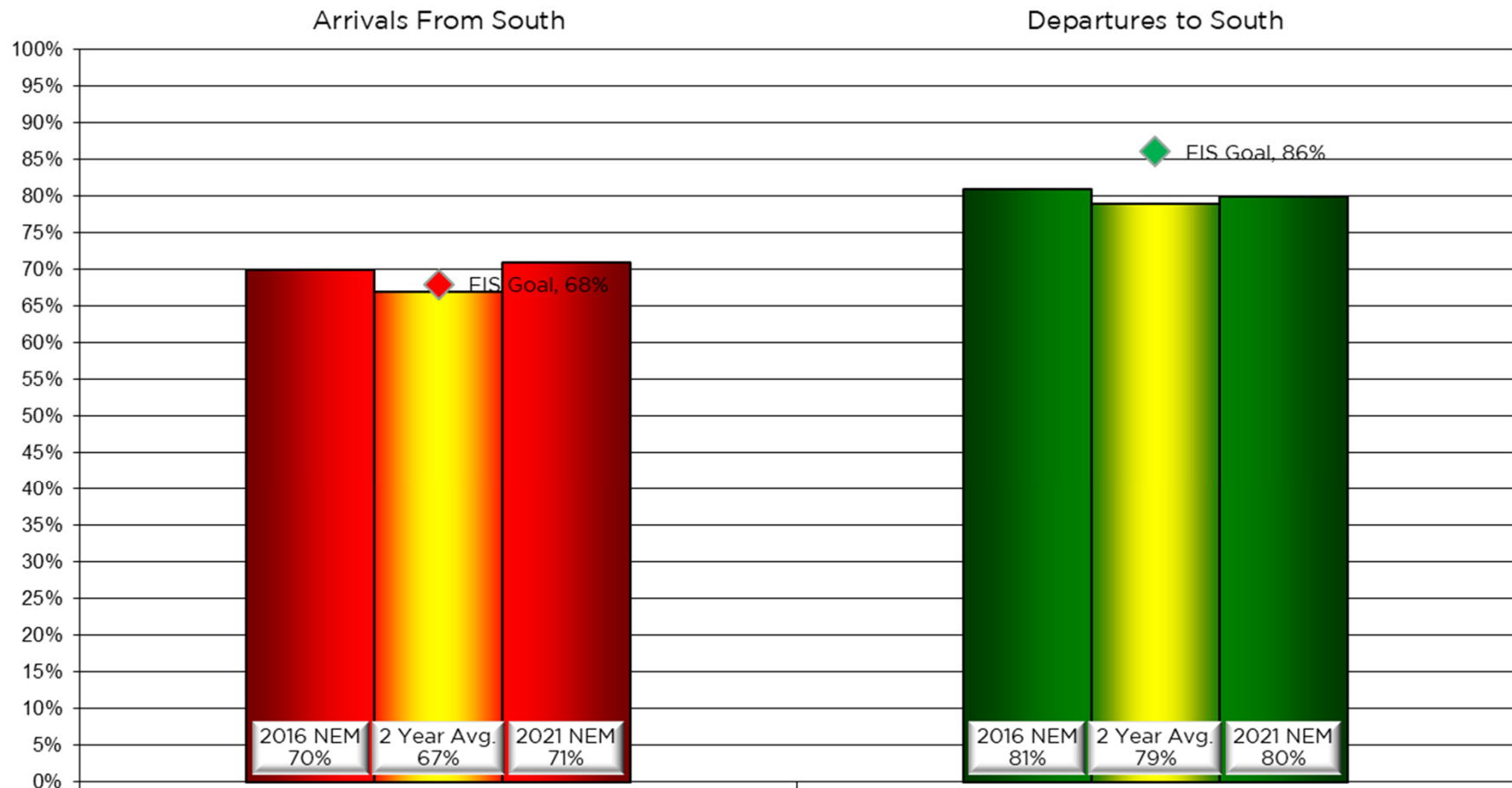
DATIS Reported Conditions Indicate  
Support for Non-Preferred Flow

DATIS Reported Conditions Do Not Indicate  
Support for Non-Preferred Flow

## Contraflow This Year As of June 30, 2023



## Contraflow 2 Year Average July 2021 - June 2023



# Year-to-Year by Month Percent\*

## Contraflow

Arrivals From the South (Goal 68%)										Departures to the South (Goal 86%)									
	2016	2017	2018	2019	2020	2021	2022	2023	Avg		2016	2017	2018	2019	2020	2021	2022	2023	Avg
Jan	69%	65%	60%	75%	56%	71%	78%	67%	68%		69%	61%	72%	69%	82%	71%	65%	75%	71%
Feb	80%	58%	67%	78%	78%	87%	67%	62%	72%		67%	77%	70%	57%	43%	45%	56%	72%	61%
Mar	63%	79%	84%	82%	65%	51%	62%	59%	68%		77%	62%	61%	89%	64%	77%	77%	70%	72%
Apr	86%	56%	73%	65%	71%	62%	64%	76%	69%		73%	80%	72%	82%	69%	75%	82%	88%	78%
May	62%	75%	43%	65%	71%	71%	51%	84%	65%		80%	80%	89%	90%	90%	63%	83%	73%	81%
Jun	79%	74%	74%	50%	69%	65%	67%	85%	70%		83%	93%	91%	91%	88%	84%	70%	89%	86%
Jul	59%	85%	90%	75%	72%	70%	55%		73%		91%	85%	77%	87%	91%	76%	95%		85%
Aug	76%	79%	72%	88%	82%	74%	78%		79%		90%	90%	88%	89%	87%	88%	89%		89%
Sep	88%	85%	80%	83%	83%	63%	91%		84%		93%	31%	87%	77%	85%	90%	75%		76%
Oct	81%	81%	77%	79%	71%	69%	68%		77%		81%	82%	76%	78%	72%	76%	78%		77%
Nov	74%	69%	76%	70%	51%	61%	60%		65%		77%	75%	54%	72%	78%	81%	86%		76%
Dec	75%	74%	72%	76%	67%	56%	53%		66%		62%	74%	61%	72%	69%	80%	88%		73%
Avg	74%	73%	72%	74%	70%	67%	66%	72%			79%	74%	75%	79%	77%	76%	79%	78%	

# NOISE COMMENT REPORT

## LOUISVILLE REGIONAL AIRPORT AUTHORITY



May 2023

# Comments (SDF/LOU)

## May 2023

Street	Zip Code	CNF Quad / 2021 DNL	Time Received	Time	Airport	Disturbance Type	Status	Operation or Comment Type <sup>1</sup>	Deviation Type <sup>2</sup>	Comments <sup>3</sup>	Number of Contacts
York River RD	40214	SW (<60)	2023-05-02 05:45:00	2023-05-02 05:45:00	SDF	Aircraft Off Course	Investigated	Standard	None	Woken early this morning by UPS planes banking and turning early on the west runway. Same thing. Seems to be destination related. It is like double noise, they takeoff and fly back over the house. Seems like they are really cranked up this morning rattling the windows and over 70 dB in the bedroom. (Representative of 1 additional comment received within the hour.)	2
Greenwell Ford Rd	40047	SE (<60)	2023-05-03 06:30:00	2023-05-02 22:10:00	SDF	Too Much Noise	Investigated	Standard	None	I would like to know if there was a valid legitimate airplane flying over my house about 20 times last night. It started at about 10:10 p.m. and went on until midnight. It went directly back and forth over my house. It kept me awake for several hours last night and I don't know why UPS would be flying directly over my house.	1
Bradley Ave	40217	NE (60-65)	2023-05-04 02:19:00	2023-05-04 02:19:00	SDF	Noise At Wrong Time	Investigated	Standard	None	Trying to find out the reason for the planes taking off to the north. There is almost no wind tonight.	1

1. **Standard:** Indicates the “Most Preferred” runway configuration was being utilized at the time of the comment.  
**Non-Standard:** Indicates that a “Lesser Preferred” runway configuration was being utilized at the time of the comment.  
**QHP:** QuieterHome Program
2. This column is used to indicate the conditions which most likely necessitated a deviation from the standard procedures.
3. Comments may be edited for space, format, or unrelated content.

# Comments (SDF/LOU)

## May 2023

Street	Zip Code	CNF Quad / 2021 DNL	Time Received	Time	Airport	Disturbance Type	Status	Operation or Comment Type <sup>1</sup>	Deviation Type <sup>2</sup>	Comments <sup>3</sup>	Number of Contacts
York River RD	40214	SW (<60)	2023-05-12 05:43:00	2023-05-05 02:30:00	SDF	Aircraft Off Course	Investigated	Standard	None	It started here a couple of months ago and it seems like they are getting louder and louder every day. I know you told me the quick elevation takeoffs have not started yet but I find that hard to be true because these planes are nose up and at 2000' or 3000' over top of my house banking and turning. I guess we can discuss this at the next meeting, but they are starting at 2:30 a.m. and they are just so loud now. It is getting worse. Neighbors are saying the same thing also. I am going to start having them call in.	1

1. **Standard:** Indicates the “Most Preferred” runway configuration was being utilized at the time of the comment.  
**Non-Standard:** Indicates that a “Lesser Preferred” runway configuration was being utilized at the time of the comment.  
**QHP:** QuieterHome Program
2. This column is used to indicate the conditions which most likely necessitated a deviation from the standard procedures.
3. Comments may be edited for space, format, or unrelated content.



# Comments (SDF/LOU)

## May 2023

Street	Zip Code	CNF Quad / 2021 DNL	Time Received	Time	Airport	Disturbance Type	Status	Operation or Comment Type <sup>1</sup>	Deviation Type <sup>2</sup>	Comments <sup>3</sup>	Number of Contacts
Kings Hwy	40205	N/A	2023-05-08 10:21:00	2023-05-07 08:52:00	LOU	Too Much Noise	Investigated	Standard	None	I will start by saying that I know this past weekend was Derby, but we found the noise level from the planes and jets leaving on Sunday, 5/7/23 was unacceptable. The size of the aircraft and amount of noise emitted was very disturbing. The tower shouldn't allow these types of aircraft to fly over a highly populated residential area when there are alternative runways that should be used. The planes could easily take off and fly over Big Spring CC, Seneca golf course, or the Watterson / I-264. I hope in the future the tower, pilots, and anyone else that is a decision maker will consider the residential owners and the noise level from such aircraft. An alternative to having these large aircraft use Bowman Field is to have them use Clark County airport. Here are just 2 of the many planes and jets taking off over Kings Highway that produced excessive noise. 1. 5/7/23, 8:52 am, Registration N608MM, Cessna 525 Citation Jet. 2. 5/7/23, 8:55 am, C560, Cessna 560 Citation Ultra.	1
York River RD	40214	SW (<60)	2023-05-10 05:51:00	2023-05-10 03:00:00	SDF	Aircraft Off Course	Investigated	Standard	None	I am complaining about the UPS takeoffs this morning starting at about 3:00 a.m. Banking and turning WSW on the west runway. Had reading of well over 80 dBs in the bedroom. Some are louder than others. No weather, calm they are departing to the south. I don't know why they do not go north as well.	1

1. **Standard:** Indicates the "Most Preferred" runway configuration was being utilized at the time of the comment.  
**Non-Standard:** Indicates that a "Lesser Preferred" runway configuration was being utilized at the time of the comment.  
**QHP:** QuieterHome Program
2. This column is used to indicate the conditions which most likely necessitated a deviation from the standard procedures.
3. Comments may be edited for space, format, or unrelated content.

# Comments (SDF/LOU)

## May 2023

Street	Zip Code	CNF Quad / 2021 DNL	Time Received	Time	Airport	Disturbance Type	Status	Operation or Comment Type <sup>1</sup>	Deviation Type <sup>2</sup>	Comments <sup>3</sup>	Number of Contacts
York River RD	40214	SW (<60)	2023-05-11 05:46:00	2023-05-11 02:30:00	SDF	Aircraft Off Course	Investigated	Standard	None	Woke up early this morning at 2:30 a.m. by a couple of flights banking and turning early. About an hour later they started about one every one to two minutes. Some fly straight, some are banking and turning but this is just UPS doing what they want trying to get on schedule. Typical morning, we are not getting enough sleep. They don't even get to the end of the runway, and they are already banking and turning over my house. I have data to prove it.	1
York River RD	40214	SW (<60)	2023-05-13 07:37:00	2023-05-13 03:30:00	SDF	Aircraft Off Course	Investigated	Standard	None	Awoken again this morning as every morning (starting at 3:30 a.m. and 2-3 minutes apart) by UPS takeoffs from west runway banking turning west southwest. UPS cargo jets become airborne and start banking 1/2 way down the runway which puts their flight path under 1 mile to our neighborhood of Yorktown North and the back of my house. This causes windows to rattle and inside noise decibels above 80 dBs in the bedroom at 3:30 in the morning AND AGAIN one plane every 2-3 minutes - NO WEATHER related issues. There has been a noticeable increase and UPS takeoffs are louder and gaining altitude quicker (nose up) before they power back. I have data to prove this using the flight tracker 24 app as well.	1

1. **Standard:** Indicates the "Most Preferred" runway configuration was being utilized at the time of the comment.  
**Non-Standard:** Indicates that a "Lesser Preferred" runway configuration was being utilized at the time of the comment.  
**QHP:** QuieterHome Program
2. This column is used to indicate the conditions which most likely necessitated a deviation from the standard procedures.
3. Comments may be edited for space, format, or unrelated content.

# Comments (SDF/LOU)

## May 2023

Street	Zip Code	CNF Quad / 2021 DNL	Time Received	Time	Airport	Disturbance Type	Status	Operation or Comment Type <sup>1</sup>	Deviation Type <sup>2</sup>	Comments <sup>3</sup>	Number of Contacts
Briar Hill Rd	40206	NA	2023-05-17 11:45:00	2023-05-17 11:30:00	LOU	Aircraft Too Low	Investigated	Non-Standard	Ops	Planes doing touch-and-go's over here need to adjust their pattern. They are too low, and we are getting too many airplanes.	1
Bradley Ave	40217	NE (60-65)	2023-05-22 02:55:00	2023-05-22 02:55:00	SDF	Noise At Wrong Time	Investigated	Non-Standard	None	All inbound flights have subsided for Sunday night, and they are having flights depart to the north. There is zero wind. A UPS flight to Dublin Ireland just departed to the north at 2:47 a.m.	1
Clarks Ln	40217	NE (60-65)	2023-05-22 15:39:00	2023-05-22 15:39:00	SDF	Other	Investigated	Standard	None	My son just bought a house in the area of the airport. If I put some insulation in the walls, can I get the cost reimbursed from the airport.	1
York River RD	40214	SW (<60)	2023-05-23 05:38:00	2023-05-23 05:38:00	SDF	Aircraft Off Course	Investigated	Standard	None	UPS flights departing the west runway banking and turning WSW. I have some screenshots of the flight path they are taking and the noise they are creating. Some are going straight. Some are banking and some are not. The ones that do bank cause the loudest noise and I have data to prove that.	1
York River RD	40214	SW (<60)	2023-05-24 05:41:00	2023-05-24 03:30:00	SDF	Aircraft Off Course	Investigated	Standard	None	They started banking and turning early on the west runway this morning at about 3:30 a.m. At least 40 or 50 flights every one to two minutes. Had decibel reading of well over 70 in the bedroom. I would be glad to share this data with you. We have an issue and I know it is being addressed but I just want to go on record with a complaint.	1

1. **Standard:** Indicates the “Most Preferred” runway configuration was being utilized at the time of the comment.  
**Non-Standard:** Indicates that a “Lesser Preferred” runway configuration was being utilized at the time of the comment.  
**QHP:** QuieterHome Program
2. This column is used to indicate the conditions which most likely necessitated a deviation from the standard procedures.
3. Comments may be edited for space, format, or unrelated content.

# Comments (SDF/LOU)

## May 2023

Street	Zip Code	CNF Quad / 2021 DNL	Time Received	Time	Airport	Disturbance Type	Status	Operation or Comment Type <sup>1</sup>	Deviation Type <sup>2</sup>	Comments <sup>3</sup>	Number of Contacts
Delor AV	40217	NE (60-65)	2023-05-25 07:56:00	2023-05-25 03:30:00	SDF	Constant Noise	Investigated	Non-Standard	Weather	These planes are starting to take my health. They have been flying over since Oaks Day. 2 Sundays, last Sunday, it is just so bad. I did not even know UPS had that many planes. They are right over the top of our house. It has me exhausted because I cannot sleep.	1
York River RD	40214	SW (<60)	2023-05-27 05:51:00	2023-05-27 05:51:00	SDF	Aircraft Off Course	Investigated	Standard	None	Woken early this morning with UPS planes taking off, banking and turning WSW off the west runway. They do not even wait until the end of the runway before they start turning. It wakes us up early over here in the neighborhood. It is one every 1 to 2 minutes.	1

1. **Standard:** Indicates the “Most Preferred” runway configuration was being utilized at the time of the comment.  
**Non-Standard:** Indicates that a “Lesser Preferred” runway configuration was being utilized at the time of the comment.  
**QHP:** QuieterHome Program
2. This column is used to indicate the conditions which most likely necessitated a deviation from the standard procedures.
3. Comments may be edited for space, format, or unrelated content.

# Comments (SDF/LOU)

## May 2023

Street	Zip Code	CNF Quad / 2021 DNL	Time Received	Time	Airport	Disturbance Type	Status	Operation or Comment Type <sup>1</sup>	Deviation Type <sup>2</sup>	Comments <sup>3</sup>	Number of Contacts
York River RD	40214	SW (<60)	2023-05-30 11:24:00	2023-05-30 02:30:00	SDF	Aircraft Off Course	Investigated	Standard	None	<p>This is a sample of one from this morning. It is an example of what we see every day during normal non-weather events. It starts at 2:30 a.m. and goes on till 5:00 a.m. with a UPS departure every 1-2 minutes. No way to sleep, wakes residents in Yorktown North every morning. Also, in the afternoons we have noise issues from 3:30 p.m. till 6:00 p.m. (1 -2 minutes apart) you cannot have a casual conversation with anyone when they are taking off. THIS IS THE PREFERRED takeoff departure runway for UPS. The issue we have with UPS departures from west runway south banking and turning some even before end of runway. Forget DNL, the end of the runway is 1.5 miles to back of my house measured with google maps. The measured distance to the flight path taken by the flighttracker24 flying over the white warehouse in picture measured is .5 to .7 miles from back of my house. Noise levels of over 70 dB INSIDE MY HOUSE given that 70-80 percent (mostly UPS) are departures from west runway south. The distances to Yorktown North and back of my house are closer to the UPS planes, almost twice as close as the neighborhoods receiving mitigation. We can talk DNL all day, but these are facts, we cannot wait for another study. We need help with the noise now. Especially with the early a.m. takeoffs.</p>	1

1. **Standard:** Indicates the “Most Preferred” runway configuration was being utilized at the time of the comment.  
**Non-Standard:** Indicates that a “Lesser Preferred” runway configuration was being utilized at the time of the comment.  
**QHP:** QuieterHome Program
2. This column is used to indicate the conditions which most likely necessitated a deviation from the standard procedures.
3. Comments may be edited for space, format, or unrelated content.

# Comments (SDF/LOU)

## May 2023

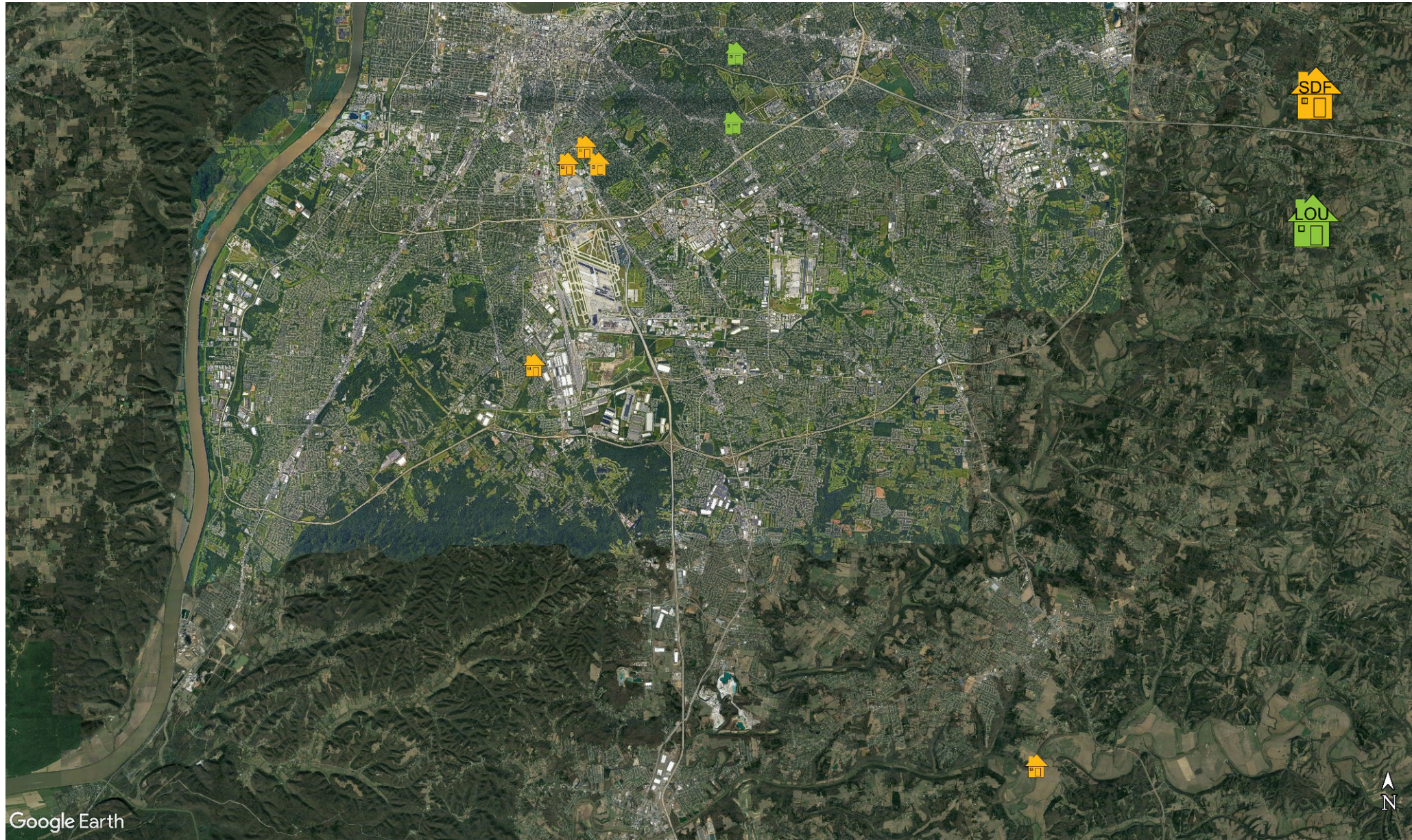
Street	Zip Code	CNF Quad / 2021 DNL	Time Received	Time	Airport	Disturbance Type	Status	Operation or Comment Type <sup>1</sup>	Deviation Type <sup>2</sup>	Comments <sup>3</sup>	Number of Contacts
York River RD	40214	SW (<60)	2023-05-30 04:52:00	2023-05-30 03:00:00	SDF	Aircraft Off Course	Investigated	Standard	None	These UPS planes off the west runway are banking and turning halfway up the runway. I have noise readings of close to 80 dB in my bedroom with the window shut. It started at 3:00 a.m. this morning. Right now, there is one every two minutes shaking and rattling the house.	1
York River RD	40214	SW (<60)	2023-05-31 05:50:00	2023-05-31 03:00:00	SDF	Aircraft Off Course	Investigated	Standard	None	I was awakened at 3:00 a.m. this morning by a UPS jet taking off halfway, flight tracker radar has the planes banking and turning halfway up the runway. They are cutting the conner within a half or three quarters of a mile from my back door. It shakes and rattles the windows; I have 80 decibels on the noise monitor in my bedroom.	1
									Received	LRAA	19

1. **Standard:** Indicates the “Most Preferred” runway configuration was being utilized at the time of the comment.  
**Non-Standard:** Indicates that a “Lesser Preferred” runway configuration was being utilized at the time of the comment.  
**QHP:** QuieterHome Program
2. This column is used to indicate the conditions which most likely necessitated a deviation from the standard procedures.
3. Comments may be edited for space, format, or unrelated content.



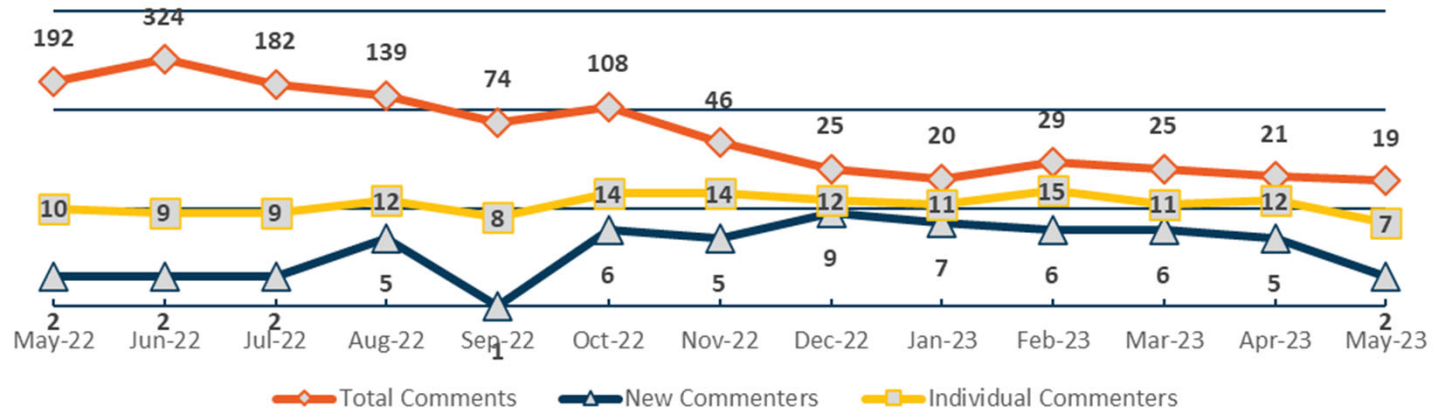
# Comment Location (SDF/LOU)

April 2023

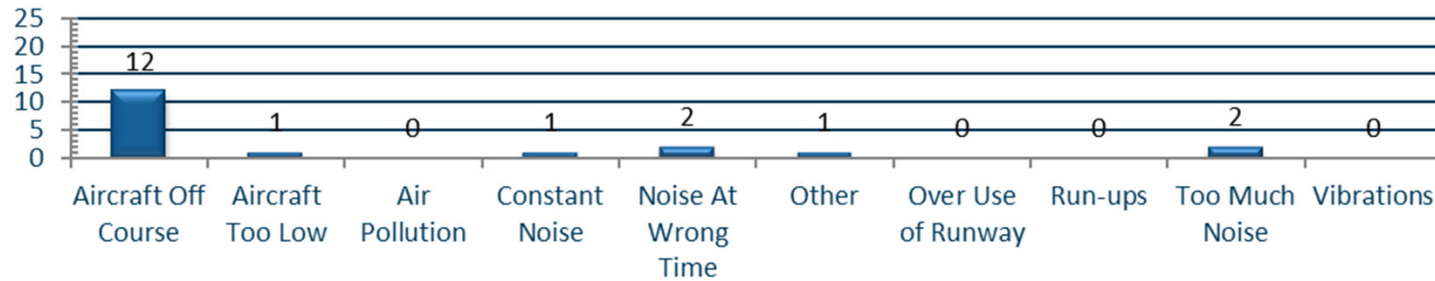




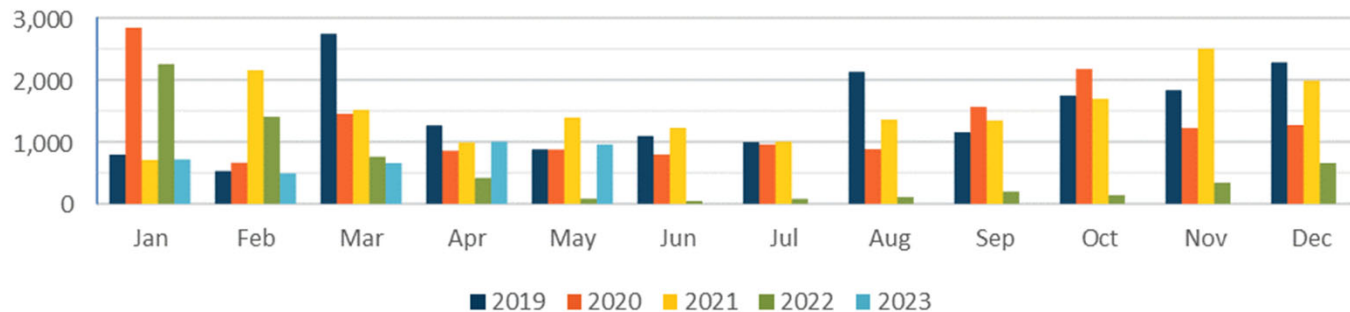
### Total, New, and Individual Comments (SDF/LOU)



### Comment Type (SDF and LOU) May 2023



### Operations Per Complaint (SDF)





# NOISE COMMENT REPORT

## LOUISVILLE REGIONAL AIRPORT AUTHORITY



June 2023

# Comments (SDF/LOU)

## June 2023

Street	Zip Code	CNF Quad / 2021 DNL	Time Received	Time	Airport	Disturbance Type	Status	Operation or Comment Type <sup>1</sup>	Deviation Type <sup>2</sup>	Comments <sup>3</sup>	Number of Contacts
York River RD	40214	SW (<60)	2023-06-01 05:35:00	2023-06-01 05:35:00	SDF	Aircraft Off Course	Investigated	Standard	None	Awoken at 3:00 a.m. starting time for the UPS planes departing again. West runway going south banking and turning wsw before the end of the runway. These planes are turning over top of Fairdale, they are not even getting to the line. I had decibel reading of over 80 in my bedroom. There is no way you can sleep with 80 decibels in your bedroom.	1
York River RD	40214	SW (<60)	2023-06-03 05:14:00	2023-06-03 05:14:00	SDF	Aircraft Off Course	Investigated	Standard	None	UPS planes are departing and turning halfway up the west runway. Same issue we have had in Yorktown North every day this week. Decibel levels over 70 to 80 in the bedroom. You know what the issue is. Just stop banking and turning and depart straight. It is all about destination and UPS flies where they want to and does what they want to.	1
York River RD	40214	SW (<60)	2023-06-06 05:36:00	2023-06-06 05:36:00	SDF	Aircraft Off Course	Investigated	Standard	None	Got woken up this morning at 3:30 with UPS planes banking and turning wsw off the west runway. Decibel readings of over 70 in the bedroom. It was an everyday thing last week and it looks like it is going to be an everyday thing this week.	1
Delor AV	40217	NE (60-65)	2023-06-06 17:49:00	2023-06-06 17:49:00	SDF	Noise At Wrong Time	Investigated	Non-Standard	Weather	We talked last week about the planes flying over my house. Well, it looks like they have doubled down. Sunday, Monday, and Today. I don't know if we need to set a noise thing and a camera on the house, but something is not right. It is getting pretty bad.	1

1. **Standard:** Indicates the "Most Preferred" runway configuration was being utilized at the time of the comment.  
**Non-Standard:** Indicates that a "Lesser Preferred" runway configuration was being utilized at the time of the comment.  
**QHP:** QuieterHome Program
2. This column is used to indicate the conditions which most likely necessitated a deviation from the standard procedures.
3. Comments may be edited for space, format, or unrelated content.

# Comments (SDF/LOU)

## June 2023

Street	Zip Code	CNF Quad / 2021 DNL	Time Received	Time	Airport	Disturbance Type	Status	Operation or Comment Type <sup>1</sup>	Deviation Type <sup>2</sup>	Comments <sup>3</sup>	Number of Contacts
York River RD	40214	SW (<60)	2023-06-07 05:38:00	2023-06-07 03:30:00	SDF	Aircraft Off Course	Investigated	Standard	None	Same as every morning with the southbound takeoffs on the west runway. UPS planes banking and turning WSW. It starts at 3:30 a.m. with decibel levels of over 30 dB in my bedroom.	1
York River RD	40214	SW (<60)	2023-06-08 05:39:00	2023-06-08 05:39:00	SDF	Aircraft Off Course	Investigated	Standard	None	UPS planes this morning 1 every 1 to 2 minutes. Banking and turning wsw off the west runway. We cannot get a good night's sleep because of it.	1
York River RD	40214	SW (<60)	2023-06-09 04:46:00	2023-06-09 03:30:00	SDF	Aircraft Off Course	Investigated	Standard	None	It started at 3:30 a.m. with UPS planes banking and turning off the west runway. Over 70 decibels in the bedroom. Can't sleep and cannot go back to sleep.	1
York River RD	40214	SW (<60)	2023-06-13 04:11:00	2023-06-13 04:11:00	SDF	Aircraft Off Course	Investigated	Non-Standard	Weather	Woken this morning by UPS flight to Orlando. It shook the whole house this morning. The other ones seem to be taking off straighter. This just cannot happen. It woke the whole family up.	1
York River RD	40214	SW (<60)	2023-06-14 00:52:00	2023-06-14 00:52:00	SDF	Vibrations	Investigated	Standard	None	The planes are going right over top of our houses here in Yorktown North. It is 1:00 a.m. and it shook the house and woke everyone up. Right over top of the house.	1
York River RD	40214	SW (<60)	2023-06-14 03:56:00	2023-06-14 03:56:00	SDF	Aircraft Off Course	Investigated	Non-Standard	Ops	These planes are banking and turning. These planes should be taking off to the north and you all know it. Stop the banking and turning over top of our neighborhood. We are unprotected over here with no sound insulation in our homes. We are just getting devastated with noise this morning. Takeoff north like you are supposed to. (Representative of 1 additional comment received within the hour.)	2

1. **Standard:** Indicates the "Most Preferred" runway configuration was being utilized at the time of the comment.  
**Non-Standard:** Indicates that a "Lesser Preferred" runway configuration was being utilized at the time of the comment.  
**QHP:** QuieterHome Program
2. This column is used to indicate the conditions which most likely necessitated a deviation from the standard procedures.
3. Comments may be edited for space, format, or unrelated content.

# Comments (SDF/LOU)

## June 2023

Street	Zip Code	CNF Quad / 2021 DNL	Time Received	Time	Airport	Disturbance Type	Status	Operation or Comment Type <sup>1</sup>	Deviation Type <sup>2</sup>	Comments <sup>3</sup>	Number of Contacts
Harrison Ave	40217	NE ((60-65)	2023-06-14 17:53:00	2023-06-14 17:53:00	SDF	Aircraft Off Course	Investigated	Non-Standard	Weather	I am calling again about your planes. We are sitting out here on the deck, and you have to send them over here when they are supposed to be going south. We cannot even get phone calls. You are lucky I am talking to you now. I do not understand why you send those jets right over the middle of the city. People cannot enjoy their house.	1
York River RD	40214	SW (<60)	2023-06-15 05:38:00	2023-06-15 05:38:00	SDF	Constant Noise	Investigated	Standard	None	Woke up at 4:00 a.m. with planes taking off from UPS. It is close to 70 dBs. Even when they depart straight the noise is just too loud over here. We are going to need something other than just flying straight off the west runway. That is just not going to work, we need some other mitigation over here.	1
Delor AV	40217	NE (60-65)	2023-06-19 17:06:00	2023-06-17 12:00:00	SDF	Too Much Noise	Investigated	Non-Standard	Ops	Saturday was my granddaughter's 1st birthday here at the house and we could not enjoy it because we had planes flying over all day. My friends and neighbors asked me how I can take this, and I have to say I don't know how I can do this anymore. You are going to have to tell me what we can do. On Father's Day Sunday the planes were flying in all day and all night long. Something is going wrong because when I bought this house over here it was not like this. Something has to be done because this is out of control.	1

1. **Standard:** Indicates the "Most Preferred" runway configuration was being utilized at the time of the comment.  
**Non-Standard:** Indicates that a "Lesser Preferred" runway configuration was being utilized at the time of the comment.  
**QHP:** QuieterHome Program
2. This column is used to indicate the conditions which most likely necessitated a deviation from the standard procedures.
3. Comments may be edited for space, format, or unrelated content.

# Comments (SDF/LOU)

## June 2023

Street	Zip Code	CNF Quad / 2021 DNL	Time Received	Time	Airport	Disturbance Type	Status	Operation or Comment Type <sup>1</sup>	Deviation Type <sup>2</sup>	Comments <sup>3</sup>	Number of Contacts
York River RD	40214	SW (<60)	2023-06-19 13:24:00	2023-06-19 03:00:00	SDF	Other	Investigated	Standard	None	I know of several residents that called into your office with complaints (one of whom is on this email) at that time and several of your responses were to them and myself: 1. UPS flights are NOT supposed to turn till the county line 2. Weather related. 3. And did you talk with Doug Black? With regards to your response this time that it is Fort Knox restricted air space R3704 is the reason for this last week "Bad Noise Event" that registered noise levels of over 80 in bedrooms. Started at 3 a.m. and lasted till 5 a.m. - with a UPS flight departing every 1-2 minutes. You have told me that Ft Knox was a no fly area anyway and that is the reason that when UPS flights depart south off 17R - ON A REGULAR DAY starting at 3 a.m. in the morning and lasting till 5 a.m. they bank and turn, some at takeoff, WSW causing decibel noise levels of 70 in the bedrooms of communities in the southwest quadrant. No weather, just a normal noise morning in the southwest quadrant. You got data to support that this 17R departures south has a target of usage at 80%??? While actual may be a little less, let's just say 60% this is still way too much noise. I have attached some pics showing that on a "normal day" with NO ABNORMALITIES - the flight paths of UPS COME NOWHERE NEAR FT Knox.	1

1. **Standard:** Indicates the "Most Preferred" runway configuration was being utilized at the time of the comment.  
**Non-Standard:** Indicates that a "Lesser Preferred" runway configuration was being utilized at the time of the comment.  
**QHP:** QuieterHome Program
2. This column is used to indicate the conditions which most likely necessitated a deviation from the standard procedures.
3. Comments may be edited for space, format, or unrelated content.

# Comments (SDF/LOU)

## June 2023

Street	Zip Code	CNF Quad / 2021 DNL	Time Received	Time	Airport	Disturbance Type	Status	Operation or Comment Type <sup>1</sup>	Deviation Type <sup>2</sup>	Comments <sup>3</sup>	Number of Contacts
York River RD	40214	SW (<60)	2023-06-20 05:14:00	2023-06-20 04:14:00	SDF	Aircraft Off Course	Investigated	Standard	None	I was woken over an hour ago with UPS planes banking and turning off the west runway. Over 70 dBs in the bedroom.	1
York River RD	40214	SW (<60)	2023-06-21 05:33:00	2023-06-21 03:30:00	SDF	Aircraft Off Course	Investigated	Standard	None	They started at about 3:30 a.m. UPS flight banking and turning off the west runway banking and turning WSW. Several are louder than others and some over 80 dBs in the bedroom. They are turning well before the county line.	1
Forum AV	40214	SW (<60)	2023-06-21 13:58:00	2023-06-21 05:28:00	SDF	Too Much Noise	Investigated	Standard	None	<p>I am not going to leave you alone because I think the noise pollution here at my house is atrocious.</p> <p>What happened out there at 5:28 a.m. this morning? What departed from UPS airport? What kind of plane was that? That was a big plane. It shook me out of bed and woke me up. It went on for a while, it did not just last 10 seconds. If that is not noise pollution that rolls someone out of bed, then I don't know what is. I don't get it; you want me to pay to soundproof my house? I don't think there is enough sound proofing to stop that noise.</p> <p>It is obviously coming from the UPS airport.</p>	1

1. **Standard:** Indicates the "Most Preferred" runway configuration was being utilized at the time of the comment.  
**Non-Standard:** Indicates that a "Lesser Preferred" runway configuration was being utilized at the time of the comment.  
**QHP:** QuieterHome Program
2. This column is used to indicate the conditions which most likely necessitated a deviation from the standard procedures.
3. Comments may be edited for space, format, or unrelated content.

# Comments (SDF/LOU)

## June 2023

Street	Zip Code	CNF Quad / 2021 DNL	Time Received	Time	Airport	Disturbance Type	Status	Operation or Comment Type <sup>1</sup>	Deviation Type <sup>2</sup>	Comments <sup>3</sup>	Number of Contacts
Sunset Rd	40206	N/A	2023-06-22 10:48:00	2023-06-21 16:00:00	LOU	Too Much Noise	Investigated	Non-Standard	Ops	I live in the flight path of planes departing and landing from Bowman Field (Sunset Road/Sunnyside Dr.). Yesterday (June 21) from 4-8 p.m. planes flew over my house every 2 minutes. It made it difficult to be outside because of the noise pollution, and the air pollution which I cannot see. This morning, in our less than 1/2 mile walk around the circle, 9 planes flew over our heads in the span of 15 minutes. I understand there is an airstrip out of commission at Bowman. However, this is my home and the constant noise of planes flying overhead is not acceptable or healthy. Are there alternate routes that can be used? Or limits to the number of intervals planes may take over my house?	1
Forum AV	40214	SW (<60)	2023-06-21 21:43:00	2023-06-21 21:43:00	SDF	Too Much Noise	Investigated	Standard	Ops	I am in my backyard and that thing has some power behind it. It can push the noise out of the tail end. It happened maybe three minutes ago.	1
York River RD	40214	SW (<60)	2023-06-22 03:40:00	2023-06-22 03:40:00	SDF	Aircraft Off Course	Investigated	Standard	None	These planes are banking and turning again this morning. We were awoken by departures on the west runway banking and turning WSW within a mile of our neighborhood. As you can see, I am awake. There was even one on the east runway that appeared to be banking and turning.	1

1. **Standard:** Indicates the “Most Preferred” runway configuration was being utilized at the time of the comment.  
**Non-Standard:** Indicates that a “Lesser Preferred” runway configuration was being utilized at the time of the comment.  
**QHP:** QuieterHome Program
2. This column is used to indicate the conditions which most likely necessitated a deviation from the standard procedures.
3. Comments may be edited for space, format, or unrelated content.

# Comments (SDF/LOU)

## June 2023

Street	Zip Code	CNF Quad / 2021 DNL	Time Received	Time	Airport	Disturbance Type	Status	Operation or Comment Type <sup>1</sup>	Deviation Type <sup>2</sup>	Comments <sup>3</sup>	Number of Contacts
York River RD	40214	SW (<60)	2023-06-23 04:10:00	2023-06-23 04:10:00	SDF	Aircraft Off Course	Investigated	Standard	None	Woke up again this morning by UPS departures on the west runway. Some are going straight, still loud, or 70 and 80 decibels in the bedroom. According to Flight Tracker it does not appear many are going off the east runway. The more east the destination the louder they are.	1
York River RD	40214	SW (<60)	2023-06-24 05:15:00	2023-06-24 05:15:00	SDF	Noise At Wrong Time	Investigated	Standard	None	Awakened every day this week by UPS flights banking and turning off the west runway. Some are straight off the runway even though the east runway is being used. This claim that they have to bank, and turn is just not true. They are a little quieter when they go straight but they are still over 70 decibels in the bedroom. Also, even off the east runway they are registering over 70 decibels in the bedroom. When they both takeoff it is even louder. So, I am going to start taking readings off the east runway also.	1
York River RD	40214	SW (<60)	2023-06-27 12:52:00	2023-06-27 02:30:00	SDF	Aircraft Off Course	Investigated	Standard	None	The Blue Dot on the Flightradar24 pic is my house This is a normal day with no issues and what the noise exposure levels the South West quadrant has on a daily basis. From as early as 2:30 a.m. till 5:30 a.m. and evenings from 4:00 p.m. till 6:00 p.m. UPS departures every 1-2 minutes off 17R (west runway). Sample size of 11 data points. Average decibel noise level is 78.8 decibels for 1-2 minutes from 3:45 a.m. - 4:01 a.m. That is 11 departures in 15 minutes.	1

1. **Standard:** Indicates the “Most Preferred” runway configuration was being utilized at the time of the comment.  
**Non-Standard:** Indicates that a “Lesser Preferred” runway configuration was being utilized at the time of the comment.  
**QHP:** QuieterHome Program
2. This column is used to indicate the conditions which most likely necessitated a deviation from the standard procedures.
3. Comments may be edited for space, format, or unrelated content.



# Comments (SDF/LOU)

## June 2023

Street	Zip Code	CNF Quad / 2021 DNL	Time Received	Time	Airport	Disturbance Type	Status	Operation or Comment Type <sup>1</sup>	Deviation Type <sup>2</sup>	Comments <sup>3</sup>	Number of Contacts
York River RD	40214	SW (<60)	2023-06-28 05:44:00	2023-06-28 03:30:00	SDF	Aircraft Off Course	Investigated	Standard	None	Woken as usual at 3:30 a.m. by the UPS planes.	1
York River RD	40214	SW (<60)	2023-06-29 03:59:00	2023-06-29 03:59:00	SDF	Aircraft Off Course	Investigated	Standard	None	UPS planes departing every 1 to 2 minutes. Banking and turning WSW instead of going straight off the runway. It wakes you up and you cannot go back to sleep. This is at 3:30 in the morning.	1
York River RD	40214	SW (<60)	2023-06-29 05:26:00	2023-06-29 05:26:00	SDF	Too Much Noise	Investigated	Standard	None	I just had 2 planes fly directly over my house. I got readings of over 80 decibels in the bedroom. It is not even 5:30 a.m. yet. These planes are waking us up at 3:30 in the morning over here. I know you said more people are complaining. So, we are going to start complaining over here. I know you said it does not help, but it is going to, it has got to.	1
Drayton Dr	40205	NA	2023-06-29 09:04:00	2023-06-29 09:04:00	LOU	Other	Investigated	Standard	None	Can you tell me the status of this easement acquisition area claim?	1

1. **Standard:** Indicates the “Most Preferred” runway configuration was being utilized at the time of the comment.  
**Non-Standard:** Indicates that a “Lesser Preferred” runway configuration was being utilized at the time of the comment.  
**QHP:** QuieterHome Program
2. This column is used to indicate the conditions which most likely necessitated a deviation from the standard procedures.
3. Comments may be edited for space, format, or unrelated content.

# Comments (SDF/LOU)

## June 2023

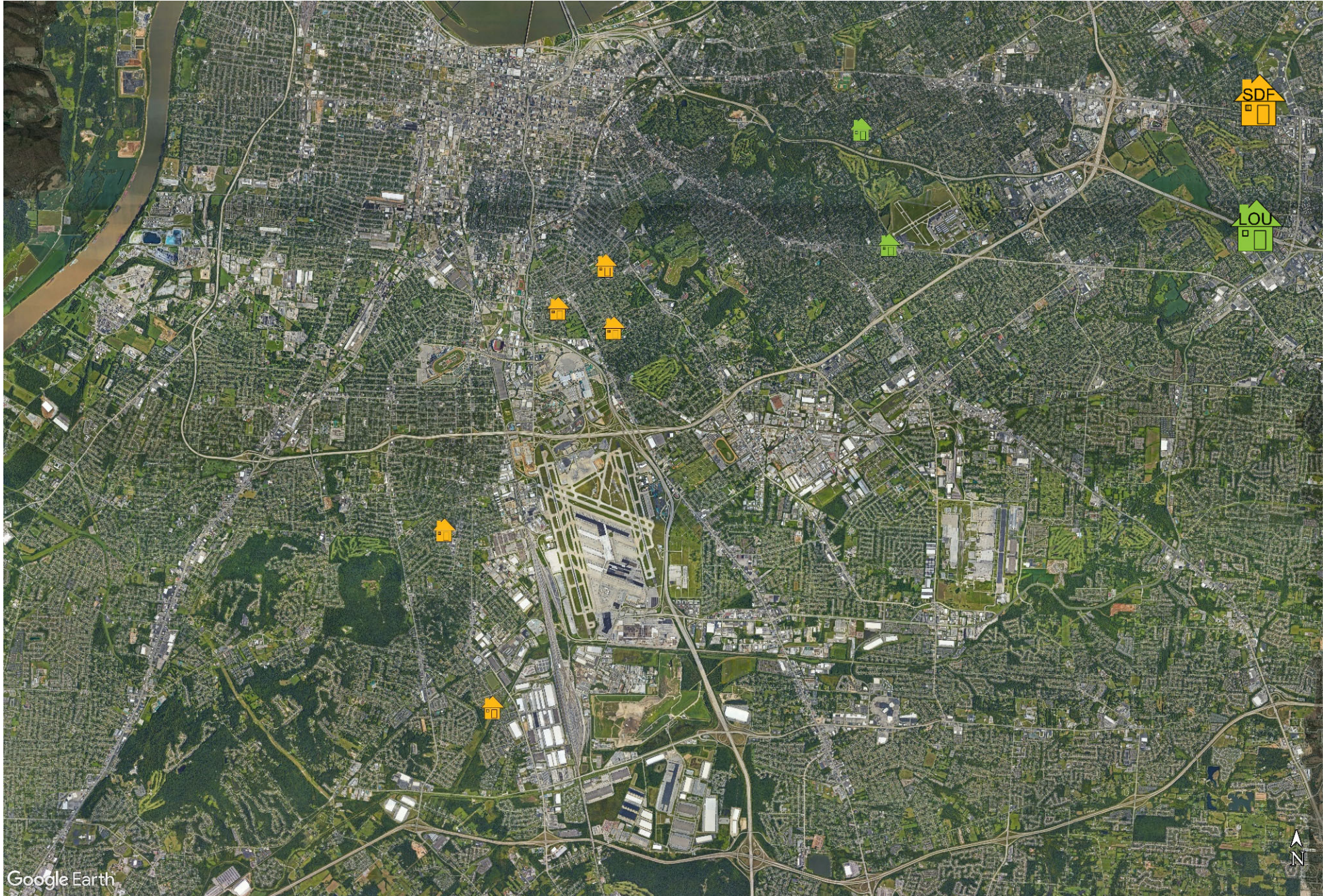
Street	Zip Code	CNF Quad / 2021 DNL	Time Received	Time	Airport	Disturbance Type	Status	Operation or Comment Type <sup>1</sup>	Deviation Type <sup>2</sup>	Comments <sup>3</sup>	Number of Contacts
Eastern Pkwy	40217	NE (<60)	2023-06-30 13:54:00	2023-06-30 13:54:00	SDF	Too Much Noise	Investigated	Non-Standard	None	It has been a while since our discussion. Thank you for sending the "sound Insulating" document. After our conversation I noticed more plane traffic near my home. UPS and commercial airlines are closer to my home on Eastern Parkway. I did file a complaint with FAA Noise Portal. I am attaching some images from the inside of my family room and on the back of my deck - planes flying close. These are flying by every 10 - 15 minutes (Day & Night) with some downtime. Has the committee rezoned the area for assistance?	1
									Received	LRAA	29

1. **Standard:** Indicates the "Most Preferred" runway configuration was being utilized at the time of the comment.  
**Non-Standard:** Indicates that a "Lesser Preferred" runway configuration was being utilized at the time of the comment.  
**QHP:** QuieterHome Program
2. This column is used to indicate the conditions which most likely necessitated a deviation from the standard procedures.
3. Comments may be edited for space, format, or unrelated content.



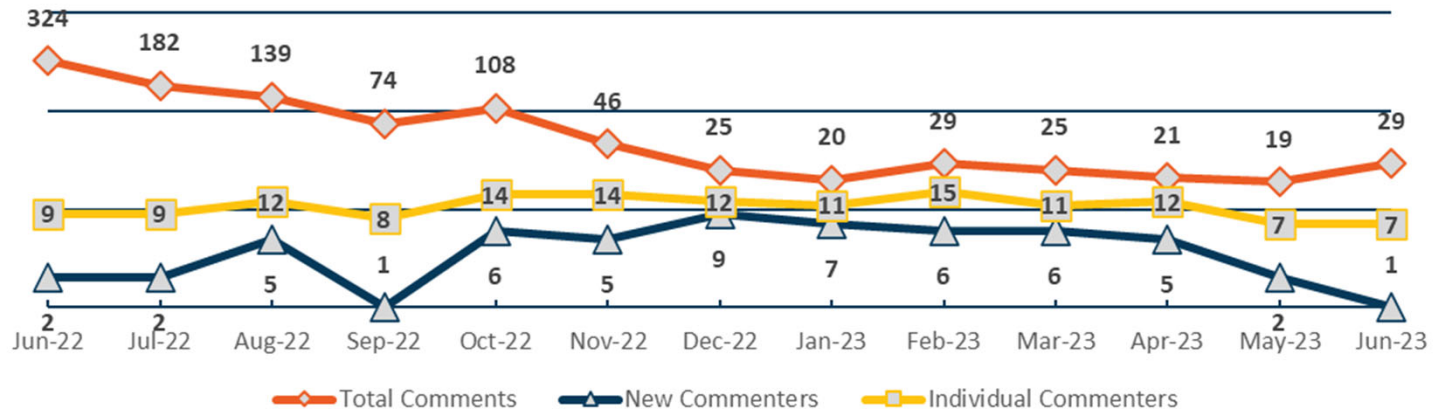
# Comment Location (SDF/LOU)

June 2023

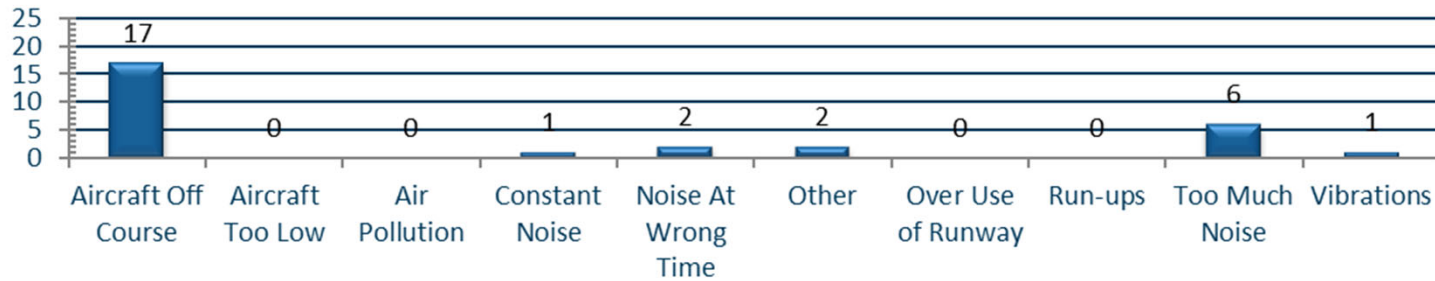




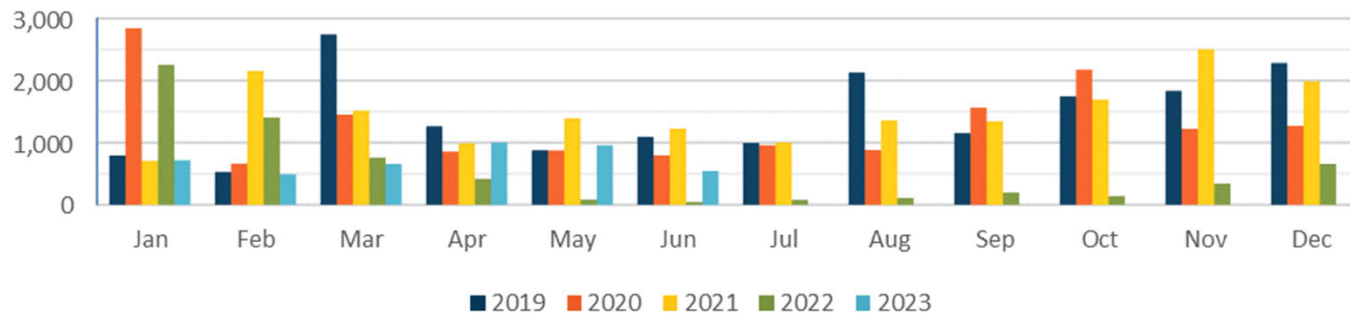
### Total, New, and Individual Comments (SDF/LOU)



### Comment Type (SDF and LOU) June 2023



### Operations Per Complaint (SDF)



# Daily Runway Use Uncorrected (SDF) May 2023

Flow	Time	Mon 5-1	Tue 5-2	Wed 5-3	Thu 5-4	Fri 5-5	Sat 5-6	Sun 5-7	Mon 5-8	Tue 5-9	Wed 5-10	Thu 5-11	Fri 5-12	Sat 5-13	Sun 5-14	Mon 5-15	Tue 5-16	Wed 5-17	Thu 5-18	Fri 5-19	Sat 5-20	Sun 5-21	Mon 5-22	Tue 5-23	Wed 5-24	Thu 5-25	Fri 5-26	Sat 5-27	Sun 5-28	Mon 5-29	Tue 5-30	Wed 5-31	Time
North Flow	0:00																																0:00
	0:30																																0:30
	1:00																																1:00
	1:30																																1:30
	2:00				X																												2:00
	2:30					X																											2:30
South Flow	3:00																																3:00
	3:30																																3:30
	4:00																																4:00
	4:30																																4:30
	5:00																																5:00
	5:30	X																															5:30
	6:00																																6:00
	6:30																																6:30
	7:00																																7:00
	7:30																																7:30
	8:00																																8:00
North Flow	9:00																																9:00
	9:30																																9:30
	10:00																																10:00
	10:30																																10:30
	11:00																																11:00
	11:30																																11:30
	12:00																																12:00
South Flow	14:00																																14:00
	14:30																																14:30
	15:00																																15:00
	15:30																																15:30
	16:00																																16:00
	16:30																																16:30
	17:00																																17:00
	17:30																																17:30
	18:00																																18:00
	18:30																																18:30
	19:00																																19:00
North Flow	22:00		X																														22:00
	22:30																																22:30
	23:00																																23:00
	23:30																																23:30
	0:00																																0:00

Preferred Flow

DATIS Reported Conditions Indicate Support for Non-Preferred Flow

DATIS Reported Conditions Do Not Indicate Support for Non-Preferred Flow

X Complaint

Source: Louisville International Airport  
Aircraft Flight Tracking and Noise Management System (AFTNMS)

# Daily Runway Use (SDF)

Tower Comments May 2023

Day	Date	Time	Comment
mon	01-May-23	0000-0200	WEST FLOW RWY 29 WIND 29015G20
tue	02-May-23	2000-2130	WEST FLOW RWY 29 WIND 27012G20
wed	03-May-23	2100-2130	NORTH FLOW FOR WIND 34013G17 EARLIER BUT SLOWING TO 31006
thu	04-May-23	1400-2130	THURBY TRAFFIC PATTERNS
fri	05-May-23		
sat	06-May-23		
sun	07-May-23		
mon	08-May-23	2200-0000	REASON UNDETERMINED
tue	09-May-23	0000-0230	REASON UNDETERMINED
wed	10-May-23		
thu	11-May-23		
fri	12-May-23		
sat	13-May-23	0900-1330	REMAINED SOUTH DUE TO GLIDESLOPE OUTAGE ON 35R AND 35L CLOSED
sun	14-May-23	1400-1500	REASON UNDETERMINED
mon	15-May-23		
tue	16-May-23		
wed	17-May-23	2000-2130	NORTH FLOW FOR WIND 01009
thu	18-May-23		
fri	19-May-23		
sat	20-May-23		
sun	21-May-23	0000-0200	NORTH FLOW (SHOULD BE MARKED AS COMPLIANT)
sun	21-May-23	0400-0730	NORTH FLOW FOR WIND 36006
sun	21-May-23	1800-0000	REMAINED NORTH FLOW FROM EARLIER WINDS 05015G19
mon	22-May-23	0000-0530	NORTH FLOW FOR WINDS 02006
tue	23-May-23		
wed	24-May-23	2000-2130	REMAINED NORTH FLOW WINDS 04012G16 SLOWING TO 04008
thu	25-May-23		
fri	26-May-23	2030-2130	NORTH FOR WINDS 06008
sat	27-May-23	2130-0000	REMAINED SOUTH FOR WINDS 09008G16 SLOWING TO 09005
sun	28-May-23	0000-0430	NORTH FLOW FOR WINDS 07006 (COMPLIANT FROM 0000-0230)
mon	29-May-23	1900-2130	REASON UNDETERMINED
tue	30-May-23		COMPLIANT
wed	31-May-23	1130-1330	REASON UNDETERMINED

# Daily Runway Use Uncorrected (SDF) June 2023

[illegible]

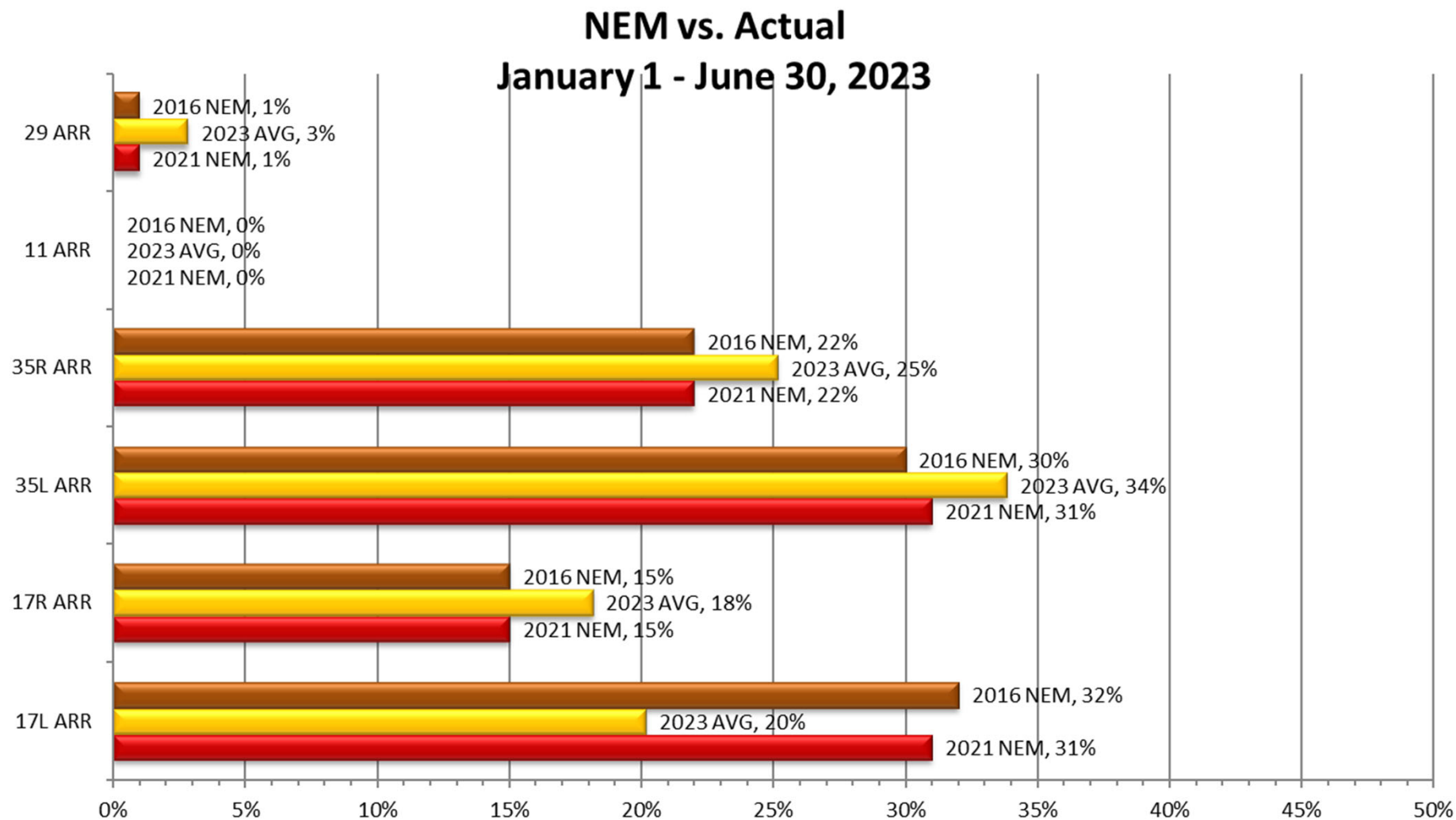
# Daily Runway Use (SDF)

Tower Comments June 2023

Day	Date	Time	Comment
Thu	01-Jun-23		
Fri	02-Jun-23	2100-2130	NORTH FLOW (WE ARE COMPLIANT)
Sat	03-Jun-23	1500-1630	NORTH DUE TO WINDS 04012
Sat	03-Jun-23	2200-0000	NORTH FLOW (WE ARE COMPLIANT)
Sun	04-Jun-23	0000-0430	NORTH FLOW (WE ARE COMPLIANT UNTIL 0230) WINDS 05005 RWY 35L CLOSED
Sun	04-Jun-23	2300-0000	NORTH FLOW (WE ARE COMPLIANT)
Mon	05-Jun-23	0000-0200	NORTH FLOW (WE ARE COMPLIANT)
Tue	06-Jun-23	2000-2200	REMAINED NORTH DUE TO WIND 30009
Wed	07-Jun-23	0630-0830	NORTH DUE TO WINDS 03009
Wed	07-Jun-23	1400-1730	REMAINED NORTH DUE TO WET RUNWAYS WIND 36003
Thu	08-Jun-23	2000-2200	UNDETERMINED
Fri	09-Jun-23		
Sat	10-Jun-23		
Sun	11-Jun-23		
Mon	12-Jun-23	2200-0000	SOUTH FLOW DUE TO R3704 HOT WITH AIRCRAFT
Tue	13-Jun-23	0000-0230	SOUTH FLOW DUE TO R3704 HOT WITH AIRCRAFT
Wed	14-Jun-23	1400-1430	REMAINED NORTH DUE TO WIND 29012G18
Thu	15-Jun-23	2030-2200	UNDETERMINED
Fri	16-Jun-23		
Sat	17-Jun-23	1500-1700	REMAINED NORTH DUE TO WIND 02008
Sun	18-Jun-23		
Mon	19-Jun-23		
Tue	20-Jun-23		
Wed	21-Jun-23	1930-2130	REMAINED NORTH DUE TO WIND 34005 AND WEATHER IN AREA
Thu	22-Jun-23	1900-2130	REMAINED NORTH FOR EARLIER WINDS 05009 SLOWING TO 03006
Fri	23-Jun-23	1400-1530	REMAINED NORTH DUE TO WIND 01007
Fri	23-Jun-23	1930-2130	UNDETERMINED
Sat	24-Jun-23	0900-1100	WINDS AT 0935L 26006 WENT NORTH AT 1034L WIND 27009
Sat	24-Jun-23	1830-0000	REMAINED NORTH FLOW FOR FORCASTED WIND 30008
Sun	25-Jun-23		
Mon	26-Jun-23		
Tue	27-Jun-23		
Wed	28-Jun-23	1400-1430	REMAINED NORTH DUE TO SMOKE AND HAZE NORTH OF THE FIELD.
Thu	29-Jun-23		
Fri	30-Jun-23	0030-0230	SOUTH FLOW AT 0047L DUE TO WIND 15009
Fri	30-Jun-23	0900-1330	REMAINED SOUTH FLOW DUE TO FORECASTED WIND 16010

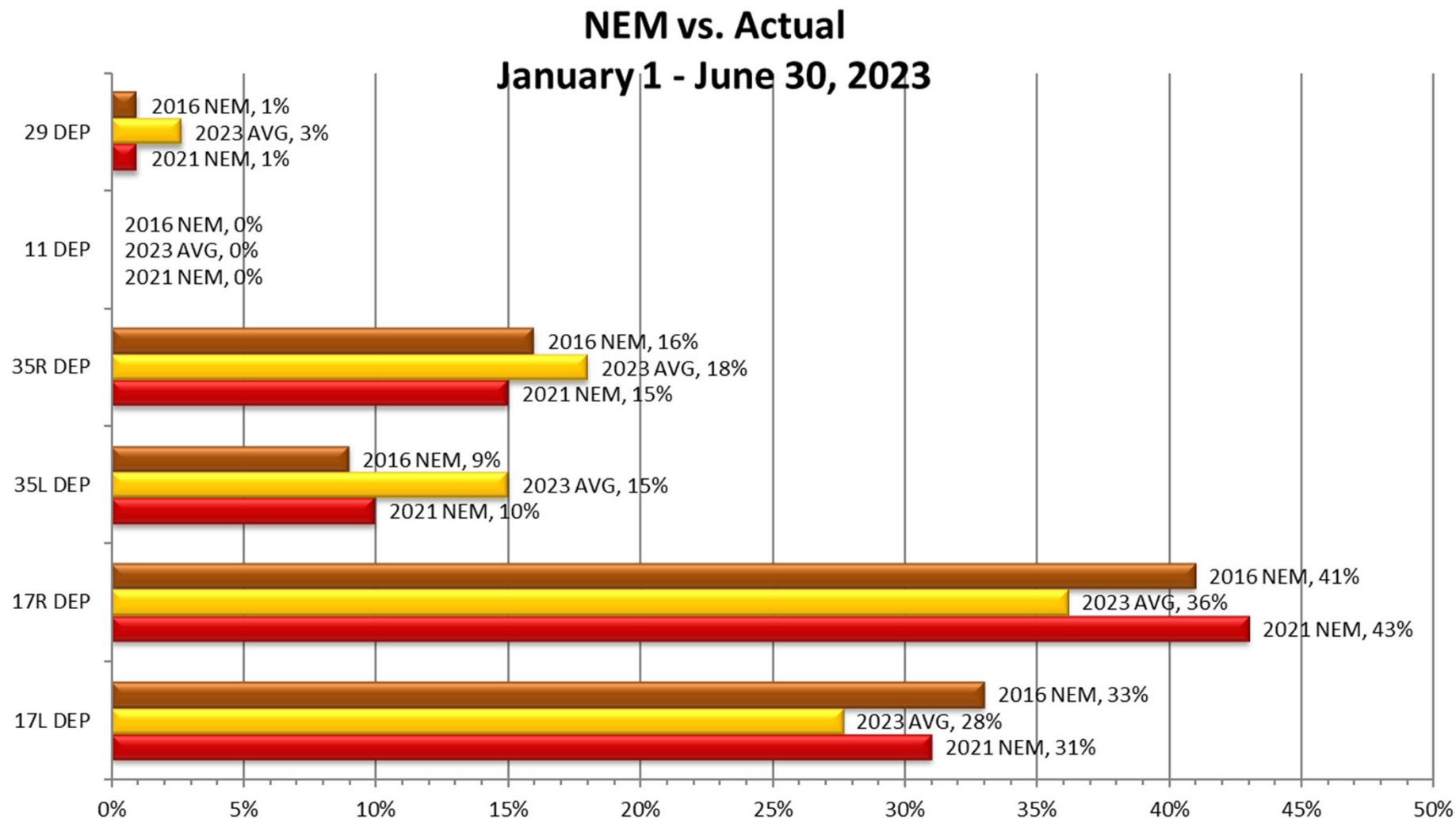


# Runway Use (SDF Arrivals)



Source: Louisville International Airport  
Aircraft Flight Tracking and Noise Management System (AFTNMS)

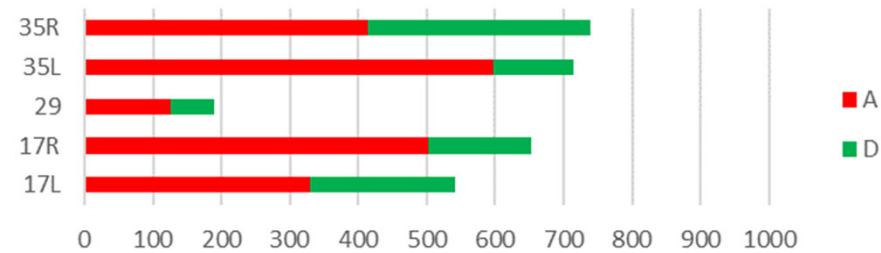
# Runway Use (SDF Departures)



Source: Louisville International Airport  
Aircraft Flight Tracking and Noise Management System (AFTNMS)

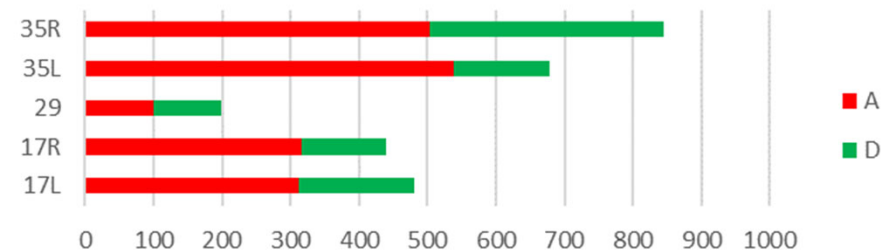
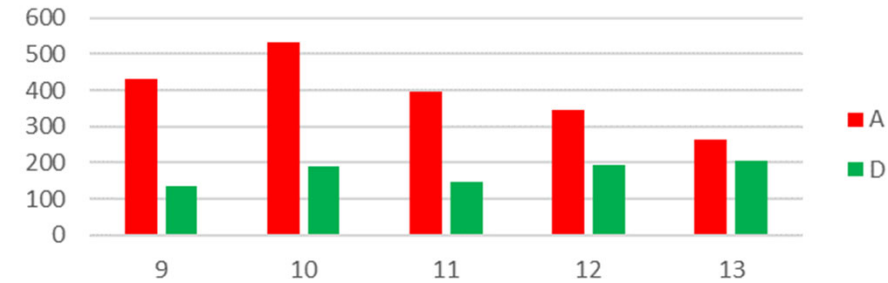
# Runway Use 0900L-1400L<sub>(SDF)</sub>

## Runway

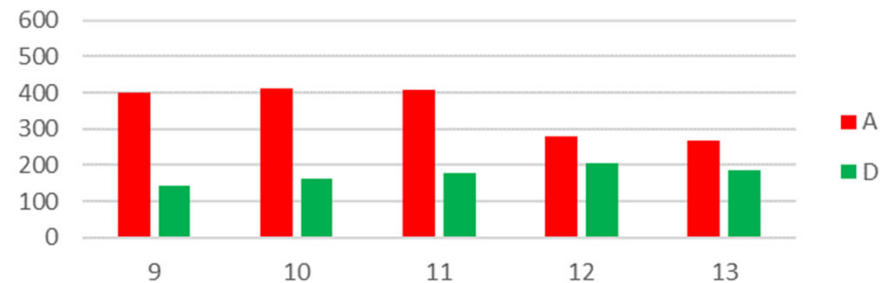


March 2023

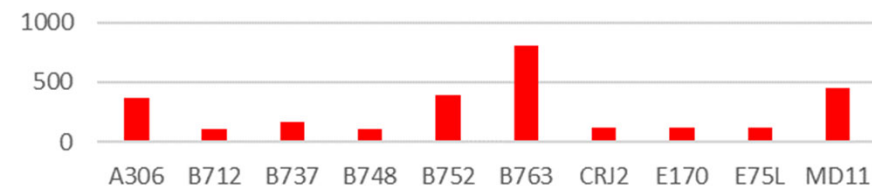
## Hour



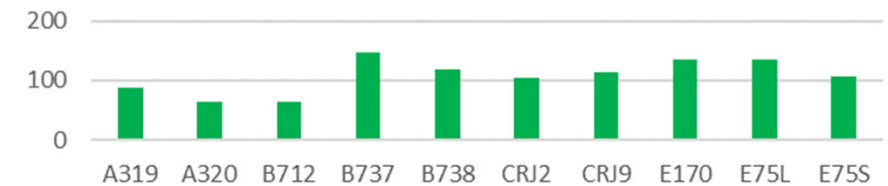
April 2023



## Top 10 Arrivals



## Top 10 Departures



# Gate Compliance by Runway

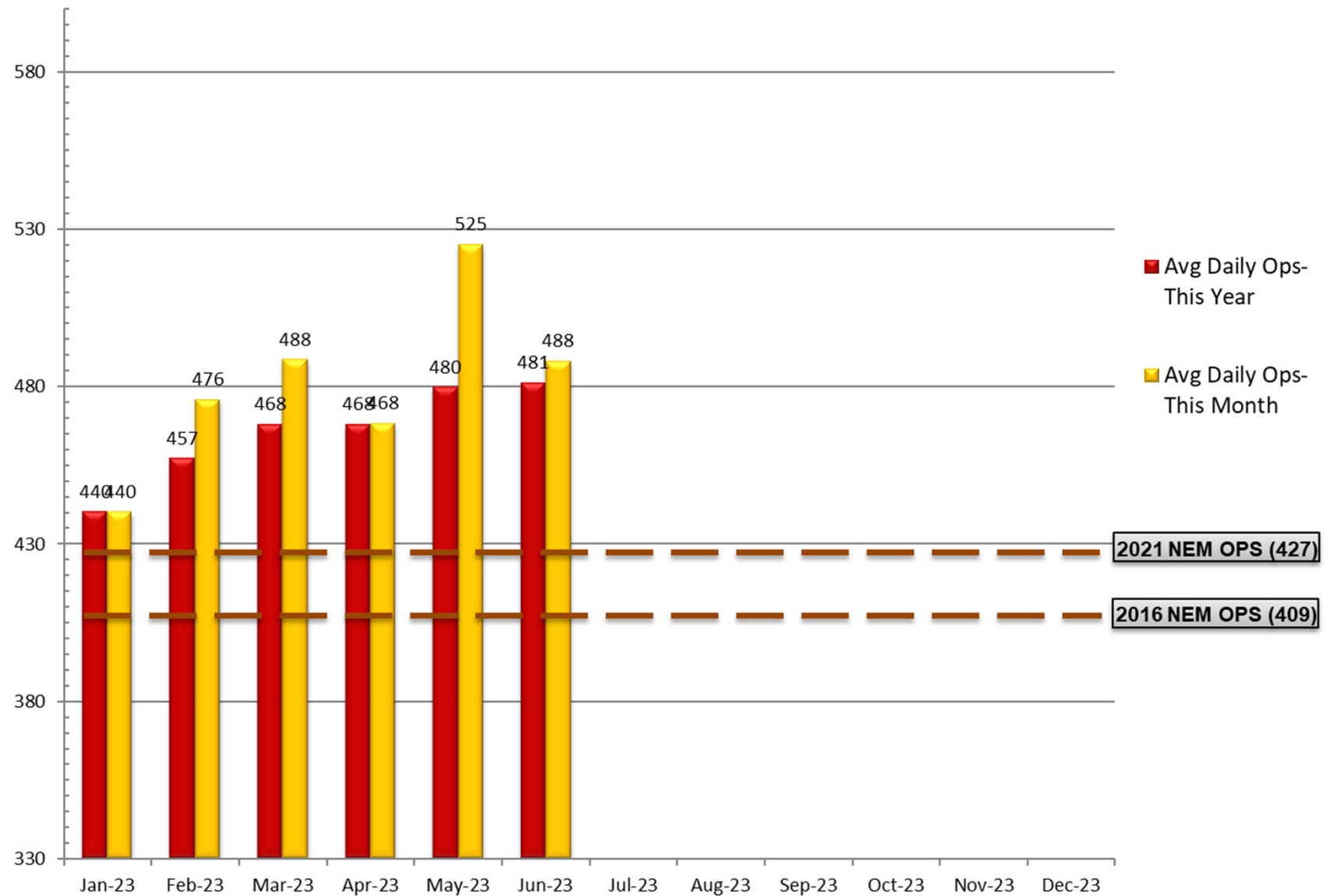
As of June 30, 2023

ARRIVALS Percent Compliant					Departure Percent Compliant					
Month	17L	17R	35L	35R	ARR AVG	17L	17R	35L	35R	DEP AVG
Jul-21	90%	94%	92%	91%	92%	82%	87%	76%	88%	83%
Aug-21	92%	95%	92%	93%	93%	82%	90%	71%	89%	83%
Sep-21	92%	93%	91%	94%	93%	79%	90%	67%	86%	81%
Oct-21	92%	95%	92%	91%	93%	78%	88%	66%	85%	79%
Nov-21	90%	94%	91%	90%	91%	74%	90%	73%	86%	81%
Dec-21	92%	97%	93%	90%	93%	68%	88%	69%	80%	76%
Jan-22	90%	96%	93%	91%	93%	74%	90%	74%	87%	81%
Feb-22	91%	96%	93%	90%	93%	64%	89%	71%	81%	76%
Mar-22	91%	96%	93%	91%	93%	72%	88%	74%	84%	80%
Apr-22	94%	95%	92%	91%	93%	75%	90%	68%	73%	77%
May-22	93%	95%	93%	93%	94%	75%	86%	74%	83%	80%
Jun-22	92%	92%	90%	91%	91%	78%	91%	68%	85%	81%
Jul-22	94%	95%	93%	94%	94%	77%	88%	66%	88%	80%
Aug-22	93%	93%	94%	94%	94%	81%	88%	70%	89%	82%
Sep-22	93%	93%	92%	93%	93%	88%	91%	71%	87%	84%
Oct-22	93%	95%	93%	92%	93%	80%	90%	68%	87%	81%
Nov-22	93%	96%	94%	92%	94%	83%	90%	73%	84%	83%
Dec-22	95%	96%	94%	93%	95%	73%	89%	74%	84%	80%
Jan-23	95%	97%	95%	94%	95%	70%	88%	65%	86%	77%
Feb-23	92%	95%	94%	92%	93%	69%	83%	64%	80%	74%
Mar-23	95%	96%	93%	93%	94%	69%	83%	68%	82%	76%
Apr-23	94%	95%	92%	92%	93%	77%	86%	70%	85%	80%
May-23	93%	95%	92%	93%	93%	82%	85%	72%	85%	81%
Jun-23	94%	93%	94%	95%	94%	86%	84%	70%	89%	82%
24 Month Avg.					93%					80%

Source: Louisville International Airport  
Aircraft Flight Tracking and Noise Management System (AFTNMS)

# Operations (SDF)

As of June 30, 2023

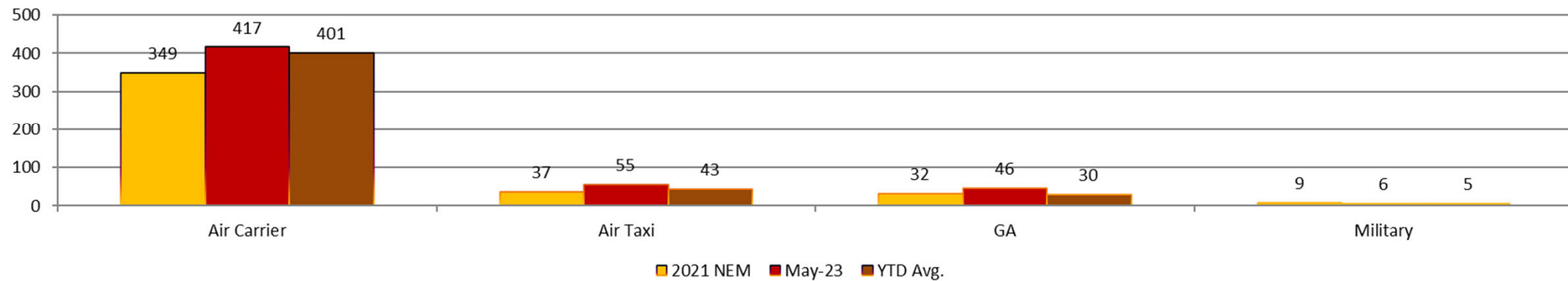


Source: Louisville <http://www.flylouisville.com/regional-airport-authority/reports-and-statistics/>

# Operations and Landings (SDF)

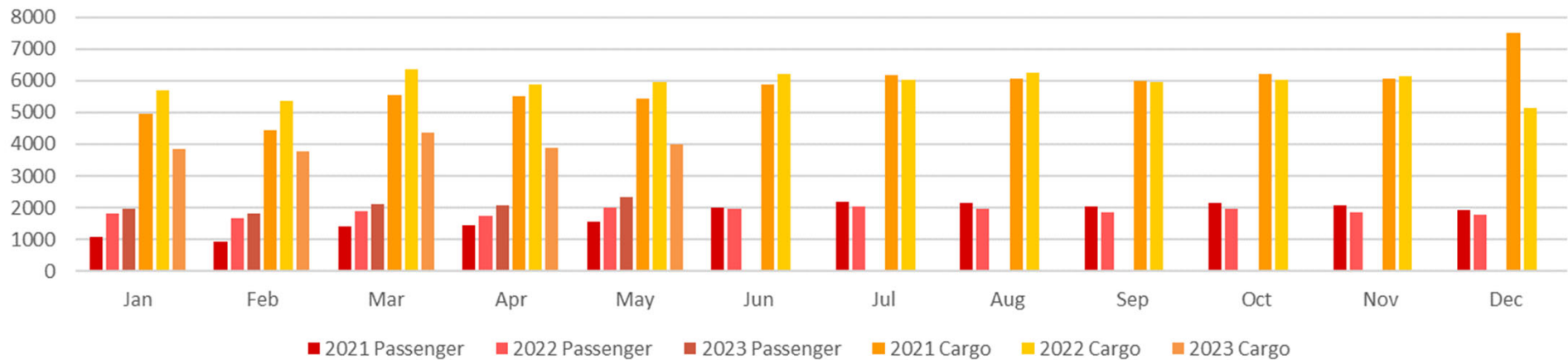
As of May 2023

Average Day Operations by Category

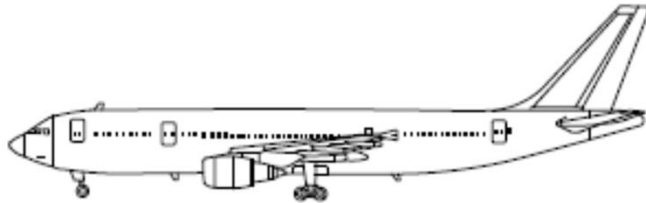


- **Air Carrier.** (AC) Aircraft with seating capacity of more than 60 seats or a maximum payload capacity of more than 18,000 pounds, carrying passengers or cargo for hire or compensation. This includes US and foreign-flagged carriers.
- **Air Taxi.** (AT) Aircraft designed to have a maximum seating capacity of 60 seats or less or a maximum payload capacity of 18,000 pounds or less, carrying passengers or cargo for hire or compensation.
- **General Aviation.** (GA) Takeoffs and landings of all civil aircraft, except for air carriers or air taxis.
- **Military.** (MIL) Operations by all classes of military takeoffs and landings at FAA and FTC facilities.

MONTHLY LANDINGS



# Sample Aircraft Types (SDF)



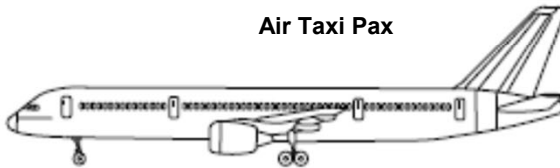
**A300**  
Air Carrier Cargo



**B767**  
Air Carrier Cargo



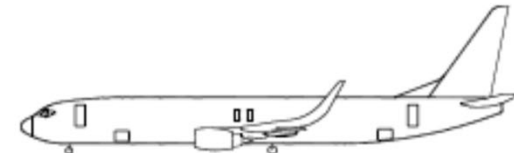
**E135/45**  
Air Taxi Pax



**B757**  
Air Carrier Cargo



**MD11**  
Air Carrier Cargo



**B737**  
Air Carrier Pax



**CRJ2**  
Air Taxi Pax



**E170**  
Air Carrier Pax



**MD80**  
Air Carrier Pax



**CRJ9**  
Air Carrier Pax