

Community Noise Forum
Monday, February 9, 2026
Agenda

- I. Call to Order: 6:00 PM
- II. Approval of October 27, 2025 Meeting Notes
- III. LRAA Board Member Report
- IV. Active Noise Cancellation Update
- V. Noise Exposure Map (NEM) Update
- VI. Noise Compatibility Program (NCP) Update and Consultant Presentation
- VII. Part 150 NCP
 - a. Noise Insulation Program
 - b. Contraflow Exceptions
- VIII. Current Noise Concerns
 - a. Noise Concerns/Complaints
 - b. Runway Utilization
 - c. Construction and Maintenance Activity
- IX. Guest Comments
- X. Announcements
- XI. Next Meeting: April 27, 2026
- XII. Adjournment

COMMUNITY NOISE FORUM (CNF)
Monday, October 27, 2025

Members

Mary Rose Evans, ANA
John Sistarenik, LRAA Board
Trey Hettinger, Airline Affairs
Jeff Kozak, UPS

Bob Slattery, LRAA
Darrell Watson, LRAA
Kristofer Violette, FAA
Kyle Hartlage, LRAA

Guests

Wendy Harrower, QHP
Emma Mason, LRAA

Bob Frankenberger, Schnitzelburg
Dorn Crawford, Audubon Park

- I. Call to Order: 6:00 PM:** The meeting was called to order at 6:00 p.m.
- II. Approval of July 28, 2025 Meeting Notes:** The meeting notes for July were approved with no changes.
- III. LRAA Board Member Report:** John Sistarenik had no report from the LRAA board.
- IV. Active Noise Cancellation Update:** Bob Slattery explained the issues that occurred during the on-site testing. The primary issue was related to the use of artificial noise sources instead of live aircraft. The testing team feels comfortable that they can work these issues out to create a good system. The LRAA needs to go to the FAA to inquire about additional funding for more testing, as the original scope of work only included one test. Solar power may also be a feasible option for this project, which could be included in the funding request to the FAA.
- V. Noise Exposure Map (NEM) Update:** The FAA reviewed the NEM's and determined that the scale of the maps was incorrect. The maps have been corrected and sent back to the FAA. The LRAA is waiting to hear back from the FAA regarding the corrections. If the FAA accepts the corrections, a notice will be published in the Federal Register for a 30-day comment period.

VI. Noise Compatibility Program (NCP) Update: The LRAA has a request for qualifications out to select a consultant to do the noise compatibility program update. The plan is to award the project at the November board meeting. Mary Rose suggested that the CNF discuss reverse flow. A summary of the SDF reverse flow, written by Dorn Crawford, was provided to meeting participants to provide context and perspective. Kristofer Violette explained runway flows from the tower's perspective. Kristofer explained that the current LOA includes a switch to north flow operation at 9 a.m. and switches back to south flow at 2 p.m. However, UPS has evolved over the years, with aircraft arriving earlier and still arriving later in the day. It can be difficult to change runways based on a clock with a lot of aircraft in the airspace. The tower supervisor will make the call to switch runways early when there is a lull in traffic. The tower does not want aircraft going in opposite directions when they make the runway changes. For safety and efficiency, the tower will determine when to change runways before the traffic increases. Kristofer explains that this used to work at 9 a.m. and 2 p.m., but it is not working anymore as UPS brings in high volume starting earlier around 8:30 a.m. The tower would like more flexibility to change runways before the heavy volume arrives and change back after the inbound is over. Tower requests an updated LOA that reflects the time that UPS is flying in order to make safe runway changes at an opportune time. A lengthy discussion followed about the advantages and possible adverse effects of the proposed changes. Mary Rose suggested that consultants could investigate these proposed changes during the NCP update. There was a consensus among the CNF to allow the tower to continue making runway change decisions at their discretion until the NCP update study.

VII. Part 150 NCP

- a. **Noise Insulation Program:** As of October 1st, 824 families have received sound insulation. Construction for 45 families will begin in November. A project for 42 additional families is scheduled to be awarded at the November board meeting.
- b. **Contraflow Exceptions:** The information for contraflow is included in the handout. Bob commented that contraflow looked good for the second quarter of 2025.

VIII. Current Noise Concerns

- a. Noise Concerns/Complaints:** The noise comments are included in the handout. Bob explained the total, new, and individual comments chart.
- b. Runway Utilization:** The daily runway charts with the tower's comments for July, August, and September are included in the handout. Mary Rose commented that the CNF appreciates the tower comments and the effort put towards explaining the runway flows.
- c. Construction and Maintenance Activity:** The recent weekend closures have been focused on the west runway. The pavement rehab project on the west side will wrap up in November. The plan is to switch to the east runway for the remaining two weekends up to Thanksgiving. There are no other runway closures scheduled through the rest of the year. The planned closures are always subject to change.

IX. Guest Comments: Bob Frankenberger from Schnitzelburg commented that he has noticed and appreciated the contraflow in the mornings.

X. Announcements: There were no announcements.

XI. Next Meeting: January 26, 2026

XII. Adjournment: A motion was made to adjourn the meeting at 7:02 p.m.



ACTIVE NOISE CONTROL



 Project Location



CONTRACTOR

HMMH, Inc and National Institute of Aerospace



SCHEDULE



90%

Start Date
8/2022

End Date
8/2026



PROJECT OVERVIEW

This project is part of an Airport Environmental Mitigation Pilot Program and involves the design, installation, optimization, and maintenance of an active noise control system. The system aims to reduce aircraft noise experienced by surrounding communities, particularly during the initial takeoff roll phase of departures at Louisville Muhammad Ali International Airport (SDF).



CURRENT STATUS

On site Testing was conducted in April with positive feedback from community members that attended. The team has determined that additional testing is required and has a high level of confidence that issues can be corrected. Currently, looking into a possible grant amendment to conduct additional on site testing



RESIDENTIAL SOUND INSULATION PROGRAM



PROJECT OVERVIEW

The QuieterHome Program began in 2008 and is part of the airport's continual efforts to insulate residential homes around the airport. Funding is 90% FAA, with the remaining 10% from the Airport Authority.



CURRENT STATUS

As of January 1, 2026, a total of 829 families have received sound insulation in all previous and current program areas. A project for an additional 42 families was awarded in December.



PHASE 2.0 - 45 FAMILIES

Status: On-Going
Contractor: Miranda Construction
Start Date: April 2025
Completion Date: April 2026 (est)

PHASE 2.1 - 42 FAMILIES

Status: Awarded
Contractor: Miranda Construction
Start Date: February 2026
Completion Date: October 2026

PHASE 1.9 - 31 FAMILIES

Status: Completed
Contractor: S&L Specialty Contracting
Start Date: September 2024
Completion Date: May 2025

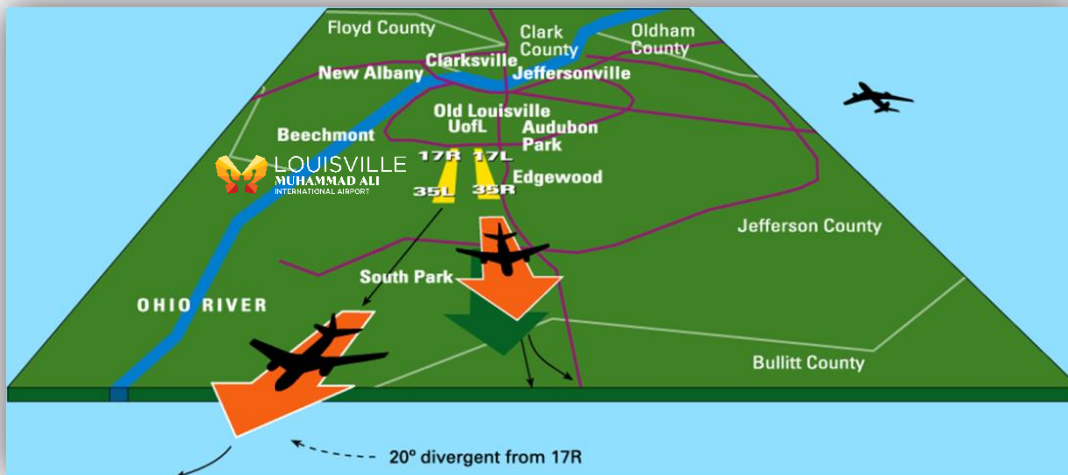
PHASE 1.8 - 29 FAMILIES

Status: Completed
Contractor: Strong Tower
Start Date: March 2024
Completion Date: January 2025

CONTRAFLOW

Between the hours of 10:00 p.m. and 7:00 a.m., the Airport operates from the south and to the south (contraflow) whenever wind, weather, and demand allow. Contraflow procedures require aircraft to arrive on Runways 35R and 35L and depart on Runways 17R and 17L in order to direct aircraft operations south of the Airport over areas which are less densely populated than areas north of the Airport.

Inbound

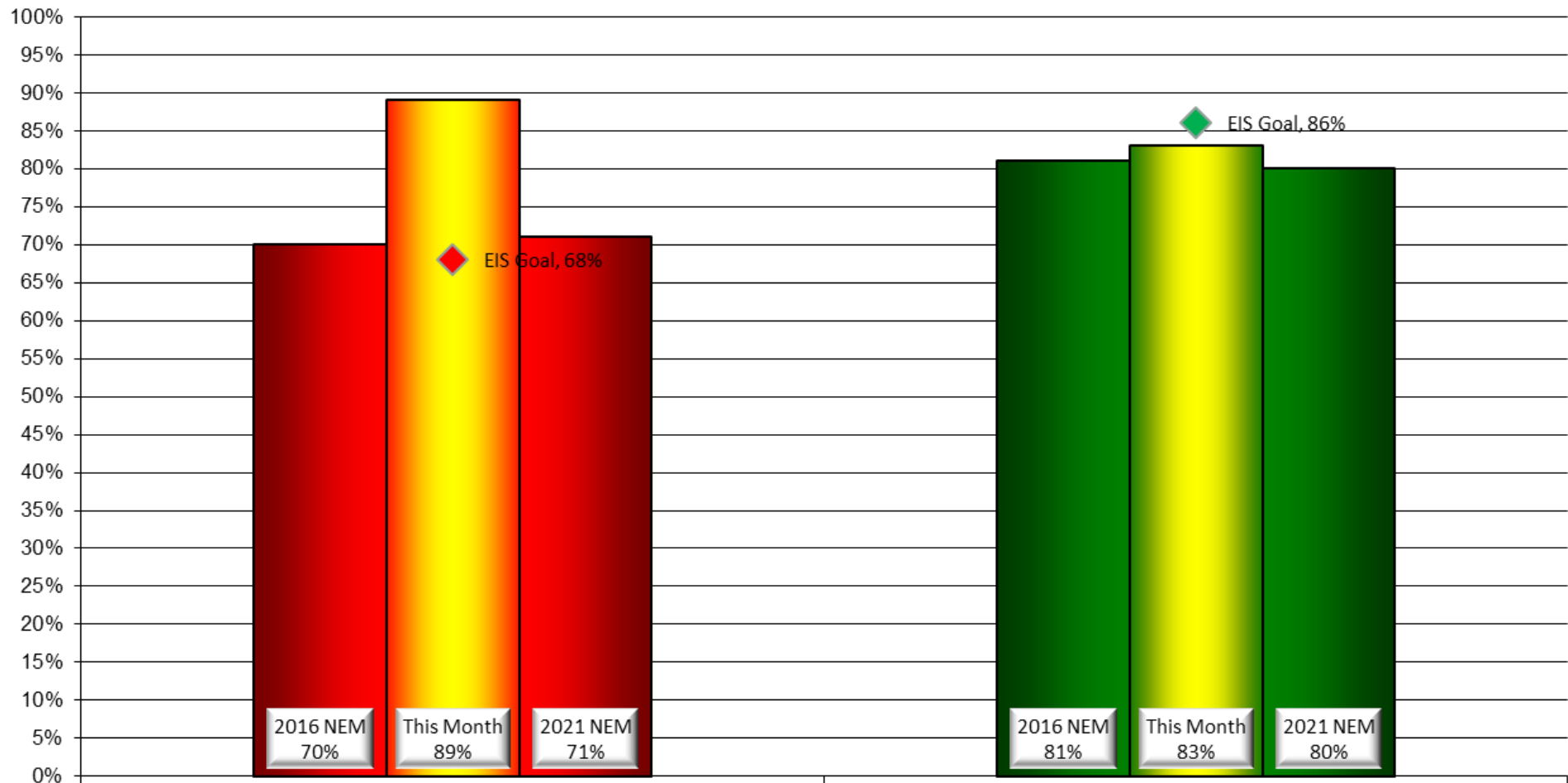


Outbound

Monthly Contraflow October 1-31, 2025

Arrivals From South

Departures to South



Nightly Runway Use Summary – October 2025

(from 10:00 PM date list in first column to 7:00 AM the following morning)

		% of all arrivals from the south									% of all departures to the south								
Date	Day	* in compliance	Runway #						Unknown Runway Use	Notes / Comments	** in compliance	Runway #						Unknown Runway Use	Notes / Comments
			11	17L	17R	29	35L	35R				11	17L	17R	29	35L	35R		
10/1/2025	Wed	98%			2		57	41	0		86%		31	55		10	4	0	
10/2/2025	Thu	98%			2		57	41	0		91%		37	54		7	2	0	
10/3/2025	Fri	96%		1	3		57	39	0		94%		39	55		2	4	0	
10/4/2025	Sat																		
10/5/2025	Sun																		
10/6/2025	Mon	0%		43	57				0	120-150 @ 0-9, g18, ra	100%		38	62				0	
10/7/2025	Tue	100%					58	42	0		0%				55	45	0	350-360 @ 8-14, g18	
10/8/2025	Wed	97%		1	2		63	34	0		88%		37	51		10	2	0	
10/9/2025	Thu	97%		1	2		57	40	0		88%		38	50		8	4	0	
10/10/2025	Fri	96%			4		58	38	0		95%		45	50		2	3	0	
10/11/2025	Sat																		
10/12/2025	Sun																		
10/13/2025	Mon	96%		2	2		57	39	0		85%		36	49		10	5	0	
10/14/2025	Tue	98%		1	1		59	39	0		87%		40	47		10	3	0	
10/15/2025	Wed	95%		2	3		55	40	0		89%		36	53		8	3	0	
10/16/2025	Thu	97%		1	2		57	40	0		87%		35	52	1	10	2	0	
10/17/2025	Fri	96%		1	3		59	37	0		96%		42	54		3	1	0	
10/18/2025	Sat																		
10/19/2025	Sun																		
10/20/2025	Mon	0%		41	59				0	140-210 @ 7-10	100%		42	58				0	
10/21/2025	Tue	98%			2		56	42	0		89%		38	51		8	3	0	
10/22/2025	Wed	98%			2		59	39	0		89%		39	50		9	2	0	
10/23/2025	Thu	98%		1	1		57	41	0		87%		38	49		9	4	0	
10/24/2025	Fri	95%		1	4		56	39	0		94%		40	54		4	2	0	
10/25/2025	Sat																		
10/26/2025	Sun																		
10/27/2025	Mon	97%			3		56	41	0		88%		38	50		9	3	0	
10/28/2025	Tue	97%		1	2		54	43	0		88%		35	53		7	5	0	
10/29/2025	Wed	100%					60	40	0		0%					60	40	0	320-350 @ 8-13, ra
10/30/2025	Thu	96%		1	3		56	40	0		87%		37	50		7	6	0	
10/31/2025	Fri	94%		2	4		61	33	0		95%		42	53		3	2	0	

Preferred Flow

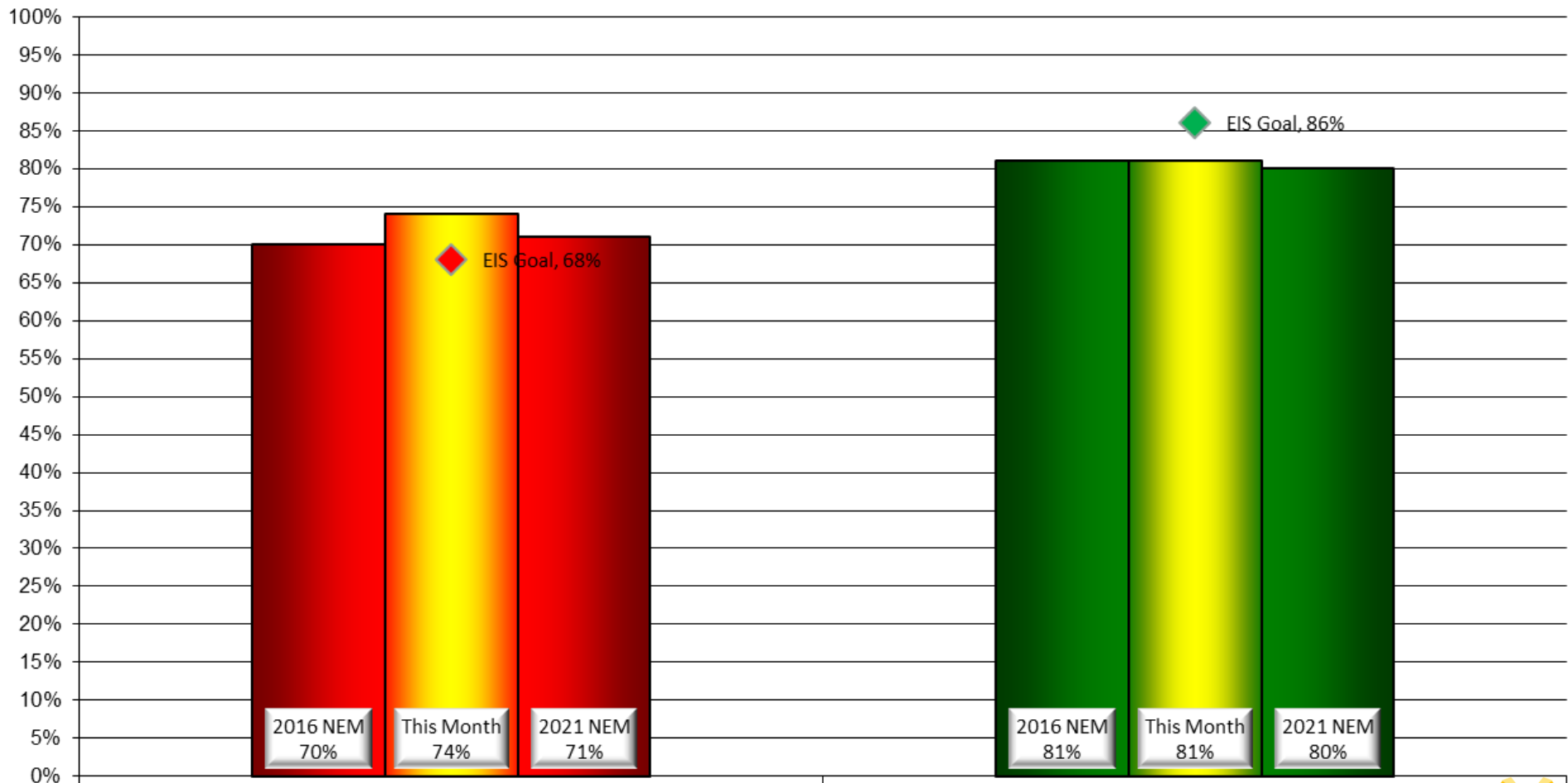
DATIS Reported Conditions Indicate Support for Non-Preferred Flow

DATIS Reported Conditions Do Not Indicate Support for Non-Preferred Flow

Monthly Contraflow November 1-30, 2025

Arrivals From South

Departures to South



Nightly Runway Use Summary – November 2025

(from 10:00 PM date list in first column to 7:00 AM the following morning)

		% of all arrivals from the south									% of all departures to the south										
Date	Day	* in	Runway #						Unknown Runway	Notes /	** in	Runway #						Unknown Runway	Notes /		
		compliance	11	17L	17R	29	35L	35R	Use	Comments	compliance	11	17L	17R	29	35L	35R	Use	Comments		
11/1/2025	Sat																				
11/2/2025	Sun																				
11/3/2025	Mon	96%		1	3			56	40	0		92%		37	55		7	1	0		
11/4/2025	Tue	100%								100	Airport clsd	99%					100		0	Parallel runways clsd	
11/5/2025	Wed	99%		1						99		0%						100	0	330-060 @ 3-5	
11/6/2025	Thu	0%		41	59					0	110-150 @ 0-6	100%		45	55				0		
11/7/2025	Fri	99%			1			59	40	0		93%		36	57		2	5	0		
11/8/2025	Sat																				
11/9/2025	Sun																				
11/10/2025	Mon	94%		1	5			56	38	0		87%		39	48		9	4	0		
11/11/2025	Tue	0%		48	52					0	210-230 @ 7-12, g23	100%		41	59				0		
11/12/2025	Wed	94%		2	4			57	37	0		89%		42	47		8	3	0		
11/13/2025	Thu	96%		1	3			58	38	0		88%		38	50		9	3	0		
11/14/2025	Fri	0%		40	60					0	180-210 @ 5-8	100%		46	54				0		
11/15/2025	Sat																				
11/16/2025	Sun																				
11/17/2025	Mon	96%		1	3			54	42	0		88%		41	47		8	4	0		
11/18/2025	Tue	82%		8	10			47	35	0		88%		42	46		9	3	0		
11/19/2025	Wed	96%		1	3			56	40	0		86%		39	47		8	6	0		
11/20/2025	Thu	93%		2	5			52	41	0		88%		41	47		8	4	0		
11/21/2025	Fri	67%		10	23			42	25	0	260-280 @ 0-7	2%			2		52	46	0	340-010 @ 7-14, ra br	
11/22/2025	Sat																				
11/23/2025	Sun																				
11/24/2025	Mon	0%		40	60					0	030-140 @ 3-4, ra	100%		39	61				0		
11/25/2025	Tue	96%		1	2		1	57	39	0		55%		25	30		3	24	18	0	270-300 @ 17-19, g28
11/26/2025	Wed	98%			2			58	40	0		65%		12	53		16	19	0	270-300 @ 7-10	
11/27/2025	Thu	87%			13			74	13	0		99%		39	60		1		0		
11/28/2025	Fri	96%			4			62	34	0		94%		41	53		3	3	0		
11/29/2025	Sat																				
11/30/2025	Sun																				

Preferred Flow

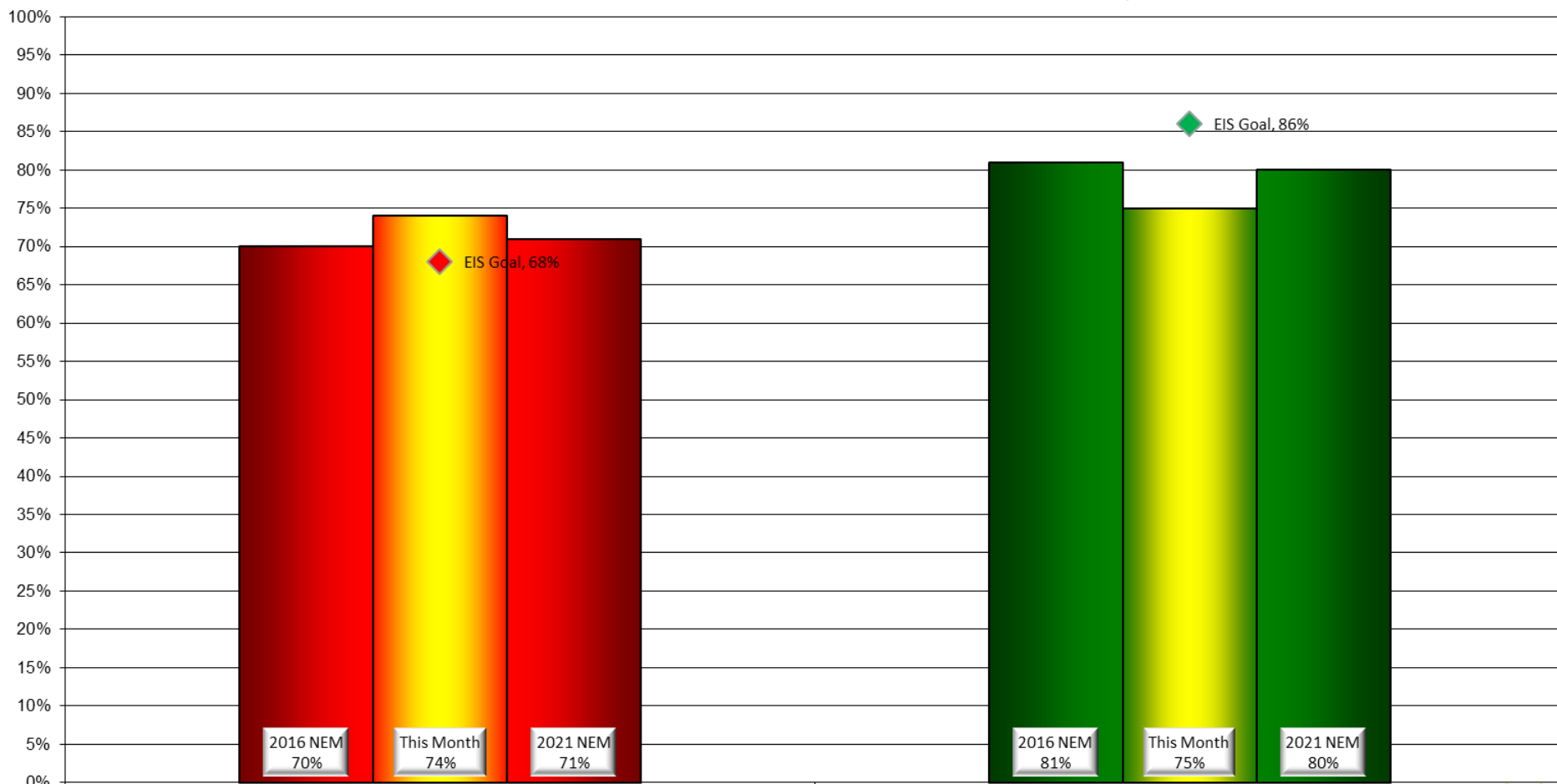
DATIS Reported Conditions Indicate Support for Non-Preferred Flow

DATIS Reported Conditions Do Not Indicate Support for Non-Preferred Flow

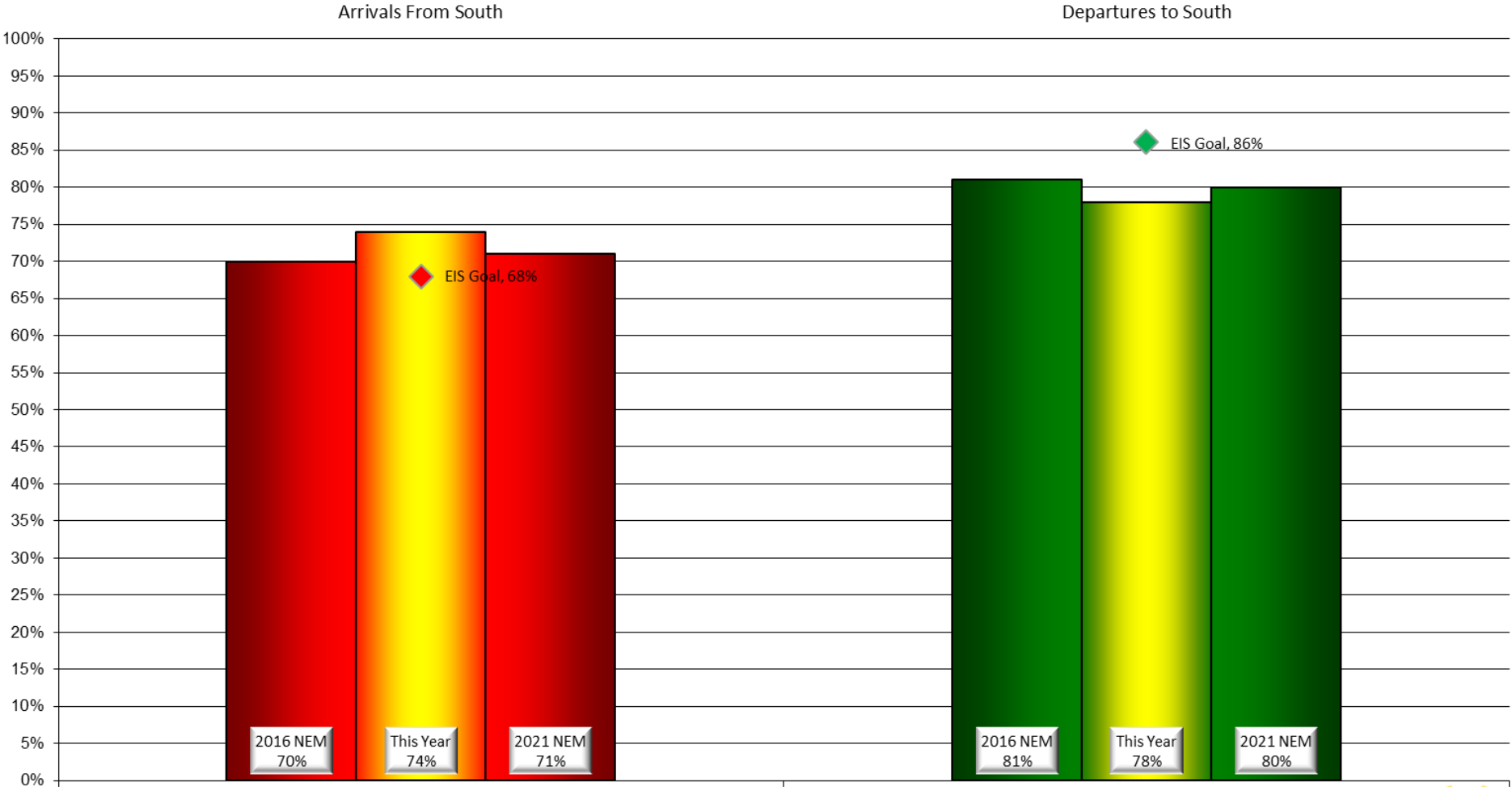
Monthly Contraflow December 1-31, 2025

Arrivals From South

Departures to South



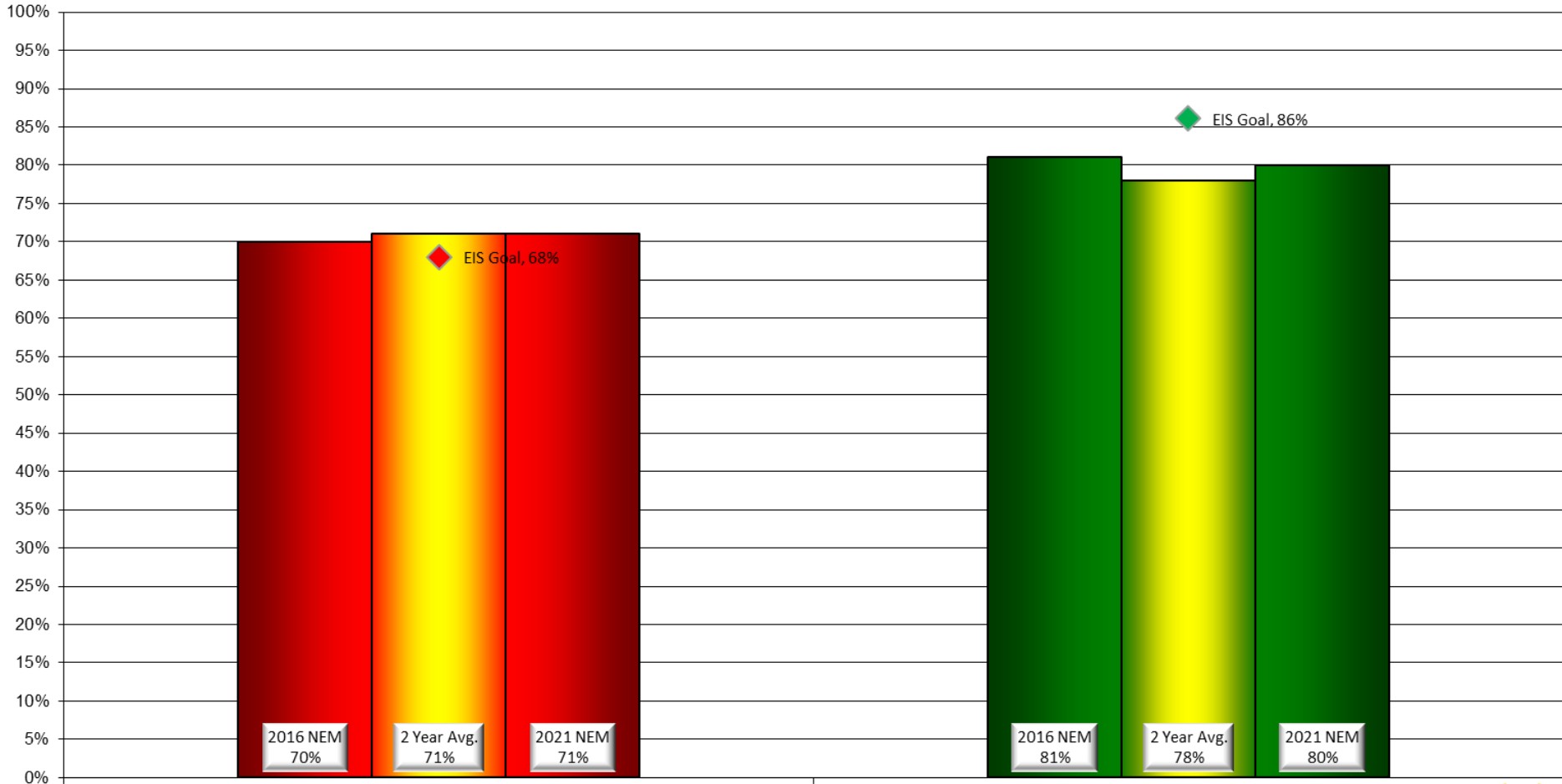
Contraflow This Year As of December 31, 2025



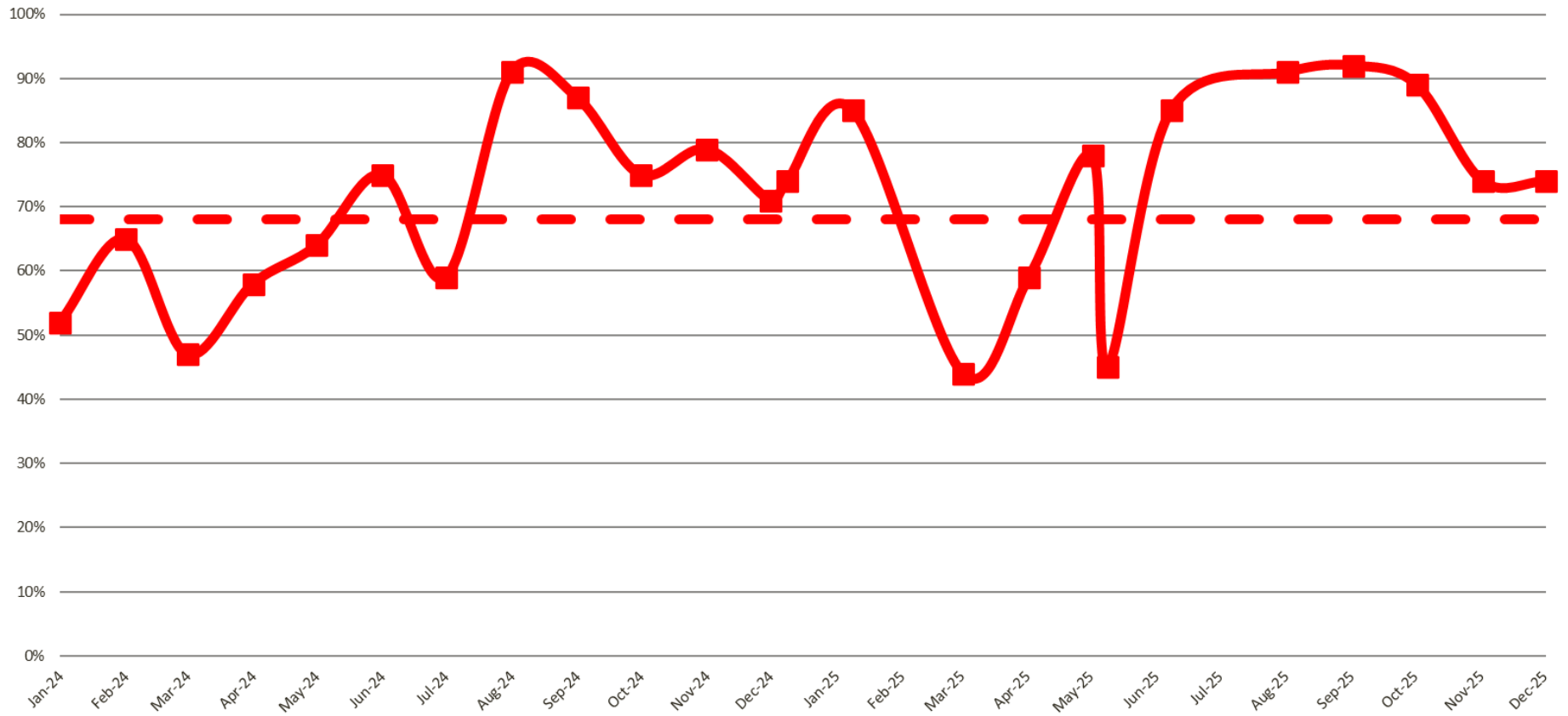
Contraflow 2 Year Average January 2024 - December 2025

Arrivals From South

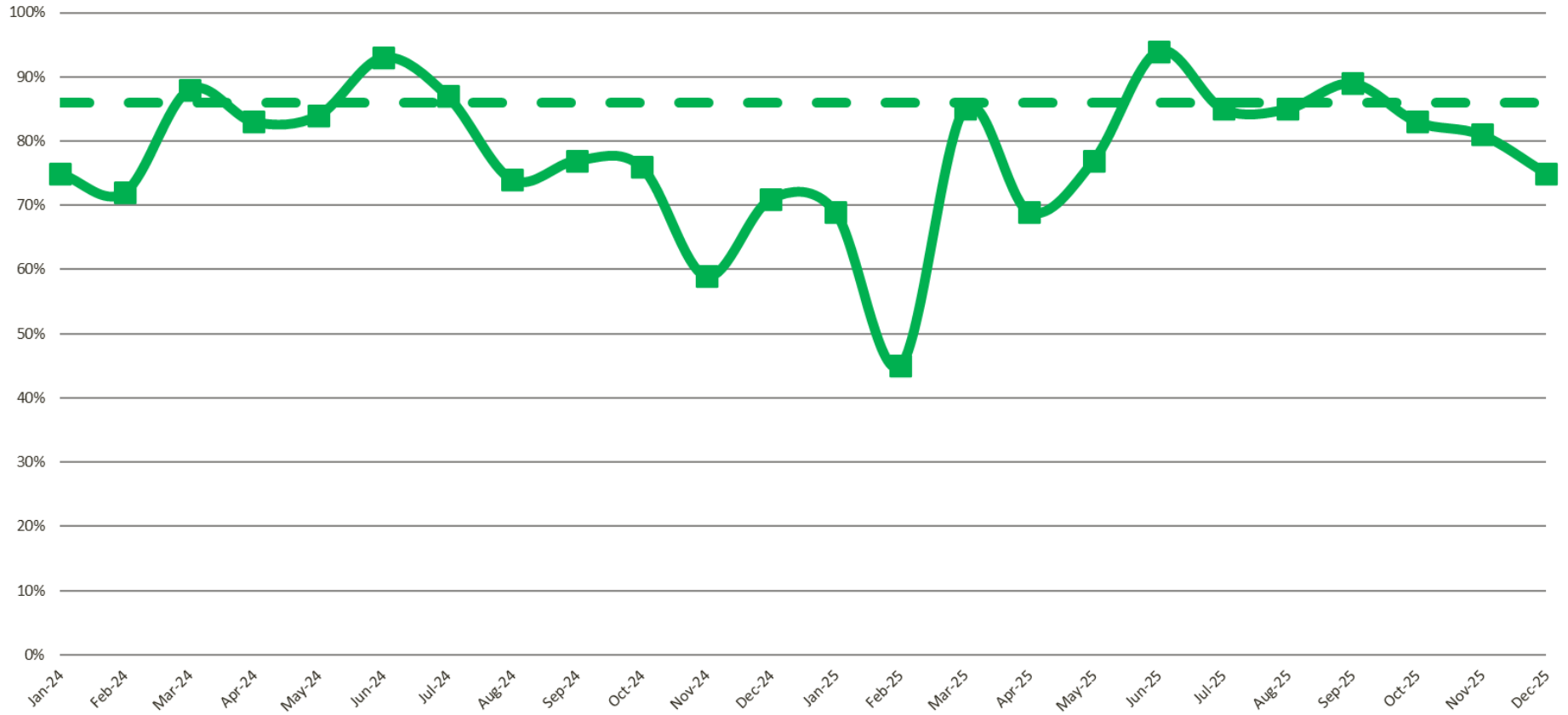
Departures to South



**Arrivals From The South
January 2024 through December 2025
(10:00 pm to 7:00 am)
(68% is Goal)**



Departures To The South
January 2024 through December 2025
(10:00 pm to 7:00 am)
(86% is Goal)



Year-to-Year by Month Percent* Contraflow

Arrivals From the South (Goal 68%)										Departures to the South (Goal 86%)									
	2018	2019	2020	2021	2022	2023	2024	2025	Avg		2018	2019	2020	2021	2022	2023	2024	2025	Avg
Jan	60%	75%	56%	71%	78%	67%	52%	74%	67%	Jan	72%	69%	82%	71%	65%	75%	79%	69%	73%
Feb	67%	78%	78%	87%	67%	62%	65%	85%	74%	Feb	70%	57%	43%	45%	56%	72%	72%	45%	58%
Mar	84%	82%	65%	51%	62%	59%	47%	44%	62%	Mar	61%	89%	64%	77%	77%	70%	88%	85%	76%
Apr	73%	65%	71%	62%	64%	76%	58%	59%	66%	Apr	72%	82%	69%	75%	82%	88%	83%	69%	78%
May	43%	65%	71%	71%	51%	84%	64%	78%	66%	May	89%	90%	90%	63%	83%	73%	84%	77%	81%
Jun	74%	50%	69%	65%	67%	85%	75%	45%	66%	Jun	91%	91%	88%	84%	70%	89%	93%	94%	88%
Jul	90%	75%	72%	70%	55%	68%	59%	85%	72%	Jul	77%	87%	91%	76%	95%	91%	87%	85%	86%
Aug	72%	88%	82%	74%	78%	91%	91%	91%	83%	Aug	88%	89%	87%	88%	89%	82%	74%	85%	86%
Sep	80%	83%	83%	63%	91%	78%	87%	92%	82%	Sep	87%	77%	85%	90%	75%	79%	77%	89%	77%
Oct	77%	79%	71%	69%	68%	58%	75%	89%	73%	Oct	76%	78%	72%	76%	78%	67%	76%	83%	76%
Nov	76%	70%	51%	61%	60%	53%	79%	74%	66%	Nov	54%	72%	78%	81%	86%	79%	59%	81%	74%
Dec	72%	76%	67%	56%	53%	62%	71%	74%	66%	Dec	61%	72%	69%	80%	88%	87%	71%	75%	75%
Avg	72%	74%	70%	67%	66%	70%	69%	74%		Avg	75%	79%	77%	76%	79%	79%	79%	78%	

Nightly Runway Use Summary – December 2025

(from 10:00 PM date list in first column to 7:00 AM the following morning)

		% of all arrivals from the south									% of all departures to the south									
Date	Day	* in compliance	Runway #						Unknown Runway Use	Notes / Comments	** in compliance	Runway #						Unknown Runway Use	Notes / Comments	
			11	17L	17R	29	35L	35R				11	17L	17R	29	35L	35R			
12/1/2025	Mon	99%			1			56	43	0							87	13	0	290-360 @ 3-7, sn
12/2/2025	Tue	93%			3	4		57	36	0				35	47		14	4	0	
12/3/2025	Wed	95%			1	4		56	39	0				28	52		11	9	0	
12/4/2025	Thu	96%			1	3		55	41	0				34	52		11	3	0	
12/5/2025	Fri	87%			3	10		47	40	0				39	57		2	2	0	
12/6/2025	Sat																			
12/7/2025	Sun																			
12/8/2025	Mon	97%			1	2		55	42	0				39	42		11	8	0	
12/9/2025	Tue	0%			43	57				0	190-220 @ 10-16, g29			40	60				0	
12/10/2025	Wed	100%						55	45	0							56	44	0	290-310 @ 5-11
12/11/2025	Thu	0%			41	59				0	070-150 @ 3-6, sn			43	57				0	
12/12/2025	Fri	96%			1	3		59	37	0				36	59		3	2	0	
12/13/2025	Sat																			
12/14/2025	Sun																			
12/15/2025	Mon	94%			1	5		56	38	0				36	47		11	6	0	
12/16/2025	Tue	0%			42	58				0	190-220 @ 8-14, g 21			39	61				0	
12/17/2025	Wed	0%			48	52				0	120-170 @ 6-12			48	52				0	
12/18/2025	Thu	98%					2	56	42	0						34	46	20	0	240-300 @ 12-22, g35, sn
12/19/2025	Fri	93%				7		54	39	0				40	53		4	3	0	
12/20/2025	Sat																			
12/21/2025	Sun																			
12/22/2025	Mon	0%			44	56				0	190-210 @ 9-14, g23			39	61				0	
12/23/2025	Tue	94%			2	4		54	40	0				33	47		12	8	0	
12/24/2025	Wed	91%			2	7		51	40	0				14	73		9	4	0	
12/25/2025	Thu	88%			4	8		65	23	0				38	56		5	1	0	
12/26/2025	Fri	95%				5		58	37	0				42	53		2	3	0	
12/27/2025	Sat																			
12/28/2025	Sun																			
12/29/2025	Mon	99%					1	60	39	0							63	37	0	290-310 @ 8-12, sn
12/30/2025	Tue	93%			3	4		56	37	0				35	49		9	7	0	
12/31/2025	Wed	96%			1	3		51	45	0				30	48		13	9	0	5 flights departed to north

Preferred Flow

DATIS Reported Conditions Indicate Support for Non-Preferred Flow

DATIS Reported Conditions Do Not Indicate Support for Non-Preferred Flow



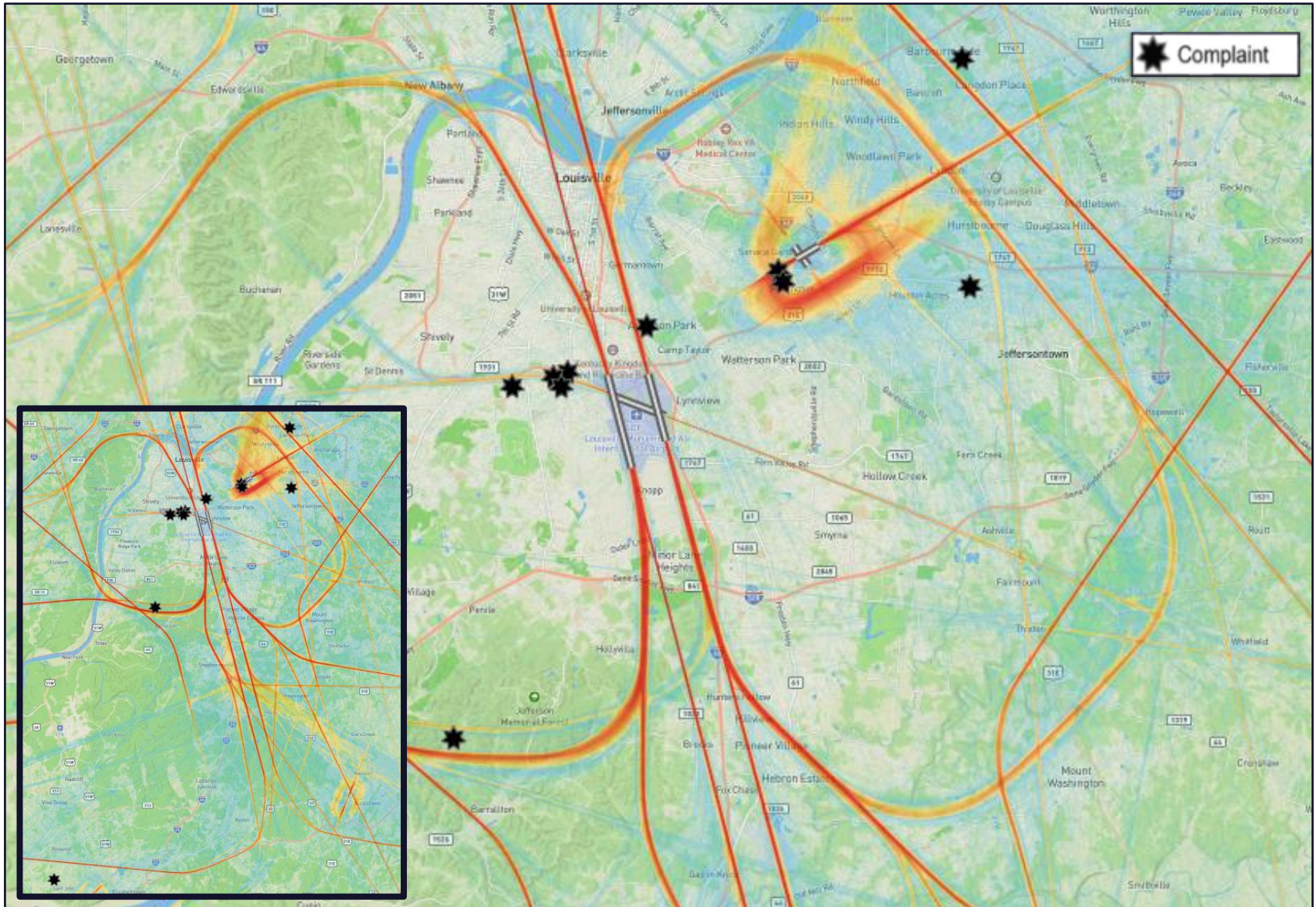
Noise Comment Report

LOUISVILLE REGIONAL AIRPORT AUTHORITY



October 2025

Flight Track Density/ Comment Location October 2025 (SDF/LOU)



Comment Summary October 2025 (SDF/LOU)

Date	Time Of Complaint	Airport	Location	Comment Type	Comment
2025-10-04	08:07	SDF	Dinah Court, KY 40242	Too Loud	<p>Evidently, the airport requires a large number of planes to either depart or arrive in a flight path that goes over our neighborhood. Our experience has been that the overhead noise persists for hours. It's not just one airplane overhead but waves of airplanes traveling the same flight path. Just when you think the noise is over, it reoccurs over and over for an extended period of time. From my conversation on this issue, some suggestions surfaced.</p> <ol style="list-style-type: none">1. Have the planes fly at higher altitudes. If they are departure planes, then faster and higher prior to entering the path that takes the plane overhead of our neighborhood. Of course, I understand there are trade-offs. One needs to be concerned about the level of noise involved in the thrust in order to fly a plane higher. Maybe there's a way to optimize higher as fast as possible that takes into account the above limitation.2. Instead of having planes fly on exactly the same path, have a flight plan to disperse them. Fan them out over a more spacious flight path. This way the departing planes or arriving planes would be able to cross over our neighborhood airspace in a shorter time. Hence, less the effect of a drip drip plane generated noise. The time overhead of a wave of airplanes that are fanned out would be considerably shorter and less deleterious to the sleep cycle of citizens in their beds at home.

Comment Summary October 2025 (SDF/LOU)

Date	Time Of Complaint	Airport	Location	Comment Type	Comment
2025-10-07	22:38	SDF	Santa Fe Trail, KY 42701	Too Loud	<p>Asleep barely 40 minutes and jolted awake by a low-flying, loud, noisy jet right over our house! Then every 2-5 min. Here comes another loud jet low over house! Some had a high piercing, loud noise like it was doing a straight nosedive into our house! It stopped for a bit, and then, when we were just getting back to sleep, started up again about 11:34 p.m.! This kept up every 2-3 min until about 1:15 a.m. the next day, 10/8! 3 hours of constant abuse from your jets, at least 31!! Barely 3 hours of sleep for us last night. You city people don't understand how quiet it is out in the country, and then your stupid jets fly low and loud over us all night! Like to see YOU try to sleep like that!!</p>
2025-10-08	22:21	LOU	Kings Hwy, KY 40205	Too Late	<p>There was an aircraft flying a training pattern departing from runway 6 and doing touchdowns on runway 24 last night, 10/8/2025. The aircraft had been flying before 10:00 p.m., but the aircraft continued flight training from 10:00 p.m. until 10:21 p.m., making flight loops over residential homes. The aircraft departed at 10:26 p.m. from runway 6 and flew north to Clark Regional Airport. This was a school night for children and senior citizens trying to sleep. This is a noise issue and safety issue for these residents. There was no possible reason for this plane to blatantly fly training loops over the most populated residential areas around Bowman Field. Please contact the FAA, tower, Bowman Field, aircraft owner, and pilot that flight training after 10:00 pm is not allowed. This is not only a noise issue for residents, but also a safety issue for all residential areas.</p>

Comment Summary October 2025 (SDF/LOU)

Date	Time Of Complaint	Airport	Location	Comment Type	Comment
2025-10-12	11:00	LOU	KY, 40205	Too Loud	We loved the air show however planes taking off and flying overhead non-stop is not standard for Bowman or any other small airport. It appeared that an effort had been made to either limit the circling and touch and go traffic however that seems to have stalled. I patiently await your response. In the interim I am accumulating names on a neighborhood petition to limit the incessant traffic noise.
2025-10-17	04:00	SDF	Santa Fe Trail, KY 42701	Too Loud	We were asleep and jolted awake by an extremely loud, noisy jet flying right over us! It started at 4 a.m. and we can still hear it at 4:04 a.m.! It rumbled and shook our house!!! Not only was this too loud, but it is too late at night! People sleep at night, in case you didn't know! Plus, we live in the country and it is extremely quiet out here! You city people don't understand that!!! Now we got to try to get back asleep before we have to go to work!!!!
2025-10-19	11:35	SDF	Santa Fe Trail, KY 42701	Too Loud	Extremely loud jet! Loud noise lasted almost 2 minutes hearing it!
2025-10-19	14:00	SDF	Southern Pkwy, KY 40214	Too Loud	I'm just trying to find out why all these planes have been going over the house since early this morning, every five minutes. Driving me crazy.
2025-10-19	14:00	SDF	Southern Pkwy, KY 40214	Too Loud	Please document continuous flyover noise all Sunday afternoon.

Comment Summary October 2025 (SDF/LOU)

Date	Time Of Complaint	Airport	Location	Comment Type	Comment
2025-10-20	13:15	SDF	Bearcamp Rd, KY 40272	Too Loud	I live in the Jefferson Memorial Forrest and when the planes come over at about 4:00 a.m., it is really disturbing. They really seem to be bad on Thursday afternoon at around 3:30 p.m.
2025-10-21	13:40	SDF	Craig Ave, KY 40215	Too Loud	I was checking to see if anything has changed at the airport. It seems like there is more fly over noise than there was in the past.
2025-10-21	17:00	SDF	Southcrest Dr, KY 40215	Too Loud	The noise has gotten worse since they built the new UPS hanger. It has really been bad the past few months.
2025-10-21	23:10	SDF	Santa Fe Trail, KY 42701	Too Late	Too loud, too low, too late, too many!!! Of course, we were asleep barely an hour and here come these d*** noisy jets flying low over our house late at night-one right after another! It has barely been 50 minutes, and there's already been at least 10 planes every 2-5 minutes keeping us awake! We don't even live anywhere near your stupid airport! We live in the country! Some of these planes are so piercing, whining loud. And there goes another one too noisy and too loud and too late! We have to get some sleep because we have to go to work tomorrow! I bet you get your sleep!!!

Comment Summary October 2025 (SDF/LOU)

Date	Time Of Complaint	Airport	Location	Comment Type	Comment
2025-10-22	00:13	SDF	Santa Fe Trail, KY 42701	Too Loud	Just when we are almost asleep again, here comes another loud, noisy jet flying over us!!! We have to get sleep! Do you all even realize that, that human people need to sleep at night or they can't function!?!?! I wish these jets were flying over your house all night long, keeping you awake! I bet you'd stop it then!!! Again, trying to go to sleep!!! We have had 1 hour of sleep tonight! We have to get sleep so we can function tomorrow! And here another one! 2 in 2 min!! Noisy jets!
2025-10-22	01:27	SDF	Santa Fe Trail, KY 42701	Too Loud	Too loud, too late! Make it stop!!!!!!!!!! Now you all are just doing psychological warfare on us! Waking us up, keeping us up, letting us think we can almost go back to sleep, only to hear more loud, noisy jets flying low over us all night long! We just want to go to sleep!!!! Where is our right to life, liberty, and the pursuit of happiness! Because we sure as s*** don't have it! It has been taken. Away from us by you people!! You stop for a few minutes, and we think we are safe to go sleep and then wake us up again!

Comment Summary October 2025 (SDF/LOU)

Date	Time Of Complaint	Airport	Location	Comment Type	Comment
2025-10-25	12:13	LOU	KY, 40205	Too Loud	<p>Thank you for your recent response to my noise complaints. I live in the Bowman neighborhood near Hawthorne Elementary. It is currently 12:13 on Saturday 10/25/25. The fly overs began at 8:00 a.m. and have continued every few minutes since. Yesterday it began at 7ish and was non-stop all day. While it appeared to me that the glut of droning overhead noise had diminished of late, due possibly to distributing the fly-overs to a broader spectrum...yesterday was LOUD. As I stated previously, we have lived in the area for 40 years, I grew up on the other side of Bowman, so I have experienced the effects of airport traffic most of my life. This is not normal traffic. While once again we are glad to see entrepreneurship prosper in any sector, the noise level created by the constant fly-overs borders on abusive. As I stated earlier, there appears to be an effort to vary flight patterns. Please continue if that is the case. Thank you for the opportunity to voice our concerns.</p>
2025-10-28	03:58	SDF	Santa Fe Trail, KY 42701	Too Loud	<p>Jolted awake by loud, noisy jet sounds like a rocket taking off outside our house! Loud rumbling heard for long time! Another loud rocket taking off right outside house! Early in the morning waking is up! This happened every so often last night too!</p>

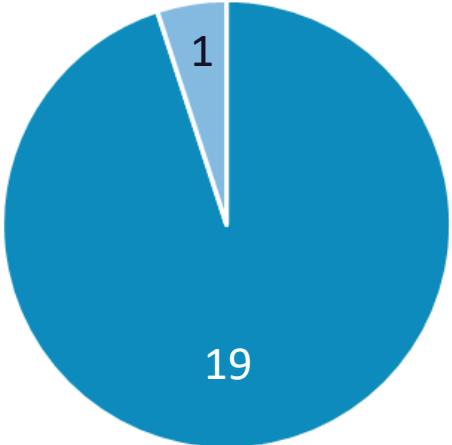
Comment Summary October 2025 (SDF/LOU)

Date	Time Of Complaint	Airport	Location	Comment Type	Comment
2025-10-29	22:39	SDF	Santa Fe Trail, KY 42701	Too Loud	Well just barely asleep and jolted awake by a horribly loud, noisy screeching sound like a jet? What the h***!?!?
2025-10-30	22:00	LOU	Hurstbourne , KY 40220	Too Loud	Last night at approximately 10:00 p.m., something flew over that was really too loud, and it was very scary.
2025-10-30	22:21	SDF	Santa Fe Trail, KY 42701	Too Loud	Too loud, too late! Who is flying this time of night!!!??'!
2025-10-31	17:30	SDF	Audubon Pkwy, KY 40213	Too Loud	Treat-or-treat time - great occasion for minimizing background noise. Yet reverse (north) flow continues, three hours after scheduled end (1730). Wind 275 at 5 knots, gusting to 12, yielding near-zero tailwind component. Happy Halloween.

Comment Cause & Location

October 2025 (SDF/LOU)

COMPLAINTS PER TYPE

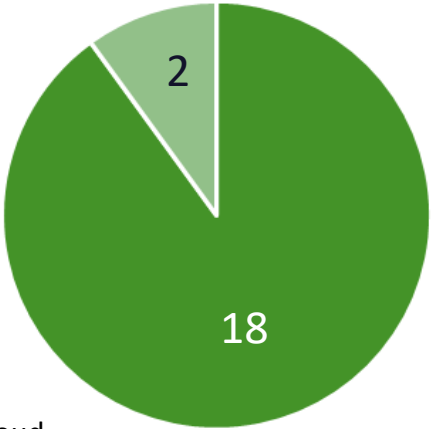


Generic Complaint



Specific Complaint

COMPLAINTS PER CAUSE



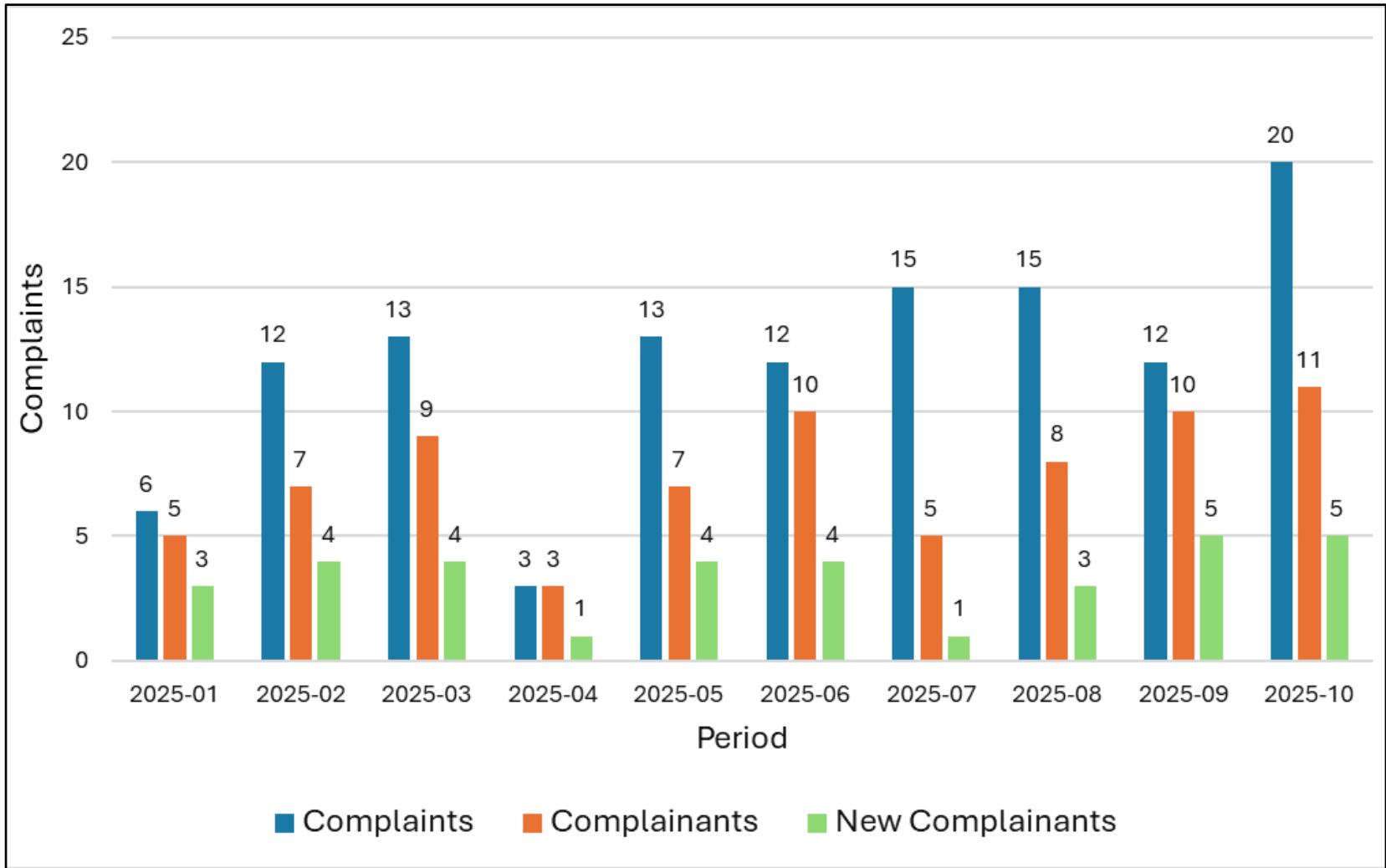
Too Loud



Too Late

Total, New, and Individual Comments

January 1 – October 31, 2025
(SDF/LOU)



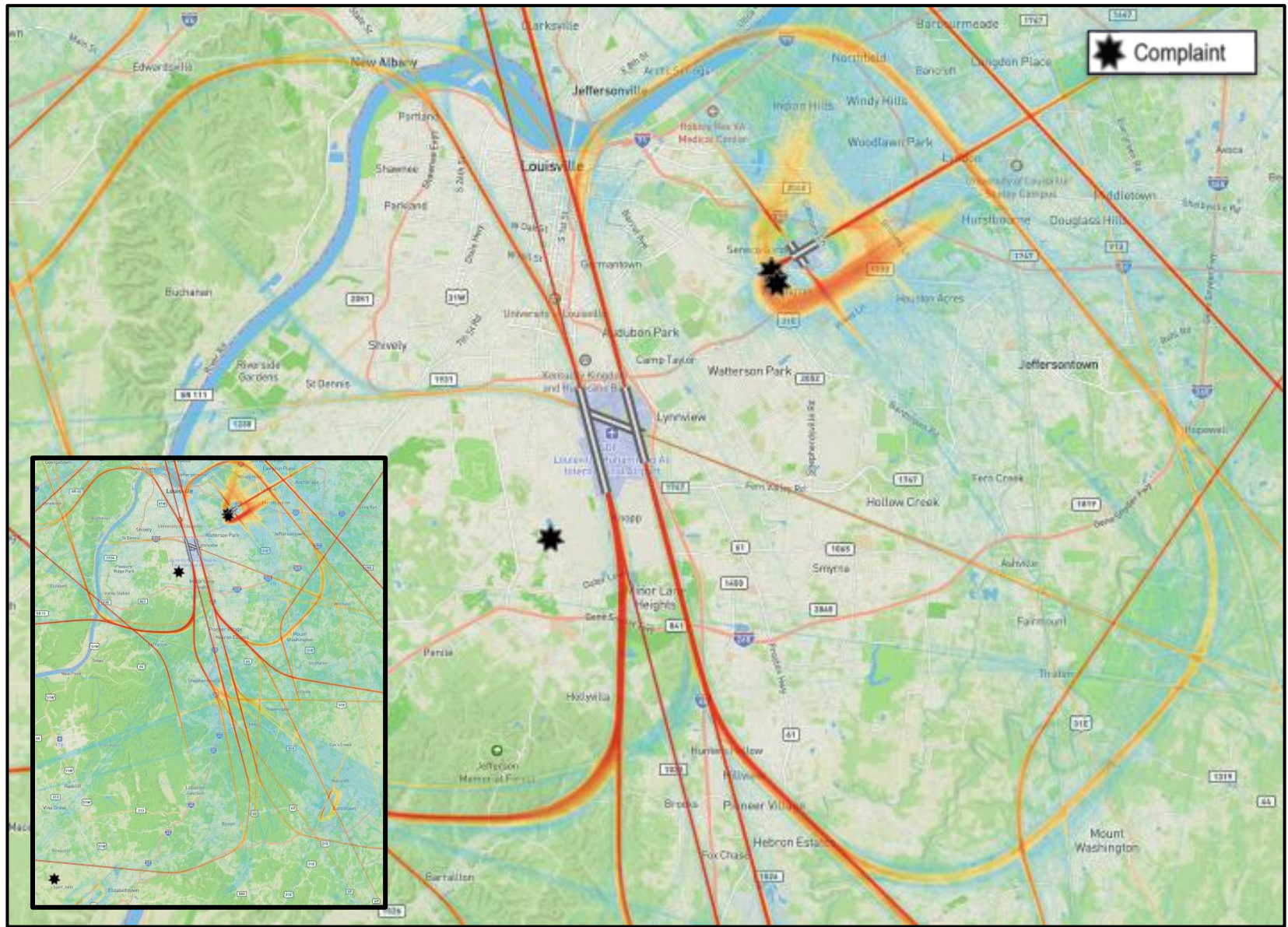
Noise Comment Report

LOUISVILLE REGIONAL AIRPORT AUTHORITY



November 2025

Flight Track Density/ Comment Location November 2025 (SDF/LOU)



Comment Summary November 2025 (SDF/LOU)

Date	Time Of Complaint	Airport	Location	Comment Type	Comment
2025-11-05	22:48	SDF	Santa Fe Trail, KY 42701	Too Loud	Too loud and too late! Noisy jet plane flying low over our house sounding like whining, a loud sound woke us up from sleep!
2025-11-07	05:09	SDF	Santa Fe Trail, KY 42701	Too Loud	Loud noisy jet flew low over house! Waking us up! Way too early!
2025-11-11	00:34	SDF	Santa Fe Trail, KY 42701	Too Late	Too loud, once again too loud and too late woke us up from sleep earlier tonight and they just keep coming!
2025-11-12	23:01	SDF	Santa Fe Trail, KY 42701	Too Late	Too loud, too late, too many! Too low! Well, here we go again! Trying to sleep and already jolted awake earlier by loud, noisy jets! Come on! You all turned Louisville into a s***hole, and now you are turning Hardin County into a s***hole too! Congrats, you did it! This is h*** on earth, too! Thanks for the dose of domestic terrorism!
2025-11-17	19:42	LOU	Kings Hwy, KY 40205	Too Low	Sending information regarding old man aviation. Date 11/17/25. Leaving Bowman to St. Louis. Absolutely too low over residential area. Time 7:42 pm. Should be investigated and reported immediately. Especially considering the recent catastrophe at Muhammad Ali airport and UPS. This is unacceptable and dangerous.

Comment Summary November 2025 (SDF/LOU)

Date	Time Of Complaint	Airport	Location	Comment Type	Comment
2025-11-18	18:51	SDF	York River Rd, KY 40214	Other	<p>UPS planes are still banking and turning over our neighborhood, Yorktown North, yesterday, look it up, UPS 5542. Banked and turned, it's the only one taken off. Wasn't the weather. Wasn't Fort Knox. Cutting the corner to go out west. Gotta stop. I'm taking this one all the way up to the top. It's ridiculous with what happened with the UPS plane crashing over here by us. Every morning now we live in trauma every time we hear these d*** planes. Better start working on that too. That's going to be coming out next. And fudging those numbers on the takeoffs when you tell me they're half throttle. Maybe that had something to do with the crash. Ever thought about that? So, I'm going to try to get everyone involved, looking at the numbers on the noise because from brake stop to two miles out, they are at half throttle, like the guy says at that meeting, or his words were they never are at full throttle. If they aren't, why not?</p>
2025-11-20	22:58	SDF	Santa Fe Trail, KY 42701	Too Loud	<p>Too late, too many, and too loud! Low flying noisy jets! This last one sounded like it was crashing! You might want to check and see if it is still in the air!!! Do you all realize it is night time! You know, normal time to sleep!!!! It should be illegal to fly jets over houses in the country at night!!!</p>

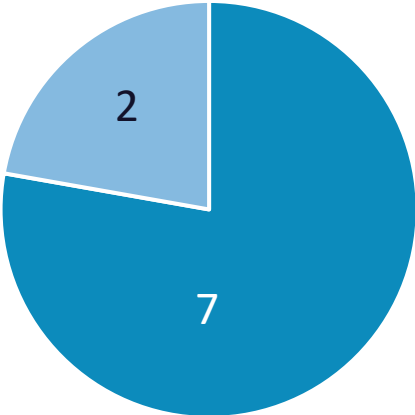
**Comment Summary
November 2025 (SDF/LOU)**

Date	Time Of Complaint	Airport	Location	Comment Type	Comment
2025-11-26	17:12	SDF	Santa Fe Trail, KY 42701	Too Low	Huge UPS jet just flew right over our house! It was so low I could almost see in the windows! And it was noisy loud!
2025-11-28	11:49	LOU	KY, 40205	Too Many	It is beginning to feel personal. 40 flyovers in 3 hours is beyond the pale. GIVE IT A BREAK!

Comment Cause & Location

November 2025 (SDF/LOU)

COMPLAINTS PER TYPE



● Generic Complaint ● Specific Complaint

COMPLAINTS PER CAUSE

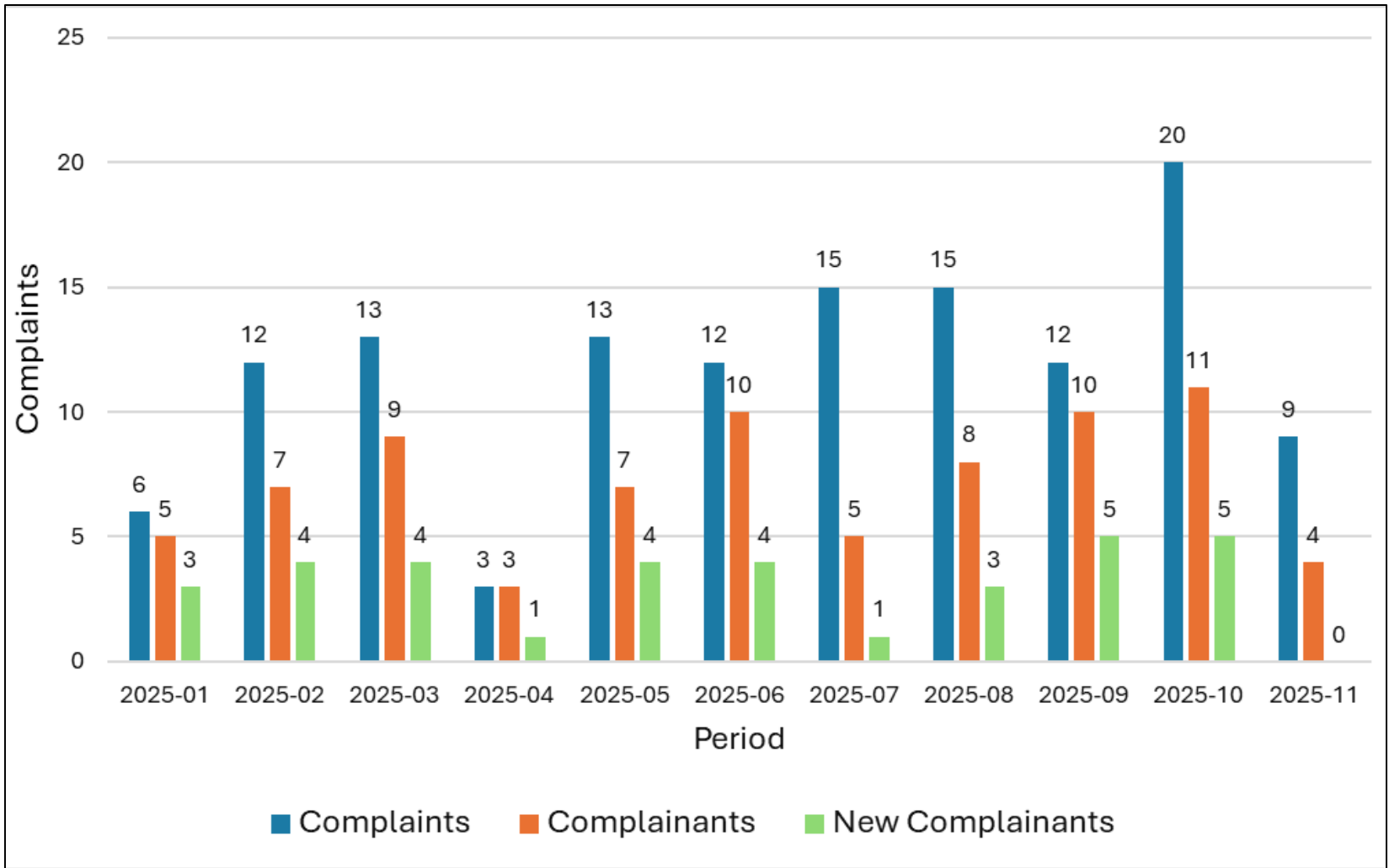


● Too Loud ● Too Low ● Too Late ● Too Many ● Other

Total, New, and Individual Comments

January 1 – November 30, 2025

(SDF/LOU)



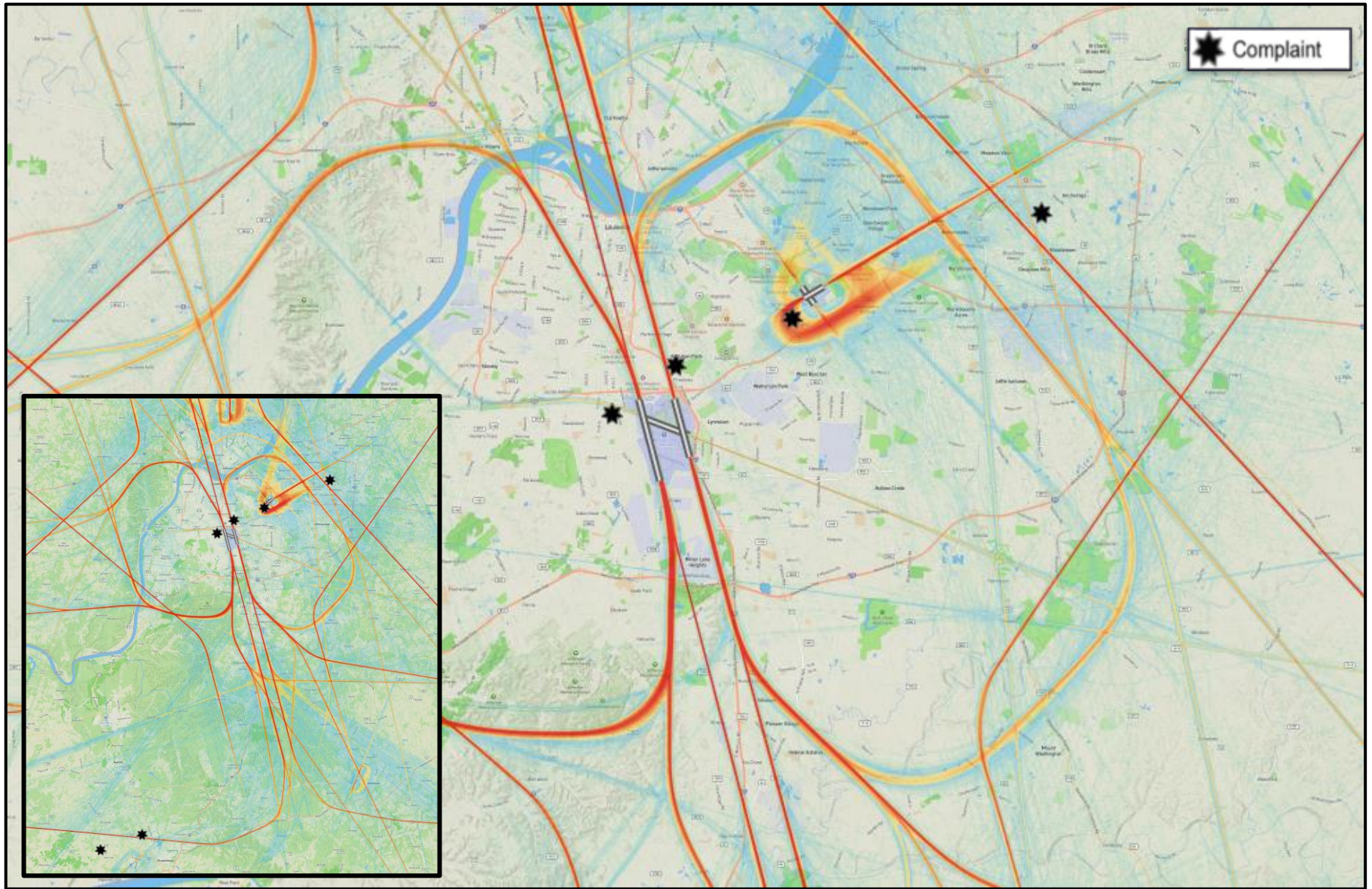
Noise Comment Report

LOUISVILLE REGIONAL AIRPORT AUTHORITY



December 2025

Flight Track Density/ Comment Location December 2025 (SDF/LOU)



Comment Summary December 2025 (SDF/LOU)

Date	Time Of Complaint	Airport	Location	Comment Type	Comment
2025-12-08	14:00	SDF	Robin Rd, KY 40213	Other	Any idea why SDF was north flow yesterday? Looks like we should have been south flow after 2.
2025-12-17	23:50	SDF	Old Harrods Creek Rd, KY 40223	Too Loud	I've been disturbed by planes flying loudly over my home last night and this morning. They kept me awake. This is not typical.
2025-12-18	10:28	SDF	Old Harrods Creek Rd, KY 40223	Too Loud	I've been disturbed by planes flying loudly over my home last night and this morning. This is not typical.
2025-12-18	23:07	SDF	Santa Fe Trail, KY 42701	Too Loud	Were you trying to land in my backyard?! We were sound asleep and jolted awake by a loud, noisy jet plane flying low right over us! It was loud!!! Sounded like it was crashing and whining, screeching! And now here is another loud one that is rumbling our house! Too late, too low, too loud!!!!!! Trying to get back to sleep, and you all are just being a*****! You all are doing this on purpose! Who flies 20 planes at night in a row over out here in the country?? Low a** planes! I forgot us country people aren't allowed to pursue happiness or life or freedom!!
2025-12-19	00:01	SDF	Santa Fe Trail, KY 42701	Too Late	Well, now it's the next day, and I've gotten 1 hour of sleep because of you a*****! Low flying, loud, noisy jets flying late at night! I hope you all go bankrupt! Too late, too loud! It's been an hour and just one after the other every few minutes, probably been 10-15 planes! STOP! We have to go to work tomorrow! AND WE HAVE TO BE ABLE TO FUNCTION!!!!!!!!!!!!!!

Comment Summary December 2025 (SDF/LOU)

Date	Time Of Complaint	Airport	Location	Comment Type	Comment
2025-12-19	05:00	SDF	E Woodlawn Ave, KY 40214	Too Loud	I have lived here for 40 years. The airplane noise has been getting worse. This morning was really bad. I have been up since 5:00 a.m. It also seems like Sundays are bad.
2025-12-21	13:35	LOU	KY, 40205	Too Many	It's Sunday, 4 hours of flyovers is more than enough. Tell them to go home to their families.
2025-12-27	15:31	LOU	KY, 40205	Too Many	Saturday, 12/27/25, 3:31 in the afternoon. 75, a conservative guess, flyovers in a single day is 70 too many and BEYOND THE PALE. I guess a petition to stop the noise pollution is back on the table. The Bowman, Kingsley, and Strathmore neighborhoods.
2025-12-29	23:43	SDF	Santa Fe Trail, KY 42701	Too Loud	Of course, already had a bunch of loud, low-flying, noisy jets go right over our house and wake us up!!!! Then almost asleep when minutes later woken by another one! Then almost asleep, and another one comes by! This last one at 11:55 p.m. jolted us awake again, loud and noisy, sounding like it was crashing! And here's another one as I write at f***** midnight!!! Next day!! Maybe we will get lucky, and one of your stupid jets will actually crash into our house and end our h***** torture and miserable lives!

Comment Summary December 2025 (SDF/LOU)

Date	Time Of Complaint	Airport	Location	Comment Type	Comment
2025-12-30	07:58	LOU	KY, 40205	Too Loud	Tuesday 12/30. The 1st fly over was at 7:58, a lull of ten minutes was followed by 24 flyovers until 9:10. That's roughly a flyover every 2.5 minutes. The sustained droning lasts another 30 seconds average that leaves a droning free time span of approximately 2 minutes in between flyovers. That has not slowed and continues as I write this note. Please inform me as to what the airport authority considers nuisance levels of noise and flyover numbers. Certainly, there are regulations airports must adhere to if in a heavily residential area such as Bowman. Please advise.
2025-12-30	10:47	SDF	Santa Fe Trail, KY 42701	Vibration	I guess it's not enough for you to keep us awake all night with your low-flying, loud screeching jets, but you have to do it during the day too! My house shook while one of your planes was flying so low and so noisily over it! They do this all the time, shaking our house! Out here in the country! Miles from your airport, and it wasn't even going in the direction of your airport; it was flying east!!
2025-12-30	16:35	LOU	KY, 40205	Too Many	4:35 on the same day. The pace seems to have quickened. Are you there? Does this matter?
2025-12-30	23:00	SDF	Dorothy Dr, KY 42701	Too Late	I usually go to sleep at 10-10:15 p.m. Aircraft can be heard flying over the area around then and later loud enough to wake me. I'm sure I'm not the only person who experiences this.

Comment Summary December 2025 (SDF/LOU)

Date	Time Of Complaint	Airport	Location	Comment Type	Comment
2025-12-30	23:04	SDF	Santa Fe Trail, KY 42701	Too Late	<p>What the h***! You a***** couldn't finish the job last night, so you are back at it tonight! Same thing! Just barely asleep, and we are awakened by a low-flying, noisy jet flying over us! You might as well kill us now instead of dragging it out! Quit flying over our house so we can go to SLEEP!!!! I hope you all go out of business! Just when we think maybe. Just maybe we can fall back asleep, here comes another d*** jet! <i>(Representative of multiple comments within the hour).</i></p>
2025-12-31	00:04	SDF	Santa Fe Trail, KY 42701	Too Many	<p>Congratulations, you made it to the next day of terrorizing us with no sleep! I guess this is going to go on the rest of the night! My husband has to get some sleep because he drives a truck! I would love to find out where you live and put loud jet noises outside your place every few minutes all night long, see how you feel! How many jets do you all have!!!!!! Just when we think we can get some sleep, here you come again with your loud jets! For f**** sake, I'm exhausted and need to go to sleep! You all are doing this on purpose/torturing us! That was an extremely loud, screeching, noisy jet like it was crashing in my backyard! Just f***** kill me now!!!! I got 30 min sleep tonight before you woke us up! <i>(Representative of multiple comments within the hour).</i></p>

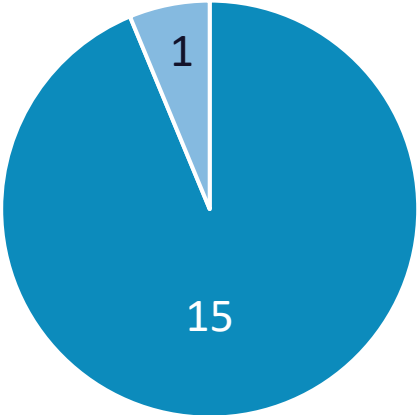
Comment Summary December 2025 (SDF/LOU)

Date	Time Of Complaint	Airport	Location	Comment Type	Comment
2025-12-31	14:00	SDF	Robin Rd, KY 40213	Other	Sorry to sound like a broken record, but I continue to notice apparent irregular flows at SDF. 12/19 – North flow after 4 pm. ATIS and TAF appeared conducive for south flow operations. 12/25 – North flow after 2 pm. Winds light and variable and out of the south 12/30 – North flow after 2 pm. Wind out of the west. No tailwind component greater than 4. ATIS & TAF appeared to show the same. 12/31 – Still north flow as of this email, even though winds have been out of the WSW all day and are forecasted to continue. Thanks as always for looking into this.

Comment Cause & Location

December 2025 (SDF/LOU)

COMPLAINTS PER TYPE



- Generic Complaint
- Generic Question

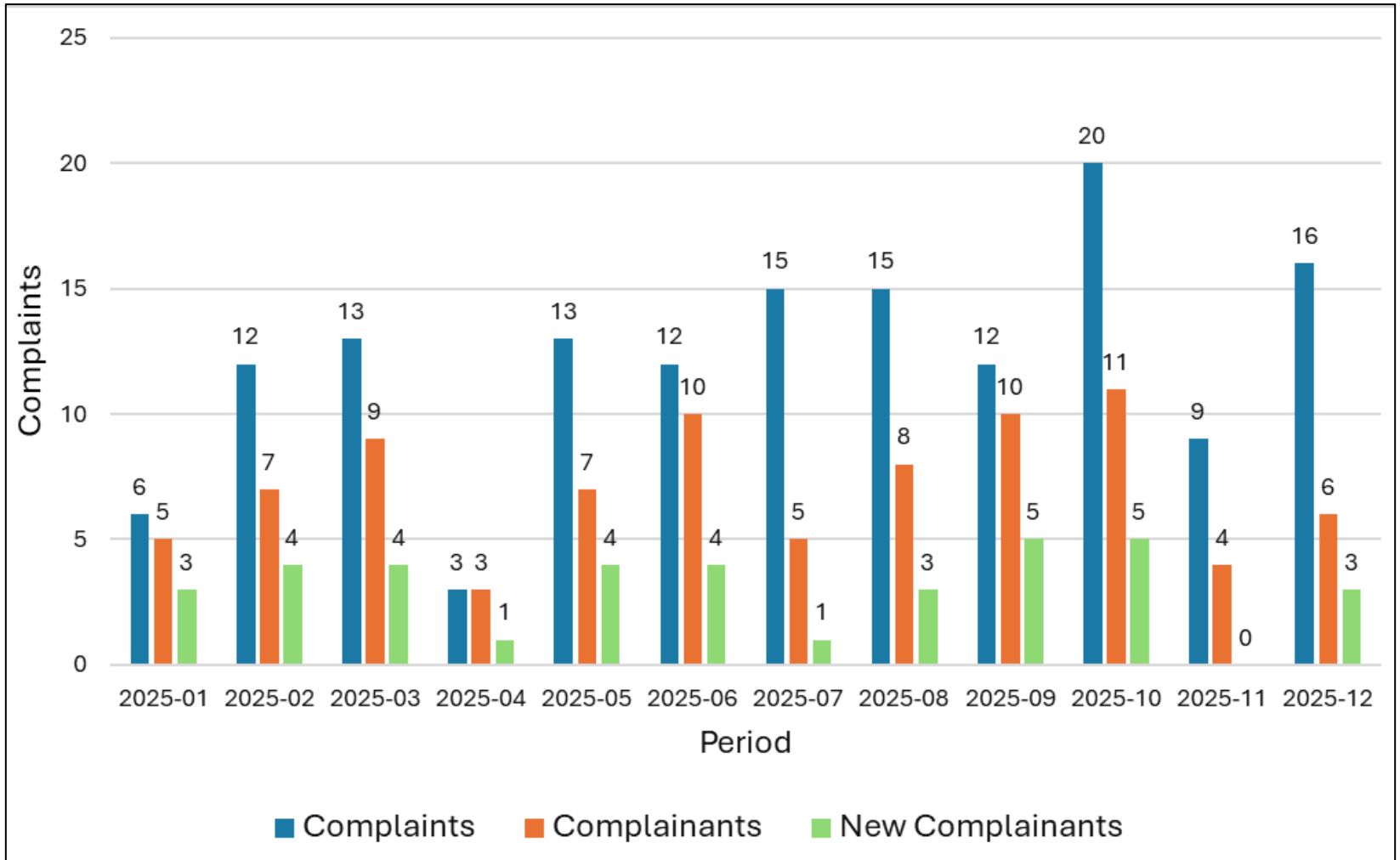
COMPLAINTS PER CAUSE



- Too Loud
- Too Many
- Too Late
- Other
- Vibration

Total, New, and Individual Comments

January 1 – December 31, 2025
(SDF/LOU)



Runway Use and Aircraft Types

LOUISVILLE

REGIONAL AIRPORT AUTHORITY



LOUISVILLE
MUHAMMAD ALI
INTERNATIONAL AIRPORT

Fourth Quarter CY-2025
October – December 2025

Daily Runway October 2025 (SDF)

Flow	Time UTC	Time Local	Wed 10/1	Thu 10/2	Fri 10/3	Sat 10/4	Sun 10/5	Mon 10/6	Tue 10/7	Wed 10/8	Thu 10/9	Fri 10/10	Sat 10/11	Sun 10/12	Mon 10/13	Tue 10/14	Wed 10/15	Thu 10/16	Fri 10/17	Sat 10/18	Sun 10/19	Mon 10/20	Tue 10/21	Wed 10/22	Thu 10/23	Fri 10/24	Sat 10/25	Sun 10/26	Mon 10/27	Tue 10/28	Wed 10/29	Thu 10/30	Fri 10/31	Time Local		
North Flow	0400	0:00																																0:00		
	0430	0:30																																	0:30	
	0500	1:00																																	1:00	
	0530	1:30																																	1:30	
	0600	2:00																																	2:00	
	0630	2:30																																	2:30	
South Flow	0700	3:00																																3:00		
	0730	3:30																																	3:30	
	0800	4:00																																	4:00	
	0830	4:30																																	4:30	
	0900	5:00																																	5:00	
	0930	5:30																																	5:30	
	1000	6:00																																	6:00	
	1030	6:30																																	6:30	
	1100	7:00																																		7:00
	1130	7:30																																		7:30
	1200	8:00																																		8:00
1230	8:30																																		8:30	
North Flow	1300	9:00																																	9:00	
	1330	9:30																																	9:30	
	1400	10:00																																	10:00	
	1430	10:30																																	10:30	
	1500	11:00																																	11:00	
	1530	11:30																																	11:30	
	1600	12:00																																	12:00	
	1630	12:30																																		12:30
	1700	13:00																																		13:00
	1730	13:30																																		13:30
South Flow	1800	14:00																																	14:00	
	1830	14:30																																	14:30	
	1900	15:00																																	15:00	
	1930	15:30																																	15:30	
	2000	16:00																																	16:00	
	2030	16:30																																	16:30	
	2100	17:00																																	17:00	
	2130	17:30																																	17:30	
	2200	18:00																																		18:00
	2230	18:30																																		18:30
	2300	19:00																																		19:00
	2330	19:30																																		19:30
	2400	20:00																																		20:00
	0030	20:30																																		20:30
0100	21:00																																		21:00	
0130	21:30																																		21:30	
North Flow	0200	22:00																																	22:00	
	0230	22:30																																	22:30	
	0300	23:00																																	23:00	
	0330	23:30																																		23:30
Flow	Time		Wed 10/1	Thu 10/2	Fri 10/3	Sat 10/4	Sun 10/5	Mon 10/6	Tue 10/7	Wed 10/8	Thu 10/9	Fri 10/10	Sat 10/11	Sun 10/12	Mon 10/13	Tue 10/14	Wed 10/15	Thu 10/16	Fri 10/17	Sat 10/18	Sun 10/19	Mon 10/20	Tue 10/21	Wed 10/22	Thu 10/23	Fri 10/24	Sat 10/25	Sun 10/26	Mon 10/27	Tue 10/28	Wed 10/29	Thu 10/30	Fri 10/31	Time		

Daily Runway October 2025 (SDF)

Date	Day	Time	UTC	Comment
1-Oct-25	Wed	1900-2200	2300-0200	Strong winds out of the north close to the tailwind component max
2-Oct-25	Thu	2030-2200	0030-0200	No reason documented
3-Oct-25	Fri	1030-1400	1430-1800	Early change to south due to winds occasionally at the tailwind component max
4-Oct-25	Sat			
5-Oct-25	Sun			
6-Oct-25	Mon			
7-Oct-25	Tue	1630-2200	2030-0200	Strong winds out of the north/northwest and forecasted to remain that way
8-Oct-25	Wed	1900-2200	2300-0200	No reason documented
9-Oct-25	Thu	1800-2200	2200-0200	Strong winds out of the northeast surface and aloft
10-Oct-25	Fri			
11-Oct-25	Sat			
12-Oct-25	Sun			
13-Oct-25	Mon	0900-1400	1300-1800	No reason documented
13-Oct-25	Mon	1500-2200	1900-0200	Strong winds out of the north close to the tailwind component max
14-Oct-25	Tue	1900-2200	2300-0200	No reason documented
15-Oct-25	Wed	1800-2200	2200-0200	Strong winds out of the north close to the tailwind component max
16-Oct-25	Thu			
17-Oct-25	Fri	1100-1400	1500-1800	Strong winds out of the south close to the tailwind component max
18-Oct-25	Sat			
19-Oct-25	Sun			
20-Oct-25	Mon	0900-1300	1300-1700	Forecasted strong winds out of the south
21-Oct-25	Tue			
22-Oct-25	Wed	1800-2200	2200-0200	Strong winds out of the west/northwest
23-Oct-25	Thu	1800-2200	2200-0200	Strong winds out of the northwest
24-Oct-25	Fri			
25-Oct-25	Sat			
26-Oct-25	Sun			
27-Oct-25	Mon	0900-1200	1300-1600	Late switch, no reason documented
28-Oct-25	Tue	0900-1400	1300-1800	No reason documented
29-Oct-25	Wed	1000-1400	1400-1800	Winds out of the east/southeast with wet runways
29-Oct-25	Wed	1800-2200	2200-0200	Wet Runways
30-Oct-25	Thu	1900-2200	2300-0200	Strong winds out of the northwest close to the tailwind component max
31-Oct-25	Fri	1400-2200	1800-0200	Gusty winds out of the west/northwest

Daily Runway November 2025 (SDF)

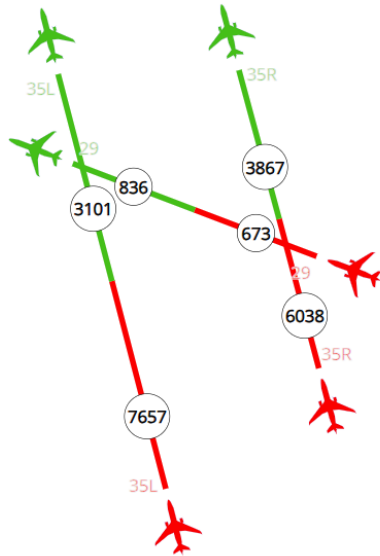
Date	Day	Time	UTC	Comment
1-Nov-25	Sat			
2-Nov-25	Sun	1200-1930	1600-2330	Wet Runways and north winds, remained north for outbound and couldn't change flows until it was over
3-Nov-25	Mon			
4-Nov-25	Tue			
5-Nov-25	Wed	1900-2200	0000-0300	No reason documented
6-Nov-25	Thu	0300-0900	0800-1400	No reason documented
6-Nov-25	Thu	2200-0000	0300-0500	Strong winds out of the southeast surface and aloft, forecasted strong winds out of the south
7-Nov-25	Fri	0000-0300	0500-0800	Same as above, remained south flow for inbound (operational advantage to ensure we wouldn't have to change flows during inbound)
8-Nov-25	Sat			
9-Nov-25	Sun			
10-Nov-25	Mon			
11-Nov-25	Tue			
12-Nov-25	Wed	1100-1400	1600-1900	Gusty winds out of the WSW, switched to northflow once the crosswind was WNW
12-Nov-25	Wed	1600-2200	2100-0300	Winds gusting out of the WNW
13-Nov-25	Thu			
14-Nov-25	Fri	0900-1200	1400-1700	Remained south due to strong winds current and forecasted
15-Nov-25	Sat	0000-0300	0500-0800	Strong southerly winds at surface and altitude, south flow for inbound
16-Nov-25	Sun	1900-0000	0000-0500	Strong winds out of the northwest occasionally exceeding tailwind component
17-Nov-25	Mon	0000-0900	0500-1400	No reason documented
18-Nov-25	Tue			
19-Nov-25	Wed			
20-Nov-25	Thu			
21-Nov-25	Fri			
22-Nov-25	Sat	0100-0300	0600-0800	Switched to south flow due to heavy/extreme precipitation covering the north finals
22-Nov-25	Sat	1300-1500	1800-2000	Started the day with strong winds out of the north and were late switching to south flow at 1949Z
23-Nov-25	Sun			
24-Nov-25	Mon	1100-1400	1600-1900	Strong winds aloft out of the south
24-Nov-25	Mon	2200-0000	0300-0500	Remained south flow overnight due to strong winds aloft with south surface wind and forecasted wet runways
25-Nov-25	Tue	0000-0200	0500-0700	See above
26-Nov-25	Wed	1930-2200	0030-0300	RWY 29 originally then swapped early to north flow to setup for UPS inbound
27-Nov-25	Thu	1400-2200	1900-0300	Strong winds out of the WNW
28-Nov-25	Fri	0130-0300	0630-0800	Early change to south flow due to lack of traffic (Thanksgiving)
28-Nov-25	Fri	1400-1530	1900-2030	Late change waiting for wind to calm down a little more than we were seeing at 1900Z
29-Nov-25	Sat			
30-Nov-25	Sun			

Daily Runway December 2025 (SDF)

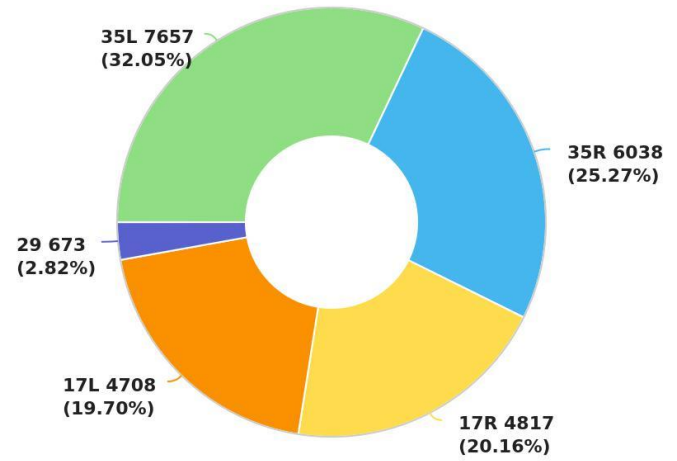
Date	Day	Time	UTC	Comment
1-Dec-25	Mon	0000-0130	0500-0630	Remained north flow due to forecasted winds and previous hours winds of 34009
1-Dec-25	Mon	1400-1530	1900-2030	Late change due to volume
2-Dec-25	Tue	1400-2200	1900-0300	Remained north flow due to wind and snow (wet runways)
3-Dec-25	Wed			
4-Dec-25	Thu			
5-Dec-25	Fri			
6-Dec-25	Sat			
7-Dec-25	Sun			
8-Dec-25	Mon	1400-2200	1900-0300	Remained north flow due to winds of 36009 and forecasted winds of 35007
9-Dec-25	Tue			
10-Dec-25	Wed	1200-1400	1700-1900	Gusting winds out of the southwest 24016G24
11-Dec-25	Thu	0400-0900	0900-1400	Remained north overnight for strong winds out of the northwest
12-Dec-25	Fri	1500-2200	2000-0300	Remained north flow due to winds and wet runways
13-Dec-25	Sat	1500-2000	2000-0100	Swapped to north flow for outbound due to current winds forecasted winds of 31009, didn't want to make change in middle of outbound
14-Dec-25	Sun	1400-0000	1900-0500	North flow all night due to winds and runway contamination (SN)
15-Dec-25	Mon	0000-0130	0500-0630	North flow all night due to winds and runway contamination (SN)
15-Dec-25	Mon	0900-1400	1400-1900	Remaining south flow due to wind 18008
16-Dec-25	Tue	0900-1100	1400-1600	Remained south due to current and strong forecasted winds out of the south
17-Dec-25	Wed	1200-1400	1700-1900	Strong winds out of the southwest, peak traffic and didn't want to risk runway change
18-Dec-25	Thu			
19-Dec-25	Fri	1600-2200	2100-0300	Strong winds out of the northwest, couldn't change runways in middle of outbound
20-Dec-25	Sat	2300-0000	0400-0500	Super weekend, UPS inbound, utilized north flow for inbound
21-Dec-25	Sun	0000-0200	0500-0700	Super weekend, UPS inbound, utilized north flow for inbound
21-Dec-25	Sun	2000-0000	0100-0500	Super weekend, UPS inbound, utilized north flow for inbound
22-Dec-25	Mon	0000-0230	0500-0730	Super weekend, UPS inbound, utilized north flow for inbound
22-Dec-25	Mon	0900-1400	1400-1900	No reason documented
23-Dec-25	Tue			
24-Dec-25	Wed			
25-Dec-25	Thu	1500-2200	2000-0300	Remained north flow for wind and wet runways
26-Dec-25	Fri			
27-Dec-25	Sat			
28-Dec-25	Sun			
29-Dec-25	Mon			
30-Dec-25	Tue	1400-2200	1900-0300	Remained north flow due to wind and forecasted winds of 31010
31-Dec-25	Wed	1400-1500	1900-2000	Late change due to volume, swapped at 1950Z
31-Dec-25	Wed	1830-2200	2330-0300	Strong winds out of the northwest

Arrivals/ Departures October 1 - December 31, 2025 (SDF)

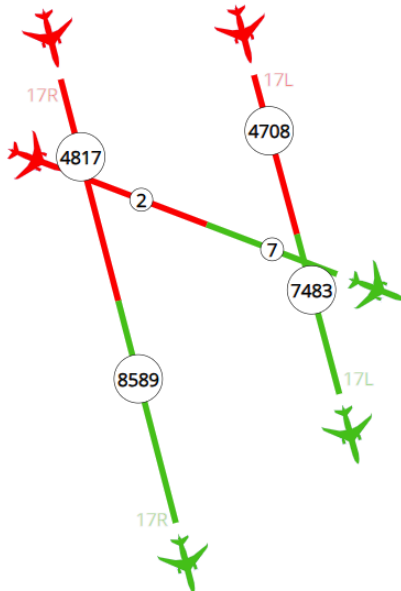
NORTH FLOW RUNWAY UTILIZATION



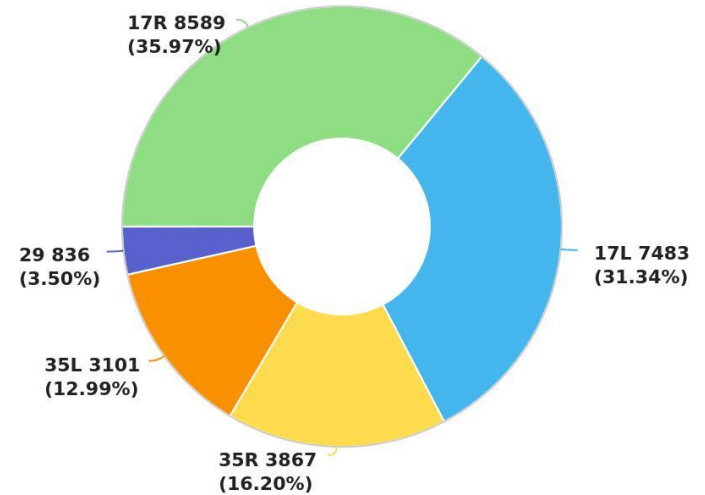
ARRIVALS PER RUNWAY



SOUTH FLOW RUNWAY UTILIZATION

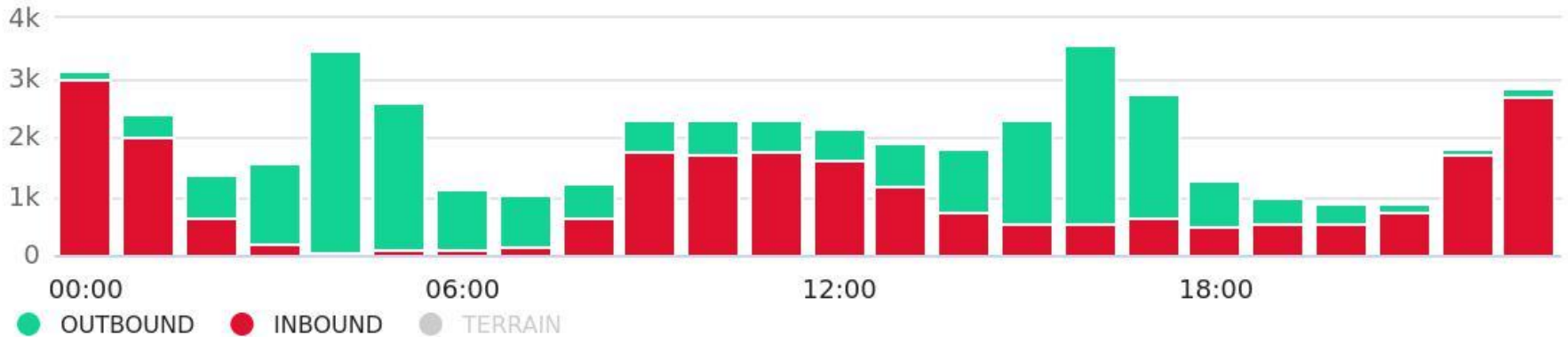


DEPARTURES PER RUNWAY

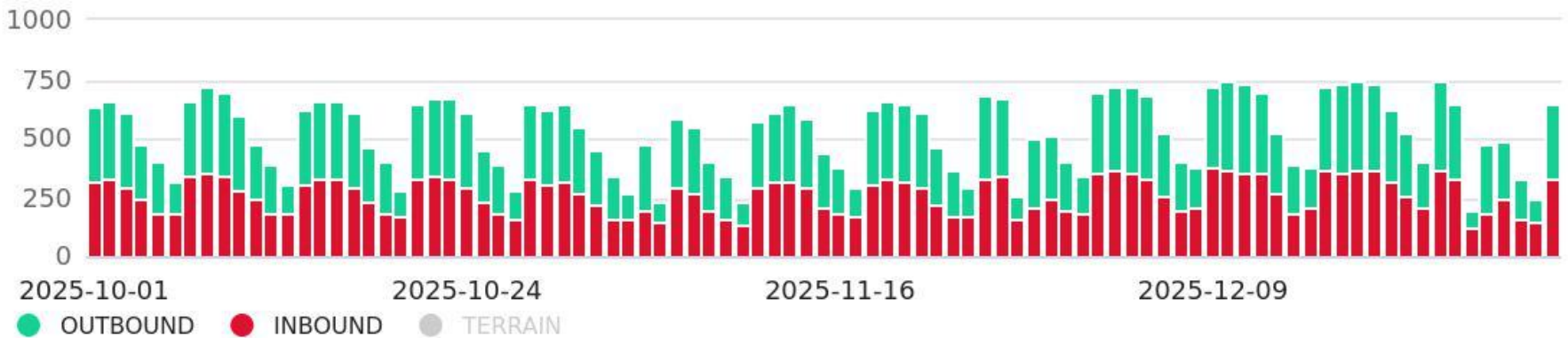


Arrivals/ Departures October 1 - December 31, 2025 (SDF)

FLIGHTS PER HOUR



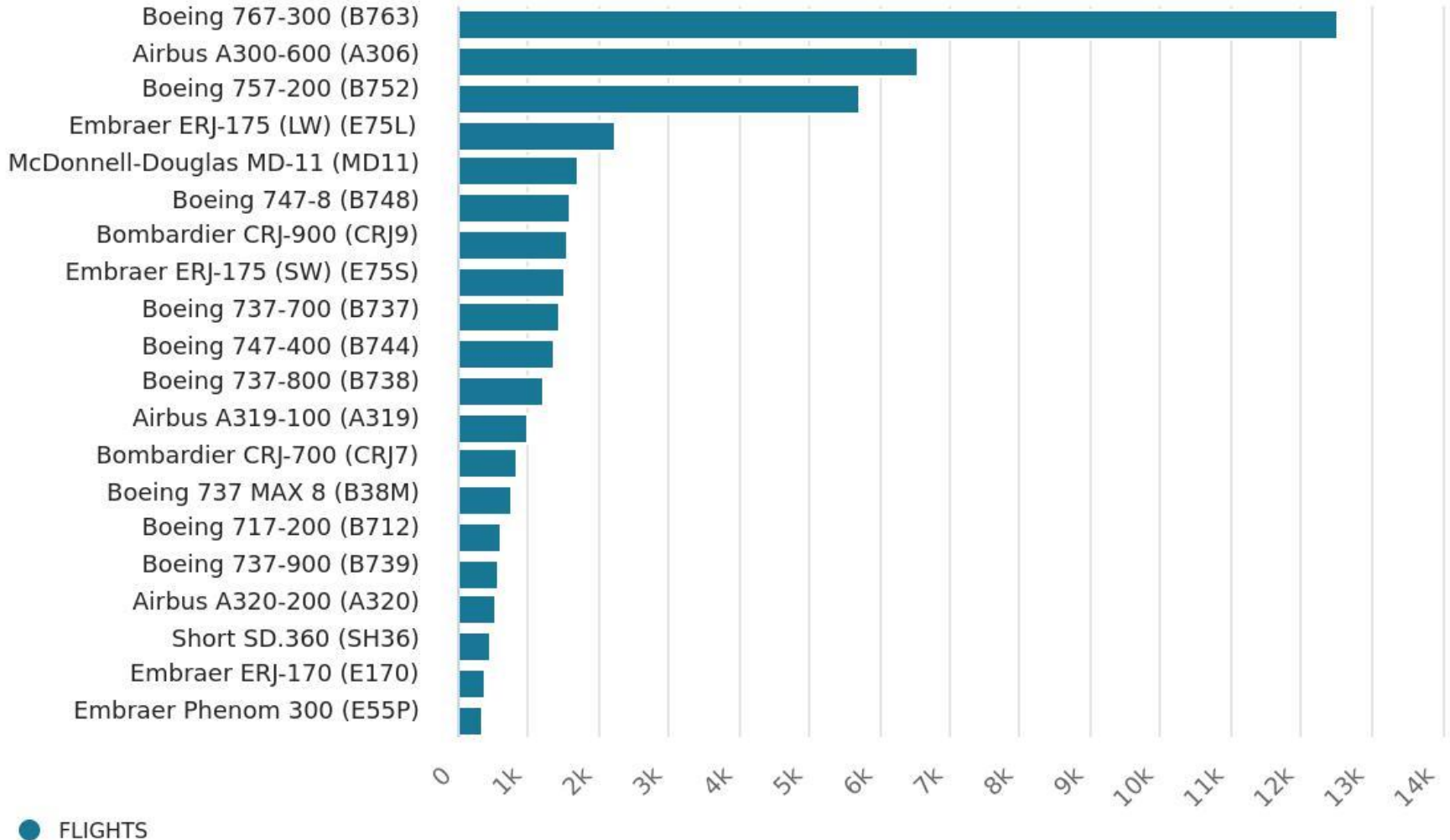
FLIGHTS PER DAY



Aircraft Types

October 1 – December 31, 2025 (SDF)

FLIGHTS PER AIRCRAFT TYPE



Airline Operations

October 1 – December 31, 2025 (SDF)

FLIGHTS PER AIRLINE

